



Full wwPDB EM Validation Report ⓘ

Mar 1, 2023 – 10:13 AM JST

PDB ID : 7FJM
EMDB ID : EMD-31623
Title : Cryo EM structure of lysosomal ATPase
Authors : Zhang, S.S.
Deposited on : 2021-08-04
Resolution : 3.30 Å (reported)

This is a Full wwPDB EM Validation Report for a publicly released PDB entry.

We welcome your comments at validation@mail.wwpdb.org

A user guide is available at

<https://www.wwpdb.org/validation/2017/EMValidationReportHelp>

with specific help available everywhere you see the ⓘ symbol.

The types of validation reports are described at

<http://www.wwpdb.org/validation/2017/FAQs#types>.

The following versions of software and data (see [references ⓘ](#)) were used in the production of this report:

EMDB validation analysis : 0.0.1.dev43
MolProbity : 4.02b-467
Percentile statistics : 20191225.v01 (using entries in the PDB archive December 25th 2019)
MapQ : 1.9.9
Ideal geometry (proteins) : Engh & Huber (2001)
Ideal geometry (DNA, RNA) : Parkinson et al. (1996)
Validation Pipeline (wwPDB-VP) : 2.32.1

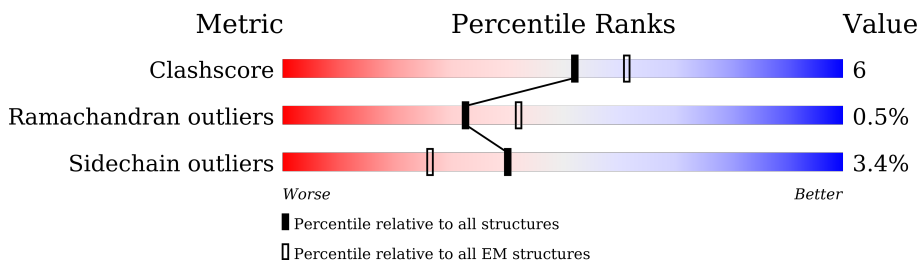
1 Overall quality at a glance i

The following experimental techniques were used to determine the structure:

ELECTRON MICROSCOPY

The reported resolution of this entry is 3.30 Å.

Percentile scores (ranging between 0-100) for global validation metrics of the entry are shown in the following graphic. The table shows the number of entries on which the scores are based.



Metric	Whole archive (#Entries)	EM structures (#Entries)
Clashscore	158937	4297
Ramachandran outliers	154571	4023
Sidechain outliers	154315	3826

The table below summarises the geometric issues observed across the polymeric chains and their fit to the map. The red, orange, yellow and green segments of the bar indicate the fraction of residues that contain outliers for ≥ 3 , 2, 1 and 0 types of geometric quality criteria respectively. A grey segment represents the fraction of residues that are not modelled. The numeric value for each fraction is indicated below the corresponding segment, with a dot representing fractions $\leq 5\%$. The upper red bar (where present) indicates the fraction of residues that have poor fit to the EM map (all-atom inclusion $< 40\%$). The numeric value is given above the bar.

Mol	Chain	Length	Quality of chain
1	A	1149	

2 Entry composition

There is only 1 type of molecule in this entry. The entry contains 7086 atoms, of which 0 are hydrogens and 0 are deuteriums.

In the tables below, the AltConf column contains the number of residues with at least one atom in alternate conformation and the Trace column contains the number of residues modelled with at most 2 atoms.

- Molecule 1 is a protein called Polyamine-transporting ATPase 13A2.

Mol	Chain	Residues	Atoms					AltConf	Trace
			Total	C	N	O	S		
1	A	973	7086	4566	1206	1270	44	0	0

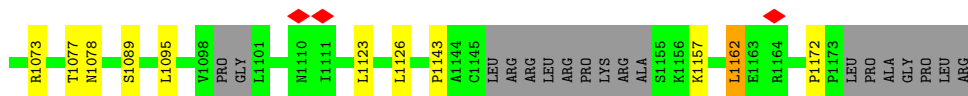
There are 31 discrepancies between the modelled and reference sequences:

Chain	Residue	Modelled	Actual	Comment	Reference
A	?	-	TRP	deletion	UNP Q9NQ11
A	?	-	VAL	deletion	UNP Q9NQ11
A	?	-	LEU	deletion	UNP Q9NQ11
A	?	-	GLU	deletion	UNP Q9NQ11
A	?	-	GLU	deletion	UNP Q9NQ11
A	?	-	GLU	deletion	UNP Q9NQ11
A	?	-	PRO	deletion	UNP Q9NQ11
A	?	-	ALA	deletion	UNP Q9NQ11
A	?	-	ALA	deletion	UNP Q9NQ11
A	?	-	ASP	deletion	UNP Q9NQ11
A	?	-	SER	deletion	UNP Q9NQ11
A	?	-	ALA	deletion	UNP Q9NQ11
A	?	-	PHE	deletion	UNP Q9NQ11
A	?	-	GLY	deletion	UNP Q9NQ11
A	?	-	THR	deletion	UNP Q9NQ11
A	?	-	GLN	deletion	UNP Q9NQ11
A	?	-	VAL	deletion	UNP Q9NQ11
A	?	-	LEU	deletion	UNP Q9NQ11
A	?	-	ALA	deletion	UNP Q9NQ11
A	?	-	VAL	deletion	UNP Q9NQ11
A	?	-	MET	deletion	UNP Q9NQ11
A	?	-	ARG	deletion	UNP Q9NQ11
A	?	-	PRO	deletion	UNP Q9NQ11
A	?	-	PRO	deletion	UNP Q9NQ11
A	?	-	LEU	deletion	UNP Q9NQ11
A	?	-	TRP	deletion	UNP Q9NQ11
A	?	-	GLU	deletion	UNP Q9NQ11
A	?	-	HIS	deletion	UNP Q9NQ11

Continued on next page...

Continued from previous page...

Chain	Residue	Modelled	Actual	Comment	Reference
A	?	-	PRO	deletion	UNP Q9NQ11
A	?	-	GLU	deletion	UNP Q9NQ11
A	?	-	ARG	deletion	UNP Q9NQ11



4 Experimental information

Property	Value	Source
EM reconstruction method	SINGLE PARTICLE	Depositor
Imposed symmetry	POINT, Not provided	
Number of particles used	153193	Depositor
Resolution determination method	FSC 0.143 CUT-OFF	Depositor
CTF correction method	PHASE FLIPPING AND AMPLITUDE CORRECTION	Depositor
Microscope	FEI TITAN KRIOS	Depositor
Voltage (kV)	300	Depositor
Electron dose ($e^-/\text{\AA}^2$)	50	Depositor
Minimum defocus (nm)	Not provided	
Maximum defocus (nm)	Not provided	
Magnification	Not provided	
Image detector	GATAN K2 SUMMIT (4k x 4k)	Depositor
Maximum map value	3.746	Depositor
Minimum map value	-1.925	Depositor
Average map value	0.008	Depositor
Map value standard deviation	0.084	Depositor
Recommended contour level	0.5	Depositor
Map size (Å)	263.496, 263.496, 263.496	wwPDB
Map dimensions	240, 240, 240	wwPDB
Map angles (°)	90.0, 90.0, 90.0	wwPDB
Pixel spacing (Å)	1.0979, 1.0979, 1.0979	Depositor

5 Model quality i

5.1 Standard geometry i

The Z score for a bond length (or angle) is the number of standard deviations the observed value is removed from the expected value. A bond length (or angle) with $|Z| > 5$ is considered an outlier worth inspection. RMSZ is the root-mean-square of all Z scores of the bond lengths (or angles).

Mol	Chain	Bond lengths		Bond angles	
		RMSZ	# Z >5	RMSZ	# Z >5
1	A	0.70	11/7225 (0.2%)	0.80	13/9876 (0.1%)

Chiral center outliers are detected by calculating the chiral volume of a chiral center and verifying if the center is modelled as a planar moiety or with the opposite hand. A planarity outlier is detected by checking planarity of atoms in a peptide group, atoms in a mainchain group or atoms of a sidechain that are expected to be planar.

Mol	Chain	#Chirality outliers	#Planarity outliers
1	A	0	6

All (11) bond length outliers are listed below:

Mol	Chain	Res	Type	Atoms	Z	Observed(Å)	Ideal(Å)
1	A	941	SER	CA-CB	-9.42	1.38	1.52
1	A	965	ALA	CA-C	-7.48	1.33	1.52
1	A	1054	SER	CA-CB	-7.15	1.42	1.52
1	A	947	SER	CA-CB	-7.12	1.42	1.52
1	A	961	LEU	C-O	-6.87	1.10	1.23
1	A	1052	SER	C-O	6.71	1.36	1.23
1	A	908	SER	CA-CB	-5.82	1.44	1.52
1	A	1052	SER	CA-CB	-5.66	1.44	1.52
1	A	1089	SER	CA-CB	-5.49	1.44	1.52
1	A	966	ILE	CA-C	-5.39	1.39	1.52
1	A	904	SER	CA-C	-5.02	1.39	1.52

All (13) bond angle outliers are listed below:

Mol	Chain	Res	Type	Atoms	Z	Observed(°)	Ideal(°)
1	A	904	SER	N-CA-C	-9.48	85.40	111.00
1	A	187	LEU	CA-CB-CG	8.17	134.08	115.30
1	A	61	PRO	N-CA-CB	6.95	111.64	103.30
1	A	1143	PRO	N-CA-CB	6.39	110.96	103.30
1	A	69	PRO	N-CA-CB	6.29	110.84	103.30

Continued on next page...

Continued from previous page...

Mol	Chain	Res	Type	Atoms	Z	Observed(°)	Ideal(°)
1	A	1095	LEU	CA-CB-CG	6.18	129.52	115.30
1	A	792	LEU	CA-CB-CG	5.83	128.72	115.30
1	A	300	PRO	N-CA-CB	5.65	110.08	103.30
1	A	121	PRO	N-CA-CB	5.60	110.02	103.30
1	A	1055	SER	N-CA-CB	-5.59	102.12	110.50
1	A	1011	LEU	CB-CG-CD1	-5.41	101.80	111.00
1	A	903	VAL	N-CA-C	-5.36	96.53	111.00
1	A	119	PRO	N-CA-CB	5.11	109.43	103.30

There are no chirality outliers.

All (6) planarity outliers are listed below:

Mol	Chain	Res	Type	Group
1	A	254	ASP	Peptide
1	A	965	ALA	Mainchain
1	A	966	ILE	Mainchain
1	A	967	ASP	Mainchain
1	A	968	LEU	Mainchain
1	A	969	VAL	Mainchain

5.2 Too-close contacts [i](#)

In the following table, the Non-H and H(model) columns list the number of non-hydrogen atoms and hydrogen atoms in the chain respectively. The H(added) column lists the number of hydrogen atoms added and optimized by MolProbity. The Clashes column lists the number of clashes within the asymmetric unit, whereas Symm-Clashes lists symmetry-related clashes.

Mol	Chain	Non-H	H(model)	H(added)	Clashes	Symm-Clashes
1	A	7086	0	7016	81	0
All	All	7086	0	7016	81	0

The all-atom clashscore is defined as the number of clashes found per 1000 atoms (including hydrogen atoms). The all-atom clashscore for this structure is 6.

All (81) close contacts within the same asymmetric unit are listed below, sorted by their clash magnitude.

Atom-1	Atom-2	Interatomic distance (Å)	Clash overlap (Å)
1:A:904:SER:HB3	1:A:905:PRO:HD3	1.65	0.76
1:A:903:VAL:HG11	1:A:907:THR:HG22	1.72	0.72

Continued on next page...

Continued from previous page...

Atom-1	Atom-2	Interatomic distance (Å)	Clash overlap (Å)
1:A:1023:THR:HG21	1:A:1049:VAL:HG11	1.76	0.67
1:A:437:LEU:HA	1:A:440:THR:HG22	1.77	0.66
1:A:439:GLY:HA3	1:A:945:PHE:HZ	1.63	0.64
1:A:904:SER:HB3	1:A:905:PRO:CD	2.29	0.63
1:A:1073:ARG:HE	1:A:1077:THR:HG21	1.65	0.62
1:A:905:PRO:HD2	1:A:906:PHE:CD1	2.38	0.59
1:A:424:HIS:HB3	1:A:427:LYS:HG2	1.85	0.59
1:A:897:GLN:HE21	1:A:907:THR:HB	1.68	0.58
1:A:340:VAL:HG12	1:A:380:ILE:HG22	1.84	0.58
1:A:551:LEU:HD12	1:A:719:LEU:HB3	1.86	0.58
1:A:904:SER:CB	1:A:905:PRO:HD3	2.34	0.58
1:A:946:ILE:HD12	1:A:1013:THR:HG23	1.85	0.57
1:A:970:ILE:O	1:A:974:VAL:HG22	2.05	0.56
1:A:967:ASP:O	1:A:968:LEU:C	2.39	0.56
1:A:565:GLN:NE2	1:A:567:THR:OG1	2.39	0.55
1:A:767:VAL:HG21	1:A:773:LEU:HD13	1.88	0.55
1:A:346:THR:HG23	1:A:348:GLU:H	1.72	0.55
1:A:509:LEU:HD23	1:A:745:ARG:HB3	1.89	0.54
1:A:903:VAL:HG22	1:A:904:SER:H	1.72	0.54
1:A:500:ARG:HA	1:A:503:LEU:HD23	1.91	0.52
1:A:402:THR:O	1:A:406:GLY:N	2.42	0.52
1:A:454:LEU:HA	1:A:457:ILE:HG12	1.90	0.52
1:A:464:LEU:HG	1:A:952:TYR:CE2	2.45	0.52
1:A:527:GLY:HA2	1:A:543:PRO:HG3	1.93	0.51
1:A:903:VAL:HG13	1:A:904:SER:O	2.11	0.50
1:A:843:LYS:HD3	1:A:1162:LEU:HD21	1.93	0.49
1:A:906:PHE:O	1:A:907:THR:C	2.48	0.49
1:A:1056:PHE:O	1:A:1060:ILE:HG12	2.12	0.49
1:A:740:ARG:NH1	1:A:766:MET:O	2.46	0.48
1:A:965:ALA:O	1:A:966:ILE:C	2.51	0.48
1:A:318:LEU:HD11	1:A:328:PRO:HG2	1.96	0.48
1:A:830:PHE:HE1	1:A:845:LEU:HD11	1.78	0.47
1:A:250:LEU:HD21	1:A:462:LEU:HB3	1.97	0.47
1:A:519:THR:HG22	1:A:728:LEU:HD23	1.96	0.47
1:A:966:ILE:O	1:A:967:ASP:C	2.50	0.46
1:A:908:SER:OG	1:A:909:SER:N	2.48	0.46
1:A:251:TRP:CH2	1:A:463:ASP:HB3	2.49	0.46
1:A:464:LEU:HG	1:A:952:TYR:HE2	1.81	0.46
1:A:823:LEU:HD13	1:A:847:GLN:HG3	1.98	0.46
1:A:903:VAL:HG22	1:A:904:SER:N	2.31	0.45
1:A:904:SER:CB	1:A:905:PRO:CD	2.94	0.45

Continued on next page...

Continued from previous page...

Atom-1	Atom-2	Interatomic distance (Å)	Clash overlap (Å)
1:A:968:LEU:O	1:A:969:VAL:C	2.53	0.45
1:A:1123:LEU:HA	1:A:1126:LEU:HG	2.00	0.44
1:A:427:LYS:HA	1:A:427:LYS:HD3	1.78	0.44
1:A:965:ALA:O	1:A:966:ILE:O	2.35	0.44
1:A:675:GLN:NE2	1:A:679:SER:OG	2.50	0.44
1:A:530:PRO:HB2	1:A:537:LEU:HD21	1.99	0.44
1:A:205:SER:O	1:A:209:GLN:N	2.51	0.43
1:A:537:LEU:HA	1:A:538:PRO:HD3	1.87	0.43
1:A:452:VAL:HG21	1:A:457:ILE:HG23	2.01	0.43
1:A:70:LEU:O	1:A:71:TRP:C	2.57	0.43
1:A:354:LYS:NZ	1:A:370:ARG:O	2.49	0.43
1:A:966:ILE:O	1:A:967:ASP:O	2.37	0.43
1:A:464:LEU:HD11	1:A:949:LEU:HD13	2.01	0.43
1:A:470:PRO:HA	1:A:471:PRO:HD3	1.87	0.42
1:A:947:SER:HA	1:A:950:ILE:HG22	2.00	0.42
1:A:957:ASN:HD22	1:A:958:LEU:H	1.66	0.42
1:A:298:CYS:N	1:A:317:CYS:SG	2.89	0.42
1:A:464:LEU:HD23	1:A:464:LEU:HA	1.87	0.42
1:A:774:ILE:HG22	1:A:793:PRO:HA	2.00	0.42
1:A:330:ASP:OD1	1:A:330:ASP:N	2.52	0.42
1:A:1012:VAL:HG13	1:A:1057:GLN:OE1	2.19	0.42
1:A:847:GLN:HE22	1:A:1172:PRO:HD3	1.85	0.42
1:A:168:PHE:HE1	1:A:171:GLN:HB2	1.84	0.41
1:A:778:ALA:H	1:A:829:THR:HG23	1.85	0.41
1:A:163:LEU:HD11	1:A:214:ALA:HB1	2.02	0.41
1:A:357:LEU:HD22	1:A:358:PRO:HD2	2.03	0.41
1:A:788:SER:OG	1:A:789:LEU:N	2.52	0.41
1:A:952:TYR:HD1	1:A:952:TYR:HA	1.77	0.41
1:A:187:LEU:HB2	1:A:190:HIS:HB2	2.02	0.41
1:A:175:TRP:HA	1:A:181:ALA:HB1	2.03	0.40
1:A:428:PHE:HB2	1:A:997:LEU:HD11	2.02	0.40
1:A:422:TYR:OH	1:A:428:PHE:HB3	2.22	0.40
1:A:529:VAL:HB	1:A:721:LEU:HB2	2.03	0.40
1:A:820:SER:OG	1:A:821:ARG:N	2.52	0.40
1:A:442:TYR:HD2	1:A:949:LEU:HD11	1.87	0.40
1:A:544:ARG:HG2	1:A:581:THR:HA	2.02	0.40
1:A:562:SER:HB2	1:A:564:LEU:HD23	2.03	0.40
1:A:967:ASP:O	1:A:968:LEU:O	2.40	0.40

There are no symmetry-related clashes.

5.3 Torsion angles [i](#)

5.3.1 Protein backbone [i](#)

In the following table, the Percentiles column shows the percent Ramachandran outliers of the chain as a percentile score with respect to all PDB entries followed by that with respect to all EM entries.

The Analysed column shows the number of residues for which the backbone conformation was analysed, and the total number of residues.

Mol	Chain	Analysed	Favoured	Allowed	Outliers	Percentiles
1	A	955/1149 (83%)	862 (90%)	88 (9%)	5 (0%)	29 61

All (5) Ramachandran outliers are listed below:

Mol	Chain	Res	Type
1	A	61	PRO
1	A	905	PRO
1	A	904	SER
1	A	954	ILE
1	A	903	VAL

5.3.2 Protein sidechains [i](#)

In the following table, the Percentiles column shows the percent sidechain outliers of the chain as a percentile score with respect to all PDB entries followed by that with respect to all EM entries.

The Analysed column shows the number of residues for which the sidechain conformation was analysed, and the total number of residues.

Mol	Chain	Analysed	Rotameric	Outliers	Percentiles
1	A	727/976 (74%)	702 (97%)	25 (3%)	37 65

All (25) residues with a non-rotameric sidechain are listed below:

Mol	Chain	Res	Type
1	A	192	ARG
1	A	219	ASN
1	A	257	TYR
1	A	429	VAL
1	A	437	LEU
1	A	457	ILE

Continued on next page...

Continued from previous page...

Mol	Chain	Res	Type
1	A	458	VAL
1	A	460	ARG
1	A	466	THR
1	A	745	ARG
1	A	907	THR
1	A	939	LEU
1	A	940	TYR
1	A	946	ILE
1	A	957	ASN
1	A	961	LEU
1	A	968	LEU
1	A	1008	GLN
1	A	1011	LEU
1	A	1013	THR
1	A	1055	SER
1	A	1057	GLN
1	A	1078	ASN
1	A	1157	LYS
1	A	1162	LEU

Sometimes sidechains can be flipped to improve hydrogen bonding and reduce clashes. All (7) such sidechains are listed below:

Mol	Chain	Res	Type
1	A	565	GLN
1	A	675	GLN
1	A	847	GLN
1	A	897	GLN
1	A	957	ASN
1	A	1078	ASN
1	A	1127	ASN

5.3.3 RNA [i](#)

There are no RNA molecules in this entry.

5.4 Non-standard residues in protein, DNA, RNA chains [i](#)

There are no non-standard protein/DNA/RNA residues in this entry.

5.5 Carbohydrates [i](#)

There are no monosaccharides in this entry.

5.6 Ligand geometry [i](#)

There are no ligands in this entry.

5.7 Other polymers [i](#)

There are no such residues in this entry.

5.8 Polymer linkage issues [i](#)

There are no chain breaks in this entry.

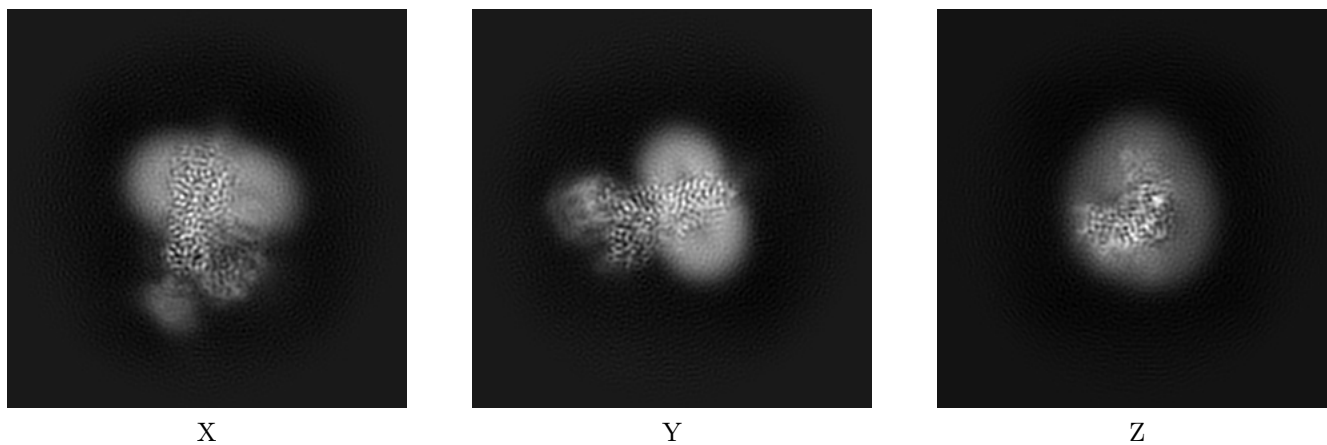
6 Map visualisation [i](#)

This section contains visualisations of the EMDB entry EMD-31623. These allow visual inspection of the internal detail of the map and identification of artifacts.

No raw map or half-maps were deposited for this entry and therefore no images, graphs, etc. pertaining to the raw map can be shown.

6.1 Orthogonal projections [i](#)

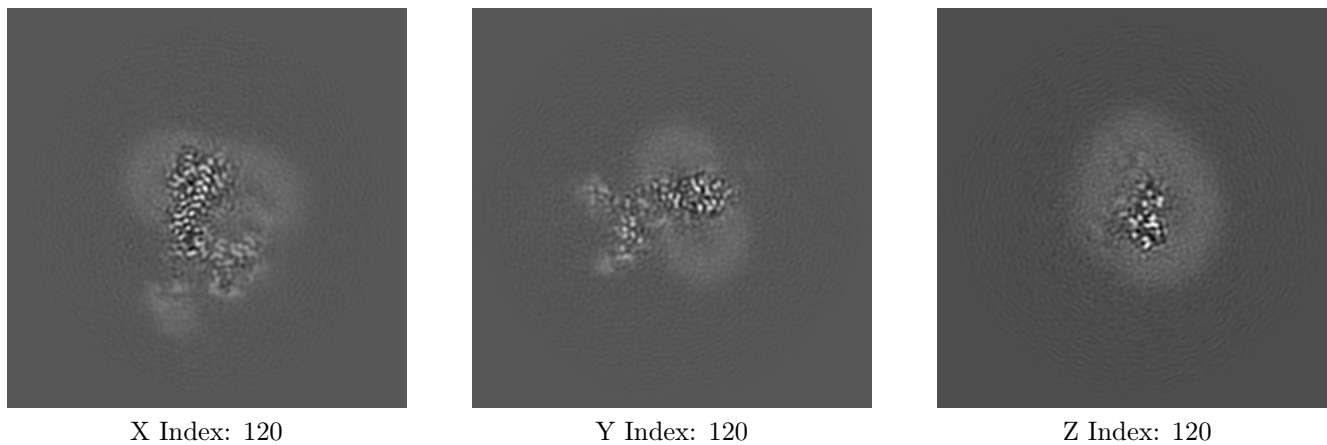
6.1.1 Primary map



The images above show the map projected in three orthogonal directions.

6.2 Central slices [i](#)

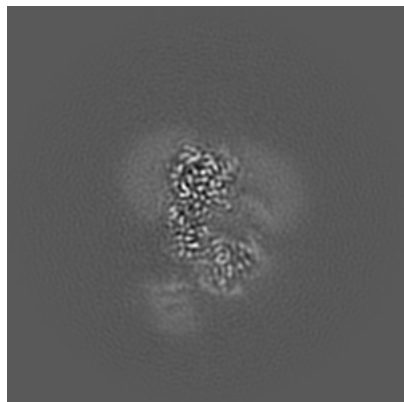
6.2.1 Primary map



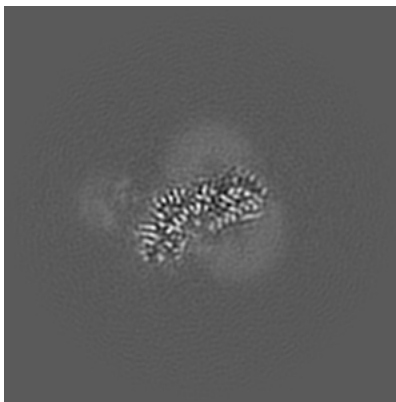
The images above show central slices of the map in three orthogonal directions.

6.3 Largest variance slices [i](#)

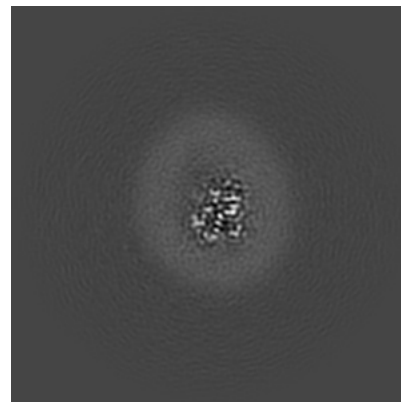
6.3.1 Primary map



X Index: 122



Y Index: 110



Z Index: 133

The images above show the largest variance slices of the map in three orthogonal directions.

6.4 Orthogonal surface views [i](#)

6.4.1 Primary map



X



Y



Z

The images above show the 3D surface view of the map at the recommended contour level 0.5. These images, in conjunction with the slice images, may facilitate assessment of whether an appropriate contour level has been provided.

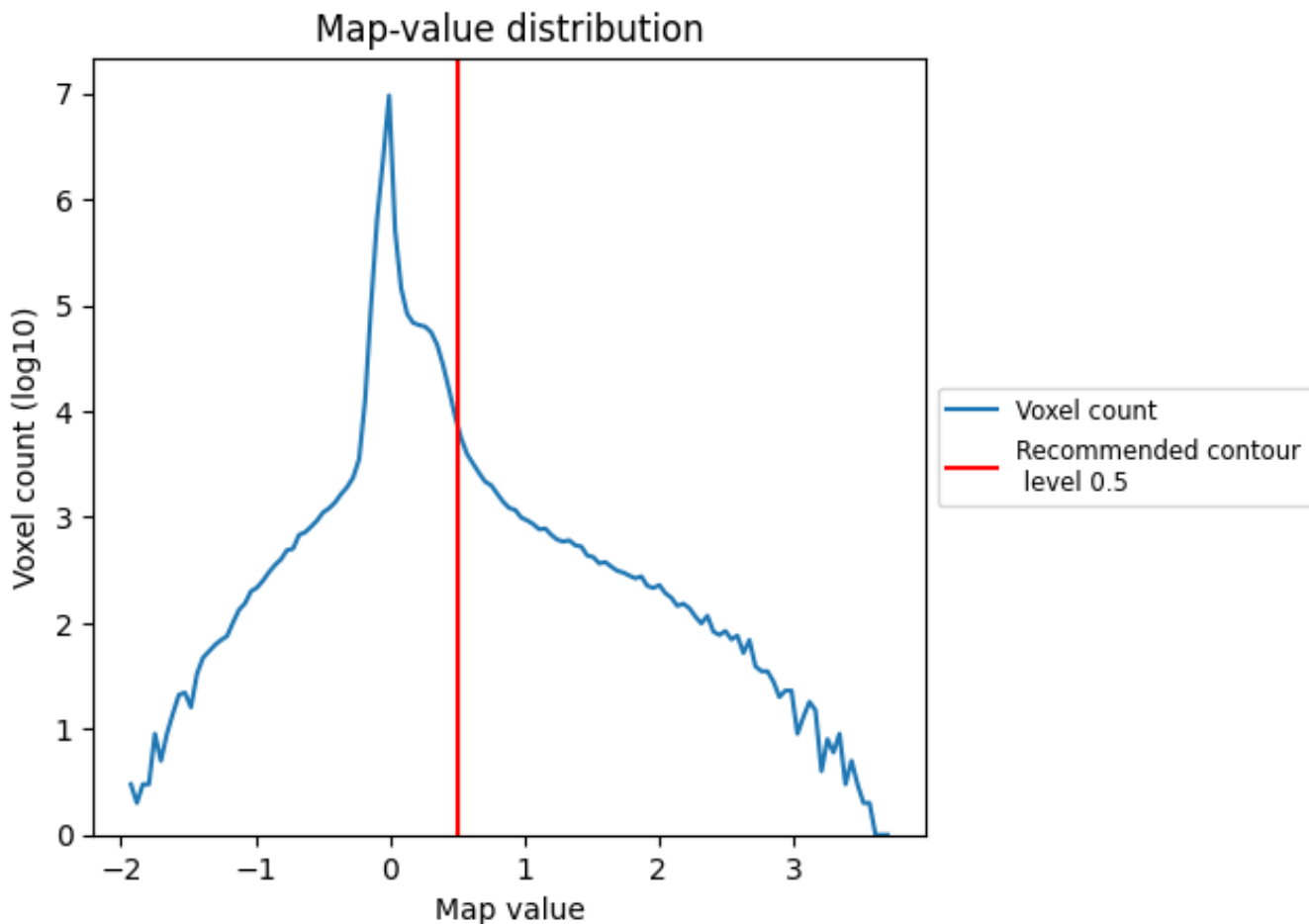
6.5 Mask visualisation

This section was not generated. No masks/segmentation were deposited.

7 Map analysis [i](#)

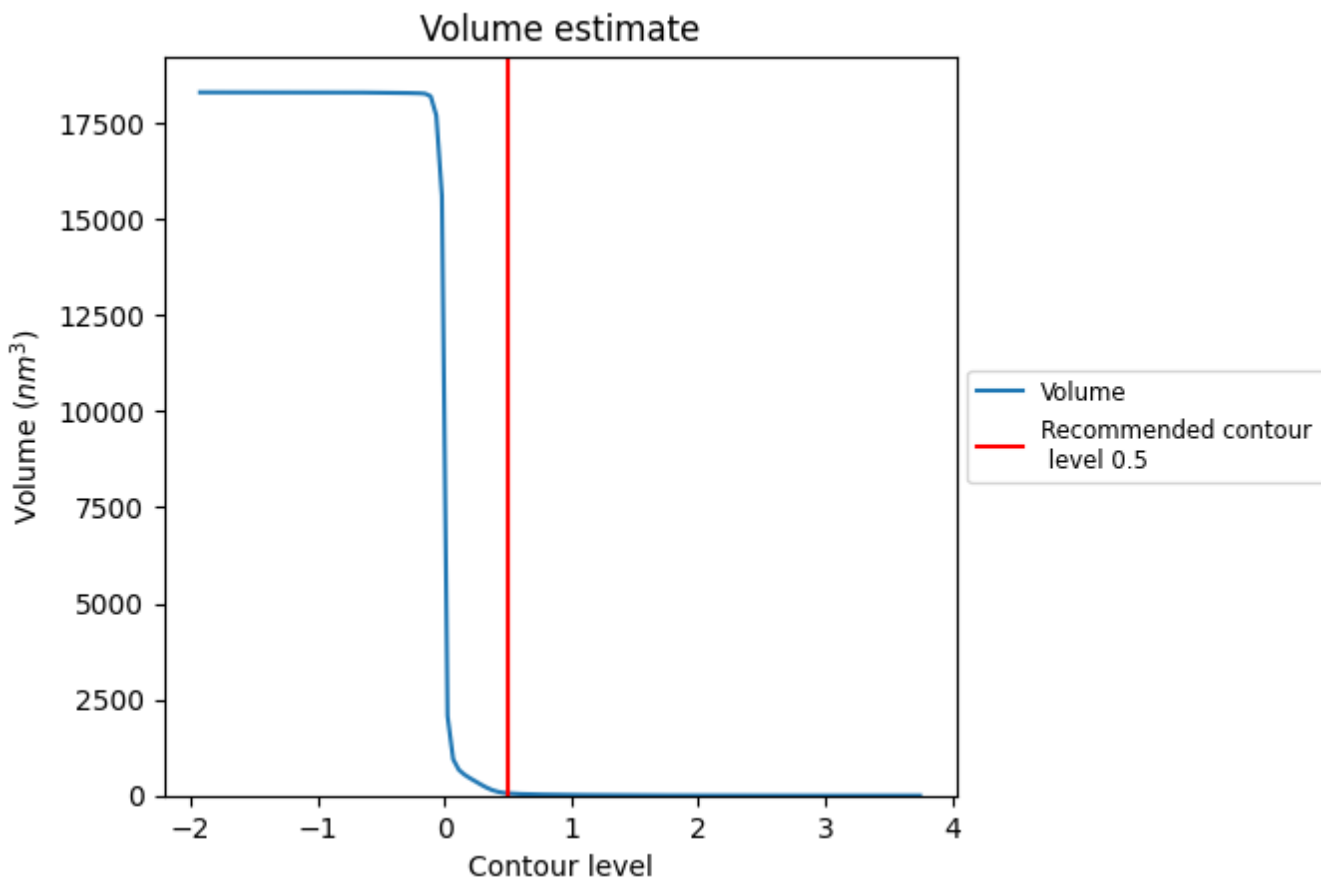
This section contains the results of statistical analysis of the map.

7.1 Map-value distribution [i](#)



The map-value distribution is plotted in 128 intervals along the x-axis. The y-axis is logarithmic. A spike in this graph at zero usually indicates that the volume has been masked.

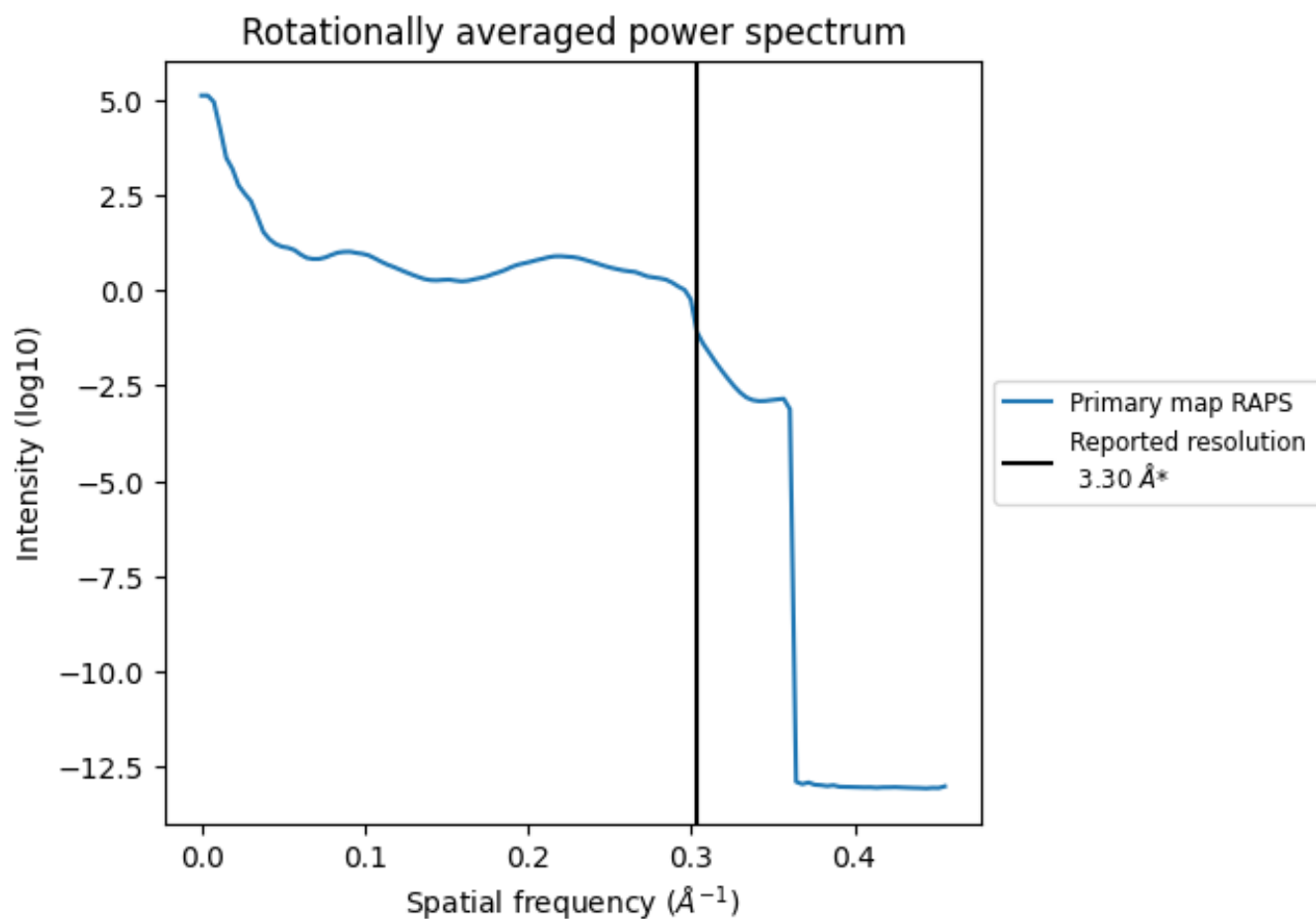
7.2 Volume estimate [i](#)



The volume at the recommended contour level is 59 nm^3 ; this corresponds to an approximate mass of 54 kDa.

The volume estimate graph shows how the enclosed volume varies with the contour level. The recommended contour level is shown as a vertical line and the intersection between the line and the curve gives the volume of the enclosed surface at the given level.

7.3 Rotationally averaged power spectrum [i](#)



*Reported resolution corresponds to spatial frequency of 0.303 Å⁻¹

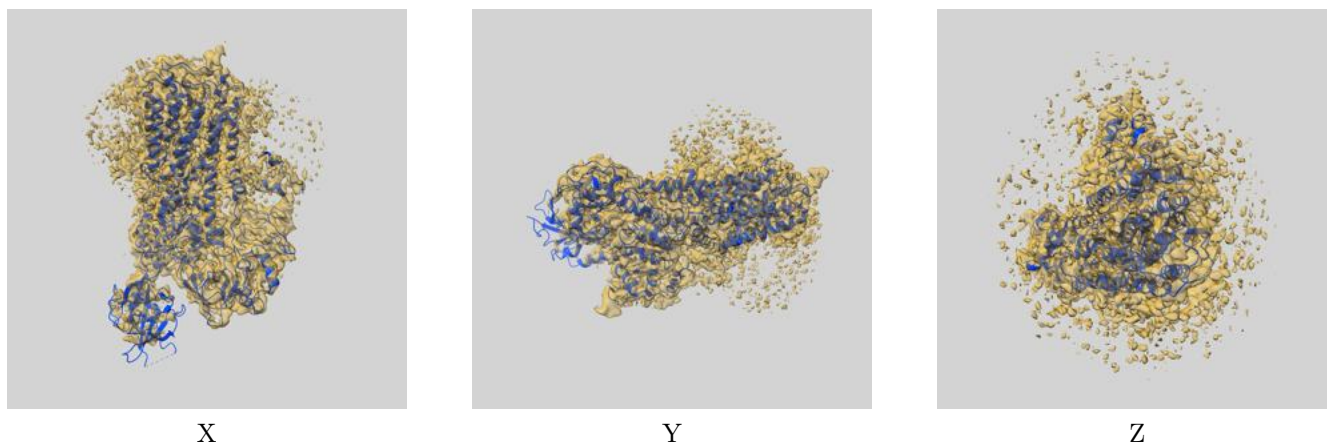
8 Fourier-Shell correlation

This section was not generated. No FSC curve or half-maps provided.

9 Map-model fit [i](#)

This section contains information regarding the fit between EMDB map EMD-31623 and PDB model 7FJM. Per-residue inclusion information can be found in section 3 on page 5.

9.1 Map-model overlay [i](#)



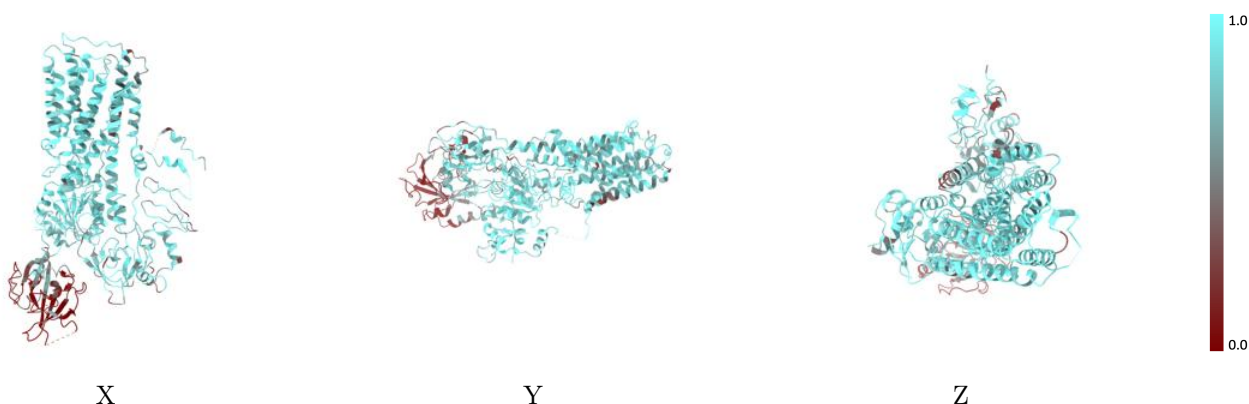
The images above show the 3D surface view of the map at the recommended contour level 0.5 at 50% transparency in yellow overlaid with a ribbon representation of the model coloured in blue. These images allow for the visual assessment of the quality of fit between the atomic model and the map.

9.2 Q-score mapped to coordinate model [\(i\)](#)



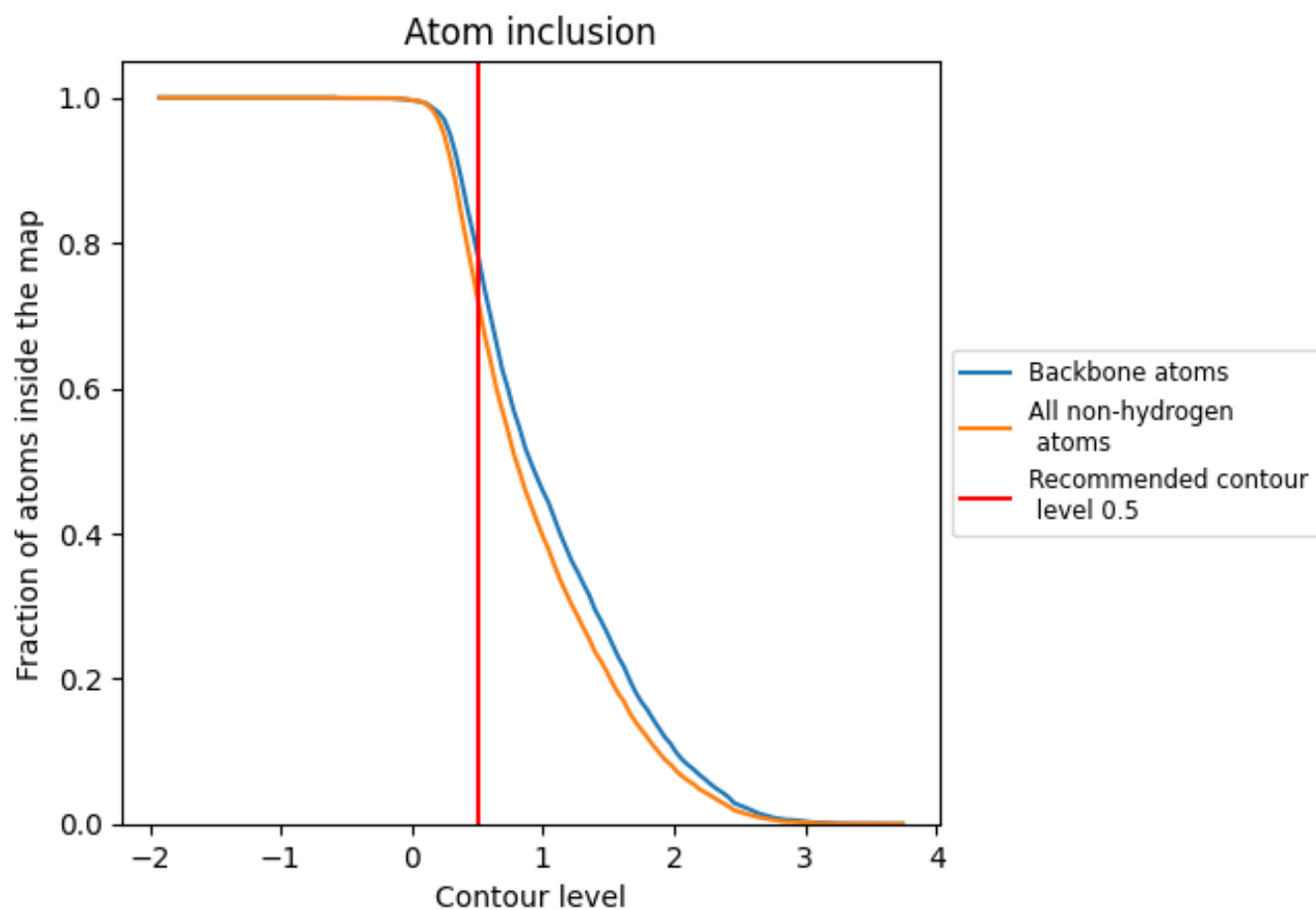
The images above show the model with each residue coloured according to its Q-score. This shows their resolvability in the map with higher Q-score values reflecting better resolvability. Please note: Q-score is calculating the resolvability of atoms, and thus high values are only expected at resolutions at which atoms can be resolved. Low Q-score values may therefore be expected for many entries.

9.3 Atom inclusion mapped to coordinate model [\(i\)](#)



The images above show the model with each residue coloured according to its atom inclusion. This shows to what extent they are inside the map at the recommended contour level (0.5).





9.4 Atom inclusion [i](#)



At the recommended contour level, 79% of all backbone atoms, 73% of all non-hydrogen atoms, are inside the map.

9.5 Map-model fit summary [i](#)

The table lists the average atom inclusion at the recommended contour level (0.5) and Q-score for the entire model and for each chain.

Chain	Atom inclusion	Q-score
All	 0.7263	 0.4400
A	 0.7263	 0.4400

