



Full wwPDB X-ray Structure Validation Report ⓘ

Feb 6, 2024 – 09:12 PM EST

PDB ID : 2FL6
Title : crystal structure of KSP in complex with inhibitor 6
Authors : Yan, Y.
Deposited on : 2006-01-05
Resolution : 2.50 Å(reported)

This is a Full wwPDB X-ray Structure Validation Report for a publicly released PDB entry.

We welcome your comments at validation@mail.wwpdb.org

A user guide is available at

<https://www.wwpdb.org/validation/2017/XrayValidationReportHelp>

with specific help available everywhere you see the ⓘ symbol.

The types of validation reports are described at

<http://www.wwpdb.org/validation/2017/FAQs#types>.

The following versions of software and data (see [references ⓘ](#)) were used in the production of this report:

MolProbity : 4.02b-467
Mogul : 1.8.5 (274361), CSD as541be (2020)
Xtrriage (Phenix) : **NOT EXECUTED**
EDS : **NOT EXECUTED**
buster-report : 1.1.7 (2018)
Percentile statistics : 20191225.v01 (using entries in the PDB archive December 25th 2019)
Ideal geometry (proteins) : Engh & Huber (2001)
Ideal geometry (DNA, RNA) : Parkinson et al. (1996)
Validation Pipeline (wwPDB-VP) : 2.36

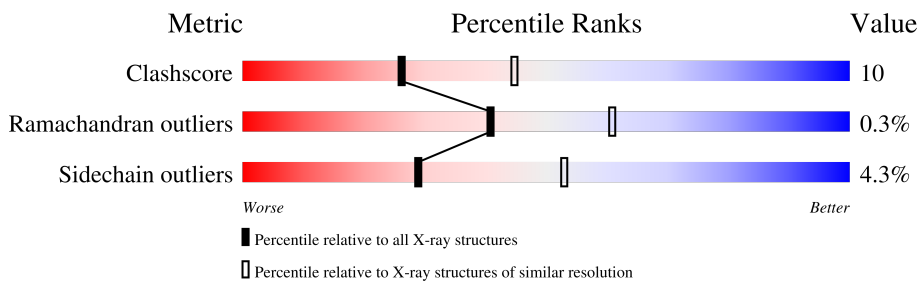
1 Overall quality at a glance

The following experimental techniques were used to determine the structure:

X-RAY DIFFRACTION

The reported resolution of this entry is 2.50 Å.

Percentile scores (ranging between 0-100) for global validation metrics of the entry are shown in the following graphic. The table shows the number of entries on which the scores are based.



Metric	Whole archive (#Entries)	Similar resolution (#Entries, resolution range(Å))
Clashscore	141614	5346 (2.50-2.50)
Ramachandran outliers	138981	5231 (2.50-2.50)
Sidechain outliers	138945	5233 (2.50-2.50)

The table below summarises the geometric issues observed across the polymeric chains and their fit to the electron density. The red, orange, yellow and green segments of the lower bar indicate the fraction of residues that contain outliers for ≥ 3 , 2, 1 and 0 types of geometric quality criteria respectively. A grey segment represents the fraction of residues that are not modelled. The numeric value for each fraction is indicated below the corresponding segment, with a dot representing fractions $\leq 5\%$.

Note EDS was not executed.

Mol	Chain	Length	Quality of chain
1	A	367	
1	B	367	

2 Entry composition [i](#)

There are 5 unique types of molecules in this entry. The entry contains 5472 atoms, of which 0 are hydrogens and 0 are deuteriums.

In the tables below, the ZeroOcc column contains the number of atoms modelled with zero occupancy, the AltConf column contains the number of residues with at least one atom in alternate conformation and the Trace column contains the number of residues modelled with at most 2 atoms.

- Molecule 1 is a protein called Kinesin-like protein KIF11.

Mol	Chain	Residues	Atoms					ZeroOcc	AltConf	Trace
			Total	C	N	O	S			
1	A	330	Total 2594	C 1624	N 452	O 508	S 10	0	0	0
1	B	330	Total 2594	C 1624	N 452	O 508	S 10	0	0	0

- Molecule 2 is MAGNESIUM ION (three-letter code: MG) (formula: Mg).

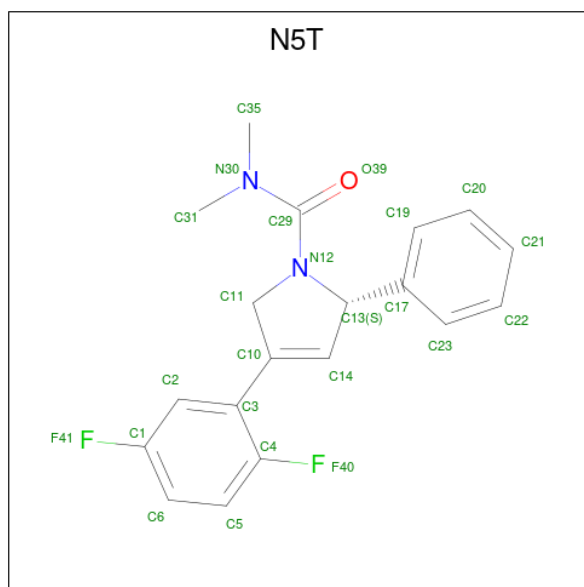
Mol	Chain	Residues	Atoms		ZeroOcc	AltConf
2	A	1	Total 1	Mg 1	0	0
2	B	1	Total 1	Mg 1	0	0

- Molecule 3 is ADENOSINE-5'-DIPHOSPHATE (three-letter code: ADP) (formula: $C_{10}H_{15}N_5O_{10}P_2$).



Mol	Chain	Residues	Atoms					ZeroOcc	AltConf
			Total	C	N	O	P		
3	A	1	27	10	5	10	2	0	0
3	B	1	27	10	5	10	2	0	0

- Molecule 4 is (2S)-4-(2,5-DIFLUOROPHENYL)-N,N-DIMETHYL-2-PHENYL-2,5-DIHYDRO-1H-PYRROLE-1-CARBOXAMIDE (three-letter code: N5T) (formula: C₁₉H₁₈F₂N₂O).



Mol	Chain	Residues	Atoms					ZeroOcc	AltConf
			Total	C	F	N	O		
4	A	1	24	19	2	2	1	0	0
4	B	1	24	19	2	2	1	0	0

- Molecule 5 is water.

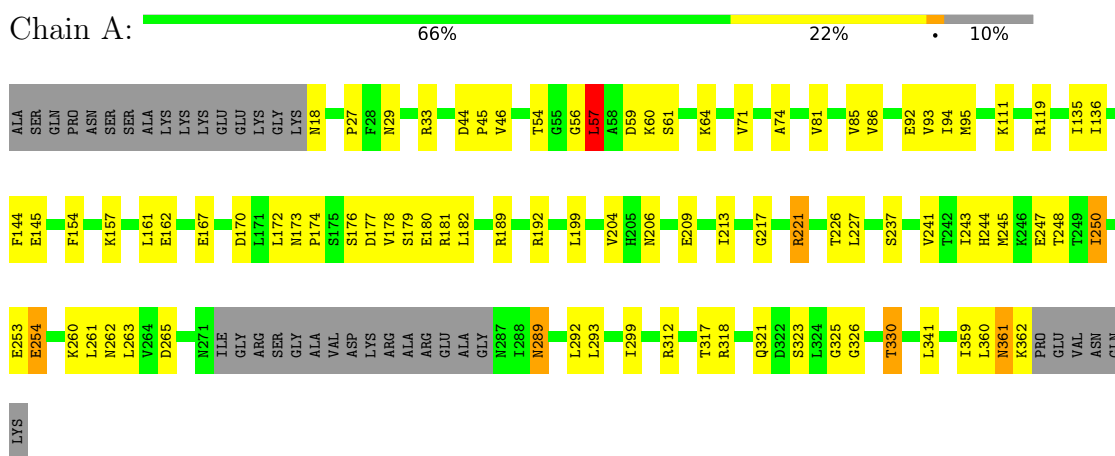
Mol	Chain	Residues	Atoms		ZeroOcc	AltConf
			Total	O		
5	A	92	92	92	0	0
5	B	88	88	88	0	0

3 Residue-property plots

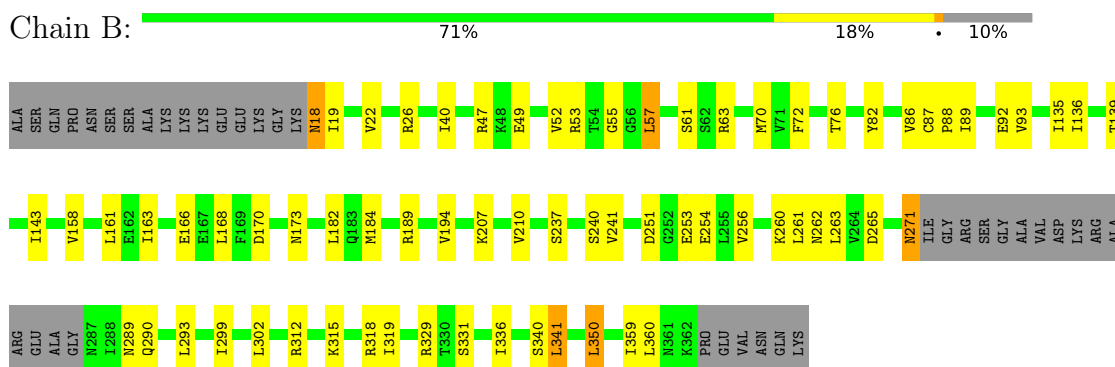
These plots are drawn for all protein, RNA, DNA and oligosaccharide chains in the entry. The first graphic for a chain summarises the proportions of the various outlier classes displayed in the second graphic. The second graphic shows the sequence view annotated by issues in geometry. Residues are color-coded according to the number of geometric quality criteria for which they contain at least one outlier: green = 0, yellow = 1, orange = 2 and red = 3 or more. Stretches of 2 or more consecutive residues without any outlier are shown as a green connector. Residues present in the sample, but not in the model, are shown in grey.

Note EDS was not executed.

- Molecule 1: Kinesin-like protein KIF11



- Molecule 1: Kinesin-like protein KIF11



4 Data and refinement statistics

Xtrriage (Phenix) and EDS were not executed - this section is therefore incomplete.

Property	Value	Source
Space group	P 21 21 21	Depositor
Cell constants a, b, c, α , β , γ	68.90Å 79.40Å 158.80Å 90.00° 90.00° 90.00°	Depositor
Resolution (Å)	50.00 – 2.50	Depositor
% Data completeness (in resolution range)	85.0 (50.00-2.50)	Depositor
R_{merge}	0.09	Depositor
R_{sym}	0.09	Depositor
Refinement program	CNS	Depositor
R, R_{free}	0.223 , 0.273	Depositor
Estimated twinning fraction	No twinning to report.	Xtrriage
Total number of atoms	5472	wwPDB-VP
Average B, all atoms (Å ²)	35.0	wwPDB-VP

5 Model quality

5.1 Standard geometry

Bond lengths and bond angles in the following residue types are not validated in this section: ADP, N5T, MG

The Z score for a bond length (or angle) is the number of standard deviations the observed value is removed from the expected value. A bond length (or angle) with $|Z| > 5$ is considered an outlier worth inspection. RMSZ is the root-mean-square of all Z scores of the bond lengths (or angles).

Mol	Chain	Bond lengths		Bond angles	
		RMSZ	# Z >5	RMSZ	# Z >5
1	A	0.40	0/2632	0.65	0/3559
1	B	0.41	0/2632	0.64	0/3559
All	All	0.40	0/5264	0.65	0/7118

There are no bond length outliers.

There are no bond angle outliers.

There are no chirality outliers.

There are no planarity outliers.

5.2 Too-close contacts

In the following table, the Non-H and H(model) columns list the number of non-hydrogen atoms and hydrogen atoms in the chain respectively. The H(added) column lists the number of hydrogen atoms added and optimized by MolProbity. The Clashes column lists the number of clashes within the asymmetric unit, whereas Symm-Clashes lists symmetry-related clashes.

Mol	Chain	Non-H	H(model)	H(added)	Clashes	Symm-Clashes
1	A	2594	0	2618	58	0
1	B	2594	0	2618	52	0
2	A	1	0	0	0	0
2	B	1	0	0	0	0
3	A	27	0	12	0	0
3	B	27	0	12	0	0
4	A	24	0	17	1	0
4	B	24	0	17	0	0
5	A	92	0	0	3	0
5	B	88	0	0	4	0
All	All	5472	0	5294	110	0

The all-atom clashscore is defined as the number of clashes found per 1000 atoms (including hydrogen atoms). The all-atom clashscore for this structure is 10.

All (110) close contacts within the same asymmetric unit are listed below, sorted by their clash magnitude.

Atom-1	Atom-2	Interatomic distance (Å)	Clash overlap (Å)
1:B:40:ILE:HD13	1:B:340:SER:HA	1.48	0.94
1:A:299:ILE:HG23	1:A:359:ILE:HD11	1.57	0.87
1:B:18:ASN:HB2	1:B:360:LEU:HD12	1.60	0.82
1:A:56:GLY:O	1:A:57:LEU:HB2	1.79	0.80
1:B:341:LEU:O	1:B:341:LEU:HG	1.86	0.76
1:A:326:GLY:O	1:A:361:ASN:HB2	1.86	0.75
1:A:54:THR:HG21	1:A:64:LYS:HD3	1.70	0.73
1:A:323:SER:O	1:A:330:THR:HG21	1.92	0.70
1:A:18:ASN:HB2	1:A:360:LEU:HD12	1.77	0.66
1:B:92:GLU:OE2	1:B:329:ARG:HD2	1.97	0.64
1:A:176:SER:HB2	1:A:180:GLU:OE1	1.98	0.64
1:A:204:VAL:HG22	1:A:213:ILE:CD1	2.28	0.63
1:A:237:SER:OG	1:A:265:ASP:HB3	1.97	0.63
1:A:260:LYS:HE2	1:A:262:ASN:HD21	1.64	0.61
1:B:184:MET:HE3	1:B:318:ARG:HH21	1.66	0.61
1:A:170:ASP:HB2	1:A:182:LEU:HD11	1.82	0.61
1:A:361:ASN:O	1:A:362:LYS:HB2	2.01	0.61
1:B:22:VAL:HG12	1:B:70:MET:HB2	1.83	0.61
1:A:92:GLU:HG2	1:A:95:MET:HE3	1.83	0.59
1:A:57:LEU:HB3	1:A:60:LYS:O	2.02	0.59
1:B:57:LEU:HD12	1:B:57:LEU:H	1.66	0.58
1:A:29:ASN:O	1:A:33:ARG:HG2	2.05	0.57
1:A:57:LEU:CB	1:A:60:LYS:O	2.54	0.55
1:A:204:VAL:HG22	1:A:213:ILE:HD12	1.88	0.55
1:A:178:VAL:HG23	1:A:227:LEU:HD23	1.89	0.55
1:B:40:ILE:CD1	1:B:340:SER:HA	2.29	0.55
1:A:289:ASN:HD22	1:A:292:LEU:H	1.55	0.54
1:B:22:VAL:CG1	1:B:70:MET:HB2	2.38	0.54
1:B:312:ARG:HA	1:B:318:ARG:HG3	1.89	0.54
1:B:87:CYS:HB3	1:B:88:PRO:HD3	1.89	0.54
1:A:325:GLY:HA2	1:A:361:ASN:HB3	1.90	0.54
1:A:248:THR:HA	1:A:253:GLU:O	2.08	0.53
1:B:19:ILE:HD12	1:B:359:ILE:HB	1.90	0.53
1:B:189:ARG:HD3	5:B:621:HOH:O	2.07	0.53
1:A:45:PRO:HA	1:A:71:VAL:HG23	1.89	0.53
1:A:136:ILE:HG12	1:A:263:LEU:HD12	1.89	0.53
1:A:93:VAL:HG21	1:A:261:LEU:HB2	1.91	0.53

Continued on next page...

Continued from previous page...

Atom-1	Atom-2	Interatomic distance (Å)	Clash overlap (Å)
1:A:227:LEU:HD12	1:A:227:LEU:O	2.09	0.53
1:B:55:GLY:O	1:B:61:SER:HB2	2.07	0.53
1:B:161:LEU:HD21	1:B:319:ILE:HD13	1.91	0.53
1:A:44:ASP:OD1	1:A:46:VAL:HG12	2.08	0.52
1:B:299:ILE:HG23	1:B:359:ILE:HD11	1.90	0.52
1:B:63:ARG:HD2	5:B:611:HOH:O	2.10	0.52
1:B:166:GLU:OE1	1:B:315:LYS:HG2	2.10	0.52
1:B:76:THR:HA	5:B:630:HOH:O	2.10	0.51
1:A:57:LEU:O	1:A:61:SER:HB3	2.10	0.51
1:A:119:ARG:HG2	4:A:604:N5T:C35	2.41	0.51
1:B:237:SER:OG	1:B:265:ASP:HB3	2.11	0.51
1:B:241:VAL:HG13	1:B:261:LEU:HB3	1.93	0.51
1:B:72:PHE:HD1	1:B:76:THR:HG21	1.77	0.50
1:B:136:ILE:HG12	1:B:263:LEU:HD13	1.93	0.50
1:A:247:GLU:O	1:A:254:GLU:HA	2.12	0.49
1:A:217:GLY:O	1:A:221:ARG:HB2	2.12	0.49
1:B:139:THR:O	1:B:143:ILE:HG13	2.13	0.49
1:B:318:ARG:HH11	1:B:318:ARG:HG2	1.78	0.48
1:A:81:VAL:O	1:A:85:VAL:HG22	2.13	0.48
1:A:92:GLU:HA	1:A:95:MET:CE	2.43	0.48
1:A:192:ARG:HB2	1:A:321:GLN:OE1	2.14	0.48
1:A:312:ARG:HA	1:A:318:ARG:CG	2.44	0.48
1:A:144:PHE:CE1	1:A:206:ASN:HA	2.48	0.48
1:A:172:LEU:O	1:A:174:PRO:HD3	2.13	0.48
1:B:57:LEU:O	1:B:61:SER:HB3	2.14	0.48
1:B:207:LYS:O	1:B:210:VAL:HG13	2.14	0.48
1:A:18:ASN:HB2	1:A:360:LEU:CD1	2.43	0.47
1:A:167:GLU:HG2	1:A:181:ARG:HE	1.78	0.47
1:A:209:GLU:O	1:A:213:ILE:HG13	2.13	0.47
1:A:241:VAL:O	1:A:241:VAL:HG13	2.14	0.47
1:A:341:LEU:HD12	1:A:341:LEU:H	1.80	0.47
1:B:271:ASN:C	1:B:271:ASN:HD22	2.19	0.47
1:B:251:ASP:HB2	5:B:644:HOH:O	2.15	0.47
1:B:260:LYS:HE2	1:B:262:ASN:HD21	1.81	0.46
1:A:18:ASN:CB	1:A:360:LEU:HD12	2.43	0.45
1:A:111:LYS:HE2	5:A:606:HOH:O	2.17	0.45
1:A:177:ASP:OD1	1:A:179:SER:HB2	2.16	0.45
1:A:250:ILE:H	1:A:250:ILE:HD13	1.80	0.45
1:B:82:TYR:CD2	1:B:86:VAL:HB	2.52	0.45
1:B:184:MET:HE1	1:B:318:ARG:HE	1.82	0.45
1:B:336:ILE:HG21	1:B:350:LEU:CD1	2.47	0.45

Continued on next page...

Continued from previous page...

Atom-1	Atom-2	Interatomic distance (Å)	Clash overlap (Å)
1:B:52:VAL:O	1:B:63:ARG:HA	2.17	0.44
1:A:243:ILE:HG22	1:A:245:MET:HG3	1.99	0.44
1:B:53:ARG:HB2	1:B:63:ARG:NH1	2.33	0.44
1:B:170:ASP:HB2	1:B:182:LEU:HD11	1.99	0.44
1:A:162:GLU:HG2	1:A:237:SER:HA	2.00	0.44
1:A:27:PRO:HB3	1:A:74:ALA:HB1	1.99	0.43
1:A:94:ILE:O	1:A:245:MET:HE3	2.18	0.43
1:B:86:VAL:HG21	1:B:135:ILE:HG12	2.00	0.43
1:A:157:LYS:HG3	5:A:665:HOH:O	2.18	0.43
1:A:317:THR:O	1:A:321:GLN:HB3	2.19	0.43
1:B:290:GLN:NE2	1:B:290:GLN:HA	2.33	0.43
1:B:163:ILE:HG12	1:B:168:LEU:HD23	2.00	0.42
1:B:158:VAL:HA	1:B:240:SER:O	2.19	0.42
1:B:184:MET:HG2	1:B:194:VAL:HG21	2.01	0.42
1:B:253:GLU:HG2	1:B:254:GLU:N	2.34	0.42
1:A:86:VAL:HG21	1:A:135:ILE:HG12	2.01	0.42
1:A:154:PHE:HA	1:A:244:HIS:O	2.20	0.41
1:A:325:GLY:CA	1:A:361:ASN:HB3	2.49	0.41
1:A:85:VAL:HG23	1:A:86:VAL:N	2.35	0.41
1:B:82:TYR:HA	1:B:86:VAL:HG23	2.03	0.41
1:B:184:MET:CE	1:B:318:ARG:HE	2.33	0.41
1:B:312:ARG:HA	1:B:318:ARG:CG	2.50	0.41
1:A:45:PRO:HD2	5:A:647:HOH:O	2.20	0.41
1:B:72:PHE:CD1	1:B:76:THR:HG21	2.56	0.41
1:B:329:ARG:HG2	1:B:329:ARG:HH11	1.86	0.41
1:B:184:MET:HE3	1:B:318:ARG:NH2	2.34	0.41
1:B:256:VAL:O	1:B:256:VAL:HG23	2.20	0.41
1:B:57:LEU:HD12	1:B:57:LEU:N	2.35	0.41
1:B:47:ARG:HG2	1:B:49:GLU:CD	2.41	0.41
1:B:89:ILE:O	1:B:93:VAL:HG23	2.21	0.40
1:A:263:LEU:HD23	1:A:263:LEU:HA	1.87	0.40
1:A:57:LEU:HB2	1:A:60:LYS:O	2.22	0.40

There are no symmetry-related clashes.

5.3 Torsion angles [i](#)

5.3.1 Protein backbone [i](#)

In the following table, the Percentiles column shows the percent Ramachandran outliers of the chain as a percentile score with respect to all X-ray entries followed by that with respect to entries

of similar resolution.

The Analysed column shows the number of residues for which the backbone conformation was analysed, and the total number of residues.

Mol	Chain	Analysed	Favoured	Allowed	Outliers	Percentiles	
1	A	326/367 (89%)	314 (96%)	10 (3%)	2 (1%)	25	43
1	B	326/367 (89%)	320 (98%)	6 (2%)	0	100	100
All	All	652/734 (89%)	634 (97%)	16 (2%)	2 (0%)	41	61

All (2) Ramachandran outliers are listed below:

Mol	Chain	Res	Type
1	A	57	LEU
1	A	189	ARG

5.3.2 Protein sidechains [i](#)

In the following table, the Percentiles column shows the percent sidechain outliers of the chain as a percentile score with respect to all X-ray entries followed by that with respect to entries of similar resolution.

The Analysed column shows the number of residues for which the sidechain conformation was analysed, and the total number of residues.

Mol	Chain	Analysed	Rotameric	Outliers	Percentiles	
1	A	293/321 (91%)	279 (95%)	14 (5%)	25	48
1	B	293/321 (91%)	282 (96%)	11 (4%)	33	58
All	All	586/642 (91%)	561 (96%)	25 (4%)	29	53

All (25) residues with a non-rotameric sidechain are listed below:

Mol	Chain	Res	Type
1	A	57	LEU
1	A	59	ASP
1	A	145	GLU
1	A	161	LEU
1	A	173	ASN
1	A	199	LEU
1	A	221	ARG
1	A	226	THR
1	A	250	ILE
1	A	254	GLU

Continued on next page...

Continued from previous page...

Mol	Chain	Res	Type
1	A	289	ASN
1	A	293	LEU
1	A	330	THR
1	A	361	ASN
1	B	18	ASN
1	B	26	ARG
1	B	57	LEU
1	B	173	ASN
1	B	271	ASN
1	B	289	ASN
1	B	293	LEU
1	B	302	LEU
1	B	331	SER
1	B	341	LEU
1	B	350	LEU

Sometimes sidechains can be flipped to improve hydrogen bonding and reduce clashes. All (19) such sidechains are listed below:

Mol	Chain	Res	Type
1	A	173	ASN
1	A	229	ASN
1	A	262	ASN
1	A	287	ASN
1	A	289	ASN
1	A	342	ASN
1	A	361	ASN
1	B	18	ASN
1	B	20	GLN
1	B	141	HIS
1	B	142	GLN
1	B	173	ASN
1	B	212	GLN
1	B	262	ASN
1	B	271	ASN
1	B	289	ASN
1	B	290	GLN
1	B	358	ASN
1	B	361	ASN

5.3.3 RNA [i](#)

There are no RNA molecules in this entry.

5.4 Non-standard residues in protein, DNA, RNA chains [i](#)

There are no non-standard protein/DNA/RNA residues in this entry.

5.5 Carbohydrates [i](#)

There are no monosaccharides in this entry.

5.6 Ligand geometry [i](#)

Of 6 ligands modelled in this entry, 2 are monoatomic - leaving 4 for Mogul analysis.

In the following table, the Counts columns list the number of bonds (or angles) for which Mogul statistics could be retrieved, the number of bonds (or angles) that are observed in the model and the number of bonds (or angles) that are defined in the Chemical Component Dictionary. The Link column lists molecule types, if any, to which the group is linked. The Z score for a bond length (or angle) is the number of standard deviations the observed value is removed from the expected value. A bond length (or angle) with $|Z| > 2$ is considered an outlier worth inspection. RMSZ is the root-mean-square of all Z scores of the bond lengths (or angles).

Mol	Type	Chain	Res	Link	Bond lengths			Bond angles		
					Counts	RMSZ	# Z > 2	Counts	RMSZ	# Z > 2
3	ADP	B	600	2	24,29,29	1.56	5 (20%)	29,45,45	1.61	1 (3%)
4	N5T	A	604	-	25,26,26	2.88	14 (56%)	27,37,37	1.99	9 (33%)
3	ADP	A	601	2	24,29,29	1.52	5 (20%)	29,45,45	1.59	2 (6%)
4	N5T	B	605	-	25,26,26	2.96	14 (56%)	27,37,37	1.80	7 (25%)

In the following table, the Chirals column lists the number of chiral outliers, the number of chiral centers analysed, the number of these observed in the model and the number defined in the Chemical Component Dictionary. Similar counts are reported in the Torsion and Rings columns. '-' means no outliers of that kind were identified.

Mol	Type	Chain	Res	Link	Chirals	Torsions	Rings
3	ADP	B	600	2	-	7/12/32/32	0/3/3/3
4	N5T	A	604	-	-	5/16/28/28	0/3/3/3
3	ADP	A	601	2	-	8/12/32/32	0/3/3/3
4	N5T	B	605	-	-	5/16/28/28	0/3/3/3

All (38) bond length outliers are listed below:

Mol	Chain	Res	Type	Atoms	Z	Observed(Å)	Ideal(Å)
4	A	604	N5T	C14-C10	6.75	1.46	1.34
4	B	605	N5T	C14-C10	6.47	1.46	1.34
4	B	605	N5T	C3-C4	4.97	1.45	1.38
4	B	605	N5T	C23-C17	4.94	1.47	1.39
4	A	604	N5T	C19-C17	4.80	1.46	1.39
4	B	605	N5T	C19-C17	4.80	1.46	1.39
4	A	604	N5T	C3-C4	4.78	1.45	1.38
4	A	604	N5T	C23-C17	4.24	1.45	1.39
4	A	604	N5T	C17-C13	-3.87	1.48	1.52
4	B	605	N5T	C17-C13	-3.74	1.48	1.52
4	B	605	N5T	C22-C23	3.63	1.46	1.38
4	A	604	N5T	C20-C19	3.50	1.46	1.38
3	B	600	ADP	O4'-C1'	3.36	1.45	1.41
4	B	605	N5T	C6-C1	3.35	1.43	1.37
3	A	601	ADP	O4'-C1'	3.33	1.45	1.41
4	A	604	N5T	C6-C1	3.32	1.43	1.37
4	B	605	N5T	C20-C19	3.24	1.45	1.38
4	A	604	N5T	C5-C4	3.10	1.44	1.37
4	B	605	N5T	C21-C20	3.09	1.46	1.38
3	B	600	ADP	C2-N3	3.08	1.37	1.32
4	A	604	N5T	C22-C23	3.06	1.45	1.38
4	A	604	N5T	C21-C20	3.00	1.46	1.38
3	A	601	ADP	C2-N3	2.98	1.36	1.32
4	B	605	N5T	C22-C21	2.94	1.45	1.38
4	B	605	N5T	C2-C1	2.74	1.42	1.37
4	A	604	N5T	F41-C1	-2.67	1.29	1.36
4	A	604	N5T	C2-C1	2.53	1.41	1.37
4	A	604	N5T	C22-C21	2.53	1.44	1.38
3	A	601	ADP	C5'-C4'	2.53	1.59	1.51
3	B	600	ADP	C5-N7	-2.47	1.30	1.39
4	B	605	N5T	C5-C4	2.47	1.43	1.37
4	B	605	N5T	C2-C3	2.43	1.43	1.39
3	B	600	ADP	C4-N3	2.36	1.38	1.35
3	A	601	ADP	C5-N7	-2.35	1.31	1.39
4	B	605	N5T	C6-C5	2.13	1.42	1.38
3	A	601	ADP	C4-N3	2.13	1.38	1.35
3	B	600	ADP	C5'-C4'	2.12	1.58	1.51
4	A	604	N5T	C29-N30	-2.10	1.30	1.35

All (19) bond angle outliers are listed below:

Mol	Chain	Res	Type	Atoms	Z	Observed(°)	Ideal(°)
3	A	601	ADP	N3-C2-N1	-6.97	117.78	128.68
3	B	600	ADP	N3-C2-N1	-6.94	117.83	128.68
4	A	604	N5T	C6-C5-C4	-3.90	114.33	119.05
4	A	604	N5T	C35-N30-C31	3.69	127.21	115.77
4	A	604	N5T	C17-C13-C14	3.42	121.95	112.88
4	A	604	N5T	C31-N30-C29	-3.37	105.80	120.53
4	B	605	N5T	C35-N30-C31	3.29	125.97	115.77
4	B	605	N5T	C17-C13-C14	3.07	121.02	112.88
4	B	605	N5T	C23-C17-C19	3.04	122.08	118.29
4	B	605	N5T	C6-C5-C4	-3.01	115.41	119.05
4	A	604	N5T	C5-C4-C3	2.75	126.12	123.11
4	A	604	N5T	C23-C17-C19	2.63	121.57	118.29
4	A	604	N5T	C6-C1-C2	2.39	126.41	123.29
4	B	605	N5T	C31-N30-C29	-2.39	110.07	120.53
4	A	604	N5T	C3-C10-C14	2.20	131.25	126.85
3	A	601	ADP	C2-N1-C6	2.18	122.48	118.75
4	B	605	N5T	C22-C21-C20	2.15	123.93	119.93
4	A	604	N5T	F41-C1-C2	-2.07	115.30	118.25
4	B	605	N5T	C6-C1-C2	2.00	125.89	123.29

There are no chirality outliers.

All (25) torsion outliers are listed below:

Mol	Chain	Res	Type	Atoms
3	A	601	ADP	PA-O3A-PB-O2B
3	A	601	ADP	PA-O3A-PB-O3B
3	A	601	ADP	C5'-O5'-PA-O1A
3	A	601	ADP	C5'-O5'-PA-O2A
3	A	601	ADP	C5'-O5'-PA-O3A
3	B	600	ADP	PA-O3A-PB-O2B
3	B	600	ADP	C5'-O5'-PA-O1A
3	B	600	ADP	C5'-O5'-PA-O2A
3	B	600	ADP	C5'-O5'-PA-O3A
4	A	604	N5T	N30-C29-N12-C11
4	A	604	N5T	O39-C29-N12-C11
4	B	605	N5T	N30-C29-N12-C11
4	B	605	N5T	O39-C29-N12-C11
3	A	601	ADP	C3'-C4'-C5'-O5'
3	B	600	ADP	O4'-C4'-C5'-O5'
3	B	600	ADP	C3'-C4'-C5'-O5'
3	A	601	ADP	O4'-C4'-C5'-O5'
4	B	605	N5T	N30-C29-N12-C13
4	B	605	N5T	O39-C29-N12-C13

Continued on next page...

Continued from previous page...

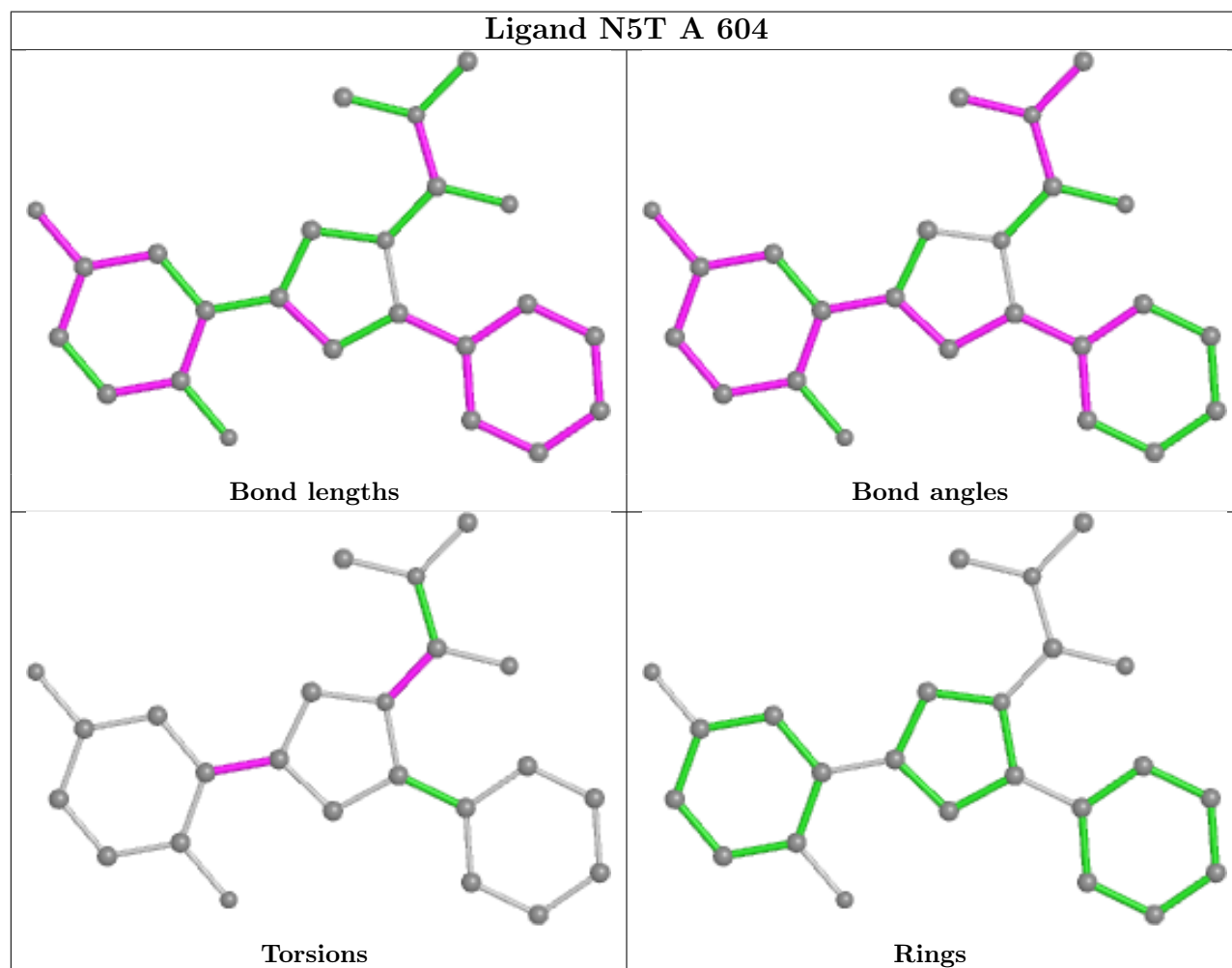
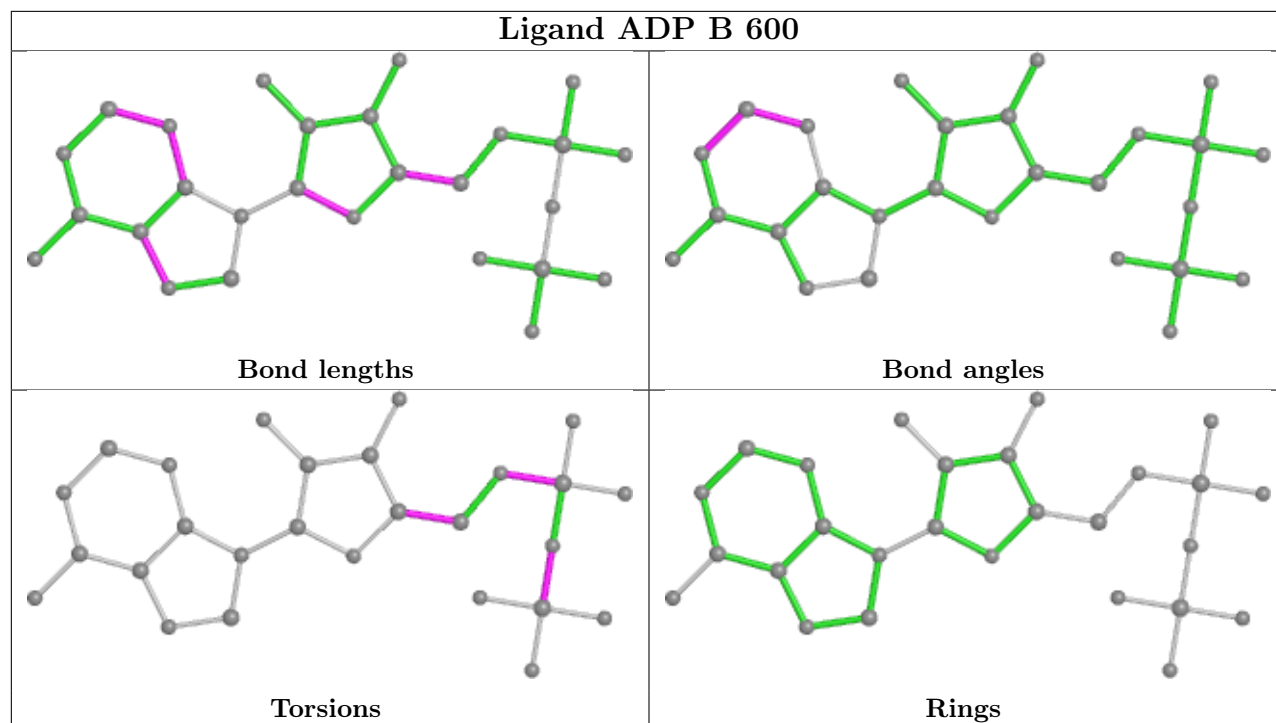
Mol	Chain	Res	Type	Atoms
3	B	600	ADP	PA-O3A-PB-O3B
4	A	604	N5T	C11-C10-C3-C4
4	A	604	N5T	N30-C29-N12-C13
4	A	604	N5T	O39-C29-N12-C13
4	B	605	N5T	N12-C29-N30-C35
3	A	601	ADP	PA-O3A-PB-O1B

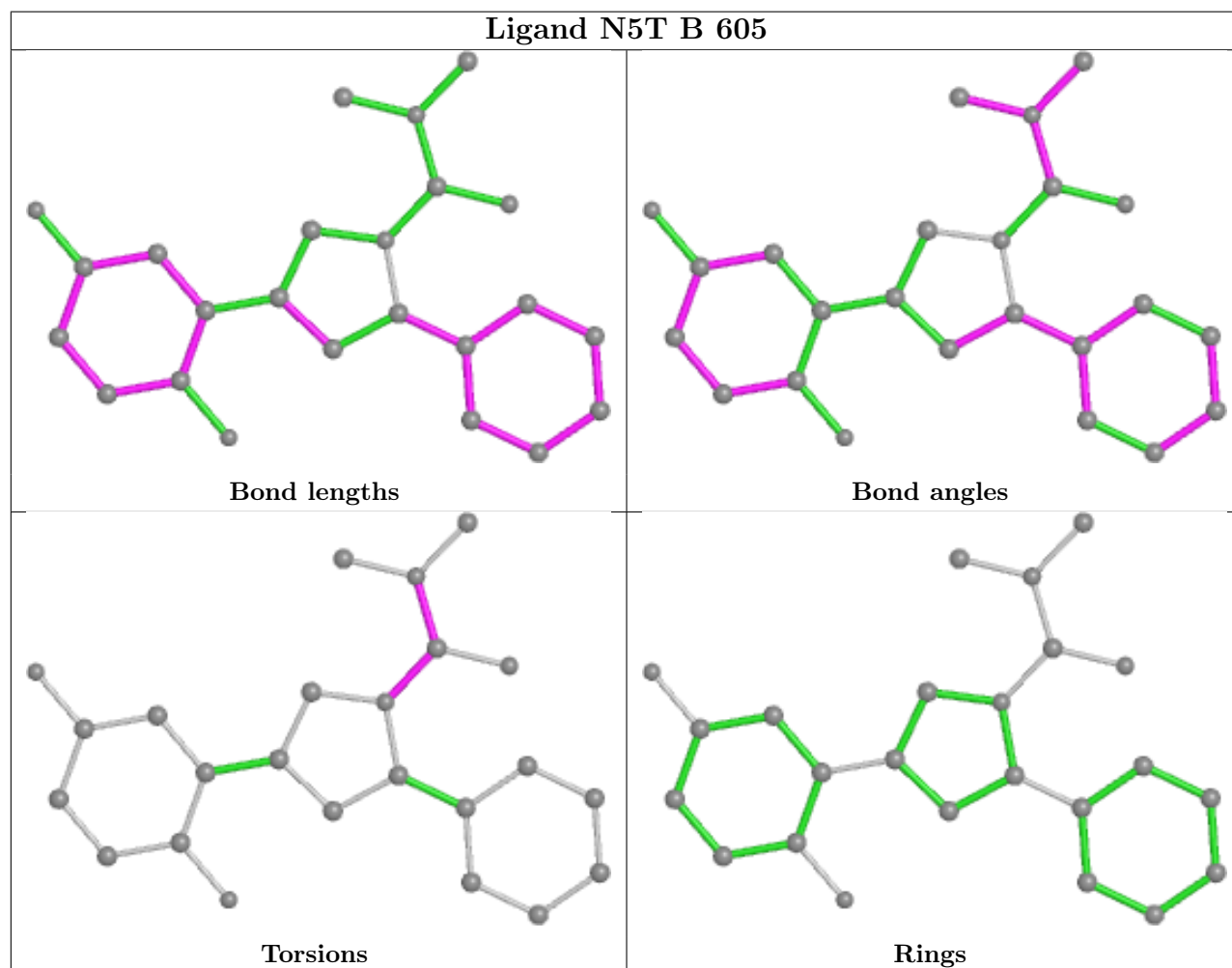
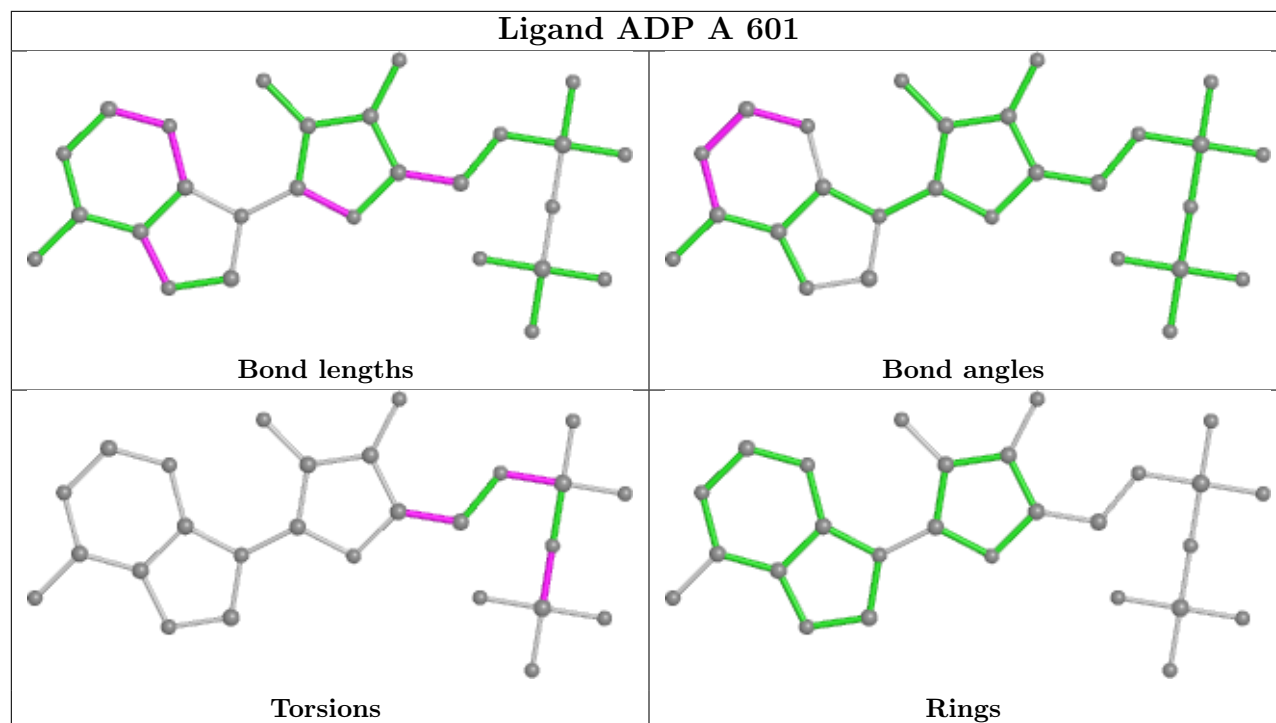
There are no ring outliers.

1 monomer is involved in 1 short contact:

Mol	Chain	Res	Type	Clashes	Symm-Clashes
4	A	604	N5T	1	0

The following is a two-dimensional graphical depiction of Mogul quality analysis of bond lengths, bond angles, torsion angles, and ring geometry for all instances of the Ligand of Interest. In addition, ligands with molecular weight > 250 and outliers as shown on the validation Tables will also be included. For torsion angles, if less than 5% of the Mogul distribution of torsion angles is within 10 degrees of the torsion angle in question, then that torsion angle is considered an outlier. Any bond that is central to one or more torsion angles identified as an outlier by Mogul will be highlighted in the graph. For rings, the root-mean-square deviation (RMSD) between the ring in question and similar rings identified by Mogul is calculated over all ring torsion angles. If the average RMSD is greater than 60 degrees and the minimal RMSD between the ring in question and any Mogul-identified rings is also greater than 60 degrees, then that ring is considered an outlier. The outliers are highlighted in purple. The color gray indicates Mogul did not find sufficient equivalents in the CSD to analyse the geometry.





5.7 Other polymers [i](#)

There are no such residues in this entry.

5.8 Polymer linkage issues [i](#)

There are no chain breaks in this entry.

6 Fit of model and data [i](#)

6.1 Protein, DNA and RNA chains [i](#)

EDS was not executed - this section is therefore empty.

6.2 Non-standard residues in protein, DNA, RNA chains [i](#)

EDS was not executed - this section is therefore empty.

6.3 Carbohydrates [i](#)

EDS was not executed - this section is therefore empty.

6.4 Ligands [i](#)

EDS was not executed - this section is therefore empty.

6.5 Other polymers [i](#)

EDS was not executed - this section is therefore empty.