



# Full wwPDB X-ray Structure Validation Report ⓘ

Feb 18, 2024 – 05:56 PM EST

PDB ID : 4FLK  
Title : Human MetAP1 with bengamide analog Y10, in Mn form  
Authors : Ye, Q.Z.; Xu, W.  
Deposited on : 2012-06-14  
Resolution : 1.47 Å(reported)

This is a Full wwPDB X-ray Structure Validation Report for a publicly released PDB entry.

We welcome your comments at [validation@mail.wwpdb.org](mailto:validation@mail.wwpdb.org)

A user guide is available at

<https://www.wwpdb.org/validation/2017/XrayValidationReportHelp>

with specific help available everywhere you see the ⓘ symbol.

The types of validation reports are described at

<http://www.wwpdb.org/validation/2017/FAQs#types>.

---

The following versions of software and data (see [references ⓘ](#)) were used in the production of this report:

MolProbity : 4.02b-467  
Mogul : 1.8.5 (274361), CSD as541be (2020)  
Xtriage (Phenix) : 1.13  
EDS : 2.36  
buster-report : 1.1.7 (2018)  
Percentile statistics : 20191225.v01 (using entries in the PDB archive December 25th 2019)  
Refmac : 5.8.0158  
CCP4 : 7.0.044 (Gargrove)  
Ideal geometry (proteins) : Engh & Huber (2001)  
Ideal geometry (DNA, RNA) : Parkinson et al. (1996)  
Validation Pipeline (wwPDB-VP) : 2.36

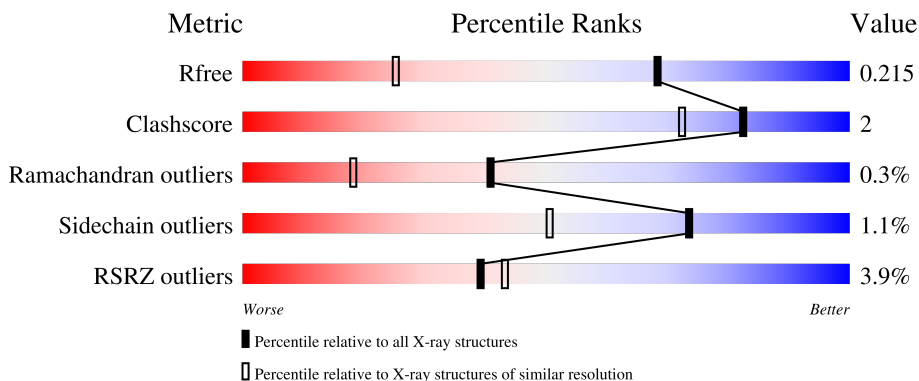
# 1 Overall quality at a glance

The following experimental techniques were used to determine the structure:

*X-RAY DIFFRACTION*

The reported resolution of this entry is 1.47 Å.

Percentile scores (ranging between 0-100) for global validation metrics of the entry are shown in the following graphic. The table shows the number of entries on which the scores are based.



Metric	Whole archive (#Entries)	Similar resolution (#Entries, resolution range(Å))
$R_{free}$	130704	4690 (1.50-1.46)
Clashscore	141614	4955 (1.50-1.46)
Ramachandran outliers	138981	4846 (1.50-1.46)
Sidechain outliers	138945	4844 (1.50-1.46)
RSRZ outliers	127900	4614 (1.50-1.46)

The table below summarises the geometric issues observed across the polymeric chains and their fit to the electron density. The red, orange, yellow and green segments of the lower bar indicate the fraction of residues that contain outliers for  $\geq 3$ , 2, 1 and 0 types of geometric quality criteria respectively. A grey segment represents the fraction of residues that are not modelled. The numeric value for each fraction is indicated below the corresponding segment, with a dot representing fractions  $\leq 5\%$ . The upper red bar (where present) indicates the fraction of residues that have poor fit to the electron density. The numeric value is given above the bar.

Mol	Chain	Length	Quality of chain
1	A	326	<p>4% 81% 12% 7%</p>

## 2 Entry composition

There are 5 unique types of molecules in this entry. The entry contains 2599 atoms, of which 0 are hydrogens and 0 are deuteriums.

In the tables below, the ZeroOcc column contains the number of atoms modelled with zero occupancy, the AltConf column contains the number of residues with at least one atom in alternate conformation and the Trace column contains the number of residues modelled with at most 2 atoms.

- Molecule 1 is a protein called Methionine aminopeptidase 1.

Mol	Chain	Residues	Atoms					ZeroOcc	AltConf	Trace
			Total	C	N	O	S			
1	A	304	2415	1516	432	446	21	0	3	0

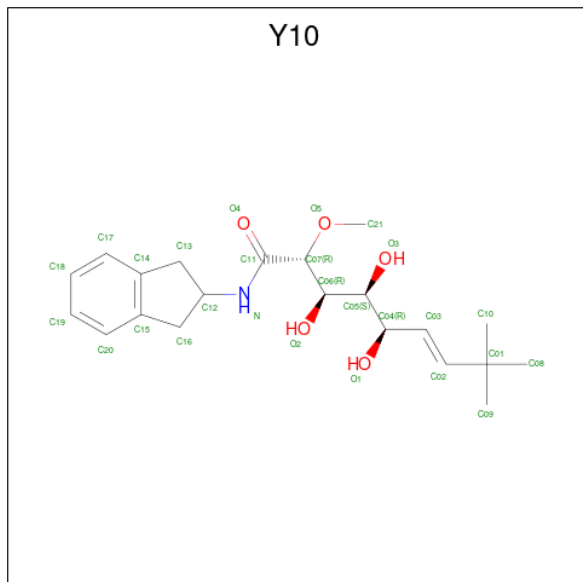
There are 20 discrepancies between the modelled and reference sequences:

Chain	Residue	Modelled	Actual	Comment	Reference
A	89	MET	-	expression tag	UNP P53582
A	396	GLU	-	expression tag	UNP P53582
A	397	PHE	-	expression tag	UNP P53582
A	398	GLU	-	expression tag	UNP P53582
A	399	LEU	-	expression tag	UNP P53582
A	400	VAL	-	expression tag	UNP P53582
A	401	ASP	-	expression tag	UNP P53582
A	402	LYS	-	expression tag	UNP P53582
A	403	LEU	-	expression tag	UNP P53582
A	404	ALA	-	expression tag	UNP P53582
A	405	ALA	-	expression tag	UNP P53582
A	406	ALA	-	expression tag	UNP P53582
A	407	LEU	-	expression tag	UNP P53582
A	408	GLU	-	expression tag	UNP P53582
A	409	HIS	-	expression tag	UNP P53582
A	410	HIS	-	expression tag	UNP P53582
A	411	HIS	-	expression tag	UNP P53582
A	412	HIS	-	expression tag	UNP P53582
A	413	HIS	-	expression tag	UNP P53582
A	414	HIS	-	expression tag	UNP P53582

- Molecule 2 is MANGANESE (II) ION (three-letter code: MN) (formula: Mn).

Mol	Chain	Residues	Atoms		ZeroOcc	AltConf
2	A	2	Total	Mn	0	0
			2	2		

- Molecule 3 is (E,2R,3R,4S,5R)-N-(2,3-dihydro-1H-inden-2-yl)-2-methoxy-8,8-dimethyl-3,4,5-tris(oxidanyl)non-6-enamide (three-letter code: Y10) (formula: C<sub>21</sub>H<sub>31</sub>NO<sub>5</sub>).



Mol	Chain	Residues	Atoms				ZeroOcc	AltConf
			Total	C	N	O		
3	A	1	27	21	1	5	0	0

- Molecule 4 is SODIUM ION (three-letter code: NA) (formula: Na).

Mol	Chain	Residues	Atoms		ZeroOcc	AltConf
			Total	Na		
4	A	1	1	1	0	0

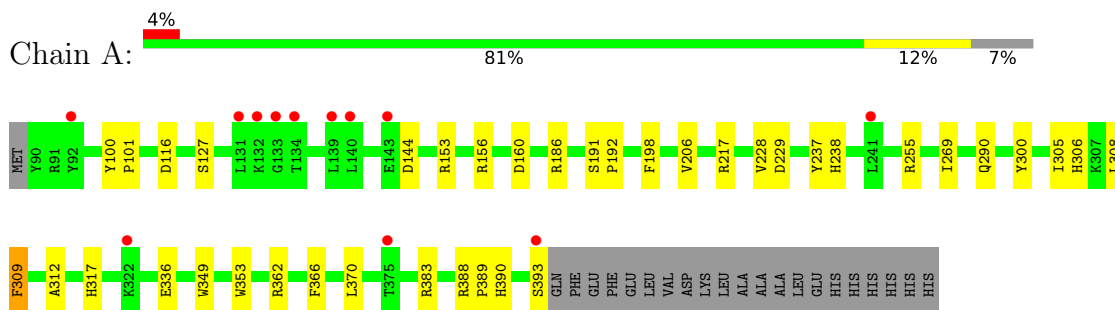
- Molecule 5 is water.

Mol	Chain	Residues	Atoms		ZeroOcc	AltConf
			Total	O		
5	A	154	154	154	0	0

### 3 Residue-property plots [i](#)

These plots are drawn for all protein, RNA, DNA and oligosaccharide chains in the entry. The first graphic for a chain summarises the proportions of the various outlier classes displayed in the second graphic. The second graphic shows the sequence view annotated by issues in geometry and electron density. Residues are color-coded according to the number of geometric quality criteria for which they contain at least one outlier: green = 0, yellow = 1, orange = 2 and red = 3 or more. A red dot above a residue indicates a poor fit to the electron density ( $RSRZ > 2$ ). Stretches of 2 or more consecutive residues without any outlier are shown as a green connector. Residues present in the sample, but not in the model, are shown in grey.

- Molecule 1: Methionine aminopeptidase 1



## 4 Data and refinement statistics i

Property	Value	Source
Space group	P 1 21 1	Depositor
Cell constants a, b, c, $\alpha$ , $\beta$ , $\gamma$	47.78Å 77.51Å 48.62Å 90.00° 90.43° 90.00°	Depositor
Resolution (Å)	31.29 – 1.47 31.29 – 1.47	Depositor EDS
% Data completeness (in resolution range)	99.2 (31.29-1.47) 99.1 (31.29-1.47)	Depositor EDS
$R_{merge}$	0.10	Depositor
$R_{sym}$	(Not available)	Depositor
$\langle I/\sigma(I) \rangle$ <sup>1</sup>	4.25 (at 1.47Å)	Xtrriage
Refinement program	REFMAC	Depositor
R, $R_{free}$	0.199 , 0.221 0.194 , 0.215	Depositor DCC
$R_{free}$ test set	3030 reflections (5.05%)	wwPDB-VP
Wilson B-factor (Å <sup>2</sup> )	19.0	Xtrriage
Anisotropy	0.143	Xtrriage
Bulk solvent $k_{sol}$ (e/Å <sup>3</sup> ), $B_{sol}$ (Å <sup>2</sup> )	0.39 , 43.3	EDS
L-test for twinning <sup>2</sup>	$\langle  L  \rangle = 0.50$ , $\langle L^2 \rangle = 0.33$	Xtrriage
Estimated twinning fraction	0.000 for l,k,-h 0.028 for h,-k,-l 0.019 for l,-k,h	Xtrriage
$F_o, F_c$ correlation	0.96	EDS
Total number of atoms	2599	wwPDB-VP
Average B, all atoms (Å <sup>2</sup> )	22.0	wwPDB-VP

Xtrriage's analysis on translational NCS is as follows: *The largest off-origin peak in the Patterson function is 5.98% of the height of the origin peak. No significant pseudotranslation is detected.*

<sup>1</sup>Intensities estimated from amplitudes.

<sup>2</sup>Theoretical values of  $\langle |L| \rangle$ ,  $\langle L^2 \rangle$  for acentric reflections are 0.5, 0.333 respectively for untwinned datasets, and 0.375, 0.2 for perfectly twinned datasets.

## 5 Model quality i

### 5.1 Standard geometry i

Bond lengths and bond angles in the following residue types are not validated in this section: NA, Y10, MN

The Z score for a bond length (or angle) is the number of standard deviations the observed value is removed from the expected value. A bond length (or angle) with  $|Z| > 5$  is considered an outlier worth inspection. RMSZ is the root-mean-square of all Z scores of the bond lengths (or angles).

Mol	Chain	Bond lengths		Bond angles	
		RMSZ	# Z  >5	RMSZ	# Z  >5
1	A	1.44	10/2475 (0.4%)	1.35	21/3359 (0.6%)

All (10) bond length outliers are listed below:

Mol	Chain	Res	Type	Atoms	Z	Observed(Å)	Ideal(Å)
1	A	229	ASP	CB-CG	6.23	1.64	1.51
1	A	353	TRP	CE3-CZ3	5.67	1.48	1.38
1	A	228	VAL	CB-CG2	5.66	1.64	1.52
1	A	309	PHE	CE2-CZ	5.57	1.48	1.37
1	A	192	PRO	N-CD	5.40	1.55	1.47
1	A	127	SER	CB-OG	5.38	1.49	1.42
1	A	312	ALA	CA-CB	5.21	1.63	1.52
1	A	206	VAL	CB-CG1	5.17	1.63	1.52
1	A	349	TRP	CE2-CZ2	5.13	1.48	1.39
1	A	305	ILE	CA-CB	5.00	1.66	1.54

All (21) bond angle outliers are listed below:

Mol	Chain	Res	Type	Atoms	Z	Observed(°)	Ideal(°)
1	A	229	ASP	CB-CG-OD1	-10.63	108.73	118.30
1	A	156	ARG	NE-CZ-NH2	9.39	125.00	120.30
1	A	229	ASP	CB-CG-OD2	-8.83	110.36	118.30
1	A	156	ARG	NE-CZ-NH1	-8.45	116.08	120.30
1	A	309	PHE	CB-CG-CD2	-8.31	114.98	120.80
1	A	366	PHE	CB-CG-CD1	-8.31	114.98	120.80
1	A	229	ASP	OD1-CG-OD2	8.00	138.49	123.30
1	A	153	ARG	NE-CZ-NH2	-7.21	116.70	120.30
1	A	186	ARG	NE-CZ-NH2	-6.91	116.84	120.30
1	A	116	ASP	CB-CG-OD1	6.13	123.82	118.30
1	A	362	ARG	NE-CZ-NH2	-6.12	117.24	120.30

*Continued on next page...*

Continued from previous page...

Mol	Chain	Res	Type	Atoms	Z	Observed(°)	Ideal(°)
1	A	217	ARG	NE-CZ-NH1	6.02	123.31	120.30
1	A	186	ARG	NE-CZ-NH1	5.94	123.27	120.30
1	A	144	ASP	CB-CG-OD2	-5.91	112.98	118.30
1	A	198	PHE	CB-CG-CD1	-5.88	116.69	120.80
1	A	383	ARG	NE-CZ-NH1	5.64	123.12	120.30
1	A	237	TYR	CD1-CE1-CZ	-5.45	114.90	119.80
1	A	237	TYR	CB-CG-CD2	-5.23	117.86	121.00
1	A	366	PHE	CD1-CG-CD2	5.23	125.10	118.30
1	A	300	TYR	CB-CG-CD2	-5.08	117.95	121.00
1	A	255	ARG	NE-CZ-NH1	-5.07	117.77	120.30

There are no chirality outliers.

There are no planarity outliers.

## 5.2 Too-close contacts

In the following table, the Non-H and H(model) columns list the number of non-hydrogen atoms and hydrogen atoms in the chain respectively. The H(added) column lists the number of hydrogen atoms added and optimized by MolProbity. The Clashes column lists the number of clashes within the asymmetric unit, whereas Symm-Clashes lists symmetry-related clashes.

Mol	Chain	Non-H	H(model)	H(added)	Clashes	Symm-Clashes
1	A	2415	0	2358	10	0
2	A	2	0	0	0	0
3	A	27	0	28	2	0
4	A	1	0	0	0	0
5	A	154	0	0	3	0
All	All	2599	0	2386	12	0

The all-atom clashscore is defined as the number of clashes found per 1000 atoms (including hydrogen atoms). The all-atom clashscore for this structure is 2.

All (12) close contacts within the same asymmetric unit are listed below, sorted by their clash magnitude.

Atom-1	Atom-2	Interatomic distance (Å)	Clash overlap (Å)
1:A:390:HIS:HD2	5:A:737:HOH:O	1.65	0.78
1:A:317:HIS:HE1	1:A:336:GLU:H	1.40	0.69
1:A:317:HIS:CE1	1:A:336:GLU:H	2.13	0.65
1:A:393:SER:HB3	5:A:722:HOH:O	1.96	0.64
1:A:238:HIS:HE1	5:A:668:HOH:O	1.83	0.60

Continued on next page...



Continued from previous page...

Atom-1	Atom-2	Interatomic distance (Å)	Clash overlap (Å)
3:A:503:Y10:C16	3:A:503:Y10:O4	2.49	0.59
1:A:160:ASP:OD1	1:A:390:HIS:HE1	1.88	0.57
1:A:269:ILE:HG12	1:A:370:LEU:HD11	1.91	0.53
1:A:191:SER:OG	1:A:238:HIS:HD2	1.95	0.50
3:A:503:Y10:O4	3:A:503:Y10:H16	2.17	0.44
1:A:100:TYR:HB3	1:A:101:PRO:HA	2.00	0.44
1:A:388:ARG:HB3	1:A:389:PRO:HD2	2.00	0.42

There are no symmetry-related clashes.

## 5.3 Torsion angles [i](#)

### 5.3.1 Protein backbone [i](#)

In the following table, the Percentiles column shows the percent Ramachandran outliers of the chain as a percentile score with respect to all X-ray entries followed by that with respect to entries of similar resolution.

The Analysed column shows the number of residues for which the backbone conformation was analysed, and the total number of residues.

Mol	Chain	Analysed	Favoured	Allowed	Outliers	Percentiles
1	A	305/326 (94%)	299 (98%)	5 (2%)	1 (0%)	41 18

All (1) Ramachandran outliers are listed below:

Mol	Chain	Res	Type
1	A	306	HIS

### 5.3.2 Protein sidechains [i](#)

In the following table, the Percentiles column shows the percent sidechain outliers of the chain as a percentile score with respect to all X-ray entries followed by that with respect to entries of similar resolution.

The Analysed column shows the number of residues for which the sidechain conformation was analysed, and the total number of residues.

Mol	Chain	Analysed	Rotameric	Outliers	Percentiles
1	A	264/280 (94%)	261 (99%)	3 (1%)	73 50

All (3) residues with a non-rotameric sidechain are listed below:

Mol	Chain	Res	Type
1	A	290	GLN
1	A	308	LEU
1	A	309	PHE

Sometimes sidechains can be flipped to improve hydrogen bonding and reduce clashes. All (4) such sidechains are listed below:

Mol	Chain	Res	Type
1	A	197	ASN
1	A	238	HIS
1	A	317	HIS
1	A	390	HIS

### 5.3.3 RNA [i](#)

There are no RNA molecules in this entry.

## 5.4 Non-standard residues in protein, DNA, RNA chains [i](#)

There are no non-standard protein/DNA/RNA residues in this entry.

## 5.5 Carbohydrates [i](#)

There are no monosaccharides in this entry.

## 5.6 Ligand geometry [i](#)

Of 4 ligands modelled in this entry, 3 are monoatomic - leaving 1 for Mogul analysis.

In the following table, the Counts columns list the number of bonds (or angles) for which Mogul statistics could be retrieved, the number of bonds (or angles) that are observed in the model and the number of bonds (or angles) that are defined in the Chemical Component Dictionary. The Link column lists molecule types, if any, to which the group is linked. The Z score for a bond length (or angle) is the number of standard deviations the observed value is removed from the expected value. A bond length (or angle) with  $|Z| > 2$  is considered an outlier worth inspection. RMSZ is the root-mean-square of all Z scores of the bond lengths (or angles).

Mol	Type	Chain	Res	Link	Bond lengths			Bond angles		
					Counts	RMSZ	$\# Z  > 2$	Counts	RMSZ	$\# Z  > 2$
3	Y10	A	503	2	28,28,28	1.63	7 (25%)	33,40,40	2.40	13 (39%)

In the following table, the Chirals column lists the number of chiral outliers, the number of chiral centers analysed, the number of these observed in the model and the number defined in the Chemical Component Dictionary. Similar counts are reported in the Torsion and Rings columns. '-' means no outliers of that kind were identified.

Mol	Type	Chain	Res	Link	Chirals	Torsions	Rings
3	Y10	A	503	2	-	6/28/36/36	0/2/2/2

All (7) bond length outliers are listed below:

Mol	Chain	Res	Type	Atoms	Z	Observed(Å)	Ideal(Å)
3	A	503	Y10	O2-C06	-3.04	1.35	1.43
3	A	503	Y10	C04-C03	2.96	1.55	1.50
3	A	503	Y10	C13-C14	2.81	1.55	1.50
3	A	503	Y10	C20-C15	2.69	1.44	1.39
3	A	503	Y10	C12-N	2.26	1.51	1.46
3	A	503	Y10	C03-C02	2.24	1.37	1.31
3	A	503	Y10	O1-C04	2.08	1.47	1.43

All (13) bond angle outliers are listed below:

Mol	Chain	Res	Type	Atoms	Z	Observed(°)	Ideal(°)
3	A	503	Y10	C04-C03-C02	-6.17	112.41	124.75
3	A	503	Y10	O2-C06-C05	-4.46	99.10	109.47
3	A	503	Y10	C12-N-C11	-4.25	116.42	123.20
3	A	503	Y10	C13-C14-C15	4.07	113.35	110.56
3	A	503	Y10	C15-C16-C12	4.05	106.67	102.76
3	A	503	Y10	C20-C15-C14	3.33	124.02	120.11
3	A	503	Y10	C16-C15-C14	-3.33	108.27	110.56
3	A	503	Y10	C07-C11-N	-3.11	111.09	117.73
3	A	503	Y10	O2-C06-C07	3.02	114.34	109.43
3	A	503	Y10	C19-C20-C15	-2.84	116.65	120.89
3	A	503	Y10	C10-C01-C09	2.69	115.43	109.04
3	A	503	Y10	C17-C14-C15	-2.53	117.14	120.11
3	A	503	Y10	O4-C11-C07	2.47	125.39	119.55

There are no chirality outliers.

All (6) torsion outliers are listed below:

Mol	Chain	Res	Type	Atoms
3	A	503	Y10	C16-C12-N-C11
3	A	503	Y10	O5-C07-C11-N
3	A	503	Y10	O5-C07-C11-O4

*Continued on next page...*

*Continued from previous page...*

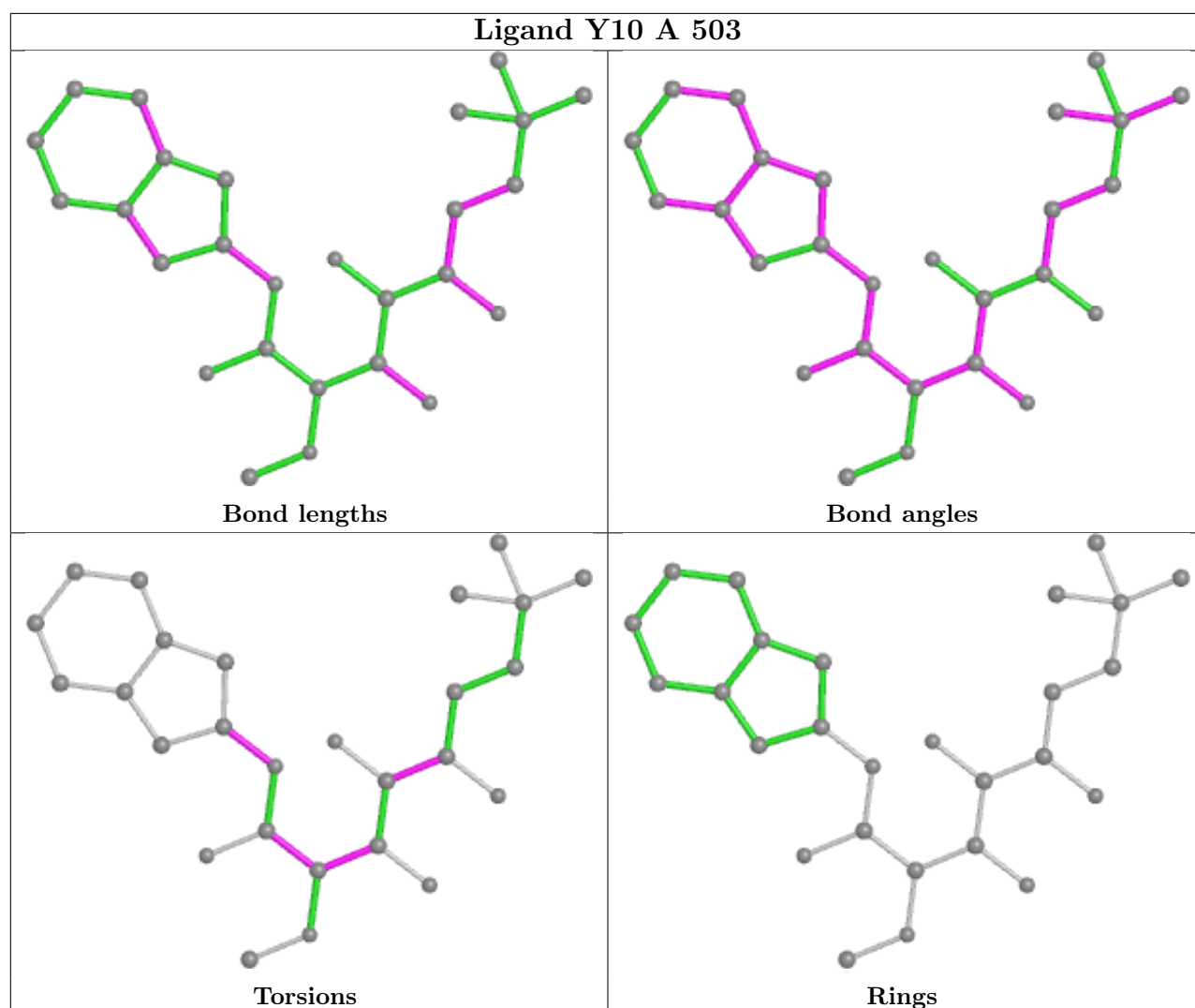
Mol	Chain	Res	Type	Atoms
3	A	503	Y10	O1-C04-C05-O3
3	A	503	Y10	O2-C06-C07-C11
3	A	503	Y10	O2-C06-C07-O5

There are no ring outliers.

1 monomer is involved in 2 short contacts:

Mol	Chain	Res	Type	Clashes	Symm-Clashes
3	A	503	Y10	2	0

The following is a two-dimensional graphical depiction of Mogul quality analysis of bond lengths, bond angles, torsion angles, and ring geometry for all instances of the Ligand of Interest. In addition, ligands with molecular weight > 250 and outliers as shown on the validation Tables will also be included. For torsion angles, if less than 5% of the Mogul distribution of torsion angles is within 10 degrees of the torsion angle in question, then that torsion angle is considered an outlier. Any bond that is central to one or more torsion angles identified as an outlier by Mogul will be highlighted in the graph. For rings, the root-mean-square deviation (RMSD) between the ring in question and similar rings identified by Mogul is calculated over all ring torsion angles. If the average RMSD is greater than 60 degrees and the minimal RMSD between the ring in question and any Mogul-identified rings is also greater than 60 degrees, then that ring is considered an outlier. The outliers are highlighted in purple. The color gray indicates Mogul did not find sufficient equivalents in the CSD to analyse the geometry.



## 5.7 Other polymers [i](#)

There are no such residues in this entry.

## 5.8 Polymer linkage issues [i](#)

There are no chain breaks in this entry.

## 6 Fit of model and data [i](#)

### 6.1 Protein, DNA and RNA chains [i](#)

In the following table, the column labelled ‘#RSRZ> 2’ contains the number (and percentage) of RSRZ outliers, followed by percent RSRZ outliers for the chain as percentile scores relative to all X-ray entries and entries of similar resolution. The OWAB column contains the minimum, median, 95<sup>th</sup> percentile and maximum values of the occupancy-weighted average B-factor per residue. The column labelled ‘Q< 0.9’ lists the number of (and percentage) of residues with an average occupancy less than 0.9.

Mol	Chain	Analysed	<RSRZ>	#RSRZ>2	OWAB(Å <sup>2</sup> )	Q<0.9
1	A	304/326 (93%)	0.24	12 (3%) 39 43	11, 21, 36, 55	0

All (12) RSRZ outliers are listed below:

Mol	Chain	Res	Type	RSRZ
1	A	133	GLY	8.2
1	A	139	LEU	4.9
1	A	322	LYS	3.8
1	A	393	SER	3.6
1	A	132	LYS	3.5
1	A	375	THR	3.5
1	A	134	THR	3.2
1	A	92	TYR	2.7
1	A	241	LEU	2.4
1	A	131	LEU	2.4
1	A	143	GLU	2.3
1	A	140	LEU	2.1

### 6.2 Non-standard residues in protein, DNA, RNA chains [i](#)

There are no non-standard protein/DNA/RNA residues in this entry.

### 6.3 Carbohydrates [i](#)

There are no monosaccharides in this entry.

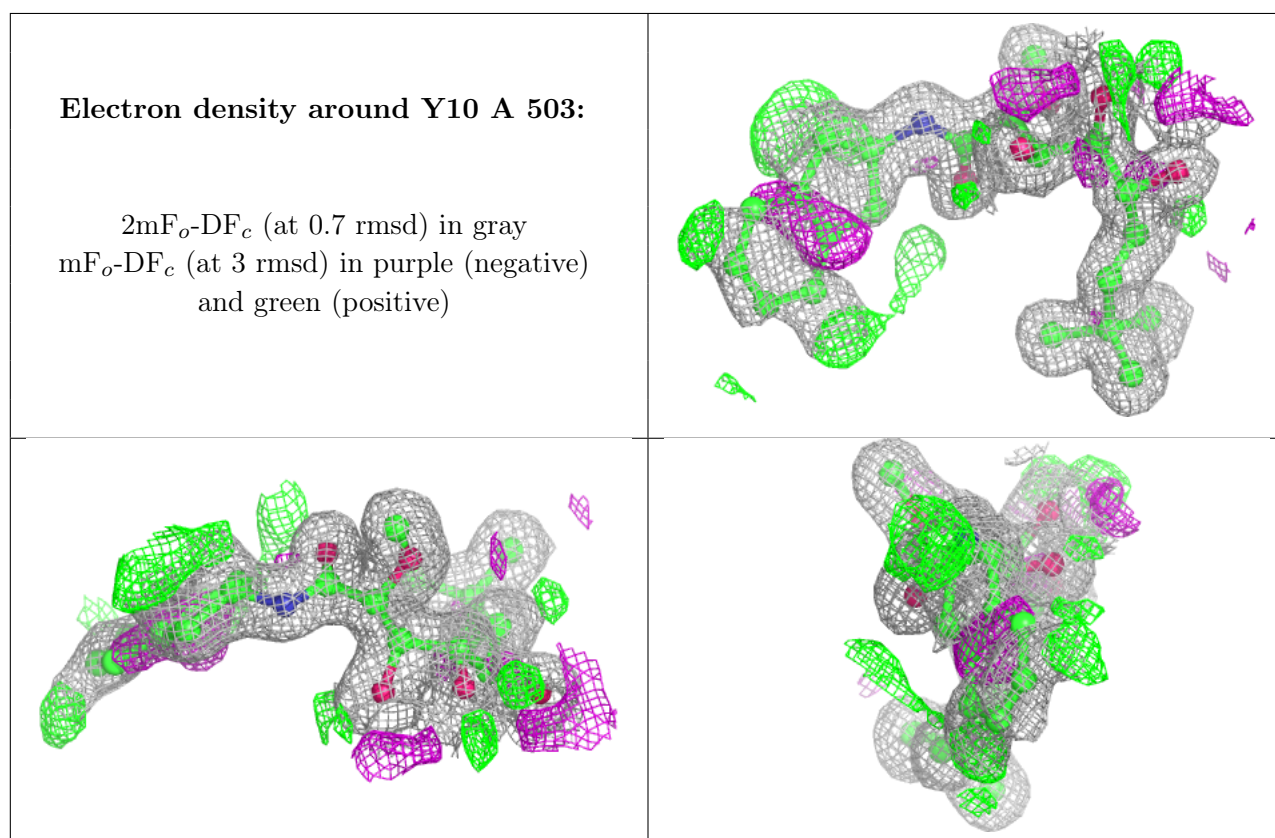
### 6.4 Ligands [i](#)

In the following table, the Atoms column lists the number of modelled atoms in the group and the number defined in the chemical component dictionary. The B-factors column lists the minimum,

median, 95<sup>th</sup> percentile and maximum values of B factors of atoms in the group. The column labelled 'Q< 0.9' lists the number of atoms with occupancy less than 0.9.

Mol	Type	Chain	Res	Atoms	RSCC	RSR	B-factors(Å <sup>2</sup> )	Q<0.9
3	Y10	A	503	27/27	0.91	0.14	12,16,42,45	0
4	NA	A	504	1/1	0.99	0.06	15,15,15,15	0
2	MN	A	501	1/1	1.00	0.08	13,13,13,13	0
2	MN	A	502	1/1	1.00	0.08	12,12,12,12	0

The following is a graphical depiction of the model fit to experimental electron density of all instances of the Ligand of Interest. In addition, ligands with molecular weight > 250 and outliers as shown on the geometry validation Tables will also be included. Each fit is shown from different orientation to approximate a three-dimensional view.



## 6.5 Other polymers [i](#)

There are no such residues in this entry.