



Full wwPDB X-ray Structure Validation Report ⓘ

Oct 25, 2022 – 12:58 PM EDT

PDB ID : 7FL1
Title : PanDDA analysis group deposition – Aar2/RNaseH in complex with fragment P04H03 from the F2X-Universal Library
Authors : Barthel, T.; Wollenhaupt, J.; Lima, G.M.A.; Wahl, M.C.; Weiss, M.S.
Deposited on : 2022-08-26
Resolution : 1.55 Å(reported)

This is a Full wwPDB X-ray Structure Validation Report for a publicly released PDB entry.

We welcome your comments at validation@mail.wwpdb.org

A user guide is available at

<https://www.wwpdb.org/validation/2017/XrayValidationReportHelp>

with specific help available everywhere you see the ⓘ symbol.

The types of validation reports are described at

<http://www.wwpdb.org/validation/2017/FAQs#types>.

The following versions of software and data (see [references ⓘ](#)) were used in the production of this report:

MolProbity : 4.02b-467
Mogul : 1.8.5 (274361), CSD as541be (2020)
Xtriage (Phenix) : 1.13
EDS : 2.31.2
Percentile statistics : 20191225.v01 (using entries in the PDB archive December 25th 2019)
Refmac : 5.8.0158
CCP4 : 7.0.044 (Gargrove)
Ideal geometry (proteins) : Engh & Huber (2001)
Ideal geometry (DNA, RNA) : Parkinson et al. (1996)
Validation Pipeline (wwPDB-VP) : 2.31.2

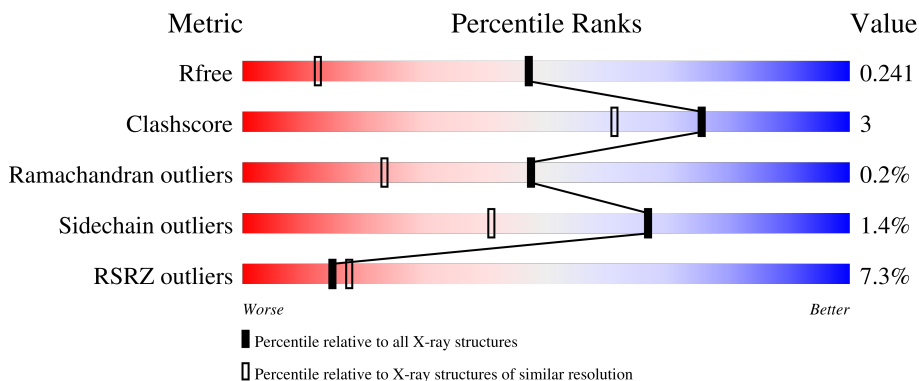
1 Overall quality at a glance

The following experimental techniques were used to determine the structure:

X-RAY DIFFRACTION

The reported resolution of this entry is 1.55 Å.

Percentile scores (ranging between 0-100) for global validation metrics of the entry are shown in the following graphic. The table shows the number of entries on which the scores are based.



Metric	Whole archive (#Entries)	Similar resolution (#Entries, resolution range(Å))
R_{free}	130704	1483 (1.56-1.56)
Clashscore	141614	1529 (1.56-1.56)
Ramachandran outliers	138981	1498 (1.56-1.56)
Sidechain outliers	138945	1495 (1.56-1.56)
RSRZ outliers	127900	1465 (1.56-1.56)

The table below summarises the geometric issues observed across the polymeric chains and their fit to the electron density. The red, orange, yellow and green segments of the lower bar indicate the fraction of residues that contain outliers for ≥ 3 , 2, 1 and 0 types of geometric quality criteria respectively. A grey segment represents the fraction of residues that are not modelled. The numeric value for each fraction is indicated below the corresponding segment, with a dot representing fractions $\leq 5\%$. The upper red bar (where present) indicates the fraction of residues that have poor fit to the electron density. The numeric value is given above the bar.

Mol	Chain	Length	Quality of chain
1	A	258	
2	B	308	

2 Entry composition

There are 4 unique types of molecules in this entry. The entry contains 9224 atoms, of which 4511 are hydrogens and 0 are deuteriums.

In the tables below, the ZeroOcc column contains the number of atoms modelled with zero occupancy, the AltConf column contains the number of residues with at least one atom in alternate conformation and the Trace column contains the number of residues modelled with at most 2 atoms.

- Molecule 1 is a protein called Pre-mRNA-splicing factor 8.

Mol	Chain	Residues	Atoms					ZeroOcc	AltConf	Trace	
			Total	C	H	N	O				S
1	A	237	4044	1281	2047	332	372	12	0	20	0

There are 3 discrepancies between the modelled and reference sequences:

Chain	Residue	Modelled	Actual	Comment	Reference
A	1833	GLY	-	expression tag	UNP P33334
A	1834	ALA	-	expression tag	UNP P33334
A	1835	MET	-	expression tag	UNP P33334

- Molecule 2 is a protein called A1 cistron-splicing factor AAR2.

Mol	Chain	Residues	Atoms					ZeroOcc	AltConf	Trace	
			Total	C	H	N	O				S
2	B	300	5044	1654	2464	421	485	20	11	17	0

There are 20 discrepancies between the modelled and reference sequences:

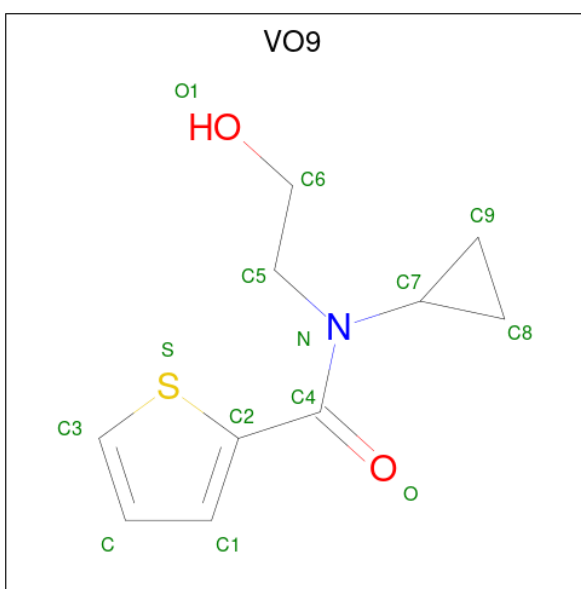
Chain	Residue	Modelled	Actual	Comment	Reference
B	-3	GLY	-	expression tag	UNP P32357
B	-2	ALA	-	expression tag	UNP P32357
B	-1	MET	-	expression tag	UNP P32357
B	0	ALA	-	expression tag	UNP P32357
B	166	SER	LEU	conflict	UNP P32357
B	167	SER	LYS	conflict	UNP P32357
B	?	-	LEU	deletion	UNP P32357
B	?	-	GLN	deletion	UNP P32357
B	?	-	LYS	deletion	UNP P32357
B	?	-	ALA	deletion	UNP P32357
B	?	-	GLY	deletion	UNP P32357
B	?	-	SER	deletion	UNP P32357
B	?	-	LYS	deletion	UNP P32357

Continued on next page...

Continued from previous page...

Chain	Residue	Modelled	Actual	Comment	Reference
B	?	-	MET	deletion	UNP P32357
B	?	-	GLU	deletion	UNP P32357
B	?	-	ALA	deletion	UNP P32357
B	?	-	LYS	deletion	UNP P32357
B	?	-	ASN	deletion	UNP P32357
B	?	-	GLU	deletion	UNP P32357
B	170	SER	ASP	conflict	UNP P32357

- Molecule 3 is N-cyclopropyl-N-(2-hydroxyethyl)thiophene-2-carboxamide (three-letter code: VO9) (formula: C₁₀H₁₃NO₂S).



Mol	Chain	Residues	Atoms					ZeroOcc	AltConf
			Total	C	N	O	S		
3	A	1	Total	C	N	O	S	0	0
			14	10	1	2	1		
3	A	1	Total	C	N	O	S	0	0
			14	10	1	2	1		

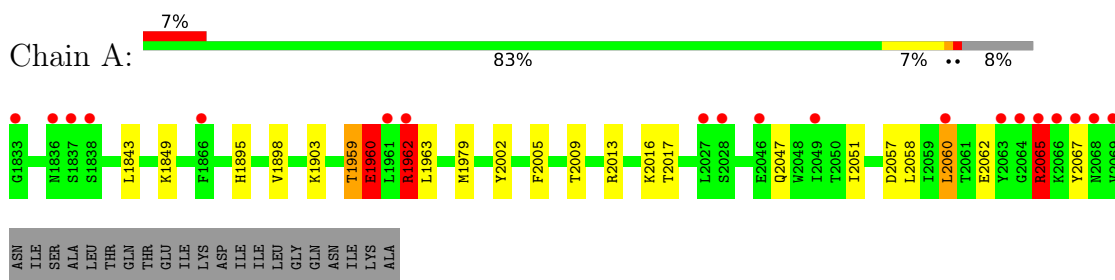
- Molecule 4 is water.

Mol	Chain	Residues	Atoms		ZeroOcc	AltConf
			Total	O		
4	A	48	Total	O	0	0
			48	48		
4	B	60	Total	O	0	0
			60	60		

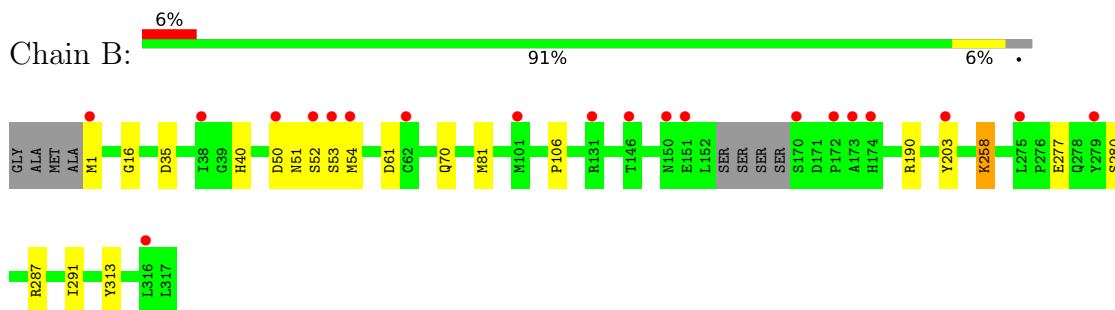
3 Residue-property plots [i](#)

These plots are drawn for all protein, RNA, DNA and oligosaccharide chains in the entry. The first graphic for a chain summarises the proportions of the various outlier classes displayed in the second graphic. The second graphic shows the sequence view annotated by issues in geometry and electron density. Residues are color-coded according to the number of geometric quality criteria for which they contain at least one outlier: green = 0, yellow = 1, orange = 2 and red = 3 or more. A red dot above a residue indicates a poor fit to the electron density ($RSRZ > 2$). Stretches of 2 or more consecutive residues without any outlier are shown as a green connector. Residues present in the sample, but not in the model, are shown in grey.

- Molecule 1: Pre-mRNA-splicing factor 8



- Molecule 2: A1 cistron-splicing factor AAR2



4 Data and refinement statistics

Property	Value	Source
Space group	C 1 2 1	Depositor
Cell constants a, b, c, α , β , γ	88.16Å 82.22Å 93.58Å 90.00° 108.33° 90.00°	Depositor
Resolution (Å)	44.42 – 1.55 44.63 – 1.55	Depositor EDS
% Data completeness (in resolution range)	98.6 (44.42-1.55) 98.7 (44.63-1.55)	Depositor EDS
R_{merge}	(Not available)	Depositor
R_{sym}	(Not available)	Depositor
$\langle I/\sigma(I) \rangle$ ¹	0.98 (at 1.55Å)	Xtrriage
Refinement program	PHENIX 1.17.1_3660	Depositor
R, R_{free}	0.211 , 0.231 0.221 , 0.241	Depositor DCC
R_{free} test set	2100 reflections (2.31%)	wwPDB-VP
Wilson B-factor (Å ²)	36.4	Xtrriage
Anisotropy	0.363	Xtrriage
Bulk solvent k_{sol} (e/Å ³), B_{sol} (Å ²)	0.40 , 49.1	EDS
L-test for twinning ²	$\langle L \rangle = 0.50$, $\langle L^2 \rangle = 0.34$	Xtrriage
Estimated twinning fraction	No twinning to report.	Xtrriage
F_o, F_c correlation	0.96	EDS
Total number of atoms	9224	wwPDB-VP
Average B, all atoms (Å ²)	55.0	wwPDB-VP

Xtrriage's analysis on translational NCS is as follows: *The largest off-origin peak in the Patterson function is 5.50% of the height of the origin peak. No significant pseudotranslation is detected.*

¹Intensities estimated from amplitudes.

²Theoretical values of $\langle |L| \rangle$, $\langle L^2 \rangle$ for acentric reflections are 0.5, 0.333 respectively for untwinned datasets, and 0.375, 0.2 for perfectly twinned datasets.

5 Model quality i

5.1 Standard geometry i

Bond lengths and bond angles in the following residue types are not validated in this section: VO9

The Z score for a bond length (or angle) is the number of standard deviations the observed value is removed from the expected value. A bond length (or angle) with $|Z| > 5$ is considered an outlier worth inspection. RMSZ is the root-mean-square of all Z scores of the bond lengths (or angles).

Mol	Chain	Bond lengths		Bond angles	
		RMSZ	# $ Z > 5$	RMSZ	# $ Z > 5$
1	A	0.65	0/2138	0.85	9/2897 (0.3%)
2	B	0.52	0/2739	0.65	0/3699
All	All	0.58	0/4877	0.75	9/6596 (0.1%)

Chiral center outliers are detected by calculating the chiral volume of a chiral center and verifying if the center is modelled as a planar moiety or with the opposite hand. A planarity outlier is detected by checking planarity of atoms in a peptide group, atoms in a mainchain group or atoms of a sidechain that are expected to be planar.

Mol	Chain	#Chirality outliers	#Planarity outliers
1	A	0	8

There are no bond length outliers.

All (9) bond angle outliers are listed below:

Mol	Chain	Res	Type	Atoms	Z	Observed($^{\circ}$)	Ideal($^{\circ}$)
1	A	2067	TYR	CB-CA-C	9.49	129.38	110.40
1	A	2067	TYR	C-N-CA	7.82	141.24	121.70
1	A	1959	THR	CA-CB-OG1	-6.73	94.86	109.00
1	A	2013	ARG	NE-CZ-NH1	-5.88	117.36	120.30
1	A	2065	ARG	CG-CD-NE	5.83	124.04	111.80
1	A	1962	ARG	CG-CD-NE	5.82	124.01	111.80
1	A	1960[A]	GLU	C-N-CA	-5.70	107.45	121.70
1	A	1960[B]	GLU	C-N-CA	-5.70	107.45	121.70
1	A	1962	ARG	CB-CA-C	5.42	121.24	110.40

There are no chirality outliers.

All (8) planarity outliers are listed below:

Mol	Chain	Res	Type	Group
1	A	1959	THR	Mainchain
1	A	1960[A]	GLU	Mainchain
1	A	1960[B]	GLU	Mainchain
1	A	2016	LYS	Mainchain
1	A	2017[A]	THR	Mainchain
1	A	2017[B]	THR	Mainchain

5.2 Too-close contacts [i](#)

In the following table, the Non-H and H(model) columns list the number of non-hydrogen atoms and hydrogen atoms in the chain respectively. The H(added) column lists the number of hydrogen atoms added and optimized by MolProbity. The Clashes column lists the number of clashes within the asymmetric unit, whereas Symm-Clashes lists symmetry-related clashes.

Mol	Chain	Non-H	H(model)	H(added)	Clashes	Symm-Clashes
1	A	1997	2047	1961	11	7
2	B	2580	2464	2398	13	7
3	A	28	0	0	4	0
4	A	48	0	0	0	0
4	B	60	0	0	1	0
All	All	4713	4511	4359	28	7

The all-atom clashscore is defined as the number of clashes found per 1000 atoms (including hydrogen atoms). The all-atom clashscore for this structure is 3.

All (28) close contacts within the same asymmetric unit are listed below, sorted by their clash magnitude.

Atom-1	Atom-2	Interatomic distance (Å)	Clash overlap (Å)
2:B:50:ASP:OD1	2:B:51:ASN:N	2.20	0.74
1:A:1960[B]:GLU:HA	1:A:1960[B]:GLU:OE1	1.92	0.70
2:B:258:LYS:HD2	2:B:258:LYS:H	1.69	0.57
2:B:70:GLN:HB3	2:B:81:MET:HE1	1.87	0.56
3:A:2102:VO9:C8	3:A:2102:VO9:C1	2.85	0.55
3:A:2101:VO9:C6	3:A:2101:VO9:C9	2.85	0.55
3:A:2102:VO9:C1	3:A:2102:VO9:C9	2.85	0.54
2:B:287:ARG:O	2:B:291:ILE:HD13	2.09	0.53
1:A:2062:GLU:HA	1:A:2062:GLU:OE2	2.15	0.47
1:A:1962:ARG:O	1:A:1962:ARG:HG2	2.14	0.47
1:A:1895:HIS:O	1:A:1898[A]:VAL:HG22	2.15	0.46
2:B:280:SER:HB3	2:B:313:TYR:CE1	2.51	0.46
3:A:2101:VO9:S	3:A:2101:VO9:C5	3.04	0.46

Continued on next page...

Continued from previous page...

Atom-1	Atom-2	Interatomic distance (Å)	Clash overlap (Å)
1:A:2005:PHE:O	1:A:2009:THR:HG23	2.17	0.45
1:A:2057[A]:ASP:HA	1:A:2060:LEU:HD23	1.98	0.45
1:A:2057[B]:ASP:HA	1:A:2060:LEU:HD23	1.98	0.45
2:B:1:MET:HB3	2:B:35:ASP:HA	1.99	0.44
2:B:277:GLU:CD	2:B:277:GLU:H	2.23	0.42
2:B:40:HIS:HD2	4:B:429:HOH:O	2.01	0.42
2:B:190:ARG:HG3	2:B:203[B]:TYR:CE2	2.55	0.41
2:B:53:SER:O	2:B:54[A]:MET:HB3	2.20	0.41
1:A:1963:LEU:HD23	1:A:1963:LEU:HA	1.89	0.41
2:B:280:SER:CB	2:B:313:TYR:CE1	3.03	0.41
1:A:2047:GLN:O	1:A:2051:ILE:HG12	2.21	0.41
1:A:1843:LEU:HA	1:A:1849:LYS:HD2	2.03	0.40

All (7) symmetry-related close contacts are listed below. The label for Atom-2 includes the symmetry operator and encoded unit-cell translations to be applied.

Atom-1	Atom-2	Interatomic distance (Å)	Clash overlap (Å)
1:A:2065:ARG:HG3	2:B:52:SER:HB2[2_655]	0.65	0.95
1:A:2065:ARG:HG3	2:B:52:SER:CB[2_655]	1.13	0.47
1:A:2065:ARG:CG	2:B:52:SER:HB2[2_655]	1.19	0.41
1:A:2065:ARG:CG	2:B:52:SER:CB[2_655]	1.86	0.34
1:A:2065:ARG:HD3	2:B:52:SER:HB3[2_655]	1.29	0.31
1:A:2065:ARG:CD	2:B:52:SER:CB[2_655]	2.17	0.03
1:A:2065:ARG:CD	2:B:52:SER:HB3[2_655]	1.58	0.02

5.3 Torsion angles [i](#)

5.3.1 Protein backbone [i](#)

In the following table, the Percentiles column shows the percent Ramachandran outliers of the chain as a percentile score with respect to all X-ray entries followed by that with respect to entries of similar resolution.

The Analysed column shows the number of residues for which the backbone conformation was analysed, and the total number of residues.

Mol	Chain	Analysed	Favoured	Allowed	Outliers	Percentiles
1	A	257/258 (100%)	249 (97%)	8 (3%)	0	100 100
2	B	315/308 (102%)	307 (98%)	7 (2%)	1 (0%)	41 19

Continued on next page...

Continued from previous page...

Mol	Chain	Analysed	Favoured	Allowed	Outliers	Percentiles
All	All	572/566 (101%)	556 (97%)	15 (3%)	1 (0%)	47 23

All (1) Ramachandran outliers are listed below:

Mol	Chain	Res	Type
2	B	106	PRO

5.3.2 Protein sidechains [i](#)

In the following table, the Percentiles column shows the percent sidechain outliers of the chain as a percentile score with respect to all X-ray entries followed by that with respect to entries of similar resolution.

The Analysed column shows the number of residues for which the sidechain conformation was analysed, and the total number of residues.

Mol	Chain	Analysed	Rotameric	Outliers	Percentiles
1	A	236/233 (101%)	227 (96%)	9 (4%)	33 6
2	B	294/284 (104%)	293 (100%)	1 (0%)	92 85
All	All	530/517 (102%)	520 (98%)	10 (2%)	67 28

All (10) residues with a non-rotameric sidechain are listed below:

Mol	Chain	Res	Type
1	A	1903	LYS
1	A	1962	ARG
1	A	1979[A]	MET
1	A	1979[B]	MET
1	A	1979[C]	MET
1	A	2002[A]	TYR
1	A	2002[B]	TYR
1	A	2060	LEU
1	A	2065	ARG
2	B	258	LYS

Sometimes sidechains can be flipped to improve hydrogen bonding and reduce clashes. There are no such sidechains identified.

5.3.3 RNA [i](#)

There are no RNA molecules in this entry.

5.4 Non-standard residues in protein, DNA, RNA chains [i](#)

There are no non-standard protein/DNA/RNA residues in this entry.

5.5 Carbohydrates [i](#)

There are no monosaccharides in this entry.

5.6 Ligand geometry [i](#)

2 ligands are modelled in this entry.

In the following table, the Counts columns list the number of bonds (or angles) for which Mogul statistics could be retrieved, the number of bonds (or angles) that are observed in the model and the number of bonds (or angles) that are defined in the Chemical Component Dictionary. The Link column lists molecule types, if any, to which the group is linked. The Z score for a bond length (or angle) is the number of standard deviations the observed value is removed from the expected value. A bond length (or angle) with $|Z| > 2$ is considered an outlier worth inspection. RMSZ is the root-mean-square of all Z scores of the bond lengths (or angles).

Mol	Type	Chain	Res	Link	Bond lengths			Bond angles		
					Counts	RMSZ	# Z > 2	Counts	RMSZ	# Z > 2
3	VO9	A	2102	-	14,15,15	1.56	2 (14%)	11,20,20	2.77	4 (36%)
3	VO9	A	2101	-	14,15,15	2.39	4 (28%)	11,20,20	1.65	2 (18%)

In the following table, the Chirals column lists the number of chiral outliers, the number of chiral centers analysed, the number of these observed in the model and the number defined in the Chemical Component Dictionary. Similar counts are reported in the Torsion and Rings columns. '-' means no outliers of that kind were identified.

Mol	Type	Chain	Res	Link	Chirals	Torsions	Rings
3	VO9	A	2102	-	-	4/11/17/17	0/2/2/2
3	VO9	A	2101	-	-	6/11/17/17	0/2/2/2

All (6) bond length outliers are listed below:

Mol	Chain	Res	Type	Atoms	Z	Observed(Å)	Ideal(Å)
3	A	2101	VO9	C-C1	-5.42	1.22	1.39

Continued on next page...

Continued from previous page...

Mol	Chain	Res	Type	Atoms	Z	Observed(Å)	Ideal(Å)
3	A	2101	VO9	C2-S	-4.88	1.66	1.72
3	A	2101	VO9	C1-C2	-3.51	1.24	1.39
3	A	2102	VO9	O-C4	-3.22	1.16	1.22
3	A	2101	VO9	C3-S	-3.09	1.56	1.71
3	A	2102	VO9	C2-S	-2.52	1.69	1.72

All (6) bond angle outliers are listed below:

Mol	Chain	Res	Type	Atoms	Z	Observed(°)	Ideal(°)
3	A	2102	VO9	C2-C4-N	7.62	128.54	119.76
3	A	2101	VO9	C2-C4-N	3.95	124.31	119.76
3	A	2102	VO9	O-C4-N	-2.95	116.81	121.59
3	A	2102	VO9	C6-C5-N	-2.91	107.57	112.95
3	A	2101	VO9	C-C3-S	-2.49	110.96	112.98
3	A	2102	VO9	O-C4-C2	-2.27	114.65	119.05

There are no chirality outliers.

All (10) torsion outliers are listed below:

Mol	Chain	Res	Type	Atoms
3	A	2101	VO9	C8-C7-N-C4
3	A	2101	VO9	C9-C7-N-C5
3	A	2101	VO9	C9-C7-N-C4
3	A	2102	VO9	C8-C7-N-C5
3	A	2102	VO9	C8-C7-N-C4
3	A	2102	VO9	N-C5-C6-O1
3	A	2101	VO9	N-C5-C6-O1
3	A	2101	VO9	C6-C5-N-C7
3	A	2101	VO9	C8-C7-N-C5
3	A	2102	VO9	O-C4-N-C5

There are no ring outliers.

2 monomers are involved in 4 short contacts:

Mol	Chain	Res	Type	Clashes	Symm-Clashes
3	A	2102	VO9	2	0
3	A	2101	VO9	2	0

5.7 Other polymers [i](#)

There are no such residues in this entry.

5.8 Polymer linkage issues [i](#)

There are no chain breaks in this entry.

6 Fit of model and data [i](#)

6.1 Protein, DNA and RNA chains [i](#)

In the following table, the column labelled ‘#RSRZ > 2’ contains the number (and percentage) of RSRZ outliers, followed by percent RSRZ outliers for the chain as percentile scores relative to all X-ray entries and entries of similar resolution. The OWAB column contains the minimum, median, 95th percentile and maximum values of the occupancy-weighted average B-factor per residue. The column labelled ‘Q < 0.9’ lists the number of (and percentage) of residues with an average occupancy less than 0.9.

Mol	Chain	Analysed	<RSRZ>	#RSRZ>2	OWAB(Å ²)	Q<0.9
1	A	237/258 (91%)	0.64	19 (8%) 12 14	34, 44, 82, 127	0
2	B	300/308 (97%)	0.63	20 (6%) 17 21	32, 47, 83, 104	0
All	All	537/566 (94%)	0.64	39 (7%) 15 17	32, 46, 83, 127	0

All (39) RSRZ outliers are listed below:

Mol	Chain	Res	Type	RSRZ
1	A	2069	VAL	8.6
1	A	2068	ASN	8.2
1	A	2027	LEU	8.0
2	B	1	MET	8.0
2	B	53	SER	7.7
1	A	2060	LEU	7.1
1	A	2065	ARG	6.0
1	A	2063	TYR	5.8
2	B	172	PRO	5.6
2	B	173	ALA	5.6
1	A	1962	ARG	5.5
2	B	52	SER	5.3
2	B	279	TYR	5.3
1	A	1833	GLY	4.5
2	B	101	MET	4.0
1	A	2064	GLY	3.6
2	B	170	SER	3.6
1	A	2067	TYR	3.5
2	B	50	ASP	3.3
2	B	316	LEU	3.2
1	A	1837	SER	3.2
1	A	1836	ASN	3.1
1	A	2046	GLU	3.0
2	B	131	ARG	3.0

Continued on next page...

Continued from previous page...

Mol	Chain	Res	Type	RSRZ
2	B	174	HIS	2.8
1	A	1866	PHE	2.7
2	B	62	CYS	2.7
1	A	2066	LYS	2.6
2	B	146	THR	2.6
2	B	203[A]	TYR	2.6
2	B	150	ASN	2.5
2	B	38	ILE	2.4
2	B	54[A]	MET	2.3
2	B	151	GLU	2.2
1	A	1838	SER	2.1
1	A	2028	SER	2.1
1	A	1961[A]	LEU	2.1
1	A	2049	ILE	2.1
2	B	275	LEU	2.0

6.2 Non-standard residues in protein, DNA, RNA chains [i](#)

There are no non-standard protein/DNA/RNA residues in this entry.

6.3 Carbohydrates [i](#)

There are no monosaccharides in this entry.

6.4 Ligands [i](#)

In the following table, the Atoms column lists the number of modelled atoms in the group and the number defined in the chemical component dictionary. The B-factors column lists the minimum, median, 95th percentile and maximum values of B factors of atoms in the group. The column labelled 'Q< 0.9' lists the number of atoms with occupancy less than 0.9.

Mol	Type	Chain	Res	Atoms	RSCC	RSR	B-factors(\AA^2)	Q<0.9
3	VO9	A	2102	14/14	0.61	0.37	20,20,20,20	14
3	VO9	A	2101	14/14	0.68	0.32	20,20,20,20	14

6.5 Other polymers [i](#)

There are no such residues in this entry.