



Full wwPDB X-ray Structure Validation Report ⓘ

Mar 8, 2018 – 05:28 pm GMT

PDB ID : 3FO3
Title : Structure of the Thioalkalivibrio nitratireducens cytochrome c nitrite reductase reduced by sodium dithionite (sulfite complex)
Authors : Trofimov, A.A.; Polyakov, K.M.; Boyko, K.M.; Slutsky, A.; Tikhonova, T.V.; Antipov, A.N.; Zvyagilskaya, R.A.; Popov, A.N.; Lamzin, V.S.; Bourenkov, G.P.; Popov, V.O.
Deposited on : 2008-12-27
Resolution : 1.40 Å(reported)

This is a Full wwPDB X-ray Structure Validation Report for a publicly released PDB entry.

We welcome your comments at validation@mail.wwpdb.org

A user guide is available at

<https://www.wwpdb.org/validation/2017/XrayValidationReportHelp>

with specific help available everywhere you see the ⓘ symbol.

The following versions of software and data (see [references ⓘ](#)) were used in the production of this report:

MolProbity : 4.02b-467
Mogul : 1.7.3 (157068), CSD as539be (2018)
Xtriage (Phenix) : 1.13
EDS : trunk30967
Percentile statistics : 20171227.v01 (using entries in the PDB archive December 27th 2017)
Refmac : 5.8.0158
CCP4 : 7.0 (Gargrove)
Ideal geometry (proteins) : Engh & Huber (2001)
Ideal geometry (DNA, RNA) : Parkinson et al. (1996)
Validation Pipeline (wwPDB-VP) : trunk30967

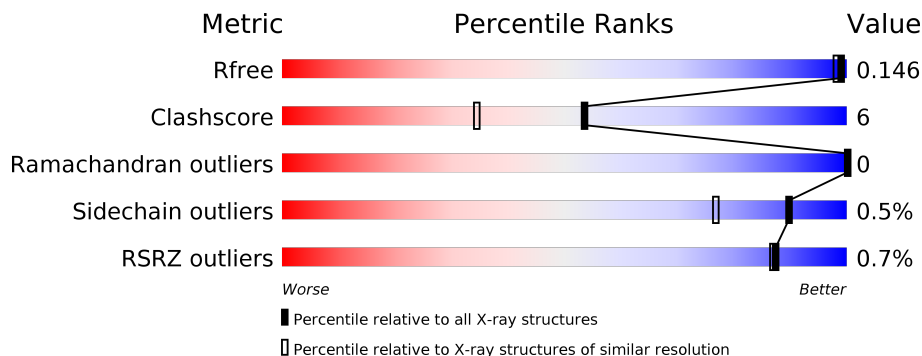
1 Overall quality at a glance

The following experimental techniques were used to determine the structure:

X-RAY DIFFRACTION

The reported resolution of this entry is 1.40 Å.

Percentile scores (ranging between 0-100) for global validation metrics of the entry are shown in the following graphic. The table shows the number of entries on which the scores are based.



Metric	Whole archive (#Entries)	Similar resolution (#Entries, resolution range(Å))
R_{free}	111664	1450 (1.40-1.40)
Clashscore	122126	1541 (1.40-1.40)
Ramachandran outliers	120053	1500 (1.40-1.40)
Sidechain outliers	120020	1499 (1.40-1.40)
RSRZ outliers	108989	1412 (1.40-1.40)

The table below summarises the geometric issues observed across the polymeric chains and their fit to the electron density. The red, orange, yellow and green segments on the lower bar indicate the fraction of residues that contain outliers for ≥ 3 , 2, 1 and 0 types of geometric quality criteria. A grey segment represents the fraction of residues that are not modelled. The numeric value for each fraction is indicated below the corresponding segment, with a dot representing fractions $\leq 5\%$. The upper red bar (where present) indicates the fraction of residues that have poor fit to the electron density. The numeric value is given above the bar.

Mol	Chain	Length	Quality of chain
1	A	525	 95%
1	B	525	 93% 5%

The following table lists non-polymeric compounds, carbohydrate monomers and non-standard residues in protein, DNA, RNA chains that are outliers for geometric or electron-density-fit criteria:

Mol	Type	Chain	Res	Chirality	Geometry	Clashes	Electron density
10	PG4	B	547	-	-	X	-

2 Entry composition [i](#)

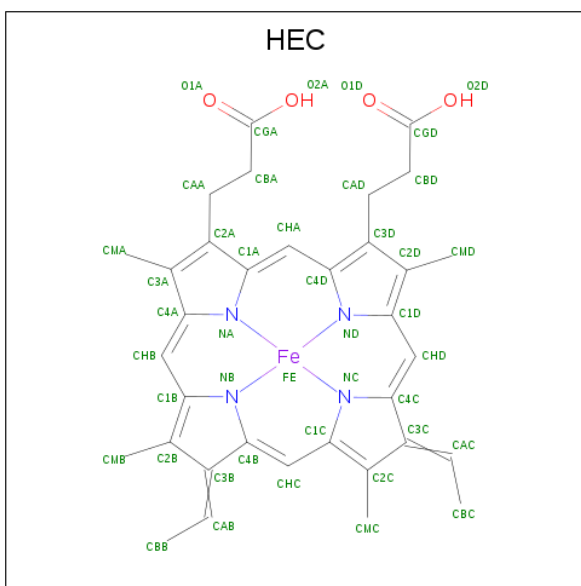
There are 12 unique types of molecules in this entry. The entry contains 16308 atoms, of which 5637 are hydrogens and 0 are deuteriums.

In the tables below, the ZeroOcc column contains the number of atoms modelled with zero occupancy, the AltConf column contains the number of residues with at least one atom in alternate conformation and the Trace column contains the number of residues modelled with at most 2 atoms.

- Molecule 1 is a protein called Eight-heme nitrite reductase.

Mol	Chain	Residues	Atoms					ZeroOcc	AltConf	Trace	
			Total	C	H	N	O				S
1	A	519	Total 6892	C 2580	H 2734	N 754	O 786	S 38	0	19	1
1	B	519	Total 6913	C 2591	H 2727	N 762	O 796	S 37	0	21	1

- Molecule 2 is HEME C (three-letter code: HEC) (formula: $C_{34}H_{34}FeN_4O_4$).



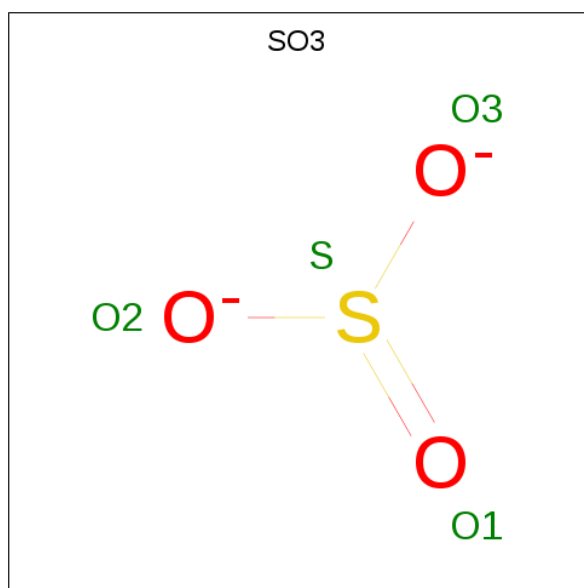
Mol	Chain	Residues	Atoms					ZeroOcc	AltConf	
			Total	C	Fe	H	N			O
2	A	1	Total 55	C 34	Fe 1	H 12	N 4	O 4	0	0
2	A	1	Total 55	C 34	Fe 1	H 12	N 4	O 4	0	0
2	A	1	Total 55	C 34	Fe 1	H 12	N 4	O 4	0	0
2	A	1	Total 55	C 36	Fe 1	H 8	N 4	O 6	0	1

Continued on next page...

Continued from previous page...

Mol	Chain	Residues	Atoms					ZeroOcc	AltConf	
2	A	1	Total	C	Fe	H	N	O	0	0
			55	34	1	12	4	4		
2	A	1	Total	C	Fe	H	N	O	0	0
			55	34	1	12	4	4		
2	A	1	Total	C	Fe	H	N	O	0	1
			55	36	1	8	4	6		
2	A	1	Total	C	Fe	H	N	O	0	0
			55	34	1	12	4	4		
2	B	1	Total	C	Fe	H	N	O	0	0
			55	34	1	12	4	4		
2	B	1	Total	C	Fe	H	N	O	0	0
			55	34	1	12	4	4		
2	B	1	Total	C	Fe	H	N	O	0	0
			55	34	1	12	4	4		
2	B	1	Total	C	Fe	H	N	O	0	1
			55	36	1	8	4	6		
2	B	1	Total	C	Fe	H	N	O	0	0
			55	34	1	12	4	4		
2	B	1	Total	C	Fe	H	N	O	0	0
			55	34	1	12	4	4		
2	B	1	Total	C	Fe	H	N	O	0	1
			55	36	1	8	4	6		
2	B	1	Total	C	Fe	H	N	O	0	0
			55	34	1	12	4	4		

- Molecule 3 is SULFITE ION (three-letter code: SO3) (formula: O₃S).

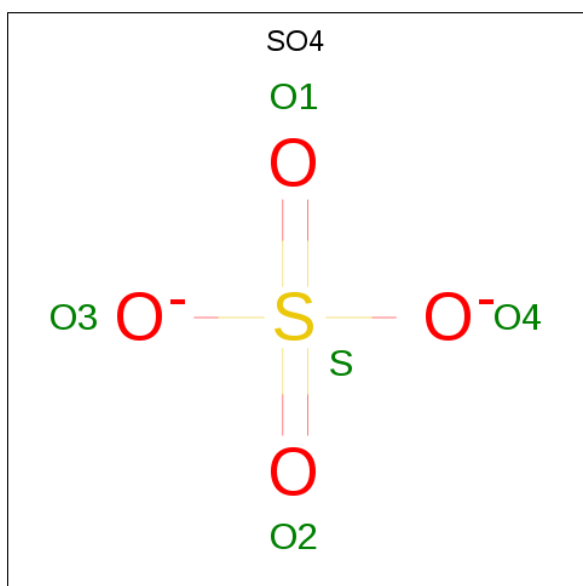


Mol	Chain	Residues	Atoms	ZeroOcc	AltConf
3	A	1	Total O S 4 3 1	0	0
3	B	1	Total O S 4 3 1	0	0
3	B	1	Total O S 6 4 2	0	1

- Molecule 4 is CALCIUM ION (three-letter code: CA) (formula: Ca).

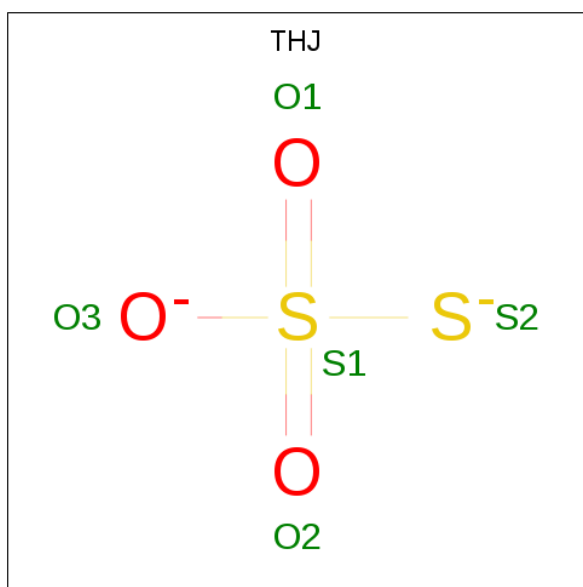
Mol	Chain	Residues	Atoms	ZeroOcc	AltConf
4	B	2	Total Ca 2 2	0	0
4	A	2	Total Ca 2 2	0	0

- Molecule 5 is SULFATE ION (three-letter code: SO4) (formula: O₄S).



Mol	Chain	Residues	Atoms	ZeroOcc	AltConf
5	A	1	Total O S 5 4 1	0	0
5	B	1	Total O S 5 4 1	0	0

- Molecule 6 is THIOSULFATE (three-letter code: THJ) (formula: O₃S₂).

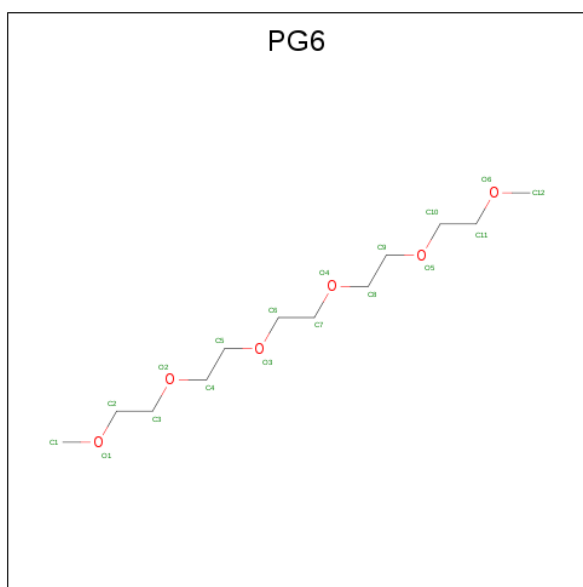


Mol	Chain	Residues	Atoms			ZeroOcc	AltConf
6	A	1	Total	O	S	0	0
			5	3	2		
6	B	1	Total	O	S	0	0
			5	3	2		

- Molecule 7 is SODIUM ION (three-letter code: NA) (formula: Na).

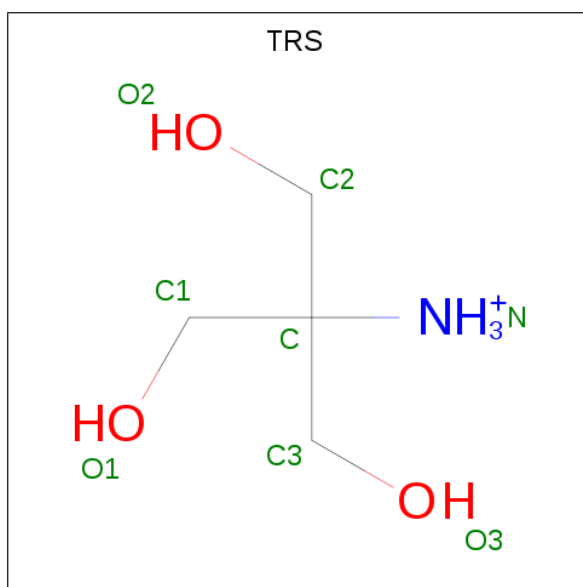
Mol	Chain	Residues	Atoms		ZeroOcc	AltConf
7	B	3	Total	Na	0	0
			3	3		
7	A	2	Total	Na	0	0
			2	2		

- Molecule 8 is 1-(2-METHOXY-ETHOXY)-2-{2-[2-(2-METHOXY-ETHOXY)-ETHOXY]-ETHANE (three-letter code: PG6) (formula: C₁₂H₂₆O₆).



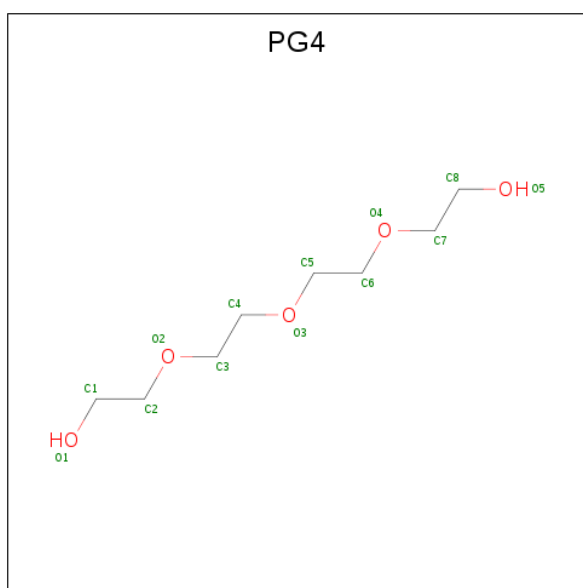
Mol	Chain	Residues	Atoms			ZeroOcc	AltConf
8	A	1	Total	C	O	0	0
			17	11	6		
8	A	1	Total	C	O	0	0
			8	5	3		
8	A	1	Total	C	O	0	0
			9	6	3		
8	A	1	Total	C	O	0	0
			5	3	2		
8	A	1	Total	C	O	0	0
			10	6	4		
8	B	1	Total	C	O	0	0
			17	11	6		
8	B	1	Total	C	O	0	0
			8	5	3		
8	B	1	Total	C	O	0	0
			5	3	2		

- Molecule 9 is 2-AMINO-2-HYDROXYMETHYL-PROPANE-1,3-DIOL (three-letter code: TRS) (formula: C₄H₁₂NO₃).



Mol	Chain	Residues	Atoms			ZeroOcc	AltConf	
9	A	1	Total	C	N	O	0	0
			8	4	1	3		
9	B	1	Total	C	N	O	0	0
			8	4	1	3		

- Molecule 10 is TETRAETHYLENE GLYCOL (three-letter code: PG4) (formula: C₈H₁₈O₅).



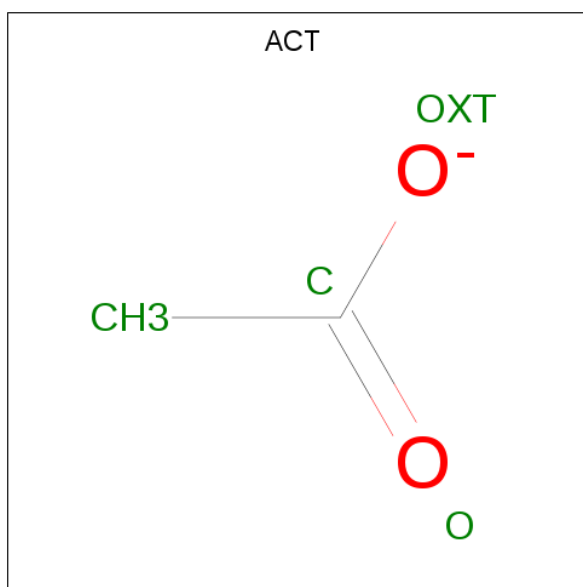
Mol	Chain	Residues	Atoms			ZeroOcc	AltConf
10	A	1	Total	C	O	0	0
			5	3	2		
10	A	1	Total	C	O	0	0
			4	2	2		

Continued on next page...

Continued from previous page...

Mol	Chain	Residues	Atoms			ZeroOcc	AltConf
10	A	1	Total	C	O	0	1
			10	6	4		
10	A	1	Total	C	O	0	0
			6	4	2		
10	A	1	Total	C	O	0	0
			6	4	2		
10	A	1	Total	C	O	0	0
			6	4	2		
10	B	1	Total	C	O	0	0
			8	5	3		
10	B	1	Total	C	O	0	0
			10	6	4		
10	B	1	Total	C	O	0	0
			7	4	3		
10	B	1	Total	C	O	0	0
			5	3	2		
10	B	1	Total	C	O	0	0
			4	2	2		
10	B	1	Total	C	O	0	0
			5	3	2		
10	B	1	Total	C	O	0	0
			4	2	2		
10	B	1	Total	C	O	0	0
			5	3	2		
10	B	1	Total	C	O	0	0
			4	2	2		
10	B	1	Total	C	O	0	0
			7	4	3		

- Molecule 11 is ACETATE ION (three-letter code: ACT) (formula: C₂H₃O₂).



Mol	Chain	Residues	Atoms	ZeroOcc	AltConf
11	B	1	Total C O 4 2 2	0	0

- Molecule 12 is water.

Mol	Chain	Residues	Atoms	ZeroOcc	AltConf
12	A	701	Total O 701 701	0	0
12	B	684	Total O 684 684	0	0

3 Residue-property plots [i](#)

These plots are drawn for all protein, RNA and DNA chains in the entry. The first graphic for a chain summarises the proportions of the various outlier classes displayed in the second graphic. The second graphic shows the sequence view annotated by issues in geometry and electron density. Residues are color-coded according to the number of geometric quality criteria for which they contain at least one outlier: green = 0, yellow = 1, orange = 2 and red = 3 or more. A red dot above a residue indicates a poor fit to the electron density ($RSRZ > 2$). Stretches of 2 or more consecutive residues without any outlier are shown as a green connector. Residues present in the sample, but not in the model, are shown in grey.

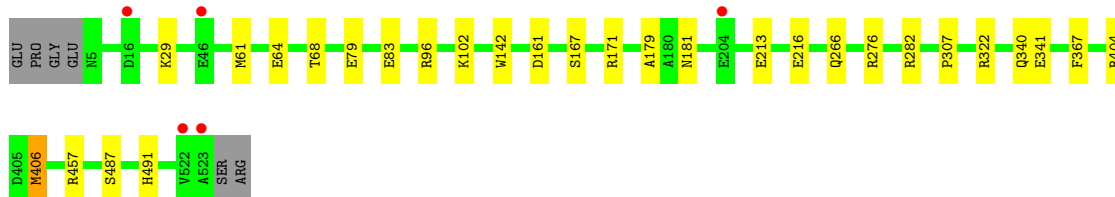
- Molecule 1: Eight-heme nitrite reductase

Chain A:  95%



- Molecule 1: Eight-heme nitrite reductase

Chain B:  93% 5%



4 Data and refinement statistics

Property	Value	Source
Space group	P 21 3	Depositor
Cell constants a, b, c, α , β , γ	193.79Å 193.79Å 193.79Å 90.00° 90.00° 90.00°	Depositor
Resolution (Å)	12.00 – 1.40 12.00 – 1.40	Depositor EDS
% Data completeness (in resolution range)	99.4 (12.00-1.40) 99.6 (12.00-1.40)	Depositor EDS
R_{merge}	0.06	Depositor
R_{sym}	(Not available)	Depositor
$\langle I/\sigma(I) \rangle$ ¹	3.19 (at 1.40Å)	Xtrriage
Refinement program	REFMAC 5.2.0019	Depositor
R, R_{free}	0.126 , 0.139 0.135 , 0.146	Depositor DCC
R_{free} test set	23479 reflections (5.02%)	wwPDB-VP
Wilson B-factor (Å ²)	13.9	Xtrriage
Anisotropy	0.000	Xtrriage
Bulk solvent k_{sol} (e/Å ³), B_{sol} (Å ²)	0.45 , 57.1	EDS
L-test for twinning ²	$\langle L \rangle = 0.51$, $\langle L^2 \rangle = 0.34$	Xtrriage
Estimated twinning fraction	0.024 for l,-k,h	Xtrriage
F_o, F_c correlation	0.98	EDS
Total number of atoms	16308	wwPDB-VP
Average B, all atoms (Å ²)	17.0	wwPDB-VP

Xtrriage's analysis on translational NCS is as follows: *The largest off-origin peak in the Patterson function is 2.01% of the height of the origin peak. No significant pseudotranslation is detected.*

¹Intensities estimated from amplitudes.

²Theoretical values of $\langle |L| \rangle$, $\langle L^2 \rangle$ for acentric reflections are 0.5, 0.333 respectively for untwinned datasets, and 0.375, 0.2 for perfectly twinned datasets.

5 Model quality [i](#)

5.1 Standard geometry [i](#)

Bond lengths and bond angles in the following residue types are not validated in this section: NA, CA, HEC, SO3, PG6, PG4, SO4, ACT, TRS, THJ

The Z score for a bond length (or angle) is the number of standard deviations the observed value is removed from the expected value. A bond length (or angle) with $|Z| > 5$ is considered an outlier worth inspection. RMSZ is the root-mean-square of all Z scores of the bond lengths (or angles).

Mol	Chain	Bond lengths		Bond angles	
		RMSZ	# Z >5	RMSZ	# Z >5
1	A	0.60	1/4368 (0.0%)	0.76	3/5922 (0.1%)
1	B	0.62	2/4404 (0.0%)	0.78	8/5968 (0.1%)
All	All	0.61	3/8772 (0.0%)	0.77	11/11890 (0.1%)

All (3) bond length outliers are listed below:

Mol	Chain	Res	Type	Atoms	Z	Observed(Å)	Ideal(Å)
1	B	83	GLU	CD-OE1	5.98	1.32	1.25
1	A	83	GLU	CD-OE1	5.97	1.32	1.25
1	B	83	GLU	CG-CD	5.07	1.59	1.51

All (11) bond angle outliers are listed below:

Mol	Chain	Res	Type	Atoms	Z	Observed(°)	Ideal(°)
1	B	61[A]	MET	CA-CB-CG	-6.76	101.80	113.30
1	B	61[B]	MET	CA-CB-CG	-6.76	101.80	113.30
1	B	61[C]	MET	CA-CB-CG	-6.76	101.80	113.30
1	B	404	ARG	NE-CZ-NH2	-6.63	116.98	120.30
1	B	282	ARG	NE-CZ-NH1	6.27	123.44	120.30
1	B	457	ARG	NE-CZ-NH1	6.07	123.34	120.30
1	A	161	ASP	CB-CG-OD1	5.24	123.02	118.30
1	B	404	ARG	NE-CZ-NH1	5.20	122.90	120.30
1	A	348	ARG	NE-CZ-NH1	5.08	122.84	120.30
1	B	161	ASP	CB-CG-OD1	5.05	122.85	118.30
1	A	243	ASP	CB-CG-OD1	5.04	122.84	118.30

There are no chirality outliers.

There are no planarity outliers.

5.2 Too-close contacts [i](#)

In the following table, the Non-H and H(model) columns list the number of non-hydrogen atoms and hydrogen atoms in the chain respectively. The H(added) column lists the number of hydrogen atoms added and optimized by MolProbity. The Clashes column lists the number of clashes within the asymmetric unit, whereas Symm-Clashes lists symmetry related clashes.

Mol	Chain	Non-H	H(model)	H(added)	Clashes	Symm-Clashes
1	A	4158	2734	3865	15	0
1	B	4186	2727	3886	39	0
2	A	352	88	196	11	0
2	B	352	88	196	7	0
3	A	4	0	0	0	0
3	B	10	0	0	0	0
4	A	2	0	0	0	0
4	B	2	0	0	0	0
5	A	5	0	0	0	0
5	B	5	0	0	0	0
6	A	5	0	0	1	0
6	B	5	0	0	0	0
7	A	2	0	0	0	0
7	B	3	0	0	0	0
8	A	49	0	61	13	0
8	B	30	0	38	3	0
9	A	8	0	12	1	0
9	B	8	0	12	3	0
10	A	37	0	43	3	0
10	B	59	0	69	22	0
11	B	4	0	3	0	0
12	A	701	0	0	25	0
12	B	684	0	0	32	0
All	All	10671	5637	8381	100	0

The all-atom clashscore is defined as the number of clashes found per 1000 atoms (including hydrogen atoms). The all-atom clashscore for this structure is 6.

All (100) close contacts within the same asymmetric unit are listed below, sorted by their clash magnitude.

Atom-1	Atom-2	Interatomic distance (Å)	Clash overlap (Å)
10:A:535:PG4:C3	12:A:624:HOH:O	1.69	1.29
10:B:540:PG4:C2	12:B:745:HOH:O	1.74	1.28
8:A:532:PG6:H121	12:A:990:HOH:O	0.94	1.11
10:B:547:PG4:H11	12:B:808:HOH:O	0.92	1.08

Continued on next page...

Continued from previous page...

Atom-1	Atom-2	Interatomic distance (Å)	Clash overlap (Å)
8:B:532:PG6:H121	12:B:996:HOH:O	0.88	1.05
10:B:540:PG4:O2	12:B:745:HOH:O	1.63	1.04
1:B:181:ASN:HD22	10:B:547:PG4:H21	1.17	1.02
1:B:307:PRO:CD	10:B:547:PG4:H22	1.94	0.97
1:B:340[A]:GLN:OE1	12:B:721:HOH:O	1.80	0.97
1:B:307:PRO:HD2	10:B:547:PG4:H22	1.48	0.95
8:A:542:PG6:C2	12:A:597:HOH:O	2.15	0.94
1:B:181:ASN:ND2	10:B:547:PG4:H21	1.87	0.89
1:A:68[B]:THR:HG23	12:A:996:HOH:O	1.72	0.87
1:A:68[B]:THR:HB	12:A:576:HOH:O	1.76	0.86
1:A:406[B]:MET:SD	12:A:1147:HOH:O	2.34	0.85
8:A:532:PG6:O1	12:A:968:HOH:O	1.94	0.84
8:A:542:PG6:H12	12:A:597:HOH:O	1.77	0.84
8:A:536:PG6:C4	12:A:668:HOH:O	2.25	0.84
1:B:406[B]:MET:SD	12:B:1153:HOH:O	2.37	0.81
8:A:536:PG6:H41	12:A:668:HOH:O	1.81	0.81
1:B:68[B]:THR:HB	12:B:576:HOH:O	1.80	0.81
1:B:68[B]:THR:HG23	12:B:1011:HOH:O	1.80	0.79
2:A:1002:HEC:HMC1	2:A:1002:HEC:HBC3	1.66	0.77
8:A:542:PG6:H22	12:A:597:HOH:O	1.82	0.76
1:B:322[B]:ARG:NH1	12:B:774:HOH:O	2.10	0.75
1:B:322[B]:ARG:HG2	12:B:774:HOH:O	1.87	0.74
1:A:68[B]:THR:CB	12:A:576:HOH:O	2.34	0.73
2:B:1002:HEC:HBC3	2:B:1002:HEC:HMC1	1.71	0.72
1:B:213[B]:GLU:OE1	1:B:216[B]:GLU:CD	2.28	0.72
10:B:540:PG4:H21	12:B:745:HOH:O	1.59	0.71
1:B:68[B]:THR:CB	12:B:576:HOH:O	2.38	0.70
1:B:307:PRO:HD3	10:B:547:PG4:H22	1.71	0.70
1:B:276:ARG:HD2	10:B:539:PG4:H11	1.74	0.70
10:B:536:PG4:O1	12:B:563:HOH:O	0.69	0.68
8:B:532:PG6:O1	12:B:974:HOH:O	2.11	0.68
8:A:543:PG6:H21	12:A:1156:HOH:O	1.94	0.65
1:B:171:ARG:NH2	10:B:541:PG4:O1	2.29	0.64
8:A:542:PG6:H21	12:A:597:HOH:O	1.91	0.61
1:B:79[B]:GLU:OE2	12:B:1217:HOH:O	2.16	0.59
1:B:181:ASN:HD22	10:B:547:PG4:C2	2.04	0.58
2:B:1004:HEC:HBB3	2:B:1004:HEC:HMB1	1.86	0.58
1:B:167:SER:HB2	1:B:216[A]:GLU:HG2	1.87	0.57
1:B:322[B]:ARG:CG	12:B:774:HOH:O	2.50	0.57
2:A:1001:HEC:HMB1	2:A:1001:HEC:HBB3	1.86	0.56
1:A:174:SER:HA	10:A:539:PG4:H22	1.87	0.56

Continued on next page...

Continued from previous page...

Atom-1	Atom-2	Interatomic distance (Å)	Clash overlap (Å)
1:B:167:SER:HB2	1:B:216[B]:GLU:HG3	1.88	0.55
1:A:167:SER:HB2	1:A:216:GLU:HG2	1.88	0.55
2:B:1001:HEC:HBB3	2:B:1001:HEC:HMB1	1.88	0.55
2:A:1004:HEC:HBB3	2:A:1004:HEC:HMB1	1.88	0.55
10:B:539:PG4:C3	12:B:1132:HOH:O	2.54	0.54
1:B:266:GLN:OE1	12:B:1130:HOH:O	2.18	0.54
1:B:213[B]:GLU:OE1	1:B:216[B]:GLU:OE2	2.26	0.54
1:B:142:TRP:CD2	10:B:536:PG4:H21	2.43	0.54
1:A:351:THR:HG23	8:A:543:PG6:H32	1.91	0.53
2:B:1006:HEC:HMA3	2:B:1007[B]:HEC:HBA2	1.90	0.53
2:A:1001:HEC:HBC3	2:A:1001:HEC:HMC1	1.91	0.52
1:B:213[B]:GLU:OE1	1:B:216[B]:GLU:OE1	2.27	0.52
1:B:340[B]:GLN:HG3	12:B:1197:HOH:O	2.08	0.52
10:B:538:PG4:C4	12:B:703:HOH:O	0.82	0.52
1:B:142:TRP:CE2	10:B:536:PG4:H21	2.45	0.52
8:A:532:PG6:C2	12:A:968:HOH:O	2.56	0.52
2:A:1003[B]:HEC:HBA2	12:A:1041:HOH:O	2.09	0.51
2:B:1008:HEC:HBC3	2:B:1008:HEC:HMC1	1.92	0.51
2:A:1008:HEC:HMC1	2:A:1008:HEC:HBC3	1.93	0.51
1:B:68[A]:THR:HG21	12:B:815:HOH:O	2.10	0.50
9:B:533:TRS:H11	12:B:590:HOH:O	2.12	0.49
1:B:307:PRO:HG2	10:B:537:PG4:H32	1.95	0.48
1:A:68[A]:THR:HG21	12:A:809:HOH:O	2.13	0.48
1:B:96[B]:ARG:NH1	12:B:1211:HOH:O	0.72	0.48
1:B:64:GLU:O	1:B:68[A]:THR:HG23	2.14	0.47
1:B:102[B]:LYS:NZ	12:B:1173:HOH:O	2.48	0.47
1:A:266:GLN:OE1	12:A:1124:HOH:O	2.20	0.47
2:A:1006:HEC:HMA3	2:A:1007[B]:HEC:HBA2	1.96	0.46
8:A:542:PG6:C1	12:A:597:HOH:O	2.42	0.46
9:B:533:TRS:H22	12:B:659:HOH:O	2.15	0.46
10:B:538:PG4:H41	12:B:703:HOH:O	0.84	0.46
2:A:1008:HEC:HMB1	2:A:1008:HEC:HBB3	1.98	0.46
2:A:1003[B]:HEC:CBA	12:A:1041:HOH:O	2.64	0.46
10:B:547:PG4:C1	12:B:808:HOH:O	1.83	0.45
1:B:68[B]:THR:HA	12:B:576:HOH:O	2.17	0.45
10:A:538[A]:PG4:H31	12:A:1217:HOH:O	2.16	0.45
1:B:29:LYS:HD2	2:B:1003[B]:HEC:HBA2	1.98	0.45
9:B:533:TRS:C1	12:B:590:HOH:O	2.63	0.44
1:B:487:SER:HB3	1:B:491:HIS:CE1	2.52	0.44
1:B:341:GLU:OE2	12:B:782:HOH:O	2.21	0.44
1:B:179:ALA:O	10:B:547:PG4:C1	2.66	0.43

Continued on next page...

Continued from previous page...

Atom-1	Atom-2	Interatomic distance (Å)	Clash overlap (Å)
9:A:533:TRS:H22	12:A:554:HOH:O	2.18	0.43
1:A:457:ARG:NH2	6:A:530:THJ:S2	2.85	0.43
1:A:68[B]:THR:CG2	12:A:576:HOH:O	2.64	0.42
8:A:536:PG6:H32	12:A:1115:HOH:O	2.18	0.42
1:A:68[B]:THR:HG22	12:A:576:HOH:O	2.19	0.42
1:A:487:SER:HB3	1:A:491:HIS:CE1	2.55	0.42
2:B:1008:HEC:HMB1	2:B:1008:HEC:HBB3	2.03	0.41
1:A:34:ASN:HB2	8:B:535:PG6:H71	2.02	0.41
1:A:129:VAL:HG11	2:A:1004:HEC:HMA1	2.02	0.41
1:B:179:ALA:O	10:B:547:PG4:H12	2.21	0.40
1:B:68[B]:THR:CA	12:B:576:HOH:O	2.68	0.40

There are no symmetry-related clashes.

5.3 Torsion angles [i](#)

5.3.1 Protein backbone [i](#)

In the following table, the Percentiles column shows the percent Ramachandran outliers of the chain as a percentile score with respect to all X-ray entries followed by that with respect to entries of similar resolution.

The Analysed column shows the number of residues for which the backbone conformation was analysed, and the total number of residues.

Mol	Chain	Analysed	Favoured	Allowed	Outliers	Percentiles	
1	A	537/525 (102%)	515 (96%)	22 (4%)	0	100	100
1	B	539/525 (103%)	517 (96%)	22 (4%)	0	100	100
All	All	1076/1050 (102%)	1032 (96%)	44 (4%)	0	100	100

There are no Ramachandran outliers to report.

5.3.2 Protein sidechains [i](#)

In the following table, the Percentiles column shows the percent sidechain outliers of the chain as a percentile score with respect to all X-ray entries followed by that with respect to entries of similar resolution.

The Analysed column shows the number of residues for which the sidechain conformation was analysed, and the total number of residues.

Mol	Chain	Analysed	Rotameric	Outliers	Percentiles	
1	A	453/443 (102%)	447 (99%)	6 (1%)	71	45
1	B	458/443 (103%)	456 (100%)	2 (0%)	92	80
All	All	911/886 (103%)	903 (99%)	8 (1%)	90	60

All (8) residues with a non-rotameric sidechain are listed below:

Mol	Chain	Res	Type
1	A	61[A]	MET
1	A	61[B]	MET
1	A	61[C]	MET
1	A	278	ARG
1	A	406[A]	MET
1	A	406[B]	MET
1	B	406[A]	MET
1	B	406[B]	MET

Some sidechains can be flipped to improve hydrogen bonding and reduce clashes. All (4) such sidechains are listed below:

Mol	Chain	Res	Type
1	A	388	GLN
1	A	409	GLN
1	B	20	GLN
1	B	388	GLN

5.3.3 RNA [i](#)

There are no RNA molecules in this entry.

5.4 Non-standard residues in protein, DNA, RNA chains [i](#)

There are no non-standard protein/DNA/RNA residues in this entry.

5.5 Carbohydrates [i](#)

There are no carbohydrates in this entry.

5.6 Ligand geometry [i](#)

Of 65 ligands modelled in this entry, 9 are monoatomic - leaving 56 for Mogul analysis.

In the following table, the Counts columns list the number of bonds (or angles) for which Mogul statistics could be retrieved, the number of bonds (or angles) that are observed in the model and the number of bonds (or angles) that are defined in the Chemical Component Dictionary. The Link column lists molecule types, if any, to which the group is linked. The Z score for a bond length (or angle) is the number of standard deviations the observed value is removed from the expected value. A bond length (or angle) with $|Z| > 2$ is considered an outlier worth inspection. RMSZ is the root-mean-square of all Z scores of the bond lengths (or angles).

Mol	Type	Chain	Res	Link	Bond lengths			Bond angles		
					Counts	RMSZ	# Z > 2	Counts	RMSZ	# Z > 2
2	HEC	A	1001	1	26,50,50	2.06	3 (11%)	18,82,82	1.61	4 (22%)
2	HEC	A	1002	1	26,50,50	1.97	6 (23%)	18,82,82	1.73	5 (27%)
2	HEC	A	1003[A]	-	26,50,50	2.06	5 (19%)	18,82,82	1.83	5 (27%)
2	HEC	A	1003[B]	-	26,50,50	2.06	5 (19%)	18,82,82	2.11	5 (27%)
2	HEC	A	1004	1,3	26,50,50	1.92	5 (19%)	18,82,82	1.75	4 (22%)
2	HEC	A	1005	1	26,50,50	1.95	4 (15%)	18,82,82	2.00	5 (27%)
2	HEC	A	1006	1,4	26,50,50	1.97	5 (19%)	18,82,82	1.91	6 (33%)
2	HEC	A	1007[A]	-	26,50,50	2.01	3 (11%)	18,82,82	1.98	6 (33%)
2	HEC	A	1007[B]	4	26,50,50	2.01	3 (11%)	18,82,82	2.00	6 (33%)
2	HEC	A	1008	1	26,50,50	2.22	4 (15%)	18,82,82	1.93	5 (27%)
3	SO3	A	526	2	1,3,3	1.96	0	0,3,3	0.00	-
5	SO4	A	529	-	4,4,4	0.45	0	6,6,6	0.80	0
6	THJ	A	530	-	3,4,4	0.75	0	2,6,6	0.08	0
8	PG6	A	532	-	16,16,17	0.50	0	15,15,16	0.34	0
9	TRS	A	533	-	7,7,7	0.43	0	9,9,9	1.12	1 (11%)
8	PG6	A	534	-	7,7,17	0.53	0	6,6,16	0.24	0
10	PG4	A	535	-	4,4,12	0.34	0	2,3,11	0.72	0
8	PG6	A	536	-	8,8,17	0.49	0	7,7,16	0.19	0
10	PG4	A	537	-	3,3,12	0.41	0	2,2,11	0.38	0
10	PG4	A	538[A]	-	4,4,12	0.39	0	2,3,11	0.45	0
10	PG4	A	538[B]	-	7,7,12	0.45	0	6,6,11	0.43	0
10	PG4	A	539	-	5,5,12	0.45	0	4,4,11	0.51	0
10	PG4	A	540	-	5,5,12	0.46	0	4,4,11	0.26	0
10	PG4	A	541	-	5,5,12	0.52	0	4,4,11	0.39	0
8	PG6	A	542	-	4,4,17	0.39	0	2,3,16	0.44	0
8	PG6	A	543	-	9,9,17	0.51	0	8,8,16	0.43	0
2	HEC	B	1001	1	26,50,50	2.09	5 (19%)	18,82,82	1.88	5 (27%)
2	HEC	B	1002	1	26,50,50	1.89	3 (11%)	18,82,82	1.88	5 (27%)
2	HEC	B	1003[A]	-	26,50,50	2.11	3 (11%)	18,82,82	2.13	6 (33%)
2	HEC	B	1003[B]	-	26,50,50	2.11	3 (11%)	18,82,82	2.32	6 (33%)
2	HEC	B	1004	1,3	26,50,50	1.86	6 (23%)	18,82,82	1.25	2 (11%)
2	HEC	B	1005	1	26,50,50	1.94	4 (15%)	18,82,82	1.81	4 (22%)

Mol	Type	Chain	Res	Link	Bond lengths			Bond angles		
					Counts	RMSZ	# Z > 2	Counts	RMSZ	# Z > 2
2	HEC	B	1006	1,4	26,50,50	1.95	4 (15%)	18,82,82	1.87	6 (33%)
2	HEC	B	1007[A]	-	26,50,50	1.97	4 (15%)	18,82,82	1.99	5 (27%)
2	HEC	B	1007[B]	4	26,50,50	1.96	4 (15%)	18,82,82	2.03	5 (27%)
2	HEC	B	1008	1	26,50,50	2.09	3 (11%)	18,82,82	1.78	4 (22%)
3	SO3	B	526	2	1,3,3	2.18	1 (100%)	0,3,3	0.00	-
3	SO3	B	529[A]	-	1,3,3	0.87	0	0,3,3	0.00	-
3	SO3	B	529[B]	-	1,3,3	0.59	0	0,3,3	0.00	-
6	THJ	B	530	-	3,4,4	0.67	0	2,6,6	0.13	0
8	PG6	B	532	-	16,16,17	0.55	0	15,15,16	0.44	0
9	TRS	B	533	-	7,7,7	0.36	0	9,9,9	0.43	0
5	SO4	B	534	-	4,4,4	0.23	0	6,6,6	0.45	0
8	PG6	B	535	-	7,7,17	0.43	0	6,6,16	0.57	0
10	PG4	B	536	-	7,7,12	0.42	0	6,6,11	0.71	0
10	PG4	B	537	-	9,9,12	0.45	0	8,8,11	0.29	0
10	PG4	B	538	-	6,6,12	0.42	0	5,5,11	0.41	0
10	PG4	B	539	-	4,4,12	0.41	0	2,3,11	0.36	0
10	PG4	B	540	-	3,3,12	0.34	0	2,2,11	0.42	0
10	PG4	B	541	-	4,4,12	0.38	0	2,3,11	0.30	0
8	PG6	B	542	-	4,4,17	0.42	0	2,3,16	0.24	0
10	PG4	B	543	-	3,3,12	0.42	0	2,2,11	0.20	0
10	PG4	B	544	-	4,4,12	0.47	0	2,3,11	0.07	0
10	PG4	B	545	-	3,3,12	0.35	0	2,2,11	0.39	0
11	ACT	B	546	-	1,3,3	0.16	0	0,3,3	0.00	-
10	PG4	B	547	-	6,6,12	0.30	0	5,5,11	0.96	0

In the following table, the Chirals column lists the number of chiral outliers, the number of chiral centers analysed, the number of these observed in the model and the number defined in the Chemical Component Dictionary. Similar counts are reported in the Torsion and Rings columns. '-' means no outliers of that kind were identified.

Mol	Type	Chain	Res	Link	Chirals	Torsions	Rings
2	HEC	A	1001	1	-	0/6/54/54	0/0/8/8
2	HEC	A	1002	1	-	0/6/54/54	0/0/8/8
2	HEC	A	1003[A]	-	-	0/6/54/54	0/0/8/8
2	HEC	A	1003[B]	-	-	0/6/54/54	0/0/8/8
2	HEC	A	1004	1,3	-	0/6/54/54	0/0/8/8
2	HEC	A	1005	1	-	0/6/54/54	0/0/8/8
2	HEC	A	1006	1,4	-	0/6/54/54	0/0/8/8
2	HEC	A	1007[A]	-	-	0/6/54/54	0/0/8/8
2	HEC	A	1007[B]	4	-	0/6/54/54	0/0/8/8
2	HEC	A	1008	1	-	0/6/54/54	0/0/8/8

Continued on next page...

Continued from previous page...

Mol	Type	Chain	Res	Link	Chirals	Torsions	Rings
3	SO3	A	526	2	-	0/0/0/0	0/0/0/0
5	SO4	A	529	-	-	0/0/0/0	0/0/0/0
6	THJ	A	530	-	-	0/0/0/0	0/0/0/0
8	PG6	A	532	-	-	0/14/14/15	0/0/0/0
9	TRS	A	533	-	-	0/9/9/9	0/0/0/0
8	PG6	A	534	-	-	0/5/5/15	0/0/0/0
10	PG4	A	535	-	-	0/2/2/10	0/0/0/0
8	PG6	A	536	-	-	0/6/6/15	0/0/0/0
10	PG4	A	537	-	-	0/1/1/10	0/0/0/0
10	PG4	A	538[A]	-	-	0/2/2/10	0/0/0/0
10	PG4	A	538[B]	-	-	0/5/5/10	0/0/0/0
10	PG4	A	539	-	-	0/3/3/10	0/0/0/0
10	PG4	A	540	-	-	0/3/3/10	0/0/0/0
10	PG4	A	541	-	-	0/3/3/10	0/0/0/0
8	PG6	A	542	-	-	0/2/2/15	0/0/0/0
8	PG6	A	543	-	-	0/7/7/15	0/0/0/0
2	HEC	B	1001	1	-	0/6/54/54	0/0/8/8
2	HEC	B	1002	1	-	0/6/54/54	0/0/8/8
2	HEC	B	1003[A]	-	-	0/6/54/54	0/0/8/8
2	HEC	B	1003[B]	-	-	0/6/54/54	0/0/8/8
2	HEC	B	1004	1,3	-	0/6/54/54	0/0/8/8
2	HEC	B	1005	1	-	0/6/54/54	0/0/8/8
2	HEC	B	1006	1,4	-	0/6/54/54	0/0/8/8
2	HEC	B	1007[A]	-	-	0/6/54/54	0/0/8/8
2	HEC	B	1007[B]	4	-	0/6/54/54	0/0/8/8
2	HEC	B	1008	1	-	0/6/54/54	0/0/8/8
3	SO3	B	526	2	-	0/0/0/0	0/0/0/0
3	SO3	B	529[A]	-	-	0/0/0/0	0/0/0/0
3	SO3	B	529[B]	-	-	0/0/0/0	0/0/0/0
6	THJ	B	530	-	-	0/0/0/0	0/0/0/0
8	PG6	B	532	-	-	0/14/14/15	0/0/0/0
9	TRS	B	533	-	-	0/9/9/9	0/0/0/0
5	SO4	B	534	-	-	0/0/0/0	0/0/0/0
8	PG6	B	535	-	-	0/5/5/15	0/0/0/0
10	PG4	B	536	-	-	0/5/5/10	0/0/0/0
10	PG4	B	537	-	-	0/7/7/10	0/0/0/0
10	PG4	B	538	-	-	0/4/4/10	0/0/0/0
10	PG4	B	539	-	-	0/2/2/10	0/0/0/0
10	PG4	B	540	-	-	0/1/1/10	0/0/0/0
10	PG4	B	541	-	-	0/2/2/10	0/0/0/0
8	PG6	B	542	-	-	0/2/2/15	0/0/0/0
10	PG4	B	543	-	-	0/1/1/10	0/0/0/0

Continued on next page...

Continued from previous page...

Mol	Type	Chain	Res	Link	Chirals	Torsions	Rings
10	PG4	B	544	-	-	0/2/2/10	0/0/0/0
10	PG4	B	545	-	-	0/1/1/10	0/0/0/0
11	ACT	B	546	-	-	0/0/0/0	0/0/0/0
10	PG4	B	547	-	-	0/4/4/10	0/0/0/0

All (83) bond length outliers are listed below:

Mol	Chain	Res	Type	Atoms	Z	Observed(Å)	Ideal(Å)
2	A	1007[A]	HEC	C3B-C2B	-6.96	1.33	1.40
2	A	1007[B]	HEC	C3B-C2B	-6.96	1.33	1.40
2	A	1008	HEC	C3B-C2B	-6.67	1.33	1.40
2	A	1003[A]	HEC	C3C-C2C	-6.31	1.34	1.40
2	A	1003[B]	HEC	C3C-C2C	-6.31	1.34	1.40
2	B	1007[B]	HEC	C3B-C2B	-6.08	1.34	1.40
2	B	1007[A]	HEC	C3B-C2B	-6.08	1.34	1.40
2	B	1001	HEC	C3C-C2C	-6.08	1.34	1.40
2	B	1008	HEC	C3B-C2B	-6.01	1.34	1.40
2	A	1001	HEC	C3B-C2B	-5.99	1.34	1.40
2	B	1003[B]	HEC	C3B-C2B	-5.99	1.34	1.40
2	B	1003[A]	HEC	C3B-C2B	-5.99	1.34	1.40
2	B	1005	HEC	C3B-C2B	-5.96	1.34	1.40
2	A	1006	HEC	C3C-C2C	-5.95	1.34	1.40
2	A	1008	HEC	C3C-C2C	-5.92	1.34	1.40
2	A	1005	HEC	C3B-C2B	-5.82	1.34	1.40
2	B	1008	HEC	C3C-C2C	-5.66	1.34	1.40
2	A	1004	HEC	C3C-C2C	-5.58	1.34	1.40
2	A	1002	HEC	C3B-C2B	-5.57	1.34	1.40
2	A	1001	HEC	C3C-C2C	-5.56	1.34	1.40
2	B	1002	HEC	C3C-C2C	-5.42	1.35	1.40
2	B	1006	HEC	C3B-C2B	-5.34	1.35	1.40
2	B	1007[B]	HEC	C3C-C2C	-5.32	1.35	1.40
2	B	1007[A]	HEC	C3C-C2C	-5.32	1.35	1.40
2	B	1004	HEC	C3C-C2C	-5.30	1.35	1.40
2	B	1006	HEC	C3C-C2C	-5.29	1.35	1.40
2	B	1003[B]	HEC	C3C-C2C	-5.21	1.35	1.40
2	B	1003[A]	HEC	C3C-C2C	-5.21	1.35	1.40
2	B	1002	HEC	C3B-C2B	-5.05	1.35	1.40
2	A	1006	HEC	C3B-C2B	-4.91	1.35	1.40
2	A	1007[A]	HEC	C3C-C2C	-4.89	1.35	1.40
2	A	1007[B]	HEC	C3C-C2C	-4.89	1.35	1.40
2	A	1005	HEC	C3C-C2C	-4.78	1.35	1.40
2	B	1001	HEC	C3B-C2B	-4.76	1.35	1.40

Continued on next page...

Continued from previous page...

Mol	Chain	Res	Type	Atoms	Z	Observed(Å)	Ideal(Å)
2	B	1004	HEC	C3B-C2B	-4.71	1.35	1.40
2	A	1002	HEC	C3C-C2C	-4.69	1.35	1.40
2	B	1005	HEC	C3C-C2C	-4.61	1.35	1.40
2	A	1004	HEC	C3B-C2B	-4.52	1.36	1.40
2	A	1003[A]	HEC	C3B-C2B	-4.40	1.36	1.40
2	A	1003[B]	HEC	C3B-C2B	-4.40	1.36	1.40
2	B	1005	HEC	CBB-CAB	2.01	1.57	1.49
2	B	1001	HEC	CMC-C2C	2.01	1.56	1.51
2	B	1006	HEC	C4A-C3A	2.05	1.47	1.42
2	B	1004	HEC	C3C-C4C	2.05	1.46	1.43
2	A	1006	HEC	C4D-ND	2.06	1.40	1.36
2	B	1004	HEC	C4D-ND	2.08	1.40	1.36
2	A	1004	HEC	C3C-C4C	2.08	1.46	1.43
2	A	1005	HEC	C3C-C4C	2.13	1.46	1.43
2	A	1004	HEC	C4D-ND	2.17	1.40	1.36
2	A	1006	HEC	CBB-CAB	2.18	1.58	1.49
3	B	526	SO3	O1-S	2.18	1.53	1.44
2	B	1001	HEC	C4D-ND	2.18	1.40	1.36
2	B	1007[B]	HEC	CBB-CAB	2.19	1.58	1.49
2	B	1007[A]	HEC	CBB-CAB	2.19	1.58	1.49
2	A	1003[A]	HEC	CAA-C2A	2.20	1.56	1.52
2	A	1003[B]	HEC	CAA-C2A	2.20	1.56	1.52
2	B	1004	HEC	CMB-C2B	2.23	1.56	1.51
2	A	1008	HEC	C3C-C4C	2.25	1.47	1.43
2	A	1003[A]	HEC	C1D-ND	2.28	1.40	1.36
2	A	1003[B]	HEC	C1D-ND	2.28	1.40	1.36
2	A	1002	HEC	C1D-ND	2.29	1.40	1.36
2	A	1002	HEC	C1B-NB	2.31	1.40	1.36
2	A	1002	HEC	C3B-C4B	2.35	1.47	1.43
2	B	1007[B]	HEC	C3D-C2D	2.63	1.45	1.37
2	B	1007[A]	HEC	C3D-C2D	2.63	1.45	1.37
2	B	1004	HEC	C3D-C2D	2.65	1.45	1.37
2	A	1007[A]	HEC	C3D-C2D	2.77	1.45	1.37
2	A	1007[B]	HEC	C3D-C2D	2.77	1.45	1.37
2	B	1005	HEC	C3D-C2D	2.79	1.45	1.37
2	A	1005	HEC	C3D-C2D	2.79	1.45	1.37
2	A	1004	HEC	C3D-C2D	2.95	1.46	1.37
2	B	1006	HEC	C3D-C2D	3.03	1.46	1.37
2	B	1002	HEC	C3D-C2D	3.09	1.46	1.37
2	A	1006	HEC	C3D-C2D	3.10	1.46	1.37
2	A	1002	HEC	C3D-C2D	3.16	1.47	1.37
2	A	1001	HEC	C3D-C2D	3.26	1.47	1.37

Continued on next page...

Continued from previous page...

Mol	Chain	Res	Type	Atoms	Z	Observed(Å)	Ideal(Å)
2	A	1008	HEC	C3D-C2D	3.30	1.47	1.37
2	B	1003[B]	HEC	C3D-C2D	3.69	1.48	1.37
2	B	1003[A]	HEC	C3D-C2D	3.69	1.48	1.37
2	B	1008	HEC	C3D-C2D	3.77	1.48	1.37
2	A	1003[A]	HEC	C3D-C2D	3.91	1.49	1.37
2	A	1003[B]	HEC	C3D-C2D	3.91	1.49	1.37
2	B	1001	HEC	C3D-C2D	4.24	1.50	1.37

All (100) bond angle outliers are listed below:

Mol	Chain	Res	Type	Atoms	Z	Observed(°)	Ideal(°)
2	B	1003[B]	HEC	CAA-CBA-CGA	-6.05	102.33	112.66
2	A	1007[A]	HEC	CMB-C2B-C1B	-5.32	120.29	128.46
2	A	1007[B]	HEC	CMB-C2B-C1B	-5.32	120.29	128.46
2	B	1007[B]	HEC	CMB-C2B-C1B	-5.00	120.77	128.46
2	B	1007[A]	HEC	CMB-C2B-C1B	-5.00	120.77	128.46
2	A	1005	HEC	CMB-C2B-C1B	-4.98	120.81	128.46
2	B	1003[B]	HEC	CMB-C2B-C1B	-4.70	121.25	128.46
2	B	1003[A]	HEC	CMB-C2B-C1B	-4.70	121.25	128.46
2	A	1003[A]	HEC	CMB-C2B-C1B	-4.56	121.45	128.46
2	A	1003[B]	HEC	CMB-C2B-C1B	-4.56	121.45	128.46
2	A	1008	HEC	CMB-C2B-C1B	-4.48	121.58	128.46
2	B	1003[A]	HEC	CBA-CAA-C2A	-4.43	104.02	112.47
2	B	1008	HEC	CMB-C2B-C1B	-4.27	121.91	128.46
2	B	1005	HEC	CMB-C2B-C1B	-4.11	122.15	128.46
2	B	1001	HEC	CMC-C2C-C1C	-4.05	122.24	128.46
2	B	1001	HEC	CMB-C2B-C1B	-3.95	122.39	128.46
2	B	1002	HEC	CAA-CBA-CGA	-3.86	106.06	112.66
2	B	1002	HEC	CMC-C2C-C1C	-3.86	122.53	128.46
2	A	1001	HEC	CMB-C2B-C1B	-3.76	122.68	128.46
2	B	1006	HEC	CMC-C2C-C1C	-3.71	122.76	128.46
2	A	1006	HEC	CMC-C2C-C1C	-3.71	122.77	128.46
2	A	1002	HEC	CMB-C2B-C1B	-3.56	122.99	128.46
2	A	1002	HEC	CAA-CBA-CGA	-3.44	106.79	112.66
2	B	1002	HEC	CMB-C2B-C1B	-3.38	123.27	128.46
2	A	1006	HEC	CMB-C2B-C1B	-3.36	123.30	128.46
2	A	1008	HEC	CMC-C2C-C1C	-3.35	123.31	128.46
2	A	1004	HEC	CMB-C2B-C1B	-3.33	123.34	128.46
2	B	1005	HEC	CMC-C2C-C1C	-3.31	123.38	128.46
2	A	1003[B]	HEC	CAA-CBA-CGA	-3.28	107.05	112.66
2	A	1004	HEC	CMC-C2C-C1C	-3.18	123.57	128.46
2	A	1003[A]	HEC	CBA-CAA-C2A	-3.18	106.40	112.47

Continued on next page...

Continued from previous page...

Mol	Chain	Res	Type	Atoms	Z	Observed(°)	Ideal(°)
2	A	1005	HEC	CMC-C2C-C1C	-3.16	123.61	128.46
2	A	1006	HEC	C1D-C2D-C3D	-2.92	104.96	107.00
2	A	1001	HEC	CMC-C2C-C1C	-2.87	124.06	128.46
2	B	1004	HEC	CMC-C2C-C1C	-2.79	124.18	128.46
2	B	1006	HEC	CMB-C2B-C1B	-2.73	124.27	128.46
2	B	1006	HEC	C1D-C2D-C3D	-2.73	105.10	107.00
2	A	1004	HEC	C1D-C2D-C3D	-2.71	105.11	107.00
2	B	1003[B]	HEC	CMC-C2C-C1C	-2.62	124.43	128.46
2	B	1003[A]	HEC	CMC-C2C-C1C	-2.62	124.43	128.46
2	B	1001	HEC	CBA-CAA-C2A	-2.62	107.46	112.47
2	B	1007[B]	HEC	C1D-C2D-C3D	-2.61	105.18	107.00
2	B	1007[A]	HEC	C1D-C2D-C3D	-2.61	105.18	107.00
2	A	1008	HEC	CBD-CAD-C3D	-2.60	107.52	112.48
2	B	1007[B]	HEC	CBD-CAD-C3D	-2.59	107.53	112.48
2	B	1007[A]	HEC	CBD-CAD-C3D	-2.59	107.53	112.48
2	B	1008	HEC	CBD-CAD-C3D	-2.56	107.60	112.48
2	B	1007[B]	HEC	CBA-CAA-C2A	-2.53	107.64	112.47
2	B	1001	HEC	C4B-C3B-C2B	-2.48	103.67	106.35
2	A	1002	HEC	CMC-C2C-C1C	-2.42	124.75	128.46
2	B	1008	HEC	CMC-C2C-C1C	-2.37	124.83	128.46
2	A	1003[A]	HEC	CMC-C2C-C1C	-2.33	124.89	128.46
2	A	1003[B]	HEC	CMC-C2C-C1C	-2.33	124.89	128.46
2	A	1007[A]	HEC	CBA-CAA-C2A	-2.24	108.19	112.47
2	A	1007[A]	HEC	CMC-C2C-C1C	-2.23	125.03	128.46
2	A	1007[B]	HEC	CMC-C2C-C1C	-2.23	125.03	128.46
2	A	1007[B]	HEC	CBA-CAA-C2A	-2.21	108.25	112.47
2	A	1001	HEC	CBA-CAA-C2A	-2.18	108.32	112.47
2	B	1004	HEC	CMB-C2B-C1B	-2.14	125.18	128.46
2	A	1007[A]	HEC	CBD-CAD-C3D	-2.12	108.42	112.48
2	A	1007[B]	HEC	CBD-CAD-C3D	-2.12	108.42	112.48
2	B	1001	HEC	CBD-CAD-C3D	-2.04	108.59	112.48
2	B	1007[A]	HEC	CBA-CAA-C2A	-2.04	108.58	112.47
2	B	1003[B]	HEC	CMB-C2B-C3B	2.04	128.22	125.82
2	B	1003[A]	HEC	CMB-C2B-C3B	2.04	128.22	125.82
2	A	1002	HEC	CAD-CBD-CGD	2.05	116.16	112.66
2	A	1006	HEC	CMB-C2B-C3B	2.05	128.23	125.82
2	B	1002	HEC	CAD-CBD-CGD	2.06	116.18	112.66
2	B	1006	HEC	CMB-C2B-C3B	2.06	128.25	125.82
2	B	1003[B]	HEC	CMC-C2C-C3C	2.28	128.50	125.82
2	B	1003[A]	HEC	CMC-C2C-C3C	2.28	128.50	125.82
2	A	1008	HEC	CMC-C2C-C3C	2.30	128.52	125.82
2	A	1005	HEC	CMA-C3A-C2A	2.33	129.34	124.94

Continued on next page...

Continued from previous page...

Mol	Chain	Res	Type	Atoms	Z	Observed(°)	Ideal(°)
2	B	1003[B]	HEC	CBA-CAA-C2A	2.39	117.02	112.47
9	A	533	TRS	O2-C2-C	2.40	117.42	110.47
2	A	1007[A]	HEC	CMA-C3A-C2A	2.45	129.56	124.94
2	A	1007[B]	HEC	CMA-C3A-C2A	2.45	129.56	124.94
2	A	1003[A]	HEC	CMB-C2B-C3B	2.53	128.80	125.82
2	A	1003[B]	HEC	CMB-C2B-C3B	2.53	128.80	125.82
2	A	1005	HEC	CMC-C2C-C3C	2.62	128.90	125.82
2	B	1003[A]	HEC	CAA-CBA-CGA	2.62	117.14	112.66
2	A	1006	HEC	CMC-C2C-C3C	2.63	128.91	125.82
2	A	1002	HEC	CMC-C2C-C3C	2.68	128.97	125.82
2	A	1001	HEC	CMA-C3A-C2A	2.69	130.01	124.94
2	A	1008	HEC	CMB-C2B-C3B	2.73	129.03	125.82
2	A	1006	HEC	CMA-C3A-C2A	2.75	130.13	124.94
2	B	1005	HEC	CMC-C2C-C3C	2.82	129.13	125.82
2	A	1004	HEC	CMB-C2B-C3B	2.92	129.25	125.82
2	A	1003[A]	HEC	CAA-CBA-CGA	2.95	117.69	112.66
2	B	1005	HEC	CMB-C2B-C3B	3.05	129.41	125.82
2	A	1007[A]	HEC	CMB-C2B-C3B	3.09	129.45	125.82
2	A	1007[B]	HEC	CMB-C2B-C3B	3.09	129.45	125.82
2	B	1002	HEC	CMC-C2C-C3C	3.10	129.47	125.82
2	B	1006	HEC	CMC-C2C-C3C	3.15	129.53	125.82
2	B	1006	HEC	CMA-C3A-C2A	3.26	131.08	124.94
2	B	1008	HEC	CMB-C2B-C3B	3.54	129.98	125.82
2	B	1007[B]	HEC	CMB-C2B-C3B	3.66	130.13	125.82
2	B	1007[A]	HEC	CMB-C2B-C3B	3.66	130.13	125.82
2	A	1005	HEC	CMB-C2B-C3B	4.05	130.59	125.82
2	A	1003[B]	HEC	CBA-CAA-C2A	5.23	122.45	112.47

There are no chirality outliers.

There are no torsion outliers.

There are no ring outliers.

33 monomers are involved in 64 short contacts:

Mol	Chain	Res	Type	Clashes	Symm-Clashes
2	A	1001	HEC	2	0
2	A	1002	HEC	1	0
2	A	1003[B]	HEC	3	0
2	A	1004	HEC	2	0
2	A	1006	HEC	1	0
2	A	1007[B]	HEC	1	0
2	A	1008	HEC	2	0

Continued on next page...

Continued from previous page...

Mol	Chain	Res	Type	Clashes	Symm-Clashes
6	A	530	THJ	1	0
8	A	532	PG6	3	0
9	A	533	TRS	1	0
10	A	535	PG4	1	0
8	A	536	PG6	3	0
10	A	538[A]	PG4	1	0
10	A	539	PG4	1	0
8	A	542	PG6	5	0
8	A	543	PG6	2	0
2	B	1001	HEC	1	0
2	B	1002	HEC	1	0
2	B	1003[B]	HEC	1	0
2	B	1004	HEC	1	0
2	B	1006	HEC	1	0
2	B	1007[B]	HEC	1	0
2	B	1008	HEC	2	0
8	B	532	PG6	2	0
9	B	533	TRS	3	0
8	B	535	PG6	1	0
10	B	536	PG4	3	0
10	B	537	PG4	1	0
10	B	538	PG4	2	0
10	B	539	PG4	2	0
10	B	540	PG4	3	0
10	B	541	PG4	1	0
10	B	547	PG4	10	0

5.7 Other polymers [i](#)

There are no such residues in this entry.

5.8 Polymer linkage issues [i](#)

There are no chain breaks in this entry.

6 Fit of model and data [i](#)

6.1 Protein, DNA and RNA chains [i](#)

In the following table, the column labelled ‘#RSRZ > 2’ contains the number (and percentage) of RSRZ outliers, followed by percent RSRZ outliers for the chain as percentile scores relative to all X-ray entries and entries of similar resolution. The OWAB column contains the minimum, median, 95th percentile and maximum values of the occupancy-weighted average B-factor per residue. The column labelled ‘Q < 0.9’ lists the number of (and percentage) of residues with an average occupancy less than 0.9.

Mol	Chain	Analysed	<RSRZ>	#RSRZ>2	OWAB(Å ²)	Q<0.9
1	A	519/525 (98%)	-0.91	2 (0%) 92 91	11, 16, 25, 44	2 (0%)
1	B	519/525 (98%)	-0.85	5 (0%) 82 81	11, 15, 26, 44	3 (0%)
All	All	1038/1050 (98%)	-0.88	7 (0%) 87 87	11, 15, 26, 44	5 (0%)

All (7) RSRZ outliers are listed below:

Mol	Chain	Res	Type	RSRZ
1	B	523	ALA	7.8
1	A	522	VAL	7.0
1	B	522	VAL	6.1
1	A	523	ALA	2.8
1	B	204	GLU	2.3
1	B	16	ASP	2.1
1	B	46	GLU	2.0

6.2 Non-standard residues in protein, DNA, RNA chains [i](#)

There are no non-standard protein/DNA/RNA residues in this entry.

6.3 Carbohydrates [i](#)

There are no carbohydrates in this entry.

6.4 Ligands [i](#)

In the following table, the Atoms column lists the number of modelled atoms in the group and the number defined in the chemical component dictionary. The B-factors column lists the minimum, median, 95th percentile and maximum values of B factors of atoms in the group. The column labelled ‘Q < 0.9’ lists the number of atoms with occupancy less than 0.9.

Mol	Type	Chain	Res	Atoms	RSCC	RSR	B-factors(\AA^2)	Q<0.9
11	ACT	B	546	4/4	0.45	0.27	34,35,36,36	0
10	PG4	B	544	5/13	0.68	0.16	25,26,28,29	5
10	PG4	B	545	4/13	0.68	0.27	35,35,36,36	4
8	PG6	A	543	10/18	0.70	0.18	29,31,33,34	10
10	PG4	A	541	6/13	0.71	0.17	36,36,37,38	6
10	PG4	B	540	4/13	0.72	0.20	29,31,31,31	4
8	PG6	A	536	9/18	0.74	0.12	40,42,42,42	9
10	PG4	B	537	10/13	0.76	0.15	39,42,44,44	10
10	PG4	B	541	5/13	0.80	0.12	47,47,48,49	0
10	PG4	A	539	6/13	0.82	0.14	47,48,48,48	0
10	PG4	A	538[A]	5/13	0.83	0.14	36,38,40,41	2
9	TRS	B	533	8/8	0.83	0.22	15,15,16,16	8
10	PG4	A	538[B]	8/13	0.83	0.14	39,40,41,41	5
10	PG4	A	537	4/13	0.84	0.11	35,36,36,36	4
8	PG6	A	542	5/18	0.84	0.28	52,52,52,53	5
8	PG6	A	534	8/18	0.84	0.13	28,33,40,40	0
10	PG4	B	538	7/13	0.86	0.12	31,31,32,33	7
8	PG6	B	535	8/18	0.88	0.13	34,36,38,38	0
8	PG6	B	532	17/18	0.88	0.14	16,19,22,25	17
10	PG4	B	539	5/13	0.88	0.13	23,27,27,27	5
8	PG6	B	542	5/18	0.89	0.09	45,45,45,45	5
9	TRS	A	533	8/8	0.89	0.18	12,13,14,14	8
8	PG6	A	532	17/18	0.90	0.11	17,21,27,29	17
10	PG4	B	536	8/13	0.91	0.21	18,25,29,29	8
10	PG4	B	543	4/13	0.93	0.17	47,48,48,48	0
5	SO4	A	529	5/5	0.94	0.15	19,21,26,26	5
10	PG4	A	540	6/13	0.94	0.09	50,50,51,51	0
10	PG4	B	547	7/13	0.94	0.12	18,22,24,26	7
7	NA	B	548	1/1	0.95	0.06	24,24,24,24	1
6	THJ	A	530	5/5	0.96	0.07	24,24,24,28	5
7	NA	B	549	1/1	0.97	0.28	30,30,30,30	1
3	SO3	B	529[B]	4/4	0.97	0.24	17,18,22,22	4
3	SO3	B	529[A]	4/4	0.97	0.24	17,18,20,22	4
5	SO4	B	534	5/5	0.97	0.11	14,18,23,25	5
10	PG4	A	535	5/13	0.98	0.17	14,17,20,22	5
2	HEC	B	1003[A]	43/43	0.98	0.07	12,13,23,33	4
2	HEC	A	1008	43/43	0.98	0.06	12,14,22,34	0
2	HEC	A	1003[B]	43/43	0.98	0.07	11,13,23,29	4
2	HEC	B	1003[B]	43/43	0.98	0.07	12,13,23,33	4
2	HEC	A	1003[A]	43/43	0.98	0.07	11,13,21,29	4
7	NA	A	544	1/1	0.98	0.09	23,23,23,23	1
4	CA	B	528	1/1	0.99	0.04	18,18,18,18	1
2	HEC	A	1007[A]	43/43	0.99	0.04	10,11,13,14	4

Continued on next page...

Continued from previous page...

Mol	Type	Chain	Res	Atoms	RSCC	RSR	B-factors(Å ²)	Q<0.9
2	HEC	B	1007[B]	43/43	0.99	0.05	10,11,13,14	4
2	HEC	A	1007[B]	43/43	0.99	0.04	10,11,13,14	4
2	HEC	A	1004	43/43	0.99	0.04	11,12,14,17	0
4	CA	A	528	1/1	0.99	0.03	18,18,18,18	1
2	HEC	B	1005	43/43	0.99	0.05	10,12,15,19	0
3	SO3	A	526	4/4	0.99	0.04	14,15,17,18	0
6	THJ	B	530	5/5	0.99	0.05	23,23,23,25	5
2	HEC	A	1006	43/43	0.99	0.05	10,11,12,14	0
2	HEC	B	1008	43/43	0.99	0.05	11,14,21,32	0
2	HEC	B	1004	43/43	0.99	0.05	10,12,14,16	0
2	HEC	B	1006	43/43	0.99	0.05	9,11,12,13	0
2	HEC	A	1002	43/43	0.99	0.04	12,13,15,17	0
2	HEC	B	1002	43/43	0.99	0.04	13,15,17,19	0
2	HEC	B	1001	43/43	0.99	0.05	17,19,24,26	0
2	HEC	A	1005	43/43	0.99	0.05	11,12,16,19	0
2	HEC	B	1007[A]	43/43	0.99	0.05	10,11,13,14	4
2	HEC	A	1001	43/43	0.99	0.04	13,14,20,21	0
7	NA	B	531	1/1	1.00	0.12	23,23,23,23	1
4	CA	B	527	1/1	1.00	0.02	13,13,13,13	0
3	SO3	B	526	4/4	1.00	0.04	14,14,16,17	0
4	CA	A	527	1/1	1.00	0.02	13,13,13,13	0
7	NA	A	531	1/1	1.00	0.05	23,23,23,23	1

6.5 Other polymers [i](#)

There are no such residues in this entry.