



Full wwPDB X-ray Structure Validation Report ⓘ

Mar 10, 2018 – 04:56 pm GMT

PDB ID : 3FO9
Title : Crystal structure of aldolase antibody 33F12 Fab' in complex with haptan 1,3-diketone
Authors : Zhu, X.; Wilson, I.A.
Deposited on : 2008-12-29
Resolution : 1.90 Å(reported)

This is a Full wwPDB X-ray Structure Validation Report for a publicly released PDB entry.

We welcome your comments at validation@mail.wwpdb.org

A user guide is available at

<https://www.wwpdb.org/validation/2017/XrayValidationReportHelp>

with specific help available everywhere you see the ⓘ symbol.

The following versions of software and data (see [references ⓘ](#)) were used in the production of this report:

MolProbity : 4.02b-467
Mogul : 1.7.3 (157068), CSD as539be (2018)
Xtriage (Phenix) : 1.13
EDS : trunk30967
Percentile statistics : 20171227.v01 (using entries in the PDB archive December 27th 2017)
Refmac : 5.8.0158
CCP4 : 7.0 (Gargrove)
Ideal geometry (proteins) : Engh & Huber (2001)
Ideal geometry (DNA, RNA) : Parkinson et al. (1996)
Validation Pipeline (wwPDB-VP) : trunk30967

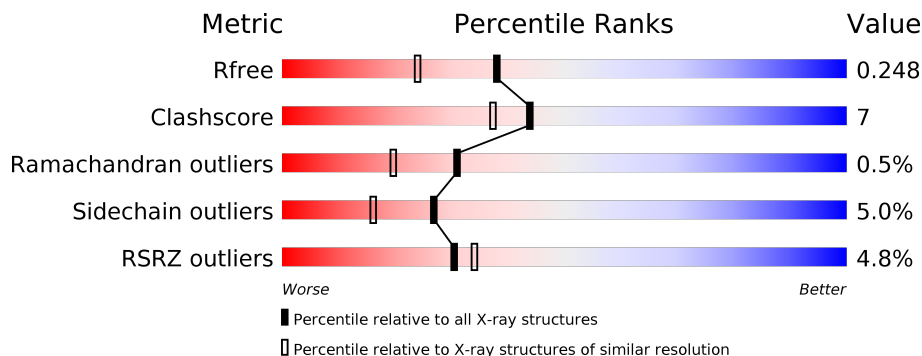
1 Overall quality at a glance

The following experimental techniques were used to determine the structure:

X-RAY DIFFRACTION

The reported resolution of this entry is 1.90 Å.

Percentile scores (ranging between 0-100) for global validation metrics of the entry are shown in the following graphic. The table shows the number of entries on which the scores are based.



Metric	Whole archive (#Entries)	Similar resolution (#Entries, resolution range(Å))
R_{free}	111664	5502 (1.90-1.90)
Clashscore	122126	6115 (1.90-1.90)
Ramachandran outliers	120053	6048 (1.90-1.90)
Sidechain outliers	120020	6048 (1.90-1.90)
RSRZ outliers	108989	5379 (1.90-1.90)

The table below summarises the geometric issues observed across the polymeric chains and their fit to the electron density. The red, orange, yellow and green segments on the lower bar indicate the fraction of residues that contain outliers for ≥ 3 , 2, 1 and 0 types of geometric quality criteria. A grey segment represents the fraction of residues that are not modelled. The numeric value for each fraction is indicated below the corresponding segment, with a dot representing fractions $\leq 5\%$. The upper red bar (where present) indicates the fraction of residues that have poor fit to the electron density. The numeric value is given above the bar.

Mol	Chain	Length	Quality of chain
1	A	219	 5% 84% 15% •
1	L	219	 4% 81% 17% •
2	B	218	 4% 84% 12% •
2	H	218	 6% 86% 12% •

2 Entry composition [i](#)

There are 4 unique types of molecules in this entry. The entry contains 7028 atoms, of which 0 are hydrogens and 0 are deuteriums.

In the tables below, the ZeroOcc column contains the number of atoms modelled with zero occupancy, the AltConf column contains the number of residues with at least one atom in alternate conformation and the Trace column contains the number of residues modelled with at most 2 atoms.

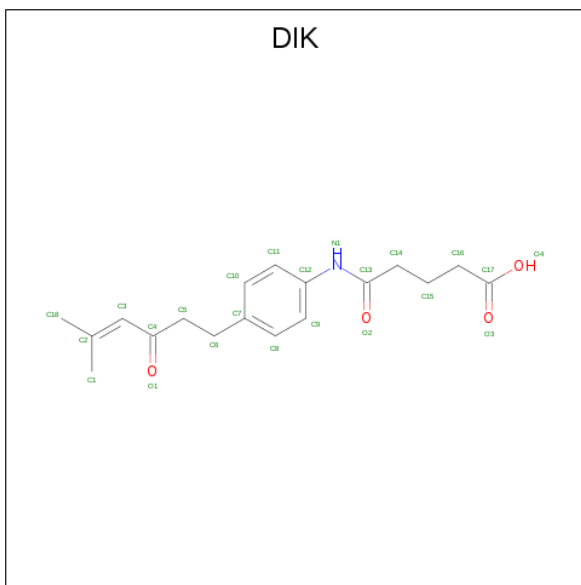
- Molecule 1 is a protein called Immunoglobulin IGG2A - light chain.

Mol	Chain	Residues	Atoms					ZeroOcc	AltConf	Trace
			Total	C	N	O	S			
1	L	219	Total 1697	C 1060	N 287	O 343	S 7	0	0	0
1	A	219	Total 1697	C 1060	N 287	O 343	S 7	0	0	0

- Molecule 2 is a protein called Immunoglobulin IGG2A - heavy chain.

Mol	Chain	Residues	Atoms					ZeroOcc	AltConf	Trace
			Total	C	N	O	S			
2	H	218	Total 1676	C 1066	N 274	O 328	S 8	0	0	0
2	B	218	Total 1676	C 1066	N 274	O 328	S 8	0	0	0

- Molecule 3 is 5-[[4-(5-methyl-3-oxohex-4-en-1-yl)phenyl]amino]-5-oxopentanoic acid (three-letter code: DIK) (formula: C₁₈H₂₃NO₄).



Mol	Chain	Residues	Atoms				ZeroOcc	AltConf
3	H	1	Total	C	N	O	0	0
			22	17	1	4		
3	B	1	Total	C	N	O	0	0
			22	17	1	4		

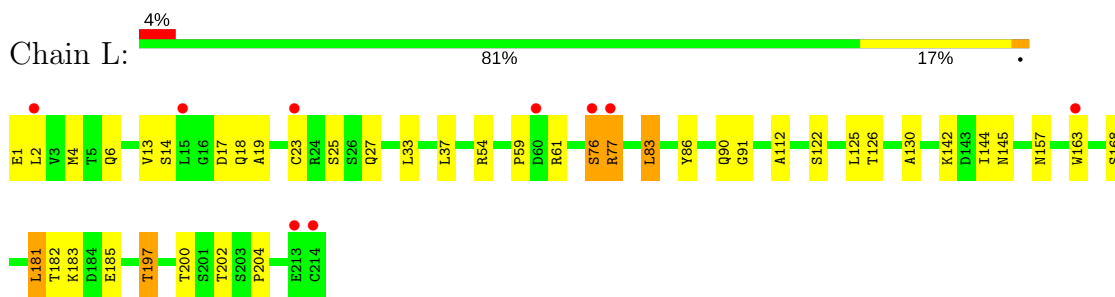
- Molecule 4 is water.

Mol	Chain	Residues	Atoms		ZeroOcc	AltConf
4	L	231	Total	O	0	0
			231	231		
4	H	4	Total	O	0	0
			4	4		
4	A	3	Total	O	0	0
			3	3		

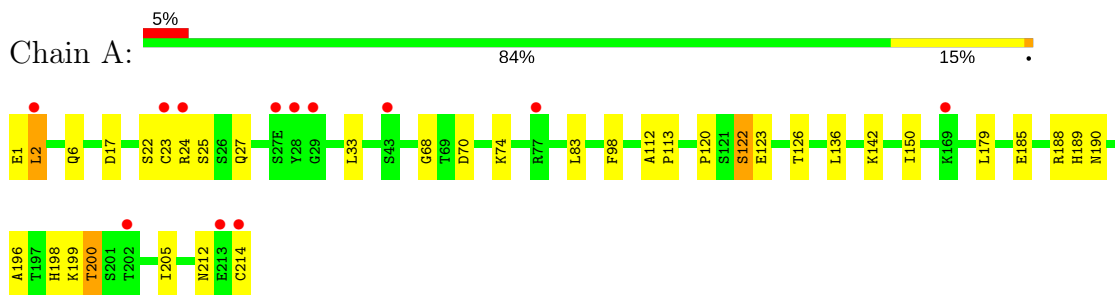
3 Residue-property plots [i](#)

These plots are drawn for all protein, RNA and DNA chains in the entry. The first graphic for a chain summarises the proportions of the various outlier classes displayed in the second graphic. The second graphic shows the sequence view annotated by issues in geometry and electron density. Residues are color-coded according to the number of geometric quality criteria for which they contain at least one outlier: green = 0, yellow = 1, orange = 2 and red = 3 or more. A red dot above a residue indicates a poor fit to the electron density ($RSRZ > 2$). Stretches of 2 or more consecutive residues without any outlier are shown as a green connector. Residues present in the sample, but not in the model, are shown in grey.

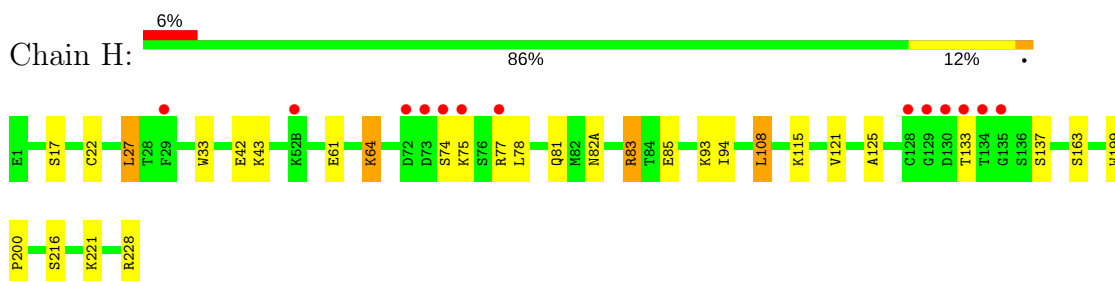
- Molecule 1: Immunoglobulin IGG2A - light chain



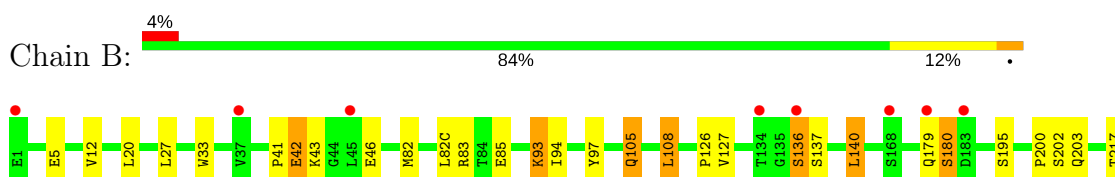
- Molecule 1: Immunoglobulin IGG2A - light chain



- Molecule 2: Immunoglobulin IGG2A - heavy chain



- Molecule 2: Immunoglobulin IGG2A - heavy chain



V218
V219
I223
E226
P227
R228

4 Data and refinement statistics

Property	Value	Source
Space group	P 21 21 21	Depositor
Cell constants a, b, c, α , β , γ	65.83Å 81.04Å 174.31Å 90.00° 90.00° 90.00°	Depositor
Resolution (Å)	43.56 – 1.90 43.56 – 1.90	Depositor EDS
% Data completeness (in resolution range)	96.1 (43.56-1.90) 96.1 (43.56-1.90)	Depositor EDS
R_{merge}	0.05	Depositor
R_{sym}	(Not available)	Depositor
$\langle I/\sigma(I) \rangle$ ¹	1.92 (at 1.89Å)	Xtrriage
Refinement program	REFMAC	Depositor
R, R_{free}	0.215 , 0.249 0.213 , 0.248	Depositor DCC
R_{free} test set	3601 reflections (5.04%)	wwPDB-VP
Wilson B-factor (Å ²)	37.6	Xtrriage
Anisotropy	0.383	Xtrriage
Bulk solvent k_{sol} (e/Å ³), B_{sol} (Å ²)	0.37 , 51.9	EDS
L-test for twinning ²	$\langle L \rangle = 0.49$, $\langle L^2 \rangle = 0.32$	Xtrriage
Estimated twinning fraction	No twinning to report.	Xtrriage
F_o, F_c correlation	0.96	EDS
Total number of atoms	7028	wwPDB-VP
Average B, all atoms (Å ²)	41.0	wwPDB-VP

Xtrriage's analysis on translational NCS is as follows: *The largest off-origin peak in the Patterson function is 4.17% of the height of the origin peak. No significant pseudotranslation is detected.*

¹Intensities estimated from amplitudes.

²Theoretical values of $\langle |L| \rangle$, $\langle L^2 \rangle$ for acentric reflections are 0.5, 0.333 respectively for untwinned datasets, and 0.375, 0.2 for perfectly twinned datasets.

5 Model quality [i](#)

5.1 Standard geometry [i](#)

Bond lengths and bond angles in the following residue types are not validated in this section: DIK

The Z score for a bond length (or angle) is the number of standard deviations the observed value is removed from the expected value. A bond length (or angle) with $|Z| > 5$ is considered an outlier worth inspection. RMSZ is the root-mean-square of all Z scores of the bond lengths (or angles).

Mol	Chain	Bond lengths		Bond angles	
		RMSZ	# Z >5	RMSZ	# Z >5
1	A	0.47	0/1735	0.58	0/2351
1	L	0.52	0/1735	0.63	0/2351
2	B	0.54	0/1719	0.65	0/2339
2	H	0.51	0/1719	0.62	0/2339
All	All	0.51	0/6908	0.62	0/9380

There are no bond length outliers.

There are no bond angle outliers.

There are no chirality outliers.

There are no planarity outliers.

5.2 Too-close contacts [i](#)

In the following table, the Non-H and H(model) columns list the number of non-hydrogen atoms and hydrogen atoms in the chain respectively. The H(added) column lists the number of hydrogen atoms added and optimized by MolProbity. The Clashes column lists the number of clashes within the asymmetric unit, whereas Symm-Clashes lists symmetry related clashes.

Mol	Chain	Non-H	H(model)	H(added)	Clashes	Symm-Clashes
1	A	1697	0	1637	19	0
1	L	1697	0	1637	37	0
2	B	1676	0	1645	26	0
2	H	1676	0	1645	15	0
3	B	22	0	19	6	0
3	H	22	0	19	4	0
4	A	3	0	0	0	0
4	H	4	0	0	0	0
4	L	231	0	0	4	0
All	All	7028	0	6602	97	0

The all-atom clashscore is defined as the number of clashes found per 1000 atoms (including hydrogen atoms). The all-atom clashscore for this structure is 7.

All (97) close contacts within the same asymmetric unit are listed below, sorted by their clash magnitude.

Atom-1	Atom-2	Interatomic distance (Å)	Clash overlap (Å)
1:A:2:LEU:CD2	1:A:27:GLN:HG2	2.01	0.91
1:L:77:ARG:HG3	1:L:77:ARG:HH11	1.38	0.89
1:L:77:ARG:HH11	1:L:77:ARG:CG	1.89	0.84
1:A:2:LEU:HD11	1:A:25:SER:HB2	1.58	0.84
1:L:112:ALA:HB2	1:L:200:THR:HG21	1.58	0.84
2:H:33:TRP:CH2	3:H:500:DIK:H16A	2.13	0.82
2:B:5:GLU:HA	2:B:105:GLN:HE22	1.43	0.81
2:B:136:SER:HA	2:B:195:SER:HB2	1.65	0.79
4:L:276:HOH:O	2:H:108:LEU:HD13	1.85	0.76
1:L:2:LEU:HD12	1:L:27:GLN:HG2	1.68	0.75
1:A:24:ARG:NH1	1:A:70:ASP:OD1	2.20	0.74
2:B:105:GLN:HE21	2:B:105:GLN:H	1.35	0.74
1:L:142:LYS:O	1:L:163:TRP:CZ3	2.41	0.73
1:A:2:LEU:HD23	1:A:27:GLN:HG2	1.71	0.73
1:L:2:LEU:CD1	1:L:27:GLN:HG2	2.19	0.72
2:H:83:ARG:HD3	2:H:85:GLU:OE2	1.89	0.72
1:L:144:ILE:HG22	1:L:163:TRP:CH2	2.23	0.72
1:L:2:LEU:HD22	1:L:90:GLN:HG2	1.78	0.66
1:L:77:ARG:HG3	1:L:77:ARG:NH1	2.13	0.63
1:A:122:SER:O	1:A:126:THR:HG23	1.99	0.63
2:B:41:PRO:HD2	2:B:42:GLU:OE2	1.98	0.63
2:H:27:LEU:HD11	2:H:94:ILE:HD13	1.80	0.62
2:B:97:TYR:CZ	3:B:500:DIK:H15A	2.36	0.61
2:B:136:SER:CA	2:B:195:SER:HB2	2.32	0.60
1:L:91:GLY:HA3	3:H:500:DIK:H5A	1.83	0.60
1:A:190:ASN:HD21	1:A:212:ASN:H	1.50	0.59
2:B:5:GLU:HA	2:B:105:GLN:NE2	2.17	0.59
1:L:17:ASP:O	1:L:76:SER:O	2.20	0.59
1:L:197:THR:HG22	1:L:204:PRO:HB3	1.85	0.58
1:A:214:CYS:SG	2:B:127:VAL:HG13	2.45	0.57
1:L:2:LEU:HD21	1:L:25:SER:HB2	1.87	0.57
1:A:112:ALA:HA	1:A:200:THR:HG21	1.87	0.56
1:L:142:LYS:O	1:L:163:TRP:HZ3	1.86	0.56
2:H:17:SER:HB2	2:H:82(A):ASN:HD22	1.70	0.56
1:A:2:LEU:HD22	1:A:27:GLN:HG2	1.83	0.56
4:L:284:HOH:O	2:B:108:LEU:HD13	2.06	0.56
1:L:142:LYS:O	1:L:163:TRP:CH2	2.59	0.56

Continued on next page...

Continued from previous page...

Atom-1	Atom-2	Interatomic distance (Å)	Clash overlap (Å)
2:B:126:PRO:HD3	2:B:140:LEU:HD12	1.90	0.54
2:B:136:SER:HA	2:B:195:SER:CB	2.36	0.54
1:L:59:PRO:HB2	1:L:61:ARG:HG3	1.89	0.54
1:L:130:ALA:O	1:L:181:LEU:HD23	2.06	0.54
1:L:182:THR:OG1	1:L:185:GLU:HG3	2.07	0.53
2:B:43:LYS:HE2	2:B:46:GLU:OE1	2.08	0.53
2:B:136:SER:C	2:B:195:SER:HB2	2.29	0.53
2:B:200:PRO:HB3	2:B:227:PRO:HG3	1.91	0.53
1:A:120:PRO:O	2:B:228:ARG:NH2	2.42	0.52
2:B:140:LEU:HG	2:B:223:ILE:HG21	1.93	0.51
2:B:179:GLN:O	2:B:180:SER:HB2	2.10	0.51
1:L:18:GLN:HG3	1:L:76:SER:HA	1.92	0.51
2:B:105:GLN:NE2	2:B:105:GLN:H	2.07	0.50
1:L:91:GLY:HA3	3:H:500:DIK:C5	2.40	0.50
1:L:1:GLU:HB2	4:L:235:HOH:O	2.11	0.49
2:B:93:LYS:NZ	3:B:500:DIK:O1	2.45	0.49
1:A:185:GLU:O	1:A:189:HIS:HD2	1.96	0.49
1:A:136:LEU:CD2	1:A:196:ALA:HB2	2.43	0.49
1:L:2:LEU:HD12	1:L:27:GLN:CG	2.42	0.49
2:H:61:GLU:O	2:H:64:LYS:HG2	2.13	0.48
1:L:14:SER:O	1:L:17:ASP:HB2	2.15	0.47
2:H:75:LYS:HE2	2:H:77:ARG:HE	1.80	0.47
2:B:33:TRP:CH2	3:B:500:DIK:H16A	2.50	0.47
1:L:181:LEU:HD23	1:L:181:LEU:H	1.79	0.47
1:L:144:ILE:HG22	1:L:163:TRP:HH2	1.77	0.47
1:L:2:LEU:CD2	1:L:4:MET:SD	3.02	0.46
2:B:12:VAL:HG11	2:B:82(C):LEU:HD13	1.98	0.46
3:B:500:DIK:H5	3:B:500:DIK:H10	1.59	0.46
2:H:81:GLN:HE21	2:H:82(A):ASN:HD21	1.64	0.46
2:H:83:ARG:NH1	2:H:85:GLU:OE2	2.50	0.45
1:A:98:PHE:CE2	3:B:500:DIK:H1B	2.52	0.45
1:A:198:HIS:ND1	1:A:200:THR:HB	2.32	0.45
3:H:500:DIK:H10	3:H:500:DIK:H5	1.80	0.45
4:L:437:HOH:O	3:B:500:DIK:H14	2.17	0.45
1:L:122:SER:O	1:L:126:THR:HG23	2.17	0.44
2:H:199:TRP:CG	2:H:200:PRO:HA	2.52	0.44
1:L:54:ARG:HD2	1:L:59:PRO:O	2.18	0.43
1:A:113:PRO:HG2	1:A:205:ILE:HD12	2.00	0.43
2:B:20:LEU:HD21	2:B:82:MET:HE1	2.00	0.43
1:L:2:LEU:HD11	1:L:27:GLN:HG2	1.97	0.43
2:H:81:GLN:HE21	2:H:82(A):ASN:ND2	2.16	0.43

Continued on next page...

Continued from previous page...

Atom-1	Atom-2	Interatomic distance (Å)	Clash overlap (Å)
1:L:37:LEU:HD13	1:L:86:TYR:CZ	2.54	0.43
2:H:216:SER:O	1:A:1:GLU:N	2.43	0.43
2:B:27:LEU:HD11	2:B:94:ILE:HD13	2.02	0.42
1:L:83:LEU:HD21	1:L:168:SER:HB3	2.01	0.42
1:L:13:VAL:HG21	1:L:19:ALA:HB2	2.02	0.42
2:H:125:ALA:O	2:H:228:ARG:NH1	2.52	0.42
1:A:150:ILE:HD11	1:A:179:LEU:HD21	2.02	0.42
2:B:83:ARG:HD3	2:B:85:GLU:OE2	2.20	0.42
1:L:181:LEU:CD2	1:L:181:LEU:N	2.83	0.42
2:B:200:PRO:CB	2:B:227:PRO:HG3	2.49	0.41
1:L:181:LEU:N	1:L:181:LEU:HD23	2.36	0.41
2:H:121:VAL:HG12	2:H:221:LYS:HG3	2.01	0.41
2:B:202:SER:OG	2:B:203:GLN:HG3	2.21	0.41
1:A:74:LYS:HB2	1:A:74:LYS:HE3	1.89	0.41
1:L:6:GLN:HB2	1:L:23:CYS:SG	2.61	0.41
1:L:125:LEU:O	1:L:183:LYS:HD2	2.20	0.40
1:L:77:ARG:NH1	1:L:77:ARG:CG	2.60	0.40
1:A:6:GLN:HG3	1:A:23:CYS:SG	2.61	0.40
2:H:22:CYS:HB3	2:H:78:LEU:HB3	2.03	0.40

There are no symmetry-related clashes.

5.3 Torsion angles [i](#)

5.3.1 Protein backbone [i](#)

In the following table, the Percentiles column shows the percent Ramachandran outliers of the chain as a percentile score with respect to all X-ray entries followed by that with respect to entries of similar resolution.

The Analysed column shows the number of residues for which the backbone conformation was analysed, and the total number of residues.

Mol	Chain	Analysed	Favoured	Allowed	Outliers	Percentiles	
1	A	217/219 (99%)	212 (98%)	4 (2%)	1 (0%)	31	20
1	L	217/219 (99%)	214 (99%)	2 (1%)	1 (0%)	31	20
2	B	216/218 (99%)	214 (99%)	1 (0%)	1 (0%)	31	20
2	H	216/218 (99%)	212 (98%)	3 (1%)	1 (0%)	31	20
All	All	866/874 (99%)	852 (98%)	10 (1%)	4 (0%)	31	20

All (4) Ramachandran outliers are listed below:

Mol	Chain	Res	Type
2	B	180	SER
1	L	76	SER
2	H	133	THR
1	A	68	GLY

5.3.2 Protein sidechains [i](#)

In the following table, the Percentiles column shows the percent sidechain outliers of the chain as a percentile score with respect to all X-ray entries followed by that with respect to entries of similar resolution.

The Analysed column shows the number of residues for which the sidechain conformation was analysed, and the total number of residues.

Mol	Chain	Analysed	Rotameric	Outliers	Percentiles	
1	A	196/196 (100%)	185 (94%)	11 (6%)	23	12
1	L	196/196 (100%)	188 (96%)	8 (4%)	33	23
2	B	191/191 (100%)	182 (95%)	9 (5%)	29	18
2	H	191/191 (100%)	180 (94%)	11 (6%)	22	12
All	All	774/774 (100%)	735 (95%)	39 (5%)	27	16

All (39) residues with a non-rotameric sidechain are listed below:

Mol	Chain	Res	Type
1	L	33	LEU
1	L	77	ARG
1	L	83	LEU
1	L	145	ASN
1	L	157	ASN
1	L	181	LEU
1	L	197	THR
1	L	202	THR
2	H	27	LEU
2	H	42	GLU
2	H	43	LYS
2	H	64	LYS
2	H	74	SER
2	H	83	ARG
2	H	93	LYS
2	H	108	LEU

Continued on next page...

Continued from previous page...

Mol	Chain	Res	Type
2	H	115	LYS
2	H	137	SER
2	H	163	SER
1	A	2	LEU
1	A	17	ASP
1	A	22	SER
1	A	33	LEU
1	A	83	LEU
1	A	122	SER
1	A	123	GLU
1	A	142	LYS
1	A	188	ARG
1	A	199	LYS
1	A	200	THR
2	B	42	GLU
2	B	93	LYS
2	B	105	GLN
2	B	108	LEU
2	B	136	SER
2	B	137	SER
2	B	140	LEU
2	B	217	THR
2	B	219	VAL

Some sidechains can be flipped to improve hydrogen bonding and reduce clashes. All (13) such sidechains are listed below:

Mol	Chain	Res	Type
1	L	27(D)	HIS
1	L	42	GLN
1	L	53	ASN
1	L	137	ASN
1	L	157	ASN
2	H	13	GLN
2	H	82(A)	ASN
1	A	42	GLN
1	A	137	ASN
1	A	189	HIS
1	A	190	ASN
2	B	82(A)	ASN
2	B	105	GLN

5.3.3 RNA [i](#)

There are no RNA molecules in this entry.

5.4 Non-standard residues in protein, DNA, RNA chains [i](#)

There are no non-standard protein/DNA/RNA residues in this entry.

5.5 Carbohydrates [i](#)

There are no carbohydrates in this entry.

5.6 Ligand geometry [i](#)

2 ligands are modelled in this entry.

In the following table, the Counts columns list the number of bonds (or angles) for which Mogul statistics could be retrieved, the number of bonds (or angles) that are observed in the model and the number of bonds (or angles) that are defined in the Chemical Component Dictionary. The Link column lists molecule types, if any, to which the group is linked. The Z score for a bond length (or angle) is the number of standard deviations the observed value is removed from the expected value. A bond length (or angle) with $|Z| > 2$ is considered an outlier worth inspection. RMSZ is the root-mean-square of all Z scores of the bond lengths (or angles).

Mol	Type	Chain	Res	Link	Bond lengths			Bond angles		
					Counts	RMSZ	# Z > 2	Counts	RMSZ	# Z > 2
3	DIK	B	500	2	19,22,23	0.55	0	21,27,29	1.07	1 (4%)
3	DIK	H	500	2	19,22,23	0.86	1 (5%)	21,27,29	1.38	3 (14%)

In the following table, the Chirals column lists the number of chiral outliers, the number of chiral centers analysed, the number of these observed in the model and the number defined in the Chemical Component Dictionary. Similar counts are reported in the Torsion and Rings columns. '-' means no outliers of that kind were identified.

Mol	Type	Chain	Res	Link	Chirals	Torsions	Rings
3	DIK	B	500	2	-	0/16/18/19	0/1/1/1
3	DIK	H	500	2	-	0/16/18/19	0/1/1/1

All (1) bond length outliers are listed below:

Mol	Chain	Res	Type	Atoms	Z	Observed(Å)	Ideal(Å)
3	H	500	DIK	C14-C13	2.89	1.56	1.51

All (4) bond angle outliers are listed below:

Mol	Chain	Res	Type	Atoms	Z	Observed(°)	Ideal(°)
3	H	500	DIK	C1-C2-C3	-4.34	116.85	125.32
3	B	500	DIK	C1-C2-C3	-3.48	118.53	125.32
3	H	500	DIK	C12-N1-C13	-2.85	122.45	127.48
3	H	500	DIK	C14-C13-N1	2.11	118.26	114.54

There are no chirality outliers.

There are no torsion outliers.

There are no ring outliers.

2 monomers are involved in 10 short contacts:

Mol	Chain	Res	Type	Clashes	Symm-Clashes
3	B	500	DIK	6	0
3	H	500	DIK	4	0

5.7 Other polymers [i](#)

There are no such residues in this entry.

5.8 Polymer linkage issues [i](#)

There are no chain breaks in this entry.

6 Fit of model and data [i](#)

6.1 Protein, DNA and RNA chains [i](#)

In the following table, the column labelled ‘#RSRZ > 2’ contains the number (and percentage) of RSRZ outliers, followed by percent RSRZ outliers for the chain as percentile scores relative to all X-ray entries and entries of similar resolution. The OWAB column contains the minimum, median, 95th percentile and maximum values of the occupancy-weighted average B-factor per residue. The column labelled ‘Q < 0.9’ lists the number of (and percentage) of residues with an average occupancy less than 0.9.

Mol	Chain	Analysed	<RSRZ>	#RSRZ>2	OWAB(Å ²)	Q<0.9
1	A	219/219 (100%)	0.49	12 (5%) 25 28	34, 43, 51, 67	0
1	L	219/219 (100%)	0.43	9 (4%) 37 41	29, 39, 50, 71	0
2	B	218/218 (100%)	0.36	8 (3%) 41 45	32, 39, 52, 58	0
2	H	218/218 (100%)	0.48	13 (5%) 22 25	27, 42, 52, 67	0
All	All	874/874 (100%)	0.44	42 (4%) 30 34	27, 41, 51, 71	0

All (42) RSRZ outliers are listed below:

Mol	Chain	Res	Type	RSRZ
2	H	133	THR	11.5
1	A	28	TYR	11.2
2	H	130	ASP	9.3
1	L	214	CYS	9.1
1	A	214	CYS	6.8
1	A	29	GLY	6.0
2	H	134	THR	5.8
2	H	129	GLY	5.7
2	H	128	CYS	5.2
1	L	213	GLU	4.9
1	A	202	THR	4.7
2	H	75	LYS	4.1
2	B	134	THR	3.6
2	H	74	SER	3.6
1	L	2	LEU	3.6
2	B	1	GLU	3.4
1	A	27(E)	SER	3.1
1	L	77	ARG	3.1
1	L	76	SER	2.9
1	A	2	LEU	2.9
2	H	77	ARG	2.9

Continued on next page...

Continued from previous page...

Mol	Chain	Res	Type	RSRZ
2	B	179	GLN	2.7
1	L	15	LEU	2.7
1	A	77	ARG	2.6
2	B	136	SER	2.6
1	L	163	TRP	2.5
2	B	37	VAL	2.5
1	A	169	LYS	2.4
2	H	29	PHE	2.4
2	B	168	SER	2.4
1	A	213	GLU	2.3
2	H	72	ASP	2.3
1	L	60	ASP	2.2
2	H	135	GLY	2.2
1	L	23	CYS	2.2
1	A	23	CYS	2.2
2	B	45	LEU	2.1
1	A	24	ARG	2.1
2	H	73	ASP	2.0
2	B	183	ASP	2.0
1	A	43	SER	2.0
2	H	52(B)	LYS	2.0

6.2 Non-standard residues in protein, DNA, RNA chains [i](#)

There are no non-standard protein/DNA/RNA residues in this entry.

6.3 Carbohydrates [i](#)

There are no carbohydrates in this entry.

6.4 Ligands [i](#)

In the following table, the Atoms column lists the number of modelled atoms in the group and the number defined in the chemical component dictionary. The B-factors column lists the minimum, median, 95th percentile and maximum values of B factors of atoms in the group. The column labelled 'Q< 0.9' lists the number of atoms with occupancy less than 0.9.

Mol	Type	Chain	Res	Atoms	RSCC	RSR	B-factors(Å ²)	Q<0.9
3	DIK	B	500	22/23	0.72	0.28	67,72,80,80	0
3	DIK	H	500	22/23	0.73	0.27	68,74,84,85	0

6.5 Other polymers

There are no such residues in this entry.