



Full wwPDB X-ray Structure Validation Report ⓘ

Oct 25, 2022 – 01:06 PM EDT

PDB ID : 7FPK
Title : PanDDA analysis group deposition – Aar2/RNaseH in complex with fragment P10E03 from the F2X-Universal Library
Authors : Barthel, T.; Wollenhaupt, J.; Lima, G.M.A.; Wahl, M.C.; Weiss, M.S.
Deposited on : 2022-08-26
Resolution : 1.59 Å(reported)

This is a Full wwPDB X-ray Structure Validation Report for a publicly released PDB entry.

We welcome your comments at validation@mail.wwpdb.org

A user guide is available at

<https://www.wwpdb.org/validation/2017/XrayValidationReportHelp>

with specific help available everywhere you see the ⓘ symbol.

The types of validation reports are described at

<http://www.wwpdb.org/validation/2017/FAQs#types>.

The following versions of software and data (see [references ⓘ](#)) were used in the production of this report:

MolProbity : 4.02b-467
Mogul : 1.8.5 (274361), CSD as541be (2020)
Xtriage (Phenix) : 1.13
EDS : 2.31.2
Percentile statistics : 20191225.v01 (using entries in the PDB archive December 25th 2019)
Refmac : 5.8.0158
CCP4 : 7.0.044 (Gargrove)
Ideal geometry (proteins) : Engh & Huber (2001)
Ideal geometry (DNA, RNA) : Parkinson et al. (1996)
Validation Pipeline (wwPDB-VP) : 2.31.2

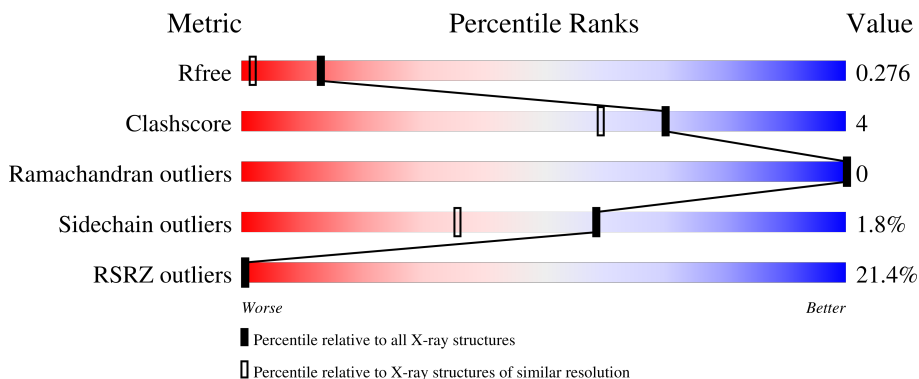
1 Overall quality at a glance

The following experimental techniques were used to determine the structure:

X-RAY DIFFRACTION

The reported resolution of this entry is 1.59 Å.

Percentile scores (ranging between 0-100) for global validation metrics of the entry are shown in the following graphic. The table shows the number of entries on which the scores are based.



Metric	Whole archive (#Entries)	Similar resolution (#Entries, resolution range(Å))
R_{free}	130704	3398 (1.60-1.60)
Clashscore	141614	3665 (1.60-1.60)
Ramachandran outliers	138981	3564 (1.60-1.60)
Sidechain outliers	138945	3563 (1.60-1.60)
RSRZ outliers	127900	3321 (1.60-1.60)

The table below summarises the geometric issues observed across the polymeric chains and their fit to the electron density. The red, orange, yellow and green segments of the lower bar indicate the fraction of residues that contain outliers for ≥ 3 , 2, 1 and 0 types of geometric quality criteria respectively. A grey segment represents the fraction of residues that are not modelled. The numeric value for each fraction is indicated below the corresponding segment, with a dot representing fractions $\leq 5\%$. The upper red bar (where present) indicates the fraction of residues that have poor fit to the electron density. The numeric value is given above the bar.

Mol	Chain	Length	Quality of chain
1	A	258	
2	B	308	

2 Entry composition

There are 4 unique types of molecules in this entry. The entry contains 9160 atoms, of which 4524 are hydrogens and 0 are deuteriums.

In the tables below, the ZeroOcc column contains the number of atoms modelled with zero occupancy, the AltConf column contains the number of residues with at least one atom in alternate conformation and the Trace column contains the number of residues modelled with at most 2 atoms.

- Molecule 1 is a protein called Pre-mRNA-splicing factor 8.

Mol	Chain	Residues	Atoms					ZeroOcc	AltConf	Trace	
			Total	C	H	N	O				S
1	A	237	4068	1287	2060	336	373	12	18	21	0

There are 3 discrepancies between the modelled and reference sequences:

Chain	Residue	Modelled	Actual	Comment	Reference
A	1833	GLY	-	expression tag	UNP P33334
A	1834	ALA	-	expression tag	UNP P33334
A	1835	MET	-	expression tag	UNP P33334

- Molecule 2 is a protein called A1 cistron-splicing factor AAR2.

Mol	Chain	Residues	Atoms					ZeroOcc	AltConf	Trace	
			Total	C	H	N	O				S
2	B	300	5044	1654	2464	421	485	20	0	17	0

There are 20 discrepancies between the modelled and reference sequences:

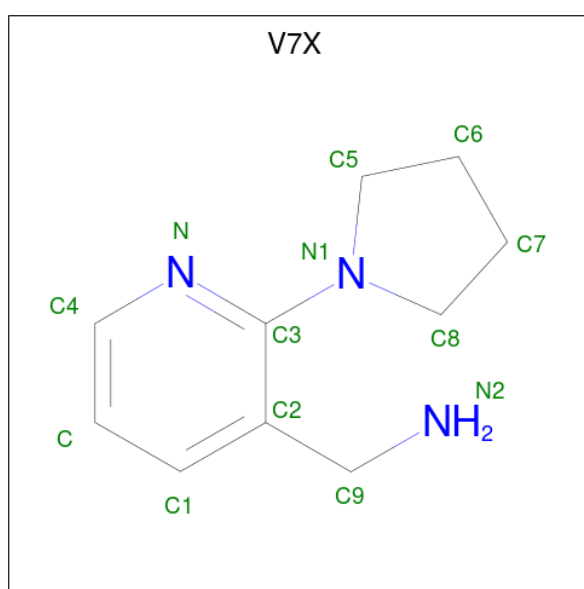
Chain	Residue	Modelled	Actual	Comment	Reference
B	-3	GLY	-	expression tag	UNP P32357
B	-2	ALA	-	expression tag	UNP P32357
B	-1	MET	-	expression tag	UNP P32357
B	0	ALA	-	expression tag	UNP P32357
B	166	SER	LEU	conflict	UNP P32357
B	167	SER	LYS	conflict	UNP P32357
B	?	-	LEU	deletion	UNP P32357
B	?	-	GLN	deletion	UNP P32357
B	?	-	LYS	deletion	UNP P32357
B	?	-	ALA	deletion	UNP P32357
B	?	-	GLY	deletion	UNP P32357
B	?	-	SER	deletion	UNP P32357
B	?	-	LYS	deletion	UNP P32357

Continued on next page...

Continued from previous page...

Chain	Residue	Modelled	Actual	Comment	Reference
B	?	-	MET	deletion	UNP P32357
B	?	-	GLU	deletion	UNP P32357
B	?	-	ALA	deletion	UNP P32357
B	?	-	LYS	deletion	UNP P32357
B	?	-	ASN	deletion	UNP P32357
B	?	-	GLU	deletion	UNP P32357
B	170	SER	ASP	conflict	UNP P32357

- Molecule 3 is 1-[2-(pyrrolidin-1-yl)pyridin-3-yl]methanamine (three-letter code: V7X) (formula: C₁₀H₁₅N₃).



Mol	Chain	Residues	Atoms		ZeroOcc	AltConf
			Total	C N		
3	B	1	13	10 3	0	0

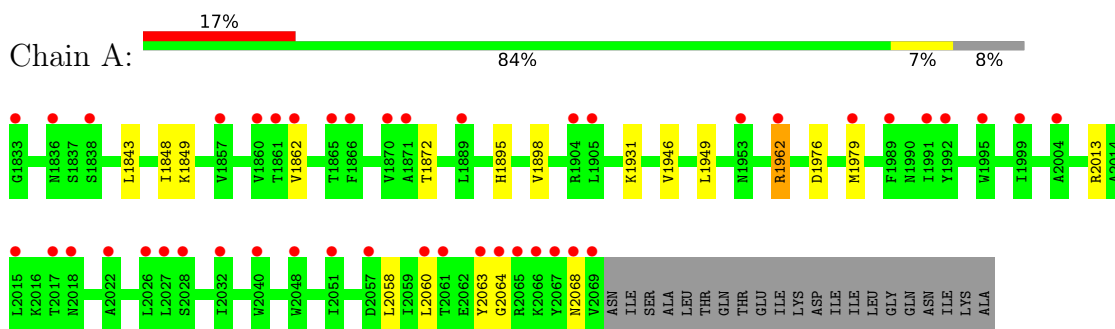
- Molecule 4 is water.

Mol	Chain	Residues	Atoms		ZeroOcc	AltConf
			Total	O		
4	A	24	24	24	0	0
4	B	11	11	11	0	0

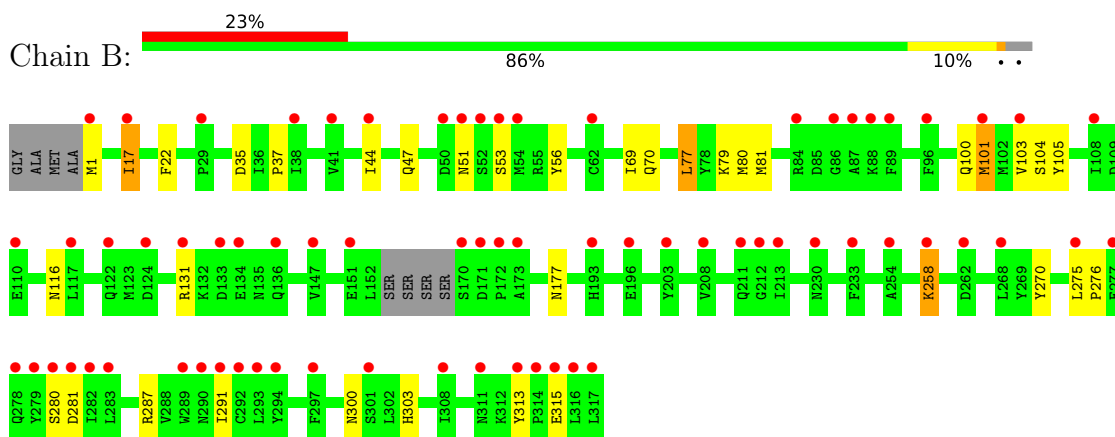
3 Residue-property plots [i](#)

These plots are drawn for all protein, RNA, DNA and oligosaccharide chains in the entry. The first graphic for a chain summarises the proportions of the various outlier classes displayed in the second graphic. The second graphic shows the sequence view annotated by issues in geometry and electron density. Residues are color-coded according to the number of geometric quality criteria for which they contain at least one outlier: green = 0, yellow = 1, orange = 2 and red = 3 or more. A red dot above a residue indicates a poor fit to the electron density ($RSRZ > 2$). Stretches of 2 or more consecutive residues without any outlier are shown as a green connector. Residues present in the sample, but not in the model, are shown in grey.

- Molecule 1: Pre-mRNA-splicing factor 8



- Molecule 2: A1 cistron-splicing factor AAR2



4 Data and refinement statistics

Property	Value	Source
Space group	C 1 2 1	Depositor
Cell constants a, b, c, α , β , γ	87.53Å 81.99Å 93.66Å 90.00° 108.22° 90.00°	Depositor
Resolution (Å)	44.48 – 1.59 44.53 – 1.59	Depositor EDS
% Data completeness (in resolution range)	96.0 (44.48-1.59) 96.2 (44.53-1.59)	Depositor EDS
R_{merge}	(Not available)	Depositor
R_{sym}	(Not available)	Depositor
$\langle I/\sigma(I) \rangle$ ¹	0.96 (at 1.58Å)	Xtrriage
Refinement program	PHENIX 1.17.1_3660	Depositor
R, R_{free}	0.232 , 0.270 0.241 , 0.276	Depositor DCC
R_{free} test set	2094 reflections (2.57%)	wwPDB-VP
Wilson B-factor (Å ²)	43.7	Xtrriage
Anisotropy	0.446	Xtrriage
Bulk solvent k_{sol} (e/Å ³), B_{sol} (Å ²)	0.40 , 54.8	EDS
L-test for twinning ²	$\langle L \rangle = 0.51$, $\langle L^2 \rangle = 0.34$	Xtrriage
Estimated twinning fraction	No twinning to report.	Xtrriage
F_o, F_c correlation	0.96	EDS
Total number of atoms	9160	wwPDB-VP
Average B, all atoms (Å ²)	71.0	wwPDB-VP

Xtrriage's analysis on translational NCS is as follows: *The largest off-origin peak in the Patterson function is 5.34% of the height of the origin peak. No significant pseudotranslation is detected.*

¹Intensities estimated from amplitudes.

²Theoretical values of $\langle |L| \rangle$, $\langle L^2 \rangle$ for acentric reflections are 0.5, 0.333 respectively for untwinned datasets, and 0.375, 0.2 for perfectly twinned datasets.

5 Model quality [i](#)

5.1 Standard geometry [i](#)

Bond lengths and bond angles in the following residue types are not validated in this section: V7X

The Z score for a bond length (or angle) is the number of standard deviations the observed value is removed from the expected value. A bond length (or angle) with $|Z| > 5$ is considered an outlier worth inspection. RMSZ is the root-mean-square of all Z scores of the bond lengths (or angles).

Mol	Chain	Bond lengths		Bond angles	
		RMSZ	# Z >5	RMSZ	# Z >5
1	A	0.58	0/2149	0.69	0/2911
2	B	0.60	0/2739	0.67	0/3699
All	All	0.59	0/4888	0.68	0/6610

There are no bond length outliers.

There are no bond angle outliers.

There are no chirality outliers.

There are no planarity outliers.

5.2 Too-close contacts [i](#)

In the following table, the Non-H and H(model) columns list the number of non-hydrogen atoms and hydrogen atoms in the chain respectively. The H(added) column lists the number of hydrogen atoms added and optimized by MolProbity. The Clashes column lists the number of clashes within the asymmetric unit, whereas Symm-Clashes lists symmetry-related clashes.

Mol	Chain	Non-H	H(model)	H(added)	Clashes	Symm-Clashes
1	A	2008	2060	1974	11	0
2	B	2580	2464	2398	21	3
3	B	13	0	0	1	0
4	A	24	0	0	1	0
4	B	11	0	0	1	2
All	All	4636	4524	4372	33	3

The all-atom clashscore is defined as the number of clashes found per 1000 atoms (including hydrogen atoms). The all-atom clashscore for this structure is 4.

All (33) close contacts within the same asymmetric unit are listed below, sorted by their clash magnitude.

Atom-1	Atom-2	Interatomic distance (Å)	Clash overlap (Å)
1:A:1962:ARG:O	1:A:2013:ARG:NH1	2.18	0.76
2:B:77:LEU:HD21	2:B:79:LYS:HE3	1.83	0.60
2:B:1:MET:HB3	2:B:35:ASP:HA	1.86	0.57
2:B:287:ARG:O	2:B:291:ILE:HD13	2.05	0.56
2:B:22:PHE:CE2	2:B:103:VAL:HG21	2.42	0.54
1:A:2064:GLY:O	1:A:2068:ASN:N	2.38	0.54
3:B:401:V7X:C5	3:B:401:V7X:C9	2.85	0.54
1:A:2060:LEU:O	1:A:2063:TYR:HB3	2.08	0.53
1:A:1976:ASP:HB3	4:A:2115:HOH:O	2.09	0.51
1:A:1946:VAL:O	1:A:1949:LEU:HG	2.10	0.51
2:B:70:GLN:HB3	2:B:81:MET:HE2	1.94	0.49
2:B:280:SER:HB3	2:B:313:TYR:CE1	2.47	0.49
2:B:300:ASN:O	2:B:303:HIS:NE2	2.46	0.48
1:A:2060:LEU:O	1:A:2063:TYR:N	2.47	0.48
1:A:1848:ILE:H	1:A:1931[A]:LYS:HZ2	1.62	0.47
2:B:69:ILE:HD13	2:B:80:MET:HA	1.97	0.47
2:B:1:MET:N	4:B:502:HOH:O	2.49	0.46
2:B:280:SER:HB3	2:B:313:TYR:CZ	2.51	0.46
1:A:1843:LEU:HA	1:A:1849:LYS:HD2	1.98	0.45
2:B:37:PRO:HD3	2:B:105:TYR:CD1	2.52	0.44
2:B:56:TYR:CZ	2:B:77:LEU:HB2	2.53	0.44
2:B:258:LYS:HD2	2:B:258:LYS:H	1.83	0.44
2:B:131:ARG:HH21	2:B:177[B]:ASN:ND2	2.16	0.43
1:A:1862:VAL:HG22	1:A:1872:THR:HG22	2.01	0.43
2:B:17:ILE:HD12	2:B:44[B]:ILE:HG13	2.00	0.43
2:B:116:ASN:ND2	2:B:270:TYR:CZ	2.87	0.43
2:B:22:PHE:CZ	2:B:103:VAL:HG21	2.54	0.43
2:B:51:ASN:OD1	2:B:53:SER:HB2	2.18	0.43
2:B:275:LEU:HD23	2:B:276:PRO:HD2	2.01	0.43
2:B:44[A]:ILE:O	2:B:44[A]:ILE:HG23	2.18	0.42
2:B:70:GLN:HB3	2:B:81:MET:CE	2.49	0.42
1:A:2058:LEU:C	1:A:2058:LEU:HD23	2.39	0.41
1:A:1895:HIS:O	1:A:1898[A]:VAL:HG22	2.20	0.41

All (3) symmetry-related close contacts are listed below. The label for Atom-2 includes the symmetry operator and encoded unit-cell translations to be applied.

Atom-1	Atom-2	Interatomic distance (Å)	Clash overlap (Å)
2:B:101:MET:CE	4:B:511:HOH:O[2_554]	1.83	0.37
2:B:101:MET:HE3	4:B:511:HOH:O[2_554]	1.41	0.19
2:B:100:GLN:OE1	2:B:104:SER:H[2_554]	1.56	0.04

5.3 Torsion angles [i](#)

5.3.1 Protein backbone [i](#)

In the following table, the Percentiles column shows the percent Ramachandran outliers of the chain as a percentile score with respect to all X-ray entries followed by that with respect to entries of similar resolution.

The Analysed column shows the number of residues for which the backbone conformation was analysed, and the total number of residues.

Mol	Chain	Analysed	Favoured	Allowed	Outliers	Percentiles	
1	A	258/258 (100%)	249 (96%)	9 (4%)	0	100	100
2	B	315/308 (102%)	302 (96%)	13 (4%)	0	100	100
All	All	573/566 (101%)	551 (96%)	22 (4%)	0	100	100

There are no Ramachandran outliers to report.

5.3.2 Protein sidechains [i](#)

In the following table, the Percentiles column shows the percent sidechain outliers of the chain as a percentile score with respect to all X-ray entries followed by that with respect to entries of similar resolution.

The Analysed column shows the number of residues for which the sidechain conformation was analysed, and the total number of residues.

Mol	Chain	Analysed	Rotameric	Outliers	Percentiles	
1	A	237/233 (102%)	233 (98%)	4 (2%)	60	38
2	B	294/284 (104%)	287 (98%)	7 (2%)	49	24
All	All	531/517 (103%)	520 (98%)	11 (2%)	59	29

All (11) residues with a non-rotameric sidechain are listed below:

Mol	Chain	Res	Type
1	A	1962	ARG
1	A	1979[A]	MET
1	A	1979[B]	MET
1	A	1979[C]	MET
2	B	17	ILE
2	B	47	GLN
2	B	77	LEU
2	B	101	MET

Continued on next page...

Continued from previous page...

Mol	Chain	Res	Type
2	B	258	LYS
2	B	281	ASP
2	B	315	GLU

Sometimes sidechains can be flipped to improve hydrogen bonding and reduce clashes. There are no such sidechains identified.

5.3.3 RNA [i](#)

There are no RNA molecules in this entry.

5.4 Non-standard residues in protein, DNA, RNA chains [i](#)

There are no non-standard protein/DNA/RNA residues in this entry.

5.5 Carbohydrates [i](#)

There are no monosaccharides in this entry.

5.6 Ligand geometry [i](#)

1 ligand is modelled in this entry.

In the following table, the Counts columns list the number of bonds (or angles) for which Mogul statistics could be retrieved, the number of bonds (or angles) that are observed in the model and the number of bonds (or angles) that are defined in the Chemical Component Dictionary. The Link column lists molecule types, if any, to which the group is linked. The Z score for a bond length (or angle) is the number of standard deviations the observed value is removed from the expected value. A bond length (or angle) with $|Z| > 2$ is considered an outlier worth inspection. RMSZ is the root-mean-square of all Z scores of the bond lengths (or angles).

Mol	Type	Chain	Res	Link	Bond lengths			Bond angles		
					Counts	RMSZ	# Z > 2	Counts	RMSZ	# Z > 2
3	V7X	B	401	-	14,14,14	1.91	3 (21%)	15,18,18	1.58	3 (20%)

In the following table, the Chirals column lists the number of chiral outliers, the number of chiral centers analysed, the number of these observed in the model and the number defined in the Chemical Component Dictionary. Similar counts are reported in the Torsion and Rings columns. '2' means no outliers of that kind were identified.

Mol	Type	Chain	Res	Link	Chirals	Torsions	Rings
3	V7X	B	401	-	-	4/5/13/13	0/2/2/2

All (3) bond length outliers are listed below:

Mol	Chain	Res	Type	Atoms	Z	Observed(Å)	Ideal(Å)
3	B	401	V7X	C2-C3	-5.44	1.32	1.42
3	B	401	V7X	C1-C2	-2.84	1.34	1.39
3	B	401	V7X	C-C1	-2.02	1.34	1.38

All (3) bond angle outliers are listed below:

Mol	Chain	Res	Type	Atoms	Z	Observed(°)	Ideal(°)
3	B	401	V7X	C8-N1-C3	-3.48	113.55	123.54
3	B	401	V7X	C2-C9-N2	-2.41	103.25	115.58
3	B	401	V7X	N-C3-N1	2.38	122.47	116.90

There are no chirality outliers.

All (4) torsion outliers are listed below:

Mol	Chain	Res	Type	Atoms
3	B	401	V7X	C2-C3-N1-C8
3	B	401	V7X	C2-C3-N1-C5
3	B	401	V7X	N-C3-N1-C5
3	B	401	V7X	N-C3-N1-C8

There are no ring outliers.

1 monomer is involved in 1 short contact:

Mol	Chain	Res	Type	Clashes	Symm-Clashes
3	B	401	V7X	1	0

5.7 Other polymers [\(i\)](#)

There are no such residues in this entry.

5.8 Polymer linkage issues [\(i\)](#)

There are no chain breaks in this entry.

6 Fit of model and data [i](#)

6.1 Protein, DNA and RNA chains [i](#)

In the following table, the column labelled ‘#RSRZ > 2’ contains the number (and percentage) of RSRZ outliers, followed by percent RSRZ outliers for the chain as percentile scores relative to all X-ray entries and entries of similar resolution. The OWAB column contains the minimum, median, 95th percentile and maximum values of the occupancy-weighted average B-factor per residue. The column labelled ‘Q < 0.9’ lists the number of (and percentage) of residues with an average occupancy less than 0.9.

Mol	Chain	Analysed	<RSRZ>	#RSRZ>2	OWAB(Å ²)	Q<0.9
1	A	237/258 (91%)	1.36	44 (18%) 1 1	45, 56, 92, 132	0
2	B	300/308 (97%)	1.45	71 (23%) 0 0	47, 62, 104, 120	0
All	All	537/566 (94%)	1.41	115 (21%) 0 0	45, 60, 101, 132	0

All (115) RSRZ outliers are listed below:

Mol	Chain	Res	Type	RSRZ
1	A	2069	VAL	14.7
1	A	2068	ASN	13.3
1	A	2064	GLY	9.8
2	B	87	ALA	9.2
2	B	316	LEU	9.0
2	B	53	SER	8.9
1	A	2063	TYR	8.2
2	B	317	LEU	8.0
1	A	1866	PHE	8.0
1	A	2060	LEU	6.9
1	A	2065	ARG	6.4
1	A	2066	LYS	5.7
2	B	170	SER	5.2
2	B	283	LEU	5.2
1	A	2061	THR	5.1
2	B	313	TYR	5.1
1	A	1865	THR	4.9
2	B	211[A]	GLN	4.8
1	A	1833	GLY	4.8
2	B	108	ILE	4.7
2	B	173	ALA	4.6
2	B	172	PRO	4.6
2	B	294	TYR	4.6
1	A	2028	SER	4.6

Continued on next page...

Continued from previous page...

Mol	Chain	Res	Type	RSRZ
2	B	277	GLU	4.6
1	A	2032	ILE	4.5
2	B	297	PHE	4.5
2	B	171	ASP	4.4
1	A	1860	VAL	4.4
1	A	2067	TYR	4.4
1	A	1836	ASN	4.4
2	B	280	SER	4.3
2	B	52	SER	4.2
2	B	279	TYR	4.2
2	B	315	GLU	4.2
2	B	281	ASP	4.2
2	B	292	CYS	4.2
2	B	278	GLN	4.2
2	B	213	ILE	3.9
1	A	1838	SER	3.8
2	B	212[A]	GLY	3.7
2	B	1	MET	3.6
1	A	2027	LEU	3.6
2	B	196	GLU	3.5
2	B	88	LYS	3.5
2	B	84	ARG	3.4
2	B	89	PHE	3.4
2	B	62	CYS	3.4
2	B	54[A]	MET	3.3
2	B	124	ASP	3.3
1	A	2057[A]	ASP	3.3
1	A	1904	ARG	3.2
2	B	254	ALA	3.2
1	A	2017[A]	THR	3.1
2	B	208	VAL	3.1
2	B	151	GLU	3.1
2	B	293	LEU	3.0
2	B	51	ASN	3.0
2	B	29	PRO	3.0
2	B	308	ILE	3.0
1	A	1861	THR	2.9
2	B	131	ARG	2.9
1	A	1862	VAL	2.9
2	B	314	PRO	2.8
2	B	203[A]	TYR	2.8
2	B	110	GLU	2.8

Continued on next page...

Continued from previous page...

Mol	Chain	Res	Type	RSRZ
2	B	147	VAL	2.8
1	A	1870	VAL	2.8
2	B	101	MET	2.8
2	B	86	GLY	2.7
2	B	258	LYS	2.7
1	A	1979[A]	MET	2.6
2	B	301	SER	2.6
2	B	311	ASN	2.6
1	A	1995	TRP	2.6
2	B	289	TRP	2.6
1	A	1889	LEU	2.6
2	B	193	HIS	2.6
2	B	233	PHE	2.5
1	A	1999	ILE	2.5
2	B	133	ASP	2.5
2	B	17	ILE	2.5
2	B	38	ILE	2.5
1	A	1962	ARG	2.5
1	A	2051	ILE	2.5
2	B	44[A]	ILE	2.4
2	B	282	ILE	2.4
2	B	275	LEU	2.4
1	A	2022	ALA	2.4
2	B	96	PHE	2.4
2	B	50	ASP	2.4
1	A	2018[A]	ASN	2.3
2	B	122[A]	GLN	2.3
1	A	1953	ASN	2.3
1	A	2004	ALA	2.3
1	A	1857	VAL	2.3
2	B	41[A]	VAL	2.2
2	B	134	GLU	2.2
1	A	2048	TRP	2.2
2	B	262	ASP	2.2
1	A	1871	ALA	2.2
2	B	268	LEU	2.2
1	A	1992	TYR	2.2
1	A	2040	TRP	2.2
1	A	1991	ILE	2.1
2	B	291	ILE	2.1
2	B	103	VAL	2.1
1	A	2026	LEU	2.1

Continued on next page...

Continued from previous page...

Mol	Chain	Res	Type	RSRZ
1	A	1905	LEU	2.1
2	B	117	LEU	2.1
2	B	136	GLN	2.1
1	A	2015	LEU	2.1
2	B	230[A]	ASN	2.0
1	A	1989	PHE	2.0
2	B	290	ASN	2.0

6.2 Non-standard residues in protein, DNA, RNA chains [i](#)

There are no non-standard protein/DNA/RNA residues in this entry.

6.3 Carbohydrates [i](#)

There are no monosaccharides in this entry.

6.4 Ligands [i](#)

In the following table, the Atoms column lists the number of modelled atoms in the group and the number defined in the chemical component dictionary. The B-factors column lists the minimum, median, 95th percentile and maximum values of B factors of atoms in the group. The column labelled 'Q< 0.9' lists the number of atoms with occupancy less than 0.9.

Mol	Type	Chain	Res	Atoms	RSCC	RSR	B-factors(Å ²)	Q<0.9
3	V7X	B	401	13/13	0.92	0.28	20,20,20,20	13

6.5 Other polymers [i](#)

There are no such residues in this entry.