



# Full wwPDB X-ray Structure Validation Report ⓘ

Aug 1, 2024 – 04:46 PM EDT

PDB ID : 8FRV  
Title : LSD1-CoREST in complex with T17, short soaking  
Authors : Caroli, J.; Mattevi, A.  
Deposited on : 2023-01-09  
Resolution : 2.72 Å(reported)

This is a Full wwPDB X-ray Structure Validation Report for a publicly released PDB entry.

We welcome your comments at [validation@mail.wwpdb.org](mailto:validation@mail.wwpdb.org)

A user guide is available at

<https://www.wwpdb.org/validation/2017/XrayValidationReportHelp>

with specific help available everywhere you see the ⓘ symbol.

The types of validation reports are described at

<http://www.wwpdb.org/validation/2017/FAQs#types>.

---

The following versions of software and data (see [references ⓘ](#)) were used in the production of this report:

MolProbity : 4.02b-467  
Mogul : 1.8.5 (274361), CSD as541be (2020)  
Xtriage (Phenix) : 1.13  
EDS : 2.37.1  
buster-report : 1.1.7 (2018)  
Percentile statistics : 20191225.v01 (using entries in the PDB archive December 25th 2019)  
Refmac : 5.8.0158  
CCP4 : 7.0.044 (Gargrove)  
Ideal geometry (proteins) : Engh & Huber (2001)  
Ideal geometry (DNA, RNA) : Parkinson et al. (1996)  
Validation Pipeline (wwPDB-VP) : 2.37.1

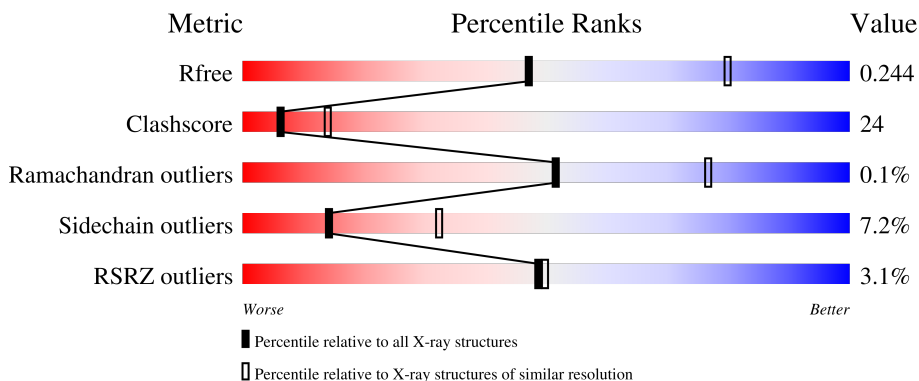
# 1 Overall quality at a glance

The following experimental techniques were used to determine the structure:

*X-RAY DIFFRACTION*

The reported resolution of this entry is 2.72 Å.

Percentile scores (ranging between 0-100) for global validation metrics of the entry are shown in the following graphic. The table shows the number of entries on which the scores are based.



Metric	Whole archive (#Entries)	Similar resolution (#Entries, resolution range(Å))
$R_{free}$	130704	3359 (2.74-2.70)
Clashscore	141614	3686 (2.74-2.70)
Ramachandran outliers	138981	3622 (2.74-2.70)
Sidechain outliers	138945	3623 (2.74-2.70)
RSRZ outliers	127900	3276 (2.74-2.70)

The table below summarises the geometric issues observed across the polymeric chains and their fit to the electron density. The red, orange, yellow and green segments of the lower bar indicate the fraction of residues that contain outliers for  $\geq 3$ , 2, 1 and 0 types of geometric quality criteria respectively. A grey segment represents the fraction of residues that are not modelled. The numeric value for each fraction is indicated below the corresponding segment, with a dot representing fractions  $\leq 5\%$ . The upper red bar (where present) indicates the fraction of residues that have poor fit to the electron density. The numeric value is given above the bar.

Mol	Chain	Length	Quality of chain
1	A	871	 2% 52% 22% 24%
2	B	144	 6% 53% 31% 7% 8%

## 2 Entry composition

There are 3 unique types of molecules in this entry. The entry contains 6361 atoms, of which 0 are hydrogens and 0 are deuteriums.

In the tables below, the ZeroOcc column contains the number of atoms modelled with zero occupancy, the AltConf column contains the number of residues with at least one atom in alternate conformation and the Trace column contains the number of residues modelled with at most 2 atoms.

- Molecule 1 is a protein called Lysine-specific histone demethylase 1A.

Mol	Chain	Residues	Atoms					ZeroOcc	AltConf	Trace
			Total	C	N	O	S			
1	A	666	5217	3324	906	967	20	0	0	0

There are 19 discrepancies between the modelled and reference sequences:

Chain	Residue	Modelled	Actual	Comment	Reference
A	-18	GLY	-	expression tag	UNP O60341
A	-17	SER	-	expression tag	UNP O60341
A	-16	SER	-	expression tag	UNP O60341
A	-15	HIS	-	expression tag	UNP O60341
A	-14	HIS	-	expression tag	UNP O60341
A	-13	HIS	-	expression tag	UNP O60341
A	-12	HIS	-	expression tag	UNP O60341
A	-11	HIS	-	expression tag	UNP O60341
A	-10	HIS	-	expression tag	UNP O60341
A	-9	SER	-	expression tag	UNP O60341
A	-8	SER	-	expression tag	UNP O60341
A	-7	GLY	-	expression tag	UNP O60341
A	-6	LEU	-	expression tag	UNP O60341
A	-5	VAL	-	expression tag	UNP O60341
A	-4	PRO	-	expression tag	UNP O60341
A	-3	ARG	-	expression tag	UNP O60341
A	-2	GLY	-	expression tag	UNP O60341
A	-1	SER	-	expression tag	UNP O60341
A	0	HIS	-	expression tag	UNP O60341

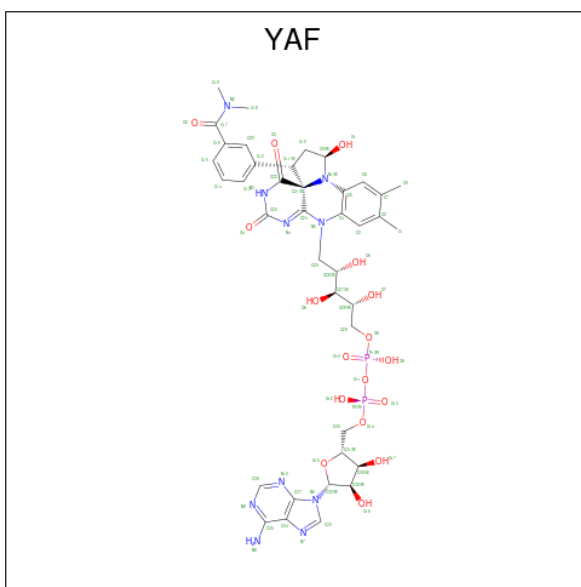
- Molecule 2 is a protein called REST corepressor 1.

Mol	Chain	Residues	Atoms					ZeroOcc	AltConf	Trace
			Total	C	N	O	S			
2	B	133	1076	676	194	203	3	0	0	0

There are 8 discrepancies between the modelled and reference sequences:

Chain	Residue	Modelled	Actual	Comment	Reference
B	297	GLY	-	expression tag	UNP Q9UKL0
B	298	PRO	-	expression tag	UNP Q9UKL0
B	299	LEU	-	expression tag	UNP Q9UKL0
B	300	GLY	-	expression tag	UNP Q9UKL0
B	301	SER	-	expression tag	UNP Q9UKL0
B	302	PRO	-	expression tag	UNP Q9UKL0
B	303	GLU	-	expression tag	UNP Q9UKL0
B	304	PHE	-	expression tag	UNP Q9UKL0

- Molecule 3 is [(2R,3S,4R,5R)-5-(6-amino-9H-purin-9-yl)-3,4-dihydroxyoxolan-2-yl]methyl (2R,3S,4S)-5-[(1R,3S,3aS,13R)-3-[3-(dimethylcarbamoyl)phenyl]-1-hydroxy-10,11-dimethyl-4,6-dioxo-2,3,5,6-tetrahydro-1H-benzo[g]pyrrolo[2,1-e]pteridin-8(4H)-yl]-2,3,4-trihydroxypentyl dihydrogen diphosphate (non-preferred name) (three-letter code: YAF) (formula: C<sub>39</sub>H<sub>48</sub>N<sub>10</sub>O<sub>17</sub>P<sub>2</sub>) (labeled as "Ligand of Interest" by depositor).

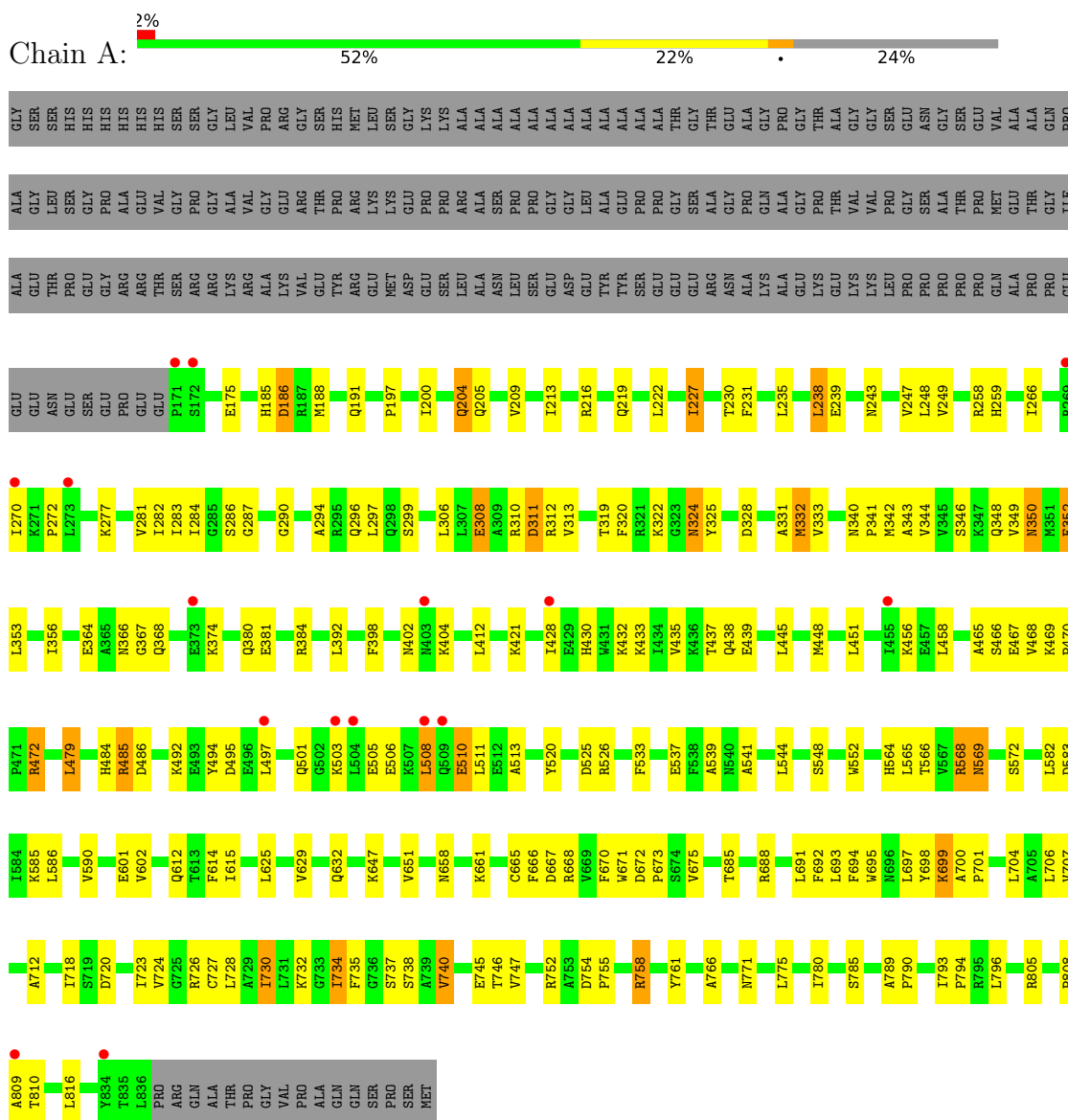


Mol	Chain	Residues	Atoms				ZeroOcc	AltConf	
			Total	C	N	O			P
3	A	1	68	39	10	17	2	0	0

### 3 Residue-property plots i

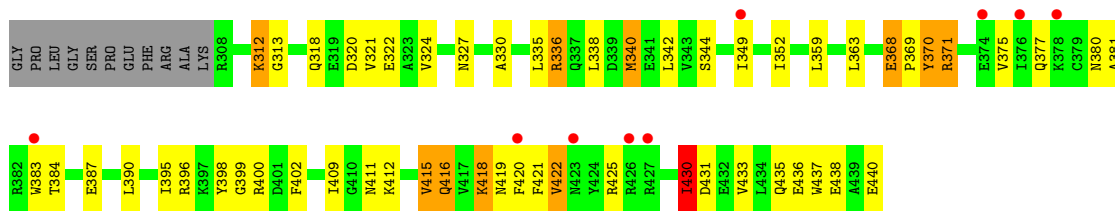
These plots are drawn for all protein, RNA, DNA and oligosaccharide chains in the entry. The first graphic for a chain summarises the proportions of the various outlier classes displayed in the second graphic. The second graphic shows the sequence view annotated by issues in geometry and electron density. Residues are color-coded according to the number of geometric quality criteria for which they contain at least one outlier: green = 0, yellow = 1, orange = 2 and red = 3 or more. A red dot above a residue indicates a poor fit to the electron density ( $RSRZ > 2$ ). Stretches of 2 or more consecutive residues without any outlier are shown as a green connector. Residues present in the sample, but not in the model, are shown in grey.

• Molecule 1: Lysine-specific histone demethylase 1A



• Molecule 2: REST corepressor 1





## 4 Data and refinement statistics

Property	Value	Source
Space group	I 2 2 2	Depositor
Cell constants a, b, c, $\alpha$ , $\beta$ , $\gamma$	118.68Å 178.66Å 235.70Å 90.00° 90.00° 90.00°	Depositor
Resolution (Å)	59.34 – 2.72 59.34 – 2.72	Depositor EDS
% Data completeness (in resolution range)	91.8 (59.34-2.72) 91.8 (59.34-2.72)	Depositor EDS
$R_{merge}$	(Not available)	Depositor
$R_{sym}$	(Not available)	Depositor
$\langle I/\sigma(I) \rangle$ <sup>1</sup>	0.96 (at 2.73Å)	Xtrriage
Refinement program	PHENIX 1.18.2_3874	Depositor
R, $R_{free}$	0.219 , 0.248 0.221 , 0.244	Depositor DCC
$R_{free}$ test set	1839 reflections (2.97%)	wwPDB-VP
Wilson B-factor (Å <sup>2</sup> )	92.4	Xtrriage
Anisotropy	0.325	Xtrriage
Bulk solvent $k_{sol}$ (e/Å <sup>3</sup> ), $B_{sol}$ (Å <sup>2</sup> )	0.33 , 73.5	EDS
L-test for twinning <sup>2</sup>	$\langle  L  \rangle = 0.49$ , $\langle L^2 \rangle = 0.32$	Xtrriage
Estimated twinning fraction	No twinning to report.	Xtrriage
$F_o, F_c$ correlation	0.95	EDS
Total number of atoms	6361	wwPDB-VP
Average B, all atoms (Å <sup>2</sup> )	98.0	wwPDB-VP

Xtrriage's analysis on translational NCS is as follows: *The largest off-origin peak in the Patterson function is 3.10% of the height of the origin peak. No significant pseudotranslation is detected.*

<sup>1</sup>Intensities estimated from amplitudes.

<sup>2</sup>Theoretical values of  $\langle |L| \rangle$ ,  $\langle L^2 \rangle$  for acentric reflections are 0.5, 0.333 respectively for untwinned datasets, and 0.375, 0.2 for perfectly twinned datasets.

## 5 Model quality [i](#)

### 5.1 Standard geometry [i](#)

Bond lengths and bond angles in the following residue types are not validated in this section: YAF

The Z score for a bond length (or angle) is the number of standard deviations the observed value is removed from the expected value. A bond length (or angle) with  $|Z| > 5$  is considered an outlier worth inspection. RMSZ is the root-mean-square of all Z scores of the bond lengths (or angles).

Mol	Chain	Bond lengths		Bond angles	
		RMSZ	# Z  >5	RMSZ	# Z  >5
1	A	0.73	1/5331 (0.0%)	0.81	2/7232 (0.0%)
2	B	0.71	0/1091	0.88	0/1471
All	All	0.73	1/6422 (0.0%)	0.82	2/8703 (0.0%)

All (1) bond length outliers are listed below:

Mol	Chain	Res	Type	Atoms	Z	Observed(Å)	Ideal(Å)
1	A	308	GLU	CD-OE2	-5.24	1.19	1.25

All (2) bond angle outliers are listed below:

Mol	Chain	Res	Type	Atoms	Z	Observed(°)	Ideal(°)
1	A	308	GLU	N-CA-CB	-5.34	100.99	110.60
1	A	308	GLU	CB-CG-CD	-5.10	100.43	114.20

There are no chirality outliers.

There are no planarity outliers.

### 5.2 Too-close contacts [i](#)

In the following table, the Non-H and H(model) columns list the number of non-hydrogen atoms and hydrogen atoms in the chain respectively. The H(added) column lists the number of hydrogen atoms added and optimized by MolProbity. The Clashes column lists the number of clashes within the asymmetric unit, whereas Symm-Clashes lists symmetry-related clashes.

Mol	Chain	Non-H	H(model)	H(added)	Clashes	Symm-Clashes
1	A	5217	0	5252	243	2
2	B	1076	0	1091	101	1
3	A	68	0	0	3	0

*Continued on next page...*



*Continued from previous page...*

Mol	Chain	Non-H	H(model)	H(added)	Clashes	Symm-Clashes
All	All	6361	0	6343	309	2

The all-atom clashscore is defined as the number of clashes found per 1000 atoms (including hydrogen atoms). The all-atom clashscore for this structure is 24.

All (309) close contacts within the same asymmetric unit are listed below, sorted by their clash magnitude.

Atom-1	Atom-2	Interatomic distance (Å)	Clash overlap (Å)
1:A:539:ALA:O	3:A:901:YAF:C19	1.66	1.43
1:A:670:PHE:CZ	1:A:740:VAL:CG2	2.02	1.41
1:A:332:MET:SD	1:A:661:LYS:NZ	2.18	1.17
1:A:670:PHE:CE2	1:A:740:VAL:HG22	1.81	1.15
1:A:568:ARG:HH12	1:A:698:TYR:C	1.51	1.13
1:A:670:PHE:CZ	1:A:740:VAL:HG21	1.83	1.13
1:A:437:THR:CG2	1:A:508:LEU:HD21	1.79	1.12
1:A:670:PHE:CE1	1:A:740:VAL:CG2	2.32	1.12
1:A:384:ARG:NH2	2:B:312:LYS:O	1.85	1.06
1:A:670:PHE:CZ	1:A:740:VAL:HG22	1.87	1.05
1:A:670:PHE:CE1	1:A:740:VAL:HG23	1.92	1.04
1:A:437:THR:HG22	1:A:508:LEU:HD21	1.39	1.00
1:A:793:ILE:HD12	1:A:793:ILE:H	1.24	1.00
1:A:384:ARG:NH1	2:B:312:LYS:O	1.94	1.00
1:A:437:THR:CG2	1:A:508:LEU:CD2	2.39	1.00
1:A:437:THR:HG21	1:A:508:LEU:CD2	1.92	0.99
1:A:670:PHE:CE2	1:A:740:VAL:CG2	2.41	0.98
1:A:568:ARG:NH1	1:A:699:LYS:N	2.14	0.96
1:A:568:ARG:NH1	1:A:698:TYR:C	2.18	0.95
1:A:325:TYR:CE2	1:A:665:CYS:HB3	2.03	0.93
1:A:670:PHE:CD1	1:A:740:VAL:HG23	2.06	0.91
1:A:384:ARG:CZ	2:B:312:LYS:O	2.17	0.91
1:A:374:LYS:NZ	1:A:525:ASP:OD2	2.03	0.90
1:A:332:MET:CE	1:A:661:LYS:NZ	2.35	0.90
1:A:566:THR:HG21	1:A:697:LEU:HD22	1.53	0.90
1:A:670:PHE:CE1	1:A:740:VAL:HG21	2.04	0.90
1:A:568:ARG:HH12	1:A:699:LYS:N	1.67	0.89
1:A:438:GLN:OE1	1:A:508:LEU:HD12	1.73	0.88
2:B:396:ARG:HG3	2:B:396:ARG:HH11	1.38	0.88
1:A:438:GLN:OE1	1:A:508:LEU:CD1	2.21	0.87
2:B:387:GLU:OE1	2:B:411:ASN:ND2	2.06	0.86
1:A:352:GLU:OE1	1:A:699:LYS:NZ	2.09	0.85
1:A:332:MET:CE	1:A:661:LYS:HZ1	1.87	0.85

*Continued on next page...*

*Continued from previous page...*

Atom-1	Atom-2	Interatomic distance (Å)	Clash overlap (Å)
1:A:437:THR:HG21	1:A:508:LEU:HD23	1.55	0.84
1:A:350:ASN:O	1:A:350:ASN:ND2	2.11	0.83
2:B:336:ARG:HH21	2:B:336:ARG:HG3	1.42	0.82
2:B:371:ARG:HG3	2:B:371:ARG:HH11	1.42	0.82
1:A:332:MET:HE2	1:A:661:LYS:HZ1	1.45	0.81
2:B:425:ARG:HA	2:B:430:ILE:HG13	1.63	0.80
1:A:661:LYS:HD3	1:A:704:LEU:HD21	1.64	0.80
1:A:758:ARG:HG2	1:A:758:ARG:HH11	1.47	0.80
1:A:566:THR:HG21	1:A:697:LEU:CD2	2.13	0.79
1:A:186:ASP:N	1:A:186:ASP:OD1	2.13	0.78
1:A:685:THR:O	1:A:688:ARG:HG2	1.83	0.78
2:B:415:VAL:O	2:B:419:ASN:ND2	2.16	0.78
2:B:335:LEU:N	2:B:335:LEU:HD23	1.99	0.77
2:B:400:ARG:NH1	2:B:438:GLU:OE2	2.17	0.77
1:A:456:LYS:HA	2:B:370:TYR:CE2	2.20	0.77
1:A:569:ASN:OD1	1:A:569:ASN:N	2.17	0.77
1:A:754:ASP:OD1	1:A:755:PRO:HD2	1.86	0.76
1:A:312:ARG:HH11	1:A:312:ARG:HG3	1.50	0.75
1:A:511:LEU:N	1:A:511:LEU:HD23	2.00	0.75
2:B:338:LEU:N	2:B:338:LEU:HD23	2.01	0.75
1:A:428:ILE:HG12	2:B:342:LEU:HD12	1.68	0.75
1:A:312:ARG:HG3	1:A:312:ARG:NH1	2.02	0.75
1:A:324:ASN:H	1:A:324:ASN:HD22	1.35	0.74
2:B:336:ARG:HG3	2:B:336:ARG:NH2	1.98	0.73
1:A:670:PHE:CZ	1:A:740:VAL:HG23	2.08	0.73
1:A:188:MET:CE	1:A:200:ILE:HB	2.20	0.72
1:A:227:ILE:HG12	1:A:227:ILE:O	1.87	0.72
3:A:901:YAF:O3	3:A:901:YAF:O1	2.07	0.72
2:B:312:LYS:CE	2:B:312:LYS:HA	2.19	0.72
2:B:396:ARG:O	2:B:437:TRP:HD1	1.74	0.71
1:A:353:LEU:HB3	1:A:565:LEU:HD23	1.73	0.70
1:A:456:LYS:HG3	2:B:370:TYR:CE2	2.26	0.70
2:B:399:GLY:N	2:B:437:TRP:NE1	2.39	0.70
1:A:286:SER:HB3	1:A:308:GLU:OE1	1.92	0.69
1:A:691:LEU:HD22	1:A:727:CYS:SG	2.31	0.69
1:A:485:ARG:HD2	1:A:485:ARG:C	2.12	0.69
1:A:793:ILE:HD12	1:A:793:ILE:N	2.05	0.68
1:A:188:MET:HE1	1:A:200:ILE:HB	1.76	0.68
1:A:322:LYS:HE2	1:A:745:GLU:OE2	1.94	0.68
1:A:384:ARG:HH22	2:B:312:LYS:C	1.97	0.67
1:A:343:ALA:O	1:A:346:SER:OG	2.12	0.67

*Continued on next page...*

*Continued from previous page...*

Atom-1	Atom-2	Interatomic distance (Å)	Clash overlap (Å)
1:A:456:LYS:HG3	2:B:370:TYR:OH	1.95	0.67
1:A:437:THR:HG22	1:A:508:LEU:CD2	2.14	0.67
2:B:381:ALA:HA	2:B:416:GLN:OE1	1.95	0.66
2:B:327:ASN:OD1	2:B:330:ALA:N	2.28	0.66
1:A:793:ILE:H	1:A:793:ILE:CD1	1.98	0.65
1:A:384:ARG:NH2	2:B:313:GLY:HA3	2.12	0.65
1:A:320:PHE:CD1	1:A:747:VAL:HG21	2.32	0.65
1:A:322:LYS:HE2	1:A:745:GLU:CD	2.17	0.64
1:A:352:GLU:HB3	1:A:568:ARG:HB3	1.80	0.64
1:A:332:MET:HG2	1:A:333:VAL:HG23	1.78	0.64
2:B:421:PHE:O	2:B:425:ARG:HB2	1.98	0.63
2:B:396:ARG:HG3	2:B:396:ARG:NH1	2.13	0.63
1:A:438:GLN:OE1	1:A:508:LEU:HD11	1.99	0.63
2:B:312:LYS:HA	2:B:312:LYS:HE2	1.80	0.62
1:A:188:MET:HE1	1:A:200:ILE:CA	2.28	0.62
2:B:430:ILE:O	2:B:433:VAL:N	2.33	0.62
1:A:672:ASP:HB3	1:A:675:VAL:HG22	1.80	0.62
1:A:693:LEU:HD12	1:A:694:PHE:H	1.64	0.62
2:B:399:GLY:HA3	2:B:437:TRP:CE2	2.34	0.61
1:A:188:MET:CE	1:A:200:ILE:CB	2.78	0.61
1:A:428:ILE:HG13	2:B:342:LEU:CD1	2.31	0.61
1:A:428:ILE:CG1	2:B:342:LEU:HD12	2.30	0.61
2:B:430:ILE:O	2:B:433:VAL:HB	2.01	0.60
1:A:188:MET:HE1	1:A:200:ILE:CB	2.31	0.60
2:B:383:TRP:CH2	2:B:420:PHE:CD1	2.89	0.60
1:A:320:PHE:CE1	1:A:747:VAL:HG21	2.36	0.60
1:A:428:ILE:CG1	2:B:342:LEU:CD1	2.80	0.60
1:A:670:PHE:CG	1:A:740:VAL:HG23	2.36	0.60
1:A:724:VAL:O	1:A:728:LEU:HG	2.01	0.60
1:A:468:VAL:HG12	1:A:468:VAL:O	2.02	0.60
1:A:726:ARG:O	1:A:730:ILE:HG13	2.02	0.59
1:A:428:ILE:HG13	2:B:342:LEU:HD13	1.83	0.59
1:A:384:ARG:HH22	2:B:313:GLY:HA3	1.67	0.59
1:A:311:ASP:OD1	1:A:311:ASP:N	2.16	0.59
1:A:384:ARG:HH22	2:B:313:GLY:CA	2.15	0.59
2:B:399:GLY:CA	2:B:437:TRP:CE2	2.86	0.59
1:A:324:ASN:HD22	1:A:324:ASN:N	2.01	0.58
1:A:495:ASP:OD2	2:B:371:ARG:NH2	2.33	0.58
1:A:658:ASN:ND2	1:A:752:ARG:HB2	2.18	0.58
1:A:281:VAL:HG11	1:A:297:LEU:HD13	1.84	0.58
1:A:266:ILE:N	1:A:348:GLN:OE1	2.24	0.58

*Continued on next page...*

*Continued from previous page...*

Atom-1	Atom-2	Interatomic distance (Å)	Clash overlap (Å)
1:A:568:ARG:HH11	1:A:698:TYR:HA	1.68	0.58
2:B:371:ARG:HH11	2:B:371:ARG:CG	2.11	0.58
2:B:399:GLY:N	2:B:437:TRP:CD1	2.72	0.57
1:A:286:SER:OG	1:A:313:VAL:HG12	2.05	0.57
1:A:456:LYS:HG3	2:B:370:TYR:CZ	2.40	0.57
2:B:395:ILE:HG22	2:B:433:VAL:CG1	2.35	0.57
1:A:695:TRP:HE1	1:A:706:LEU:HD13	1.69	0.57
2:B:370:TYR:N	2:B:370:TYR:HD1	2.03	0.56
1:A:732:LYS:HD2	1:A:737:SER:HA	1.87	0.56
2:B:370:TYR:N	2:B:370:TYR:CD1	2.72	0.56
1:A:485:ARG:NH2	2:B:398:TYR:HE2	2.02	0.56
2:B:396:ARG:HH11	2:B:396:ARG:CG	2.12	0.56
1:A:287:GLY:O	1:A:290:GLY:N	2.38	0.56
1:A:700:ALA:HB1	1:A:701:PRO:HD2	1.88	0.56
1:A:421:LYS:NZ	2:B:320:ASP:OD2	2.38	0.55
1:A:485:ARG:HD2	1:A:485:ARG:O	2.06	0.55
1:A:758:ARG:HH11	1:A:758:ARG:CG	2.13	0.55
1:A:332:MET:CE	1:A:661:LYS:HZ3	2.08	0.55
1:A:486:ASP:OD1	2:B:398:TYR:OH	2.18	0.55
1:A:691:LEU:CD2	1:A:727:CYS:SG	2.93	0.55
2:B:312:LYS:CE	2:B:312:LYS:CA	2.85	0.55
1:A:282:ILE:HG21	1:A:602:VAL:HG21	1.88	0.54
1:A:456:LYS:HG3	2:B:370:TYR:HE2	1.71	0.54
2:B:419:ASN:O	2:B:422:VAL:HG23	2.07	0.54
1:A:188:MET:HE3	1:A:200:ILE:HB	1.89	0.54
1:A:325:TYR:HE2	1:A:665:CYS:HB3	1.71	0.54
1:A:632:GLN:NE2	1:A:758:ARG:HH21	2.05	0.53
1:A:356:ILE:HG13	1:A:566:THR:HG23	1.91	0.53
1:A:344:VAL:O	1:A:348:GLN:HG3	2.09	0.53
1:A:734:ILE:HD12	1:A:734:ILE:N	2.24	0.53
1:A:568:ARG:NH1	1:A:698:TYR:CA	2.71	0.53
2:B:369:PRO:HB2	2:B:370:TYR:HD1	1.74	0.53
2:B:418:LYS:O	2:B:421:PHE:HB2	2.09	0.52
1:A:325:TYR:CD2	1:A:665:CYS:SG	3.03	0.52
1:A:754:ASP:OD1	1:A:755:PRO:CD	2.56	0.52
1:A:437:THR:CG2	1:A:508:LEU:HD23	2.24	0.52
1:A:734:ILE:N	1:A:734:ILE:CD1	2.73	0.52
1:A:501:GLN:O	1:A:505:GLU:HG3	2.09	0.51
2:B:383:TRP:CZ3	2:B:420:PHE:CD1	2.98	0.51
1:A:205:GLN:OE1	1:A:205:GLN:HA	2.11	0.51
1:A:761:TYR:CD1	1:A:809:ALA:HB1	2.46	0.51

*Continued on next page...*

*Continued from previous page...*

Atom-1	Atom-2	Interatomic distance (Å)	Clash overlap (Å)
1:A:451:LEU:HD23	1:A:494:TYR:HB2	1.91	0.51
1:A:510:GLU:HG2	1:A:511:LEU:HD23	1.92	0.51
1:A:695:TRP:NE1	1:A:706:LEU:HD13	2.26	0.51
1:A:456:LYS:CA	2:B:370:TYR:CE2	2.93	0.51
1:A:456:LYS:CG	2:B:370:TYR:CE2	2.94	0.51
1:A:568:ARG:NE	1:A:699:LYS:HE3	2.25	0.51
1:A:758:ARG:CG	1:A:758:ARG:NH1	2.73	0.51
1:A:231:PHE:HE1	1:A:249:VAL:HG12	1.75	0.51
2:B:340:MET:N	2:B:340:MET:SD	2.84	0.50
1:A:445:LEU:HB2	2:B:359:LEU:HD12	1.93	0.50
1:A:286:SER:OG	1:A:286:SER:O	2.28	0.50
1:A:701:PRO:HG2	1:A:701:PRO:O	2.11	0.50
1:A:352:GLU:HB3	1:A:568:ARG:CB	2.41	0.50
2:B:371:ARG:HG3	2:B:371:ARG:NH1	2.20	0.50
2:B:420:PHE:CD2	2:B:420:PHE:C	2.85	0.50
2:B:369:PRO:HB2	2:B:370:TYR:CD1	2.46	0.50
2:B:383:TRP:CZ2	2:B:420:PHE:HB2	2.47	0.49
1:A:726:ARG:O	1:A:730:ILE:CG1	2.59	0.49
1:A:325:TYR:CD2	1:A:665:CYS:HB3	2.44	0.49
1:A:235:LEU:HD11	1:A:243:ASN:HB2	1.95	0.49
1:A:456:LYS:HA	2:B:370:TYR:CD2	2.48	0.49
2:B:312:LYS:HD2	2:B:312:LYS:N	2.28	0.49
1:A:340:ASN:OD1	1:A:342:MET:N	2.45	0.49
1:A:647:LYS:O	1:A:651:VAL:HG23	2.13	0.49
1:A:235:LEU:CD1	1:A:243:ASN:HB2	2.43	0.48
1:A:238:LEU:HB3	1:A:243:ASN:HB3	1.94	0.48
1:A:583:ASP:OD1	1:A:585:LYS:NZ	2.27	0.48
1:A:707:VAL:HG12	1:A:712:ALA:HA	1.95	0.48
2:B:402:PHE:N	2:B:402:PHE:CD2	2.81	0.48
2:B:380:ASN:OD1	2:B:381:ALA:N	2.44	0.48
2:B:402:PHE:HE1	2:B:418:LYS:HD2	1.78	0.48
1:A:366:ASN:HD21	1:A:368:GLN:HB2	1.77	0.48
1:A:548:SER:O	1:A:552:TRP:HB3	2.12	0.48
1:A:448:MET:HE3	1:A:497:LEU:O	2.14	0.48
1:A:693:LEU:HD12	1:A:694:PHE:N	2.28	0.48
2:B:395:ILE:HG22	2:B:433:VAL:HG11	1.95	0.48
1:A:667:ASP:OD1	1:A:667:ASP:N	2.39	0.47
1:A:456:LYS:CB	2:B:370:TYR:HE2	2.27	0.47
1:A:485:ARG:HH21	2:B:398:TYR:HE2	1.62	0.47
1:A:331:ALA:HA	3:A:901:YAF:N1	2.29	0.47
1:A:432:LYS:HA	1:A:435:VAL:HG22	1.96	0.47

*Continued on next page...*

*Continued from previous page...*

Atom-1	Atom-2	Interatomic distance (Å)	Clash overlap (Å)
2:B:371:ARG:CG	2:B:371:ARG:NH1	2.73	0.47
1:A:670:PHE:CD2	1:A:740:VAL:HG23	2.49	0.47
1:A:204:GLN:HE21	1:A:204:GLN:HB2	1.57	0.47
1:A:437:THR:CB	1:A:508:LEU:HD21	2.43	0.47
1:A:402:ASN:O	1:A:404:LYS:HG3	2.15	0.46
1:A:209:VAL:HG12	1:A:213:ILE:HD11	1.98	0.46
1:A:306:LEU:HD11	1:A:582:LEU:HD23	1.97	0.46
1:A:720:ASP:O	1:A:724:VAL:HG23	2.14	0.46
2:B:431:ASP:O	2:B:435:GLN:HG3	2.14	0.46
1:A:456:LYS:CG	2:B:370:TYR:HE2	2.28	0.46
2:B:396:ARG:HG3	2:B:396:ARG:O	2.13	0.46
1:A:188:MET:HE1	1:A:200:ILE:HA	1.97	0.46
1:A:793:ILE:HG22	1:A:794:PRO:CD	2.45	0.46
1:A:191:GLN:NE2	1:A:259:HIS:CD2	2.84	0.46
1:A:568:ARG:NH1	1:A:698:TYR:HA	2.29	0.46
1:A:671:TRP:HA	1:A:735:PHE:CE1	2.50	0.46
1:A:511:LEU:C	1:A:513:ALA:N	2.70	0.45
1:A:346:SER:O	1:A:349:VAL:O	2.34	0.45
1:A:374:LYS:CE	1:A:525:ASP:OD2	2.63	0.45
1:A:465:ALA:CB	1:A:479:LEU:HD23	2.46	0.45
1:A:665:CYS:HB2	1:A:745:GLU:O	2.16	0.45
2:B:383:TRP:CD2	2:B:412:LYS:NZ	2.84	0.45
2:B:402:PHE:CE1	2:B:418:LYS:HD2	2.52	0.45
2:B:416:GLN:HE21	2:B:416:GLN:HB2	1.57	0.45
1:A:666:PHE:O	1:A:701:PRO:HG2	2.17	0.45
1:A:216:ARG:NH1	1:A:219:GLN:OE1	2.50	0.45
1:A:456:LYS:HE3	2:B:370:TYR:OH	2.17	0.45
1:A:670:PHE:CD2	1:A:740:VAL:CG2	2.97	0.45
1:A:808:PRO:O	1:A:810:THR:HG23	2.17	0.45
1:A:310:ARG:NH2	1:A:754:ASP:OD2	2.49	0.45
1:A:503:LYS:O	1:A:506:GLU:HG2	2.17	0.45
2:B:422:VAL:O	2:B:425:ARG:HB3	2.17	0.45
2:B:336:ARG:HH21	2:B:336:ARG:CG	2.18	0.44
1:A:456:LYS:CA	2:B:370:TYR:HE2	2.30	0.44
1:A:691:LEU:HA	1:A:706:LEU:O	2.17	0.44
2:B:322:GLU:OE1	2:B:322:GLU:N	2.43	0.44
1:A:780:ILE:HB	1:A:796:LEU:HB3	1.99	0.44
1:A:495:ASP:OD1	2:B:371:ARG:NH2	2.50	0.44
1:A:238:LEU:HA	1:A:238:LEU:HD23	1.56	0.44
1:A:320:PHE:CE1	1:A:747:VAL:CG2	3.00	0.44
1:A:384:ARG:NH2	2:B:313:GLY:CA	2.77	0.44

*Continued on next page...*

*Continued from previous page...*

Atom-1	Atom-2	Interatomic distance (Å)	Clash overlap (Å)
2:B:318:GLN:O	2:B:321:VAL:HG22	2.17	0.44
1:A:485:ARG:C	1:A:485:ARG:CD	2.85	0.44
1:A:775:LEU:HD23	1:A:775:LEU:HA	1.77	0.44
1:A:448:MET:HB3	2:B:363:LEU:HD11	1.99	0.44
1:A:458:LEU:HD23	1:A:458:LEU:HA	1.75	0.44
2:B:377:GLN:NE2	2:B:411:ASN:HB3	2.33	0.44
1:A:197:PRO:HA	1:A:200:ILE:HG22	2.00	0.44
1:A:566:THR:CG2	1:A:697:LEU:HD22	2.38	0.43
1:A:319:THR:HB	1:A:572:SER:HB3	2.00	0.43
1:A:341:PRO:HG3	1:A:816:LEU:HD21	1.99	0.43
1:A:283:ILE:HD12	1:A:294:ALA:HB2	2.00	0.43
2:B:396:ARG:NH1	2:B:396:ARG:CG	2.73	0.43
1:A:191:GLN:HE22	1:A:259:HIS:CD2	2.37	0.43
2:B:399:GLY:HA3	2:B:437:TRP:CZ2	2.54	0.43
1:A:356:ILE:HD11	1:A:566:THR:HG22	2.01	0.43
1:A:412:LEU:HD23	1:A:412:LEU:HA	1.84	0.43
1:A:495:ASP:CG	2:B:371:ARG:NH2	2.72	0.43
1:A:412:LEU:HD13	1:A:533:PHE:CE1	2.54	0.43
1:A:492:LYS:HB2	1:A:492:LYS:HE3	1.74	0.43
1:A:566:THR:HG21	1:A:697:LEU:HD21	1.99	0.43
2:B:395:ILE:CG2	2:B:433:VAL:HG11	2.49	0.43
1:A:350:ASN:ND2	1:A:350:ASN:C	2.70	0.42
1:A:435:VAL:HG13	2:B:349:ILE:HG13	2.01	0.42
1:A:484:HIS:ND1	1:A:484:HIS:C	2.73	0.42
1:A:258:ARG:HA	1:A:258:ARG:HD3	1.77	0.42
1:A:789:ALA:HB1	1:A:790:PRO:HD2	2.01	0.42
1:A:230:THR:HG23	1:A:270:ILE:HD12	2.01	0.42
1:A:322:LYS:CE	1:A:745:GLU:OE2	2.67	0.42
1:A:537:GLU:HG2	1:A:544:LEU:CD2	2.49	0.42
1:A:671:TRP:O	1:A:673:PRO:HD3	2.19	0.42
1:A:771:ASN:HA	1:A:805:ARG:NH1	2.34	0.42
2:B:384:THR:OG1	2:B:387:GLU:HG3	2.20	0.42
1:A:231:PHE:CE1	1:A:249:VAL:HG12	2.54	0.42
2:B:320:ASP:O	2:B:324:VAL:HG23	2.19	0.42
1:A:439:GLU:HG2	2:B:352:ILE:HD13	2.02	0.42
1:A:548:SER:HB2	1:A:766:ALA:HA	2.01	0.42
1:A:319:THR:HA	1:A:328:ASP:HA	2.02	0.42
1:A:564:HIS:C	1:A:565:LEU:HD12	2.40	0.42
2:B:399:GLY:N	2:B:437:TRP:CE2	2.87	0.42
1:A:718:ILE:HG22	1:A:723:ILE:HG13	2.01	0.42
1:A:511:LEU:C	1:A:513:ALA:H	2.24	0.42

*Continued on next page...*

Continued from previous page...

Atom-1	Atom-2	Interatomic distance (Å)	Clash overlap (Å)
1:A:632:GLN:NE2	1:A:758:ARG:NH2	2.67	0.42
2:B:390:LEU:HD23	2:B:390:LEU:HA	1.69	0.42
1:A:248:LEU:HD12	1:A:248:LEU:HA	1.69	0.41
1:A:430:HIS:O	1:A:433:LYS:HB2	2.20	0.41
1:A:793:ILE:HG22	1:A:794:PRO:HD2	2.02	0.41
1:A:353:LEU:HD23	1:A:353:LEU:HA	1.76	0.41
1:A:740:VAL:O	1:A:740:VAL:HG12	2.19	0.41
1:A:175:GLU:HB3	1:A:185:HIS:CD2	2.56	0.41
1:A:353:LEU:HD13	1:A:565:LEU:HD22	2.02	0.41
1:A:380:GLN:O	1:A:384:ARG:HG3	2.21	0.41
2:B:368:GLU:OE2	2:B:368:GLU:HA	2.16	0.41
1:A:541:ALA:HB2	1:A:761:TYR:CZ	2.56	0.41
1:A:270:ILE:O	1:A:272:PRO:HD3	2.21	0.41
1:A:310:ARG:HH11	1:A:310:ARG:HD3	1.73	0.41
1:A:625:LEU:HD22	1:A:629:VAL:HG11	2.02	0.41
1:A:284:ILE:HG12	1:A:590:VAL:HG21	2.03	0.41
1:A:755:PRO:HA	1:A:758:ARG:NH1	2.36	0.41
1:A:222:LEU:HD23	1:A:222:LEU:HA	1.72	0.41
1:A:366:ASN:OD1	1:A:367:GLY:N	2.54	0.41
2:B:368:GLU:OE2	2:B:368:GLU:CA	2.69	0.40
1:A:612:GLN:HG2	1:A:614:PHE:CE2	2.55	0.40
1:A:724:VAL:HG11	1:A:746:THR:HG21	2.04	0.40
2:B:383:TRP:CE2	2:B:412:LYS:NZ	2.88	0.40
1:A:312:ARG:HH11	1:A:312:ARG:CG	2.21	0.40
1:A:381:GLU:OE2	1:A:520:TYR:OH	2.26	0.40
1:A:468:VAL:O	1:A:472:ARG:NH1	2.55	0.40
1:A:740:VAL:O	1:A:740:VAL:CG1	2.69	0.40
1:A:296:GLN:O	1:A:299:SER:HB3	2.22	0.40
1:A:308:GLU:HG2	1:A:586:LEU:HD22	2.03	0.40
1:A:392:LEU:HD23	1:A:398:PHE:CD2	2.56	0.40

All (2) symmetry-related close contacts are listed below. The label for Atom-2 includes the symmetry operator and encoded unit-cell translations to be applied.

Atom-1	Atom-2	Interatomic distance (Å)	Clash overlap (Å)
1:A:601:GLU:OE2	1:A:601:GLU:OE2[2_565]	2.10	0.10
1:A:668:ARG:NH1	2:B:344:SER:OG[8_455]	2.17	0.03



## 5.3 Torsion angles [i](#)

### 5.3.1 Protein backbone [i](#)

In the following table, the Percentiles column shows the percent Ramachandran outliers of the chain as a percentile score with respect to all X-ray entries followed by that with respect to entries of similar resolution.

The Analysed column shows the number of residues for which the backbone conformation was analysed, and the total number of residues.

Mol	Chain	Analysed	Favoured	Allowed	Outliers	Percentiles	
1	A	664/871 (76%)	639 (96%)	25 (4%)	0	100	100
2	B	131/144 (91%)	121 (92%)	9 (7%)	1 (1%)	19	41
All	All	795/1015 (78%)	760 (96%)	34 (4%)	1 (0%)	51	77

All (1) Ramachandran outliers are listed below:

Mol	Chain	Res	Type
2	B	430	ILE

### 5.3.2 Protein sidechains [i](#)

In the following table, the Percentiles column shows the percent sidechain outliers of the chain as a percentile score with respect to all X-ray entries followed by that with respect to entries of similar resolution.

The Analysed column shows the number of residues for which the sidechain conformation was analysed, and the total number of residues.

Mol	Chain	Analysed	Rotameric	Outliers	Percentiles	
1	A	566/715 (79%)	532 (94%)	34 (6%)	19	40
2	B	117/125 (94%)	102 (87%)	15 (13%)	4	9
All	All	683/840 (81%)	634 (93%)	49 (7%)	14	32

All (49) residues with a non-rotameric sidechain are listed below:

Mol	Chain	Res	Type
1	A	186	ASP
1	A	204	GLN
1	A	227	ILE
1	A	238	LEU
1	A	239	GLU

*Continued on next page...*

*Continued from previous page...*

<b>Mol</b>	<b>Chain</b>	<b>Res</b>	<b>Type</b>
1	A	247	VAL
1	A	277	LYS
1	A	311	ASP
1	A	324	ASN
1	A	332	MET
1	A	350	ASN
1	A	352	GLU
1	A	364	GLU
1	A	466	SER
1	A	467	GLU
1	A	469	LYS
1	A	470	PRO
1	A	472	ARG
1	A	479	LEU
1	A	485	ARG
1	A	508	LEU
1	A	510	GLU
1	A	526	ARG
1	A	568	ARG
1	A	569	ASN
1	A	615	ILE
1	A	692	PHE
1	A	699	LYS
1	A	730	ILE
1	A	734	ILE
1	A	738	SER
1	A	740	VAL
1	A	758	ARG
1	A	785	SER
2	B	312	LYS
2	B	336	ARG
2	B	340	MET
2	B	368	GLU
2	B	370	TYR
2	B	371	ARG
2	B	375	VAL
2	B	409	ILE
2	B	415	VAL
2	B	416	GLN
2	B	418	LYS
2	B	422	VAL
2	B	430	ILE

*Continued on next page...*

*Continued from previous page...*

Mol	Chain	Res	Type
2	B	436	GLU
2	B	440	GLU

Sometimes sidechains can be flipped to improve hydrogen bonding and reduce clashes. All (8) such sidechains are listed below:

Mol	Chain	Res	Type
1	A	191	GLN
1	A	204	GLN
1	A	324	ASN
1	A	527	GLN
1	A	632	GLN
1	A	828	GLN
2	B	377	GLN
2	B	416	GLN

### 5.3.3 RNA [i](#)

There are no RNA molecules in this entry.

## 5.4 Non-standard residues in protein, DNA, RNA chains [i](#)

There are no non-standard protein/DNA/RNA residues in this entry.

## 5.5 Carbohydrates [i](#)

There are no monosaccharides in this entry.

## 5.6 Ligand geometry [i](#)

1 ligand is modelled in this entry.

In the following table, the Counts columns list the number of bonds (or angles) for which Mogul statistics could be retrieved, the number of bonds (or angles) that are observed in the model and the number of bonds (or angles) that are defined in the Chemical Component Dictionary. The Link column lists molecule types, if any, to which the group is linked. The Z score for a bond length (or angle) is the number of standard deviations the observed value is removed from the expected value. A bond length (or angle) with  $|Z| > 2$  is considered an outlier worth inspection. RMSZ is the root-mean-square of all Z scores of the bond lengths (or angles).

Mol	Type	Chain	Res	Link	Bond lengths			Bond angles		
					Counts	RMSZ	# Z  > 2	Counts	RMSZ	# Z  > 2
3	YAF	A	901	-	66,75,75	1.63	14 (21%)	78,117,117	1.57	17 (21%)

In the following table, the Chirals column lists the number of chiral outliers, the number of chiral centers analysed, the number of these observed in the model and the number defined in the Chemical Component Dictionary. Similar counts are reported in the Torsion and Rings columns. '-' means no outliers of that kind were identified.

Mol	Type	Chain	Res	Link	Chirals	Torsions	Rings
3	YAF	A	901	-	-	12/42/114/114	0/7/8/8

All (14) bond length outliers are listed below:

Mol	Chain	Res	Type	Atoms	Z	Observed(Å)	Ideal(Å)
3	A	901	YAF	C21-C22	-5.02	1.48	1.54
3	A	901	YAF	C22-N3	-3.85	1.31	1.37
3	A	901	YAF	O5-C26	-3.67	1.35	1.43
3	A	901	YAF	C23-N4	-3.35	1.28	1.36
3	A	901	YAF	C25-C26	-3.18	1.48	1.52
3	A	901	YAF	C9-N1	-2.65	1.42	1.46
3	A	901	YAF	O6-C27	-2.62	1.36	1.43
3	A	901	YAF	C5-C4	-2.60	1.36	1.40
3	A	901	YAF	O4-C23	-2.54	1.19	1.24
3	A	901	YAF	C33-N7	-2.29	1.30	1.34
3	A	901	YAF	P2-O12	-2.15	1.45	1.55
3	A	901	YAF	C6-C7	-2.14	1.36	1.39
3	A	901	YAF	P1-O9	-2.12	1.45	1.55
3	A	901	YAF	C24-N5	-2.10	1.33	1.39

All (17) bond angle outliers are listed below:

Mol	Chain	Res	Type	Atoms	Z	Observed(°)	Ideal(°)
3	A	901	YAF	C13-C12-C11	-4.55	111.95	121.08
3	A	901	YAF	P2-O11-P1	-4.39	117.77	132.83
3	A	901	YAF	C11-C10-C9	-4.03	96.44	103.88
3	A	901	YAF	C20-C16-C17	3.10	127.05	120.14
3	A	901	YAF	C20-C12-C11	3.09	129.21	120.64
3	A	901	YAF	O15-C32-C38	-2.89	102.70	106.93
3	A	901	YAF	C22-N3-C23	-2.87	121.10	125.42
3	A	901	YAF	C39-C38-C32	-2.84	96.71	100.98
3	A	901	YAF	C10-C11-C12	2.81	121.23	116.00
3	A	901	YAF	C15-C16-C17	-2.75	113.31	120.29
3	A	901	YAF	O8-P1-O10	-2.68	98.59	109.07

Continued on next page...

*Continued from previous page...*

Mol	Chain	Res	Type	Atoms	Z	Observed(°)	Ideal(°)
3	A	901	YAF	C34-C35-N8	2.43	124.04	120.35
3	A	901	YAF	N3-C23-N4	2.37	124.04	119.38
3	A	901	YAF	O4-C23-N4	-2.36	117.92	121.83
3	A	901	YAF	C21-N1-C9	-2.33	107.20	109.54
3	A	901	YAF	O5-C26-C25	-2.23	104.40	109.80
3	A	901	YAF	O12-P2-O13	2.13	122.75	112.24

There are no chirality outliers.

All (12) torsion outliers are listed below:

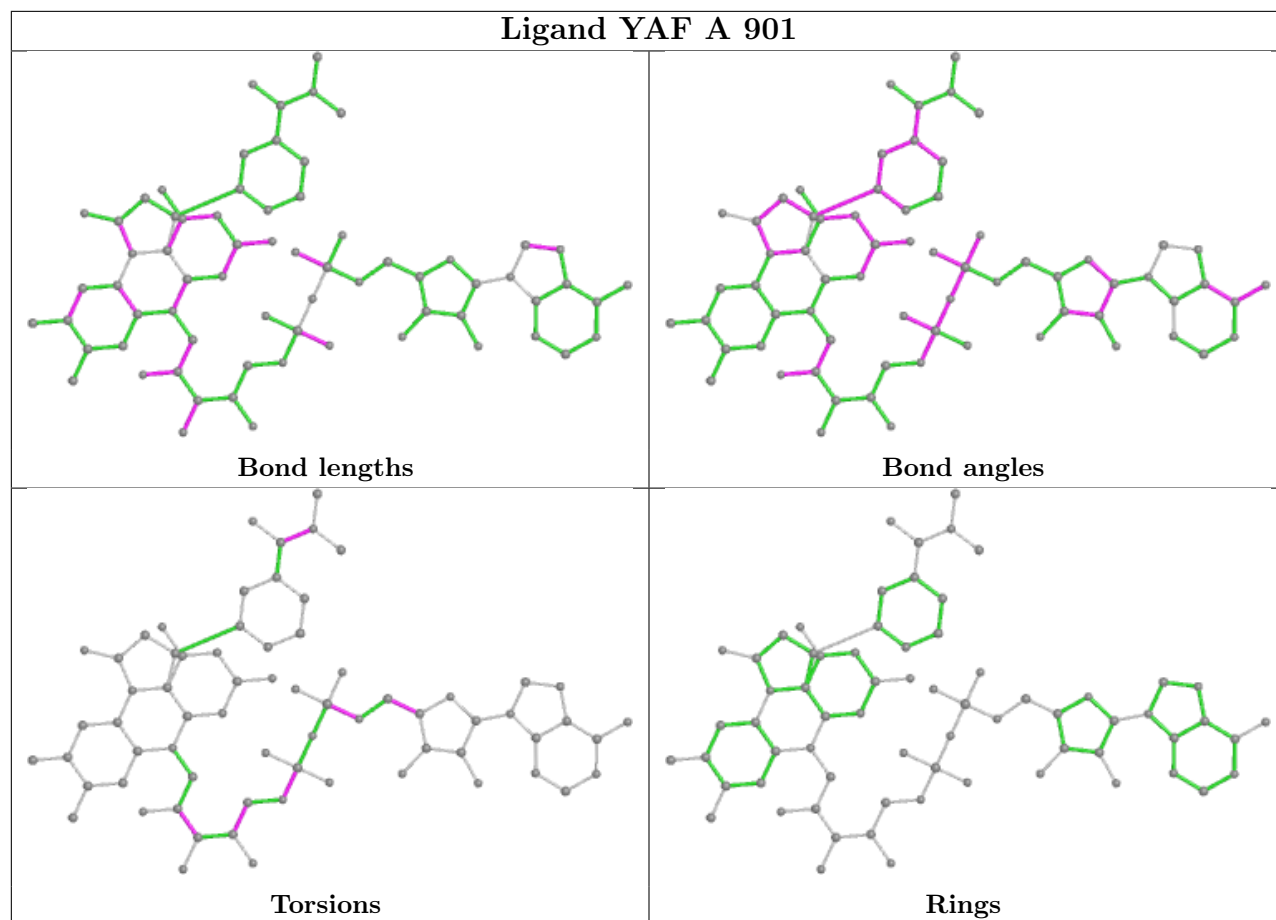
Mol	Chain	Res	Type	Atoms
3	A	901	YAF	C27-C28-C29-O8
3	A	901	YAF	O7-C28-C29-O8
3	A	901	YAF	C30-O14-P2-O13
3	A	901	YAF	O14-C30-C31-O15
3	A	901	YAF	O2-C17-N2-C18
3	A	901	YAF	O14-C30-C31-C39
3	A	901	YAF	O5-C26-C27-C28
3	A	901	YAF	O2-C17-N2-C19
3	A	901	YAF	C30-O14-P2-O11
3	A	901	YAF	C29-O8-P1-O11
3	A	901	YAF	O5-C26-C27-O6
3	A	901	YAF	C30-O14-P2-O12

There are no ring outliers.

1 monomer is involved in 3 short contacts:

Mol	Chain	Res	Type	Clashes	Symm-Clashes
3	A	901	YAF	3	0

The following is a two-dimensional graphical depiction of Mogul quality analysis of bond lengths, bond angles, torsion angles, and ring geometry for all instances of the Ligand of Interest. In addition, ligands with molecular weight > 250 and outliers as shown on the validation Tables will also be included. For torsion angles, if less than 5% of the Mogul distribution of torsion angles is within 10 degrees of the torsion angle in question, then that torsion angle is considered an outlier. Any bond that is central to one or more torsion angles identified as an outlier by Mogul will be highlighted in the graph. For rings, the root-mean-square deviation (RMSD) between the ring in question and similar rings identified by Mogul is calculated over all ring torsion angles. If the average RMSD is greater than 60 degrees and the minimal RMSD between the ring in question and any Mogul-identified rings is also greater than 60 degrees, then that ring is considered an outlier. The outliers are highlighted in purple. The color gray indicates Mogul did not find sufficient equivalents in the CSD to analyse the geometry.



## 5.7 Other polymers [\(i\)](#)

There are no such residues in this entry.

## 5.8 Polymer linkage issues [\(i\)](#)

There are no chain breaks in this entry.

## 6 Fit of model and data

### 6.1 Protein, DNA and RNA chains

In the following table, the column labelled ‘#RSRZ > 2’ contains the number (and percentage) of RSRZ outliers, followed by percent RSRZ outliers for the chain as percentile scores relative to all X-ray entries and entries of similar resolution. The OWAB column contains the minimum, median, 95<sup>th</sup> percentile and maximum values of the occupancy-weighted average B-factor per residue. The column labelled ‘Q < 0.9’ lists the number of (and percentage) of residues with an average occupancy less than 0.9.

Mol	Chain	Analysed	<RSRZ>	#RSRZ>2	OWAB(Å <sup>2</sup> )	Q<0.9
1	A	666/871 (76%)	0.40	16 (2%) 59 60	63, 92, 122, 142	0
2	B	133/144 (92%)	0.54	9 (6%) 17 16	88, 119, 145, 154	0
All	All	799/1015 (78%)	0.42	25 (3%) 49 50	63, 98, 132, 154	0

All (25) RSRZ outliers are listed below:

Mol	Chain	Res	Type	RSRZ
1	A	171	PRO	6.1
2	B	376	ILE	3.5
2	B	349	ILE	3.2
2	B	420	PHE	3.0
1	A	269	ARG	2.9
2	B	374	GLU	2.8
1	A	508	LEU	2.8
1	A	504	LEU	2.8
2	B	378	LYS	2.7
1	A	373	GLU	2.7
1	A	172	SER	2.5
1	A	503	LYS	2.4
1	A	273	LEU	2.4
1	A	270	ILE	2.3
2	B	423	ASN	2.2
1	A	428	ILE	2.2
1	A	834	TYR	2.2
2	B	426	ARG	2.2
1	A	497	LEU	2.1
2	B	427	ARG	2.1
1	A	809	ALA	2.1
2	B	383	TRP	2.1
1	A	455	ILE	2.0
1	A	403	ASN	2.0

*Continued on next page...*

*Continued from previous page...*

Mol	Chain	Res	Type	RSRZ
1	A	509	GLN	2.0

## 6.2 Non-standard residues in protein, DNA, RNA chains [i](#)

There are no non-standard protein/DNA/RNA residues in this entry.

## 6.3 Carbohydrates [i](#)

There are no monosaccharides in this entry.

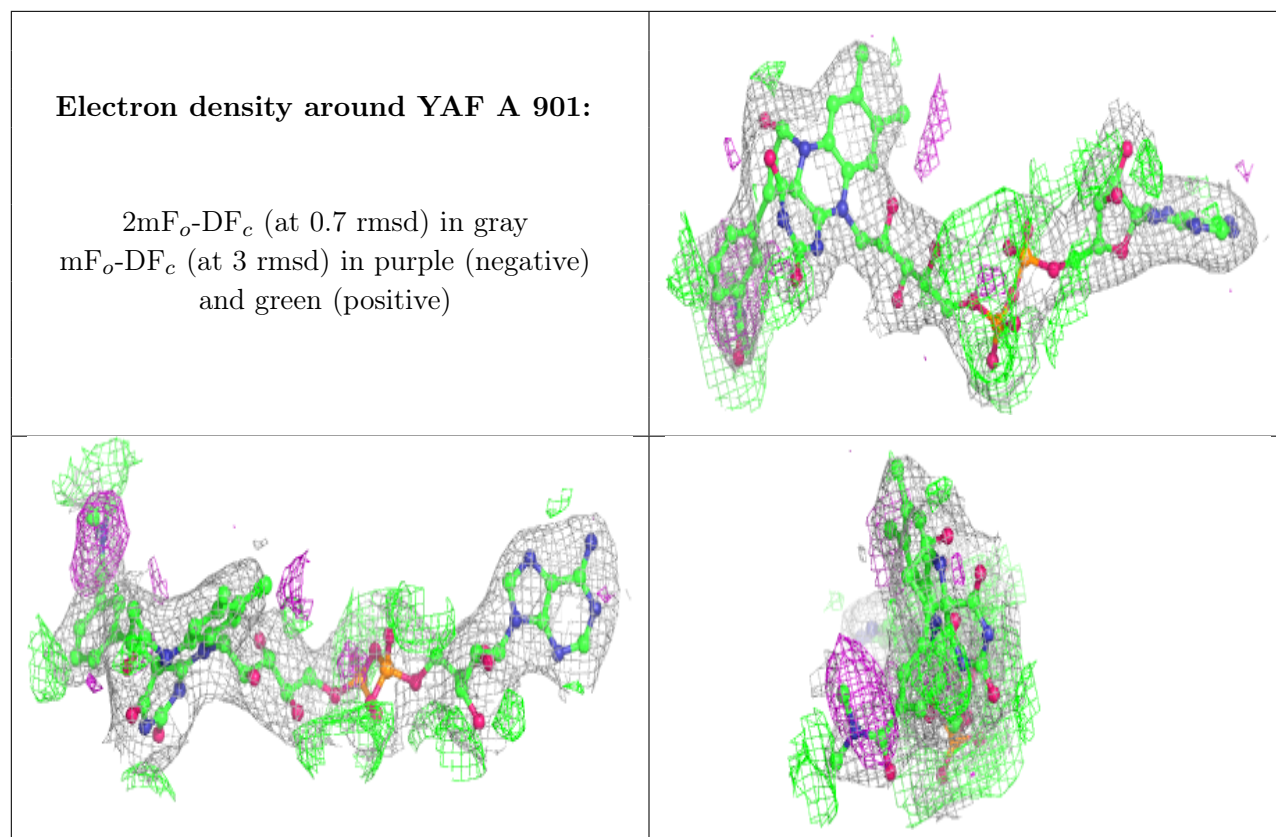
## 6.4 Ligands [i](#)

In the following table, the Atoms column lists the number of modelled atoms in the group and the number defined in the chemical component dictionary. The B-factors column lists the minimum, median, 95<sup>th</sup> percentile and maximum values of B factors of atoms in the group. The column labelled 'Q< 0.9' lists the number of atoms with occupancy less than 0.9.

Mol	Type	Chain	Res	Atoms	RSCC	RSR	B-factors(Å <sup>2</sup> )	Q<0.9
3	YAF	A	901	68/68	0.96	0.21	62,76,97,109	0

The following is a graphical depiction of the model fit to experimental electron density of all instances of the Ligand of Interest. In addition, ligands with molecular weight > 250 and outliers as shown on the geometry validation Tables will also be included. Each fit is shown from different orientation to approximate a three-dimensional view.





## 6.5 Other polymers [i](#)

There are no such residues in this entry.