



Full wwPDB X-ray Structure Validation Report ⓘ

Dec 20, 2018 – 07:49 AM EST

PDB ID : 6FS0
Title : INDUCED MYELOID LEUKEMIA CELL DIFFERENTIATION PROTEIN
FABCOMPLEX IN COMPLEX WITH AZD5991
Authors : Hargreaves, D.
Deposited on : 2018-02-18
Resolution : 2.25 Å(reported)

This is a Full wwPDB X-ray Structure Validation Report for a publicly released PDB entry.

We welcome your comments at validation@mail.wwpdb.org

A user guide is available at

<https://www.wwpdb.org/validation/2017/XrayValidationReportHelp>

with specific help available everywhere you see the ⓘ symbol.

The following versions of software and data (see [references ⓘ](#)) were used in the production of this report:

MolProbity : 4.02b-467
Mogul : 1.7.3 (157068), CSD as539be (2018)
Xtrriage (Phenix) : 1.13
EDS : rb-20031633
Percentile statistics : 20171227.v01 (using entries in the PDB archive December 27th 2017)
Refmac : 5.8.0158
CCP4 : 7.0 (Gargrove)
Ideal geometry (proteins) : Engh & Huber (2001)
Ideal geometry (DNA, RNA) : Parkinson et al. (1996)
Validation Pipeline (wwPDB-VP) : rb-20031633

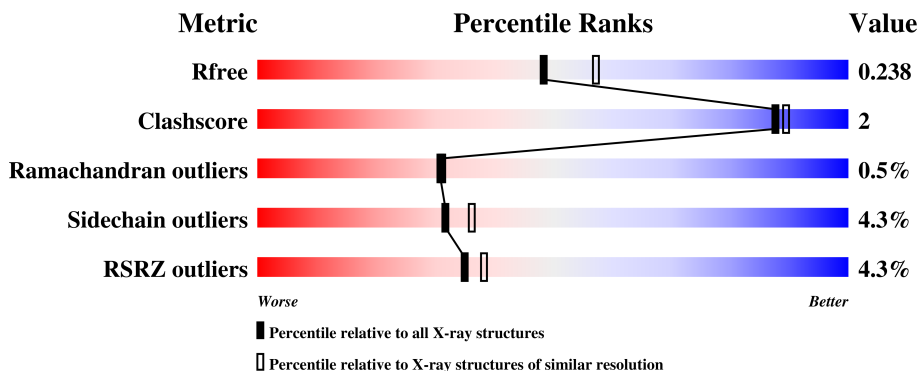
1 Overall quality at a glance

The following experimental techniques were used to determine the structure:

X-RAY DIFFRACTION

The reported resolution of this entry is 2.25 Å.

Percentile scores (ranging between 0-100) for global validation metrics of the entry are shown in the following graphic. The table shows the number of entries on which the scores are based.



Metric	Whole archive (#Entries)	Similar resolution (#Entries, resolution range(Å))
R_{free}	111664	1178 (2.26-2.26)
Clashscore	122126	1286 (2.26-2.26)
Ramachandran outliers	120053	1253 (2.26-2.26)
Sidechain outliers	120020	1254 (2.26-2.26)
RSRZ outliers	108989	1158 (2.26-2.26)

The table below summarises the geometric issues observed across the polymeric chains and their fit to the electron density. The red, orange, yellow and green segments on the lower bar indicate the fraction of residues that contain outliers for ≥ 3 , 2, 1 and 0 types of geometric quality criteria. A grey segment represents the fraction of residues that are not modelled. The numeric value for each fraction is indicated below the corresponding segment, with a dot representing fractions $\leq 5\%$. The upper red bar (where present) indicates the fraction of residues that have poor fit to the electron density. The numeric value is given above the bar.

Mol	Chain	Length	Quality of chain
1	A	159	 6% 89% 9% .
2	H	218	 4% 83% 11% 5%
3	L	215	 3% 92% 7% .

2 Entry composition i

There are 5 unique types of molecules in this entry. The entry contains 4591 atoms, of which 0 are hydrogens and 0 are deuteriums.

In the tables below, the ZeroOcc column contains the number of atoms modelled with zero occupancy, the AltConf column contains the number of residues with at least one atom in alternate conformation and the Trace column contains the number of residues modelled with at most 2 atoms.

- Molecule 1 is a protein called Induced myeloid leukemia cell differentiation protein Mcl-1.

Mol	Chain	Residues	Atoms					ZeroOcc	AltConf	Trace
			Total	C	N	O	S			
1	A	156	1240	778	228	231	3	0	0	0

There are 16 discrepancies between the modelled and reference sequences:

Chain	Residue	Modelled	Actual	Comment	Reference
A	166	GLY	-	expression tag	UNP Q07820
A	167	PRO	-	expression tag	UNP Q07820
A	168	LEU	-	expression tag	UNP Q07820
A	169	GLY	-	expression tag	UNP Q07820
A	170	SER	-	expression tag	UNP Q07820
A	171	GLU	-	expression tag	UNP Q07820
A	172	ASP	-	expression tag	UNP Q07820
A	173	ASP	-	expression tag	UNP Q07820
A	193	SER	ALA	conflict	UNP Q07820
A	196	SER	THR	conflict	UNP Q07820
A	199	LEU	MET	conflict	UNP Q07820
A	201	GLU	ARG	conflict	UNP Q07820
A	202	ALA	SER	conflict	UNP Q07820
A	205	ALA	THR	conflict	UNP Q07820
A	206	GLY	SER	conflict	UNP Q07820
A	208	ARG	LYS	conflict	UNP Q07820

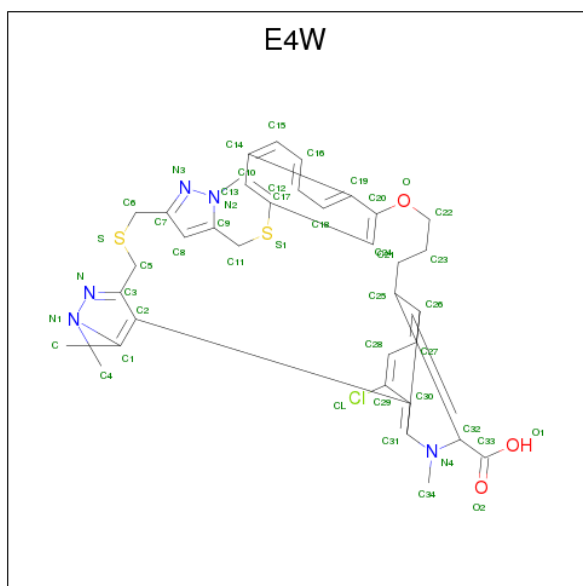
- Molecule 2 is a protein called Fab Heavy Chain.

Mol	Chain	Residues	Atoms					ZeroOcc	AltConf	Trace
			Total	C	N	O	S			
2	H	208	1550	984	258	301	7	0	0	0

- Molecule 3 is a protein called Fab Light Chain.

Mol	Chain	Residues	Atoms					ZeroOcc	AltConf	Trace
			Total	C	N	O	S			
3	L	213	1596	989	271	330	6	0	0	0

- Molecule 4 is AZD5991 (three-letter code: E4W) (formula: $C_{35}H_{34}ClN_5O_3S_2$).



Mol	Chain	Residues	Atoms					ZeroOcc	AltConf	
			Total	C	Cl	N	O			S
4	A	1	46	35	1	5	3	2	0	0


- Molecule 5 is water.

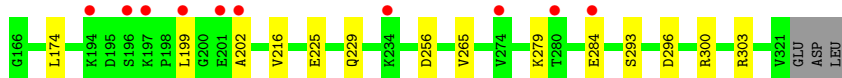
Mol	Chain	Residues	Atoms	ZeroOcc	AltConf
5	A	36	Total O 36 36	0	0
5	H	46	Total O 46 46	0	0
5	L	77	Total O 77 77	0	0

3 Residue-property plots [i](#)


These plots are drawn for all protein, RNA and DNA chains in the entry. The first graphic for a chain summarises the proportions of the various outlier classes displayed in the second graphic. The second graphic shows the sequence view annotated by issues in geometry and electron density. Residues are color-coded according to the number of geometric quality criteria for which they contain at least one outlier: green = 0, yellow = 1, orange = 2 and red = 3 or more. A red dot above a residue indicates a poor fit to the electron density ($RSRZ > 2$). Stretches of 2 or more consecutive residues without any outlier are shown as a green connector. Residues present in the sample, but not in the model, are shown in grey.

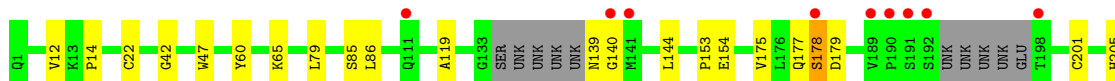
- Molecule 1: Induced myeloid leukemia cell differentiation protein Mcl-1

Chain A: 

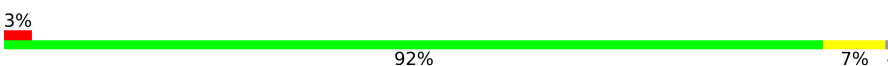


- Molecule 2: Fab Heavy Chain

Chain H: 



- Molecule 3: Fab Light Chain

Chain L: 



4 Data and refinement statistics

Property	Value	Source
Space group	C 1 2 1	Depositor
Cell constants a, b, c, α , β , γ	147.20Å 42.05Å 107.29Å 90.00° 113.17° 90.00°	Depositor
Resolution (Å)	28.15 – 2.25 27.35 – 2.25	Depositor EDS
% Data completeness (in resolution range)	100.0 (28.15-2.25) 100.0 (27.35-2.25)	Depositor EDS
R_{merge}	(Not available)	Depositor
R_{sym}	(Not available)	Depositor
$\langle I/\sigma(I) \rangle$ ¹	1.32 (at 2.24Å)	Xtrriage
Refinement program	BUSTER 2.11.6	Depositor
R, R_{free}	0.193 , 0.233 0.197 , 0.238	Depositor DCC
R_{free} test set	1438 reflections (4.93%)	wwPDB-VP
Wilson B-factor (Å ²)	33.6	Xtrriage
Anisotropy	0.322	Xtrriage
Bulk solvent k_{sol} (e/Å ³), B_{sol} (Å ²)	0.30 , 38.0	EDS
L-test for twinning ²	$\langle L \rangle = 0.49$, $\langle L^2 \rangle = 0.32$	Xtrriage
Estimated twinning fraction	No twinning to report.	Xtrriage
F_o, F_c correlation	0.95	EDS
Total number of atoms	4591	wwPDB-VP
Average B, all atoms (Å ²)	37.0	wwPDB-VP

Xtrriage's analysis on translational NCS is as follows: *The largest off-origin peak in the Patterson function is 5.63% of the height of the origin peak. No significant pseudotranslation is detected.*

¹Intensities estimated from amplitudes.

²Theoretical values of $\langle |L| \rangle$, $\langle L^2 \rangle$ for acentric reflections are 0.5, 0.333 respectively for untwinned datasets, and 0.375, 0.2 for perfectly twinned datasets.

5 Model quality [i](#)

5.1 Standard geometry [i](#)

Bond lengths and bond angles in the following residue types are not validated in this section: E4W

The Z score for a bond length (or angle) is the number of standard deviations the observed value is removed from the expected value. A bond length (or angle) with $|Z| > 5$ is considered an outlier worth inspection. RMSZ is the root-mean-square of all Z scores of the bond lengths (or angles).

Mol	Chain	Bond lengths		Bond angles	
		RMSZ	# Z >5	RMSZ	# Z >5
1	A	0.52	0/1261	0.63	0/1697
2	H	0.52	0/1587	0.73	0/2164
3	L	0.51	0/1633	0.72	0/2229
All	All	0.52	0/4481	0.70	0/6090

There are no bond length outliers.

There are no bond angle outliers.

There are no chirality outliers.

There are no planarity outliers.

5.2 Too-close contacts [i](#)

In the following table, the Non-H and H(model) columns list the number of non-hydrogen atoms and hydrogen atoms in the chain respectively. The H(added) column lists the number of hydrogen atoms added and optimized by MolProbity. The Clashes column lists the number of clashes within the asymmetric unit, whereas Symm-Clashes lists symmetry related clashes.

Mol	Chain	Non-H	H(model)	H(added)	Clashes	Symm-Clashes
1	A	1240	0	1242	5	0
2	H	1550	0	1530	10	0
3	L	1596	0	1527	7	0
4	A	46	0	0	0	0
5	A	36	0	0	0	0
5	H	46	0	0	0	0
5	L	77	0	0	2	0
All	All	4591	0	4299	19	0

The all-atom clashscore is defined as the number of clashes found per 1000 atoms (including hydrogen atoms). The all-atom clashscore for this structure is 2.

All (19) close contacts within the same asymmetric unit are listed below, sorted by their clash magnitude.

Atom-1	Atom-2	Interatomic distance (Å)	Clash overlap (Å)
1:A:174:LEU:HB3	1:A:303:ARG:HH12	1.56	0.70
1:A:216:VAL:HG12	1:A:265:VAL:HG11	1.78	0.66
2:H:175:VAL:HG13	3:L:166:THR:HG22	1.84	0.58
3:L:198:GLN:HG2	3:L:209:GLU:HG3	1.86	0.56
2:H:14:PRO:HD2	2:H:119:ALA:HB2	1.88	0.54
1:A:279:LYS:HG2	1:A:284:GLU:HG2	1.90	0.54
3:L:19:THR:HG22	5:L:371:HOH:O	2.09	0.52
2:H:60:TYR:HB2	2:H:65:LYS:HG3	1.93	0.49
1:A:296:ASP:O	1:A:300:ARG:HB2	2.15	0.47
2:H:47:TRP:CG	3:L:99:TRP:HB2	2.51	0.46
1:A:174:LEU:HB3	1:A:303:ARG:NH1	2.27	0.46
2:H:205:HIS:HB3	2:H:210:THR:HB	1.99	0.44
3:L:201:HIS:HD2	5:L:336:HOH:O	2.01	0.43
3:L:35:ASN:HD22	3:L:50:TYR:HA	1.83	0.42
2:H:144:LEU:HD22	2:H:216:ILE:HG22	2.01	0.41
2:H:12:VAL:HG11	2:H:86:LEU:HD13	2.02	0.41
2:H:22:CYS:HB3	2:H:79:LEU:HB3	2.00	0.41
2:H:42:GLY:HA3	3:L:167:GLN:HG2	2.03	0.41
2:H:153:PRO:HD2	2:H:207:ALA:CB	2.51	0.40

There are no symmetry-related clashes.

5.3 Torsion angles [\(i\)](#)

5.3.1 Protein backbone [\(i\)](#)

In the following table, the Percentiles column shows the percent Ramachandran outliers of the chain as a percentile score with respect to all X-ray entries followed by that with respect to entries of similar resolution.

The Analysed column shows the number of residues for which the backbone conformation was analysed, and the total number of residues.

Mol	Chain	Analysed	Favoured	Allowed	Outliers	Percentiles	
1	A	154/159 (97%)	151 (98%)	2 (1%)	1 (1%)	27	27
2	H	202/218 (93%)	197 (98%)	3 (2%)	2 (1%)	17	14
3	L	209/215 (97%)	205 (98%)	4 (2%)	0	100	100
All	All	565/592 (95%)	553 (98%)	9 (2%)	3 (0%)	31	31

All (3) Ramachandran outliers are listed below:

Mol	Chain	Res	Type
1	A	202	ALA
2	H	178	SER
2	H	140	GLY

5.3.2 Protein sidechains [i](#)

In the following table, the Percentiles column shows the percent sidechain outliers of the chain as a percentile score with respect to all X-ray entries followed by that with respect to entries of similar resolution.

The Analysed column shows the number of residues for which the sidechain conformation was analysed, and the total number of residues.

Mol	Chain	Analysed	Rotameric	Outliers	Percentiles	
1	A	133/136 (98%)	128 (96%)	5 (4%)	36	43
2	H	174/176 (99%)	166 (95%)	8 (5%)	29	33
3	L	182/182 (100%)	174 (96%)	8 (4%)	31	35
All	All	489/494 (99%)	468 (96%)	21 (4%)	32	36

All (21) residues with a non-rotameric sidechain are listed below:

Mol	Chain	Res	Type
1	A	199	LEU
1	A	225	GLU
1	A	229	GLN
1	A	256	ASP
1	A	293	SER
2	H	85	SER
2	H	139	ASN
2	H	154	GLU
2	H	177	GLN
2	H	178	SER
2	H	179	ASP
2	H	201	CYS
2	H	217	VAL
3	L	5	THR
3	L	16	GLN
3	L	19	THR
3	L	130	GLU
3	L	160	THR

Continued on next page...

Continued from previous page...

Mol	Chain	Res	Type
3	L	161	GLN
3	L	163	MET
3	L	196	SER

Some sidechains can be flipped to improve hydrogen bonding and reduce clashes. All (3) such sidechains are listed below:

Mol	Chain	Res	Type
3	L	35	ASN
3	L	112	GLN
3	L	201	HIS

5.3.3 RNA [i](#)

There are no RNA molecules in this entry.

5.4 Non-standard residues in protein, DNA, RNA chains [i](#)

There are no non-standard protein/DNA/RNA residues in this entry.

5.5 Carbohydrates [i](#)

There are no carbohydrates in this entry.

5.6 Ligand geometry [i](#)

1 ligand is modelled in this entry.

In the following table, the Counts columns list the number of bonds (or angles) for which Mogul statistics could be retrieved, the number of bonds (or angles) that are observed in the model and the number of bonds (or angles) that are defined in the Chemical Component Dictionary. The Link column lists molecule types, if any, to which the group is linked. The Z score for a bond length (or angle) is the number of standard deviations the observed value is removed from the expected value. A bond length (or angle) with $|Z| > 2$ is considered an outlier worth inspection. RMSZ is the root-mean-square of all Z scores of the bond lengths (or angles).

Mol	Type	Chain	Res	Link	Bond lengths			Bond angles		
					Counts	RMSZ	# Z > 2	Counts	RMSZ	# Z > 2
4	E4W	A	401	-	43,52,52	0.66	1 (2%)	51,77,77	1.06	3 (5%)

In the following table, the Chirals column lists the number of chiral outliers, the number of chiral centers analysed, the number of these observed in the model and the number defined in the Chemical Component Dictionary. Similar counts are reported in the Torsion and Rings columns. '-' means no outliers of that kind were identified.

Mol	Type	Chain	Res	Link	Chirals	Torsions	Rings
4	E4W	A	401	-	-	0/21/26/26	0/0/7/7

All (1) bond length outliers are listed below:

Mol	Chain	Res	Type	Atoms	Z	Observed(Å)	Ideal(Å)
4	A	401	E4W	C1-N1	2.05	1.40	1.37

All (3) bond angle outliers are listed below:

Mol	Chain	Res	Type	Atoms	Z	Observed(°)	Ideal(°)
4	A	401	E4W	C5-C3-C2	-3.43	125.11	130.32
4	A	401	E4W	C2-C1-N1	-2.76	105.38	109.45
4	A	401	E4W	C3-N-N1	2.79	106.89	104.48

There are no chirality outliers.

There are no torsion outliers.

There are no ring outliers.

No monomer is involved in short contacts.

5.7 Other polymers [i](#)

There are no such residues in this entry.

5.8 Polymer linkage issues [i](#)

There are no chain breaks in this entry.

6 Fit of model and data

6.1 Protein, DNA and RNA chains

In the following table, the column labelled ‘#RSRZ > 2’ contains the number (and percentage) of RSRZ outliers, followed by percent RSRZ outliers for the chain as percentile scores relative to all X-ray entries and entries of similar resolution. The OWAB column contains the minimum, median, 95th percentile and maximum values of the occupancy-weighted average B-factor per residue. The column labelled ‘Q < 0.9’ lists the number of (and percentage) of residues with an average occupancy less than 0.9.

Mol	Chain	Analysed	<RSRZ>	#RSRZ>2	OWAB(Å ²)	Q<0.9
1	A	156/159 (98%)	0.28	10 (6%) 19 22	23, 41, 70, 87	0
2	H	208/218 (95%)	-0.07	9 (4%) 35 38	21, 34, 66, 116	0
3	L	213/215 (99%)	-0.32	6 (2%) 53 57	20, 31, 49, 71	0
All	All	577/592 (97%)	-0.07	25 (4%) 35 38	20, 34, 66, 116	0

All (25) RSRZ outliers are listed below:

Mol	Chain	Res	Type	RSRZ
1	A	196	SER	8.2
1	A	202	ALA	5.7
2	H	192	SER	5.2
2	H	191	SER	4.8
2	H	140	GLY	4.2
2	H	190	PRO	3.8
1	A	234	LYS	3.0
2	H	178	SER	2.9
2	H	189	VAL	2.9
3	L	206	HIS	2.8
1	A	194	LYS	2.8
3	L	205	GLY	2.7
2	H	141	MET	2.6
1	A	201	GLU	2.6
3	L	160	THR	2.6
3	L	174	ASN	2.5
3	L	2	SER	2.5
1	A	199	LEU	2.3
2	H	198	THR	2.3
1	A	284	GLU	2.2
1	A	197	LYS	2.2
1	A	280	THR	2.2
2	H	111	GLN	2.2

Continued on next page...

Continued from previous page...

Mol	Chain	Res	Type	RSRZ
3	L	172	SER	2.1
1	A	274	VAL	2.0

6.2 Non-standard residues in protein, DNA, RNA chains [i](#)

There are no non-standard protein/DNA/RNA residues in this entry.

6.3 Carbohydrates [i](#)

There are no carbohydrates in this entry.

6.4 Ligands [i](#)

In the following table, the Atoms column lists the number of modelled atoms in the group and the number defined in the chemical component dictionary. The B-factors column lists the minimum, median, 95th percentile and maximum values of B factors of atoms in the group. The column labelled 'Q < 0.9' lists the number of atoms with occupancy less than 0.9.

Mol	Type	Chain	Res	Atoms	RSCC	RSR	B-factors(Å ²)	Q < 0.9
4	E4W	A	401	46/46	0.93	0.12	29,38,44,51	0

6.5 Other polymers [i](#)

There are no such residues in this entry.