



Full wwPDB X-ray Structure Validation Report ⓘ

Mar 9, 2018 – 10:00 am GMT

PDB ID : 3FUK
Title : Leukotriene A4 hydrolase in complex with 1-[2-(1H-indol-5-yloxy)ethyl]piperidine-4-carboxylic acid
Authors : Davies, D.R.
Deposited on : 2009-01-14
Resolution : 1.95 Å(reported)

This is a Full wwPDB X-ray Structure Validation Report for a publicly released PDB entry.

We welcome your comments at validation@mail.wwpdb.org

A user guide is available at

<https://www.wwpdb.org/validation/2017/XrayValidationReportHelp>

with specific help available everywhere you see the ⓘ symbol.

The following versions of software and data (see [references ⓘ](#)) were used in the production of this report:

MolProbity : 4.02b-467
Xtriage (Phenix) : 1.13
EDS : trunk30967
Percentile statistics : 20171227.v01 (using entries in the PDB archive December 27th 2017)
Refmac : 5.8.0158
CCP4 : 7.0 (Gargrove)
Ideal geometry (proteins) : Engh & Huber (2001)
Ideal geometry (DNA, RNA) : Parkinson et al. (1996)
Validation Pipeline (wwPDB-VP) : trunk30967

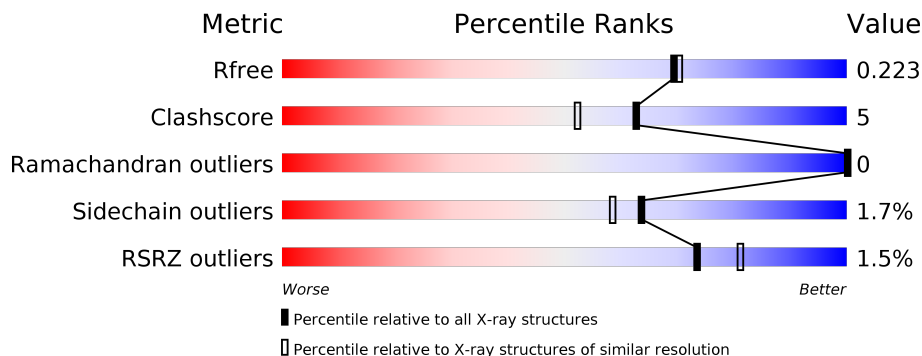
1 Overall quality at a glance

The following experimental techniques were used to determine the structure:

X-RAY DIFFRACTION

The reported resolution of this entry is 1.95 Å.

Percentile scores (ranging between 0-100) for global validation metrics of the entry are shown in the following graphic. The table shows the number of entries on which the scores are based.



Metric	Whole archive (#Entries)	Similar resolution (#Entries, resolution range(Å))
R_{free}	111664	2220 (1.96-1.96)
Clashscore	122126	2333 (1.96-1.96)
Ramachandran outliers	120053	2314 (1.96-1.96)
Sidechain outliers	120020	2314 (1.96-1.96)
RSRZ outliers	108989	2174 (1.96-1.96)

The table below summarises the geometric issues observed across the polymeric chains and their fit to the electron density. The red, orange, yellow and green segments on the lower bar indicate the fraction of residues that contain outliers for ≥ 3 , 2, 1 and 0 types of geometric quality criteria. A grey segment represents the fraction of residues that are not modelled. The numeric value for each fraction is indicated below the corresponding segment, with a dot representing fractions $\leq 5\%$. The upper red bar (where present) indicates the fraction of residues that have poor fit to the electron density. The numeric value is given above the bar.

Mol	Chain	Length	Quality of chain
1	A	611	

The following table lists non-polymeric compounds, carbohydrate monomers and non-standard residues in protein, DNA, RNA chains that are outliers for geometric or electron-density-fit criteria:

Mol	Type	Chain	Res	Chirality	Geometry	Clashes	Electron density
4	58Z	A	710	-	-	X	-

2 Entry composition [i](#)

There are 7 unique types of molecules in this entry. The entry contains 5254 atoms, of which 0 are hydrogens and 0 are deuteriums.

In the tables below, the ZeroOcc column contains the number of atoms modelled with zero occupancy, the AltConf column contains the number of residues with at least one atom in alternate conformation and the Trace column contains the number of residues modelled with at most 2 atoms.

- Molecule 1 is a protein called Leukotriene A-4 hydrolase.

Mol	Chain	Residues	Atoms					ZeroOcc	AltConf	Trace
			Total	C	N	O	S			
1	A	608	4867	3124	809	913	21	0	1	0

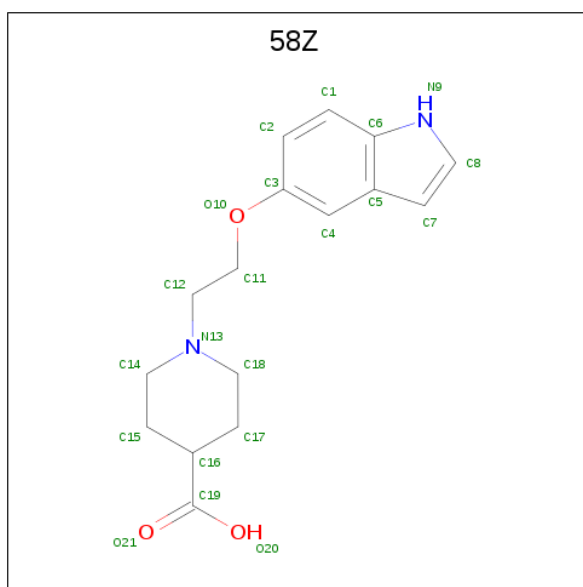
- Molecule 2 is ZINC ION (three-letter code: ZN) (formula: Zn).

Mol	Chain	Residues	Atoms		ZeroOcc	AltConf
2	A	1	Total	Zn	0	0
			1	1		

- Molecule 3 is YTTERBIUM (III) ION (three-letter code: YB) (formula: Yb).

Mol	Chain	Residues	Atoms		ZeroOcc	AltConf
3	A	1	Total	Yb	0	0
			1	1		

- Molecule 4 is 1-[2-(1H-indol-5-yloxy)ethyl]piperidine-4-carboxylic acid (three-letter code: 58Z) (formula: C₁₆H₂₀N₂O₃).



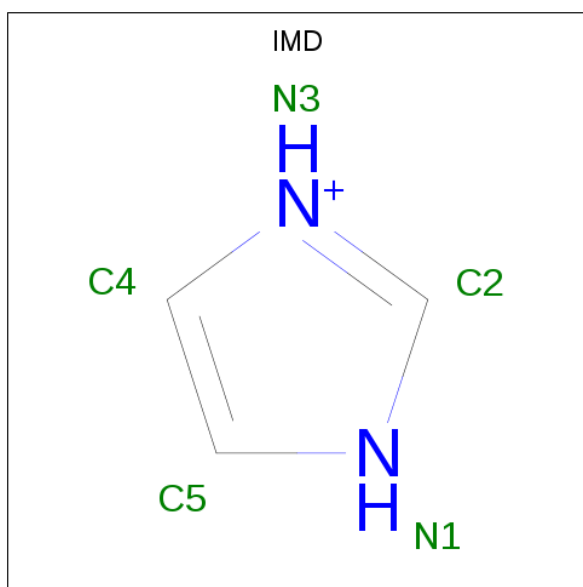
Mol	Chain	Residues	Atoms				ZeroOcc	AltConf
			Total	C	N	O		
4	A	1	21	16	2	3	0	0

- Molecule 5 is ACETATE ION (three-letter code: ACT) (formula: $C_2H_3O_2$).



Mol	Chain	Residues	Atoms			ZeroOcc	AltConf
			Total	C	O		
5	A	1	4	2	2	0	0

- Molecule 6 is IMIDAZOLE (three-letter code: IMD) (formula: $C_3H_5N_2$).



Mol	Chain	Residues	Atoms	ZeroOcc	AltConf
6	A	1	Total C N 5 3 2	0	0
6	A	1	Total C N 5 3 2	0	0

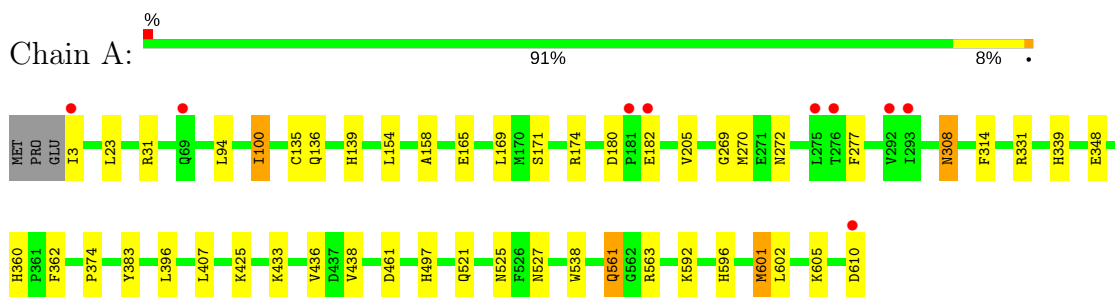
- Molecule 7 is water.

Mol	Chain	Residues	Atoms	ZeroOcc	AltConf
7	A	350	Total O 350 350	0	0

3 Residue-property plots [i](#)

These plots are drawn for all protein, RNA and DNA chains in the entry. The first graphic for a chain summarises the proportions of the various outlier classes displayed in the second graphic. The second graphic shows the sequence view annotated by issues in geometry and electron density. Residues are color-coded according to the number of geometric quality criteria for which they contain at least one outlier: green = 0, yellow = 1, orange = 2 and red = 3 or more. A red dot above a residue indicates a poor fit to the electron density ($RSRZ > 2$). Stretches of 2 or more consecutive residues without any outlier are shown as a green connector. Residues present in the sample, but not in the model, are shown in grey.

- Molecule 1: Leukotriene A-4 hydrolase



4 Data and refinement statistics

Property	Value	Source
Space group	P 21 21 21	Depositor
Cell constants a, b, c, α , β , γ	78.18Å 87.22Å 99.90Å 90.00° 90.00° 90.00°	Depositor
Resolution (Å)	50.00 – 1.95 43.34 – 1.95	Depositor EDS
% Data completeness (in resolution range)	(Not available) (50.00-1.95) 98.4 (43.34-1.95)	Depositor EDS
R_{merge}	0.13	Depositor
R_{sym}	(Not available)	Depositor
$\langle I/\sigma(I) \rangle$ ¹	2.96 (at 1.95Å)	Xtrriage
Refinement program	REFMAC 5.5.0053	Depositor
R, R_{free}	0.191 , 0.233 0.184 , 0.223	Depositor DCC
R_{free} test set	2551 reflections (5.11%)	wwPDB-VP
Wilson B-factor (Å ²)	23.2	Xtrriage
Anisotropy	0.095	Xtrriage
Bulk solvent k_{sol} (e/Å ³), B_{sol} (Å ²)	0.35 , 40.2	EDS
L-test for twinning ²	$\langle L \rangle = 0.49$, $\langle L^2 \rangle = 0.33$	Xtrriage
Estimated twinning fraction	No twinning to report.	Xtrriage
F_o, F_c correlation	0.95	EDS
Total number of atoms	5254	wwPDB-VP
Average B, all atoms (Å ²)	24.0	wwPDB-VP

Xtrriage's analysis on translational NCS is as follows: *The largest off-origin peak in the Patterson function is 4.36% of the height of the origin peak. No significant pseudotranslation is detected.*

¹Intensities estimated from amplitudes.

²Theoretical values of $\langle |L| \rangle$, $\langle L^2 \rangle$ for acentric reflections are 0.5, 0.333 respectively for untwinned datasets, and 0.375, 0.2 for perfectly twinned datasets.

5 Model quality [i](#)

5.1 Standard geometry [i](#)

Bond lengths and bond angles in the following residue types are not validated in this section: ZN, YB, 58Z, IMD, ACT

The Z score for a bond length (or angle) is the number of standard deviations the observed value is removed from the expected value. A bond length (or angle) with $|Z| > 5$ is considered an outlier worth inspection. RMSZ is the root-mean-square of all Z scores of the bond lengths (or angles).

Mol	Chain	Bond lengths		Bond angles	
		RMSZ	# Z >5	RMSZ	# Z >5
1	A	0.54	0/4994	0.61	0/6787

There are no bond length outliers.

There are no bond angle outliers.

There are no chirality outliers.

There are no planarity outliers.

5.2 Too-close contacts [i](#)

In the following table, the Non-H and H(model) columns list the number of non-hydrogen atoms and hydrogen atoms in the chain respectively. The H(added) column lists the number of hydrogen atoms added and optimized by MolProbity. The Clashes column lists the number of clashes within the asymmetric unit, whereas Symm-Clashes lists symmetry related clashes.

Mol	Chain	Non-H	H(model)	H(added)	Clashes	Symm-Clashes
1	A	4867	0	4827	45	0
2	A	1	0	0	0	0
3	A	1	0	0	0	0
4	A	21	0	19	11	0
5	A	4	0	3	0	0
6	A	10	0	10	3	0
7	A	350	0	0	7	0
All	All	5254	0	4859	46	0

The all-atom clashscore is defined as the number of clashes found per 1000 atoms (including hydrogen atoms). The all-atom clashscore for this structure is 5.

All (46) close contacts within the same asymmetric unit are listed below, sorted by their clash magnitude.

Atom-1	Atom-2	Interatomic distance (Å)	Clash overlap (Å)
1:A:601:MET:CE	1:A:605:LYS:HD3	1.87	1.03
1:A:601:MET:HE1	1:A:605:LYS:HD3	1.04	1.02
1:A:269:GLY:O	4:A:710:58Z:C17	2.14	0.95
1:A:269:GLY:O	4:A:710:58Z:H17	1.67	0.95
1:A:348:GLU:OE2	6:A:803:IMD:H4	1.76	0.84
1:A:339:HIS:HD2	1:A:461:ASP:H	1.27	0.82
1:A:360:HIS:HD2	1:A:362:PHE:H	1.32	0.77
1:A:269:GLY:O	4:A:710:58Z:H17A	1.84	0.75
1:A:527:ASN:ND2	1:A:538:TRP:HE1	1.89	0.70
1:A:601:MET:HE1	1:A:605:LYS:CD	2.01	0.69
4:A:710:58Z:H18	7:A:864:HOH:O	1.94	0.67
1:A:527:ASN:HD22	1:A:538:TRP:HE1	1.40	0.66
1:A:339:HIS:CD2	1:A:461:ASP:H	2.10	0.65
1:A:136:GLN:HG2	4:A:710:58Z:H2	1.79	0.64
1:A:521:GLN:HE22	1:A:527:ASN:H	1.45	0.63
1:A:601:MET:HE2	1:A:602:LEU:HA	1.81	0.62
1:A:360:HIS:CD2	1:A:362:PHE:H	2.16	0.61
1:A:374:PRO:O	4:A:710:58Z:H7	2.03	0.58
1:A:270:MET:SD	4:A:710:58Z:H18A	2.43	0.58
1:A:596:HIS:HE1	7:A:612:HOH:O	1.89	0.55
1:A:497:HIS:CD2	7:A:911:HOH:O	2.60	0.54
1:A:425:LYS:NZ	7:A:929:HOH:O	2.38	0.54
1:A:171:SER:HB3	1:A:272:ASN:HB3	1.91	0.53
1:A:136:GLN:CG	4:A:710:58Z:H2	2.39	0.52
1:A:497:HIS:HD2	7:A:911:HOH:O	1.94	0.50
1:A:396:LEU:HG	1:A:438:VAL:CG1	2.43	0.48
1:A:383:TYR:OH	4:A:710:58Z:H15A	2.14	0.48
1:A:31:ARG:NH2	7:A:960:HOH:O	2.47	0.47
1:A:497:HIS:CD2	6:A:802:IMD:H5	2.50	0.47
1:A:23:LEU:O	1:A:158:ALA:HA	2.15	0.46
1:A:165:GLU:H	1:A:165:GLU:CD	2.19	0.46
1:A:561:GLN:NE2	1:A:563:ARG:H	2.13	0.46
1:A:270:MET:SD	4:A:710:58Z:C18	3.04	0.46
1:A:592:LYS:NZ	1:A:610:ASP:OD2	2.46	0.44
1:A:94:LEU:HD11	1:A:100:ILE:HD12	1.99	0.43
1:A:308:ASN:OD1	1:A:314:PHE:HA	2.18	0.43
1:A:136:GLN:CD	4:A:710:58Z:H2	2.39	0.43
1:A:521:GLN:NE2	1:A:527:ASN:H	2.15	0.43
1:A:497:HIS:CD2	6:A:802:IMD:C5	3.03	0.42
1:A:180:ASP:OD1	1:A:182:GLU:HG2	2.20	0.42
1:A:269:GLY:HA2	1:A:277:PHE:O	2.19	0.42
1:A:174:ARG:NE	7:A:869:HOH:O	2.52	0.41

Continued on next page...

Continued from previous page...

Atom-1	Atom-2	Interatomic distance (Å)	Clash overlap (Å)
1:A:433:LYS:HA	1:A:436:VAL:HG13	2.02	0.41
1:A:135:CYS:HA	1:A:139:HIS:HB2	2.03	0.41
1:A:169:LEU:HB2	1:A:205:VAL:CG1	2.51	0.41
1:A:601:MET:CE	1:A:605:LYS:CD	2.78	0.40

There are no symmetry-related clashes.

5.3 Torsion angles [i](#)

5.3.1 Protein backbone [i](#)

In the following table, the Percentiles column shows the percent Ramachandran outliers of the chain as a percentile score with respect to all X-ray entries followed by that with respect to entries of similar resolution.

The Analysed column shows the number of residues for which the backbone conformation was analysed, and the total number of residues.

Mol	Chain	Analysed	Favoured	Allowed	Outliers	Percentiles
1	A	607/611 (99%)	595 (98%)	12 (2%)	0	100 100

There are no Ramachandran outliers to report.

5.3.2 Protein sidechains [i](#)

In the following table, the Percentiles column shows the percent sidechain outliers of the chain as a percentile score with respect to all X-ray entries followed by that with respect to entries of similar resolution.

The Analysed column shows the number of residues for which the sidechain conformation was analysed, and the total number of residues.

Mol	Chain	Analysed	Rotameric	Outliers	Percentiles
1	A	541/543 (100%)	532 (98%)	9 (2%)	63 58

All (9) residues with a non-rotameric sidechain are listed below:

Mol	Chain	Res	Type
1	A	3	ILE
1	A	100	ILE

Continued on next page...

Continued from previous page...

Mol	Chain	Res	Type
1	A	154	LEU
1	A	308	ASN
1	A	331	ARG
1	A	407	LEU
1	A	525	ASN
1	A	561	GLN
1	A	601	MET

Some sidechains can be flipped to improve hydrogen bonding and reduce clashes. All (16) such sidechains are listed below:

Mol	Chain	Res	Type
1	A	134	GLN
1	A	213	GLN
1	A	226	GLN
1	A	339	HIS
1	A	341	ASN
1	A	360	HIS
1	A	440	ASN
1	A	441	GLN
1	A	466	ASN
1	A	497	HIS
1	A	521	GLN
1	A	525	ASN
1	A	527	ASN
1	A	544	GLN
1	A	561	GLN
1	A	596	HIS

5.3.3 RNA [i](#)

There are no RNA molecules in this entry.

5.4 Non-standard residues in protein, DNA, RNA chains [i](#)

There are no non-standard protein/DNA/RNA residues in this entry.

5.5 Carbohydrates [i](#)

There are no carbohydrates in this entry.

5.6 Ligand geometry

Of 6 ligands modelled in this entry, 2 are monoatomic - leaving 4 for Mogul analysis.

In the following table, the Counts columns list the number of bonds (or angles) for which Mogul statistics could be retrieved, the number of bonds (or angles) that are observed in the model and the number of bonds (or angles) that are defined in the Chemical Component Dictionary. The Link column lists molecule types, if any, to which the group is linked. The Z score for a bond length (or angle) is the number of standard deviations the observed value is removed from the expected value. A bond length (or angle) with $|Z| > 2$ is considered an outlier worth inspection. RMSZ is the root-mean-square of all Z scores of the bond lengths (or angles).

Mol	Type	Chain	Res	Link	Bond lengths			Bond angles		
					Counts	RMSZ	# Z > 2	Counts	RMSZ	# Z > 2
4	58Z	A	710	2	18,23,23	0.80	0	24,31,31	2.43	9 (37%)
5	ACT	A	801	-	1,3,3	0.96	0	0,3,3	0.00	-
6	IMD	A	802	-	3,5,5	0.37	0	4,5,5	0.48	0
6	IMD	A	803	-	3,5,5	0.43	0	4,5,5	0.56	0

In the following table, the Chirals column lists the number of chiral outliers, the number of chiral centers analysed, the number of these observed in the model and the number defined in the Chemical Component Dictionary. Similar counts are reported in the Torsion and Rings columns. '2' means no outliers of that kind were identified.

Mol	Type	Chain	Res	Link	Chirals	Torsions	Rings
4	58Z	A	710	2	-	0/6/20/20	0/3/3/3
5	ACT	A	801	-	-	0/0/0/0	0/0/0/0
6	IMD	A	802	-	-	0/0/0/0	0/1/1/1
6	IMD	A	803	-	-	0/0/0/0	0/1/1/1

There are no bond length outliers.

All (9) bond angle outliers are listed below:

Mol	Chain	Res	Type	Atoms	Z	Observed(°)	Ideal(°)
4	A	710	58Z	C7-C5-C4	-2.17	128.80	136.62
4	A	710	58Z	C15-C16-C17	-2.09	105.06	109.48
4	A	710	58Z	C12-N13-C18	2.68	118.24	111.24
4	A	710	58Z	C14-C15-C16	2.86	114.59	111.01
4	A	710	58Z	O10-C11-C12	2.88	114.88	107.68
4	A	710	58Z	C12-N13-C14	4.28	122.42	111.24
4	A	710	58Z	C18-N13-C14	4.72	119.32	108.87
4	A	710	58Z	C7-C5-C6	5.24	110.67	106.20
4	A	710	58Z	C18-C17-C16	5.25	117.59	111.01

There are no chirality outliers.

There are no torsion outliers.

There are no ring outliers.

3 monomers are involved in 14 short contacts:

Mol	Chain	Res	Type	Clashes	Symm-Clashes
4	A	710	58Z	11	0
6	A	802	IMD	2	0
6	A	803	IMD	1	0

5.7 Other polymers [i](#)

There are no such residues in this entry.

5.8 Polymer linkage issues [i](#)

There are no chain breaks in this entry.

6 Fit of model and data [i](#)

6.1 Protein, DNA and RNA chains [i](#)

In the following table, the column labelled ‘#RSRZ> 2’ contains the number (and percentage) of RSRZ outliers, followed by percent RSRZ outliers for the chain as percentile scores relative to all X-ray entries and entries of similar resolution. The OWAB column contains the minimum, median, 95th percentile and maximum values of the occupancy-weighted average B-factor per residue. The column labelled ‘Q< 0.9’ lists the number of (and percentage) of residues with an average occupancy less than 0.9.

Mol	Chain	Analysed	<RSRZ>	#RSRZ>2	OWAB(Å ²)	Q<0.9
1	A	608/611 (99%)	-0.02	9 (1%) 73 81	15, 23, 35, 48	0

All (9) RSRZ outliers are listed below:

Mol	Chain	Res	Type	RSRZ
1	A	610	ASP	4.1
1	A	181	PRO	3.1
1	A	3	ILE	2.6
1	A	275	LEU	2.1
1	A	182	GLU	2.1
1	A	276	THR	2.1
1	A	293	ILE	2.1
1	A	69	GLN	2.0
1	A	292	VAL	2.0

6.2 Non-standard residues in protein, DNA, RNA chains [i](#)

There are no non-standard protein/DNA/RNA residues in this entry.

6.3 Carbohydrates [i](#)

There are no carbohydrates in this entry.

6.4 Ligands [i](#)

In the following table, the Atoms column lists the number of modelled atoms in the group and the number defined in the chemical component dictionary. The B-factors column lists the minimum, median, 95th percentile and maximum values of B factors of atoms in the group. The column labelled ‘Q< 0.9’ lists the number of atoms with occupancy less than 0.9.

Mol	Type	Chain	Res	Atoms	RSCC	RSR	B-factors(\AA^2)	Q<0.9
4	58Z	A	710	21/21	0.86	0.32	33,51,57,57	0
6	IMD	A	802	5/5	0.91	0.19	32,32,33,33	0
6	IMD	A	803	5/5	0.95	0.12	23,23,25,26	0
5	ACT	A	801	4/4	0.96	0.12	27,28,28,29	0
2	ZN	A	701	1/1	1.00	0.09	22,22,22,22	0
3	YB	A	702	1/1	1.00	0.08	25,25,25,25	0

6.5 Other polymers [i](#)

There are no such residues in this entry.