



Full wwPDB/EMDatabank EM Map/Model Validation Report ⓘ

Feb 21, 2018 – 12:28 pm GMT

PDB ID : 5FWP
EMDB ID: : EMD-3340
Title : Atomic cryoEM structure of Hsp90-Cdc37-Cdk4 complex
Authors : Verba, K.A.; Wang, R.Y.R.; Arakawa, A.; Liu, Y.; Yokoyama, S.; Agard, D.A.
Deposited on : 2016-02-18
Resolution : 7.20 Å(reported)
Based on PDB ID : ?

This is a Full wwPDB/EMDatabank EM Map/Model Validation Report for a publicly released PDB/EMDB entry.

We welcome your comments at validation@mail.wwpdb.org

A user guide is available at

<https://www.wwpdb.org/validation/2017/EMValidationReportHelp>

with specific help available everywhere you see the ⓘ symbol.

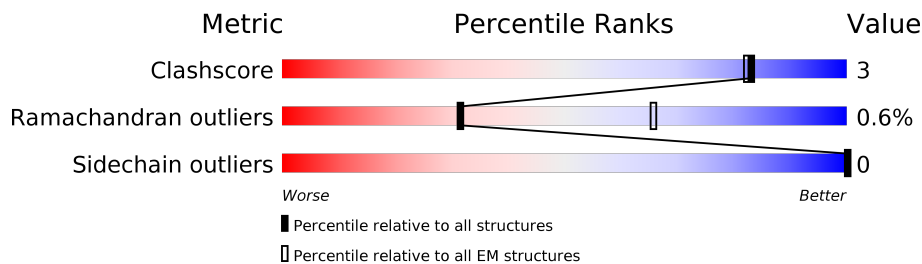
MolProbity : 4.02b-467
Mogul : 1.7.3 (157068), CSD as539be (2018)
Percentile statistics : 20171227.v01 (using entries in the PDB archive December 27th 2017)
Ideal geometry (proteins) : Engh & Huber (2001)
Ideal geometry (DNA, RNA) : Parkinson et. al. (1996)
Validation Pipeline (wwPDB-VP) : trunk30686

1 Overall quality at a glance

The following experimental techniques were used to determine the structure:
ELECTRON MICROSCOPY

The reported resolution of this entry is 7.20 Å.

Percentile scores (ranging between 0-100) for global validation metrics of the entry are shown in the following graphic. The table shows the number of entries on which the scores are based.



Metric	Whole archive (#Entries)	EM structures (#Entries)
Clashscore	136279	1886
Ramachandran outliers	132675	1663
Sidechain outliers	132484	1531

The table below summarises the geometric issues observed across the polymeric chains. The red, orange, yellow and green segments on the bar indicate the fraction of residues that contain outliers for ≥ 3 , 2, 1 and 0 types of geometric quality criteria. A grey segment represents the fraction of residues that are not modelled. The numeric value for each fraction is indicated below the corresponding segment, with a dot representing fractions $\leq 5\%$

Mol	Chain	Length	Quality of chain
1	A	727	
1	B	727	
2	E	378	
3	K	310	

2 Entry composition i

There are 5 unique types of molecules in this entry. The entry contains 28355 atoms, of which 14168 are hydrogens and 0 are deuteriums.

In the tables below, the AltConf column contains the number of residues with at least one atom in alternate conformation and the Trace column contains the number of residues modelled with at most 2 atoms.

- Molecule 1 is a protein called HEAT SHOCK PROTEIN HSP 90 BETA.

Mol	Chain	Residues	Atoms							AltConf	Trace
			Total	C	H	N	O	S			
1	A	638	Total	C	H	N	O	S	0	0	
			10399	3280	5226	870	1000	23			
1	B	630	Total	C	H	N	O	S	0	0	
			10242	3235	5139	856	989	23			

There are 6 discrepancies between the modelled and reference sequences:

Chain	Residue	Modelled	Actual	Comment	Reference
A	-2	GLY	-	expression tag	UNP P08238
A	-1	GLY	-	expression tag	UNP P08238
A	0	PHE	-	expression tag	UNP P08238
B	-2	GLY	-	expression tag	UNP P08238
B	-1	GLY	-	expression tag	UNP P08238
B	0	PHE	-	expression tag	UNP P08238

- Molecule 2 is a protein called HSP90 CO-CHAPERONE CDC37.

Mol	Chain	Residues	Atoms							AltConf	Trace
			Total	C	H	N	O	P	S		
2	E	259	Total	C	H	N	O	P	S	0	0
			4307	1358	2125	383	425	1	15		

- Molecule 3 is a protein called CYCLIN-DEPENDENT KINASE 4.

Mol	Chain	Residues	Atoms						AltConf	Trace
			Total	C	H	N	O	S		
3	K	209	Total	C	H	N	O	S	0	0
			3343	1077	1678	284	295	9		

There are 7 discrepancies between the modelled and reference sequences:

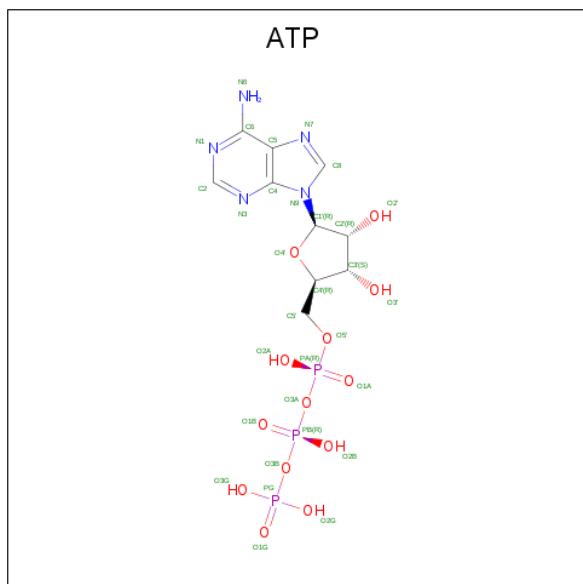
Chain	Residue	Modelled	Actual	Comment	Reference
K	-6	GLY	-	expression tag	UNP P11802
K	-5	ALA	-	expression tag	UNP P11802
K	-4	MET	-	expression tag	UNP P11802

Continued on next page...

Continued from previous page...

Chain	Residue	Modelled	Actual	Comment	Reference
K	-3	ASP	-	expression tag	UNP P11802
K	-2	PRO	-	expression tag	UNP P11802
K	-1	GLU	-	expression tag	UNP P11802
K	0	PHE	-	expression tag	UNP P11802

- Molecule 4 is ADENOSINE-5'-TRIPHOSPHATE (three-letter code: ATP) (formula: $C_{10}H_{16}N_5O_{13}P_3$).



Mol	Chain	Residues	Atoms				AltConf	
			Total	C	N	O		P
4	A	1	Total	C	N	O	P	0
			31	10	5	13	3	
4	B	1	Total	C	N	O	P	0
			31	10	5	13	3	

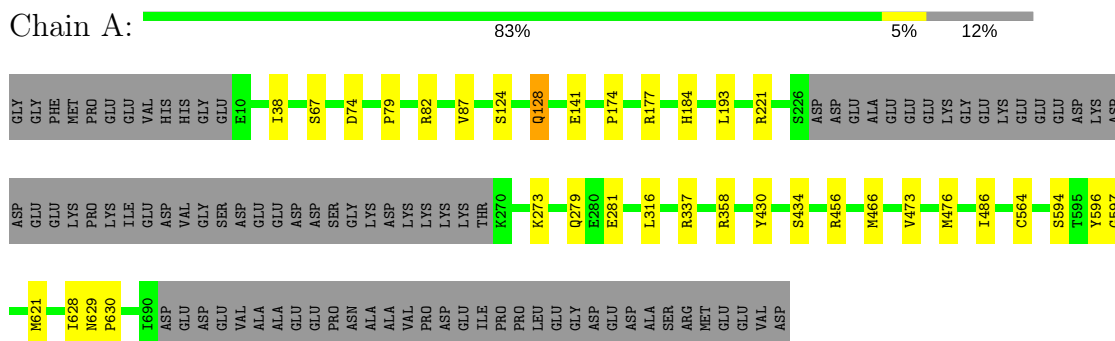
- Molecule 5 is MAGNESIUM ION (three-letter code: MG) (formula: Mg).

Mol	Chain	Residues	Atoms		AltConf
5	B	1	Total	Mg	0
			1	1	
5	A	1	Total	Mg	0
			1	1	

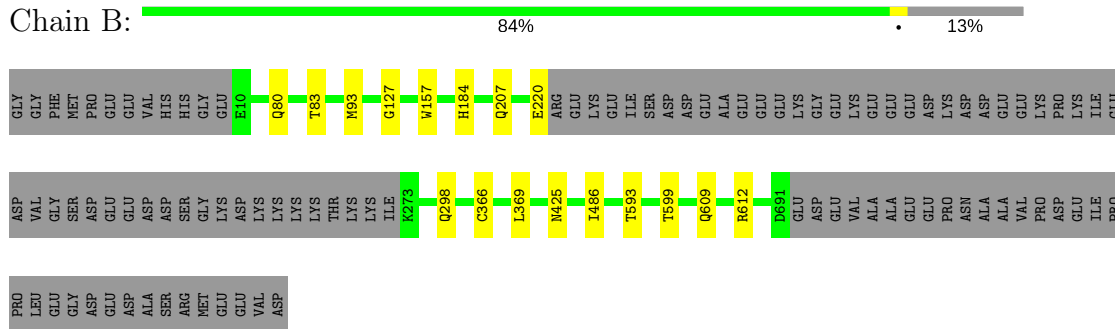
3 Residue-property plots [i](#)

These plots are drawn for all protein, RNA and DNA chains in the entry. The first graphic for a chain summarises the proportions of the various outlier classes displayed in the second graphic. The second graphic shows the sequence view annotated by issues in geometry. Residues are color-coded according to the number of geometric quality criteria for which they contain at least one outlier: green = 0, yellow = 1, orange = 2 and red = 3 or more. Stretches of 2 or more consecutive residues without any outlier are shown as a green connector. Residues present in the sample, but not in the model, are shown in grey.

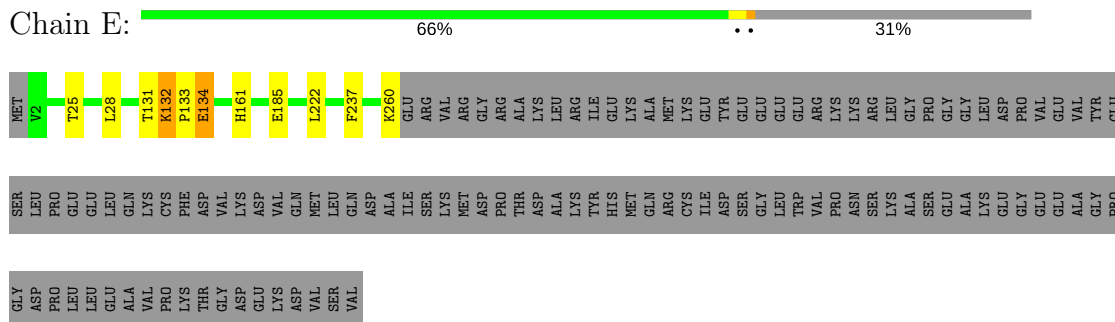
- Molecule 1: HEAT SHOCK PROTEIN HSP 90 BETA



- Molecule 1: HEAT SHOCK PROTEIN HSP 90 BETA

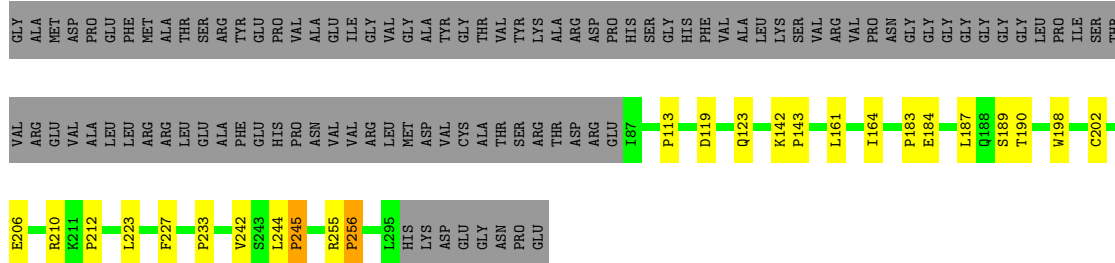


- Molecule 2: HSP90 CO-CHAPERONE CDC37



- Molecule 3: CYCLIN-DEPENDENT KINASE 4





4 Experimental information

Property	Value	Source
Reconstruction method	SINGLE PARTICLE	Depositor
Imposed symmetry	POINT, C1	Depositor
Number of particles used	114683	Depositor
Resolution determination method	Not provided	Depositor
CTF correction method	Not provided	Depositor
Microscope	FEI TITAN KRIOS	Depositor
Voltage (kV)	300	Depositor
Electron dose ($e^-/\text{\AA}^2$)	44	Depositor
Minimum defocus (nm)	1400	Depositor
Maximum defocus (nm)	3800	Depositor
Magnification	22500	Depositor
Image detector	GATAN K2 SUMMIT (4k x 4k)	Depositor

5 Model quality [i](#)

5.1 Standard geometry [i](#)

Bond lengths and bond angles in the following residue types are not validated in this section: MG, ATP, SEP

The Z score for a bond length (or angle) is the number of standard deviations the observed value is removed from the expected value. A bond length (or angle) with $|Z| > 5$ is considered an outlier worth inspection. RMSZ is the root-mean-square of all Z scores of the bond lengths (or angles).

Mol	Chain	Bond lengths		Bond angles	
		RMSZ	# Z >2	RMSZ	# Z >2
1	A	0.92	0/5257	0.56	0/7062
1	B	0.91	0/5187	0.56	0/6972
2	E	0.98	1/2209 (0.0%)	0.50	0/2955
3	K	0.81	1/1711 (0.1%)	0.60	0/2330
All	All	0.92	2/14364 (0.0%)	0.55	0/19319

All (2) bond length outliers are listed below:

Mol	Chain	Res	Type	Atoms	Z	Observed(Å)	Ideal(Å)
2	E	134	GLU	CD-OE2	-5.07	1.20	1.25
3	K	184	GLU	CD-OE2	-5.06	1.20	1.25

There are no bond angle outliers.

There are no chirality outliers.

There are no planarity outliers.

5.2 Too-close contacts [i](#)

In the following table, the Non-H and H(model) columns list the number of non-hydrogen atoms and hydrogen atoms in the chain respectively. The H(added) column lists the number of hydrogen atoms added and optimized by MolProbity. The Clashes column lists the number of clashes within the asymmetric unit, whereas Symm-Clashes lists symmetry related clashes.

Mol	Chain	Non-H	H(model)	H(added)	Clashes	Symm-Clashes
1	A	5173	5226	5224	20	0
1	B	5103	5139	5137	22	0
2	E	2182	2125	2124	13	0
3	K	1665	1678	1677	14	0
4	A	31	0	12	3	0

Continued on next page...

Continued from previous page...

Mol	Chain	Non-H	H(model)	H(added)	Clashes	Symm-Clashes
4	B	31	0	12	2	0
5	A	1	0	0	0	0
5	B	1	0	0	0	0
All	All	14187	14168	14186	72	0

The all-atom clashscore is defined as the number of clashes found per 1000 atoms (including hydrogen atoms). The all-atom clashscore for this structure is 3.

All (72) close contacts within the same asymmetric unit are listed below, sorted by their clash magnitude.

Atom-1	Atom-2	Interatomic distance (Å)	Clash overlap (Å)
1:B:609:GLN:HB3	1:B:612:ARG:CG	1.78	1.14
1:B:609:GLN:HB3	1:B:612:ARG:HG2	1.47	0.94
1:B:609:GLN:CG	1:B:612:ARG:HG2	1.96	0.94
1:B:609:GLN:CB	1:B:612:ARG:HG2	1.99	0.92
1:B:609:GLN:HB3	1:B:612:ARG:HG3	1.51	0.89
1:B:609:GLN:CB	1:B:612:ARG:CG	2.58	0.80
4:A:1691:ATP:O2A	4:A:1691:ATP:O2G	2.00	0.79
2:E:132:LYS:HB3	2:E:133:PRO:HA	1.70	0.72
4:B:1692:ATP:O2G	4:B:1692:ATP:O2B	2.03	0.72
1:B:80:GLN:OE1	1:B:80:GLN:N	2.33	0.61
1:B:609:GLN:HG3	1:B:612:ARG:HG2	1.81	0.61
1:A:279:GLN:O	1:A:279:GLN:HG3	2.02	0.60
1:B:298:GLN:NE2	1:B:298:GLN:O	2.35	0.59
2:E:132:LYS:HB3	2:E:133:PRO:CA	2.33	0.57
1:A:221:ARG:HB2	1:A:273:LYS:HB2	1.86	0.57
2:E:131:THR:O	2:E:132:LYS:HB2	2.04	0.56
1:B:425:ASN:ND2	2:E:131:THR:OG1	2.39	0.56
1:B:609:GLN:HG2	1:B:612:ARG:CD	2.36	0.56
1:B:609:GLN:CG	1:B:612:ARG:CG	2.78	0.55
1:B:93:MET:SD	4:B:1692:ATP:H1'	2.48	0.54
2:E:132:LYS:CB	2:E:133:PRO:HA	2.38	0.53
1:A:124:SER:OG	1:A:358:ARG:NH1	2.42	0.53
3:K:189:SER:OG	3:K:190:THR:N	2.42	0.52
1:A:128:GLN:CD	1:A:128:GLN:O	2.48	0.52
1:A:128:GLN:O	1:A:128:GLN:OE1	2.27	0.52
4:A:1691:ATP:H2'	4:A:1691:ATP:N3	2.24	0.51
1:A:486:ILE:O	1:A:486:ILE:HG23	2.10	0.51
3:K:206:GLU:O	3:K:210:ARG:N	2.44	0.50
4:A:1691:ATP:O3A	4:A:1691:ATP:O1G	2.30	0.50
2:E:131:THR:O	2:E:132:LYS:CB	2.59	0.49

Continued on next page...

Continued from previous page...

Atom-1	Atom-2	Interatomic distance (Å)	Clash overlap (Å)
1:B:157:TRP:HE3	1:B:157:TRP:O	1.96	0.49
1:B:609:GLN:HG2	1:B:612:ARG:HD3	1.94	0.49
2:E:260:LYS:O	2:E:260:LYS:HG2	2.13	0.48
2:E:222:LEU:HB2	2:E:237:PHE:CE2	2.48	0.48
1:A:38:ILE:C	1:A:38:ILE:HD12	2.34	0.48
2:E:161:HIS:O	2:E:161:HIS:HD2	1.97	0.48
3:K:142:LYS:HB2	3:K:143:PRO:CD	2.43	0.48
3:K:255:ARG:O	3:K:256:PRO:C	2.53	0.48
3:K:142:LYS:HB2	3:K:143:PRO:HD2	1.96	0.47
1:A:473:VAL:HA	1:A:476:MET:SD	2.54	0.47
1:B:366:CYS:HA	1:B:369:LEU:HB3	1.98	0.46
2:E:185:GLU:OE1	2:E:185:GLU:N	2.38	0.46
3:K:161:LEU:HA	3:K:164:ILE:HG12	1.98	0.46
1:A:141:GLU:N	1:A:184:HIS:O	2.48	0.46
1:B:220:GLU:O	1:B:220:GLU:HG2	2.17	0.45
1:A:594:SER:OG	1:A:596:TYR:O	2.34	0.45
3:K:244:LEU:HB3	3:K:245:PRO:HD2	1.98	0.45
1:A:79:PRO:HA	1:A:193:LEU:HD13	1.97	0.45
1:A:597:GLY:HA2	1:A:621:MET:SD	2.57	0.45
1:A:430:TYR:O	1:A:434:SER:N	2.50	0.45
1:A:456:ARG:HB3	1:A:466:MET:HG2	1.99	0.45
3:K:183:PRO:O	3:K:187:LEU:N	2.49	0.45
3:K:210:ARG:O	3:K:210:ARG:HG2	2.17	0.45
2:E:25:THR:HA	2:E:28:LEU:HB3	1.99	0.44
3:K:223:LEU:HB3	3:K:227:PHE:CE2	2.53	0.44
1:A:67:SER:OG	1:A:177:ARG:NH2	2.50	0.44
1:B:207:GLN:OE1	1:B:207:GLN:N	2.33	0.44
3:K:183:PRO:O	3:K:187:LEU:HG	2.18	0.43
2:E:161:HIS:CD2	2:E:161:HIS:C	2.91	0.43
3:K:187:LEU:HD22	3:K:242:VAL:HG13	2.00	0.43
1:B:486:ILE:O	1:B:486:ILE:HG23	2.18	0.43
1:B:593:THR:HG21	1:B:599:THR:HA	2.00	0.43
1:B:157:TRP:CE3	1:B:157:TRP:O	2.72	0.42
2:E:133:PRO:O	2:E:134:GLU:HB2	2.20	0.42
1:A:316:LEU:HB2	1:A:337:ARG:HA	2.02	0.41
1:A:82:ARG:O	1:A:82:ARG:HG2	2.19	0.41
1:A:629:ASN:HA	1:A:630:PRO:HD2	1.87	0.41
3:K:198:TRP:CH2	3:K:202:CYS:SG	3.10	0.41
1:B:83:THR:HG22	1:B:184:HIS:HA	2.03	0.41
1:A:564:CYS:SG	1:A:628:ILE:HD12	2.62	0.40
3:K:119:ASP:O	3:K:123:GLN:HG2	2.21	0.40

Continued on next page...

Continued from previous page...

Atom-1	Atom-2	Interatomic distance (Å)	Clash overlap (Å)
1:A:74:ASP:HB2	1:A:87:VAL:HB	2.02	0.40

There are no symmetry-related clashes.

5.3 Torsion angles [i](#)

5.3.1 Protein backbone [i](#)

In the following table, the Percentiles column shows the percent Ramachandran outliers of the chain as a percentile score with respect to all PDB entries followed by that with respect to all EM entries.

The Analysed column shows the number of residues for which the backbone conformation was analysed, and the total number of residues.

Mol	Chain	Analysed	Favoured	Allowed	Outliers	Percentiles	
1	A	634/727 (87%)	607 (96%)	24 (4%)	3 (0%)	31	74
1	B	626/727 (86%)	612 (98%)	13 (2%)	1 (0%)	49	85
2	E	256/378 (68%)	242 (94%)	13 (5%)	1 (0%)	36	77
3	K	207/310 (67%)	185 (89%)	17 (8%)	5 (2%)	6	40
All	All	1723/2142 (80%)	1646 (96%)	67 (4%)	10 (1%)	31	70

All (10) Ramachandran outliers are listed below:

Mol	Chain	Res	Type
2	E	132	LYS
3	K	256	PRO
1	A	174	PRO
1	A	281	GLU
3	K	113	PRO
3	K	212	PRO
3	K	233	PRO
1	A	128	GLN
3	K	245	PRO
1	B	127	GLY

5.3.2 Protein sidechains [i](#)

In the following table, the Percentiles column shows the percent sidechain outliers of the chain as a percentile score with respect to all PDB entries followed by that with respect to all EM entries.

The Analysed column shows the number of residues for which the sidechain conformation was analysed, and the total number of residues.

Mol	Chain	Analysed	Rotameric	Outliers	Percentiles	
1	A	577/653 (88%)	577 (100%)	0	100	100
1	B	569/653 (87%)	569 (100%)	0	100	100
2	E	238/340 (70%)	238 (100%)	0	100	100
3	K	183/262 (70%)	183 (100%)	0	100	100
All	All	1567/1908 (82%)	1567 (100%)	0	100	100

There are no protein residues with a non-rotameric sidechain to report.

Some sidechains can be flipped to improve hydrogen bonding and reduce clashes. All (3) such sidechains are listed below:

Mol	Chain	Res	Type
1	B	425	ASN
2	E	161	HIS
3	K	98	GLN

5.3.3 RNA [i](#)

There are no RNA molecules in this entry.

5.4 Non-standard residues in protein, DNA, RNA chains [i](#)

1 non-standard protein/DNA/RNA residue is modelled in this entry.

In the following table, the Counts columns list the number of bonds (or angles) for which Mogul statistics could be retrieved, the number of bonds (or angles) that are observed in the model and the number of bonds (or angles) that are defined in the Chemical Component Dictionary. The Link column lists molecule types, if any, to which the group is linked. The Z score for a bond length (or angle) is the number of standard deviations the observed value is removed from the expected value. A bond length (or angle) with $|Z| > 2$ is considered an outlier worth inspection. RMSZ is the root-mean-square of all Z scores of the bond lengths (or angles).

Mol	Type	Chain	Res	Link	Bond lengths			Bond angles		
					Counts	RMSZ	# Z > 2	Counts	RMSZ	# Z > 2
2	SEP	E	13	2	9,9,10	1.46	2 (22%)	9,12,14	1.26	1 (11%)

In the following table, the Chirals column lists the number of chiral outliers, the number of chiral centers analysed, the number of these observed in the model and the number defined in the Chemical Component Dictionary. Similar counts are reported in the Torsion and Rings columns. '-' means no outliers of that kind were identified.

Mol	Type	Chain	Res	Link	Chirals	Torsions	Rings
2	SEP	E	13	2	-	0/5/8/10	0/0/0/0

All (2) bond length outliers are listed below:

Mol	Chain	Res	Type	Atoms	Z	Observed(Å)	Ideal(Å)
2	E	13	SEP	CA-C	2.15	1.53	1.50
2	E	13	SEP	P-O1P	3.03	1.60	1.50

All (1) bond angle outliers are listed below:

Mol	Chain	Res	Type	Atoms	Z	Observed(°)	Ideal(°)
2	E	13	SEP	OG-CB-CA	2.82	110.95	108.17

There are no chirality outliers.

There are no torsion outliers.

There are no ring outliers.

No monomer is involved in short contacts.

5.5 Carbohydrates [i](#)

There are no carbohydrates in this entry.

5.6 Ligand geometry [i](#)

Of 4 ligands modelled in this entry, 2 are monoatomic - leaving 2 for Mogul analysis.

In the following table, the Counts columns list the number of bonds (or angles) for which Mogul statistics could be retrieved, the number of bonds (or angles) that are observed in the model and the number of bonds (or angles) that are defined in the Chemical Component Dictionary. The Link column lists molecule types, if any, to which the group is linked. The Z score for a bond length (or angle) is the number of standard deviations the observed value is removed from the

expected value. A bond length (or angle) with $|Z| > 2$ is considered an outlier worth inspection. RMSZ is the root-mean-square of all Z scores of the bond lengths (or angles).

Mol	Type	Chain	Res	Link	Bond lengths			Bond angles		
					Counts	RMSZ	# $ Z > 2$	Counts	RMSZ	# $ Z > 2$
4	ATP	A	1691	5	27,33,33	1.13	2 (7%)	27,52,52	2.25	5 (18%)
4	ATP	B	1692	5	27,33,33	1.05	1 (3%)	27,52,52	2.25	4 (14%)

In the following table, the Chirals column lists the number of chiral outliers, the number of chiral centers analysed, the number of these observed in the model and the number defined in the Chemical Component Dictionary. Similar counts are reported in the Torsion and Rings columns. '-' means no outliers of that kind were identified.

Mol	Type	Chain	Res	Link	Chirals	Torsions	Rings
4	ATP	A	1691	5	-	0/18/38/38	0/3/3/3
4	ATP	B	1692	5	-	0/18/38/38	0/3/3/3

All (3) bond length outliers are listed below:

Mol	Chain	Res	Type	Atoms	Z	Observed(Å)	Ideal(Å)
4	A	1691	ATP	O4'-C1'	2.17	1.44	1.41
4	A	1691	ATP	C5-C4	3.11	1.47	1.40
4	B	1692	ATP	C5-C4	3.23	1.47	1.40

All (9) bond angle outliers are listed below:

Mol	Chain	Res	Type	Atoms	Z	Observed(°)	Ideal(°)
4	A	1691	ATP	N3-C2-N1	-6.19	123.56	128.86
4	B	1692	ATP	N3-C2-N1	-6.18	123.58	128.86
4	A	1691	ATP	PB-O3B-PG	-6.13	112.03	132.63
4	B	1692	ATP	PA-O3A-PB	-6.09	112.15	132.63
4	B	1692	ATP	PB-O3B-PG	-5.43	114.39	132.63
4	A	1691	ATP	PA-O3A-PB	-5.34	114.67	132.63
4	B	1692	ATP	C4-C5-N7	-2.55	106.94	109.41
4	A	1691	ATP	C4-C5-N7	-2.43	107.06	109.41
4	A	1691	ATP	O2B-PB-O1B	2.06	122.58	112.14

There are no chirality outliers.

There are no torsion outliers.

There are no ring outliers.

2 monomers are involved in 5 short contacts:

Mol	Chain	Res	Type	Clashes	Symm-Clashes
4	A	1691	ATP	3	0
4	B	1692	ATP	2	0

5.7 Other polymers [i](#)

There are no such residues in this entry.

5.8 Polymer linkage issues [i](#)

There are no chain breaks in this entry.