



Full wwPDB X-ray Structure Validation Report ⓘ

Oct 16, 2023 – 02:19 AM EDT

PDB ID : 8FW1
Title : Gluconobacter Ene-Reductase (GluER) mutant - PagER
Authors : Dahagam, S.; Page, C.; Patterson, M.G.; Hyster, T.K.
Deposited on : 2023-01-20
Resolution : 1.50 Å(reported)

This is a Full wwPDB X-ray Structure Validation Report for a publicly released PDB entry.

We welcome your comments at validation@mail.wwpdb.org

A user guide is available at

<https://www.wwpdb.org/validation/2017/XrayValidationReportHelp>

with specific help available everywhere you see the ⓘ symbol.

The types of validation reports are described at

<http://www.wwpdb.org/validation/2017/FAQs#types>.

The following versions of software and data (see [references ⓘ](#)) were used in the production of this report:

MolProbity : 4.02b-467
Mogul : 1.8.5 (274361), CSD as541be (2020)
Xtriage (Phenix) : 1.13
EDS : 2.36
buster-report : 1.1.7 (2018)
Percentile statistics : 20191225.v01 (using entries in the PDB archive December 25th 2019)
Refmac : 5.8.0158
CCP4 : 7.0.044 (Gargrove)
Ideal geometry (proteins) : Engh & Huber (2001)
Ideal geometry (DNA, RNA) : Parkinson et al. (1996)
Validation Pipeline (wwPDB-VP) : 2.36

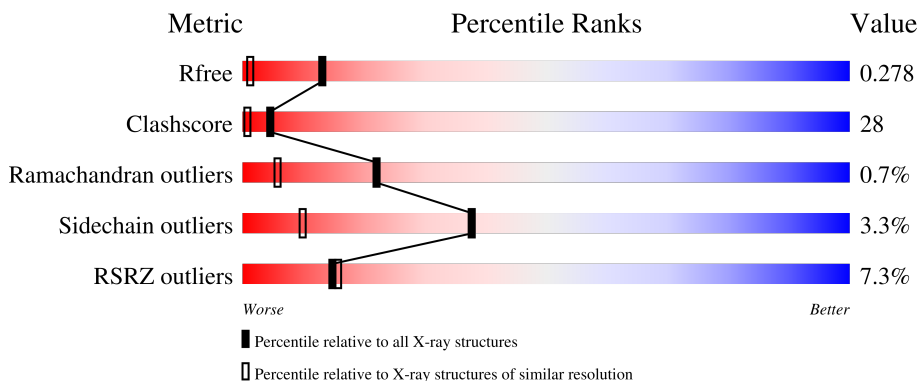
1 Overall quality at a glance

The following experimental techniques were used to determine the structure:

X-RAY DIFFRACTION

The reported resolution of this entry is 1.50 Å.

Percentile scores (ranging between 0-100) for global validation metrics of the entry are shown in the following graphic. The table shows the number of entries on which the scores are based.



Metric	Whole archive (#Entries)	Similar resolution (#Entries, resolution range(Å))
R_{free}	130704	2936 (1.50-1.50)
Clashscore	141614	3144 (1.50-1.50)
Ramachandran outliers	138981	3066 (1.50-1.50)
Sidechain outliers	138945	3064 (1.50-1.50)
RSRZ outliers	127900	2884 (1.50-1.50)

The table below summarises the geometric issues observed across the polymeric chains and their fit to the electron density. The red, orange, yellow and green segments of the lower bar indicate the fraction of residues that contain outliers for ≥ 3 , 2, 1 and 0 types of geometric quality criteria respectively. A grey segment represents the fraction of residues that are not modelled. The numeric value for each fraction is indicated below the corresponding segment, with a dot representing fractions $\leq 5\%$. The upper red bar (where present) indicates the fraction of residues that have poor fit to the electron density. The numeric value is given above the bar.

Mol	Chain	Length	Quality of chain
1	A	362	
1	B	362	
1	C	362	

The following table lists non-polymeric compounds, carbohydrate monomers and non-standard residues in protein, DNA, RNA chains that are outliers for geometric or electron-density-fit criteria:

Mol	Type	Chain	Res	Chirality	Geometry	Clashes	Electron density
2	FMN	A	401	-	-	X	-

2 Entry composition i

There are 3 unique types of molecules in this entry. The entry contains 8916 atoms, of which 0 are hydrogens and 0 are deuteriums.

In the tables below, the ZeroOcc column contains the number of atoms modelled with zero occupancy, the AltConf column contains the number of residues with at least one atom in alternate conformation and the Trace column contains the number of residues modelled with at most 2 atoms.

- Molecule 1 is a protein called N-ethylmaleimide reductase.

Mol	Chain	Residues	Atoms					ZeroOcc	AltConf	Trace
			Total	C	N	O	S			
1	A	362	2785	1762	494	520	9	24	0	0
1	B	362	2785	1762	494	520	9	11	0	0
1	C	362	2785	1762	494	520	9	11	0	0

There are 24 discrepancies between the modelled and reference sequences:

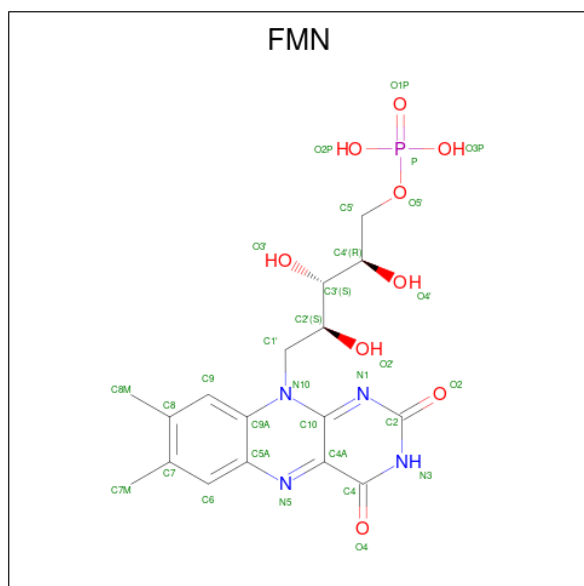
Chain	Residue	Modelled	Actual	Comment	Reference
A	25	LEU	THR	conflict	UNP A1E8I9
A	36	ALA	THR	conflict	UNP A1E8I9
A	231	VAL	THR	conflict	UNP A1E8I9
A	232	TRP	GLN	conflict	UNP A1E8I9
A	268	ASP	THR	conflict	UNP A1E8I9
A	270	MET	GLY	conflict	UNP A1E8I9
A	343	PHE	TYR	conflict	UNP A1E8I9
A	362	ASN	-	expression tag	UNP A1E8I9
B	25	LEU	THR	conflict	UNP A1E8I9
B	36	ALA	THR	conflict	UNP A1E8I9
B	231	VAL	THR	conflict	UNP A1E8I9
B	232	TRP	GLN	conflict	UNP A1E8I9
B	268	ASP	THR	conflict	UNP A1E8I9
B	270	MET	GLY	conflict	UNP A1E8I9
B	343	PHE	TYR	conflict	UNP A1E8I9
B	362	ASN	-	expression tag	UNP A1E8I9
C	25	LEU	THR	conflict	UNP A1E8I9
C	36	ALA	THR	conflict	UNP A1E8I9
C	231	VAL	THR	conflict	UNP A1E8I9
C	232	TRP	GLN	conflict	UNP A1E8I9
C	268	ASP	THR	conflict	UNP A1E8I9
C	270	MET	GLY	conflict	UNP A1E8I9
C	343	PHE	TYR	conflict	UNP A1E8I9

Continued on next page...

Continued from previous page...

Chain	Residue	Modelled	Actual	Comment	Reference
C	362	ASN	-	expression tag	UNP A1E8I9

- Molecule 2 is FLAVIN MONONUCLEOTIDE (three-letter code: FMN) (formula: C₁₇H₂₁N₄O₉P) (labeled as "Ligand of Interest" by depositor).



Mol	Chain	Residues	Atoms					ZeroOcc	AltConf
			Total	C	N	O	P		
2	A	1	Total	C	N	O	P	0	0
			31	17	4	9	1		
2	B	1	Total	C	N	O	P	0	0
			31	17	4	9	1		
2	C	1	Total	C	N	O	P	0	0
			31	17	4	9	1		

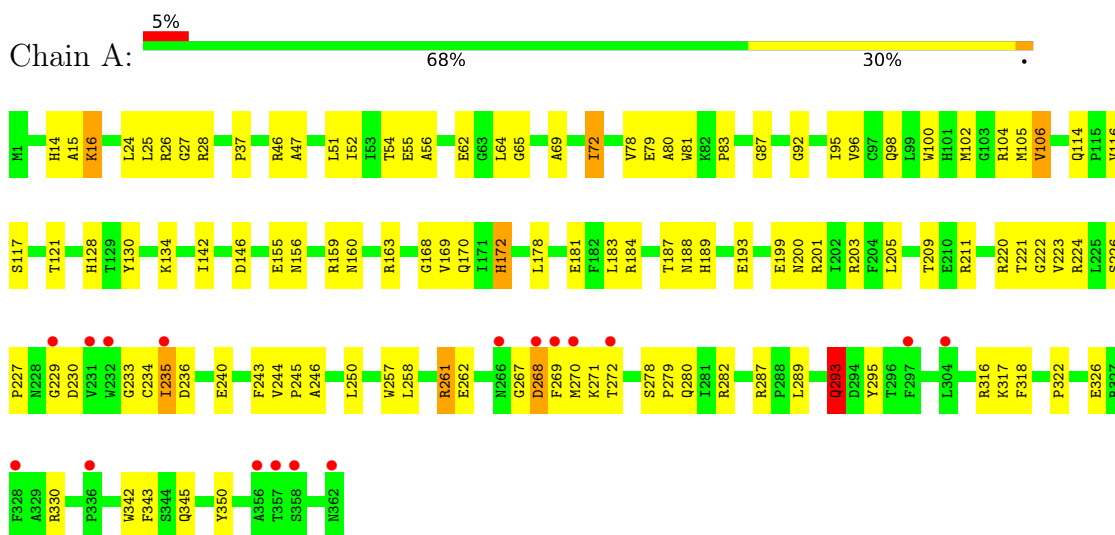
- Molecule 3 is water.

Mol	Chain	Residues	Atoms		ZeroOcc	AltConf
3	A	183	Total	O	0	0
			183	183		
3	B	64	Total	O	0	0
			64	64		
3	C	221	Total	O	0	0
			221	221		

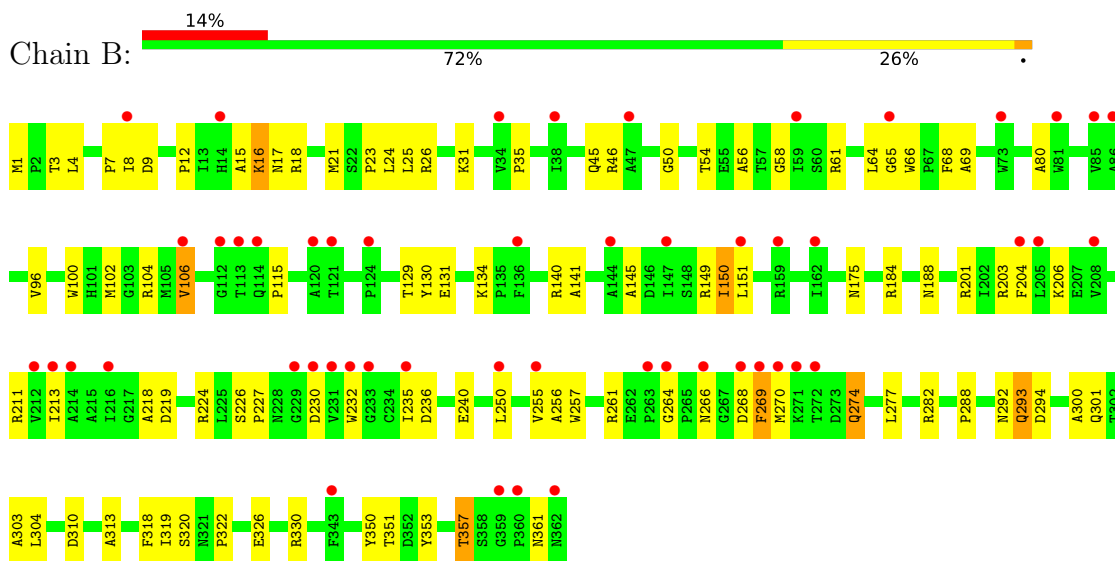
3 Residue-property plots [i](#)

These plots are drawn for all protein, RNA, DNA and oligosaccharide chains in the entry. The first graphic for a chain summarises the proportions of the various outlier classes displayed in the second graphic. The second graphic shows the sequence view annotated by issues in geometry and electron density. Residues are color-coded according to the number of geometric quality criteria for which they contain at least one outlier: green = 0, yellow = 1, orange = 2 and red = 3 or more. A red dot above a residue indicates a poor fit to the electron density ($RSRZ > 2$). Stretches of 2 or more consecutive residues without any outlier are shown as a green connector. Residues present in the sample, but not in the model, are shown in grey.

- Molecule 1: N-ethylmaleimide reductase

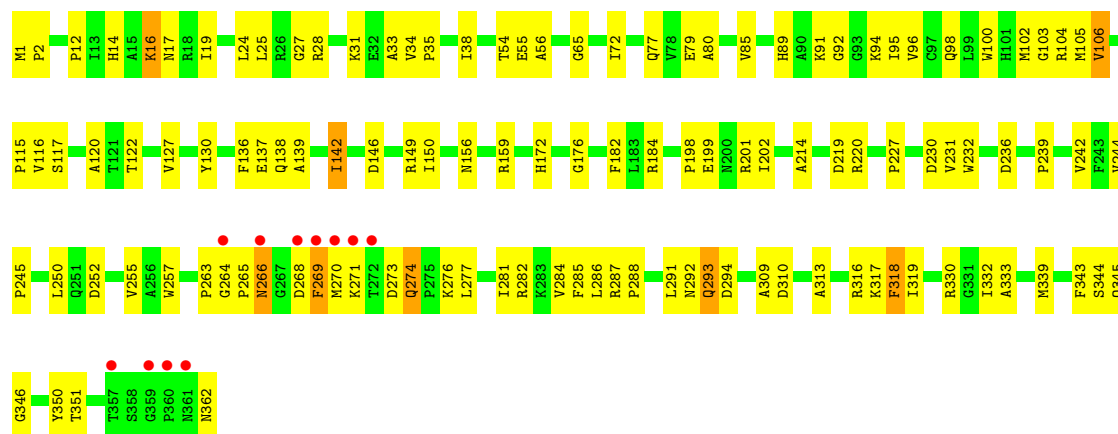


- Molecule 1: N-ethylmaleimide reductase



- Molecule 1: N-ethylmaleimide reductase





4 Data and refinement statistics i

Property	Value	Source
Space group	P 1	Depositor
Cell constants a, b, c, α , β , γ	50.16Å 51.85Å 144.94Å 90.51° 90.11° 114.86°	Depositor
Resolution (Å)	45.51 – 1.50 45.52 – 1.50	Depositor EDS
% Data completeness (in resolution range)	96.1 (45.51-1.50) 93.1 (45.52-1.50)	Depositor EDS
R_{merge}	0.10	Depositor
R_{sym}	(Not available)	Depositor
$\langle I/\sigma(I) \rangle$ ¹	1.75 (at 1.50Å)	Xtriage
Refinement program	PHENIX 1.20.1_4487	Depositor
R, R_{free}	0.268 , 0.273 0.273 , 0.278	Depositor DCC
R_{free} test set	1988 reflections (0.97%)	wwPDB-VP
Wilson B-factor (Å ²)	15.0	Xtriage
Anisotropy	0.001	Xtriage
Bulk solvent k_{sol} (e/Å ³), B_{sol} (Å ²)	0.32 , 13.3	EDS
L-test for twinning ²	$\langle L \rangle = 0.42$, $\langle L^2 \rangle = 0.24$	Xtriage
Estimated twinning fraction	0.360 for -h,-k,l 0.076 for k,h,-l 0.078 for -k,-h,-l	Xtriage
F_o, F_c correlation	0.90	EDS
Total number of atoms	8916	wwPDB-VP
Average B, all atoms (Å ²)	16.0	wwPDB-VP

Xtriage's analysis on translational NCS is as follows: *The largest off-origin peak in the Patterson function is 4.48% of the height of the origin peak. No significant pseudotranslation is detected.*

¹Intensities estimated from amplitudes.

²Theoretical values of $\langle |L| \rangle$, $\langle L^2 \rangle$ for acentric reflections are 0.5, 0.333 respectively for untwinned datasets, and 0.375, 0.2 for perfectly twinned datasets.

5 Model quality [i](#)

5.1 Standard geometry [i](#)

Bond lengths and bond angles in the following residue types are not validated in this section: FMN

The Z score for a bond length (or angle) is the number of standard deviations the observed value is removed from the expected value. A bond length (or angle) with $|Z| > 5$ is considered an outlier worth inspection. RMSZ is the root-mean-square of all Z scores of the bond lengths (or angles).

Mol	Chain	Bond lengths		Bond angles	
		RMSZ	# Z >5	RMSZ	# Z >5
1	A	0.26	0/2856	0.56	0/3885
1	B	0.26	0/2856	0.55	0/3885
1	C	0.27	0/2856	0.57	0/3885
All	All	0.26	0/8568	0.56	0/11655

Chiral center outliers are detected by calculating the chiral volume of a chiral center and verifying if the center is modelled as a planar moiety or with the opposite hand. A planarity outlier is detected by checking planarity of atoms in a peptide group, atoms in a mainchain group or atoms of a sidechain that are expected to be planar.

Mol	Chain	#Chirality outliers	#Planarity outliers
1	C	0	1

There are no bond length outliers.

There are no bond angle outliers.

There are no chirality outliers.

All (1) planarity outliers are listed below:

Mol	Chain	Res	Type	Group
1	C	266	ASN	Peptide

5.2 Too-close contacts [i](#)

In the following table, the Non-H and H(model) columns list the number of non-hydrogen atoms and hydrogen atoms in the chain respectively. The H(added) column lists the number of hydrogen atoms added and optimized by MolProbity. The Clashes column lists the number of clashes within the asymmetric unit, whereas Symm-Clashes lists symmetry-related clashes.

Mol	Chain	Non-H	H(model)	H(added)	Clashes	Symm-Clashes
1	A	2785	0	2733	185	0
1	B	2785	0	2733	104	0
1	C	2785	0	2732	181	0
2	A	31	0	17	15	0
2	B	31	0	18	1	0
2	C	31	0	19	2	0
3	A	183	0	0	141	0
3	B	64	0	0	57	0
3	C	221	0	0	137	1
All	All	8916	0	8252	471	1

The all-atom clashscore is defined as the number of clashes found per 1000 atoms (including hydrogen atoms). The all-atom clashscore for this structure is 28.

All (471) close contacts within the same asymmetric unit are listed below, sorted by their clash magnitude.

Atom-1	Atom-2	Interatomic distance (Å)	Clash overlap (Å)
1:B:261:ARG:HD3	3:B:511:HOH:O	1.25	1.32
1:C:281:ILE:HG13	3:C:525:HOH:O	1.21	1.31
1:A:96:VAL:HB	3:A:504:HOH:O	1.31	1.29
1:A:244:VAL:HG23	3:A:520:HOH:O	1.32	1.25
1:B:330:ARG:HG3	3:B:506:HOH:O	1.19	1.25
1:A:200:ASN:HA	3:A:508:HOH:O	1.30	1.25
1:B:21:MET:SD	3:B:558:HOH:O	1.90	1.25
1:A:184:ARG:HA	3:A:506:HOH:O	1.31	1.24
1:A:37:PRO:HA	3:A:529:HOH:O	1.35	1.24
1:A:156:ASN:HB3	3:A:647:HOH:O	1.36	1.23
1:C:16:LYS:HG2	3:C:509:HOH:O	1.39	1.21
1:A:243:PHE:HZ	3:A:522:HOH:O	1.23	1.21
1:C:198:PRO:HB2	3:C:513:HOH:O	1.42	1.20
1:C:122:THR:HG23	3:C:501:HOH:O	1.05	1.19
1:A:105:MET:SD	3:A:676:HOH:O	1.97	1.18
1:A:280:GLN:HG2	3:A:509:HOH:O	1.01	1.17
2:A:401:FMN:H6	3:A:513:HOH:O	1.42	1.16
1:C:274:GLN:HG3	3:C:517:HOH:O	1.45	1.16
1:B:230:ASP:HA	3:B:504:HOH:O	1.43	1.15
1:C:38:ILE:HG12	3:C:507:HOH:O	1.48	1.12
1:C:156:ASN:HB3	3:C:631:HOH:O	1.45	1.12
1:C:104:ARG:CA	3:C:511:HOH:O	1.96	1.11
1:C:288:PRO:HA	3:C:526:HOH:O	1.50	1.10
1:A:168:GLY:C	3:A:504:HOH:O	1.88	1.10
1:A:130:TYR:C	3:A:501:HOH:O	1.91	1.09

Continued on next page...

Continued from previous page...

Atom-1	Atom-2	Interatomic distance (Å)	Clash overlap (Å)
1:B:361:ASN:HB2	3:B:501:HOH:O	1.52	1.09
1:A:250:LEU:HD13	3:A:664:HOH:O	1.50	1.08
1:B:361:ASN:CB	3:B:501:HOH:O	2.00	1.08
1:A:169:VAL:N	3:A:504:HOH:O	1.84	1.07
1:C:105:MET:SD	3:C:714:HOH:O	2.12	1.04
1:A:258:LEU:HD13	3:A:664:HOH:O	1.54	1.04
1:C:17:ASN:ND2	3:C:509:HOH:O	1.89	1.04
1:A:261:ARG:NH2	3:A:511:HOH:O	1.90	1.03
1:B:303:ALA:HB3	3:B:509:HOH:O	1.58	1.03
1:B:361:ASN:N	3:B:501:HOH:O	1.81	1.02
1:A:258:LEU:CD1	3:A:667:HOH:O	2.08	1.02
1:B:266:ASN:HA	3:B:517:HOH:O	1.59	1.02
1:C:104:ARG:N	3:C:511:HOH:O	1.92	1.01
1:A:47:ALA:HA	3:A:546:HOH:O	1.59	1.00
1:C:156:ASN:HB3	3:C:634:HOH:O	1.62	0.99
1:A:16:LYS:N	3:A:519:HOH:O	1.96	0.99
1:B:224:ARG:NE	3:B:508:HOH:O	1.95	0.99
1:A:199:GLU:HB2	3:A:565:HOH:O	1.60	0.98
1:B:224:ARG:HD2	3:B:508:HOH:O	1.63	0.98
1:A:221:THR:HG22	3:A:525:HOH:O	1.63	0.98
1:A:227:PRO:HB2	3:A:538:HOH:O	1.64	0.98
1:A:211:ARG:HD2	3:A:517:HOH:O	1.62	0.98
1:B:294:ASP:OD1	3:B:503:HOH:O	1.82	0.98
1:A:130:TYR:O	3:A:501:HOH:O	1.82	0.97
1:B:46:ARG:HB3	3:B:558:HOH:O	1.63	0.97
1:C:362:ASN:CG	3:C:502:HOH:O	2.00	0.97
1:C:294:ASP:OD1	3:C:503:HOH:O	1.82	0.97
1:A:15:ALA:CA	3:A:519:HOH:O	2.12	0.97
1:B:230:ASP:OD1	3:B:504:HOH:O	1.82	0.97
1:C:362:ASN:OD1	3:C:502:HOH:O	1.82	0.97
1:A:345:GLN:OE1	3:A:503:HOH:O	1.83	0.97
1:A:184:ARG:NE	3:A:522:HOH:O	1.97	0.96
1:A:244:VAL:N	3:A:520:HOH:O	1.97	0.96
1:C:137:GLU:O	3:C:501:HOH:O	1.82	0.96
1:B:9:ASP:O	3:B:502:HOH:O	1.82	0.96
1:A:15:ALA:C	3:A:519:HOH:O	2.04	0.95
1:C:77:GLN:HG2	3:C:524:HOH:O	1.62	0.95
1:A:193:GLU:OE1	3:A:502:HOH:O	1.83	0.95
1:A:183:LEU:O	3:A:506:HOH:O	1.85	0.95
1:B:224:ARG:CD	3:B:508:HOH:O	2.13	0.94
1:A:98:GLN:HE22	2:A:401:FMN:HM82	1.31	0.94

Continued on next page...

Continued from previous page...

Atom-1	Atom-2	Interatomic distance (Å)	Clash overlap (Å)
1:C:85:VAL:O	3:C:504:HOH:O	1.85	0.93
1:C:137:GLU:C	3:C:501:HOH:O	2.07	0.93
1:C:362:ASN:CB	3:C:502:HOH:O	2.15	0.93
1:A:258:LEU:HD13	3:A:667:HOH:O	1.68	0.93
1:A:188:ASN:CA	3:A:516:HOH:O	2.17	0.92
1:A:200:ASN:O	3:A:508:HOH:O	1.87	0.92
1:A:52:ILE:HD11	3:A:546:HOH:O	1.67	0.92
1:C:318:PHE:O	3:C:505:HOH:O	1.86	0.92
1:B:227:PRO:HG2	3:B:524:HOH:O	1.69	0.92
1:B:46:ARG:CB	3:B:558:HOH:O	2.15	0.91
1:C:274:GLN:CG	3:C:517:HOH:O	2.08	0.91
1:A:169:VAL:CA	3:A:504:HOH:O	2.16	0.91
1:C:79:GLU:CD	3:C:510:HOH:O	2.07	0.91
1:A:220:ARG:NH2	3:A:523:HOH:O	1.98	0.90
1:C:271:LYS:O	3:C:506:HOH:O	1.88	0.90
1:A:209:THR:OG1	3:A:505:HOH:O	1.84	0.90
1:A:240:GLU:OE2	3:A:509:HOH:O	1.88	0.90
1:C:199:GLU:CD	3:C:513:HOH:O	2.07	0.90
1:C:319:ILE:O	3:C:505:HOH:O	1.89	0.90
1:B:326:GLU:OE2	3:B:506:HOH:O	1.89	0.90
1:C:333:ALA:HA	3:C:521:HOH:O	1.70	0.90
1:C:17:ASN:OD1	3:C:508:HOH:O	1.89	0.90
1:C:33:ALA:C	3:C:524:HOH:O	2.10	0.90
1:C:149:ARG:NH2	3:C:520:HOH:O	2.04	0.90
1:A:267:GLY:O	3:A:510:HOH:O	1.89	0.90
1:C:345:GLN:NE2	3:C:519:HOH:O	2.03	0.90
1:A:92:GLY:HA3	3:A:530:HOH:O	1.72	0.89
1:C:351:THR:HG21	3:C:507:HOH:O	1.71	0.89
1:C:294:ASP:HB3	3:C:503:HOH:O	1.73	0.89
1:C:319:ILE:CA	3:C:505:HOH:O	2.20	0.89
1:C:38:ILE:O	3:C:507:HOH:O	1.88	0.89
1:A:240:GLU:HB2	3:A:533:HOH:O	1.70	0.89
1:C:232:TRP:NE1	3:C:516:HOH:O	2.01	0.88
1:A:199:GLU:OE2	3:A:512:HOH:O	1.90	0.88
1:C:79:GLU:OE2	3:C:510:HOH:O	1.92	0.88
1:A:160:ASN:OD1	3:A:514:HOH:O	1.92	0.88
1:A:189:HIS:CE1	3:A:542:HOH:O	2.25	0.88
1:C:89:HIS:ND1	3:C:504:HOH:O	2.04	0.88
1:C:294:ASP:CB	3:C:503:HOH:O	2.22	0.87
1:C:79:GLU:CA	3:C:510:HOH:O	2.23	0.87
1:C:34:VAL:N	3:C:524:HOH:O	2.07	0.86

Continued on next page...

Continued from previous page...

Atom-1	Atom-2	Interatomic distance (Å)	Clash overlap (Å)
1:C:79:GLU:N	3:C:510:HOH:O	2.08	0.86
1:C:319:ILE:HA	3:C:505:HOH:O	1.74	0.86
1:C:281:ILE:N	3:C:525:HOH:O	2.07	0.86
1:C:138:GLN:CG	3:C:531:HOH:O	2.21	0.86
1:A:222:GLY:C	3:A:525:HOH:O	2.14	0.85
1:B:140:ARG:NH1	3:B:507:HOH:O	1.97	0.85
1:A:250:LEU:CD1	3:A:667:HOH:O	2.24	0.85
1:A:181:GLU:O	3:A:516:HOH:O	1.94	0.85
1:A:200:ASN:CA	3:A:508:HOH:O	1.98	0.85
1:A:155:GLU:HB2	3:A:517:HOH:O	1.77	0.85
1:A:169:VAL:O	3:A:515:HOH:O	1.92	0.85
1:C:34:VAL:CA	3:C:524:HOH:O	2.24	0.85
1:A:155:GLU:OE1	3:A:517:HOH:O	1.95	0.84
1:C:79:GLU:CG	3:C:510:HOH:O	2.25	0.84
1:B:301:GLN:N	3:B:516:HOH:O	2.11	0.84
1:B:141:ALA:O	3:B:507:HOH:O	1.95	0.84
1:C:319:ILE:C	3:C:505:HOH:O	2.15	0.84
1:C:346:GLY:HA3	3:C:515:HOH:O	1.77	0.84
1:A:80:ALA:HA	3:A:586:HOH:O	1.77	0.83
1:A:114:GLN:OE1	3:A:518:HOH:O	1.95	0.83
1:C:219:ASP:CG	3:C:528:HOH:O	2.17	0.83
1:C:220:ARG:HG3	3:C:528:HOH:O	1.77	0.83
1:B:46:ARG:HD3	3:B:558:HOH:O	1.78	0.83
1:C:17:ASN:CG	3:C:508:HOH:O	2.14	0.83
1:A:188:ASN:N	3:A:516:HOH:O	2.11	0.83
1:C:199:GLU:OE2	3:C:513:HOH:O	1.96	0.83
2:A:401:FMN:C2	3:A:532:HOH:O	2.26	0.82
1:A:130:TYR:O	3:A:521:HOH:O	1.97	0.82
1:C:27:GLY:O	1:C:345:GLN:NE2	2.13	0.82
1:A:170:GLN:HA	3:A:515:HOH:O	1.79	0.81
1:C:345:GLN:O	3:C:515:HOH:O	1.98	0.81
1:B:45:GLN:O	3:B:510:HOH:O	1.99	0.81
1:B:300:ALA:O	3:B:509:HOH:O	1.97	0.81
1:C:227:PRO:HG2	3:C:551:HOH:O	1.78	0.81
1:A:222:GLY:O	3:A:525:HOH:O	1.98	0.81
1:A:227:PRO:C	3:A:538:HOH:O	2.18	0.81
2:A:401:FMN:N1	3:A:532:HOH:O	2.13	0.81
1:C:17:ASN:N	3:C:509:HOH:O	2.13	0.81
1:A:271:LYS:O	3:A:524:HOH:O	1.98	0.81
1:C:286:LEU:O	3:C:514:HOH:O	1.97	0.81
1:A:268:ASP:O	3:A:510:HOH:O	1.98	0.81

Continued on next page...

Continued from previous page...

Atom-1	Atom-2	Interatomic distance (Å)	Clash overlap (Å)
1:B:175:ASN:OD1	3:B:511:HOH:O	1.99	0.80
1:C:85:VAL:HG12	3:C:504:HOH:O	1.80	0.80
1:A:211:ARG:NH2	3:A:534:HOH:O	2.14	0.79
1:A:205:LEU:HD11	3:A:505:HOH:O	1.82	0.79
1:A:14:HIS:O	3:A:519:HOH:O	2.00	0.79
1:B:15:ALA:O	3:B:512:HOH:O	2.01	0.79
1:C:136:PHE:CZ	3:C:714:HOH:O	2.36	0.79
1:C:89:HIS:CG	3:C:504:HOH:O	2.35	0.78
1:C:269:PHE:CD2	3:C:697:HOH:O	2.35	0.78
1:A:56:ALA:HB2	2:A:401:FMN:HM73	1.63	0.78
1:A:184:ARG:NH2	1:A:226:SER:O	2.16	0.78
1:C:105:MET:CE	3:C:536:HOH:O	2.31	0.77
1:C:274:GLN:OE1	3:C:517:HOH:O	2.01	0.77
1:C:104:ARG:HA	3:C:511:HOH:O	1.71	0.77
1:B:145:ALA:O	3:B:513:HOH:O	2.02	0.76
2:A:401:FMN:C6	3:A:513:HOH:O	2.15	0.76
1:C:232:TRP:CE2	3:C:516:HOH:O	2.37	0.76
1:A:287:ARG:NH2	3:A:539:HOH:O	2.18	0.76
1:A:160:ASN:CG	3:A:514:HOH:O	2.24	0.75
1:C:156:ASN:CB	3:C:634:HOH:O	2.26	0.75
1:C:332:ILE:O	3:C:521:HOH:O	2.05	0.75
1:A:92:GLY:C	3:A:530:HOH:O	2.24	0.75
1:C:232:TRP:CZ2	3:C:516:HOH:O	2.40	0.74
1:C:77:GLN:CG	3:C:524:HOH:O	2.27	0.74
1:C:252:ASP:O	3:C:522:HOH:O	2.06	0.74
1:C:345:GLN:N	3:C:534:HOH:O	2.20	0.74
1:C:19:ILE:HB	3:C:508:HOH:O	1.88	0.74
1:C:105:MET:HE2	3:C:536:HOH:O	1.86	0.74
1:C:116:VAL:O	3:C:511:HOH:O	2.06	0.74
1:A:27:GLY:O	1:A:345:GLN:NE2	2.12	0.74
1:A:187:THR:C	3:A:516:HOH:O	2.25	0.74
1:C:120:ALA:HB1	3:C:531:HOH:O	1.87	0.74
1:B:219:ASP:O	3:B:514:HOH:O	2.06	0.73
1:A:243:PHE:CZ	3:A:522:HOH:O	2.10	0.73
1:C:264:GLY:HA2	3:C:546:HOH:O	1.86	0.73
1:A:92:GLY:CA	3:A:530:HOH:O	2.32	0.73
1:A:201:ARG:NH1	1:A:236:ASP:OD2	2.21	0.73
1:C:12:PRO:O	3:C:523:HOH:O	2.06	0.72
1:A:156:ASN:O	3:A:514:HOH:O	2.06	0.72
1:A:223:VAL:HB	3:A:664:HOH:O	1.87	0.72
1:C:34:VAL:HA	3:C:524:HOH:O	1.84	0.72

Continued on next page...

Continued from previous page...

Atom-1	Atom-2	Interatomic distance (Å)	Clash overlap (Å)
1:A:343:PHE:O	3:A:528:HOH:O	2.07	0.72
1:A:79:GLU:O	3:A:527:HOH:O	2.07	0.72
1:C:310:ASP:CG	3:C:526:HOH:O	2.28	0.71
1:C:310:ASP:OD2	3:C:526:HOH:O	2.08	0.71
1:A:187:THR:CA	3:A:542:HOH:O	2.38	0.71
1:B:266:ASN:N	1:C:266:ASN:O	2.25	0.70
1:A:156:ASN:ND2	3:A:543:HOH:O	2.24	0.70
1:B:270:MET:SD	3:B:531:HOH:O	2.49	0.70
1:C:344:SER:C	3:C:534:HOH:O	2.29	0.69
1:A:257:TRP:CH2	3:A:515:HOH:O	2.44	0.69
1:B:46:ARG:CG	3:B:558:HOH:O	2.36	0.69
1:A:184:ARG:HG2	3:A:522:HOH:O	1.92	0.69
1:C:309:ALA:O	3:C:527:HOH:O	2.10	0.69
1:A:187:THR:C	3:A:542:HOH:O	2.29	0.69
1:C:120:ALA:C	3:C:531:HOH:O	2.30	0.69
1:C:291:LEU:HD13	3:C:555:HOH:O	1.92	0.69
1:A:37:PRO:O	3:A:529:HOH:O	2.11	0.68
1:C:79:GLU:HA	3:C:510:HOH:O	1.92	0.68
1:A:189:HIS:NE2	3:A:542:HOH:O	2.24	0.68
1:B:8:ILE:HG22	3:B:512:HOH:O	1.94	0.68
1:A:184:ARG:CG	3:A:522:HOH:O	2.42	0.68
1:A:220:ARG:CZ	3:A:523:HOH:O	2.38	0.68
1:C:16:LYS:CG	3:C:509:HOH:O	2.15	0.68
1:C:201:ARG:HH12	1:C:242:VAL:HG21	1.59	0.68
1:C:94:LYS:NZ	3:C:540:HOH:O	2.27	0.68
1:C:138:GLN:HG3	3:C:531:HOH:O	1.87	0.67
1:A:220:ARG:NE	3:A:523:HOH:O	2.26	0.67
1:C:17:ASN:CG	3:C:509:HOH:O	2.25	0.67
1:B:46:ARG:CD	3:B:558:HOH:O	2.39	0.67
1:B:230:ASP:CA	3:B:504:HOH:O	2.18	0.66
1:C:19:ILE:HD12	3:C:508:HOH:O	1.94	0.66
1:A:62:GLU:OE1	3:A:531:HOH:O	2.13	0.66
1:B:224:ARG:CZ	3:B:508:HOH:O	2.36	0.66
1:C:104:ARG:CB	3:C:511:HOH:O	2.35	0.66
1:A:92:GLY:O	3:A:530:HOH:O	2.12	0.66
1:B:4:LEU:HG	3:B:516:HOH:O	1.95	0.65
1:C:219:ASP:OD2	3:C:528:HOH:O	2.11	0.65
1:C:273:ASP:OD2	3:C:530:HOH:O	2.13	0.65
1:C:230:ASP:OD2	3:C:529:HOH:O	2.13	0.65
1:A:270:MET:HB3	3:A:511:HOH:O	1.95	0.65
1:A:87:GLY:HA3	3:A:660:HOH:O	1.96	0.65

Continued on next page...

Continued from previous page...

Atom-1	Atom-2	Interatomic distance (Å)	Clash overlap (Å)
1:B:4:LEU:CG	3:B:516:HOH:O	2.44	0.65
1:C:142:ILE:HD11	1:C:182:PHE:HZ	1.60	0.64
1:C:239:PRO:HB2	1:C:277:LEU:HD11	1.79	0.64
1:C:139:ALA:O	3:C:531:HOH:O	2.14	0.64
1:B:151:LEU:HB3	1:B:211:ARG:HG3	1.79	0.64
1:C:38:ILE:CG1	3:C:507:HOH:O	2.23	0.64
1:C:231:VAL:HG22	3:C:698:HOH:O	1.97	0.64
1:B:300:ALA:C	3:B:516:HOH:O	2.33	0.64
1:C:156:ASN:CB	3:C:631:HOH:O	2.19	0.64
1:C:56:ALA:HB1	1:C:100:TRP:CD2	2.34	0.63
1:A:56:ALA:HB1	1:A:100:TRP:CD2	2.33	0.63
1:A:203:ARG:HB2	3:A:508:HOH:O	1.97	0.63
1:A:188:ASN:HA	3:A:516:HOH:O	1.88	0.63
1:A:282:ARG:HD3	1:A:289:LEU:HD22	1.80	0.63
1:A:52:ILE:CD1	3:A:546:HOH:O	2.37	0.63
1:A:233:GLY:O	3:A:535:HOH:O	2.16	0.63
1:A:244:VAL:CG2	3:A:520:HOH:O	2.08	0.62
1:A:178:LEU:HD12	3:A:536:HOH:O	2.00	0.62
1:C:91:LYS:O	3:C:532:HOH:O	2.16	0.62
1:C:120:ALA:CA	3:C:531:HOH:O	2.48	0.61
1:C:282:ARG:NH2	1:C:285:PHE:O	2.31	0.61
1:A:37:PRO:C	3:A:529:HOH:O	2.34	0.61
1:B:292:ASN:HB2	1:B:313:ALA:HB3	1.83	0.61
1:C:159:ARG:HD3	3:C:595:HOH:O	2.00	0.61
1:A:72:ILE:HD13	1:A:81:TRP:CD1	2.35	0.61
1:A:181:GLU:OE1	3:A:536:HOH:O	2.16	0.61
1:C:199:GLU:N	3:C:513:HOH:O	2.32	0.61
1:A:184:ARG:NH1	1:A:229:GLY:O	2.33	0.61
1:B:8:ILE:N	3:B:512:HOH:O	2.33	0.61
1:B:61:ARG:NH2	1:B:64:LEU:O	2.34	0.61
1:B:129:THR:HG21	1:B:134:LYS:HD2	1.82	0.61
1:B:65:GLY:HA3	1:B:106:VAL:HG22	1.83	0.60
1:A:25:LEU:HA	1:A:55:GLU:HB2	1.83	0.60
1:A:220:ARG:NH1	3:A:554:HOH:O	2.35	0.60
1:A:170:GLN:CA	3:A:515:HOH:O	2.45	0.59
1:A:205:LEU:CD1	3:A:505:HOH:O	2.47	0.59
1:A:224:ARG:HH11	2:A:401:FMN:HM81	1.67	0.59
1:C:12:PRO:HG3	3:C:528:HOH:O	2.02	0.59
1:A:142:ILE:O	3:A:537:HOH:O	2.17	0.59
1:A:15:ALA:HA	3:A:519:HOH:O	1.88	0.59
1:C:89:HIS:CE1	3:C:504:HOH:O	2.49	0.59

Continued on next page...

Continued from previous page...

Atom-1	Atom-2	Interatomic distance (Å)	Clash overlap (Å)
1:B:240:GLU:HB2	3:B:518:HOH:O	2.02	0.59
1:B:268:ASP:C	3:B:519:HOH:O	2.40	0.59
1:B:269:PHE:C	3:B:519:HOH:O	2.40	0.59
1:A:14:HIS:C	3:A:519:HOH:O	2.40	0.58
1:C:85:VAL:C	3:C:504:HOH:O	2.36	0.58
1:A:224:ARG:NH1	2:A:401:FMN:HM81	2.18	0.58
1:C:104:ARG:HB3	3:C:511:HOH:O	1.99	0.58
1:B:17:ASN:ND2	3:B:522:HOH:O	2.35	0.58
1:C:33:ALA:O	3:C:524:HOH:O	2.14	0.58
1:A:222:GLY:CA	3:A:525:HOH:O	2.52	0.57
1:C:345:GLN:C	3:C:534:HOH:O	2.43	0.57
1:A:134:LYS:HG3	3:A:557:HOH:O	2.03	0.57
1:A:258:LEU:HD11	3:A:667:HOH:O	1.88	0.57
1:C:156:ASN:CG	3:C:634:HOH:O	2.43	0.57
1:A:227:PRO:O	3:A:538:HOH:O	2.18	0.57
1:C:138:GLN:HG2	3:C:531:HOH:O	1.95	0.57
1:C:345:GLN:O	3:C:534:HOH:O	2.17	0.57
1:B:23:PRO:HA	3:B:535:HOH:O	2.04	0.56
1:A:295:TYR:O	1:A:317:LYS:NZ	2.28	0.56
1:B:230:ASP:CB	3:B:504:HOH:O	2.48	0.56
1:B:184:ARG:NH2	1:B:226:SER:O	2.39	0.56
1:C:184:ARG:HH11	1:C:236:ASP:H	1.53	0.56
1:B:330:ARG:NH2	3:B:515:HOH:O	2.08	0.56
1:C:25:LEU:HA	1:C:55:GLU:HB2	1.88	0.56
1:C:16:LYS:NZ	1:C:16:LYS:H	2.04	0.56
1:B:4:LEU:HD11	3:B:516:HOH:O	2.06	0.56
1:A:159:ARG:NH1	1:C:92:GLY:HA2	2.21	0.55
1:C:34:VAL:CG2	3:C:524:HOH:O	2.53	0.55
1:A:188:ASN:HB2	3:A:516:HOH:O	2.06	0.55
1:C:142:ILE:HB	1:C:146:ASP:CB	2.36	0.55
1:B:56:ALA:HB1	1:B:100:TRP:CD2	2.42	0.55
1:B:131:GLU:OE1	1:B:134:LYS:NZ	2.40	0.55
1:B:304:LEU:HD23	3:B:509:HOH:O	2.06	0.55
1:B:326:GLU:HG3	1:B:330:ARG:HD3	1.88	0.55
1:C:35:PRO:HD2	1:C:80:ALA:HB3	1.87	0.55
1:A:262:GLU:C	1:A:293:GLN:HG3	2.28	0.54
1:A:257:TRP:CZ2	3:A:515:HOH:O	2.60	0.54
1:A:54:THR:HG23	1:A:96:VAL:O	2.07	0.53
1:A:62:GLU:HB3	3:A:531:HOH:O	2.07	0.53
1:B:12:PRO:HD3	1:B:219:ASP:HB2	1.90	0.53
1:C:250:LEU:O	1:C:255:VAL:HG13	2.09	0.53

Continued on next page...

Continued from previous page...

Atom-1	Atom-2	Interatomic distance (Å)	Clash overlap (Å)
1:A:222:GLY:N	3:A:525:HOH:O	2.41	0.53
1:A:221:THR:CG2	3:A:525:HOH:O	2.38	0.53
1:B:149:ARG:HB2	3:B:513:HOH:O	2.07	0.52
1:B:16:LYS:HE2	1:B:50:GLY:HA2	1.91	0.52
1:B:115:PRO:O	1:B:140:ARG:N	2.40	0.52
1:C:343:PHE:CE1	2:C:401:FMN:HM72	2.44	0.52
1:B:24:LEU:HD13	1:B:319:ILE:HG13	1.91	0.52
1:C:14:HIS:NE2	3:C:512:HOH:O	1.94	0.52
1:A:78:VAL:HB	3:A:547:HOH:O	2.09	0.52
1:A:65:GLY:HA3	1:A:106:VAL:HG22	1.90	0.52
1:C:65:GLY:HA3	1:C:106:VAL:HG22	1.92	0.52
1:A:193:GLU:CD	3:A:502:HOH:O	2.37	0.52
1:B:150:ILE:HG21	1:B:204:PHE:HZ	1.75	0.52
1:C:2:PRO:O	3:C:535:HOH:O	2.19	0.52
1:C:54:THR:HG22	1:C:95:ILE:HD11	1.92	0.52
1:C:330:ARG:NE	1:C:332:ILE:HD11	2.25	0.51
1:A:54:THR:HG22	1:A:95:ILE:HD11	1.92	0.51
1:A:224:ARG:NH1	2:A:401:FMN:H9	2.26	0.51
1:B:264:GLY:O	1:C:268:ASP:HB2	2.10	0.51
1:B:140:ARG:HG2	3:B:507:HOH:O	2.10	0.51
1:A:56:ALA:HB2	2:A:401:FMN:C7M	2.36	0.51
1:B:16:LYS:NZ	1:B:16:LYS:H	2.09	0.51
1:A:200:ASN:C	3:A:508:HOH:O	2.18	0.51
1:B:4:LEU:CD1	3:B:516:HOH:O	2.59	0.51
1:B:282:ARG:NH2	1:B:310:ASP:OD2	2.44	0.50
1:C:54:THR:HG23	1:C:96:VAL:O	2.11	0.50
1:A:96:VAL:CB	3:A:504:HOH:O	2.15	0.50
1:A:250:LEU:CD1	3:A:664:HOH:O	2.31	0.50
1:A:267:GLY:H	1:A:271:LYS:HD3	1.76	0.50
1:B:270:MET:N	3:B:531:HOH:O	2.44	0.50
1:C:244:VAL:HG22	3:C:525:HOH:O	2.10	0.50
1:A:326:GLU:OE2	1:A:330:ARG:NH1	2.45	0.50
1:A:230:ASP:HA	1:A:235:ILE:HG23	1.93	0.50
1:B:104:ARG:NH2	1:B:232:TRP:O	2.44	0.49
3:B:537:HOH:O	1:C:339:MET:SD	2.60	0.49
1:C:198:PRO:CB	3:C:513:HOH:O	2.22	0.49
1:B:46:ARG:HG2	1:B:322:PRO:HA	1.95	0.49
1:B:227:PRO:HB2	1:B:277:LEU:HD12	1.94	0.49
1:C:56:ALA:HB1	1:C:100:TRP:CG	2.48	0.49
1:B:292:ASN:OD1	2:B:401:FMN:H4'	2.12	0.49
1:A:121:THR:OG1	3:A:507:HOH:O	1.85	0.49

Continued on next page...

Continued from previous page...

Atom-1	Atom-2	Interatomic distance (Å)	Clash overlap (Å)
1:A:220:ARG:CZ	3:A:554:HOH:O	2.60	0.49
1:C:176:GLY:O	3:C:536:HOH:O	2.20	0.48
1:A:172:HIS:CE1	2:A:401:FMN:HM83	2.48	0.48
1:C:106:VAL:HG12	1:C:115:PRO:HG3	1.95	0.48
1:A:98:GLN:NE2	2:A:401:FMN:HM82	2.14	0.48
1:A:169:VAL:HA	3:A:504:HOH:O	1.98	0.48
1:B:357:THR:O	1:B:357:THR:OG1	2.29	0.48
1:A:79:GLU:HB3	3:A:527:HOH:O	2.12	0.48
1:A:250:LEU:HD11	3:A:667:HOH:O	2.04	0.48
1:A:227:PRO:HG2	3:A:551:HOH:O	2.14	0.48
1:C:269:PHE:HB2	1:C:316:ARG:HH12	1.78	0.48
1:B:56:ALA:HB1	1:B:100:TRP:CG	2.49	0.47
1:A:187:THR:HA	3:A:542:HOH:O	2.11	0.47
1:B:31:LYS:HE2	1:B:130:TYR:CD1	2.48	0.47
1:B:266:ASN:CA	3:B:517:HOH:O	2.36	0.47
1:A:268:ASP:HB3	1:A:316:ARG:HH12	1.80	0.47
1:B:35:PRO:HD2	1:B:80:ALA:HB3	1.96	0.47
1:C:79:GLU:HG2	3:C:510:HOH:O	2.03	0.47
1:A:96:VAL:CG1	3:A:504:HOH:O	2.59	0.47
1:C:230:ASP:CG	3:C:529:HOH:O	2.51	0.47
1:A:46:ARG:HG2	1:A:322:PRO:HA	1.97	0.46
1:B:26:ARG:NH2	1:B:319:ILE:HG23	2.29	0.46
1:A:184:ARG:CD	3:A:522:HOH:O	2.48	0.46
1:B:288:PRO:HA	1:B:310:ASP:OD2	2.15	0.46
1:C:98:GLN:N	3:C:558:HOH:O	2.49	0.46
1:A:100:TRP:CE2	1:A:102:MET:HG2	2.51	0.46
1:B:213:ILE:HG23	1:B:218:ALA:HB2	1.98	0.46
1:A:83:PRO:CD	3:A:586:HOH:O	2.64	0.46
1:C:287:ARG:HB3	1:C:288:PRO:HD2	1.97	0.46
1:A:181:GLU:HB2	3:A:536:HOH:O	2.17	0.45
1:A:268:ASP:OD1	1:A:269:PHE:N	2.50	0.45
1:C:281:ILE:HA	1:C:284:VAL:HG22	1.98	0.45
1:A:83:PRO:CG	3:A:586:HOH:O	2.65	0.45
1:B:7:PRO:HA	3:B:512:HOH:O	2.16	0.45
1:B:23:PRO:HG3	3:B:508:HOH:O	2.16	0.45
1:C:294:ASP:CG	3:C:503:HOH:O	2.27	0.45
1:C:294:ASP:OD1	1:C:316:ARG:NH2	2.49	0.45
1:B:100:TRP:CE2	1:B:102:MET:HG2	2.51	0.45
1:A:155:GLU:CB	3:A:517:HOH:O	2.49	0.45
1:A:246:ALA:O	1:A:250:LEU:HG	2.17	0.45
1:B:58:GLY:HA3	1:B:64:LEU:HB2	1.99	0.45

Continued on next page...

Continued from previous page...

Atom-1	Atom-2	Interatomic distance (Å)	Clash overlap (Å)
1:A:188:ASN:CB	3:A:516:HOH:O	2.52	0.45
1:A:221:THR:C	3:A:525:HOH:O	2.55	0.45
1:C:317:LYS:HG3	3:C:615:HOH:O	2.15	0.44
1:C:117:SER:O	1:C:142:ILE:HD12	2.17	0.44
1:A:28:ARG:NH2	1:A:350:TYR:HB2	2.32	0.44
1:C:14:HIS:CE1	3:C:565:HOH:O	2.70	0.44
1:B:320:SER:HA	1:B:353:TYR:CG	2.52	0.44
1:C:120:ALA:CB	3:C:531:HOH:O	2.52	0.44
1:A:104:ARG:HB3	1:A:117:SER:HB2	2.00	0.44
1:B:213:ILE:HD11	1:B:255:VAL:HG12	1.98	0.44
1:C:317:LYS:HE2	3:C:670:HOH:O	2.18	0.44
1:A:26:ARG:HH12	1:A:342:TRP:HA	1.81	0.43
1:C:231:VAL:HG23	3:C:576:HOH:O	2.18	0.43
1:A:316:ARG:N	2:A:401:FMN:O1P	2.40	0.43
1:C:12:PRO:CG	3:C:528:HOH:O	2.64	0.43
1:C:287:ARG:HA	3:C:514:HOH:O	2.17	0.43
1:A:345:GLN:NE2	3:A:528:HOH:O	2.46	0.43
1:B:270:MET:CG	3:B:531:HOH:O	2.66	0.43
1:A:116:VAL:HB	1:A:142:ILE:CG2	2.49	0.43
1:B:4:LEU:O	1:B:17:ASN:HB2	2.19	0.43
1:B:54:THR:HG23	1:B:96:VAL:O	2.18	0.43
1:C:16:LYS:H	1:C:16:LYS:HZ3	1.67	0.43
1:A:56:ALA:HB1	1:A:100:TRP:CG	2.53	0.43
1:C:31:LYS:HG2	1:C:130:TYR:CZ	2.54	0.43
1:C:34:VAL:HG22	3:C:524:HOH:O	2.17	0.43
1:C:127:VAL:HB	1:C:136:PHE:CE1	2.54	0.43
1:B:201:ARG:NH1	1:B:236:ASP:OD1	2.52	0.43
1:C:103:GLY:C	3:C:511:HOH:O	2.46	0.42
1:A:26:ARG:NH1	1:A:342:TRP:HA	2.34	0.42
1:A:83:PRO:HG2	3:A:613:HOH:O	2.18	0.42
1:C:116:VAL:HB	1:C:142:ILE:CG2	2.49	0.42
1:B:203:ARG:O	1:B:206:LYS:HB3	2.18	0.42
1:B:250:LEU:HB3	1:B:255:VAL:HG21	2.01	0.42
1:B:188:ASN:ND2	1:B:201:ARG:HG2	2.34	0.42
1:C:350:TYR:CD2	1:C:351:THR:HG23	2.55	0.42
1:C:286:LEU:C	3:C:514:HOH:O	2.52	0.42
1:A:51:LEU:HD11	1:A:96:VAL:HG13	2.02	0.42
1:A:230:ASP:OD1	1:A:235:ILE:HG12	2.20	0.42
2:A:401:FMN:H9	2:A:401:FMN:H1'1	1.77	0.42
1:B:25:LEU:HD21	1:B:66:TRP:CG	2.55	0.42
1:B:31:LYS:HG3	1:B:68:PHE:CE1	2.55	0.42

Continued on next page...

Continued from previous page...

Atom-1	Atom-2	Interatomic distance (Å)	Clash overlap (Å)
1:B:66:TRP:HB3	1:B:69:ALA:HB2	2.02	0.42
1:B:219:ASP:HA	1:B:256:ALA:HB2	2.02	0.42
1:C:142:ILE:HB	1:C:146:ASP:HB2	2.02	0.42
1:C:214:ALA:HA	3:C:679:HOH:O	2.19	0.42
1:B:230:ASP:HB3	1:B:235:ILE:HG12	2.02	0.41
1:C:244:VAL:HB	1:C:245:PRO:HD3	2.02	0.41
1:A:199:GLU:CD	1:A:199:GLU:H	2.24	0.41
1:C:344:SER:CB	3:C:534:HOH:O	2.67	0.41
1:A:24:LEU:HA	2:A:401:FMN:N5	2.36	0.41
1:A:78:VAL:HG21	1:A:163:ARG:NH1	2.35	0.41
1:A:83:PRO:HD2	3:A:586:HOH:O	2.20	0.41
1:A:244:VAL:HB	1:A:245:PRO:HD3	2.03	0.41
1:A:184:ARG:HD2	1:A:234:CYS:SG	2.60	0.41
1:C:292:ASN:HB2	1:C:313:ALA:HB3	2.03	0.41
1:B:266:ASN:OD1	1:C:263:PRO:HA	2.21	0.41
1:C:16:LYS:C	3:C:509:HOH:O	2.50	0.41
1:C:24:LEU:HA	2:C:401:FMN:C5A	2.51	0.41
1:B:3:THR:O	1:B:18:ARG:HD2	2.20	0.41
1:B:274:GLN:H	1:B:274:GLN:HG2	1.66	0.41
1:A:117:SER:HA	3:A:536:HOH:O	2.21	0.41
1:A:343:PHE:HB3	3:A:584:HOH:O	2.21	0.41
1:C:184:ARG:HH11	1:C:236:ASP:N	2.18	0.41
1:A:64:LEU:HD11	1:A:69:ALA:HB3	2.02	0.41
1:A:160:ASN:HA	1:A:163:ARG:HD3	2.03	0.41
1:B:350:TYR:CD2	1:B:351:THR:HG23	2.56	0.41
1:C:142:ILE:HD11	1:C:182:PHE:CZ	2.47	0.41
1:C:274:GLN:H	1:C:274:GLN:HG2	1.42	0.41
1:A:128:HIS:NE2	3:A:526:HOH:O	2.06	0.40
1:C:28:ARG:NH2	1:C:350:TYR:HB2	2.36	0.40
1:A:189:HIS:CD2	3:A:542:HOH:O	2.73	0.40
1:C:198:PRO:O	1:C:202:ILE:HG23	2.21	0.40
1:C:276:LYS:NZ	3:C:556:HOH:O	2.47	0.40
1:A:278:SER:OG	1:A:279:PRO:HD3	2.22	0.40
1:C:150:ILE:HD11	3:C:520:HOH:O	2.22	0.40
1:A:142:ILE:HB	1:A:146:ASP:CB	2.52	0.40
1:C:100:TRP:CE2	1:C:102:MET:HG2	2.57	0.40

All (1) symmetry-related close contacts are listed below. The label for Atom-2 includes the symmetry operator and encoded unit-cell translations to be applied.

Atom-1	Atom-2	Interatomic distance (Å)	Clash overlap (Å)
3:C:659:HOH:O	3:C:707:HOH:O[1_565]	2.11	0.09

5.3 Torsion angles [i](#)

5.3.1 Protein backbone [i](#)

In the following table, the Percentiles column shows the percent Ramachandran outliers of the chain as a percentile score with respect to all X-ray entries followed by that with respect to entries of similar resolution.

The Analysed column shows the number of residues for which the backbone conformation was analysed, and the total number of residues.

Mol	Chain	Analysed	Favoured	Allowed	Outliers	Percentiles	
1	A	360/362 (99%)	340 (94%)	17 (5%)	3 (1%)	19	5
1	B	360/362 (99%)	341 (95%)	18 (5%)	1 (0%)	41	18
1	C	360/362 (99%)	343 (95%)	13 (4%)	4 (1%)	14	2
All	All	1080/1086 (99%)	1024 (95%)	48 (4%)	8 (1%)	22	6

All (8) Ramachandran outliers are listed below:

Mol	Chain	Res	Type
1	A	268	ASP
1	A	293	GLN
1	B	293	GLN
1	C	293	GLN
1	C	265	PRO
1	C	270	MET
1	A	72	ILE
1	C	72	ILE

5.3.2 Protein sidechains [i](#)

In the following table, the Percentiles column shows the percent sidechain outliers of the chain as a percentile score with respect to all X-ray entries followed by that with respect to entries of similar resolution.

The Analysed column shows the number of residues for which the sidechain conformation was analysed, and the total number of residues.

Mol	Chain	Analysed	Rotameric	Outliers	Percentiles	
1	A	286/286 (100%)	278 (97%)	8 (3%)	43	14
1	B	286/286 (100%)	276 (96%)	10 (4%)	36	9
1	C	286/286 (100%)	276 (96%)	10 (4%)	36	9
All	All	858/858 (100%)	830 (97%)	28 (3%)	38	10

All (28) residues with a non-rotameric sidechain are listed below:

Mol	Chain	Res	Type
1	A	16	LYS
1	A	106	VAL
1	A	172	HIS
1	A	235	ILE
1	A	261	ARG
1	A	272	THR
1	A	293	GLN
1	A	318	PHE
1	B	1	MET
1	B	16	LYS
1	B	106	VAL
1	B	150	ILE
1	B	257	TRP
1	B	269	PHE
1	B	274	GLN
1	B	293	GLN
1	B	318	PHE
1	B	357	THR
1	C	1	MET
1	C	16	LYS
1	C	106	VAL
1	C	142	ILE
1	C	172	HIS
1	C	257	TRP
1	C	269	PHE
1	C	274	GLN
1	C	293	GLN
1	C	318	PHE

Sometimes sidechains can be flipped to improve hydrogen bonding and reduce clashes. All (3) such sidechains are listed below:

Mol	Chain	Res	Type
1	A	114	GLN

Continued on next page...

Continued from previous page...

Mol	Chain	Res	Type
1	C	274	GLN
1	C	362	ASN

5.3.3 RNA [i](#)

There are no RNA molecules in this entry.

5.4 Non-standard residues in protein, DNA, RNA chains [i](#)

There are no non-standard protein/DNA/RNA residues in this entry.

5.5 Carbohydrates [i](#)

There are no monosaccharides in this entry.

5.6 Ligand geometry [i](#)

3 ligands are modelled in this entry.

In the following table, the Counts columns list the number of bonds (or angles) for which Mogul statistics could be retrieved, the number of bonds (or angles) that are observed in the model and the number of bonds (or angles) that are defined in the Chemical Component Dictionary. The Link column lists molecule types, if any, to which the group is linked. The Z score for a bond length (or angle) is the number of standard deviations the observed value is removed from the expected value. A bond length (or angle) with $|Z| > 2$ is considered an outlier worth inspection. RMSZ is the root-mean-square of all Z scores of the bond lengths (or angles).

Mol	Type	Chain	Res	Link	Bond lengths			Bond angles		
					Counts	RMSZ	# Z > 2	Counts	RMSZ	# Z > 2
2	FMN	C	401	-	33,33,33	1.06	2 (6%)	48,50,50	1.25	7 (14%)
2	FMN	A	401	-	33,33,33	1.18	2 (6%)	48,50,50	1.55	9 (18%)
2	FMN	B	401	-	33,33,33	1.04	2 (6%)	48,50,50	1.25	7 (14%)

In the following table, the Chirals column lists the number of chiral outliers, the number of chiral centers analysed, the number of these observed in the model and the number defined in the Chemical Component Dictionary. Similar counts are reported in the Torsion and Rings columns. '-' means no outliers of that kind were identified.

Mol	Type	Chain	Res	Link	Chirals	Torsions	Rings
2	FMN	C	401	-	-	1/18/18/18	0/3/3/3

Continued on next page...

Continued from previous page...

Mol	Type	Chain	Res	Link	Chirals	Torsions	Rings
2	FMN	A	401	-	-	9/18/18/18	0/3/3/3
2	FMN	B	401	-	-	14/18/18/18	0/3/3/3

All (6) bond length outliers are listed below:

Mol	Chain	Res	Type	Atoms	Z	Observed(Å)	Ideal(Å)
2	A	401	FMN	C4A-N5	4.28	1.39	1.30
2	C	401	FMN	C4A-N5	3.83	1.38	1.30
2	B	401	FMN	C4A-N5	3.65	1.37	1.30
2	A	401	FMN	C10-N1	2.60	1.38	1.33
2	B	401	FMN	C10-N1	2.50	1.38	1.33
2	C	401	FMN	C10-N1	2.32	1.37	1.33

All (23) bond angle outliers are listed below:

Mol	Chain	Res	Type	Atoms	Z	Observed(°)	Ideal(°)
2	A	401	FMN	C9A-C5A-N5	-3.82	118.28	122.43
2	A	401	FMN	C5A-C9A-N10	3.55	121.62	117.95
2	B	401	FMN	C4-N3-C2	-3.23	119.67	125.64
2	A	401	FMN	C4-N3-C2	-3.00	120.09	125.64
2	C	401	FMN	C4-N3-C2	-2.99	120.12	125.64
2	C	401	FMN	C4A-C10-N10	2.96	120.81	116.48
2	A	401	FMN	C4A-C4-N3	2.90	120.55	113.19
2	A	401	FMN	C7M-C7-C6	2.79	124.65	119.49
2	A	401	FMN	C9-C9A-N10	-2.75	118.12	121.84
2	B	401	FMN	C4A-C10-N10	2.68	120.40	116.48
2	B	401	FMN	C4A-C4-N3	2.64	119.91	113.19
2	A	401	FMN	O4-C4-C4A	-2.61	119.67	126.60
2	C	401	FMN	C10-C4A-N5	-2.61	119.33	124.86
2	B	401	FMN	O4-C4-C4A	-2.61	119.69	126.60
2	C	401	FMN	C4A-C4-N3	2.53	119.61	113.19
2	B	401	FMN	C4A-C10-N1	-2.41	119.15	124.73
2	A	401	FMN	C7M-C7-C8	-2.39	115.83	120.74
2	B	401	FMN	C10-C4A-N5	-2.25	120.08	124.86
2	C	401	FMN	C9A-C5A-N5	-2.21	120.03	122.43
2	B	401	FMN	C4-C4A-C10	2.21	120.50	116.79
2	C	401	FMN	O4-C4-C4A	-2.15	120.91	126.60
2	C	401	FMN	C4-C4A-N5	2.07	121.18	118.23
2	A	401	FMN	C4A-C10-N10	2.03	119.44	116.48

There are no chirality outliers.

All (24) torsion outliers are listed below:

Mol	Chain	Res	Type	Atoms
2	A	401	FMN	C3'-C4'-C5'-O5'
2	A	401	FMN	O4'-C4'-C5'-O5'
2	A	401	FMN	C5'-O5'-P-O1P
2	A	401	FMN	C5'-O5'-P-O2P
2	B	401	FMN	C1'-C2'-C3'-O3'
2	B	401	FMN	C1'-C2'-C3'-C4'
2	B	401	FMN	C2'-C3'-C4'-O4'
2	B	401	FMN	C2'-C3'-C4'-C5'
2	B	401	FMN	O3'-C3'-C4'-O4'
2	B	401	FMN	O3'-C3'-C4'-C5'
2	B	401	FMN	C5'-O5'-P-O2P
2	B	401	FMN	C5'-O5'-P-O3P
2	B	401	FMN	O2'-C2'-C3'-O3'
2	B	401	FMN	O2'-C2'-C3'-C4'
2	B	401	FMN	C3'-C4'-C5'-O5'
2	B	401	FMN	C5'-O5'-P-O1P
2	A	401	FMN	C2'-C3'-C4'-O4'
2	A	401	FMN	C2'-C3'-C4'-C5'
2	C	401	FMN	C4'-C5'-O5'-P
2	B	401	FMN	N10-C1'-C2'-O2'
2	A	401	FMN	C4'-C5'-O5'-P
2	A	401	FMN	C5'-O5'-P-O3P
2	B	401	FMN	O4'-C4'-C5'-O5'
2	A	401	FMN	O3'-C3'-C4'-C5'

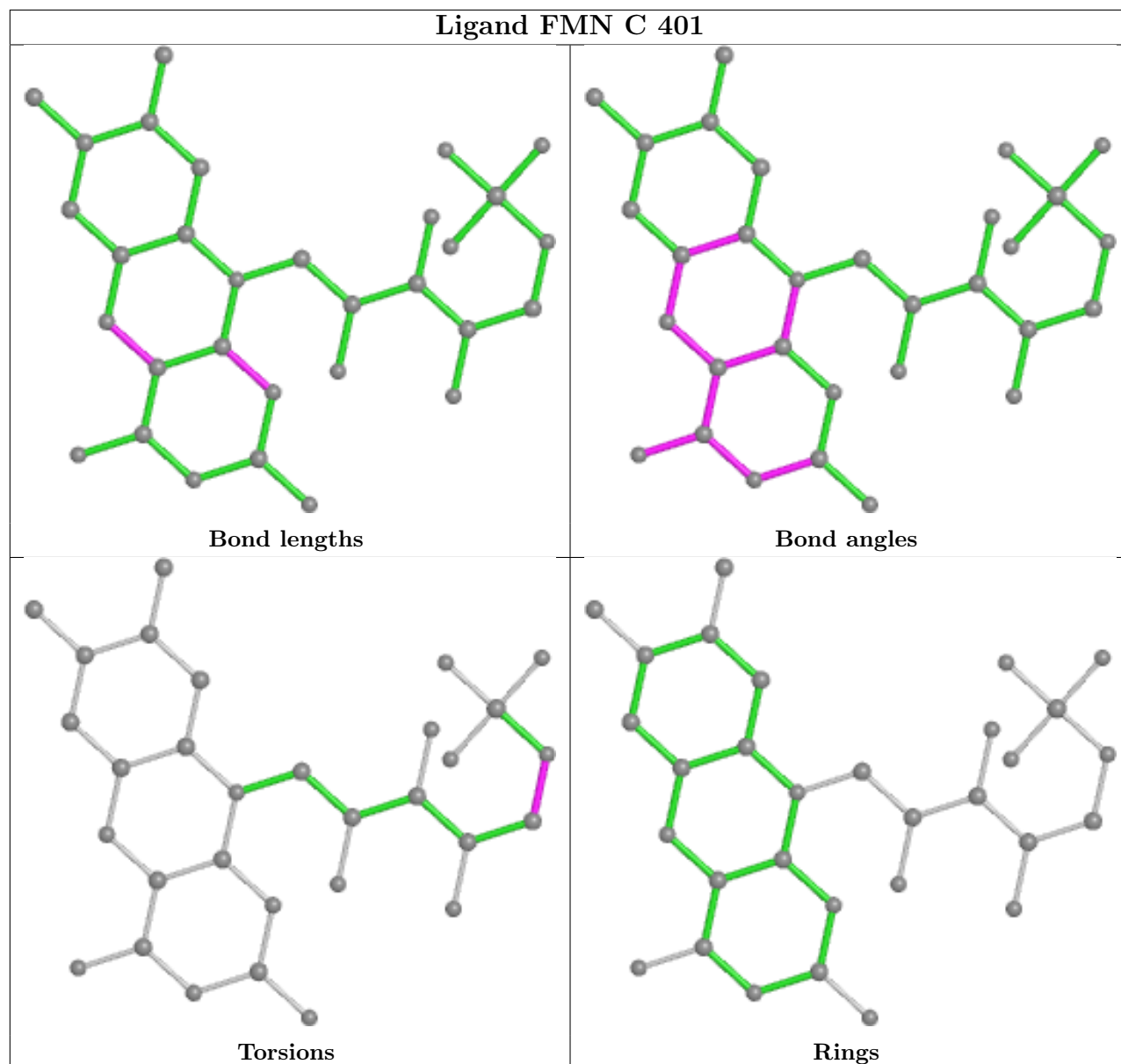
There are no ring outliers.

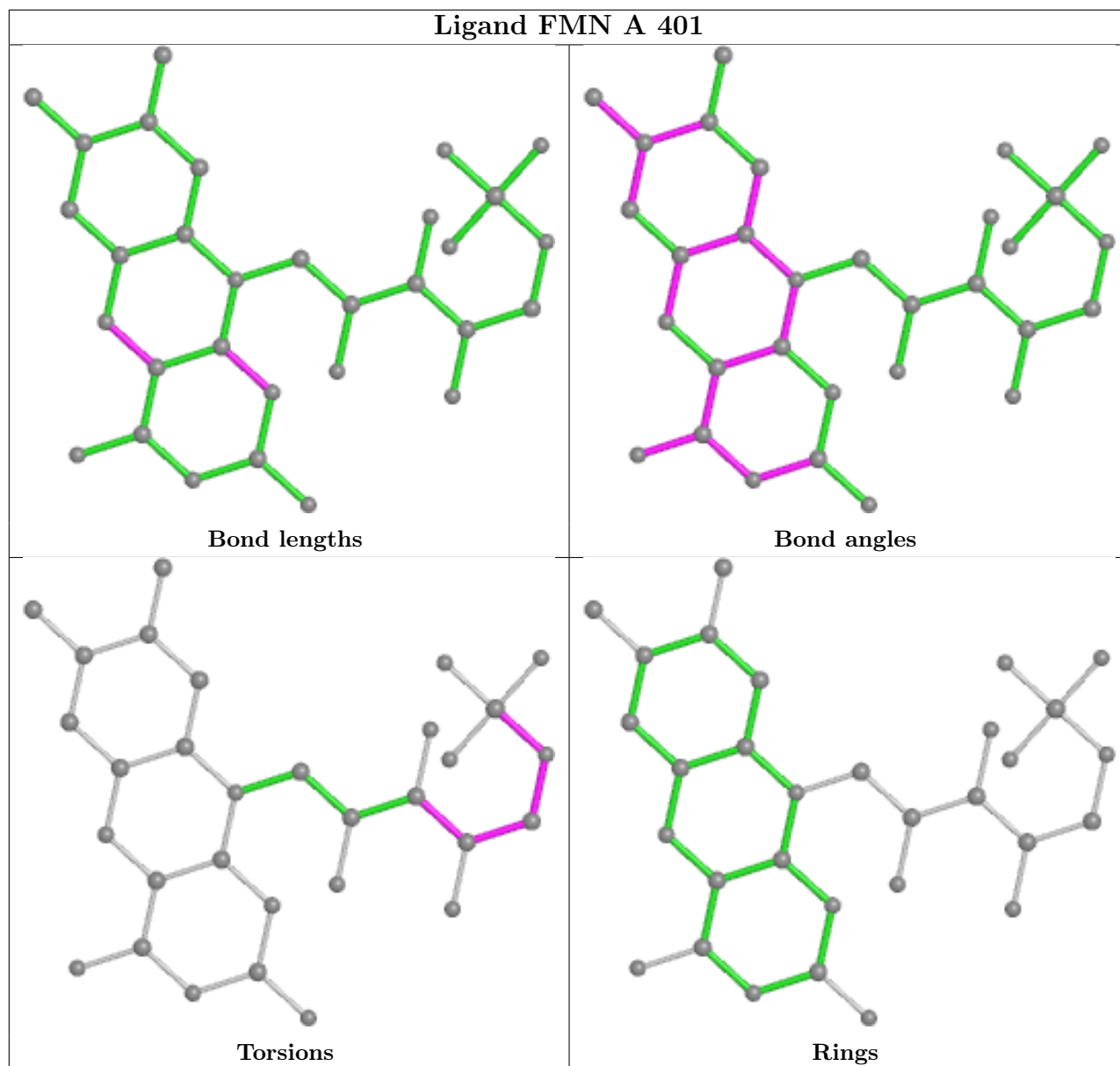
3 monomers are involved in 18 short contacts:

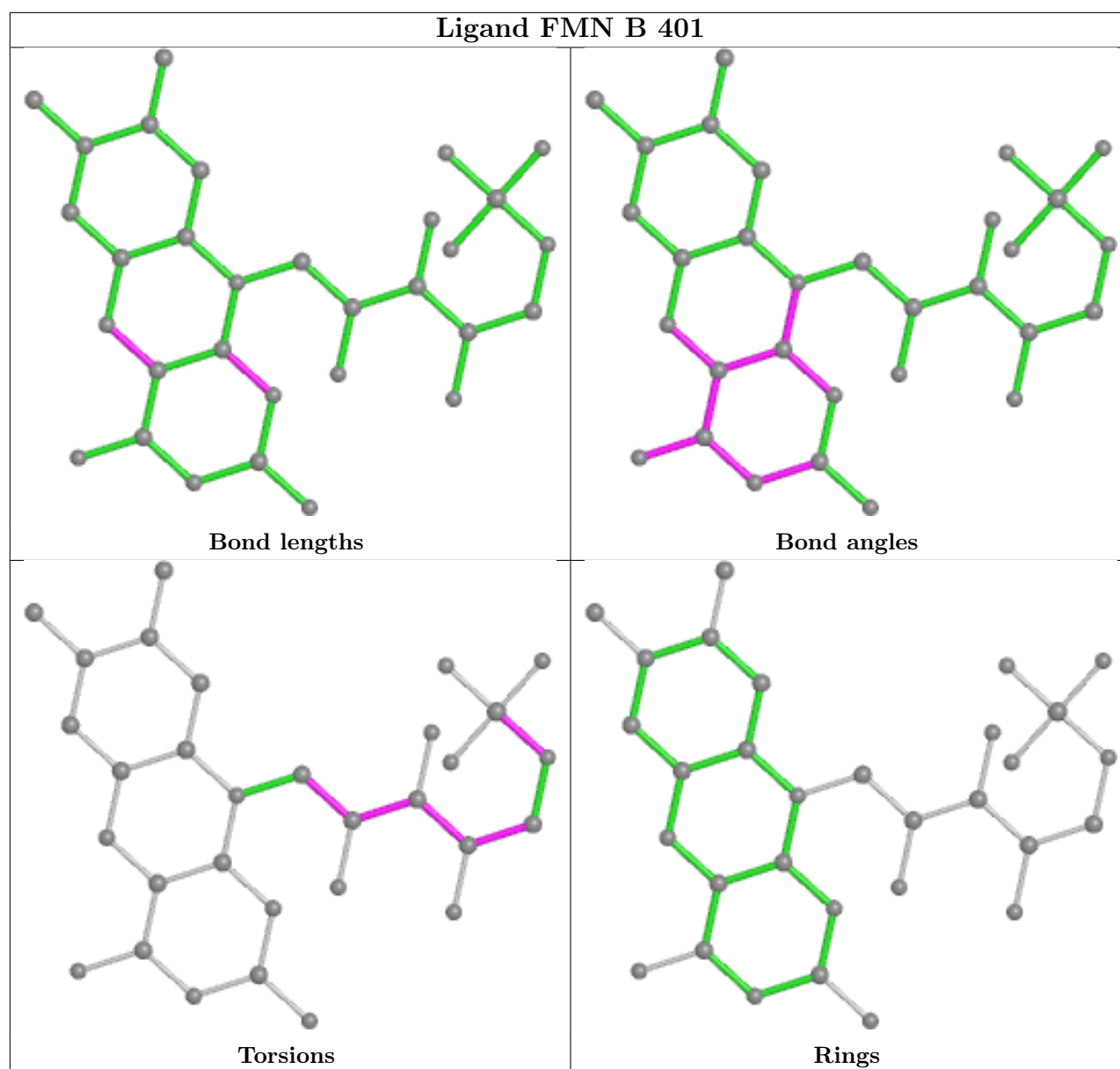
Mol	Chain	Res	Type	Clashes	Symm-Clashes
2	C	401	FMN	2	0
2	A	401	FMN	15	0
2	B	401	FMN	1	0

The following is a two-dimensional graphical depiction of Mogul quality analysis of bond lengths, bond angles, torsion angles, and ring geometry for all instances of the Ligand of Interest. In addition, ligands with molecular weight > 250 and outliers as shown on the validation Tables will also be included. For torsion angles, if less than 5% of the Mogul distribution of torsion angles is within 10 degrees of the torsion angle in question, then that torsion angle is considered an outlier. Any bond that is central to one or more torsion angles identified as an outlier by Mogul will be highlighted in the graph. For rings, the root-mean-square deviation (RMSD) between the ring in question and similar rings identified by Mogul is calculated over all ring torsion angles. If the average RMSD is greater than 60 degrees and the minimal RMSD between the ring in question and

any Mogul-identified rings is also greater than 60 degrees, then that ring is considered an outlier. The outliers are highlighted in purple. The color gray indicates Mogul did not find sufficient equivalents in the CSD to analyse the geometry.







5.7 Other polymers [i](#)

There are no such residues in this entry.

5.8 Polymer linkage issues [i](#)

There are no chain breaks in this entry.

6 Fit of model and data

6.1 Protein, DNA and RNA chains

In the following table, the column labelled ‘#RSRZ > 2’ contains the number (and percentage) of RSRZ outliers, followed by percent RSRZ outliers for the chain as percentile scores relative to all X-ray entries and entries of similar resolution. The OWAB column contains the minimum, median, 95th percentile and maximum values of the occupancy-weighted average B-factor per residue. The column labelled ‘Q < 0.9’ lists the number of (and percentage) of residues with an average occupancy less than 0.9.

Mol	Chain	Analysed	<RSRZ>	#RSRZ>2	OWAB(Å ²)	Q<0.9
1	A	359/362 (99%)	0.51	17 (4%) 31 34	7, 12, 22, 64	2 (0%)
1	B	360/362 (99%)	1.11	51 (14%) 2 2	13, 24, 35, 84	0
1	C	360/362 (99%)	0.34	11 (3%) 49 54	6, 8, 17, 44	0
All	All	1079/1086 (99%)	0.65	79 (7%) 15 16	6, 13, 31, 84	2 (0%)

All (79) RSRZ outliers are listed below:

Mol	Chain	Res	Type	RSRZ
1	A	268	ASP	14.0
1	B	270	MET	10.0
1	B	269	PHE	7.5
1	B	232	TRP	6.6
1	B	38	ILE	6.5
1	B	264	GLY	6.5
1	B	360	PRO	6.3
1	B	272	THR	6.2
1	A	269	PHE	5.9
1	A	356	ALA	5.8
1	A	358	SER	5.5
1	A	362	ASN	5.5
1	C	269	PHE	5.3
1	C	264	GLY	5.1
1	B	255	VAL	4.7
1	C	266	ASN	4.5
1	B	147	ILE	4.5
1	B	235	ILE	4.5
1	B	112	GLY	4.2
1	B	268	ASP	4.0
1	A	232	TRP	3.9
1	A	272	THR	3.8
1	B	162	ILE	3.8

Continued on next page...

Continued from previous page...

Mol	Chain	Res	Type	RSRZ
1	A	266	ASN	3.7
1	A	229	GLY	3.6
1	B	230	ASP	3.6
1	A	336	PRO	3.3
1	C	270	MET	3.3
1	B	73	TRP	3.2
1	B	216	ILE	3.1
1	B	343	PHE	3.0
1	A	328	PHE	3.0
1	C	271	LYS	3.0
1	B	136	PHE	3.0
1	B	106	VAL	2.9
1	B	151	LEU	2.9
1	B	204	PHE	2.9
1	B	229	GLY	2.9
1	B	266	ASN	2.9
1	B	86	ALA	2.9
1	B	114	GLN	2.8
1	B	59	ILE	2.8
1	B	362	ASN	2.7
1	B	263	PRO	2.6
1	B	34	VAL	2.6
1	C	272	THR	2.6
1	B	359	GLY	2.5
1	B	213	ILE	2.5
1	A	357	THR	2.5
1	B	144	ALA	2.4
1	B	231	VAL	2.4
1	A	297	PHE	2.4
1	B	85	VAL	2.4
1	B	208	VAL	2.4
1	B	113	THR	2.3
1	C	361	ASN	2.3
1	B	214	ALA	2.3
1	C	268	ASP	2.3
1	B	8	ILE	2.3
1	B	212	VAL	2.3
1	B	271	LYS	2.2
1	B	65	GLY	2.2
1	C	360	PRO	2.2
1	A	270	MET	2.2
1	B	81	TRP	2.2

Continued on next page...

Continued from previous page...

Mol	Chain	Res	Type	RSRZ
1	C	359	GLY	2.2
1	B	205	LEU	2.1
1	A	231	VAL	2.1
1	C	357	THR	2.1
1	B	124	PRO	2.1
1	B	233	GLY	2.1
1	B	121	THR	2.1
1	B	47	ALA	2.1
1	B	120	ALA	2.1
1	B	14	HIS	2.0
1	B	159	ARG	2.0
1	A	304	LEU	2.0
1	B	250	LEU	2.0
1	A	235	ILE	2.0

6.2 Non-standard residues in protein, DNA, RNA chains [i](#)

There are no non-standard protein/DNA/RNA residues in this entry.

6.3 Carbohydrates [i](#)

There are no monosaccharides in this entry.

6.4 Ligands [i](#)

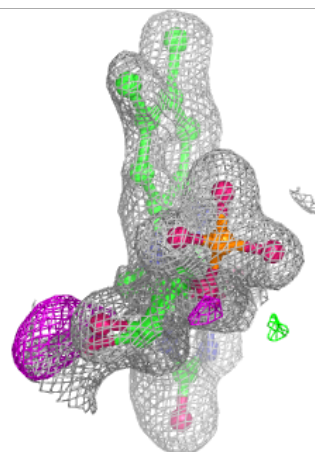
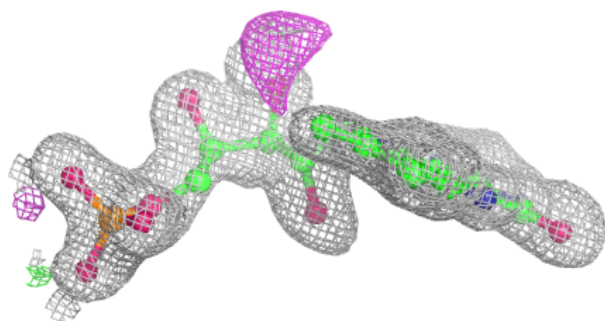
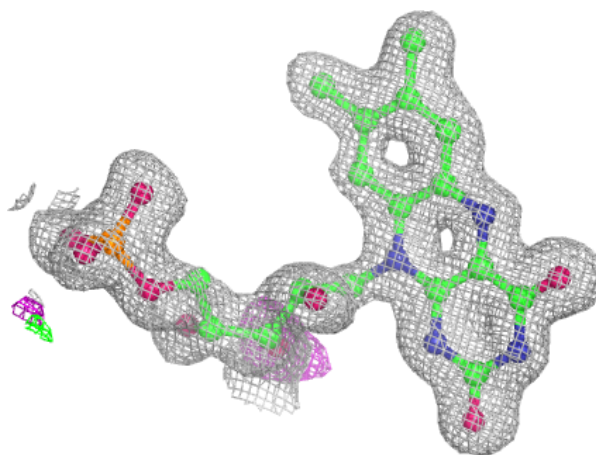
In the following table, the Atoms column lists the number of modelled atoms in the group and the number defined in the chemical component dictionary. The B-factors column lists the minimum, median, 95th percentile and maximum values of B factors of atoms in the group. The column labelled 'Q< 0.9' lists the number of atoms with occupancy less than 0.9.

Mol	Type	Chain	Res	Atoms	RSCC	RSR	B-factors(Å ²)	Q<0.9
2	FMN	B	401	31/31	0.89	0.14	17,19,20,21	0
2	FMN	A	401	31/31	0.94	0.10	9,12,15,17	0
2	FMN	C	401	31/31	0.96	0.11	6,8,11,14	0

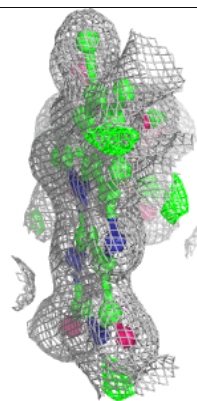
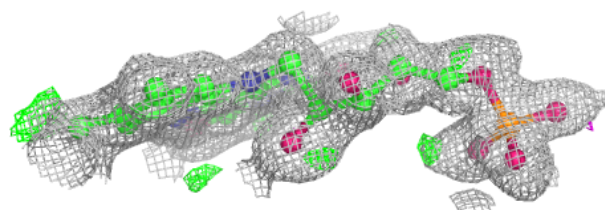
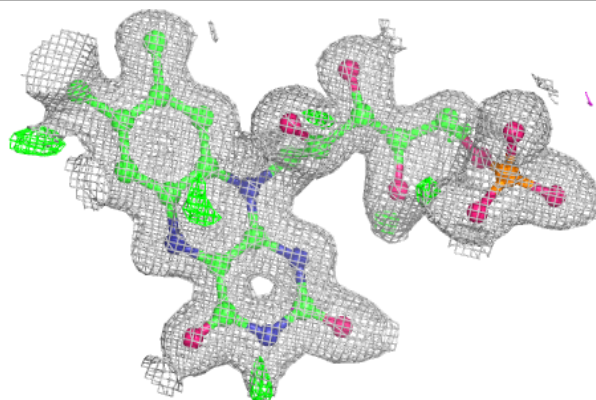
The following is a graphical depiction of the model fit to experimental electron density of all instances of the Ligand of Interest. In addition, ligands with molecular weight > 250 and outliers as shown on the geometry validation Tables will also be included. Each fit is shown from different orientation to approximate a three-dimensional view.

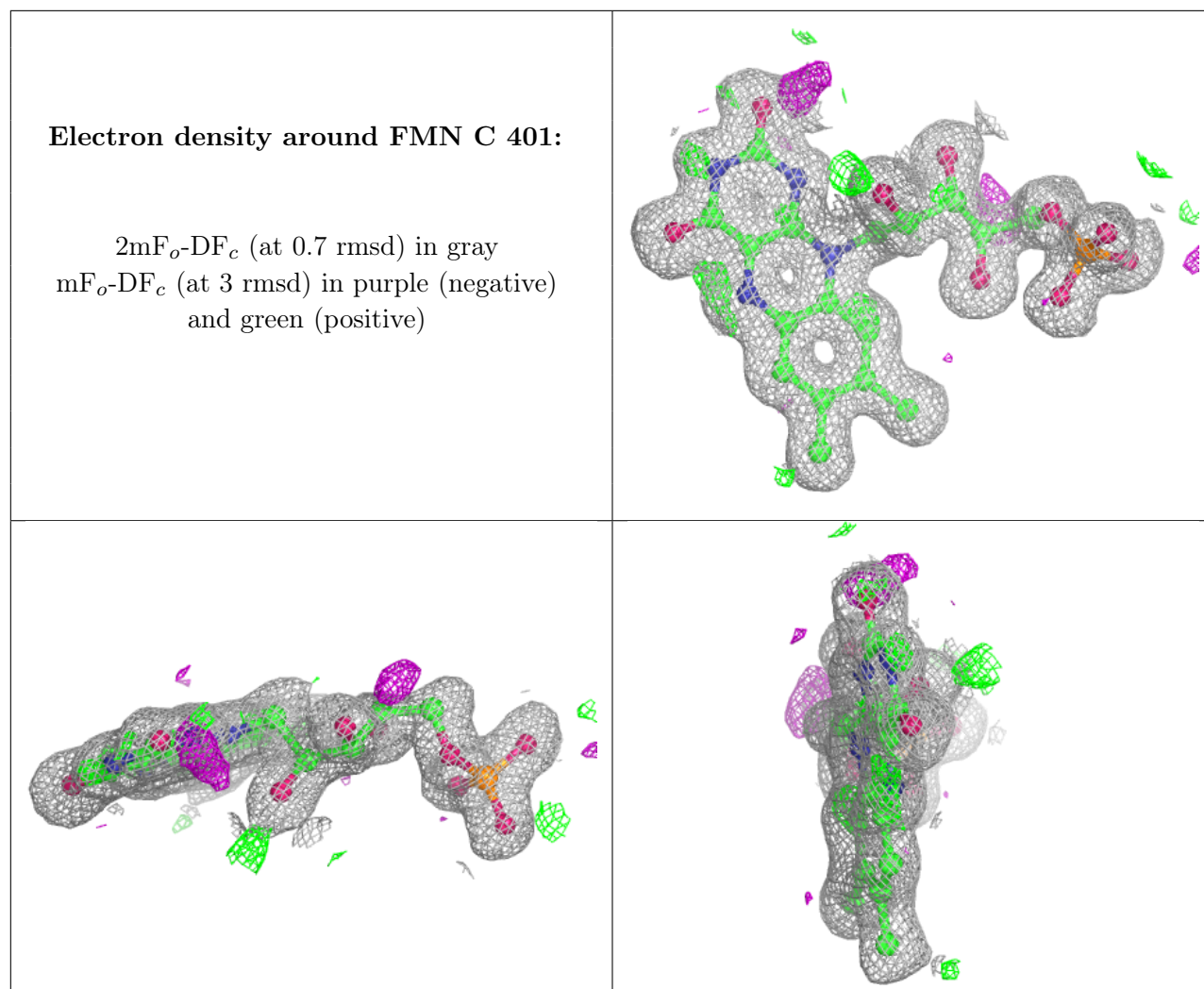
Electron density around FMN B 401:

$2mF_o-DF_c$ (at 0.7 rmsd) in gray
 mF_o-DF_c (at 3 rmsd) in purple (negative)
and green (positive)

**Electron density around FMN A 401:**

$2mF_o-DF_c$ (at 0.7 rmsd) in gray
 mF_o-DF_c (at 3 rmsd) in purple (negative)
and green (positive)





6.5 Other polymers ⓘ

There are no such residues in this entry.