



Full wwPDB X-ray Structure Validation Report ⓘ

Jun 22, 2024 – 01:56 PM EDT

PDB ID : 6G07
Title : RORGT (264-518;C455S) IN COMPLEX WITH INVERSE AGONIST "CPD-9" AND RIP140 PEPTIDE AT 1.66Å
Authors : Kallen, J.
Deposited on : 2018-03-16
Resolution : 1.66 Å(reported)

This is a Full wwPDB X-ray Structure Validation Report for a publicly released PDB entry.

We welcome your comments at validation@mail.wwpdb.org

A user guide is available at

<https://www.wwpdb.org/validation/2017/XrayValidationReportHelp>

with specific help available everywhere you see the ⓘ symbol.

The types of validation reports are described at

<http://www.wwpdb.org/validation/2017/FAQs#types>.

The following versions of software and data (see [references ⓘ](#)) were used in the production of this report:

MolProbity : 4.02b-467
Mogul : 2022.3.0, CSD as543be (2022)
Xtrriage (Phenix) : 1.20.1
EDS : 2.37.1
buster-report : 1.1.7 (2018)
Percentile statistics : 20191225.v01 (using entries in the PDB archive December 25th 2019)
Refmac : 5.8.0158
CCP4 : 7.0.044 (Gargrove)
Ideal geometry (proteins) : Engh & Huber (2001)
Ideal geometry (DNA, RNA) : Parkinson et al. (1996)
Validation Pipeline (wwPDB-VP) : 2.37.1

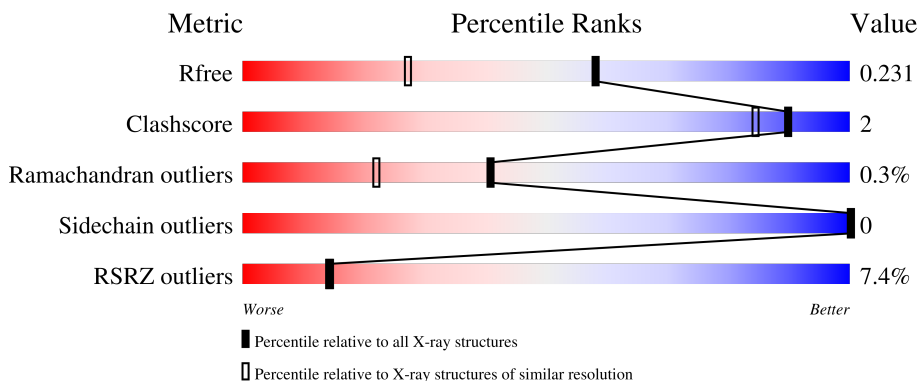
1 Overall quality at a glance

The following experimental techniques were used to determine the structure:

X-RAY DIFFRACTION

The reported resolution of this entry is 1.66 Å.

Percentile scores (ranging between 0-100) for global validation metrics of the entry are shown in the following graphic. The table shows the number of entries on which the scores are based.



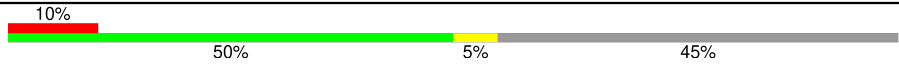
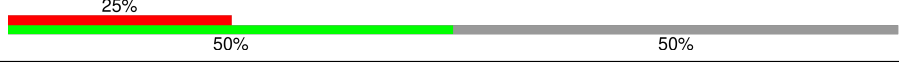

Metric	Whole archive (#Entries)	Similar resolution (#Entries, resolution range(Å))
R_{free}	130704	1827 (1.66-1.66)
Clashscore	141614	1931 (1.66-1.66)
Ramachandran outliers	138981	1891 (1.66-1.66)
Sidechain outliers	138945	1891 (1.66-1.66)
RSRZ outliers	127900	1791 (1.66-1.66)

The table below summarises the geometric issues observed across the polymeric chains and their fit to the electron density. The red, orange, yellow and green segments of the lower bar indicate the fraction of residues that contain outliers for ≥ 3 , 2, 1 and 0 types of geometric quality criteria respectively. A grey segment represents the fraction of residues that are not modelled. The numeric value for each fraction is indicated below the corresponding segment, with a dot representing fractions $\leq 5\%$. The upper red bar (where present) indicates the fraction of residues that have poor fit to the electron density. The numeric value is given above the bar.

Mol	Chain	Length	Quality of chain
1	A	257	
1	B	257	
1	C	257	
1	D	257	
2	P	20	

Continued on next page...

Continued from previous page...

Mol	Chain	Length	Quality of chain
2	Q	20	 <p>10% 50% 5% 45%</p>
2	R	20	 <p>25% 50% 50%</p>
2	S	20	 <p>20% 50% 50%</p>

2 Entry composition

There are 4 unique types of molecules in this entry. The entry contains 9371 atoms, of which 0 are hydrogens and 0 are deuteriums.

In the tables below, the ZeroOcc column contains the number of atoms modelled with zero occupancy, the AltConf column contains the number of residues with at least one atom in alternate conformation and the Trace column contains the number of residues modelled with at most 2 atoms.

- Molecule 1 is a protein called Nuclear receptor ROR-gamma.

Mol	Chain	Residues	Atoms					ZeroOcc	AltConf	Trace
			Total	C	N	O	S			
1	A	245	Total 2046	C 1307	N 362	O 363	S 14	0	9	0
1	B	245	Total 2032	C 1301	N 359	O 358	S 14	0	6	0
1	C	246	Total 2039	C 1302	N 360	O 364	S 13	0	6	0
1	D	245	Total 2020	C 1293	N 357	O 356	S 14	0	3	0

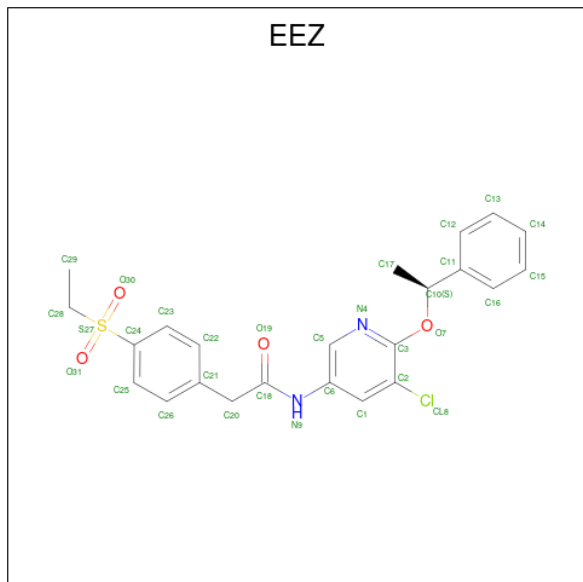
There are 8 discrepancies between the modelled and reference sequences:

Chain	Residue	Modelled	Actual	Comment	Reference
A	262	GLY	-	expression tag	UNP P51449
A	455	SER	CYS	engineered mutation	UNP P51449
B	262	GLY	-	expression tag	UNP P51449
B	455	SER	CYS	engineered mutation	UNP P51449
C	262	GLY	-	expression tag	UNP P51449
C	455	SER	CYS	engineered mutation	UNP P51449
D	262	GLY	-	expression tag	UNP P51449
D	455	SER	CYS	engineered mutation	UNP P51449

- Molecule 2 is a protein called Nuclear receptor-interacting protein 1.

Mol	Chain	Residues	Atoms				ZeroOcc	AltConf	Trace
			Total	C	N	O			
2	P	9	Total 70	C 47	N 12	O 11	0	0	0
2	Q	11	Total 86	C 58	N 15	O 13	0	0	0
2	R	10	Total 77	C 52	N 13	O 12	0	0	0
2	S	10	Total 77	C 52	N 13	O 12	0	0	0

- Molecule 3 is {N}-[5-chloranyl-6-[(1 {S})-1-phenylethoxy]pyridin-3-yl]-2-(4-ethylsulfonylphenyl)ethanamide (three-letter code: EEZ) (formula: C₂₃H₂₃ClN₂O₄S).



Mol	Chain	Residues	Atoms					ZeroOcc	AltConf	
			Total	C	Cl	N	O			S
3	A	1	31	23	1	2	4	1	0	0
3	B	1	31	23	1	2	4	1	0	0
3	C	1	31	23	1	2	4	1	0	0
3	D	1	31	23	1	2	4	1	0	0

- Molecule 4 is water.

Mol	Chain	Residues	Atoms		ZeroOcc	AltConf
4	A	210	Total	O	0	0
			210	210		
4	P	6	Total	O	0	0
			6	6		
4	B	184	Total	O	0	0
			184	184		
4	Q	7	Total	O	0	0
			7	7		
4	C	188	Total	O	0	0
			188	188		
4	D	204	Total	O	0	0
			204	204		

Continued on next page...

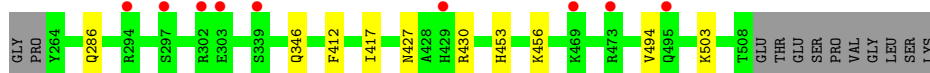
Continued from previous page...

Mol	Chain	Residues	Atoms		ZeroOcc	AltConf
4	S	1	Total	O	0	0
			1	1		

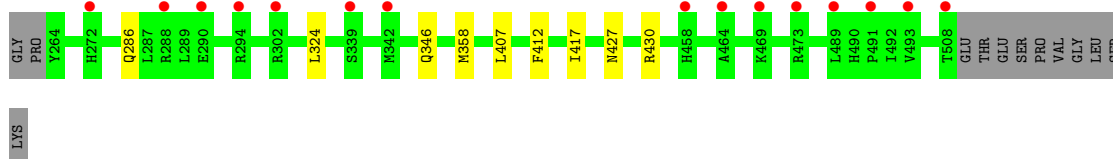
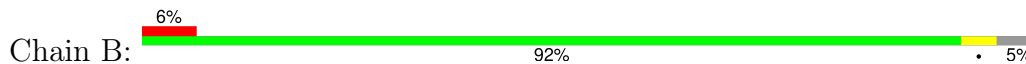
3 Residue-property plots [i](#)

These plots are drawn for all protein, RNA, DNA and oligosaccharide chains in the entry. The first graphic for a chain summarises the proportions of the various outlier classes displayed in the second graphic. The second graphic shows the sequence view annotated by issues in geometry and electron density. Residues are color-coded according to the number of geometric quality criteria for which they contain at least one outlier: green = 0, yellow = 1, orange = 2 and red = 3 or more. A red dot above a residue indicates a poor fit to the electron density ($RSRZ > 2$). Stretches of 2 or more consecutive residues without any outlier are shown as a green connector. Residues present in the sample, but not in the model, are shown in grey.

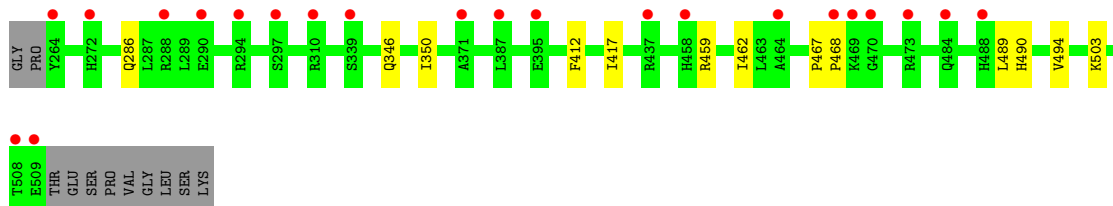
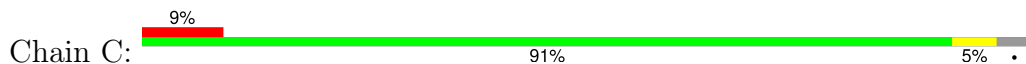
- Molecule 1: Nuclear receptor ROR-gamma



- Molecule 1: Nuclear receptor ROR-gamma



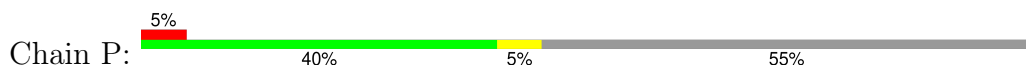
- Molecule 1: Nuclear receptor ROR-gamma



- Molecule 1: Nuclear receptor ROR-gamma



- Molecule 2: Nuclear receptor-interacting protein 1



4 Data and refinement statistics

Property	Value	Source
Space group	P 1 21 1	Depositor
Cell constants a, b, c, α , β , γ	85.94Å 68.06Å 96.52Å 90.00° 110.83° 90.00°	Depositor
Resolution (Å)	19.38 – 1.66 19.37 – 1.66	Depositor EDS
% Data completeness (in resolution range)	99.6 (19.38-1.66) 99.6 (19.37-1.66)	Depositor EDS
R_{merge}	0.04	Depositor
R_{sym}	(Not available)	Depositor
$\langle I/\sigma(I) \rangle$ ¹	3.12 (at 1.66Å)	Xtrriage
Refinement program	REFMAC	Depositor
R, R_{free}	0.214 , 0.233 0.211 , 0.231	Depositor DCC
R_{free} test set	6117 reflections (5.00%)	wwPDB-VP
Wilson B-factor (Å ²)	21.7	Xtrriage
Anisotropy	0.083	Xtrriage
Bulk solvent k_{sol} (e/Å ³), B_{sol} (Å ²)	0.38 , 44.5	EDS
L-test for twinning ²	$\langle L \rangle = 0.47$, $\langle L^2 \rangle = 0.30$	Xtrriage
Estimated twinning fraction	No twinning to report.	Xtrriage
F_o, F_c correlation	0.95	EDS
Total number of atoms	9371	wwPDB-VP
Average B, all atoms (Å ²)	24.0	wwPDB-VP

Xtrriage's analysis on translational NCS is as follows: *The analyses of the Patterson function reveals a significant off-origin peak that is 67.41 % of the origin peak, indicating pseudo-translational symmetry. The chance of finding a peak of this or larger height randomly in a structure without pseudo-translational symmetry is equal to 5.1699e-06. The detected translational NCS is most likely also responsible for the elevated intensity ratio.*

¹Intensities estimated from amplitudes.

²Theoretical values of $\langle |L| \rangle$, $\langle L^2 \rangle$ for acentric reflections are 0.5, 0.333 respectively for untwinned datasets, and 0.375, 0.2 for perfectly twinned datasets.

5 Model quality [i](#)

5.1 Standard geometry [i](#)

Bond lengths and bond angles in the following residue types are not validated in this section: EEZ

The Z score for a bond length (or angle) is the number of standard deviations the observed value is removed from the expected value. A bond length (or angle) with $|Z| > 5$ is considered an outlier worth inspection. RMSZ is the root-mean-square of all Z scores of the bond lengths (or angles).

Mol	Chain	Bond lengths		Bond angles	
		RMSZ	# Z >5	RMSZ	# Z >5
1	A	0.32	0/2118	0.44	0/2853
1	B	0.34	0/2095	0.44	0/2823
1	C	0.32	0/2101	0.43	0/2831
1	D	0.32	0/2073	0.44	0/2793
2	P	0.34	0/70	0.43	0/94
2	Q	0.34	0/86	0.44	0/115
2	R	0.31	0/77	0.43	0/104
2	S	0.34	0/77	0.43	0/104
All	All	0.33	0/8697	0.44	0/11717

There are no bond length outliers.

There are no bond angle outliers.

There are no chirality outliers.

There are no planarity outliers.

5.2 Too-close contacts [i](#)

In the following table, the Non-H and H(model) columns list the number of non-hydrogen atoms and hydrogen atoms in the chain respectively. The H(added) column lists the number of hydrogen atoms added and optimized by MolProbity. The Clashes column lists the number of clashes within the asymmetric unit, whereas Symm-Clashes lists symmetry-related clashes.

Mol	Chain	Non-H	H(model)	H(added)	Clashes	Symm-Clashes
1	A	2046	0	2064	5	0
1	B	2032	0	2052	15	0
1	C	2039	0	2052	6	0
1	D	2020	0	2037	4	0
2	P	70	0	79	1	0

Continued on next page...

Continued from previous page...

Mol	Chain	Non-H	H(model)	H(added)	Clashes	Symm-Clashes
2	Q	86	0	101	1	0
2	R	77	0	88	0	0
2	S	77	0	88	0	0
3	A	31	0	0	0	0
3	B	31	0	0	0	0
3	C	31	0	0	0	0
3	D	31	0	0	1	0
4	A	210	0	0	0	0
4	B	184	0	0	0	0
4	C	188	0	0	0	0
4	D	204	0	0	0	0
4	P	6	0	0	0	0
4	Q	7	0	0	0	0
4	S	1	0	0	0	0
All	All	9371	0	8561	30	0

The all-atom clashscore is defined as the number of clashes found per 1000 atoms (including hydrogen atoms). The all-atom clashscore for this structure is 2.

All (30) close contacts within the same asymmetric unit are listed below, sorted by their clash magnitude.

Atom-1	Atom-2	Interatomic distance (Å)	Clash overlap (Å)
1:B:324[B]:LEU:CD2	1:B:358[B]:MET:HE3	1.59	1.31
1:B:324[B]:LEU:HD21	1:B:358[B]:MET:CE	1.68	1.22
1:B:324[B]:LEU:CD2	1:B:358[B]:MET:CE	2.19	1.20
1:B:324[B]:LEU:HD21	1:B:358[B]:MET:HE3	1.00	0.99
1:B:324[B]:LEU:HD23	1:B:358[B]:MET:CE	2.06	0.86
1:B:324[B]:LEU:HD23	1:B:358[B]:MET:HE3	1.60	0.83
1:B:324[B]:LEU:CD2	1:B:358[B]:MET:HE1	2.13	0.78
1:A:494:VAL:O	1:A:503:LYS:HE3	1.92	0.69
1:B:324[B]:LEU:HD21	1:B:358[B]:MET:SD	2.42	0.60
1:D:324[A]:LEU:HD11	1:D:358:MET:SD	2.42	0.59
1:B:324[B]:LEU:HD23	1:B:358[B]:MET:HE1	1.79	0.58
1:A:453:HIS:HA	1:A:456:LYS:HE2	1.87	0.56
1:D:346:GLN:O	1:D:350[A]:ILE:HG12	2.07	0.55
1:C:494:VAL:O	1:C:503:LYS:HE3	2.08	0.54
1:A:346:GLN:NE2	2:P:507:HIS:HB2	2.26	0.50
1:C:489:LEU:HD23	1:C:490:HIS:CE1	2.49	0.48
1:D:365[A]:MET:HG2	3:D:601:EEZ:C14	2.44	0.48
1:C:346:GLN:O	1:C:350:ILE:HG12	2.14	0.47
1:D:412:PHE:HB3	1:D:417:ILE:HG13	1.98	0.46

Continued on next page...

Continued from previous page...

Atom-1	Atom-2	Interatomic distance (Å)	Clash overlap (Å)
1:B:324[B]:LEU:CG	1:B:358[B]:MET:CE	2.92	0.46
1:B:427:ASN:O	1:B:430:ARG:HG2	2.19	0.42
1:B:412:PHE:HB3	1:B:417:ILE:HG13	2.01	0.42
1:C:412:PHE:HB3	1:C:417:ILE:HG13	2.01	0.42
1:C:459:ARG:O	1:C:462:ILE:HG12	2.20	0.42
1:A:412:PHE:HB3	1:A:417:ILE:HG13	2.02	0.41
1:A:427:ASN:O	1:A:430:ARG:HG2	2.21	0.41
1:B:407:LEU:HD22	1:B:412:PHE:HE2	1.86	0.41
1:C:467:PRO:HA	1:C:468:PRO:HD3	1.91	0.41
1:B:324[B]:LEU:CG	1:B:358[B]:MET:HE1	2.51	0.41
1:B:346:GLN:HE22	2:Q:508:LYS:H	1.69	0.40

There are no symmetry-related clashes.

5.3 Torsion angles [i](#)

5.3.1 Protein backbone [i](#)

In the following table, the Percentiles column shows the percent Ramachandran outliers of the chain as a percentile score with respect to all X-ray entries followed by that with respect to entries of similar resolution.

The Analysed column shows the number of residues for which the backbone conformation was analysed, and the total number of residues.

Mol	Chain	Analysed	Favoured	Allowed	Outliers	Percentiles	
1	A	252/257 (98%)	248 (98%)	3 (1%)	1 (0%)	34	16
1	B	249/257 (97%)	245 (98%)	3 (1%)	1 (0%)	34	16
1	C	250/257 (97%)	246 (98%)	3 (1%)	1 (0%)	34	16
1	D	246/257 (96%)	241 (98%)	5 (2%)	0	100	100
2	P	7/20 (35%)	7 (100%)	0	0	100	100
2	Q	9/20 (45%)	9 (100%)	0	0	100	100
2	R	8/20 (40%)	7 (88%)	1 (12%)	0	100	100
2	S	8/20 (40%)	8 (100%)	0	0	100	100
All	All	1029/1108 (93%)	1011 (98%)	15 (2%)	3 (0%)	41	22

All (3) Ramachandran outliers are listed below:

Mol	Chain	Res	Type
1	B	286	GLN
1	A	286	GLN
1	C	286	GLN

5.3.2 Protein sidechains [i](#)

In the following table, the Percentiles column shows the percent sidechain outliers of the chain as a percentile score with respect to all X-ray entries followed by that with respect to entries of similar resolution.

The Analysed column shows the number of residues for which the sidechain conformation was analysed, and the total number of residues.

Mol	Chain	Analysed	Rotameric	Outliers	Percentiles	
1	A	228/229 (100%)	228 (100%)	0	100	100
1	B	225/229 (98%)	225 (100%)	0	100	100
1	C	226/229 (99%)	226 (100%)	0	100	100
1	D	222/229 (97%)	222 (100%)	0	100	100
2	P	8/19 (42%)	8 (100%)	0	100	100
2	Q	10/19 (53%)	10 (100%)	0	100	100
2	R	9/19 (47%)	9 (100%)	0	100	100
2	S	9/19 (47%)	9 (100%)	0	100	100
All	All	937/992 (94%)	937 (100%)	0	100	100

There are no protein residues with a non-rotameric sidechain to report.

Sometimes sidechains can be flipped to improve hydrogen bonding and reduce clashes. All (12) such sidechains are listed below:

Mol	Chain	Res	Type
1	A	451	HIS
1	B	272	HIS
1	B	309	GLN
1	B	346	GLN
1	B	429	HIS
1	B	488	HIS
1	C	329	GLN
1	C	460	GLN
2	R	502	GLN
1	D	275	GLN
2	S	502	GLN

Continued on next page...

Continued from previous page...

Mol	Chain	Res	Type
2	S	507	HIS

5.3.3 RNA [i](#)

There are no RNA molecules in this entry.

5.4 Non-standard residues in protein, DNA, RNA chains [i](#)

There are no non-standard protein/DNA/RNA residues in this entry.

5.5 Carbohydrates [i](#)

There are no monosaccharides in this entry.

5.6 Ligand geometry [i](#)

4 ligands are modelled in this entry.

In the following table, the Counts columns list the number of bonds (or angles) for which Mogul statistics could be retrieved, the number of bonds (or angles) that are observed in the model and the number of bonds (or angles) that are defined in the Chemical Component Dictionary. The Link column lists molecule types, if any, to which the group is linked. The Z score for a bond length (or angle) is the number of standard deviations the observed value is removed from the expected value. A bond length (or angle) with $|Z| > 2$ is considered an outlier worth inspection. RMSZ is the root-mean-square of all Z scores of the bond lengths (or angles).

Mol	Type	Chain	Res	Link	Bond lengths			Bond angles		
					Counts	RMSZ	# Z > 2	Counts	RMSZ	# Z > 2
3	EEZ	B	601	-	32,33,33	0.98	0	45,46,46	1.39	6 (13%)
3	EEZ	C	601	-	32,33,33	1.01	0	45,46,46	1.38	6 (13%)
3	EEZ	A	601	-	32,33,33	0.97	0	45,46,46	1.45	8 (17%)
3	EEZ	D	601	-	32,33,33	0.99	0	45,46,46	1.46	7 (15%)

In the following table, the Chirals column lists the number of chiral outliers, the number of chiral centers analysed, the number of these observed in the model and the number defined in the Chemical Component Dictionary. Similar counts are reported in the Torsion and Rings columns. '-' means no outliers of that kind were identified.

Mol	Type	Chain	Res	Link	Chirals	Torsions	Rings
3	EEZ	B	601	-	-	0/25/25/25	0/3/3/3
3	EEZ	C	601	-	-	0/25/25/25	0/3/3/3
3	EEZ	A	601	-	-	0/25/25/25	0/3/3/3
3	EEZ	D	601	-	-	0/25/25/25	0/3/3/3

There are no bond length outliers.

All (27) bond angle outliers are listed below:

Mol	Chain	Res	Type	Atoms	Z	Observed($^{\circ}$)	Ideal($^{\circ}$)
3	A	601	EEZ	C6-C5-N4	-4.67	120.20	124.07
3	D	601	EEZ	C6-C5-N4	-4.42	120.41	124.07
3	B	601	EEZ	C6-C5-N4	-4.31	120.50	124.07
3	C	601	EEZ	C6-C5-N4	-4.14	120.65	124.07
3	D	601	EEZ	C2-C3-N4	-3.60	119.55	122.69
3	B	601	EEZ	C2-C3-N4	-3.41	119.72	122.69
3	C	601	EEZ	C2-C3-N4	-3.41	119.72	122.69
3	D	601	EEZ	O7-C10-C17	3.28	111.20	105.51
3	A	601	EEZ	O7-C10-C17	3.24	111.14	105.51
3	C	601	EEZ	O7-C10-C17	2.96	110.65	105.51
3	A	601	EEZ	C21-C20-C18	-2.93	103.59	112.33
3	B	601	EEZ	O7-C10-C17	2.93	110.58	105.51
3	B	601	EEZ	C28-S27-C24	-2.89	101.22	105.09
3	B	601	EEZ	C21-C20-C18	-2.64	104.44	112.33
3	D	601	EEZ	C21-C20-C18	-2.64	104.44	112.33
3	A	601	EEZ	C2-C3-N4	-2.54	120.48	122.69
3	C	601	EEZ	C21-C20-C18	-2.46	104.98	112.33
3	D	601	EEZ	C5-N4-C3	2.42	122.34	116.51
3	B	601	EEZ	C5-N4-C3	2.37	122.22	116.51
3	A	601	EEZ	O7-C3-C2	2.28	119.48	117.95
3	C	601	EEZ	C5-N4-C3	2.27	121.99	116.51
3	C	601	EEZ	C1-C2-C3	2.20	119.70	118.28
3	D	601	EEZ	C28-S27-C24	-2.13	102.24	105.09
3	A	601	EEZ	C5-N4-C3	2.11	121.61	116.51
3	D	601	EEZ	C1-C2-C3	2.10	119.63	118.28
3	A	601	EEZ	O30-S27-C24	-2.10	106.33	108.33
3	A	601	EEZ	C1-C6-C5	2.06	119.58	118.13

There are no chirality outliers.

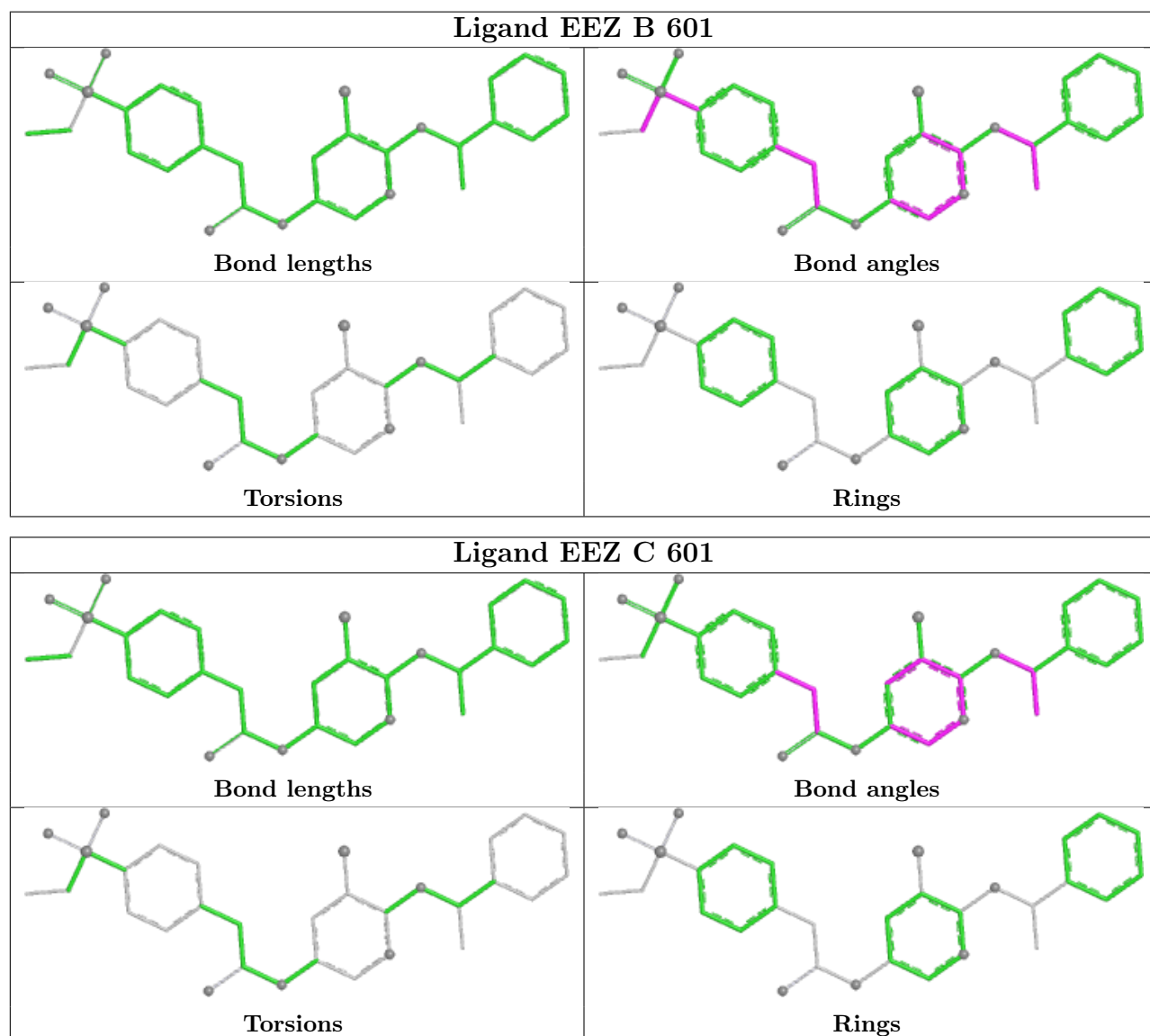
There are no torsion outliers.

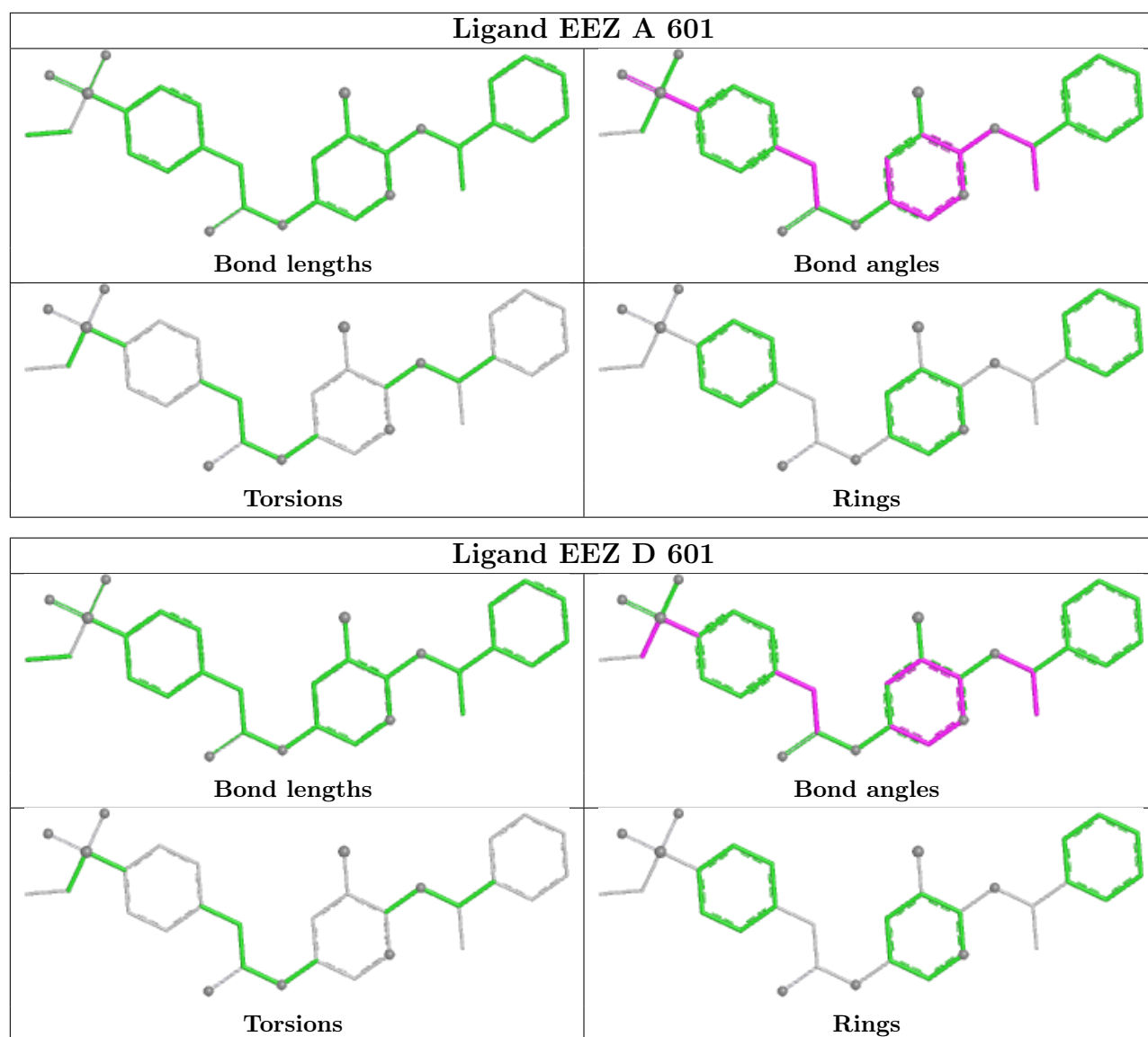
There are no ring outliers.

1 monomer is involved in 1 short contact:

Mol	Chain	Res	Type	Clashes	Symm-Clashes
3	D	601	EEZ	1	0

The following is a two-dimensional graphical depiction of Mogul quality analysis of bond lengths, bond angles, torsion angles, and ring geometry for all instances of the Ligand of Interest. In addition, ligands with molecular weight > 250 and outliers as shown on the validation Tables will also be included. For torsion angles, if less than 5% of the Mogul distribution of torsion angles is within 10 degrees of the torsion angle in question, then that torsion angle is considered an outlier. Any bond that is central to one or more torsion angles identified as an outlier by Mogul will be highlighted in the graph. For rings, the root-mean-square deviation (RMSD) between the ring in question and similar rings identified by Mogul is calculated over all ring torsion angles. If the average RMSD is greater than 60 degrees and the minimal RMSD between the ring in question and any Mogul-identified rings is also greater than 60 degrees, then that ring is considered an outlier. The outliers are highlighted in purple. The color gray indicates Mogul did not find sufficient equivalents in the CSD to analyse the geometry.





5.7 Other polymers [\(i\)](#)

There are no such residues in this entry.

5.8 Polymer linkage issues [\(i\)](#)

There are no chain breaks in this entry.

6 Fit of model and data [i](#)

6.1 Protein, DNA and RNA chains [i](#)

In the following table, the column labelled ‘#RSRZ > 2’ contains the number (and percentage) of RSRZ outliers, followed by percent RSRZ outliers for the chain as percentile scores relative to all X-ray entries and entries of similar resolution. The OWAB column contains the minimum, median, 95th percentile and maximum values of the occupancy-weighted average B-factor per residue. The column labelled ‘Q < 0.9’ lists the number of (and percentage) of residues with an average occupancy less than 0.9.

Mol	Chain	Analysed	<RSRZ>	#RSRZ>2	OWAB(Å ²)	Q<0.9
1	A	245/257 (95%)	0.25	9 (3%) 41 41	14, 20, 28, 36	0
1	B	245/257 (95%)	0.50	15 (6%) 21 19	15, 22, 33, 35	0
1	C	246/257 (95%)	0.67	22 (8%) 9 8	16, 25, 34, 39	0
1	D	245/257 (95%)	0.46	18 (7%) 15 14	15, 22, 37, 40	0
2	P	9/20 (45%)	0.96	1 (11%) 5 4	27, 28, 32, 34	0
2	Q	11/20 (55%)	1.23	2 (18%) 1 1	23, 24, 28, 32	0
2	R	10/20 (50%)	3.45	5 (50%) 0 0	40, 41, 45, 46	0
2	S	10/20 (50%)	2.42	4 (40%) 0 0	29, 32, 37, 39	0
All	All	1021/1108 (92%)	0.53	76 (7%) 14 14	14, 23, 34, 46	0

All (76) RSRZ outliers are listed below:

Mol	Chain	Res	Type	RSRZ
2	R	498	VAL	13.7
2	S	507	HIS	6.9
2	R	507	HIS	6.4
1	C	469	LYS	6.3
2	S	498	VAL	6.2
1	D	469	LYS	6.0
1	C	509	GLU	5.9
1	B	469	LYS	5.8
1	B	508	THR	5.2
1	C	508	THR	5.0
2	Q	508	LYS	4.9
1	C	488	HIS	4.6
1	C	458	HIS	4.6
2	Q	498	VAL	4.5
1	A	302	ARG	4.5
1	C	437	ARG	4.3

Continued on next page...

Continued from previous page...

Mol	Chain	Res	Type	RSRZ
1	B	464	ALA	4.2
1	D	288	ARG	4.2
1	D	294	ARG	4.1
1	C	470	GLY	4.1
1	B	302	ARG	4.0
1	C	294	ARG	4.0
1	A	339	SER	3.9
1	C	473	ARG	3.8
2	P	507	HIS	3.7
1	C	288	ARG	3.6
2	S	506	GLY	3.3
1	D	272	HIS	3.2
1	A	469	LYS	3.2
1	C	290	GLU	3.1
1	B	473	ARG	3.1
1	C	464	ALA	3.1
2	R	505	LEU	3.0
2	R	506	GLY	3.0
1	C	272	HIS	2.9
1	B	342	MET	2.9
1	D	473	ARG	2.8
1	B	339	SER	2.8
1	B	272	HIS	2.8
1	B	458	HIS	2.8
1	C	339	SER	2.8
1	D	456	LYS	2.8
1	A	297[A]	SER	2.7
1	A	429	HIS	2.7
1	B	491	PRO	2.7
2	R	503	LEU	2.6
1	C	395	GLU	2.6
1	B	489	LEU	2.6
1	B	294	ARG	2.6
1	A	294	ARG	2.5
1	D	508	THR	2.5
1	A	303	GLU	2.5
1	C	484	GLN	2.5
1	A	473	ARG	2.5
1	D	411	HIS	2.4
1	D	458	HIS	2.4
2	S	502	GLN	2.4
1	D	464	ALA	2.4

Continued on next page...

Continued from previous page...

Mol	Chain	Res	Type	RSRZ
1	D	457	THR	2.4
1	C	468	PRO	2.4
1	D	429	HIS	2.4
1	C	297	SER	2.4
1	D	297	SER	2.4
1	C	310	ARG	2.4
1	D	264	TYR	2.3
1	D	290	GLU	2.3
1	C	371	ALA	2.2
1	B	288	ARG	2.2
1	D	302	ARG	2.2
1	B	493[A]	VAL	2.2
1	D	310	ARG	2.1
1	D	470	GLY	2.1
1	B	290	GLU	2.1
1	A	495	GLN	2.0
1	C	264	TYR	2.0
1	C	387	LEU	2.0

6.2 Non-standard residues in protein, DNA, RNA chains [i](#)

There are no non-standard protein/DNA/RNA residues in this entry.

6.3 Carbohydrates [i](#)

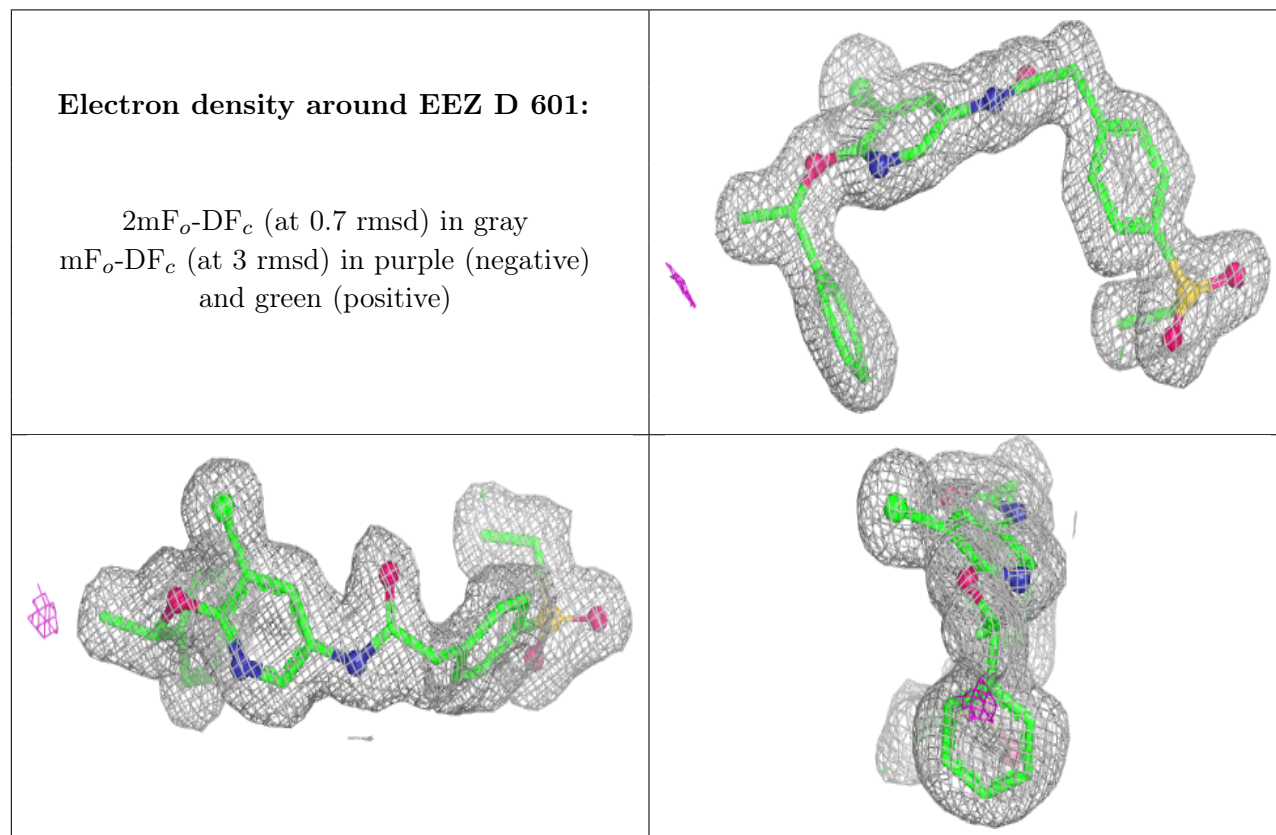
There are no monosaccharides in this entry.

6.4 Ligands [i](#)

In the following table, the Atoms column lists the number of modelled atoms in the group and the number defined in the chemical component dictionary. The B-factors column lists the minimum, median, 95th percentile and maximum values of B factors of atoms in the group. The column labelled 'Q< 0.9' lists the number of atoms with occupancy less than 0.9.

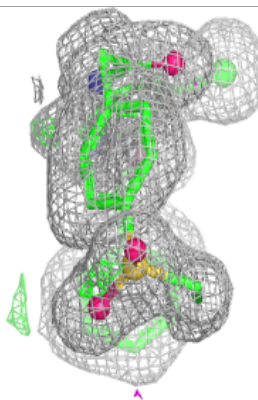
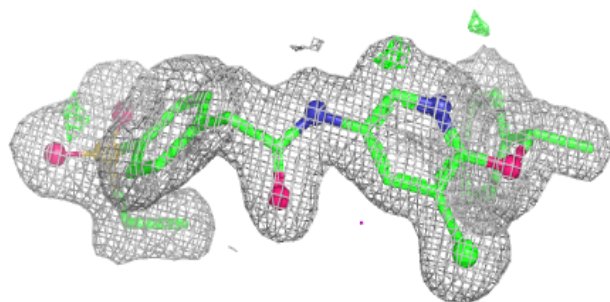
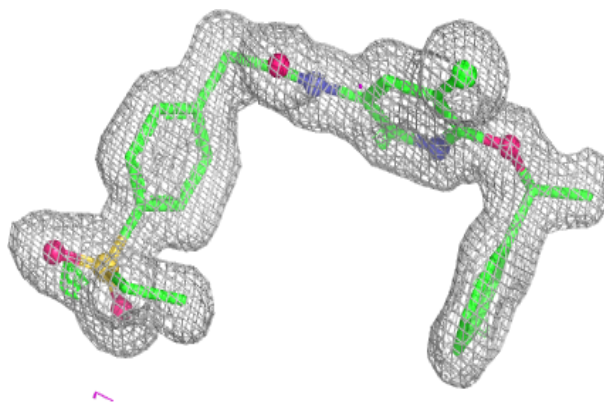
Mol	Type	Chain	Res	Atoms	RSCC	RSR	B-factors(Å ²)	Q<0.9
3	EEZ	D	601	31/31	0.95	0.09	17,19,24,24	0
3	EEZ	B	601	31/31	0.96	0.09	16,17,21,23	0
3	EEZ	C	601	31/31	0.97	0.09	16,18,24,25	0
3	EEZ	A	601	31/31	0.97	0.09	14,17,25,25	0

The following is a graphical depiction of the model fit to experimental electron density of all instances of the Ligand of Interest. In addition, ligands with molecular weight > 250 and outliers as shown on the geometry validation Tables will also be included. Each fit is shown from different orientation to approximate a three-dimensional view.

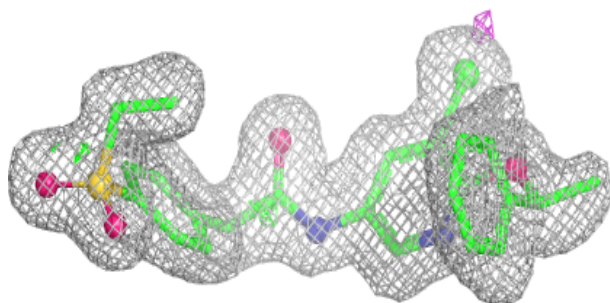
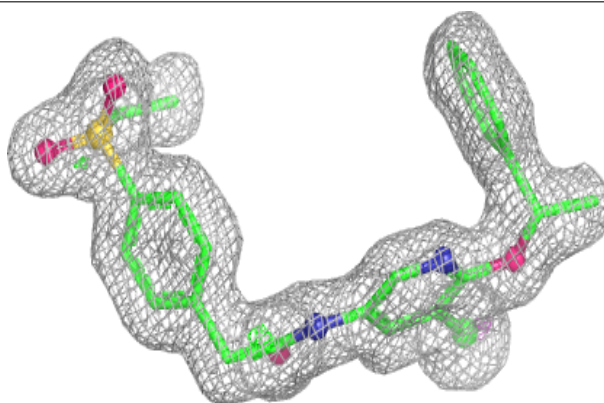


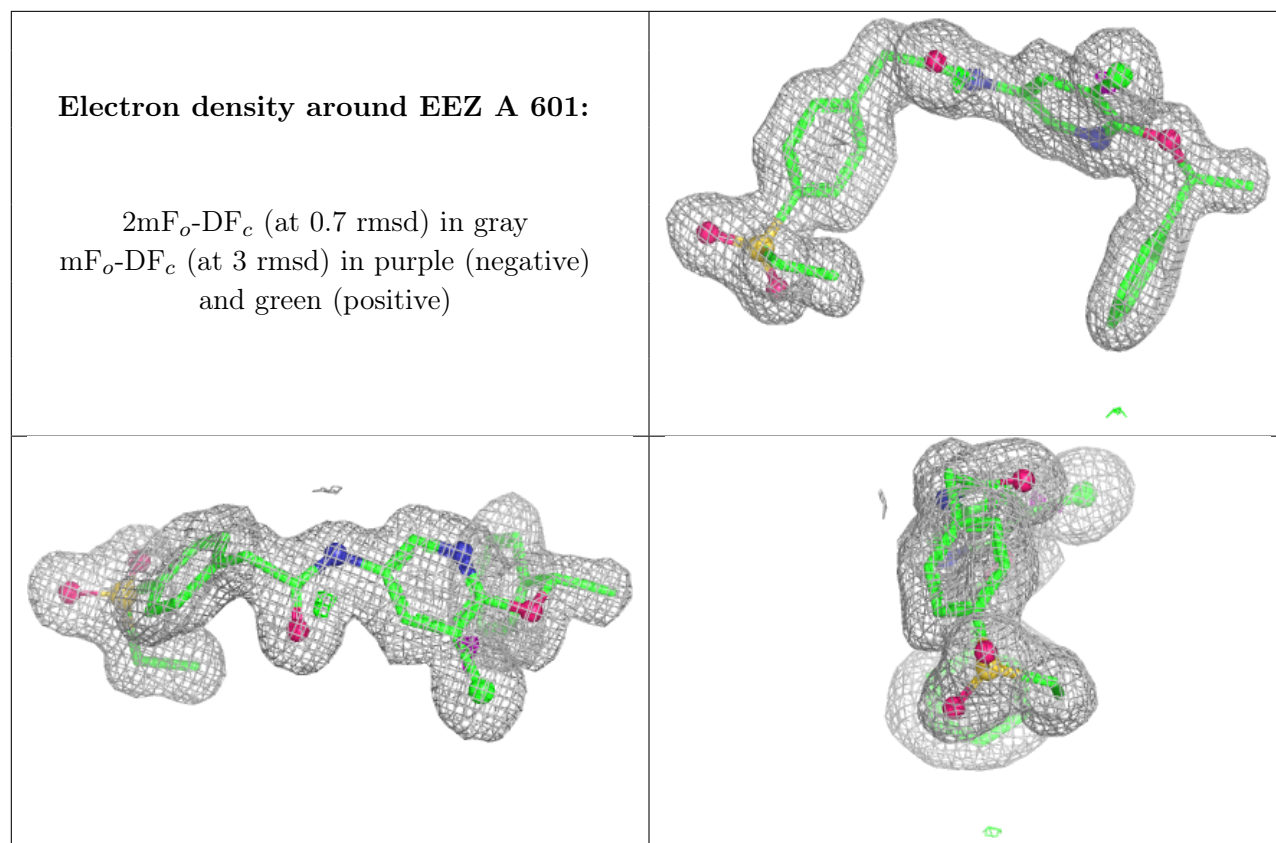
Electron density around EEZ B 601:

$2mF_o-DF_c$ (at 0.7 rmsd) in gray
 mF_o-DF_c (at 3 rmsd) in purple (negative)
and green (positive)

**Electron density around EEZ C 601:**

$2mF_o-DF_c$ (at 0.7 rmsd) in gray
 mF_o-DF_c (at 3 rmsd) in purple (negative)
and green (positive)





6.5 Other polymers [i](#)

There are no such residues in this entry.