



Full wwPDB X-ray Structure Validation Report ⓘ

May 13, 2020 – 08:26 am BST

PDB ID : 4G1Q
Title : Crystal structure of HIV-1 reverse transcriptase (RT) in complex with Rilpivirine (TMC278, Edurant), a non-nucleoside rt-inhibiting drug
Authors : Bauman, J.D.; Patel, D.; Das, K.; Arnold, E.
Deposited on : 2012-07-11
Resolution : 1.51 Å(reported)

This is a Full wwPDB X-ray Structure Validation Report for a publicly released PDB entry.

We welcome your comments at validation@mail.wwpdb.org

A user guide is available at

<https://www.wwpdb.org/validation/2017/XrayValidationReportHelp>

with specific help available everywhere you see the ⓘ symbol.

The following versions of software and data (see [references ⓘ](#)) were used in the production of this report:

MolProbity : 4.02b-467
Mogul : 1.8.5 (274361), CSD as541be (2020)
Xtriage (Phenix) : 1.13
EDS : 2.11
buster-report : 1.1.7 (2018)
Percentile statistics : 20191225.v01 (using entries in the PDB archive December 25th 2019)
Refmac : 5.8.0158
CCP4 : 7.0.044 (Gargrove)
Ideal geometry (proteins) : Engh & Huber (2001)
Ideal geometry (DNA, RNA) : Parkinson et al. (1996)
Validation Pipeline (wwPDB-VP) : 2.11

2 Entry composition [i](#)

There are 7 unique types of molecules in this entry. The entry contains 16771 atoms, of which 7881 are hydrogens and 0 are deuteriums.

In the tables below, the ZeroOcc column contains the number of atoms modelled with zero occupancy, the AltConf column contains the number of residues with at least one atom in alternate conformation and the Trace column contains the number of residues modelled with at most 2 atoms.

- Molecule 1 is a protein called Reverse transcriptase/ribonuclease H.

Mol	Chain	Residues	Atoms						ZeroOcc	AltConf	Trace
			Total	C	H	N	O	S			
1	A	556	9014	2931	4485	754	836	8	0	2	0

There are 5 discrepancies between the modelled and reference sequences:

Chain	Residue	Modelled	Actual	Comment	Reference
A	-1	MET	-	EXPRESSION TAG	UNP P03366
A	0	VAL	-	EXPRESSION TAG	UNP P03366
A	172	ALA	LYS	ENGINEERED MUTATION	UNP P03366
A	173	ALA	LYS	ENGINEERED MUTATION	UNP P03366
A	280	SER	CYS	ENGINEERED MUTATION	UNP P03366

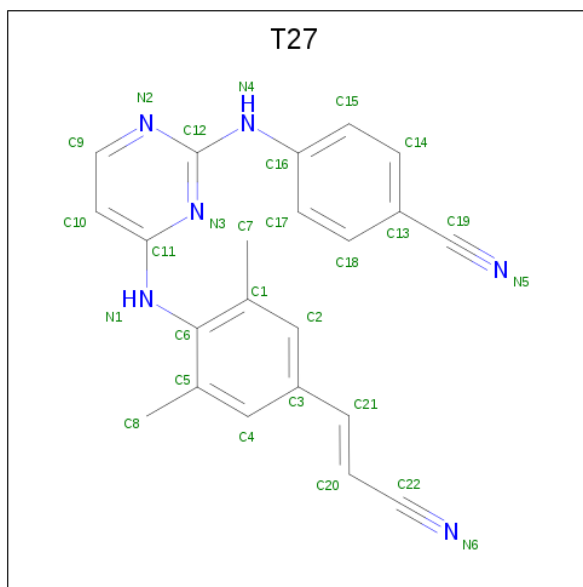
- Molecule 2 is a protein called p51 RT.

Mol	Chain	Residues	Atoms						ZeroOcc	AltConf	Trace
			Total	C	H	N	O	S			
2	B	416	6836	2254	3378	571	626	7	0	4	0

There is a discrepancy between the modelled and reference sequences:

Chain	Residue	Modelled	Actual	Comment	Reference
B	280	SER	CYS	ENGINEERED MUTATION	UNP P03366

- Molecule 3 is 4-{{4-({4-[(E)-2-cyanoethenyl]-2,6-dimethylphenyl}amino)pyrimidin-2-yl}amino}benzotrile (three-letter code: T27) (formula: C₂₂H₁₈N₆).



Mol	Chain	Residues	Atoms				ZeroOcc	AltConf
			Total	C	H	N		
3	A	1	46	22	18	6	0	0

- Molecule 4 is SULFATE ION (three-letter code: SO₄) (formula: O₄S).



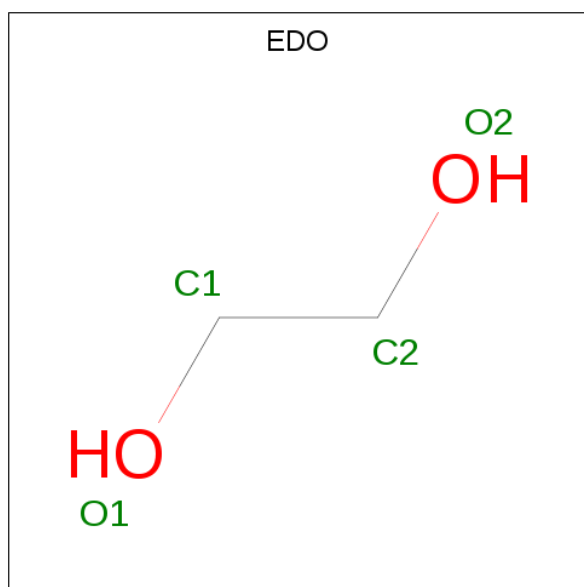
Mol	Chain	Residues	Atoms			ZeroOcc	AltConf
			Total	O	S		
4	A	1	5	4	1	0	0
4	A	1	5	4	1	0	0
4	A	1	5	4	1	0	0

Continued on next page...

Continued from previous page...

Mol	Chain	Residues	Atoms	ZeroOcc	AltConf
4	A	1	Total O S 5 4 1	0	0
4	B	1	Total O S 5 4 1	0	0
4	B	1	Total O S 5 4 1	0	0

- Molecule 5 is 1,2-ETHANEDIOL (three-letter code: EDO) (formula: C₂H₆O₂).



Mol	Chain	Residues	Atoms	ZeroOcc	AltConf
5	A	1	Total C O 4 2 2	0	0
5	A	1	Total C O 4 2 2	0	0
5	B	1	Total C O 4 2 2	0	0
5	B	1	Total C O 4 2 2	0	0
5	B	1	Total C O 4 2 2	0	0

- Molecule 6 is MAGNESIUM ION (three-letter code: MG) (formula: Mg).

Mol	Chain	Residues	Atoms	ZeroOcc	AltConf
6	A	1	Total Mg 1 1	0	0

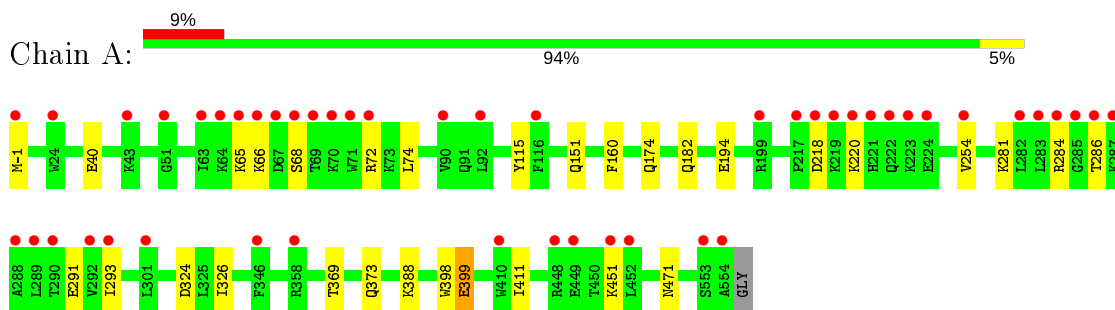
- Molecule 7 is water.

Mol	Chain	Residues	Atoms		ZeroOcc	AltConf
7	A	510	Total 510	O 510	0	0
7	B	314	Total 314	O 314	0	0

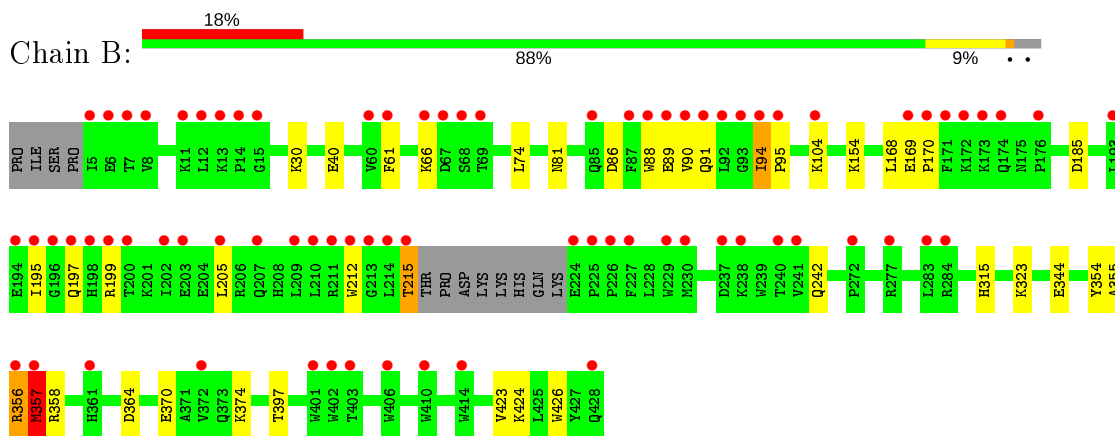
3 Residue-property plots [i](#)

These plots are drawn for all protein, RNA and DNA chains in the entry. The first graphic for a chain summarises the proportions of the various outlier classes displayed in the second graphic. The second graphic shows the sequence view annotated by issues in geometry and electron density. Residues are color-coded according to the number of geometric quality criteria for which they contain at least one outlier: green = 0, yellow = 1, orange = 2 and red = 3 or more. A red dot above a residue indicates a poor fit to the electron density ($RSRZ > 2$). Stretches of 2 or more consecutive residues without any outlier are shown as a green connector. Residues present in the sample, but not in the model, are shown in grey.

- Molecule 1: Reverse transcriptase/ribonuclease H



- Molecule 2: p51 RT



4 Data and refinement statistics

Property	Value	Source
Space group	C 1 2 1	Depositor
Cell constants a, b, c, α , β , γ	162.71Å 72.52Å 109.51Å 90.00° 100.84° 90.00°	Depositor
Resolution (Å)	35.85 – 1.51 37.94 – 1.50	Depositor EDS
% Data completeness (in resolution range)	97.0 (35.85-1.51) 96.7 (37.94-1.50)	Depositor EDS
R_{merge}	0.06	Depositor
R_{sym}	(Not available)	Depositor
$\langle I/\sigma(I) \rangle$ ¹	1.57 (at 1.50Å)	Xtrriage
Refinement program	PHENIX (phenix.refine: 1.7.3_928)	Depositor
R, R_{free}	0.154 , 0.193 0.151 , 0.188	Depositor DCC
R_{free} test set	3899 reflections (2.01%)	wwPDB-VP
Wilson B-factor (Å ²)	24.8	Xtrriage
Anisotropy	0.031	Xtrriage
Bulk solvent k_{sol} (e/Å ³), B_{sol} (Å ²)	0.43 , 55.9	EDS
L-test for twinning ²	$\langle L \rangle = 0.50$, $\langle L^2 \rangle = 0.33$	Xtrriage
Estimated twinning fraction	No twinning to report.	Xtrriage
F_o, F_c correlation	0.97	EDS
Total number of atoms	16771	wwPDB-VP
Average B, all atoms (Å ²)	41.0	wwPDB-VP

Xtrriage's analysis on translational NCS is as follows: *The largest off-origin peak in the Patterson function is 4.24% of the height of the origin peak. No significant pseudotranslation is detected.*

¹ Intensities estimated from amplitudes.

² Theoretical values of $\langle |L| \rangle$, $\langle L^2 \rangle$ for acentric reflections are 0.5, 0.333 respectively for untwinned datasets, and 0.375, 0.2 for perfectly twinned datasets.

5 Model quality [i](#)

5.1 Standard geometry [i](#)

Bond lengths and bond angles in the following residue types are not validated in this section: MG, SO4, T27, EDO

The Z score for a bond length (or angle) is the number of standard deviations the observed value is removed from the expected value. A bond length (or angle) with $|Z| > 5$ is considered an outlier worth inspection. RMSZ is the root-mean-square of all Z scores of the bond lengths (or angles).

Mol	Chain	Bond lengths		Bond angles	
		RMSZ	# Z >5	RMSZ	# Z >5
1	A	0.62	1/4654 (0.0%)	0.67	0/6325
2	B	0.60	0/3573	0.68	3/4855 (0.1%)
All	All	0.61	1/8227 (0.0%)	0.67	3/11180 (0.0%)

All (1) bond length outliers are listed below:

Mol	Chain	Res	Type	Atoms	Z	Observed(Å)	Ideal(Å)
1	A	399	GLU	CG-CD	-5.23	1.44	1.51

All (3) bond angle outliers are listed below:

Mol	Chain	Res	Type	Atoms	Z	Observed(°)	Ideal(°)
2	B	357	MET	CB-CG-SD	7.55	135.04	112.40
2	B	364	ASP	CB-CA-C	-5.44	99.52	110.40
2	B	185	ASP	CB-CG-OD2	-5.25	113.58	118.30

There are no chirality outliers.

There are no planarity outliers.

5.2 Too-close contacts [i](#)

In the following table, the Non-H and H(model) columns list the number of non-hydrogen atoms and hydrogen atoms in the chain respectively. The H(added) column lists the number of hydrogen atoms added and optimized by MolProbity. The Clashes column lists the number of clashes within the asymmetric unit, whereas Symm-Clashes lists symmetry related clashes.

Mol	Chain	Non-H	H(model)	H(added)	Clashes	Symm-Clashes
1	A	4529	4485	4589	23	0
2	B	3458	3378	3473	42	0

Continued on next page...

Continued from previous page...

Mol	Chain	Non-H	H(model)	H(added)	Clashes	Symm-Clashes
3	A	28	18	18	1	0
4	A	20	0	0	0	0
4	B	10	0	0	0	0
5	A	8	0	12	0	0
5	B	12	0	18	0	0
6	A	1	0	0	0	0
7	A	510	0	0	5	0
7	B	314	0	0	6	0
All	All	8890	7881	8110	65	0

The all-atom clashscore is defined as the number of clashes found per 1000 atoms (including hydrogen atoms). The all-atom clashscore for this structure is 4.

All (65) close contacts within the same asymmetric unit are listed below, sorted by their clash magnitude.

Atom-1	Atom-2	Interatomic distance (Å)	Clash overlap (Å)
2:B:94:ILE:HG21	7:B:892:HOH:O	1.85	0.76
2:B:212:TRP:O	2:B:215:THR:HG22	1.85	0.75
2:B:94:ILE:O	2:B:94:ILE:HG23	1.89	0.71
1:A:286:THR:HG21	1:A:291:GLU:OE1	1.92	0.68
2:B:30:LYS:NZ	7:B:839:HOH:O	2.27	0.66
2:B:195:ILE:HD11	2:B:199:ARG:CZ	2.27	0.64
2:B:356:ARG:HD2	2:B:357:MET:CE	2.27	0.64
2:B:358:ARG:NH2	2:B:370[B]:GLU:OE1	2.31	0.64
1:A:324:ASP:OD2	1:A:388:LYS:NZ	2.29	0.62
2:B:86:ASP:HB3	2:B:88:TRP:CE2	2.35	0.62
2:B:195:ILE:HD11	2:B:199:ARG:NH2	2.15	0.61
1:A:218:ASP:O	1:A:220:LYS:HD2	2.00	0.61
1:A:373[A]:GLN:NE2	2:B:397:THR:OG1	2.35	0.60
2:B:66:LYS:HE2	2:B:358:ARG:HD2	1.85	0.59
2:B:315[B]:HIS:CE1	7:B:827:HOH:O	2.56	0.58
2:B:94:ILE:C	2:B:94:ILE:HD13	2.24	0.58
2:B:40:GLU:HG2	7:B:701:HOH:O	2.05	0.56
2:B:356:ARG:CD	2:B:356:ARG:H	2.18	0.56
2:B:354:TYR:HB3	2:B:357:MET:HE1	1.88	0.56
2:B:89:GLU:HG3	2:B:90:VAL:N	2.22	0.55
1:A:65:LYS:O	1:A:68:SER:HB3	2.07	0.54
1:A:254:VAL:HG23	1:A:293:ILE:HD11	1.89	0.54
2:B:94:ILE:C	2:B:94:ILE:CD1	2.76	0.54
1:A:293:ILE:HD12	1:A:293:ILE:N	2.24	0.53
2:B:354:TYR:HB3	2:B:357:MET:CE	2.39	0.53

Continued on next page...

Continued from previous page...

Atom-1	Atom-2	Interatomic distance (Å)	Clash overlap (Å)
3:A:601:T27:H17	3:A:601:T27:N3	2.24	0.53
1:A:174:GLN:HB3	7:A:1165:HOH:O	2.10	0.52
2:B:89:GLU:HG3	2:B:90:VAL:H	1.75	0.52
2:B:323:LYS:NZ	2:B:344:GLU:OE2	2.40	0.51
2:B:91:GLN:N	2:B:91:GLN:OE1	2.43	0.51
2:B:424:LYS:HD2	7:B:913:HOH:O	2.11	0.51
2:B:356:ARG:HD3	2:B:374:LYS:NZ	2.26	0.50
2:B:94:ILE:O	2:B:94:ILE:CG2	2.59	0.50
1:A:326:ILE:HD13	1:A:388:LYS:HB2	1.96	0.48
2:B:356:ARG:H	2:B:356:ARG:HD2	1.78	0.48
1:A:115:TYR:CZ	1:A:151:GLN:NE2	2.82	0.47
2:B:89:GLU:HG3	2:B:90:VAL:HG23	1.97	0.47
1:A:451:LYS:HE3	1:A:471:ASN:OD1	2.15	0.47
1:A:174:GLN:CB	7:A:1165:HOH:O	2.63	0.46
1:A:254:VAL:HG23	1:A:293:ILE:CD1	2.45	0.46
2:B:356:ARG:H	2:B:356:ARG:NE	2.14	0.46
2:B:66:LYS:HE2	2:B:358:ARG:CD	2.45	0.46
1:A:369:THR:O	1:A:373[B]:GLN:HG2	2.15	0.46
2:B:423:VAL:HA	2:B:426:TRP:CD1	2.51	0.46
1:A:72:ARG:HD2	7:A:1144:HOH:O	2.16	0.45
2:B:94:ILE:HD13	2:B:95:PRO:N	2.32	0.45
1:A:369:THR:HG22	1:A:373[A]:GLN:NE2	2.32	0.45
2:B:81:ASN:O	2:B:154:LYS:HE2	2.16	0.44
1:A:40:GLU:HG2	7:A:1036:HOH:O	2.17	0.44
2:B:168:LEU:HD22	2:B:205:LEU:HD11	1.99	0.44
2:B:94:ILE:HA	2:B:95:PRO:HD2	1.83	0.44
2:B:355:ALA:H	2:B:356:ARG:HE	1.65	0.43
2:B:86:ASP:HB3	2:B:88:TRP:CZ2	2.53	0.43
1:A:451:LYS:HE3	1:A:471:ASN:HA	2.01	0.43
2:B:169:GLU:N	2:B:170:PRO:CD	2.83	0.42
1:A:115:TYR:HA	1:A:160:PHE:CE1	2.55	0.42
1:A:74:LEU:C	1:A:74:LEU:HD23	2.41	0.41
2:B:89:GLU:CG	2:B:90:VAL:H	2.33	0.41
2:B:104:LYS:HE2	2:B:104:LYS:HB3	1.87	0.41
2:B:424:LYS:CD	7:B:913:HOH:O	2.68	0.41
1:A:281:LYS:O	1:A:284:ARG:HD2	2.21	0.41
1:A:182:GLN:OE1	7:A:1208:HOH:O	2.22	0.40
2:B:61:PHE:CZ	2:B:74:LEU:HD23	2.56	0.40
1:A:398:TRP:CZ2	1:A:411:ILE:HG12	2.56	0.40
2:B:355:ALA:H	2:B:356:ARG:NE	2.20	0.40

There are no symmetry-related clashes.

5.3 Torsion angles [i](#)

5.3.1 Protein backbone [i](#)

In the following table, the Percentiles column shows the percent Ramachandran outliers of the chain as a percentile score with respect to all X-ray entries followed by that with respect to entries of similar resolution.

The Analysed column shows the number of residues for which the backbone conformation was analysed, and the total number of residues.

Mol	Chain	Analysed	Favoured	Allowed	Outliers	Percentiles	
1	A	556/557 (100%)	542 (98%)	13 (2%)	1 (0%)	47	23
2	B	416/428 (97%)	401 (96%)	15 (4%)	0	100	100
All	All	972/985 (99%)	943 (97%)	28 (3%)	1 (0%)	51	25

All (1) Ramachandran outliers are listed below:

Mol	Chain	Res	Type
1	A	66	LYS

5.3.2 Protein sidechains [i](#)

In the following table, the Percentiles column shows the percent sidechain outliers of the chain as a percentile score with respect to all X-ray entries followed by that with respect to entries of similar resolution.

The Analysed column shows the number of residues for which the sidechain conformation was analysed, and the total number of residues.

Mol	Chain	Analysed	Rotameric	Outliers	Percentiles	
1	A	497/495 (100%)	494 (99%)	3 (1%)	86	73
2	B	381/390 (98%)	375 (98%)	6 (2%)	62	35
All	All	878/885 (99%)	869 (99%)	9 (1%)	76	56

All (9) residues with a non-rotameric sidechain are listed below:

Mol	Chain	Res	Type
1	A	-1	MET
1	A	194	GLU
1	A	399	GLU
2	B	94	ILE
2	B	197	GLN

Continued on next page...

Continued from previous page...

Mol	Chain	Res	Type
2	B	215	THR
2	B	242	GLN
2	B	356	ARG
2	B	357	MET

Some sidechains can be flipped to improve hydrogen bonding and reduce clashes. All (4) such sidechains are listed below:

Mol	Chain	Res	Type
1	A	151	GLN
1	A	258	GLN
2	B	161	GLN
2	B	197	GLN

5.3.3 RNA [i](#)

There are no RNA molecules in this entry.

5.4 Non-standard residues in protein, DNA, RNA chains [i](#)

There are no non-standard protein/DNA/RNA residues in this entry.

5.5 Carbohydrates [i](#)

There are no carbohydrates in this entry.

5.6 Ligand geometry [i](#)

Of 13 ligands modelled in this entry, 1 is monoatomic - leaving 12 for Mogul analysis.

In the following table, the Counts columns list the number of bonds (or angles) for which Mogul statistics could be retrieved, the number of bonds (or angles) that are observed in the model and the number of bonds (or angles) that are defined in the Chemical Component Dictionary. The Link column lists molecule types, if any, to which the group is linked. The Z score for a bond length (or angle) is the number of standard deviations the observed value is removed from the expected value. A bond length (or angle) with $|Z| > 2$ is considered an outlier worth inspection. RMSZ is the root-mean-square of all Z scores of the bond lengths (or angles).

Mol	Type	Chain	Res	Link	Bond lengths			Bond angles		
					Counts	RMSZ	$\# Z > 2$	Counts	RMSZ	$\# Z > 2$
5	EDO	B	503	-	3,3,3	0.36	0	2,2,2	0.08	0

Mol	Type	Chain	Res	Link	Bond lengths			Bond angles		
					Counts	RMSZ	# Z > 2	Counts	RMSZ	# Z > 2
4	SO4	B	502	-	4,4,4	0.24	0	6,6,6	0.35	0
5	EDO	A	607	-	3,3,3	0.61	0	2,2,2	0.43	0
4	SO4	B	501	-	4,4,4	0.28	0	6,6,6	0.18	0
5	EDO	A	606	-	3,3,3	0.36	0	2,2,2	0.58	0
4	SO4	A	605	-	4,4,4	0.19	0	6,6,6	0.22	0
4	SO4	A	602	-	4,4,4	0.17	0	6,6,6	0.34	0
5	EDO	B	505	-	3,3,3	0.34	0	2,2,2	0.47	0
4	SO4	A	604	-	4,4,4	0.19	0	6,6,6	0.07	0
4	SO4	A	603	-	4,4,4	0.19	0	6,6,6	0.25	0
3	T27	A	601	-	30,30,30	0.98	3 (10%)	39,40,40	1.49	7 (17%)
5	EDO	B	504	-	3,3,3	0.38	0	2,2,2	0.38	0

In the following table, the Chirals column lists the number of chiral outliers, the number of chiral centers analysed, the number of these observed in the model and the number defined in the Chemical Component Dictionary. Similar counts are reported in the Torsion and Rings columns. '-' means no outliers of that kind were identified.

Mol	Type	Chain	Res	Link	Chirals	Torsions	Rings
5	EDO	B	503	-	-	0/1/1/1	-
5	EDO	A	607	-	-	0/1/1/1	-
5	EDO	A	606	-	-	0/1/1/1	-
5	EDO	B	505	-	-	0/1/1/1	-
3	T27	A	601	-	-	1/13/14/14	0/3/3/3
5	EDO	B	504	-	-	0/1/1/1	-

All (3) bond length outliers are listed below:

Mol	Chain	Res	Type	Atoms	Z	Observed(Å)	Ideal(Å)
3	A	601	T27	C4-C3	-2.26	1.36	1.39
3	A	601	T27	C13-C19	2.20	1.49	1.44
3	A	601	T27	C6-C5	-2.05	1.36	1.40

All (7) bond angle outliers are listed below:

Mol	Chain	Res	Type	Atoms	Z	Observed(°)	Ideal(°)
3	A	601	T27	C9-C10-C11	4.00	119.38	116.76
3	A	601	T27	C10-C9-N2	-2.95	120.29	123.96
3	A	601	T27	C6-N1-C11	-2.84	119.04	124.18
3	A	601	T27	C7-C1-C6	-2.41	118.33	121.44
3	A	601	T27	C10-C11-N3	-2.35	119.20	123.16
3	A	601	T27	C15-C16-N4	-2.31	112.91	120.64
3	A	601	T27	C17-C16-N4	2.09	127.65	120.64

There are no chirality outliers.

All (1) torsion outliers are listed below:

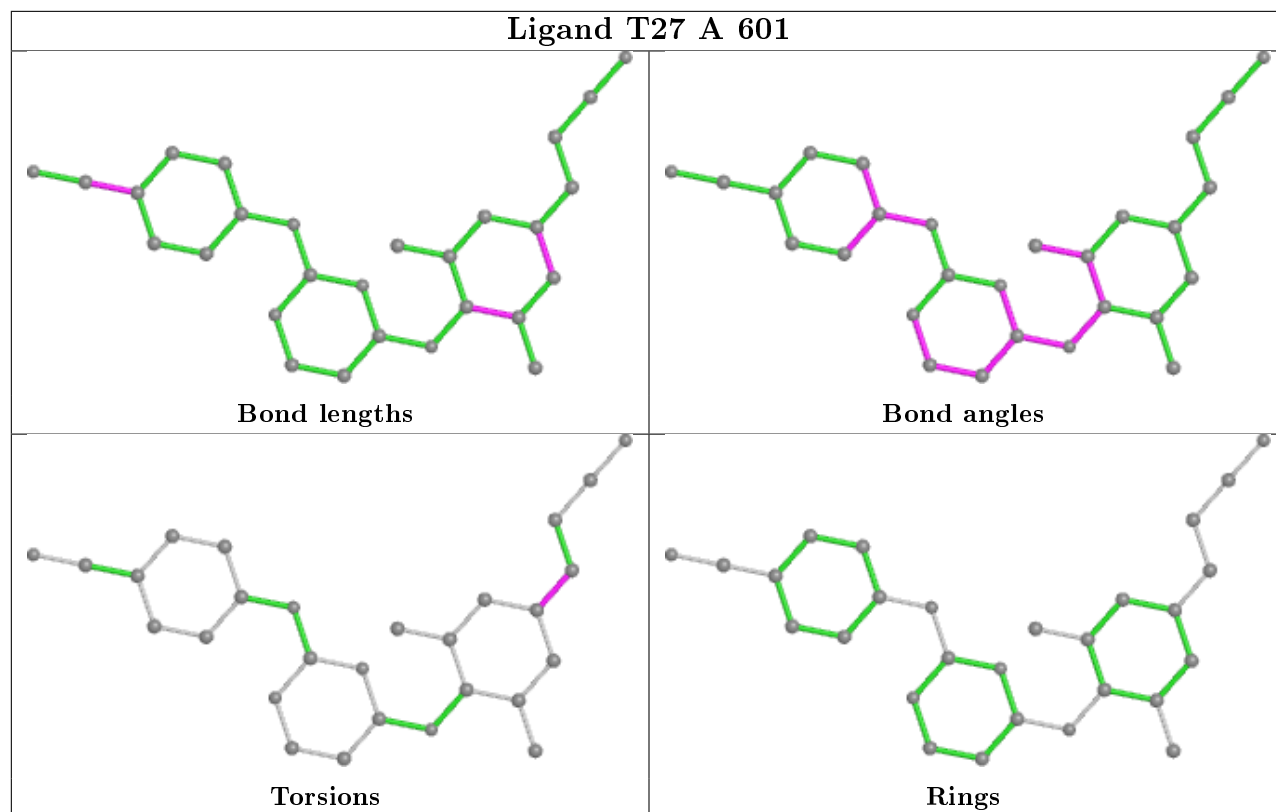
Mol	Chain	Res	Type	Atoms
3	A	601	T27	C20-C21-C3-C2

There are no ring outliers.

1 monomer is involved in 1 short contact:

Mol	Chain	Res	Type	Clashes	Symm-Clashes
3	A	601	T27	1	0

The following is a two-dimensional graphical depiction of Mogul quality analysis of bond lengths, bond angles, torsion angles, and ring geometry for all instances of the Ligand of Interest. In addition, ligands with molecular weight > 250 and outliers as shown on the validation Tables will also be included. For torsion angles, if less than 5% of the Mogul distribution of torsion angles is within 10 degrees of the torsion angle in question, then that torsion angle is considered an outlier. Any bond that is central to one or more torsion angles identified as an outlier by Mogul will be highlighted in the graph. For rings, the root-mean-square deviation (RMSD) between the ring in question and similar rings identified by Mogul is calculated over all ring torsion angles. If the average RMSD is greater than 60 degrees and the minimal RMSD between the ring in question and any Mogul-identified rings is also greater than 60 degrees, then that ring is considered an outlier. The outliers are highlighted in purple. The color gray indicates Mogul did not find sufficient equivalents in the CSD to analyse the geometry.



5.7 Other polymers [\(i\)](#)

There are no such residues in this entry.

5.8 Polymer linkage issues [\(i\)](#)

There are no chain breaks in this entry.

6 Fit of model and data

6.1 Protein, DNA and RNA chains

In the following table, the column labelled ‘#RSRZ> 2’ contains the number (and percentage) of RSRZ outliers, followed by percent RSRZ outliers for the chain as percentile scores relative to all X-ray entries and entries of similar resolution. The OWAB column contains the minimum, median, 95th percentile and maximum values of the occupancy-weighted average B-factor per residue. The column labelled ‘Q< 0.9’ lists the number of (and percentage) of residues with an average occupancy less than 0.9.

Mol	Chain	Analysed	<RSRZ>	#RSRZ>2	OWAB(Å ²)	Q<0.9
1	A	556/557 (99%)	0.34	48 (8%) 10 11	18, 32, 63, 91	0
2	B	416/428 (97%)	0.91	77 (18%) 1 1	19, 34, 71, 102	0
All	All	972/985 (98%)	0.58	125 (12%) 3 3	18, 33, 70, 102	0

All (125) RSRZ outliers are listed below:

Mol	Chain	Res	Type	RSRZ
2	B	92	LEU	28.4
2	B	90	VAL	14.5
2	B	214	LEU	13.5
1	A	219	LYS	9.8
1	A	69	THR	9.4
2	B	88	TRP	8.9
2	B	95	PRO	8.6
1	A	287	LYS	8.5
1	A	66	LYS	8.2
1	A	286	THR	7.9
1	A	67	ASP	7.7
2	B	229	TRP	7.6
2	B	91	GLN	7.5
1	A	289	LEU	7.5
1	A	220	LYS	7.1
2	B	93	GLY	7.1
2	B	196	GLY	6.7
1	A	554	ALA	6.6
2	B	215	THR	6.5
1	A	218	ASP	6.4
2	B	89	GLU	6.3
1	A	68	SER	6.3
2	B	195	ILE	6.3
2	B	209	LEU	6.2

Continued on next page...

Continued from previous page...

Mol	Chain	Res	Type	RSRZ
2	B	356	ARG	6.2
1	A	222	GLN	6.0
2	B	212	TRP	5.9
1	A	221	HIS	5.9
1	A	283	LEU	5.5
1	A	70	LYS	5.5
2	B	5	ILE	5.5
1	A	285	GLY	5.4
2	B	200	THR	5.3
1	A	65	LYS	5.2
1	A	24	TRP	5.1
2	B	240	THR	5.1
1	A	92	LEU	5.0
2	B	193	LEU	4.9
1	A	288	ALA	4.6
2	B	14	PRO	4.3
2	B	238	LYS	4.2
1	A	449	GLU	4.1
2	B	173	LYS	4.1
1	A	290	THR	4.1
2	B	67	ASP	4.0
2	B	66	LYS	4.0
2	B	210	LEU	3.9
2	B	197	GLN	3.9
1	A	358	ARG	3.9
2	B	284	ARG	3.9
2	B	69	THR	3.8
2	B	226	PRO	3.8
1	A	63	ILE	3.8
2	B	6	GLU	3.7
2	B	205	LEU	3.7
2	B	241	VAL	3.6
2	B	7	THR	3.6
2	B	176	PRO	3.6
2	B	213	GLY	3.6
2	B	171	PHE	3.5
2	B	410	TRP	3.4
2	B	11	LYS	3.4
2	B	237	ASP	3.4
2	B	406	TRP	3.4
2	B	12	LEU	3.4
2	B	202	ILE	3.4

Continued on next page...

Continued from previous page...

Mol	Chain	Res	Type	RSRZ
2	B	272	PRO	3.4
2	B	174	GLN	3.3
2	B	225	PRO	3.3
1	A	448	ARG	3.3
1	A	293	ILE	3.3
2	B	94	ILE	3.3
2	B	357	MET	3.3
1	A	292	VAL	3.3
1	A	284	ARG	3.2
1	A	-1	MET	3.2
2	B	87	PHE	3.1
1	A	64	LYS	3.0
1	A	254	VAL	3.0
2	B	85	GLN	2.9
2	B	227	PHE	2.9
2	B	198	HIS	2.9
2	B	361	HIS	2.9
2	B	224	GLU	2.9
2	B	199	ARG	2.9
2	B	8	VAL	2.9
2	B	402	TRP	2.8
1	A	71	TRP	2.8
1	A	223	LYS	2.8
1	A	410	TRP	2.8
2	B	15	GLY	2.7
1	A	452	LEU	2.7
2	B	428	GLN	2.5
2	B	68	SER	2.5
2	B	170	PRO	2.4
1	A	217	PRO	2.4
1	A	51	GLY	2.4
1	A	224	GLU	2.4
1	A	116	PHE	2.4
2	B	61	PHE	2.4
2	B	211	ARG	2.4
2	B	169	GLU	2.4
2	B	230	MET	2.4
2	B	283	LEU	2.3
1	A	90	VAL	2.3
2	B	60	VAL	2.3
2	B	401	TRP	2.3
1	A	301	LEU	2.3

Continued on next page...

Continued from previous page...

Mol	Chain	Res	Type	RSRZ
2	B	203	GLU	2.3
2	B	403	THR	2.2
2	B	194	GLU	2.2
2	B	277	ARG	2.2
2	B	13	LYS	2.2
1	A	346	PHE	2.1
1	A	282	LEU	2.1
1	A	43	LYS	2.1
2	B	372	VAL	2.1
1	A	553	SER	2.1
2	B	414	TRP	2.1
1	A	72	ARG	2.0
1	A	199	ARG	2.0
1	A	451	LYS	2.0
2	B	104	LYS	2.0
2	B	172	LYS	2.0
2	B	207	GLN	2.0

6.2 Non-standard residues in protein, DNA, RNA chains [i](#)

There are no non-standard protein/DNA/RNA residues in this entry.

6.3 Carbohydrates [i](#)

There are no carbohydrates in this entry.

6.4 Ligands [i](#)

In the following table, the Atoms column lists the number of modelled atoms in the group and the number defined in the chemical component dictionary. The B-factors column lists the minimum, median, 95th percentile and maximum values of B factors of atoms in the group. The column labelled 'Q< 0.9' lists the number of atoms with occupancy less than 0.9.

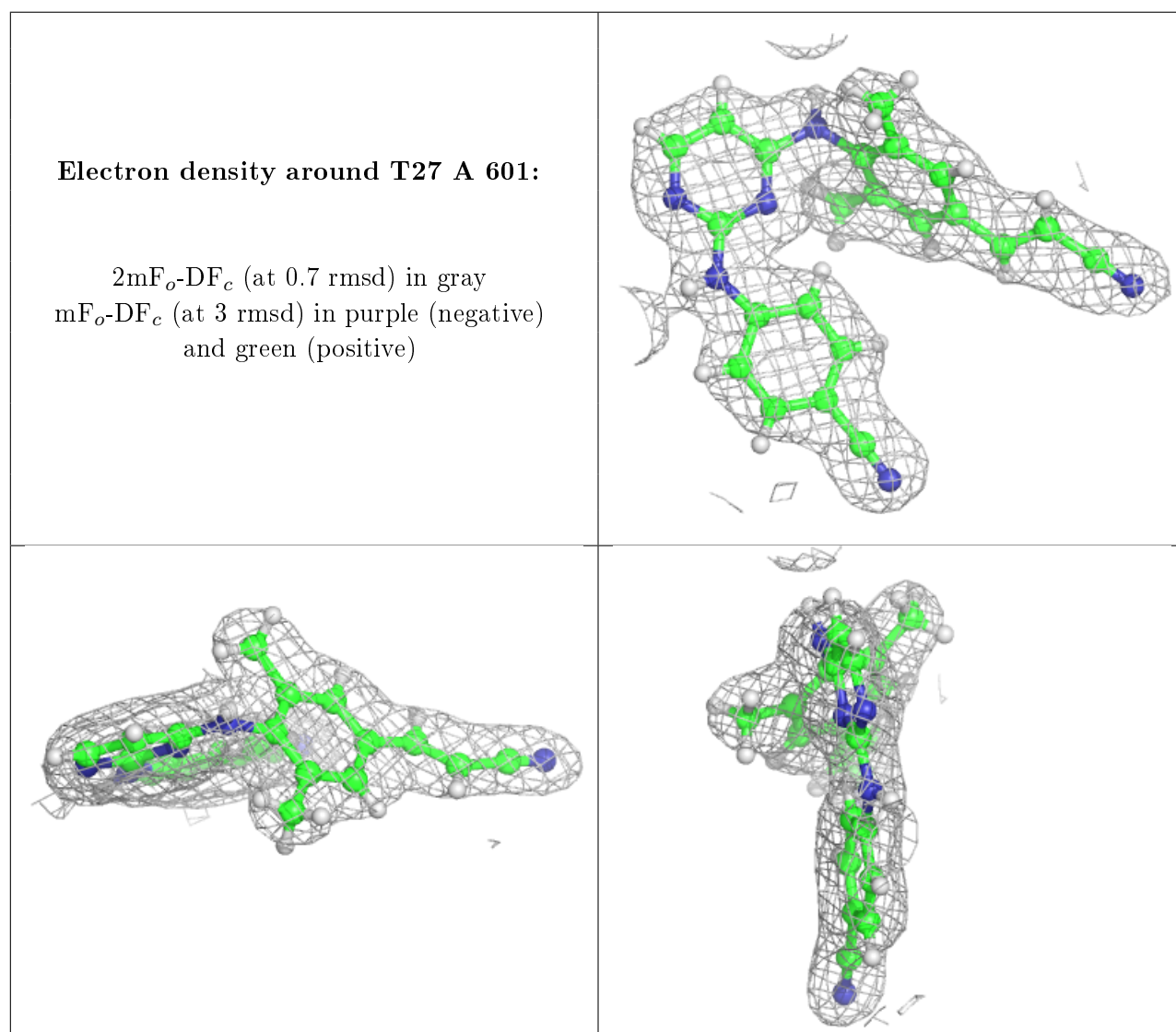
Mol	Type	Chain	Res	Atoms	RSCC	RSR	B-factors(Å ²)	Q<0.9
5	EDO	B	505	4/4	0.89	0.13	47,48,49,50	0
5	EDO	A	607	4/4	0.93	0.18	41,46,47,50	0
4	SO4	B	501	5/5	0.94	0.25	62,62,66,66	0
4	SO4	B	502	5/5	0.94	0.13	76,77,79,80	0
5	EDO	A	606	4/4	0.95	0.10	31,34,39,43	0
4	SO4	A	602	5/5	0.96	0.09	55,56,59,63	0

Continued on next page...

Continued from previous page...

Mol	Type	Chain	Res	Atoms	RSCC	RSR	B-factors(\AA^2)	Q<0.9
5	EDO	B	503	4/4	0.96	0.15	40,42,45,46	0
4	SO4	A	605	5/5	0.97	0.18	74,74,75,75	0
4	SO4	A	604	5/5	0.97	0.12	74,74,75,76	0
4	SO4	A	603	5/5	0.97	0.08	61,61,63,64	0
3	T27	A	601	28/28	0.97	0.09	23,30,38,45	0
6	MG	A	608	1/1	0.98	0.05	42,42,42,42	0
5	EDO	B	504	4/4	0.98	0.07	38,39,41,41	0

The following is a graphical depiction of the model fit to experimental electron density of all instances of the Ligand of Interest. In addition, ligands with molecular weight > 250 and outliers as shown on the geometry validation Tables will also be included. Each fit is shown from different orientation to approximate a three-dimensional view.



6.5 Other polymers [i](#)

There are no such residues in this entry.