



Full wwPDB X-ray Structure Validation Report

Dec 12, 2024 – 06:52 PM EST

PDB ID : 7G4W
Title : Crystal Structure of rat Autotaxin in complex with (6-chloro-9H-carbazol-2-yl)-[(1R,2S,6R,7S)-4,9-diazatricyclo[5.3.0.0-2,6]decan-4-yl]methanone, i.e. SMILES N1(C[C@H]2[C@@H](C1)[C@H]1[C@@H]2CN(C1)C(=O)c1ccc2c(c1)N=NN2)C(=O)c1ccc2-c3c(Nc2c1)ccc(c3)Cl with IC50=0.26635 microM
Authors : Stihle, M.; Benz, J.; Hunziker, D.; Mattei, P.; Rudolph, M.G.
Deposited on : 2023-06-05
Resolution : 1.85 Å(reported)

This is a Full wwPDB X-ray Structure Validation Report for a publicly released PDB entry.

We welcome your comments at validation@mail.wwpdb.org

A user guide is available at

<https://www.wwpdb.org/validation/2017/XrayValidationReportHelp>

with specific help available everywhere you see the  symbol.

The types of validation reports are described at

<http://www.wwpdb.org/validation/2017/FAQs#types>.

The following versions of software and data (see [references](#) ①) were used in the production of this report:

MolProbity : 4.02b-467
Mogul : 2022.3.0, CSD as543be (2022)
Xtrriage (Phenix) : 1.21
EDS : 3.0
buster-report : 1.1.7 (2018)
Percentile statistics : 20231227.v01 (using entries in the PDB archive December 27th 2023)
CCP4 : 9.0.004 (Gargrove)
Density-Fitness : 1.0.11
Ideal geometry (proteins) : Engh & Huber (2001)
Ideal geometry (DNA, RNA) : Parkinson et al. (1996)
Validation Pipeline (wwPDB-VP) : 2.40

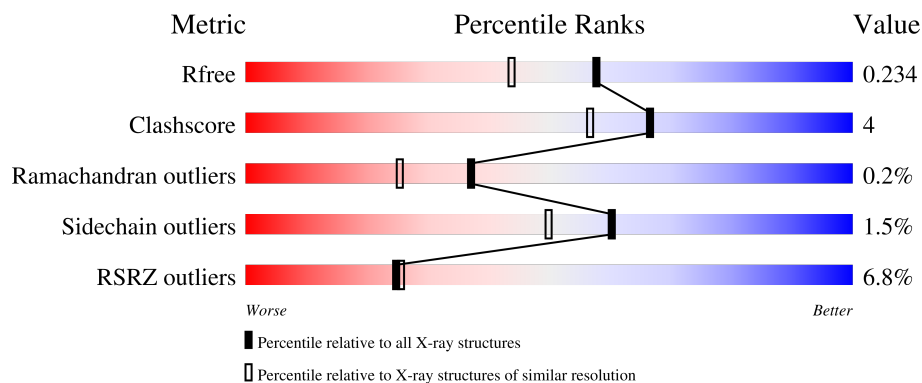
1 Overall quality at a glance i

The following experimental techniques were used to determine the structure:

X-RAY DIFFRACTION

The reported resolution of this entry is 1.85 Å.

Percentile scores (ranging between 0-100) for global validation metrics of the entry are shown in the following graphic. The table shows the number of entries on which the scores are based.



Metric	Whole archive (#Entries)	Similar resolution (#Entries, resolution range(Å))
R_{free}	164625	3097 (1.86-1.86)
Clashscore	180529	3359 (1.86-1.86)
Ramachandran outliers	177936	3335 (1.86-1.86)
Sidechain outliers	177891	3335 (1.86-1.86)
RSRZ outliers	164620	3097 (1.86-1.86)

The table below summarises the geometric issues observed across the polymeric chains and their fit to the electron density. The red, orange, yellow and green segments of the lower bar indicate the fraction of residues that contain outliers for ≥ 3 , 2, 1 and 0 types of geometric quality criteria respectively. A grey segment represents the fraction of residues that are not modelled. The numeric value for each fraction is indicated below the corresponding segment, with a dot representing fractions $\leq 5\%$. The upper red bar (where present) indicates the fraction of residues that have poor fit to the electron density. The numeric value is given above the bar.

Mol	Chain	Length	Quality of chain
1	A	846	
2	B	8	

2 Entry composition [i](#)

There are 10 unique types of molecules in this entry. The entry contains 7166 atoms, of which 0 are hydrogens and 0 are deuteriums.

In the tables below, the ZeroOcc column contains the number of atoms modelled with zero occupancy, the AltConf column contains the number of residues with at least one atom in alternate conformation and the Trace column contains the number of residues modelled with at most 2 atoms.

- Molecule 1 is a protein called Isoform 2 of Ectonucleotide pyrophosphatase/phosphodiesterase family member 2.

Mol	Chain	Residues	Atoms					ZeroOcc	AltConf	Trace
			Total	C	N	O	S			
1	A	806	6603	4200	1134	1218	51	0	16	0

There are 14 discrepancies between the modelled and reference sequences:

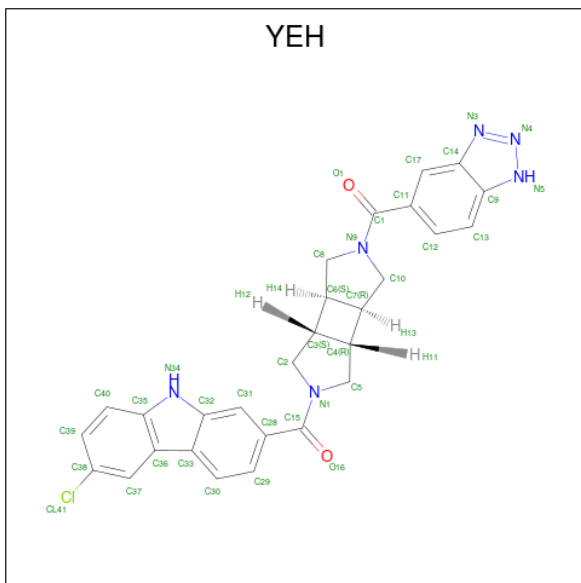
Chain	Residue	Modelled	Actual	Comment	Reference
A	53	ALA	ASN	engineered mutation	UNP Q64610
A	410	ALA	ASN	engineered mutation	UNP Q64610
A	591	THR	ARG	engineered mutation	UNP Q64610
A	863	GLY	-	expression tag	UNP Q64610
A	864	GLY	-	expression tag	UNP Q64610
A	865	ARG	-	expression tag	UNP Q64610
A	866	HIS	-	expression tag	UNP Q64610
A	867	HIS	-	expression tag	UNP Q64610
A	868	HIS	-	expression tag	UNP Q64610
A	869	HIS	-	expression tag	UNP Q64610
A	870	HIS	-	expression tag	UNP Q64610
A	871	HIS	-	expression tag	UNP Q64610
A	872	HIS	-	expression tag	UNP Q64610
A	873	HIS	-	expression tag	UNP Q64610

- Molecule 2 is an oligosaccharide called alpha-D-mannopyranose-(1-2)-alpha-D-mannopyranose-(1-3)-alpha-D-mannopyranose-(1-6)-[alpha-D-mannopyranose-(1-2)-alpha-D-mannopyranose-(1-3)]beta-D-mannopyranose-(1-4)-2-acetamido-2-deoxy-beta-D-glucopyranose-(1-4)-2-acetamido-2-deoxy-beta-D-glucopyranose.



Mol	Chain	Residues	Atoms				ZeroOcc	AltConf	Trace
			Total	C	N	O			
2	B	8	94	52	2	40	0	0	0

- Molecule 3 is [(3aS,3bS,6aS,6bS)-5-(1H-benzotriazole-5-carbonyl)octahydrocyclobuta[1,2-c:3,4-c']dipyrrol-2(1H)-yl](6-chloro-9H-carbazol-2-yl)methanone (three-letter code: YEH) (formula: C₂₈H₂₃ClN₆O₂) (labeled as "Ligand of Interest" by depositor).



Mol	Chain	Residues	Atoms					ZeroOcc	AltConf
			Total	C	Cl	N	O		
3	A	1	26	21	1	3	1	0	0

- Molecule 4 is ZINC ION (three-letter code: ZN) (formula: Zn).

Mol	Chain	Residues	Atoms		ZeroOcc	AltConf
4	A	1	Total	Zn	0	0
			1	1		

- Molecule 5 is SODIUM ION (three-letter code: NA) (formula: Na).

Mol	Chain	Residues	Atoms		ZeroOcc	AltConf
5	A	3	Total	Na	0	0
			3	3		

- Molecule 6 is POTASSIUM ION (three-letter code: K) (formula: K).

Mol	Chain	Residues	Atoms	ZeroOcc	AltConf
6	A	1	Total K 1 1	0	0

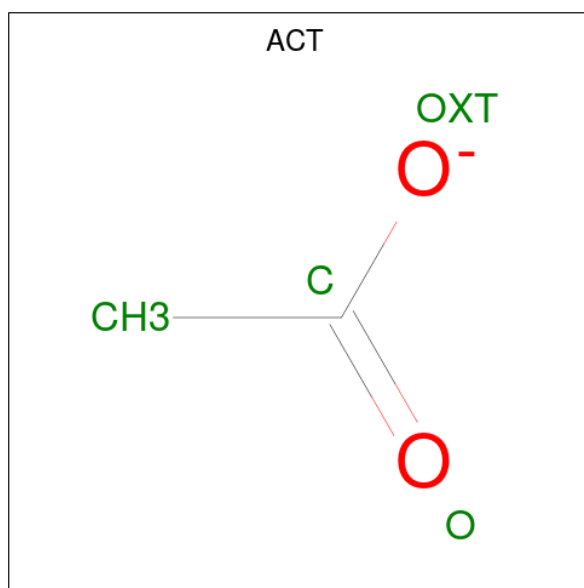
- Molecule 7 is CALCIUM ION (three-letter code: CA) (formula: Ca).

Mol	Chain	Residues	Atoms	ZeroOcc	AltConf
7	A	1	Total Ca 1 1	0	0

- Molecule 8 is CHLORIDE ION (three-letter code: CL) (formula: Cl).

Mol	Chain	Residues	Atoms	ZeroOcc	AltConf
8	A	1	Total Cl 1 1	0	0

- Molecule 9 is ACETATE ION (three-letter code: ACT) (formula: C₂H₃O₂).



Mol	Chain	Residues	Atoms	ZeroOcc	AltConf
9	A	1	Total C O 4 2 2	0	0
9	A	1	Total C O 4 2 2	0	0

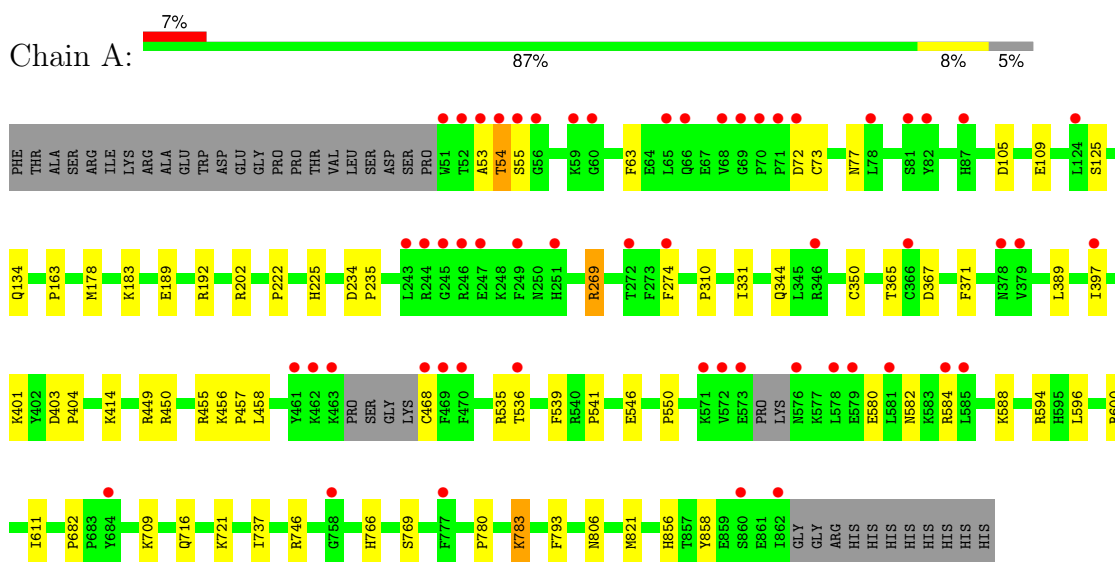
- Molecule 10 is water.

Mol	Chain	Residues	Atoms		ZeroOcc	AltConf
10	A	428	Total 428	O 428	0	0

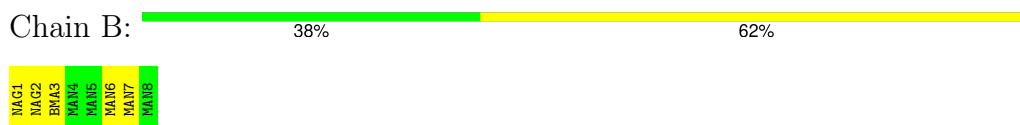
3 Residue-property plots [i](#)

These plots are drawn for all protein, RNA, DNA and oligosaccharide chains in the entry. The first graphic for a chain summarises the proportions of the various outlier classes displayed in the second graphic. The second graphic shows the sequence view annotated by issues in geometry and electron density. Residues are color-coded according to the number of geometric quality criteria for which they contain at least one outlier: green = 0, yellow = 1, orange = 2 and red = 3 or more. A red dot above a residue indicates a poor fit to the electron density ($RSRZ > 2$). Stretches of 2 or more consecutive residues without any outlier are shown as a green connector. Residues present in the sample, but not in the model, are shown in grey.

- Molecule 1: Isoform 2 of Ectonucleotide pyrophosphatase/phosphodiesterase family member 2



- Molecule 2: alpha-D-mannopyranose-(1-2)-alpha-D-mannopyranose-(1-3)-alpha-D-mannopyranose-(1-6)-[alpha-D-mannopyranose-(1-2)-alpha-D-mannopyranose-(1-3)]beta-D-mannopyranose-(1-4)-2-acetamido-2-deoxy-beta-D-glucopyranose-(1-4)-2-acetamido-2-deoxy-beta-D-glucopyranose



4 Data and refinement statistics

Property	Value	Source
Space group	P 21 21 21	Depositor
Cell constants a, b, c, α , β , γ	83.98Å 91.58Å 119.38Å 90.00° 90.00° 90.00°	Depositor
Resolution (Å)	45.79 – 1.85 45.79 – 1.85	Depositor EDS
% Data completeness (in resolution range)	95.1 (45.79-1.85) 95.1 (45.79-1.85)	Depositor EDS
R_{merge}	0.10	Depositor
R_{sym}	(Not available)	Depositor
$\langle I/\sigma(I) \rangle$ ¹	1.25 (at 1.86Å)	Xtrriage
Refinement program	REFMAC 5.7.0029	Depositor
R, R_{free}	0.193 , 0.234 0.193 , 0.234	Depositor DCC
R_{free} test set	4015 reflections (5.09%)	wwPDB-VP
Wilson B-factor (Å ²)	25.8	Xtrriage
Anisotropy	0.225	Xtrriage
Bulk solvent k_{sol} (e/Å ³), B_{sol} (Å ²)	0.34 , 30.6	EDS
L-test for twinning ²	$\langle L \rangle = 0.48$, $\langle L^2 \rangle = 0.31$	Xtrriage
Estimated twinning fraction	No twinning to report.	Xtrriage
F_o, F_c correlation	0.96	EDS
Total number of atoms	7166	wwPDB-VP
Average B, all atoms (Å ²)	34.0	wwPDB-VP

Xtrriage's analysis on translational NCS is as follows: *The largest off-origin peak in the Patterson function is 3.39% of the height of the origin peak. No significant pseudotranslation is detected.*

¹Intensities estimated from amplitudes.

²Theoretical values of $\langle |L| \rangle$, $\langle L^2 \rangle$ for acentric reflections are 0.5, 0.333 respectively for untwinned datasets, and 0.375, 0.2 for perfectly twinned datasets.

5 Model quality [i](#)

5.1 Standard geometry [i](#)

Bond lengths and bond angles in the following residue types are not validated in this section: ACT, ZN, BMA, MAN, K, YEH, CL, NAG, NA, CA

The Z score for a bond length (or angle) is the number of standard deviations the observed value is removed from the expected value. A bond length (or angle) with $|Z| > 5$ is considered an outlier worth inspection. RMSZ is the root-mean-square of all Z scores of the bond lengths (or angles).

Mol	Chain	Bond lengths		Bond angles	
		RMSZ	# Z >5	RMSZ	# Z >5
1	A	0.59	0/6835	0.70	2/9262 (0.0%)

There are no bond length outliers.

All (2) bond angle outliers are listed below:

Mol	Chain	Res	Type	Atoms	Z	Observed(°)	Ideal(°)
1	A	458	LEU	CA-CB-CG	6.08	129.28	115.30
1	A	202	ARG	NE-CZ-NH2	-5.02	117.79	120.30

There are no chirality outliers.

There are no planarity outliers.

5.2 Too-close contacts [i](#)

In the following table, the Non-H and H(model) columns list the number of non-hydrogen atoms and hydrogen atoms in the chain respectively. The H(added) column lists the number of hydrogen atoms added and optimized by MolProbity. The Clashes column lists the number of clashes within the asymmetric unit, whereas Symm-Clashes lists symmetry-related clashes.

Mol	Chain	Non-H	H(model)	H(added)	Clashes	Symm-Clashes
1	A	6603	0	6408	45	0
2	B	94	0	79	0	0
3	A	26	0	0	1	0
4	A	1	0	0	0	0
5	A	3	0	0	0	0
6	A	1	0	0	0	0
7	A	1	0	0	0	0
8	A	1	0	0	0	0
9	A	8	0	6	0	0

Continued on next page...

Continued from previous page...

Mol	Chain	Non-H	H(model)	H(added)	Clashes	Symm-Clashes
10	A	428	0	0	12	0
All	All	7166	0	6493	46	0

The all-atom clashscore is defined as the number of clashes found per 1000 atoms (including hydrogen atoms). The all-atom clashscore for this structure is 4.

All (46) close contacts within the same asymmetric unit are listed below, sorted by their clash magnitude.

Atom-1	Atom-2	Interatomic distance (Å)	Clash overlap (Å)
1:A:793:PHE:HB3	10:A:1333:HOH:O	1.45	1.16
1:A:178:MET:HE2	1:A:192:ARG:HD3	1.43	1.00
1:A:806:ASN:HB2	10:A:1246:HOH:O	1.62	0.99
1:A:793:PHE:CD2	10:A:1333:HOH:O	2.19	0.95
1:A:793:PHE:HD2	10:A:1333:HOH:O	1.51	0.93
1:A:189:GLU:OE1	10:A:1001:HOH:O	2.00	0.79
1:A:183:LYS:HD2	10:A:1171:HOH:O	1.88	0.73
1:A:468:CYS:SG	10:A:1285:HOH:O	2.51	0.68
1:A:178:MET:CE	1:A:192:ARG:HD3	2.23	0.66
1:A:269:ARG:HG2	10:A:1353:HOH:O	1.95	0.65
1:A:584:ARG:O	1:A:588:LYS:HG2	2.00	0.61
1:A:856:HIS:HD2	1:A:858:TYR:CZ	2.19	0.61
1:A:594:ARG:NH2	10:A:1006:HOH:O	2.37	0.56
1:A:821:MET:HA	1:A:821:MET:HE2	1.87	0.56
1:A:856:HIS:HD2	1:A:858:TYR:CE1	2.24	0.55
1:A:54:THR:HA	1:A:73:CYS:HB3	1.88	0.54
1:A:371:PHE:CE1	1:A:457:PRO:HA	2.43	0.54
1:A:580:GLU:HB3	1:A:584:ARG:HH21	1.72	0.53
1:A:746:ARG:NH2	10:A:1002:HOH:O	2.12	0.53
1:A:455:ARG:NH2	1:A:456[A]:LYS:HE2	2.25	0.51
1:A:449:ARG:O	1:A:450[A]:ARG:HB2	2.11	0.50
1:A:365:THR:HB	10:A:1285:HOH:O	2.12	0.49
1:A:682:PRO:HB3	1:A:716:GLN:CD	2.34	0.48
1:A:546:GLU:CD	1:A:600:ARG:HH22	2.18	0.47
1:A:780:PRO:HG2	1:A:783:LYS:HB2	1.97	0.47
1:A:856:HIS:CD2	1:A:858:TYR:CE1	3.03	0.47
1:A:222:PRO:HA	1:A:225:HIS:CE1	2.50	0.47
1:A:310:PRO:HD3	1:A:331:ILE:CD1	2.47	0.44
1:A:709[A]:LYS:HE3	1:A:709[A]:LYS:HB3	1.68	0.44
1:A:806:ASN:CB	10:A:1246:HOH:O	2.39	0.44
1:A:63:PHE:CD1	1:A:77:ASN:HB3	2.53	0.44
1:A:539:PHE:O	1:A:541:PRO:HD3	2.18	0.44

Continued on next page...

Continued from previous page...

Atom-1	Atom-2	Interatomic distance (Å)	Clash overlap (Å)
1:A:596:LEU:HD21	1:A:600:ARG:HB3	2.01	0.43
1:A:53:ALA:C	1:A:55:SER:H	2.22	0.43
1:A:737:ILE:HB	1:A:766:HIS:HB2	2.01	0.43
1:A:550:PRO:HB2	1:A:611:ILE:HG12	1.99	0.43
1:A:535:ARG:HG2	1:A:536:THR:HG23	2.00	0.42
1:A:63:PHE:HD1	1:A:77:ASN:HB3	1.83	0.42
1:A:414:LYS:HA	1:A:414:LYS:HD3	1.81	0.42
1:A:403:ASP:HA	1:A:404:PRO:HD2	1.96	0.41
3:A:901:YEH:C2	3:A:901:YEH:C29	2.97	0.41
1:A:365:THR:OG1	1:A:367:ASP:OD1	2.22	0.41
1:A:163:PRO:HB3	1:A:350:CYS:O	2.21	0.41
1:A:234:ASP:HA	1:A:235:PRO:HD3	1.90	0.41
1:A:769:SER:HB2	1:A:793:PHE:CZ	2.56	0.41
1:A:134[B]:GLN:NE2	1:A:344:GLN:HA	2.36	0.41

There are no symmetry-related clashes.

5.3 Torsion angles [i](#)

5.3.1 Protein backbone [i](#)

In the following table, the Percentiles column shows the percent Ramachandran outliers of the chain as a percentile score with respect to all X-ray entries followed by that with respect to entries of similar resolution.

The Analysed column shows the number of residues for which the backbone conformation was analysed, and the total number of residues.

Mol	Chain	Analysed	Favoured	Allowed	Outliers	Percentiles
1	A	816/846 (96%)	789 (97%)	25 (3%)	2 (0%)	44 32

All (2) Ramachandran outliers are listed below:

Mol	Chain	Res	Type
1	A	109	GLU
1	A	54	THR

5.3.2 Protein sidechains [i](#)

In the following table, the Percentiles column shows the percent sidechain outliers of the chain as a percentile score with respect to all X-ray entries followed by that with respect to entries of similar resolution.

The Analysed column shows the number of residues for which the sidechain conformation was analysed, and the total number of residues.

Mol	Chain	Analysed	Rotameric	Outliers	Percentiles
1	A	745/765 (97%)	734 (98%)	11 (2%)	60 50

All (11) residues with a non-rotameric sidechain are listed below:

Mol	Chain	Res	Type
1	A	72	ASP
1	A	105	ASP
1	A	125	SER
1	A	269	ARG
1	A	274	PHE
1	A	389	LEU
1	A	397	ILE
1	A	401	LYS
1	A	582	ASN
1	A	721	LYS
1	A	783	LYS

Sometimes sidechains can be flipped to improve hydrogen bonding and reduce clashes. All (1) such sidechains are listed below:

Mol	Chain	Res	Type
1	A	436	ASN

5.3.3 RNA [i](#)

There are no RNA molecules in this entry.

5.4 Non-standard residues in protein, DNA, RNA chains [i](#)

There are no non-standard protein/DNA/RNA residues in this entry.

5.5 Carbohydrates i

8 monosaccharides are modelled in this entry.

In the following table, the Counts columns list the number of bonds (or angles) for which Mogul statistics could be retrieved, the number of bonds (or angles) that are observed in the model and the number of bonds (or angles) that are defined in the Chemical Component Dictionary. The Link column lists molecule types, if any, to which the group is linked. The Z score for a bond length (or angle) is the number of standard deviations the observed value is removed from the expected value. A bond length (or angle) with $|Z| > 2$ is considered an outlier worth inspection. RMSZ is the root-mean-square of all Z scores of the bond lengths (or angles).

Mol	Type	Chain	Res	Link	Bond lengths			Bond angles		
					Counts	RMSZ	# Z > 2	Counts	RMSZ	# Z > 2
2	NAG	B	1	2,1	14,14,15	0.60	0	17,19,21	1.58	3 (17%)
2	NAG	B	2	2	14,14,15	0.63	0	17,19,21	1.52	4 (23%)
2	BMA	B	3	2	11,11,12	0.66	0	15,15,17	1.57	2 (13%)
2	MAN	B	4	2	11,11,12	0.66	0	15,15,17	0.94	0
2	MAN	B	5	2	11,11,12	0.67	0	15,15,17	1.03	0
2	MAN	B	6	2	11,11,12	0.64	0	15,15,17	1.22	2 (13%)
2	MAN	B	7	2	11,11,12	0.57	0	15,15,17	0.98	1 (6%)
2	MAN	B	8	2	11,11,12	0.70	0	15,15,17	0.71	0

In the following table, the Chirals column lists the number of chiral outliers, the number of chiral centers analysed, the number of these observed in the model and the number defined in the Chemical Component Dictionary. Similar counts are reported in the Torsion and Rings columns. '-' means no outliers of that kind were identified.

Mol	Type	Chain	Res	Link	Chirals	Torsions	Rings
2	NAG	B	1	2,1	-	0/6/23/26	0/1/1/1
2	NAG	B	2	2	-	0/6/23/26	0/1/1/1
2	BMA	B	3	2	-	0/2/19/22	0/1/1/1
2	MAN	B	4	2	-	0/2/19/22	0/1/1/1
2	MAN	B	5	2	-	2/2/19/22	0/1/1/1
2	MAN	B	6	2	-	0/2/19/22	0/1/1/1
2	MAN	B	7	2	-	1/2/19/22	0/1/1/1
2	MAN	B	8	2	-	2/2/19/22	0/1/1/1

There are no bond length outliers.

All (12) bond angle outliers are listed below:

Mol	Chain	Res	Type	Atoms	Z	Observed(°)	Ideal(°)
2	B	3	BMA	C1-O5-C5	5.08	118.99	112.19

Continued on next page...

Continued from previous page...

Mol	Chain	Res	Type	Atoms	Z	Observed(°)	Ideal(°)
2	B	1	NAG	O5-C1-C2	-4.27	104.69	111.29
2	B	2	NAG	C1-O5-C5	3.24	116.53	112.19
2	B	6	MAN	C1-O5-C5	2.84	115.99	112.19
2	B	2	NAG	C2-N2-C7	2.82	126.67	122.90
2	B	2	NAG	O7-C7-C8	-2.29	117.98	122.05
2	B	7	MAN	O5-C5-C6	2.28	112.09	107.66
2	B	3	BMA	C1-C2-C3	2.26	112.93	109.64
2	B	6	MAN	O2-C2-C1	2.19	114.24	109.22
2	B	1	NAG	O5-C5-C6	2.17	111.89	107.66
2	B	1	NAG	C1-O5-C5	2.03	114.91	112.19
2	B	2	NAG	O5-C1-C2	2.01	114.40	111.29

There are no chirality outliers.

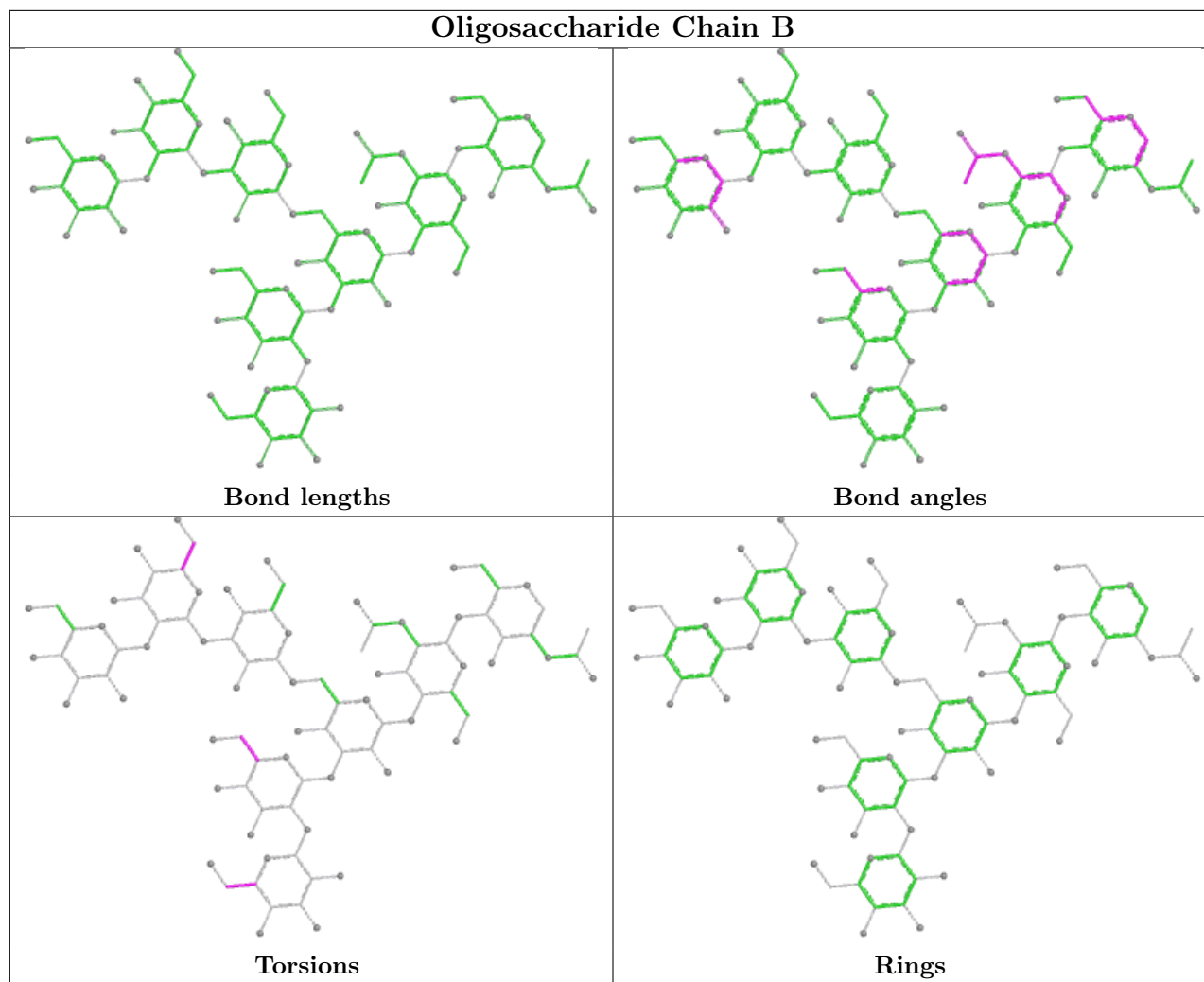
All (5) torsion outliers are listed below:

Mol	Chain	Res	Type	Atoms
2	B	7	MAN	O5-C5-C6-O6
2	B	8	MAN	C4-C5-C6-O6
2	B	5	MAN	C4-C5-C6-O6
2	B	8	MAN	O5-C5-C6-O6
2	B	5	MAN	O5-C5-C6-O6

There are no ring outliers.

No monomer is involved in short contacts.

The following is a two-dimensional graphical depiction of Mogul quality analysis of bond lengths, bond angles, torsion angles, and ring geometry for oligosaccharide.



5.6 Ligand geometry [i](#)

Of 10 ligands modelled in this entry, 7 are monoatomic - leaving 3 for Mogul analysis.

In the following table, the Counts columns list the number of bonds (or angles) for which Mogul statistics could be retrieved, the number of bonds (or angles) that are observed in the model and the number of bonds (or angles) that are defined in the Chemical Component Dictionary. The Link column lists molecule types, if any, to which the group is linked. The Z score for a bond length (or angle) is the number of standard deviations the observed value is removed from the expected value. A bond length (or angle) with $|Z| > 2$ is considered an outlier worth inspection. RMSZ is the root-mean-square of all Z scores of the bond lengths (or angles).

Mol	Type	Chain	Res	Link	Bond lengths			Bond angles		
					Counts	RMSZ	# Z > 2	Counts	RMSZ	# Z > 2
9	ACT	A	909	6	3,3,3	0.98	0	3,3,3	1.02	0
9	ACT	A	910	-	3,3,3	0.73	0	3,3,3	0.85	0
3	YEH	A	901	-	29,31,44	1.60	6 (20%)	38,48,68	1.77	11 (28%)

In the following table, the Chirals column lists the number of chiral outliers, the number of chiral centers analysed, the number of these observed in the model and the number defined in the Chemical Component Dictionary. Similar counts are reported in the Torsion and Rings columns. '-' means no outliers of that kind were identified.

Mol	Type	Chain	Res	Link	Chirals	Torsions	Rings
3	YEH	A	901	-	-	2/8/38/48	0/6/6/8

All (6) bond length outliers are listed below:

Mol	Chain	Res	Type	Atoms	Z	Observed(Å)	Ideal(Å)
3	A	901	YEH	C15-N1	3.64	1.42	1.34
3	A	901	YEH	C2-N1	2.95	1.52	1.46
3	A	901	YEH	C31-C28	2.68	1.42	1.37
3	A	901	YEH	C5-C4	2.61	1.56	1.52
3	A	901	YEH	C39-C38	2.36	1.42	1.38
3	A	901	YEH	C38-CL41	-2.24	1.69	1.74

All (11) bond angle outliers are listed below:

Mol	Chain	Res	Type	Atoms	Z	Observed(°)	Ideal(°)
3	A	901	YEH	C39-C40-C35	-4.00	116.01	120.80
3	A	901	YEH	C38-C37-C36	-3.92	115.22	119.94
3	A	901	YEH	C37-C38-CL41	-3.51	115.43	119.65
3	A	901	YEH	C8-N9-C10	3.07	113.09	105.45
3	A	901	YEH	O16-C15-N1	-3.01	117.62	122.35
3	A	901	YEH	C39-C38-C37	2.83	125.11	122.00
3	A	901	YEH	C31-C28-C15	-2.67	114.52	120.23
3	A	901	YEH	C28-C15-N1	2.53	121.83	118.66
3	A	901	YEH	C29-C30-C33	-2.49	117.79	121.62
3	A	901	YEH	C29-C28-C31	2.37	122.07	119.21
3	A	901	YEH	C30-C33-C32	2.35	121.28	118.17

There are no chirality outliers.

All (2) torsion outliers are listed below:

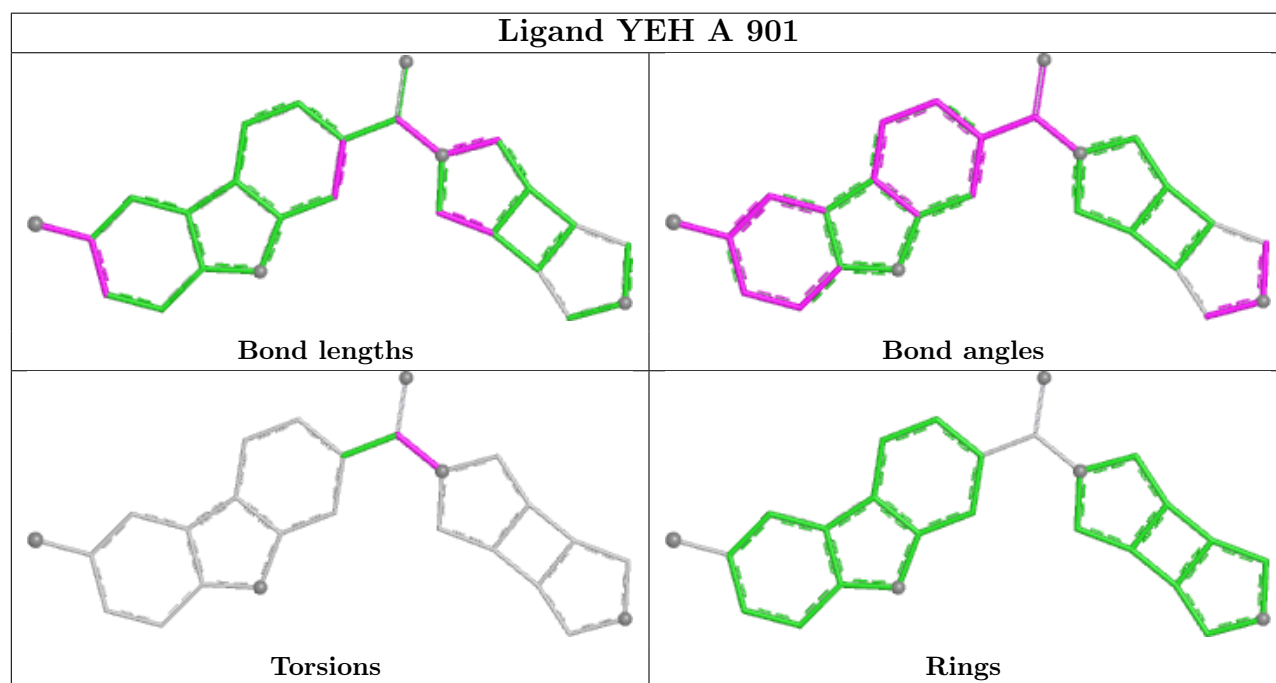
Mol	Chain	Res	Type	Atoms
3	A	901	YEH	C28-C15-N1-C5
3	A	901	YEH	O16-C15-N1-C5

There are no ring outliers.

1 monomer is involved in 1 short contact:

Mol	Chain	Res	Type	Clashes	Symm-Clashes
3	A	901	YEH	1	0

The following is a two-dimensional graphical depiction of Mogul quality analysis of bond lengths, bond angles, torsion angles, and ring geometry for all instances of the Ligand of Interest. In addition, ligands with molecular weight > 250 and outliers as shown on the validation Tables will also be included. For torsion angles, if less than 5% of the Mogul distribution of torsion angles is within 10 degrees of the torsion angle in question, then that torsion angle is considered an outlier. Any bond that is central to one or more torsion angles identified as an outlier by Mogul will be highlighted in the graph. For rings, the root-mean-square deviation (RMSD) between the ring in question and similar rings identified by Mogul is calculated over all ring torsion angles. If the average RMSD is greater than 60 degrees and the minimal RMSD between the ring in question and any Mogul-identified rings is also greater than 60 degrees, then that ring is considered an outlier. The outliers are highlighted in purple. The color gray indicates Mogul did not find sufficient equivalents in the CSD to analyse the geometry.



5.7 Other polymers [i](#)

There are no such residues in this entry.

5.8 Polymer linkage issues [i](#)

There are no chain breaks in this entry.

6 Fit of model and data [i](#)

6.1 Protein, DNA and RNA chains [i](#)

In the following table, the column labelled ‘#RSRZ> 2’ contains the number (and percentage) of RSRZ outliers, followed by percent RSRZ outliers for the chain as percentile scores relative to all X-ray entries and entries of similar resolution. The OWAB column contains the minimum, median, 95th percentile and maximum values of the occupancy-weighted average B-factor per residue. The column labelled ‘Q< 0.9’ lists the number of (and percentage) of residues with an average occupancy less than 0.9.

Mol	Chain	Analysed	<RSRZ>	#RSRZ>2	OWAB(Å ²)	Q<0.9
1	A	806/846 (95%)	0.18	55 (6%) 25 25	14, 29, 67, 80	16 (1%)

All (55) RSRZ outliers are listed below:

Mol	Chain	Res	Type	RSRZ
1	A	71	PRO	6.5
1	A	51	TRP	6.4
1	A	578	LEU	6.4
1	A	468	CYS	5.7
1	A	469	PHE	5.6
1	A	572	VAL	5.3
1	A	70	PRO	5.0
1	A	862	ILE	4.9
1	A	68	VAL	4.7
1	A	378	ASN	4.6
1	A	52	THR	4.1
1	A	53	ALA	4.1
1	A	54	THR	3.9
1	A	581	LEU	3.8
1	A	69	GLY	3.8
1	A	82	TYR	3.7
1	A	243	LEU	3.7
1	A	573	GLU	3.6
1	A	247	GLU	3.6
1	A	274	PHE	3.5
1	A	461[A]	TYR	3.5
1	A	249	PHE	3.4
1	A	463	LYS	3.4
1	A	55	SER	3.0
1	A	366	CYS	2.9
1	A	462	LYS	2.9
1	A	78	LEU	2.8

Continued on next page...

Continued from previous page...

Mol	Chain	Res	Type	RSRZ
1	A	72	ASP	2.7
1	A	585	LEU	2.7
1	A	272	THR	2.6
1	A	56	GLY	2.6
1	A	87	HIS	2.6
1	A	571	LYS	2.6
1	A	470	PHE	2.5
1	A	379	VAL	2.5
1	A	579	GLU	2.4
1	A	59	LYS	2.4
1	A	684	TYR	2.4
1	A	60	GLY	2.4
1	A	246	ARG	2.4
1	A	81	SER	2.4
1	A	251	HIS	2.3
1	A	576	ASN	2.3
1	A	66	GLN	2.2
1	A	244	ARG	2.2
1	A	860	SER	2.2
1	A	65	LEU	2.2
1	A	245	GLY	2.2
1	A	584	ARG	2.2
1	A	397	ILE	2.2
1	A	777	PHE	2.1
1	A	536	THR	2.1
1	A	124	LEU	2.1
1	A	758	GLY	2.0
1	A	346	ARG	2.0

6.2 Non-standard residues in protein, DNA, RNA chains [i](#)

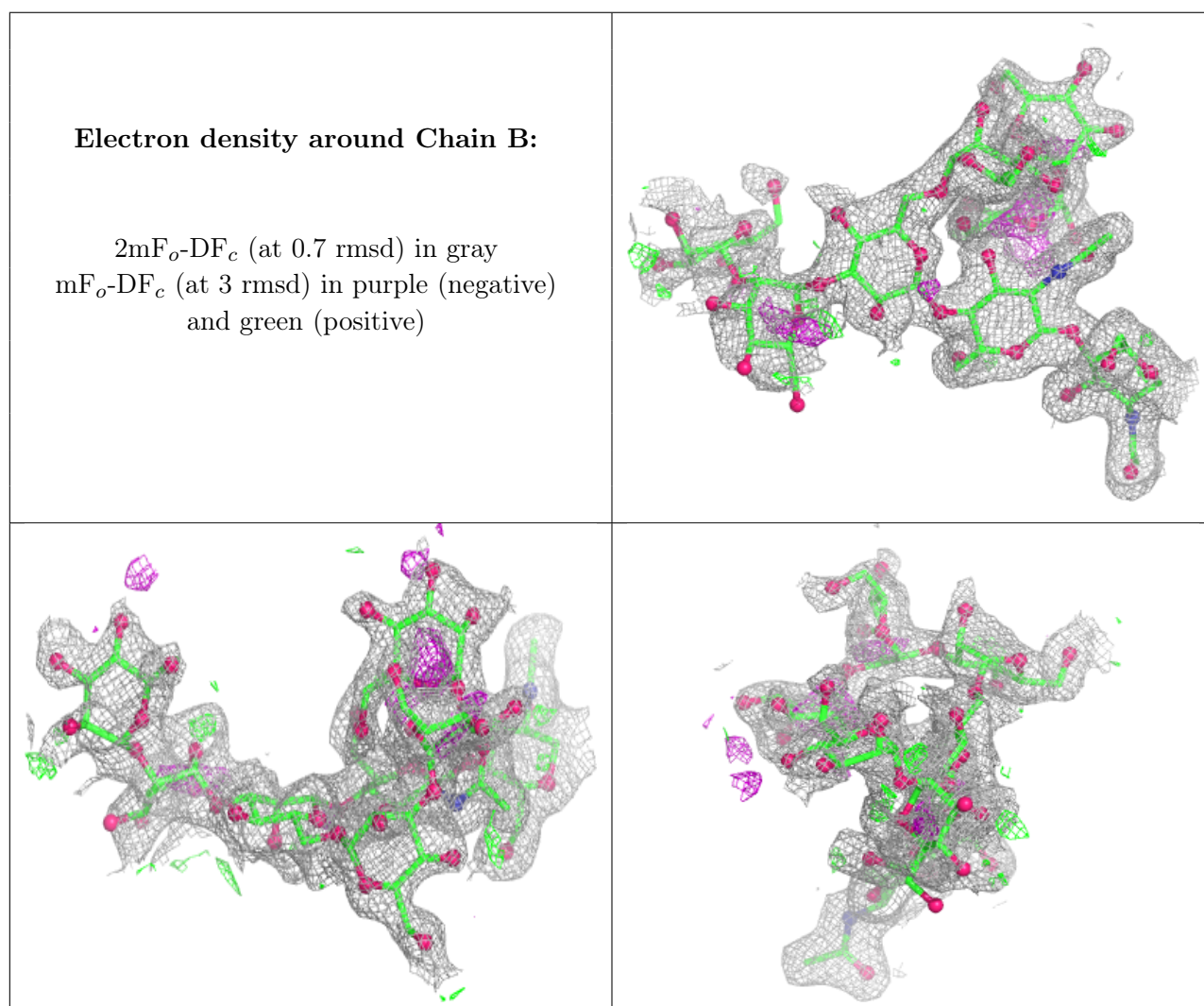
There are no non-standard protein/DNA/RNA residues in this entry.

6.3 Carbohydrates [i](#)

In the following table, the Atoms column lists the number of modelled atoms in the group and the number defined in the chemical component dictionary. The B-factors column lists the minimum, median, 95th percentile and maximum values of B factors of atoms in the group. The column labelled 'Q< 0.9' lists the number of atoms with occupancy less than 0.9.

Mol	Type	Chain	Res	Atoms	RSCC	RSR	B-factors(\AA^2)	Q<0.9
2	MAN	B	7	11/12	0.49	0.17	73,80,80,80	0
2	MAN	B	8	11/12	0.64	0.15	62,70,75,75	0
2	BMA	B	3	11/12	0.66	0.14	59,65,71,73	0
2	MAN	B	6	11/12	0.78	0.18	40,55,58,61	0
2	MAN	B	5	11/12	0.79	0.14	58,60,63,64	0
2	MAN	B	4	11/12	0.81	0.11	57,62,65,65	0
2	NAG	B	2	14/15	0.89	0.10	30,34,42,54	0
2	NAG	B	1	14/15	0.96	0.06	20,21,23,25	0

The following is a graphical depiction of the model fit to experimental electron density for oligosaccharide. Each fit is shown from different orientation to approximate a three-dimensional view.



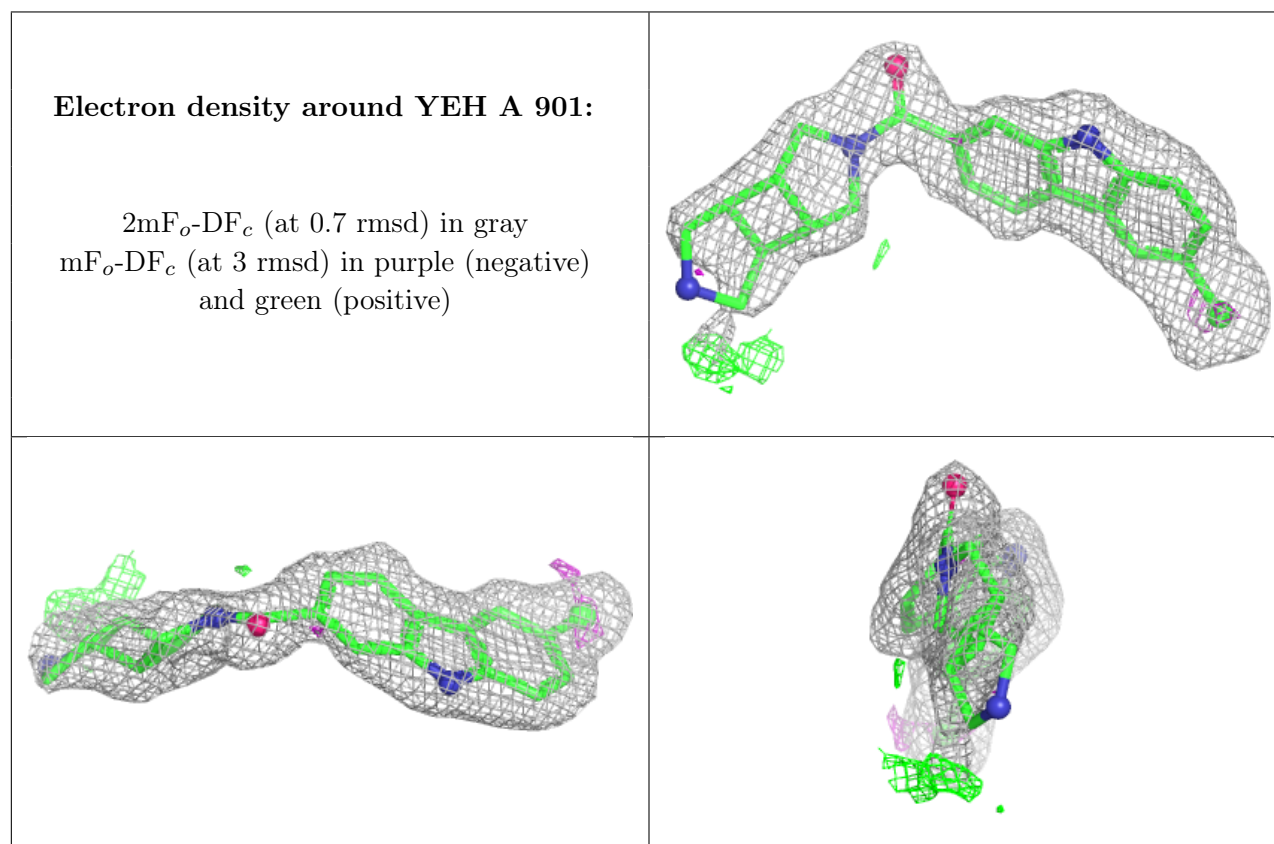
6.4 Ligands [i](#)

In the following table, the Atoms column lists the number of modelled atoms in the group and the number defined in the chemical component dictionary. The B-factors column lists the minimum,

median, 95th percentile and maximum values of B factors of atoms in the group. The column labelled 'Q< 0.9' lists the number of atoms with occupancy less than 0.9.

Mol	Type	Chain	Res	Atoms	RSCC	RSR	B-factors(Å ²)	Q<0.9
3	YEH	A	901	26/37	0.88	0.13	31,43,53,59	0
9	ACT	A	909	4/4	0.89	0.18	32,32,34,34	0
5	NA	A	904	1/1	0.91	0.08	40,40,40,40	0
9	ACT	A	910	4/4	0.93	0.09	26,27,30,30	0
5	NA	A	905	1/1	0.95	0.07	46,46,46,46	0
5	NA	A	903	1/1	0.96	0.05	31,31,31,31	0
6	K	A	906	1/1	0.97	0.06	30,30,30,30	0
8	CL	A	908	1/1	0.97	0.06	44,44,44,44	0
7	CA	A	907	1/1	0.99	0.02	21,21,21,21	0
4	ZN	A	902	1/1	0.99	0.03	26,26,26,26	0

The following is a graphical depiction of the model fit to experimental electron density of all instances of the Ligand of Interest. In addition, ligands with molecular weight > 250 and outliers as shown on the geometry validation Tables will also be included. Each fit is shown from different orientation to approximate a three-dimensional view.



6.5 Other polymers [\(i\)](#)

There are no such residues in this entry.