



Full wwPDB X-ray Structure Validation Report ⓘ

Dec 12, 2024 – 06:45 PM EST

PDB ID : 7G53
Title : Crystal Structure of rat Autotaxin in complex with 1H-benzotriazol-5-yl-[rac-(1R,2S,6R,7S)-9-[4-(2-methoxyethoxy)quinoline-2-carbonyl]-4,9-diazatricyclo[5.3.0.0^{2,6}]decan-4-yl]methanone, i.e. SMILES N1(C[C@H]2[C@@H](C1)[C@H]1[C@@H]2CN(C1)C(=O)c1ccc2c(c1)N=NN2)C(=O)c1nc2c(c(c1)OCCOC)cccc2 with IC₅₀=0.223388 microM
Authors : Stihle, M.; Benz, J.; Hunziker, D.; Mattei, P.; Rudolph, M.G.
Deposited on : 2023-06-05
Resolution : 1.73 Å(reported)

This is a Full wwPDB X-ray Structure Validation Report for a publicly released PDB entry.

We welcome your comments at validation@mail.wwpdb.org

A user guide is available at

<https://www.wwpdb.org/validation/2017/XrayValidationReportHelp>

with specific help available everywhere you see the ⓘ symbol.

The types of validation reports are described at

<http://www.wwpdb.org/validation/2017/FAQs#types>.

The following versions of software and data (see [references ⓘ](#)) were used in the production of this report:

MolProbity : 4.02b-467
Mogul : 2022.3.0, CSD as543be (2022)
Xtriage (Phenix) : 1.21
EDS : 3.0
buster-report : 1.1.7 (2018)
Percentile statistics : 20231227.v01 (using entries in the PDB archive December 27th 2023)
CCP4 : 9.0.004 (Gargrove)
Density-Fitness : 1.0.11
Ideal geometry (proteins) : Engh & Huber (2001)

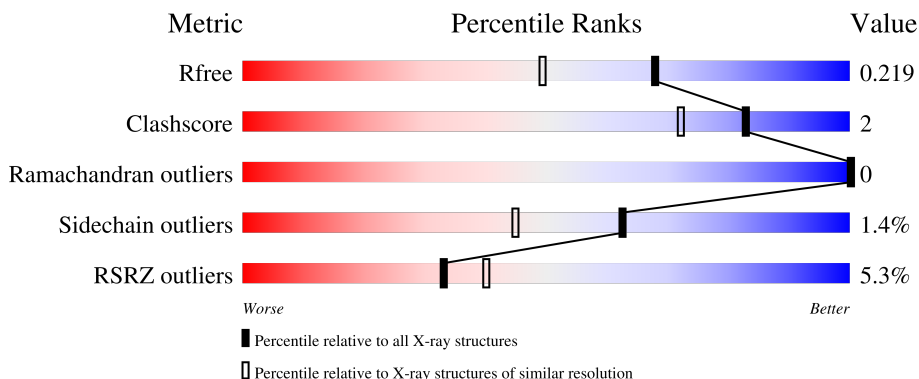
1 Overall quality at a glance

The following experimental techniques were used to determine the structure:

X-RAY DIFFRACTION


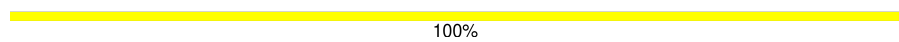
The reported resolution of this entry is 1.73 Å.

Percentile scores (ranging between 0-100) for global validation metrics of the entry are shown in the following graphic. The table shows the number of entries on which the scores are based.



Metric	Whole archive (#Entries)	Similar resolution (#Entries, resolution range(Å))
R_{free}	164625	1043 (1.74-1.74)
Clashscore	180529	1119 (1.74-1.74)
Ramachandran outliers	177936	1112 (1.74-1.74)
Sidechain outliers	177891	1112 (1.74-1.74)
RSRZ outliers	164620	1043 (1.74-1.74)

The table below summarises the geometric issues observed across the polymeric chains and their fit to the electron density. The red, orange, yellow and green segments of the lower bar indicate the fraction of residues that contain outliers for ≥ 3 , 2, 1 and 0 types of geometric quality criteria respectively. A grey segment represents the fraction of residues that are not modelled. The numeric value for each fraction is indicated below the corresponding segment, with a dot representing fractions $\leq 5\%$. The upper red bar (where present) indicates the fraction of residues that have poor fit to the electron density. The numeric value is given above the bar.

Mol	Chain	Length	Quality of chain
1	A	846	 5% 88% 7% 5%
2	B	8	 100%

Ideal geometry (DNA, RNA) : Parkinson et al. (1996)
 Validation Pipeline (wwPDB-VP) : 2.40

2 Entry composition i

There are 10 unique types of molecules in this entry. The entry contains 7306 atoms, of which 0 are hydrogens and 0 are deuteriums.

In the tables below, the ZeroOcc column contains the number of atoms modelled with zero occupancy, the AltConf column contains the number of residues with at least one atom in alternate conformation and the Trace column contains the number of residues modelled with at most 2 atoms.

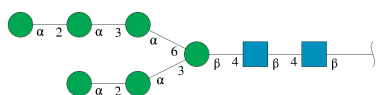
- Molecule 1 is a protein called Isoform 2 of Ectonucleotide pyrophosphatase/phosphodiesterase family member 2.

Mol	Chain	Residues	Atoms					ZeroOcc	AltConf	Trace
			Total	C	N	O	S			
1	A	806	6602	4197	1131	1221	53	0	18	0

There are 14 discrepancies between the modelled and reference sequences:

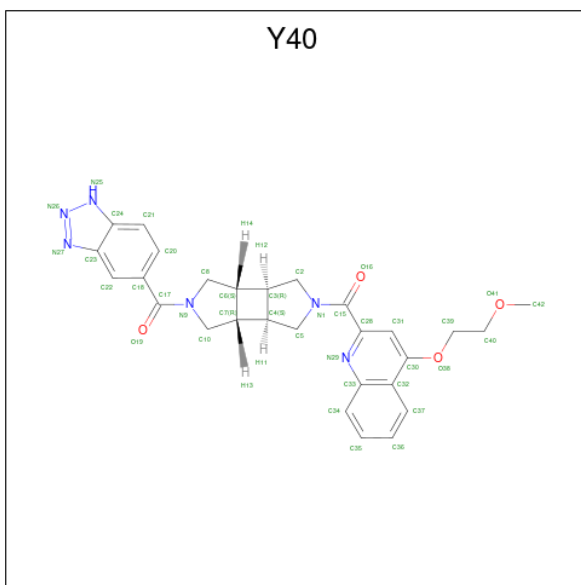
Chain	Residue	Modelled	Actual	Comment	Reference
A	53	ALA	ASN	engineered mutation	UNP Q64610
A	410	ALA	ASN	engineered mutation	UNP Q64610
A	591	THR	ARG	engineered mutation	UNP Q64610
A	863	GLY	-	expression tag	UNP Q64610
A	864	GLY	-	expression tag	UNP Q64610
A	865	ARG	-	expression tag	UNP Q64610
A	866	HIS	-	expression tag	UNP Q64610
A	867	HIS	-	expression tag	UNP Q64610
A	868	HIS	-	expression tag	UNP Q64610
A	869	HIS	-	expression tag	UNP Q64610
A	870	HIS	-	expression tag	UNP Q64610
A	871	HIS	-	expression tag	UNP Q64610
A	872	HIS	-	expression tag	UNP Q64610
A	873	HIS	-	expression tag	UNP Q64610

- Molecule 2 is an oligosaccharide called alpha-D-mannopyranose-(1-2)-alpha-D-mannopyranose-(1-3)-alpha-D-mannopyranose-(1-6)-[alpha-D-mannopyranose-(1-2)-alpha-D-mannopyranose-(1-3)]beta-D-mannopyranose-(1-4)-2-acetamido-2-deoxy-beta-D-glucopyranose-(1-4)-2-acetamido-2-deoxy-beta-D-glucopyranose.



Mol	Chain	Residues	Atoms				ZeroOcc	AltConf	Trace
			Total	C	N	O			
2	B	8	94	52	2	40	0	0	0

- Molecule 3 is [(3aR,3bR,6aS,6bS)-5-(1H-benzotriazole-5-carbonyl)octahydrocyclobuta[1,2-c:3,4-c']dipyrrol-2(1H)-yl][4-(2-methoxyethoxy)quinolin-2-yl]methanone (three-letter code: Y40) (formula: C₂₈H₂₈N₆O₄) (labeled as "Ligand of Interest" by depositor).



Mol	Chain	Residues	Atoms				ZeroOcc	AltConf
			Total	C	N	O		
3	A	1	38	28	6	4	0	0

- Molecule 4 is ZINC ION (three-letter code: ZN) (formula: Zn).

Mol	Chain	Residues	Atoms		ZeroOcc	AltConf
			Total	Zn		
4	A	1	1	1	0	0

- Molecule 5 is SODIUM ION (three-letter code: NA) (formula: Na).

Mol	Chain	Residues	Atoms		ZeroOcc	AltConf
			Total	Na		
5	A	1	1	1	0	0

- Molecule 6 is CALCIUM ION (three-letter code: CA) (formula: Ca).

Mol	Chain	Residues	Atoms	ZeroOcc	AltConf
6	A	1	Total Ca 1 1	0	0

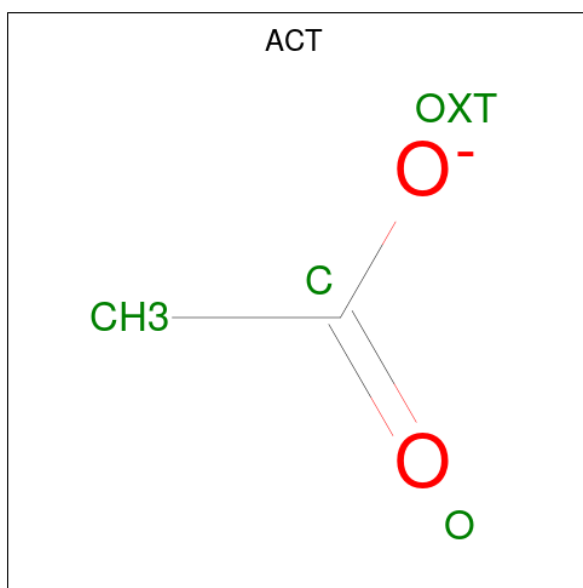
- Molecule 7 is POTASSIUM ION (three-letter code: K) (formula: K).

Mol	Chain	Residues	Atoms	ZeroOcc	AltConf
7	A	1	Total K 1 1	0	0

- Molecule 8 is CHLORIDE ION (three-letter code: CL) (formula: Cl).

Mol	Chain	Residues	Atoms	ZeroOcc	AltConf
8	A	1	Total Cl 1 1	0	0

- Molecule 9 is ACETATE ION (three-letter code: ACT) (formula: C₂H₃O₂).



Mol	Chain	Residues	Atoms	ZeroOcc	AltConf
9	A	1	Total C O 4 2 2	0	0

- Molecule 10 is water.

Mol	Chain	Residues	Atoms	ZeroOcc	AltConf
10	A	563	Total O 563 563	0	0

4 Data and refinement statistics

Property	Value	Source
Space group	P 21 21 21	Depositor
Cell constants a, b, c, α , β , γ	84.10Å 91.98Å 119.70Å 90.00° 90.00° 90.00°	Depositor
Resolution (Å)	45.99 – 1.73 45.99 – 1.73	Depositor EDS
% Data completeness (in resolution range)	96.5 (45.99-1.73) 96.5 (45.99-1.73)	Depositor EDS
R_{merge}	0.10	Depositor
R_{sym}	(Not available)	Depositor
$\langle I/\sigma(I) \rangle$ ¹	1.24 (at 1.73Å)	Xtrriage
Refinement program	REFMAC 5.7.0029	Depositor
R, R_{free}	0.184 , 0.220 0.183 , 0.219	Depositor DCC
R_{free} test set	4948 reflections (5.10%)	wwPDB-VP
Wilson B-factor (Å ²)	20.2	Xtrriage
Anisotropy	0.104	Xtrriage
Bulk solvent k_{sol} (e/Å ³), B_{sol} (Å ²)	0.31 , 25.6	EDS
L-test for twinning ²	$\langle L \rangle = 0.48$, $\langle L^2 \rangle = 0.32$	Xtrriage
Estimated twinning fraction	No twinning to report.	Xtrriage
F_o, F_c correlation	0.96	EDS
Total number of atoms	7306	wwPDB-VP
Average B, all atoms (Å ²)	26.0	wwPDB-VP

Xtrriage's analysis on translational NCS is as follows: *The largest off-origin peak in the Patterson function is 3.44% of the height of the origin peak. No significant pseudotranslation is detected.*

¹Intensities estimated from amplitudes.

²Theoretical values of $\langle |L| \rangle$, $\langle L^2 \rangle$ for acentric reflections are 0.5, 0.333 respectively for untwinned datasets, and 0.375, 0.2 for perfectly twinned datasets.

5 Model quality [i](#)

5.1 Standard geometry [i](#)

Bond lengths and bond angles in the following residue types are not validated in this section: ACT, BMA, NA, ZN, CL, Y40, CA, MAN, NAG, K

The Z score for a bond length (or angle) is the number of standard deviations the observed value is removed from the expected value. A bond length (or angle) with $|Z| > 5$ is considered an outlier worth inspection. RMSZ is the root-mean-square of all Z scores of the bond lengths (or angles).

Mol	Chain	Bond lengths		Bond angles	
		RMSZ	# Z >5	RMSZ	# Z >5
1	A	0.81	0/6839	0.85	10/9269 (0.1%)

There are no bond length outliers.

All (10) bond angle outliers are listed below:

Mol	Chain	Res	Type	Atoms	Z	Observed(°)	Ideal(°)
1	A	393	ARG	NE-CZ-NH1	6.79	123.70	120.30
1	A	827	ARG	CG-CD-NE	-6.07	99.06	111.80
1	A	393	ARG	NE-CZ-NH2	-5.94	117.33	120.30
1	A	391	ARG	NE-CZ-NH1	5.81	123.21	120.30
1	A	391	ARG	NE-CZ-NH2	-5.36	117.62	120.30
1	A	438	ARG	NE-CZ-NH1	5.31	122.95	120.30
1	A	535	ARG	NE-CZ-NH2	-5.12	117.74	120.30
1	A	458	LEU	CA-CB-CG	5.06	126.94	115.30
1	A	479[A]	LYS	CD-CE-NZ	-5.05	100.09	111.70
1	A	479[B]	LYS	CD-CE-NZ	-5.05	100.09	111.70

There are no chirality outliers.

There are no planarity outliers.

5.2 Too-close contacts [i](#)

In the following table, the Non-H and H(model) columns list the number of non-hydrogen atoms and hydrogen atoms in the chain respectively. The H(added) column lists the number of hydrogen atoms added and optimized by MolProbity. The Clashes column lists the number of clashes within the asymmetric unit, whereas Symm-Clashes lists symmetry-related clashes.

Mol	Chain	Non-H	H(model)	H(added)	Clashes	Symm-Clashes
1	A	6602	0	6406	30	0

Continued on next page...

Continued from previous page...

Mol	Chain	Non-H	H(model)	H(added)	Clashes	Symm-Clashes
2	B	94	0	79	0	0
3	A	38	0	0	0	0
4	A	1	0	0	0	0
5	A	1	0	0	0	0
6	A	1	0	0	0	0
7	A	1	0	0	0	0
8	A	1	0	0	0	0
9	A	4	0	3	0	0
10	A	563	0	0	2	0
All	All	7306	0	6488	30	0

The all-atom clashscore is defined as the number of clashes found per 1000 atoms (including hydrogen atoms). The all-atom clashscore for this structure is 2.

All (30) close contacts within the same asymmetric unit are listed below, sorted by their clash magnitude.

Atom-1	Atom-2	Interatomic distance (Å)	Clash overlap (Å)
1:A:450[A]:ARG:NH1	10:A:1001:HOH:O	2.13	0.78
1:A:461[A]:TYR:CD1	1:A:462:LYS:HG2	2.34	0.62
1:A:856:HIS:HD2	1:A:858:TYR:CZ	2.20	0.59
1:A:596:LEU:HD21	1:A:600:ARG:HB3	1.85	0.58
1:A:856:HIS:HD2	1:A:858:TYR:CE1	2.23	0.56
1:A:594:ARG:NH2	10:A:1005:HOH:O	2.39	0.55
1:A:222:PRO:HA	1:A:225:HIS:CE1	2.41	0.55
1:A:371:PHE:CE1	1:A:457:PRO:HA	2.44	0.53
1:A:163:PRO:HB3	1:A:350:CYS:O	2.09	0.53
1:A:856:HIS:CD2	1:A:858:TYR:CE1	2.97	0.52
1:A:539:PHE:O	1:A:541:PRO:HD3	2.10	0.51
1:A:77:ASN:ND2	1:A:272:THR:OG1	2.43	0.51
1:A:550:PRO:HB2	1:A:611:ILE:HG12	1.94	0.50
1:A:148[B]:CYS:SG	1:A:496:TYR:HE1	2.35	0.50
1:A:189[B]:GLU:OE1	1:A:192:ARG:NE	2.42	0.48
1:A:205:TYR:CD1	1:A:206:PRO:HA	2.51	0.44
1:A:184:VAL:HB	1:A:329:ARG:HG2	2.00	0.43
1:A:134[B]:GLN:NE2	1:A:344:GLN:HA	2.33	0.43
1:A:414:LYS:HD3	1:A:414:LYS:HA	1.74	0.42
1:A:856:HIS:CD2	1:A:858:TYR:CZ	3.06	0.42
1:A:206:PRO:HD3	1:A:434:TYR:CE1	2.54	0.42
1:A:148[A]:CYS:SG	1:A:497:ARG:NH2	2.93	0.41
1:A:589:GLY:O	1:A:592:LYS:HG2	2.20	0.41
1:A:185:MET:O	1:A:189[A]:GLU:HG2	2.20	0.41

Continued on next page...

Continued from previous page...

Atom-1	Atom-2	Interatomic distance (Å)	Clash overlap (Å)
1:A:379:VAL:HG22	1:A:455:ARG:HG2	2.03	0.41
1:A:580:GLU:HB3	1:A:584:ARG:HH21	1.86	0.40
1:A:681:PHE:CD1	1:A:682:PRO:HD2	2.56	0.40
1:A:210:PHE:HB3	1:A:227:ILE:HG21	2.03	0.40
1:A:54:THR:HA	1:A:73:CYS:HB3	2.03	0.40
1:A:508:LEU:HD23	1:A:508:LEU:HA	1.85	0.40

There are no symmetry-related clashes.

5.3 Torsion angles [i](#)

5.3.1 Protein backbone [i](#)

In the following table, the Percentiles column shows the percent Ramachandran outliers of the chain as a percentile score with respect to all X-ray entries followed by that with respect to entries of similar resolution.

The Analysed column shows the number of residues for which the backbone conformation was analysed, and the total number of residues.

Mol	Chain	Analysed	Favoured	Allowed	Outliers	Percentiles
1	A	818/846 (97%)	792 (97%)	26 (3%)	0	100 100

There are no Ramachandran outliers to report.

5.3.2 Protein sidechains [i](#)

In the following table, the Percentiles column shows the percent sidechain outliers of the chain as a percentile score with respect to all X-ray entries followed by that with respect to entries of similar resolution.

The Analysed column shows the number of residues for which the sidechain conformation was analysed, and the total number of residues.

Mol	Chain	Analysed	Rotameric	Outliers	Percentiles
1	A	747/765 (98%)	737 (99%)	10 (1%)	65 48

All (10) residues with a non-rotameric sidechain are listed below:

Mol	Chain	Res	Type
1	A	72	ASP
1	A	83	SER
1	A	209	THR
1	A	297	ASN
1	A	379	VAL
1	A	389	LEU
1	A	401	LYS
1	A	582	ASN
1	A	725	SER
1	A	862	ILE

Sometimes sidechains can be flipped to improve hydrogen bonding and reduce clashes. All (3) such sidechains are listed below:

Mol	Chain	Res	Type
1	A	436	ASN
1	A	647	HIS
1	A	856	HIS

5.3.3 RNA [i](#)

There are no RNA molecules in this entry.

5.4 Non-standard residues in protein, DNA, RNA chains [i](#)

There are no non-standard protein/DNA/RNA residues in this entry.

5.5 Carbohydrates [i](#)

8 monosaccharides are modelled in this entry.

In the following table, the Counts columns list the number of bonds (or angles) for which Mogul statistics could be retrieved, the number of bonds (or angles) that are observed in the model and the number of bonds (or angles) that are defined in the Chemical Component Dictionary. The Link column lists molecule types, if any, to which the group is linked. The Z score for a bond length (or angle) is the number of standard deviations the observed value is removed from the expected value. A bond length (or angle) with $|Z| > 2$ is considered an outlier worth inspection. RMSZ is the root-mean-square of all Z scores of the bond lengths (or angles).

Mol	Type	Chain	Res	Link	Bond lengths			Bond angles		
					Counts	RMSZ	$\# Z > 2$	Counts	RMSZ	$\# Z > 2$
2	NAG	B	1	2,1	14,14,15	0.63	0	17,19,21	1.57	2 (11%)

Mol	Type	Chain	Res	Link	Bond lengths			Bond angles		
					Counts	RMSZ	# Z > 2	Counts	RMSZ	# Z > 2
2	NAG	B	2	2	14,14,15	1.05	0	17,19,21	2.22	5 (29%)
2	BMA	B	3	2	11,11,12	0.89	1 (9%)	15,15,17	1.50	4 (26%)
2	MAN	B	4	2	11,11,12	0.77	0	15,15,17	1.46	3 (20%)
2	MAN	B	5	2	11,11,12	0.75	0	15,15,17	1.78	4 (26%)
2	MAN	B	6	2	11,11,12	0.74	0	15,15,17	0.83	1 (6%)
2	MAN	B	7	2	11,11,12	0.68	0	15,15,17	1.17	1 (6%)
2	MAN	B	8	2	11,11,12	0.86	1 (9%)	15,15,17	1.20	1 (6%)

In the following table, the Chirals column lists the number of chiral outliers, the number of chiral centers analysed, the number of these observed in the model and the number defined in the Chemical Component Dictionary. Similar counts are reported in the Torsion and Rings columns. '-' means no outliers of that kind were identified.

Mol	Type	Chain	Res	Link	Chirals	Torsions	Rings
2	NAG	B	1	2,1	-	0/6/23/26	0/1/1/1
2	NAG	B	2	2	-	0/6/23/26	0/1/1/1
2	BMA	B	3	2	-	0/2/19/22	0/1/1/1
2	MAN	B	4	2	-	0/2/19/22	0/1/1/1
2	MAN	B	5	2	-	2/2/19/22	0/1/1/1
2	MAN	B	6	2	-	0/2/19/22	0/1/1/1
2	MAN	B	7	2	-	2/2/19/22	0/1/1/1
2	MAN	B	8	2	-	2/2/19/22	0/1/1/1

All (2) bond length outliers are listed below:

Mol	Chain	Res	Type	Atoms	Z	Observed(Å)	Ideal(Å)
2	B	3	BMA	C2-C3	2.29	1.56	1.52
2	B	8	MAN	C2-C3	2.04	1.55	1.52

All (21) bond angle outliers are listed below:

Mol	Chain	Res	Type	Atoms	Z	Observed(°)	Ideal(°)
2	B	2	NAG	C1-O5-C5	6.42	120.79	112.19
2	B	1	NAG	O5-C1-C2	-4.56	104.24	111.29
2	B	5	MAN	C1-O5-C5	4.09	117.66	112.19
2	B	8	MAN	O3-C3-C2	3.23	116.65	110.05
2	B	4	MAN	C1-O5-C5	3.17	116.44	112.19
2	B	2	NAG	O7-C7-C8	-3.17	116.42	122.05
2	B	2	NAG	C8-C7-N2	3.15	121.35	116.12
2	B	3	BMA	C1-O5-C5	3.04	116.26	112.19

Continued on next page...

Continued from previous page...

Mol	Chain	Res	Type	Atoms	Z	Observed(°)	Ideal(°)
2	B	2	NAG	C3-C4-C5	3.00	115.67	110.23
2	B	3	BMA	C1-C2-C3	2.99	114.00	109.64
2	B	5	MAN	C3-C4-C5	2.60	114.95	110.23
2	B	4	MAN	O5-C5-C6	2.54	112.62	107.66
2	B	6	MAN	O5-C5-C6	2.44	112.41	107.66
2	B	3	BMA	O6-C6-C5	-2.34	103.36	111.33
2	B	1	NAG	O7-C7-C8	-2.29	117.98	122.05
2	B	5	MAN	O6-C6-C5	-2.19	103.88	111.33
2	B	7	MAN	O5-C1-C2	-2.08	105.82	110.79
2	B	4	MAN	O3-C3-C2	2.07	114.28	110.05
2	B	3	BMA	O2-C2-C1	-2.02	104.60	109.22
2	B	5	MAN	O5-C5-C4	2.01	115.73	110.83
2	B	2	NAG	C2-N2-C7	2.01	125.59	122.90

There are no chirality outliers.

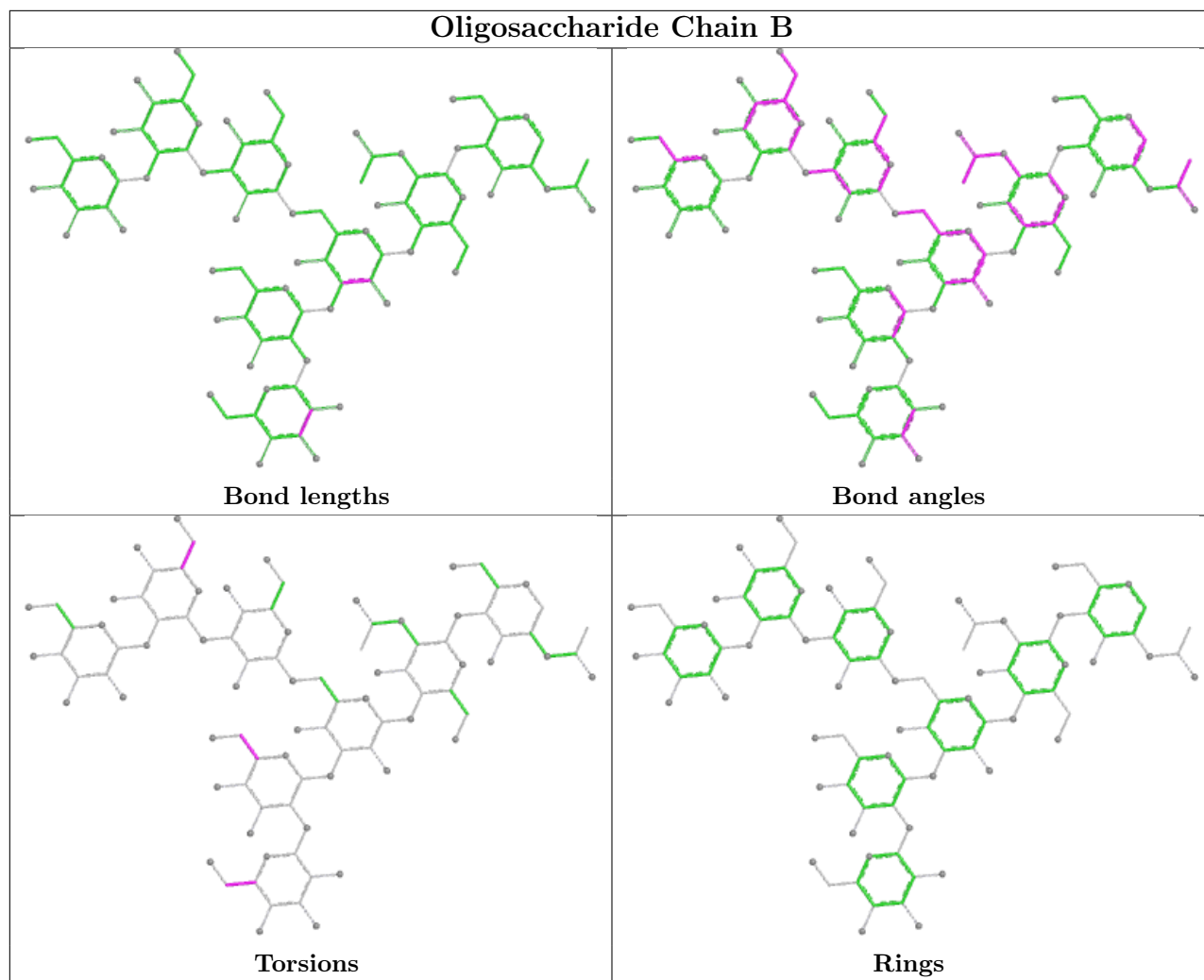
All (6) torsion outliers are listed below:

Mol	Chain	Res	Type	Atoms
2	B	7	MAN	O5-C5-C6-O6
2	B	7	MAN	C4-C5-C6-O6
2	B	5	MAN	C4-C5-C6-O6
2	B	8	MAN	C4-C5-C6-O6
2	B	5	MAN	O5-C5-C6-O6
2	B	8	MAN	O5-C5-C6-O6

There are no ring outliers.

No monomer is involved in short contacts.

The following is a two-dimensional graphical depiction of Mogul quality analysis of bond lengths, bond angles, torsion angles, and ring geometry for oligosaccharide.



5.6 Ligand geometry [i](#)

Of 7 ligands modelled in this entry, 5 are monoatomic - leaving 2 for Mogul analysis.

In the following table, the Counts columns list the number of bonds (or angles) for which Mogul statistics could be retrieved, the number of bonds (or angles) that are observed in the model and the number of bonds (or angles) that are defined in the Chemical Component Dictionary. The Link column lists molecule types, if any, to which the group is linked. The Z score for a bond length (or angle) is the number of standard deviations the observed value is removed from the expected value. A bond length (or angle) with $|Z| > 2$ is considered an outlier worth inspection. RMSZ is the root-mean-square of all Z scores of the bond lengths (or angles).

Mol	Type	Chain	Res	Link	Bond lengths			Bond angles		
					Counts	RMSZ	# $ Z > 2$	Counts	RMSZ	# $ Z > 2$
3	Y40	A	901	4	40,44,44	0.98	2 (5%)	51,65,65	1.63	11 (21%)
9	ACT	A	907	-	3,3,3	1.09	0	3,3,3	0.52	0

In the following table, the Chirals column lists the number of chiral outliers, the number of chiral

centers analysed, the number of these observed in the model and the number defined in the Chemical Component Dictionary. Similar counts are reported in the Torsion and Rings columns. '-' means no outliers of that kind were identified.

Mol	Type	Chain	Res	Link	Chirals	Torsions	Rings
3	Y40	A	901	4	-	1/21/53/53	0/7/7/7

All (2) bond length outliers are listed below:

Mol	Chain	Res	Type	Atoms	Z	Observed(Å)	Ideal(Å)
3	A	901	Y40	C22-C18	2.68	1.42	1.37
3	A	901	Y40	C8-C6	2.38	1.55	1.52

All (11) bond angle outliers are listed below:

Mol	Chain	Res	Type	Atoms	Z	Observed(°)	Ideal(°)
3	A	901	Y40	C6-C8-N9	-3.63	100.31	103.45
3	A	901	Y40	C3-C2-N1	3.62	106.58	103.45
3	A	901	Y40	C37-C32-C33	3.58	122.34	118.36
3	A	901	Y40	C4-C5-N1	3.24	106.25	103.45
3	A	901	Y40	C32-C33-N29	-2.97	119.66	122.80
3	A	901	Y40	C28-N29-C33	2.84	121.85	117.56
3	A	901	Y40	C39-O38-C30	-2.59	110.12	117.74
3	A	901	Y40	C10-N9-C8	-2.58	107.87	112.59
3	A	901	Y40	O16-C15-N1	-2.54	118.35	122.35
3	A	901	Y40	C34-C33-N29	2.44	122.25	118.69
3	A	901	Y40	C20-C18-C22	2.19	121.86	119.21

There are no chirality outliers.

All (1) torsion outliers are listed below:

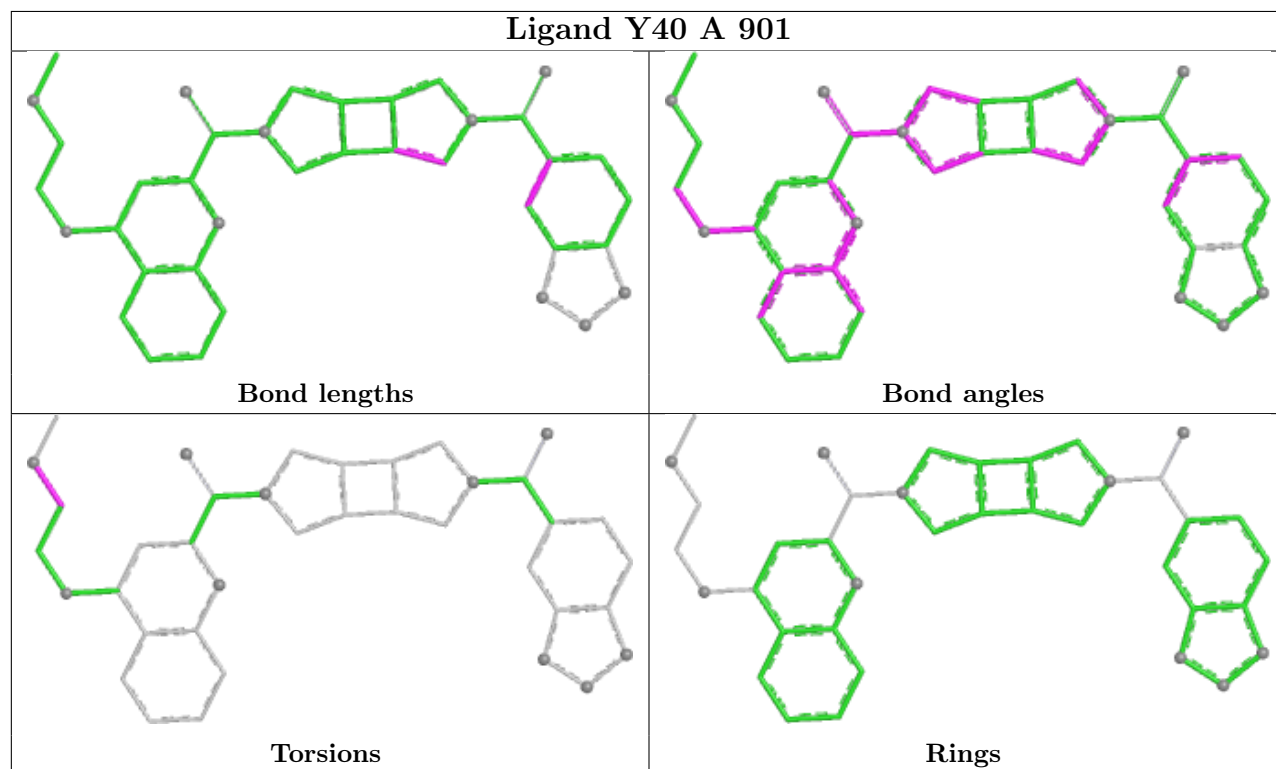
Mol	Chain	Res	Type	Atoms
3	A	901	Y40	C39-C40-O41-C42

There are no ring outliers.

No monomer is involved in short contacts.

The following is a two-dimensional graphical depiction of Mogul quality analysis of bond lengths, bond angles, torsion angles, and ring geometry for all instances of the Ligand of Interest. In addition, ligands with molecular weight > 250 and outliers as shown on the validation Tables will also be included. For torsion angles, if less than 5% of the Mogul distribution of torsion angles is within 10 degrees of the torsion angle in question, then that torsion angle is considered an outlier. Any bond that is central to one or more torsion angles identified as an outlier by Mogul will be highlighted in the graph. For rings, the root-mean-square deviation (RMSD) between the ring

in question and similar rings identified by Mogul is calculated over all ring torsion angles. If the average RMSD is greater than 60 degrees and the minimal RMSD between the ring in question and any Mogul-identified rings is also greater than 60 degrees, then that ring is considered an outlier. The outliers are highlighted in purple. The color gray indicates Mogul did not find sufficient equivalents in the CSD to analyse the geometry.



5.7 Other polymers [\(i\)](#)

There are no such residues in this entry.

5.8 Polymer linkage issues [\(i\)](#)

There are no chain breaks in this entry.

6 Fit of model and data

6.1 Protein, DNA and RNA chains

In the following table, the column labelled ‘#RSRZ > 2’ contains the number (and percentage) of RSRZ outliers, followed by percent RSRZ outliers for the chain as percentile scores relative to all X-ray entries and entries of similar resolution. The OWAB column contains the minimum, median, 95th percentile and maximum values of the occupancy-weighted average B-factor per residue. The column labelled ‘Q < 0.9’ lists the number of (and percentage) of residues with an average occupancy less than 0.9.

Mol	Chain	Analysed	<RSRZ>	#RSRZ>2	OWAB(Å ²)	Q<0.9
1	A	806/846 (95%)	-0.02	43 (5%) 33 40	10, 21, 52, 80	18 (2%)

All (43) RSRZ outliers are listed below:

Mol	Chain	Res	Type	RSRZ
1	A	469	PHE	7.8
1	A	468	CYS	6.8
1	A	51	TRP	6.5
1	A	572	VAL	6.2
1	A	68	VAL	6.2
1	A	578	LEU	6.2
1	A	71	PRO	5.6
1	A	862	ILE	5.4
1	A	70	PRO	5.2
1	A	581	LEU	4.4
1	A	82	TYR	3.4
1	A	378	ASN	3.3
1	A	53	ALA	3.2
1	A	573	GLU	3.2
1	A	585	LEU	3.1
1	A	59	LYS	3.1
1	A	463	LYS	3.0
1	A	81	SER	3.0
1	A	577	LYS	2.9
1	A	251	HIS	2.8
1	A	52	THR	2.8
1	A	462	LYS	2.7
1	A	470	PHE	2.6
1	A	72	ASP	2.5
1	A	458	LEU	2.5
1	A	54	THR	2.5
1	A	366	CYS	2.4

Continued on next page...

Continued from previous page...

Mol	Chain	Res	Type	RSRZ
1	A	861	GLU	2.4
1	A	571	LYS	2.4
1	A	69	GLY	2.4
1	A	56	GLY	2.3
1	A	246	ARG	2.3
1	A	580	GLU	2.3
1	A	55	SER	2.3
1	A	860	SER	2.3
1	A	377	THR	2.3
1	A	244	ARG	2.2
1	A	161	VAL	2.2
1	A	579	GLU	2.1
1	A	60	GLY	2.1
1	A	576	ASN	2.0
1	A	272	THR	2.0
1	A	83	SER	2.0

6.2 Non-standard residues in protein, DNA, RNA chains [i](#)

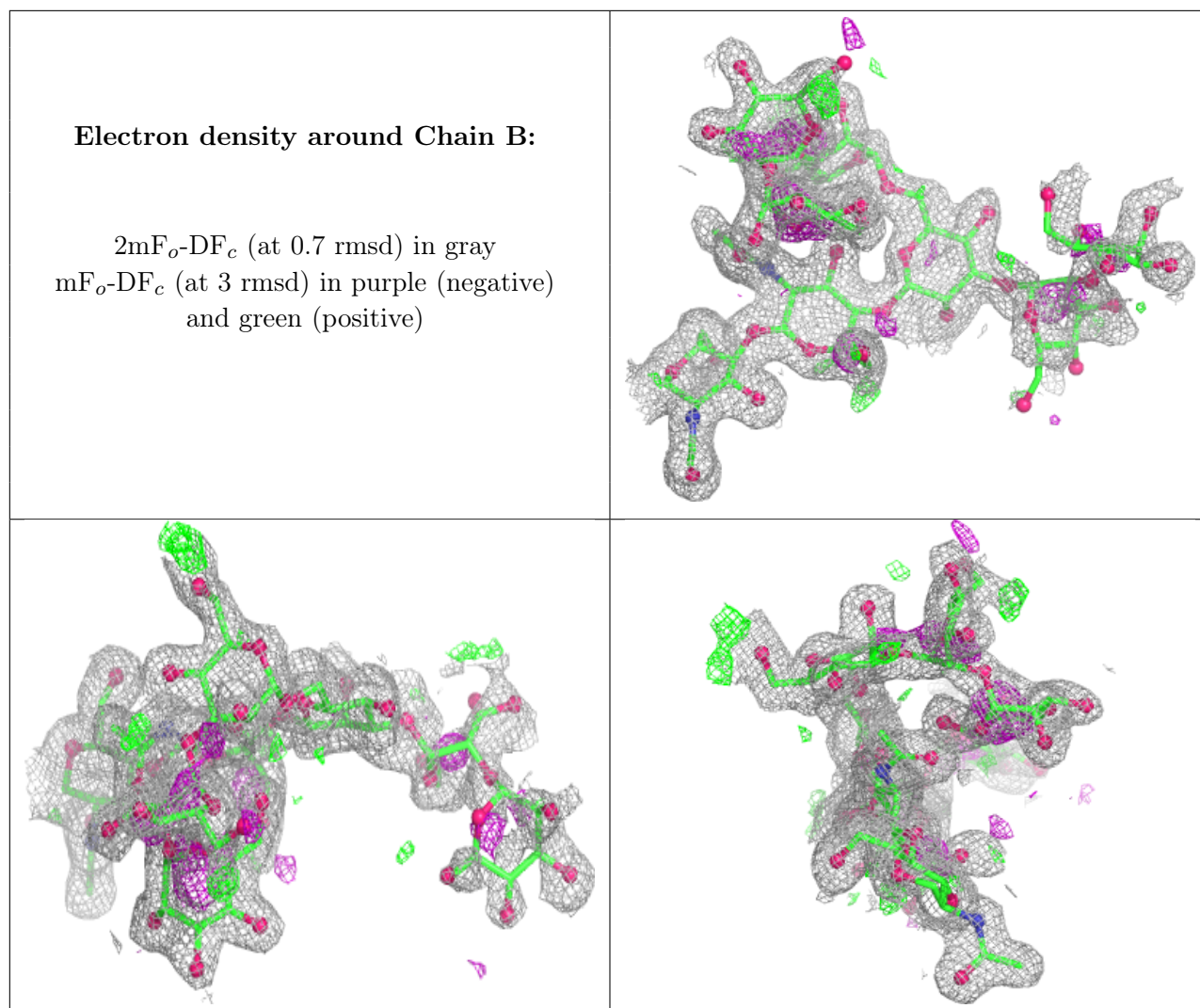
There are no non-standard protein/DNA/RNA residues in this entry.

6.3 Carbohydrates [i](#)

In the following table, the Atoms column lists the number of modelled atoms in the group and the number defined in the chemical component dictionary. The B-factors column lists the minimum, median, 95th percentile and maximum values of B factors of atoms in the group. The column labelled 'Q< 0.9' lists the number of atoms with occupancy less than 0.9.

Mol	Type	Chain	Res	Atoms	RSCC	RSR	B-factors(Å ²)	Q<0.9
2	MAN	B	7	11/12	0.33	0.20	79,80,80,80	0
2	MAN	B	8	11/12	0.62	0.18	49,70,78,80	0
2	BMA	B	3	11/12	0.69	0.15	45,52,60,70	0
2	MAN	B	4	11/12	0.77	0.12	37,43,46,47	0
2	MAN	B	5	11/12	0.80	0.15	35,39,45,58	0
2	MAN	B	6	11/12	0.88	0.13	29,36,39,39	0
2	NAG	B	2	14/15	0.89	0.10	22,27,35,43	0
2	NAG	B	1	14/15	0.97	0.06	13,16,18,18	0

The following is a graphical depiction of the model fit to experimental electron density for oligosaccharide. Each fit is shown from different orientation to approximate a three-dimensional view.



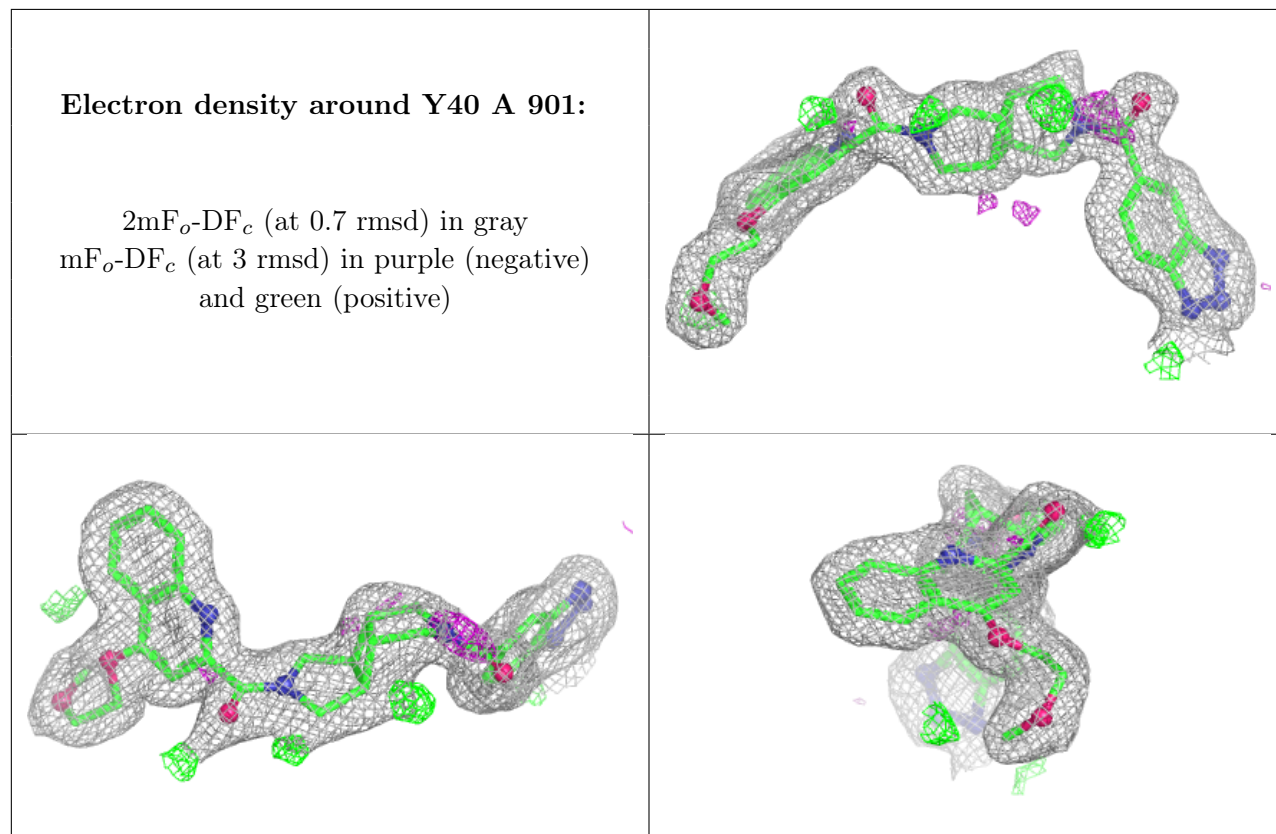
6.4 Ligands [i](#)

In the following table, the Atoms column lists the number of modelled atoms in the group and the number defined in the chemical component dictionary. The B-factors column lists the minimum, median, 95th percentile and maximum values of B factors of atoms in the group. The column labelled 'Q< 0.9' lists the number of atoms with occupancy less than 0.9.

Mol	Type	Chain	Res	Atoms	RSCC	RSR	B-factors(Å ²)	Q<0.9
9	ACT	A	907	4/4	0.91	0.12	25,26,28,31	0
3	Y40	A	901	38/38	0.93	0.09	17,24,31,31	0
5	NA	A	903	1/1	0.95	0.07	26,26,26,26	0
8	CL	A	906	1/1	0.97	0.06	29,29,29,29	0
7	K	A	905	1/1	0.98	0.05	24,24,24,24	0
6	CA	A	904	1/1	1.00	0.02	13,13,13,13	0
4	ZN	A	902	1/1	1.00	0.02	16,16,16,16	0

The following is a graphical depiction of the model fit to experimental electron density of all

instances of the Ligand of Interest. In addition, ligands with molecular weight > 250 and outliers as shown on the geometry validation Tables will also be included. Each fit is shown from different orientation to approximate a three-dimensional view.



6.5 Other polymers [i](#)

There are no such residues in this entry.