



Full wwPDB EM Validation Report ⓘ

Nov 7, 2023 – 11:51 AM EST

PDB ID : 8G5H
EMDB ID : EMD-29743
Title : Native GABA-A receptor from the mouse brain, ortho-alpha1-alpha3-beta2-gamma2 subtype, in complex with GABA, Zolpidem, and endogenous neurosteroid
Authors : Sun, C.; Gouaux, E.
Deposited on : 2023-02-13
Resolution : 2.89 Å(reported)

This is a Full wwPDB EM Validation Report for a publicly released PDB entry.

We welcome your comments at validation@mail.wwpdb.org

A user guide is available at

<https://www.wwpdb.org/validation/2017/EMValidationReportHelp>

with specific help available everywhere you see the ⓘ symbol.

The types of validation reports are described at

<http://www.wwpdb.org/validation/2017/FAQs#types>.

The following versions of software and data (see [references ⓘ](#)) were used in the production of this report:

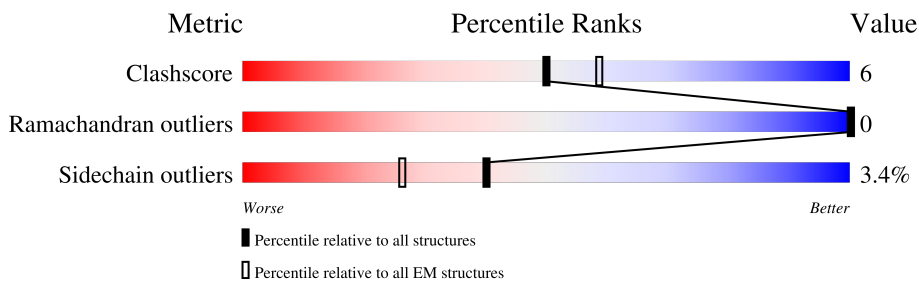
EMDB validation analysis : 0.0.1.dev70
Mogul : 1.8.5 (274361), CSD as541be (2020)
MolProbity : 4.02b-467
buster-report : 1.1.7 (2018)
Percentile statistics : 20191225.v01 (using entries in the PDB archive December 25th 2019)
MapQ : 1.9.9
Ideal geometry (proteins) : Engh & Huber (2001)
Ideal geometry (DNA, RNA) : Parkinson et al. (1996)
Validation Pipeline (wwPDB-VP) : 2.36

1 Overall quality at a glance i

The following experimental techniques were used to determine the structure:
ELECTRON MICROSCOPY

The reported resolution of this entry is 2.89 Å.

Percentile scores (ranging between 0-100) for global validation metrics of the entry are shown in the following graphic. The table shows the number of entries on which the scores are based.



Metric	Whole archive (#Entries)	EM structures (#Entries)
Clashscore	158937	4297
Ramachandran outliers	154571	4023
Sidechain outliers	154315	3826

The table below summarises the geometric issues observed across the polymeric chains and their fit to the map. The red, orange, yellow and green segments of the bar indicate the fraction of residues that contain outliers for ≥ 3 , 2, 1 and 0 types of geometric quality criteria respectively. A grey segment represents the fraction of residues that are not modelled. The numeric value for each fraction is indicated below the corresponding segment, with a dot representing fractions $\leq 5\%$. The upper red bar (where present) indicates the fraction of residues that have poor fit to the EM map (all-atom inclusion $< 40\%$). The numeric value is given above the bar.

Mol	Chain	Length	Quality of chain
1	B	512	
1	E	512	
2	C	455	
3	D	474	
4	J	223	
5	K	213	
6	A	492	
7	F	5	

Continued on next page...

Continued from previous page...

Mol	Chain	Length	Quality of chain
7	G	5	<p>40% 40% 60%</p>
7	H	5	<p>80% 20%</p>
7	L	5	<p>20% 40% 40% 20%</p>
7	M	5	<p>80% 20%</p>
8	I	7	<p>43% 57%</p>
9	N	3	<p>33% 67% 33%</p>

2 Entry composition [i](#)

There are 14 unique types of molecules in this entry. The entry contains 15875 atoms, of which 0 are hydrogens and 0 are deuteriums.

In the tables below, the AltConf column contains the number of residues with at least one atom in alternate conformation and the Trace column contains the number of residues modelled with at most 2 atoms.

- Molecule 1 is a protein called Gamma-aminobutyric acid receptor subunit beta-2.

Mol	Chain	Residues	Atoms					AltConf	Trace
			Total	C	N	O	S		
1	B	332	Total	C	N	O	S	0	0
			2718	1782	435	485	16		
1	E	331	Total	C	N	O	S	0	0
			2711	1778	434	483	16		

- Molecule 2 is a protein called Gamma-aminobutyric acid receptor subunit alpha-1.

Mol	Chain	Residues	Atoms					AltConf	Trace
			Total	C	N	O	S		
2	C	344	Total	C	N	O	S	0	0
			2783	1800	466	501	16		

- Molecule 3 is a protein called Gamma-aminobutyric acid receptor subunit gamma-2.

Mol	Chain	Residues	Atoms					AltConf	Trace
			Total	C	N	O	S		
3	D	318	Total	C	N	O	S	0	0
			2605	1698	428	465	14		

- Molecule 4 is a protein called Heavy Chain of 8E3 Fab.

Mol	Chain	Residues	Atoms					AltConf	Trace
			Total	C	N	O	S		
4	J	117	Total	C	N	O	S	0	0
			920	587	152	177	4		

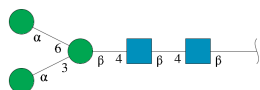
- Molecule 5 is a protein called Light Chain of 8E3 Fab.

Mol	Chain	Residues	Atoms					AltConf	Trace
			Total	C	N	O	S		
5	K	105	Total	C	N	O	S	0	0
			796	505	132	155	4		

- Molecule 6 is a protein called Gamma-aminobutyric acid receptor subunit alpha-3.

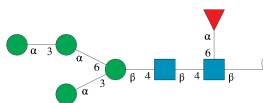
Mol	Chain	Residues	Atoms					AltConf	Trace
			Total	C	N	O	S		
6	A	340	2748	1792	451	491	14	0	0

- Molecule 7 is an oligosaccharide called alpha-D-mannopyranose-(1-3)-[alpha-D-mannopyranose-(1-6)]beta-D-mannopyranose-(1-4)-2-acetamido-2-deoxy-beta-D-glucopyranose-(1-4)-2-acetamido-2-deoxy-beta-D-glucopyranose.



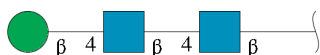
Mol	Chain	Residues	Atoms				AltConf	Trace
			Total	C	N	O		
7	F	5	61	34	2	25	0	0
7	G	5	61	34	2	25	0	0
7	H	5	61	34	2	25	0	0
7	L	5	61	34	2	25	0	0
7	M	5	61	34	2	25	0	0

- Molecule 8 is an oligosaccharide called alpha-D-mannopyranose-(1-3)-alpha-D-mannopyranose-(1-6)-[alpha-D-mannopyranose-(1-3)]beta-D-mannopyranose-(1-4)-2-acetamido-2-deoxy-beta-D-glucopyranose-(1-4)-[alpha-L-fucopyranose-(1-6)]2-acetamido-2-deoxy-beta-D-glucopyranose.



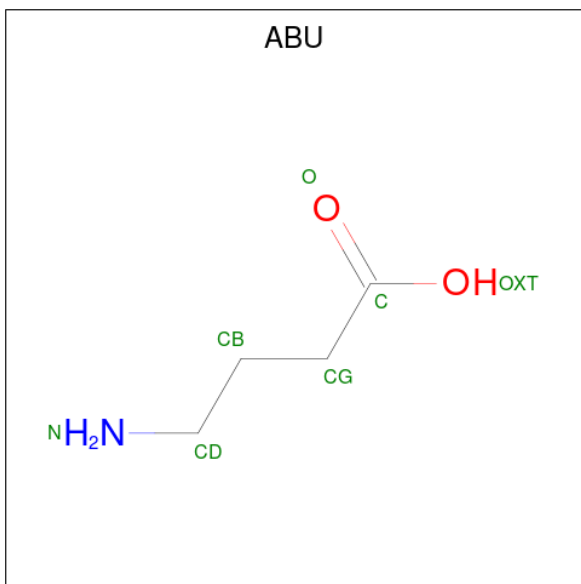
Mol	Chain	Residues	Atoms				AltConf	Trace
			Total	C	N	O		
8	I	7	82	46	2	34	0	0

- Molecule 9 is an oligosaccharide called beta-D-mannopyranose-(1-4)-2-acetamido-2-deoxy-beta-D-glucopyranose-(1-4)-2-acetamido-2-deoxy-beta-D-glucopyranose.



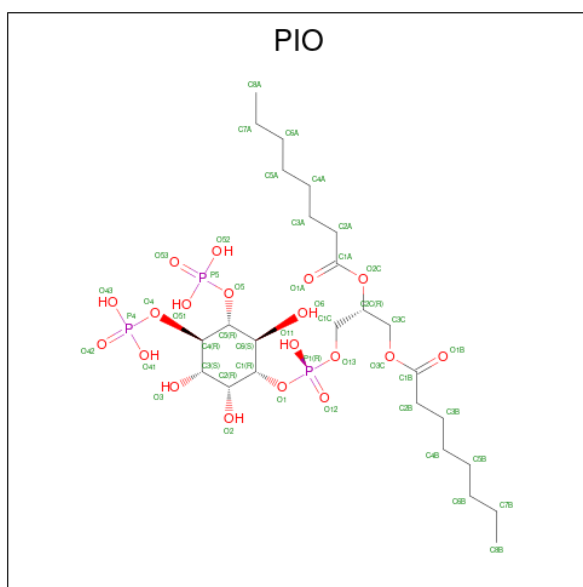
Mol	Chain	Residues	Atoms				AltConf	Trace
			Total	C	N	O		
9	N	3	39	22	2	15	0	0

- Molecule 10 is GAMMA-AMINO-BUTANOIC ACID (three-letter code: ABU) (formula: $C_4H_9NO_2$).



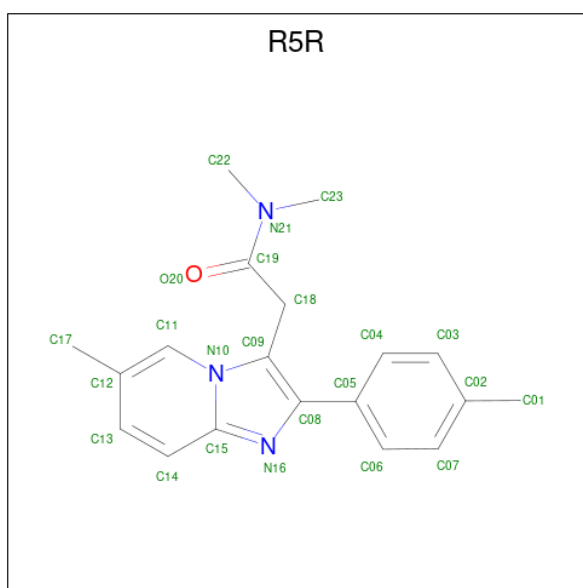
Mol	Chain	Residues	Atoms				AltConf
			Total	C	N	O	
10	B	1	7	4	1	2	0
10	E	1	7	4	1	2	0

- Molecule 11 is [(2R)-2-octanoyloxy-3-[oxidanyl-[(1R,2R,3S,4R,5R,6S)-2,3,6-tris(oxidanyl)-4,5-diphosphonoxy-cyclohexyl]oxy-phosphoryl]oxy-propyl] octanoate (three-letter code: PIO) (formula: $C_{25}H_{49}O_{19}P_3$).



Mol	Chain	Residues	Atoms			AltConf	
11	C	1	Total	C	O	P	0
			47	25	19	3	
11	A	1	Total	C	O	P	0
			47	25	19	3	

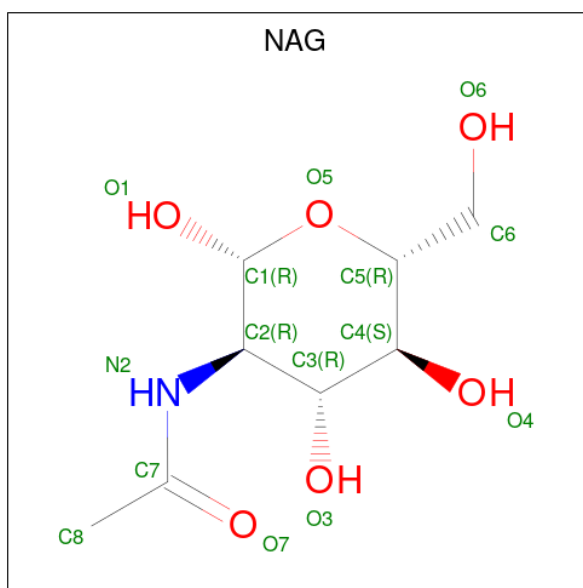
- Molecule 12 is Zolpidem (three-letter code: R5R) (formula: $C_{19}H_{21}N_3O$).



Mol	Chain	Residues	Atoms			AltConf	
12	C	1	Total	C	N	O	0
			23	19	3	1	

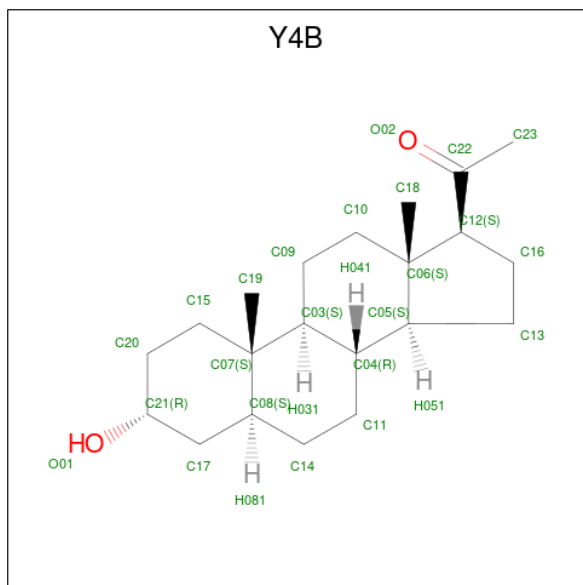
- Molecule 13 is 2-acetamido-2-deoxy-beta-D-glucopyranose (three-letter code: NAG)

(formula: $C_8H_{15}NO_6$).

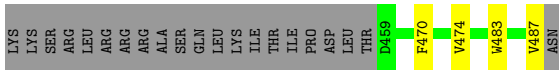


Mol	Chain	Residues	Atoms				AltConf
			Total	C	N	O	
13	D	1	14	8	1	5	0

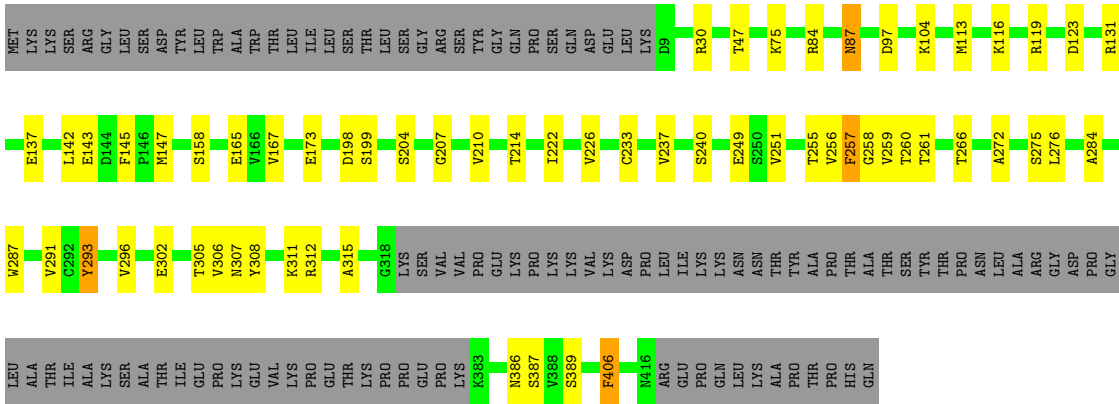
- Molecule 14 is allopregnanolone (three-letter code: Y4B) (formula: $C_{21}H_{34}O_2$).



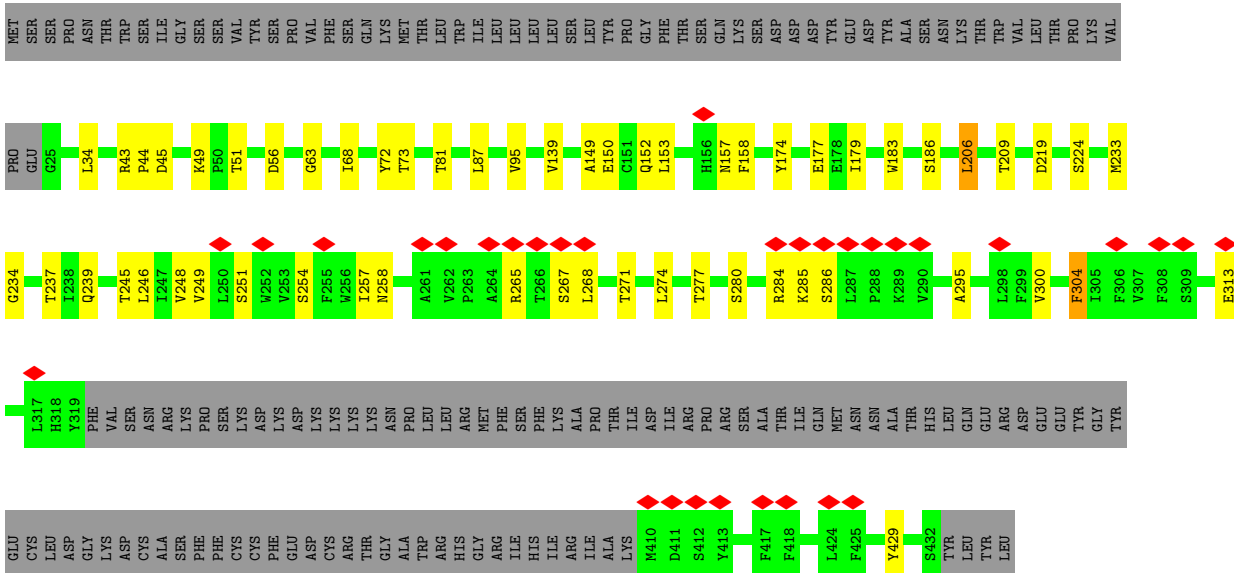
Mol	Chain	Residues	Atoms			AltConf
			Total	C	O	
14	A	1	23	21	2	0



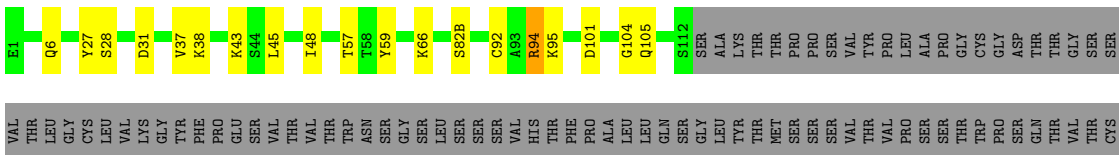
- Molecule 2: Gamma-aminobutyric acid receptor subunit alpha-1



- Molecule 3: Gamma-aminobutyric acid receptor subunit gamma-2



- Molecule 4: Heavy Chain of 8E3 Fab



SER
VAL
ALA
HIS
PRO
ALA
SER
SER
THR
THR
VAL
VAL
ASP
LYS
LYS
SER
ALA
ALA
ALA
ALA
GLU
GLU
VAL
LEU
LEU
PHE
GLN

- Molecule 5: Light Chain of 8E3 Fab

Chain K:



Y1
Q6
K9
T20
S31
Q37
L47
Y65
T74
T101
I105
LYS
ARG
ALA
ASP
ALA
ALA
PRO
THR
VAL
SER
ILE
PHE
PRO
PRO
SER
GLU
GLN
LEU
THR
GLY
ALA
SER
VAL
VAL
CYS
PHE
LEU
ASN
ASN
PHE
TYR
PRO
LYS
ASP
ILE
ASN

VAL
LYS
TRP
LYS
ILE
ASP
GLY
SER
GLU
ARG
GLN
ASN
GLY
VAL
LEU
SER
TRP
THR
ASP
GLN
ASP
SER
LYS
SER
THR
THR
MET
VAL
SER
SER
SER
THR
PHE
LEU
THR
THR
LEU
LEU
SER
LYS
ASP
GLU
TYR
GLU
ARG
GLY
ASN
SER
TYR
THR
CYS
GLU
ALA
THR
ASN
HIS
LYS
THR
THR
THR
SER
SER
PRO
ILE

VAL
LYS
SER
PHE
ASN
ARG
ASN
GLU
CYS

- Molecule 6: Gamma-aminobutyric acid receptor subunit alpha-3

Chain A:



MET
ILE
THR
GLN
MET
THR
HIS
PHE
TYR
VAL
THR
ARG
VAL
VAL
LEU
LEU
LEU
SER
ILE
SER
ILE
LEU
PRO
GLY
THR
THR
THR
GLN
SER
GLY
GLU
SER
ARG
ARG
GLN
GLU
PRO
PRO
GLY
ASP
PHE
VAL
LYS
GLN
ASP
ILE
GLY
SER
SER
PRO
LYS
HIS
ALA
PRO
ASP
ILE
PRO
ASP
SER

THR
ASP
ASN
ILE
T37
L43
D48
D51
R55
F56
G57
A61
D68
I69
S78
D79
T80
D81
M82
T85
L110
L114
F125
M136
L142
L143
R144
M155
L167
E168
D169
M172
L179
Q207
Q214
Y215
I227
V236

R245
P257
T261
V262
L263
L264
Q266
L271
N272
R273
V276
T280
V281
F282
T285
L288
T291
T308
D311
V316
C317
Y318
V321
F322
E327
V331
T335
K336
R337
G343
LYS
LYS
VAL
PRO
GLU
ALA
ALA
VAL
THR
THR
VAL
GLU
MET
LYS
LYS
LYS
THR

PRO
ALA
ALA
PRO
THR
LYS
LYS
ASN
THR
PHE
ASN
ILE
VAL
GLY
THR
TYR
PRO
ILE
ASN
LEU
ALA
ALA
LYS
ASP
THR
GLU
PHE
SER
THR
ILE
SER
LYS
LYS
SER
ALA
ALA
PRO
SER
SER
SER
THR
PRO
THR
ALA
ALA
ALA
SER
PRO
LYS
ALA
ALA
THR
THR
VAL
GLU
ASP
SER
PRO
LYS
ALA

GLU
THR
K419
T420
Y421
M422
S423
Y424
S425
I430
S431
I434
L438
F442
Y451
ASN
ARG
GLU
SER
ALA
ILE
LYS
GLY
MET
ILE
ARG
LYS
GLN

- Molecule 7: alpha-D-mannopyranose-(1-3)-[alpha-D-mannopyranose-(1-6)]beta-D-mannopyranose-(1-4)-2-acetamido-2-deoxy-beta-D-glucopyranose-(1-4)-2-acetamido-2-deoxy-beta-D-glucopyranose

Chain F:



MAG1
MAG2
MAN3
MAN4
MAN5

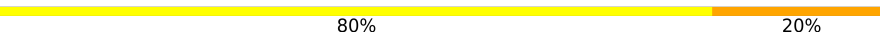
- Molecule 7: alpha-D-mannopyranose-(1-3)-[alpha-D-mannopyranose-(1-6)]beta-D-mannopyranose-(1-4)-2-acetamido-2-deoxy-beta-D-glucopyranose-(1-4)-2-acetamido-2-deoxy-beta-D-glucopyranose

Chain G:



MAG1
MAG2
MAN3
MAN4
MAN5

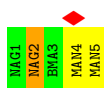
- Molecule 7: alpha-D-mannopyranose-(1-3)-[alpha-D-mannopyranose-(1-6)]beta-D-mannopyranose-(1-4)-2-acetamido-2-deoxy-beta-D-glucopyranose-(1-4)-2-acetamido-2-deoxy-beta-D-glucopyranose

Chain H:  80% 20%

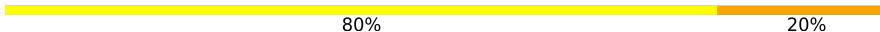


- Molecule 7: alpha-D-mannopyranose-(1-3)-[alpha-D-mannopyranose-(1-6)]beta-D-mannopyranose-(1-4)-2-acetamido-2-deoxy-beta-D-glucopyranose-(1-4)-2-acetamido-2-deoxy-beta-D-glucopyranose

Chain L:  20% 40% 40% 20%



- Molecule 7: alpha-D-mannopyranose-(1-3)-[alpha-D-mannopyranose-(1-6)]beta-D-mannopyranose-(1-4)-2-acetamido-2-deoxy-beta-D-glucopyranose-(1-4)-2-acetamido-2-deoxy-beta-D-glucopyranose

Chain M:  80% 20%



- Molecule 8: alpha-D-mannopyranose-(1-3)-alpha-D-mannopyranose-(1-6)-[alpha-D-mannopyranose-(1-3)]beta-D-mannopyranose-(1-4)-2-acetamido-2-deoxy-beta-D-glucopyranose-(1-4)-[alpha-L-fucopyranose-(1-6)]2-acetamido-2-deoxy-beta-D-glucopyranose

Chain I:  43% 57%



- Molecule 9: beta-D-mannopyranose-(1-4)-2-acetamido-2-deoxy-beta-D-glucopyranose-(1-4)-2-acetamido-2-deoxy-beta-D-glucopyranose

Chain N:  33% 67% 33%



4 Experimental information

Property	Value	Source
EM reconstruction method	SINGLE PARTICLE	Depositor
Imposed symmetry	POINT, C1	Depositor
Number of particles used	91747	Depositor
Resolution determination method	FSC 0.143 CUT-OFF	Depositor
CTF correction method	PHASE FLIPPING AND AMPLITUDE CORRECTION	Depositor
Microscope	FEI TITAN KRIOS	Depositor
Voltage (kV)	300	Depositor
Electron dose ($e^-/\text{\AA}^2$)	50.00	Depositor
Minimum defocus (nm)	800	Depositor
Maximum defocus (nm)	2100	Depositor
Magnification	Not provided	
Image detector	GATAN K3 BIOQUANTUM (6k x 4k)	Depositor
Maximum map value	0.631	Depositor
Minimum map value	-0.212	Depositor
Average map value	0.003	Depositor
Map value standard deviation	0.017	Depositor
Recommended contour level	0.075	Depositor
Map size (Å)	297.36, 297.36, 297.36	wwPDB
Map dimensions	360, 360, 360	wwPDB
Map angles (°)	90.0, 90.0, 90.0	wwPDB
Pixel spacing (Å)	0.826, 0.826, 0.826	Depositor

5 Model quality [i](#)

5.1 Standard geometry [i](#)

Bond lengths and bond angles in the following residue types are not validated in this section: MAN, ABU, Y4B, FUC, BMA, NAG, PIO, R5R

The Z score for a bond length (or angle) is the number of standard deviations the observed value is removed from the expected value. A bond length (or angle) with $|Z| > 5$ is considered an outlier worth inspection. RMSZ is the root-mean-square of all Z scores of the bond lengths (or angles).

Mol	Chain	Bond lengths		Bond angles	
		RMSZ	# Z >5	RMSZ	# Z >5
1	B	0.27	0/2788	0.53	0/3795
1	E	0.27	0/2781	0.52	0/3785
2	C	0.26	0/2854	0.52	0/3878
3	D	0.25	0/2676	0.52	0/3646
4	J	0.29	0/946	0.48	0/1284
5	K	0.28	0/815	0.53	0/1108
6	A	0.27	0/2822	0.52	0/3842
All	All	0.26	0/15682	0.52	0/21338

There are no bond length outliers.

There are no bond angle outliers.

There are no chirality outliers.

There are no planarity outliers.

5.2 Too-close contacts [i](#)

In the following table, the Non-H and H(model) columns list the number of non-hydrogen atoms and hydrogen atoms in the chain respectively. The H(added) column lists the number of hydrogen atoms added and optimized by MolProbity. The Clashes column lists the number of clashes within the asymmetric unit, whereas Symm-Clashes lists symmetry-related clashes.

Mol	Chain	Non-H	H(model)	H(added)	Clashes	Symm-Clashes
1	B	2718	0	2721	44	0
1	E	2711	0	2714	29	0
2	C	2783	0	2763	44	0
3	D	2605	0	2581	31	0
4	J	920	0	863	10	0
5	K	796	0	756	6	0

Continued on next page...

Continued from previous page...

Mol	Chain	Non-H	H(model)	H(added)	Clashes	Symm-Clashes
6	A	2748	0	2744	34	0
7	F	61	0	52	1	0
7	G	61	0	52	0	0
7	H	61	0	52	1	0
7	L	61	0	52	1	0
7	M	61	0	52	2	0
8	I	82	0	70	0	0
9	N	39	0	34	0	0
10	B	7	0	0	1	0
10	E	7	0	0	0	0
11	A	47	0	44	1	0
11	C	47	0	44	4	0
12	C	23	0	0	0	0
13	D	14	0	13	0	0
14	A	23	0	0	0	0
All	All	15875	0	15607	189	0

The all-atom clashscore is defined as the number of clashes found per 1000 atoms (including hydrogen atoms). The all-atom clashscore for this structure is 6.

All (189) close contacts within the same asymmetric unit are listed below, sorted by their clash magnitude.

Atom-1	Atom-2	Interatomic distance (Å)	Clash overlap (Å)
1:B:68:ARG:NH1	1:B:121:ASP:O	2.18	0.77
2:C:204:SER:OG	2:C:207:GLY:O	2.03	0.77
6:A:257:PRO:O	6:A:261:THR:OG1	2.03	0.77
2:C:266:THR:HG1	2:C:293:TYR:HH	1.27	0.76
1:E:269:ARG:NH1	1:E:282:ASP:OD2	2.22	0.72
4:J:28:SER:OG	4:J:31:ASP:OD2	2.07	0.71
1:B:256:THR:O	1:B:260:THR:OG1	2.08	0.71
6:A:55:ARG:NH2	6:A:61:ALA:O	2.23	0.71
2:C:272:ALA:O	2:C:275:SER:OG	2.08	0.70
6:A:288:LEU:O	6:A:291:THR:OG1	2.09	0.70
6:A:273:ARG:NH1	6:A:423:SER:O	2.26	0.69
2:C:30:ARG:NE	2:C:165:GLU:OE1	2.27	0.68
4:J:94:ARG:NH2	4:J:101:ASP:OD2	2.26	0.68
1:B:236:SER:O	1:B:239:SER:OG	2.12	0.67
1:E:52:GLU:OE2	1:E:216:ARG:NH1	2.28	0.66
1:B:163:ASP:OD2	2:C:84:ARG:NE	2.28	0.66
6:A:327:GLU:OE2	6:A:431:SER:OG	2.14	0.66
2:C:312:ARG:O	2:C:386:ASN:ND2	2.28	0.65

Continued on next page...

Continued from previous page...

Atom-1	Atom-2	Interatomic distance (Å)	Clash overlap (Å)
1:E:76:VAL:HG23	1:E:77:ILE:HG23	1.77	0.65
1:B:284:TYR:OH	1:B:479:ASN:OD1	2.12	0.65
6:A:167:LEU:O	6:A:308:THR:HG22	1.97	0.65
1:E:301:LEU:O	1:E:301:LEU:HD22	1.96	0.65
1:B:52:GLU:OE1	1:B:216:ARG:NH2	2.30	0.65
2:C:311:LYS:NZ	11:C:601:PIO:O42	2.30	0.65
5:K:9:LYS:O	5:K:9:LYS:NZ	2.25	0.65
1:E:182:GLU:N	1:E:182:GLU:OE1	2.29	0.64
1:E:470:PHE:O	1:E:474:VAL:HG12	1.97	0.64
1:B:221:PHE:O	1:B:225:THR:OG1	2.13	0.64
2:C:249:GLU:HG2	2:C:315:ALA:HB2	1.79	0.64
3:D:177:GLU:OE1	3:D:177:GLU:N	2.31	0.64
1:B:153:GLU:N	1:B:153:GLU:OE1	2.32	0.64
3:D:285:LYS:O	3:D:285:LYS:NZ	2.30	0.63
1:B:107:HIS:NE2	1:B:131:THR:OG1	2.24	0.63
6:A:276:VAL:O	6:A:280:THR:OG1	2.10	0.63
1:B:202:THR:OG1	10:B:501:ABU:O	2.13	0.63
1:E:243:ASN:ND2	1:E:245:ASP:OD1	2.31	0.63
6:A:207:GLN:N	6:A:207:GLN:OE1	2.32	0.63
2:C:97:ASP:OD1	2:C:158:SER:OG	2.15	0.62
6:A:227:ILE:HD12	6:A:236:VAL:HG21	1.80	0.62
6:A:425:SER:OG	11:A:501:PIO:O12	2.09	0.62
1:E:260:THR:O	1:E:263:THR:OG1	2.14	0.62
1:B:161:THR:HG21	1:B:197:LYS:HD2	1.80	0.62
4:J:6:GLN:O	4:J:105:GLN:NE2	2.33	0.61
7:M:2:NAG:H83	7:M:2:NAG:H3	1.83	0.61
1:B:99:LEU:HD21	2:C:47:THR:HG21	1.83	0.59
1:B:268:LEU:O	1:B:271:THR:OG1	2.18	0.59
2:C:387:SER:OG	11:C:601:PIO:O53	2.11	0.59
1:E:149:ASN:OD1	1:E:150:CYS:N	2.36	0.58
2:C:266:THR:OG1	2:C:293:TYR:OH	2.06	0.58
1:B:187:SER:N	1:B:215:LYS:O	2.37	0.58
2:C:258:GLY:O	2:C:261:THR:OG1	2.20	0.58
6:A:308:THR:N	6:A:311:ASP:OD2	2.37	0.57
1:B:99:LEU:HD21	2:C:47:THR:CG2	2.33	0.57
2:C:143:GLU:N	2:C:143:GLU:OE1	2.37	0.57
2:C:233:CYS:O	2:C:237:VAL:HG23	2.04	0.57
2:C:293:TYR:CE1	3:D:246:LEU:HD13	2.40	0.57
1:E:259:LEU:O	1:E:262:THR:OG1	2.17	0.57
6:A:265:SER:OG	6:A:321:VAL:HG12	2.05	0.56
1:E:483:TRP:O	1:E:487:VAL:N	2.39	0.55

Continued on next page...

Continued from previous page...

Atom-1	Atom-2	Interatomic distance (Å)	Clash overlap (Å)
4:J:6:GLN:OE1	4:J:92:CYS:N	2.37	0.55
7:L:2:NAG:H83	7:L:2:NAG:H3	1.89	0.55
1:B:255:ILE:HD11	2:C:256:VAL:HG12	1.88	0.55
6:A:78:SER:O	6:A:82:MET:N	2.38	0.55
6:A:215:TYR:OH	6:A:245:ARG:NH1	2.39	0.55
1:B:85:ASN:O	1:B:114:ARG:NH2	2.40	0.55
1:B:99:LEU:HD23	1:B:99:LEU:O	2.07	0.55
1:E:190:ASP:OD1	1:E:191:TYR:N	2.39	0.55
1:E:259:LEU:O	1:E:263:THR:HG23	2.06	0.55
2:C:87:ASN:OD1	2:C:116:LYS:NZ	2.22	0.55
1:E:238:VAL:HG13	1:E:253:LEU:HD21	1.89	0.55
3:D:81:THR:OG1	3:D:139:VAL:O	2.13	0.54
3:D:56:ASP:OD2	3:D:186:SER:OG	2.25	0.54
6:A:337:ARG:NH1	6:A:421:TYR:O	2.41	0.54
6:A:68:ASP:OD1	6:A:69:ILE:N	2.41	0.54
1:B:143:TYR:O	1:B:280:ALA:HB3	2.08	0.54
3:D:45:ASP:OD2	3:D:49:LYS:NZ	2.41	0.53
3:D:63:GLY:N	3:D:73:THR:O	2.40	0.53
1:B:7:SER:O	1:B:10:SER:OG	2.17	0.53
2:C:142:LEU:HD13	2:C:276:LEU:HD21	1.91	0.53
2:C:257:PHE:O	2:C:261:THR:HG23	2.08	0.53
2:C:389:SER:OG	11:C:601:PIO:O11	2.26	0.52
2:C:312:ARG:NH1	11:C:601:PIO:O51	2.42	0.52
6:A:430:ILE:CG2	6:A:434:ILE:HD12	2.39	0.52
4:J:92:CYS:O	4:J:104:GLY:N	2.43	0.52
1:B:161:THR:HG21	1:B:197:LYS:CD	2.40	0.52
2:C:167:VAL:HA	2:C:210:VAL:HG11	1.92	0.51
5:K:37:GLN:HB2	5:K:47:LEU:HD11	1.92	0.51
2:C:302:GLU:O	2:C:305:THR:OG1	2.23	0.51
1:E:235:LEU:O	1:E:238:VAL:HG12	2.09	0.51
1:B:254:GLY:O	1:B:257:THR:OG1	2.27	0.50
2:C:104:LYS:NZ	2:C:137:GLU:OE2	2.43	0.50
3:D:274:LEU:HD21	1:E:256:THR:OG1	2.12	0.50
1:B:101:ASP:OD1	2:C:131:ARG:NH2	2.43	0.49
1:B:47:ILE:HG22	1:B:47:ILE:O	2.12	0.49
1:B:193:LEU:HD12	1:B:193:LEU:O	2.12	0.49
1:E:80:ASN:N	1:E:80:ASN:OD1	2.43	0.49
4:J:66:LYS:NZ	4:J:82(B):SER:O	2.46	0.49
1:B:213:LYS:HB2	7:M:1:NAG:H82	1.93	0.49
1:E:291:PHE:CE2	1:E:474:VAL:HG13	2.48	0.49
3:D:268:LEU:O	3:D:271:THR:OG1	2.30	0.49

Continued on next page...

Continued from previous page...

Atom-1	Atom-2	Interatomic distance (Å)	Clash overlap (Å)
1:E:185:GLN:OE1	1:E:185:GLN:N	2.44	0.49
1:E:279:LYS:NZ	1:E:282:ASP:OD1	2.43	0.49
3:D:43:ARG:NH1	3:D:44:PRO:O	2.46	0.49
1:E:191:TYR:CE2	1:E:193:LEU:HD21	2.48	0.48
3:D:248:VAL:O	3:D:251:SER:OG	2.30	0.48
4:J:38:LYS:HB2	4:J:48:ILE:HD11	1.95	0.48
1:B:259:LEU:HD21	2:C:260:THR:HG23	1.96	0.48
2:C:240:SER:OG	2:C:296:VAL:HG12	2.14	0.48
2:C:145:PHE:O	2:C:284:ALA:HB3	2.14	0.48
2:C:198:ASP:OD1	2:C:199:SER:N	2.46	0.47
7:H:2:NAG:H83	7:H:2:NAG:H3	1.96	0.47
1:E:256:THR:O	1:E:260:THR:HG23	2.14	0.47
1:B:110:THR:HG23	6:A:155:MET:SD	2.54	0.47
3:D:157:ASN:OD1	3:D:157:ASN:N	2.47	0.47
6:A:169:ASP:O	6:A:172:MET:N	2.48	0.47
1:B:202:THR:HG22	2:C:119:ARG:NH1	2.29	0.47
2:C:302:GLU:O	2:C:306:VAL:HG23	2.15	0.47
3:D:245:THR:O	3:D:249:VAL:HG23	2.14	0.47
1:B:231:LEU:O	1:B:235:LEU:N	2.45	0.46
6:A:125:PHE:HE2	6:A:179:LEU:HD11	1.81	0.46
2:C:249:GLU:O	2:C:251:VAL:N	2.48	0.46
4:J:101:ASP:OD1	5:K:55:TYR:OH	2.18	0.46
3:D:150:GLU:OE2	3:D:152:GLN:NE2	2.47	0.46
3:D:219:ASP:OD1	3:D:219:ASP:N	2.45	0.46
1:E:192:LYS:C	1:E:193:LEU:HD23	2.35	0.46
2:C:255:THR:O	2:C:259:VAL:HG12	2.16	0.46
1:B:473:VAL:O	1:B:476:SER:OG	2.19	0.45
2:C:222:ILE:O	2:C:226:VAL:HG23	2.16	0.45
1:B:45:ALA:O	1:B:46:SER:OG	2.29	0.45
3:D:280:SER:OG	3:D:284:ARG:NH1	2.48	0.45
4:J:37:VAL:HG11	4:J:45:LEU:HD22	1.98	0.45
3:D:174:TYR:CG	3:D:179:ILE:HD12	2.52	0.45
1:B:41:ASN:N	1:B:41:ASN:OD1	2.50	0.45
1:E:44:ILE:HG22	1:E:181:ILE:HD11	1.99	0.45
6:A:79:ASP:OD1	6:A:80:THR:N	2.50	0.45
1:B:43:ASP:OD1	1:B:176:THR:OG1	2.35	0.44
5:K:31:SER:O	5:K:31:SER:OG	2.35	0.44
6:A:142:LEU:HD12	6:A:143:LEU:H	1.82	0.44
5:K:6:GLN:OE1	5:K:101:THR:N	2.50	0.44
2:C:291:VAL:HG11	2:C:406:PHE:CE1	2.53	0.44
3:D:72:TYR:CE1	3:D:149:ALA:HB3	2.52	0.44

Continued on next page...

Continued from previous page...

Atom-1	Atom-2	Interatomic distance (Å)	Clash overlap (Å)
3:D:257:ILE:O	3:D:265:ARG:NH2	2.50	0.44
6:A:43:LEU:HD21	6:A:110:LEU:HD22	1.98	0.44
6:A:214:GLN:OE1	6:A:214:GLN:N	2.47	0.44
1:B:229:SER:O	1:B:233:THR:OG1	2.26	0.44
1:B:47:ILE:HD12	1:B:181:ILE:HG21	2.00	0.44
6:A:281:VAL:O	6:A:285:THR:OG1	2.22	0.44
2:C:291:VAL:HG11	2:C:406:PHE:CZ	2.53	0.43
2:C:251:VAL:O	2:C:255:THR:OG1	2.15	0.43
6:A:142:LEU:HD11	6:A:144:ARG:NE	2.33	0.43
1:B:190:ASP:OD1	1:B:191:TYR:N	2.50	0.43
1:B:275:ILE:HD12	1:B:275:ILE:O	2.18	0.43
3:D:68:ILE:HD11	3:D:286:SER:O	2.19	0.43
4:J:57:THR:HG1	4:J:59:TYR:HE2	1.65	0.43
3:D:209:THR:OG1	3:D:224:SER:OG	2.36	0.43
3:D:254:SER:HA	3:D:257:ILE:HD12	2.01	0.42
6:A:55:ARG:NH2	6:A:57:GLY:O	2.52	0.42
2:C:75:LYS:NZ	2:C:123:ASP:O	2.52	0.42
6:A:327:GLU:O	6:A:331:VAL:HG23	2.19	0.42
1:B:84:ASP:OD1	1:B:85:ASN:N	2.52	0.42
1:B:161:THR:HG23	1:B:204:SER:O	2.20	0.42
3:D:274:LEU:O	3:D:277:THR:OG1	2.32	0.42
1:B:233:THR:O	1:B:236:SER:OG	2.36	0.42
6:A:438:LEU:O	6:A:438:LEU:HD13	2.20	0.42
1:E:59:LEU:HD23	1:E:60:THR:N	2.35	0.42
3:D:234:GLY:O	3:D:237:THR:OG1	2.37	0.41
6:A:316:VAL:HG11	6:A:442:PHE:CE1	2.55	0.41
3:D:300:VAL:O	3:D:304:PHE:N	2.49	0.41
3:D:267:SER:O	3:D:271:THR:HG23	2.20	0.41
6:A:110:LEU:HD13	6:A:114:LEU:HD13	2.02	0.41
1:E:483:TRP:O	1:E:487:VAL:HG23	2.20	0.41
1:B:281:ILE:O	1:B:285:LEU:HD23	2.21	0.41
2:C:173:GLU:OE1	2:C:173:GLU:N	2.46	0.41
1:E:26:ARG:HD2	6:A:43:LEU:HD23	2.03	0.41
3:D:43:ARG:NH1	3:D:51:THR:OG1	2.53	0.41
1:B:72:LEU:HD12	1:B:124:VAL:HG21	2.03	0.41
2:C:287:TRP:O	2:C:291:VAL:HG12	2.21	0.41
1:B:178:VAL:HG21	1:B:191:TYR:CD1	2.56	0.41
6:A:291:THR:HG22	6:A:318:TYR:OH	2.21	0.41
5:K:20:THR:HG22	5:K:74:THR:HG22	2.03	0.40
2:C:147:MET:HG3	2:C:222:ILE:HD13	2.03	0.40
3:D:34:LEU:HD22	3:D:87:LEU:HA	2.03	0.40

Continued on next page...

Continued from previous page...

Atom-1	Atom-2	Interatomic distance (Å)	Clash overlap (Å)
3:D:158:PHE:O	3:D:295:ALA:HB3	2.20	0.40
7:F:4:MAN:O6	7:F:4:MAN:O4	2.33	0.40
3:D:206:LEU:O	3:D:206:LEU:HD12	2.22	0.40
1:E:85:ASN:OD1	1:E:86:ARG:N	2.54	0.40
1:E:153:GLU:OE1	1:E:207:ARG:NH1	2.54	0.40
6:A:337:ARG:NE	6:A:420:THR:OG1	2.55	0.40
2:C:307:ASN:OD1	3:D:258:ASN:ND2	2.55	0.40

There are no symmetry-related clashes.

5.3 Torsion angles [i](#)

5.3.1 Protein backbone [i](#)

In the following table, the Percentiles column shows the percent Ramachandran outliers of the chain as a percentile score with respect to all PDB entries followed by that with respect to all EM entries.

The Analysed column shows the number of residues for which the backbone conformation was analysed, and the total number of residues.

Mol	Chain	Analysed	Favoured	Allowed	Outliers	Percentiles	
1	B	328/512 (64%)	315 (96%)	13 (4%)	0	100	100
1	E	327/512 (64%)	316 (97%)	11 (3%)	0	100	100
2	C	340/455 (75%)	335 (98%)	5 (2%)	0	100	100
3	D	314/474 (66%)	301 (96%)	13 (4%)	0	100	100
4	J	115/223 (52%)	112 (97%)	3 (3%)	0	100	100
5	K	103/213 (48%)	95 (92%)	8 (8%)	0	100	100
6	A	336/492 (68%)	324 (96%)	12 (4%)	0	100	100
All	All	1863/2881 (65%)	1798 (96%)	65 (4%)	0	100	100

There are no Ramachandran outliers to report.

5.3.2 Protein sidechains [i](#)

In the following table, the Percentiles column shows the percent sidechain outliers of the chain as a percentile score with respect to all PDB entries followed by that with respect to all EM entries.

The Analysed column shows the number of residues for which the sidechain conformation was analysed, and the total number of residues.

Mol	Chain	Analysed	Rotameric	Outliers	Percentiles	
1	B	302/457 (66%)	289 (96%)	13 (4%)	29	62
1	E	301/457 (66%)	291 (97%)	10 (3%)	38	72
2	C	306/404 (76%)	299 (98%)	7 (2%)	50	80
3	D	292/436 (67%)	283 (97%)	9 (3%)	40	74
4	J	98/195 (50%)	94 (96%)	4 (4%)	30	64
5	K	83/188 (44%)	83 (100%)	0	100	100
6	A	304/435 (70%)	289 (95%)	15 (5%)	25	57
All	All	1686/2572 (66%)	1628 (97%)	58 (3%)	40	71

All (58) residues with a non-rotameric sidechain are listed below:

Mol	Chain	Res	Type
1	B	79	LEU
1	B	132	THR
1	B	142	ARG
1	B	193	LEU
1	B	217	ASN
1	B	239	SER
1	B	260	THR
1	B	267	HIS
1	B	269	ARG
1	B	270	GLU
1	B	277	TYR
1	B	286	MET
1	B	293	PHE
2	C	87	ASN
2	C	113	MET
2	C	214	THR
2	C	257	PHE
2	C	293	TYR
2	C	308	TYR
2	C	406	PHE
3	D	95	VAL
3	D	153	LEU
3	D	183	TRP
3	D	206	LEU
3	D	233	MET
3	D	239	GLN

Continued on next page...

Continued from previous page...

Mol	Chain	Res	Type
3	D	304	PHE
3	D	313	GLU
3	D	429	TYR
1	E	49	MET
1	E	80	ASN
1	E	86	ARG
1	E	101	ASP
1	E	193	LEU
1	E	271	THR
1	E	274	LYS
1	E	278	VAL
1	E	286	MET
1	E	289	PHE
4	J	27	TYR
4	J	43	LYS
4	J	94	ARG
4	J	95	LYS
6	A	37	THR
6	A	48	ASP
6	A	51	ASP
6	A	85	THR
6	A	136	MET
6	A	169	ASP
6	A	263	ILE
6	A	266	GLN
6	A	271	LEU
6	A	282	PHE
6	A	318	TYR
6	A	322	PHE
6	A	335	THR
6	A	337	ARG
6	A	442	PHE

Sometimes sidechains can be flipped to improve hydrogen bonding and reduce clashes. All (7) such sidechains are listed below:

Mol	Chain	Res	Type
2	C	307	ASN
2	C	407	ASN
3	D	239	GLN
3	D	258	ASN
5	K	38	GLN
5	K	87	HIS

Continued on next page...

Continued from previous page...

Mol	Chain	Res	Type
6	A	266	GLN

5.3.3 RNA [i](#)

There are no RNA molecules in this entry.

5.4 Non-standard residues in protein, DNA, RNA chains [i](#)

There are no non-standard protein/DNA/RNA residues in this entry.

5.5 Carbohydrates [i](#)

35 monosaccharides are modelled in this entry.

In the following table, the Counts columns list the number of bonds (or angles) for which Mogul statistics could be retrieved, the number of bonds (or angles) that are observed in the model and the number of bonds (or angles) that are defined in the Chemical Component Dictionary. The Link column lists molecule types, if any, to which the group is linked. The Z score for a bond length (or angle) is the number of standard deviations the observed value is removed from the expected value. A bond length (or angle) with $|Z| > 2$ is considered an outlier worth inspection. RMSZ is the root-mean-square of all Z scores of the bond lengths (or angles).

Mol	Type	Chain	Res	Link	Bond lengths			Bond angles		
					Counts	RMSZ	# Z > 2	Counts	RMSZ	# Z > 2
7	NAG	F	1	7,2	14,14,15	0.46	0	17,19,21	0.47	0
7	NAG	F	2	7	14,14,15	0.20	0	17,19,21	0.48	0
7	BMA	F	3	7	11,11,12	0.67	0	15,15,17	0.77	0
7	MAN	F	4	7	11,11,12	0.77	1 (9%)	15,15,17	1.21	2 (13%)
7	MAN	F	5	7	11,11,12	0.63	0	15,15,17	0.91	1 (6%)
7	NAG	G	1	1,7	14,14,15	0.65	0	17,19,21	0.75	1 (5%)
7	NAG	G	2	7	14,14,15	0.22	0	17,19,21	0.44	0
7	BMA	G	3	7	11,11,12	0.52	0	15,15,17	0.82	0
7	MAN	G	4	7	11,11,12	0.69	0	15,15,17	1.19	2 (13%)
7	MAN	G	5	7	11,11,12	0.64	0	15,15,17	0.93	1 (6%)
7	NAG	H	1	1,7	14,14,15	0.96	1 (7%)	17,19,21	0.78	1 (5%)
7	NAG	H	2	7	14,14,15	0.37	0	17,19,21	1.26	2 (11%)
7	BMA	H	3	7	11,11,12	1.05	1 (9%)	15,15,17	1.52	2 (13%)
7	MAN	H	4	7	11,11,12	0.82	1 (9%)	15,15,17	1.24	2 (13%)
7	MAN	H	5	7	11,11,12	0.79	1 (9%)	15,15,17	1.06	2 (13%)

Mol	Type	Chain	Res	Link	Bond lengths			Bond angles		
					Counts	RMSZ	# Z > 2	Counts	RMSZ	# Z > 2
8	NAG	I	1	8,6	14,14,15	0.17	0	17,19,21	0.56	0
8	NAG	I	2	8	14,14,15	0.22	0	17,19,21	0.64	1 (5%)
8	BMA	I	3	8	11,11,12	0.72	0	15,15,17	0.86	0
8	MAN	I	4	8	11,11,12	0.92	1 (9%)	15,15,17	1.24	2 (13%)
8	MAN	I	5	8	11,11,12	0.65	0	15,15,17	1.26	2 (13%)
8	MAN	I	6	8	11,11,12	0.64	0	15,15,17	1.01	2 (13%)
8	FUC	I	7	8	10,10,11	0.65	0	14,14,16	0.87	0
7	NAG	L	1	1,7	14,14,15	0.45	0	17,19,21	0.50	0
7	NAG	L	2	7	14,14,15	0.40	0	17,19,21	1.19	1 (5%)
7	BMA	L	3	7	11,11,12	0.41	0	15,15,17	0.78	0
7	MAN	L	4	7	11,11,12	0.72	0	15,15,17	0.95	2 (13%)
7	MAN	L	5	7	11,11,12	0.73	0	15,15,17	0.99	1 (6%)
7	NAG	M	1	1,7	14,14,15	0.46	0	17,19,21	0.41	0
7	NAG	M	2	7	14,14,15	0.32	0	17,19,21	1.35	2 (11%)
7	BMA	M	3	7	11,11,12	0.87	1 (9%)	15,15,17	1.35	2 (13%)
7	MAN	M	4	7	11,11,12	0.82	1 (9%)	15,15,17	1.27	2 (13%)
7	MAN	M	5	7	11,11,12	0.88	1 (9%)	15,15,17	1.31	3 (20%)
9	NAG	N	1	9,3	14,14,15	0.27	0	17,19,21	0.69	1 (5%)
9	NAG	N	2	9	14,14,15	0.21	0	17,19,21	0.47	0
9	BMA	N	3	9	11,11,12	0.65	0	15,15,17	0.77	0

In the following table, the Chirals column lists the number of chiral outliers, the number of chiral centers analysed, the number of these observed in the model and the number defined in the Chemical Component Dictionary. Similar counts are reported in the Torsion and Rings columns. '-' means no outliers of that kind were identified.

Mol	Type	Chain	Res	Link	Chirals	Torsions	Rings
7	NAG	F	1	7,2	-	4/6/23/26	0/1/1/1
7	NAG	F	2	7	-	2/6/23/26	0/1/1/1
7	BMA	F	3	7	-	0/2/19/22	0/1/1/1
7	MAN	F	4	7	-	2/2/19/22	0/1/1/1
7	MAN	F	5	7	-	0/2/19/22	0/1/1/1
7	NAG	G	1	1,7	-	4/6/23/26	0/1/1/1
7	NAG	G	2	7	-	1/6/23/26	0/1/1/1
7	BMA	G	3	7	-	0/2/19/22	0/1/1/1
7	MAN	G	4	7	-	1/2/19/22	1/1/1/1
7	MAN	G	5	7	-	1/2/19/22	0/1/1/1
7	NAG	H	1	1,7	-	2/6/23/26	0/1/1/1
7	NAG	H	2	7	-	6/6/23/26	0/1/1/1

Continued on next page...

Continued from previous page...

Mol	Type	Chain	Res	Link	Chirals	Torsions	Rings
7	BMA	H	3	7	-	2/2/19/22	0/1/1/1
7	MAN	H	4	7	-	0/2/19/22	0/1/1/1
7	MAN	H	5	7	-	2/2/19/22	1/1/1/1
8	NAG	I	1	8,6	-	0/6/23/26	0/1/1/1
8	NAG	I	2	8	-	4/6/23/26	0/1/1/1
8	BMA	I	3	8	-	2/2/19/22	0/1/1/1
8	MAN	I	4	8	-	1/2/19/22	1/1/1/1
8	MAN	I	5	8	-	0/2/19/22	1/1/1/1
8	MAN	I	6	8	-	1/2/19/22	0/1/1/1
8	FUC	I	7	8	-	-	0/1/1/1
7	NAG	L	1	1,7	-	4/6/23/26	0/1/1/1
7	NAG	L	2	7	-	5/6/23/26	0/1/1/1
7	BMA	L	3	7	-	2/2/19/22	0/1/1/1
7	MAN	L	4	7	-	0/2/19/22	1/1/1/1
7	MAN	L	5	7	-	2/2/19/22	0/1/1/1
7	NAG	M	1	1,7	-	0/6/23/26	0/1/1/1
7	NAG	M	2	7	-	3/6/23/26	0/1/1/1
7	BMA	M	3	7	-	2/2/19/22	0/1/1/1
7	MAN	M	4	7	-	0/2/19/22	0/1/1/1
7	MAN	M	5	7	-	2/2/19/22	0/1/1/1
9	NAG	N	1	9,3	-	4/6/23/26	0/1/1/1
9	NAG	N	2	9	-	0/6/23/26	0/1/1/1
9	BMA	N	3	9	-	0/2/19/22	0/1/1/1

All (9) bond length outliers are listed below:

Mol	Chain	Res	Type	Atoms	Z	Observed(Å)	Ideal(Å)
7	H	1	NAG	O5-C1	-3.33	1.38	1.43
7	H	4	MAN	C1-C2	2.57	1.58	1.52
7	M	5	MAN	C1-C2	2.54	1.58	1.52
7	M	4	MAN	C1-C2	2.54	1.58	1.52
8	I	4	MAN	C1-C2	2.52	1.57	1.52
7	F	4	MAN	C1-C2	2.40	1.57	1.52
7	H	3	BMA	C4-C5	2.21	1.57	1.53
7	M	3	BMA	C1-C2	2.15	1.57	1.52
7	H	5	MAN	C1-C2	2.13	1.57	1.52

All (37) bond angle outliers are listed below:

Mol	Chain	Res	Type	Atoms	Z	Observed(°)	Ideal(°)
7	H	3	BMA	C1-O5-C5	4.59	118.41	112.19
7	M	2	NAG	C2-N2-C7	4.11	128.76	122.90
7	H	2	NAG	C2-N2-C7	4.01	128.61	122.90
7	L	2	NAG	C2-N2-C7	4.00	128.60	122.90
8	I	5	MAN	C1-O5-C5	3.79	117.33	112.19
7	G	4	MAN	C1-O5-C5	3.58	117.04	112.19
8	I	4	MAN	C1-O5-C5	3.58	117.04	112.19
7	M	4	MAN	C1-O5-C5	2.82	116.02	112.19
7	H	4	MAN	C1-O5-C5	2.71	115.86	112.19
7	H	5	MAN	C1-O5-C5	2.69	115.83	112.19
7	F	4	MAN	C1-O5-C5	2.64	115.77	112.19
7	H	1	NAG	C3-C4-C5	2.63	114.93	110.24
7	M	3	BMA	C1-C2-C3	-2.60	106.46	109.67
7	M	5	MAN	C1-C2-C3	2.59	112.85	109.67
7	L	4	MAN	C1-O5-C5	2.48	115.55	112.19
7	M	5	MAN	O2-C2-C3	-2.41	105.30	110.14
7	L	5	MAN	O2-C2-C3	-2.40	105.33	110.14
7	M	4	MAN	O2-C2-C3	-2.40	105.34	110.14
7	H	4	MAN	O2-C2-C3	-2.37	105.40	110.14
7	F	4	MAN	O2-C2-C3	-2.36	105.41	110.14
8	I	5	MAN	O2-C2-C3	-2.35	105.43	110.14
7	G	1	NAG	C2-N2-C7	2.32	126.21	122.90
7	H	2	NAG	C1-C2-N2	2.24	114.31	110.49
7	H	3	BMA	C3-C4-C5	2.22	114.21	110.24
8	I	6	MAN	O2-C2-C3	-2.22	105.69	110.14
7	H	5	MAN	O2-C2-C3	-2.21	105.71	110.14
7	G	4	MAN	O2-C2-C3	-2.21	105.72	110.14
8	I	6	MAN	C1-O5-C5	2.20	115.17	112.19
7	F	5	MAN	O2-C2-C3	-2.17	105.80	110.14
7	G	5	MAN	O2-C2-C3	-2.15	105.83	110.14
7	M	3	BMA	C1-O5-C5	-2.15	109.28	112.19
9	N	1	NAG	C2-N2-C7	2.14	125.95	122.90
8	I	4	MAN	O2-C2-C3	-2.12	105.89	110.14
7	M	5	MAN	C1-O5-C5	2.11	115.05	112.19
7	L	4	MAN	O2-C2-C3	-2.09	105.95	110.14
7	M	2	NAG	C1-C2-N2	2.05	113.99	110.49
8	I	2	NAG	C2-N2-C7	2.04	125.81	122.90

There are no chirality outliers.

All (59) torsion outliers are listed below:

Mol	Chain	Res	Type	Atoms
7	L	3	BMA	O5-C5-C6-O6

Continued on next page...

Continued from previous page...

Mol	Chain	Res	Type	Atoms
7	H	1	NAG	C1-C2-N2-C7
7	F	4	MAN	O5-C5-C6-O6
7	F	1	NAG	O5-C5-C6-O6
7	L	5	MAN	O5-C5-C6-O6
9	N	1	NAG	O5-C5-C6-O6
7	H	3	BMA	C4-C5-C6-O6
7	L	3	BMA	C4-C5-C6-O6
7	G	1	NAG	O5-C5-C6-O6
8	I	3	BMA	C4-C5-C6-O6
7	L	2	NAG	O5-C5-C6-O6
7	M	3	BMA	O5-C5-C6-O6
7	F	4	MAN	C4-C5-C6-O6
9	N	1	NAG	C4-C5-C6-O6
7	G	1	NAG	C8-C7-N2-C2
7	G	1	NAG	O7-C7-N2-C2
7	H	2	NAG	C8-C7-N2-C2
7	H	2	NAG	O7-C7-N2-C2
7	L	1	NAG	C8-C7-N2-C2
7	L	1	NAG	O7-C7-N2-C2
7	L	2	NAG	C8-C7-N2-C2
7	L	2	NAG	O7-C7-N2-C2
7	M	2	NAG	C8-C7-N2-C2
7	M	2	NAG	O7-C7-N2-C2
8	I	2	NAG	C8-C7-N2-C2
8	I	2	NAG	O7-C7-N2-C2
9	N	1	NAG	C8-C7-N2-C2
9	N	1	NAG	O7-C7-N2-C2
7	L	5	MAN	C4-C5-C6-O6
8	I	2	NAG	O5-C5-C6-O6
7	M	5	MAN	O5-C5-C6-O6
7	G	1	NAG	C4-C5-C6-O6
7	H	3	BMA	O5-C5-C6-O6
7	H	5	MAN	C4-C5-C6-O6
7	L	1	NAG	O5-C5-C6-O6
7	M	5	MAN	C4-C5-C6-O6
7	L	1	NAG	C4-C5-C6-O6
8	I	3	BMA	O5-C5-C6-O6
7	H	5	MAN	O5-C5-C6-O6
7	F	1	NAG	C4-C5-C6-O6
7	G	5	MAN	O5-C5-C6-O6
8	I	6	MAN	O5-C5-C6-O6
7	L	2	NAG	C4-C5-C6-O6

Continued on next page...

Continued from previous page...

Mol	Chain	Res	Type	Atoms
8	I	4	MAN	O5-C5-C6-O6
7	G	4	MAN	O5-C5-C6-O6
7	M	3	BMA	C4-C5-C6-O6
7	G	2	NAG	O5-C5-C6-O6
8	I	2	NAG	C4-C5-C6-O6
7	H	2	NAG	C4-C5-C6-O6
7	H	2	NAG	O5-C5-C6-O6
7	F	1	NAG	C3-C2-N2-C7
7	F	2	NAG	C3-C2-N2-C7
7	H	1	NAG	C3-C2-N2-C7
7	L	2	NAG	C3-C2-N2-C7
7	M	2	NAG	C3-C2-N2-C7
7	F	1	NAG	C1-C2-N2-C7
7	F	2	NAG	C1-C2-N2-C7
7	H	2	NAG	C1-C2-N2-C7
7	H	2	NAG	C3-C2-N2-C7

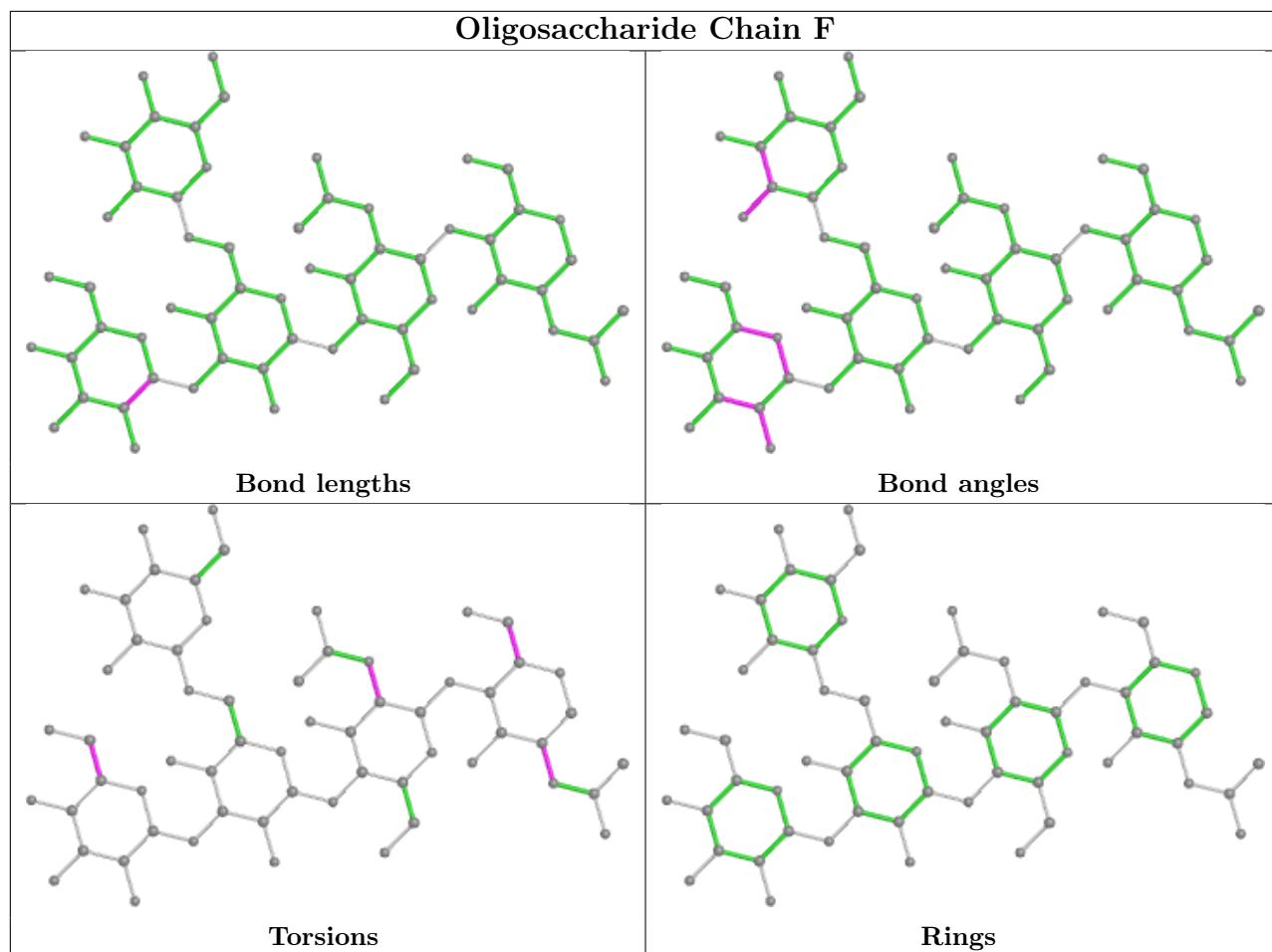
All (5) ring outliers are listed below:

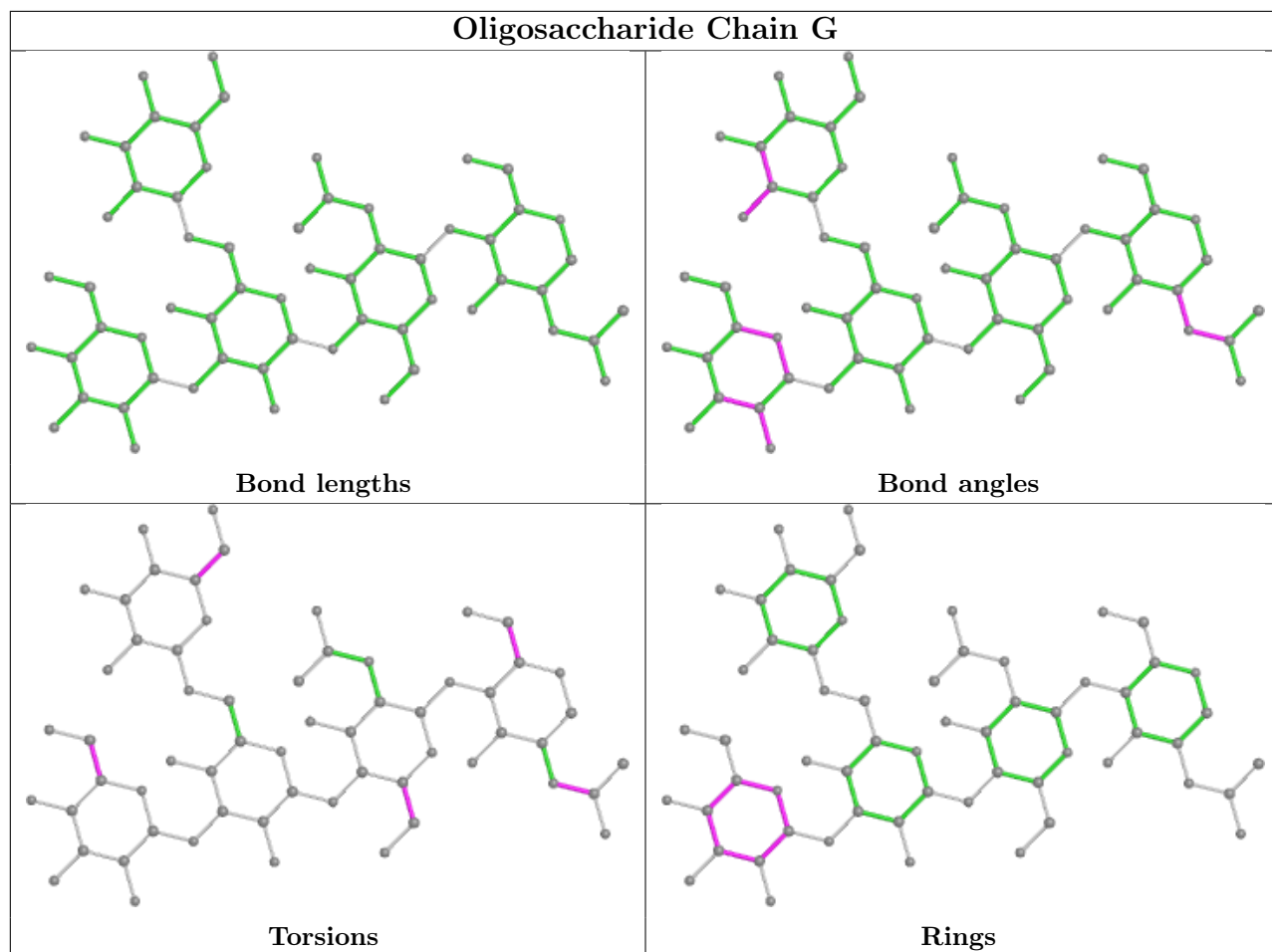
Mol	Chain	Res	Type	Atoms
7	L	4	MAN	C1-C2-C3-C4-C5-O5
8	I	5	MAN	C1-C2-C3-C4-C5-O5
7	G	4	MAN	C1-C2-C3-C4-C5-O5
7	H	5	MAN	C1-C2-C3-C4-C5-O5
8	I	4	MAN	C1-C2-C3-C4-C5-O5

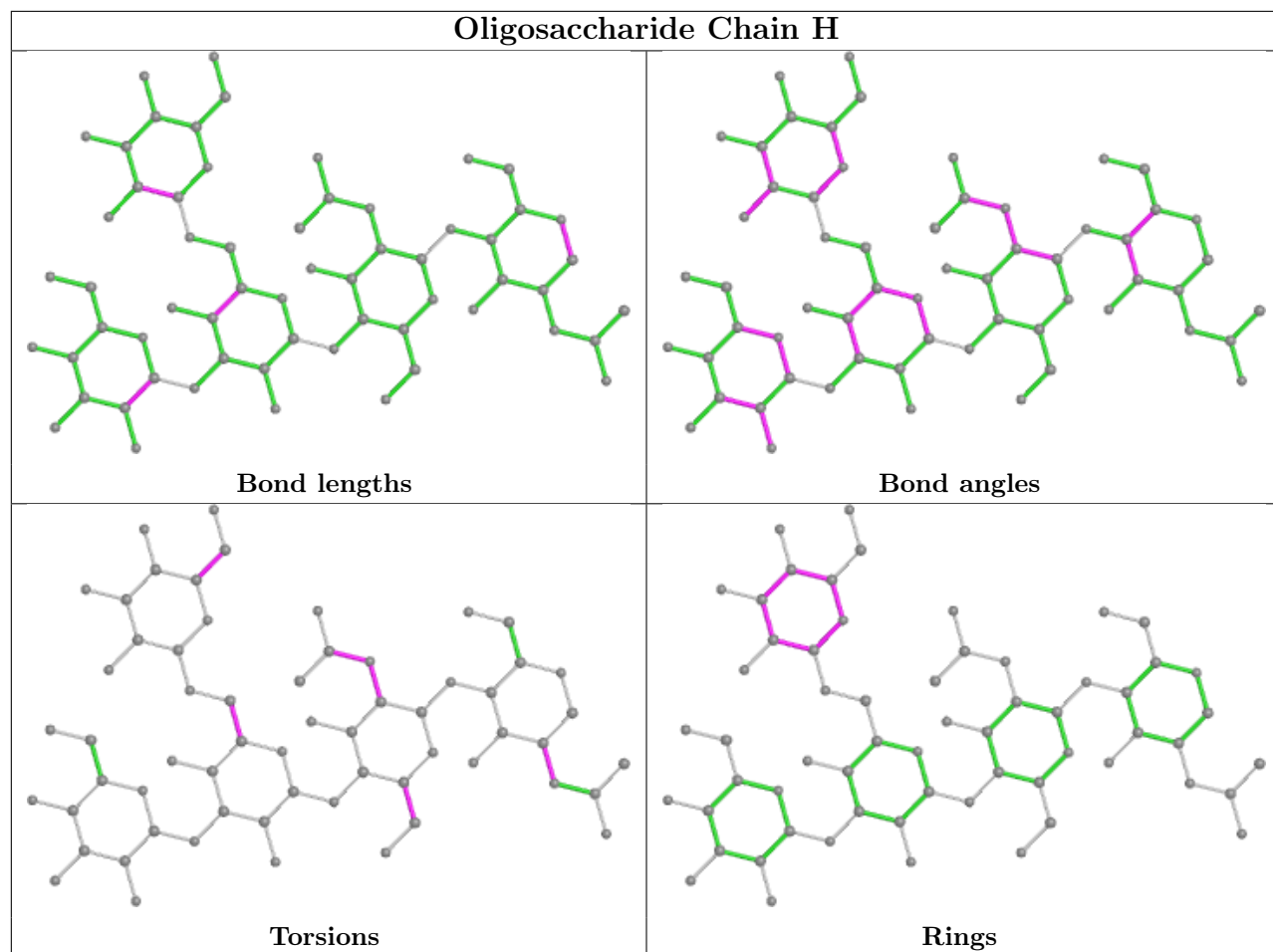
5 monomers are involved in 5 short contacts:

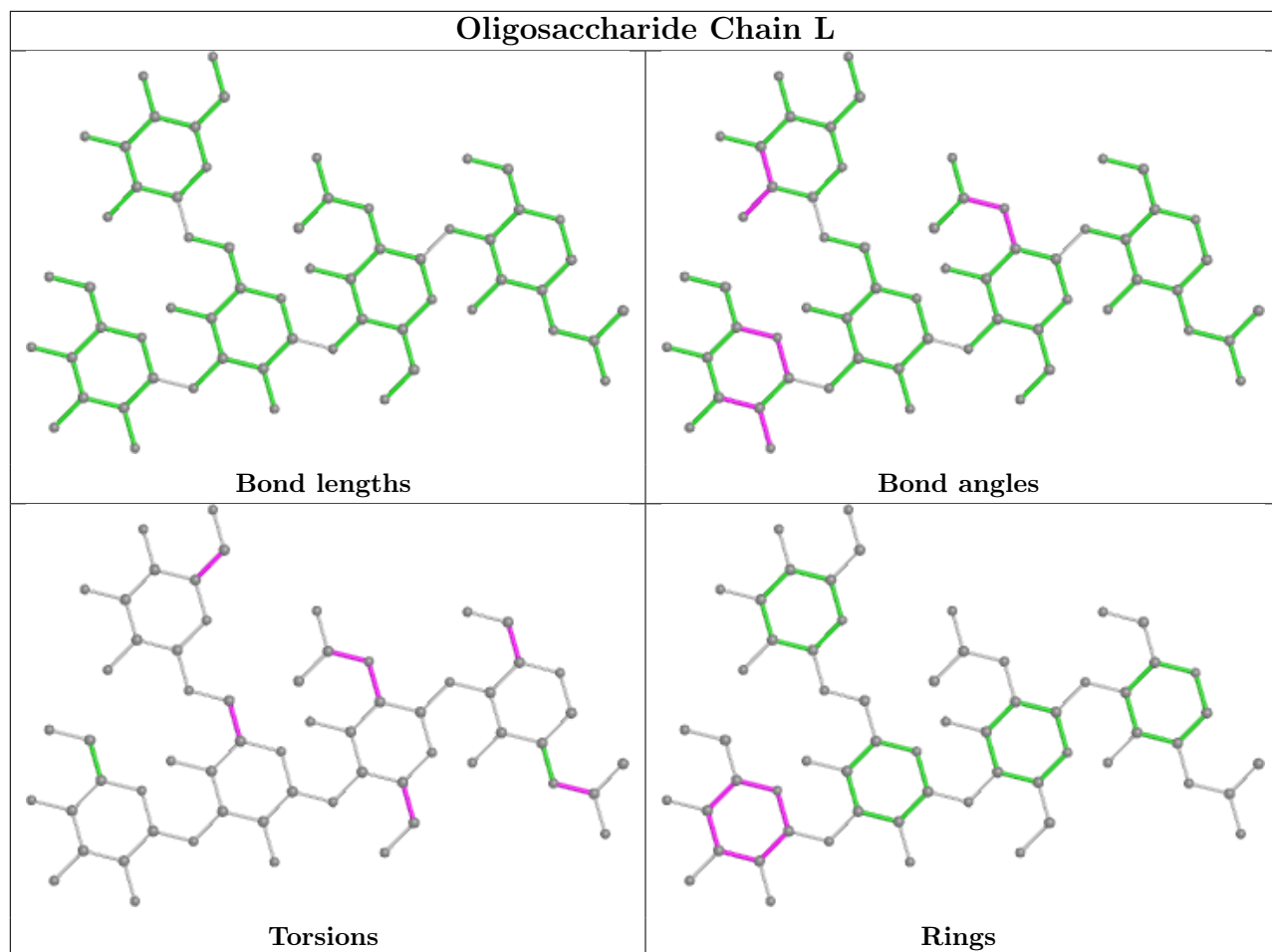
Mol	Chain	Res	Type	Clashes	Symm-Clashes
7	M	2	NAG	1	0
7	L	2	NAG	1	0
7	M	1	NAG	1	0
7	H	2	NAG	1	0
7	F	4	MAN	1	0

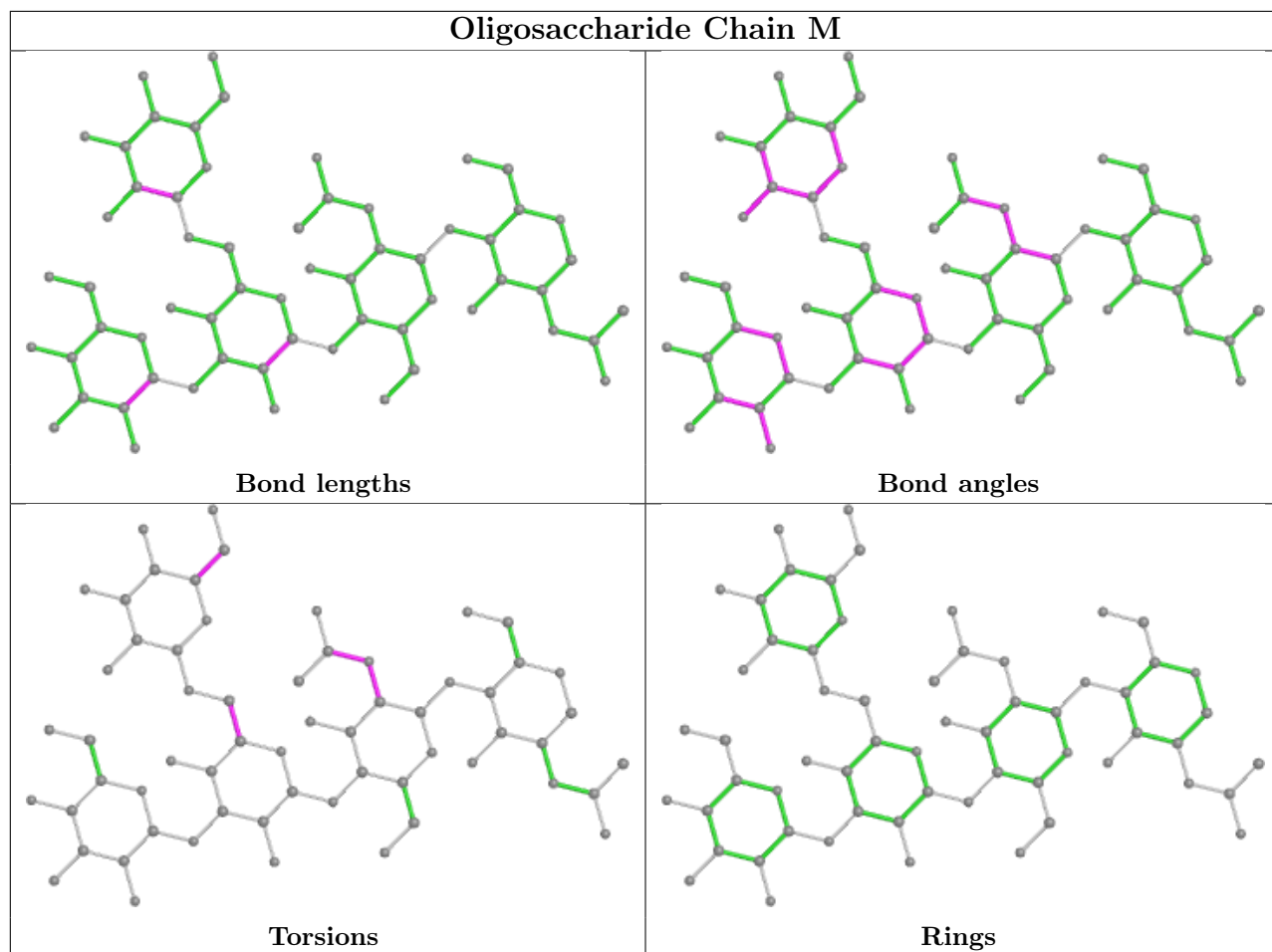
The following is a two-dimensional graphical depiction of Mogul quality analysis of bond lengths, bond angles, torsion angles, and ring geometry for oligosaccharide.

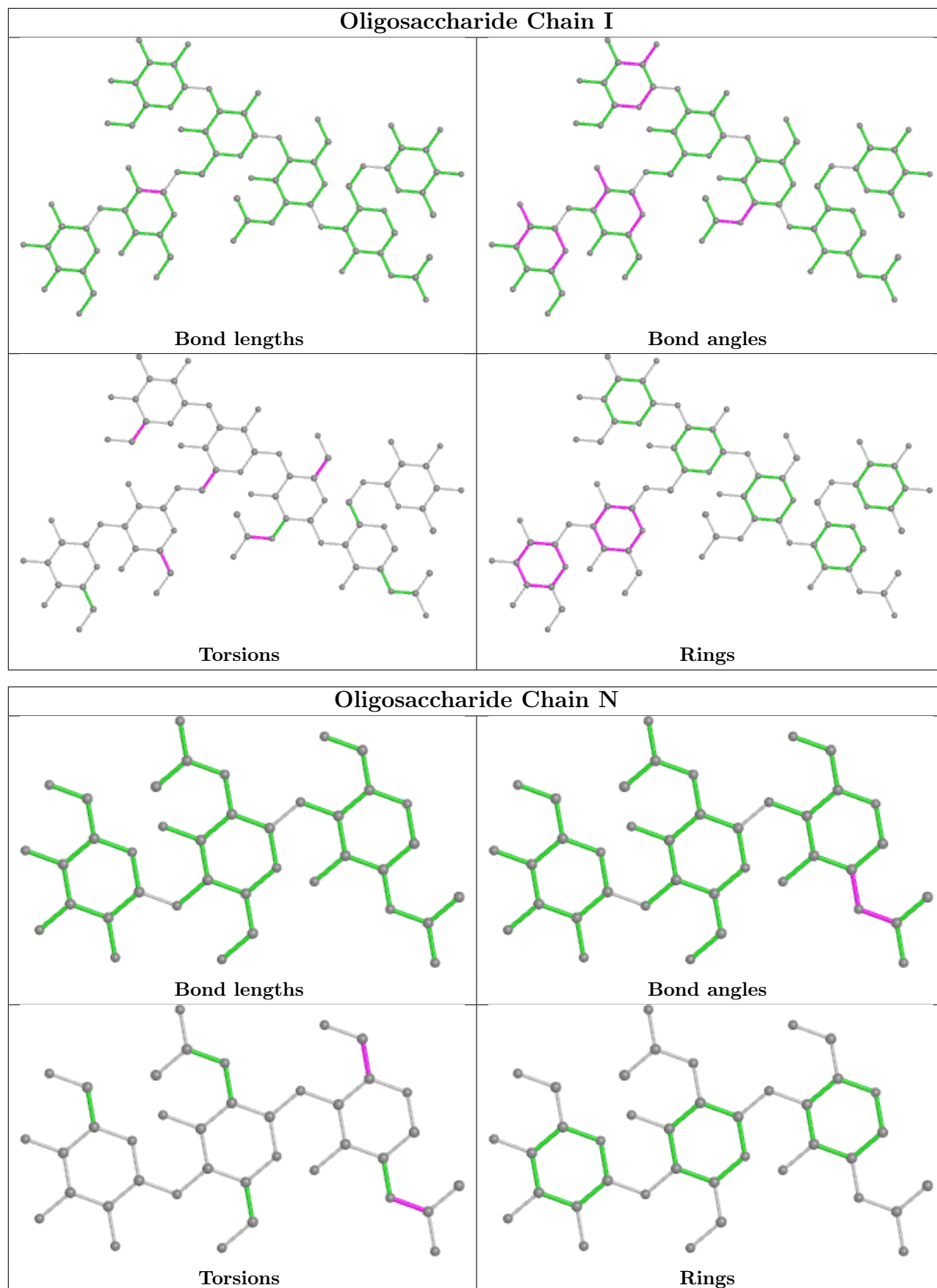












5.6 Ligand geometry

7 ligands are modelled in this entry.

In the following table, the Counts columns list the number of bonds (or angles) for which Mogul statistics could be retrieved, the number of bonds (or angles) that are observed in the model and the number of bonds (or angles) that are defined in the Chemical Component Dictionary. The Link column lists molecule types, if any, to which the group is linked. The Z score for a bond length (or angle) is the number of standard deviations the observed value is removed from the expected value. A bond length (or angle) with $|Z| > 2$ is considered an outlier worth inspection. RMSZ is the root-mean-square of all Z scores of the bond lengths (or angles).

Mol	Type	Chain	Res	Link	Bond lengths			Bond angles		
					Counts	RMSZ	# Z > 2	Counts	RMSZ	# Z > 2
13	NAG	D	501	3	14,14,15	0.25	0	17,19,21	0.70	1 (5%)
12	R5R	C	602	-	23,25,25	2.39	5 (21%)	20,36,36	1.16	2 (10%)
10	ABU	B	501	-	6,6,6	0.90	0	6,6,6	1.32	1 (16%)
10	ABU	E	501	-	6,6,6	0.85	0	6,6,6	1.30	1 (16%)
14	Y4B	A	502	-	26,26,26	1.31	3 (11%)	42,42,42	2.38	20 (47%)
11	PIO	A	501	-	47,47,47	1.38	9 (19%)	61,65,65	1.22	4 (6%)
11	PIO	C	601	-	47,47,47	1.36	10 (21%)	61,65,65	1.17	3 (4%)

In the following table, the Chirals column lists the number of chiral outliers, the number of chiral centers analysed, the number of these observed in the model and the number defined in the Chemical Component Dictionary. Similar counts are reported in the Torsion and Rings columns. '2' means no outliers of that kind were identified.

Mol	Type	Chain	Res	Link	Chirals	Torsions	Rings
13	NAG	D	501	3	-	2/6/23/26	0/1/1/1
12	R5R	C	602	-	-	3/12/12/12	0/3/3/3
10	ABU	B	501	-	-	3/4/4/4	-
10	ABU	E	501	-	-	3/4/4/4	-
14	Y4B	A	502	-	-	4/4/62/62	0/4/4/4
11	PIO	A	501	-	-	12/44/68/68	0/1/1/1
11	PIO	C	601	-	-	16/44/68/68	0/1/1/1

All (27) bond length outliers are listed below:

Mol	Chain	Res	Type	Atoms	Z	Observed(Å)	Ideal(Å)
12	C	602	R5R	C19-N21	9.79	1.46	1.34
14	A	502	Y4B	C04-C05	3.64	1.60	1.53
12	C	602	R5R	C05-C08	3.18	1.52	1.49

Continued on next page...

Continued from previous page...

Mol	Chain	Res	Type	Atoms	Z	Observed(Å)	Ideal(Å)
11	A	501	PIO	P4-O4	3.14	1.65	1.59
11	C	601	PIO	P4-O4	3.14	1.65	1.59
11	C	601	PIO	P5-O5	3.11	1.65	1.59
11	A	501	PIO	P5-O5	3.10	1.65	1.59
14	A	502	Y4B	C07-C03	2.81	1.61	1.56
12	C	602	R5R	C15-N16	2.58	1.35	1.33
11	A	501	PIO	O3C-C1B	2.48	1.40	1.33
11	C	601	PIO	O3C-C1B	2.38	1.40	1.33
12	C	602	R5R	C18-C09	2.38	1.53	1.50
11	A	501	PIO	O2C-C1A	2.35	1.40	1.34
11	C	601	PIO	O2C-C1A	2.34	1.40	1.34
14	A	502	Y4B	C17-C21	2.30	1.56	1.51
11	A	501	PIO	O2C-C2C	-2.30	1.40	1.46
11	A	501	PIO	P4-O41	-2.23	1.46	1.54
11	A	501	PIO	P5-O51	-2.20	1.46	1.54
11	A	501	PIO	P4-O43	-2.19	1.46	1.54
11	C	601	PIO	P5-O51	-2.18	1.46	1.54
11	C	601	PIO	P4-O41	-2.18	1.46	1.54
11	C	601	PIO	P4-O43	-2.18	1.46	1.54
11	A	501	PIO	P5-O52	-2.17	1.46	1.54
11	C	601	PIO	P5-O52	-2.15	1.46	1.54
11	C	601	PIO	O3C-C3C	-2.07	1.40	1.45
12	C	602	R5R	O20-C19	-2.01	1.18	1.23
11	C	601	PIO	O2C-C2C	-2.00	1.41	1.46

All (32) bond angle outliers are listed below:

Mol	Chain	Res	Type	Atoms	Z	Observed(°)	Ideal(°)
14	A	502	Y4B	C23-C22-C12	5.00	124.83	117.56
14	A	502	Y4B	C10-C06-C12	4.56	121.67	116.10
14	A	502	Y4B	C12-C06-C05	4.16	104.16	99.72
11	C	601	PIO	O2C-C1A-C2A	4.09	120.32	111.50
14	A	502	Y4B	C08-C17-C21	4.03	118.67	112.76
14	A	502	Y4B	O02-C22-C23	-4.03	114.00	121.15
11	A	501	PIO	O2C-C1A-C2A	3.90	119.90	111.50
14	A	502	Y4B	C13-C05-C06	-3.56	99.56	103.84
14	A	502	Y4B	C05-C04-C03	3.42	113.67	109.09
14	A	502	Y4B	C13-C05-C04	3.39	124.66	119.08
14	A	502	Y4B	C09-C03-C04	-3.28	107.03	111.75
14	A	502	Y4B	C16-C12-C06	-3.04	101.50	104.21
14	A	502	Y4B	C18-C06-C10	-2.92	105.98	110.59
14	A	502	Y4B	C11-C04-C03	-2.79	107.04	110.49

Continued on next page...

Continued from previous page...

Mol	Chain	Res	Type	Atoms	Z	Observed(°)	Ideal(°)
11	A	501	PIO	O3C-C1B-C2B	2.75	120.52	111.91
12	C	602	R5R	O20-C19-C18	-2.69	117.22	121.60
14	A	502	Y4B	C14-C08-C07	-2.66	107.53	112.31
14	A	502	Y4B	C15-C07-C03	2.61	115.46	111.35
11	C	601	PIO	O3C-C1B-C2B	2.57	119.98	111.91
14	A	502	Y4B	C15-C20-C21	2.54	113.72	110.47
11	C	601	PIO	O11-P1-O12	-2.37	100.51	112.24
14	A	502	Y4B	C14-C11-C04	2.30	115.93	112.14
14	A	502	Y4B	C18-C06-C12	-2.29	106.53	110.24
13	D	501	NAG	C2-N2-C7	2.28	126.15	122.90
14	A	502	Y4B	C07-C03-C04	2.28	114.81	112.42
11	A	501	PIO	O1-C1-C2	2.27	113.94	108.66
10	B	501	ABU	OXT-C-CG	2.25	121.25	114.03
14	A	502	Y4B	C06-C05-C04	-2.24	111.07	114.38
11	A	501	PIO	O11-P1-O12	-2.23	101.23	112.24
12	C	602	R5R	O20-C19-N21	-2.13	118.39	121.83
14	A	502	Y4B	C16-C12-C22	-2.12	111.00	114.23
10	E	501	ABU	CB-CG-C	-2.01	109.39	114.47

There are no chirality outliers.

All (43) torsion outliers are listed below:

Mol	Chain	Res	Type	Atoms
10	B	501	ABU	CD-CB-CG-C
11	C	601	PIO	C1C-O13-P1-O1
11	C	601	PIO	C1C-O13-P1-O11
11	C	601	PIO	C1C-O13-P1-O12
11	C	601	PIO	C5-O5-P5-O52
11	C	601	PIO	C2A-C1A-O2C-C2C
11	A	501	PIO	C2-C1-O1-P1
12	C	602	R5R	C04-C05-C08-N16
12	C	602	R5R	C06-C05-C08-N16
11	C	601	PIO	O1B-C1B-O3C-C3C
11	C	601	PIO	O1A-C1A-O2C-C2C
11	C	601	PIO	C2B-C1B-O3C-C3C
13	D	501	NAG	C8-C7-N2-C2
13	D	501	NAG	O7-C7-N2-C2
10	E	501	ABU	CD-CB-CG-C
11	C	601	PIO	C1B-C2B-C3B-C4B
11	A	501	PIO	C3B-C4B-C5B-C6B
11	C	601	PIO	C3B-C4B-C5B-C6B
11	A	501	PIO	C4A-C5A-C6A-C7A

Continued on next page...

Continued from previous page...

Mol	Chain	Res	Type	Atoms
11	C	601	PIO	C4A-C5A-C6A-C7A
11	C	601	PIO	C1C-C2C-O2C-C1A
11	A	501	PIO	C2B-C1B-O3C-C3C
11	C	601	PIO	C1C-C2C-C3C-O3C
11	A	501	PIO	O1B-C1B-O3C-C3C
11	A	501	PIO	O2C-C2C-C3C-O3C
11	A	501	PIO	C4-O4-P4-O42
11	C	601	PIO	O2C-C2C-C3C-O3C
11	A	501	PIO	C1C-O13-P1-O1
11	A	501	PIO	C5B-C6B-C7B-C8B
11	C	601	PIO	C5B-C6B-C7B-C8B
10	E	501	ABU	O-C-CG-CB
10	E	501	ABU	OXT-C-CG-CB
11	A	501	PIO	C4B-C5B-C6B-C7B
14	A	502	Y4B	C16-C12-C22-O02
11	A	501	PIO	C1C-C2C-C3C-O3C
11	C	601	PIO	C4-C5-O5-P5
11	A	501	PIO	C3-C4-O4-P4
10	B	501	ABU	CG-CB-CD-N
14	A	502	Y4B	C06-C12-C22-C23
14	A	502	Y4B	C06-C12-C22-O02
12	C	602	R5R	C09-C18-C19-O20
14	A	502	Y4B	C16-C12-C22-C23
10	B	501	ABU	O-C-CG-CB

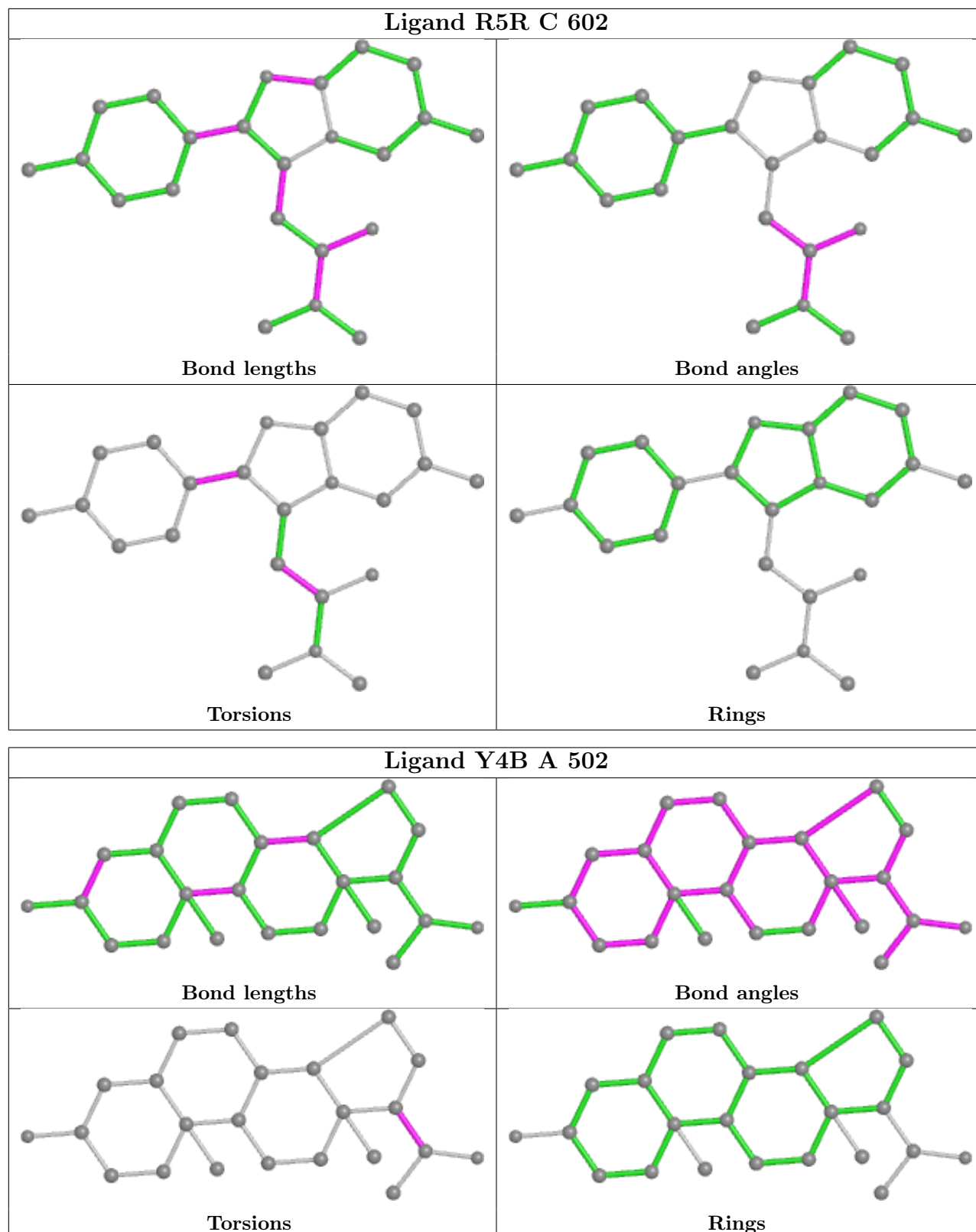
There are no ring outliers.

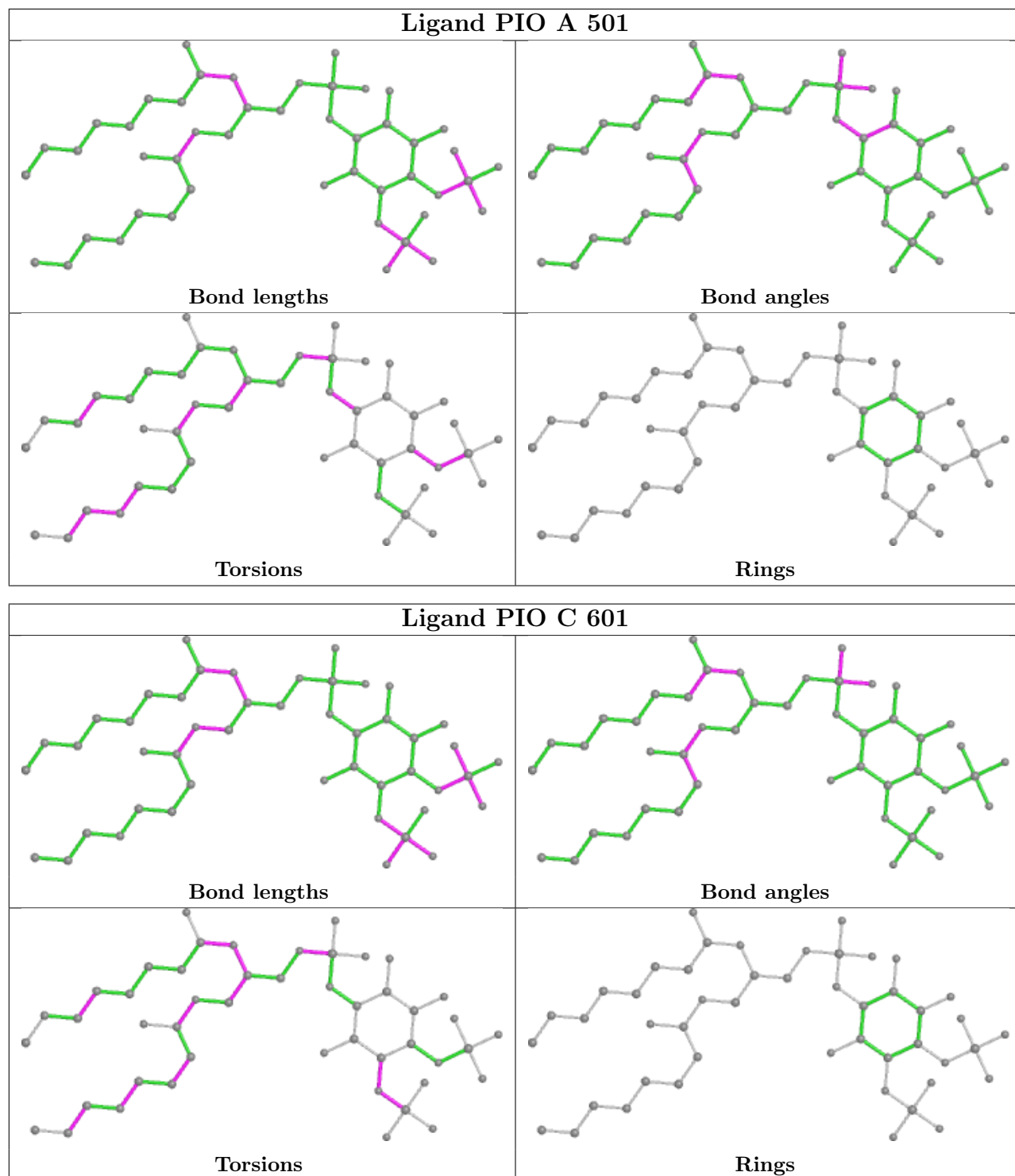
3 monomers are involved in 6 short contacts:

Mol	Chain	Res	Type	Clashes	Symm-Clashes
10	B	501	ABU	1	0
11	A	501	PIO	1	0
11	C	601	PIO	4	0

The following is a two-dimensional graphical depiction of Mogul quality analysis of bond lengths, bond angles, torsion angles, and ring geometry for all instances of the Ligand of Interest. In addition, ligands with molecular weight > 250 and outliers as shown on the validation Tables will also be included. For torsion angles, if less than 5% of the Mogul distribution of torsion angles is within 10 degrees of the torsion angle in question, then that torsion angle is considered an outlier. Any bond that is central to one or more torsion angles identified as an outlier by Mogul will be highlighted in the graph. For rings, the root-mean-square deviation (RMSD) between the ring in question and similar rings identified by Mogul is calculated over all ring torsion angles. If the average RMSD is greater than 60 degrees and the minimal RMSD between the ring in question and

any Mogul-identified rings is also greater than 60 degrees, then that ring is considered an outlier. The outliers are highlighted in purple. The color gray indicates Mogul did not find sufficient equivalents in the CSD to analyse the geometry.





5.7 Other polymers [\(i\)](#)

There are no such residues in this entry.

5.8 Polymer linkage issues

There are no chain breaks in this entry.

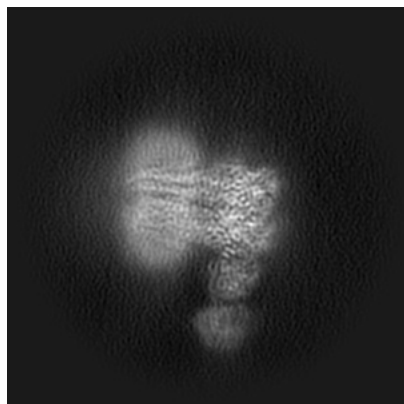
6 Map visualisation [i](#)

This section contains visualisations of the EMDB entry EMD-29743. These allow visual inspection of the internal detail of the map and identification of artifacts.

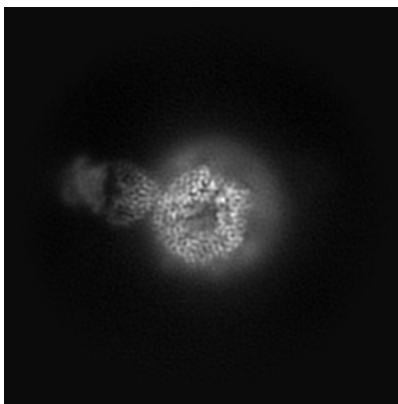
Images derived from a raw map, generated by summing the deposited half-maps, are presented below the corresponding image components of the primary map to allow further visual inspection and comparison with those of the primary map.

6.1 Orthogonal projections [i](#)

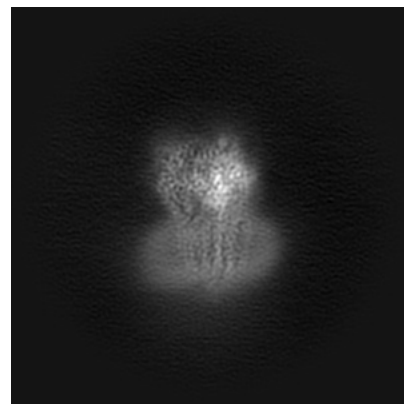
6.1.1 Primary map



X

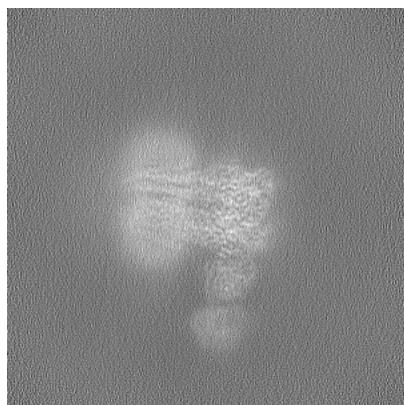


Y

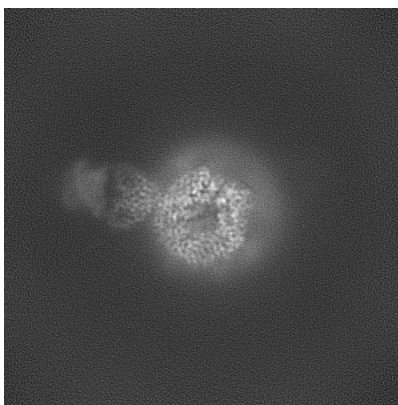


Z

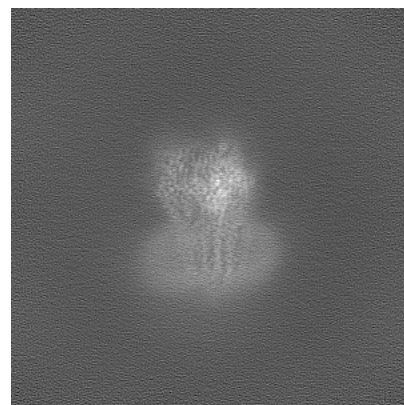
6.1.2 Raw map



X



Y

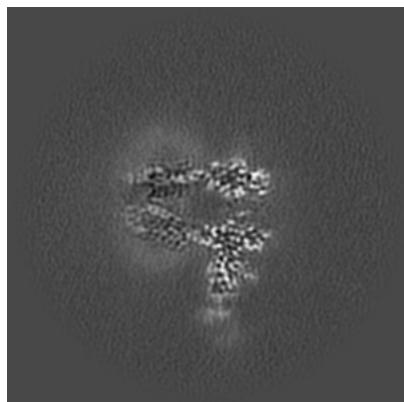


Z

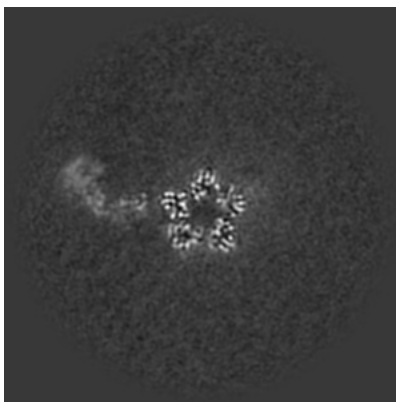
The images above show the map projected in three orthogonal directions.

6.2 Central slices [i](#)

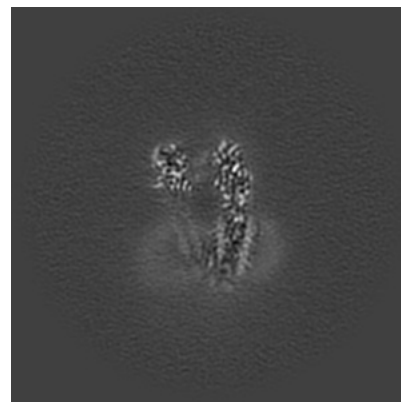
6.2.1 Primary map



X Index: 180

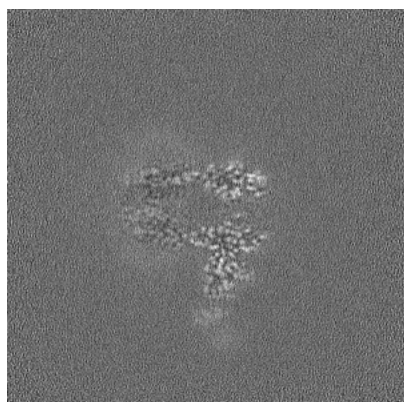


Y Index: 180

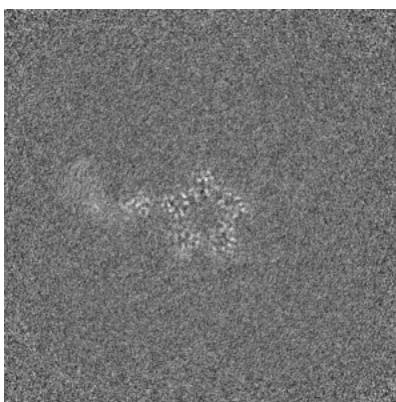


Z Index: 180

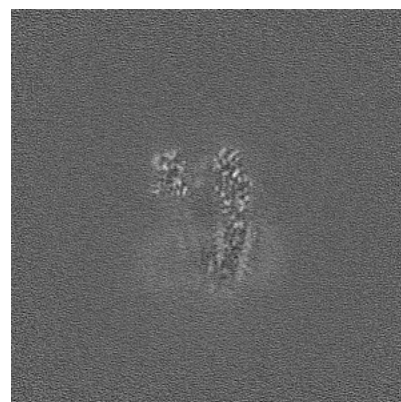
6.2.2 Raw map



X Index: 180



Y Index: 180

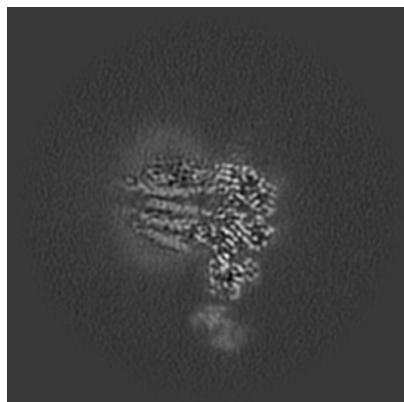


Z Index: 180

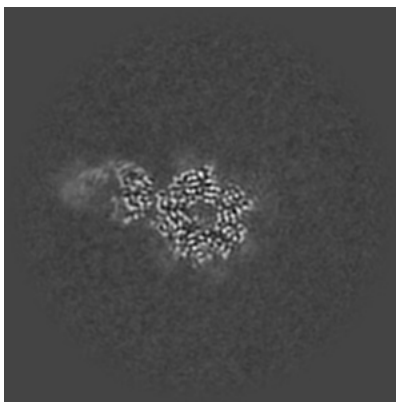
The images above show central slices of the map in three orthogonal directions.

6.3 Largest variance slices [i](#)

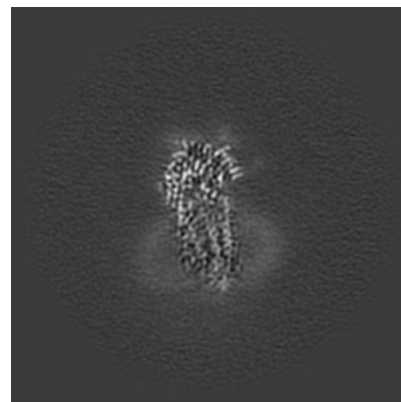
6.3.1 Primary map



X Index: 187

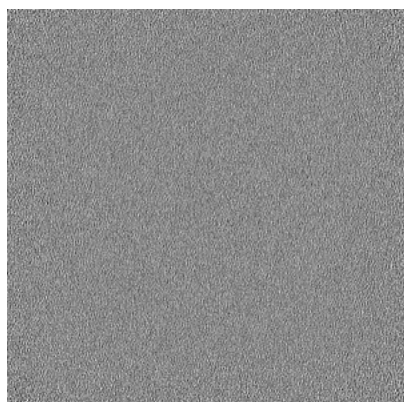


Y Index: 204

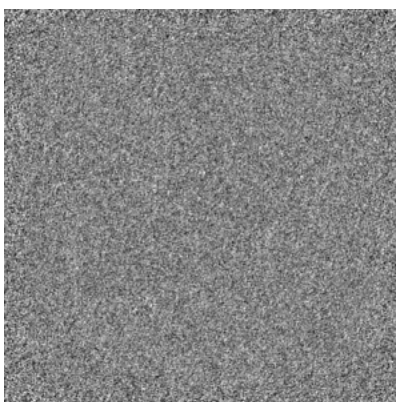


Z Index: 203

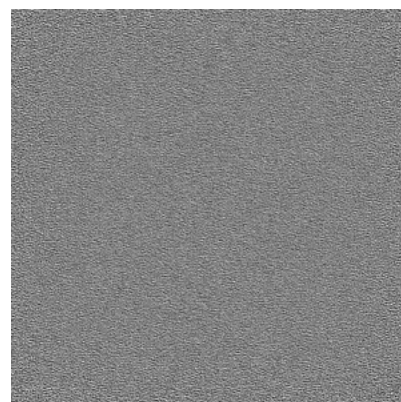
6.3.2 Raw map



X Index: 0



Y Index: 0

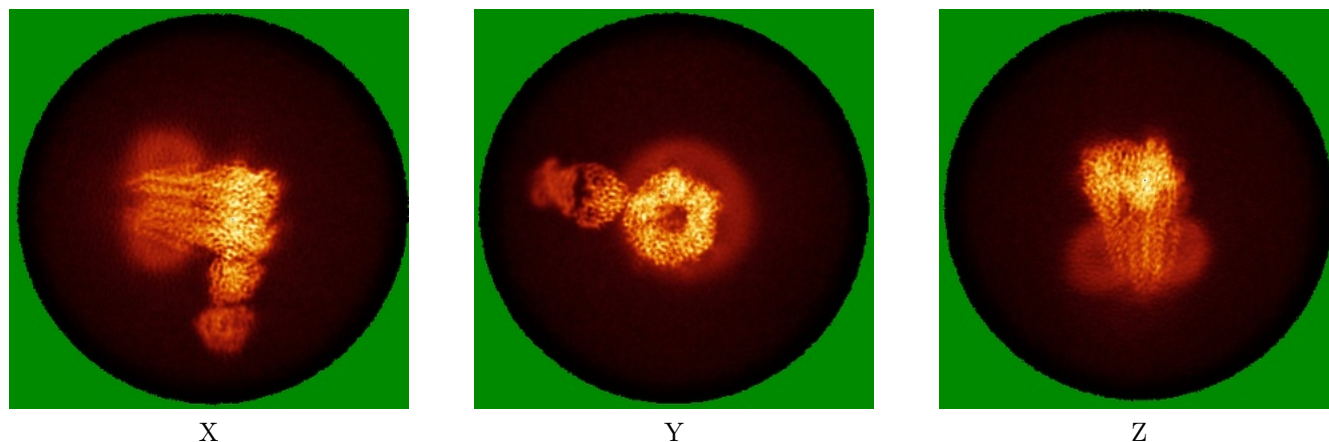


Z Index: 0

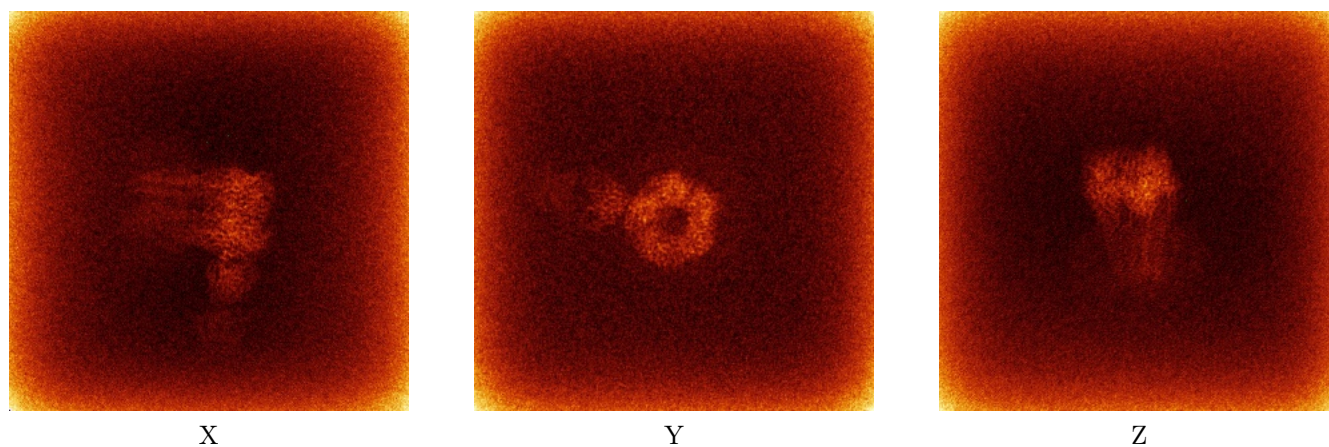
The images above show the largest variance slices of the map in three orthogonal directions.

6.4 Orthogonal standard-deviation projections (False-color) [i](#)

6.4.1 Primary map



6.4.2 Raw map



The images above show the map standard deviation projections with false color in three orthogonal directions. Minimum values are shown in green, max in blue, and dark to light orange shades represent small to large values respectively.

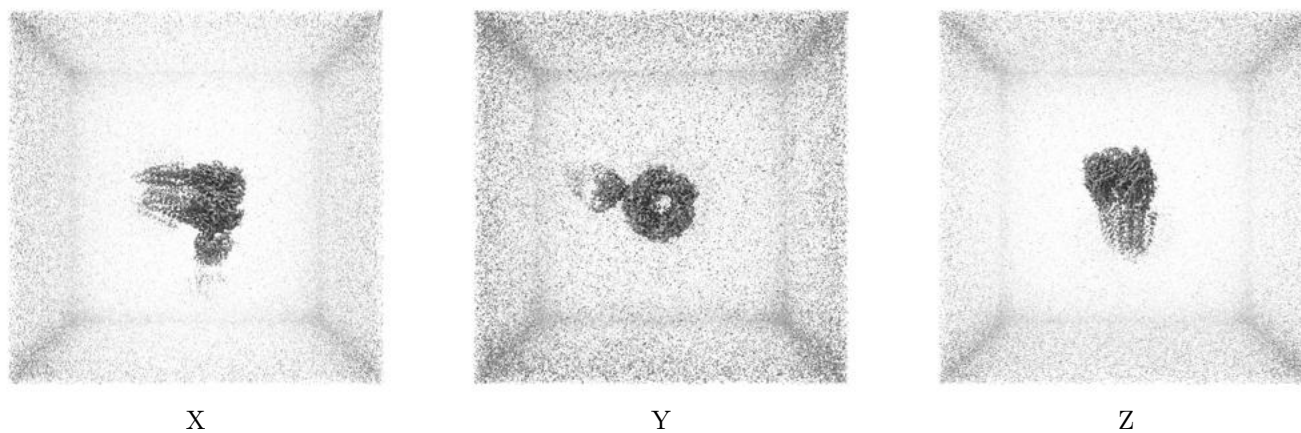
6.5 Orthogonal surface views [i](#)

6.5.1 Primary map



The images above show the 3D surface view of the map at the recommended contour level 0.075. These images, in conjunction with the slice images, may facilitate assessment of whether an appropriate contour level has been provided.

6.5.2 Raw map



These images show the 3D surface of the raw map. The raw map's contour level was selected so that its surface encloses the same volume as the primary map does at its recommended contour level.

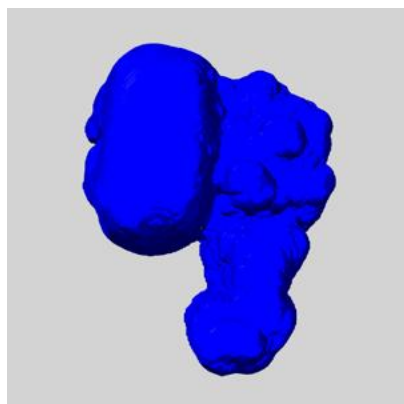
6.6 Mask visualisation [i](#)

This section shows the 3D surface view of the primary map at 50% transparency overlaid with the specified mask at 0% transparency

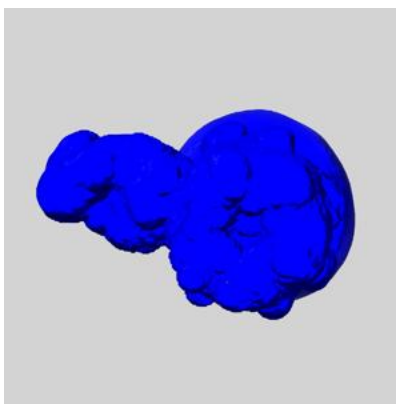
A mask typically either:

- Encompasses the whole structure
- Separates out a domain, a functional unit, a monomer or an area of interest from a larger structure

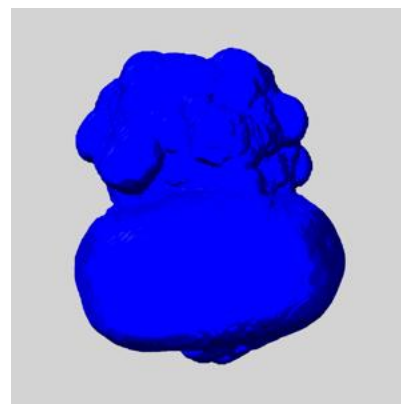
6.6.1 emd_29743_msk_1.map [i](#)



X



Y

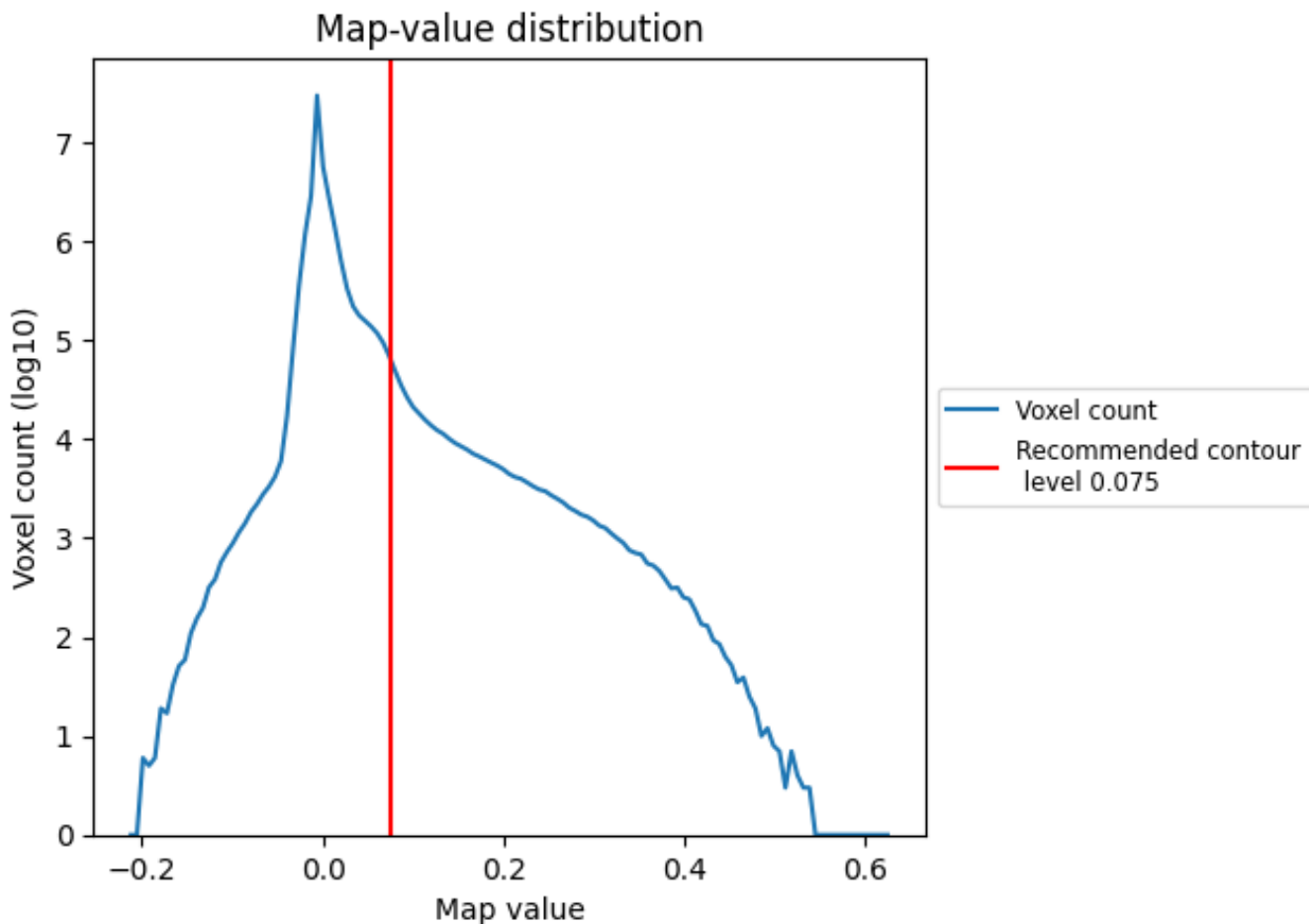


Z

7 Map analysis [i](#)

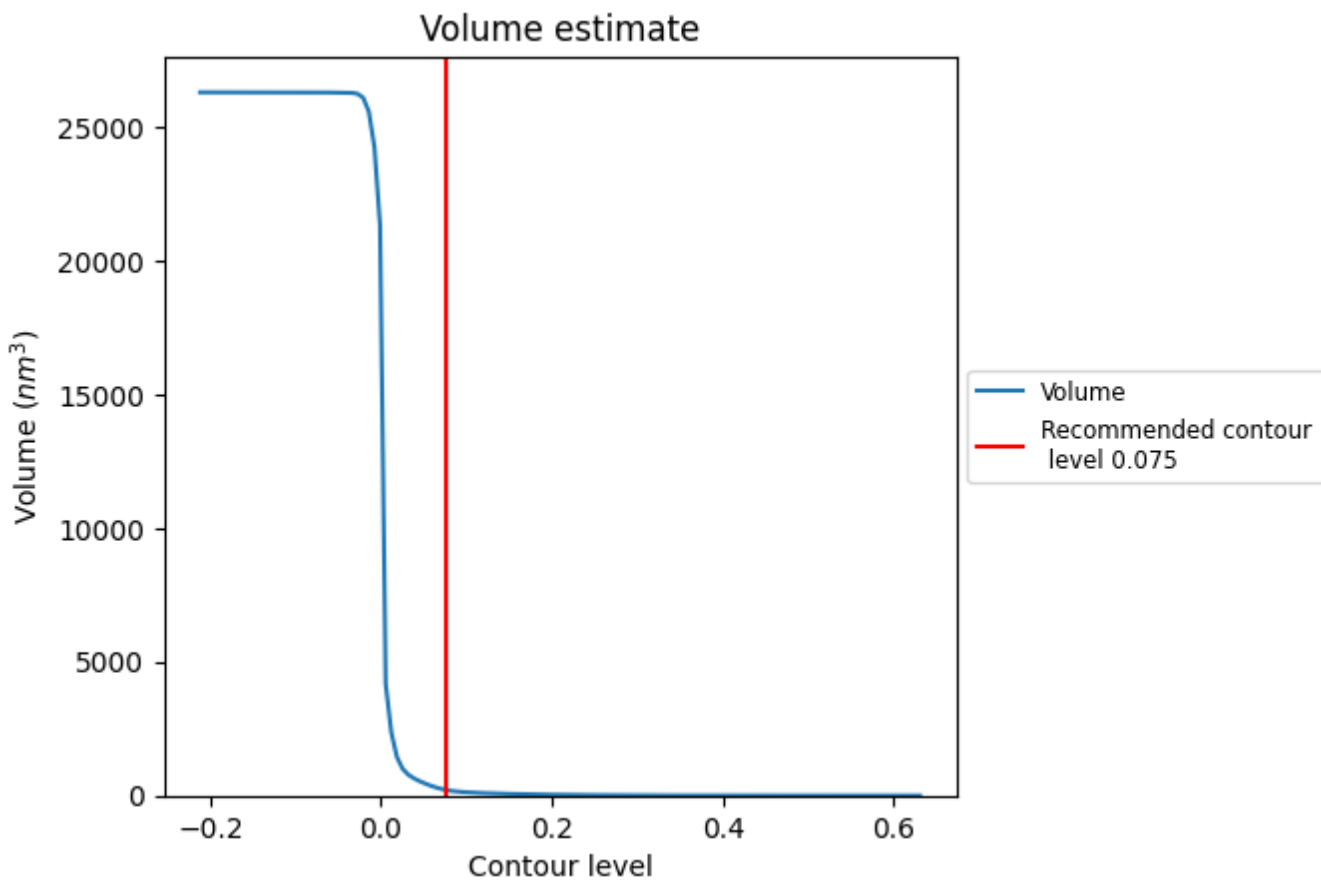
This section contains the results of statistical analysis of the map.

7.1 Map-value distribution [i](#)



The map-value distribution is plotted in 128 intervals along the x-axis. The y-axis is logarithmic. A spike in this graph at zero usually indicates that the volume has been masked.

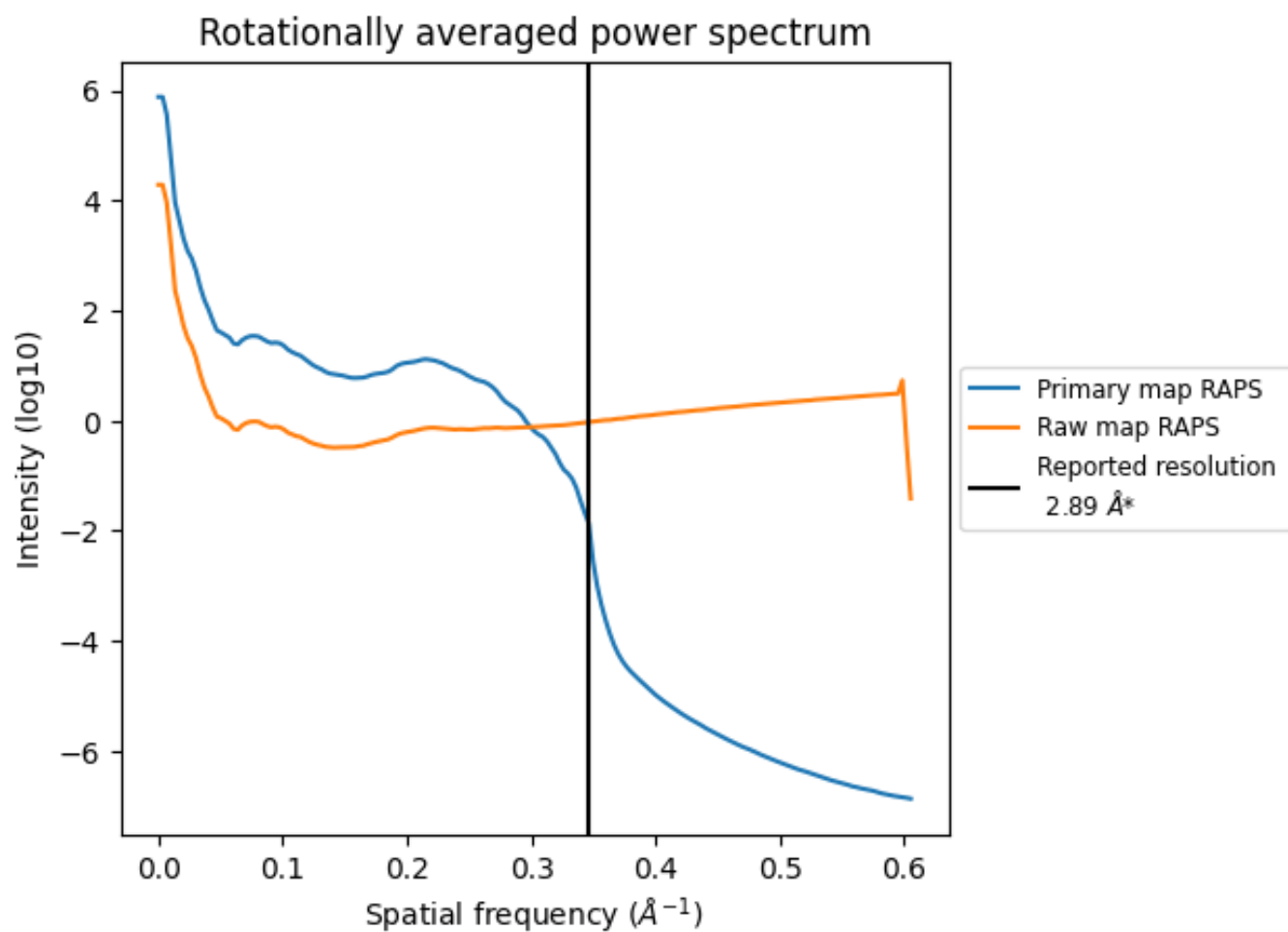
7.2 Volume estimate [i](#)



The volume at the recommended contour level is 217 nm^3 ; this corresponds to an approximate mass of 196 kDa.

The volume estimate graph shows how the enclosed volume varies with the contour level. The recommended contour level is shown as a vertical line and the intersection between the line and the curve gives the volume of the enclosed surface at the given level.

7.3 Rotationally averaged power spectrum i

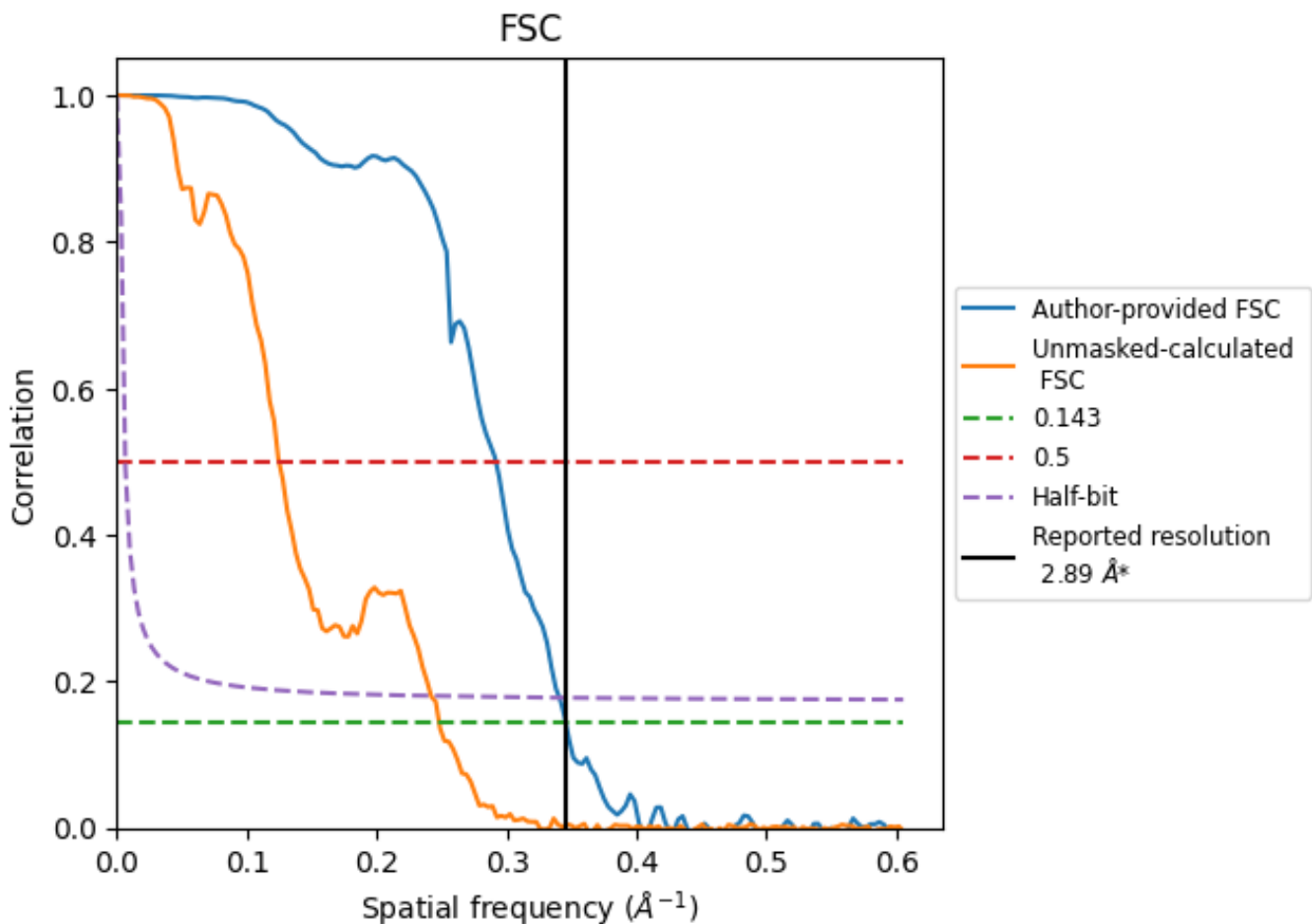


*Reported resolution corresponds to spatial frequency of 0.346 Å⁻¹

8 Fourier-Shell correlation [i](#)

Fourier-Shell Correlation (FSC) is the most commonly used method to estimate the resolution of single-particle and subtomogram-averaged maps. The shape of the curve depends on the imposed symmetry, mask and whether or not the two 3D reconstructions used were processed from a common reference. The reported resolution is shown as a black line. A curve is displayed for the half-bit criterion in addition to lines showing the 0.143 gold standard cut-off and 0.5 cut-off.

8.1 FSC [i](#)



*Reported resolution corresponds to spatial frequency of 0.346 Å⁻¹

8.2 Resolution estimates [i](#)

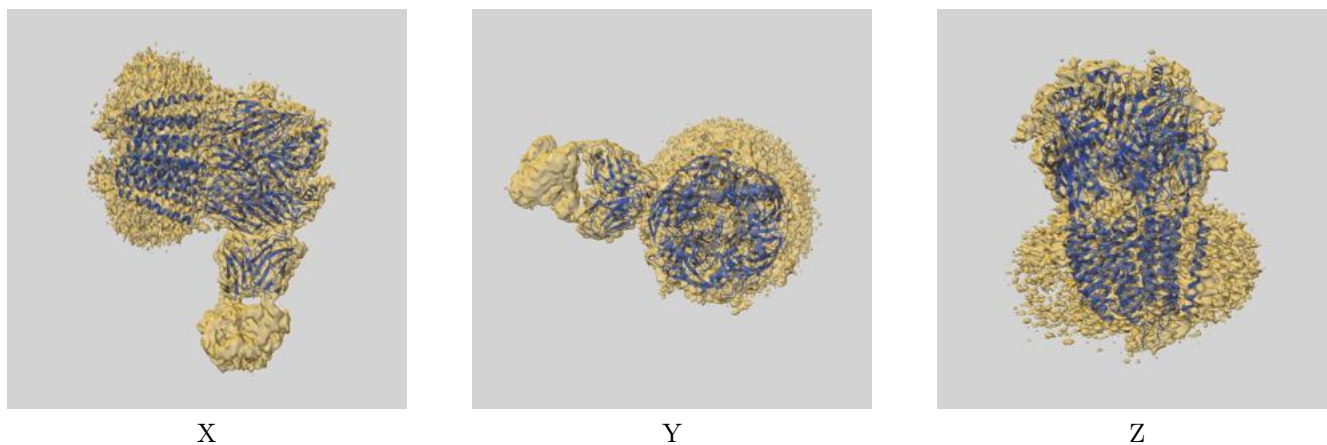
Resolution estimate (Å)	Estimation criterion (FSC cut-off)		
	0.143	0.5	Half-bit
Reported by author	2.89	-	-
Author-provided FSC curve	2.89	3.43	2.94
Unmasked-calculated*	4.03	8.01	4.13

*Resolution estimate based on FSC curve calculated by comparison of deposited half-maps. The value from deposited half-maps intersecting FSC 0.143 CUT-OFF 4.03 differs from the reported value 2.89 by more than 10 %

9 Map-model fit [i](#)

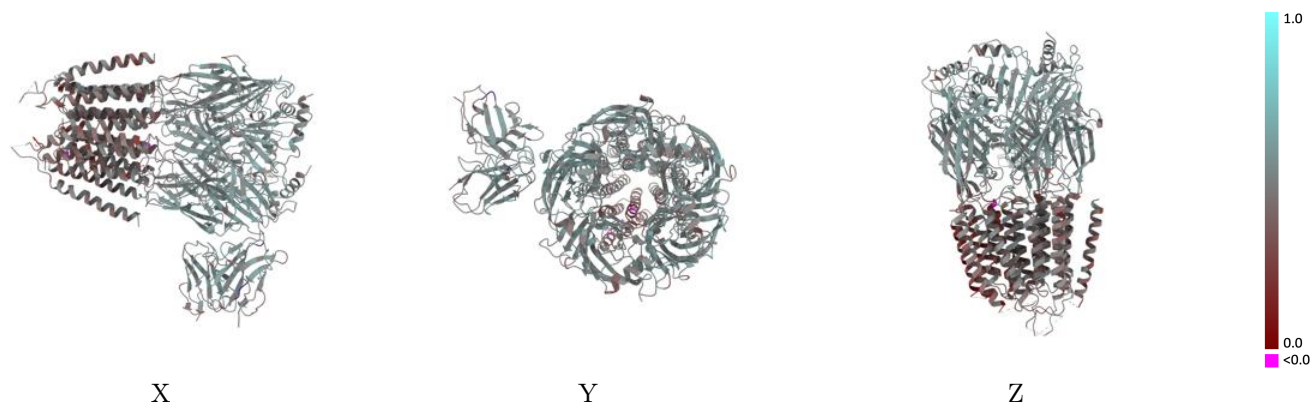
This section contains information regarding the fit between EMDB map EMD-29743 and PDB model 8G5H. Per-residue inclusion information can be found in section 3 on page 9.

9.1 Map-model overlay [i](#)



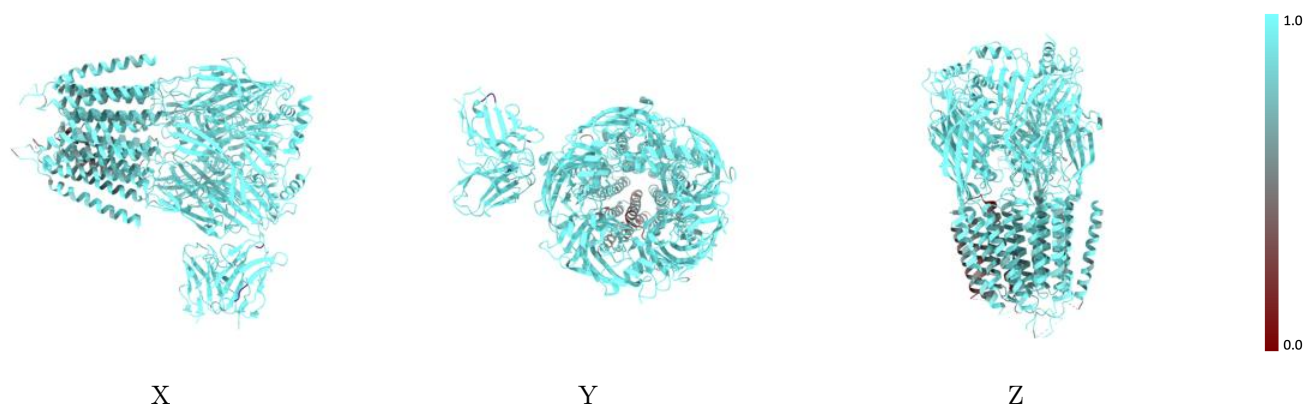
The images above show the 3D surface view of the map at the recommended contour level 0.075 at 50% transparency in yellow overlaid with a ribbon representation of the model coloured in blue. These images allow for the visual assessment of the quality of fit between the atomic model and the map.

9.2 Q-score mapped to coordinate model [i](#)



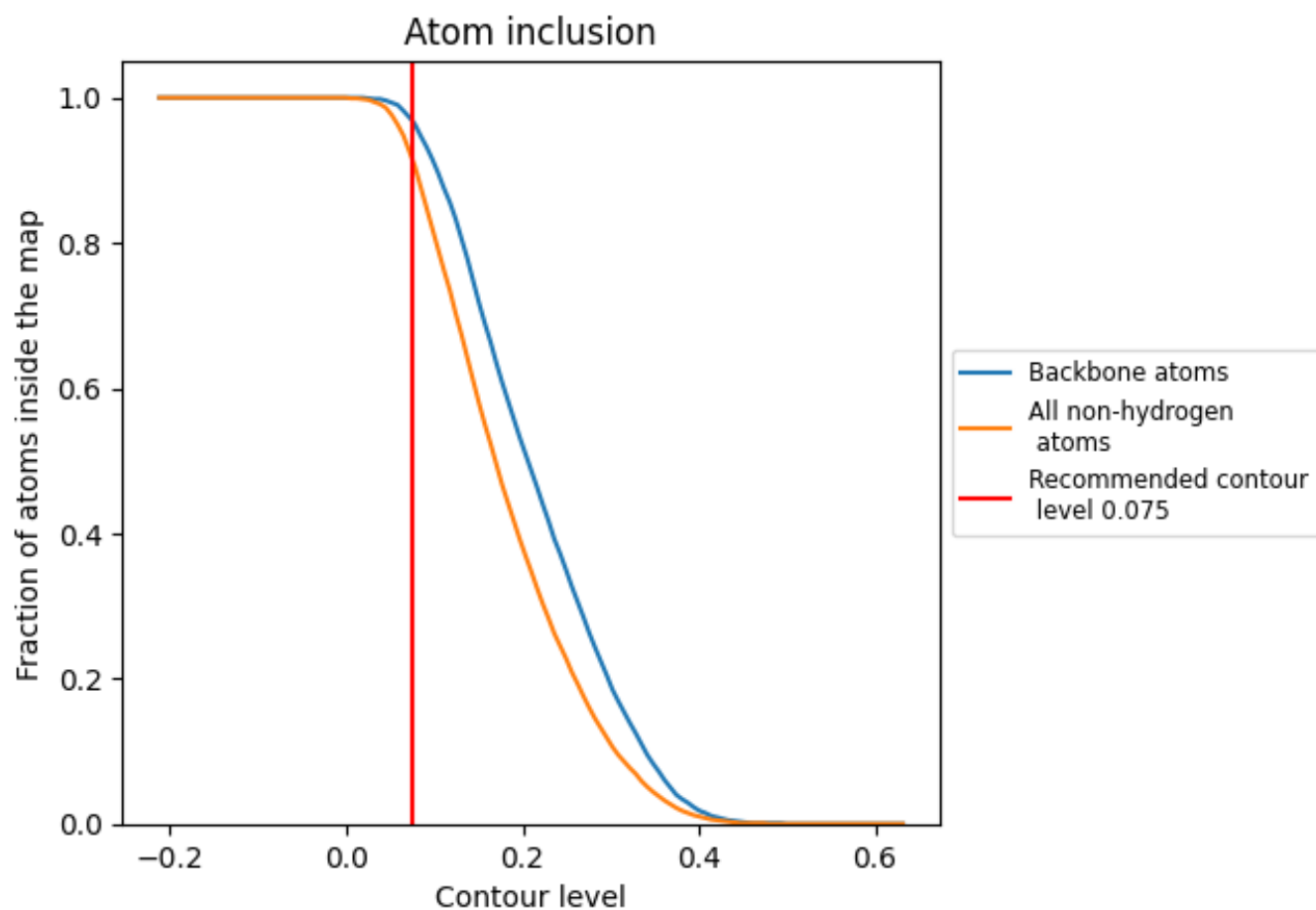
The images above show the model with each residue coloured according to its Q-score. This shows their resolvability in the map with higher Q-score values reflecting better resolvability. Please note: Q-score is calculating the resolvability of atoms, and thus high values are only expected at resolutions at which atoms can be resolved. Low Q-score values may therefore be expected for many entries.

9.3 Atom inclusion mapped to coordinate model [i](#)



The images above show the model with each residue coloured according to its atom inclusion. This shows to what extent they are inside the map at the recommended contour level (0.075).





























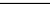
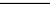
9.4 Atom inclusion [i](#)



At the recommended contour level, 97% of all backbone atoms, 92% of all non-hydrogen atoms, are inside the map.

9.5 Map-model fit summary

The table lists the average atom inclusion at the recommended contour level (0.075) and Q-score for the entire model and for each chain.

Chain	Atom inclusion	Q-score
All	 0.9150	 0.4770
A	 0.9310	 0.4820
B	 0.9360	 0.4900
C	 0.9370	 0.5000
D	 0.8180	 0.4130
E	 0.9370	 0.4870
F	 0.8690	 0.4700
G	 0.5740	 0.3700
H	 0.8690	 0.3870
I	 0.9020	 0.4610
J	 0.9650	 0.5050
K	 0.9680	 0.5170
L	 0.6560	 0.3530
M	 0.8850	 0.4120
N	 0.5900	 0.4470

