



Full wwPDB X-ray Structure Validation Report ⓘ

Aug 6, 2020 – 01:54 PM BST

PDB ID : 1G6I
Title : Crystal structure of the yeast alpha-1,2-mannosidase with bound 1-deoxymanojirimycin at 1.59 Å resolution
Authors : Herscovics, A.; Lipari, F.; Sleno, B.; Romera, P.A.; Vallee, F.; Yip, P.; Howell, P.A.
Deposited on : 2000-11-06
Resolution : 1.59 Å(reported)

This is a Full wwPDB X-ray Structure Validation Report for a publicly released PDB entry.

We welcome your comments at validation@mail.wwpdb.org

A user guide is available at

<https://www.wwpdb.org/validation/2017/XrayValidationReportHelp>

with specific help available everywhere you see the ⓘ symbol.

The following versions of software and data (see [references ⓘ](#)) were used in the production of this report:

MolProbity : 4.02b-467
Mogul : 1.8.5 (274361), CSD as541be (2020)
Xtrriage (Phenix) : **NOT EXECUTED**
EDS : **NOT EXECUTED**
Percentile statistics : 20191225.v01 (using entries in the PDB archive December 25th 2019)
Ideal geometry (proteins) : Engh & Huber (2001)
Ideal geometry (DNA, RNA) : Parkinson et al. (1996)
Validation Pipeline (wwPDB-VP) : 2.13.1

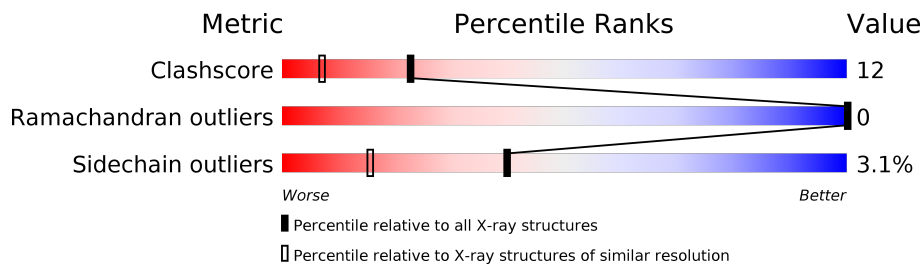
1 Overall quality at a glance

The following experimental techniques were used to determine the structure:

X-RAY DIFFRACTION

The reported resolution of this entry is 1.59 Å.

Percentile scores (ranging between 0-100) for global validation metrics of the entry are shown in the following graphic. The table shows the number of entries on which the scores are based.



Metric	Whole archive (#Entries)	Similar resolution (#Entries, resolution range(Å))
Clashscore	141614	3665 (1.60-1.60)
Ramachandran outliers	138981	3564 (1.60-1.60)
Sidechain outliers	138945	3563 (1.60-1.60)

The table below summarises the geometric issues observed across the polymeric chains and their fit to the electron density. The red, orange, yellow and green segments on the lower bar indicate the fraction of residues that contain outliers for ≥ 3 , 2, 1 and 0 types of geometric quality criteria respectively. A grey segment represents the fraction of residues that are not modelled. The numeric value for each fraction is indicated below the corresponding segment, with a dot representing fractions $\leq 5\%$

Note EDS was not executed.

Mol	Chain	Length	Quality of chain
1	A	545	 75% 17% • 6%
2	B	7	 71% 29%
3	C	5	 80% 20%

2 Entry composition [i](#)

There are 7 unique types of molecules in this entry. The entry contains 4691 atoms, of which 0 are hydrogens and 0 are deuteriums.

In the tables below, the ZeroOcc column contains the number of atoms modelled with zero occupancy, the AltConf column contains the number of residues with at least one atom in alternate conformation and the Trace column contains the number of residues modelled with at most 2 atoms.

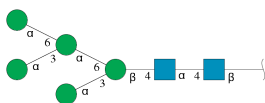
- Molecule 1 is a protein called CLASS I ALPHA-1,2-MANNOSIDASE.

Mol	Chain	Residues	Atoms					ZeroOcc	AltConf	Trace
			Total	C	N	O	S			
1	A	510	4106	2627	672	787	20	0	0	0

There are 7 discrepancies between the modelled and reference sequences:

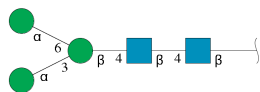
Chain	Residue	Modelled	Actual	Comment	Reference
A	38	ASP	-	insertion	UNP P32906
A	328	GLN	HIS	conflict	UNP P32906
A	?	-	LEU	deletion	UNP P32906
A	?	-	SER	deletion	UNP P32906
A	?	-	LEU	deletion	UNP P32906
A	?	-	GLU	deletion	UNP P32906
A	?	-	ARG	deletion	UNP P32906

- Molecule 2 is an oligosaccharide called alpha-D-mannopyranose-(1-3)-[alpha-D-mannopyranose-(1-6)]alpha-D-mannopyranose-(1-6)-[alpha-D-mannopyranose-(1-3)]beta-D-mannopyranose-(1-4)-2-acetamido-2-deoxy-alpha-D-glucopyranose-(1-4)-2-acetamido-2-deoxy-beta-D-glucopyranose.



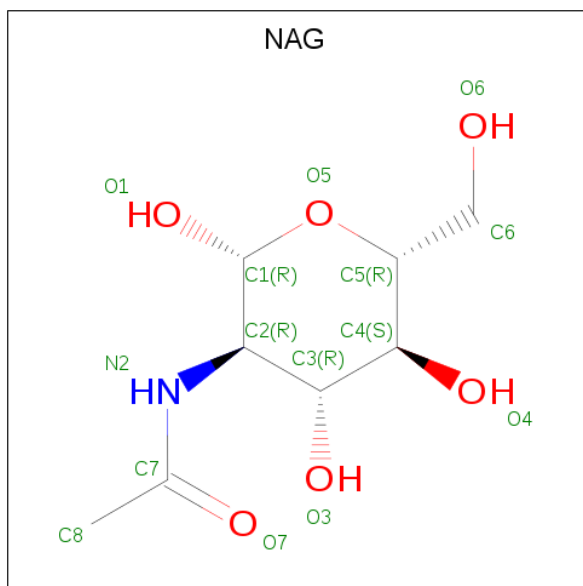
Mol	Chain	Residues	Atoms				ZeroOcc	AltConf	Trace
			Total	C	N	O			
2	B	7	83	46	2	35	0	0	0

- Molecule 3 is an oligosaccharide called alpha-D-mannopyranose-(1-3)-[alpha-D-mannopyranose-(1-6)]beta-D-mannopyranose-(1-4)-2-acetamido-2-deoxy-beta-D-glucopyranose-(1-4)-2-acetamido-2-deoxy-beta-D-glucopyranose.



Mol	Chain	Residues	Atoms			ZeroOcc	AltConf	Trace	
			Total	C	N				O
3	C	5	61	34	2	25	0	0	0

- Molecule 4 is 2-acetamido-2-deoxy-beta-D-glucopyranose (three-letter code: NAG) (formula: $C_8H_{15}NO_6$).

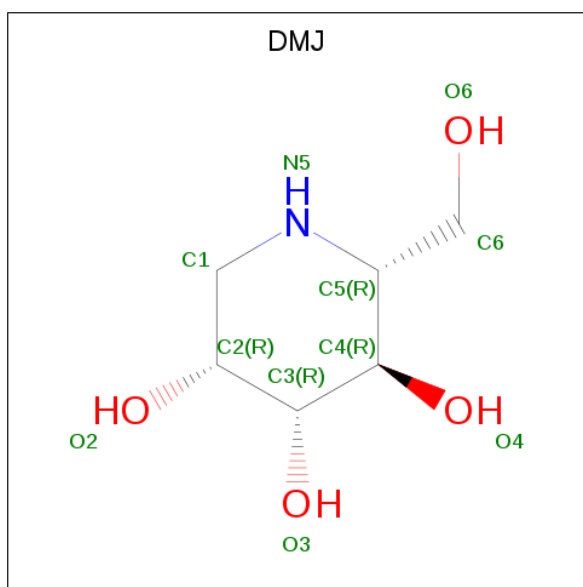


Mol	Chain	Residues	Atoms			ZeroOcc	AltConf	
			Total	C	N			O
4	A	1	14	8	1	5	0	0

- Molecule 5 is CALCIUM ION (three-letter code: CA) (formula: Ca).

Mol	Chain	Residues	Atoms		ZeroOcc	AltConf
			Total	Ca		
5	A	1	1	1	0	0

- Molecule 6 is 1-DEOXYMANNOJIRIMYCIN (three-letter code: DMJ) (formula: $C_6H_{13}NO_4$).



Mol	Chain	Residues	Atoms				ZeroOcc	AltConf
			Total	C	N	O		
6	A	1	11	6	1	4	0	0

- Molecule 7 is water.

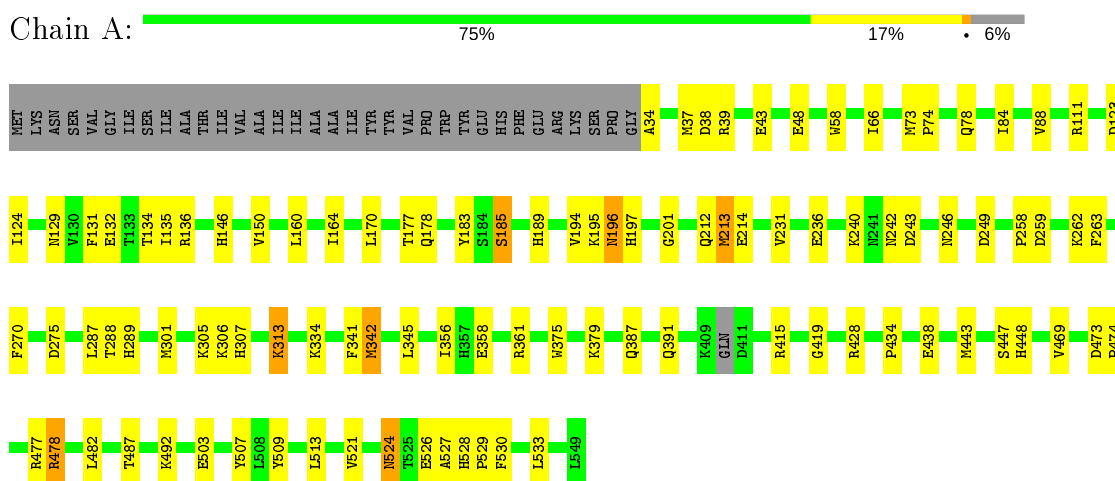
Mol	Chain	Residues	Atoms		ZeroOcc	AltConf
			Total	O		
7	A	415	415	415	0	0

3 Residue-property plots

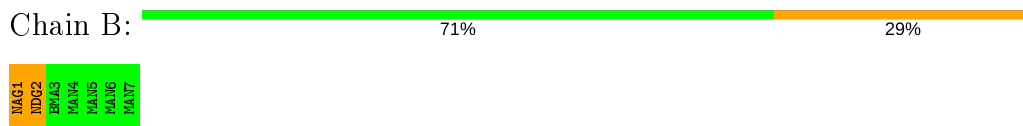
These plots are drawn for all protein, RNA, DNA and oligosaccharide chains in the entry. The first graphic for a chain summarises the proportions of the various outlier classes displayed in the second graphic. The second graphic shows the sequence view annotated by issues in geometry. Residues are color-coded according to the number of geometric quality criteria for which they contain at least one outlier: green = 0, yellow = 1, orange = 2 and red = 3 or more. Stretches of 2 or more consecutive residues without any outlier are shown as a green connector. Residues present in the sample, but not in the model, are shown in grey.

Note EDS was not executed.

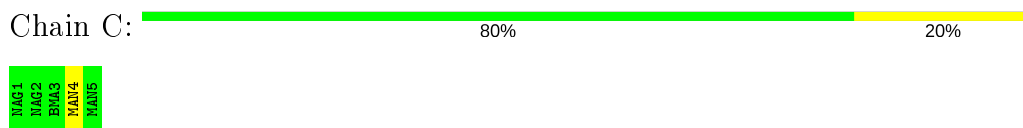
- Molecule 1: CLASS I ALPHA-1,2-MANNOSIDASE



- Molecule 2: alpha-D-mannopyranose-(1-3)-[alpha-D-mannopyranose-(1-6)]alpha-D-mannopyranose-(1-6)-[alpha-D-mannopyranose-(1-3)]beta-D-mannopyranose-(1-4)-2-acetamido-2-deoxy-alpha-D-glucopyranose-(1-4)-2-acetamido-2-deoxy-beta-D-glucopyranose



- Molecule 3: alpha-D-mannopyranose-(1-3)-[alpha-D-mannopyranose-(1-6)]beta-D-mannopyranose-(1-4)-2-acetamido-2-deoxy-beta-D-glucopyranose-(1-4)-2-acetamido-2-deoxy-beta-D-glucopyranose



4 Data and refinement statistics

Xtrriage (Phenix) and EDS were not executed - this section is therefore incomplete.

Property	Value	Source
Space group	P 31 2 1	Depositor
Cell constants a, b, c, α , β , γ	89.05Å 89.05Å 153.14Å 90.00° 90.00° 120.00°	Depositor
Resolution (Å)	33.56 – 1.59	Depositor
% Data completeness (in resolution range)	9.0 (33.56-1.59)	Depositor
R_{merge}	0.06	Depositor
R_{sym}	(Not available)	Depositor
Refinement program	CNS	Depositor
R, R_{free}	0.230 , 0.253	Depositor
Estimated twinning fraction	No twinning to report.	Xtrriage
Total number of atoms	4691	wwPDB-VP
Average B, all atoms (Å ²)	27.0	wwPDB-VP

5 Model quality [i](#)

5.1 Standard geometry [i](#)

Bond lengths and bond angles in the following residue types are not validated in this section: BMA, NAG, DMJ, NDG, CA, MAN

The Z score for a bond length (or angle) is the number of standard deviations the observed value is removed from the expected value. A bond length (or angle) with $|Z| > 5$ is considered an outlier worth inspection. RMSZ is the root-mean-square of all Z scores of the bond lengths (or angles).

Mol	Chain	Bond lengths		Bond angles	
		RMSZ	# Z >5	RMSZ	# Z >5
1	A	0.34	0/4214	0.61	0/5713

There are no bond length outliers.

There are no bond angle outliers.

There are no chirality outliers.

There are no planarity outliers.

5.2 Too-close contacts [i](#)

In the following table, the Non-H and H(model) columns list the number of non-hydrogen atoms and hydrogen atoms in the chain respectively. The H(added) column lists the number of hydrogen atoms added and optimized by MolProbity. The Clashes column lists the number of clashes within the asymmetric unit, whereas Symm-Clashes lists symmetry related clashes.

Mol	Chain	Non-H	H(model)	H(added)	Clashes	Symm-Clashes
1	A	4106	0	3902	95	0
2	B	83	0	69	1	0
3	C	61	0	52	0	0
4	A	14	0	13	0	0
5	A	1	0	0	0	0
6	A	11	0	12	0	0
7	A	415	0	0	6	0
All	All	4691	0	4048	96	0

The all-atom clashscore is defined as the number of clashes found per 1000 atoms (including hydrogen atoms). The all-atom clashscore for this structure is 12.

All (96) close contacts within the same asymmetric unit are listed below, sorted by their clash magnitude.

Atom-1	Atom-2	Interatomic distance (Å)	Clash overlap (Å)
1:A:469:VAL:HB	1:A:478:ARG:HD2	1.53	0.89
1:A:342:MET:CE	1:A:342:MET:HA	2.05	0.87
1:A:129:ASN:HD22	1:A:132:GLU:H	1.25	0.85
1:A:428:ARG:HH21	1:A:487:THR:HG23	1.43	0.81
1:A:342:MET:HE3	1:A:342:MET:HA	1.62	0.80
1:A:242:ASN:HD21	1:A:263:PHE:H	1.34	0.75
1:A:342:MET:HE2	1:A:345:LEU:HB3	1.67	0.75
1:A:213:MET:HG2	1:A:530:PHE:CD1	2.22	0.74
1:A:134:THR:HG22	1:A:214:GLU:OE1	1.89	0.73
1:A:342:MET:HE1	1:A:345:LEU:HD22	1.70	0.71
1:A:39:ARG:HG2	7:A:1223:HOH:O	1.93	0.69
1:A:177:THR:HG21	1:A:259:ASP:HA	1.75	0.69
1:A:524:ASN:ND2	1:A:526:GLU:H	1.91	0.67
1:A:48:GLU:OE2	1:A:477:ARG:HD2	1.94	0.67
1:A:135:ILE:HG13	1:A:136:ARG:HG3	1.77	0.66
1:A:111:ARG:HG2	1:A:111:ARG:HH21	1.60	0.66
1:A:242:ASN:ND2	1:A:263:PHE:H	1.94	0.66
1:A:387:GLN:HE21	1:A:391:GLN:HE21	1.44	0.64
1:A:129:ASN:HD21	1:A:131:PHE:HB3	1.64	0.63
1:A:177:THR:HG22	1:A:178:GLN:N	2.14	0.62
1:A:183:TYR:CD1	1:A:195:LYS:HG2	2.35	0.62
1:A:177:THR:CG2	1:A:259:ASP:HA	2.29	0.62
1:A:132:GLU:OE1	1:A:136:ARG:HD2	1.99	0.61
1:A:196:ASN:HD22	1:A:197:HIS:N	1.98	0.61
1:A:39:ARG:HH21	1:A:39:ARG:HG2	1.65	0.61
1:A:428:ARG:HH21	1:A:487:THR:CG2	2.12	0.61
1:A:358:GLU:HG3	7:A:1332:HOH:O	2.01	0.61
1:A:39:ARG:HG3	1:A:509:TYR:CE1	2.36	0.60
1:A:342:MET:HE1	1:A:345:LEU:CD2	2.31	0.60
1:A:129:ASN:ND2	1:A:132:GLU:H	1.97	0.58
1:A:306:LYS:HD2	1:A:307:HIS:CE1	2.38	0.58
1:A:289:HIS:HE1	1:A:533:LEU:O	1.86	0.58
1:A:270:PHE:O	1:A:275:ASP:HB3	2.04	0.57
1:A:177:THR:HG21	1:A:258:PRO:O	2.07	0.55
1:A:275:ASP:HB2	7:A:1255:HOH:O	2.05	0.54
1:A:287:LEU:HD12	1:A:288:THR:HG23	1.90	0.54
1:A:342:MET:HA	1:A:342:MET:HE2	1.86	0.53
1:A:524:ASN:HD22	1:A:528:HIS:H	1.55	0.52
1:A:242:ASN:HD21	1:A:262:LYS:HA	1.73	0.52
1:A:195:LYS:HE2	1:A:201:GLY:O	2.09	0.52
1:A:183:TYR:HB3	1:A:195:LYS:HA	1.91	0.52
1:A:78:GLN:NE2	1:A:124:ILE:HG23	2.25	0.52

Continued on next page...

Continued from previous page...

Atom-1	Atom-2	Interatomic distance (Å)	Clash overlap (Å)
1:A:524:ASN:ND2	1:A:528:HIS:H	2.09	0.51
1:A:387:GLN:NE2	1:A:391:GLN:HE21	2.08	0.51
1:A:160:LEU:C	1:A:160:LEU:HD13	2.31	0.51
1:A:361:ARG:HG2	1:A:361:ARG:HH11	1.76	0.51
1:A:78:GLN:HG3	7:A:1357:HOH:O	2.10	0.51
1:A:213:MET:HG2	1:A:530:PHE:CE1	2.45	0.51
1:A:306:LYS:HD3	1:A:306:LYS:O	2.12	0.50
1:A:177:THR:HG22	1:A:178:GLN:H	1.75	0.50
1:A:236:GLU:HA	7:A:1218:HOH:O	2.12	0.50
1:A:160:LEU:HD11	1:A:164:ILE:HD11	1.94	0.50
1:A:123:ASP:OD2	1:A:189:HIS:HD2	1.94	0.49
1:A:39:ARG:HG3	1:A:509:TYR:HE1	1.76	0.49
1:A:242:ASN:HD21	1:A:263:PHE:N	2.07	0.49
1:A:287:LEU:HD12	1:A:288:THR:CG2	2.43	0.49
1:A:185:SER:HB2	1:A:194:VAL:CG1	2.42	0.48
1:A:469:VAL:HB	1:A:478:ARG:CD	2.37	0.48
1:A:415:ARG:HE	1:A:419:GLY:CA	2.25	0.48
1:A:39:ARG:O	1:A:43:GLU:HG3	2.14	0.48
1:A:503:GLU:HG2	1:A:527:ALA:HB3	1.96	0.47
1:A:356:ILE:HG21	1:A:375:TRP:CZ2	2.49	0.47
1:A:289:HIS:CE1	1:A:533:LEU:O	2.64	0.47
1:A:379:LYS:HG2	1:A:443:MET:CE	2.45	0.47
1:A:249:ASP:OD2	1:A:307:HIS:HE1	1.97	0.47
1:A:146:HIS:O	1:A:150:VAL:HG12	2.15	0.47
2:B:1:NAG:H62	2:B:2:NDG:HA	1.80	0.46
1:A:342:MET:CA	1:A:342:MET:HE3	2.39	0.45
1:A:313:LYS:N	1:A:313:LYS:HD2	2.32	0.45
1:A:146:HIS:HD2	7:A:1439:HOH:O	2.00	0.45
1:A:341:PHE:CZ	1:A:342:MET:CE	2.99	0.45
1:A:212:GLN:NE2	1:A:231:VAL:HG22	2.33	0.44
1:A:196:ASN:HD22	1:A:197:HIS:H	1.65	0.44
1:A:521:VAL:HG21	1:A:529:PRO:HB2	2.00	0.44
1:A:342:MET:CE	1:A:345:LEU:CD2	2.95	0.44
1:A:287:LEU:HD13	1:A:287:LEU:C	2.39	0.43
1:A:301:MET:O	1:A:305:LYS:HG3	2.18	0.43
1:A:341:PHE:CE1	1:A:342:MET:CE	3.01	0.43
1:A:341:PHE:CE1	1:A:342:MET:HE1	2.53	0.43
1:A:342:MET:HE2	1:A:345:LEU:CB	2.43	0.43
1:A:177:THR:CG2	1:A:178:GLN:N	2.80	0.43
1:A:243:ASP:OD2	1:A:246:ASN:HB3	2.19	0.43
1:A:39:ARG:NH2	1:A:39:ARG:HG2	2.32	0.43

Continued on next page...

Continued from previous page...

Atom-1	Atom-2	Interatomic distance (Å)	Clash overlap (Å)
1:A:379:LYS:HG2	1:A:443:MET:HE1	2.01	0.43
1:A:438:GLU:HG3	1:A:507:TYR:CE1	2.54	0.43
1:A:183:TYR:CG	1:A:195:LYS:HG2	2.53	0.42
1:A:415:ARG:HE	1:A:419:GLY:HA3	1.83	0.42
1:A:58:TRP:NE1	1:A:111:ARG:NH2	2.67	0.42
1:A:66:ILE:HD11	1:A:492:LYS:HB3	2.01	0.42
1:A:447:SER:O	1:A:448:HIS:HB2	2.20	0.41
1:A:185:SER:HB2	1:A:194:VAL:HG13	2.03	0.41
1:A:306:LYS:HD3	1:A:306:LYS:C	2.40	0.41
1:A:73:MET:HB2	1:A:74:PRO:HD3	2.02	0.41
1:A:84:ILE:O	1:A:88:VAL:HG23	2.21	0.41
1:A:34:ALA:HB3	1:A:37:MET:HB3	2.02	0.40
1:A:473:ASP:HA	1:A:474:PRO:HD2	1.96	0.40

There are no symmetry-related clashes.

5.3 Torsion angles [i](#)

5.3.1 Protein backbone [i](#)

In the following table, the Percentiles column shows the percent Ramachandran outliers of the chain as a percentile score with respect to all X-ray entries followed by that with respect to entries of similar resolution.

The Analysed column shows the number of residues for which the backbone conformation was analysed, and the total number of residues.

Mol	Chain	Analysed	Favoured	Allowed	Outliers	Percentiles
1	A	506/545 (93%)	498 (98%)	8 (2%)	0	100 100

There are no Ramachandran outliers to report.

5.3.2 Protein sidechains [i](#)

In the following table, the Percentiles column shows the percent sidechain outliers of the chain as a percentile score with respect to all X-ray entries followed by that with respect to entries of similar resolution.

The Analysed column shows the number of residues for which the sidechain conformation was analysed, and the total number of residues.

Mol	Chain	Analysed	Rotameric	Outliers	Percentiles
1	A	445/482 (92%)	431 (97%)	14 (3%)	40 15

All (14) residues with a non-rotameric sidechain are listed below:

Mol	Chain	Res	Type
1	A	38	ASP
1	A	170	LEU
1	A	185	SER
1	A	196	ASN
1	A	213	MET
1	A	240	LYS
1	A	313	LYS
1	A	334	LYS
1	A	342	MET
1	A	434	PRO
1	A	478	ARG
1	A	482	LEU
1	A	513	LEU
1	A	524	ASN

Some sidechains can be flipped to improve hydrogen bonding and reduce clashes. All (15) such sidechains are listed below:

Mol	Chain	Res	Type
1	A	78	GLN
1	A	129	ASN
1	A	146	HIS
1	A	161	ASN
1	A	178	GLN
1	A	189	HIS
1	A	196	ASN
1	A	242	ASN
1	A	246	ASN
1	A	289	HIS
1	A	307	HIS
1	A	311	GLN
1	A	337	HIS
1	A	387	GLN
1	A	524	ASN

5.3.3 RNA [i](#)

There are no RNA molecules in this entry.

5.4 Non-standard residues in protein, DNA, RNA chains [i](#)

There are no non-standard protein/DNA/RNA residues in this entry.

5.5 Carbohydrates [i](#)

12 monosaccharides are modelled in this entry.

In the following table, the Counts columns list the number of bonds (or angles) for which Mogul statistics could be retrieved, the number of bonds (or angles) that are observed in the model and the number of bonds (or angles) that are defined in the Chemical Component Dictionary. The Link column lists molecule types, if any, to which the group is linked. The Z score for a bond length (or angle) is the number of standard deviations the observed value is removed from the expected value. A bond length (or angle) with $|Z| > 2$ is considered an outlier worth inspection. RMSZ is the root-mean-square of all Z scores of the bond lengths (or angles).

Mol	Type	Chain	Res	Link	Bond lengths			Bond angles		
					Counts	RMSZ	# Z > 2	Counts	RMSZ	# Z > 2
2	NAG	B	1	1,2	14,14,15	0.49	0	17,19,21	0.81	1 (5%)
2	NDG	B	2	2	14,14,15	0.62	0	17,19,21	0.71	1 (5%)
2	BMA	B	3	2	11,11,12	0.54	0	15,15,17	0.49	0
2	MAN	B	4	2	11,11,12	0.59	0	15,15,17	0.68	0
2	MAN	B	5	2	11,11,12	0.51	0	15,15,17	0.51	0
2	MAN	B	6	2	11,11,12	0.55	0	15,15,17	0.51	0
2	MAN	B	7	2	11,11,12	0.50	0	15,15,17	0.55	0
3	NAG	C	1	1,3	14,14,15	0.44	0	17,19,21	0.64	0
3	NAG	C	2	3	14,14,15	0.48	0	17,19,21	0.60	0
3	BMA	C	3	3	11,11,12	0.54	0	15,15,17	0.34	0
3	MAN	C	4	3	11,11,12	0.42	0	15,15,17	0.58	1 (6%)
3	MAN	C	5	3	11,11,12	0.46	0	15,15,17	0.58	0

In the following table, the Chirals column lists the number of chiral outliers, the number of chiral centers analysed, the number of these observed in the model and the number defined in the Chemical Component Dictionary. Similar counts are reported in the Torsion and Rings columns. '-' means no outliers of that kind were identified.

Mol	Type	Chain	Res	Link	Chirals	Torsions	Rings
2	NAG	B	1	1,2	-	2/6/23/26	0/1/1/1
2	NDG	B	2	2	-	4/6/23/26	0/1/1/1

Continued on next page...

Continued from previous page...

Mol	Type	Chain	Res	Link	Chirals	Torsions	Rings
2	BMA	B	3	2	-	0/2/19/22	0/1/1/1
2	MAN	B	4	2	-	0/2/19/22	0/1/1/1
2	MAN	B	5	2	-	0/2/19/22	0/1/1/1
2	MAN	B	6	2	-	0/2/19/22	0/1/1/1
2	MAN	B	7	2	-	2/2/19/22	1/1/1/1
3	NAG	C	1	1,3	-	3/6/23/26	0/1/1/1
3	NAG	C	2	3	-	2/6/23/26	0/1/1/1
3	BMA	C	3	3	-	0/2/19/22	0/1/1/1
3	MAN	C	4	3	-	1/2/19/22	0/1/1/1
3	MAN	C	5	3	-	2/2/19/22	0/1/1/1

There are no bond length outliers.

All (3) bond angle outliers are listed below:

Mol	Chain	Res	Type	Atoms	Z	Observed(°)	Ideal(°)
2	B	1	NAG	C2-N2-C7	-2.25	119.70	122.90
2	B	2	NDG	C2-N2-C7	-2.16	119.83	122.90
3	C	4	MAN	C1-O5-C5	2.01	114.92	112.19

There are no chirality outliers.

All (16) torsion outliers are listed below:

Mol	Chain	Res	Type	Atoms
3	C	1	NAG	C8-C7-N2-C2
3	C	1	NAG	O7-C7-N2-C2
3	C	5	MAN	O5-C5-C6-O6
3	C	5	MAN	C4-C5-C6-O6
2	B	2	NDG	O5-C5-C6-O6
2	B	1	NAG	C8-C7-N2-C2
2	B	2	NDG	C8-C7-N2-C2
2	B	7	MAN	O5-C5-C6-O6
3	C	2	NAG	O5-C5-C6-O6
3	C	2	NAG	C4-C5-C6-O6
2	B	1	NAG	O7-C7-N2-C2
2	B	2	NDG	O7-C7-N2-C2
3	C	4	MAN	O5-C5-C6-O6
3	C	1	NAG	C3-C2-N2-C7
2	B	2	NDG	C4-C5-C6-O6
2	B	7	MAN	C4-C5-C6-O6

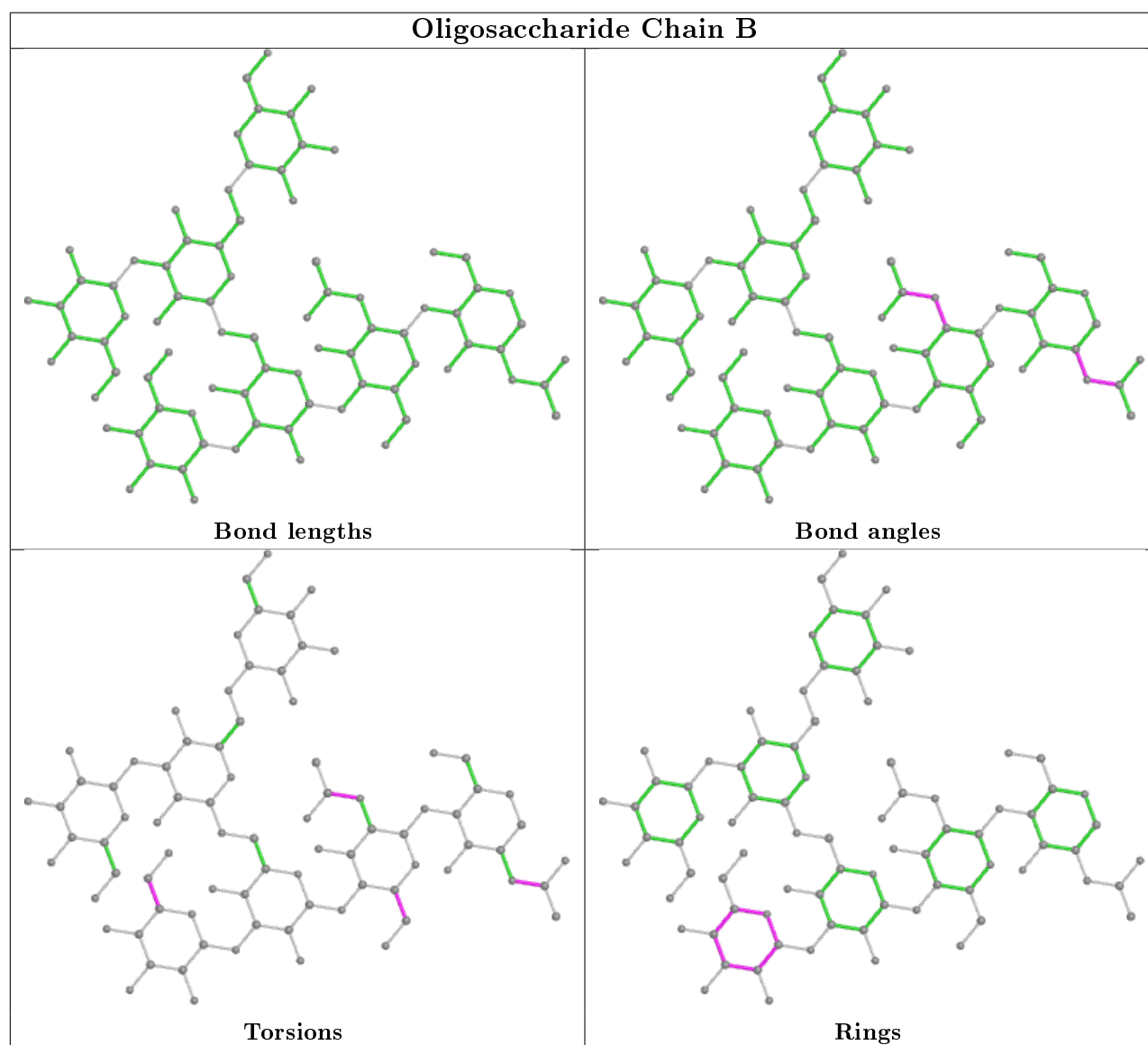
All (1) ring outliers are listed below:

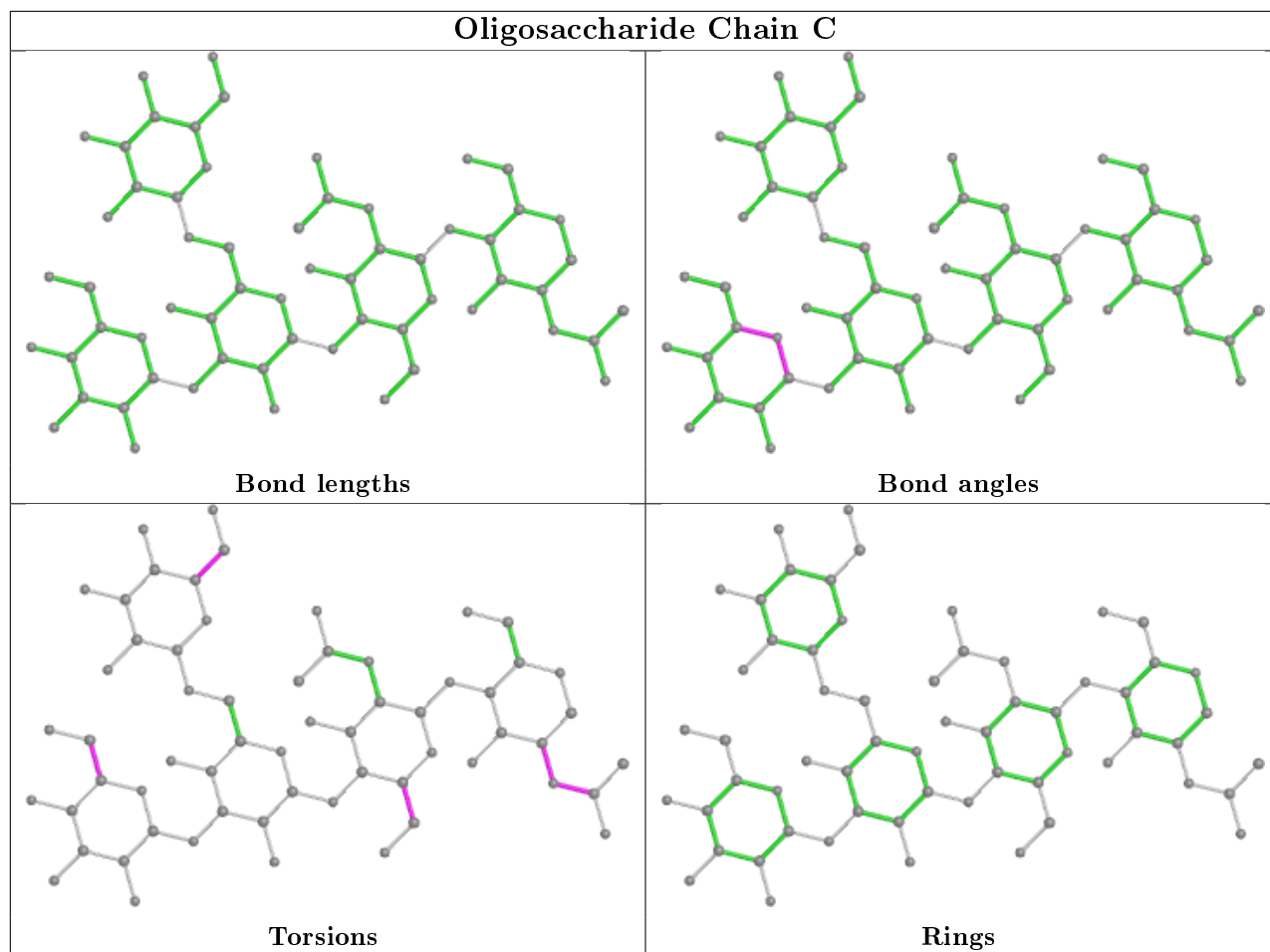
Mol	Chain	Res	Type	Atoms
2	B	7	MAN	C1-C2-C3-C4-C5-O5

2 monomers are involved in 1 short contact:

Mol	Chain	Res	Type	Clashes	Symm-Clashes
2	B	1	NAG	1	0
2	B	2	NDG	1	0

The following is a two-dimensional graphical depiction of Mogul quality analysis of bond lengths, bond angles, torsion angles, and ring geometry for oligosaccharide.





5.6 Ligand geometry [i](#)

Of 3 ligands modelled in this entry, 1 is monoatomic - leaving 2 for Mogul analysis.

In the following table, the Counts columns list the number of bonds (or angles) for which Mogul statistics could be retrieved, the number of bonds (or angles) that are observed in the model and the number of bonds (or angles) that are defined in the Chemical Component Dictionary. The Link column lists molecule types, if any, to which the group is linked. The Z score for a bond length (or angle) is the number of standard deviations the observed value is removed from the expected value. A bond length (or angle) with $|Z| > 2$ is considered an outlier worth inspection. RMSZ is the root-mean-square of all Z scores of the bond lengths (or angles).

Mol	Type	Chain	Res	Link	Bond lengths			Bond angles		
					Counts	RMSZ	# $ Z > 2$	Counts	RMSZ	# $ Z > 2$
6	DMJ	A	1002	5	11,11,11	3.27	5 (45%)	13,15,15	3.82	6 (46%)
4	NAG	A	1200	1	14,14,15	0.47	0	17,19,21	0.68	1 (5%)

In the following table, the Chirals column lists the number of chiral outliers, the number of chiral centers analysed, the number of these observed in the model and the number defined in the Chemical Component Dictionary. Similar counts are reported in the Torsion and Rings columns.

'-' means no outliers of that kind were identified.

Mol	Type	Chain	Res	Link	Chirals	Torsions	Rings
6	DMJ	A	1002	5	-	2/2/19/19	0/1/1/1
4	NAG	A	1200	1	-	2/6/23/26	0/1/1/1

All (5) bond length outliers are listed below:

Mol	Chain	Res	Type	Atoms	Z	Observed(Å)	Ideal(Å)
6	A	1002	DMJ	C1-C2	6.62	1.58	1.52
6	A	1002	DMJ	C5-N5	5.36	1.55	1.47
6	A	1002	DMJ	C2-C3	5.08	1.60	1.52
6	A	1002	DMJ	C3-C4	3.03	1.60	1.52
6	A	1002	DMJ	C4-C5	2.53	1.57	1.52

All (7) bond angle outliers are listed below:

Mol	Chain	Res	Type	Atoms	Z	Observed(°)	Ideal(°)
6	A	1002	DMJ	O6-C6-C5	11.48	138.93	111.09
6	A	1002	DMJ	C1-N5-C5	4.80	120.00	109.61
6	A	1002	DMJ	O4-C4-C3	-3.14	103.09	110.35
6	A	1002	DMJ	C4-C5-N5	-2.57	103.99	109.14
6	A	1002	DMJ	O4-C4-C5	-2.21	104.89	109.47
6	A	1002	DMJ	C3-C4-C5	2.15	114.17	111.02
4	A	1200	NAG	C2-N2-C7	-2.04	120.00	122.90

There are no chirality outliers.

All (4) torsion outliers are listed below:

Mol	Chain	Res	Type	Atoms
6	A	1002	DMJ	N5-C5-C6-O6
4	A	1200	NAG	C8-C7-N2-C2
4	A	1200	NAG	O7-C7-N2-C2
6	A	1002	DMJ	C4-C5-C6-O6

There are no ring outliers.

No monomer is involved in short contacts.

5.7 Other polymers [i](#)

There are no such residues in this entry.

5.8 Polymer linkage issues

There are no chain breaks in this entry.

6 Fit of model and data

6.1 Protein, DNA and RNA chains

EDS was not executed - this section is therefore empty.

6.2 Non-standard residues in protein, DNA, RNA chains

EDS was not executed - this section is therefore empty.

6.3 Carbohydrates

EDS was not executed - this section is therefore empty.

6.4 Ligands

EDS was not executed - this section is therefore empty.

6.5 Other polymers

EDS was not executed - this section is therefore empty.