

Full wwPDB/EMDatabank EM Map/Model Validation Report ⓘ

Sep 13, 2018 – 10:50 AM EDT

PDB ID : 6G79
EMDB ID: : EMD-4358
Title : Coupling specificity of heterotrimeric Go to the serotonin 5-HT1B receptor
Authors : Garcia-Nafria, J.; Nehme, R.; Edwards, P.; Tate, C.G.
Deposited on : 2018-04-05
Resolution : 3.78 Å(reported)

This is a Full wwPDB/EMDatabank EM Map/Model Validation Report
for a publicly released PDB/EMDB entry.

We welcome your comments at validation@mail.wwpdb.org

A user guide is available at

<https://www.wwpdb.org/validation/2017/EMValidationReportHelp>

with specific help available everywhere you see the ⓘ symbol.

MolProbity : 4.02b-467
Mogul : 1.7.3 (157068), CSD as539be (2018)
Percentile statistics : 20171227.v01 (using entries in the PDB archive December 27th 2017)
Ideal geometry (proteins) : Engh & Huber (2001)
Ideal geometry (DNA, RNA) : Parkinson et. al. (1996)
Validation Pipeline (wwPDB-VP) : rb-20031172

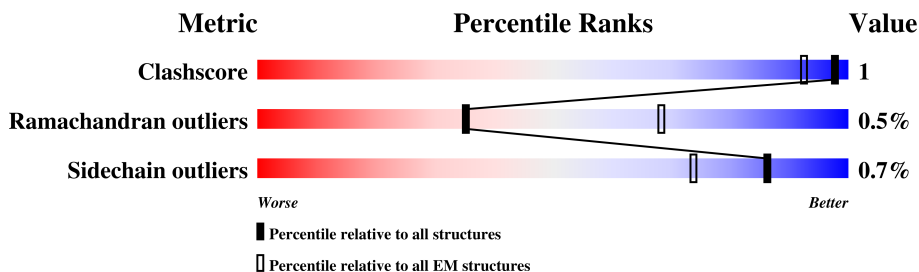
1 Overall quality at a glance

The following experimental techniques were used to determine the structure:

ELECTRON MICROSCOPY

The reported resolution of this entry is 3.78 Å.

Percentile scores (ranging between 0-100) for global validation metrics of the entry are shown in the following graphic. The table shows the number of entries on which the scores are based.



Metric	Whole archive (#Entries)	EM structures (#Entries)
Clashscore	136327	1886
Ramachandran outliers	132723	1663
Sidechain outliers	132532	1531

The table below summarises the geometric issues observed across the polymeric chains. The red, orange, yellow and green segments on the bar indicate the fraction of residues that contain outliers for ≥ 3 , 2, 1 and 0 types of geometric quality criteria. A grey segment represents the fraction of residues that are not modelled. The numeric value for each fraction is indicated below the corresponding segment, with a dot representing fractions $\leq 5\%$

Mol	Chain	Length	Quality of chain
1	B	339	97% ..
2	G	71	79% 21%
3	A	225	89% • 7%
4	S	364	70% • 28%

2 Entry composition [i](#)

There are 5 unique types of molecules in this entry. The entry contains 6053 atoms, of which 0 are hydrogens and 0 are deuteriums.

In the tables below, the AltConf column contains the number of residues with at least one atom in alternate conformation and the Trace column contains the number of residues modelled with at most 2 atoms.

- Molecule 1 is a protein called Guanine nucleotide-binding protein G(I)/G(S)/G(T) subunit beta-1.

Mol	Chain	Residues	Atoms					AltConf	Trace
			Total	C	N	O	S		
1	B	333	2270	1434	396	422	18	0	0

- Molecule 2 is a protein called Guanine nucleotide-binding protein G(I)/G(S)/G(O) subunit gamma-2.

Mol	Chain	Residues	Atoms				AltConf	Trace
			Total	C	N	O		
2	G	56	342	218	63	61	0	0

There is a discrepancy between the modelled and reference sequences:

Chain	Residue	Modelled	Actual	Comment	Reference
G	68	SER	CYS	conflict	UNP P59768

- Molecule 3 is a protein called Guanine nucleotide-binding protein G(o) subunit alpha.

Mol	Chain	Residues	Atoms					AltConf	Trace
			Total	C	N	O	S		
3	A	209	1448	932	247	261	8	0	0

There are 20 discrepancies between the modelled and reference sequences:

Chain	Residue	Modelled	Actual	Comment	Reference
A	42	ASP	GLY	conflict	UNP P09471
A	43	ASN	GLU	conflict	UNP P09471
A	174	GLY	-	linker	UNP P09471
A	175	GLY	-	linker	UNP P09471
A	176	SER	-	linker	UNP P09471
A	177	GLY	-	linker	UNP P09471
A	178	GLY	-	linker	UNP P09471
A	179	SER	-	linker	UNP P09471

Continued on next page...

Continued from previous page...

Chain	Residue	Modelled	Actual	Comment	Reference
A	180	GLY	-	linker	UNP P09471
A	181	GLY	-	linker	UNP P09471
A	227	ASP	ALA	conflict	UNP A0A0P7W0C8
A	?	-	GLY	deletion	UNP A0A0P7W0C8
A	?	-	TYR	deletion	UNP A0A0P7W0C8
A	231	TYR	GLN	conflict	UNP A0A0P7W0C8
A	276	GLY	ALA	conflict	UNP A0A0P7W0C8
A	283	PRO	ALA	conflict	UNP A0A0P7W0C8
A	285	THR	SER	conflict	UNP A0A0P7W0C8
A	330	ASN	GLY	conflict	UNP A0A0P7W0C8
A	332	ALA	ILE	conflict	UNP A0A0P7W0C8
A	335	ILE	VAL	conflict	UNP A0A0P7W0C8

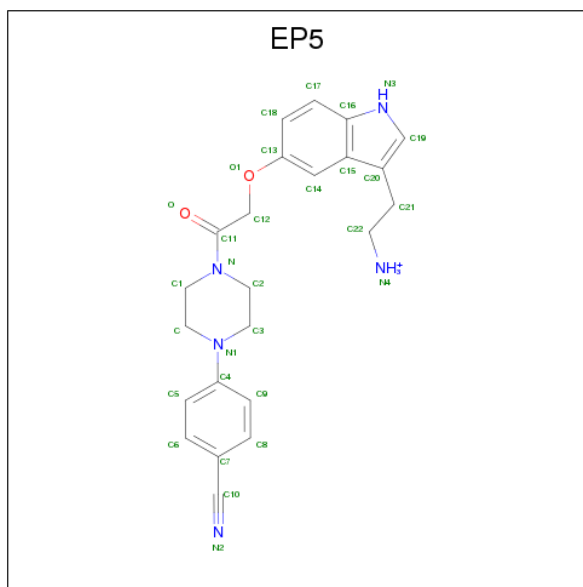
- Molecule 4 is a protein called 5-hydroxytryptamine receptor 1B.

Mol	Chain	Residues	Atoms					AltConf	Trace
			Total	C	N	O	S		
4	S	262	1963	1315	310	330	8	0	0

There are 8 discrepancies between the modelled and reference sequences:

Chain	Residue	Modelled	Actual	Comment	Reference
S	33	MET	-	initiating methionine	UNP P28222
S	138	TRP	LEU	conflict	UNP P28222
S	391	GLU	-	expression tag	UNP P28222
S	392	ASN	-	expression tag	UNP P28222
S	393	LEU	-	expression tag	UNP P28222
S	394	TYR	-	expression tag	UNP P28222
S	395	PHE	-	expression tag	UNP P28222
S	396	GLN	-	expression tag	UNP P28222

- Molecule 5 is 2-[5-[2-[4-(4-cyanophenyl)piperazin-1-yl]-2-oxidanylidene-ethoxy]-1 {H}-indol-3-yl]ethylazanium (three-letter code: EP5) (formula: C₂₃H₂₆N₅O₂).

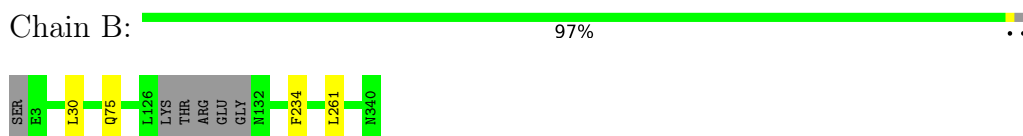


Mol	Chain	Residues	Atoms				AltConf
			Total	C	N	O	
5	S	1	30	23	5	2	0

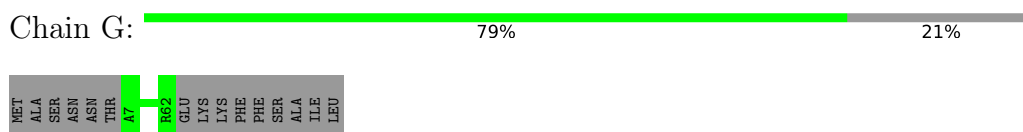
3 Residue-property plots [i](#)

These plots are drawn for all protein, RNA and DNA chains in the entry. The first graphic for a chain summarises the proportions of the various outlier classes displayed in the second graphic. The second graphic shows the sequence view annotated by issues in geometry. Residues are color-coded according to the number of geometric quality criteria for which they contain at least one outlier: green = 0, yellow = 1, orange = 2 and red = 3 or more. Stretches of 2 or more consecutive residues without any outlier are shown as a green connector. Residues present in the sample, but not in the model, are shown in grey.

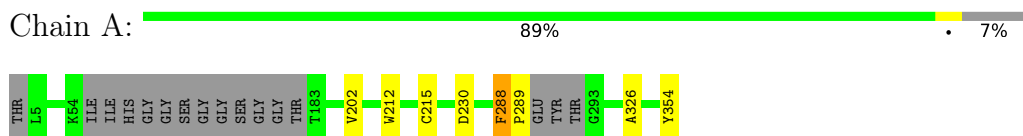
- Molecule 1: Guanine nucleotide-binding protein G(I)/G(S)/G(T) subunit beta-1



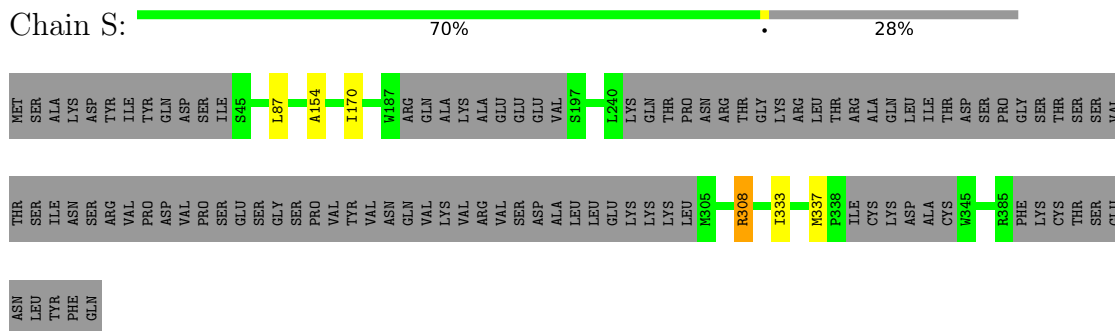
- Molecule 2: Guanine nucleotide-binding protein G(I)/G(S)/G(O) subunit gamma-2



- Molecule 3: Guanine nucleotide-binding protein G(o) subunit alpha



- Molecule 4: 5-hydroxytryptamine receptor 1B



4 Experimental information

Property	Value	Source
Reconstruction method	SINGLE PARTICLE	Depositor
Imposed symmetry	POINT, C1	Depositor
Number of particles used	730118	Depositor
Resolution determination method	FSC 0.143 CUT-OFF	Depositor
CTF correction method	PHASE FLIPPING AND AMPLITUDE CORRECTION	Depositor
Microscope	FEI TITAN KRIOS	Depositor
Voltage (kV)	300	Depositor
Electron dose ($e^-/\text{\AA}^2$)	30	Depositor
Minimum defocus (nm)	Not provided	Depositor
Maximum defocus (nm)	Not provided	Depositor
Magnification	Not provided	Depositor
Image detector	FEI FALCON III (4k x 4k)	Depositor

5 Model quality [i](#)

5.1 Standard geometry [i](#)

Bond lengths and bond angles in the following residue types are not validated in this section: EP5

The Z score for a bond length (or angle) is the number of standard deviations the observed value is removed from the expected value. A bond length (or angle) with $|Z| > 5$ is considered an outlier worth inspection. RMSZ is the root-mean-square of all Z scores of the bond lengths (or angles).

Mol	Chain	Bond lengths		Bond angles	
		RMSZ	# Z >2	RMSZ	# Z >2
1	B	0.33	0/2315	0.52	0/3175
2	G	0.33	0/348	0.46	0/484
3	A	0.37	0/1473	0.51	0/2008
4	S	0.38	0/2018	0.49	0/2777
All	All	0.36	0/6154	0.51	0/8444

There are no bond length outliers.

There are no bond angle outliers.

There are no chirality outliers.

There are no planarity outliers.

5.2 Too-close contacts [i](#)

In the following table, the Non-H and H(model) columns list the number of non-hydrogen atoms and hydrogen atoms in the chain respectively. The H(added) column lists the number of hydrogen atoms added and optimized by MolProbity. The Clashes column lists the number of clashes within the asymmetric unit, whereas Symm-Clashes lists symmetry related clashes.

Mol	Chain	Non-H	H(model)	H(added)	Clashes	Symm-Clashes
1	B	2270	0	2015	2	0
2	G	342	0	267	0	0
3	A	1448	0	1288	4	0
4	S	1963	0	1896	2	0
5	S	30	0	0	0	0
All	All	6053	0	5466	6	0

The all-atom clashscore is defined as the number of clashes found per 1000 atoms (including hydrogen atoms). The all-atom clashscore for this structure is 1.

All (6) close contacts within the same asymmetric unit are listed below, sorted by their clash magnitude.

Atom-1	Atom-2	Interatomic distance (Å)	Clash overlap (Å)
3:A:288:PHE:CB	3:A:289:PRO:CD	2.80	0.60
4:S:87:LEU:HD23	4:S:170:ILE:HD11	2.00	0.43
1:B:30:LEU:HD12	1:B:261:LEU:HB3	2.01	0.41
1:B:75:GLN:NE2	3:A:215:CYS:SG	2.93	0.41
3:A:202:VAL:HG21	3:A:212:TRP:CZ3	2.56	0.40
3:A:354:TYR:CZ	4:S:308:ARG:NH1	2.90	0.40

There are no symmetry-related clashes.

5.3 Torsion angles [i](#)

5.3.1 Protein backbone [i](#)

In the following table, the Percentiles column shows the percent Ramachandran outliers of the chain as a percentile score with respect to all PDB entries followed by that with respect to all EM entries.

The Analysed column shows the number of residues for which the backbone conformation was analysed, and the total number of residues.

Mol	Chain	Analysed	Favoured	Allowed	Outliers	Percentiles	
1	B	329/339 (97%)	311 (94%)	18 (6%)	0	100	100
2	G	54/71 (76%)	54 (100%)	0	0	100	100
3	A	203/225 (90%)	187 (92%)	13 (6%)	3 (2%)	11	50
4	S	254/364 (70%)	243 (96%)	10 (4%)	1 (0%)	36	75
All	All	840/999 (84%)	795 (95%)	41 (5%)	4 (0%)	35	71

All (4) Ramachandran outliers are listed below:

Mol	Chain	Res	Type
3	A	288	PHE
3	A	326	ALA
3	A	230	ASP
4	S	154	ALA

5.3.2 Protein sidechains [i](#)

In the following table, the Percentiles column shows the percent sidechain outliers of the chain as a percentile score with respect to all PDB entries followed by that with respect to all EM entries.

The Analysed column shows the number of residues for which the sidechain conformation was analysed, and the total number of residues.

Mol	Chain	Analysed	Rotameric	Outliers	Percentiles	
1	B	201/282 (71%)	200 (100%)	1 (0%)	90	95
2	G	18/58 (31%)	18 (100%)	0	100	100
3	A	125/193 (65%)	125 (100%)	0	100	100
4	S	193/324 (60%)	190 (98%)	3 (2%)	65	84
All	All	537/857 (63%)	533 (99%)	4 (1%)	86	93

All (4) residues with a non-rotameric sidechain are listed below:

Mol	Chain	Res	Type
1	B	234	PHE
4	S	308	ARG
4	S	333	ILE
4	S	337	MET

Some sidechains can be flipped to improve hydrogen bonding and reduce clashes. All (3) such sidechains are listed below:

Mol	Chain	Res	Type
1	B	75	GLN
1	B	88	ASN
1	B	230	ASN

5.3.3 RNA [i](#)

There are no RNA molecules in this entry.

5.4 Non-standard residues in protein, DNA, RNA chains [i](#)

There are no non-standard protein/DNA/RNA residues in this entry.

5.5 Carbohydrates [i](#)

There are no carbohydrates in this entry.

5.6 Ligand geometry [i](#)

1 ligand is modelled in this entry.

In the following table, the Counts columns list the number of bonds (or angles) for which Mogul statistics could be retrieved, the number of bonds (or angles) that are observed in the model and the number of bonds (or angles) that are defined in the Chemical Component Dictionary. The Link column lists molecule types, if any, to which the group is linked. The Z score for a bond length (or angle) is the number of standard deviations the observed value is removed from the expected value. A bond length (or angle) with $|Z| > 2$ is considered an outlier worth inspection. RMSZ is the root-mean-square of all Z scores of the bond lengths (or angles).

Mol	Type	Chain	Res	Link	Bond lengths			Bond angles		
					Counts	RMSZ	# Z > 2	Counts	RMSZ	# Z > 2
5	EP5	S	401	-	31,33,33	1.47	2 (6%)	37,45,45	1.34	6 (16%)

In the following table, the Chirals column lists the number of chiral outliers, the number of chiral centers analysed, the number of these observed in the model and the number defined in the Chemical Component Dictionary. Similar counts are reported in the Torsion and Rings columns. '-' means no outliers of that kind were identified.

Mol	Type	Chain	Res	Link	Chirals	Torsions	Rings
5	EP5	S	401	-	-	0/18/28/28	0/4/4/4

All (2) bond length outliers are listed below:

Mol	Chain	Res	Type	Atoms	Z	Observed(Å)	Ideal(Å)
5	S	401	EP5	C7-C10	-6.66	1.28	1.44
5	S	401	EP5	C15-C16	2.03	1.48	1.42

All (6) bond angle outliers are listed below:

Mol	Chain	Res	Type	Atoms	Z	Observed(°)	Ideal(°)
5	S	401	EP5	C-C1-N	-2.86	104.05	110.44
5	S	401	EP5	C1-C-N1	-2.27	106.21	110.67
5	S	401	EP5	O-C11-C12	-2.02	115.63	120.67
5	S	401	EP5	C12-C11-N	2.07	121.96	116.95
5	S	401	EP5	C3-N1-C	2.12	116.09	111.54
5	S	401	EP5	C12-O1-C13	3.85	124.61	117.67

There are no chirality outliers.

There are no torsion outliers.

There are no ring outliers.

No monomer is involved in short contacts.

5.7 Other polymers

There are no such residues in this entry.

5.8 Polymer linkage issues

There are no chain breaks in this entry.