



Full wwPDB X-ray Structure Validation Report ⓘ

Nov 20, 2024 – 12:11 pm GMT

PDB ID : 9G8D
Title : Crystal structure of the photosensory core module (PCM) of a cyanophenylalanine mutant oCNF192 of the bathy phytochrome Agp2 from *Agrobacterium fabrum* in the Pfr state.
Authors : Sauthof, L.; Schmidt, A.; Scheerer, P.
Deposited on : 2024-07-23
Resolution : 2.06 Å(reported)

This is a Full wwPDB X-ray Structure Validation Report for a publicly released PDB entry.

We welcome your comments at validation@mail.wwpdb.org

A user guide is available at

<https://www.wwpdb.org/validation/2017/XrayValidationReportHelp>

with specific help available everywhere you see the ⓘ symbol.

The types of validation reports are described at

<http://www.wwpdb.org/validation/2017/FAQs#types>.

The following versions of software and data (see [references ⓘ](#)) were used in the production of this report:

MolProbity : 4.02b-467
Mogul : 1.8.4, CSD as541be (2020)
Xtriage (Phenix) : 1.13
EDS : 3.0
buster-report : 1.1.7 (2018)
Percentile statistics : 20231227.v01 (using entries in the PDB archive December 27th 2023)
CCP4 : 9.0.003 (Gargrove)
Density-Fitness : 1.0.11
Ideal geometry (proteins) : Engh & Huber (2001)
Ideal geometry (DNA, RNA) : Parkinson et al. (1996)
Validation Pipeline (wwPDB-VP) : 2.39

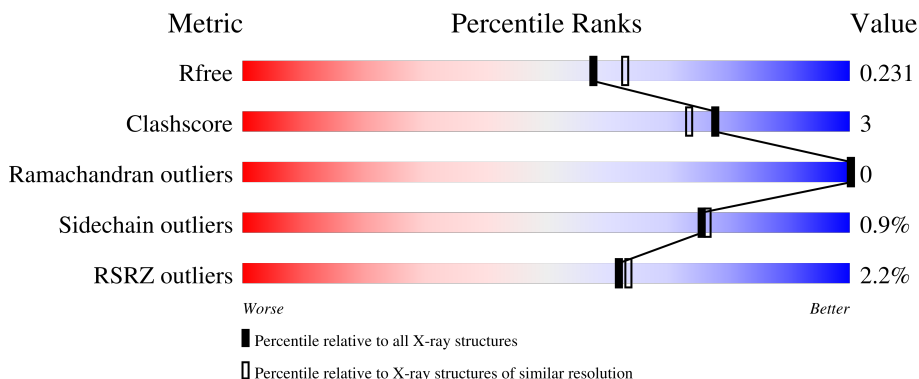
1 Overall quality at a glance

The following experimental techniques were used to determine the structure:

X-RAY DIFFRACTION

The reported resolution of this entry is 2.06 Å.

Percentile scores (ranging between 0-100) for global validation metrics of the entry are shown in the following graphic. The table shows the number of entries on which the scores are based.



Metric	Whole archive (#Entries)	Similar resolution (#Entries, resolution range(Å))
R_{free}	164625	3436 (2.08-2.04)
Clashscore	180529	3661 (2.08-2.04)
Ramachandran outliers	177936	3649 (2.08-2.04)
Sidechain outliers	177891	3649 (2.08-2.04)
RSRZ outliers	164620	3436 (2.08-2.04)

The table below summarises the geometric issues observed across the polymeric chains and their fit to the electron density. The red, orange, yellow and green segments of the lower bar indicate the fraction of residues that contain outliers for ≥ 3 , 2, 1 and 0 types of geometric quality criteria respectively. A grey segment represents the fraction of residues that are not modelled. The numeric value for each fraction is indicated below the corresponding segment, with a dot representing fractions $\leq 5\%$. The upper red bar (where present) indicates the fraction of residues that have poor fit to the electron density. The numeric value is given above the bar.

Mol	Chain	Length	Quality of chain
1	A	507	
2	B	507	

2 Entry composition

There are 7 unique types of molecules in this entry. The entry contains 8350 atoms, of which 0 are hydrogens and 0 are deuteriums.

In the tables below, the ZeroOcc column contains the number of atoms modelled with zero occupancy, the AltConf column contains the number of residues with at least one atom in alternate conformation and the Trace column contains the number of residues modelled with at most 2 atoms.

- Molecule 1 is a protein called histidine kinase.

Mol	Chain	Residues	Atoms					ZeroOcc	AltConf	Trace
			Total	C	N	O	S			
1	A	489	3776	2390	675	691	20	0	3	0

There are 6 discrepancies between the modelled and reference sequences:

Chain	Residue	Modelled	Actual	Comment	Reference
A	502	HIS	-	expression tag	UNP A9CI81
A	503	HIS	-	expression tag	UNP A9CI81
A	504	HIS	-	expression tag	UNP A9CI81
A	505	HIS	-	expression tag	UNP A9CI81
A	506	HIS	-	expression tag	UNP A9CI81
A	507	HIS	-	expression tag	UNP A9CI81

- Molecule 2 is a protein called histidine kinase.

Mol	Chain	Residues	Atoms					ZeroOcc	AltConf	Trace
			Total	C	N	O	S			
2	B	492	3800	2410	674	695	21	0	4	0

There are 6 discrepancies between the modelled and reference sequences:

Chain	Residue	Modelled	Actual	Comment	Reference
B	502	HIS	-	expression tag	UNP A9CI81
B	503	HIS	-	expression tag	UNP A9CI81
B	504	HIS	-	expression tag	UNP A9CI81
B	505	HIS	-	expression tag	UNP A9CI81
B	506	HIS	-	expression tag	UNP A9CI81
B	507	HIS	-	expression tag	UNP A9CI81

- Molecule 3 is DI(HYDROXYETHYL)ETHER (three-letter code: PEG) (formula: C₄H₁₀O₃).



Mol	Chain	Residues	Atoms			ZeroOcc	AltConf
3	A	1	Total	C	O	0	0
			7	4	3		
3	B	1	Total	C	O	0	0
			7	4	3		

- Molecule 4 is (4S)-2-METHYL-2,4-PENTANEDIOL (three-letter code: MPD) (formula: C₆H₁₄O₂).



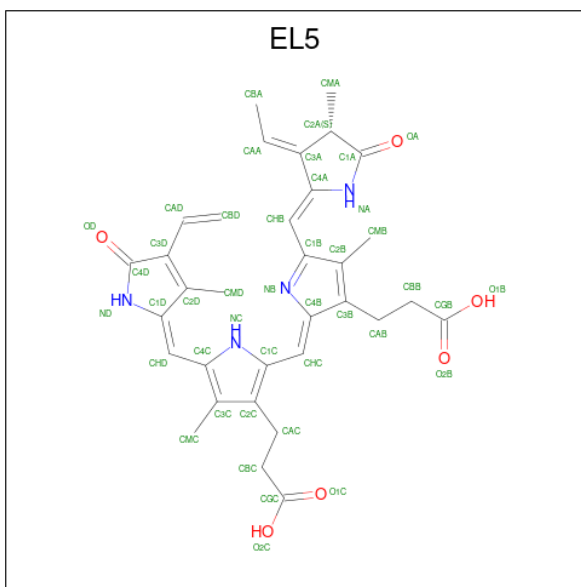
Mol	Chain	Residues	Atoms			ZeroOcc	AltConf
4	A	1	Total	C	O	0	0
			8	6	2		

Continued on next page...

Continued from previous page...

Mol	Chain	Residues	Atoms			ZeroOcc	AltConf
4	B	1	Total	C	O	0	0
			8	6	2		

- Molecule 5 is 3-[(2Z)-2-({3-(2-carboxyethyl)-5-[(E)-(4-ethenyl-3-methyl-5-oxo-1,5-dihydro-2H-pyrrol-2-ylidene)methyl]-4-methyl-1H-pyrrol-2-yl)methylidene)-5-{(Z)-[(3E,4S)-3-ethylidene-4-methyl-5-oxopyrrolidin-2-ylidene]methyl}-4-methyl-2H-pyrrol-3-yl]propanoic acid (three-letter code: EL5) (formula: C₃₃H₃₆N₄O₆) (labeled as "Ligand of Interest" by depositor).



Mol	Chain	Residues	Atoms				ZeroOcc	AltConf
5	A	1	Total	C	N	O	0	0
			43	33	4	6		
5	B	1	Total	C	N	O	0	0
			43	33	4	6		

- Molecule 6 is CHLORIDE ION (three-letter code: CL) (formula: Cl).

Mol	Chain	Residues	Atoms		ZeroOcc	AltConf
6	A	2	Total	Cl	0	0
			2	2		

- Molecule 7 is water.

Mol	Chain	Residues	Atoms		ZeroOcc	AltConf
7	A	340	Total	O	0	0
			340	340		

Continued on next page...

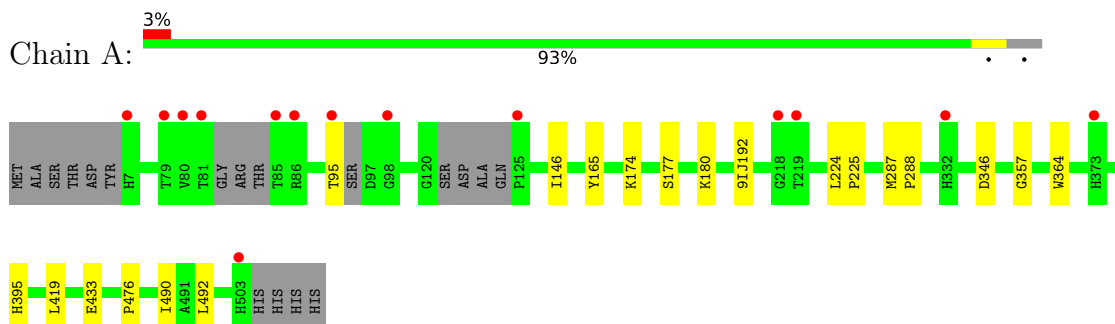
Continued from previous page...

Mol	Chain	Residues	Atoms		ZeroOcc	AltConf
7	B	316	Total 316	O 316	0	0

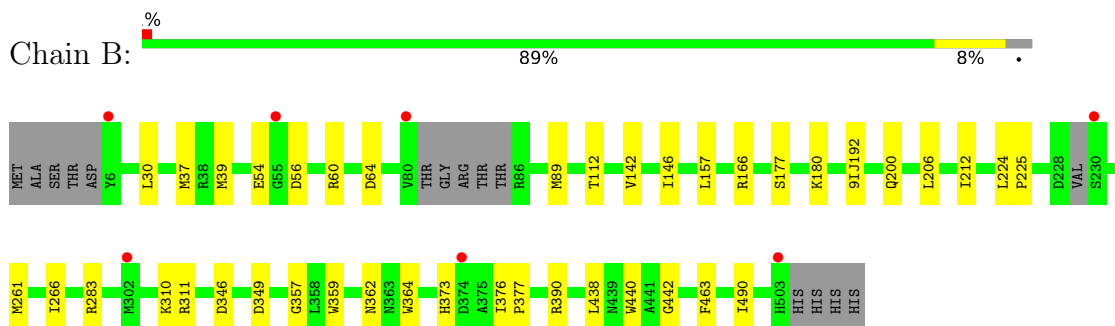
3 Residue-property plots [i](#)

These plots are drawn for all protein, RNA, DNA and oligosaccharide chains in the entry. The first graphic for a chain summarises the proportions of the various outlier classes displayed in the second graphic. The second graphic shows the sequence view annotated by issues in geometry and electron density. Residues are color-coded according to the number of geometric quality criteria for which they contain at least one outlier: green = 0, yellow = 1, orange = 2 and red = 3 or more. A red dot above a residue indicates a poor fit to the electron density ($RSRZ > 2$). Stretches of 2 or more consecutive residues without any outlier are shown as a green connector. Residues present in the sample, but not in the model, are shown in grey.

- Molecule 1: histidine kinase



- Molecule 2: histidine kinase



4 Data and refinement statistics

Property	Value	Source
Space group	P 21 21 21	Depositor
Cell constants a, b, c, α , β , γ	74.64Å 93.58Å 173.94Å 90.00° 90.00° 90.00°	Depositor
Resolution (Å)	45.83 – 2.06 45.83 – 2.06	Depositor EDS
% Data completeness (in resolution range)	99.8 (45.83-2.06) 99.8 (45.83-2.06)	Depositor EDS
R_{merge}	(Not available)	Depositor
R_{sym}	(Not available)	Depositor
$\langle I/\sigma(I) \rangle$ ¹	1.60 (at 2.07Å)	Xtrriage
Refinement program	REFMAC 5.8.0267	Depositor
R, R_{free}	0.186 , 0.224 0.195 , 0.231	Depositor DCC
R_{free} test set	3730 reflections (4.89%)	wwPDB-VP
Wilson B-factor (Å ²)	31.9	Xtrriage
Anisotropy	0.045	Xtrriage
Bulk solvent k_{sol} (e/Å ³), B_{sol} (Å ²)	0.32 , 33.4	EDS
L-test for twinning ²	$\langle L \rangle = 0.50$, $\langle L^2 \rangle = 0.33$	Xtrriage
Estimated twinning fraction	No twinning to report.	Xtrriage
F_o, F_c correlation	0.96	EDS
Total number of atoms	8350	wwPDB-VP
Average B, all atoms (Å ²)	36.0	wwPDB-VP

Xtrriage's analysis on translational NCS is as follows: *The largest off-origin peak in the Patterson function is 4.13% of the height of the origin peak. No significant pseudotranslation is detected.*

¹Intensities estimated from amplitudes.

²Theoretical values of $\langle |L| \rangle$, $\langle L^2 \rangle$ for acentric reflections are 0.5, 0.333 respectively for untwinned datasets, and 0.375, 0.2 for perfectly twinned datasets.

5 Model quality [i](#)

5.1 Standard geometry [i](#)

Bond lengths and bond angles in the following residue types are not validated in this section: PEG, EL5, MLZ, 9IJ, MPD, CL

The Z score for a bond length (or angle) is the number of standard deviations the observed value is removed from the expected value. A bond length (or angle) with $|Z| > 5$ is considered an outlier worth inspection. RMSZ is the root-mean-square of all Z scores of the bond lengths (or angles).

Mol	Chain	Bond lengths		Bond angles	
		RMSZ	# Z >5	RMSZ	# Z >5
1	A	0.64	0/3757	0.71	0/5098
2	B	0.66	0/3797	0.71	0/5158
All	All	0.65	0/7554	0.71	0/10256

There are no bond length outliers.

There are no bond angle outliers.

There are no chirality outliers.

There are no planarity outliers.

5.2 Too-close contacts [i](#)

In the following table, the Non-H and H(model) columns list the number of non-hydrogen atoms and hydrogen atoms in the chain respectively. The H(added) column lists the number of hydrogen atoms added and optimized by MolProbity. The Clashes column lists the number of clashes within the asymmetric unit, whereas Symm-Clashes lists symmetry-related clashes.

Mol	Chain	Non-H	H(model)	H(added)	Clashes	Symm-Clashes
1	A	3776	0	3671	15	0
2	B	3800	0	3698	28	0
3	A	7	0	10	0	0
3	B	7	0	10	3	0
4	A	8	0	14	2	0
4	B	8	0	14	3	0
5	A	43	0	0	0	0
5	B	43	0	0	0	0
6	A	2	0	0	0	0
7	A	340	0	0	1	0
7	B	316	0	0	3	0
All	All	8350	0	7417	40	0

The all-atom clashscore is defined as the number of clashes found per 1000 atoms (including hydrogen atoms). The all-atom clashscore for this structure is 3.

All (40) close contacts within the same asymmetric unit are listed below, sorted by their clash magnitude.

Atom-1	Atom-2	Interatomic distance (Å)	Clash overlap (Å)
1:A:146[B]:ILE:HG23	1:A:177:SER:HB2	1.83	0.61
4:A:602:MPD:O4	4:A:602:MPD:HM1	2.01	0.61
2:B:54:GLU:O	2:B:60:ARG:NH1	2.34	0.60
2:B:357:GLY:HA3	2:B:364:TRP:CH2	2.39	0.58
2:B:37:MET:HG3	2:B:112:THR:HG21	1.88	0.55
2:B:60:ARG:HD3	2:B:64:ASP:OD2	2.08	0.53
4:B:602:MPD:O4	4:B:602:MPD:HM2	2.09	0.52
1:A:346:ASP:OD2	4:A:602:MPD:HM3	2.10	0.52
1:A:146[B]:ILE:CG2	1:A:177:SER:HB2	2.40	0.51
1:A:490:ILE:HG21	2:B:490[B]:ILE:HG21	1.92	0.50
2:B:311:ARG:HH12	3:B:601:PEG:C4	2.26	0.49
1:A:490:ILE:HG21	2:B:490[A]:ILE:HG21	1.95	0.48
2:B:200:GLN:HB2	7:B:944:HOH:O	2.14	0.47
2:B:212:ILE:HG13	2:B:261:MET:HG3	1.97	0.47
2:B:142:VAL:HG12	2:B:146[A]:ILE:HD12	1.97	0.47
1:A:165:TYR:HA	1:A:174:MLZ:O	2.15	0.46
2:B:346:ASP:OD2	4:B:602:MPD:HM1	2.16	0.46
1:A:490:ILE:CG2	2:B:490[B]:ILE:HG21	2.46	0.45
2:B:146[B]:ILE:HG22	2:B:177:SER:HB2	1.98	0.45
2:B:311:ARG:HH12	3:B:601:PEG:H42	1.82	0.45
1:A:357:GLY:HA3	1:A:364:TRP:CH2	2.53	0.44
2:B:56:ASP:CB	7:B:970:HOH:O	2.64	0.44
1:A:224:LEU:HA	1:A:225:PRO:HA	1.86	0.44
2:B:89:MET:HE2	7:B:991:HOH:O	2.17	0.43
1:A:433:GLU:HG2	7:A:900:HOH:O	2.17	0.43
2:B:146[A]:ILE:HG22	2:B:177:SER:HB2	2.01	0.43
2:B:224:LEU:HA	2:B:225:PRO:HA	1.82	0.43
2:B:166:ARG:HD2	3:B:601:PEG:H32	2.00	0.42
1:A:490:ILE:HG23	2:B:490[A]:ILE:HG23	2.01	0.42
1:A:490:ILE:HG23	2:B:490[B]:ILE:CG2	2.50	0.42
2:B:346:ASP:HB3	4:B:602:MPD:HM1	2.01	0.41
1:A:287:MET:HB3	1:A:288:PRO:HD3	2.02	0.41
2:B:376:ILE:N	2:B:377:PRO:CD	2.83	0.41
2:B:440:TRP:CE2	2:B:442:GLY:HA3	2.55	0.41
2:B:157:LEU:O	2:B:283:ARG:NH2	2.53	0.41
2:B:30:LEU:C	2:B:30:LEU:HD23	2.42	0.40
2:B:206:LEU:HD12	2:B:266:ILE:HD12	2.02	0.40

Continued on next page...

Continued from previous page...

Atom-1	Atom-2	Interatomic distance (Å)	Clash overlap (Å)
2:B:359:TRP:CZ2	2:B:362:ASN:HA	2.56	0.40
1:A:395:HIS:HB3	1:A:476:PRO:HA	2.04	0.40
1:A:419:LEU:CD2	1:A:492:LEU:HD13	2.52	0.40

There are no symmetry-related clashes.

5.3 Torsion angles [i](#)

5.3.1 Protein backbone [i](#)

In the following table, the Percentiles column shows the percent Ramachandran outliers of the chain as a percentile score with respect to all X-ray entries followed by that with respect to entries of similar resolution.

The Analysed column shows the number of residues for which the backbone conformation was analysed, and the total number of residues.

Mol	Chain	Analysed	Favoured	Allowed	Outliers	Percentiles	
1	A	474/507 (94%)	469 (99%)	5 (1%)	0	100	100
2	B	481/507 (95%)	476 (99%)	5 (1%)	0	100	100
All	All	955/1014 (94%)	945 (99%)	10 (1%)	0	100	100

There are no Ramachandran outliers to report.

5.3.2 Protein sidechains [i](#)

In the following table, the Percentiles column shows the percent sidechain outliers of the chain as a percentile score with respect to all X-ray entries followed by that with respect to entries of similar resolution.

The Analysed column shows the number of residues for which the sidechain conformation was analysed, and the total number of residues.

Mol	Chain	Analysed	Rotameric	Outliers	Percentiles	
1	A	381/411 (93%)	380 (100%)	1 (0%)	91	92
2	B	385/412 (93%)	379 (98%)	6 (2%)	58	57
All	All	766/823 (93%)	759 (99%)	7 (1%)	75	76

All (7) residues with a non-rotameric sidechain are listed below:

Mol	Chain	Res	Type
1	A	95	THR
2	B	39	MET
2	B	349	ASP
2	B	373	HIS
2	B	390	ARG
2	B	438	LEU
2	B	463	PHE

Sometimes sidechains can be flipped to improve hydrogen bonding and reduce clashes. There are no such sidechains identified.

5.3.3 RNA [i](#)

There are no RNA molecules in this entry.

5.4 Non-standard residues in protein, DNA, RNA chains [i](#)

19 non-standard protein/DNA/RNA residues are modelled in this entry.

In the following table, the Counts columns list the number of bonds (or angles) for which Mogul statistics could be retrieved, the number of bonds (or angles) that are observed in the model and the number of bonds (or angles) that are defined in the Chemical Component Dictionary. The Link column lists molecule types, if any, to which the group is linked. The Z score for a bond length (or angle) is the number of standard deviations the observed value is removed from the expected value. A bond length (or angle) with $|Z| > 2$ is considered an outlier worth inspection. RMSZ is the root-mean-square of all Z scores of the bond lengths (or angles).

Mol	Type	Chain	Res	Link	Bond lengths			Bond angles		
					Counts	RMSZ	# Z > 2	Counts	RMSZ	# Z > 2
1	9IJ	A	192	1	12,13,14	3.13	2 (16%)	13,16,18	1.11	1 (7%)
1	MLZ	A	310	1	8,9,10	0.44	0	4,9,11	0.65	0
2	9IJ	B	192	2	12,13,14	3.26	2 (16%)	13,16,18	0.75	0
2	MLZ	B	446	2	8,9,10	0.44	0	4,9,11	0.95	0
1	MLZ	A	461	1	8,9,10	0.42	0	4,9,11	0.48	0
1	MLZ	A	432	1	8,9,10	0.50	0	4,9,11	0.92	0
1	MLZ	A	467	1	8,9,10	0.43	0	4,9,11	0.65	0
1	MLZ	A	154	1	8,9,10	0.41	0	4,9,11	0.56	0
2	MLZ	B	174	2	8,9,10	0.41	0	4,9,11	0.97	0
2	MLZ	B	432	2	8,9,10	0.45	0	4,9,11	1.05	0
2	MLZ	B	154	2	8,9,10	0.40	0	4,9,11	0.86	0
1	MLZ	A	446	1	8,9,10	0.41	0	4,9,11	0.73	0
2	MLZ	B	310	2	8,9,10	0.43	0	4,9,11	1.10	1 (25%)

Mol	Type	Chain	Res	Link	Bond lengths			Bond angles		
					Counts	RMSZ	# Z > 2	Counts	RMSZ	# Z > 2
1	MLZ	A	207	1	8,9,10	0.36	0	4,9,11	0.92	0
1	MLZ	A	180	1	8,9,10	0.46	0	4,9,11	1.09	1 (25%)
2	MLZ	B	207	2	8,9,10	0.40	0	4,9,11	0.92	0
2	MLZ	B	467	2	8,9,10	0.37	0	4,9,11	0.58	0
2	MLZ	B	180	2	8,9,10	0.44	0	4,9,11	1.25	1 (25%)
1	MLZ	A	174	1	8,9,10	0.48	0	4,9,11	0.78	0

In the following table, the Chirals column lists the number of chiral outliers, the number of chiral centers analysed, the number of these observed in the model and the number defined in the Chemical Component Dictionary. Similar counts are reported in the Torsion and Rings columns. '-' means no outliers of that kind were identified.

Mol	Type	Chain	Res	Link	Chirals	Torsions	Rings
1	9IJ	A	192	1	-	1/7/8/10	0/1/1/1
1	MLZ	A	310	1	-	0/7/8/10	-
2	9IJ	B	192	2	-	0/7/8/10	0/1/1/1
2	MLZ	B	446	2	-	0/7/8/10	-
1	MLZ	A	461	1	-	0/7/8/10	-
1	MLZ	A	432	1	-	0/7/8/10	-
1	MLZ	A	467	1	-	0/7/8/10	-
1	MLZ	A	154	1	-	1/7/8/10	-
2	MLZ	B	174	2	-	1/7/8/10	-
2	MLZ	B	432	2	-	0/7/8/10	-
2	MLZ	B	154	2	-	0/7/8/10	-
1	MLZ	A	446	1	-	1/7/8/10	-
2	MLZ	B	310	2	-	1/7/8/10	-
1	MLZ	A	207	1	-	1/7/8/10	-
1	MLZ	A	180	1	-	0/7/8/10	-
2	MLZ	B	207	2	-	1/7/8/10	-
2	MLZ	B	467	2	-	1/7/8/10	-
2	MLZ	B	180	2	-	1/7/8/10	-
1	MLZ	A	174	1	-	0/7/8/10	-

All (4) bond length outliers are listed below:

Mol	Chain	Res	Type	Atoms	Z	Observed(Å)	Ideal(Å)
2	B	192	9IJ	CD2-C01	-9.60	1.29	1.44
1	A	192	9IJ	CD2-C01	-9.19	1.30	1.44
2	B	192	9IJ	O-C	5.81	1.43	1.19
1	A	192	9IJ	O-C	5.35	1.41	1.19

All (4) bond angle outliers are listed below:

Mol	Chain	Res	Type	Atoms	Z	Observed(°)	Ideal(°)
1	A	192	9IJ	CD1-CG-CD2	2.58	120.51	117.64
2	B	180	MLZ	CM-NZ-CE	2.36	118.76	111.95
1	A	180	MLZ	CM-NZ-CE	2.16	118.20	111.95
2	B	310	MLZ	CM-NZ-CE	2.04	117.84	111.95

There are no chirality outliers.

All (9) torsion outliers are listed below:

Mol	Chain	Res	Type	Atoms
1	A	192	9IJ	O-C-CA-CB
1	A	207	MLZ	O-C-CA-CB
2	B	207	MLZ	O-C-CA-CB
1	A	446	MLZ	CD-CE-NZ-CM
2	B	180	MLZ	CD-CE-NZ-CM
1	A	154	MLZ	CG-CD-CE-NZ
2	B	174	MLZ	CD-CE-NZ-CM
2	B	310	MLZ	CG-CD-CE-NZ
2	B	467	MLZ	C-CA-CB-CG

There are no ring outliers.

1 monomer is involved in 1 short contact:

Mol	Chain	Res	Type	Clashes	Symm-Clashes
1	A	174	MLZ	1	0

5.5 Carbohydrates [i](#)

There are no oligosaccharides in this entry.

5.6 Ligand geometry [i](#)

Of 8 ligands modelled in this entry, 2 are monoatomic - leaving 6 for Mogul analysis.

In the following table, the Counts columns list the number of bonds (or angles) for which Mogul statistics could be retrieved, the number of bonds (or angles) that are observed in the model and the number of bonds (or angles) that are defined in the Chemical Component Dictionary. The Link column lists molecule types, if any, to which the group is linked. The Z score for a bond length (or angle) is the number of standard deviations the observed value is removed from the expected value. A bond length (or angle) with $|Z| > 2$ is considered an outlier worth inspection. RMSZ is the root-mean-square of all Z scores of the bond lengths (or angles).

Mol	Type	Chain	Res	Link	Bond lengths			Bond angles		
					Counts	RMSZ	# Z > 2	Counts	RMSZ	# Z > 2
5	EL5	A	603	1	42,46,46	2.83	12 (28%)	47,67,67	1.63	8 (17%)
4	MPD	A	602	-	7,7,7	0.15	0	9,10,10	0.46	0
4	MPD	B	602	-	7,7,7	0.16	0	9,10,10	0.55	0
3	PEG	A	601	-	6,6,6	0.17	0	5,5,5	0.17	0
5	EL5	B	603	2	42,46,46	2.85	12 (28%)	47,67,67	1.58	7 (14%)
3	PEG	B	601	-	6,6,6	0.26	0	5,5,5	0.28	0

In the following table, the Chirals column lists the number of chiral outliers, the number of chiral centers analysed, the number of these observed in the model and the number defined in the Chemical Component Dictionary. Similar counts are reported in the Torsion and Rings columns. '-' means no outliers of that kind were identified.

Mol	Type	Chain	Res	Link	Chirals	Torsions	Rings
5	EL5	A	603	1	-	7/26/74/74	0/4/4/4
4	MPD	A	602	-	-	2/5/5/5	-
4	MPD	B	602	-	-	3/5/5/5	-
3	PEG	A	601	-	-	2/4/4/4	-
5	EL5	B	603	2	-	7/26/74/74	0/4/4/4
3	PEG	B	601	-	-	4/4/4/4	-

All (24) bond length outliers are listed below:

Mol	Chain	Res	Type	Atoms	Z	Observed(Å)	Ideal(Å)
5	B	603	EL5	C2A-C1A	-10.88	1.38	1.51
5	A	603	EL5	C2A-C1A	-10.71	1.38	1.51
5	A	603	EL5	C2A-C3A	-9.82	1.38	1.51
5	B	603	EL5	C2A-C3A	-9.68	1.39	1.51
5	B	603	EL5	CHC-C4B	5.20	1.39	1.35
5	A	603	EL5	CHC-C4B	4.83	1.39	1.35
5	A	603	EL5	C4B-C3B	-4.07	1.39	1.45
5	B	603	EL5	C4B-C3B	-3.90	1.39	1.45
5	A	603	EL5	CAA-C3A	3.60	1.43	1.33
5	B	603	EL5	CAA-C3A	3.51	1.43	1.33
5	A	603	EL5	CBA-CAA	-3.34	1.37	1.49
5	B	603	EL5	CBA-CAA	-3.18	1.37	1.49
5	B	603	EL5	C1D-C2D	-3.04	1.39	1.45
5	B	603	EL5	C1B-C2B	-2.97	1.39	1.45
5	A	603	EL5	C1D-C2D	-2.91	1.39	1.45
5	A	603	EL5	C1B-C2B	-2.87	1.39	1.45
5	B	603	EL5	C4A-C3A	-2.79	1.40	1.45

Continued on next page...

Continued from previous page...

Mol	Chain	Res	Type	Atoms	Z	Observed(Å)	Ideal(Å)
5	A	603	EL5	C4A-C3A	-2.59	1.40	1.45
5	B	603	EL5	C3D-C4D	-2.53	1.40	1.47
5	A	603	EL5	C3D-C4D	-2.52	1.40	1.47
5	A	603	EL5	CAD-C3D	-2.48	1.40	1.47
5	B	603	EL5	CAD-C3D	-2.48	1.40	1.47
5	B	603	EL5	CHD-C1D	2.38	1.39	1.34
5	A	603	EL5	CHD-C1D	2.32	1.39	1.34

All (15) bond angle outliers are listed below:

Mol	Chain	Res	Type	Atoms	Z	Observed(°)	Ideal(°)
5	A	603	EL5	C2A-C3A-C4A	-4.43	102.96	107.81
5	B	603	EL5	CHD-C1D-C2D	4.31	135.47	126.97
5	B	603	EL5	CHD-C1D-ND	-4.09	116.65	130.40
5	B	603	EL5	CHC-C4B-NB	-4.02	123.24	128.83
5	A	603	EL5	CHC-C4B-NB	-3.85	123.48	128.83
5	A	603	EL5	CHD-C1D-C2D	3.80	134.46	126.97
5	A	603	EL5	CHD-C1D-ND	-3.73	117.87	130.40
5	B	603	EL5	C2A-C3A-C4A	-3.69	103.77	107.81
5	A	603	EL5	OA-C1A-C2A	3.42	129.59	126.28
5	A	603	EL5	CMD-C2D-C1D	3.15	128.10	124.17
5	B	603	EL5	OA-C1A-C2A	2.89	129.07	126.28
5	B	603	EL5	CMD-C2D-C1D	2.83	127.70	124.17
5	B	603	EL5	CBC-CAC-C2C	2.72	117.26	112.62
5	A	603	EL5	CBC-CAC-C2C	2.71	117.24	112.62
5	A	603	EL5	CAA-C3A-C4A	2.38	129.23	126.36

There are no chirality outliers.

All (25) torsion outliers are listed below:

Mol	Chain	Res	Type	Atoms
5	A	603	EL5	C2C-C1C-CHC-C4B
5	A	603	EL5	C2D-C1D-CHD-C4C
5	A	603	EL5	ND-C1D-CHD-C4C
5	A	603	EL5	NC-C4C-CHD-C1D
5	B	603	EL5	C2C-C1C-CHC-C4B
5	B	603	EL5	NC-C1C-CHC-C4B
5	B	603	EL5	C2D-C1D-CHD-C4C
5	B	603	EL5	ND-C1D-CHD-C4C
5	B	603	EL5	NC-C4C-CHD-C1D
3	A	601	PEG	O2-C3-C4-O4
3	B	601	PEG	O2-C3-C4-O4

Continued on next page...

Continued from previous page...

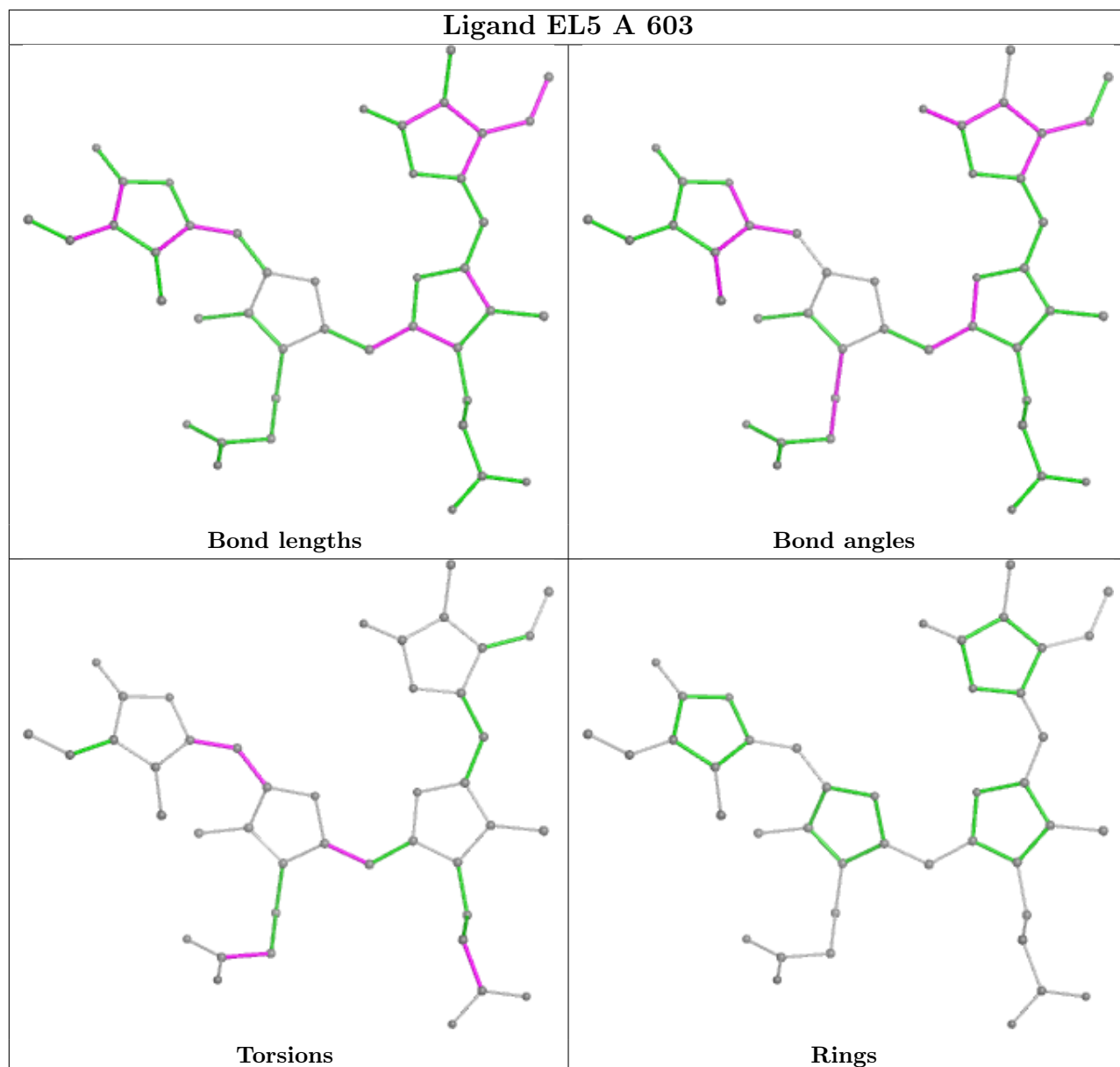
Mol	Chain	Res	Type	Atoms
3	A	601	PEG	O1-C1-C2-O2
3	B	601	PEG	C1-C2-O2-C3
4	B	602	MPD	C2-C3-C4-O4
4	A	602	MPD	CM-C2-C3-C4
3	B	601	PEG	O1-C1-C2-O2
5	A	603	EL5	CAB-CBB-CGB-O2B
5	B	603	EL5	CAB-CBB-CGB-O1B
5	A	603	EL5	CAB-CBB-CGB-O1B
5	B	603	EL5	CAB-CBB-CGB-O2B
3	B	601	PEG	C4-C3-O2-C2
4	B	602	MPD	O2-C2-C3-C4
4	B	602	MPD	C2-C3-C4-C5
5	A	603	EL5	CAC-CBC-CGC-O2C
4	A	602	MPD	C2-C3-C4-O4

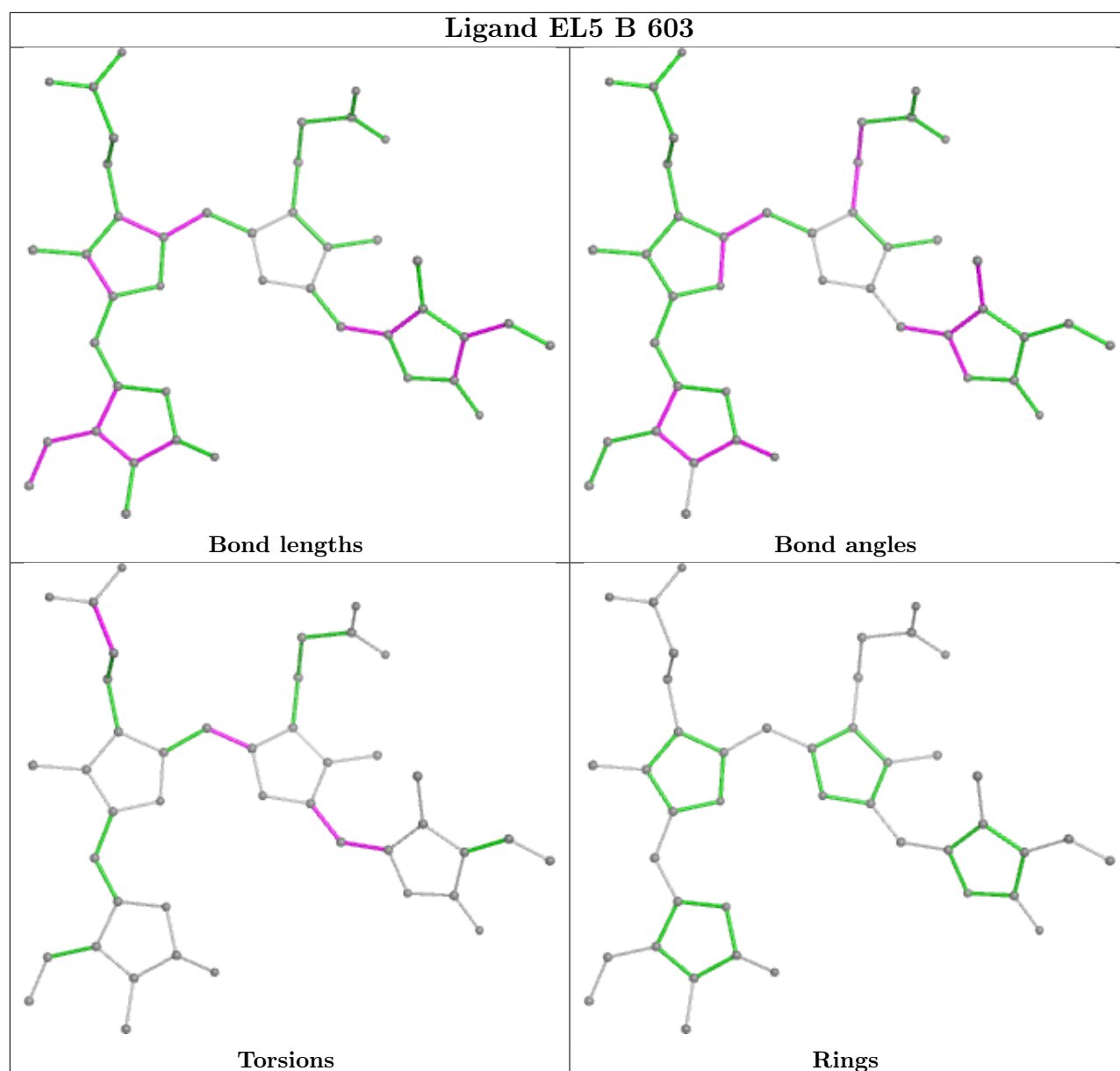
There are no ring outliers.

3 monomers are involved in 8 short contacts:

Mol	Chain	Res	Type	Clashes	Symm-Clashes
4	A	602	MPD	2	0
4	B	602	MPD	3	0
3	B	601	PEG	3	0

The following is a two-dimensional graphical depiction of Mogul quality analysis of bond lengths, bond angles, torsion angles, and ring geometry for all instances of the Ligand of Interest. In addition, ligands with molecular weight > 250 and outliers as shown on the validation Tables will also be included. For torsion angles, if less than 5% of the Mogul distribution of torsion angles is within 10 degrees of the torsion angle in question, then that torsion angle is considered an outlier. Any bond that is central to one or more torsion angles identified as an outlier by Mogul will be highlighted in the graph. For rings, the root-mean-square deviation (RMSD) between the ring in question and similar rings identified by Mogul is calculated over all ring torsion angles. If the average RMSD is greater than 60 degrees and the minimal RMSD between the ring in question and any Mogul-identified rings is also greater than 60 degrees, then that ring is considered an outlier. The outliers are highlighted in purple. The color gray indicates Mogul did not find sufficient equivalents in the CSD to analyse the geometry.





5.7 Other polymers [i](#)

There are no such residues in this entry.

5.8 Polymer linkage issues [i](#)

There are no chain breaks in this entry.

6 Fit of model and data [i](#)

6.1 Protein, DNA and RNA chains [i](#)

In the following table, the column labelled ‘#RSRZ > 2’ contains the number (and percentage) of RSRZ outliers, followed by percent RSRZ outliers for the chain as percentile scores relative to all X-ray entries and entries of similar resolution. The OWAB column contains the minimum, median, 95th percentile and maximum values of the occupancy-weighted average B-factor per residue. The column labelled ‘Q < 0.9’ lists the number of (and percentage) of residues with an average occupancy less than 0.9.

Mol	Chain	Analysed	<RSRZ>	#RSRZ>2	OWAB(Å ²)	Q<0.9
1	A	479/507 (94%)	-0.02	14 (2%) 54 55	17, 32, 56, 78	3 (0%)
2	B	483/507 (95%)	0.07	7 (1%) 73 75	18, 34, 55, 79	4 (0%)
All	All	962/1014 (94%)	0.02	21 (2%) 62 63	17, 33, 55, 79	7 (0%)

All (21) RSRZ outliers are listed below:

Mol	Chain	Res	Type	RSRZ
2	B	80	VAL	3.7
1	A	85	THR	3.4
2	B	503	HIS	3.3
1	A	81	THR	2.9
1	A	80	VAL	2.7
1	A	503	HIS	2.7
2	B	6	TYR	2.7
1	A	7	HIS	2.6
1	A	125	PRO	2.5
1	A	218	GLY	2.3
1	A	98	GLY	2.2
1	A	95	THR	2.2
2	B	374	ASP	2.2
1	A	79	THR	2.2
1	A	373	HIS	2.2
1	A	86	ARG	2.2
1	A	219	THR	2.1
2	B	302	MET	2.1
2	B	230	SER	2.1
1	A	332	HIS	2.1
2	B	55	GLY	2.0

6.2 Non-standard residues in protein, DNA, RNA chains [i](#)

In the following table, the Atoms column lists the number of modelled atoms in the group and the number defined in the chemical component dictionary. The B-factors column lists the minimum, median, 95th percentile and maximum values of B factors of atoms in the group. The column labelled 'Q< 0.9' lists the number of atoms with occupancy less than 0.9.

Mol	Type	Chain	Res	Atoms	RSCC	RSR	B-factors(Å ²)	Q<0.9
2	MLZ	B	446	10/11	0.89	0.11	37,44,45,47	0
2	MLZ	B	310	10/11	0.90	0.12	34,39,50,51	0
1	MLZ	A	446	10/11	0.90	0.12	39,43,46,46	0
2	MLZ	B	174	10/11	0.92	0.10	22,26,37,39	0
2	MLZ	B	207	10/11	0.92	0.09	33,38,46,46	0
1	MLZ	A	310	10/11	0.92	0.10	35,38,45,46	0
2	MLZ	B	154	10/11	0.92	0.10	24,27,31,31	0
1	MLZ	A	461	10/11	0.93	0.10	24,30,43,44	0
1	MLZ	A	154	10/11	0.93	0.09	26,30,36,39	0
2	MLZ	B	432	10/11	0.93	0.11	25,30,41,42	0
1	MLZ	A	207	10/11	0.93	0.09	31,37,47,48	0
1	MLZ	A	467	10/11	0.94	0.10	23,26,31,31	0
2	MLZ	B	180	10/11	0.94	0.08	23,25,26,27	0
1	MLZ	A	180	10/11	0.94	0.10	25,27,31,32	0
1	MLZ	A	432	10/11	0.95	0.08	24,28,39,40	0
2	9IJ	B	192	13/14	0.95	0.06	24,25,26,27	0
1	MLZ	A	174	10/11	0.95	0.09	22,24,33,36	0
2	MLZ	B	467	10/11	0.96	0.07	27,29,34,35	0
1	9IJ	A	192	13/14	0.97	0.06	21,23,25,25	0

6.3 Carbohydrates [i](#)

There are no monosaccharides in this entry.

6.4 Ligands [i](#)

In the following table, the Atoms column lists the number of modelled atoms in the group and the number defined in the chemical component dictionary. The B-factors column lists the minimum, median, 95th percentile and maximum values of B factors of atoms in the group. The column labelled 'Q< 0.9' lists the number of atoms with occupancy less than 0.9.

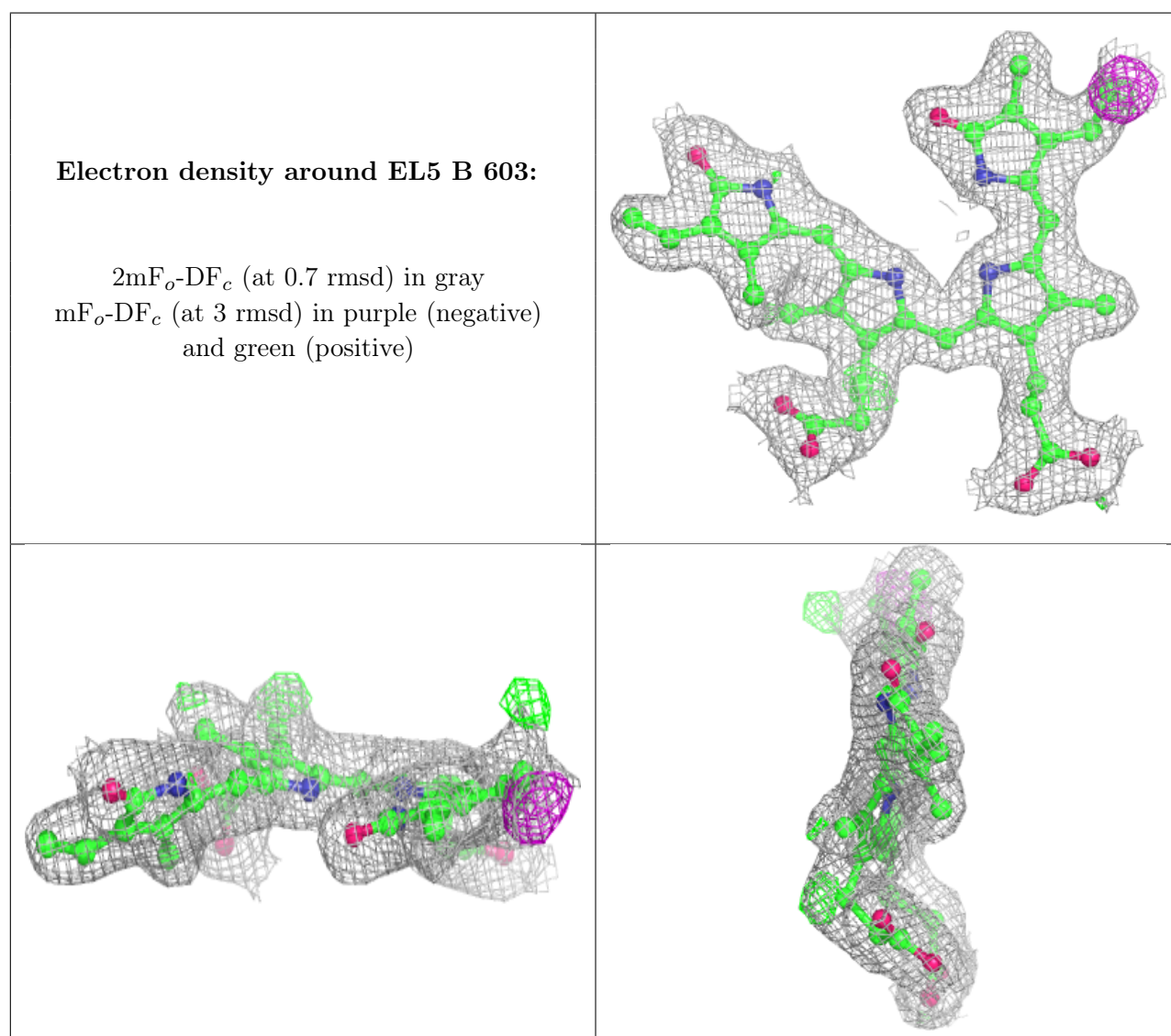
Mol	Type	Chain	Res	Atoms	RSCC	RSR	B-factors(Å ²)	Q<0.9
3	PEG	B	601	7/7	0.75	0.25	44,53,60,62	0
4	MPD	A	602	8/8	0.85	0.15	48,49,51,52	0
3	PEG	A	601	7/7	0.91	0.12	53,55,57,57	0

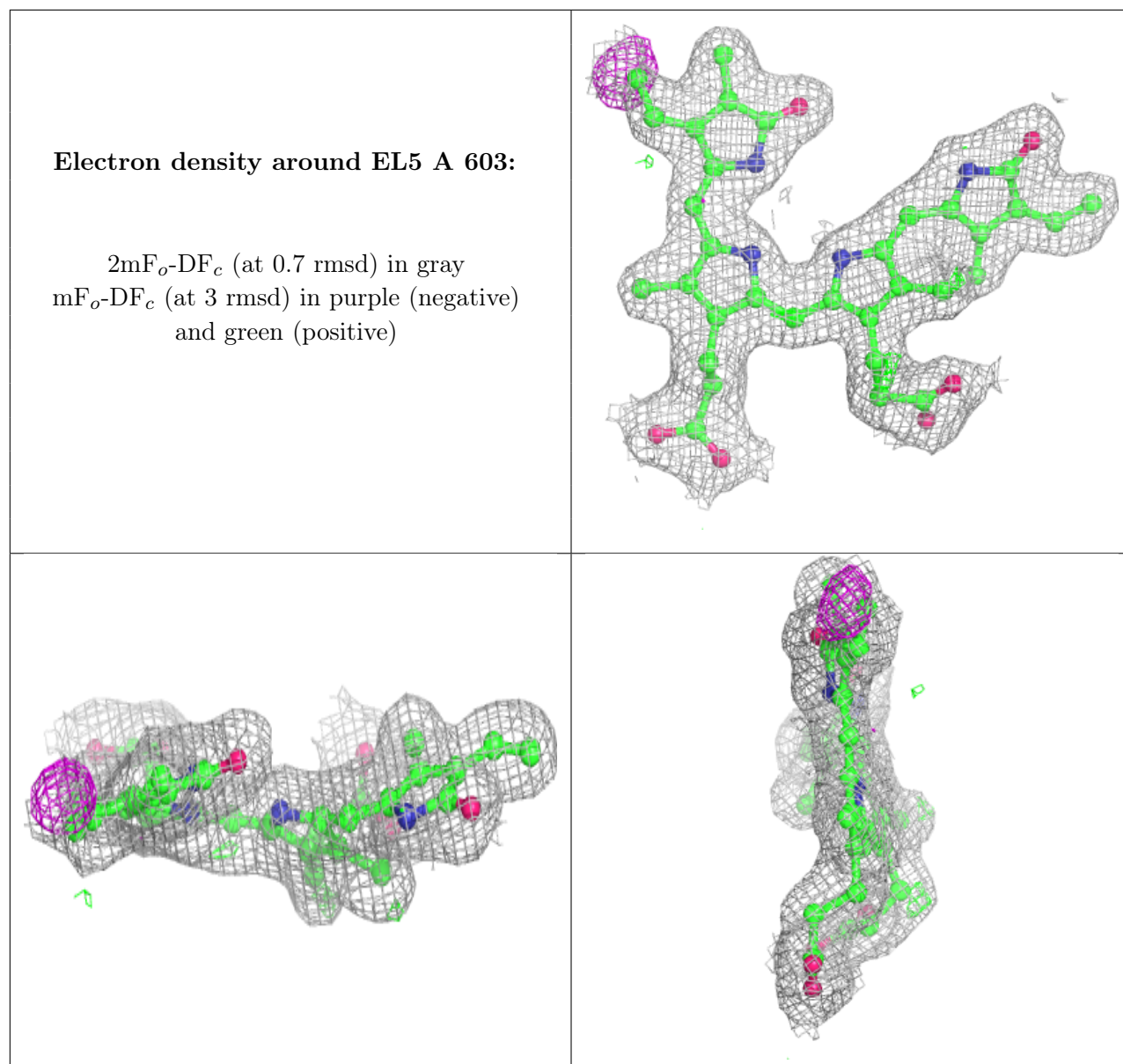
Continued on next page...

Continued from previous page...

Mol	Type	Chain	Res	Atoms	RSCC	RSR	B-factors(\AA^2)	Q<0.9
4	MPD	B	602	8/8	0.91	0.11	42,44,46,49	0
6	CL	A	604	1/1	0.91	0.13	55,55,55,55	0
5	EL5	B	603	43/43	0.93	0.08	23,26,31,38	0
5	EL5	A	603	43/43	0.93	0.08	24,26,28,36	0
6	CL	A	605	1/1	0.93	0.11	52,52,52,52	0

The following is a graphical depiction of the model fit to experimental electron density of all instances of the Ligand of Interest. In addition, ligands with molecular weight > 250 and outliers as shown on the geometry validation Tables will also be included. Each fit is shown from different orientation to approximate a three-dimensional view.





6.5 Other polymers [i](#)

There are no such residues in this entry.