



Full wwPDB X-ray Structure Validation Report ⓘ

Oct 7, 2024 – 12:11 PM EDT

PDB ID : 4GAF
Title : Crystal structure of EBI-005, a chimera of human IL-1beta and IL-1Ra, bound to human Interleukin-1 receptor type 1
Authors : Hou, J.; Townson, S.A.; Kovalchin, J.T.; Masci, A.; Kiner, O.; Shu, Y.; King, B.; Thomas, C.; Garcia, K.C.; Furfine, E.S.; Barnes, T.M.
Deposited on : 2012-07-25
Resolution : 2.15 Å(reported)

This is a Full wwPDB X-ray Structure Validation Report for a publicly released PDB entry.

We welcome your comments at validation@mail.wwpdb.org

A user guide is available at

<https://www.wwpdb.org/validation/2017/XrayValidationReportHelp>

with specific help available everywhere you see the ⓘ symbol.

The types of validation reports are described at

<http://www.wwpdb.org/validation/2017/FAQs#types>.

The following versions of software and data (see [references ⓘ](#)) were used in the production of this report:

MolProbity : 4.02b-467
Mogul : 2022.3.0, CSD as543be (2022)
Xtriage (Phenix) : 1.20.1
EDS : 3.0
Percentile statistics : 20231227.v01 (using entries in the PDB archive December 27th 2023)
CCP4 : 9.0.003 (Gargrove)
Density-Fitness : 1.0.11
Ideal geometry (proteins) : Engh & Huber (2001)
Ideal geometry (DNA, RNA) : Parkinson et al. (1996)
Validation Pipeline (wwPDB-VP) : 2.39

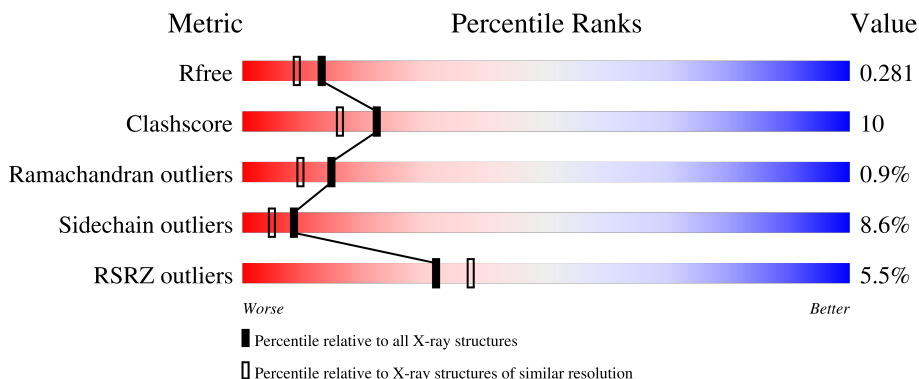
1 Overall quality at a glance

The following experimental techniques were used to determine the structure:

X-RAY DIFFRACTION

The reported resolution of this entry is 2.15 Å.

Percentile scores (ranging between 0-100) for global validation metrics of the entry are shown in the following graphic. The table shows the number of entries on which the scores are based.



Metric	Whole archive (#Entries)	Similar resolution (#Entries, resolution range(Å))
R_{free}	164625	1881 (2.16-2.16)
Clashscore	180529	2047 (2.16-2.16)
Ramachandran outliers	177936	2027 (2.16-2.16)
Sidechain outliers	177891	2026 (2.16-2.16)
RSRZ outliers	164620	1882 (2.16-2.16)

The table below summarises the geometric issues observed across the polymeric chains and their fit to the electron density. The red, orange, yellow and green segments of the lower bar indicate the fraction of residues that contain outliers for ≥ 3 , 2, 1 and 0 types of geometric quality criteria respectively. A grey segment represents the fraction of residues that are not modelled. The numeric value for each fraction is indicated below the corresponding segment, with a dot representing fractions $\leq 5\%$. The upper red bar (where present) indicates the fraction of residues that have poor fit to the electron density. The numeric value is given above the bar.

Mol	Chain	Length	Quality of chain
1	A	153	 3% 76% 23% ..
2	B	319	 7% 69% 22% . .

2 Entry composition [i](#)

There are 5 unique types of molecules in this entry. The entry contains 4001 atoms, of which 0 are hydrogens and 0 are deuteriums.

In the tables below, the ZeroOcc column contains the number of atoms modelled with zero occupancy, the AltConf column contains the number of residues with at least one atom in alternate conformation and the Trace column contains the number of residues modelled with at most 2 atoms.

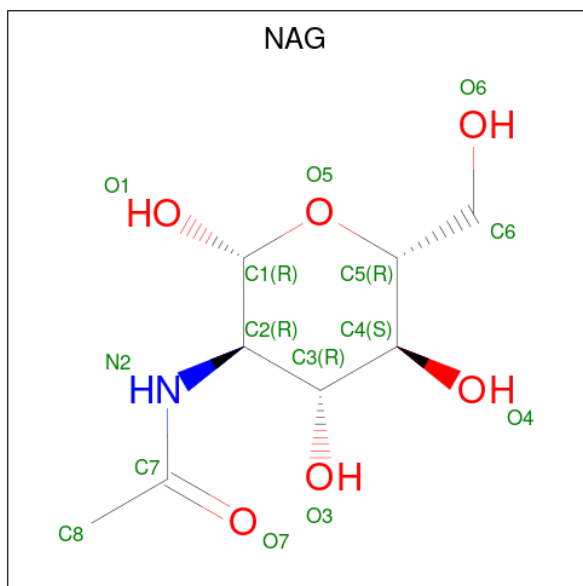
- Molecule 1 is a protein called EBI-005.

Mol	Chain	Residues	Atoms					ZeroOcc	AltConf	Trace
			Total	C	N	O	S			
1	A	152	1255	804	208	234	9	0	3	0

- Molecule 2 is a protein called Interleukin-1 receptor type 1.

Mol	Chain	Residues	Atoms					ZeroOcc	AltConf	Trace
			Total	C	N	O	S			
2	B	306	2480	1585	417	465	13	0	0	0

- Molecule 3 is 2-acetamido-2-deoxy-beta-D-glucopyranose (three-letter code: NAG) (formula: $C_8H_{15}NO_6$).



Mol	Chain	Residues	Atoms				ZeroOcc	AltConf
			Total	C	N	O		
3	B	1	14	8	1	5	0	0
3	B	1	14	8	1	5	0	0

Continued on next page...

Continued from previous page...

Mol	Chain	Residues	Atoms				ZeroOcc	AltConf
3	B	1	Total	C	N	O	0	0
			14	8	1	5		
3	B	1	Total	C	N	O	0	0
			14	8	1	5		

- Molecule 4 is SODIUM ION (three-letter code: NA) (formula: Na).

Mol	Chain	Residues	Atoms		ZeroOcc	AltConf
4	B	1	Total	Na	0	0
			1	1		

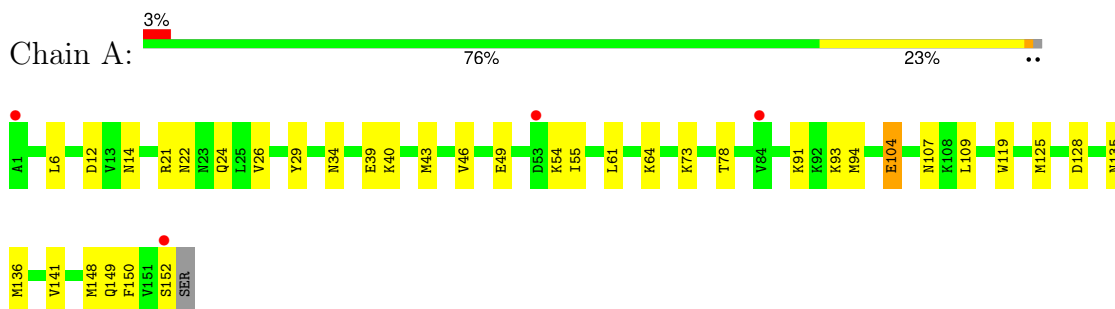
- Molecule 5 is water.

Mol	Chain	Residues	Atoms		ZeroOcc	AltConf
5	A	60	Total	O	0	0
			60	60		
5	B	149	Total	O	0	0
			149	149		

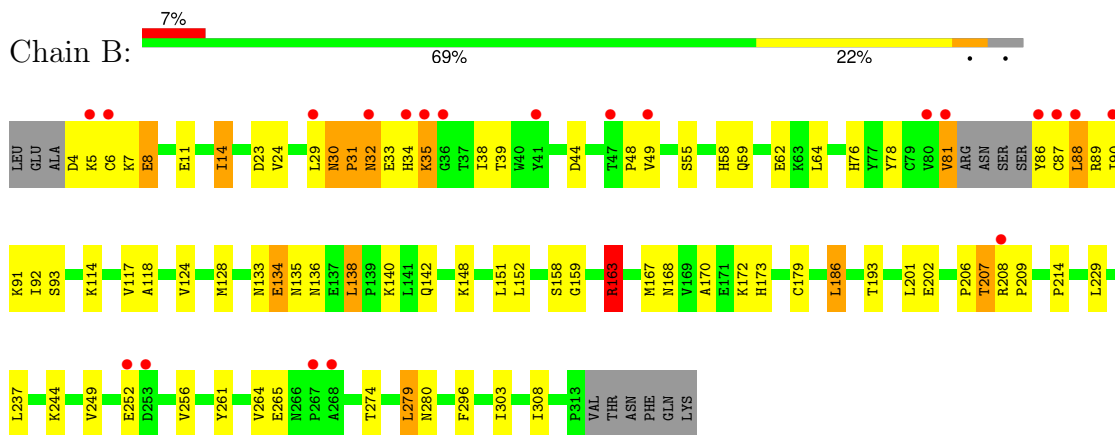
3 Residue-property plots [i](#)

These plots are drawn for all protein, RNA, DNA and oligosaccharide chains in the entry. The first graphic for a chain summarises the proportions of the various outlier classes displayed in the second graphic. The second graphic shows the sequence view annotated by issues in geometry and electron density. Residues are color-coded according to the number of geometric quality criteria for which they contain at least one outlier: green = 0, yellow = 1, orange = 2 and red = 3 or more. A red dot above a residue indicates a poor fit to the electron density ($RSRZ > 2$). Stretches of 2 or more consecutive residues without any outlier are shown as a green connector. Residues present in the sample, but not in the model, are shown in grey.

- Molecule 1: EBI-005



- Molecule 2: Interleukin-1 receptor type 1



4 Data and refinement statistics

Property	Value	Source
Space group	C 2 2 21	Depositor
Cell constants a, b, c, α , β , γ	60.35Å 149.27Å 126.17Å 90.00° 90.00° 90.00°	Depositor
Resolution (Å)	41.86 – 2.15 41.86 – 2.15	Depositor EDS
% Data completeness (in resolution range)	100.0 (41.86-2.15) 99.0 (41.86-2.15)	Depositor EDS
R_{merge}	0.06	Depositor
R_{sym}	(Not available)	Depositor
$\langle I/\sigma(I) \rangle$ ¹	50.38 (at 2.16Å)	Xtrriage
Refinement program	REFMAC 5.5.0109	Depositor
R, R_{free}	0.215 , 0.271 0.222 , 0.281	Depositor DCC
R_{free} test set	1585 reflections (5.07%)	wwPDB-VP
Wilson B-factor (Å ²)	49.4	Xtrriage
Anisotropy	0.058	Xtrriage
Bulk solvent k_{sol} (e/Å ³), B_{sol} (Å ²)	0.35 , 53.8	EDS
L-test for twinning ²	$\langle L \rangle = 0.54$, $\langle L^2 \rangle = 0.38$	Xtrriage
Estimated twinning fraction	No twinning to report.	Xtrriage
F_o, F_c correlation	0.96	EDS
Total number of atoms	4001	wwPDB-VP
Average B, all atoms (Å ²)	53.0	wwPDB-VP

Xtrriage's analysis on translational NCS is as follows: *The largest off-origin peak in the Patterson function is 4.27% of the height of the origin peak. No significant pseudotranslation is detected.*

¹Intensities estimated from amplitudes.

²Theoretical values of $\langle |L| \rangle$, $\langle L^2 \rangle$ for acentric reflections are 0.5, 0.333 respectively for untwinned datasets, and 0.375, 0.2 for perfectly twinned datasets.

5 Model quality [i](#)

5.1 Standard geometry [i](#)

Bond lengths and bond angles in the following residue types are not validated in this section: NAG, NA

The Z score for a bond length (or angle) is the number of standard deviations the observed value is removed from the expected value. A bond length (or angle) with $|Z| > 5$ is considered an outlier worth inspection. RMSZ is the root-mean-square of all Z scores of the bond lengths (or angles).

Mol	Chain	Bond lengths		Bond angles	
		RMSZ	# $ Z > 5$	RMSZ	# $ Z > 5$
1	A	0.93	1/1288 (0.1%)	0.90	0/1738
2	B	1.04	2/2542 (0.1%)	0.94	4/3451 (0.1%)
All	All	1.00	3/3830 (0.1%)	0.93	4/5189 (0.1%)

All (3) bond length outliers are listed below:

Mol	Chain	Res	Type	Atoms	Z	Observed(Å)	Ideal(Å)
2	B	163	ARG	CG-CD	5.33	1.65	1.51
1	A	104	GLU	CB-CG	5.31	1.62	1.52
2	B	261	TYR	CD2-CE2	5.16	1.47	1.39

All (4) bond angle outliers are listed below:

Mol	Chain	Res	Type	Atoms	Z	Observed(°)	Ideal(°)
2	B	24	VAL	CB-CA-C	-7.67	96.83	111.40
2	B	163	ARG	CB-CG-CD	5.59	126.13	111.60
2	B	279	LEU	CA-CB-CG	5.42	127.76	115.30
2	B	31	PRO	N-CA-C	-5.03	99.03	112.10

There are no chirality outliers.

There are no planarity outliers.

5.2 Too-close contacts [i](#)

In the following table, the Non-H and H(model) columns list the number of non-hydrogen atoms and hydrogen atoms in the chain respectively. The H(added) column lists the number of hydrogen atoms added and optimized by MolProbity. The Clashes column lists the number of clashes within the asymmetric unit, whereas Symm-Clashes lists symmetry-related clashes.

Mol	Chain	Non-H	H(model)	H(added)	Clashes	Symm-Clashes
1	A	1255	0	1258	25	0
2	B	2480	0	2425	60	0
3	B	56	0	52	0	0
4	B	1	0	0	0	0
5	A	60	0	0	2	0
5	B	149	0	0	13	0
All	All	4001	0	3735	79	0

The all-atom clashscore is defined as the number of clashes found per 1000 atoms (including hydrogen atoms). The all-atom clashscore for this structure is 10.

All (79) close contacts within the same asymmetric unit are listed below, sorted by their clash magnitude.

Atom-1	Atom-2	Interatomic distance (Å)	Clash overlap (Å)
1:A:34:ASN:HD21	2:B:14:ILE:H	1.05	1.00
2:B:170:ALA:H	2:B:173:HIS:HD2	1.20	0.89
2:B:128:MET:HB3	2:B:138:LEU:HD21	1.51	0.89
2:B:168:ASN:HB3	5:B:723:HOH:O	1.72	0.87
1:A:21[A]:ARG:NH2	2:B:11:GLU:OE2	2.15	0.78
2:B:163:ARG:HH11	2:B:163:ARG:HG3	1.52	0.74
2:B:31:PRO:O	2:B:32:ASN:CG	2.28	0.71
1:A:34:ASN:HD21	2:B:14:ILE:N	1.83	0.70
2:B:163:ARG:HH11	2:B:163:ARG:CG	2.03	0.70
2:B:274:THR:HG22	5:B:732:HOH:O	1.92	0.69
2:B:55:SER:O	2:B:58:HIS:HD2	1.76	0.67
1:A:93:LYS:HE2	2:B:252:GLU:OE1	1.94	0.66
2:B:170:ALA:H	2:B:173:HIS:CD2	2.10	0.66
1:A:22:ASN:HB3	5:A:254:HOH:O	1.95	0.65
2:B:35:LYS:HE3	5:B:743:HOH:O	1.98	0.63
1:A:21[B]:ARG:NH1	1:A:128:ASP:O	2.33	0.61
2:B:30:ASN:HB2	2:B:33:GLU:OE1	2.00	0.61
2:B:81:VAL:HG13	2:B:88:LEU:HB3	1.84	0.59
2:B:114:LYS:HD3	2:B:201:LEU:HD21	1.86	0.57
2:B:44:ASP:OD1	2:B:76:HIS:HE1	1.87	0.57
2:B:237:LEU:HD11	2:B:265:GLU:HB2	1.87	0.57
2:B:81:VAL:HG22	2:B:81:VAL:O	2.06	0.56
2:B:31:PRO:O	2:B:32:ASN:CB	2.54	0.56
2:B:34:HIS:O	2:B:35:LYS:CB	2.54	0.56
2:B:49:VAL:HG23	2:B:59:GLN:HB2	1.88	0.55
2:B:133:ASN:O	2:B:136:ASN:N	2.39	0.55
2:B:207:THR:HG22	5:B:729:HOH:O	2.06	0.55
2:B:93:SER:O	5:B:741:HOH:O	2.18	0.54

Continued on next page...

Continued from previous page...

Atom-1	Atom-2	Interatomic distance (Å)	Clash overlap (Å)
1:A:91:LYS:HE3	1:A:93:LYS:O	2.09	0.53
1:A:24:GLN:HE22	2:B:32:ASN:HD22	1.56	0.53
2:B:39:THR:CG2	2:B:48:PRO:HB3	2.39	0.53
1:A:43:MET:HE3	1:A:148:MET:HE1	1.90	0.53
1:A:6:LEU:HD13	1:A:150:PHE:CE1	2.44	0.53
2:B:91:LYS:O	2:B:92:ILE:HD13	2.09	0.53
2:B:186:LEU:N	2:B:186:LEU:HD23	2.23	0.52
2:B:87:CYS:SG	2:B:88:LEU:N	2.84	0.51
2:B:31:PRO:HD3	5:B:737:HOH:O	2.11	0.51
2:B:35:LYS:O	2:B:35:LYS:HD2	2.10	0.50
1:A:43:MET:HE1	1:A:148:MET:HE3	1.92	0.50
2:B:31:PRO:O	2:B:32:ASN:ND2	2.45	0.49
2:B:44:ASP:OD1	2:B:76:HIS:CE1	2.65	0.49
2:B:134:GLU:HA	2:B:136:ASN:H	1.78	0.49
2:B:179:CYS:O	2:B:193:THR:HA	2.14	0.48
1:A:21[B]:ARG:HG2	1:A:26:VAL:HG21	1.95	0.48
2:B:88:LEU:HD11	5:B:728:HOH:O	2.12	0.48
2:B:38:ILE:HD12	2:B:62:GLU:HB3	1.97	0.47
2:B:170:ALA:N	2:B:173:HIS:HD2	2.01	0.47
2:B:152:LEU:HD13	2:B:159:GLY:HA3	1.97	0.47
1:A:43:MET:CE	1:A:148:MET:HE1	2.45	0.47
2:B:163:ARG:CG	2:B:163:ARG:NH1	2.76	0.46
2:B:7:LYS:HG2	2:B:8:GLU:N	2.31	0.46
2:B:86:TYR:HB3	5:B:743:HOH:O	2.15	0.46
1:A:46:VAL:HG11	1:A:94:MET:HG3	1.98	0.45
1:A:73:LYS:HB3	1:A:78:THR:OG1	2.16	0.45
2:B:244:LYS:HD3	2:B:296:PHE:CE2	2.52	0.45
1:A:43:MET:CE	1:A:148:MET:CE	2.95	0.44
2:B:89:ARG:NH2	5:B:711:HOH:O	2.49	0.44
1:A:119:TRP:CE2	1:A:135:ASN:HB3	2.52	0.44
1:A:43:MET:HE1	1:A:148:MET:CE	2.48	0.44
2:B:208:ARG:HA	2:B:209:PRO:HD3	1.91	0.44
2:B:280:ASN:HB3	5:B:620:HOH:O	2.18	0.44
2:B:39:THR:HG22	2:B:48:PRO:HB3	1.99	0.43
2:B:142:GLN:HB3	5:B:742:HOH:O	2.18	0.43
1:A:104:GLU:HB2	1:A:109:LEU:CD2	2.49	0.43
2:B:214:PRO:CB	2:B:308:ILE:HG13	2.49	0.43
2:B:274:THR:CG2	5:B:732:HOH:O	2.59	0.43
1:A:29:TYR:HD1	5:A:260:HOH:O	2.02	0.42
1:A:104:GLU:HB2	1:A:109:LEU:HD23	2.01	0.42
2:B:117:VAL:CG1	2:B:118:ALA:N	2.83	0.42

Continued on next page...

Continued from previous page...

Atom-1	Atom-2	Interatomic distance (Å)	Clash overlap (Å)
1:A:54:LYS:O	1:A:55:ILE:HD13	2.19	0.42
1:A:12:ASP:OD1	1:A:14:ASN:N	2.47	0.41
2:B:264:VAL:HG12	2:B:274:THR:OG1	2.20	0.41
1:A:21[B]:ARG:HD2	2:B:30:ASN:ND2	2.35	0.41
2:B:81:VAL:HG13	2:B:88:LEU:CB	2.50	0.41
2:B:124:VAL:HG22	2:B:163:ARG:HD2	2.01	0.41
1:A:39:GLU:OE1	1:A:64:LYS:HE3	2.21	0.41
2:B:23:ASP:HB2	5:B:604:HOH:O	2.20	0.40
2:B:14:ILE:H	2:B:14:ILE:HG12	1.81	0.40
2:B:78:TYR:HA	2:B:90:ILE:O	2.22	0.40

There are no symmetry-related clashes.

5.3 Torsion angles [i](#)

5.3.1 Protein backbone [i](#)

In the following table, the Percentiles column shows the percent Ramachandran outliers of the chain as a percentile score with respect to all X-ray entries followed by that with respect to entries of similar resolution.

The Analysed column shows the number of residues for which the backbone conformation was analysed, and the total number of residues.

Mol	Chain	Analysed	Favoured	Allowed	Outliers	Percentiles	
1	A	153/153 (100%)	149 (97%)	4 (3%)	0	100	100
2	B	302/319 (95%)	285 (94%)	13 (4%)	4 (1%)	10	5
All	All	455/472 (96%)	434 (95%)	17 (4%)	4 (1%)	14	9

All (4) Ramachandran outliers are listed below:

Mol	Chain	Res	Type
2	B	35	LYS
2	B	32	ASN
2	B	5	LYS
2	B	206	PRO

5.3.2 Protein sidechains [i](#)

In the following table, the Percentiles column shows the percent sidechain outliers of the chain as a percentile score with respect to all X-ray entries followed by that with respect to entries of similar resolution.

The Analysed column shows the number of residues for which the sidechain conformation was analysed, and the total number of residues.

Mol	Chain	Analysed	Rotameric	Outliers	Percentiles	
1	A	144/142 (101%)	135 (94%)	9 (6%)	15	10
2	B	278/290 (96%)	251 (90%)	27 (10%)	6	3
All	All	422/432 (98%)	386 (92%)	36 (8%)	8	5

All (36) residues with a non-rotameric sidechain are listed below:

Mol	Chain	Res	Type
1	A	40	LYS
1	A	49	GLU
1	A	61	LEU
1	A	107	ASN
1	A	125	MET
1	A	136	MET
1	A	141	VAL
1	A	149	GLN
1	A	152	SER
2	B	4	ASP
2	B	6	CYS
2	B	8	GLU
2	B	14	ILE
2	B	29	LEU
2	B	30	ASN
2	B	64	LEU
2	B	81	VAL
2	B	88	LEU
2	B	134	GLU
2	B	135	ASN
2	B	138	LEU
2	B	140	LYS
2	B	148	LYS
2	B	151	LEU
2	B	158	SER
2	B	163	ARG
2	B	167	MET

Continued on next page...

Continued from previous page...

Mol	Chain	Res	Type
2	B	172	LYS
2	B	186	LEU
2	B	202	GLU
2	B	207	THR
2	B	229	LEU
2	B	249	VAL
2	B	256	VAL
2	B	279	LEU
2	B	303	ILE

Sometimes sidechains can be flipped to improve hydrogen bonding and reduce clashes. All (10) such sidechains are listed below:

Mol	Chain	Res	Type
1	A	34	ASN
2	B	30	ASN
2	B	32	ASN
2	B	53	GLN
2	B	58	HIS
2	B	76	HIS
2	B	154	ASN
2	B	173	HIS
2	B	189	GLN
2	B	301	HIS

5.3.3 RNA [i](#)

There are no RNA molecules in this entry.

5.4 Non-standard residues in protein, DNA, RNA chains [i](#)

There are no non-standard protein/DNA/RNA residues in this entry.

5.5 Carbohydrates [i](#)

There are no oligosaccharides in this entry.

5.6 Ligand geometry [i](#)

Of 5 ligands modelled in this entry, 1 is monoatomic - leaving 4 for Mogul analysis.

In the following table, the Counts columns list the number of bonds (or angles) for which Mogul statistics could be retrieved, the number of bonds (or angles) that are observed in the model and the number of bonds (or angles) that are defined in the Chemical Component Dictionary. The Link column lists molecule types, if any, to which the group is linked. The Z score for a bond length (or angle) is the number of standard deviations the observed value is removed from the expected value. A bond length (or angle) with $|Z| > 2$ is considered an outlier worth inspection. RMSZ is the root-mean-square of all Z scores of the bond lengths (or angles).

Mol	Type	Chain	Res	Link	Bond lengths			Bond angles		
					Counts	RMSZ	# Z > 2	Counts	RMSZ	# Z > 2
3	NAG	B	501	2	14,14,15	0.88	0	17,19,21	2.65	7 (41%)
3	NAG	B	504	2	14,14,15	0.77	0	17,19,21	1.98	3 (17%)
3	NAG	B	503	2	14,14,15	0.97	1 (7%)	17,19,21	2.11	6 (35%)
3	NAG	B	502	2	14,14,15	0.61	0	17,19,21	1.43	1 (5%)

In the following table, the Chirals column lists the number of chiral outliers, the number of chiral centers analysed, the number of these observed in the model and the number defined in the Chemical Component Dictionary. Similar counts are reported in the Torsion and Rings columns. '-' means no outliers of that kind were identified.

Mol	Type	Chain	Res	Link	Chirals	Torsions	Rings
3	NAG	B	501	2	-	2/6/23/26	0/1/1/1
3	NAG	B	504	2	-	0/6/23/26	0/1/1/1
3	NAG	B	503	2	-	2/6/23/26	0/1/1/1
3	NAG	B	502	2	-	0/6/23/26	0/1/1/1

All (1) bond length outliers are listed below:

Mol	Chain	Res	Type	Atoms	Z	Observed(Å)	Ideal(Å)
3	B	503	NAG	O5-C1	-2.87	1.38	1.43

All (17) bond angle outliers are listed below:

Mol	Chain	Res	Type	Atoms	Z	Observed(°)	Ideal(°)
3	B	501	NAG	C1-O5-C5	6.42	120.79	112.19
3	B	504	NAG	C2-N2-C7	-5.78	115.16	122.90
3	B	501	NAG	O5-C1-C2	-5.28	103.12	111.29
3	B	502	NAG	C1-O5-C5	4.76	118.56	112.19
3	B	503	NAG	C1-O5-C5	4.72	118.52	112.19
3	B	503	NAG	C2-N2-C7	3.99	128.25	122.90
3	B	503	NAG	C6-C5-C4	-2.99	105.67	113.02
3	B	501	NAG	C6-C5-C4	-2.95	105.77	113.02
3	B	501	NAG	O3-C3-C4	-2.72	103.97	110.38

Continued on next page...

Continued from previous page...

Mol	Chain	Res	Type	Atoms	Z	Observed(°)	Ideal(°)
3	B	501	NAG	C8-C7-N2	-2.70	111.64	116.12
3	B	501	NAG	C2-N2-C7	2.68	126.49	122.90
3	B	501	NAG	O5-C5-C4	2.61	117.17	110.83
3	B	504	NAG	O5-C1-C2	-2.54	107.36	111.29
3	B	504	NAG	O4-C4-C5	2.53	115.56	109.32
3	B	503	NAG	C4-C3-C2	2.47	114.64	111.02
3	B	503	NAG	O4-C4-C3	-2.17	105.27	110.38
3	B	503	NAG	O3-C3-C2	2.16	113.89	109.40

There are no chirality outliers.

All (4) torsion outliers are listed below:

Mol	Chain	Res	Type	Atoms
3	B	503	NAG	O5-C5-C6-O6
3	B	501	NAG	O5-C5-C6-O6
3	B	501	NAG	C4-C5-C6-O6
3	B	503	NAG	C4-C5-C6-O6

There are no ring outliers.

No monomer is involved in short contacts.

5.7 Other polymers [i](#)

There are no such residues in this entry.

5.8 Polymer linkage issues [i](#)

There are no chain breaks in this entry.

6 Fit of model and data [i](#)

6.1 Protein, DNA and RNA chains [i](#)

In the following table, the column labelled ‘#RSRZ > 2’ contains the number (and percentage) of RSRZ outliers, followed by percent RSRZ outliers for the chain as percentile scores relative to all X-ray entries and entries of similar resolution. The OWAB column contains the minimum, median, 95th percentile and maximum values of the occupancy-weighted average B-factor per residue. The column labelled ‘Q < 0.9’ lists the number of (and percentage) of residues with an average occupancy less than 0.9.

Mol	Chain	Analysed	<RSRZ>	#RSRZ>2	OWAB(Å ²)	Q<0.9
1	A	152/153 (99%)	0.15	4 (2%) 57 62	23, 50, 78, 93	3 (1%)
2	B	306/319 (95%)	0.35	21 (6%) 24 29	29, 50, 86, 113	0
All	All	458/472 (97%)	0.28	25 (5%) 32 37	23, 50, 84, 113	3 (0%)

All (25) RSRZ outliers are listed below:

Mol	Chain	Res	Type	RSRZ
2	B	81	VAL	3.6
2	B	268	ALA	3.6
1	A	1	ALA	3.3
2	B	29	LEU	3.1
2	B	41	TYR	3.1
1	A	152	SER	2.9
2	B	267	PRO	2.8
2	B	88	LEU	2.8
2	B	36	GLY	2.8
2	B	6	CYS	2.8
2	B	47	THR	2.7
2	B	253	ASP	2.6
2	B	90	ILE	2.6
2	B	80	VAL	2.6
2	B	87	CYS	2.6
2	B	86	TYR	2.4
2	B	32	ASN	2.4
1	A	53	ASP	2.4
2	B	35	LYS	2.3
2	B	5	LYS	2.3
2	B	252	GLU	2.3
2	B	49	VAL	2.2
1	A	84	VAL	2.2
2	B	208	ARG	2.0

Continued on next page...

Continued from previous page...

Mol	Chain	Res	Type	RSRZ
2	B	34	HIS	2.0

6.2 Non-standard residues in protein, DNA, RNA chains [i](#)

There are no non-standard protein/DNA/RNA residues in this entry.

6.3 Carbohydrates [i](#)

There are no monosaccharides in this entry.

6.4 Ligands [i](#)

In the following table, the Atoms column lists the number of modelled atoms in the group and the number defined in the chemical component dictionary. The B-factors column lists the minimum, median, 95th percentile and maximum values of B factors of atoms in the group. The column labelled 'Q< 0.9' lists the number of atoms with occupancy less than 0.9.

Mol	Type	Chain	Res	Atoms	RSCC	RSR	B-factors(Å ²)	Q<0.9
3	NAG	B	504	14/15	0.77	0.12	62,68,71,72	0
3	NAG	B	503	14/15	0.85	0.12	44,57,62,64	0
3	NAG	B	502	14/15	0.89	0.10	53,56,66,70	0
3	NAG	B	501	14/15	0.91	0.08	41,48,57,63	0
4	NA	B	505	1/1	0.95	0.06	34,34,34,34	0

6.5 Other polymers [i](#)

There are no such residues in this entry.