



Full wwPDB X-ray Structure Validation Report ⓘ

Oct 22, 2024 – 04:21 pm BST

PDB ID : 9GAO
Title : Crystal structure of CRBNmidi in complex with 2-(4-(2,6-dioxopiperidin-3-yl)phenoxy)-N-methylacetamide
Authors : Rutter, Z.J.; Kroupova, A.; Zollman, D.; Ciulli, A.
Deposited on : 2024-07-29
Resolution : 1.95 Å(reported)

This is a Full wwPDB X-ray Structure Validation Report for a publicly released PDB entry.

We welcome your comments at validation@mail.wwpdb.org

A user guide is available at

<https://www.wwpdb.org/validation/2017/XrayValidationReportHelp>

with specific help available everywhere you see the ⓘ symbol.

The types of validation reports are described at

<http://www.wwpdb.org/validation/2017/FAQs#types>.

The following versions of software and data (see [references ⓘ](#)) were used in the production of this report:

MolProbity : 4.02b-467
Mogul : 1.8.4, CSD as541be (2020)
Xtriage (Phenix) : 1.13
EDS : 3.0
buster-report : 1.1.7 (2018)
Percentile statistics : 20231227.v01 (using entries in the PDB archive December 27th 2023)
CCP4 : 9.0.003 (Gargrove)
Density-Fitness : 1.0.11
Ideal geometry (proteins) : Engh & Huber (2001)
Ideal geometry (DNA, RNA) : Parkinson et al. (1996)
Validation Pipeline (wwPDB-VP) : 2.39

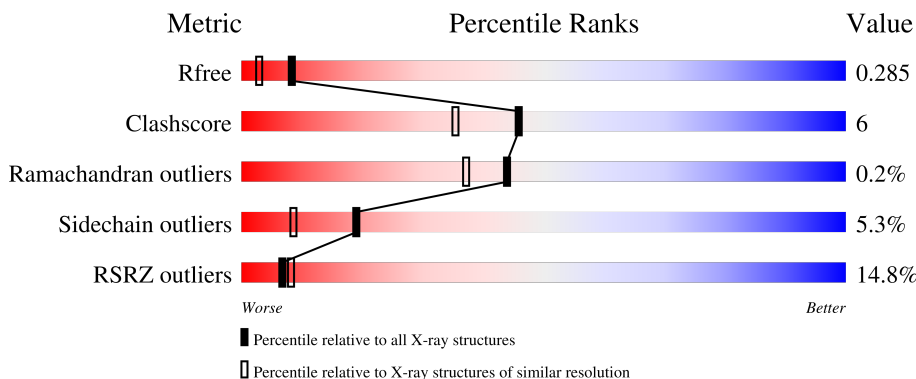
1 Overall quality at a glance i

The following experimental techniques were used to determine the structure:

X-RAY DIFFRACTION

The reported resolution of this entry is 1.95 Å.

Percentile scores (ranging between 0-100) for global validation metrics of the entry are shown in the following graphic. The table shows the number of entries on which the scores are based.



Metric	Whole archive (#Entries)	Similar resolution (#Entries, resolution range(Å))
R_{free}	164625	3187 (1.96-1.96)
Clashscore	180529	3412 (1.96-1.96)
Ramachandran outliers	177936	3390 (1.96-1.96)
Sidechain outliers	177891	3390 (1.96-1.96)
RSRZ outliers	164620	3186 (1.96-1.96)

The table below summarises the geometric issues observed across the polymeric chains and their fit to the electron density. The red, orange, yellow and green segments of the lower bar indicate the fraction of residues that contain outliers for ≥ 3 , 2, 1 and 0 types of geometric quality criteria respectively. A grey segment represents the fraction of residues that are not modelled. The numeric value for each fraction is indicated below the corresponding segment, with a dot representing fractions $\leq 5\%$. The upper red bar (where present) indicates the fraction of residues that have poor fit to the electron density. The numeric value is given above the bar.

Mol	Chain	Length	Quality of chain
1	A	329	<div style="display: flex; align-items: center;"> <div style="width: 16%; height: 10px; background-color: red; margin-right: 5px;"></div> <div style="width: 77%; height: 10px; background-color: green; margin-right: 5px;"></div> <div style="width: 17%; height: 10px; background-color: yellow; margin-right: 5px;"></div> <div style="width: 5%; height: 10px; background-color: grey; margin-right: 5px;"></div> <div style="width: 5%; height: 10px; background-color: grey;"></div> </div>
1	C	329	<div style="display: flex; align-items: center;"> <div style="width: 12%; height: 10px; background-color: red; margin-right: 5px;"></div> <div style="width: 81%; height: 10px; background-color: green; margin-right: 5px;"></div> <div style="width: 14%; height: 10px; background-color: yellow; margin-right: 5px;"></div> <div style="width: 5%; height: 10px; background-color: orange; margin-right: 5px;"></div> <div style="width: 5%; height: 10px; background-color: grey;"></div> </div>

2 Entry composition i

There are 4 unique types of molecules in this entry. The entry contains 5084 atoms, of which 0 are hydrogens and 0 are deuteriums.

In the tables below, the ZeroOcc column contains the number of atoms modelled with zero occupancy, the AltConf column contains the number of residues with at least one atom in alternate conformation and the Trace column contains the number of residues modelled with at most 2 atoms.

- Molecule 1 is a protein called Protein cereblon.

Mol	Chain	Residues	Atoms					ZeroOcc	AltConf	Trace
			Total	C	N	O	S			
1	A	315	2444	1555	416	457	16	0	0	0
1	C	319	2491	1587	430	458	16	0	0	0

There are 32 discrepancies between the modelled and reference sequences:

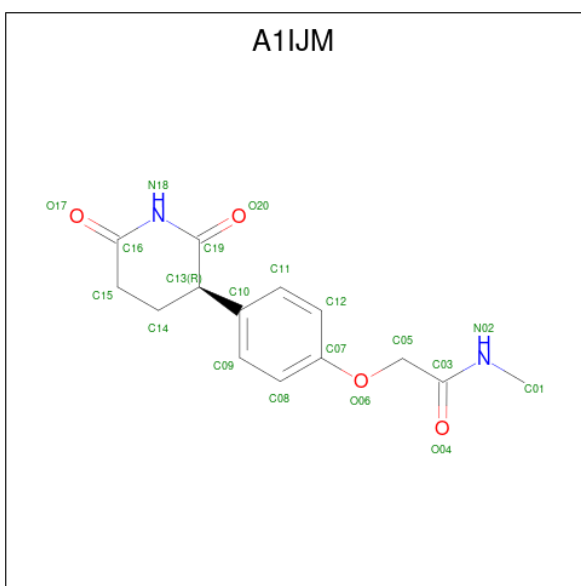
Chain	Residue	Modelled	Actual	Comment	Reference
A	40	SER	-	expression tag	UNP Q96SW2
A	78	ILE	CYS	engineered mutation	UNP Q96SW2
A	92	VAL	ILE	engineered mutation	UNP Q96SW2
A	116	ASN	LYS	engineered mutation	UNP Q96SW2
A	134	GLU	GLN	engineered mutation	UNP Q96SW2
A	246	GLY	-	linker	UNP Q96SW2
A	247	SER	-	linker	UNP Q96SW2
A	248	GLY	-	linker	UNP Q96SW2
A	283	TRP	ARG	engineered mutation	UNP Q96SW2
A	287	ASN	CYS	engineered mutation	UNP Q96SW2
A	293	SER	VAL	engineered mutation	UNP Q96SW2
A	302	ASP	GLY	engineered mutation	UNP Q96SW2
A	342	ARG	LEU	engineered mutation	UNP Q96SW2
A	343	GLU	CYS	engineered mutation	UNP Q96SW2
A	359	ILE	THR	engineered mutation	UNP Q96SW2
A	423	ILE	LEU	engineered mutation	UNP Q96SW2
C	40	SER	-	expression tag	UNP Q96SW2
C	78	ILE	CYS	engineered mutation	UNP Q96SW2
C	92	VAL	ILE	engineered mutation	UNP Q96SW2
C	116	ASN	LYS	engineered mutation	UNP Q96SW2
C	134	GLU	GLN	engineered mutation	UNP Q96SW2
C	246	GLY	-	linker	UNP Q96SW2
C	247	SER	-	linker	UNP Q96SW2
C	248	GLY	-	linker	UNP Q96SW2
C	283	TRP	ARG	engineered mutation	UNP Q96SW2

Continued on next page...

Continued from previous page...

Chain	Residue	Modelled	Actual	Comment	Reference
C	287	ASN	CYS	engineered mutation	UNP Q96SW2
C	293	SER	VAL	engineered mutation	UNP Q96SW2
C	302	ASP	GLY	engineered mutation	UNP Q96SW2
C	342	ARG	LEU	engineered mutation	UNP Q96SW2
C	343	GLU	CYS	engineered mutation	UNP Q96SW2
C	359	ILE	THR	engineered mutation	UNP Q96SW2
C	423	ILE	LEU	engineered mutation	UNP Q96SW2

- Molecule 2 is 2-[4-[(3 {R})-2,6-bis(oxidanylidene)piperidin-3-yl]phenoxy]- {N}-methyl-ethanamide (three-letter code: A1IJM) (formula: C₁₄H₁₆N₂O₄) (labeled as "Ligand of Interest" by depositor).



Mol	Chain	Residues	Atoms			ZeroOcc	AltConf	
			Total	C	N			O
2	A	1	Total	C	N	O	0	0
			20	14	2	4		
2	C	1	Total	C	N	O	0	0
			20	14	2	4		

- Molecule 3 is ZINC ION (three-letter code: ZN) (formula: Zn).

Mol	Chain	Residues	Atoms		ZeroOcc	AltConf
			Total	Zn		
3	A	1	Total	Zn	0	0
			1	1		
3	C	1	Total	Zn	0	0
			1	1		

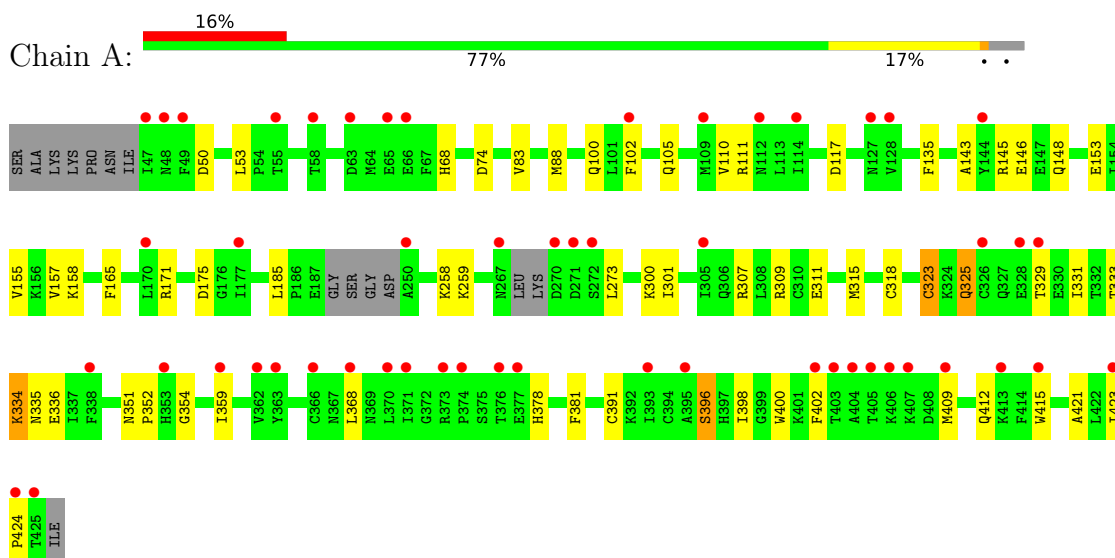
- Molecule 4 is water.

Mol	Chain	Residues	Atoms		ZeroOcc	AltConf
4	A	46	Total 46	O 46	0	0
4	C	61	Total 61	O 61	0	0

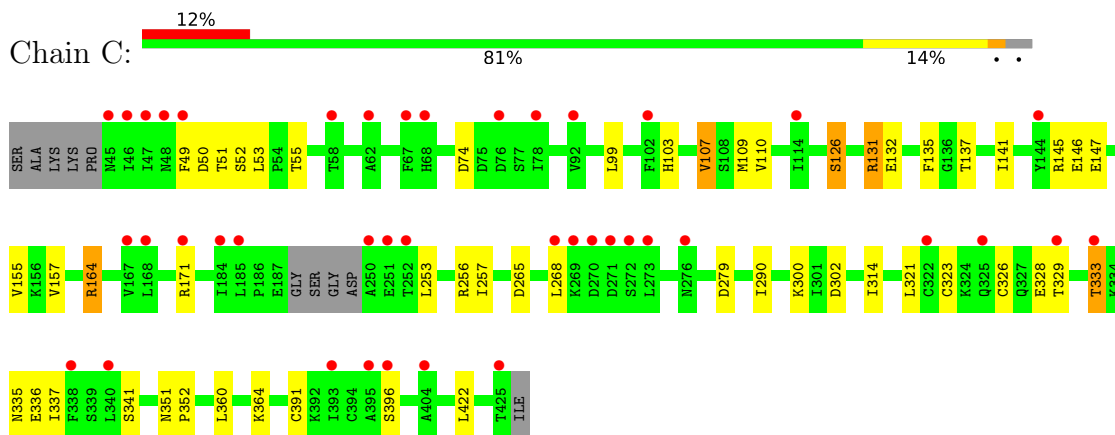
3 Residue-property plots [i](#)

These plots are drawn for all protein, RNA, DNA and oligosaccharide chains in the entry. The first graphic for a chain summarises the proportions of the various outlier classes displayed in the second graphic. The second graphic shows the sequence view annotated by issues in geometry and electron density. Residues are color-coded according to the number of geometric quality criteria for which they contain at least one outlier: green = 0, yellow = 1, orange = 2 and red = 3 or more. A red dot above a residue indicates a poor fit to the electron density ($RSRZ > 2$). Stretches of 2 or more consecutive residues without any outlier are shown as a green connector. Residues present in the sample, but not in the model, are shown in grey.

- Molecule 1: Protein cereblon



- Molecule 1: Protein cereblon



4 Data and refinement statistics

Property	Value	Source
Space group	P 21 21 21	Depositor
Cell constants a, b, c, α , β , γ	53.51Å 94.86Å 147.95Å 90.00° 90.00° 90.00°	Depositor
Resolution (Å)	73.98 – 1.95 73.98 – 1.95	Depositor EDS
% Data completeness (in resolution range)	96.8 (73.98-1.95) 97.1 (73.98-1.95)	Depositor EDS
R_{merge}	0.14	Depositor
R_{sym}	(Not available)	Depositor
$\langle I/\sigma(I) \rangle$ ¹	1.30 (at 1.95Å)	Xtrriage
Refinement program	PHENIX 1.19.2-4158-000	Depositor
R, R_{free}	0.252 , 0.286 0.251 , 0.285	Depositor DCC
R_{free} test set	2780 reflections (4.98%)	wwPDB-VP
Wilson B-factor (Å ²)	40.0	Xtrriage
Anisotropy	0.418	Xtrriage
Bulk solvent k_{sol} (e/Å ³), B_{sol} (Å ²)	0.31 , 29.4	EDS
L-test for twinning ²	$\langle L \rangle = 0.50$, $\langle L^2 \rangle = 0.34$	Xtrriage
Estimated twinning fraction	No twinning to report.	Xtrriage
F_o, F_c correlation	0.95	EDS
Total number of atoms	5084	wwPDB-VP
Average B, all atoms (Å ²)	49.0	wwPDB-VP

Xtrriage's analysis on translational NCS is as follows: *The analyses of the Patterson function reveals a significant off-origin peak that is 68.17 % of the origin peak, indicating pseudo-translational symmetry. The chance of finding a peak of this or larger height randomly in a structure without pseudo-translational symmetry is equal to 4.5665e-06. The detected translational NCS is most likely also responsible for the elevated intensity ratio.*

¹Intensities estimated from amplitudes.

²Theoretical values of $\langle |L| \rangle$, $\langle L^2 \rangle$ for acentric reflections are 0.5, 0.333 respectively for untwinned datasets, and 0.375, 0.2 for perfectly twinned datasets.

5 Model quality

5.1 Standard geometry

Bond lengths and bond angles in the following residue types are not validated in this section: A1IJM, ZN

The Z score for a bond length (or angle) is the number of standard deviations the observed value is removed from the expected value. A bond length (or angle) with $|Z| > 5$ is considered an outlier worth inspection. RMSZ is the root-mean-square of all Z scores of the bond lengths (or angles).

Mol	Chain	Bond lengths		Bond angles	
		RMSZ	# Z >5	RMSZ	# Z >5
1	A	0.26	0/2497	0.51	0/3399
1	C	0.27	0/2544	0.52	0/3457
All	All	0.26	0/5041	0.51	0/6856

There are no bond length outliers.

There are no bond angle outliers.

There are no chirality outliers.

There are no planarity outliers.

5.2 Too-close contacts

In the following table, the Non-H and H(model) columns list the number of non-hydrogen atoms and hydrogen atoms in the chain respectively. The H(added) column lists the number of hydrogen atoms added and optimized by MolProbity. The Clashes column lists the number of clashes within the asymmetric unit, whereas Symm-Clashes lists symmetry-related clashes.

Mol	Chain	Non-H	H(model)	H(added)	Clashes	Symm-Clashes
1	A	2444	0	2352	31	0
1	C	2491	0	2442	27	0
2	A	20	0	0	1	0
2	C	20	0	0	0	0
3	A	1	0	0	0	0
3	C	1	0	0	0	0
4	A	46	0	0	1	0
4	C	61	0	0	0	0
All	All	5084	0	4794	56	0

The all-atom clashscore is defined as the number of clashes found per 1000 atoms (including hydrogen atoms). The all-atom clashscore for this structure is 6.

All (56) close contacts within the same asymmetric unit are listed below, sorted by their clash magnitude.

Atom-1	Atom-2	Interatomic distance (Å)	Clash overlap (Å)
1:A:105:GLN:NE2	1:A:175:ASP:O	2.23	0.70
1:A:423:ILE:HG13	1:A:424:PRO:HD2	1.77	0.66
1:C:321:LEU:HD13	1:C:422:LEU:HD23	1.82	0.61
1:A:398:ILE:HD13	1:A:421:ALA:HB1	1.82	0.61
1:A:336:GLU:N	1:A:336:GLU:OE1	2.32	0.60
1:C:337:ILE:HD13	1:C:360:LEU:HD11	1.84	0.59
1:C:333:THR:HG23	1:C:335:ASN:H	1.69	0.58
1:A:309:ARG:NH2	4:A:604:HOH:O	2.37	0.57
1:A:333:THR:HG22	1:A:335:ASN:H	1.69	0.56
1:C:164:ARG:NH2	1:C:302:ASP:HA	2.23	0.54
1:C:50:ASP:HB3	1:C:53:LEU:HG	1.89	0.53
1:A:311:GLU:O	1:A:315:MET:HG3	2.09	0.53
1:C:164:ARG:HH21	1:C:302:ASP:HA	1.73	0.53
1:A:301:ILE:O	1:A:307:ARG:NH1	2.42	0.51
1:A:378:HIS:O	2:A:501:A1IJM:N18	2.44	0.51
1:A:171:ARG:HH11	1:A:171:ARG:HG3	1.76	0.50
1:C:336:GLU:HG3	1:C:364:LYS:H	1.77	0.50
1:A:165:PHE:HA	1:A:185:LEU:HD23	1.94	0.49
1:A:110:VAL:HG11	1:A:155:VAL:HG11	1.94	0.49
1:C:351:ASN:HB2	1:C:352:PRO:HD2	1.94	0.49
1:C:137:THR:HA	1:C:164:ARG:HA	1.95	0.47
1:A:409:MET:O	1:A:412:GLN:NE2	2.44	0.47
1:A:331:ILE:HG23	1:A:368:LEU:HD13	1.98	0.46
1:C:99:LEU:HB2	1:C:157:VAL:CG1	2.46	0.46
1:C:253:LEU:O	1:C:257:ILE:HG12	2.16	0.45
1:C:141:ILE:HG23	1:C:157:VAL:HG23	1.99	0.45
1:C:326:CYS:O	1:C:328:GLU:N	2.50	0.45
1:C:99:LEU:HB2	1:C:157:VAL:HG12	1.99	0.44
1:A:111:ARG:NH2	1:A:153:GLU:OE2	2.50	0.44
1:A:318:CYS:O	1:A:334:LYS:NZ	2.39	0.44
1:A:143:ALA:HB3	1:A:158:LYS:HB2	1.99	0.44
1:A:323:CYS:HB3	1:A:329:THR:HG23	1.99	0.44
1:A:325:GLN:OE1	1:A:396:SER:OG	2.35	0.44
1:A:175:ASP:O	1:C:131:ARG:HG3	2.17	0.44
1:C:279:ASP:OD1	1:C:279:ASP:N	2.51	0.43
1:C:126:SER:N	1:C:132:GLU:O	2.46	0.43
1:A:329:THR:HG21	1:A:391:CYS:SG	2.59	0.42
1:C:265:ASP:HB2	1:C:337:ILE:O	2.20	0.42
1:A:351:ASN:HB2	1:A:352:PRO:HD2	2.01	0.42
1:A:359:ILE:HD13	1:A:359:ILE:HA	1.93	0.42

Continued on next page...

Continued from previous page...

Atom-1	Atom-2	Interatomic distance (Å)	Clash overlap (Å)
1:C:290:ILE:HG21	1:C:314:ILE:HG21	2.00	0.42
1:A:135:PHE:CE1	1:A:300:LYS:HG2	2.55	0.42
1:C:103:HIS:O	1:C:107:VAL:HG13	2.19	0.42
1:C:110:VAL:HG11	1:C:155:VAL:HG11	2.01	0.42
1:C:52:SER:O	1:C:55:THR:HG22	2.20	0.41
1:A:50:ASP:HB3	1:A:53:LEU:HG	2.03	0.41
1:A:359:ILE:HD11	1:A:400:TRP:HZ3	1.85	0.41
1:A:105:GLN:HE22	1:C:131:ARG:HG3	1.84	0.41
1:C:135:PHE:CE2	1:C:300:LYS:HG2	2.56	0.41
1:C:145:ARG:NH1	1:C:147:GLU:OE2	2.54	0.41
1:A:258:LYS:HG2	1:A:273:LEU:HD13	2.03	0.41
1:A:381:PHE:HD2	1:A:402:PHE:CE2	2.39	0.41
1:C:329:THR:HG21	1:C:391:CYS:SG	2.60	0.41
1:A:100:GLN:HB3	1:A:354:GLY:HA2	2.02	0.41
1:C:51:THR:O	1:C:341:SER:HA	2.21	0.41
1:A:415:TRP:CD1	1:A:415:TRP:N	2.88	0.40

There are no symmetry-related clashes.

5.3 Torsion angles [i](#)

5.3.1 Protein backbone [i](#)

In the following table, the Percentiles column shows the percent Ramachandran outliers of the chain as a percentile score with respect to all X-ray entries followed by that with respect to entries of similar resolution.

The Analysed column shows the number of residues for which the backbone conformation was analysed, and the total number of residues.

Mol	Chain	Analysed	Favoured	Allowed	Outliers	Percentiles	
1	A	309/329 (94%)	297 (96%)	12 (4%)	0	100	100
1	C	315/329 (96%)	306 (97%)	8 (2%)	1 (0%)	37	29
All	All	624/658 (95%)	603 (97%)	20 (3%)	1 (0%)	44	37

All (1) Ramachandran outliers are listed below:

Mol	Chain	Res	Type
1	C	268	LEU

5.3.2 Protein sidechains [i](#)

In the following table, the Percentiles column shows the percent sidechain outliers of the chain as a percentile score with respect to all X-ray entries followed by that with respect to entries of similar resolution.

The Analysed column shows the number of residues for which the sidechain conformation was analysed, and the total number of residues.

Mol	Chain	Analysed	Rotameric	Outliers	Percentiles	
1	A	261/293 (89%)	246 (94%)	15 (6%)	17	7
1	C	267/293 (91%)	254 (95%)	13 (5%)	21	10
All	All	528/586 (90%)	500 (95%)	28 (5%)	19	8

All (28) residues with a non-rotameric sidechain are listed below:

Mol	Chain	Res	Type
1	A	68	HIS
1	A	74	ASP
1	A	83	VAL
1	A	88	MET
1	A	102	PHE
1	A	117	ASP
1	A	145	ARG
1	A	146	GLU
1	A	148	GLN
1	A	157	VAL
1	A	259	LYS
1	A	323	CYS
1	A	325	GLN
1	A	334	LYS
1	A	396	SER
1	C	49	PHE
1	C	74	ASP
1	C	107	VAL
1	C	109	MET
1	C	126	SER
1	C	131	ARG
1	C	146	GLU
1	C	164	ARG
1	C	171	ARG
1	C	256	ARG
1	C	323	CYS
1	C	333	THR

Continued on next page...

Continued from previous page...

Mol	Chain	Res	Type
1	C	396	SER

Sometimes sidechains can be flipped to improve hydrogen bonding and reduce clashes. All (2) such sidechains are listed below:

Mol	Chain	Res	Type
1	A	173	GLN
1	A	367	ASN

5.3.3 RNA [i](#)

There are no RNA molecules in this entry.

5.4 Non-standard residues in protein, DNA, RNA chains [i](#)

There are no non-standard protein/DNA/RNA residues in this entry.

5.5 Carbohydrates [i](#)

There are no oligosaccharides in this entry.

5.6 Ligand geometry [i](#)

Of 4 ligands modelled in this entry, 2 are monoatomic - leaving 2 for Mogul analysis.

In the following table, the Counts columns list the number of bonds (or angles) for which Mogul statistics could be retrieved, the number of bonds (or angles) that are observed in the model and the number of bonds (or angles) that are defined in the Chemical Component Dictionary. The Link column lists molecule types, if any, to which the group is linked. The Z score for a bond length (or angle) is the number of standard deviations the observed value is removed from the expected value. A bond length (or angle) with $|Z| > 2$ is considered an outlier worth inspection. RMSZ is the root-mean-square of all Z scores of the bond lengths (or angles).

Mol	Type	Chain	Res	Link	Bond lengths			Bond angles		
					Counts	RMSZ	$\# Z > 2$	Counts	RMSZ	$\# Z > 2$
2	A1IJM	C	501	-	21,21,21	2.63	7 (33%)	25,28,28	0.92	1 (4%)
2	A1IJM	A	501	-	21,21,21	2.66	7 (33%)	25,28,28	0.89	1 (4%)

In the following table, the Chirals column lists the number of chiral outliers, the number of chiral centers analysed, the number of these observed in the model and the number defined in the

Chemical Component Dictionary. Similar counts are reported in the Torsion and Rings columns. '-' means no outliers of that kind were identified.

Mol	Type	Chain	Res	Link	Chirals	Torsions	Rings
2	A1IJM	C	501	-	-	2/11/24/24	0/2/2/2
2	A1IJM	A	501	-	-	0/11/24/24	0/2/2/2

All (14) bond length outliers are listed below:

Mol	Chain	Res	Type	Atoms	Z	Observed(Å)	Ideal(Å)
2	A	501	A1IJM	C19-N18	7.47	1.50	1.37
2	C	501	A1IJM	C19-N18	7.46	1.50	1.37
2	A	501	A1IJM	C16-N18	7.43	1.50	1.37
2	C	501	A1IJM	C16-N18	7.13	1.49	1.37
2	A	501	A1IJM	C14-C13	-2.58	1.48	1.54
2	C	501	A1IJM	C14-C13	-2.53	1.48	1.54
2	C	501	A1IJM	C03-N02	2.45	1.45	1.34
2	A	501	A1IJM	C03-N02	2.45	1.45	1.34
2	C	501	A1IJM	O20-C19	-2.28	1.18	1.23
2	A	501	A1IJM	O17-C16	-2.16	1.18	1.23
2	A	501	A1IJM	O04-C03	-2.12	1.19	1.23
2	C	501	A1IJM	O17-C16	-2.11	1.19	1.23
2	C	501	A1IJM	O04-C03	-2.09	1.19	1.23
2	A	501	A1IJM	O20-C19	-2.08	1.19	1.23

All (2) bond angle outliers are listed below:

Mol	Chain	Res	Type	Atoms	Z	Observed(°)	Ideal(°)
2	C	501	A1IJM	C16-N18-C19	-2.51	123.11	126.61
2	A	501	A1IJM	C16-N18-C19	-2.03	123.78	126.61

There are no chirality outliers.

All (2) torsion outliers are listed below:

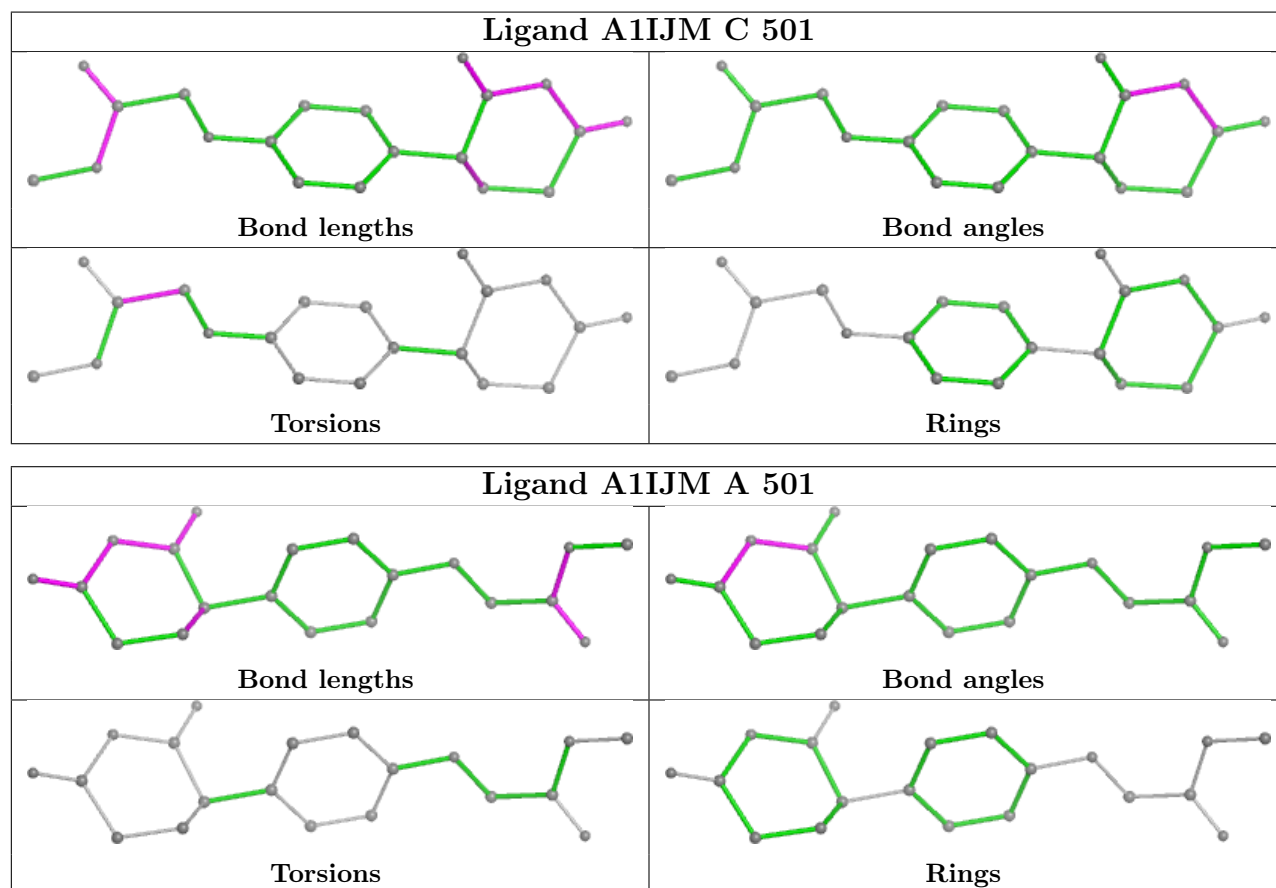
Mol	Chain	Res	Type	Atoms
2	C	501	A1IJM	O04-C03-C05-O06
2	C	501	A1IJM	N02-C03-C05-O06

There are no ring outliers.

1 monomer is involved in 1 short contact:

Mol	Chain	Res	Type	Clashes	Symm-Clashes
2	A	501	A1IJM	1	0

The following is a two-dimensional graphical depiction of Mogul quality analysis of bond lengths, bond angles, torsion angles, and ring geometry for all instances of the Ligand of Interest. In addition, ligands with molecular weight > 250 and outliers as shown on the validation Tables will also be included. For torsion angles, if less than 5% of the Mogul distribution of torsion angles is within 10 degrees of the torsion angle in question, then that torsion angle is considered an outlier. Any bond that is central to one or more torsion angles identified as an outlier by Mogul will be highlighted in the graph. For rings, the root-mean-square deviation (RMSD) between the ring in question and similar rings identified by Mogul is calculated over all ring torsion angles. If the average RMSD is greater than 60 degrees and the minimal RMSD between the ring in question and any Mogul-identified rings is also greater than 60 degrees, then that ring is considered an outlier. The outliers are highlighted in purple. The color gray indicates Mogul did not find sufficient equivalents in the CSD to analyse the geometry.



5.7 Other polymers [\(i\)](#)

There are no such residues in this entry.

5.8 Polymer linkage issues [\(i\)](#)

There are no chain breaks in this entry.

6 Fit of model and data

6.1 Protein, DNA and RNA chains

In the following table, the column labelled ‘#RSRZ > 2’ contains the number (and percentage) of RSRZ outliers, followed by percent RSRZ outliers for the chain as percentile scores relative to all X-ray entries and entries of similar resolution. The OWAB column contains the minimum, median, 95th percentile and maximum values of the occupancy-weighted average B-factor per residue. The column labelled ‘Q < 0.9’ lists the number of (and percentage) of residues with an average occupancy less than 0.9.

Mol	Chain	Analysed	<RSRZ>	#RSRZ>2	OWAB(Å ²)	Q<0.9
1	A	315/329 (95%)	1.10	53 (16%) 5 6	28, 48, 72, 86	0
1	C	319/329 (96%)	1.07	41 (12%) 9 11	28, 47, 70, 84	0
All	All	634/658 (96%)	1.08	94 (14%) 7 8	28, 47, 71, 86	0

All (94) RSRZ outliers are listed below:

Mol	Chain	Res	Type	RSRZ
1	C	250	ALA	5.2
1	A	47	ILE	4.9
1	A	267	ASN	4.6
1	A	338	PHE	4.4
1	A	270	ASP	4.4
1	A	177	ILE	4.3
1	C	49	PHE	4.2
1	A	250	ALA	4.1
1	C	268	LEU	4.0
1	A	363	TYR	4.0
1	C	48	ASN	3.9
1	C	102	PHE	3.7
1	C	46	ILE	3.6
1	C	338	PHE	3.6
1	C	269	LYS	3.6
1	A	393	ILE	3.5
1	C	76	ASP	3.5
1	C	270	ASP	3.3
1	A	425	THR	3.3
1	A	58	THR	3.3
1	A	405	THR	3.3
1	C	425	THR	3.3
1	C	251	GLU	3.2
1	C	78	ILE	3.2

Continued on next page...

Continued from previous page...

Mol	Chain	Res	Type	RSRZ
1	A	326	CYS	3.1
1	C	395	ALA	3.0
1	A	371	ILE	3.0
1	C	272	SER	3.0
1	A	370	LEU	3.0
1	C	168	LEU	3.0
1	A	49	PHE	3.0
1	A	423	ILE	2.9
1	A	413	LYS	2.9
1	C	58	THR	2.9
1	A	415	TRP	2.9
1	C	144	TYR	2.9
1	C	329	THR	2.8
1	A	144	TYR	2.8
1	A	102	PHE	2.8
1	A	170	LEU	2.7
1	A	404	ALA	2.7
1	C	62	ALA	2.7
1	A	374	PRO	2.7
1	A	114	ILE	2.7
1	C	114	ILE	2.7
1	A	373	ARG	2.6
1	C	333	THR	2.6
1	A	368	LEU	2.6
1	C	185	LEU	2.6
1	A	271	ASP	2.6
1	A	395	ALA	2.6
1	A	128	VAL	2.6
1	A	406	LYS	2.5
1	A	362	VAL	2.5
1	C	276	ASN	2.5
1	C	273	LEU	2.5
1	A	109	MET	2.5
1	C	68	HIS	2.5
1	C	184	ILE	2.5
1	A	329	THR	2.5
1	C	393	ILE	2.4
1	A	48	ASN	2.4
1	C	67	PHE	2.4
1	A	366	CYS	2.4
1	A	63	ASP	2.4
1	C	171	ARG	2.4

Continued on next page...

Continued from previous page...

Mol	Chain	Res	Type	RSRZ
1	A	55	THR	2.4
1	A	66	GLU	2.4
1	C	252	THR	2.4
1	A	305	ILE	2.4
1	A	359	ILE	2.4
1	C	47	ILE	2.4
1	A	353	HIS	2.4
1	A	328	GLU	2.3
1	C	340	LEU	2.3
1	C	404	ALA	2.2
1	A	424	PRO	2.2
1	A	377	GLU	2.2
1	C	271	ASP	2.2
1	A	402	PHE	2.2
1	C	325	GLN	2.2
1	A	65	GLU	2.2
1	A	127	ASN	2.2
1	A	376	THR	2.2
1	C	396	SER	2.2
1	C	92	VAL	2.1
1	A	272	SER	2.1
1	A	409	MET	2.1
1	A	112	ASN	2.1
1	C	45	ASN	2.1
1	C	322	CYS	2.1
1	C	167	VAL	2.0
1	A	407	LYS	2.0
1	A	403	THR	2.0

6.2 Non-standard residues in protein, DNA, RNA chains [i](#)

There are no non-standard protein/DNA/RNA residues in this entry.

6.3 Carbohydrates [i](#)

There are no monosaccharides in this entry.

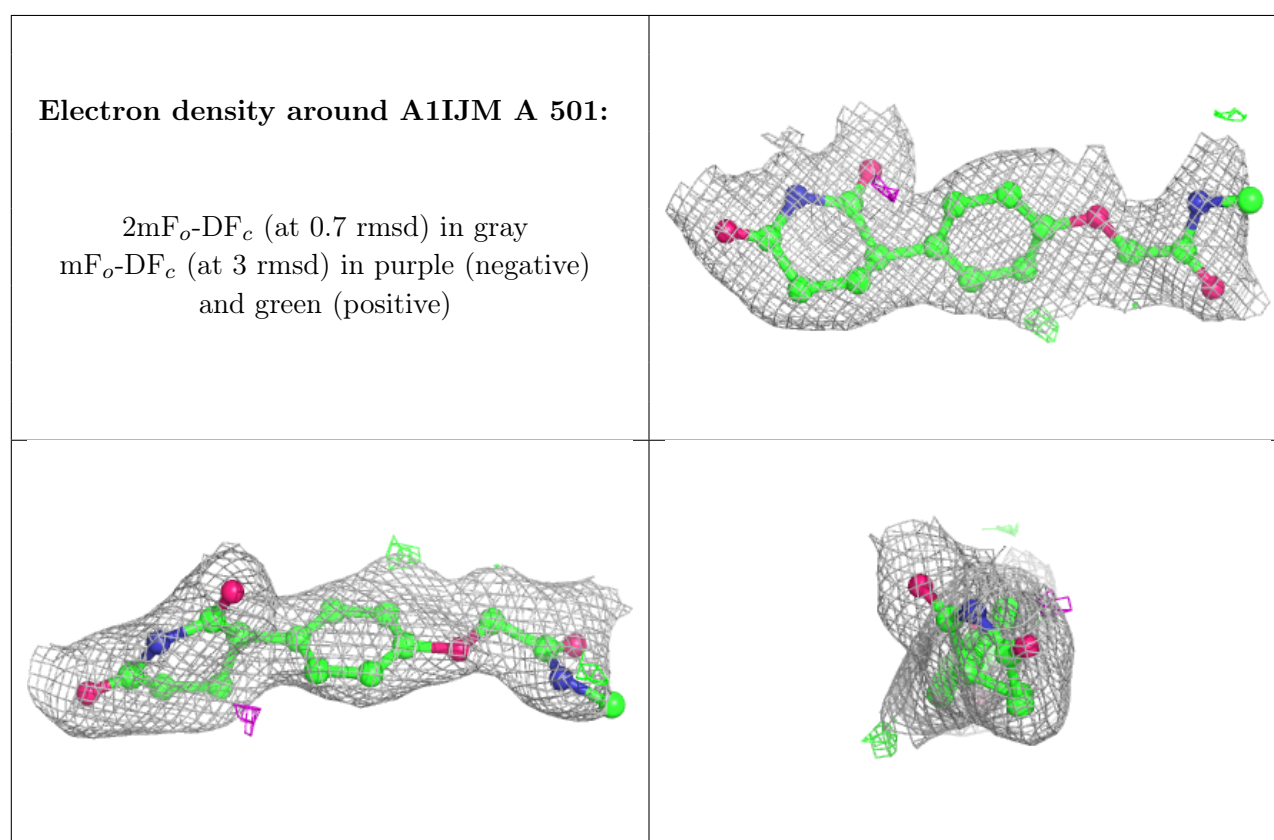
6.4 Ligands [i](#)

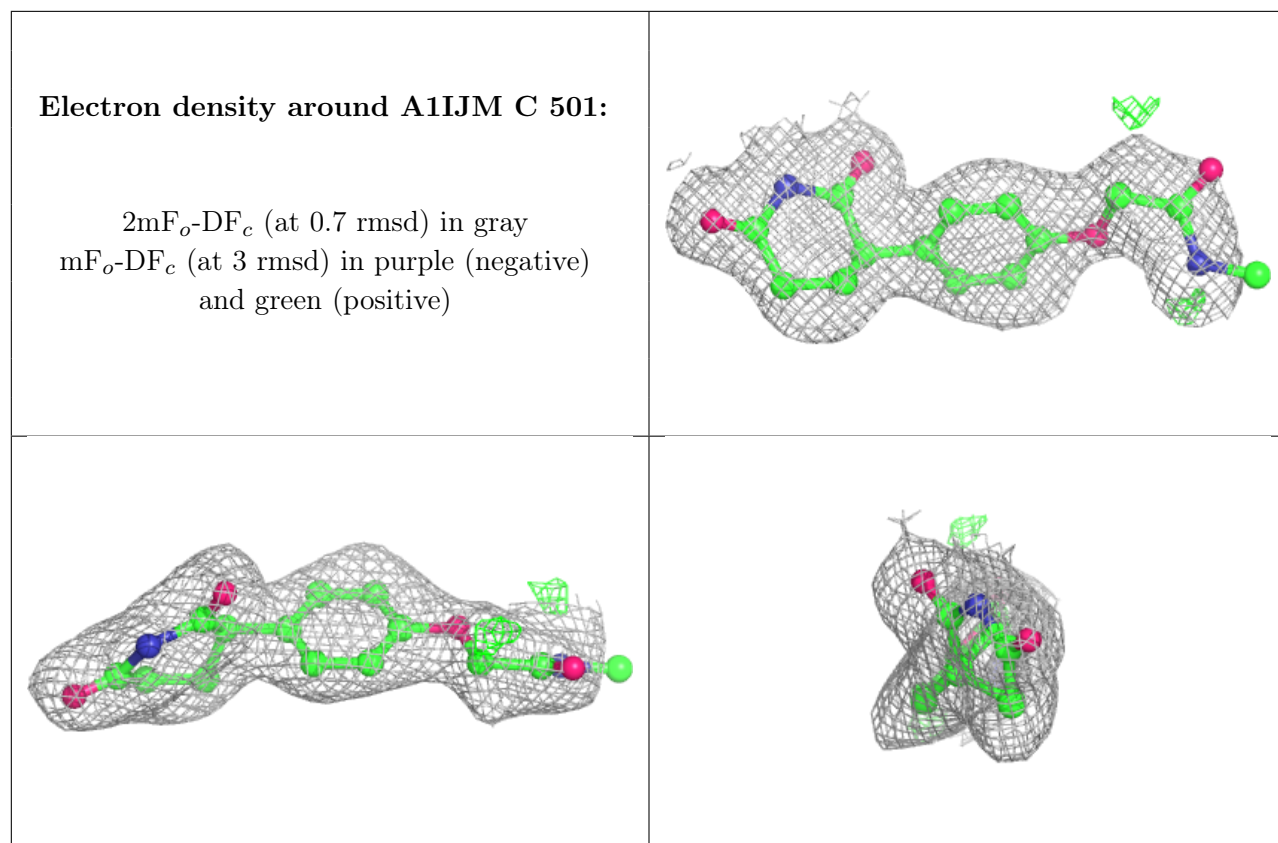
In the following table, the Atoms column lists the number of modelled atoms in the group and the number defined in the chemical component dictionary. The B-factors column lists the minimum,

median, 95th percentile and maximum values of B factors of atoms in the group. The column labelled 'Q < 0.9' lists the number of atoms with occupancy less than 0.9.

Mol	Type	Chain	Res	Atoms	RSCC	RSR	B-factors(Å ²)	Q<0.9
2	A1IJM	A	501	20/20	0.88	0.12	32,48,69,77	0
2	A1IJM	C	501	20/20	0.91	0.11	27,40,72,74	0
3	ZN	A	502	1/1	0.95	0.06	60,60,60,60	0
3	ZN	C	502	1/1	0.98	0.05	52,52,52,52	0

The following is a graphical depiction of the model fit to experimental electron density of all instances of the Ligand of Interest. In addition, ligands with molecular weight > 250 and outliers as shown on the geometry validation Tables will also be included. Each fit is shown from different orientation to approximate a three-dimensional view.





6.5 Other polymers [i](#)

There are no such residues in this entry.