



Full wwPDB X-ray Structure Validation Report ⓘ

Oct 3, 2018 – 06:57 AM EDT

PDB ID : 6GCO
Title : Truncated FtsH from *A. aeolicus* in P312
Authors : Uthoff, M.; Baumann, U.
Deposited on : 2018-04-18
Resolution : 3.32 Å (reported)

This is a Full wwPDB X-ray Structure Validation Report for a publicly released PDB entry.

We welcome your comments at validation@mail.wwpdb.org

A user guide is available at

<https://www.wwpdb.org/validation/2017/XrayValidationReportHelp>

with specific help available everywhere you see the ⓘ symbol.

The following versions of software and data (see [references ⓘ](#)) were used in the production of this report:

MolProbity : 4.02b-467
Mogul : 1.7.3 (157068), CSD as539be (2018)
Xtriage (Phenix) : 1.13
EDS : rb-20031633
Percentile statistics : 20171227.v01 (using entries in the PDB archive December 27th 2017)
Refmac : 5.8.0158
CCP4 : 7.0 (Gargrove)
Ideal geometry (proteins) : Engh & Huber (2001)
Ideal geometry (DNA, RNA) : Parkinson et al. (1996)
Validation Pipeline (wwPDB-VP) : rb-20031633

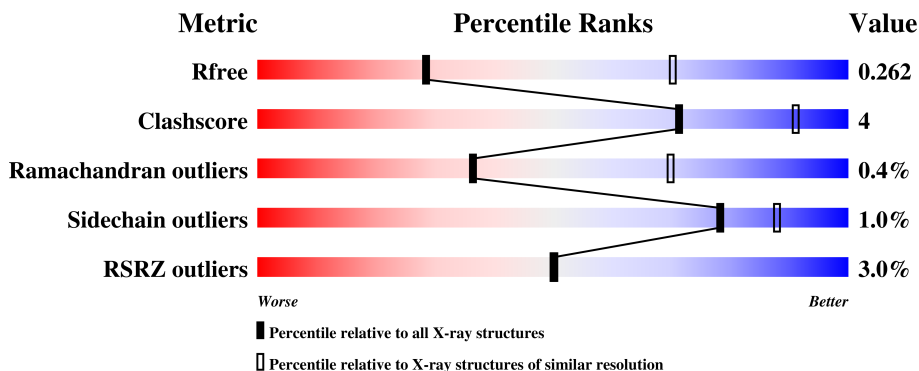
1 Overall quality at a glance

The following experimental techniques were used to determine the structure:

X-RAY DIFFRACTION

The reported resolution of this entry is 3.32 Å.

Percentile scores (ranging between 0-100) for global validation metrics of the entry are shown in the following graphic. The table shows the number of entries on which the scores are based.



Metric	Whole archive (#Entries)	Similar resolution (#Entries, resolution range(Å))
R_{free}	111664	1128 (3.38-3.26)
Clashscore	122126	1187 (3.38-3.26)
Ramachandran outliers	120053	1167 (3.38-3.26)
Sidechain outliers	120020	1166 (3.38-3.26)
RSRZ outliers	108989	1094 (3.38-3.26)

The table below summarises the geometric issues observed across the polymeric chains and their fit to the electron density. The red, orange, yellow and green segments on the lower bar indicate the fraction of residues that contain outliers for ≥ 3 , 2, 1 and 0 types of geometric quality criteria. A grey segment represents the fraction of residues that are not modelled. The numeric value for each fraction is indicated below the corresponding segment, with a dot representing fractions $\leq 5\%$. The upper red bar (where present) indicates the fraction of residues that have poor fit to the electron density. The numeric value is given above the bar.

Mol	Chain	Length	Quality of chain
1	A	479	 3% 79% 6% 15%
1	B	479	 2% 76% 6% 18%

2 Entry composition [i](#)

There are 3 unique types of molecules in this entry. The entry contains 9672 atoms, of which 4318 are hydrogens and 0 are deuteriums.

In the tables below, the ZeroOcc column contains the number of atoms modelled with zero occupancy, the AltConf column contains the number of residues with at least one atom in alternate conformation and the Trace column contains the number of residues modelled with at most 2 atoms.

- Molecule 1 is a protein called ATP-dependent zinc metalloprotease FtsH.

Mol	Chain	Residues	Atoms						ZeroOcc	AltConf	Trace
			Total	C	H	N	O	S			
1	A	409	Total	C	H	N	O	S	0	0	0
			4842	1693	2166	452	522	9			
1	B	395	Total	C	H	N	O	S	0	0	0
			4750	1652	2128	436	525	9			

There are 42 discrepancies between the modelled and reference sequences:

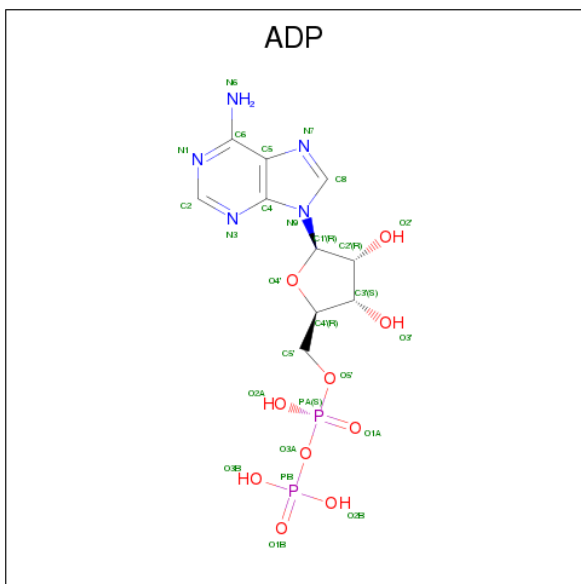
Chain	Residue	Modelled	Actual	Comment	Reference
A	130	MET	-	initiating methionine	UNP O67077
A	131	GLY	-	expression tag	UNP O67077
A	132	SER	-	expression tag	UNP O67077
A	133	SER	-	expression tag	UNP O67077
A	134	HIS	-	expression tag	UNP O67077
A	135	HIS	-	expression tag	UNP O67077
A	136	HIS	-	expression tag	UNP O67077
A	137	HIS	-	expression tag	UNP O67077
A	138	HIS	-	expression tag	UNP O67077
A	139	HIS	-	expression tag	UNP O67077
A	140	SER	-	expression tag	UNP O67077
A	141	SER	-	expression tag	UNP O67077
A	142	GLY	-	expression tag	UNP O67077
A	143	LEU	-	expression tag	UNP O67077
A	144	VAL	-	expression tag	UNP O67077
A	145	PRO	-	expression tag	UNP O67077
A	146	ARG	-	expression tag	UNP O67077
A	147	GLY	-	expression tag	UNP O67077
A	148	SER	-	expression tag	UNP O67077
A	149	HIS	-	expression tag	UNP O67077
A	150	MET	-	expression tag	UNP O67077
B	130	MET	-	initiating methionine	UNP O67077
B	131	GLY	-	expression tag	UNP O67077
B	132	SER	-	expression tag	UNP O67077
B	133	SER	-	expression tag	UNP O67077

Continued on next page...

Continued from previous page...

Chain	Residue	Modelled	Actual	Comment	Reference
B	134	HIS	-	expression tag	UNP O67077
B	135	HIS	-	expression tag	UNP O67077
B	136	HIS	-	expression tag	UNP O67077
B	137	HIS	-	expression tag	UNP O67077
B	138	HIS	-	expression tag	UNP O67077
B	139	HIS	-	expression tag	UNP O67077
B	140	SER	-	expression tag	UNP O67077
B	141	SER	-	expression tag	UNP O67077
B	142	GLY	-	expression tag	UNP O67077
B	143	LEU	-	expression tag	UNP O67077
B	144	VAL	-	expression tag	UNP O67077
B	145	PRO	-	expression tag	UNP O67077
B	146	ARG	-	expression tag	UNP O67077
B	147	GLY	-	expression tag	UNP O67077
B	148	SER	-	expression tag	UNP O67077
B	149	HIS	-	expression tag	UNP O67077
B	150	MET	-	expression tag	UNP O67077

- Molecule 2 is ADENOSINE-5'-DIPHOSPHATE (three-letter code: ADP) (formula: $C_{10}H_{15}N_5O_{10}P_2$).



Mol	Chain	Residues	Atoms					ZeroOcc	AltConf	
			Total	C	H	N	O			P
2	A	1	Total	C	H	N	O	P	0	0
			39	10	12	5	10	2		
2	B	1	Total	C	H	N	O	P	0	0
			39	10	12	5	10	2		

- Molecule 3 is ZINC ION (three-letter code: ZN) (formula: Zn).

Mol	Chain	Residues	Atoms		ZeroOcc	AltConf
3	B	1	Total 1	Zn 1	0	0
3	A	1	Total 1	Zn 1	0	0

4 Data and refinement statistics i

Property	Value	Source
Space group	P 3 1 2	Depositor
Cell constants a, b, c, α , β , γ	117.30Å 117.30Å 137.05Å 90.00° 90.00° 120.00°	Depositor
Resolution (Å)	81.61 – 3.32 81.61 – 3.32	Depositor EDS
% Data completeness (in resolution range)	98.8 (81.61-3.32) 94.6 (81.61-3.32)	Depositor EDS
R_{merge}	0.10	Depositor
R_{sym}	(Not available)	Depositor
$\langle I/\sigma(I) \rangle$ ¹	1.13 (at 3.33Å)	Xtriage
Refinement program	PHENIX 1.13-2998	Depositor
R, R_{free}	0.240 , 0.265 0.240 , 0.262	Depositor DCC
R_{free} test set	1118 reflections (7.01%)	wwPDB-VP
Wilson B-factor (Å ²)	106.0	Xtriage
Anisotropy	0.374	Xtriage
Bulk solvent k_{sol} (e/Å ³), B_{sol} (Å ²)	0.32 , 134.5	EDS
L-test for twinning ²	$\langle L \rangle = 0.40$, $\langle L^2 \rangle = 0.23$	Xtriage
Estimated twinning fraction	0.399 for -h,-k,l	Xtriage
Reported twinning fraction	0.440 for -h,-k,l	Depositor
Outliers	0 of 15949 reflections	Xtriage
F_o, F_c correlation	0.94	EDS
Total number of atoms	9672	wwPDB-VP
Average B, all atoms (Å ²)	158.0	wwPDB-VP

Xtriage's analysis on translational NCS is as follows: *The largest off-origin peak in the Patterson function is 4.15% of the height of the origin peak. No significant pseudotranslation is detected.*

¹Intensities estimated from amplitudes.

²Theoretical values of $\langle |L| \rangle$, $\langle L^2 \rangle$ for acentric reflections are 0.5, 0.333 respectively for untwinned datasets, and 0.375, 0.2 for perfectly twinned datasets.

5 Model quality [i](#)

5.1 Standard geometry [i](#)

Bond lengths and bond angles in the following residue types are not validated in this section: ZN, ADP

The Z score for a bond length (or angle) is the number of standard deviations the observed value is removed from the expected value. A bond length (or angle) with $|Z| > 5$ is considered an outlier worth inspection. RMSZ is the root-mean-square of all Z scores of the bond lengths (or angles).

Mol	Chain	Bond lengths		Bond angles	
		RMSZ	# Z >5	RMSZ	# Z >5
1	A	0.27	0/2718	0.43	0/3723
1	B	0.26	0/2660	0.43	0/3638
All	All	0.26	0/5378	0.43	0/7361

There are no bond length outliers.

There are no bond angle outliers.

There are no chirality outliers.

There are no planarity outliers.

5.2 Too-close contacts [i](#)

In the following table, the Non-H and H(model) columns list the number of non-hydrogen atoms and hydrogen atoms in the chain respectively. The H(added) column lists the number of hydrogen atoms added and optimized by MolProbity. The Clashes column lists the number of clashes within the asymmetric unit, whereas Symm-Clashes lists symmetry related clashes.

Mol	Chain	Non-H	H(model)	H(added)	Clashes	Symm-Clashes
1	A	2676	2166	2166	21	1
1	B	2622	2128	2128	16	1
2	A	27	12	12	2	0
2	B	27	12	12	2	0
3	A	1	0	0	0	0
3	B	1	0	0	0	0
All	All	5354	4318	4318	37	1

The all-atom clashscore is defined as the number of clashes found per 1000 atoms (including hydrogen atoms). The all-atom clashscore for this structure is 4.

All (37) close contacts within the same asymmetric unit are listed below, sorted by their clash

magnitude.

Atom-1	Atom-2	Interatomic distance (Å)	Clash overlap (Å)
1:B:458:LYS:NZ	1:B:465:ASP:OD2	2.28	0.65
1:B:345:ALA:N	1:B:384:ILE:O	2.30	0.64
1:B:202:THR:OG1	2:B:701:ADP:O2A	2.15	0.62
1:B:430:ASP:OD1	1:B:431:ASP:N	2.34	0.61
1:B:198:GLY:N	2:B:701:ADP:O1B	2.34	0.60
1:A:173:TYR:HA	1:A:180:PHE:CE2	2.41	0.56
1:B:580:LEU:O	1:B:584:GLU:N	2.39	0.55
1:A:190:GLY:HA3	1:A:317:PHE:HA	1.89	0.54
1:B:226:GLU:OE1	1:B:226:GLU:N	2.39	0.54
1:A:198:GLY:N	2:A:701:ADP:O1B	2.40	0.53
1:A:233:ALA:N	1:A:278:THR:HG22	2.24	0.53
1:A:516:LYS:NZ	1:A:549:GLU:OE1	2.41	0.53
1:A:580:LEU:O	1:A:584:GLU:N	2.35	0.53
1:B:348:VAL:HG12	1:B:386:MET:HG2	1.92	0.51
1:B:430:ASP:C	1:B:430:ASP:OD1	2.48	0.51
1:A:331:ARG:NH2	1:A:354:ALA:O	2.40	0.50
1:A:375:LEU:CB	1:A:388:GLU:CB	2.90	0.50
1:B:347:ASP:N	1:B:347:ASP:OD1	2.46	0.48
1:A:225:VAL:O	1:A:227:MET:N	2.48	0.47
1:A:225:VAL:HG23	1:A:226:GLU:H	1.81	0.46
1:A:254:ASP:OD1	1:A:255:GLU:N	2.49	0.46
1:A:201:LYS:N	2:A:701:ADP:O3B	2.49	0.46
1:A:190:GLY:CA	1:A:317:PHE:HA	2.46	0.45
1:A:236:VAL:O	1:A:240:PHE:HD1	2.00	0.45
1:A:190:GLY:C	1:A:317:PHE:HA	2.37	0.45
1:A:173:TYR:HA	1:A:180:PHE:CZ	2.53	0.44
1:A:311:LEU:O	1:A:316:ARG:O	2.36	0.44
1:B:299:ALA:CB	1:B:317:PHE:HE1	2.31	0.43
1:B:348:VAL:HA	1:B:386:MET:HG2	1.99	0.43
1:A:238:ASP:O	1:A:242:THR:HG23	2.17	0.43
1:B:290:ASP:O	1:B:292:SER:N	2.42	0.43
1:A:428:VAL:O	1:A:428:VAL:HG12	2.19	0.42
1:B:225:VAL:O	1:B:229:VAL:N	2.52	0.42
1:B:154:PHE:CZ	1:B:171:ILE:HD11	2.55	0.41
1:B:254:ASP:OD1	1:B:255:GLU:N	2.53	0.41
1:A:173:TYR:CA	1:A:180:PHE:CZ	3.03	0.40
1:A:371:GLU:CB	1:A:392:ALA:HB1	2.51	0.40

All (1) symmetry-related close contacts are listed below. The label for Atom-2 includes the symmetry operator and encoded unit-cell translations to be applied.

Atom-1	Atom-2	Interatomic distance (Å)	Clash overlap (Å)
1:A:405:MET:O	1:B:459:HIS:HE2[3_895]	1.54	0.06

5.3 Torsion angles [i](#)

5.3.1 Protein backbone [i](#)

In the following table, the Percentiles column shows the percent Ramachandran outliers of the chain as a percentile score with respect to all X-ray entries followed by that with respect to entries of similar resolution.

The Analysed column shows the number of residues for which the backbone conformation was analysed, and the total number of residues.

Mol	Chain	Analysed	Favoured	Allowed	Outliers	Percentiles	
1	A	395/479 (82%)	378 (96%)	15 (4%)	2 (0%)	31	65
1	B	379/479 (79%)	363 (96%)	15 (4%)	1 (0%)	43	75
All	All	774/958 (81%)	741 (96%)	30 (4%)	3 (0%)	36	70

All (3) Ramachandran outliers are listed below:

Mol	Chain	Res	Type
1	A	226	GLU
1	A	455	ILE
1	B	343	LYS

5.3.2 Protein sidechains [i](#)

In the following table, the Percentiles column shows the percent sidechain outliers of the chain as a percentile score with respect to all X-ray entries followed by that with respect to entries of similar resolution.

The Analysed column shows the number of residues for which the sidechain conformation was analysed, and the total number of residues.

Mol	Chain	Analysed	Rotameric	Outliers	Percentiles	
1	A	195/397 (49%)	195 (100%)	0	100	100
1	B	201/397 (51%)	197 (98%)	4 (2%)	58	80
All	All	396/794 (50%)	392 (99%)	4 (1%)	78	88

All (4) residues with a non-rotameric sidechain are listed below:

Mol	Chain	Res	Type
1	B	318	ASP
1	B	349	ASP
1	B	383	GLU
1	B	430	ASP

Some sidechains can be flipped to improve hydrogen bonding and reduce clashes. All (1) such sidechains are listed below:

Mol	Chain	Res	Type
1	B	338	HIS

5.3.3 RNA [i](#)

There are no RNA molecules in this entry.

5.4 Non-standard residues in protein, DNA, RNA chains [i](#)

There are no non-standard protein/DNA/RNA residues in this entry.

5.5 Carbohydrates [i](#)

There are no carbohydrates in this entry.

5.6 Ligand geometry [i](#)

Of 4 ligands modelled in this entry, 2 are monoatomic - leaving 2 for Mogul analysis.

In the following table, the Counts columns list the number of bonds (or angles) for which Mogul statistics could be retrieved, the number of bonds (or angles) that are observed in the model and the number of bonds (or angles) that are defined in the Chemical Component Dictionary. The Link column lists molecule types, if any, to which the group is linked. The Z score for a bond length (or angle) is the number of standard deviations the observed value is removed from the expected value. A bond length (or angle) with $|Z| > 2$ is considered an outlier worth inspection. RMSZ is the root-mean-square of all Z scores of the bond lengths (or angles).

Mol	Type	Chain	Res	Link	Bond lengths			Bond angles		
					Counts	RMSZ	$\# Z > 2$	Counts	RMSZ	$\# Z > 2$
2	ADP	A	701	-	25,29,29	1.04	1 (4%)	25,45,45	1.87	3 (12%)
2	ADP	B	701	-	25,29,29	1.03	1 (4%)	25,45,45	1.89	3 (12%)

In the following table, the Chirals column lists the number of chiral outliers, the number of chiral

centers analysed, the number of these observed in the model and the number defined in the Chemical Component Dictionary. Similar counts are reported in the Torsion and Rings columns. '-' means no outliers of that kind were identified.

Mol	Type	Chain	Res	Link	Chirals	Torsions	Rings
2	ADP	A	701	-	-	0/12/32/32	0/3/3/3
2	ADP	B	701	-	-	0/12/32/32	0/3/3/3

All (2) bond length outliers are listed below:

Mol	Chain	Res	Type	Atoms	Z	Observed(Å)	Ideal(Å)
2	A	701	ADP	C5-C4	3.07	1.47	1.40
2	B	701	ADP	C5-C4	3.11	1.47	1.40

All (6) bond angle outliers are listed below:

Mol	Chain	Res	Type	Atoms	Z	Observed(°)	Ideal(°)
2	A	701	ADP	N3-C2-N1	-6.88	122.97	128.86
2	B	701	ADP	N3-C2-N1	-6.83	123.02	128.86
2	B	701	ADP	PA-O3A-PB	-3.43	121.12	132.63
2	A	701	ADP	PA-O3A-PB	-3.28	121.59	132.63
2	B	701	ADP	C4-C5-N7	-2.88	106.63	109.41
2	A	701	ADP	C4-C5-N7	-2.75	106.75	109.41

There are no chirality outliers.

There are no torsion outliers.

There are no ring outliers.

2 monomers are involved in 4 short contacts:

Mol	Chain	Res	Type	Clashes	Symm-Clashes
2	A	701	ADP	2	0
2	B	701	ADP	2	0

5.7 Other polymers [i](#)

There are no such residues in this entry.

5.8 Polymer linkage issues [i](#)

There are no chain breaks in this entry.

6 Fit of model and data

6.1 Protein, DNA and RNA chains

In the following table, the column labelled ‘#RSRZ > 2’ contains the number (and percentage) of RSRZ outliers, followed by percent RSRZ outliers for the chain as percentile scores relative to all X-ray entries and entries of similar resolution. The OWAB column contains the minimum, median, 95th percentile and maximum values of the occupancy-weighted average B-factor per residue. The column labelled ‘Q < 0.9’ lists the number of (and percentage) of residues with an average occupancy less than 0.9.

Mol	Chain	Analysed	<RSRZ>	#RSRZ>2	OWAB(Å ²)	Q<0.9
1	A	409/479 (85%)	-0.02	15 (3%) 41 39	66, 160, 217, 275	0
1	B	395/479 (82%)	-0.08	9 (2%) 60 60	27, 145, 200, 327	0
All	All	804/958 (83%)	-0.05	24 (2%) 50 50	27, 148, 211, 327	0

All (24) RSRZ outliers are listed below:

Mol	Chain	Res	Type	RSRZ
1	A	257	ASP	5.5
1	A	159	GLY	5.5
1	B	320	GLN	5.4
1	B	431	ASP	4.4
1	A	175	LYS	4.1
1	A	157	VAL	4.1
1	B	194	TYR	3.6
1	A	158	ALA	3.5
1	A	225	VAL	3.1
1	A	246	HIS	3.0
1	B	430	ASP	2.8
1	A	247	ALA	2.6
1	A	202	THR	2.5
1	B	159	GLY	2.5
1	A	250	ILE	2.4
1	B	360	PHE	2.3
1	B	158	ALA	2.2
1	A	297	VAL	2.2
1	A	200	GLY	2.2
1	A	377	ALA	2.1
1	A	365	LEU	2.1
1	B	240	PHE	2.1
1	B	356	ALA	2.0
1	A	294	GLY	2.0

6.2 Non-standard residues in protein, DNA, RNA chains [i](#)

There are no non-standard protein/DNA/RNA residues in this entry.

6.3 Carbohydrates [i](#)

There are no carbohydrates in this entry.

6.4 Ligands [i](#)

In the following table, the Atoms column lists the number of modelled atoms in the group and the number defined in the chemical component dictionary. The B-factors column lists the minimum, median, 95th percentile and maximum values of B factors of atoms in the group. The column labelled 'Q<0.9' lists the number of atoms with occupancy less than 0.9.

Mol	Type	Chain	Res	Atoms	RSCC	RSR	B-factors(Å ²)	Q<0.9
2	ADP	B	701	27/27	0.81	0.26	163,182,229,232	0
3	ZN	B	702	1/1	0.85	0.20	264,264,264,264	0
2	ADP	A	701	27/27	0.87	0.22	188,226,281,292	0
3	ZN	A	702	1/1	0.92	0.09	180,180,180,180	0

6.5 Other polymers [i](#)

There are no such residues in this entry.