



# Full wwPDB X-ray Structure Validation Report ⓘ

Oct 7, 2024 – 08:51 pm BST

PDB ID : 9GCI  
Title : The crystal structure of beta-glucosidase from the thermophilic bacterium Caldicellulosiruptor saccharolyticus determined at 1.47 Å resolution  
Authors : Chrysina, E.D.; Sotiropoulou, A.I.  
Deposited on : 2024-08-01  
Resolution : 1.47 Å (reported)

This is a Full wwPDB X-ray Structure Validation Report for a publicly released PDB entry.

We welcome your comments at [validation@mail.wwpdb.org](mailto:validation@mail.wwpdb.org)

A user guide is available at

<https://www.wwpdb.org/validation/2017/XrayValidationReportHelp>

with specific help available everywhere you see the ⓘ symbol.

The types of validation reports are described at

<http://www.wwpdb.org/validation/2017/FAQs#types>.

---

The following versions of software and data (see [references ⓘ](#)) were used in the production of this report:

MolProbity : 4.02b-467  
Mogul : 1.8.4, CSD as541be (2020)  
Xtriage (Phenix) : 1.13  
EDS : 3.0  
Percentile statistics : 20231227.v01 (using entries in the PDB archive December 27th 2023)  
CCP4 : 9.0.003 (Gargrove)  
Density-Fitness : 1.0.11  
Ideal geometry (proteins) : Engh & Huber (2001)  
Ideal geometry (DNA, RNA) : Parkinson et al. (1996)  
Validation Pipeline (wwPDB-VP) : 2.39

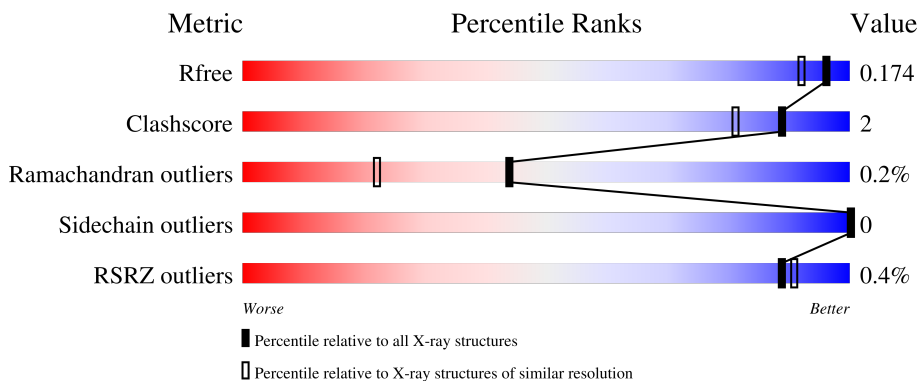
# 1 Overall quality at a glance

The following experimental techniques were used to determine the structure:

*X-RAY DIFFRACTION*

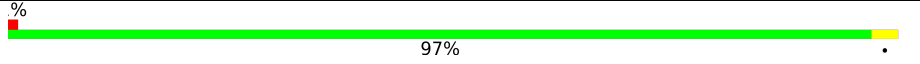
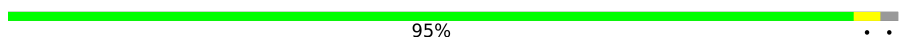
The reported resolution of this entry is 1.47 Å.

Percentile scores (ranging between 0-100) for global validation metrics of the entry are shown in the following graphic. The table shows the number of entries on which the scores are based.



Metric	Whole archive (#Entries)	Similar resolution (#Entries, resolution range(Å))
$R_{free}$	164625	6131 (1.50-1.46)
Clashscore	180529	6623 (1.50-1.46)
Ramachandran outliers	177936	6521 (1.50-1.46)
Sidechain outliers	177891	6518 (1.50-1.46)
RSRZ outliers	164620	6132 (1.50-1.46)

The table below summarises the geometric issues observed across the polymeric chains and their fit to the electron density. The red, orange, yellow and green segments of the lower bar indicate the fraction of residues that contain outliers for  $\geq 3$ , 2, 1 and 0 types of geometric quality criteria respectively. A grey segment represents the fraction of residues that are not modelled. The numeric value for each fraction is indicated below the corresponding segment, with a dot representing fractions  $\leq 5\%$ . The upper red bar (where present) indicates the fraction of residues that have poor fit to the electron density. The numeric value is given above the bar.

Mol	Chain	Length	Quality of chain
1	A	460	 97%
1	B	460	 95%

The following table lists non-polymeric compounds, carbohydrate monomers and non-standard residues in protein, DNA, RNA chains that are outliers for geometric or electron-density-fit criteria:

Mol	Type	Chain	Res	Chirality	Geometry	Clashes	Electron density
6	PEG	A	511	-	-	X	-

## 2 Entry composition

There are 8 unique types of molecules in this entry. The entry contains 16090 atoms, of which 7545 are hydrogens and 0 are deuteriums.

In the tables below, the ZeroOcc column contains the number of atoms modelled with zero occupancy, the AltConf column contains the number of residues with at least one atom in alternate conformation and the Trace column contains the number of residues modelled with at most 2 atoms.

- Molecule 1 is a protein called beta-glucosidase.

Mol	Chain	Residues	Atoms					ZeroOcc	AltConf	Trace	
			Total	C	H	N	O				S
1	A	460	7560	2499	3725	625	698	13	96	1	0
1	B	452	7437	2461	3667	614	684	11	93	1	0

There are 14 discrepancies between the modelled and reference sequences:

Chain	Residue	Modelled	Actual	Comment	Reference
A	-6	SER	-	expression tag	UNP A4XIG7
A	-5	HIS	-	expression tag	UNP A4XIG7
A	-4	MET	-	expression tag	UNP A4XIG7
A	-3	LEU	-	expression tag	UNP A4XIG7
A	-2	GLU	-	expression tag	UNP A4XIG7
A	-1	ASP	-	expression tag	UNP A4XIG7
A	0	PRO	-	expression tag	UNP A4XIG7
B	-6	SER	-	expression tag	UNP A4XIG7
B	-5	HIS	-	expression tag	UNP A4XIG7
B	-4	MET	-	expression tag	UNP A4XIG7
B	-3	LEU	-	expression tag	UNP A4XIG7
B	-2	GLU	-	expression tag	UNP A4XIG7
B	-1	ASP	-	expression tag	UNP A4XIG7
B	0	PRO	-	expression tag	UNP A4XIG7

- Molecule 2 is GLYCEROL (three-letter code: GOL) (formula: C<sub>3</sub>H<sub>8</sub>O<sub>3</sub>).



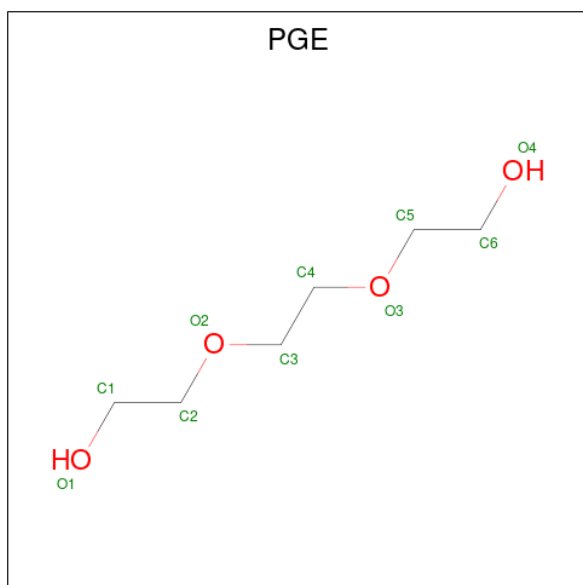
Mol	Chain	Residues	Atoms				ZeroOcc	AltConf
2	A	1	Total	C	H	O	2	0
			14	3	8	3		
2	A	1	Total	C	H	O	2	0
			14	3	8	3		
2	A	1	Total	C	H	O	2	0
			14	3	8	3		
2	B	1	Total	C	H	O	2	0
			14	3	8	3		
2	B	1	Total	C	H	O	2	0
			14	3	8	3		
2	B	1	Total	C	H	O	2	0
			14	3	8	3		

- Molecule 3 is 1,2-ETHANEDIOL (three-letter code: EDO) (formula: C<sub>2</sub>H<sub>6</sub>O<sub>2</sub>).



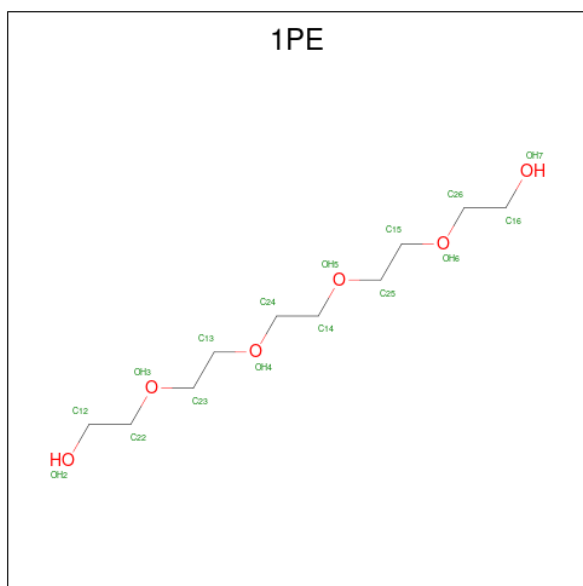
Mol	Chain	Residues	Atoms				ZeroOcc	AltConf
			Total	C	H	O		
3	A	1	10	2	6	2	1	0
3	A	1	10	2	6	2	1	0
3	B	1	10	2	6	2	1	0
3	B	1	10	2	6	2	1	0

- Molecule 4 is TRIETHYLENE GLYCOL (three-letter code: PGE) (formula:  $C_6H_{14}O_4$ ).



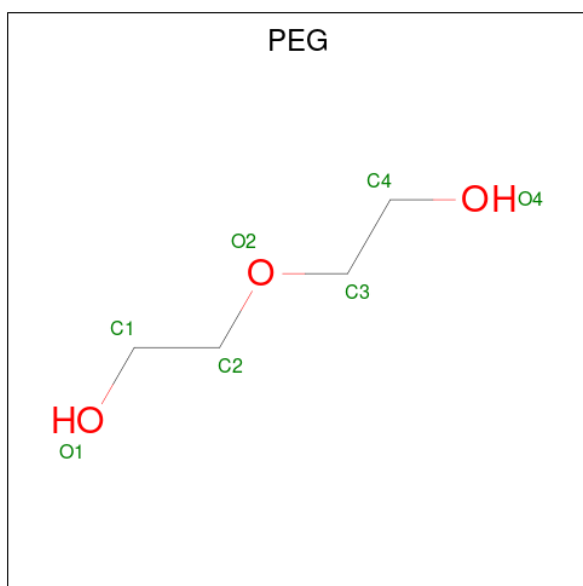
Mol	Chain	Residues	Atoms				ZeroOcc	AltConf
			Total	C	H	O		
4	A	1	24	6	14	4	1	0

- Molecule 5 is PENTAETHYLENE GLYCOL (three-letter code: 1PE) (formula:  $C_{10}H_{22}O_6$ ).



Mol	Chain	Residues	Atoms				ZeroOcc	AltConf
			Total	C	H	O		
5	A	1	30	8	17	5	1	0

- Molecule 6 is DI(HYDROXYETHYL)ETHER (three-letter code: PEG) (formula:  $C_4H_{10}O_3$ ).



Mol	Chain	Residues	Atoms	ZeroOcc	AltConf
6	A	1	Total C H O 17 4 10 3	1	0
6	A	1	Total C H O 17 4 10 3	1	0
6	A	1	Total C H O 17 4 10 3	1	0
6	A	1	Total C H O 17 4 10 3	1	0
6	B	1	Total C H O 17 4 10 3	1	0

- Molecule 7 is CHLORIDE ION (three-letter code: CL) (formula: Cl).

Mol	Chain	Residues	Atoms	ZeroOcc	AltConf
7	A	1	Total Cl 1 1	0	0

- Molecule 8 is water.

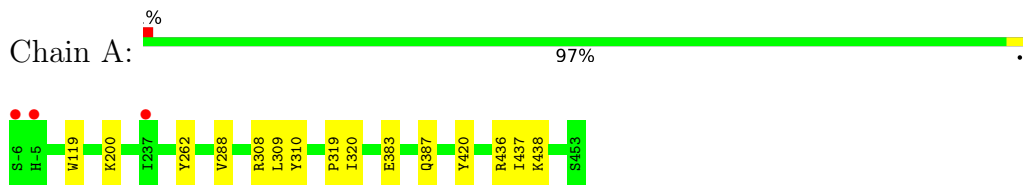
Mol	Chain	Residues	Atoms	ZeroOcc	AltConf
8	A	416	Total O 416 416	0	0
8	B	413	Total O 413 413	0	0



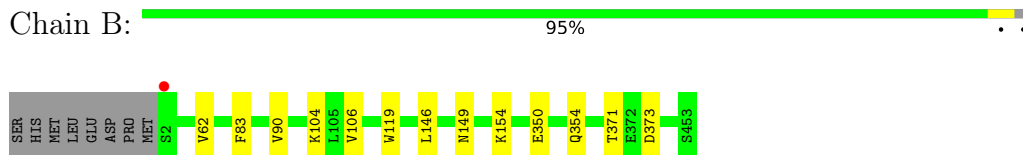
### 3 Residue-property plots [i](#)

These plots are drawn for all protein, RNA, DNA and oligosaccharide chains in the entry. The first graphic for a chain summarises the proportions of the various outlier classes displayed in the second graphic. The second graphic shows the sequence view annotated by issues in geometry and electron density. Residues are color-coded according to the number of geometric quality criteria for which they contain at least one outlier: green = 0, yellow = 1, orange = 2 and red = 3 or more. A red dot above a residue indicates a poor fit to the electron density ( $RSRZ > 2$ ). Stretches of 2 or more consecutive residues without any outlier are shown as a green connector. Residues present in the sample, but not in the model, are shown in grey.

- Molecule 1: beta-glucosidase



- Molecule 1: beta-glucosidase



## 4 Data and refinement statistics

Property	Value	Source
Space group	P 1 21 1	Depositor
Cell constants a, b, c, $\alpha$ , $\beta$ , $\gamma$	68.44Å 98.72Å 80.49Å 90.00° 97.49° 90.00°	Depositor
Resolution (Å)	55.44 – 1.47 55.44 – 1.47	Depositor EDS
% Data completeness (in resolution range)	96.4 (55.44-1.47) 96.4 (55.44-1.47)	Depositor EDS
$R_{merge}$	(Not available)	Depositor
$R_{sym}$	(Not available)	Depositor
$\langle I/\sigma(I) \rangle$ <sup>1</sup>	1.96 (at 1.47Å)	Xtrriage
Refinement program	REFMAC 5.8.0419	Depositor
R, $R_{free}$	0.153 , 0.173 0.154 , 0.174	Depositor DCC
$R_{free}$ test set	9073 reflections (5.06%)	wwPDB-VP
Wilson B-factor (Å <sup>2</sup> )	13.2	Xtrriage
Anisotropy	0.009	Xtrriage
Bulk solvent $k_{sol}$ (e/Å <sup>3</sup> ), $B_{sol}$ (Å <sup>2</sup> )	0.43 , 36.5	EDS
L-test for twinning <sup>2</sup>	$\langle  L  \rangle = 0.50$ , $\langle L^2 \rangle = 0.33$	Xtrriage
Estimated twinning fraction	No twinning to report.	Xtrriage
$F_o, F_c$ correlation	0.97	EDS
Total number of atoms	16090	wwPDB-VP
Average B, all atoms (Å <sup>2</sup> )	15.0	wwPDB-VP

Xtrriage's analysis on translational NCS is as follows: *The largest off-origin peak in the Patterson function is 4.90% of the height of the origin peak. No significant pseudotranslation is detected.*

<sup>1</sup>Intensities estimated from amplitudes.

<sup>2</sup>Theoretical values of  $\langle |L| \rangle$ ,  $\langle L^2 \rangle$  for acentric reflections are 0.5, 0.333 respectively for untwinned datasets, and 0.375, 0.2 for perfectly twinned datasets.

## 5 Model quality [i](#)

### 5.1 Standard geometry [i](#)

Bond lengths and bond angles in the following residue types are not validated in this section: 1PE, CL, GOL, EDO, PEG, PGE

The Z score for a bond length (or angle) is the number of standard deviations the observed value is removed from the expected value. A bond length (or angle) with  $|Z| > 5$  is considered an outlier worth inspection. RMSZ is the root-mean-square of all Z scores of the bond lengths (or angles).

Mol	Chain	Bond lengths		Bond angles	
		RMSZ	# Z  >5	RMSZ	# Z  >5
1	A	0.33	0/3951	0.63	0/5353
1	B	0.33	0/3884	0.64	0/5263
All	All	0.33	0/7835	0.64	0/10616

There are no bond length outliers.

There are no bond angle outliers.

There are no chirality outliers.

There are no planarity outliers.

### 5.2 Too-close contacts [i](#)

In the following table, the Non-H and H(model) columns list the number of non-hydrogen atoms and hydrogen atoms in the chain respectively. The H(added) column lists the number of hydrogen atoms added and optimized by MolProbity. The Clashes column lists the number of clashes within the asymmetric unit, whereas Symm-Clashes lists symmetry-related clashes.

Mol	Chain	Non-H	H(model)	H(added)	Clashes	Symm-Clashes
1	A	3835	3725	3714	15	0
1	B	3770	3667	3656	8	0
2	A	18	24	24	0	0
2	B	18	24	24	0	0
3	A	8	12	12	0	0
3	B	8	12	12	1	0
4	A	10	14	14	1	0
5	A	13	17	17	2	0
6	A	28	40	40	10	0
6	B	7	10	10	2	0
7	A	1	0	0	0	0

*Continued on next page...*

Continued from previous page...

Mol	Chain	Non-H	H(model)	H(added)	Clashes	Symm-Clashes
8	A	416	0	0	4	0
8	B	413	0	0	4	0
All	All	8545	7545	7523	28	0

The all-atom clashscore is defined as the number of clashes found per 1000 atoms (including hydrogen atoms). The all-atom clashscore for this structure is 2.

All (28) close contacts within the same asymmetric unit are listed below, sorted by their clash magnitude.

Atom-1	Atom-2	Interatomic distance (Å)	Clash overlap (Å)
6:A:508:PEG:H11	8:A:603:HOH:O	1.75	0.86
1:A:438:LYS:HE3	6:A:511:PEG:H31	1.60	0.84
3:B:503:EDO:H11	8:B:835:HOH:O	1.88	0.72
1:A:438:LYS:CE	6:A:511:PEG:H31	2.20	0.72
1:A:437:ILE:HA	6:A:511:PEG:H42	1.73	0.68
1:A:438:LYS:HE3	6:A:511:PEG:C3	2.25	0.67
6:B:506:PEG:H21	8:B:961:HOH:O	1.95	0.66
1:B:371:THR:OG1	1:B:373:ASP:OD1	2.15	0.59
1:A:436:ARG:O	6:A:511:PEG:H42	2.02	0.59
1:B:149:ASN:HD21	6:B:506:PEG:H22	1.69	0.57
6:A:508:PEG:C1	8:A:603:HOH:O	2.39	0.57
1:A:420:TYR:O	6:A:510:PEG:H12	2.06	0.56
1:A:438:LYS:CE	6:A:511:PEG:C3	2.85	0.54
1:A:436:ARG:O	6:A:511:PEG:C4	2.56	0.53
1:A:319:PRO:HG3	4:A:506:PGE:H1	1.90	0.53
1:A:309:LEU:C	1:A:309:LEU:HD12	2.31	0.51
1:A:383:GLU:OE2	1:A:387:GLN:NE2	2.40	0.49
1:B:106:VAL:HG21	1:B:154:LYS:HD3	1.95	0.48
1:A:200:LYS:NZ	8:A:609:HOH:O	2.42	0.45
5:A:507:1PE:C12	8:A:628:HOH:O	2.63	0.45
1:B:354:GLN:HG2	8:B:982:HOH:O	2.17	0.45
1:B:350:GLU:HG2	8:B:993:HOH:O	2.18	0.44
1:B:62:VAL:HG11	1:B:104:LYS:HG2	1.99	0.44
1:B:83:PHE:CE1	1:B:90:VAL:HG22	2.52	0.44
1:A:308:ARG:HD3	1:A:320:ILE:HD13	2.00	0.42
1:B:146:LEU:C	1:B:146:LEU:HD23	2.40	0.42
1:A:262:TYR:CE2	1:A:288:VAL:HG21	2.55	0.42
1:A:310:TYR:O	5:A:507:1PE:H232	2.20	0.42

There are no symmetry-related clashes.

## 5.3 Torsion angles [i](#)

### 5.3.1 Protein backbone [i](#)

In the following table, the Percentiles column shows the percent Ramachandran outliers of the chain as a percentile score with respect to all X-ray entries followed by that with respect to entries of similar resolution.

The Analysed column shows the number of residues for which the backbone conformation was analysed, and the total number of residues.

Mol	Chain	Analysed	Favoured	Allowed	Outliers	Percentiles	
1	A	459/460 (100%)	449 (98%)	9 (2%)	1 (0%)	44	22
1	B	451/460 (98%)	444 (98%)	6 (1%)	1 (0%)	44	22
All	All	910/920 (99%)	893 (98%)	15 (2%)	2 (0%)	44	22

All (2) Ramachandran outliers are listed below:

Mol	Chain	Res	Type
1	A	119	TRP
1	B	119	TRP

### 5.3.2 Protein sidechains [i](#)

In the following table, the Percentiles column shows the percent sidechain outliers of the chain as a percentile score with respect to all X-ray entries followed by that with respect to entries of similar resolution.

The Analysed column shows the number of residues for which the sidechain conformation was analysed, and the total number of residues.

Mol	Chain	Analysed	Rotameric	Outliers	Percentiles	
1	A	409/408 (100%)	409 (100%)	0	100	100
1	B	401/408 (98%)	401 (100%)	0	100	100
All	All	810/816 (99%)	810 (100%)	0	100	100

There are no protein residues with a non-rotameric sidechain to report.

Sometimes sidechains can be flipped to improve hydrogen bonding and reduce clashes. There are no such sidechains identified.

### 5.3.3 RNA [i](#)

There are no RNA molecules in this entry.

## 5.4 Non-standard residues in protein, DNA, RNA chains [i](#)

There are no non-standard protein/DNA/RNA residues in this entry.

## 5.5 Carbohydrates [i](#)

There are no oligosaccharides in this entry.

## 5.6 Ligand geometry [i](#)

Of 18 ligands modelled in this entry, 1 is monoatomic - leaving 17 for Mogul analysis.

In the following table, the Counts columns list the number of bonds (or angles) for which Mogul statistics could be retrieved, the number of bonds (or angles) that are observed in the model and the number of bonds (or angles) that are defined in the Chemical Component Dictionary. The Link column lists molecule types, if any, to which the group is linked. The Z score for a bond length (or angle) is the number of standard deviations the observed value is removed from the expected value. A bond length (or angle) with  $|Z| > 2$  is considered an outlier worth inspection. RMSZ is the root-mean-square of all Z scores of the bond lengths (or angles).

Mol	Type	Chain	Res	Link	Bond lengths			Bond angles		
					Counts	RMSZ	$\# Z  > 2$	Counts	RMSZ	$\# Z  > 2$
6	PEG	B	506	-	6,6,6	0.27	0	5,5,5	0.18	0
6	PEG	A	509	-	6,6,6	0.21	0	5,5,5	0.22	0
2	GOL	A	502	-	5,5,5	0.08	0	5,5,5	0.13	0
2	GOL	B	504	-	5,5,5	0.11	0	5,5,5	0.47	0
2	GOL	A	501	-	5,5,5	0.08	0	5,5,5	0.23	0
3	EDO	B	503	-	3,3,3	0.15	0	2,2,2	0.64	0
4	PGE	A	506	-	9,9,9	0.22	0	8,8,8	0.18	0
6	PEG	A	510	-	6,6,6	0.26	0	5,5,5	0.22	0
6	PEG	A	511	-	6,6,6	0.11	0	5,5,5	0.18	0
5	1PE	A	507	-	12,12,15	0.17	0	11,11,14	0.23	0
2	GOL	B	502	-	5,5,5	0.10	0	5,5,5	0.31	0
3	EDO	A	505	-	3,3,3	0.20	0	2,2,2	0.38	0
3	EDO	B	505	-	3,3,3	0.27	0	2,2,2	0.13	0
2	GOL	B	501	-	5,5,5	0.03	0	5,5,5	0.15	0
6	PEG	A	508	-	6,6,6	0.17	0	5,5,5	0.18	0
2	GOL	A	503	-	5,5,5	0.12	0	5,5,5	0.24	0
3	EDO	A	504	-	3,3,3	0.07	0	2,2,2	0.21	0

In the following table, the Chirals column lists the number of chiral outliers, the number of chiral centers analysed, the number of these observed in the model and the number defined in the Chemical Component Dictionary. Similar counts are reported in the Torsion and Rings columns. '-' means no outliers of that kind were identified.

Mol	Type	Chain	Res	Link	Chirals	Torsions	Rings
6	PEG	B	506	-	-	1/4/4/4	-
6	PEG	A	509	-	-	2/4/4/4	-
2	GOL	A	502	-	-	2/4/4/4	-
2	GOL	B	504	-	-	2/4/4/4	-
2	GOL	A	501	-	-	0/4/4/4	-
3	EDO	B	503	-	-	1/1/1/1	-
4	PGE	A	506	-	-	2/7/7/7	-
6	PEG	A	510	-	-	2/4/4/4	-
6	PEG	A	511	-	-	3/4/4/4	-
5	1PE	A	507	-	-	6/10/10/13	-
2	GOL	B	502	-	-	0/4/4/4	-
3	EDO	A	505	-	-	0/1/1/1	-
3	EDO	B	505	-	-	0/1/1/1	-
2	GOL	B	501	-	-	0/4/4/4	-
6	PEG	A	508	-	-	2/4/4/4	-
2	GOL	A	503	-	-	1/4/4/4	-
3	EDO	A	504	-	-	0/1/1/1	-

There are no bond length outliers.

There are no bond angle outliers.

There are no chirality outliers.

All (24) torsion outliers are listed below:

Mol	Chain	Res	Type	Atoms
2	B	504	GOL	C1-C2-C3-O3
6	A	509	PEG	O2-C3-C4-O4
5	A	507	1PE	OH2-C12-C22-OH3
6	B	506	PEG	O2-C3-C4-O4
6	A	510	PEG	O2-C3-C4-O4
2	A	502	GOL	O1-C1-C2-C3
3	B	503	EDO	O1-C1-C2-O2
6	A	508	PEG	O1-C1-C2-O2
2	B	504	GOL	O2-C2-C3-O3
4	A	506	PGE	O2-C3-C4-O3
5	A	507	1PE	C13-C23-OH3-C22

*Continued on next page...*

*Continued from previous page...*

Mol	Chain	Res	Type	Atoms
6	A	511	PEG	O2-C3-C4-O4
6	A	511	PEG	O1-C1-C2-O2
6	A	511	PEG	C1-C2-O2-C3
4	A	506	PGE	C1-C2-O2-C3
6	A	508	PEG	O2-C3-C4-O4
6	A	509	PEG	O1-C1-C2-O2
5	A	507	1PE	OH5-C14-C24-OH4
6	A	510	PEG	C4-C3-O2-C2
2	A	502	GOL	O1-C1-C2-O2
5	A	507	1PE	C14-C24-OH4-C13
5	A	507	1PE	C12-C22-OH3-C23
2	A	503	GOL	O1-C1-C2-C3
5	A	507	1PE	C23-C13-OH4-C24

There are no ring outliers.

7 monomers are involved in 16 short contacts:

Mol	Chain	Res	Type	Clashes	Symm-Clashes
6	B	506	PEG	2	0
3	B	503	EDO	1	0
4	A	506	PGE	1	0
6	A	510	PEG	1	0
6	A	511	PEG	7	0
5	A	507	1PE	2	0
6	A	508	PEG	2	0

## 5.7 Other polymers [i](#)

There are no such residues in this entry.

## 5.8 Polymer linkage issues [i](#)

There are no chain breaks in this entry.



## 6 Fit of model and data [i](#)

### 6.1 Protein, DNA and RNA chains [i](#)

In the following table, the column labelled '#RSRZ > 2' contains the number (and percentage) of RSRZ outliers, followed by percent RSRZ outliers for the chain as percentile scores relative to all X-ray entries and entries of similar resolution. The OWAB column contains the minimum, median, 95<sup>th</sup> percentile and maximum values of the occupancy-weighted average B-factor per residue. The column labelled 'Q < 0.9' lists the number of (and percentage) of residues with an average occupancy less than 0.9.

Mol	Chain	Analysed	<RSRZ>	#RSRZ>2	OWAB(Å <sup>2</sup> )	Q<0.9
1	A	460/460 (100%)	-0.58	3 (0%) 84   87	7, 12, 25, 41	1 (0%)
1	B	452/460 (98%)	-0.62	1 (0%) 92   92	6, 12, 24, 36	1 (0%)
All	All	912/920 (99%)	-0.60	4 (0%) 89   91	6, 12, 24, 41	2 (0%)

All (4) RSRZ outliers are listed below:

Mol	Chain	Res	Type	RSRZ
1	A	-5	HIS	3.8
1	B	2	SER	3.2
1	A	-6	SER	2.7
1	A	237	ILE	2.0

### 6.2 Non-standard residues in protein, DNA, RNA chains [i](#)

There are no non-standard protein/DNA/RNA residues in this entry.

### 6.3 Carbohydrates [i](#)

There are no monosaccharides in this entry.

### 6.4 Ligands [i](#)

In the following table, the Atoms column lists the number of modelled atoms in the group and the number defined in the chemical component dictionary. The B-factors column lists the minimum, median, 95<sup>th</sup> percentile and maximum values of B factors of atoms in the group. The column labelled 'Q < 0.9' lists the number of atoms with occupancy less than 0.9.

Mol	Type	Chain	Res	Atoms	RSCC	RSR	B-factors(Å <sup>2</sup> )	Q<0.9
6	PEG	A	510	7/7	0.74	0.18	28,34,45,45	1

*Continued on next page...*

*Continued from previous page...*

Mol	Type	Chain	Res	Atoms	RSCC	RSR	B-factors( $\text{\AA}^2$ )	Q<0.9
6	PEG	B	506	7/7	0.74	0.16	39,41,43,52	1
6	PEG	A	511	7/7	0.75	0.17	29,32,49,49	1
3	EDO	B	505	4/4	0.80	0.22	39,40,41,42	1
2	GOL	A	503	6/6	0.80	0.21	20,38,43,43	2
6	PEG	A	508	7/7	0.82	0.17	33,35,41,42	1
4	PGE	A	506	10/10	0.84	0.17	43,45,47,48	1
5	1PE	A	507	13/16	0.84	0.12	27,32,35,36	1
6	PEG	A	509	7/7	0.86	0.17	21,30,49,51	1
2	GOL	B	504	6/6	0.86	0.12	28,33,35,36	2
3	EDO	A	504	4/4	0.89	0.11	29,30,30,31	1
3	EDO	B	503	4/4	0.92	0.10	20,26,27,27	1
3	EDO	A	505	4/4	0.95	0.09	19,20,21,21	1
2	GOL	B	502	6/6	0.95	0.08	19,24,28,28	2
2	GOL	A	502	6/6	0.96	0.07	15,21,24,24	2
2	GOL	B	501	6/6	0.97	0.06	11,13,15,16	2
2	GOL	A	501	6/6	0.98	0.04	11,13,15,16	2
7	CL	A	512	1/1	1.00	0.02	13,13,13,13	0

## 6.5 Other polymers [i](#)

There are no such residues in this entry.