



Full wwPDB X-ray Structure Validation Report ⓘ

Oct 31, 2021 – 11:11 AM EDT

PDB ID : 3GHN
Title : Crystal structure of the exosite-containing fragment of human ADAMTS13 (form-2)
Authors : Akiyama, M.; Takeda, S.; Kokame, K.; Takagi, J.; Miyata, T.
Deposited on : 2009-03-04
Resolution : 2.80 Å (reported)

This is a Full wwPDB X-ray Structure Validation Report for a publicly released PDB entry.

We welcome your comments at validation@mail.wwpdb.org

A user guide is available at

<https://www.wwpdb.org/validation/2017/XrayValidationReportHelp>

with specific help available everywhere you see the ⓘ symbol.

The following versions of software and data (see [references ⓘ](#)) were used in the production of this report:

MolProbity : 4.02b-467
Mogul : 1.8.5 (274361), CSD as541be (2020)
Xtriage (Phenix) : 1.13
EDS : 2.23.2
Percentile statistics : 20191225.v01 (using entries in the PDB archive December 25th 2019)
Refmac : 5.8.0158
CCP4 : 7.0.044 (Gargrove)
Ideal geometry (proteins) : Engh & Huber (2001)
Ideal geometry (DNA, RNA) : Parkinson et al. (1996)
Validation Pipeline (wwPDB-VP) : 2.23.2

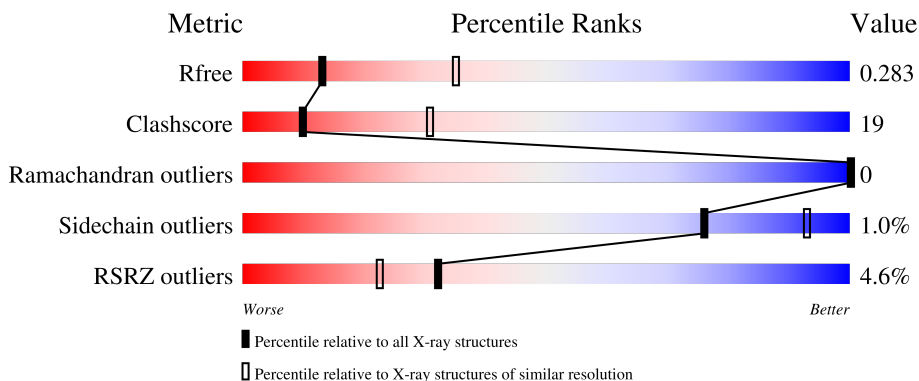
1 Overall quality at a glance

The following experimental techniques were used to determine the structure:

X-RAY DIFFRACTION

The reported resolution of this entry is 2.80 Å.

Percentile scores (ranging between 0-100) for global validation metrics of the entry are shown in the following graphic. The table shows the number of entries on which the scores are based.



Metric	Whole archive (#Entries)	Similar resolution (#Entries, resolution range(Å))
R_{free}	130704	3140 (2.80-2.80)
Clashscore	141614	3569 (2.80-2.80)
Ramachandran outliers	138981	3498 (2.80-2.80)
Sidechain outliers	138945	3500 (2.80-2.80)
RSRZ outliers	127900	3078 (2.80-2.80)

The table below summarises the geometric issues observed across the polymeric chains and their fit to the electron density. The red, orange, yellow and green segments of the lower bar indicate the fraction of residues that contain outliers for ≥ 3 , 2, 1 and 0 types of geometric quality criteria respectively. A grey segment represents the fraction of residues that are not modelled. The numeric value for each fraction is indicated below the corresponding segment, with a dot representing fractions $\leq 5\%$. The upper red bar (where present) indicates the fraction of residues that have poor fit to the electron density. The numeric value is given above the bar.

Mol	Chain	Length	Quality of chain
1	A	419	 4% 57% 31% 11%
2	B	2	 50% 50%
3	C	2	 100%

The following table lists non-polymeric compounds, carbohydrate monomers and non-standard residues in protein, DNA, RNA chains that are outliers for geometric or electron-density-fit criteria:

Mol	Type	Chain	Res	Chirality	Geometry	Clashes	Electron density
4	NAG	A	900	X	-	-	-
4	NAG	A	903	X	-	-	-

2 Entry composition [i](#)

There are 5 unique types of molecules in this entry. The entry contains 2987 atoms, of which 0 are hydrogens and 0 are deuteriums.

In the tables below, the ZeroOcc column contains the number of atoms modelled with zero occupancy, the AltConf column contains the number of residues with at least one atom in alternate conformation and the Trace column contains the number of residues modelled with at most 2 atoms.

- Molecule 1 is a protein called A disintegrin and metalloproteinase with thrombospondin motifs 13.

Mol	Chain	Residues	Atoms					ZeroOcc	AltConf	Trace
			Total	C	N	O	S			
1	A	371	2863	1764	531	536	32	0	0	0

There are 21 discrepancies between the modelled and reference sequences:

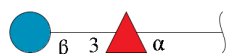
Chain	Residue	Modelled	Actual	Comment	Reference
A	285	GLY	-	expression tag	UNP Q76LX8
A	286	ARG	-	expression tag	UNP Q76LX8
A	524	LEU	SER	engineered mutation	UNP Q76LX8
A	686	SER	-	expression tag	UNP Q76LX8
A	687	ARG	-	expression tag	UNP Q76LX8
A	688	LEU	-	expression tag	UNP Q76LX8
A	689	GLU	-	expression tag	UNP Q76LX8
A	690	ASN	-	expression tag	UNP Q76LX8
A	691	LEU	-	expression tag	UNP Q76LX8
A	692	TYR	-	expression tag	UNP Q76LX8
A	693	PHE	-	expression tag	UNP Q76LX8
A	694	GLN	-	expression tag	UNP Q76LX8
A	695	SER	-	expression tag	UNP Q76LX8
A	696	ARG	-	expression tag	UNP Q76LX8
A	697	LEU	-	expression tag	UNP Q76LX8
A	698	GLU	-	expression tag	UNP Q76LX8
A	699	ASN	-	expression tag	UNP Q76LX8
A	700	LEU	-	expression tag	UNP Q76LX8
A	701	TYR	-	expression tag	UNP Q76LX8
A	702	PHE	-	expression tag	UNP Q76LX8
A	703	GLN	-	expression tag	UNP Q76LX8

- Molecule 2 is an oligosaccharide called 2-acetamido-2-deoxy-beta-D-glucopyranose-(1-4)-2-acetamido-2-deoxy-beta-D-glucopyranose.



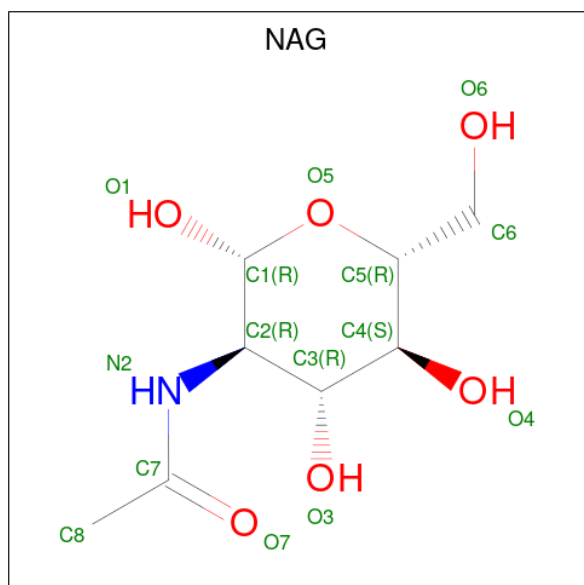
Mol	Chain	Residues	Atoms				ZeroOcc	AltConf	Trace
			Total	C	N	O			
2	B	2	28	16	2	10	0	0	0

- Molecule 3 is an oligosaccharide called beta-D-glucopyranose-(1-3)-alpha-L-fucopyranose.



Mol	Chain	Residues	Atoms			ZeroOcc	AltConf	Trace
			Total	C	O			
3	C	2	21	12	9	0	0	0

- Molecule 4 is 2-acetamido-2-deoxy-beta-D-glucopyranose (three-letter code: NAG) (formula: $C_8H_{15}NO_6$).



Mol	Chain	Residues	Atoms				ZeroOcc	AltConf
			Total	C	N	O		
4	A	1	14	8	1	5	0	0
4	A	1	14	8	1	5	0	0

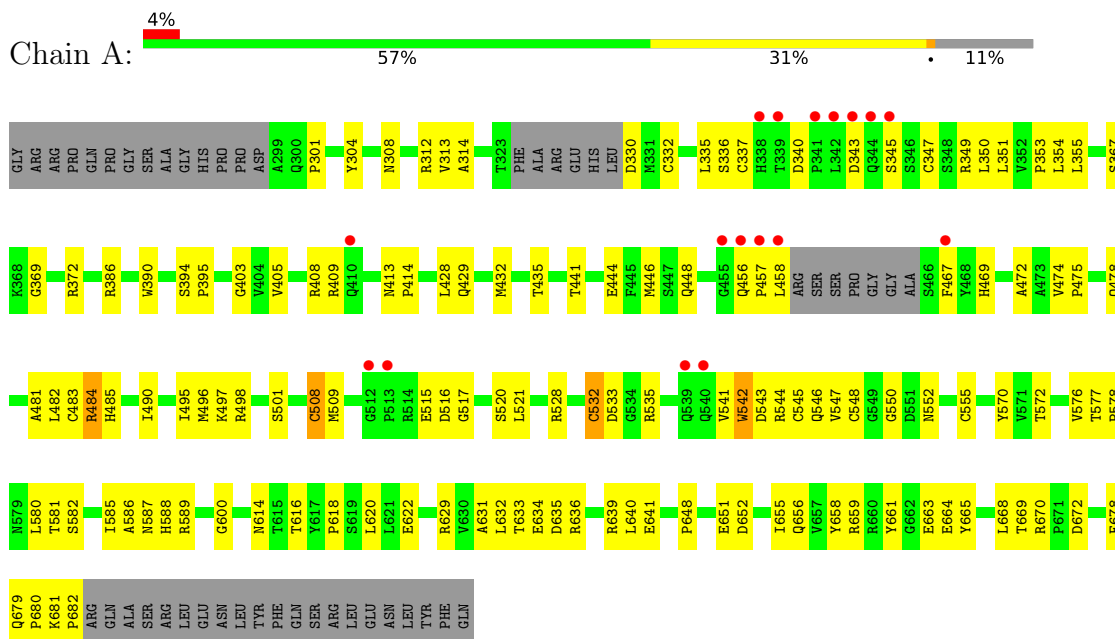
- Molecule 5 is water.

Mol	Chain	Residues	Atoms		ZeroOcc	AltConf
5	A	47	Total 47	O 47	0	0

3 Residue-property plots [i](#)

These plots are drawn for all protein, RNA, DNA and oligosaccharide chains in the entry. The first graphic for a chain summarises the proportions of the various outlier classes displayed in the second graphic. The second graphic shows the sequence view annotated by issues in geometry and electron density. Residues are color-coded according to the number of geometric quality criteria for which they contain at least one outlier: green = 0, yellow = 1, orange = 2 and red = 3 or more. A red dot above a residue indicates a poor fit to the electron density ($RSRZ > 2$). Stretches of 2 or more consecutive residues without any outlier are shown as a green connector. Residues present in the sample, but not in the model, are shown in grey.

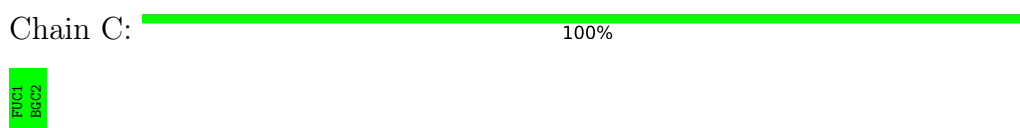
- Molecule 1: A disintegrin and metalloproteinase with thrombospondin motifs 13



- Molecule 2: 2-acetamido-2-deoxy-beta-D-glucopyranose-(1-4)-2-acetamido-2-deoxy-beta-D-glucopyranose



- Molecule 3: beta-D-glucopyranose-(1-3)-alpha-L-fucopyranose



4 Data and refinement statistics

Property	Value	Source
Space group	C 1 2 1	Depositor
Cell constants a, b, c, α , β , γ	138.58Å 51.37Å 76.37Å 90.00° 106.75° 90.00°	Depositor
Resolution (Å)	29.09 – 2.80 29.09 – 2.80	Depositor EDS
% Data completeness (in resolution range)	99.1 (29.09-2.80) 99.1 (29.09-2.80)	Depositor EDS
R_{merge}	0.06	Depositor
R_{sym}	(Not available)	Depositor
$\langle I/\sigma(I) \rangle$ ¹	3.07 (at 2.80Å)	Xtrriage
Refinement program	CNS 1.2	Depositor
R, R_{free}	0.229 , 0.280 0.243 , 0.283	Depositor DCC
R_{free} test set	647 reflections (5.05%)	wwPDB-VP
Wilson B-factor (Å ²)	54.2	Xtrriage
Anisotropy	0.122	Xtrriage
Bulk solvent k_{sol} (e/Å ³), B_{sol} (Å ²)	0.37 , 62.6	EDS
L-test for twinning ²	$\langle L \rangle = 0.49$, $\langle L^2 \rangle = 0.33$	Xtrriage
Estimated twinning fraction	No twinning to report.	Xtrriage
F_o, F_c correlation	0.92	EDS
Total number of atoms	2987	wwPDB-VP
Average B, all atoms (Å ²)	54.0	wwPDB-VP

Xtrriage's analysis on translational NCS is as follows: *The largest off-origin peak in the Patterson function is 7.07% of the height of the origin peak. No significant pseudotranslation is detected.*

¹Intensities estimated from amplitudes.

²Theoretical values of $\langle |L| \rangle$, $\langle L^2 \rangle$ for acentric reflections are 0.5, 0.333 respectively for untwinned datasets, and 0.375, 0.2 for perfectly twinned datasets.

5 Model quality [i](#)

5.1 Standard geometry [i](#)

Bond lengths and bond angles in the following residue types are not validated in this section: FUC, BGC, NAG

The Z score for a bond length (or angle) is the number of standard deviations the observed value is removed from the expected value. A bond length (or angle) with $|Z| > 5$ is considered an outlier worth inspection. RMSZ is the root-mean-square of all Z scores of the bond lengths (or angles).

Mol	Chain	Bond lengths		Bond angles	
		RMSZ	# Z >5	RMSZ	# Z >5
1	A	0.29	0/2926	0.58	1/3960 (0.0%)

There are no bond length outliers.

All (1) bond angle outliers are listed below:

Mol	Chain	Res	Type	Atoms	Z	Observed(°)	Ideal(°)
1	A	532	CYS	CA-CB-SG	-5.25	104.54	114.00

There are no chirality outliers.

There are no planarity outliers.

5.2 Too-close contacts [i](#)

In the following table, the Non-H and H(model) columns list the number of non-hydrogen atoms and hydrogen atoms in the chain respectively. The H(added) column lists the number of hydrogen atoms added and optimized by MolProbity. The Clashes column lists the number of clashes within the asymmetric unit, whereas Symm-Clashes lists symmetry-related clashes.

Mol	Chain	Non-H	H(model)	H(added)	Clashes	Symm-Clashes
1	A	2863	0	2741	110	0
2	B	28	0	25	1	0
3	C	21	0	19	0	0
4	A	28	0	26	0	0
5	A	47	0	0	0	0
All	All	2987	0	2811	110	0

The all-atom clashscore is defined as the number of clashes found per 1000 atoms (including hydrogen atoms). The all-atom clashscore for this structure is 19.

All (110) close contacts within the same asymmetric unit are listed below, sorted by their clash magnitude.

Atom-1	Atom-2	Interatomic distance (Å)	Clash overlap (Å)
1:A:517:GLY:HA3	1:A:542:TRP:HB2	1.64	0.80
1:A:616:THR:HG21	1:A:620:LEU:HD23	1.65	0.78
1:A:543:ASP:HB2	1:A:547:VAL:O	1.85	0.76
1:A:585:ILE:HD13	1:A:655:ILE:HG21	1.67	0.75
1:A:444:GLU:O	1:A:448:GLN:HG3	1.86	0.75
1:A:532:CYS:SG	1:A:533:ASP:N	2.60	0.74
1:A:659:ARG:NH2	1:A:670:ARG:HG2	2.02	0.74
1:A:663:GLU:OE2	1:A:670:ARG:HD3	1.92	0.69
1:A:517:GLY:CA	1:A:542:TRP:HB2	2.24	0.68
1:A:542:TRP:HH2	1:A:648:PRO:HD3	1.59	0.67
1:A:335:LEU:HD22	1:A:354:LEU:HD21	1.77	0.67
1:A:576:VAL:HA	1:A:580:LEU:HD12	1.77	0.67
1:A:336:SER:HA	1:A:349:ARG:HA	1.77	0.66
1:A:485:HIS:HB2	1:A:501:SER:HA	1.77	0.66
1:A:350:LEU:O	1:A:351:LEU:HB2	1.96	0.66
1:A:632:LEU:HD13	1:A:636:ARG:HD2	1.79	0.63
1:A:600:GLY:HA3	1:A:651:GLU:OE1	1.98	0.63
1:A:335:LEU:CD2	1:A:354:LEU:HD21	2.29	0.63
1:A:589:ARG:HG3	1:A:672:ASP:HB2	1.81	0.62
1:A:457:PRO:O	1:A:458:LEU:HG	2.01	0.60
1:A:386:ARG:HB2	1:A:413:ASN:O	2.01	0.60
1:A:577:THR:H	1:A:580:LEU:HD12	1.66	0.60
1:A:330:ASP:OD1	1:A:332:CYS:HB2	2.02	0.58
1:A:544:ARG:HG2	1:A:552:ASN:OD1	2.04	0.57
1:A:582:SER:HB2	1:A:678:PHE:CD1	2.39	0.57
1:A:639:ARG:HH22	2:B:2:NAG:H81	1.68	0.57
1:A:457:PRO:HB3	1:A:467:PHE:CE1	2.40	0.57
1:A:582:SER:HB2	1:A:678:PHE:HD1	1.70	0.56
1:A:408:ARG:HG2	1:A:428:LEU:HD13	1.86	0.56
1:A:570:TYR:CE2	1:A:658:TYR:HB2	2.41	0.56
1:A:458:LEU:HD12	1:A:498:ARG:NH1	2.22	0.55
1:A:664:GLU:H	1:A:664:GLU:CD	2.08	0.55
1:A:533:ASP:OD2	1:A:535:ARG:HD2	2.06	0.55
1:A:542:TRP:CH2	1:A:648:PRO:HD3	2.41	0.54
1:A:618:PRO:HD2	1:A:622:GLU:HG3	1.90	0.54
1:A:516:ASP:O	1:A:541:VAL:HG13	2.08	0.53
1:A:304:TYR:CZ	1:A:414:PRO:HB3	2.43	0.53
1:A:483:CYS:C	1:A:485:HIS:H	2.11	0.53
1:A:508:CYS:SG	1:A:509:MET:N	2.82	0.53
1:A:546:GLN:HG3	1:A:581:THR:CG2	2.40	0.52

Continued on next page...

Continued from previous page...

Atom-1	Atom-2	Interatomic distance (Å)	Clash overlap (Å)
1:A:543:ASP:CG	1:A:552:ASN:H	2.14	0.52
1:A:665:TYR:HB2	1:A:669:THR:HG21	1.91	0.51
1:A:555:CYS:HB2	1:A:679:GLN:O	2.10	0.51
1:A:441:THR:OG1	1:A:444:GLU:HG3	2.09	0.51
1:A:515:GLU:HG2	1:A:541:VAL:HG21	1.92	0.51
1:A:572:THR:HA	1:A:656:GLN:HG2	1.91	0.51
1:A:631:ALA:HB1	1:A:639:ARG:NH2	2.25	0.51
1:A:446:MET:HE2	1:A:472:ALA:HA	1.92	0.51
1:A:390:TRP:CH2	1:A:409:ARG:HD2	2.46	0.50
1:A:313:VAL:HG23	1:A:314:ALA:N	2.26	0.50
1:A:301:PRO:HB2	1:A:355:LEU:HB3	1.94	0.50
1:A:478:GLN:HB2	1:A:509:MET:O	2.12	0.50
1:A:635:ASP:OD2	1:A:635:ASP:N	2.42	0.50
1:A:490:ILE:HD12	1:A:490:ILE:N	2.27	0.50
1:A:481:ALA:O	1:A:484:ARG:HB2	2.13	0.49
1:A:372:ARG:HH11	1:A:372:ARG:HG2	1.78	0.49
1:A:308:ASN:HB3	1:A:312:ARG:HH12	1.78	0.48
1:A:372:ARG:HG2	1:A:372:ARG:NH1	2.29	0.47
1:A:543:ASP:OD1	1:A:552:ASN:N	2.47	0.47
1:A:308:ASN:HB3	1:A:312:ARG:NH1	2.28	0.47
1:A:353:PRO:HB2	1:A:369:GLY:HA2	1.96	0.47
1:A:578:PRO:HD3	1:A:652:ASP:OD2	2.13	0.47
1:A:541:VAL:HG12	1:A:542:TRP:N	2.30	0.47
1:A:541:VAL:CG1	1:A:542:TRP:N	2.78	0.47
1:A:548:CYS:C	1:A:550:GLY:H	2.18	0.46
1:A:543:ASP:C	1:A:545:CYS:H	2.17	0.46
1:A:546:GLN:OE1	1:A:648:PRO:HB3	2.15	0.46
1:A:632:LEU:HB2	1:A:636:ARG:HH11	1.79	0.46
1:A:456:GLN:N	1:A:456:GLN:OE1	2.48	0.46
1:A:485:HIS:HB2	1:A:501:SER:CA	2.45	0.46
1:A:632:LEU:CD1	1:A:636:ARG:HD2	2.45	0.46
1:A:587:ASN:HB3	1:A:641:GLU:HB2	1.97	0.46
1:A:457:PRO:HB3	1:A:467:PHE:CZ	2.51	0.45
1:A:589:ARG:HD3	1:A:668:LEU:HD12	1.98	0.45
1:A:394:SER:HB2	1:A:395:PRO:HD2	1.99	0.45
1:A:588:HIS:HB2	1:A:672:ASP:OD2	2.17	0.45
1:A:367:SER:HB3	1:A:372:ARG:HD2	1.99	0.45
1:A:390:TRP:CH2	1:A:429:GLN:HB2	2.52	0.45
1:A:340:ASP:HB3	1:A:343:ASP:HB2	1.98	0.44
1:A:543:ASP:C	1:A:545:CYS:N	2.70	0.44
1:A:495:ILE:HG22	1:A:496:MET:N	2.32	0.44

Continued on next page...

Continued from previous page...

Atom-1	Atom-2	Interatomic distance (Å)	Clash overlap (Å)
1:A:490:ILE:HD12	1:A:490:ILE:H	1.82	0.44
1:A:332:CYS:HA	1:A:354:LEU:HD12	1.98	0.44
1:A:458:LEU:HB2	1:A:498:ARG:HH12	1.83	0.44
1:A:484:ARG:O	1:A:497:LYS:HG3	2.18	0.44
1:A:394:SER:O	1:A:405:VAL:HG23	2.17	0.43
1:A:586:ALA:HA	1:A:641:GLU:O	2.18	0.43
1:A:469:HIS:O	1:A:490:ILE:HD13	2.18	0.43
1:A:446:MET:HE3	1:A:482:LEU:HD11	2.00	0.43
1:A:587:ASN:O	1:A:640:LEU:HD12	2.19	0.43
1:A:403:GLY:O	1:A:432:MET:HA	2.19	0.43
1:A:679:GLN:HB2	1:A:680:PRO:HD2	2.01	0.43
1:A:474:VAL:HG13	1:A:475:PRO:HA	2.01	0.43
1:A:435:THR:HG22	1:A:435:THR:O	2.18	0.42
1:A:546:GLN:HG3	1:A:581:THR:HG22	2.01	0.42
1:A:633:THR:O	1:A:634:GLU:C	2.57	0.42
1:A:659:ARG:HG2	1:A:661:TYR:O	2.19	0.42
1:A:681:LYS:HA	1:A:682:PRO:HD3	1.96	0.42
1:A:588:HIS:HB2	1:A:672:ASP:HB3	2.01	0.42
1:A:520:SER:HA	1:A:528:ARG:O	2.19	0.42
1:A:616:THR:HG21	1:A:620:LEU:CD2	2.45	0.41
1:A:337:CYS:O	1:A:347:CYS:HA	2.20	0.41
1:A:548:CYS:C	1:A:550:GLY:N	2.73	0.41
1:A:577:THR:N	1:A:580:LEU:HD12	2.34	0.41
1:A:343:ASP:C	1:A:345:SER:H	2.24	0.41
1:A:515:GLU:HG3	1:A:541:VAL:HG11	2.03	0.41
1:A:614:ASN:OD1	1:A:629:ARG:HA	2.20	0.41
1:A:636:ARG:HA	1:A:636:ARG:HD3	1.61	0.41
1:A:665:TYR:CB	1:A:669:THR:HG21	2.50	0.41
1:A:521:LEU:N	1:A:521:LEU:HD12	2.37	0.40

There are no symmetry-related clashes.

5.3 Torsion angles [i](#)

5.3.1 Protein backbone [i](#)

In the following table, the Percentiles column shows the percent Ramachandran outliers of the chain as a percentile score with respect to all X-ray entries followed by that with respect to entries of similar resolution.

The Analysed column shows the number of residues for which the backbone conformation was analysed, and the total number of residues.

Mol	Chain	Analysed	Favoured	Allowed	Outliers	Percentiles	
1	A	365/419 (87%)	340 (93%)	25 (7%)	0	100	100

There are no Ramachandran outliers to report.

5.3.2 Protein sidechains [i](#)

In the following table, the Percentiles column shows the percent sidechain outliers of the chain as a percentile score with respect to all X-ray entries followed by that with respect to entries of similar resolution.

The Analysed column shows the number of residues for which the sidechain conformation was analysed, and the total number of residues.

Mol	Chain	Analysed	Rotameric	Outliers	Percentiles	
1	A	311/350 (89%)	308 (99%)	3 (1%)	76	93

All (3) residues with a non-rotameric sidechain are listed below:

Mol	Chain	Res	Type
1	A	484	ARG
1	A	508	CYS
1	A	542	TRP

Sometimes sidechains can be flipped to improve hydrogen bonding and reduce clashes. There are no such sidechains identified.

5.3.3 RNA [i](#)

There are no RNA molecules in this entry.

5.4 Non-standard residues in protein, DNA, RNA chains [i](#)

There are no non-standard protein/DNA/RNA residues in this entry.

5.5 Carbohydrates [i](#)

4 monosaccharides are modelled in this entry.

In the following table, the Counts columns list the number of bonds (or angles) for which Mogul statistics could be retrieved, the number of bonds (or angles) that are observed in the model and the number of bonds (or angles) that are defined in the Chemical Component Dictionary. The

Link column lists molecule types, if any, to which the group is linked. The Z score for a bond length (or angle) is the number of standard deviations the observed value is removed from the expected value. A bond length (or angle) with $|Z| > 2$ is considered an outlier worth inspection. RMSZ is the root-mean-square of all Z scores of the bond lengths (or angles).

Mol	Type	Chain	Res	Link	Bond lengths			Bond angles		
					Counts	RMSZ	# Z > 2	Counts	RMSZ	# Z > 2
2	NAG	B	1	2,1	14,14,15	0.50	0	17,19,21	0.76	0
2	NAG	B	2	2	14,14,15	0.52	0	17,19,21	0.71	1 (5%)
3	FUC	C	1	3,1	10,10,11	0.46	0	14,14,16	0.26	0
3	BGC	C	2	3	11,11,12	0.41	0	15,15,17	0.51	0

In the following table, the Chirals column lists the number of chiral outliers, the number of chiral centers analysed, the number of these observed in the model and the number defined in the Chemical Component Dictionary. Similar counts are reported in the Torsion and Rings columns. '-' means no outliers of that kind were identified.

Mol	Type	Chain	Res	Link	Chirals	Torsions	Rings
2	NAG	B	1	2,1	-	3/6/23/26	0/1/1/1
2	NAG	B	2	2	-	2/6/23/26	0/1/1/1
3	FUC	C	1	3,1	-	-	0/1/1/1
3	BGC	C	2	3	-	0/2/19/22	0/1/1/1

There are no bond length outliers.

All (1) bond angle outliers are listed below:

Mol	Chain	Res	Type	Atoms	Z	Observed(°)	Ideal(°)
2	B	2	NAG	C2-N2-C7	-2.12	119.88	122.90

There are no chirality outliers.

All (5) torsion outliers are listed below:

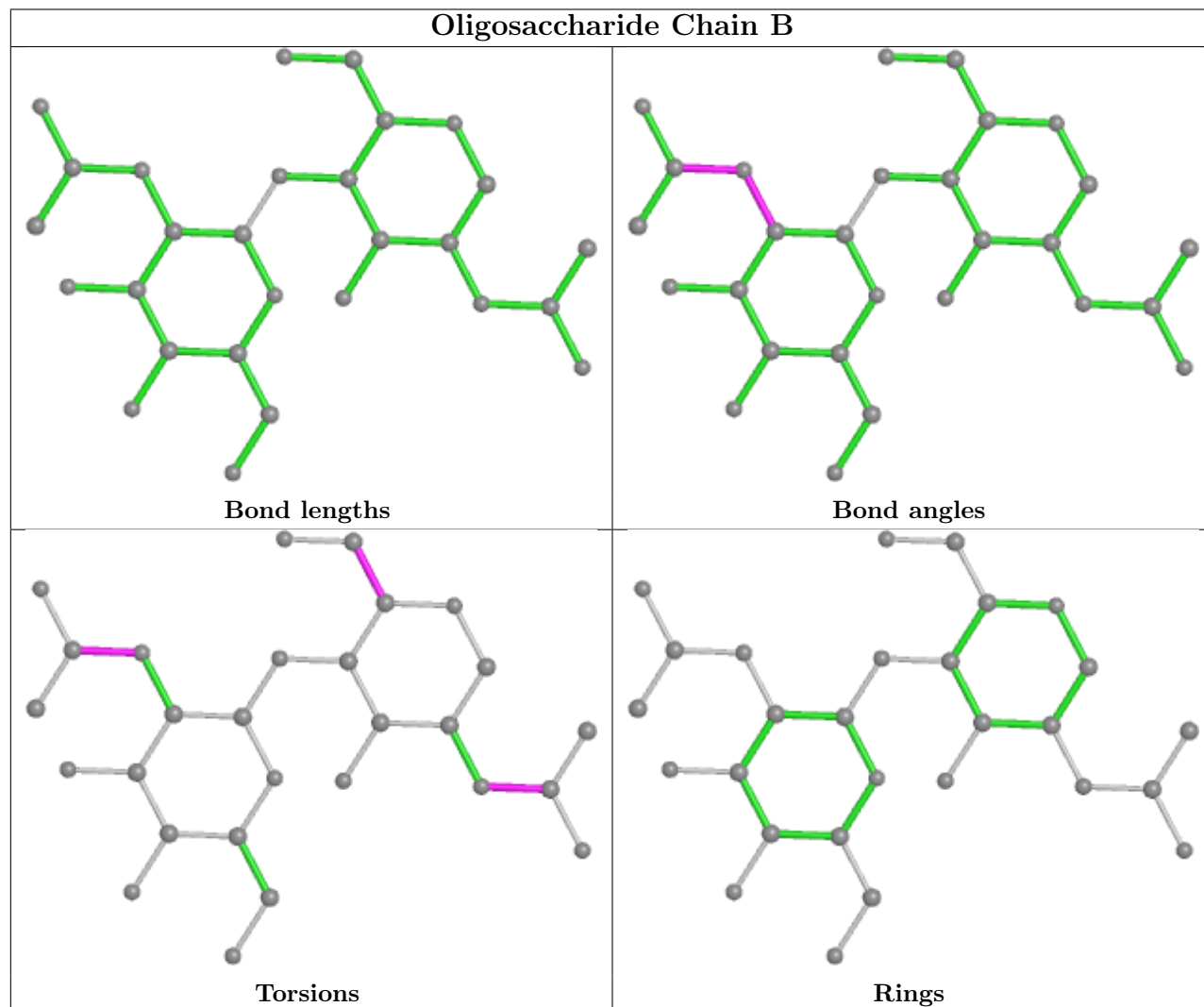
Mol	Chain	Res	Type	Atoms
2	B	1	NAG	C8-C7-N2-C2
2	B	1	NAG	O7-C7-N2-C2
2	B	2	NAG	C8-C7-N2-C2
2	B	2	NAG	O7-C7-N2-C2
2	B	1	NAG	C4-C5-C6-O6

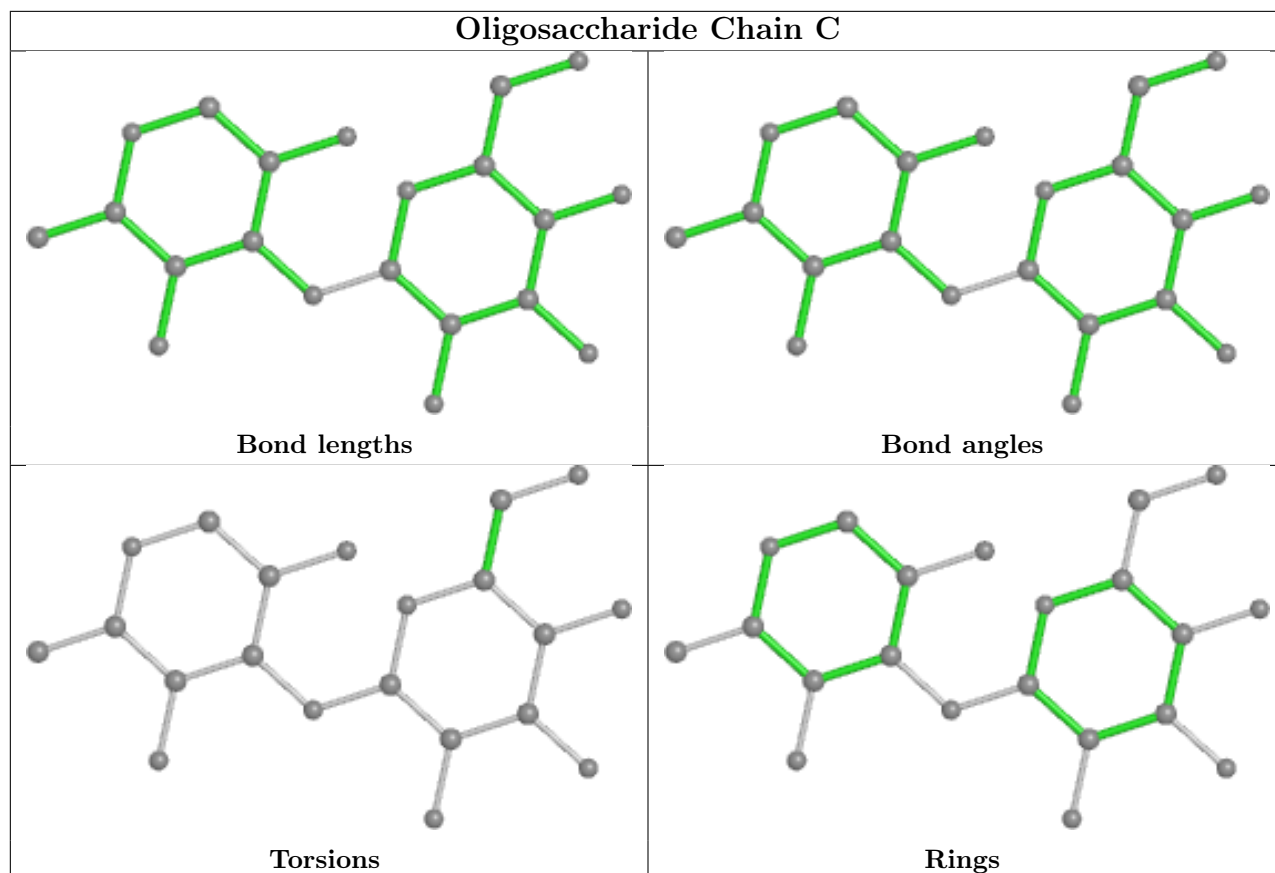
There are no ring outliers.

1 monomer is involved in 1 short contact:

Mol	Chain	Res	Type	Clashes	Symm-Clashes
2	B	2	NAG	1	0

The following is a two-dimensional graphical depiction of Mogul quality analysis of bond lengths, bond angles, torsion angles, and ring geometry for oligosaccharide.





5.6 Ligand geometry [i](#)

2 ligands are modelled in this entry.

In the following table, the Counts columns list the number of bonds (or angles) for which Mogul statistics could be retrieved, the number of bonds (or angles) that are observed in the model and the number of bonds (or angles) that are defined in the Chemical Component Dictionary. The Link column lists molecule types, if any, to which the group is linked. The Z score for a bond length (or angle) is the number of standard deviations the observed value is removed from the expected value. A bond length (or angle) with $|Z| > 2$ is considered an outlier worth inspection. RMSZ is the root-mean-square of all Z scores of the bond lengths (or angles).

Mol	Type	Chain	Res	Link	Bond lengths			Bond angles		
					Counts	RMSZ	$\# Z > 2$	Counts	RMSZ	$\# Z > 2$
4	NAG	A	900	1	14,14,15	0.62	0	17,19,21	0.79	1 (5%)
4	NAG	A	903	1	14,14,15	0.81	1 (7%)	17,19,21	0.87	0

In the following table, the Chirals column lists the number of chiral outliers, the number of chiral centers analysed, the number of these observed in the model and the number defined in the Chemical Component Dictionary. Similar counts are reported in the Torsion and Rings columns. '–' means no outliers of that kind were identified.

Mol	Type	Chain	Res	Link	Chirals	Torsions	Rings
4	NAG	A	900	1	1/1/5/7	4/6/23/26	0/1/1/1
4	NAG	A	903	1	1/1/5/7	6/6/23/26	0/1/1/1

All (1) bond length outliers are listed below:

Mol	Chain	Res	Type	Atoms	Z	Observed(Å)	Ideal(Å)
4	A	903	NAG	C1-C2	2.47	1.56	1.52

All (1) bond angle outliers are listed below:

Mol	Chain	Res	Type	Atoms	Z	Observed(°)	Ideal(°)
4	A	900	NAG	C2-N2-C7	-2.07	119.95	122.90

All (2) chirality outliers are listed below:

Mol	Chain	Res	Type	Atom
4	A	900	NAG	C1
4	A	903	NAG	C1

All (10) torsion outliers are listed below:

Mol	Chain	Res	Type	Atoms
4	A	903	NAG	C8-C7-N2-C2
4	A	903	NAG	O7-C7-N2-C2
4	A	903	NAG	O5-C5-C6-O6
4	A	903	NAG	C4-C5-C6-O6
4	A	900	NAG	O5-C5-C6-O6
4	A	900	NAG	C4-C5-C6-O6
4	A	903	NAG	C1-C2-N2-C7
4	A	900	NAG	C8-C7-N2-C2
4	A	900	NAG	O7-C7-N2-C2
4	A	903	NAG	C3-C2-N2-C7

There are no ring outliers.

No monomer is involved in short contacts.

5.7 Other polymers [i](#)

There are no such residues in this entry.

5.8 Polymer linkage issues

There are no chain breaks in this entry.

6 Fit of model and data [i](#)

6.1 Protein, DNA and RNA chains [i](#)

In the following table, the column labelled ‘#RSRZ> 2’ contains the number (and percentage) of RSRZ outliers, followed by percent RSRZ outliers for the chain as percentile scores relative to all X-ray entries and entries of similar resolution. The OWAB column contains the minimum, median, 95th percentile and maximum values of the occupancy-weighted average B-factor per residue. The column labelled ‘Q< 0.9’ lists the number of (and percentage) of residues with an average occupancy less than 0.9.

Mol	Chain	Analysed	<RSRZ>	#RSRZ>2	OWAB(Å ²)	Q<0.9
1	A	371/419 (88%)	0.07	17 (4%) 32 22	26, 51, 85, 124	0

All (17) RSRZ outliers are listed below:

Mol	Chain	Res	Type	RSRZ
1	A	342	LEU	6.3
1	A	458	LEU	4.1
1	A	341	PRO	4.0
1	A	467	PHE	3.6
1	A	344	GLN	3.6
1	A	457	PRO	3.5
1	A	455	GLY	3.1
1	A	539	GLN	2.9
1	A	343	ASP	2.6
1	A	339	THR	2.6
1	A	456	GLN	2.5
1	A	338	HIS	2.5
1	A	540	GLN	2.4
1	A	345	SER	2.3
1	A	513	PRO	2.2
1	A	410	GLN	2.1
1	A	512	GLY	2.0

6.2 Non-standard residues in protein, DNA, RNA chains [i](#)

There are no non-standard protein/DNA/RNA residues in this entry.

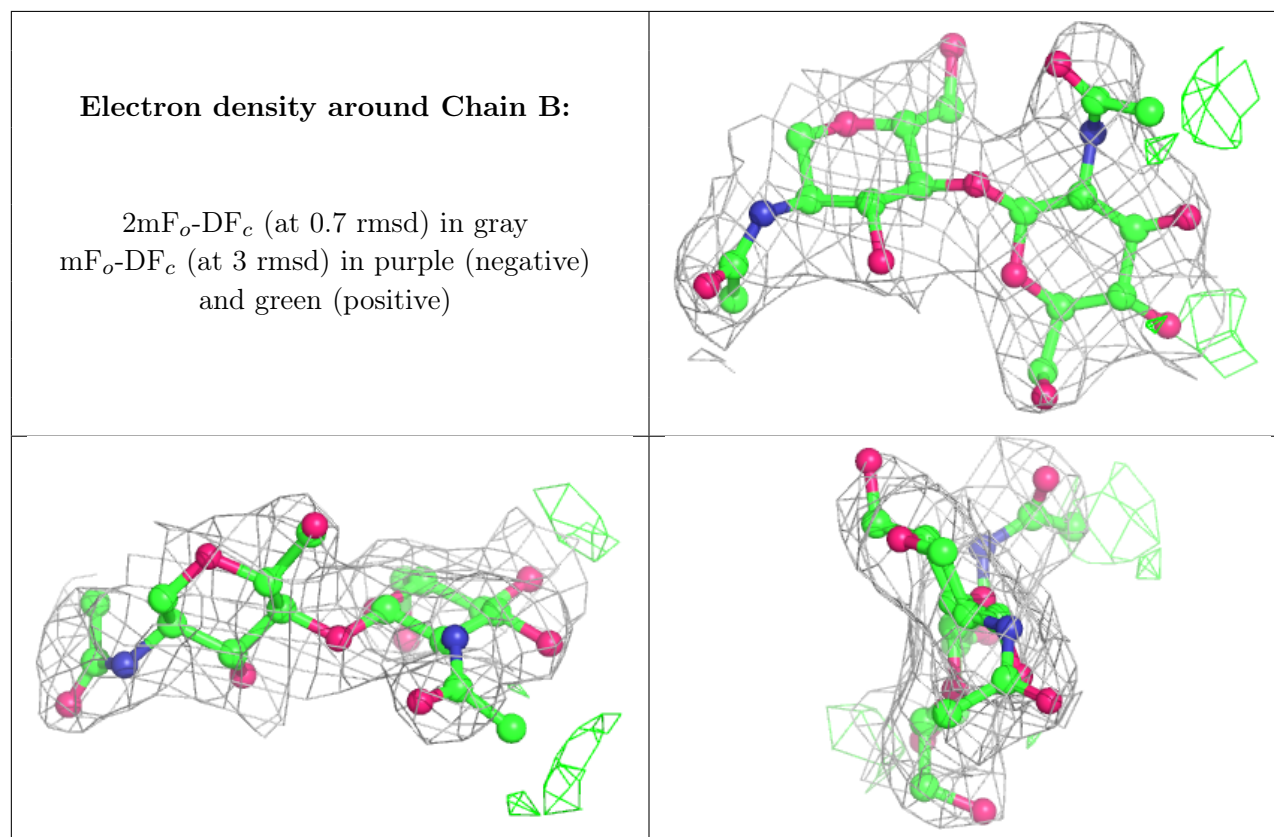
6.3 Carbohydrates [i](#)

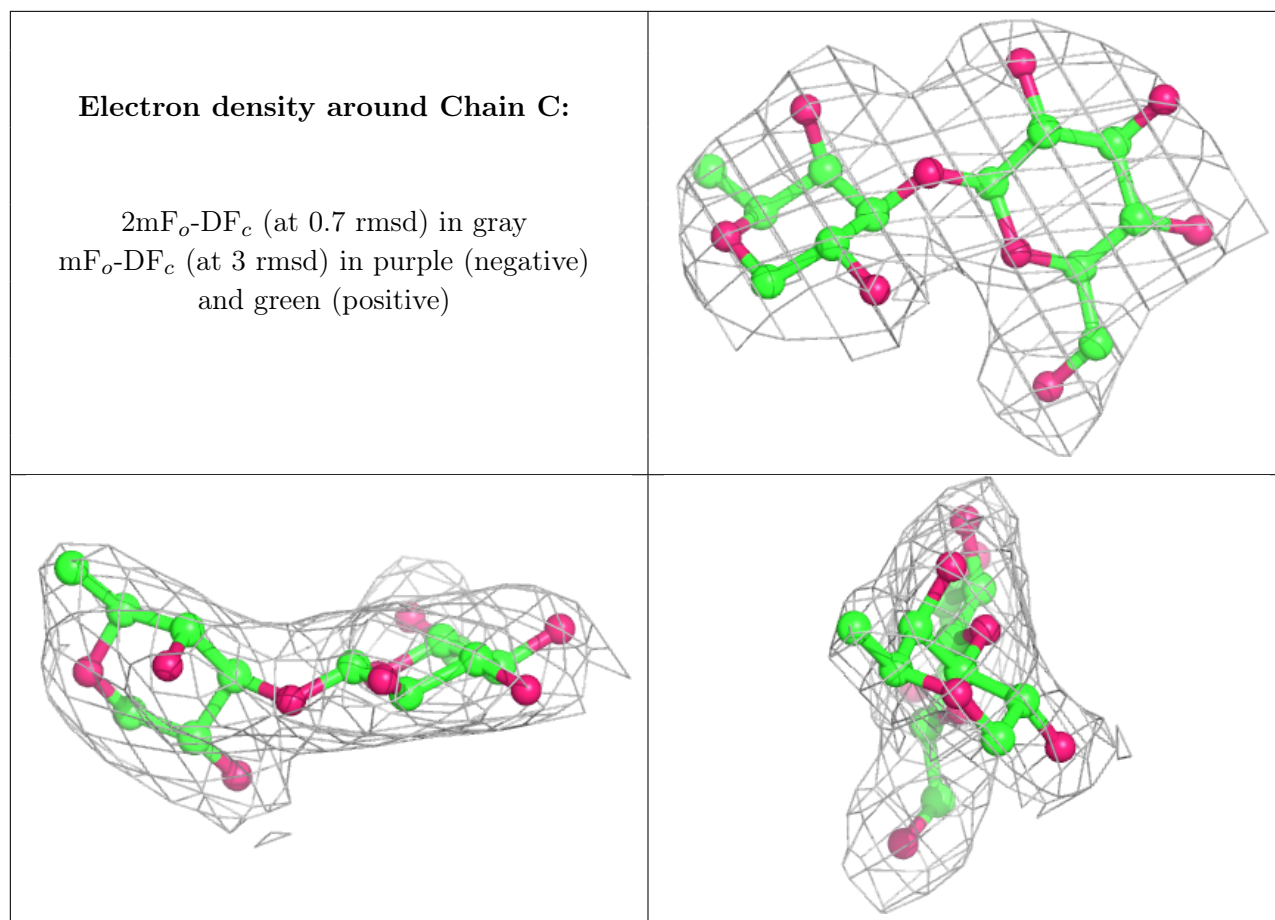
In the following table, the Atoms column lists the number of modelled atoms in the group and the number defined in the chemical component dictionary. The B-factors column lists the minimum,

median, 95th percentile and maximum values of B factors of atoms in the group. The column labelled 'Q < 0.9' lists the number of atoms with occupancy less than 0.9.

Mol	Type	Chain	Res	Atoms	RSCC	RSR	B-factors(Å ²)	Q<0.9
2	NAG	B	2	14/15	0.91	0.22	36,53,70,74	0
3	BGC	C	2	11/12	0.95	0.17	36,40,49,58	0
3	FUC	C	1	10/11	0.96	0.14	24,38,52,52	0
2	NAG	B	1	14/15	0.96	0.16	29,38,53,56	0

The following is a graphical depiction of the model fit to experimental electron density for oligosaccharide. Each fit is shown from different orientation to approximate a three-dimensional view.





6.4 Ligands [i](#)

In the following table, the Atoms column lists the number of modelled atoms in the group and the number defined in the chemical component dictionary. The B-factors column lists the minimum, median, 95th percentile and maximum values of B factors of atoms in the group. The column labelled 'Q < 0.9' lists the number of atoms with occupancy less than 0.9.

Mol	Type	Chain	Res	Atoms	RSCC	RSR	B-factors(Å ²)	Q<0.9
4	NAG	A	900	14/15	0.86	0.32	53,75,82,82	0
4	NAG	A	903	14/15	0.87	0.36	63,82,93,102	0

6.5 Other polymers [i](#)

There are no such residues in this entry.