



# Full wwPDB X-ray Structure Validation Report ⓘ

Nov 11, 2024 – 11:09 PM EST

PDB ID : 2GJ8  
Title : Structure of the MnmE G-domain in complex with GDP\*AlF4-, Mg<sup>2+</sup> and K<sup>+</sup>  
Authors : Scrima, A.; Wittinghofer, A.  
Deposited on : 2006-03-30  
Resolution : 1.70 Å(reported)

This is a Full wwPDB X-ray Structure Validation Report for a publicly released PDB entry.

We welcome your comments at [validation@mail.wwpdb.org](mailto:validation@mail.wwpdb.org)

A user guide is available at

<https://www.wwpdb.org/validation/2017/XrayValidationReportHelp>

with specific help available everywhere you see the ⓘ symbol.

The types of validation reports are described at

<http://www.wwpdb.org/validation/2017/FAQs#types>.

---

The following versions of software and data (see [references ⓘ](#)) were used in the production of this report:

MolProbity : 4.02b-467  
Mogul : 2022.3.0, CSD as543be (2022)  
Xtrriage (Phenix) : 1.20.1  
EDS : 3.0  
buster-report : 1.1.7 (2018)  
Percentile statistics : 20231227.v01 (using entries in the PDB archive December 27th 2023)  
CCP4 : 9.0.003 (Gargrove)  
Density-Fitness : 1.0.11  
Ideal geometry (proteins) : Engh & Huber (2001)  
Ideal geometry (DNA, RNA) : Parkinson et al. (1996)  
Validation Pipeline (wwPDB-VP) : 2.39

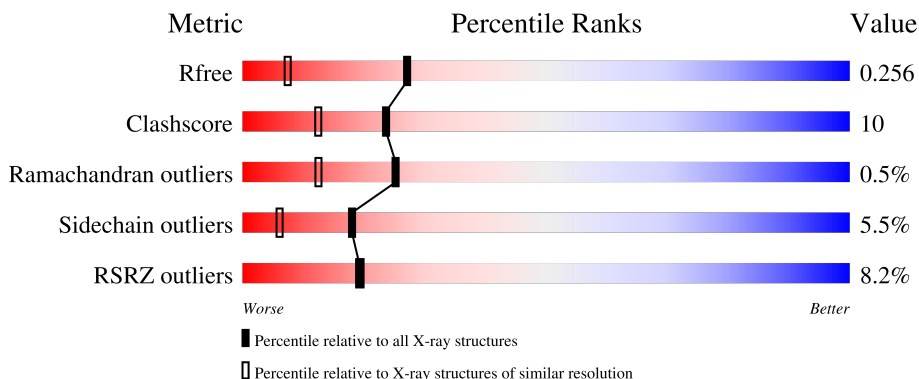
# 1 Overall quality at a glance

The following experimental techniques were used to determine the structure:

*X-RAY DIFFRACTION*

The reported resolution of this entry is 1.70 Å.

Percentile scores (ranging between 0-100) for global validation metrics of the entry are shown in the following graphic. The table shows the number of entries on which the scores are based.



Metric	Whole archive (#Entries)	Similar resolution (#Entries, resolution range(Å))
$R_{free}$	164625	5161 (1.70-1.70)
Clashscore	180529	5671 (1.70-1.70)
Ramachandran outliers	177936	5594 (1.70-1.70)
Sidechain outliers	177891	5594 (1.70-1.70)
RSRZ outliers	164620	5159 (1.70-1.70)

The table below summarises the geometric issues observed across the polymeric chains and their fit to the electron density. The red, orange, yellow and green segments of the lower bar indicate the fraction of residues that contain outliers for  $\geq 3$ , 2, 1 and 0 types of geometric quality criteria respectively. A grey segment represents the fraction of residues that are not modelled. The numeric value for each fraction is indicated below the corresponding segment, with a dot representing fractions  $\leq 5\%$ . The upper red bar (where present) indicates the fraction of residues that have poor fit to the electron density. The numeric value is given above the bar.

Mol	Chain	Length	Quality of chain
1	A	172	 4% 81% 12% 6%
1	B	172	 5% 80% 11% 7%
1	C	172	 2% 77% 15% 6%
1	D	172	 19% 73% 20% 6%

## 2 Entry composition [i](#)

There are 7 unique types of molecules in this entry. The entry contains 5694 atoms, of which 0 are hydrogens and 0 are deuteriums.

In the tables below, the ZeroOcc column contains the number of atoms modelled with zero occupancy, the AltConf column contains the number of residues with at least one atom in alternate conformation and the Trace column contains the number of residues modelled with at most 2 atoms.

- Molecule 1 is a protein called tRNA modification GTPase trmE.

Mol	Chain	Residues	Atoms					ZeroOcc	AltConf	Trace
			Total	C	N	O	Se			
1	A	161	1224	760	225	234	5	0	0	0
1	B	160	1220	758	224	233	5	0	0	0
1	C	161	1224	760	225	234	5	0	0	0
1	D	172	1298	803	237	252	6	0	0	0

There are 36 discrepancies between the modelled and reference sequences:

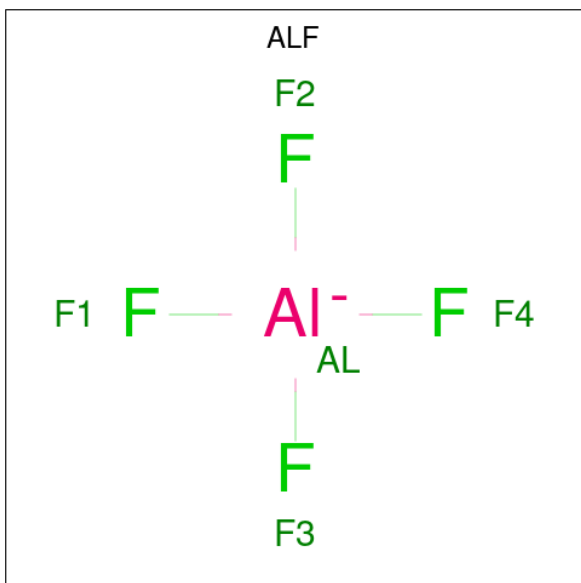
Chain	Residue	Modelled	Actual	Comment	Reference
A	213	GLY	-	cloning artifact	UNP P25522
A	214	SER	-	cloning artifact	UNP P25522
A	215	HIS	-	cloning artifact	UNP P25522
A	217	MSE	MET	modified residue	UNP P25522
A	264	MSE	MET	modified residue	UNP P25522
A	302	MSE	MET	modified residue	UNP P25522
A	346	MSE	MET	modified residue	UNP P25522
A	376	MSE	MET	modified residue	UNP P25522
A	382	MSE	MET	modified residue	UNP P25522
B	213	GLY	-	cloning artifact	UNP P25522
B	214	SER	-	cloning artifact	UNP P25522
B	215	HIS	-	cloning artifact	UNP P25522
B	217	MSE	MET	modified residue	UNP P25522
B	264	MSE	MET	modified residue	UNP P25522
B	302	MSE	MET	modified residue	UNP P25522
B	346	MSE	MET	modified residue	UNP P25522
B	376	MSE	MET	modified residue	UNP P25522
B	382	MSE	MET	modified residue	UNP P25522
C	213	GLY	-	cloning artifact	UNP P25522
C	214	SER	-	cloning artifact	UNP P25522
C	215	HIS	-	cloning artifact	UNP P25522

*Continued on next page...*

Continued from previous page...

Chain	Residue	Modelled	Actual	Comment	Reference
C	217	MSE	MET	modified residue	UNP P25522
C	264	MSE	MET	modified residue	UNP P25522
C	302	MSE	MET	modified residue	UNP P25522
C	346	MSE	MET	modified residue	UNP P25522
C	376	MSE	MET	modified residue	UNP P25522
C	382	MSE	MET	modified residue	UNP P25522
D	213	GLY	-	cloning artifact	UNP P25522
D	214	SER	-	cloning artifact	UNP P25522
D	215	HIS	-	cloning artifact	UNP P25522
D	217	MSE	MET	modified residue	UNP P25522
D	264	MSE	MET	modified residue	UNP P25522
D	302	MSE	MET	modified residue	UNP P25522
D	346	MSE	MET	modified residue	UNP P25522
D	376	MSE	MET	modified residue	UNP P25522
D	382	MSE	MET	modified residue	UNP P25522

- Molecule 2 is TETRAFLUOROALUMINATE ION (three-letter code: ALF) (formula:  $\text{AlF}_4$ ).



Mol	Chain	Residues	Atoms			ZeroOcc	AltConf
2	A	1	Total	Al	F	0	0
			5	1	4		
2	B	1	Total	Al	F	0	0
			5	1	4		
2	C	1	Total	Al	F	0	0
			5	1	4		
2	D	1	Total	Al	F	0	0
			5	1	4		

- Molecule 3 is MAGNESIUM ION (three-letter code: MG) (formula: Mg).

Mol	Chain	Residues	Atoms	ZeroOcc	AltConf
3	A	1	Total Mg 1 1	0	0
3	B	1	Total Mg 1 1	0	0
3	C	1	Total Mg 1 1	0	0
3	D	1	Total Mg 1 1	0	0

- Molecule 4 is POTASSIUM ION (three-letter code: K) (formula: K).

Mol	Chain	Residues	Atoms	ZeroOcc	AltConf
4	A	1	Total K 1 1	0	0
4	B	1	Total K 1 1	0	0
4	C	1	Total K 1 1	0	0
4	D	1	Total K 1 1	0	0

- Molecule 5 is SELENIUM ATOM (three-letter code: SE) (formula: Se).

Mol	Chain	Residues	Atoms	ZeroOcc	AltConf
5	A	1	Total Se 1 1	0	0
5	C	1	Total Se 1 1	0	0
5	D	1	Total Se 1 1	0	0

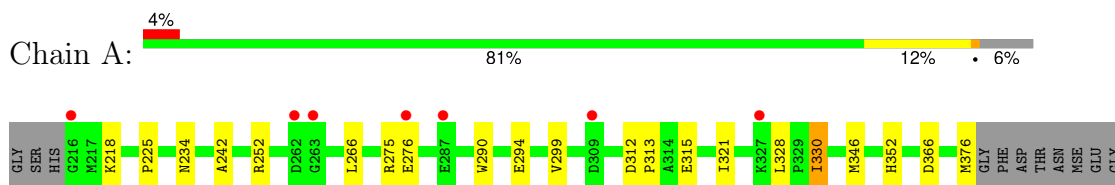
- Molecule 6 is GUANOSINE-5'-DIPHOSPHATE (three-letter code: GDP) (formula: C<sub>10</sub>H<sub>15</sub>N<sub>5</sub>O<sub>11</sub>P<sub>2</sub>).



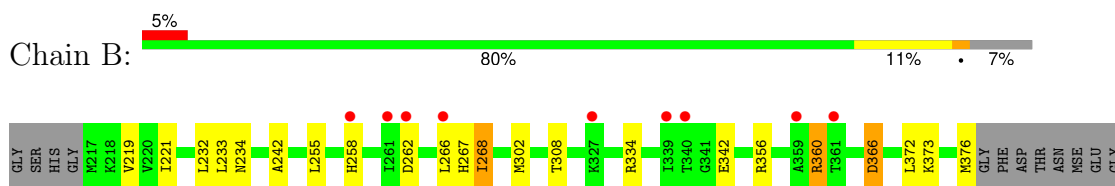
### 3 Residue-property plots i

These plots are drawn for all protein, RNA, DNA and oligosaccharide chains in the entry. The first graphic for a chain summarises the proportions of the various outlier classes displayed in the second graphic. The second graphic shows the sequence view annotated by issues in geometry and electron density. Residues are color-coded according to the number of geometric quality criteria for which they contain at least one outlier: green = 0, yellow = 1, orange = 2 and red = 3 or more. A red dot above a residue indicates a poor fit to the electron density ( $RSRZ > 2$ ). Stretches of 2 or more consecutive residues without any outlier are shown as a green connector. Residues present in the sample, but not in the model, are shown in grey.

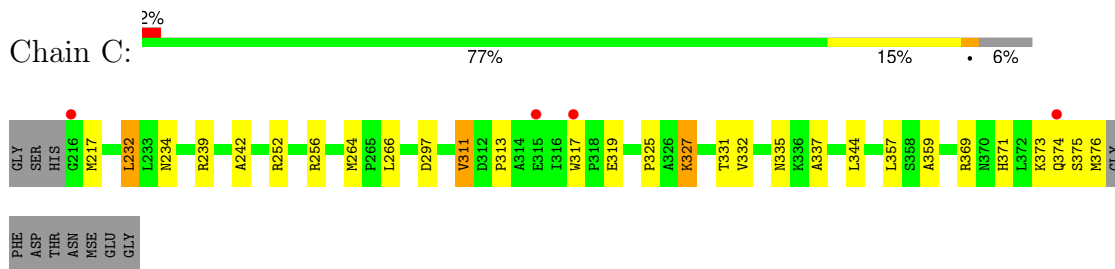
- Molecule 1: tRNA modification GTPase trmE



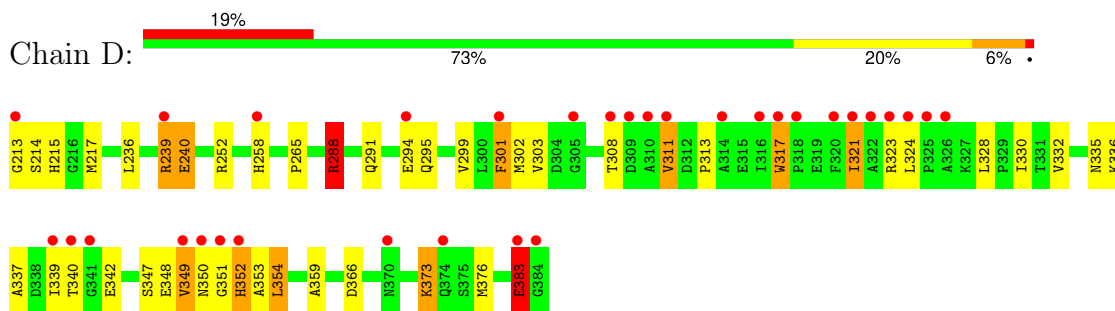
- Molecule 1: tRNA modification GTPase trmE



- Molecule 1: tRNA modification GTPase trmE



- Molecule 1: tRNA modification GTPase trmE



## 4 Data and refinement statistics

Property	Value	Source
Space group	P 1 21 1	Depositor
Cell constants a, b, c, $\alpha$ , $\beta$ , $\gamma$	57.54Å 70.23Å 91.30Å 90.00° 95.51° 90.00°	Depositor
Resolution (Å)	20.00 – 1.70 20.00 – 1.70	Depositor EDS
% Data completeness (in resolution range)	99.7 (20.00-1.70) 99.7 (20.00-1.70)	Depositor EDS
$R_{merge}$	0.08	Depositor
$R_{sym}$	(Not available)	Depositor
$\langle I/\sigma(I) \rangle$ <sup>1</sup>	4.26 (at 1.70Å)	Xtrriage
Refinement program	REFMAC 5.2.0005	Depositor
R, $R_{free}$	0.205 , 0.256 0.204 , 0.256	Depositor DCC
$R_{free}$ test set	3975 reflections (5.00%)	wwPDB-VP
Wilson B-factor (Å <sup>2</sup> )	18.1	Xtrriage
Anisotropy	0.064	Xtrriage
Bulk solvent $k_{sol}$ (e/Å <sup>3</sup> ), $B_{sol}$ (Å <sup>2</sup> )	0.37 , 42.2	EDS
L-test for twinning <sup>2</sup>	$\langle  L  \rangle = 0.48$ , $\langle L^2 \rangle = 0.31$	Xtrriage
Estimated twinning fraction	No twinning to report.	Xtrriage
$F_o, F_c$ correlation	0.94	EDS
Total number of atoms	5694	wwPDB-VP
Average B, all atoms (Å <sup>2</sup> )	21.0	wwPDB-VP

Xtrriage's analysis on translational NCS is as follows: *The largest off-origin peak in the Patterson function is 4.06% of the height of the origin peak. No significant pseudotranslation is detected.*

<sup>1</sup>Intensities estimated from amplitudes.

<sup>2</sup>Theoretical values of  $\langle |L| \rangle$ ,  $\langle L^2 \rangle$  for acentric reflections are 0.5, 0.333 respectively for untwinned datasets, and 0.375, 0.2 for perfectly twinned datasets.



## 5 Model quality [i](#)

### 5.1 Standard geometry [i](#)

Bond lengths and bond angles in the following residue types are not validated in this section: GDP, K, MG, ALF, SE

The Z score for a bond length (or angle) is the number of standard deviations the observed value is removed from the expected value. A bond length (or angle) with  $|Z| > 5$  is considered an outlier worth inspection. RMSZ is the root-mean-square of all Z scores of the bond lengths (or angles).

Mol	Chain	Bond lengths		Bond angles	
		RMSZ	# $ Z  > 5$	RMSZ	# $ Z  > 5$
1	A	0.68	0/1235	0.69	1/1665 (0.1%)
1	B	0.63	0/1232	0.71	0/1663
1	C	0.68	0/1235	0.77	2/1665 (0.1%)
1	D	0.61	0/1309	0.77	2/1762 (0.1%)
All	All	0.65	0/5011	0.74	5/6755 (0.1%)

Chiral center outliers are detected by calculating the chiral volume of a chiral center and verifying if the center is modelled as a planar moiety or with the opposite hand. A planarity outlier is detected by checking planarity of atoms in a peptide group, atoms in a mainchain group or atoms of a sidechain that are expected to be planar.

Mol	Chain	#Chirality outliers	#Planarity outliers
1	D	0	1

There are no bond length outliers.

All (5) bond angle outliers are listed below:

Mol	Chain	Res	Type	Atoms	Z	Observed(°)	Ideal(°)
1	D	288	ARG	NE-CZ-NH2	9.39	124.99	120.30
1	D	288	ARG	NE-CZ-NH1	-8.04	116.28	120.30
1	C	311	VAL	CG1-CB-CG2	7.07	122.21	110.90
1	C	232	LEU	CB-CG-CD2	5.96	121.12	111.00
1	A	346	MSE	CB-CG-SE	-5.49	96.23	112.70

There are no chirality outliers.

All (1) planarity outliers are listed below:

Mol	Chain	Res	Type	Group
1	D	213	GLY	Peptide

## 5.2 Too-close contacts

In the following table, the Non-H and H(model) columns list the number of non-hydrogen atoms and hydrogen atoms in the chain respectively. The H(added) column lists the number of hydrogen atoms added and optimized by MolProbity. The Clashes column lists the number of clashes within the asymmetric unit, whereas Symm-Clashes lists symmetry-related clashes.

Mol	Chain	Non-H	H(model)	H(added)	Clashes	Symm-Clashes
1	A	1224	0	1242	13	0
1	B	1220	0	1239	17	0
1	C	1224	0	1242	26	0
1	D	1298	0	1299	50	0
2	A	5	0	0	0	0
2	B	5	0	0	0	0
2	C	5	0	0	0	0
2	D	5	0	0	0	0
3	A	1	0	0	0	0
3	B	1	0	0	0	0
3	C	1	0	0	0	0
3	D	1	0	0	0	0
4	A	1	0	0	0	0
4	B	1	0	0	0	0
4	C	1	0	0	0	0
4	D	1	0	0	0	0
5	A	1	0	0	0	0
5	C	1	0	0	0	0
5	D	1	0	0	1	0
6	A	28	0	12	0	0
6	B	28	0	12	0	0
6	C	28	0	12	0	0
6	D	28	0	12	1	0
7	A	148	0	0	1	0
7	B	117	0	0	0	0
7	C	181	0	0	2	0
7	D	139	0	0	5	0
All	All	5694	0	5070	102	0

The all-atom clashscore is defined as the number of clashes found per 1000 atoms (including hydrogen atoms). The all-atom clashscore for this structure is 10.

All (102) close contacts within the same asymmetric unit are listed below, sorted by their clash magnitude.

Atom-1	Atom-2	Interatomic distance (Å)	Clash overlap (Å)
1:D:352:HIS:HB2	7:D:717:HOH:O	1.49	1.08
1:D:383:GLU:OE1	1:D:383:GLU:HA	1.49	1.06
1:A:234:ASN:HD21	1:A:242:ALA:H	1.15	0.93
1:C:234:ASN:HD21	1:C:242:ALA:H	1.19	0.89
1:D:337:ALA:HA	1:D:340:THR:HG22	1.55	0.88
1:C:335:ASN:HD21	1:C:359:ALA:H	1.22	0.85
1:B:221:ILE:HD11	1:B:268:ILE:HD11	1.60	0.83
1:D:215:HIS:CB	5:D:642:SE:SE	2.76	0.83
1:D:349:VAL:HG22	1:D:350:ASN:H	1.44	0.83
1:B:234:ASN:HD21	1:B:242:ALA:H	1.27	0.82
1:D:335:ASN:HD21	1:D:359:ALA:H	1.30	0.79
1:C:371:HIS:HA	1:C:374:GLN:HG2	1.66	0.78
1:C:256:ARG:HH11	1:D:239:ARG:NH2	1.82	0.77
1:B:232:LEU:HD22	1:B:302:MSE:HE1	1.67	0.77
1:D:324:LEU:HD13	1:D:330:ILE:HD11	1.67	0.76
1:A:299:VAL:HG23	1:A:328:LEU:HD21	1.69	0.74
1:D:317:TRP:HZ3	7:D:676:HOH:O	1.71	0.73
1:D:349:VAL:HG13	1:D:351:GLY:H	1.55	0.71
1:D:303:VAL:HG22	1:D:317:TRP:CH2	2.27	0.69
1:D:217:MSE:HE2	1:D:376:MSE:HG3	1.75	0.69
1:D:317:TRP:CD1	1:D:321:ILE:HD13	2.28	0.68
1:B:360:ARG:HH11	1:B:360:ARG:HB3	1.57	0.68
1:A:290:TRP:O	1:A:294:GLU:HG3	1.95	0.67
1:D:214:SER:HB3	1:D:376:MSE:HA	1.77	0.66
1:C:256:ARG:HH11	1:D:239:ARG:HH22	1.41	0.66
1:C:256:ARG:NH1	1:D:239:ARG:NH2	2.44	0.65
1:B:308:THR:O	1:B:334:ARG:NH2	2.30	0.65
1:D:239:ARG:NH2	7:D:703:HOH:O	2.30	0.64
1:C:217:MSE:HE2	1:C:297:ASP:HB3	1.80	0.64
1:D:349:VAL:HG22	1:D:350:ASN:N	2.14	0.63
1:D:337:ALA:HA	1:D:340:THR:CG2	2.27	0.62
1:A:312:ASP:O	1:A:315:GLU:HG3	2.01	0.61
1:A:312:ASP:HB3	1:A:315:GLU:HG2	1.83	0.61
1:C:239:ARG:HD3	7:C:676:HOH:O	2.00	0.61
1:D:240:GLU:HG3	7:D:704:HOH:O	2.01	0.60
1:B:258:HIS:CE1	1:B:267:HIS:CD2	2.89	0.60
1:C:313:PRO:HD3	1:C:332:VAL:HG21	1.85	0.59
1:C:335:ASN:ND2	1:C:359:ALA:H	1.98	0.59
1:A:266:LEU:HD11	1:A:376:MSE:HE1	1.86	0.58
1:A:299:VAL:CG2	1:A:328:LEU:HD21	2.35	0.57
1:D:313:PRO:HB2	1:D:321:ILE:HD11	1.87	0.57
1:B:221:ILE:CD1	1:B:268:ILE:HD11	2.32	0.57

*Continued on next page...*

*Continued from previous page...*

Atom-1	Atom-2	Interatomic distance (Å)	Clash overlap (Å)
1:D:351:GLY:O	1:D:352:HIS:HB3	2.04	0.57
1:B:232:LEU:HD22	1:B:302:MSE:CE	2.33	0.56
1:D:340:THR:HG23	1:D:342:GLU:H	1.70	0.56
1:C:317:TRP:CD1	1:C:319:GLU:HG2	2.41	0.55
1:B:372:LEU:O	1:B:376:MSE:HG2	2.06	0.55
1:D:288:ARG:HD3	7:D:698:HOH:O	2.06	0.55
1:D:352:HIS:CD2	1:D:353:ALA:O	2.60	0.55
1:C:319:GLU:H	1:C:319:GLU:CD	2.08	0.54
1:B:219:VAL:HG12	1:B:266:LEU:HD13	1.89	0.53
1:A:330:ILE:HG23	1:A:352:HIS:CD2	2.44	0.52
1:D:317:TRP:HD1	1:D:321:ILE:HD13	1.71	0.52
1:C:369:ARG:HD3	7:C:687:HOH:O	2.09	0.52
1:D:239:ARG:HH11	1:D:239:ARG:HG2	1.74	0.52
1:D:291:GLN:O	1:D:294:GLU:HG2	2.09	0.52
1:D:335:ASN:ND2	1:D:359:ALA:H	2.03	0.52
1:B:233:LEU:HD12	1:B:268:ILE:HD12	1.91	0.52
1:B:366:ASP:OD1	1:B:366:ASP:N	2.41	0.51
1:C:371:HIS:HD2	1:C:374:GLN:OE1	1.95	0.50
1:C:337:ALA:HB3	1:C:344:LEU:HD21	1.94	0.50
1:D:352:HIS:HD2	1:D:353:ALA:O	1.94	0.50
1:D:383:GLU:OE1	1:D:383:GLU:CA	2.37	0.50
1:A:366:ASP:HB2	7:A:785:HOH:O	2.12	0.50
1:A:313:PRO:HB2	1:A:321:ILE:HG13	1.93	0.49
1:D:332:VAL:HG23	1:D:352:HIS:CE1	2.47	0.49
1:D:301:PHE:HB3	1:D:317:TRP:CZ2	2.47	0.49
1:D:294:GLU:HG3	1:D:295:GLN:HG3	1.94	0.49
1:C:375:SER:CB	1:C:376:MSE:HG3	2.42	0.49
1:D:303:VAL:CG2	1:D:317:TRP:CH2	2.95	0.48
1:C:331:THR:OG1	1:C:371:HIS:HE1	1.97	0.48
1:D:349:VAL:CG2	1:D:350:ASN:H	2.21	0.48
1:C:256:ARG:NH1	1:D:239:ARG:HH22	2.04	0.47
1:C:234:ASN:ND2	1:C:242:ALA:H	2.01	0.47
1:C:264:MSE:HE3	1:C:266:LEU:HG	1.96	0.46
1:D:214:SER:HB2	1:D:376:MSE:O	2.14	0.46
1:B:360:ARG:HH11	1:B:360:ARG:CB	2.28	0.46
1:D:332:VAL:HG23	1:D:352:HIS:NE2	2.32	0.45
1:B:342:GLU:OE2	1:B:356:ARG:NH2	2.50	0.44
1:C:375:SER:HB3	1:C:376:MSE:HG3	1.97	0.44
1:B:234:ASN:HD21	1:B:242:ALA:N	2.06	0.44
1:D:299:VAL:CG2	1:D:328:LEU:HD21	2.47	0.44
1:D:311:VAL:HG23	1:D:354:LEU:CD1	2.48	0.44

*Continued on next page...*

Continued from previous page...

Atom-1	Atom-2	Interatomic distance (Å)	Clash overlap (Å)
1:D:324:LEU:HD13	1:D:330:ILE:CD1	2.45	0.43
1:D:258:HIS:HE1	1:D:265:PRO:HB2	1.82	0.43
1:C:371:HIS:HA	1:C:374:GLN:CG	2.41	0.43
1:D:348:GLU:O	1:D:349:VAL:HB	2.18	0.42
1:C:371:HIS:O	1:C:374:GLN:HG3	2.19	0.42
1:D:301:PHE:HB3	1:D:317:TRP:HZ2	1.84	0.42
1:D:336:LYS:HG2	6:D:653:GDP:C6	2.55	0.42
1:D:214:SER:CB	1:D:376:MSE:HA	2.49	0.41
1:A:218:LYS:HE3	1:A:218:LYS:HB3	1.60	0.41
1:A:225:PRO:HG2	1:A:275:ARG:HD3	2.03	0.41
1:C:337:ALA:CB	1:C:344:LEU:HD21	2.50	0.41
1:A:266:LEU:CD1	1:A:376:MSE:HE1	2.51	0.41
1:B:258:HIS:HE1	1:B:267:HIS:CD2	2.37	0.41
1:B:262:ASP:HB2	1:B:373:LYS:HD2	2.03	0.41
1:C:344:LEU:HD22	1:C:357:LEU:HA	2.03	0.40
1:D:373:LYS:HE3	1:D:373:LYS:HB3	1.92	0.40
1:C:325:PRO:HB2	1:C:327:LYS:HE3	2.04	0.40
1:D:302:MSE:HE3	1:D:302:MSE:HB3	1.98	0.40
1:D:321:ILE:HA	1:D:324:LEU:HD12	2.02	0.40

There are no symmetry-related clashes.

## 5.3 Torsion angles [i](#)

### 5.3.1 Protein backbone [i](#)

In the following table, the Percentiles column shows the percent Ramachandran outliers of the chain as a percentile score with respect to all X-ray entries followed by that with respect to entries of similar resolution.

The Analysed column shows the number of residues for which the backbone conformation was analysed, and the total number of residues.

Mol	Chain	Analysed	Favoured	Allowed	Outliers	Percentiles	
1	A	159/172 (92%)	157 (99%)	2 (1%)	0	100	100
1	B	158/172 (92%)	153 (97%)	5 (3%)	0	100	100
1	C	159/172 (92%)	156 (98%)	3 (2%)	0	100	100
1	D	170/172 (99%)	163 (96%)	4 (2%)	3 (2%)	7	1
All	All	646/688 (94%)	629 (97%)	14 (2%)	3 (0%)	25	12

All (3) Ramachandran outliers are listed below:

Mol	Chain	Res	Type
1	D	349	VAL
1	D	383	GLU
1	D	352	HIS

### 5.3.2 Protein sidechains [i](#)

In the following table, the Percentiles column shows the percent sidechain outliers of the chain as a percentile score with respect to all X-ray entries followed by that with respect to entries of similar resolution.

The Analysed column shows the number of residues for which the sidechain conformation was analysed, and the total number of residues.

Mol	Chain	Analysed	Rotameric	Outliers	Percentiles
1	A	129/131 (98%)	126 (98%)	3 (2%)	45 29
1	B	129/131 (98%)	125 (97%)	4 (3%)	35 18
1	C	129/131 (98%)	124 (96%)	5 (4%)	27 11
1	D	136/131 (104%)	119 (88%)	17 (12%)	3 1
All	All	523/524 (100%)	494 (94%)	29 (6%)	18 6

All (29) residues with a non-rotameric sidechain are listed below:

Mol	Chain	Res	Type
1	A	252	ARG
1	A	276	GLU
1	A	330	ILE
1	B	255	LEU
1	B	268	ILE
1	B	360	ARG
1	B	366	ASP
1	C	232	LEU
1	C	252	ARG
1	C	311	VAL
1	C	327	LYS
1	C	373	LYS
1	D	236	LEU
1	D	239	ARG
1	D	240	GLU
1	D	252	ARG
1	D	288	ARG

*Continued on next page...*

*Continued from previous page...*

Mol	Chain	Res	Type
1	D	301	PHE
1	D	308	THR
1	D	311	VAL
1	D	317	TRP
1	D	321	ILE
1	D	323	ARG
1	D	339	ILE
1	D	347	SER
1	D	354	LEU
1	D	366	ASP
1	D	373	LYS
1	D	383	GLU

Sometimes sidechains can be flipped to improve hydrogen bonding and reduce clashes. All (20) such sidechains are listed below:

Mol	Chain	Res	Type
1	A	234	ASN
1	A	258	HIS
1	A	352	HIS
1	A	370	ASN
1	B	234	ASN
1	B	258	HIS
1	B	267	HIS
1	B	350	ASN
1	C	234	ASN
1	C	291	GLN
1	C	335	ASN
1	C	370	ASN
1	C	371	HIS
1	C	374	GLN
1	D	258	HIS
1	D	335	ASN
1	D	350	ASN
1	D	352	HIS
1	D	370	ASN
1	D	374	GLN

### 5.3.3 RNA ⓘ

There are no RNA molecules in this entry.

## 5.4 Non-standard residues in protein, DNA, RNA chains [i](#)

There are no non-standard protein/DNA/RNA residues in this entry.

## 5.5 Carbohydrates [i](#)

There are no oligosaccharides in this entry.

## 5.6 Ligand geometry [i](#)

Of 19 ligands modelled in this entry, 11 are monoatomic - leaving 8 for Mogul analysis.

In the following table, the Counts columns list the number of bonds (or angles) for which Mogul statistics could be retrieved, the number of bonds (or angles) that are observed in the model and the number of bonds (or angles) that are defined in the Chemical Component Dictionary. The Link column lists molecule types, if any, to which the group is linked. The Z score for a bond length (or angle) is the number of standard deviations the observed value is removed from the expected value. A bond length (or angle) with  $|Z| > 2$  is considered an outlier worth inspection. RMSZ is the root-mean-square of all Z scores of the bond lengths (or angles).

Mol	Type	Chain	Res	Link	Bond lengths			Bond angles		
					Counts	RMSZ	# Z  > 2	Counts	RMSZ	# Z  > 2
6	GDP	A	650	2,3,4	25,30,30	1.05	1 (4%)	30,47,47	1.15	2 (6%)
2	ALF	D	631	7,6,3,4	4,4,4	1.37	0	-		
6	GDP	C	652	2,3,4	25,30,30	1.13	1 (4%)	30,47,47	1.36	3 (10%)
2	ALF	B	611	7,6,3,4	4,4,4	1.31	0	-		
2	ALF	C	621	7,6,3,4	4,4,4	1.38	0	-		
6	GDP	B	651	2,3,4	25,30,30	1.24	2 (8%)	30,47,47	1.37	4 (13%)
2	ALF	A	601	7,6,3,4	4,4,4	1.45	0	-		
6	GDP	D	653	2,3,4	25,30,30	0.96	0	30,47,47	1.42	3 (10%)

In the following table, the Chirals column lists the number of chiral outliers, the number of chiral centers analysed, the number of these observed in the model and the number defined in the Chemical Component Dictionary. Similar counts are reported in the Torsion and Rings columns. '-' means no outliers of that kind were identified.

Mol	Type	Chain	Res	Link	Chirals	Torsions	Rings
6	GDP	C	652	2,3,4	-	0/12/32/32	0/3/3/3
6	GDP	A	650	2,3,4	-	0/12/32/32	0/3/3/3
6	GDP	B	651	2,3,4	-	1/12/32/32	0/3/3/3
6	GDP	D	653	2,3,4	-	2/12/32/32	0/3/3/3

All (4) bond length outliers are listed below:



Mol	Chain	Res	Type	Atoms	Z	Observed(Å)	Ideal(Å)
6	B	651	GDP	PA-O3A	3.63	1.63	1.59
6	C	652	GDP	PA-O3A	3.43	1.63	1.59
6	B	651	GDP	C6-N1	-2.83	1.33	1.37
6	A	650	GDP	C6-N1	-2.41	1.34	1.37

All (12) bond angle outliers are listed below:

Mol	Chain	Res	Type	Atoms	Z	Observed(°)	Ideal(°)
6	C	652	GDP	C8-N7-C5	3.98	109.33	102.55
6	D	653	GDP	O6-C6-N1	3.35	124.59	120.62
6	D	653	GDP	O6-C6-C5	-3.22	117.93	124.32
6	C	652	GDP	C5-C6-N1	2.72	119.26	114.07
6	B	651	GDP	O6-C6-C5	-2.61	119.14	124.32
6	B	651	GDP	O3B-PB-O3A	2.55	113.19	104.64
6	D	653	GDP	C8-N7-C5	2.54	106.87	102.55
6	A	650	GDP	C8-N7-C5	2.39	106.61	102.55
6	A	650	GDP	O6-C6-C5	-2.23	119.91	124.32
6	B	651	GDP	C8-N7-C5	2.20	106.30	102.55
6	B	651	GDP	O6-C6-N1	2.09	123.10	120.62
6	C	652	GDP	C2-N1-C6	-2.07	121.33	125.11

There are no chirality outliers.

All (3) torsion outliers are listed below:

Mol	Chain	Res	Type	Atoms
6	B	651	GDP	PA-O3A-PB-O1B
6	D	653	GDP	PA-O3A-PB-O1B
6	D	653	GDP	PA-O3A-PB-O3B

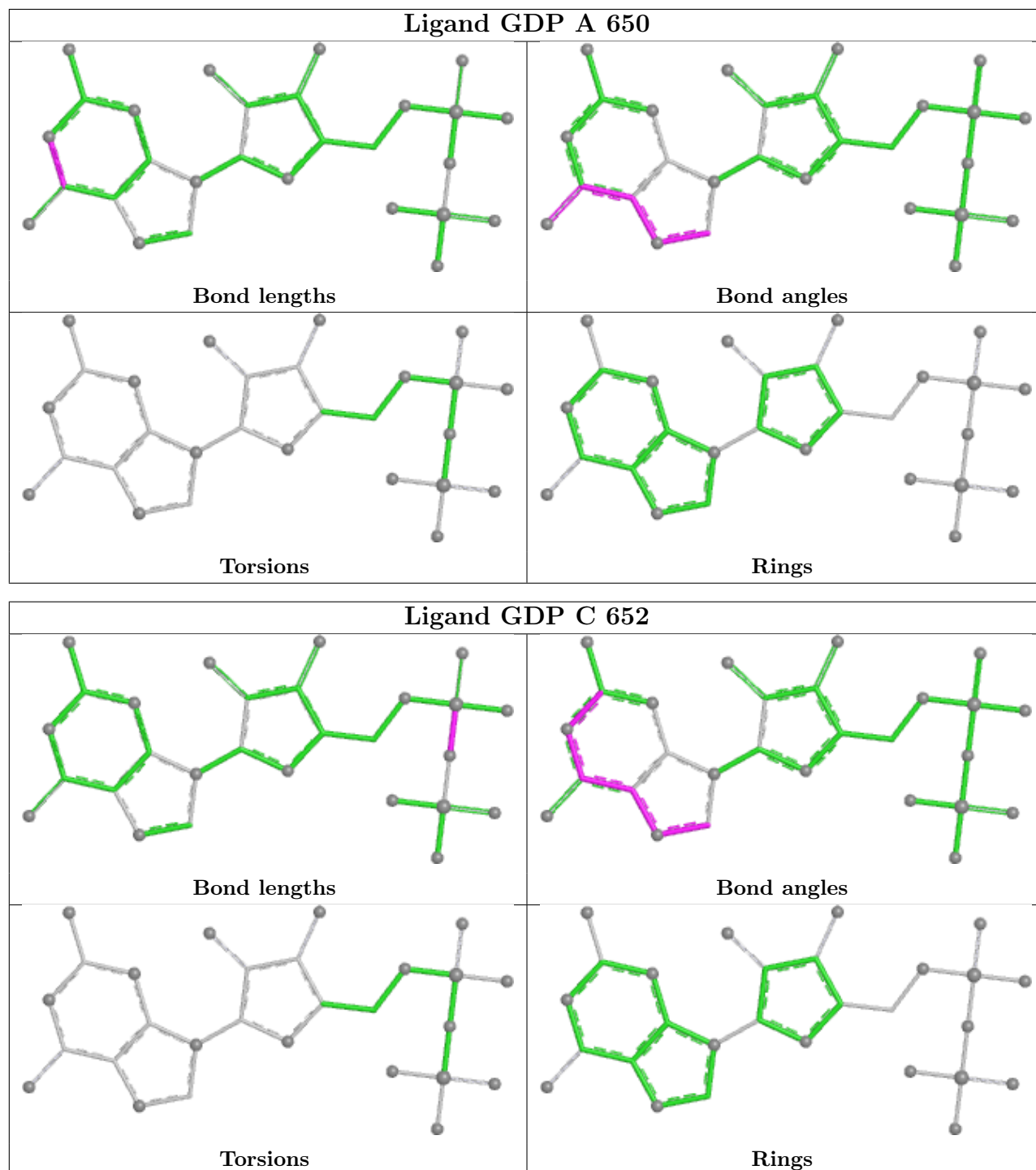
There are no ring outliers.

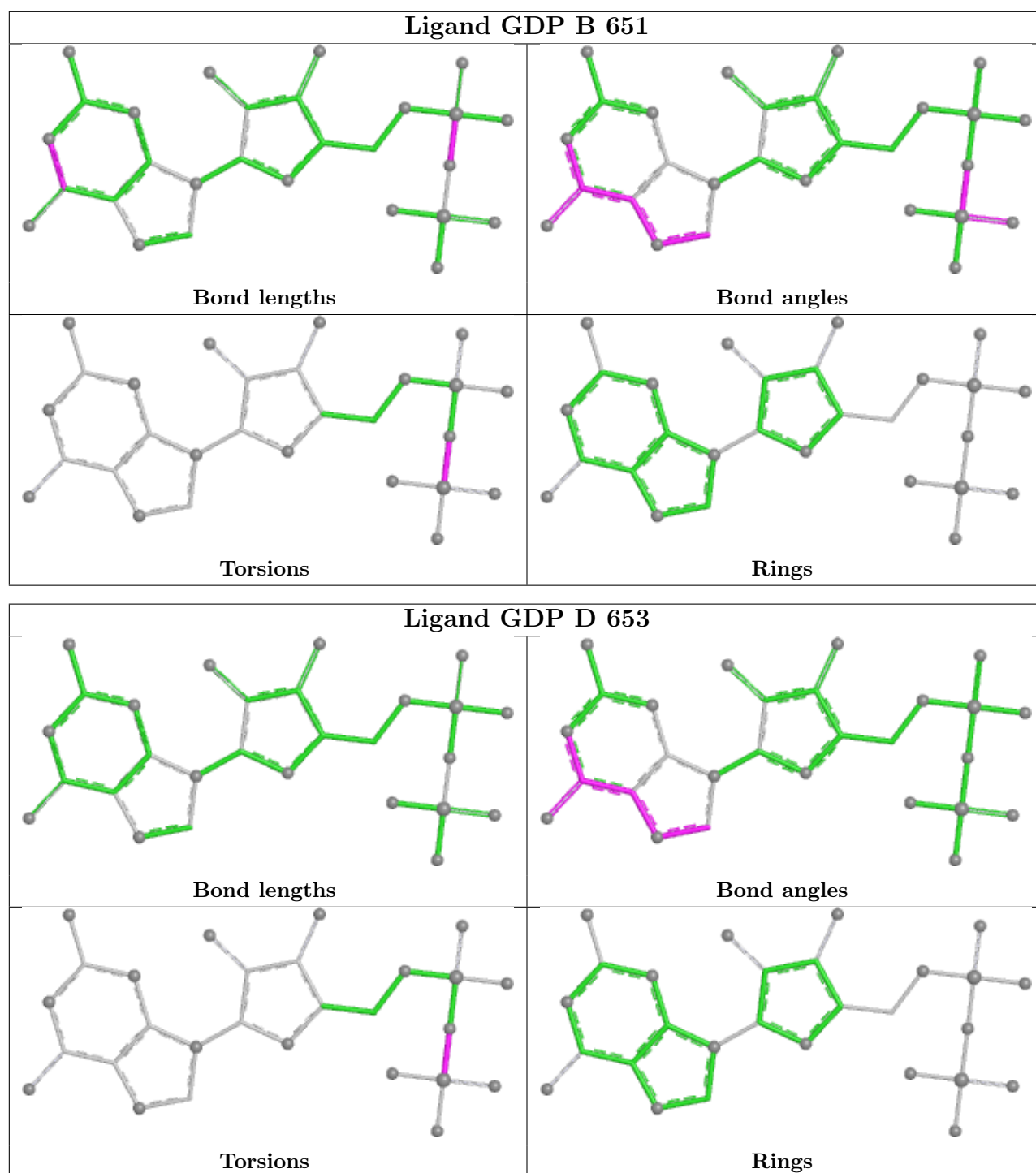
1 monomer is involved in 1 short contact:

Mol	Chain	Res	Type	Clashes	Symm-Clashes
6	D	653	GDP	1	0

The following is a two-dimensional graphical depiction of Mogul quality analysis of bond lengths, bond angles, torsion angles, and ring geometry for all instances of the Ligand of Interest. In addition, ligands with molecular weight > 250 and outliers as shown on the validation Tables will also be included. For torsion angles, if less than 5% of the Mogul distribution of torsion angles is within 10 degrees of the torsion angle in question, then that torsion angle is considered an outlier. Any bond that is central to one or more torsion angles identified as an outlier by Mogul will be highlighted in the graph. For rings, the root-mean-square deviation (RMSD) between the ring

in question and similar rings identified by Mogul is calculated over all ring torsion angles. If the average RMSD is greater than 60 degrees and the minimal RMSD between the ring in question and any Mogul-identified rings is also greater than 60 degrees, then that ring is considered an outlier. The outliers are highlighted in purple. The color gray indicates Mogul did not find sufficient equivalents in the CSD to analyse the geometry.





## 5.7 Other polymers [i](#)

There are no such residues in this entry.

## 5.8 Polymer linkage issues [i](#)

There are no chain breaks in this entry.

## 6 Fit of model and data

### 6.1 Protein, DNA and RNA chains

In the following table, the column labelled ‘#RSRZ > 2’ contains the number (and percentage) of RSRZ outliers, followed by percent RSRZ outliers for the chain as percentile scores relative to all X-ray entries and entries of similar resolution. The OWAB column contains the minimum, median, 95<sup>th</sup> percentile and maximum values of the occupancy-weighted average B-factor per residue. The column labelled ‘Q < 0.9’ lists the number of (and percentage) of residues with an average occupancy less than 0.9.

Mol	Chain	Analysed	<RSRZ>	#RSRZ>2	OWAB(Å <sup>2</sup> )	Q<0.9
1	A	156/172 (90%)	0.07	7 (4%) 39 41	9, 18, 30, 37	0
1	B	155/172 (90%)	0.45	9 (5%) 30 31	9, 21, 34, 39	0
1	C	156/172 (90%)	-0.13	4 (2%) 57 60	9, 15, 24, 28	0
1	D	166/172 (96%)	0.78	32 (19%) 4 3	12, 22, 47, 50	0
All	All	633/688 (92%)	0.30	52 (8%) 19 19	9, 19, 35, 50	0

All (52) RSRZ outliers are listed below:

Mol	Chain	Res	Type	RSRZ
1	D	317	TRP	5.6
1	A	309	ASP	4.5
1	D	352	HIS	4.5
1	D	320	PHE	3.7
1	D	308	THR	3.5
1	D	310	ALA	3.4
1	D	349	VAL	3.3
1	B	327	LYS	3.2
1	B	262	ASP	3.2
1	D	350	ASN	3.2
1	D	340	THR	2.9
1	D	213	GLY	2.9
1	C	216	GLY	2.8
1	D	383	GLU	2.8
1	D	314	ALA	2.8
1	D	322	ALA	2.8
1	D	326	ALA	2.8
1	C	374	GLN	2.8
1	D	239	ARG	2.7
1	D	258	HIS	2.7
1	D	316	ILE	2.7

*Continued on next page...*

*Continued from previous page...*

Mol	Chain	Res	Type	RSRZ
1	D	301	PHE	2.7
1	D	339	ILE	2.6
1	B	359	ALA	2.6
1	D	341	GLY	2.6
1	B	261	ILE	2.6
1	D	311	VAL	2.6
1	B	266	LEU	2.6
1	B	361	THR	2.5
1	D	321	ILE	2.4
1	D	374	GLN	2.4
1	D	309	ASP	2.4
1	C	317	TRP	2.4
1	D	384	GLY	2.4
1	A	263	GLY	2.3
1	A	262	ASP	2.2
1	A	276	GLU	2.2
1	A	287	GLU	2.2
1	C	315	GLU	2.2
1	D	324	LEU	2.2
1	D	294	GLU	2.2
1	D	325	PRO	2.2
1	B	258	HIS	2.2
1	B	339	ILE	2.1
1	B	340	THR	2.1
1	A	216	GLY	2.1
1	D	318	PRO	2.1
1	D	351	GLY	2.0
1	D	323	ARG	2.0
1	A	327	LYS	2.0
1	D	305	GLY	2.0
1	D	370	ASN	2.0

## 6.2 Non-standard residues in protein, DNA, RNA chains [i](#)

There are no non-standard protein/DNA/RNA residues in this entry.

## 6.3 Carbohydrates [i](#)

There are no monosaccharides in this entry.

## 6.4 Ligands

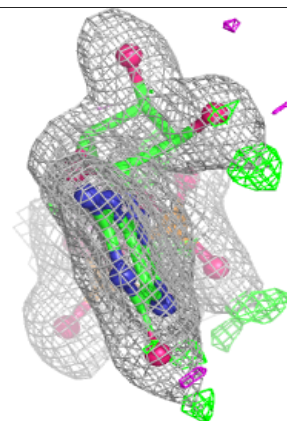
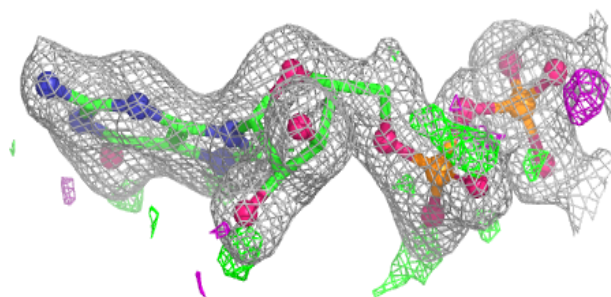
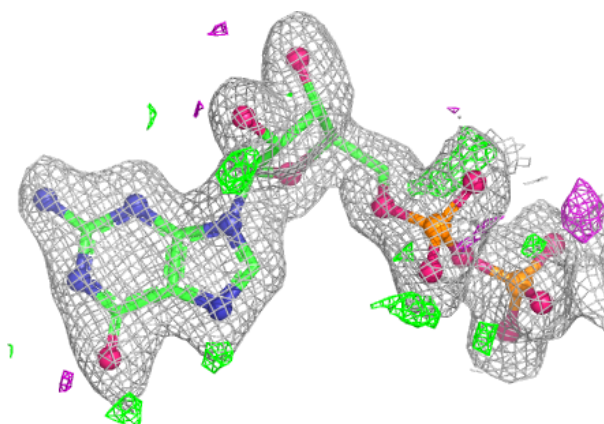
In the following table, the Atoms column lists the number of modelled atoms in the group and the number defined in the chemical component dictionary. The B-factors column lists the minimum, median, 95<sup>th</sup> percentile and maximum values of B factors of atoms in the group. The column labelled 'Q<0.9' lists the number of atoms with occupancy less than 0.9.

Mol	Type	Chain	Res	Atoms	RSCC	RSR	B-factors(Å <sup>2</sup> )	Q<0.9
5	SE	A	641	1/1	0.94	0.13	73,73,73,73	0
6	GDP	B	651	28/28	0.95	0.09	13,20,24,24	0
3	MG	B	612	1/1	0.96	0.04	17,17,17,17	0
2	ALF	B	611	5/5	0.97	0.05	14,15,16,17	0
4	K	B	613	1/1	0.97	0.04	16,16,16,16	0
2	ALF	C	621	5/5	0.98	0.04	10,10,11,12	0
5	SE	C	643	1/1	0.98	0.07	19,19,19,19	1
5	SE	D	642	1/1	0.98	0.07	29,29,29,29	0
6	GDP	A	650	28/28	0.98	0.05	6,10,13,14	0
3	MG	A	602	1/1	0.98	0.03	11,11,11,11	0
6	GDP	C	652	28/28	0.98	0.04	9,11,14,15	0
6	GDP	D	653	28/28	0.98	0.06	11,17,21,22	0
3	MG	C	622	1/1	0.99	0.02	9,9,9,9	0
4	K	A	603	1/1	0.99	0.01	10,10,10,10	0
2	ALF	A	601	5/5	0.99	0.03	10,12,13,13	0
4	K	C	623	1/1	0.99	0.02	11,11,11,11	0
4	K	D	633	1/1	0.99	0.02	13,13,13,13	0
2	ALF	D	631	5/5	0.99	0.03	12,13,13,13	0
3	MG	D	632	1/1	1.00	0.02	13,13,13,13	0

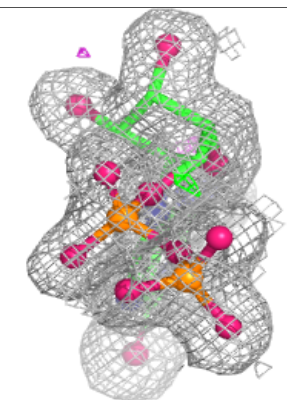
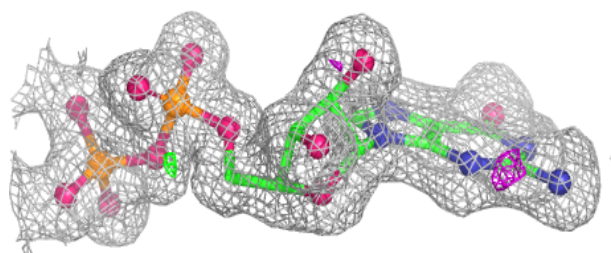
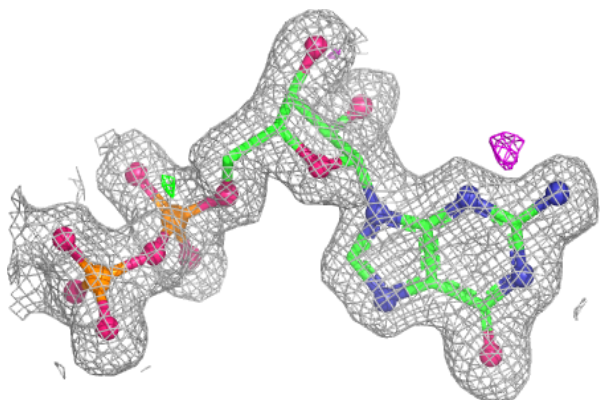
The following is a graphical depiction of the model fit to experimental electron density of all instances of the Ligand of Interest. In addition, ligands with molecular weight > 250 and outliers as shown on the geometry validation Tables will also be included. Each fit is shown from different orientation to approximate a three-dimensional view.

**Electron density around GDP B 651:**

$2mF_o-DF_c$  (at 0.7 rmsd) in gray  
 $mF_o-DF_c$  (at 3 rmsd) in purple (negative)  
and green (positive)

**Electron density around GDP A 650:**

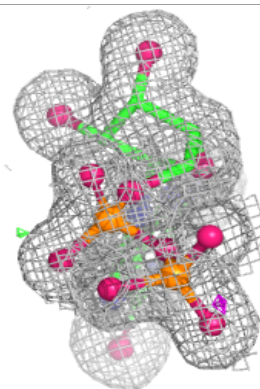
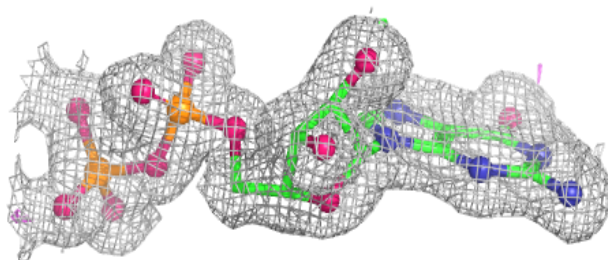
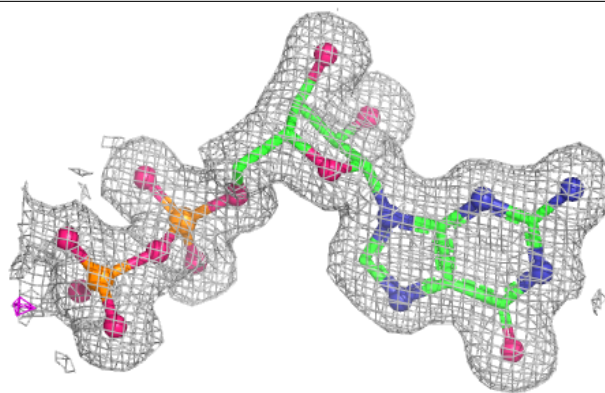
$2mF_o-DF_c$  (at 0.7 rmsd) in gray  
 $mF_o-DF_c$  (at 3 rmsd) in purple (negative)  
and green (positive)



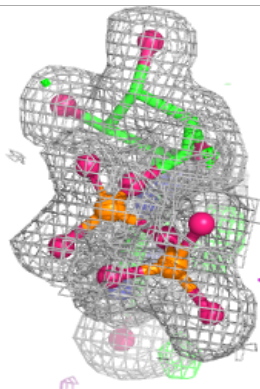
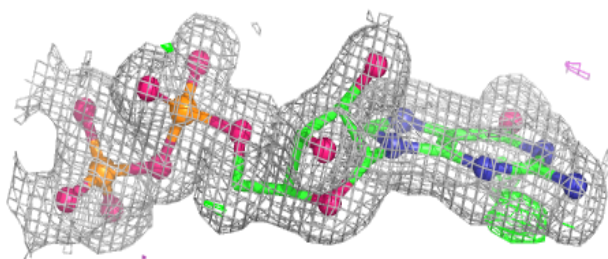
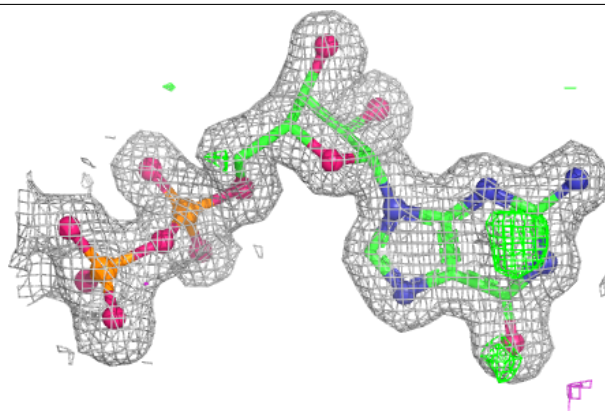


**Electron density around GDP C 652:**

$2mF_o-DF_c$  (at 0.7 rmsd) in gray  
 $mF_o-DF_c$  (at 3 rmsd) in purple (negative)  
and green (positive)

**Electron density around GDP D 653:**

$2mF_o-DF_c$  (at 0.7 rmsd) in gray  
 $mF_o-DF_c$  (at 3 rmsd) in purple (negative)  
and green (positive)





## 6.5 Other polymers [i](#)

There are no such residues in this entry.