



wwPDB X-ray Structure Validation Summary Report ⓘ

Jun 16, 2024 – 10:47 AM EDT

PDB ID : 2GNN
Title : Crystal Structure of the Orf Virus NZ2 Variant of VEGF-E
Authors : Prota, A.E.; Pieren, M.; Wagner, A.; Kostrewa, D.; Winkler, F.K.; Ballmer-Hofer, K.
Deposited on : 2006-04-10
Resolution : 2.30 Å(reported)

This is a wwPDB X-ray Structure Validation Summary Report for a publicly released PDB entry.

We welcome your comments at validation@mail.wwpdb.org

A user guide is available at

<https://www.wwpdb.org/validation/2017/XrayValidationReportHelp>

with specific help available everywhere you see the ⓘ symbol.

The types of validation reports are described at

<http://www.wwpdb.org/validation/2017/FAQs#types>.

The following versions of software and data (see [references ⓘ](#)) were used in the production of this report:

MolProbity : 4.02b-467
Mogul : 2022.3.0, CSD as543be (2022)
Xtriage (Phenix) : 1.20.1
EDS : 2.37.1
Percentile statistics : 20191225.v01 (using entries in the PDB archive December 25th 2019)
Refmac : 5.8.0158
CCP4 : 7.0.044 (Gargrove)
Ideal geometry (proteins) : Engh & Huber (2001)
Ideal geometry (DNA, RNA) : Parkinson et al. (1996)
Validation Pipeline (wwPDB-VP) : 2.37.1

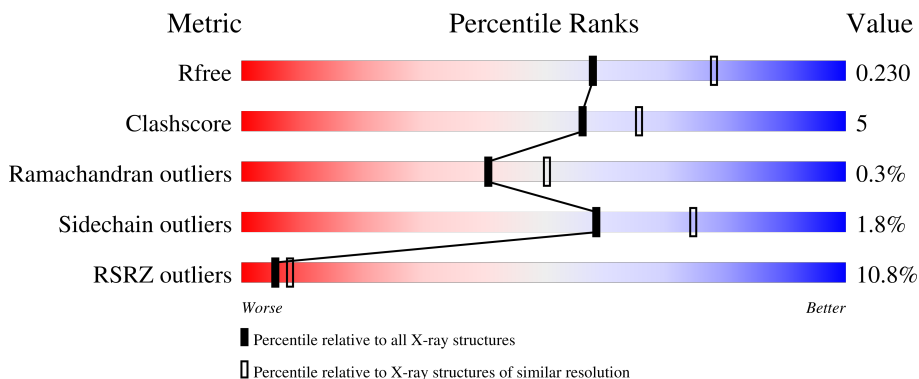
1 Overall quality at a glance

The following experimental techniques were used to determine the structure:

X-RAY DIFFRACTION

The reported resolution of this entry is 2.30 Å.

Percentile scores (ranging between 0-100) for global validation metrics of the entry are shown in the following graphic. The table shows the number of entries on which the scores are based.



Metric	Whole archive (#Entries)	Similar resolution (#Entries, resolution range(Å))
R_{free}	130704	5042 (2.30-2.30)
Clashscore	141614	5643 (2.30-2.30)
Ramachandran outliers	138981	5575 (2.30-2.30)
Sidechain outliers	138945	5575 (2.30-2.30)
RSRZ outliers	127900	4938 (2.30-2.30)

The table below summarises the geometric issues observed across the polymeric chains and their fit to the electron density. The red, orange, yellow and green segments of the lower bar indicate the fraction of residues that contain outliers for ≥ 3 , 2, 1 and 0 types of geometric quality criteria respectively. A grey segment represents the fraction of residues that are not modelled. The numeric value for each fraction is indicated below the corresponding segment, with a dot representing fractions $\leq 5\%$. The upper red bar (where present) indicates the fraction of residues that have poor fit to the electron density. The numeric value is given above the bar.

Mol	Chain	Length	Quality of chain
1	A	127	 9% 64% 9% 28%
1	B	127	 66% 8% 25%
1	C	127	 13% 65% 6% 29%
1	D	127	 9% 62% 10% 27%

2 Entry composition

There are 8 unique types of molecules in this entry. The entry contains 3144 atoms, of which 0 are hydrogens and 0 are deuteriums.

In the tables below, the ZeroOcc column contains the number of atoms modelled with zero occupancy, the AltConf column contains the number of residues with at least one atom in alternate conformation and the Trace column contains the number of residues modelled with at most 2 atoms.

- Molecule 1 is a protein called Vascular endothelial growth factor homolog.

Mol	Chain	Residues	Atoms					ZeroOcc	AltConf	Trace
			Total	C	N	O	S			
1	A	92	716	439	126	140	11	0	1	0
1	B	95	719	437	130	141	11	0	0	0
1	C	90	700	429	124	136	11	0	0	0
1	D	93	700	427	124	138	11	0	0	0

There are 60 discrepancies between the modelled and reference sequences:

Chain	Residue	Modelled	Actual	Comment	Reference
A	5	GLU	-	cloning artifact	UNP P52584
A	6	ALA	-	cloning artifact	UNP P52584
A	7	GLU	-	cloning artifact	UNP P52584
A	8	ALA	-	cloning artifact	UNP P52584
A	9	GLU	-	cloning artifact	UNP P52584
A	10	PHE	-	cloning artifact	UNP P52584
A	77	THR	SER	SEE REMARK 999	UNP P52584
A	124	VAL	-	cloning artifact	UNP P52584
A	125	ASP	-	cloning artifact	UNP P52584
A	126	HIS	-	expression tag	UNP P52584
A	127	HIS	-	expression tag	UNP P52584
A	128	HIS	-	expression tag	UNP P52584
A	129	HIS	-	expression tag	UNP P52584
A	130	HIS	-	expression tag	UNP P52584
A	131	HIS	-	expression tag	UNP P52584
B	5	GLU	-	cloning artifact	UNP P52584
B	6	ALA	-	cloning artifact	UNP P52584
B	7	GLU	-	cloning artifact	UNP P52584
B	8	ALA	-	cloning artifact	UNP P52584
B	9	GLU	-	cloning artifact	UNP P52584
B	10	PHE	-	cloning artifact	UNP P52584

Continued on next page...

Continued from previous page...

Chain	Residue	Modelled	Actual	Comment	Reference
B	77	THR	SER	SEE REMARK 999	UNP P52584
B	124	VAL	-	cloning artifact	UNP P52584
B	125	ASP	-	cloning artifact	UNP P52584
B	126	HIS	-	expression tag	UNP P52584
B	127	HIS	-	expression tag	UNP P52584
B	128	HIS	-	expression tag	UNP P52584
B	129	HIS	-	expression tag	UNP P52584
B	130	HIS	-	expression tag	UNP P52584
B	131	HIS	-	expression tag	UNP P52584
C	5	GLU	-	cloning artifact	UNP P52584
C	6	ALA	-	cloning artifact	UNP P52584
C	7	GLU	-	cloning artifact	UNP P52584
C	8	ALA	-	cloning artifact	UNP P52584
C	9	GLU	-	cloning artifact	UNP P52584
C	10	PHE	-	cloning artifact	UNP P52584
C	77	THR	SER	SEE REMARK 999	UNP P52584
C	124	VAL	-	cloning artifact	UNP P52584
C	125	ASP	-	cloning artifact	UNP P52584
C	126	HIS	-	expression tag	UNP P52584
C	127	HIS	-	expression tag	UNP P52584
C	128	HIS	-	expression tag	UNP P52584
C	129	HIS	-	expression tag	UNP P52584
C	130	HIS	-	expression tag	UNP P52584
C	131	HIS	-	expression tag	UNP P52584
D	5	GLU	-	cloning artifact	UNP P52584
D	6	ALA	-	cloning artifact	UNP P52584
D	7	GLU	-	cloning artifact	UNP P52584
D	8	ALA	-	cloning artifact	UNP P52584
D	9	GLU	-	cloning artifact	UNP P52584
D	10	PHE	-	cloning artifact	UNP P52584
D	77	THR	SER	SEE REMARK 999	UNP P52584
D	124	VAL	-	cloning artifact	UNP P52584
D	125	ASP	-	cloning artifact	UNP P52584
D	126	HIS	-	expression tag	UNP P52584
D	127	HIS	-	expression tag	UNP P52584
D	128	HIS	-	expression tag	UNP P52584
D	129	HIS	-	expression tag	UNP P52584
D	130	HIS	-	expression tag	UNP P52584
D	131	HIS	-	expression tag	UNP P52584

- Molecule 2 is CHLORIDE ION (three-letter code: CL) (formula: Cl).

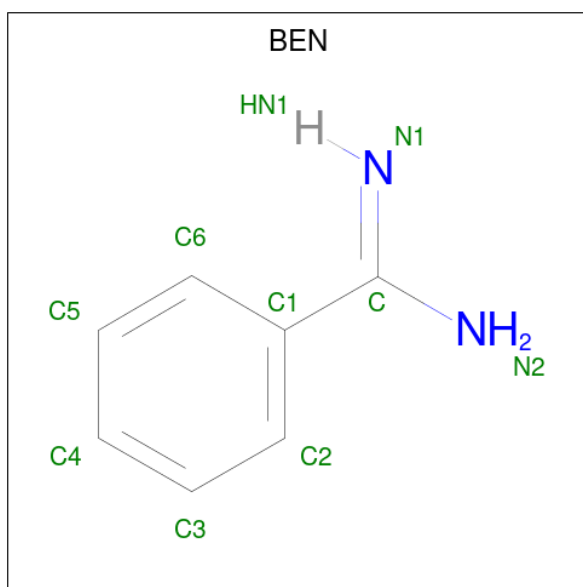
Mol	Chain	Residues	Atoms	ZeroOcc	AltConf
2	A	1	Total Cl 1 1	0	0
2	C	2	Total Cl 2 2	0	0

- Molecule 3 is SULFATE ION (three-letter code: SO4) (formula: O₄S).



Mol	Chain	Residues	Atoms	ZeroOcc	AltConf
3	A	1	Total O S 5 4 1	0	0
3	C	1	Total O S 5 4 1	0	0

- Molecule 4 is BENZAMIDINE (three-letter code: BEN) (formula: C₇H₈N₂).



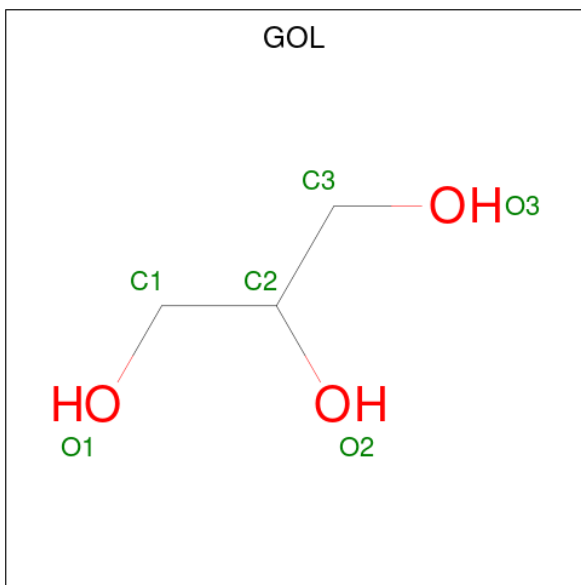
Mol	Chain	Residues	Atoms	ZeroOcc	AltConf
4	A	1	Total C N 9 7 2	0	0
4	B	1	Total C N 9 7 2	0	0
4	D	1	Total C N 9 7 2	0	0

- Molecule 5 is 2-AMINO-2-HYDROXYMETHYL-PROPANE-1,3-DIOL (three-letter code: TRS) (formula: $C_4H_{12}NO_3$).



Mol	Chain	Residues	Atoms				ZeroOcc	AltConf
5	A	1	Total	C	N	O	0	0
			8	4	1	3		
5	C	1	Total	C	N	O	0	0
			8	4	1	3		

- Molecule 6 is GLYCEROL (three-letter code: GOL) (formula: C₃H₈O₃).



Mol	Chain	Residues	Atoms			ZeroOcc	AltConf
6	A	1	Total	C	O	0	0
			6	3	3		
6	A	1	Total	C	O	0	0
			6	3	3		
6	A	1	Total	C	O	0	0
			6	3	3		
6	A	1	Total	C	O	0	0
			6	3	3		
6	B	1	Total	C	O	0	0
			6	3	3		
6	B	1	Total	C	O	0	0
			6	3	3		
6	B	1	Total	C	O	0	0
			6	3	3		
6	C	1	Total	C	O	0	0
			6	3	3		

- Molecule 7 is 2-acetamido-2-deoxy-beta-D-glucopyranose (three-letter code: NAG) (formula: C₈H₁₅NO₆).



Mol	Chain	Residues	Atoms				ZeroOcc	AltConf
			Total	C	N	O		
7	B	1	14	8	1	5	0	0
7	D	1	14	8	1	5	0	0

- Molecule 8 is water.

Mol	Chain	Residues	Atoms		ZeroOcc	AltConf
			Total	O		
8	A	40	40	40	0	0
8	B	47	47	47	0	0
8	C	44	44	44	0	0
8	D	46	46	46	0	0

4 Data and refinement statistics

Property	Value	Source
Space group	P 41 2 2	Depositor
Cell constants a, b, c, α , β , γ	98.60Å 98.60Å 240.00Å 90.00° 90.00° 90.00°	Depositor
Resolution (Å)	48.48 – 2.30 48.29 – 2.30	Depositor EDS
% Data completeness (in resolution range)	98.7 (48.48-2.30) 98.7 (48.29-2.30)	Depositor EDS
R_{merge}	0.08	Depositor
R_{sym}	(Not available)	Depositor
$\langle I/\sigma(I) \rangle$ ¹	2.27 (at 2.29Å)	Xtrriage
Refinement program	REFMAC	Depositor
R, R_{free}	0.223 , 0.247 0.211 , 0.230	Depositor DCC
R_{free} test set	2687 reflections (5.09%)	wwPDB-VP
Wilson B-factor (Å ²)	50.0	Xtrriage
Anisotropy	0.639	Xtrriage
Bulk solvent k_{sol} (e/Å ³), B_{sol} (Å ²)	0.32 , 60.7	EDS
L-test for twinning ²	$\langle L \rangle = 0.49$, $\langle L^2 \rangle = 0.32$	Xtrriage
Estimated twinning fraction	No twinning to report.	Xtrriage
F_o, F_c correlation	0.94	EDS
Total number of atoms	3144	wwPDB-VP
Average B, all atoms (Å ²)	66.0	wwPDB-VP

Xtrriage's analysis on translational NCS is as follows: *The largest off-origin peak in the Patterson function is 4.86% of the height of the origin peak. No significant pseudotranslation is detected.*

¹Intensities estimated from amplitudes.

²Theoretical values of $\langle |L| \rangle$, $\langle L^2 \rangle$ for acentric reflections are 0.5, 0.333 respectively for untwinned datasets, and 0.375, 0.2 for perfectly twinned datasets.

5 Model quality [i](#)

5.1 Standard geometry [i](#)

Bond lengths and bond angles in the following residue types are not validated in this section: GOL, NAG, CL, SO4, TRS, BEN

The Z score for a bond length (or angle) is the number of standard deviations the observed value is removed from the expected value. A bond length (or angle) with $|Z| > 5$ is considered an outlier worth inspection. RMSZ is the root-mean-square of all Z scores of the bond lengths (or angles).

Mol	Chain	Bond lengths		Bond angles	
		RMSZ	# $ Z > 5$	RMSZ	# $ Z > 5$
1	A	0.54	0/734	0.59	0/991
1	B	0.51	0/732	0.59	0/989
1	C	0.69	1/712 (0.1%)	0.57	0/960
1	D	0.47	0/713	0.56	0/964
All	All	0.56	1/2891 (0.0%)	0.58	0/3904

All (1) bond length outliers are listed below:

Mol	Chain	Res	Type	Atoms	Z	Observed(Å)	Ideal(Å)
1	C	82	GLY	C-O	12.52	1.43	1.23

There are no bond angle outliers.

There are no chirality outliers.

There are no planarity outliers.

5.2 Too-close contacts [i](#)

In the following table, the Non-H and H(model) columns list the number of non-hydrogen atoms and hydrogen atoms in the chain respectively. The H(added) column lists the number of hydrogen atoms added and optimized by MolProbity. The Clashes column lists the number of clashes within the asymmetric unit, whereas Symm-Clashes lists symmetry-related clashes.

Mol	Chain	Non-H	H(model)	H(added)	Clashes	Symm-Clashes
1	A	716	0	692	6	0
1	B	719	0	697	13	0
1	C	700	0	675	4	0
1	D	700	0	678	8	0
2	A	1	0	0	0	0
2	C	2	0	0	0	0

Continued on next page...

Continued from previous page...

Mol	Chain	Non-H	H(model)	H(added)	Clashes	Symm-Clashes
3	A	5	0	0	0	0
3	C	5	0	0	0	0
4	A	9	0	7	0	0
4	B	9	0	7	2	0
4	D	9	0	7	0	0
5	A	8	0	12	0	0
5	C	8	0	12	0	0
6	A	24	0	32	2	0
6	B	18	0	24	4	0
6	C	6	0	8	0	0
7	B	14	0	13	0	0
7	D	14	0	13	0	0
8	A	40	0	0	0	0
8	B	47	0	0	1	0
8	C	44	0	0	0	0
8	D	46	0	0	1	0
All	All	3144	0	2877	29	0

The all-atom clashscore is defined as the number of clashes found per 1000 atoms (including hydrogen atoms). The all-atom clashscore for this structure is 5.

The worst 5 of 29 close contacts within the same asymmetric unit are listed below, sorted by their clash magnitude.

Atom-1	Atom-2	Interatomic distance (Å)	Clash overlap (Å)
1:A:66:LEU:HD12	8:D:1031:HOH:O	1.62	0.97
1:B:56:ARG:HG2	1:B:56:ARG:HH11	1.53	0.74
1:B:16:GLY:HA3	6:B:604:GOL:H12	1.80	0.62
1:A:72:GLU:HG2	1:A:100:LYS:HB2	1.82	0.62
1:A:15:LYS:HB2	1:B:78:MET:HG2	1.83	0.60

There are no symmetry-related clashes.

5.3 Torsion angles [i](#)

5.3.1 Protein backbone [i](#)

In the following table, the Percentiles column shows the percent Ramachandran outliers of the chain as a percentile score with respect to all X-ray entries followed by that with respect to entries of similar resolution.

The Analysed column shows the number of residues for which the backbone conformation was analysed, and the total number of residues.

Mol	Chain	Analysed	Favoured	Allowed	Outliers	Percentiles	
1	A	89/127 (70%)	86 (97%)	3 (3%)	0	100	100
1	B	93/127 (73%)	92 (99%)	1 (1%)	0	100	100
1	C	84/127 (66%)	81 (96%)	3 (4%)	0	100	100
1	D	91/127 (72%)	89 (98%)	1 (1%)	1 (1%)	14	15
All	All	357/508 (70%)	348 (98%)	8 (2%)	1 (0%)	41	50

All (1) Ramachandran outliers are listed below:

Mol	Chain	Res	Type
1	D	72	GLU

5.3.2 Protein sidechains [i](#)

In the following table, the Percentiles column shows the percent sidechain outliers of the chain as a percentile score with respect to all X-ray entries followed by that with respect to entries of similar resolution.

The Analysed column shows the number of residues for which the sidechain conformation was analysed, and the total number of residues.

Mol	Chain	Analysed	Rotameric	Outliers	Percentiles	
1	A	87/116 (75%)	85 (98%)	2 (2%)	50	67
1	B	86/116 (74%)	85 (99%)	1 (1%)	71	84
1	C	85/116 (73%)	83 (98%)	2 (2%)	49	66
1	D	84/116 (72%)	83 (99%)	1 (1%)	71	84
All	All	342/464 (74%)	336 (98%)	6 (2%)	59	75

5 of 6 residues with a non-rotameric sidechain are listed below:

Mol	Chain	Res	Type
1	C	45	GLN
1	C	62	ASN
1	D	105	ARG
1	A	62	ASN
1	A	31	ILE

Sometimes sidechains can be flipped to improve hydrogen bonding and reduce clashes. All (3) such

sidechains are listed below:

Mol	Chain	Res	Type
1	A	92	GLN
1	C	45	GLN
1	D	39	HIS

5.3.3 RNA [i](#)

There are no RNA molecules in this entry.

5.4 Non-standard residues in protein, DNA, RNA chains [i](#)

There are no non-standard protein/DNA/RNA residues in this entry.

5.5 Carbohydrates [i](#)

There are no monosaccharides in this entry.

5.6 Ligand geometry [i](#)

Of 20 ligands modelled in this entry, 3 are monoatomic - leaving 17 for Mogul analysis.

In the following table, the Counts columns list the number of bonds (or angles) for which Mogul statistics could be retrieved, the number of bonds (or angles) that are observed in the model and the number of bonds (or angles) that are defined in the Chemical Component Dictionary. The Link column lists molecule types, if any, to which the group is linked. The Z score for a bond length (or angle) is the number of standard deviations the observed value is removed from the expected value. A bond length (or angle) with $|Z| > 2$ is considered an outlier worth inspection. RMSZ is the root-mean-square of all Z scores of the bond lengths (or angles).

Mol	Type	Chain	Res	Link	Bond lengths			Bond angles		
					Counts	RMSZ	$\# Z > 2$	Counts	RMSZ	$\# Z > 2$
5	TRS	C	901	-	7,7,7	0.34	0	9,9,9	0.60	0
6	GOL	A	602	-	5,5,5	0.37	0	5,5,5	0.22	0
6	GOL	A	601	-	5,5,5	0.39	0	5,5,5	0.36	0
6	GOL	B	609	-	5,5,5	0.39	0	5,5,5	0.18	0
7	NAG	B	1001	1	14,14,15	0.55	0	17,19,21	1.29	2 (11%)
4	BEN	D	1003	-	9,9,9	1.22	1 (11%)	7,11,11	0.83	1 (14%)
6	GOL	B	604	-	5,5,5	0.41	0	5,5,5	0.19	0
3	SO4	A	501	-	4,4,4	0.28	0	6,6,6	0.42	0
4	BEN	A	1001	-	9,9,9	0.38	0	7,11,11	1.80	1 (14%)

Mol	Type	Chain	Res	Link	Bond lengths			Bond angles		
					Counts	RMSZ	# Z > 2	Counts	RMSZ	# Z > 2
6	GOL	C	603	-	5,5,5	0.39	0	5,5,5	0.24	0
3	SO4	C	500	-	4,4,4	0.20	0	6,6,6	0.37	0
5	TRS	A	900	-	7,7,7	0.37	0	9,9,9	0.59	0
7	NAG	D	1002	1	14,14,15	0.45	0	17,19,21	1.35	2 (11%)
6	GOL	B	608	-	5,5,5	0.42	0	5,5,5	0.26	0
6	GOL	A	606	-	5,5,5	0.36	0	5,5,5	0.32	0
6	GOL	A	610	-	5,5,5	0.33	0	5,5,5	0.37	0
4	BEN	B	1002	-	9,9,9	0.47	0	7,11,11	1.63	1 (14%)

In the following table, the Chirals column lists the number of chiral outliers, the number of chiral centers analysed, the number of these observed in the model and the number defined in the Chemical Component Dictionary. Similar counts are reported in the Torsion and Rings columns. '-' means no outliers of that kind were identified.

Mol	Type	Chain	Res	Link	Chirals	Torsions	Rings
5	TRS	C	901	-	-	6/9/9/9	-
6	GOL	A	602	-	-	2/4/4/4	-
6	GOL	A	601	-	-	2/4/4/4	-
6	GOL	B	609	-	-	0/4/4/4	-
7	NAG	B	1001	1	-	4/6/23/26	0/1/1/1
4	BEN	D	1003	-	-	0/4/4/4	0/1/1/1
6	GOL	B	604	-	-	2/4/4/4	-
7	NAG	D	1002	1	-	4/6/23/26	0/1/1/1
4	BEN	A	1001	-	-	0/4/4/4	0/1/1/1
6	GOL	C	603	-	-	0/4/4/4	-
5	TRS	A	900	-	-	2/9/9/9	-
6	GOL	B	608	-	-	2/4/4/4	-
6	GOL	A	606	-	-	0/4/4/4	-
6	GOL	A	610	-	-	4/4/4/4	-
4	BEN	B	1002	-	-	0/4/4/4	0/1/1/1

All (1) bond length outliers are listed below:

Mol	Chain	Res	Type	Atoms	Z	Observed(Å)	Ideal(Å)
4	D	1003	BEN	C1-C	2.71	1.52	1.47

The worst 5 of 7 bond angle outliers are listed below:

Mol	Chain	Res	Type	Atoms	Z	Observed(°)	Ideal(°)
7	D	1002	NAG	O5-C1-C2	-3.46	105.94	111.29

Continued on next page...

Continued from previous page...

Mol	Chain	Res	Type	Atoms	Z	Observed(°)	Ideal(°)
7	B	1001	NAG	O5-C1-C2	-3.22	106.31	111.29
4	A	1001	BEN	C6-C1-C2	3.17	122.61	118.57
4	B	1002	BEN	C6-C1-C2	2.84	122.18	118.57
7	D	1002	NAG	C1-O5-C5	2.65	115.73	112.19

There are no chirality outliers.

5 of 28 torsion outliers are listed below:

Mol	Chain	Res	Type	Atoms
5	C	901	TRS	C1-C-C2-O2
5	C	901	TRS	C3-C-C2-O2
5	C	901	TRS	N-C-C2-O2
6	A	601	GOL	O1-C1-C2-C3
6	B	604	GOL	O1-C1-C2-C3

There are no ring outliers.

5 monomers are involved in 8 short contacts:

Mol	Chain	Res	Type	Clashes	Symm-Clashes
6	A	602	GOL	1	0
6	B	604	GOL	2	0
6	B	608	GOL	2	0
6	A	606	GOL	1	0
4	B	1002	BEN	2	0

5.7 Other polymers [i](#)

There are no such residues in this entry.

5.8 Polymer linkage issues [i](#)

There are no chain breaks in this entry.

6 Fit of model and data [i](#)

6.1 Protein, DNA and RNA chains [i](#)

In the following table, the column labelled ‘#RSRZ> 2’ contains the number (and percentage) of RSRZ outliers, followed by percent RSRZ outliers for the chain as percentile scores relative to all X-ray entries and entries of similar resolution. The OWAB column contains the minimum, median, 95th percentile and maximum values of the occupancy-weighted average B-factor per residue. The column labelled ‘Q< 0.9’ lists the number of (and percentage) of residues with an average occupancy less than 0.9.

Mol	Chain	Analysed	<RSRZ>	#RSRZ>2	OWAB(Å ²)	Q<0.9
1	A	92/127 (72%)	1.01	11 (11%) 4 6	51, 61, 97, 103	0
1	B	95/127 (74%)	0.65	0 100 100	51, 61, 75, 86	0
1	C	90/127 (70%)	1.09	17 (18%) 1 1	50, 62, 91, 97	0
1	D	93/127 (73%)	0.94	12 (12%) 3 5	54, 62, 79, 84	0
All	All	370/508 (72%)	0.92	40 (10%) 5 8	50, 62, 87, 103	0

The worst 5 of 40 RSRZ outliers are listed below:

Mol	Chain	Res	Type	RSRZ
1	C	80	LEU	6.5
1	C	81	LEU	5.8
1	C	46	ARG	5.7
1	A	42	LEU	5.5
1	A	43	THR	5.4

6.2 Non-standard residues in protein, DNA, RNA chains [i](#)

There are no non-standard protein/DNA/RNA residues in this entry.

6.3 Carbohydrates [i](#)

There are no monosaccharides in this entry.

6.4 Ligands [i](#)

In the following table, the Atoms column lists the number of modelled atoms in the group and the number defined in the chemical component dictionary. The B-factors column lists the minimum, median, 95th percentile and maximum values of B factors of atoms in the group. The column labelled ‘Q< 0.9’ lists the number of atoms with occupancy less than 0.9.

Mol	Type	Chain	Res	Atoms	RSCC	RSR	B-factors(\AA^2)	Q<0.9
5	TRS	C	901	8/8	0.52	0.36	109,113,116,116	0
6	GOL	A	610	6/6	0.60	0.31	119,124,124,125	0
5	TRS	A	900	8/8	0.64	0.30	103,104,105,105	0
6	GOL	A	602	6/6	0.71	0.19	92,96,101,104	0
6	GOL	B	608	6/6	0.71	0.40	109,113,114,115	0
4	BEN	D	1003	9/9	0.72	0.34	89,90,91,91	0
6	GOL	A	606	6/6	0.72	0.23	104,118,120,120	0
6	GOL	B	604	6/6	0.74	0.37	107,109,110,112	0
6	GOL	B	609	6/6	0.78	0.26	108,115,118,119	0
6	GOL	C	603	6/6	0.79	0.18	100,111,114,114	0
7	NAG	B	1001	14/15	0.84	0.39	100,108,117,121	0
7	NAG	D	1002	14/15	0.85	0.39	69,101,107,112	0
6	GOL	A	601	6/6	0.87	0.13	97,107,109,110	0
2	CL	C	704	1/1	0.94	0.08	80,80,80,80	0
3	SO4	A	501	5/5	0.96	0.09	61,76,77,84	0
3	SO4	C	500	5/5	0.96	0.09	73,81,85,87	0
2	CL	A	702	1/1	0.96	0.10	87,87,87,87	0
4	BEN	A	1001	9/9	0.97	0.16	28,34,40,45	0
4	BEN	B	1002	9/9	0.97	0.25	32,38,47,50	0
2	CL	C	705	1/1	0.97	0.05	84,84,84,84	0

6.5 Other polymers [\(i\)](#)

There are no such residues in this entry.