



# Full wwPDB X-ray Structure Validation Report ⓘ

Mar 9, 2018 – 01:44 pm GMT

PDB ID : 4GOK  
Title : The Crystal structure of Arl2GppNHp in complex with UNC119a  
Authors : Ismail, S.; Xiang-Chen, Y.; Miertzschke, M.; Vetter, I.; Koerner, C.; Wittinghofer, A.  
Deposited on : 2012-08-20  
Resolution : 2.60 Å(reported)

This is a Full wwPDB X-ray Structure Validation Report for a publicly released PDB entry.

We welcome your comments at [validation@mail.wwpdb.org](mailto:validation@mail.wwpdb.org)

A user guide is available at

<https://www.wwpdb.org/validation/2017/XrayValidationReportHelp>

with specific help available everywhere you see the ⓘ symbol.

---

The following versions of software and data (see [references ⓘ](#)) were used in the production of this report:

MolProbity : 4.02b-467  
Mogul : 1.7.3 (157068), CSD as539be (2018)  
Xtriage (Phenix) : 1.13  
EDS : trunk30967  
Percentile statistics : 20171227.v01 (using entries in the PDB archive December 27th 2017)  
Refmac : 5.8.0158  
CCP4 : 7.0 (Gargrove)  
Ideal geometry (proteins) : Engh & Huber (2001)  
Ideal geometry (DNA, RNA) : Parkinson et al. (1996)  
Validation Pipeline (wwPDB-VP) : trunk30967

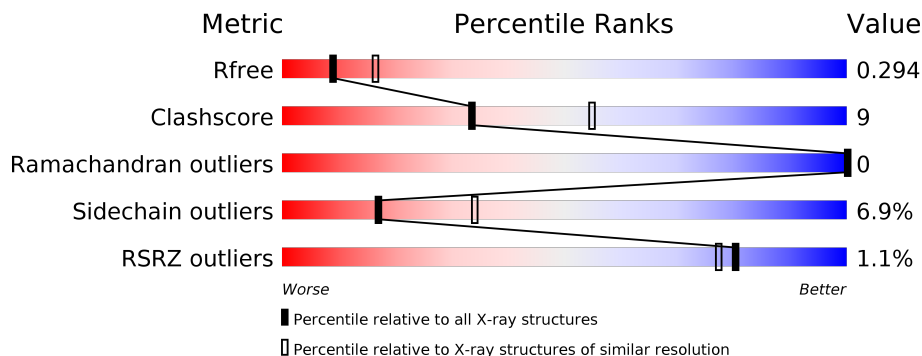
# 1 Overall quality at a glance

The following experimental techniques were used to determine the structure:

*X-RAY DIFFRACTION*

The reported resolution of this entry is 2.60 Å.

Percentile scores (ranging between 0-100) for global validation metrics of the entry are shown in the following graphic. The table shows the number of entries on which the scores are based.



Metric	Whole archive (#Entries)	Similar resolution (#Entries, resolution range(Å))
$R_{free}$	111664	2767 (2.60-2.60)
Clashscore	122126	3110 (2.60-2.60)
Ramachandran outliers	120053	3062 (2.60-2.60)
Sidechain outliers	120020	3062 (2.60-2.60)
RSRZ outliers	108989	2706 (2.60-2.60)

The table below summarises the geometric issues observed across the polymeric chains and their fit to the electron density. The red, orange, yellow and green segments on the lower bar indicate the fraction of residues that contain outliers for  $\geq 3$ , 2, 1 and 0 types of geometric quality criteria. A grey segment represents the fraction of residues that are not modelled. The numeric value for each fraction is indicated below the corresponding segment, with a dot representing fractions  $\leq 5\%$ . The upper red bar (where present) indicates the fraction of residues that have poor fit to the electron density. The numeric value is given above the bar.

Mol	Chain	Length	Quality of chain
1	A	169	
1	B	169	
2	C	240	
2	G	240	

## 2 Entry composition

There are 5 unique types of molecules in this entry. The entry contains 5234 atoms, of which 0 are hydrogens and 0 are deuteriums.

In the tables below, the ZeroOcc column contains the number of atoms modelled with zero occupancy, the AltConf column contains the number of residues with at least one atom in alternate conformation and the Trace column contains the number of residues modelled with at most 2 atoms.

- Molecule 1 is a protein called ADP-ribosylation factor-like protein 2.

Mol	Chain	Residues	Atoms					ZeroOcc	AltConf	Trace
			Total	C	N	O	S			
1	B	157	1249	791	221	232	5	0	0	0
1	A	158	1257	795	223	234	5	0	0	0

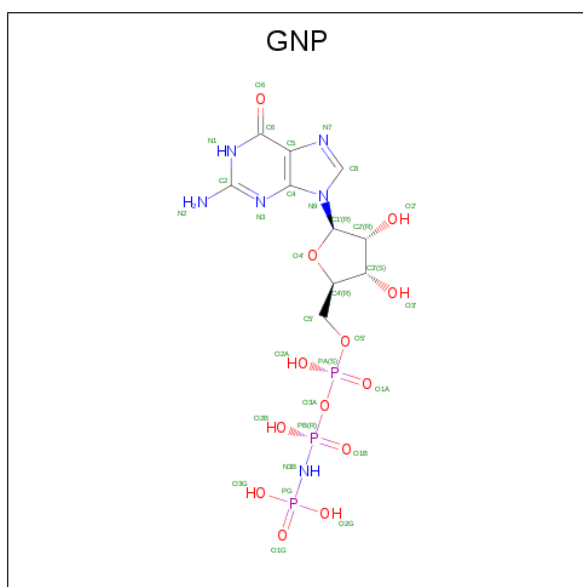
There are 4 discrepancies between the modelled and reference sequences:

Chain	Residue	Modelled	Actual	Comment	Reference
B	16	MET	-	EXPRESSION TAG	UNP Q9D0J4
B	70	LEU	GLN	ENGINEERED MUTATION	UNP Q9D0J4
A	16	MET	-	EXPRESSION TAG	UNP Q9D0J4
A	70	LEU	GLN	ENGINEERED MUTATION	UNP Q9D0J4

- Molecule 2 is a protein called Protein unc-119 homolog A.

Mol	Chain	Residues	Atoms					ZeroOcc	AltConf	Trace
			Total	C	N	O	S			
2	G	161	1324	854	222	241	7	0	0	0
2	C	161	1324	854	222	241	7	0	0	0

- Molecule 3 is PHOSPHOAMINOPHOSPHONIC ACID-GUANYLATE ESTER (three-letter code: GNP) (formula:  $C_{10}H_{17}N_6O_{13}P_3$ ).



Mol	Chain	Residues	Atoms				ZeroOcc	AltConf	
3	B	1	Total	C	N	O	P	0	0
			32	10	6	13	3		
3	A	1	Total	C	N	O	P	0	0
			32	10	6	13	3		

- Molecule 4 is MAGNESIUM ION (three-letter code: MG) (formula: Mg).

Mol	Chain	Residues	Atoms		ZeroOcc	AltConf
4	B	1	Total	Mg	0	0
			1	1		
4	A	1	Total	Mg	0	0
			1	1		

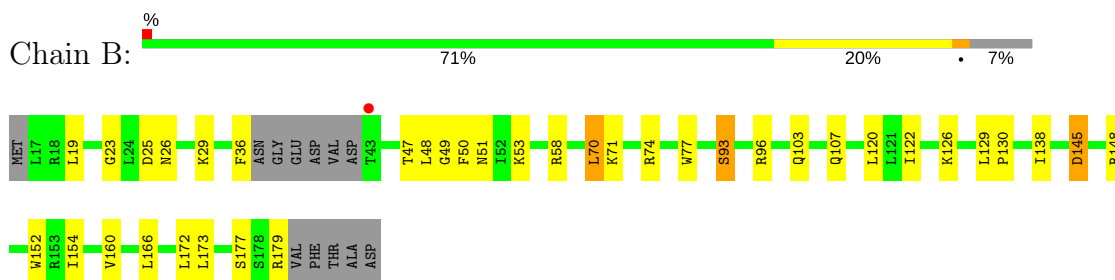
- Molecule 5 is water.

Mol	Chain	Residues	Atoms		ZeroOcc	AltConf
5	B	3	Total	O	0	0
			3	3		
5	G	4	Total	O	0	0
			4	4		
5	A	3	Total	O	0	0
			3	3		
5	C	4	Total	O	0	0
			4	4		

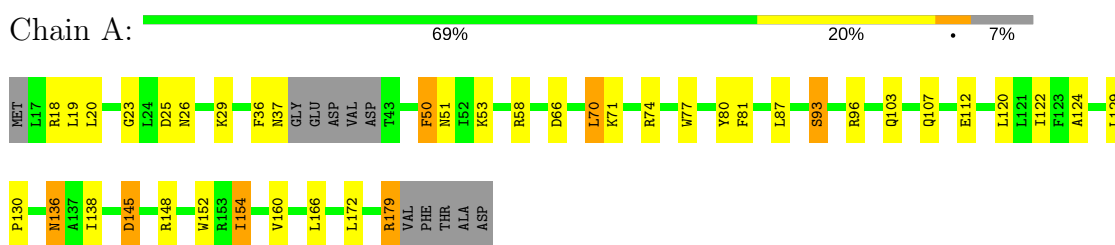
### 3 Residue-property plots [i](#)

These plots are drawn for all protein, RNA and DNA chains in the entry. The first graphic for a chain summarises the proportions of the various outlier classes displayed in the second graphic. The second graphic shows the sequence view annotated by issues in geometry and electron density. Residues are color-coded according to the number of geometric quality criteria for which they contain at least one outlier: green = 0, yellow = 1, orange = 2 and red = 3 or more. A red dot above a residue indicates a poor fit to the electron density ( $RSRZ > 2$ ). Stretches of 2 or more consecutive residues without any outlier are shown as a green connector. Residues present in the sample, but not in the model, are shown in grey.

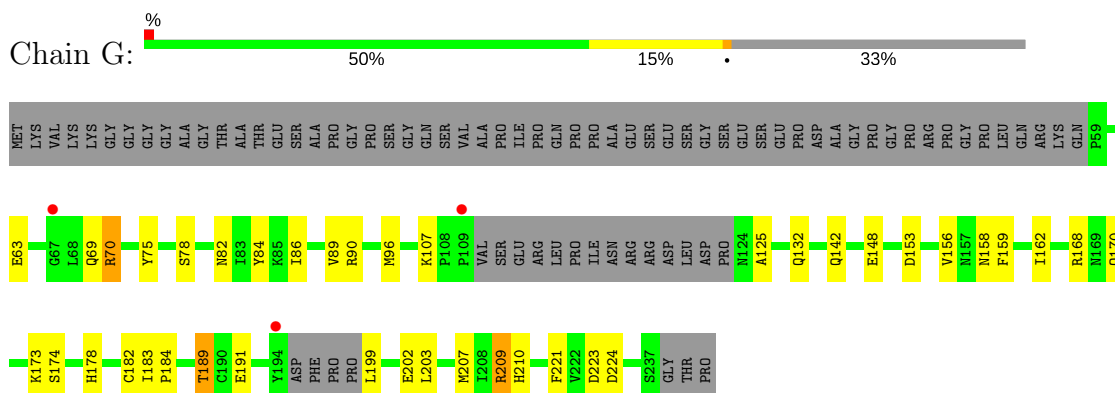
- Molecule 1: ADP-ribosylation factor-like protein 2



- Molecule 1: ADP-ribosylation factor-like protein 2

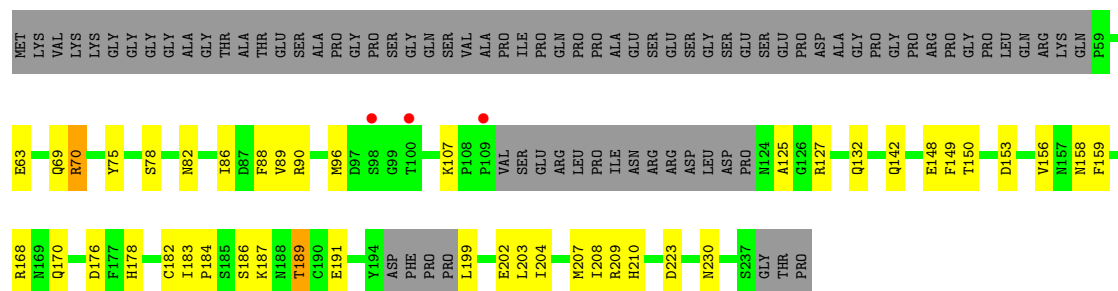


- Molecule 2: Protein unc-119 homolog A



- Molecule 2: Protein unc-119 homolog A





## 4 Data and refinement statistics i

Property	Value	Source
Space group	C 1 2 1	Depositor
Cell constants a, b, c, $\alpha$ , $\beta$ , $\gamma$	101.45Å 61.08Å 143.62Å 90.00° 101.33° 90.00°	Depositor
Resolution (Å)	29.85 – 2.60 29.85 – 2.60	Depositor EDS
% Data completeness (in resolution range)	99.2 (29.85-2.60) 99.3 (29.85-2.60)	Depositor EDS
$R_{merge}$	0.22	Depositor
$R_{sym}$	(Not available)	Depositor
$\langle I/\sigma(I) \rangle$ <sup>1</sup>	3.58 (at 2.61Å)	Xtrriage
Refinement program	REFMAC 5.6.0093	Depositor
R, $R_{free}$	0.245 , 0.297 0.245 , 0.294	Depositor DCC
$R_{free}$ test set	1331 reflections (5.00%)	wwPDB-VP
Wilson B-factor (Å <sup>2</sup> )	27.7	Xtrriage
Anisotropy	0.130	Xtrriage
Bulk solvent $k_{sol}$ (e/Å <sup>3</sup> ), $B_{sol}$ (Å <sup>2</sup> )	0.39 , 43.4	EDS
L-test for twinning <sup>2</sup>	$\langle  L  \rangle = 0.53$ , $\langle L^2 \rangle = 0.37$	Xtrriage
Estimated twinning fraction	0.000 for $1/2^*h+3/2^*k, 1/2^*h-1/2^*k, -1/2^*h-1/2^*k-l$ 0.000 for $1/2^*h-3/2^*k, -1/2^*h-1/2^*k, -1/2^*h+1/2^*k-l$	Xtrriage
$F_o, F_c$ correlation	0.93	EDS
Total number of atoms	5234	wwPDB-VP
Average B, all atoms (Å <sup>2</sup> )	26.0	wwPDB-VP

Xtrriage's analysis on translational NCS is as follows: *The analyses of the Patterson function reveals a significant off-origin peak that is 59.93 % of the origin peak, indicating pseudo-translational symmetry. The chance of finding a peak of this or larger height randomly in a structure without pseudo-translational symmetry is equal to 1.6398e-05. The detected translational NCS is most likely also responsible for the elevated intensity ratio.*

<sup>1</sup>Intensities estimated from amplitudes.

<sup>2</sup>Theoretical values of  $\langle |L| \rangle$ ,  $\langle L^2 \rangle$  for acentric reflections are 0.5, 0.333 respectively for untwinned datasets, and 0.375, 0.2 for perfectly twinned datasets.

## 5 Model quality [i](#)

### 5.1 Standard geometry [i](#)

Bond lengths and bond angles in the following residue types are not validated in this section: GNP, MG

The Z score for a bond length (or angle) is the number of standard deviations the observed value is removed from the expected value. A bond length (or angle) with  $|Z| > 5$  is considered an outlier worth inspection. RMSZ is the root-mean-square of all Z scores of the bond lengths (or angles).

Mol	Chain	Bond lengths		Bond angles	
		RMSZ	# Z  >5	RMSZ	# Z  >5
1	A	0.76	0/1278	0.87	1/1726 (0.1%)
1	B	0.74	0/1270	0.86	1/1715 (0.1%)
2	C	0.79	0/1359	0.79	1/1833 (0.1%)
2	G	0.79	0/1359	0.79	1/1833 (0.1%)
All	All	0.77	0/5266	0.83	4/7107 (0.1%)

There are no bond length outliers.

All (4) bond angle outliers are listed below:

Mol	Chain	Res	Type	Atoms	Z	Observed(°)	Ideal(°)
1	A	70	LEU	CA-CB-CG	7.62	132.84	115.30
1	B	70	LEU	CA-CB-CG	7.18	131.82	115.30
2	C	176	ASP	CB-CG-OD1	5.60	123.34	118.30
2	G	224	ASP	CB-CG-OD1	5.05	122.85	118.30

There are no chirality outliers.

There are no planarity outliers.

### 5.2 Too-close contacts [i](#)

In the following table, the Non-H and H(model) columns list the number of non-hydrogen atoms and hydrogen atoms in the chain respectively. The H(added) column lists the number of hydrogen atoms added and optimized by MolProbity. The Clashes column lists the number of clashes within the asymmetric unit, whereas Symm-Clashes lists symmetry related clashes.

Mol	Chain	Non-H	H(model)	H(added)	Clashes	Symm-Clashes
1	A	1257	0	1261	25	0
1	B	1249	0	1256	23	0
2	C	1324	0	1265	26	0

*Continued on next page...*



Continued from previous page...

Mol	Chain	Non-H	H(model)	H(added)	Clashes	Symm-Clashes
2	G	1324	0	1265	25	0
3	A	32	0	13	0	0
3	B	32	0	13	1	0
4	A	1	0	0	0	0
4	B	1	0	0	0	0
5	A	3	0	0	0	0
5	B	3	0	0	1	0
5	C	4	0	0	0	0
5	G	4	0	0	0	0
All	All	5234	0	5073	95	0

The all-atom clashscore is defined as the number of clashes found per 1000 atoms (including hydrogen atoms). The all-atom clashscore for this structure is 9.

All (95) close contacts within the same asymmetric unit are listed below, sorted by their clash magnitude.

Atom-1	Atom-2	Interatomic distance (Å)	Clash overlap (Å)
2:C:70:ARG:HH11	2:C:70:ARG:HG2	1.11	1.16
2:G:70:ARG:HH11	2:G:70:ARG:HG2	1.06	1.12
1:A:93:SER:HB3	1:A:138:ILE:HD11	1.43	1.00
2:G:70:ARG:NH1	2:G:70:ARG:HG2	1.86	0.85
1:B:93:SER:HB3	1:B:138:ILE:HD11	1.65	0.78
2:G:70:ARG:CG	2:G:70:ARG:HH11	1.94	0.77
2:C:70:ARG:HH11	2:C:70:ARG:CG	1.94	0.76
2:C:70:ARG:NH1	2:C:70:ARG:HG2	1.90	0.73
2:C:156:VAL:HB	2:C:182:CYS:HB2	1.74	0.69
1:A:103:GLN:NE2	1:A:107:GLN:HG3	2.07	0.68
1:A:71:LYS:HD3	1:A:74:ARG:NH2	2.08	0.67
1:B:53:LYS:HE3	2:G:191:GLU:OE2	1.98	0.64
2:G:156:VAL:HB	2:G:182:CYS:HB2	1.79	0.64
2:C:158:ASN:ND2	2:C:178:HIS:HE1	1.96	0.63
1:A:53:LYS:HE3	2:C:191:GLU:OE2	2.03	0.59
1:B:103:GLN:HE21	1:B:107:GLN:HG3	1.66	0.59
2:G:199:LEU:HD22	2:G:203:LEU:HD23	1.85	0.58
1:B:145:ASP:O	1:B:148:ARG:NH2	2.37	0.58
1:B:103:GLN:NE2	1:B:107:GLN:HG3	2.19	0.57
1:B:71:LYS:HD3	1:B:74:ARG:NH2	2.20	0.57
2:G:158:ASN:ND2	2:G:178:HIS:HE1	2.01	0.57
2:G:70:ARG:CG	2:G:70:ARG:NH1	2.61	0.56
2:G:75:TYR:CD2	2:G:125:ALA:HA	2.41	0.55
1:B:47:THR:HG22	1:B:49:GLY:O	2.07	0.55

Continued on next page...

*Continued from previous page...*

Atom-1	Atom-2	Interatomic distance (Å)	Clash overlap (Å)
2:C:70:ARG:NH1	2:C:70:ARG:CG	2.61	0.55
1:B:179:ARG:HG3	1:B:179:ARG:HH11	1.73	0.54
2:C:199:LEU:HD22	2:C:203:LEU:HD23	1.88	0.54
1:A:122:ILE:HD12	1:A:122:ILE:N	2.23	0.54
1:A:51:ASN:OD1	2:C:189:THR:HB	2.10	0.52
1:A:145:ASP:O	1:A:148:ARG:NH2	2.39	0.52
1:B:25:ASP:O	1:B:26:ASN:HB3	2.09	0.52
2:C:89:VAL:HB	2:C:107:LYS:O	2.09	0.52
1:B:29:LYS:HE2	5:B:301:HOH:O	2.09	0.52
2:C:183:ILE:HG23	2:C:184:PRO:HD2	1.91	0.51
1:A:23:GLY:N	1:A:29:LYS:HD3	2.26	0.51
2:C:86:ILE:HD13	2:C:159:PHE:CE1	2.46	0.51
1:A:71:LYS:HD3	1:A:74:ARG:HH22	1.72	0.51
1:B:23:GLY:N	1:B:29:LYS:HD3	2.26	0.50
1:A:50:PHE:CD1	1:A:50:PHE:C	2.85	0.49
1:A:103:GLN:HE21	1:A:107:GLN:HG3	1.74	0.49
2:G:89:VAL:HB	2:G:107:LYS:O	2.13	0.49
1:A:25:ASP:O	1:A:26:ASN:HB3	2.11	0.49
2:G:90:ARG:HB3	2:G:148:GLU:HB2	1.94	0.49
1:B:166:LEU:HA	1:B:166:LEU:HD23	1.62	0.48
2:C:75:TYR:CD2	2:C:125:ALA:HA	2.48	0.48
1:B:71:LYS:HD3	1:B:74:ARG:HH22	1.77	0.48
1:A:122:ILE:HD12	1:A:122:ILE:H	1.78	0.48
2:C:203:LEU:HG	2:C:207:MET:HE2	1.95	0.48
2:C:132:GLN:OE1	2:C:132:GLN:HA	2.14	0.48
1:B:173:LEU:O	1:B:177:SER:HB2	2.15	0.47
1:B:51:ASN:OD1	2:G:189:THR:HB	2.15	0.47
1:A:124:ALA:HB2	1:A:154:ILE:HD11	1.97	0.47
2:C:150:THR:HG22	2:C:187:LYS:HG3	1.96	0.46
2:G:153:ASP:O	2:G:184:PRO:HB3	2.15	0.46
2:C:69:GLN:OE1	2:C:69:GLN:HA	2.15	0.46
1:B:50:PHE:CD1	1:B:50:PHE:C	2.89	0.46
2:G:96:MET:HB2	2:G:142:GLN:HB3	1.99	0.45
1:A:166:LEU:HA	1:A:166:LEU:HD23	1.61	0.45
1:B:120:LEU:O	1:B:152:TRP:HA	2.16	0.45
1:A:120:LEU:O	1:A:152:TRP:HA	2.16	0.45
1:A:129:LEU:O	1:A:130:PRO:C	2.55	0.45
2:C:168:ARG:NH2	2:C:210:HIS:CE1	2.84	0.45
1:A:19:LEU:HD22	1:A:172:LEU:HD21	1.99	0.45
1:A:18:ARG:NH2	1:A:80:TYR:HB3	2.32	0.45
1:B:129:LEU:O	1:B:130:PRO:C	2.55	0.45

*Continued on next page...*

Continued from previous page...

Atom-1	Atom-2	Interatomic distance (Å)	Clash overlap (Å)
1:A:20:LEU:O	1:A:87:LEU:HD12	2.16	0.44
1:B:126:LYS:HB3	1:B:129:LEU:HD12	1.98	0.44
2:G:168:ARG:NH2	2:G:210:HIS:CE1	2.85	0.44
1:B:19:LEU:HD22	1:B:172:LEU:HD21	1.99	0.44
2:G:209:ARG:HB3	2:G:210:HIS:CD2	2.52	0.44
2:G:69:GLN:OE1	2:G:69:GLN:HA	2.17	0.44
2:C:153:ASP:O	2:C:184:PRO:HB3	2.17	0.44
2:G:173:LYS:HD2	2:G:174:SER:H	1.82	0.44
2:C:96:MET:HB2	2:C:142:GLN:HB3	2.01	0.43
2:C:90:ARG:HB3	2:C:148:GLU:HB2	1.99	0.43
2:G:203:LEU:O	2:G:207:MET:HE2	2.18	0.43
1:B:25:ASP:HA	3:B:201:GNP:O3G	2.19	0.43
2:G:84:TYR:CD1	2:G:156:VAL:HG22	2.53	0.43
2:G:183:ILE:HG23	2:G:184:PRO:HD2	2.00	0.43
2:C:204:ILE:O	2:C:208:ILE:HG13	2.19	0.43
2:G:86:ILE:HD13	2:G:159:PHE:CE1	2.54	0.43
2:C:127:ARG:HB2	2:C:230:ASN:OD1	2.19	0.42
1:A:136:ASN:OD1	1:A:136:ASN:N	2.50	0.42
2:C:150:THR:HA	2:C:186:SER:O	2.19	0.42
2:C:203:LEU:HG	2:C:207:MET:CE	2.49	0.42
2:G:90:ARG:HD3	2:G:148:GLU:OE2	2.19	0.42
1:A:51:ASN:HB2	1:A:66:ASP:HB3	2.02	0.41
2:C:88:PHE:CD2	2:C:149:PHE:HB3	2.56	0.41
1:A:179:ARG:HD3	1:A:179:ARG:HA	1.78	0.41
2:G:162:ILE:HD12	2:G:221:PHE:CE1	2.55	0.41
1:A:81:PHE:CD2	1:A:112:GLU:HG2	2.55	0.41
1:B:74:ARG:HG2	1:B:77:TRP:CZ2	2.55	0.41
1:B:122:ILE:HD12	1:B:122:ILE:N	2.36	0.41
1:A:74:ARG:HG2	1:A:77:TRP:CZ2	2.55	0.40
2:G:132:GLN:HA	2:G:132:GLN:OE1	2.21	0.40

There are no symmetry-related clashes.

## 5.3 Torsion angles [i](#)

### 5.3.1 Protein backbone [i](#)

In the following table, the Percentiles column shows the percent Ramachandran outliers of the chain as a percentile score with respect to all X-ray entries followed by that with respect to entries of similar resolution.

The Analysed column shows the number of residues for which the backbone conformation was analysed, and the total number of residues.

Mol	Chain	Analysed	Favoured	Allowed	Outliers	Percentiles	
1	A	154/169 (91%)	147 (96%)	7 (4%)	0	100	100
1	B	153/169 (90%)	146 (95%)	7 (5%)	0	100	100
2	C	155/240 (65%)	149 (96%)	6 (4%)	0	100	100
2	G	155/240 (65%)	148 (96%)	7 (4%)	0	100	100
All	All	617/818 (75%)	590 (96%)	27 (4%)	0	100	100

There are no Ramachandran outliers to report.

### 5.3.2 Protein sidechains [i](#)

In the following table, the Percentiles column shows the percent sidechain outliers of the chain as a percentile score with respect to all X-ray entries followed by that with respect to entries of similar resolution.

The Analysed column shows the number of residues for which the sidechain conformation was analysed, and the total number of residues.

Mol	Chain	Analysed	Rotameric	Outliers	Percentiles	
1	A	137/146 (94%)	125 (91%)	12 (9%)	11	21
1	B	136/146 (93%)	127 (93%)	9 (7%)	18	37
2	C	145/210 (69%)	136 (94%)	9 (6%)	20	40
2	G	145/210 (69%)	136 (94%)	9 (6%)	20	40
All	All	563/712 (79%)	524 (93%)	39 (7%)	17	34

All (39) residues with a non-rotameric sidechain are listed below:

Mol	Chain	Res	Type
1	B	36	PHE
1	B	48	LEU
1	B	58	ARG
1	B	70	LEU
1	B	93	SER
1	B	96	ARG
1	B	145	ASP
1	B	154	ILE
1	B	160	VAL
2	G	63	GLU

*Continued on next page...*

*Continued from previous page...*

Mol	Chain	Res	Type
2	G	70	ARG
2	G	78	SER
2	G	82	ASN
2	G	170	GLN
2	G	189	THR
2	G	202	GLU
2	G	209	ARG
2	G	223	ASP
1	A	36	PHE
1	A	37	ASN
1	A	50	PHE
1	A	58	ARG
1	A	70	LEU
1	A	93	SER
1	A	96	ARG
1	A	136	ASN
1	A	145	ASP
1	A	154	ILE
1	A	160	VAL
1	A	179	ARG
2	C	63	GLU
2	C	70	ARG
2	C	78	SER
2	C	82	ASN
2	C	170	GLN
2	C	189	THR
2	C	202	GLU
2	C	209	ARG
2	C	223	ASP

Some sidechains can be flipped to improve hydrogen bonding and reduce clashes. All (13) such sidechains are listed below:

Mol	Chain	Res	Type
1	B	103	GLN
2	G	82	ASN
2	G	158	ASN
2	G	178	HIS
2	G	192	HIS
2	G	210	HIS
1	A	37	ASN
1	A	103	GLN
2	C	82	ASN

*Continued on next page...*

*Continued from previous page...*

Mol	Chain	Res	Type
2	C	158	ASN
2	C	178	HIS
2	C	192	HIS
2	C	210	HIS

### 5.3.3 RNA [i](#)

There are no RNA molecules in this entry.

### 5.4 Non-standard residues in protein, DNA, RNA chains [i](#)

There are no non-standard protein/DNA/RNA residues in this entry.

### 5.5 Carbohydrates [i](#)

There are no carbohydrates in this entry.

### 5.6 Ligand geometry [i](#)

Of 4 ligands modelled in this entry, 2 are monoatomic - leaving 2 for Mogul analysis.

In the following table, the Counts columns list the number of bonds (or angles) for which Mogul statistics could be retrieved, the number of bonds (or angles) that are observed in the model and the number of bonds (or angles) that are defined in the Chemical Component Dictionary. The Link column lists molecule types, if any, to which the group is linked. The Z score for a bond length (or angle) is the number of standard deviations the observed value is removed from the expected value. A bond length (or angle) with  $|Z| > 2$  is considered an outlier worth inspection. RMSZ is the root-mean-square of all Z scores of the bond lengths (or angles).

Mol	Type	Chain	Res	Link	Bond lengths			Bond angles		
					Counts	RMSZ	# Z  > 2	Counts	RMSZ	# Z  > 2
3	GNP	A	201	4	27,34,34	2.65	9 (33%)	30,54,54	2.20	7 (23%)
3	GNP	B	201	4	27,34,34	2.73	11 (40%)	30,54,54	2.21	7 (23%)

In the following table, the Chirals column lists the number of chiral outliers, the number of chiral centers analysed, the number of these observed in the model and the number defined in the Chemical Component Dictionary. Similar counts are reported in the Torsion and Rings columns. '-' means no outliers of that kind were identified.

Mol	Type	Chain	Res	Link	Chirals	Torsions	Rings
3	GNP	A	201	4	-	0/16/38/38	0/3/3/3
3	GNP	B	201	4	-	0/16/38/38	0/3/3/3

All (20) bond length outliers are listed below:

Mol	Chain	Res	Type	Atoms	Z	Observed(Å)	Ideal(Å)
3	B	201	GNP	C4-N9	-7.70	1.37	1.47
3	A	201	GNP	C4-N9	-7.22	1.38	1.47
3	A	201	GNP	C5-C6	-5.99	1.42	1.52
3	B	201	GNP	C5-C6	-5.82	1.42	1.52
3	B	201	GNP	PB-O3A	-3.98	1.54	1.59
3	B	201	GNP	PB-O2B	-3.54	1.46	1.56
3	B	201	GNP	C8-N9	-3.33	1.37	1.46
3	B	201	GNP	PG-O2G	-3.11	1.48	1.56
3	A	201	GNP	C8-N9	-2.98	1.38	1.46
3	A	201	GNP	PB-O3A	-2.80	1.55	1.59
3	A	201	GNP	PB-O2B	-2.78	1.49	1.56
3	B	201	GNP	PG-O3G	-2.65	1.49	1.56
3	A	201	GNP	C5-C4	-2.54	1.36	1.52
3	A	201	GNP	PG-O3G	-2.44	1.50	1.56
3	B	201	GNP	C5-C4	-2.20	1.38	1.52
3	B	201	GNP	PB-O1B	2.88	1.49	1.46
3	B	201	GNP	PG-O1G	3.15	1.49	1.46
3	A	201	GNP	PG-O1G	4.46	1.51	1.46
3	B	201	GNP	C6-N1	4.63	1.40	1.33
3	A	201	GNP	C6-N1	5.30	1.42	1.33

All (14) bond angle outliers are listed below:

Mol	Chain	Res	Type	Atoms	Z	Observed(°)	Ideal(°)
3	B	201	GNP	C5-C6-N1	-6.62	110.38	118.27
3	A	201	GNP	O3G-PG-O1G	-5.06	100.57	113.43
3	A	201	GNP	C5-C6-N1	-4.85	112.49	118.27
3	B	201	GNP	O3G-PG-O1G	-4.48	102.05	113.43
3	B	201	GNP	O1B-PB-N3B	-2.05	108.73	111.79
3	B	201	GNP	O1G-PG-N3B	-2.02	108.76	111.79
3	B	201	GNP	O2B-PB-O1B	2.23	114.50	109.88
3	A	201	GNP	O3G-PG-O2G	2.30	113.86	107.61
3	A	201	GNP	O2B-PB-O3A	2.63	114.73	104.54
3	A	201	GNP	O6-C6-C5	3.56	127.15	119.82
3	B	201	GNP	O6-C6-C5	4.65	129.40	119.82
3	B	201	GNP	C4-C5-N7	4.88	108.93	102.46
3	A	201	GNP	O1B-PB-N3B	4.89	119.10	111.79

*Continued on next page...*

*Continued from previous page...*

Mol	Chain	Res	Type	Atoms	Z	Observed(°)	Ideal(°)
3	A	201	GNP	C4-C5-N7	5.35	109.55	102.46

There are no chirality outliers.

There are no torsion outliers.

There are no ring outliers.

1 monomer is involved in 1 short contact:

Mol	Chain	Res	Type	Clashes	Symm-Clashes
3	B	201	GNP	1	0

## 5.7 Other polymers [i](#)

There are no such residues in this entry.

## 5.8 Polymer linkage issues [i](#)

There are no chain breaks in this entry.



## 6 Fit of model and data [i](#)

### 6.1 Protein, DNA and RNA chains [i](#)

In the following table, the column labelled ‘#RSRZ> 2’ contains the number (and percentage) of RSRZ outliers, followed by percent RSRZ outliers for the chain as percentile scores relative to all X-ray entries and entries of similar resolution. The OWAB column contains the minimum, median, 95<sup>th</sup> percentile and maximum values of the occupancy-weighted average B-factor per residue. The column labelled ‘Q< 0.9’ lists the number of (and percentage) of residues with an average occupancy less than 0.9.

Mol	Chain	Analysed	<RSRZ>	#RSRZ>2	OWAB(Å <sup>2</sup> )	Q<0.9
1	A	158/169 (93%)	-0.07	0 <b>100</b>   <b>100</b>	11, 26, 45, 62	0
1	B	157/169 (92%)	-0.10	1 (0%) <b>89</b>   <b>88</b>	10, 24, 49, 67	0
2	C	161/240 (67%)	-0.21	3 (1%) <b>66</b>   <b>61</b>	10, 25, 42, 50	0
2	G	161/240 (67%)	-0.25	3 (1%) <b>66</b>   <b>61</b>	12, 25, 43, 62	0
All	All	637/818 (77%)	-0.16	7 (1%) <b>80</b>   <b>77</b>	10, 25, 45, 67	0

All (7) RSRZ outliers are listed below:

Mol	Chain	Res	Type	RSRZ
2	C	98	SER	4.3
2	C	109	PRO	2.6
2	G	67	GLY	2.3
2	C	100	THR	2.1
2	G	194	TYR	2.1
2	G	109	PRO	2.1
1	B	43	THR	2.0

### 6.2 Non-standard residues in protein, DNA, RNA chains [i](#)

There are no non-standard protein/DNA/RNA residues in this entry.

### 6.3 Carbohydrates [i](#)

There are no carbohydrates in this entry.

## 6.4 Ligands [i](#)

In the following table, the Atoms column lists the number of modelled atoms in the group and the number defined in the chemical component dictionary. The B-factors column lists the minimum, median, 95<sup>th</sup> percentile and maximum values of B factors of atoms in the group. The column labelled 'Q< 0.9' lists the number of atoms with occupancy less than 0.9.

Mol	Type	Chain	Res	Atoms	RSCC	RSR	B-factors(Å <sup>2</sup> )	Q<0.9
3	GNP	A	201	32/32	0.96	0.13	12,18,23,25	0
3	GNP	B	201	32/32	0.96	0.12	15,19,22,25	0
4	MG	A	202	1/1	0.99	0.10	13,13,13,13	0
4	MG	B	202	1/1	0.99	0.09	31,31,31,31	0

## 6.5 Other polymers [i](#)

There are no such residues in this entry.