



Full wwPDB X-ray Structure Validation Report ⓘ

Dec 9, 2024 – 06:03 pm GMT

PDB ID : 9GOK
Title : X-ray structure of lysozyme obtained upon reaction with the dioxidovanadium(V) complex with (E)-N'-(1-(2-hydroxy-5-methoxyphenyl)ethylidene)uran-2-carbohydrazide)
Authors : Paolillo, M.; Ferraro, G.; Merlino, A.
Deposited on : 2024-09-05
Resolution : 1.18 Å(reported)

This is a Full wwPDB X-ray Structure Validation Report for a publicly released PDB entry.

We welcome your comments at validation@mail.wwpdb.org

A user guide is available at

<https://www.wwpdb.org/validation/2017/XrayValidationReportHelp>

with specific help available everywhere you see the ⓘ symbol.

The types of validation reports are described at

<http://www.wwpdb.org/validation/2017/FAQs#types>.

The following versions of software and data (see [references ⓘ](#)) were used in the production of this report:

MolProbity : 4.02b-467
Mogul : 1.8.4, CSD as541be (2020)
Xtriage (Phenix) : 1.13
EDS : 3.0
buster-report : 1.1.7 (2018)
Percentile statistics : 20231227.v01 (using entries in the PDB archive December 27th 2023)
CCP4 : 9.0.003 (Gargrove)
Density-Fitness : 1.0.11
Ideal geometry (proteins) : Engh & Huber (2001)
Ideal geometry (DNA, RNA) : Parkinson et al. (1996)
Validation Pipeline (wwPDB-VP) : 2.40

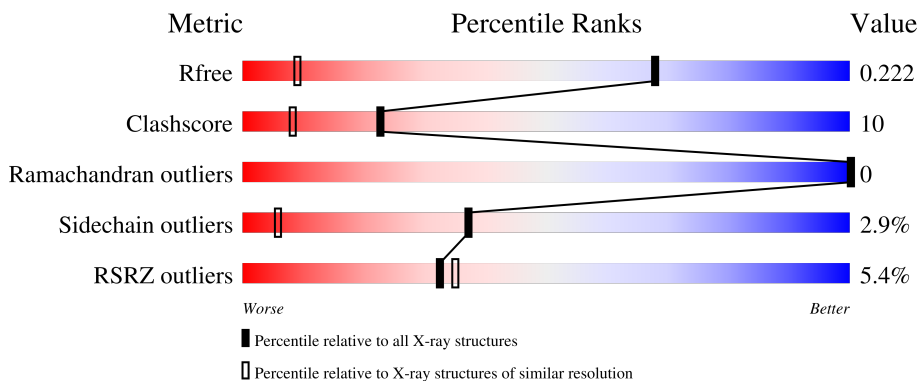
1 Overall quality at a glance

The following experimental techniques were used to determine the structure:

X-RAY DIFFRACTION

The reported resolution of this entry is 1.18 Å.

Percentile scores (ranging between 0-100) for global validation metrics of the entry are shown in the following graphic. The table shows the number of entries on which the scores are based.



Metric	Whole archive (#Entries)	Similar resolution (#Entries, resolution range(Å))
R_{free}	164625	1569 (1.20-1.16)
Clashscore	180529	1711 (1.20-1.16)
Ramachandran outliers	177936	1657 (1.20-1.16)
Sidechain outliers	177891	1657 (1.20-1.16)
RSRZ outliers	164620	1568 (1.20-1.16)

The table below summarises the geometric issues observed across the polymeric chains and their fit to the electron density. The red, orange, yellow and green segments of the lower bar indicate the fraction of residues that contain outliers for ≥ 3 , 2, 1 and 0 types of geometric quality criteria respectively. A grey segment represents the fraction of residues that are not modelled. The numeric value for each fraction is indicated below the corresponding segment, with a dot representing fractions $\leq 5\%$. The upper red bar (where present) indicates the fraction of residues that have poor fit to the electron density. The numeric value is given above the bar.

Mol	Chain	Length	Quality of chain
1	AAA	129	

The following table lists non-polymeric compounds, carbohydrate monomers and non-standard residues in protein, DNA, RNA chains that are outliers for geometric or electron-density-fit criteria:

Mol	Type	Chain	Res	Chirality	Geometry	Clashes	Electron density
3	ACT	AAA	203	-	-	X	-

2 Entry composition [i](#)

There are 6 unique types of molecules in this entry. The entry contains 1258 atoms, of which 0 are hydrogens and 0 are deuteriums.

In the tables below, the ZeroOcc column contains the number of atoms modelled with zero occupancy, the AltConf column contains the number of residues with at least one atom in alternate conformation and the Trace column contains the number of residues modelled with at most 2 atoms.

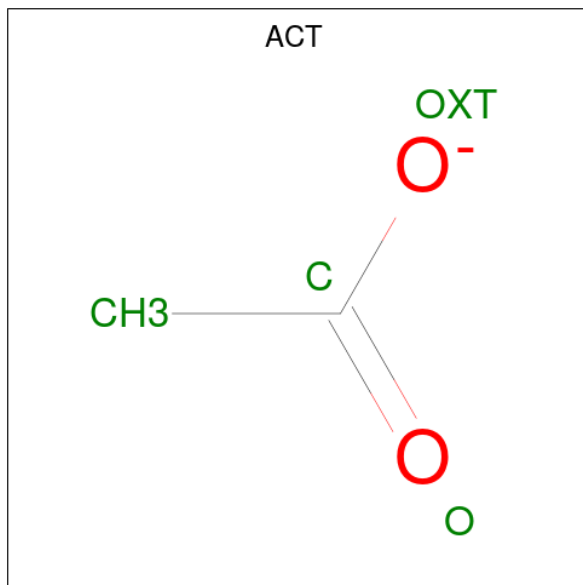
- Molecule 1 is a protein called Lysozyme C.

Mol	Chain	Residues	Atoms					ZeroOcc	AltConf	Trace
			Total	C	N	O	S			
1	AAA	129	1045	639	203	193	10	0	8	0

- Molecule 2 is SODIUM ION (three-letter code: NA) (formula: Na).

Mol	Chain	Residues	Atoms		ZeroOcc	AltConf
			Total	Na		
2	AAA	1	1	1	0	0

- Molecule 3 is ACETATE ION (three-letter code: ACT) (formula: C₂H₃O₂).

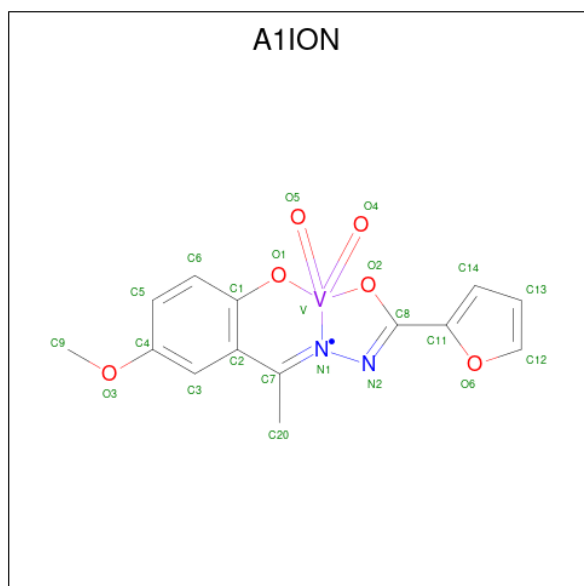


Mol	Chain	Residues	Atoms			ZeroOcc	AltConf
			Total	C	O		
3	AAA	1	4	2	2	0	0
3	AAA	1	4	2	2	0	0

- Molecule 4 is CHLORIDE ION (three-letter code: CL) (formula: Cl).

Mol	Chain	Residues	Atoms	ZeroOcc	AltConf
4	AAA	3	Total Cl 3 3	0	0

- Molecule 5 is dioxidovanadium(V) complex with (E)-N'-(1-(2-hydroxy-5-methoxyphenyl)ethylidene)furan-2-carbohydrazide (three-letter code: A1ION) (formula: C₁₄H₁₂N₂O₆V) (labeled as "Ligand of Interest" by depositor).



Mol	Chain	Residues	Atoms	ZeroOcc	AltConf
5	AAA	1	Total C N O V 23 14 2 6 1	0	0
5	AAA	1	Total C N O V 23 14 2 6 1	0	0


- Molecule 6 is water.

Mol	Chain	Residues	Atoms	ZeroOcc	AltConf
6	AAA	147	Total O 155 155	0	10

3 Residue-property plots [i](#)

These plots are drawn for all protein, RNA, DNA and oligosaccharide chains in the entry. The first graphic for a chain summarises the proportions of the various outlier classes displayed in the second graphic. The second graphic shows the sequence view annotated by issues in geometry and electron density. Residues are color-coded according to the number of geometric quality criteria for which they contain at least one outlier: green = 0, yellow = 1, orange = 2 and red = 3 or more. A red dot above a residue indicates a poor fit to the electron density ($RSRZ > 2$). Stretches of 2 or more consecutive residues without any outlier are shown as a green connector. Residues present in the sample, but not in the model, are shown in grey.

- Molecule 1: Lysozyme C

Chain AAA:  5% 84% 15%



4 Data and refinement statistics

Property	Value	Source
Space group	P 43 21 2	Depositor
Cell constants a, b, c, α , β , γ	76.67Å 76.67Å 36.80Å 90.00° 90.00° 90.00°	Depositor
Resolution (Å)	38.34 – 1.18 38.34 – 1.18	Depositor EDS
% Data completeness (in resolution range)	83.8 (38.34-1.18) 83.8 (38.34-1.18)	Depositor EDS
R_{merge}	(Not available)	Depositor
R_{sym}	(Not available)	Depositor
$\langle I/\sigma(I) \rangle$ ¹	1.63 (at 1.18Å)	Xtrriage
Refinement program	REFMAC 5.8.0267	Depositor
R, R_{free}	0.159 , 0.221 0.168 , 0.222	Depositor DCC
R_{free} test set	1846 reflections (5.13%)	wwPDB-VP
Wilson B-factor (Å ²)	15.5	Xtrriage
Anisotropy	0.162	Xtrriage
Bulk solvent k_{sol} (e/Å ³), B_{sol} (Å ²)	0.35 , 42.7	EDS
L-test for twinning ²	$\langle L \rangle = 0.46$, $\langle L^2 \rangle = 0.29$	Xtrriage
Estimated twinning fraction	No twinning to report.	Xtrriage
F_o, F_c correlation	0.97	EDS
Total number of atoms	1258	wwPDB-VP
Average B, all atoms (Å ²)	24.0	wwPDB-VP

Xtrriage's analysis on translational NCS is as follows: *The largest off-origin peak in the Patterson function is 5.35% of the height of the origin peak. No significant pseudotranslation is detected.*

¹Intensities estimated from amplitudes.

²Theoretical values of $\langle |L| \rangle$, $\langle L^2 \rangle$ for acentric reflections are 0.5, 0.333 respectively for untwinned datasets, and 0.375, 0.2 for perfectly twinned datasets.

5 Model quality [i](#)

5.1 Standard geometry [i](#)

Bond lengths and bond angles in the following residue types are not validated in this section: CL, NA, A1ION, ACT

The Z score for a bond length (or angle) is the number of standard deviations the observed value is removed from the expected value. A bond length (or angle) with $|Z| > 5$ is considered an outlier worth inspection. RMSZ is the root-mean-square of all Z scores of the bond lengths (or angles).

Mol	Chain	Bond lengths		Bond angles	
		RMSZ	# Z >5	RMSZ	# Z >5
1	AAA	0.85	0/1084	1.03	0/1463

There are no bond length outliers.

There are no bond angle outliers.

There are no chirality outliers.

There are no planarity outliers.

5.2 Too-close contacts [i](#)

In the following table, the Non-H and H(model) columns list the number of non-hydrogen atoms and hydrogen atoms in the chain respectively. The H(added) column lists the number of hydrogen atoms added and optimized by MolProbity. The Clashes column lists the number of clashes within the asymmetric unit, whereas Symm-Clashes lists symmetry-related clashes.

Mol	Chain	Non-H	H(model)	H(added)	Clashes	Symm-Clashes
1	AAA	1045	0	1003	22	1
2	AAA	1	0	0	0	0
3	AAA	8	0	6	8	0
4	AAA	3	0	0	0	0
5	AAA	46	0	0	0	0
6	AAA	155	0	0	6	2
All	All	1258	0	1009	22	3

The all-atom clashscore is defined as the number of clashes found per 1000 atoms (including hydrogen atoms). The all-atom clashscore for this structure is 10.

All (22) close contacts within the same asymmetric unit are listed below, sorted by their clash magnitude.

Atom-1	Atom-2	Interatomic distance (Å)	Clash overlap (Å)
1:AAA:121:GLN:HA	3:AAA:203:ACT:CH3	1.82	1.09
1:AAA:121:GLN:HA	3:AAA:203:ACT:H3	1.46	0.96
1:AAA:121:GLN:HA	3:AAA:203:ACT:H2	1.71	0.73
1:AAA:26:GLY:HA3	3:AAA:203:ACT:H2	1.72	0.70
1:AAA:46:ASN:OD1	1:AAA:59[A]:ASN:ND2	2.26	0.68
1:AAA:14[A]:ARG:HD3	6:AAA:303:HOH:O	1.97	0.64
1:AAA:26:GLY:HA3	3:AAA:203:ACT:CH3	2.29	0.61
1:AAA:124:ILE:HG12	3:AAA:203:ACT:H3	1.81	0.61
1:AAA:84:LEU:O	6:AAA:340[B]:HOH:O	2.17	0.59
1:AAA:109[A]:VAL:HG23	6:AAA:355:HOH:O	2.01	0.58
1:AAA:15:HIS:HB3	1:AAA:92:VAL:HG11	1.85	0.57
1:AAA:127:CYS:HB2	1:AAA:129:LEU:HD22	1.88	0.56
1:AAA:124:ILE:HG12	3:AAA:203:ACT:CH3	2.36	0.55
1:AAA:21:ARG:CZ	6:AAA:307:HOH:O	2.55	0.55
1:AAA:59[A]:ASN:OD1	1:AAA:61:ARG:HB3	2.07	0.54
1:AAA:78:ILE:CD1	1:AAA:83:LEU:HD21	2.38	0.54
1:AAA:112:ARG:HD2	6:AAA:302:HOH:O	2.09	0.53
1:AAA:121:GLN:HA	3:AAA:203:ACT:C	2.40	0.50
1:AAA:33:LYS:HG2	1:AAA:123:TRP:CH2	2.51	0.46
1:AAA:59[A]:ASN:OD1	1:AAA:61:ARG:CB	2.66	0.42
1:AAA:55[B]:ILE:HD12	1:AAA:55[B]:ILE:HA	1.87	0.40
1:AAA:21:ARG:NE	6:AAA:307:HOH:O	2.55	0.40

All (3) symmetry-related close contacts are listed below. The label for Atom-2 includes the symmetry operator and encoded unit-cell translations to be applied.

Atom-1	Atom-2	Interatomic distance (Å)	Clash overlap (Å)
6:AAA:321:HOH:O	6:AAA:363:HOH:O[7_555]	2.04	0.16
1:AAA:129:LEU:O	1:AAA:129:LEU:O[8_554]	2.05	0.15
6:AAA:402:HOH:O	6:AAA:428:HOH:O[4_545]	2.18	0.02

5.3 Torsion angles [i](#)

5.3.1 Protein backbone [i](#)

In the following table, the Percentiles column shows the percent Ramachandran outliers of the chain as a percentile score with respect to all X-ray entries followed by that with respect to entries of similar resolution.

The Analysed column shows the number of residues for which the backbone conformation was analysed, and the total number of residues.

Mol	Chain	Analysed	Favoured	Allowed	Outliers	Percentiles	
1	AAA	134/129 (104%)	132 (98%)	2 (2%)	0	100	100

There are no Ramachandran outliers to report.

5.3.2 Protein sidechains [i](#)

In the following table, the Percentiles column shows the percent sidechain outliers of the chain as a percentile score with respect to all X-ray entries followed by that with respect to entries of similar resolution.

The Analysed column shows the number of residues for which the sidechain conformation was analysed, and the total number of residues.

Mol	Chain	Analysed	Rotameric	Outliers	Percentiles	
1	AAA	113/105 (108%)	110 (97%)	3 (3%)	40	7

All (3) residues with a non-rotameric sidechain are listed below:

Mol	Chain	Res	Type
1	AAA	21	ARG
1	AAA	125	ARG
1	AAA	129	LEU

Sometimes sidechains can be flipped to improve hydrogen bonding and reduce clashes. There are no such sidechains identified.

5.3.3 RNA [i](#)

There are no RNA molecules in this entry.

5.4 Non-standard residues in protein, DNA, RNA chains [i](#)

There are no non-standard protein/DNA/RNA residues in this entry.

5.5 Carbohydrates [i](#)

There are no oligosaccharides in this entry.

5.6 Ligand geometry

Of 8 ligands modelled in this entry, 4 are monoatomic - leaving 4 for Mogul analysis.

In the following table, the Counts columns list the number of bonds (or angles) for which Mogul statistics could be retrieved, the number of bonds (or angles) that are observed in the model and the number of bonds (or angles) that are defined in the Chemical Component Dictionary. The Link column lists molecule types, if any, to which the group is linked. The Z score for a bond length (or angle) is the number of standard deviations the observed value is removed from the expected value. A bond length (or angle) with $|Z| > 2$ is considered an outlier worth inspection. RMSZ is the root-mean-square of all Z scores of the bond lengths (or angles).

Mol	Type	Chain	Res	Link	Bond lengths			Bond angles		
					Counts	RMSZ	# Z > 2	Counts	RMSZ	# Z > 2
5	A1ION	AAA	207	-	21,26,26	1.52	2 (9%)	21,42,42	4.34	14 (66%)
5	A1ION	AAA	208	-	21,26,26	1.58	3 (14%)	21,42,42	2.71	8 (38%)
3	ACT	AAA	202	-	3,3,3	0.86	0	3,3,3	0.88	0
3	ACT	AAA	203	-	3,3,3	3.19	1 (33%)	3,3,3	0.51	0

In the following table, the Chirals column lists the number of chiral outliers, the number of chiral centers analysed, the number of these observed in the model and the number defined in the Chemical Component Dictionary. Similar counts are reported in the Torsion and Rings columns. '-' means no outliers of that kind were identified.

Mol	Type	Chain	Res	Link	Chirals	Torsions	Rings
5	A1ION	AAA	207	-	-	0/2/38/38	0/4/4/4
5	A1ION	AAA	208	-	-	0/2/38/38	0/4/4/4

All (6) bond length outliers are listed below:

Mol	Chain	Res	Type	Atoms	Z	Observed(Å)	Ideal(Å)
3	AAA	203	ACT	OXT-C	-5.42	1.04	1.30
5	AAA	207	A1ION	C20-C7	4.91	1.60	1.50
5	AAA	208	A1ION	C20-C7	4.78	1.60	1.50
5	AAA	207	A1ION	C13-C14	2.40	1.47	1.39
5	AAA	208	A1ION	C13-C14	2.35	1.47	1.39
5	AAA	208	A1ION	C6-C1	2.06	1.43	1.39

All (22) bond angle outliers are listed below:

Mol	Chain	Res	Type	Atoms	Z	Observed(°)	Ideal(°)
5	AAA	207	A1ION	C2-C7-N1	9.75	129.15	119.79
5	AAA	207	A1ION	O1-C1-C6	-7.85	110.80	118.82
5	AAA	208	A1ION	C11-C8-N2	-7.54	119.58	127.70

Continued on next page...

Continued from previous page...

Mol	Chain	Res	Type	Atoms	Z	Observed(°)	Ideal(°)
5	AAA	207	A1ION	C3-C2-C7	6.99	128.30	119.17
5	AAA	207	A1ION	O2-C8-C11	-5.93	111.55	118.67
5	AAA	207	A1ION	C11-C8-N2	-5.45	121.83	127.70
5	AAA	207	A1ION	C6-C5-C4	5.15	126.03	119.73
5	AAA	207	A1ION	C1-C2-C7	-5.13	113.84	122.68
5	AAA	208	A1ION	C2-C7-N1	4.77	124.37	119.79
5	AAA	208	A1ION	C9-O3-C4	4.26	126.75	117.51
5	AAA	208	A1ION	C6-C5-C4	4.16	124.82	119.73
5	AAA	207	A1ION	C20-C7-C2	-3.80	112.04	118.73
5	AAA	207	A1ION	O2-C8-N2	3.23	126.61	123.26
5	AAA	207	A1ION	C7-N1-N2	3.16	119.55	116.15
5	AAA	207	A1ION	O3-C4-C3	2.96	134.11	119.94
5	AAA	207	A1ION	C5-C6-C1	-2.84	114.65	120.06
5	AAA	207	A1ION	C5-C4-C3	-2.60	116.95	120.53
5	AAA	208	A1ION	C7-N1-N2	-2.56	113.40	116.15
5	AAA	208	A1ION	O2-C8-C11	-2.55	115.61	118.67
5	AAA	207	A1ION	O3-C4-C5	-2.27	108.94	119.82
5	AAA	208	A1ION	C5-C6-C1	-2.17	115.92	120.06
5	AAA	208	A1ION	O1-C1-C6	-2.15	116.62	118.82

There are no chirality outliers.

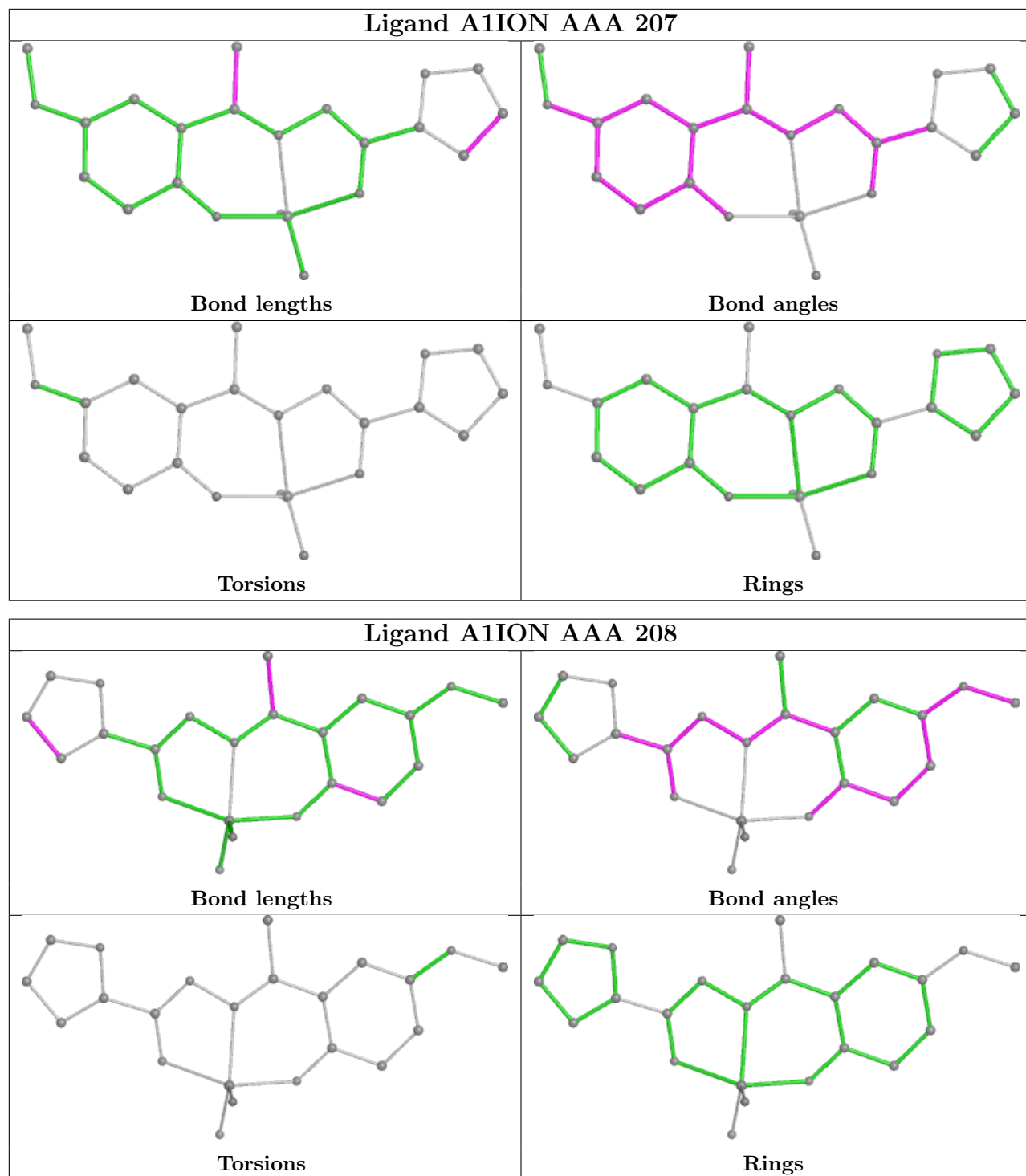
There are no torsion outliers.

There are no ring outliers.

1 monomer is involved in 8 short contacts:

Mol	Chain	Res	Type	Clashes	Symm-Clashes
3	AAA	203	ACT	8	0

The following is a two-dimensional graphical depiction of Mogul quality analysis of bond lengths, bond angles, torsion angles, and ring geometry for all instances of the Ligand of Interest. In addition, ligands with molecular weight > 250 and outliers as shown on the validation Tables will also be included. For torsion angles, if less than 5% of the Mogul distribution of torsion angles is within 10 degrees of the torsion angle in question, then that torsion angle is considered an outlier. Any bond that is central to one or more torsion angles identified as an outlier by Mogul will be highlighted in the graph. For rings, the root-mean-square deviation (RMSD) between the ring in question and similar rings identified by Mogul is calculated over all ring torsion angles. If the average RMSD is greater than 60 degrees and the minimal RMSD between the ring in question and any Mogul-identified rings is also greater than 60 degrees, then that ring is considered an outlier. The outliers are highlighted in purple. The color gray indicates Mogul did not find sufficient equivalents in the CSD to analyse the geometry.



5.7 Other polymers [\(i\)](#)

There are no such residues in this entry.

5.8 Polymer linkage issues

There are no chain breaks in this entry.

6 Fit of model and data [i](#)

6.1 Protein, DNA and RNA chains [i](#)

In the following table, the column labelled '#RSRZ > 2' contains the number (and percentage) of RSRZ outliers, followed by percent RSRZ outliers for the chain as percentile scores relative to all X-ray entries and entries of similar resolution. The OWAB column contains the minimum, median, 95th percentile and maximum values of the occupancy-weighted average B-factor per residue. The column labelled 'Q < 0.9' lists the number of (and percentage) of residues with an average occupancy less than 0.9.

Mol	Chain	Analysed	<RSRZ>	#RSRZ>2	OWAB(Å ²)	Q<0.9
1	AAA	129/129 (100%)	0.50	7 (5%) 32 35	7, 18, 35, 62	8 (6%)

All (7) RSRZ outliers are listed below:

Mol	Chain	Res	Type	RSRZ
1	AAA	129	LEU	4.7
1	AAA	125	ARG	2.5
1	AAA	124	ILE	2.3
1	AAA	78	ILE	2.1
1	AAA	126	GLY	2.1
1	AAA	6	CYS	2.1
1	AAA	128	ARG	2.1

6.2 Non-standard residues in protein, DNA, RNA chains [i](#)

There are no non-standard protein/DNA/RNA residues in this entry.

6.3 Carbohydrates [i](#)

There are no monosaccharides in this entry.

6.4 Ligands [i](#)

In the following table, the Atoms column lists the number of modelled atoms in the group and the number defined in the chemical component dictionary. The B-factors column lists the minimum, median, 95th percentile and maximum values of B factors of atoms in the group. The column labelled 'Q < 0.9' lists the number of atoms with occupancy less than 0.9.

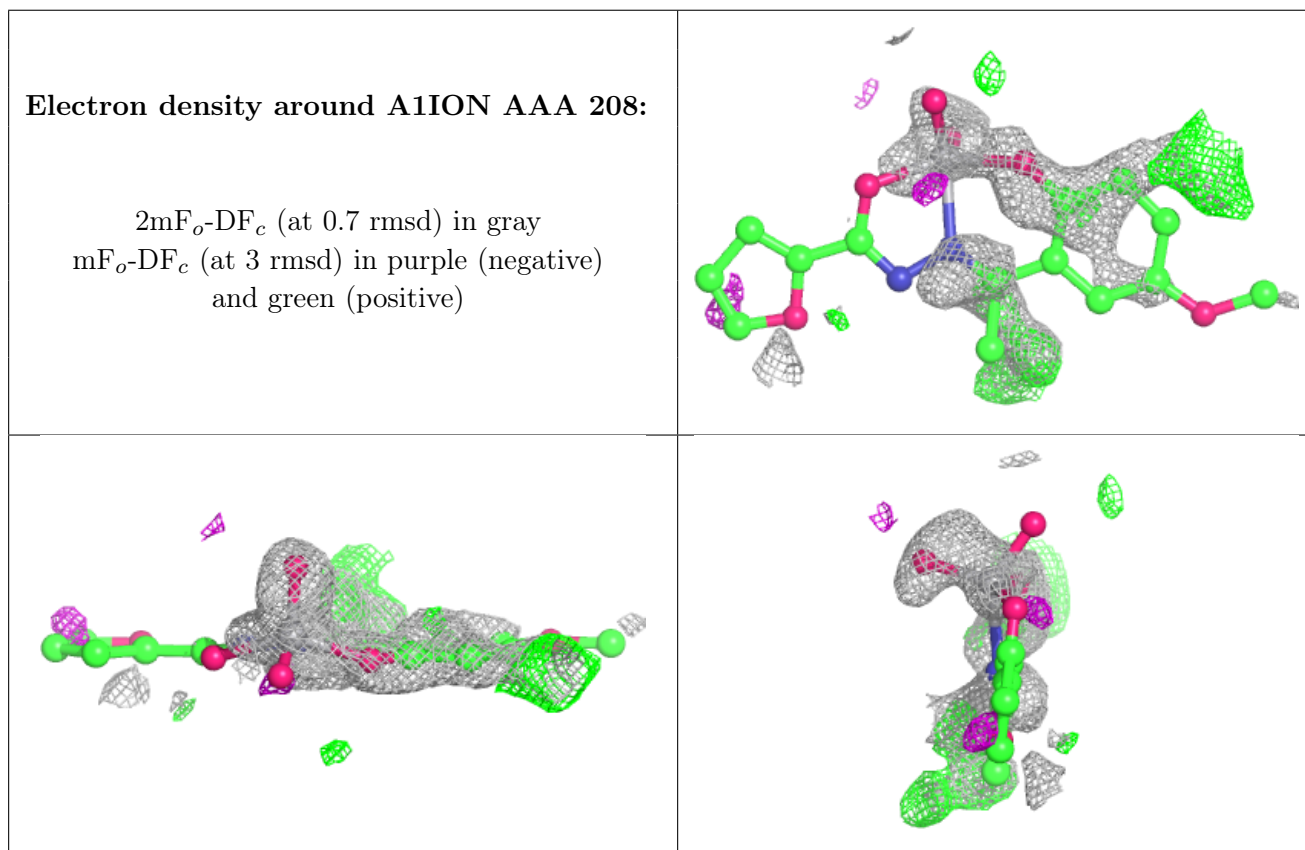
Mol	Type	Chain	Res	Atoms	RSCC	RSR	B-factors(Å ²)	Q<0.9
5	AIION	AAA	208	23/23	0.65	0.28	39,71,93,101	23

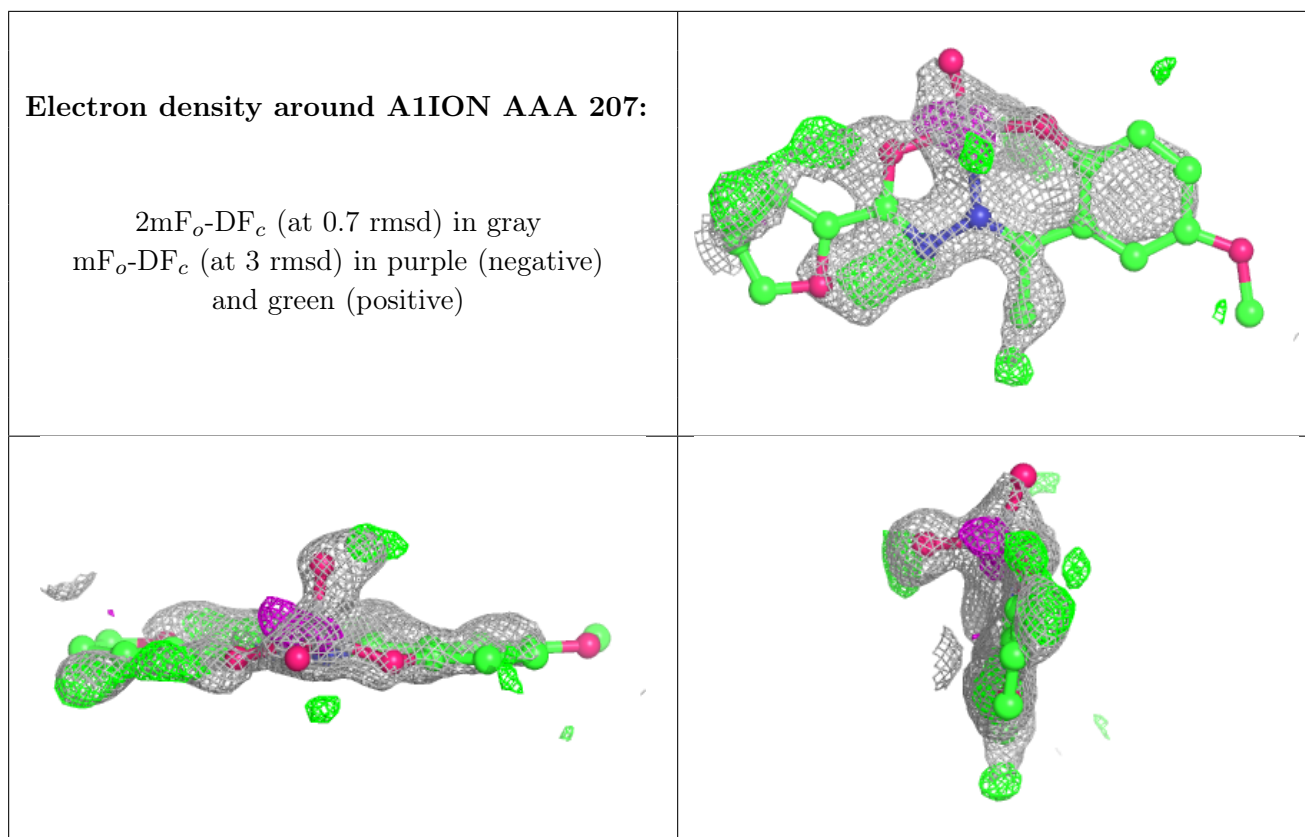
Continued on next page...

Continued from previous page...

Mol	Type	Chain	Res	Atoms	RSCC	RSR	B-factors(\AA^2)	Q<0.9
5	A1ION	AAA	207	23/23	0.71	0.23	36,47,59,65	23
3	ACT	AAA	202	4/4	0.93	0.09	23,32,35,40	0
3	ACT	AAA	203	4/4	0.94	0.09	17,22,32,36	0
4	CL	AAA	206	1/1	0.98	0.05	23,23,23,23	1
4	CL	AAA	204	1/1	0.99	0.07	22,22,22,22	0
2	NA	AAA	201	1/1	0.99	0.09	20,20,20,20	1
4	CL	AAA	205	1/1	1.00	0.02	20,20,20,20	1

The following is a graphical depiction of the model fit to experimental electron density of all instances of the Ligand of Interest. In addition, ligands with molecular weight > 250 and outliers as shown on the geometry validation Tables will also be included. Each fit is shown from different orientation to approximate a three-dimensional view.





6.5 Other polymers [i](#)

There are no such residues in this entry.