



Full wwPDB X-ray Structure Validation Report ⓘ

Jan 30, 2025 – 12:30 pm GMT

PDB ID : 9GOZ
Title : 4-Allyl syringol oxidase from *Streptomyces cavernae*: complex with eugenol
Authors : Mattevi, A.; Alvigini, L.
Deposited on : 2024-09-06
Resolution : 1.40 Å(reported)

This is a Full wwPDB X-ray Structure Validation Report for a publicly released PDB entry.

We welcome your comments at validation@mail.wwpdb.org

A user guide is available at

<https://www.wwpdb.org/validation/2017/XrayValidationReportHelp>

with specific help available everywhere you see the ⓘ symbol.

The types of validation reports are described at

<http://www.wwpdb.org/validation/2017/FAQs#types>.

The following versions of software and data (see [references ⓘ](#)) were used in the production of this report:

MolProbity : 4.02b-467
Mogul : 1.8.4, CSD as541be (2020)
Xtriage (Phenix) : 1.13
EDS : 3.0
buster-report : 1.1.7 (2018)
Percentile statistics : 20231227.v01 (using entries in the PDB archive December 27th 2023)
CCP4 : 9.0.003 (Gargrove)
Density-Fitness : 1.0.11
Ideal geometry (proteins) : Engh & Huber (2001)
Ideal geometry (DNA, RNA) : Parkinson et al. (1996)
Validation Pipeline (wwPDB-VP) : 2.40

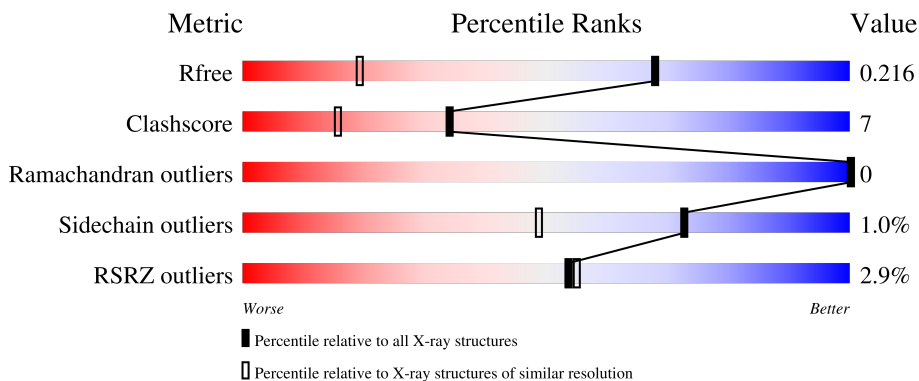
1 Overall quality at a glance

The following experimental techniques were used to determine the structure:

X-RAY DIFFRACTION

The reported resolution of this entry is 1.40 Å.

Percentile scores (ranging between 0-100) for global validation metrics of the entry are shown in the following graphic. The table shows the number of entries on which the scores are based.



Metric	Whole archive (#Entries)	Similar resolution (#Entries, resolution range(Å))
R_{free}	164625	2247 (1.40-1.40)
Clashscore	180529	2446 (1.40-1.40)
Ramachandran outliers	177936	2398 (1.40-1.40)
Sidechain outliers	177891	2397 (1.40-1.40)
RSRZ outliers	164620	2246 (1.40-1.40)

The table below summarises the geometric issues observed across the polymeric chains and their fit to the electron density. The red, orange, yellow and green segments of the lower bar indicate the fraction of residues that contain outliers for ≥ 3 , 2, 1 and 0 types of geometric quality criteria respectively. A grey segment represents the fraction of residues that are not modelled. The numeric value for each fraction is indicated below the corresponding segment, with a dot representing fractions $\leq 5\%$. The upper red bar (where present) indicates the fraction of residues that have poor fit to the electron density. The numeric value is given above the bar.

Mol	Chain	Length	Quality of chain
1	A	554	
1	B	554	

The following table lists non-polymeric compounds, carbohydrate monomers and non-standard residues in protein, DNA, RNA chains that are outliers for geometric or electron-density-fit criteria:

Mol	Type	Chain	Res	Chirality	Geometry	Clashes	Electron density
5	P4G	A	604	-	-	X	-

2 Entry composition i

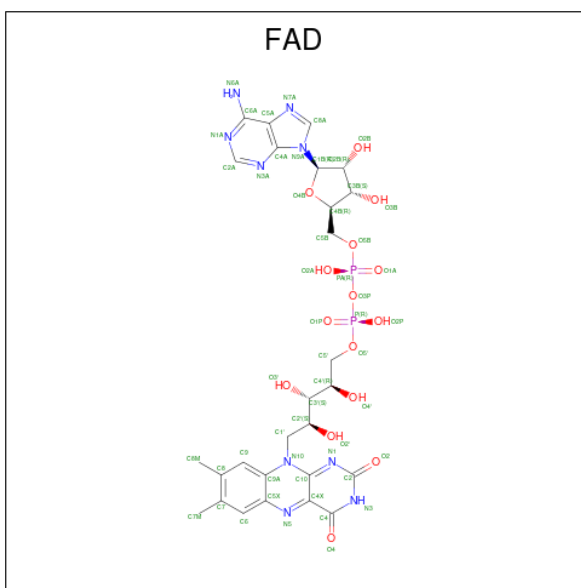
There are 7 unique types of molecules in this entry. The entry contains 9692 atoms, of which 0 are hydrogens and 0 are deuteriums.

In the tables below, the ZeroOcc column contains the number of atoms modelled with zero occupancy, the AltConf column contains the number of residues with at least one atom in alternate conformation and the Trace column contains the number of residues modelled with at most 2 atoms.

- Molecule 1 is a protein called 4-allyl syringol oxidase from *Streptomyces cavernae*.

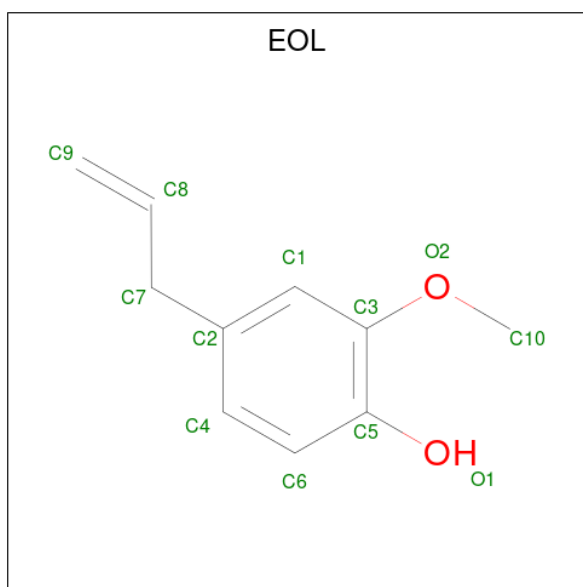
Mol	Chain	Residues	Atoms					ZeroOcc	AltConf	Trace
			Total	C	N	O	S			
1	A	524	Total 4068	2581	706	759	22	0	2	0
1	B	524	Total 4055	2572	704	757	22	0	0	0

- Molecule 2 is FLAVIN-ADENINE DINUCLEOTIDE (three-letter code: FAD) (formula: $C_{27}H_{33}N_9O_{15}P_2$).



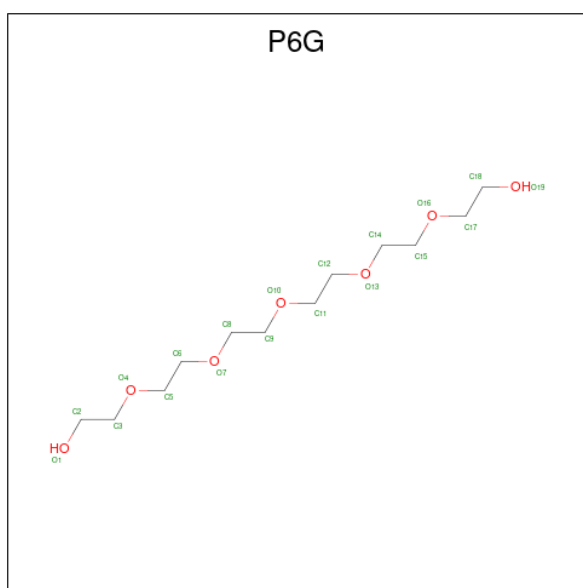
Mol	Chain	Residues	Atoms					ZeroOcc	AltConf
			Total	C	N	O	P		
2	A	1	Total 53	27	9	15	2	0	0
2	B	1	Total 53	27	9	15	2	0	0

- Molecule 3 is 2-methoxy-4-(prop-2-en-1-yl)phenol (three-letter code: EOL) (formula: $C_{10}H_{12}O_2$) (labeled as "Ligand of Interest" by depositor).



Mol	Chain	Residues	Atoms		ZeroOcc	AltConf	
3	A	1	Total	C	O	0	0
			12	10	2		
3	B	1	Total	C	O	0	0
			12	10	2		

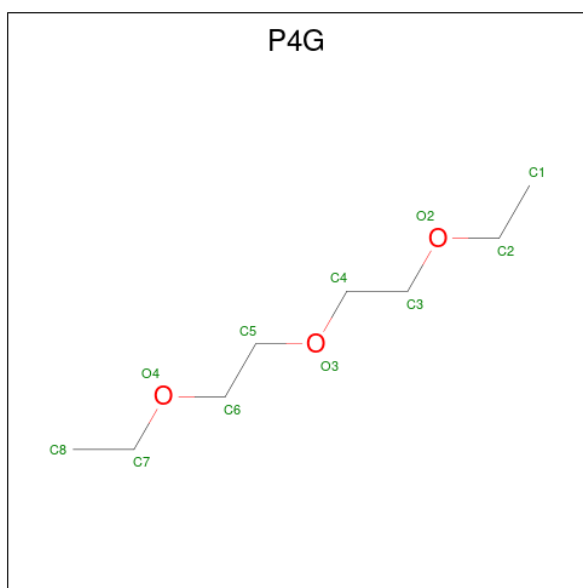
- Molecule 4 is HEXAETHYLENE GLYCOL (three-letter code: P6G) (formula: $C_{12}H_{26}O_7$).



Mol	Chain	Residues	Atoms		ZeroOcc	AltConf	
4	A	1	Total	C	O	0	0
			19	12	7		

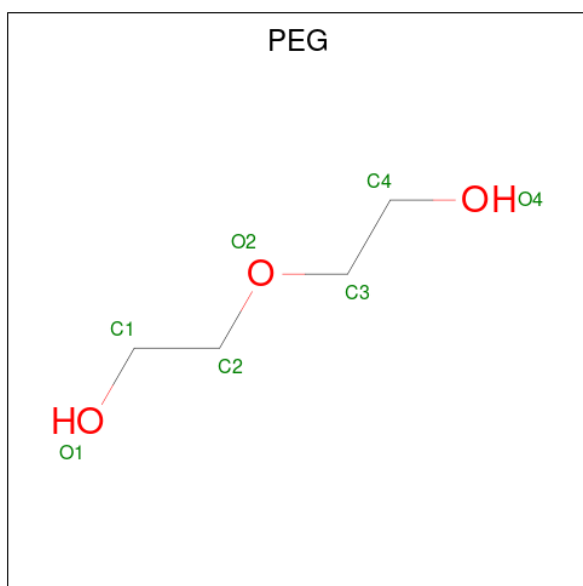
- Molecule 5 is 1-ETHOXY-2-(2-ETHOXYETHOXY)ETHANE (three-letter code: P4G)

(formula: C₈H₁₈O₃).



Mol	Chain	Residues	Atoms			ZeroOcc	AltConf
5	A	1	Total	C	O	0	0
			11	8	3		
5	B	1	Total	C	O	0	0
			11	8	3		

- Molecule 6 is DI(HYDROXYETHYL)ETHER (three-letter code: PEG) (formula: C₄H₁₀O₃).



Mol	Chain	Residues	Atoms			ZeroOcc	AltConf
6	B	1	Total	C	O	0	0
			7	4	3		

Continued on next page...

Continued from previous page...

Mol	Chain	Residues	Atoms			ZeroOcc	AltConf
6	B	1	Total	C	O	0	0
			7	4	3		
6	B	1	Total	C	O	0	0
			7	4	3		

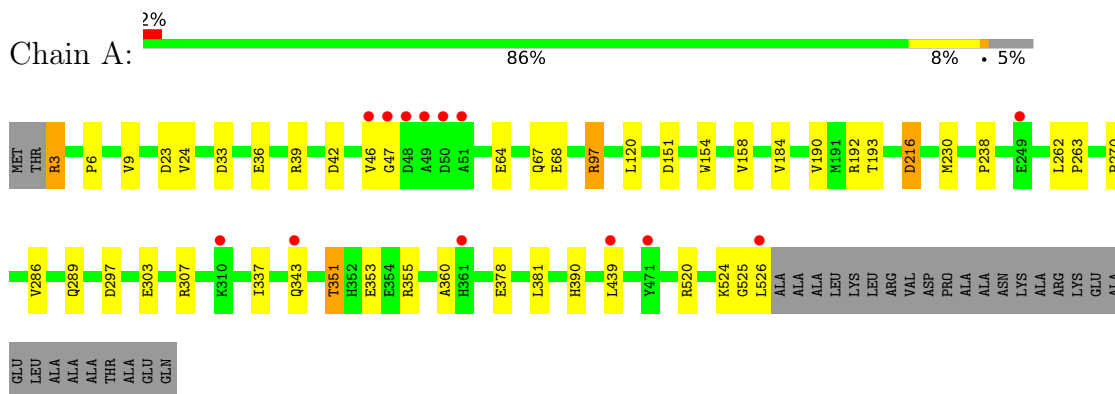
- Molecule 7 is water.

Mol	Chain	Residues	Atoms		ZeroOcc	AltConf
7	A	719	Total	O	0	0
			719	719		
7	B	658	Total	O	0	0
			658	658		

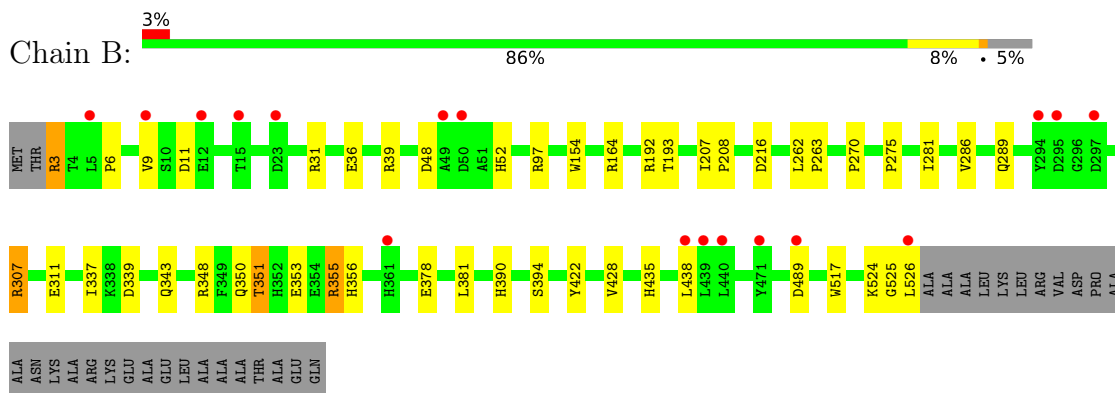
3 Residue-property plots [i](#)

These plots are drawn for all protein, RNA, DNA and oligosaccharide chains in the entry. The first graphic for a chain summarises the proportions of the various outlier classes displayed in the second graphic. The second graphic shows the sequence view annotated by issues in geometry and electron density. Residues are color-coded according to the number of geometric quality criteria for which they contain at least one outlier: green = 0, yellow = 1, orange = 2 and red = 3 or more. A red dot above a residue indicates a poor fit to the electron density ($RSRZ > 2$). Stretches of 2 or more consecutive residues without any outlier are shown as a green connector. Residues present in the sample, but not in the model, are shown in grey.

- Molecule 1: 4-allyl syringol oxidase from *Streptomyces cavernae*



- Molecule 1: 4-allyl syringol oxidase from *Streptomyces cavernae*



4 Data and refinement statistics i

Property	Value	Source
Space group	P 65	Depositor
Cell constants a, b, c, α , β , γ	83.26Å 83.26Å 297.52Å 90.00° 90.00° 120.00°	Depositor
Resolution (Å)	40.86 – 1.40 40.86 – 1.40	Depositor EDS
% Data completeness (in resolution range)	100.0 (40.86-1.40) 100.0 (40.86-1.40)	Depositor EDS
R_{merge}	0.12	Depositor
R_{sym}	(Not available)	Depositor
$\langle I/\sigma(I) \rangle$ ¹	1.36 (at 1.40Å)	Xtrriage
Refinement program	REFMAC 5.8.0258	Depositor
R, R_{free}	0.187 , 0.216 0.188 , 0.216	Depositor DCC
R_{free} test set	11372 reflections (4.99%)	wwPDB-VP
Wilson B-factor (Å ²)	14.5	Xtrriage
Anisotropy	0.040	Xtrriage
Bulk solvent k_{sol} (e/Å ³), B_{sol} (Å ²)	0.35 , 31.8	EDS
L-test for twinning ²	$\langle L \rangle = 0.43$, $\langle L^2 \rangle = 0.26$	Xtrriage
Estimated twinning fraction	0.075 for h,-h-k,-l	Xtrriage
F_o, F_c correlation	0.96	EDS
Total number of atoms	9692	wwPDB-VP
Average B, all atoms (Å ²)	19.0	wwPDB-VP

Xtrriage's analysis on translational NCS is as follows: *The largest off-origin peak in the Patterson function is 2.46% of the height of the origin peak. No significant pseudotranslation is detected.*

¹Intensities estimated from amplitudes.

²Theoretical values of $\langle |L| \rangle$, $\langle L^2 \rangle$ for acentric reflections are 0.5, 0.333 respectively for untwinned datasets, and 0.375, 0.2 for perfectly twinned datasets.

5 Model quality [i](#)

5.1 Standard geometry [i](#)

Bond lengths and bond angles in the following residue types are not validated in this section: P6G, P4G, PEG, EOL, FAD

The Z score for a bond length (or angle) is the number of standard deviations the observed value is removed from the expected value. A bond length (or angle) with $|Z| > 5$ is considered an outlier worth inspection. RMSZ is the root-mean-square of all Z scores of the bond lengths (or angles).

Mol	Chain	Bond lengths		Bond angles	
		RMSZ	# Z >5	RMSZ	# Z >5
1	A	0.78	1/4171 (0.0%)	0.91	7/5674 (0.1%)
1	B	0.71	0/4158	0.85	2/5655 (0.0%)
All	All	0.74	1/8329 (0.0%)	0.88	9/11329 (0.1%)

Chiral center outliers are detected by calculating the chiral volume of a chiral center and verifying if the center is modelled as a planar moiety or with the opposite hand. A planarity outlier is detected by checking planarity of atoms in a peptide group, atoms in a mainchain group or atoms of a sidechain that are expected to be planar.

Mol	Chain	#Chirality outliers	#Planarity outliers
1	A	0	1

All (1) bond length outliers are listed below:

Mol	Chain	Res	Type	Atoms	Z	Observed(Å)	Ideal(Å)
1	A	64	GLU	CD-OE1	6.97	1.33	1.25

All (9) bond angle outliers are listed below:

Mol	Chain	Res	Type	Atoms	Z	Observed(°)	Ideal(°)
1	A	46	VAL	N-CA-C	-7.69	90.23	111.00
1	A	46	VAL	C-N-CA	-7.24	107.11	122.30
1	B	164	ARG	NE-CZ-NH1	6.20	123.40	120.30
1	A	42	ASP	CB-CG-OD2	-5.62	113.25	118.30
1	A	520	ARG	NE-CZ-NH2	-5.53	117.54	120.30
1	B	192	ARG	NE-CZ-NH2	-5.41	117.59	120.30
1	A	3	ARG	NE-CZ-NH2	-5.38	117.61	120.30
1	A	192	ARG	NE-CZ-NH2	-5.10	117.75	120.30
1	A	97	ARG	NE-CZ-NH2	-5.03	117.79	120.30

There are no chirality outliers.

All (1) planarity outliers are listed below:

Mol	Chain	Res	Type	Group
1	A	216	ASP	Sidechain

5.2 Too-close contacts [i](#)

In the following table, the Non-H and H(model) columns list the number of non-hydrogen atoms and hydrogen atoms in the chain respectively. The H(added) column lists the number of hydrogen atoms added and optimized by MolProbity. The Clashes column lists the number of clashes within the asymmetric unit, whereas Symm-Clashes lists symmetry-related clashes.

Mol	Chain	Non-H	H(model)	H(added)	Clashes	Symm-Clashes
1	A	4068	0	3953	56	0
1	B	4055	0	3939	61	0
2	A	53	0	30	1	0
2	B	53	0	30	6	0
3	A	12	0	11	2	0
3	B	12	0	11	0	0
4	A	19	0	26	2	0
5	A	11	0	18	7	0
5	B	11	0	18	3	0
6	B	21	0	30	0	0
7	A	719	0	0	18	3
7	B	658	0	0	20	2
All	All	9692	0	8066	122	3

The all-atom clashscore is defined as the number of clashes found per 1000 atoms (including hydrogen atoms). The all-atom clashscore for this structure is 7.

All (122) close contacts within the same asymmetric unit are listed below, sorted by their clash magnitude.

Atom-1	Atom-2	Interatomic distance (Å)	Clash overlap (Å)
1:B:390:HIS:NE2	2:B:601:FAD:C8M	1.70	1.54
1:A:33:ASP:OD2	1:A:36:GLU:HG3	1.03	1.19
1:A:33:ASP:OD2	1:A:36:GLU:CG	1.98	1.10
1:A:97:ARG:HH12	1:A:526:LEU:HD21	1.17	1.09
1:B:428:VAL:HB	7:B:1164:HOH:O	0.90	1.06
1:B:48:ASP:CB	7:B:1148:HOH:O	2.06	1.04
1:B:97:ARG:HH22	1:B:526:LEU:HD21	1.18	1.04
1:A:526:LEU:HD22	7:A:1281:HOH:O	1.55	1.02

Continued on next page...

Continued from previous page...

Atom-1	Atom-2	Interatomic distance (Å)	Clash overlap (Å)
1:A:97:ARG:HH22	1:A:526:LEU:HD11	1.19	1.02
1:A:526:LEU:HD23	7:A:1141:HOH:O	1.59	1.01
1:A:33:ASP:CG	1:A:36:GLU:HG3	1.87	0.94
1:A:36:GLU:HB3	7:A:1149:HOH:O	1.66	0.93
1:B:526:LEU:HD12	7:B:1056:HOH:O	1.69	0.93
1:B:351:THR:HG21	7:B:928:HOH:O	1.69	0.93
1:B:97:ARG:NH1	1:B:526:LEU:HD11	1.84	0.92
1:A:184:VAL:HG22	1:A:190:VAL:HG12	1.52	0.92
1:A:39:ARG:HH22	5:A:604:P4G:C7	1.85	0.90
1:A:47:GLY:HA2	7:A:776:HOH:O	1.73	0.88
1:B:275:PRO:HG2	1:B:428:VAL:CG2	2.03	0.88
1:A:39:ARG:NH2	5:A:604:P4G:C7	2.37	0.87
1:B:275:PRO:HG2	1:B:428:VAL:HG22	1.56	0.86
1:B:378:GLU:O	1:B:381:LEU:HD13	1.76	0.85
1:B:286:VAL:HG22	1:B:381:LEU:CD1	2.08	0.84
1:B:311:GLU:OE1	7:B:701:HOH:O	1.94	0.84
1:B:193:THR:HG21	1:B:216:ASP:OD1	1.78	0.83
1:A:286:VAL:HG22	1:A:381:LEU:CD1	2.08	0.83
1:B:390:HIS:NE2	2:B:601:FAD:HM81	1.92	0.83
1:B:286:VAL:HG22	1:B:381:LEU:HD11	1.61	0.82
1:A:39:ARG:NH2	5:A:604:P4G:H71	1.94	0.81
1:B:97:ARG:HH12	1:B:526:LEU:HD11	1.44	0.81
1:A:289:GLN:HG3	7:A:715:HOH:O	1.80	0.80
1:A:39:ARG:NH2	5:A:604:P4G:H72	1.96	0.80
1:A:193:THR:HG21	1:A:216:ASP:OD1	1.80	0.80
1:B:97:ARG:NH2	1:B:526:LEU:HD21	1.96	0.79
1:A:286:VAL:HG22	1:A:381:LEU:HD11	1.66	0.78
1:A:97:ARG:NH2	1:A:526:LEU:HD11	1.98	0.78
1:B:489:ASP:HB3	7:B:904:HOH:O	1.87	0.75
1:A:97:ARG:HH12	1:A:526:LEU:CD2	1.97	0.74
1:B:39:ARG:HH12	5:B:606:P4G:H51	1.51	0.74
1:A:39:ARG:HH22	5:A:604:P4G:H72	1.52	0.72
1:A:378:GLU:O	1:A:381:LEU:HD13	1.89	0.72
4:A:603:P6G:O1	7:A:701:HOH:O	2.06	0.72
5:A:604:P4G:H81	7:A:1297:HOH:O	1.89	0.72
1:A:39:ARG:HH22	5:A:604:P4G:H71	1.53	0.71
1:A:23:ASP:O	7:A:702:HOH:O	2.09	0.71
1:A:97:ARG:NH1	1:A:526:LEU:HD21	2.00	0.70
1:B:390:HIS:CD2	2:B:601:FAD:C8M	2.71	0.69
1:B:390:HIS:NE2	2:B:601:FAD:C8	2.55	0.68
1:A:526:LEU:CD2	7:A:1281:HOH:O	2.26	0.67

Continued on next page...

Continued from previous page...

Atom-1	Atom-2	Interatomic distance (Å)	Clash overlap (Å)
1:B:356:HIS:HD2	7:B:1192:HOH:O	1.80	0.65
1:A:286:VAL:HG22	1:A:381:LEU:HD12	1.77	0.65
1:B:339:ASP:HB2	7:B:809:HOH:O	1.98	0.61
1:B:348:ARG:NH2	7:B:702:HOH:O	2.10	0.61
1:A:270:PRO:HG2	1:A:337:ILE:HD11	1.82	0.60
1:A:526:LEU:HD13	7:A:1181:HOH:O	2.02	0.60
1:A:525:GLY:O	1:A:526:LEU:HB2	2.01	0.60
1:B:286:VAL:HG22	1:B:381:LEU:HD12	1.83	0.60
1:B:489:ASP:CB	7:B:904:HOH:O	2.50	0.58
3:A:602:EOL:H6	4:A:603:P6G:O19	2.04	0.57
1:B:275:PRO:CG	1:B:428:VAL:CG2	2.81	0.57
1:B:525:GLY:O	1:B:526:LEU:HB2	2.05	0.57
1:A:184:VAL:HG22	1:A:190:VAL:CG1	2.29	0.56
1:B:390:HIS:CE1	2:B:601:FAD:C8M	2.75	0.56
1:A:355:ARG:HG2	1:A:360:ALA:HB2	1.89	0.55
1:B:281:ILE:CD1	7:B:1109:HOH:O	2.54	0.54
1:B:3:ARG:NH1	1:B:11:ASP:OD1	2.40	0.54
1:B:343:GLN:HG2	7:B:1024:HOH:O	2.07	0.54
1:B:289:GLN:HG3	7:B:932:HOH:O	2.07	0.54
1:B:281:ILE:HD12	7:B:1109:HOH:O	2.08	0.53
1:B:281:ILE:HD12	1:B:422:TYR:O	2.08	0.53
1:B:31:ARG:HG2	1:B:36:GLU:HG2	1.91	0.53
1:A:351:THR:CG2	1:A:353:GLU:H	2.21	0.53
1:A:289:GLN:CG	7:A:715:HOH:O	2.48	0.52
1:B:39:ARG:NH1	5:B:606:P4G:H51	2.23	0.52
1:A:6:PRO:HD2	1:A:9[A]:VAL:CG2	2.39	0.51
1:B:6:PRO:HD2	1:B:9:VAL:CG2	2.39	0.51
1:A:351:THR:HG22	1:A:353:GLU:H	1.76	0.51
1:B:289:GLN:NE2	7:B:715:HOH:O	2.43	0.51
1:A:193:THR:CG2	1:A:216:ASP:OD1	2.56	0.50
1:B:307:ARG:HD2	7:B:1100:HOH:O	2.12	0.50
1:B:381:LEU:HD23	1:B:438:LEU:CD2	2.42	0.50
1:B:193:THR:CG2	1:B:216:ASP:OD1	2.55	0.50
1:A:33:ASP:OD1	1:A:36:GLU:OE2	2.29	0.50
1:B:351:THR:CG2	1:B:353:GLU:H	2.26	0.49
1:A:6:PRO:O	1:A:9[A]:VAL:HG22	2.13	0.48
1:A:524:LYS:HE3	7:A:755:HOH:O	2.13	0.47
1:B:526:LEU:N	1:B:526:LEU:HD22	2.30	0.47
1:B:270:PRO:HG2	1:B:337:ILE:HD11	1.96	0.47
2:B:601:FAD:O5B	2:B:601:FAD:H8A	2.14	0.47
1:B:517:TRP:CH2	1:B:526:LEU:HD13	2.50	0.46

Continued on next page...

Continued from previous page...

Atom-1	Atom-2	Interatomic distance (Å)	Clash overlap (Å)
1:A:303:GLU:CG	7:A:703:HOH:O	2.63	0.46
2:A:601:FAD:O5B	2:A:601:FAD:H8A	2.16	0.45
1:B:97:ARG:HH12	1:B:526:LEU:CD1	2.21	0.45
1:A:67:GLN:CD	1:A:190:VAL:HG13	2.37	0.45
1:B:526:LEU:N	1:B:526:LEU:CD2	2.80	0.44
1:A:120:LEU:HD23	1:B:262:LEU:HD21	1.99	0.44
1:A:526:LEU:N	1:A:526:LEU:HD12	2.32	0.44
1:B:275:PRO:HG2	1:B:428:VAL:HG23	1.95	0.44
1:B:289:GLN:CG	7:B:932:HOH:O	2.64	0.44
1:B:207:ILE:HD12	1:B:208:PRO:HD2	1.99	0.44
1:A:24:VAL:HG21	1:A:68:GLU:HG3	2.00	0.43
1:B:262:LEU:HB3	1:B:263:PRO:HD3	2.00	0.43
1:B:524:LYS:HE3	7:B:794:HOH:O	2.17	0.43
1:A:67:GLN:CG	1:A:190:VAL:HG13	2.49	0.42
1:B:381:LEU:HD23	1:B:438:LEU:HD23	2.00	0.42
1:B:52:His:CE1	7:B:1159:HOH:O	2.72	0.42
1:A:151:ASP:OD2	3:A:602:EOL:H7A	2.19	0.42
1:A:307:ARG:NH1	7:A:703:HOH:O	2.18	0.42
1:B:350:GLN:HE21	1:B:355:ARG:HG3	1.85	0.42
1:B:275:PRO:CG	1:B:428:VAL:HG23	2.49	0.42
1:A:303:GLU:HG2	7:A:703:HOH:O	2.19	0.41
1:B:394:SER:HA	1:B:435:HIS:O	2.19	0.41
1:A:6:PRO:HD2	1:A:9[A]:VAL:HG21	2.02	0.41
1:B:351:THR:HG22	1:B:353:GLU:H	1.86	0.41
1:A:390:HIS:HA	1:A:439:LEU:O	2.21	0.41
1:B:270:PRO:HG2	1:B:337:ILE:CD1	2.50	0.41
1:A:158:VAL:HG22	1:A:230:MET:HB3	2.02	0.40
1:A:297:ASP:HB2	7:A:948:HOH:O	2.20	0.40
1:A:238:PRO:HG2	7:A:904:HOH:O	2.22	0.40
1:A:343:GLN:NE2	7:A:727:HOH:O	2.54	0.40
5:B:606:P4G:H51	7:B:1124:HOH:O	2.21	0.40
1:A:262:LEU:HB3	1:A:263:PRO:HD3	2.03	0.40

All (3) symmetry-related close contacts are listed below. The label for Atom-2 includes the symmetry operator and encoded unit-cell translations to be applied.

Atom-1	Atom-2	Interatomic distance (Å)	Clash overlap (Å)
7:A:828:HOH:O	7:B:1238:HOH:O[5_555]	1.74	0.46
7:A:1040:HOH:O	7:B:702:HOH:O[1_665]	1.78	0.42
7:A:710:HOH:O	7:A:1083:HOH:O[6_554]	1.79	0.41

5.3 Torsion angles [i](#)

5.3.1 Protein backbone [i](#)

In the following table, the Percentiles column shows the percent Ramachandran outliers of the chain as a percentile score with respect to all X-ray entries followed by that with respect to entries of similar resolution.

The Analysed column shows the number of residues for which the backbone conformation was analysed, and the total number of residues.

Mol	Chain	Analysed	Favoured	Allowed	Outliers	Percentiles	
1	A	524/554 (95%)	513 (98%)	11 (2%)	0	100	100
1	B	522/554 (94%)	510 (98%)	12 (2%)	0	100	100
All	All	1046/1108 (94%)	1023 (98%)	23 (2%)	0	100	100

There are no Ramachandran outliers to report.

5.3.2 Protein sidechains [i](#)

In the following table, the Percentiles column shows the percent sidechain outliers of the chain as a percentile score with respect to all X-ray entries followed by that with respect to entries of similar resolution.

The Analysed column shows the number of residues for which the sidechain conformation was analysed, and the total number of residues.

Mol	Chain	Analysed	Rotameric	Outliers	Percentiles	
1	A	422/444 (95%)	419 (99%)	3 (1%)	81	61
1	B	420/444 (95%)	415 (99%)	5 (1%)	67	41
All	All	842/888 (95%)	834 (99%)	8 (1%)	73	49

All (8) residues with a non-rotameric sidechain are listed below:

Mol	Chain	Res	Type
1	A	3	ARG
1	A	154	TRP
1	A	351	THR
1	B	3	ARG
1	B	154	TRP
1	B	307	ARG
1	B	351	THR
1	B	355	ARG

Sometimes sidechains can be flipped to improve hydrogen bonding and reduce clashes. All (13) such sidechains are listed below:

Mol	Chain	Res	Type
1	A	52	HIS
1	A	135	HIS
1	A	250	ASN
1	A	289	GLN
1	A	328	GLN
1	A	343	GLN
1	A	356	HIS
1	B	41	HIS
1	B	52	HIS
1	B	250	ASN
1	B	289	GLN
1	B	350	GLN
1	B	356	HIS

5.3.3 RNA [i](#)

There are no RNA molecules in this entry.

5.4 Non-standard residues in protein, DNA, RNA chains [i](#)

There are no non-standard protein/DNA/RNA residues in this entry.

5.5 Carbohydrates [i](#)

There are no oligosaccharides in this entry.

5.6 Ligand geometry [i](#)

10 ligands are modelled in this entry.

In the following table, the Counts columns list the number of bonds (or angles) for which Mogul statistics could be retrieved, the number of bonds (or angles) that are observed in the model and the number of bonds (or angles) that are defined in the Chemical Component Dictionary. The Link column lists molecule types, if any, to which the group is linked. The Z score for a bond length (or angle) is the number of standard deviations the observed value is removed from the expected value. A bond length (or angle) with $|Z| > 2$ is considered an outlier worth inspection. RMSZ is the root-mean-square of all Z scores of the bond lengths (or angles).

Mol	Type	Chain	Res	Link	Bond lengths			Bond angles		
					Counts	RMSZ	# Z > 2	Counts	RMSZ	# Z > 2
2	FAD	A	601	-	53,58,58	0.64	0	68,89,89	0.87	2 (2%)
5	P4G	A	604	-	10,10,10	0.65	0	9,9,9	1.30	2 (22%)
5	P4G	B	606	-	10,10,10	0.55	0	9,9,9	1.21	1 (11%)
6	PEG	B	605	-	6,6,6	0.28	0	5,5,5	0.24	0
3	EOL	A	602	-	12,12,12	0.40	0	15,15,15	0.48	0
6	PEG	B	604	-	6,6,6	0.14	0	5,5,5	0.23	0
6	PEG	B	603	-	6,6,6	0.25	0	5,5,5	0.15	0
3	EOL	B	602	-	12,12,12	0.30	0	15,15,15	0.61	0
2	FAD	B	601	-	53,58,58	0.76	1 (1%)	68,89,89	0.85	0
4	P6G	A	603	-	18,18,18	0.62	0	17,17,17	0.77	0

In the following table, the Chirals column lists the number of chiral outliers, the number of chiral centers analysed, the number of these observed in the model and the number defined in the Chemical Component Dictionary. Similar counts are reported in the Torsion and Rings columns. '-' means no outliers of that kind were identified.

Mol	Type	Chain	Res	Link	Chirals	Torsions	Rings
2	FAD	A	601	-	-	6/30/50/50	0/6/6/6
5	P4G	A	604	-	-	4/8/8/8	-
5	P4G	B	606	-	-	3/8/8/8	-
6	PEG	B	605	-	-	4/4/4/4	-
3	EOL	A	602	-	-	1/5/5/5	0/1/1/1
6	PEG	B	604	-	-	2/4/4/4	-
6	PEG	B	603	-	-	2/4/4/4	-
3	EOL	B	602	-	-	2/5/5/5	0/1/1/1
2	FAD	B	601	-	-	3/30/50/50	0/6/6/6
4	P6G	A	603	-	-	7/16/16/16	-

All (1) bond length outliers are listed below:

Mol	Chain	Res	Type	Atoms	Z	Observed(Å)	Ideal(Å)
2	B	601	FAD	C1'-C2'	2.57	1.56	1.52

All (5) bond angle outliers are listed below:

Mol	Chain	Res	Type	Atoms	Z	Observed(°)	Ideal(°)
5	A	604	P4G	C2-O2-C3	2.74	122.70	112.90
5	B	606	P4G	O4-C6-C5	-2.73	98.10	110.39
2	A	601	FAD	C4-N3-C2	-2.32	121.36	125.64

Continued on next page...

Continued from previous page...

Mol	Chain	Res	Type	Atoms	Z	Observed(°)	Ideal(°)
5	A	604	P4G	C7-O4-C6	2.06	120.28	112.90
2	A	601	FAD	C4X-C4-N3	2.00	118.27	113.19

There are no chirality outliers.

All (34) torsion outliers are listed below:

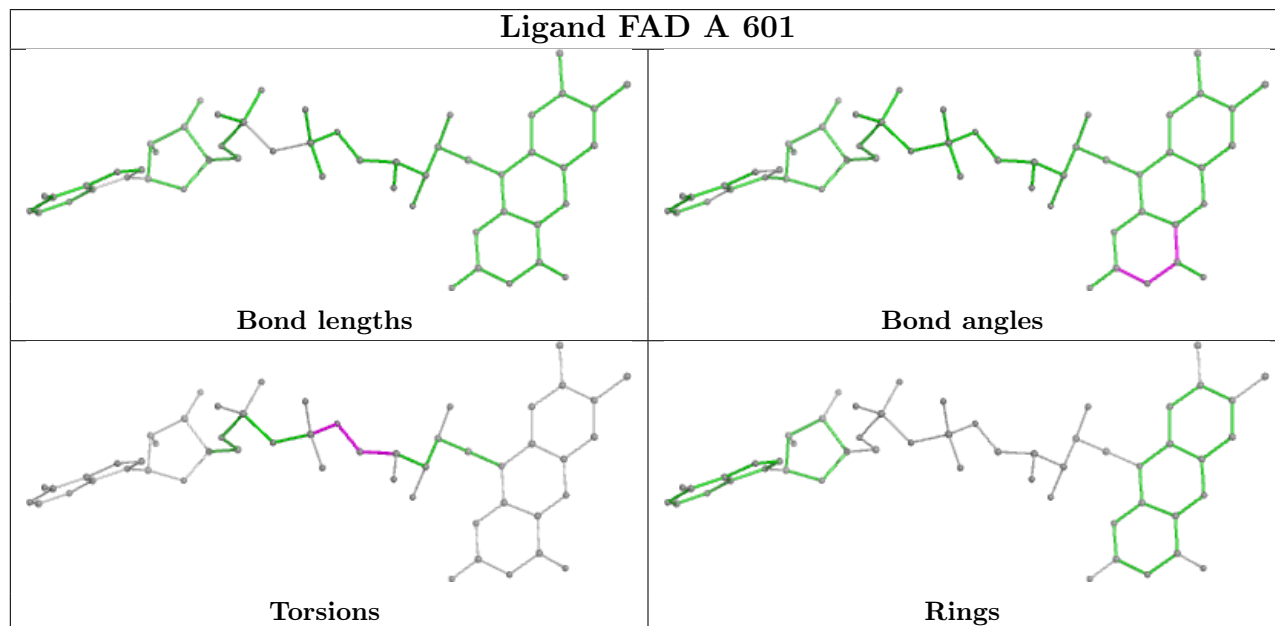
Mol	Chain	Res	Type	Atoms
2	A	601	FAD	C5'-O5'-P-O2P
4	A	603	P6G	C2-C3-O4-C5
4	A	603	P6G	C11-C12-O13-C14
4	A	603	P6G	O10-C11-C12-O13
4	A	603	P6G	O16-C17-C18-O19
6	B	604	PEG	O1-C1-C2-O2
4	A	603	P6G	O4-C5-C6-O7
3	A	602	EOL	C2-C7-C8-C9
3	B	602	EOL	C2-C7-C8-C9
6	B	604	PEG	O2-C3-C4-O4
2	A	601	FAD	O4'-C4'-C5'-O5'
2	A	601	FAD	C3'-C4'-C5'-O5'
2	B	601	FAD	C3'-C4'-C5'-O5'
5	B	606	P4G	C8-C7-O4-C6
5	A	604	P4G	C8-C7-O4-C6
2	A	601	FAD	C4'-C5'-O5'-P
5	B	606	P4G	C5-C6-O4-C7
2	B	601	FAD	C4'-C5'-O5'-P
4	A	603	P6G	C8-C9-O10-C11
2	A	601	FAD	C5'-O5'-P-O3P
6	B	605	PEG	O1-C1-C2-O2
4	A	603	P6G	C15-C14-O13-C12
6	B	605	PEG	C4-C3-O2-C2
2	B	601	FAD	O4'-C4'-C5'-O5'
5	A	604	P4G	C5-C6-O4-C7
5	A	604	P4G	C1-C2-O2-C3
6	B	605	PEG	C1-C2-O2-C3
6	B	603	PEG	O2-C3-C4-O4
5	A	604	P4G	O3-C5-C6-O4
5	B	606	P4G	O3-C5-C6-O4
6	B	603	PEG	O1-C1-C2-O2
2	A	601	FAD	C5'-O5'-P-O1P
3	B	602	EOL	C1-C2-C7-C8
6	B	605	PEG	O2-C3-C4-O4

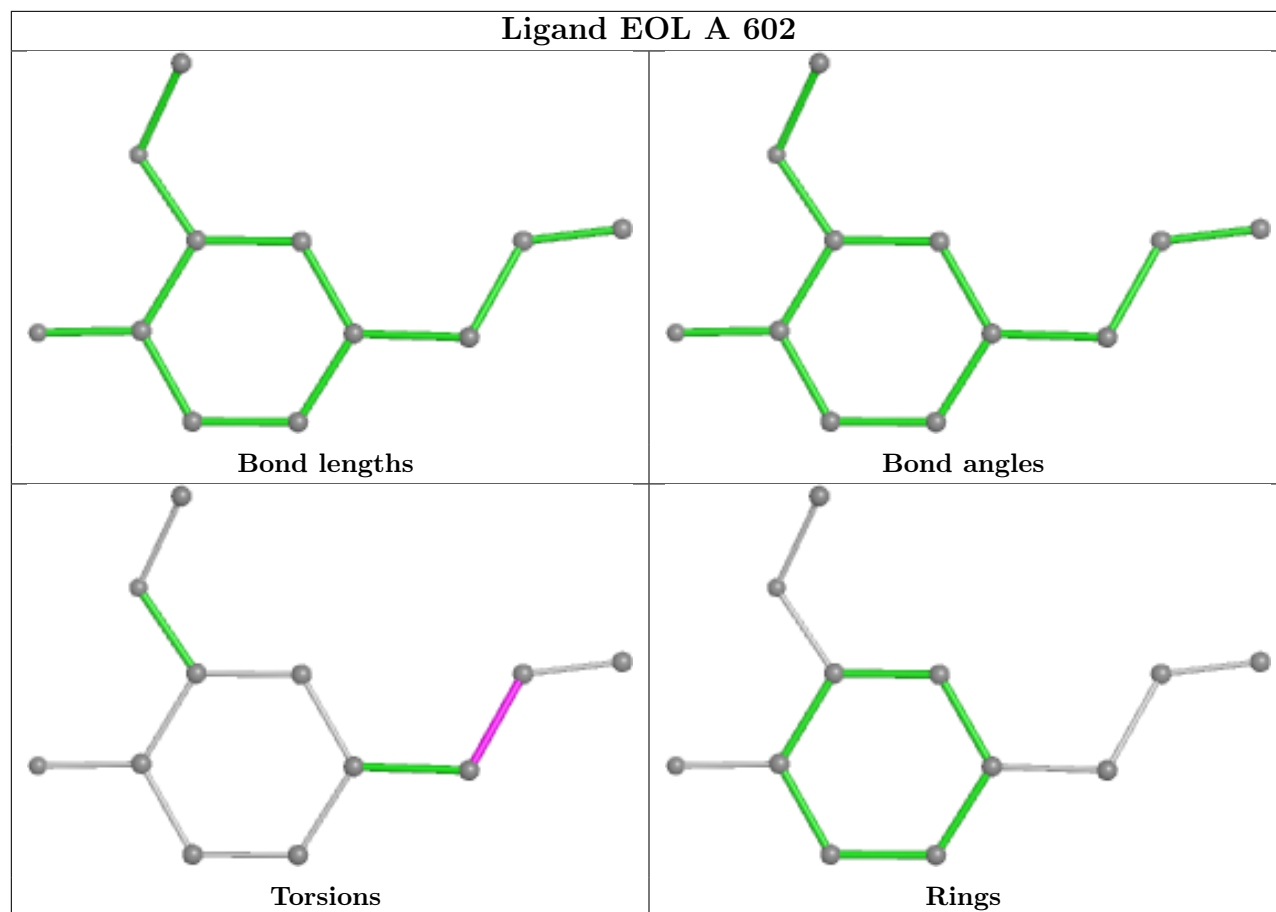
There are no ring outliers.

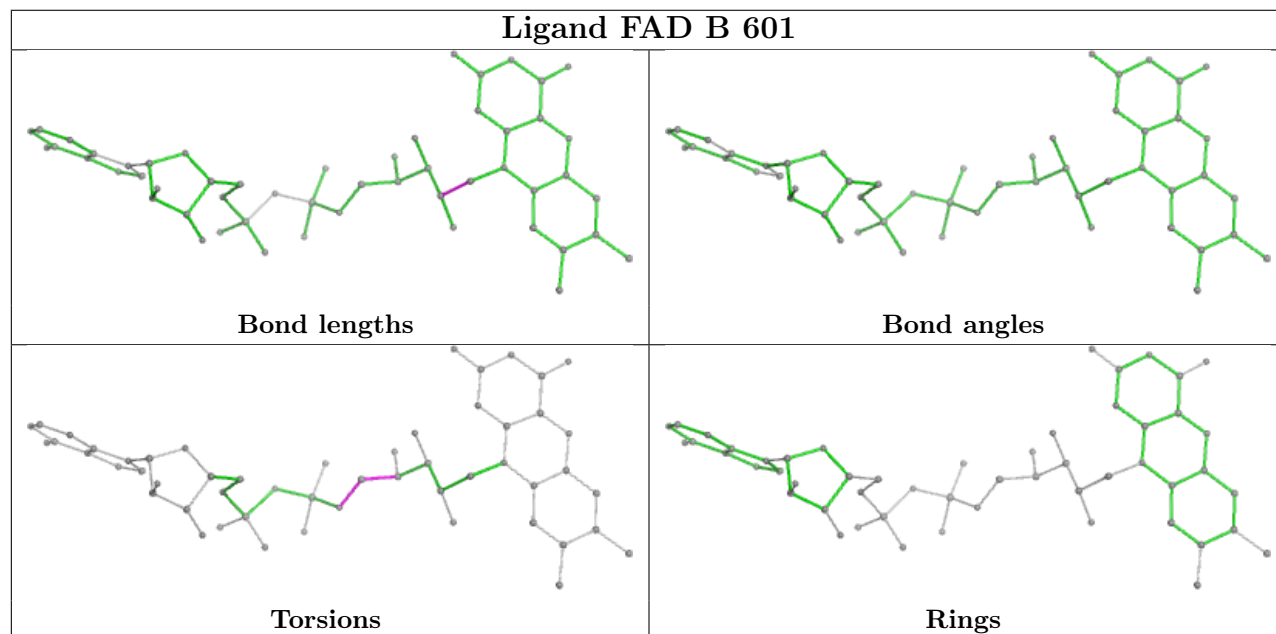
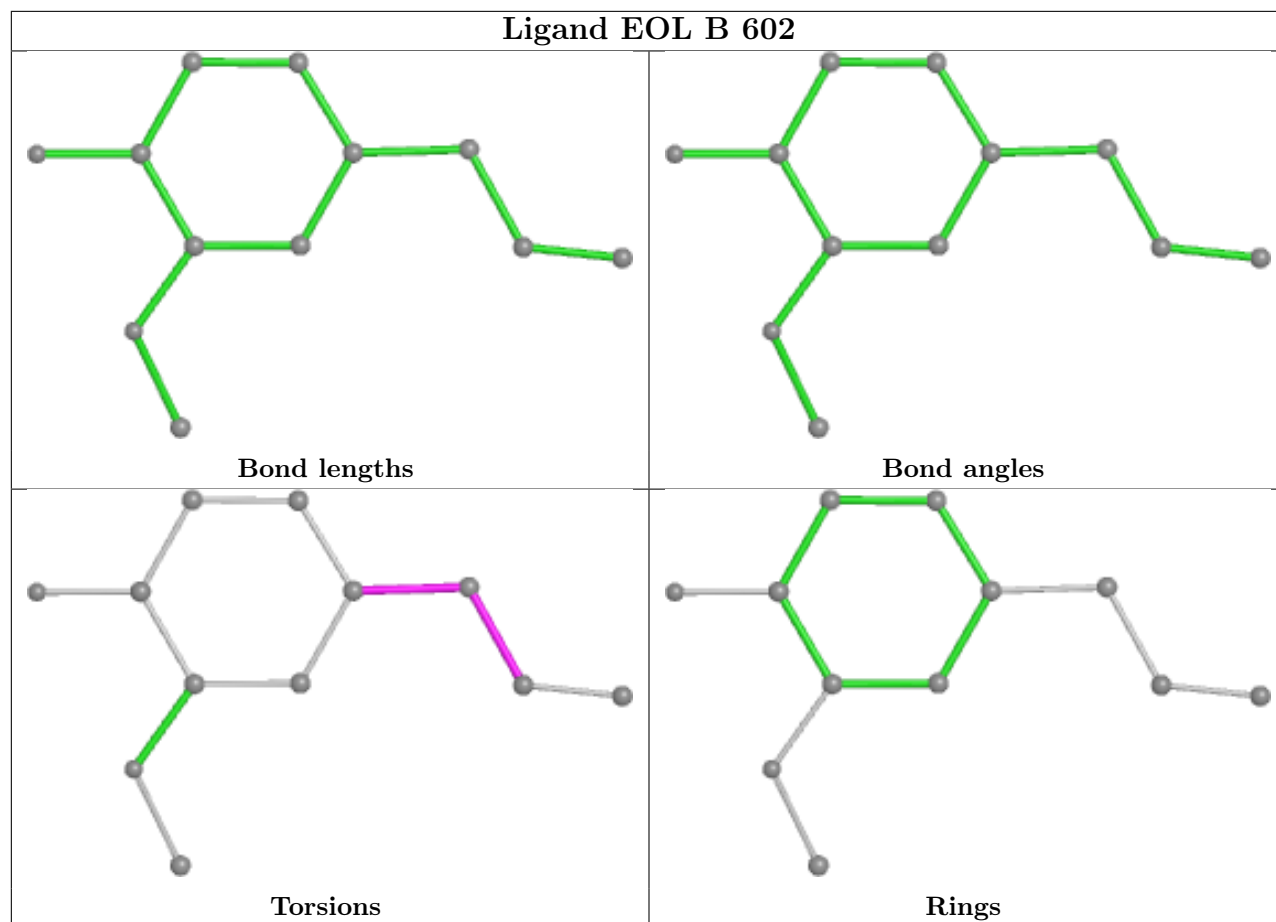
6 monomers are involved in 20 short contacts:

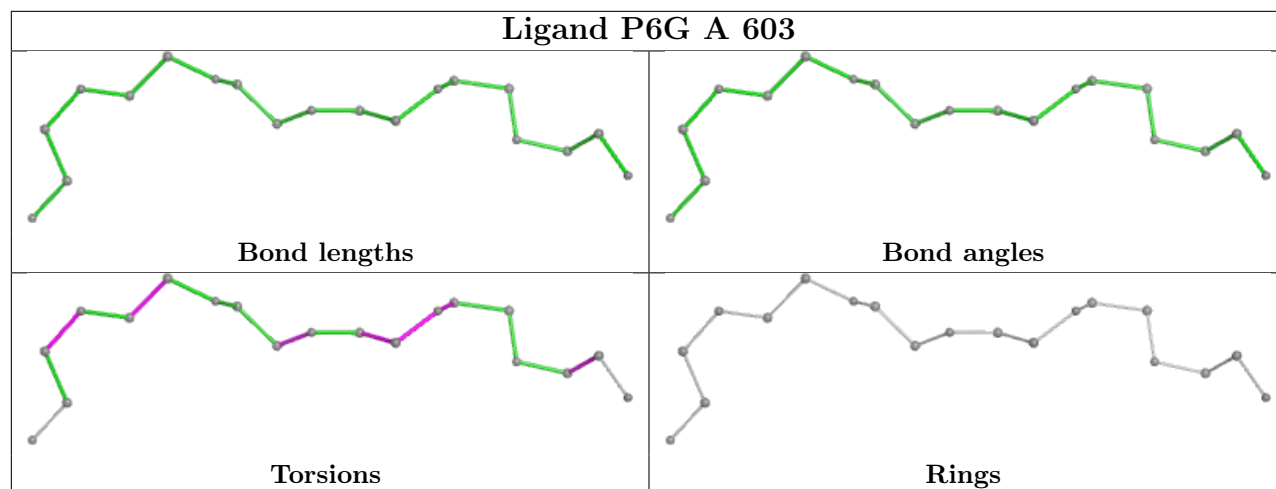
Mol	Chain	Res	Type	Clashes	Symm-Clashes
2	A	601	FAD	1	0
5	A	604	P4G	7	0
5	B	606	P4G	3	0
3	A	602	EOL	2	0
2	B	601	FAD	6	0
4	A	603	P6G	2	0

The following is a two-dimensional graphical depiction of Mogul quality analysis of bond lengths, bond angles, torsion angles, and ring geometry for all instances of the Ligand of Interest. In addition, ligands with molecular weight > 250 and outliers as shown on the validation Tables will also be included. For torsion angles, if less than 5% of the Mogul distribution of torsion angles is within 10 degrees of the torsion angle in question, then that torsion angle is considered an outlier. Any bond that is central to one or more torsion angles identified as an outlier by Mogul will be highlighted in the graph. For rings, the root-mean-square deviation (RMSD) between the ring in question and similar rings identified by Mogul is calculated over all ring torsion angles. If the average RMSD is greater than 60 degrees and the minimal RMSD between the ring in question and any Mogul-identified rings is also greater than 60 degrees, then that ring is considered an outlier. The outliers are highlighted in purple. The color gray indicates Mogul did not find sufficient equivalents in the CSD to analyse the geometry.









5.7 Other polymers [i](#)

There are no such residues in this entry.

5.8 Polymer linkage issues [i](#)

There are no chain breaks in this entry.

6 Fit of model and data

6.1 Protein, DNA and RNA chains

In the following table, the column labelled ‘#RSRZ > 2’ contains the number (and percentage) of RSRZ outliers, followed by percent RSRZ outliers for the chain as percentile scores relative to all X-ray entries and entries of similar resolution. The OWAB column contains the minimum, median, 95th percentile and maximum values of the occupancy-weighted average B-factor per residue. The column labelled ‘Q < 0.9’ lists the number of (and percentage) of residues with an average occupancy less than 0.9.

Mol	Chain	Analysed	<RSRZ>	#RSRZ>2	OWAB(Å ²)	Q<0.9
1	A	524/554 (94%)	-0.16	13 (2%) 58 59	6, 13, 28, 57	2 (0%)
1	B	524/554 (94%)	0.13	17 (3%) 50 51	9, 17, 32, 53	0
All	All	1048/1108 (94%)	-0.02	30 (2%) 54 55	6, 15, 30, 57	2 (0%)

All (30) RSRZ outliers are listed below:

Mol	Chain	Res	Type	RSRZ
1	A	49	ALA	6.8
1	A	471	TYR	5.1
1	B	526	LEU	4.4
1	A	48	ASP	4.0
1	A	526	LEU	3.8
1	A	51	ALA	3.6
1	A	50	ASP	3.5
1	A	46	VAL	3.4
1	B	471	TYR	3.0
1	A	47	GLY	2.9
1	B	439	LEU	2.9
1	B	12	GLU	2.8
1	A	439	LEU	2.8
1	B	49	ALA	2.8
1	B	50	ASP	2.7
1	A	310	LYS	2.6
1	B	9	VAL	2.5
1	B	295	ASP	2.4
1	A	361	HIS	2.4
1	B	361	HIS	2.4
1	B	15	THR	2.3
1	B	294	TYR	2.2
1	A	249	GLU	2.2
1	B	297	ASP	2.2

Continued on next page...

Continued from previous page...

Mol	Chain	Res	Type	RSRZ
1	A	343	GLN	2.2
1	B	5	LEU	2.1
1	B	489	ASP	2.1
1	B	23	ASP	2.0
1	B	438	LEU	2.0
1	B	440	LEU	2.0

6.2 Non-standard residues in protein, DNA, RNA chains [i](#)

There are no non-standard protein/DNA/RNA residues in this entry.

6.3 Carbohydrates [i](#)

There are no monosaccharides in this entry.

6.4 Ligands [i](#)

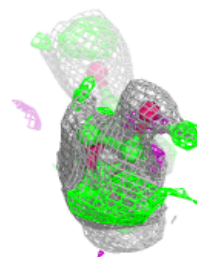
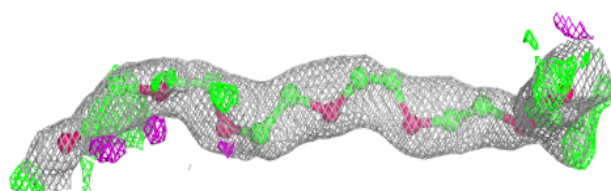
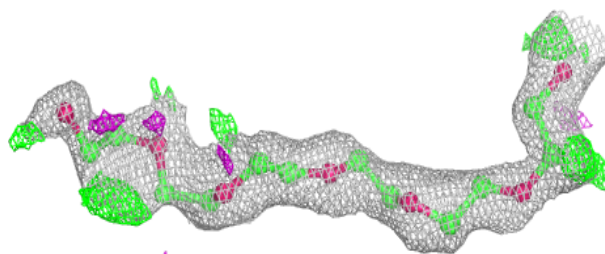
In the following table, the Atoms column lists the number of modelled atoms in the group and the number defined in the chemical component dictionary. The B-factors column lists the minimum, median, 95th percentile and maximum values of B factors of atoms in the group. The column labelled 'Q< 0.9' lists the number of atoms with occupancy less than 0.9.

Mol	Type	Chain	Res	Atoms	RSCC	RSR	B-factors(Å ²)	Q<0.9
5	P4G	B	606	11/11	0.78	0.17	28,31,37,37	0
4	P6G	A	603	19/19	0.80	0.18	37,40,43,46	0
3	EOL	B	602	12/12	0.80	0.18	34,38,44,50	0
3	EOL	A	602	12/12	0.82	0.15	28,30,38,41	0
5	P4G	A	604	11/11	0.83	0.15	22,23,29,31	0
6	PEG	B	605	7/7	0.84	0.15	36,38,43,48	0
6	PEG	B	603	7/7	0.86	0.15	35,36,37,42	0
6	PEG	B	604	7/7	0.88	0.13	33,34,35,38	0
2	FAD	B	601	53/53	0.98	0.05	11,13,16,18	0
2	FAD	A	601	53/53	0.99	0.04	7,9,12,15	0

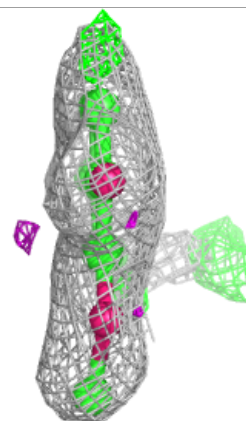
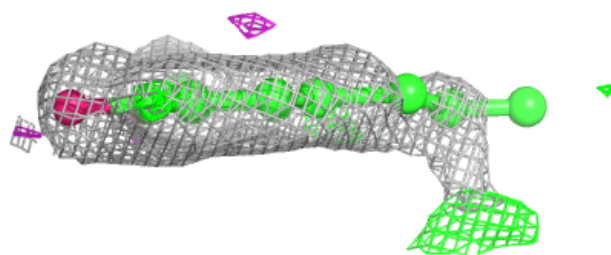
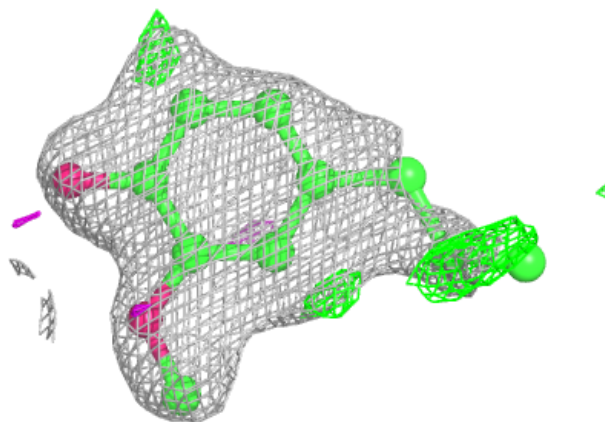
The following is a graphical depiction of the model fit to experimental electron density of all instances of the Ligand of Interest. In addition, ligands with molecular weight > 250 and outliers as shown on the geometry validation Tables will also be included. Each fit is shown from different orientation to approximate a three-dimensional view.

Electron density around P6G A 603:

$2mF_o-DF_c$ (at 0.7 rmsd) in gray
 mF_o-DF_c (at 3 rmsd) in purple (negative)
and green (positive)

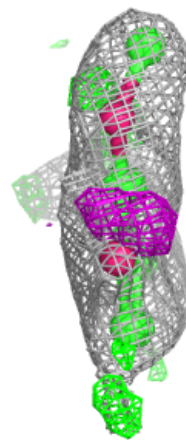
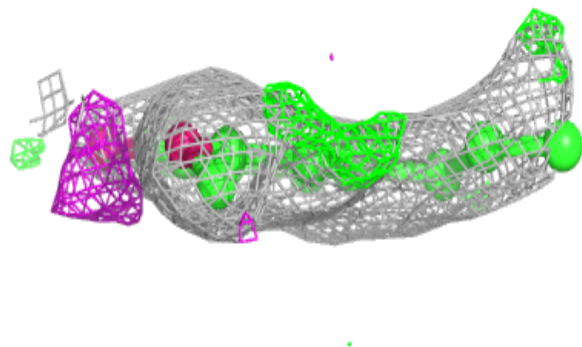
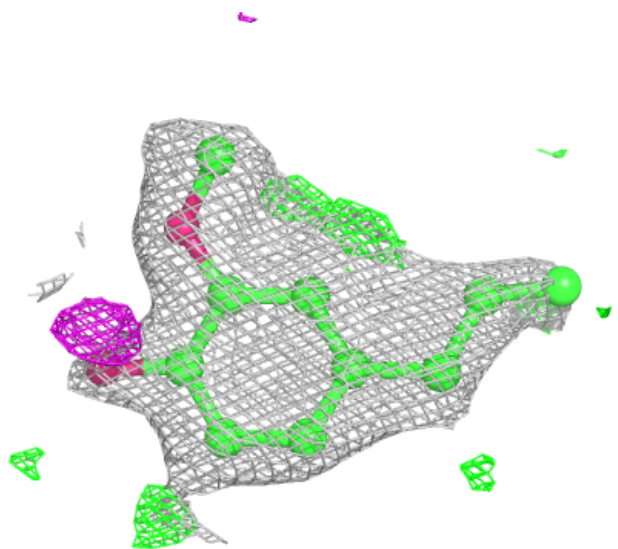
**Electron density around EOL B 602:**

$2mF_o-DF_c$ (at 0.7 rmsd) in gray
 mF_o-DF_c (at 3 rmsd) in purple (negative)
and green (positive)



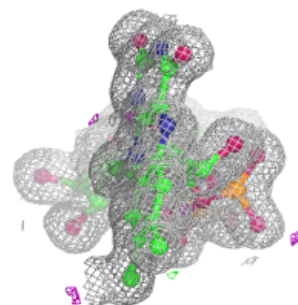
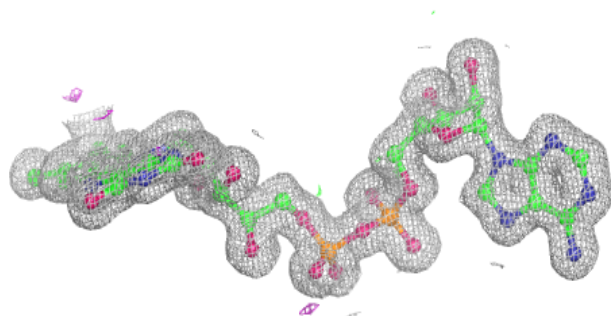
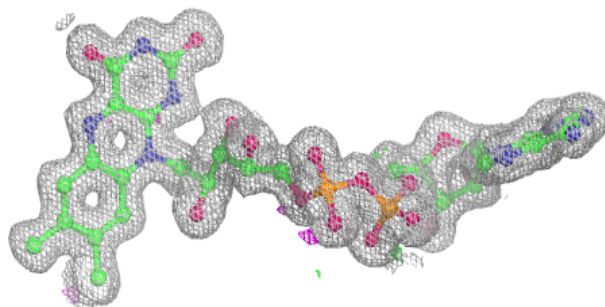
Electron density around EOL A 602:

$2mF_o-DF_c$ (at 0.7 rmsd) in gray
 mF_o-DF_c (at 3 rmsd) in purple (negative)
and green (positive)

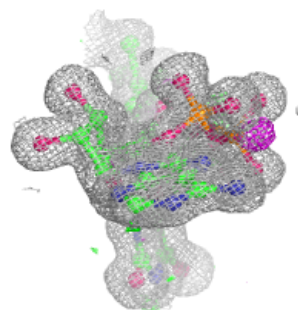
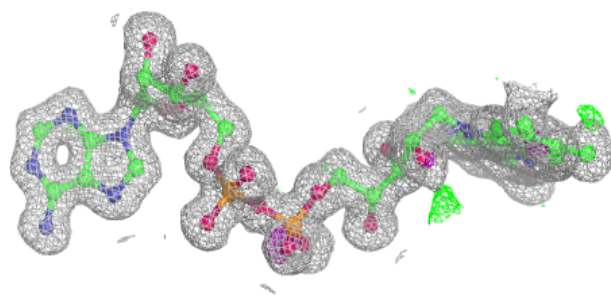
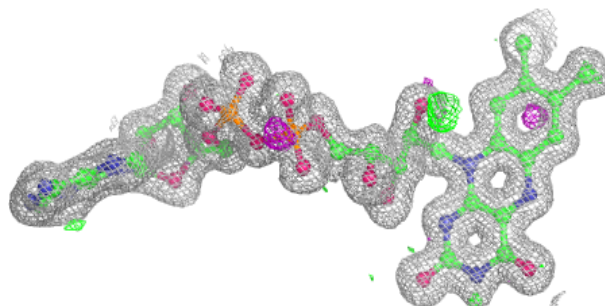


Electron density around FAD B 601:

$2mF_o-DF_c$ (at 0.7 rmsd) in gray
 mF_o-DF_c (at 3 rmsd) in purple (negative)
and green (positive)

**Electron density around FAD A 601:**

$2mF_o-DF_c$ (at 0.7 rmsd) in gray
 mF_o-DF_c (at 3 rmsd) in purple (negative)
and green (positive)



6.5 Other polymers [i](#)

There are no such residues in this entry.