



# Full wwPDB X-ray Structure Validation Report ⓘ

May 18, 2020 – 09:20 pm BST

PDB ID : 2GQ3  
Title : mycobacterium tuberculosis malate synthase in complex with magnesium, malate, and coenzyme A  
Authors : Anstrom, D.M.; Remington, S.J.  
Deposited on : 2006-04-19  
Resolution : 2.30 Å(reported)

This is a Full wwPDB X-ray Structure Validation Report for a publicly released PDB entry.

We welcome your comments at [validation@mail.wwpdb.org](mailto:validation@mail.wwpdb.org)

A user guide is available at

<https://www.wwpdb.org/validation/2017/XrayValidationReportHelp>

with specific help available everywhere you see the ⓘ symbol.

---

The following versions of software and data (see [references ⓘ](#)) were used in the production of this report:

MolProbity : 4.02b-467  
Mogul : 1.8.5 (274361), CSD as541be (2020)  
Xtriage (Phenix) : 1.13  
EDS : 2.11  
buster-report : 1.1.7 (2018)  
Percentile statistics : 20191225.v01 (using entries in the PDB archive December 25th 2019)  
Refmac : 5.8.0158  
CCP4 : 7.0.044 (Gargrove)  
Ideal geometry (proteins) : Engh & Huber (2001)  
Ideal geometry (DNA, RNA) : Parkinson et al. (1996)  
Validation Pipeline (wwPDB-VP) : 2.11

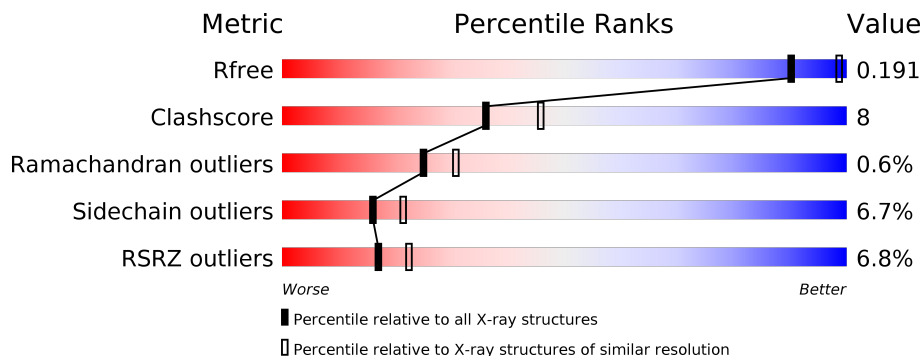
# 1 Overall quality at a glance

The following experimental techniques were used to determine the structure:

*X-RAY DIFFRACTION*

The reported resolution of this entry is 2.30 Å.

Percentile scores (ranging between 0-100) for global validation metrics of the entry are shown in the following graphic. The table shows the number of entries on which the scores are based.



Metric	Whole archive (#Entries)	Similar resolution (#Entries, resolution range(Å))
$R_{free}$	130704	5042 (2.30-2.30)
Clashscore	141614	5643 (2.30-2.30)
Ramachandran outliers	138981	5575 (2.30-2.30)
Sidechain outliers	138945	5575 (2.30-2.30)
RSRZ outliers	127900	4938 (2.30-2.30)

The table below summarises the geometric issues observed across the polymeric chains and their fit to the electron density. The red, orange, yellow and green segments on the lower bar indicate the fraction of residues that contain outliers for  $\geq 3$ , 2, 1 and 0 types of geometric quality criteria respectively. A grey segment represents the fraction of residues that are not modelled. The numeric value for each fraction is indicated below the corresponding segment, with a dot representing fractions  $\leq 5\%$ . The upper red bar (where present) indicates the fraction of residues that have poor fit to the electron density. The numeric value is given above the bar.

Mol	Chain	Length	Quality of chain
1	A	729	 2% 83% 14% ..
1	B	729	 11% 73% 21% ..

The following table lists non-polymeric compounds, carbohydrate monomers and non-standard residues in protein, DNA, RNA chains that are outliers for geometric or electron-density-fit criteria:

<b>Mol</b>	<b>Type</b>	<b>Chain</b>	<b>Res</b>	<b>Chirality</b>	<b>Geometry</b>	<b>Clashes</b>	<b>Electron density</b>
3	MLT	A	900	X	-	-	-
3	MLT	B	901	X	-	-	-

## 2 Entry composition [i](#)

There are 6 unique types of molecules in this entry. The entry contains 11633 atoms, of which 0 are hydrogens and 0 are deuteriums.

In the tables below, the ZeroOcc column contains the number of atoms modelled with zero occupancy, the AltConf column contains the number of residues with at least one atom in alternate conformation and the Trace column contains the number of residues modelled with at most 2 atoms.

- Molecule 1 is a protein called Malate synthase G.

Mol	Chain	Residues	Atoms					ZeroOcc	AltConf	Trace
			Total	C	N	O	S			
1	A	720	5487	3444	964	1057	22	0	0	0
1	B	714	5429	3411	953	1043	22	0	0	0

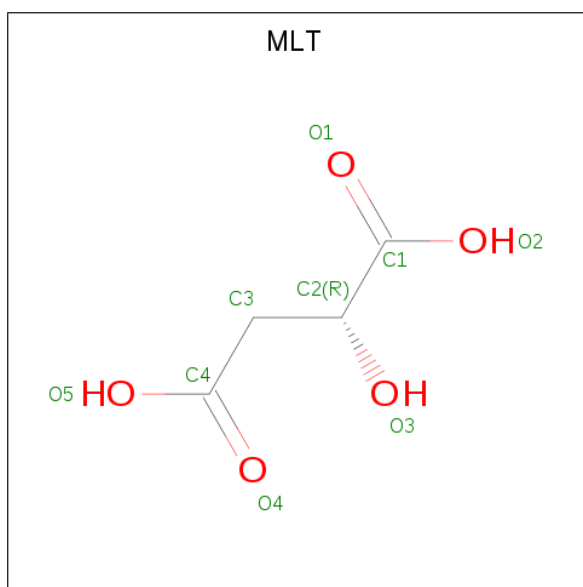
There are 4 discrepancies between the modelled and reference sequences:

Chain	Residue	Modelled	Actual	Comment	Reference
A	-1	GLY	-	CLONING ARTIFACT	UNP P0A5J4
A	0	SER	-	CLONING ARTIFACT	UNP P0A5J4
B	-1	GLY	-	CLONING ARTIFACT	UNP P0A5J4
B	0	SER	-	CLONING ARTIFACT	UNP P0A5J4

- Molecule 2 is MAGNESIUM ION (three-letter code: MG) (formula: Mg).

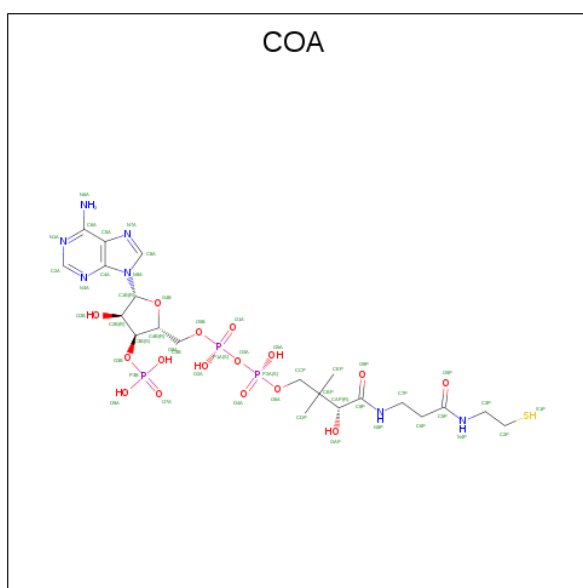
Mol	Chain	Residues	Atoms		ZeroOcc	AltConf
2	B	2	Total	Mg	0	0
			2	2		
2	A	2	Total	Mg	0	0
			2	2		

- Molecule 3 is D-MALATE (three-letter code: MLT) (formula: C<sub>4</sub>H<sub>6</sub>O<sub>5</sub>).



Mol	Chain	Residues	Atoms			ZeroOcc	AltConf
3	A	1	Total	C	O	0	0
			9	4	5		
3	B	1	Total	C	O	0	0
			9	4	5		

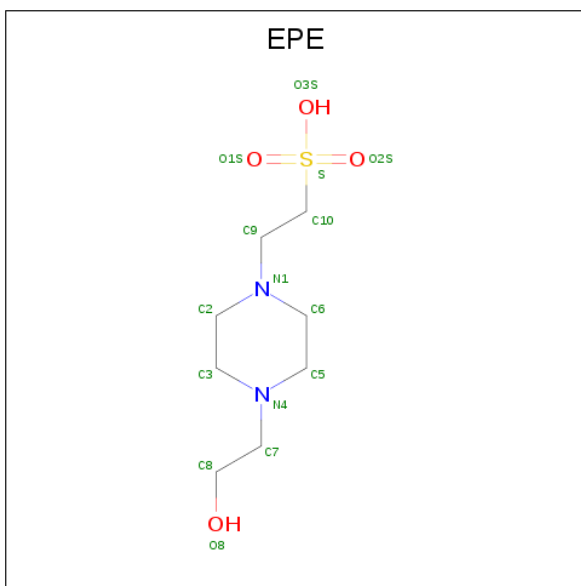
- Molecule 4 is COENZYME A (three-letter code: COA) (formula:  $C_{21}H_{36}N_7O_{16}P_3S$ ).



Mol	Chain	Residues	Atoms					ZeroOcc	AltConf	
4	A	1	Total	C	N	O	P	S	0	0
			48	21	7	16	3	1		

- Molecule 5 is 4-(2-HYDROXYETHYL)-1-PIPERAZINE ETHANESULFONIC ACID

(three-letter code: EPE) (formula: C<sub>8</sub>H<sub>18</sub>N<sub>2</sub>O<sub>4</sub>S).



Mol	Chain	Residues	Atoms					ZeroOcc	AltConf
			Total	C	N	O	S		
5	A	1	15	8	2	4	1	0	0
5	B	1	15	8	2	4	1	0	0

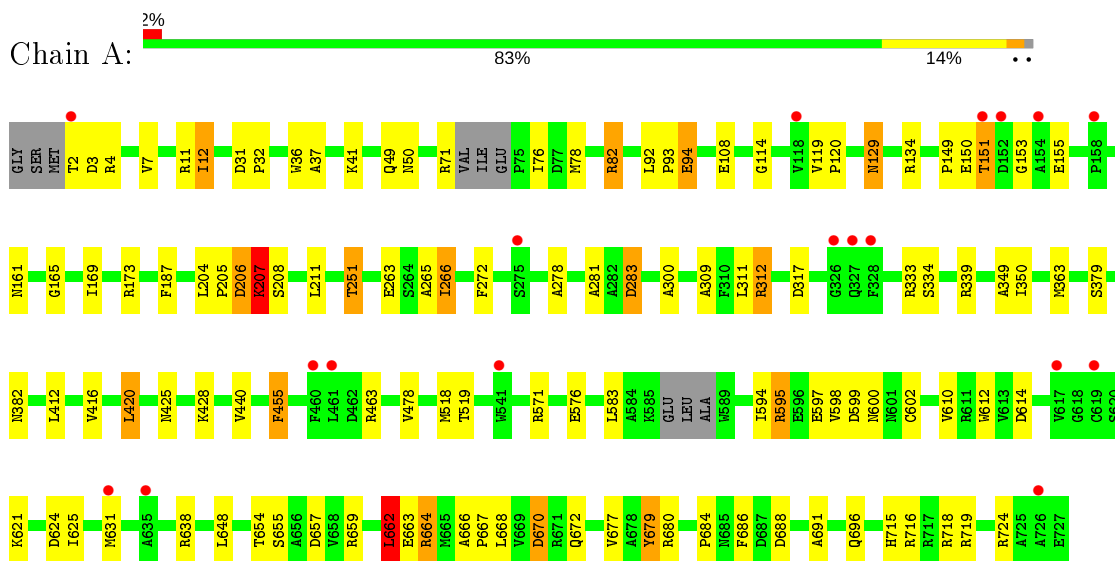
- Molecule 6 is water.

Mol	Chain	Residues	Atoms		ZeroOcc	AltConf
			Total	O		
6	A	448	448	448	0	0
6	B	169	169	169	0	0

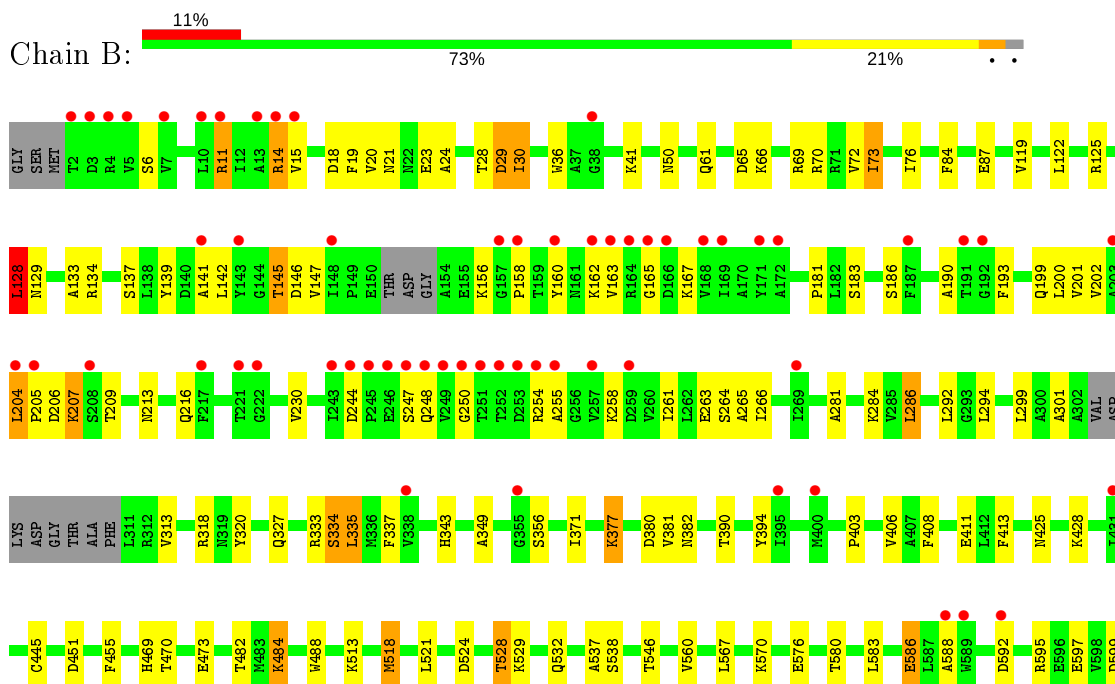
### 3 Residue-property plots [i](#)

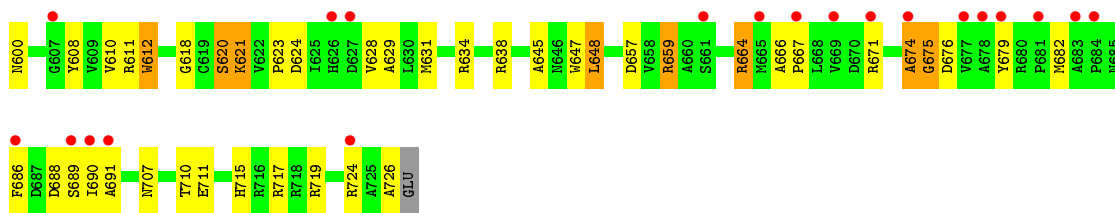
These plots are drawn for all protein, RNA and DNA chains in the entry. The first graphic for a chain summarises the proportions of the various outlier classes displayed in the second graphic. The second graphic shows the sequence view annotated by issues in geometry and electron density. Residues are color-coded according to the number of geometric quality criteria for which they contain at least one outlier: green = 0, yellow = 1, orange = 2 and red = 3 or more. A red dot above a residue indicates a poor fit to the electron density ( $RSRZ > 2$ ). Stretches of 2 or more consecutive residues without any outlier are shown as a green connector. Residues present in the sample, but not in the model, are shown in grey.

- Molecule 1: Malate synthase G



- Molecule 1: Malate synthase G







## 4 Data and refinement statistics

Property	Value	Source
Space group	P 41 21 2	Depositor
Cell constants a, b, c, $\alpha$ , $\beta$ , $\gamma$	120.38Å 120.38Å 238.89Å 90.00° 90.00° 90.00°	Depositor
Resolution (Å)	49.09 – 2.30 49.08 – 2.30	Depositor EDS
% Data completeness (in resolution range)	99.4 (49.09-2.30) 99.4 (49.08-2.30)	Depositor EDS
$R_{merge}$	0.09	Depositor
$R_{sym}$	(Not available)	Depositor
$\langle I/\sigma(I) \rangle$ <sup>1</sup>	2.97 (at 2.29Å)	Xtrriage
Refinement program	REFMAC	Depositor
R, $R_{free}$	0.178 , 0.244 0.181 , 0.191	Depositor DCC
$R_{free}$ test set	7746 reflections (9.91%)	wwPDB-VP
Wilson B-factor (Å <sup>2</sup> )	36.4	Xtrriage
Anisotropy	0.020	Xtrriage
Bulk solvent $k_{sol}$ (e/Å <sup>3</sup> ), $B_{sol}$ (Å <sup>2</sup> )	0.30 , 44.1	EDS
L-test for twinning <sup>2</sup>	$\langle  L  \rangle = 0.47$ , $\langle L^2 \rangle = 0.30$	Xtrriage
Estimated twinning fraction	No twinning to report.	Xtrriage
$F_o, F_c$ correlation	0.95	EDS
Total number of atoms	11633	wwPDB-VP
Average B, all atoms (Å <sup>2</sup> )	40.0	wwPDB-VP

Xtrriage's analysis on translational NCS is as follows: *The largest off-origin peak in the Patterson function is 2.39% of the height of the origin peak. No significant pseudotranslation is detected.*

<sup>1</sup>Intensities estimated from amplitudes.

<sup>2</sup>Theoretical values of  $\langle |L| \rangle$ ,  $\langle L^2 \rangle$  for acentric reflections are 0.5, 0.333 respectively for untwinned datasets, and 0.375, 0.2 for perfectly twinned datasets.

## 5 Model quality i

### 5.1 Standard geometry i

Bond lengths and bond angles in the following residue types are not validated in this section: COA, MG, EPE, MLT

The Z score for a bond length (or angle) is the number of standard deviations the observed value is removed from the expected value. A bond length (or angle) with  $|Z| > 5$  is considered an outlier worth inspection. RMSZ is the root-mean-square of all Z scores of the bond lengths (or angles).

Mol	Chain	Bond lengths		Bond angles	
		RMSZ	# Z  >5	RMSZ	# Z  >5
1	A	1.17	8/5591 (0.1%)	1.07	18/7605 (0.2%)
1	B	0.98	8/5532 (0.1%)	0.96	12/7530 (0.2%)
All	All	1.08	16/11123 (0.1%)	1.02	30/15135 (0.2%)

Chiral center outliers are detected by calculating the chiral volume of a chiral center and verifying if the center is modelled as a planar moiety or with the opposite hand. A planarity outlier is detected by checking planarity of atoms in a peptide group, atoms in a mainchain group or atoms of a sidechain that are expected to be planar.

Mol	Chain	#Chirality outliers	#Planarity outliers
1	A	0	2
1	B	0	4
All	All	0	6

All (16) bond length outliers are listed below:

Mol	Chain	Res	Type	Atoms	Z	Observed(Å)	Ideal(Å)
1	B	14	ARG	CZ-NH2	14.31	1.51	1.33
1	B	686	PHE	CG-CD1	6.75	1.48	1.38
1	B	14	ARG	NE-CZ	6.36	1.41	1.33
1	B	686	PHE	CE2-CZ	6.33	1.49	1.37
1	A	478	VAL	CB-CG1	6.24	1.66	1.52
1	B	686	PHE	CE1-CZ	6.22	1.49	1.37
1	A	37	ALA	CA-CB	6.22	1.65	1.52
1	B	726	ALA	C-O	5.91	1.34	1.23
1	A	94	GLU	CD-OE2	5.81	1.32	1.25
1	A	300	ALA	CA-CB	5.75	1.64	1.52
1	A	597	GLU	CB-CG	5.55	1.62	1.52
1	B	686	PHE	CG-CD2	5.45	1.47	1.38
1	A	679	TYR	CD1-CE1	5.41	1.47	1.39
1	A	94	GLU	CD-OE1	5.11	1.31	1.25

*Continued on next page...*

*Continued from previous page...*

Mol	Chain	Res	Type	Atoms	Z	Observed(Å)	Ideal(Å)
1	B	139	TYR	CD2-CE2	5.05	1.47	1.39
1	A	440	VAL	CB-CG1	5.03	1.63	1.52

All (30) bond angle outliers are listed below:

Mol	Chain	Res	Type	Atoms	Z	Observed(°)	Ideal(°)
1	A	638	ARG	NE-CZ-NH1	14.83	127.71	120.30
1	A	638	ARG	NE-CZ-NH2	-12.60	114.00	120.30
1	B	14	ARG	NE-CZ-NH1	-12.57	114.02	120.30
1	A	312	ARG	NE-CZ-NH2	-10.37	115.12	120.30
1	B	638	ARG	NE-CZ-NH1	9.59	125.09	120.30
1	B	638	ARG	NE-CZ-NH2	-8.93	115.83	120.30
1	A	664	ARG	NE-CZ-NH1	-7.93	116.34	120.30
1	A	664	ARG	NE-CZ-NH2	7.84	124.22	120.30
1	A	638	ARG	CB-CG-CD	7.75	131.75	111.60
1	B	657	ASP	CB-CG-OD2	-7.21	111.81	118.30
1	B	648	LEU	CA-CB-CG	7.20	131.85	115.30
1	A	4	ARG	NE-CZ-NH2	-6.51	117.04	120.30
1	B	335	LEU	CA-CB-CG	6.25	129.68	115.30
1	A	648	LEU	CA-CB-CG	6.20	129.56	115.30
1	B	717	ARG	NE-CZ-NH2	-6.17	117.22	120.30
1	A	614	ASP	CB-CG-OD2	6.10	123.79	118.30
1	A	670	ASP	CB-CG-OD1	6.01	123.71	118.30
1	A	283	ASP	CB-CG-OD1	5.99	123.69	118.30
1	A	595	ARG	NE-CZ-NH1	-5.87	117.37	120.30
1	A	518	MET	CG-SD-CE	-5.78	90.96	100.20
1	A	312	ARG	NE-CZ-NH1	5.76	123.18	120.30
1	B	69	ARG	NE-CZ-NH2	-5.69	117.45	120.30
1	B	318	ARG	NE-CZ-NH2	-5.58	117.51	120.30
1	A	662	LEU	CA-CB-CG	5.56	128.09	115.30
1	B	128	LEU	CA-CB-CG	5.48	127.91	115.30
1	A	716	ARG	NE-CZ-NH2	5.38	122.99	120.30
1	B	688	ASP	CB-CG-OD1	-5.37	113.47	118.30
1	A	463	ARG	NE-CZ-NH2	-5.03	117.79	120.30
1	A	82	ARG	CB-CA-C	-5.02	100.35	110.40
1	B	451	ASP	CB-CG-OD1	5.01	122.81	118.30

There are no chirality outliers.

All (6) planarity outliers are listed below:

Mol	Chain	Res	Type	Group
1	A	2	THR	Peptide

*Continued on next page...*

*Continued from previous page...*

Mol	Chain	Res	Type	Group
1	A	206	ASP	Peptide
1	B	183	SER	Peptide
1	B	586	GLU	Peptide
1	B	674	ALA	Peptide
1	B	675	GLY	Peptide

## 5.2 Too-close contacts [i](#)

In the following table, the Non-H and H(model) columns list the number of non-hydrogen atoms and hydrogen atoms in the chain respectively. The H(added) column lists the number of hydrogen atoms added and optimized by MolProbity. The Clashes column lists the number of clashes within the asymmetric unit, whereas Symm-Clashes lists symmetry related clashes.

Mol	Chain	Non-H	H(model)	H(added)	Clashes	Symm-Clashes
1	A	5487	0	5407	78	0
1	B	5429	0	5345	100	0
2	A	2	0	0	0	0
2	B	2	0	0	0	0
3	A	9	0	3	0	0
3	B	9	0	3	0	0
4	A	48	0	31	20	0
5	A	15	0	17	1	0
5	B	15	0	17	1	0
6	A	448	0	0	1	0
6	B	169	0	0	2	0
All	All	11633	0	10823	175	0

The all-atom clashscore is defined as the number of clashes found per 1000 atoms (including hydrogen atoms). The all-atom clashscore for this structure is 8.

All (175) close contacts within the same asymmetric unit are listed below, sorted by their clash magnitude.

Atom-1	Atom-2	Interatomic distance (Å)	Clash overlap (Å)
1:A:206:ASP:HB2	1:A:207:LYS:HB2	1.33	1.11
1:B:11:ARG:HH21	1:B:11:ARG:HG2	1.13	1.06
1:A:631:MET:SD	4:A:800:COA:H62	2.04	0.97
1:B:204:LEU:HB3	1:B:205:PRO:HD2	1.55	0.88
1:A:206:ASP:HB2	1:A:207:LYS:CB	2.04	0.86
1:B:11:ARG:CG	1:B:11:ARG:HH21	1.89	0.86
1:A:153:GLY:HA2	1:A:155:GLU:OE1	1.76	0.85

*Continued on next page...*

*Continued from previous page...*

Atom-1	Atom-2	Interatomic distance (Å)	Clash overlap (Å)
1:B:11:ARG:HG2	1:B:11:ARG:NH2	1.90	0.84
1:B:145:THR:CG2	1:B:147:VAL:HG23	2.08	0.83
1:B:21:ASN:HD21	1:B:36:TRP:HE1	1.22	0.82
1:A:206:ASP:CB	1:A:207:LYS:HB2	2.09	0.82
1:B:518:MET:HG3	1:B:521:LEU:HD12	1.65	0.79
1:B:30:ILE:N	1:B:30:ILE:HD13	1.98	0.79
1:B:610:VAL:HA	1:B:691:ALA:HB1	1.65	0.78
1:B:134:ARG:O	1:B:263:GLU:HA	1.84	0.77
1:A:599:ASP:OD1	1:A:664:ARG:NH1	2.18	0.76
1:A:631:MET:CE	4:A:800:COA:C6P	2.63	0.76
1:B:145:THR:HG21	1:B:147:VAL:HG23	1.66	0.75
1:B:141:ALA:O	1:B:145:THR:HB	1.87	0.74
1:B:620:SER:OG	6:B:2179:HOH:O	2.07	0.73
1:A:631:MET:SD	4:A:800:COA:H21	2.30	0.72
1:A:631:MET:HG2	4:A:800:COA:S1P	2.30	0.71
1:A:631:MET:HE1	4:A:800:COA:H71	1.72	0.71
1:B:199:GLN:OE1	1:B:199:GLN:HA	1.90	0.70
1:B:621:LYS:HZ2	1:B:629:ALA:HB1	1.55	0.70
1:A:114:GLY:HA3	1:A:266:ILE:HD11	1.72	0.70
1:A:631:MET:CE	4:A:800:COA:H62	2.22	0.69
1:A:382:ASN:O	6:A:2801:HOH:O	2.09	0.69
1:B:30:ILE:H	1:B:30:ILE:HD13	1.58	0.69
1:B:524:ASP:O	1:B:528:THR:HG23	1.93	0.68
1:B:263:GLU:HG2	1:B:266:ILE:HD11	1.76	0.68
1:A:311:LEU:HB2	1:B:313:VAL:HG11	1.77	0.67
1:A:631:MET:SD	4:A:800:COA:C6P	2.82	0.66
1:A:668:LEU:O	1:A:672:GLN:HG3	1.95	0.66
1:B:621:LYS:NZ	1:B:629:ALA:HB1	2.10	0.66
1:A:12:ILE:HD12	1:A:36:TRP:CZ3	2.31	0.66
1:A:150:GLU:HG2	1:A:155:GLU:HA	1.77	0.65
1:A:129:ASN:HB3	4:A:800:COA:H2A	1.78	0.65
1:A:715:HIS:O	1:A:719:ARG:HG3	1.96	0.64
1:A:416:VAL:HG12	1:A:420:LEU:HD22	1.79	0.64
1:B:200:LEU:HD11	1:B:230:VAL:HG11	1.81	0.63
1:A:7:VAL:HG11	1:A:36:TRP:HB3	1.80	0.63
1:B:292:LEU:HA	1:B:371:ILE:HG23	1.81	0.63
1:B:292:LEU:HA	1:B:371:ILE:CG2	2.29	0.62
1:B:281:ALA:HB2	1:B:349:ALA:HA	1.81	0.62
1:B:145:THR:CG2	1:B:147:VAL:H	2.13	0.61
1:B:160:TYR:HE2	1:B:162:LYS:HG3	1.66	0.60
1:B:529:LYS:NZ	1:B:532:GLN:HE22	1.99	0.60

*Continued on next page...*

*Continued from previous page...*

Atom-1	Atom-2	Interatomic distance (Å)	Clash overlap (Å)
1:B:600:ASN:OD1	1:B:624:ASP:HB2	2.02	0.59
1:A:425:ASN:O	1:A:428:LYS:HE3	2.03	0.59
1:A:281:ALA:HB2	1:A:349:ALA:HA	1.85	0.59
1:B:715:HIS:O	1:B:719:ARG:HG3	2.03	0.59
1:B:204:LEU:HB3	1:B:205:PRO:CD	2.30	0.59
1:B:623:PRO:HA	1:B:628:VAL:O	2.03	0.59
1:B:294:LEU:HG	1:B:299:LEU:HD22	1.85	0.59
1:A:206:ASP:HB2	1:A:207:LYS:CG	2.33	0.58
1:B:599:ASP:OD1	1:B:664:ARG:NH1	2.37	0.58
1:B:425:ASN:O	1:B:428:LYS:NZ	2.29	0.57
1:A:108:GLU:CG	1:A:266:ILE:HG22	2.35	0.57
1:B:160:TYR:OH	1:B:165:GLY:HA3	2.04	0.57
1:B:265:ALA:O	1:B:334:SER:OG	2.23	0.57
1:A:631:MET:HE1	4:A:800:COA:C7P	2.35	0.57
1:A:631:MET:SD	4:A:800:COA:C2P	2.93	0.56
1:B:84:PHE:HA	1:B:87:GLU:HG2	1.88	0.56
1:A:631:MET:HE2	4:A:800:COA:C6P	2.34	0.56
1:B:206:ASP:CG	1:B:207:LYS:H	2.08	0.55
1:A:425:ASN:O	1:A:428:LYS:CE	2.54	0.55
1:B:244:ASP:O	1:B:250:GLY:HA3	2.07	0.55
1:B:19:PHE:O	1:B:23:GLU:HB2	2.05	0.55
1:A:631:MET:CG	4:A:800:COA:S1P	2.94	0.55
1:A:206:ASP:HB2	1:A:207:LYS:HG3	1.88	0.54
1:A:78:MET:HE2	1:A:576:GLU:HG3	1.89	0.54
1:B:244:ASP:O	1:B:247:SER:HB3	2.07	0.54
1:A:92:LEU:HB3	1:A:93:PRO:HD2	1.89	0.54
1:A:631:MET:CE	4:A:800:COA:C7P	2.86	0.53
1:A:312:ARG:NH2	4:A:800:COA:O7A	2.36	0.53
1:A:631:MET:HE2	4:A:800:COA:H61	1.90	0.52
1:A:519:THR:OG1	1:A:621:LYS:HD2	2.09	0.52
1:B:190:ALA:O	1:B:255:ALA:HB2	2.09	0.52
1:B:137:SER:HA	1:B:261:ILE:HD13	1.92	0.52
1:A:610:VAL:HA	1:A:691:ALA:HB1	1.92	0.51
1:B:28:THR:O	1:B:29:ASP:HB2	2.10	0.51
1:B:567:LEU:O	1:B:570:LYS:HB2	2.09	0.51
1:B:592:ASP:HA	1:B:595:ARG:HB3	1.91	0.51
1:B:676:ASP:O	1:B:679:TYR:N	2.42	0.51
1:B:213:ASN:HB3	1:B:216:GLN:HG3	1.92	0.51
1:A:631:MET:HE3	4:A:800:COA:H143	1.92	0.50
1:A:317:ASP:OD1	1:A:333:ARG:NH1	2.44	0.50
1:B:320:TYR:O	1:B:327:GLN:HA	2.11	0.50

*Continued on next page...*

*Continued from previous page...*

Atom-1	Atom-2	Interatomic distance (Å)	Clash overlap (Å)
1:A:149:PRO:HB2	1:A:151:THR:HB	1.94	0.49
1:A:663:GLU:HG2	1:A:686:PHE:CE1	2.47	0.49
1:A:114:GLY:CA	1:A:266:ILE:HD11	2.41	0.49
1:B:133:ALA:O	1:B:264:SER:HB2	2.12	0.49
1:A:309:ALA:O	1:B:313:VAL:HG22	2.13	0.49
1:A:718:ARG:NH2	5:A:5000:EPE:H82	2.27	0.49
1:A:631:MET:HG3	4:A:800:COA:H141	1.94	0.49
1:A:206:ASP:CA	1:A:207:LYS:HB2	2.43	0.48
1:B:128:LEU:HD12	1:B:301:ALA:HB3	1.95	0.48
1:A:602:CYS:SG	1:A:662:LEU:HD13	2.54	0.48
1:B:411:GLU:OE1	1:B:411:GLU:HA	2.14	0.48
1:B:513:LYS:HG3	1:B:537:ALA:HB2	1.96	0.48
5:B:6000:EPE:O8	5:B:6000:EPE:H52	2.13	0.48
1:B:529:LYS:HZ1	1:B:532:GLN:HE22	1.62	0.47
1:A:379:SER:OG	1:A:382:ASN:ND2	2.47	0.47
1:B:30:ILE:CD1	1:B:30:ILE:N	2.71	0.47
1:B:333:ARG:NH2	1:B:333:ARG:HB2	2.29	0.47
1:B:482:THR:HG22	1:B:482:THR:O	2.14	0.47
1:A:350:ILE:HD12	1:A:363:MET:SD	2.55	0.47
1:B:538:SER:HA	1:B:560:VAL:HG11	1.95	0.47
1:B:611:ARG:HE	1:B:620:SER:HB3	1.80	0.47
1:B:145:THR:HG22	1:B:147:VAL:H	1.79	0.46
1:B:61:GLN:OE1	1:B:470:THR:HA	2.15	0.46
1:A:311:LEU:HB2	1:B:313:VAL:CG1	2.44	0.46
1:B:145:THR:HG23	1:B:147:VAL:H	1.79	0.46
1:A:659:ARG:HD3	1:A:696:GLN:OE1	2.15	0.46
1:B:199:GLN:OE1	1:B:199:GLN:CA	2.63	0.46
1:B:206:ASP:CG	1:B:207:LYS:N	2.69	0.46
1:B:14:ARG:HG3	1:B:18:ASP:OD2	2.16	0.46
1:B:145:THR:HG23	1:B:146:ASP:N	2.31	0.46
1:A:119:VAL:CG2	1:A:120:PRO:HD2	2.46	0.45
1:A:631:MET:HE3	4:A:800:COA:CEP	2.47	0.45
1:B:666:ALA:N	1:B:667:PRO:HD2	2.32	0.45
1:B:244:ASP:CG	1:B:247:SER:HB2	2.36	0.45
1:A:455:PHE:CD1	1:A:455:PHE:C	2.90	0.45
1:A:680:ARG:O	1:A:680:ARG:HG3	2.17	0.45
1:A:204:LEU:HB3	1:A:205:PRO:HD2	1.99	0.44
1:B:200:LEU:HD23	1:B:201:VAL:N	2.32	0.44
1:A:666:ALA:HB3	1:A:667:PRO:HD3	1.99	0.44
1:A:165:GLY:O	1:A:169:ILE:HG13	2.17	0.44
1:A:134:ARG:HD2	1:A:334:SER:HA	1.98	0.44

*Continued on next page...*

*Continued from previous page...*

Atom-1	Atom-2	Interatomic distance (Å)	Clash overlap (Å)
1:B:163:VAL:O	1:B:167:LYS:HG3	2.18	0.44
1:B:193:PHE:CE2	1:B:202:VAL:HG22	2.52	0.44
1:B:682:MET:HG2	1:B:689:SER:OG	2.18	0.44
1:A:266:ILE:H	1:A:266:ILE:HG13	1.55	0.44
1:B:674:ALA:HA	1:B:675:GLY:HA2	1.67	0.44
1:B:403:PRO:HD2	6:B:2204:HOH:O	2.17	0.44
1:B:612:TRP:CD1	1:B:618:GLY:HA2	2.53	0.44
1:B:337:PHE:CD2	1:B:394:TYR:HB3	2.53	0.43
1:B:488:TRP:HB3	1:B:580:THR:O	2.19	0.43
1:A:594:ILE:O	1:A:598:VAL:HG23	2.18	0.43
1:A:134:ARG:O	1:A:263:GLU:HA	2.18	0.43
1:A:272:PHE:HB2	1:A:339:ARG:O	2.19	0.43
1:A:278:ALA:HA	1:A:283:ASP:HB3	2.00	0.43
1:B:469:HIS:CD2	1:B:707:ASN:HA	2.53	0.43
1:B:611:ARG:HH21	1:B:611:ARG:HG2	1.82	0.43
1:A:251:THR:HG21	1:B:158:PRO:HG2	2.00	0.42
1:B:122:LEU:HG	1:B:286:LEU:HD22	2.01	0.42
1:B:264:SER:O	1:B:266:ILE:HD12	2.18	0.42
1:A:631:MET:SD	4:A:800:COA:S1P	3.18	0.42
1:B:66:LYS:HE2	1:B:66:LYS:HB2	1.58	0.42
1:B:711:GLU:O	1:B:715:HIS:HB2	2.20	0.42
1:A:265:ALA:O	1:A:334:SER:HB2	2.19	0.42
1:A:129:ASN:HB3	4:A:800:COA:C2A	2.47	0.42
1:B:645:ALA:O	1:B:648:LEU:HB3	2.19	0.42
1:A:670:ASP:OD1	1:A:679:TYR:OH	2.29	0.42
1:B:244:ASP:HB3	1:B:258:LYS:HB2	2.01	0.42
1:B:659:ARG:HA	1:B:659:ARG:HD2	1.78	0.42
1:A:161:ASN:OD1	1:A:161:ASN:C	2.56	0.42
1:A:108:GLU:HG3	1:A:266:ILE:HG22	2.03	0.41
1:B:608:TYR:CZ	1:B:612:TRP:HD1	2.37	0.41
1:A:654:THR:O	1:A:657:ASP:HB2	2.20	0.41
1:B:21:ASN:N	1:B:21:ASN:HD22	2.17	0.41
1:B:20:VAL:HA	1:B:24:ALA:HB3	2.02	0.41
1:A:600:ASN:OD1	1:A:624:ASP:HB2	2.21	0.41
1:B:377:LYS:HG2	1:B:382:ASN:ND2	2.36	0.41
1:B:413:PHE:CD1	1:B:413:PHE:N	2.88	0.41
1:B:406:VAL:HG21	1:B:445:CYS:HB3	2.03	0.41
1:B:634:ARG:HG2	1:B:710:THR:OG1	2.20	0.40
1:A:412:LEU:O	1:A:416:VAL:HG23	2.22	0.40
1:B:484:LYS:HE3	1:B:484:LYS:HB3	1.74	0.40
1:A:31:ASP:HA	1:A:32:PRO:HD3	1.85	0.40

*Continued on next page...*



Continued from previous page...

Atom-1	Atom-2	Interatomic distance (Å)	Clash overlap (Å)
1:B:65:ASP:HB3	1:B:473:GLU:HG3	2.03	0.40
1:A:173:ARG:HD2	1:A:187:PHE:HB3	2.02	0.40
1:B:343:HIS:CE1	1:B:408:PHE:HD2	2.40	0.40
1:B:597:GLU:HG2	1:B:647:TRP:CH2	2.57	0.40

There are no symmetry-related clashes.

## 5.3 Torsion angles [i](#)

### 5.3.1 Protein backbone [i](#)

In the following table, the Percentiles column shows the percent Ramachandran outliers of the chain as a percentile score with respect to all X-ray entries followed by that with respect to entries of similar resolution.

The Analysed column shows the number of residues for which the backbone conformation was analysed, and the total number of residues.

Mol	Chain	Analysed	Favoured	Allowed	Outliers	Percentiles	
1	A	714/729 (98%)	701 (98%)	12 (2%)	1 (0%)	51	64
1	B	708/729 (97%)	670 (95%)	31 (4%)	7 (1%)	15	17
All	All	1422/1458 (98%)	1371 (96%)	43 (3%)	8 (1%)	25	31

All (8) Ramachandran outliers are listed below:

Mol	Chain	Res	Type
1	A	207	LYS
1	B	586	GLU
1	B	588	ALA
1	B	207	LYS
1	B	29	ASP
1	B	15	VAL
1	B	204	LEU
1	B	73	ILE

### 5.3.2 Protein sidechains [i](#)

In the following table, the Percentiles column shows the percent sidechain outliers of the chain as a percentile score with respect to all X-ray entries followed by that with respect to entries of similar resolution.

The Analysed column shows the number of residues for which the sidechain conformation was analysed, and the total number of residues.

Mol	Chain	Analysed	Rotameric	Outliers	Percentiles	
1	A	575/586 (98%)	545 (95%)	30 (5%)	23	32
1	B	567/586 (97%)	521 (92%)	46 (8%)	11	15
All	All	1142/1172 (97%)	1066 (93%)	76 (7%)	16	21

All (76) residues with a non-rotameric sidechain are listed below:

Mol	Chain	Res	Type
1	A	3	ASP
1	A	11	ARG
1	A	12	ILE
1	A	41	LYS
1	A	49	GLN
1	A	50	ASN
1	A	71	ARG
1	A	76	ILE
1	A	82	ARG
1	A	94	GLU
1	A	129	ASN
1	A	151	THR
1	A	207	LYS
1	A	208	SER
1	A	211	LEU
1	A	251	THR
1	A	266	ILE
1	A	420	LEU
1	A	455	PHE
1	A	571	ARG
1	A	583	LEU
1	A	595	ARG
1	A	612	TRP
1	A	625	ILE
1	A	655	SER
1	A	662	LEU
1	A	677	VAL
1	A	684	PRO
1	A	688	ASP
1	A	724	ARG
1	B	6	SER
1	B	11	ARG
1	B	30	ILE

*Continued on next page...*

*Continued from previous page...*

<b>Mol</b>	<b>Chain</b>	<b>Res</b>	<b>Type</b>
1	B	41	LYS
1	B	50	ASN
1	B	70	ARG
1	B	72	VAL
1	B	73	ILE
1	B	76	ILE
1	B	119	VAL
1	B	125	ARG
1	B	128	LEU
1	B	129	ASN
1	B	142	LEU
1	B	145	THR
1	B	156	LYS
1	B	181	PRO
1	B	186	SER
1	B	209	THR
1	B	248	GLN
1	B	254	ARG
1	B	284	LYS
1	B	286	LEU
1	B	334	SER
1	B	335	LEU
1	B	356	SER
1	B	377	LYS
1	B	380	ASP
1	B	381	VAL
1	B	390	THR
1	B	455	PHE
1	B	484	LYS
1	B	518	MET
1	B	528	THR
1	B	546	THR
1	B	576	GLU
1	B	583	LEU
1	B	612	TRP
1	B	620	SER
1	B	621	LYS
1	B	631	MET
1	B	659	ARG
1	B	664	ARG
1	B	671	ARG
1	B	690	ILE

*Continued on next page...*

*Continued from previous page...*

Mol	Chain	Res	Type
1	B	724	ARG

Some sidechains can be flipped to improve hydrogen bonding and reduce clashes. All (14) such sidechains are listed below:

Mol	Chain	Res	Type
1	A	9	ASN
1	A	49	GLN
1	A	63	GLN
1	A	196	GLN
1	A	234	ASN
1	A	340	ASN
1	A	382	ASN
1	B	21	ASN
1	B	340	ASN
1	B	382	ASN
1	B	495	HIS
1	B	532	GLN
1	B	672	GLN
1	B	673	ASN

### 5.3.3 RNA [i](#)

There are no RNA molecules in this entry.

### 5.4 Non-standard residues in protein, DNA, RNA chains [i](#)

There are no non-standard protein/DNA/RNA residues in this entry.

### 5.5 Carbohydrates [i](#)

There are no carbohydrates in this entry.

### 5.6 Ligand geometry [i](#)

Of 9 ligands modelled in this entry, 4 are monoatomic - leaving 5 for Mogul analysis.

In the following table, the Counts columns list the number of bonds (or angles) for which Mogul statistics could be retrieved, the number of bonds (or angles) that are observed in the model and the number of bonds (or angles) that are defined in the Chemical Component Dictionary. The

Link column lists molecule types, if any, to which the group is linked. The Z score for a bond length (or angle) is the number of standard deviations the observed value is removed from the expected value. A bond length (or angle) with  $|Z| > 2$  is considered an outlier worth inspection. RMSZ is the root-mean-square of all Z scores of the bond lengths (or angles).

Mol	Type	Chain	Res	Link	Bond lengths			Bond angles		
					Counts	RMSZ	# Z  > 2	Counts	RMSZ	# Z  > 2
3	MLT	B	901	2	2,8,8	0.70	0	3,10,10	4.15	2 (66%)
5	EPE	B	6000	-	15,15,15	0.76	1 (6%)	18,20,20	2.47	7 (38%)
5	EPE	A	5000	-	15,15,15	1.34	2 (13%)	18,20,20	2.27	8 (44%)
4	COA	A	800	-	41,50,50	1.82	2 (4%)	52,75,75	2.18	14 (26%)
3	MLT	A	900	2	2,8,8	0.98	0	3,10,10	5.30	3 (100%)

In the following table, the Chirals column lists the number of chiral outliers, the number of chiral centers analysed, the number of these observed in the model and the number defined in the Chemical Component Dictionary. Similar counts are reported in the Torsion and Rings columns. '-' means no outliers of that kind were identified.

Mol	Type	Chain	Res	Link	Chirals	Torsions	Rings
3	MLT	B	901	2	1/1/3/3	2/2/8/8	-
5	EPE	B	6000	-	-	3/9/19/19	0/1/1/1
5	EPE	A	5000	-	-	2/9/19/19	0/1/1/1
4	COA	A	800	-	-	16/44/64/64	0/3/3/3
3	MLT	A	900	2	1/1/3/3	2/2/8/8	-

All (5) bond length outliers are listed below:

Mol	Chain	Res	Type	Atoms	Z	Observed(Å)	Ideal(Å)
4	A	800	COA	O9P-C9P	9.89	1.43	1.23
5	A	5000	EPE	C10-S	3.55	1.82	1.77
4	A	800	COA	C2A-N3A	3.38	1.37	1.32
5	A	5000	EPE	O1S-S	2.61	1.52	1.45
5	B	6000	EPE	C10-S	2.19	1.80	1.77

All (34) bond angle outliers are listed below:

Mol	Chain	Res	Type	Atoms	Z	Observed(°)	Ideal(°)
4	A	800	COA	C7P-N8P-C9P	8.53	137.81	122.59
3	A	900	MLT	C3-C2-C1	-8.28	100.56	111.10
5	B	6000	EPE	O1S-S-C10	7.11	115.48	106.92
3	B	901	MLT	C3-C2-C1	-6.34	103.02	111.10
4	A	800	COA	N3A-C2A-N1A	-5.50	120.08	128.68

*Continued on next page...*

*Continued from previous page...*

Mol	Chain	Res	Type	Atoms	Z	Observed(°)	Ideal(°)
4	A	800	COA	C6P-C7P-N8P	4.20	120.38	111.90
5	A	5000	EPE	C7-N4-C3	4.18	121.92	111.23
5	A	5000	EPE	C5-N4-C3	3.98	117.80	108.83
4	A	800	COA	C1B-N9A-C4A	-3.49	120.50	126.64
5	B	6000	EPE	C5-N4-C3	3.46	116.62	108.83
5	A	5000	EPE	C9-N1-C2	3.40	119.92	111.23
5	B	6000	EPE	C7-N4-C5	3.32	119.72	111.23
5	A	5000	EPE	C7-N4-C5	3.25	119.56	111.23
4	A	800	COA	C5A-C6A-N6A	3.25	125.29	120.35
5	B	6000	EPE	C6-N1-C2	3.15	115.91	108.83
4	A	800	COA	C4A-C5A-N7A	-3.14	106.13	109.40
4	A	800	COA	O5P-C5P-C6P	-3.01	116.51	122.02
4	A	800	COA	C6P-C5P-N4P	2.97	121.43	116.42
3	A	900	MLT	O3-C2-C3	2.90	114.86	108.50
5	B	6000	EPE	O3S-S-C10	-2.89	101.10	105.77
5	A	5000	EPE	O3S-S-O2S	-2.82	104.38	111.27
4	A	800	COA	O6A-CCP-CBP	2.80	115.05	110.55
3	B	901	MLT	O3-C2-C1	-2.75	103.38	111.66
4	A	800	COA	OAP-CAP-C9P	2.69	122.35	109.42
3	A	900	MLT	O3-C2-C1	-2.68	103.59	111.66
4	A	800	COA	C2A-N1A-C6A	2.62	123.23	118.75
4	A	800	COA	CAP-C9P-N8P	2.52	121.59	116.58
4	A	800	COA	C7P-C6P-C5P	2.44	116.43	112.36
5	A	5000	EPE	C6-N1-C2	2.39	114.22	108.83
4	A	800	COA	CDP-CBP-CAP	2.38	112.95	108.82
5	B	6000	EPE	C7-N4-C3	2.37	117.29	111.23
5	A	5000	EPE	C9-N1-C6	2.37	117.28	111.23
5	B	6000	EPE	C5-C6-N1	-2.07	106.39	110.64
5	A	5000	EPE	C2-C3-N4	2.01	114.77	110.64

All (2) chirality outliers are listed below:

Mol	Chain	Res	Type	Atom
3	B	901	MLT	C2
3	A	900	MLT	C2

All (25) torsion outliers are listed below:

Mol	Chain	Res	Type	Atoms
5	B	6000	EPE	S-C10-C9-N1
3	B	901	MLT	O3-C2-C3-C4
4	A	800	COA	P1A-O3A-P2A-O6A

*Continued on next page...*

*Continued from previous page...*

Mol	Chain	Res	Type	Atoms
4	A	800	COA	CCP-O6A-P2A-O4A
4	A	800	COA	CCP-O6A-P2A-O5A
4	A	800	COA	C9P-CAP-CBP-CCP
4	A	800	COA	C9P-CAP-CBP-CDP
4	A	800	COA	C9P-CAP-CBP-CEP
4	A	800	COA	CAP-C9P-N8P-C7P
4	A	800	COA	O9P-C9P-N8P-C7P
4	A	800	COA	C5P-C6P-C7P-N8P
4	A	800	COA	C6P-C5P-N4P-C3P
4	A	800	COA	O5P-C5P-N4P-C3P
3	A	900	MLT	C1-C2-C3-C4
3	A	900	MLT	O3-C2-C3-C4
4	A	800	COA	C6P-C7P-N8P-C9P
5	A	5000	EPE	C8-C7-N4-C3
3	B	901	MLT	C1-C2-C3-C4
5	B	6000	EPE	C10-C9-N1-C6
5	A	5000	EPE	N4-C7-C8-O8
4	A	800	COA	C3B-O3B-P3B-O9A
4	A	800	COA	O9P-C9P-CAP-CBP
5	B	6000	EPE	C10-C9-N1-C2
4	A	800	COA	N8P-C9P-CAP-CBP
4	A	800	COA	CCP-O6A-P2A-O3A

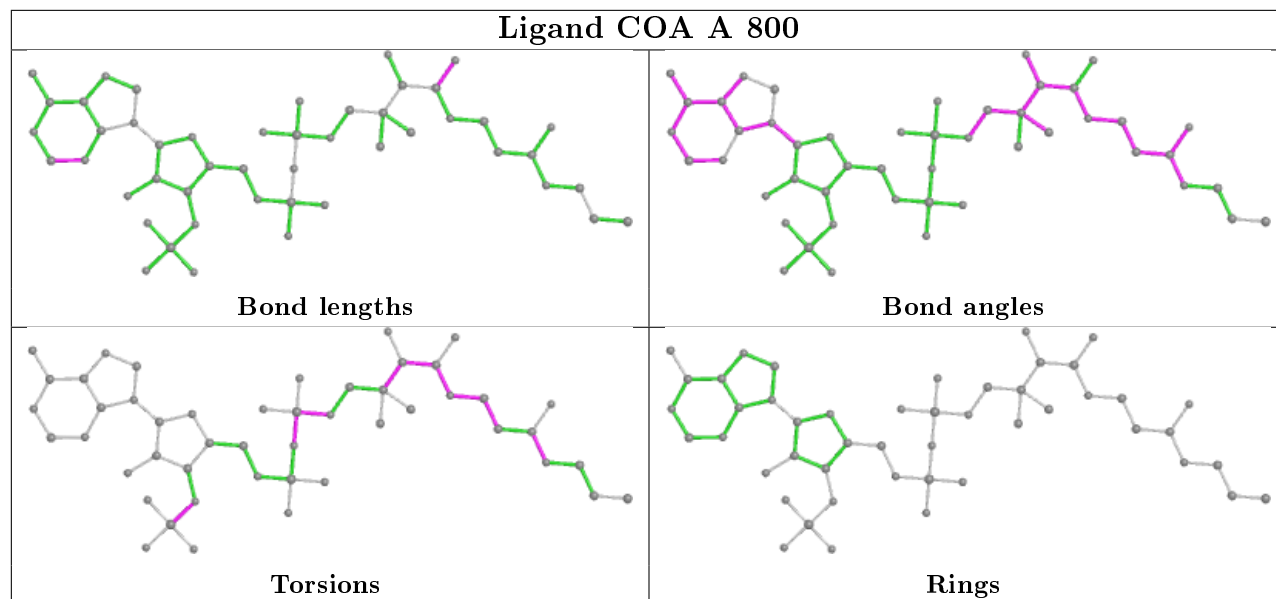
There are no ring outliers.

3 monomers are involved in 22 short contacts:

Mol	Chain	Res	Type	Clashes	Symm-Clashes
5	B	6000	EPE	1	0
5	A	5000	EPE	1	0
4	A	800	COA	20	0

The following is a two-dimensional graphical depiction of Mogul quality analysis of bond lengths, bond angles, torsion angles, and ring geometry for all instances of the Ligand of Interest. In addition, ligands with molecular weight > 250 and outliers as shown on the validation Tables will also be included. For torsion angles, if less than 5% of the Mogul distribution of torsion angles is within 10 degrees of the torsion angle in question, then that torsion angle is considered an outlier. Any bond that is central to one or more torsion angles identified as an outlier by Mogul will be highlighted in the graph. For rings, the root-mean-square deviation (RMSD) between the ring in question and similar rings identified by Mogul is calculated over all ring torsion angles. If the average RMSD is greater than 60 degrees and the minimal RMSD between the ring in question and any Mogul-identified rings is also greater than 60 degrees, then that ring is considered an outlier. The outliers are highlighted in purple. The color gray indicates Mogul did not find sufficient

equivalents in the CSD to analyse the geometry.



## 5.7 Other polymers [i](#)

There are no such residues in this entry.

## 5.8 Polymer linkage issues [i](#)

There are no chain breaks in this entry.



## 6 Fit of model and data

### 6.1 Protein, DNA and RNA chains

In the following table, the column labelled ‘#RSRZ> 2’ contains the number (and percentage) of RSRZ outliers, followed by percent RSRZ outliers for the chain as percentile scores relative to all X-ray entries and entries of similar resolution. The OWAB column contains the minimum, median, 95<sup>th</sup> percentile and maximum values of the occupancy-weighted average B-factor per residue. The column labelled ‘Q< 0.9’ lists the number of (and percentage) of residues with an average occupancy less than 0.9.

Mol	Chain	Analysed	<RSRZ>	#RSRZ>2	OWAB(Å <sup>2</sup> )	Q<0.9
1	A	720/729 (98%)	0.19	18 (2%) 57 64	31, 38, 52, 75	1 (0%)
1	B	714/729 (97%)	0.57	80 (11%) 5 7	28, 39, 50, 64	0
All	All	1434/1458 (98%)	0.38	98 (6%) 17 22	28, 38, 50, 75	1 (0%)

All (98) RSRZ outliers are listed below:

Mol	Chain	Res	Type	RSRZ
1	B	205	PRO	6.4
1	B	247	SER	5.1
1	B	204	LEU	4.9
1	B	251	THR	4.6
1	B	245	PRO	4.4
1	B	252	THR	4.4
1	B	588	ALA	4.2
1	B	674	ALA	4.1
1	B	679	TYR	4.0
1	B	248	GLN	4.0
1	B	160	TYR	3.9
1	B	38	GLY	3.9
1	B	665	MET	3.8
1	B	678	ALA	3.8
1	B	2	THR	3.7
1	B	5	VAL	3.7
1	B	255	ALA	3.6
1	B	11	ARG	3.6
1	B	169	ILE	3.5
1	B	158	PRO	3.5
1	B	187	PHE	3.5
1	B	203	ALA	3.5
1	A	327	GLN	3.5
1	B	243	ILE	3.4

*Continued on next page...*

*Continued from previous page...*

<b>Mol</b>	<b>Chain</b>	<b>Res</b>	<b>Type</b>	<b>RSRZ</b>
1	B	157	GLY	3.4
1	B	677	VAL	3.3
1	B	607	GLY	3.3
1	B	191	THR	3.3
1	A	726	ALA	3.2
1	B	165	GLY	3.2
1	A	631	MET	3.2
1	B	143	TYR	3.1
1	B	166	ASP	3.1
1	B	684	PRO	3.1
1	B	250	GLY	3.0
1	B	15	VAL	3.0
1	B	168	VAL	3.0
1	B	3	ASP	2.9
1	A	2	THR	2.9
1	B	253	ASP	2.9
1	A	151	THR	2.9
1	B	683	ALA	2.9
1	B	395	ILE	2.8
1	B	4	ARG	2.8
1	B	222	GLY	2.8
1	B	269	ILE	2.8
1	A	152	ASP	2.7
1	B	162	LYS	2.7
1	A	158	PRO	2.7
1	A	154	ALA	2.7
1	B	259	ASP	2.7
1	B	257	VAL	2.7
1	B	686	PHE	2.7
1	B	14	ARG	2.6
1	B	217	PHE	2.6
1	B	148	ILE	2.6
1	B	163	VAL	2.6
1	B	208	SER	2.6
1	B	681	PRO	2.6
1	B	691	ALA	2.6
1	B	689	SER	2.5
1	A	326	GLY	2.5
1	B	244	ASP	2.5
1	B	592	ASP	2.5
1	B	246	GLU	2.5
1	B	249	VAL	2.5

*Continued on next page...*

*Continued from previous page...*

Mol	Chain	Res	Type	RSRZ
1	B	254	ARG	2.4
1	A	328	PHE	2.4
1	B	669	VAL	2.4
1	B	671	ARG	2.4
1	B	355	GLY	2.3
1	B	667	PRO	2.3
1	B	724	ARG	2.3
1	B	171	TYR	2.3
1	B	141	ALA	2.3
1	B	627	ASP	2.3
1	A	460	PHE	2.3
1	B	192	GLY	2.3
1	A	619	CYS	2.2
1	A	635	ALA	2.2
1	B	431	ILE	2.2
1	A	275	SER	2.2
1	A	541	TRP	2.2
1	B	661	SER	2.1
1	B	7	VAL	2.1
1	B	13	ALA	2.1
1	B	626	HIS	2.1
1	A	118	VAL	2.1
1	A	617	VAL	2.1
1	B	172	ALA	2.1
1	B	589	TRP	2.1
1	B	10	LEU	2.1
1	B	221	THR	2.1
1	B	338	VAL	2.1
1	B	690	ILE	2.0
1	B	400	MET	2.0
1	B	164	ARG	2.0
1	A	461	LEU	2.0

## 6.2 Non-standard residues in protein, DNA, RNA chains [i](#)

There are no non-standard protein/DNA/RNA residues in this entry.

## 6.3 Carbohydrates [i](#)

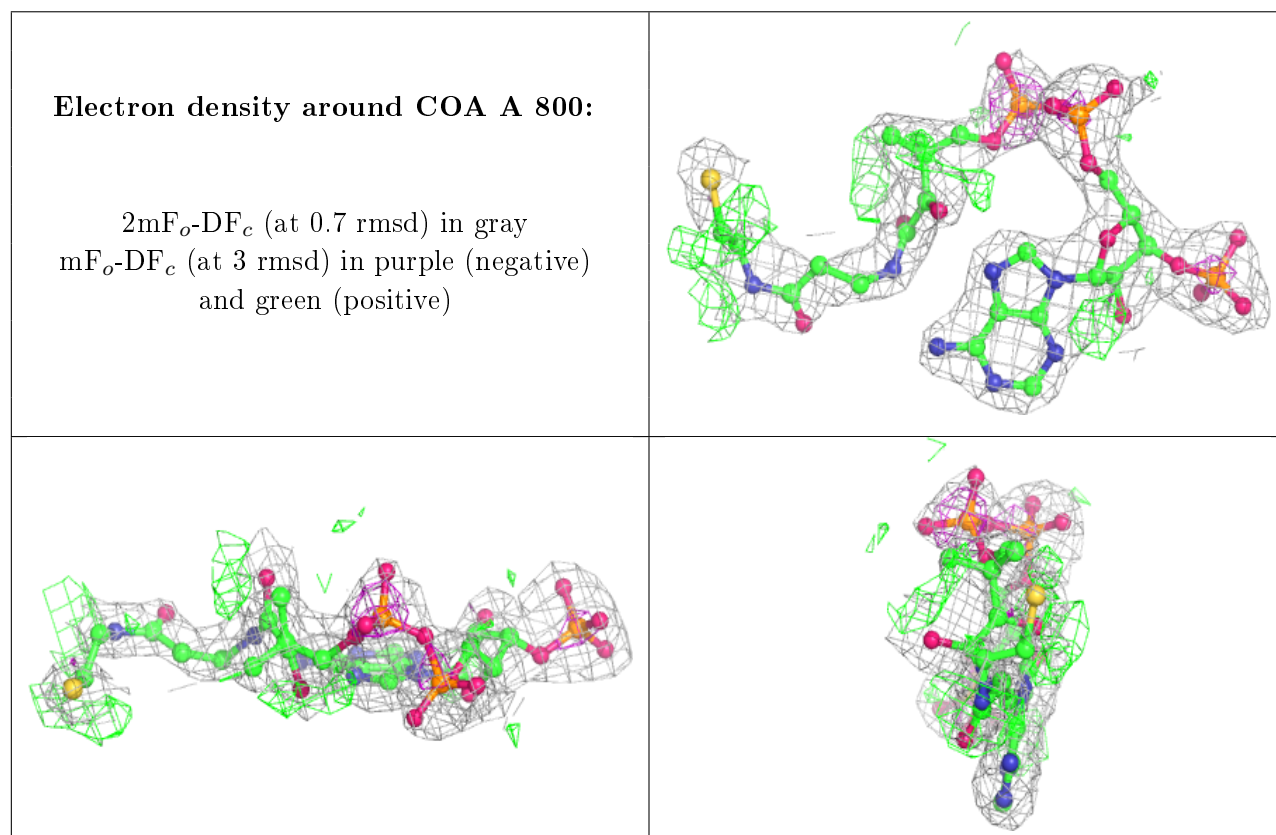
There are no carbohydrates in this entry.

## 6.4 Ligands [i](#)

In the following table, the Atoms column lists the number of modelled atoms in the group and the number defined in the chemical component dictionary. The B-factors column lists the minimum, median, 95<sup>th</sup> percentile and maximum values of B factors of atoms in the group. The column labelled 'Q<0.9' lists the number of atoms with occupancy less than 0.9.

Mol	Type	Chain	Res	Atoms	RSCC	RSR	B-factors(Å <sup>2</sup> )	Q<0.9
4	COA	A	800	48/48	0.90	0.20	23,41,52,56	48
2	MG	B	1003	1/1	0.93	0.29	76,76,76,76	0
5	EPE	A	5000	15/15	0.93	0.13	52,55,61,62	0
5	EPE	B	6000	15/15	0.94	0.24	80,93,97,97	0
3	MLT	B	901	9/9	0.95	0.08	29,37,49,53	0
2	MG	A	1002	1/1	0.95	0.24	40,40,40,40	0
3	MLT	A	900	9/9	0.97	0.12	19,23,43,49	0
2	MG	B	1001	1/1	0.97	0.04	37,37,37,37	0
2	MG	A	1000	1/1	0.98	0.08	24,24,24,24	0

The following is a graphical depiction of the model fit to experimental electron density of all instances of the Ligand of Interest. In addition, ligands with molecular weight > 250 and outliers as shown on the geometry validation Tables will also be included. Each fit is shown from different orientation to approximate a three-dimensional view.



## 6.5 Other polymers

There are no such residues in this entry.