



# Full wwPDB X-ray Structure Validation Report ⓘ

May 13, 2020 – 02:11 pm BST

PDB ID : 6GQM  
Title : Crystal structure of human c-KIT kinase domain in complex with a small molecule inhibitor, AZD3229  
Authors : Schimpl, M.; Hardy, C.J.; Ogg, D.J.; Overman, R.C.; Packer, M.J.; Kettle, J.G.; Anjum, R.; Barry, E.; Bhavsar, D.; Brown, C.; Campbell, A.; Goldberg, K.; Grondine, M.; Guichard, S.; Hunt, T.; Jones, O.; Li, X.; Moleva, O.; Pearson, S.; Shao, W.; Smith, A.; Smith, J.; Stead, D.; Stokes, S.; Tucker, M.; Ye, Y.  
Deposited on : 2018-06-07  
Resolution : 2.00 Å(reported)

This is a Full wwPDB X-ray Structure Validation Report for a publicly released PDB entry.

We welcome your comments at [validation@mail.wwpdb.org](mailto:validation@mail.wwpdb.org)

A user guide is available at

<https://www.wwpdb.org/validation/2017/XrayValidationReportHelp>

with specific help available everywhere you see the ⓘ symbol.

---

The following versions of software and data (see [references ⓘ](#)) were used in the production of this report:

MolProbity : 4.02b-467  
Mogul : 1.8.5 (274361), CSD as541be (2020)  
Xtriage (Phenix) : 1.13  
EDS : 2.11  
buster-report : 1.1.7 (2018)  
Percentile statistics : 20191225.v01 (using entries in the PDB archive December 25th 2019)  
Refmac : 5.8.0158  
CCP4 : 7.0.044 (Gargrove)  
Ideal geometry (proteins) : Engh & Huber (2001)  
Ideal geometry (DNA, RNA) : Parkinson et al. (1996)  
Validation Pipeline (wwPDB-VP) : 2.11

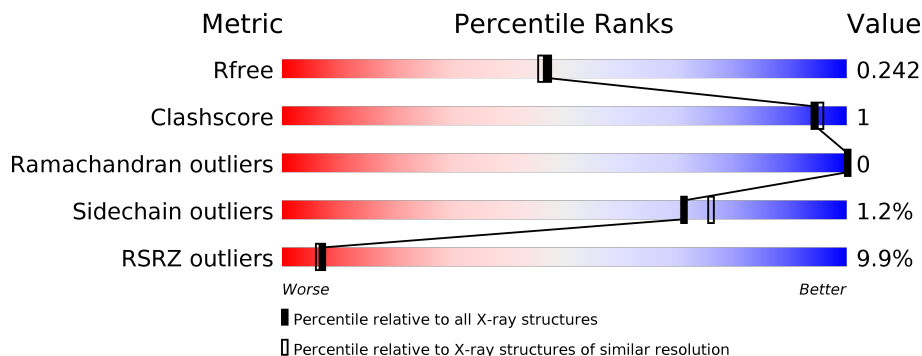
# 1 Overall quality at a glance

The following experimental techniques were used to determine the structure:

*X-RAY DIFFRACTION*


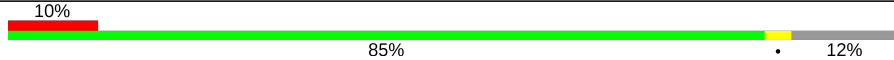
The reported resolution of this entry is 2.00 Å.

Percentile scores (ranging between 0-100) for global validation metrics of the entry are shown in the following graphic. The table shows the number of entries on which the scores are based.



Metric	Whole archive (#Entries)	Similar resolution (#Entries, resolution range(Å))
$R_{free}$	130704	8085 (2.00-2.00)
Clashscore	141614	9178 (2.00-2.00)
Ramachandran outliers	138981	9054 (2.00-2.00)
Sidechain outliers	138945	9053 (2.00-2.00)
RSRZ outliers	127900	7900 (2.00-2.00)

The table below summarises the geometric issues observed across the polymeric chains and their fit to the electron density. The red, orange, yellow and green segments on the lower bar indicate the fraction of residues that contain outliers for  $\geq 3$ , 2, 1 and 0 types of geometric quality criteria respectively. A grey segment represents the fraction of residues that are not modelled. The numeric value for each fraction is indicated below the corresponding segment, with a dot representing fractions  $\leq 5\%$ . The upper red bar (where present) indicates the fraction of residues that have poor fit to the electron density. The numeric value is given above the bar.

Mol	Chain	Length	Quality of chain
1	A	328	
1	B	328	

## 2 Entry composition i

There are 4 unique types of molecules in this entry. The entry contains 4972 atoms, of which 0 are hydrogens and 0 are deuteriums.

In the tables below, the ZeroOcc column contains the number of atoms modelled with zero occupancy, the AltConf column contains the number of residues with at least one atom in alternate conformation and the Trace column contains the number of residues modelled with at most 2 atoms.

- Molecule 1 is a protein called Mast/stem cell growth factor receptor Kit.

Mol	Chain	Residues	Atoms					ZeroOcc	AltConf	Trace
			Total	C	N	O	S			
1	A	297	Total	C	N	O	S	0	0	0
			2352	1513	389	434	16			
1	B	288	Total	C	N	O	S	0	0	0
			2268	1457	376	419	16			

There are 62 discrepancies between the modelled and reference sequences:

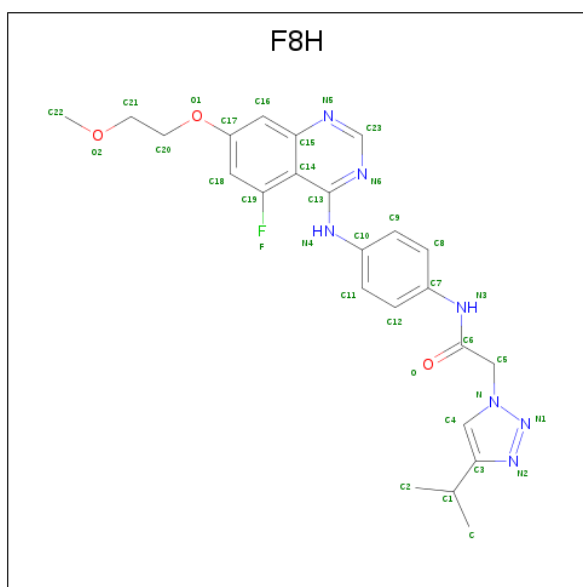
Chain	Residue	Modelled	Actual	Comment	Reference
A	547	GLY	-	expression tag	UNP P10721
A	548	SER	-	expression tag	UNP P10721
A	549	HIS	-	expression tag	UNP P10721
A	550	MET	-	expression tag	UNP P10721
A	563	SER	ILE	engineered mutation	UNP P10721
A	569	SER	VAL	engineered mutation	UNP P10721
A	609	GLN	TYR	engineered mutation	UNP P10721
A	631	SER	LEU	engineered mutation	UNP P10721
A	651	GLU	MET	engineered mutation	UNP P10721
A	662	HIS	ILE	engineered mutation	UNP P10721
A	688	GLU	SER	conflict	UNP P10721
A	690	VAL	ILE	conflict	UNP P10721
A	691	PRO	CYS	conflict	UNP P10721
A	692	TYR	SER	conflict	UNP P10721
A	754	VAL	ALA	conflict	UNP P10721
A	755	ALA	ILE	conflict	UNP P10721
A	756	PRO	MET	conflict	UNP P10721
A	759	LEU	-	insertion	UNP P10721
A	760	TYR	ASP	conflict	UNP P10721
A	761	LYS	GLU	conflict	UNP P10721
A	762	ASP	LEU	conflict	UNP P10721
A	763	PHE	ALA	conflict	UNP P10721
A	765	THR	ASP	conflict	UNP P10721
A	768	HIS	ASP	engineered mutation	UNP P10721
A	804	ASN	ARG	engineered mutation	UNP P10721

*Continued on next page...*

*Continued from previous page...*

Chain	Residue	Modelled	Actual	Comment	Reference
A	825	ASP	VAL	engineered mutation	UNP P10721
A	844	SER	CYS	engineered mutation	UNP P10721
A	890	SER	LEU	engineered mutation	UNP P10721
A	894	TYR	HIS	engineered mutation	UNP P10721
A	912	ASP	LEU	engineered mutation	UNP P10721
A	923	ASP	LEU	engineered mutation	UNP P10721
B	547	GLY	-	expression tag	UNP P10721
B	548	SER	-	expression tag	UNP P10721
B	549	HIS	-	expression tag	UNP P10721
B	550	MET	-	expression tag	UNP P10721
B	563	SER	ILE	engineered mutation	UNP P10721
B	569	SER	VAL	engineered mutation	UNP P10721
B	609	GLN	TYR	engineered mutation	UNP P10721
B	631	SER	LEU	engineered mutation	UNP P10721
B	651	GLU	MET	engineered mutation	UNP P10721
B	662	HIS	ILE	engineered mutation	UNP P10721
B	688	GLU	SER	conflict	UNP P10721
B	690	VAL	ILE	conflict	UNP P10721
B	691	PRO	CYS	conflict	UNP P10721
B	692	TYR	SER	conflict	UNP P10721
B	754	VAL	ALA	conflict	UNP P10721
B	755	ALA	ILE	conflict	UNP P10721
B	756	PRO	MET	conflict	UNP P10721
B	759	LEU	-	insertion	UNP P10721
B	760	TYR	ASP	conflict	UNP P10721
B	761	LYS	GLU	conflict	UNP P10721
B	762	ASP	LEU	conflict	UNP P10721
B	763	PHE	ALA	conflict	UNP P10721
B	765	THR	ASP	conflict	UNP P10721
B	768	HIS	ASP	engineered mutation	UNP P10721
B	804	ASN	ARG	engineered mutation	UNP P10721
B	825	ASP	VAL	engineered mutation	UNP P10721
B	844	SER	CYS	engineered mutation	UNP P10721
B	890	SER	LEU	engineered mutation	UNP P10721
B	894	TYR	HIS	engineered mutation	UNP P10721
B	912	ASP	LEU	engineered mutation	UNP P10721
B	923	ASP	LEU	engineered mutation	UNP P10721

- Molecule 2 is {N}-[4-[[5-fluoranyl-7-(2-methoxyethoxy)quinazolin-4-yl]amino]phenyl]-2-(4-pyridin-2-yl-1,2,3-triazol-1-yl)ethanamide (three-letter code: F8H) (formula: C<sub>24</sub>H<sub>26</sub>FN<sub>7</sub>O<sub>3</sub>) (labeled as "Ligand of Interest" by author).



Mol	Chain	Residues	Atoms				ZeroOcc	AltConf	
2	A	1	Total	C	F	N	O	0	0
			35	24	1	7	3		
2	B	1	Total	C	F	N	O	0	0
			35	24	1	7	3		

- Molecule 3 is CHLORIDE ION (three-letter code: CL) (formula: Cl).

Mol	Chain	Residues	Atoms		ZeroOcc	AltConf
3	A	2	Total	Cl	0	0
			2	2		

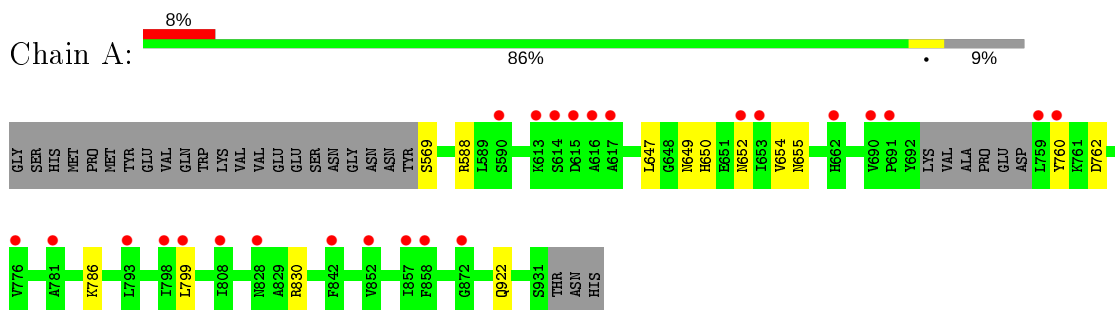
- Molecule 4 is water.

Mol	Chain	Residues	Atoms		ZeroOcc	AltConf
4	A	175	Total	O	0	0
			175	175		
4	B	105	Total	O	0	0
			105	105		

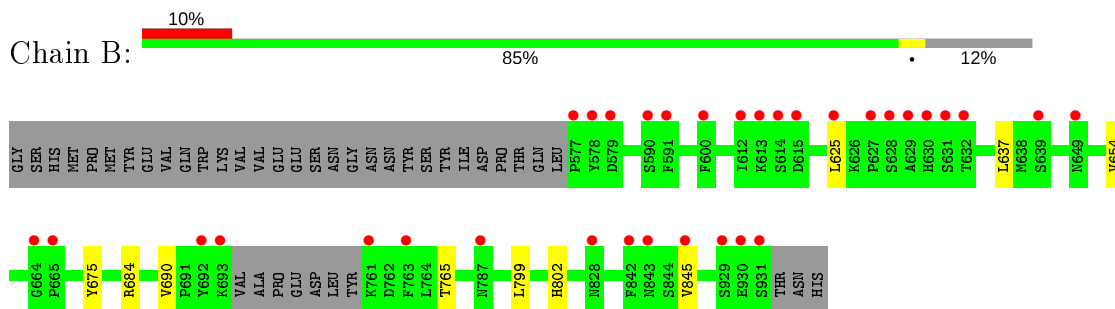
### 3 Residue-property plots [i](#)

These plots are drawn for all protein, RNA and DNA chains in the entry. The first graphic for a chain summarises the proportions of the various outlier classes displayed in the second graphic. The second graphic shows the sequence view annotated by issues in geometry and electron density. Residues are color-coded according to the number of geometric quality criteria for which they contain at least one outlier: green = 0, yellow = 1, orange = 2 and red = 3 or more. A red dot above a residue indicates a poor fit to the electron density ( $RSRZ > 2$ ). Stretches of 2 or more consecutive residues without any outlier are shown as a green connector. Residues present in the sample, but not in the model, are shown in grey.

- Molecule 1: Mast/stem cell growth factor receptor Kit



- Molecule 1: Mast/stem cell growth factor receptor Kit



## 4 Data and refinement statistics i

Property	Value	Source
Space group	P 21 21 21	Depositor
Cell constants a, b, c, $\alpha$ , $\beta$ , $\gamma$	87.97Å 90.18Å 91.15Å 90.00° 90.00° 90.00°	Depositor
Resolution (Å)	40.00 – 2.00 39.61 – 2.00	Depositor EDS
% Data completeness (in resolution range)	99.9 (40.00-2.00) 99.9 (39.61-2.00)	Depositor EDS
$R_{merge}$	0.10	Depositor
$R_{sym}$	(Not available)	Depositor
$\langle I/\sigma(I) \rangle$ <sup>1</sup>	1.47 (at 2.00Å)	Xtriage
Refinement program	BUSTER 2.11.6	Depositor
R, $R_{free}$	0.203 , 0.230 0.214 , 0.242	Depositor DCC
$R_{free}$ test set	2479 reflections (5.00%)	wwPDB-VP
Wilson B-factor (Å <sup>2</sup> )	38.9	Xtriage
Anisotropy	0.452	Xtriage
Bulk solvent $k_{sol}$ (e/Å <sup>3</sup> ), $B_{sol}$ (Å <sup>2</sup> )	0.32 , 40.4	EDS
L-test for twinning <sup>2</sup>	$\langle  L  \rangle = 0.49$ , $\langle L^2 \rangle = 0.32$	Xtriage
Estimated twinning fraction	0.017 for -h,l,k 0.018 for -l,-k,-h 0.009 for k,h,-l 0.000 for k,l,h 0.000 for l,h,k	Xtriage
$F_o, F_c$ correlation	0.96	EDS
Total number of atoms	4972	wwPDB-VP
Average B, all atoms (Å <sup>2</sup> )	51.0	wwPDB-VP

Xtriage's analysis on translational NCS is as follows: *The largest off-origin peak in the Patterson function is 4.73% of the height of the origin peak. No significant pseudotranslation is detected.*

<sup>1</sup>Intensities estimated from amplitudes.

<sup>2</sup>Theoretical values of  $\langle |L| \rangle$ ,  $\langle L^2 \rangle$  for acentric reflections are 0.5, 0.333 respectively for untwinned datasets, and 0.375, 0.2 for perfectly twinned datasets.

## 5 Model quality [i](#)

### 5.1 Standard geometry [i](#)

Bond lengths and bond angles in the following residue types are not validated in this section: F8H, CL

The Z score for a bond length (or angle) is the number of standard deviations the observed value is removed from the expected value. A bond length (or angle) with  $|Z| > 5$  is considered an outlier worth inspection. RMSZ is the root-mean-square of all Z scores of the bond lengths (or angles).

Mol	Chain	Bond lengths		Bond angles	
		RMSZ	# Z  >5	RMSZ	# Z  >5
1	A	0.53	0/2411	0.64	0/3262
1	B	0.50	0/2324	0.63	0/3142
All	All	0.51	0/4735	0.63	0/6404

There are no bond length outliers.

There are no bond angle outliers.

There are no chirality outliers.

There are no planarity outliers.

### 5.2 Too-close contacts [i](#)

In the following table, the Non-H and H(model) columns list the number of non-hydrogen atoms and hydrogen atoms in the chain respectively. The H(added) column lists the number of hydrogen atoms added and optimized by MolProbity. The Clashes column lists the number of clashes within the asymmetric unit, whereas Symm-Clashes lists symmetry related clashes.

Mol	Chain	Non-H	H(model)	H(added)	Clashes	Symm-Clashes
1	A	2352	0	2312	8	0
1	B	2268	0	2224	6	0
2	A	35	0	0	0	0
2	B	35	0	0	0	0
3	A	2	0	0	0	0
4	A	175	0	0	0	0
4	B	105	0	0	0	0
All	All	4972	0	4536	12	0

The all-atom clashscore is defined as the number of clashes found per 1000 atoms (including hydrogen atoms). The all-atom clashscore for this structure is 1.



All (12) close contacts within the same asymmetric unit are listed below, sorted by their clash magnitude.

Atom-1	Atom-2	Interatomic distance (Å)	Clash overlap (Å)
1:A:650:HIS:H	1:A:655:ASN:HD21	1.50	0.60
1:B:654:VAL:HG11	1:B:799:LEU:HD12	1.86	0.57
1:A:654:VAL:HG11	1:A:799:LEU:HD12	1.86	0.57
1:A:760:TYR:O	1:B:684:ARG:HD3	2.09	0.52
1:B:625:LEU:HG	1:B:637:LEU:HD22	1.92	0.51
1:A:650:HIS:H	1:A:655:ASN:ND2	2.09	0.50
1:A:762:ASP:HB2	1:B:684:ARG:HD2	1.97	0.47
1:B:675:TYR:HE2	1:B:802:HIS:HA	1.83	0.44
1:A:654:VAL:CG1	1:A:799:LEU:HD12	2.50	0.42
1:A:650:HIS:HE1	1:A:652:ASN:OD1	2.03	0.41
1:B:690:VAL:O	1:B:765:THR:HA	2.21	0.41
1:A:647:LEU:HA	1:A:786:LYS:HE2	2.02	0.40

There are no symmetry-related clashes.

## 5.3 Torsion angles [i](#)

### 5.3.1 Protein backbone [i](#)

In the following table, the Percentiles column shows the percent Ramachandran outliers of the chain as a percentile score with respect to all X-ray entries followed by that with respect to entries of similar resolution.

The Analysed column shows the number of residues for which the backbone conformation was analysed, and the total number of residues.

Mol	Chain	Analysed	Favoured	Allowed	Outliers	Percentiles	
1	A	293/328 (89%)	288 (98%)	5 (2%)	0	100	100
1	B	284/328 (87%)	279 (98%)	5 (2%)	0	100	100
All	All	577/656 (88%)	567 (98%)	10 (2%)	0	100	100

There are no Ramachandran outliers to report.

### 5.3.2 Protein sidechains [i](#)

In the following table, the Percentiles column shows the percent sidechain outliers of the chain as a percentile score with respect to all X-ray entries followed by that with respect to entries of similar resolution.

The Analysed column shows the number of residues for which the sidechain conformation was analysed, and the total number of residues.

Mol	Chain	Analysed	Rotameric	Outliers	Percentiles	
1	A	254/286 (89%)	249 (98%)	5 (2%)	55	58
1	B	243/286 (85%)	242 (100%)	1 (0%)	91	93
All	All	497/572 (87%)	491 (99%)	6 (1%)	71	76

All (6) residues with a non-rotameric sidechain are listed below:

Mol	Chain	Res	Type
1	A	569	SER
1	A	588	ARG
1	A	649	ASN
1	A	830	ARG
1	A	922	GLN
1	B	845	VAL

Some sidechains can be flipped to improve hydrogen bonding and reduce clashes. All (3) such sidechains are listed below:

Mol	Chain	Res	Type
1	A	650	HIS
1	A	655	ASN
1	A	662	HIS

### 5.3.3 RNA [i](#)

There are no RNA molecules in this entry.

## 5.4 Non-standard residues in protein, DNA, RNA chains [i](#)

There are no non-standard protein/DNA/RNA residues in this entry.

## 5.5 Carbohydrates [i](#)

There are no carbohydrates in this entry.

## 5.6 Ligand geometry [i](#)

Of 4 ligands modelled in this entry, 2 are monoatomic - leaving 2 for Mogul analysis.

In the following table, the Counts columns list the number of bonds (or angles) for which Mogul statistics could be retrieved, the number of bonds (or angles) that are observed in the model and the number of bonds (or angles) that are defined in the Chemical Component Dictionary. The Link column lists molecule types, if any, to which the group is linked. The Z score for a bond length (or angle) is the number of standard deviations the observed value is removed from the expected value. A bond length (or angle) with  $|Z| > 2$  is considered an outlier worth inspection. RMSZ is the root-mean-square of all Z scores of the bond lengths (or angles).

Mol	Type	Chain	Res	Link	Bond lengths			Bond angles		
					Counts	RMSZ	# Z  > 2	Counts	RMSZ	# Z  > 2
2	F8H	A	1001	-	37,38,38	0.50	0	44,52,52	0.69	0
2	F8H	B	1001	-	37,38,38	0.53	0	44,52,52	0.59	0

In the following table, the Chirals column lists the number of chiral outliers, the number of chiral centers analysed, the number of these observed in the model and the number defined in the Chemical Component Dictionary. Similar counts are reported in the Torsion and Rings columns. '-' means no outliers of that kind were identified.

Mol	Type	Chain	Res	Link	Chirals	Torsions	Rings
2	F8H	A	1001	-	-	2/20/21/21	0/4/4/4
2	F8H	B	1001	-	-	2/20/21/21	0/4/4/4

There are no bond length outliers.

There are no bond angle outliers.

There are no chirality outliers.

All (4) torsion outliers are listed below:

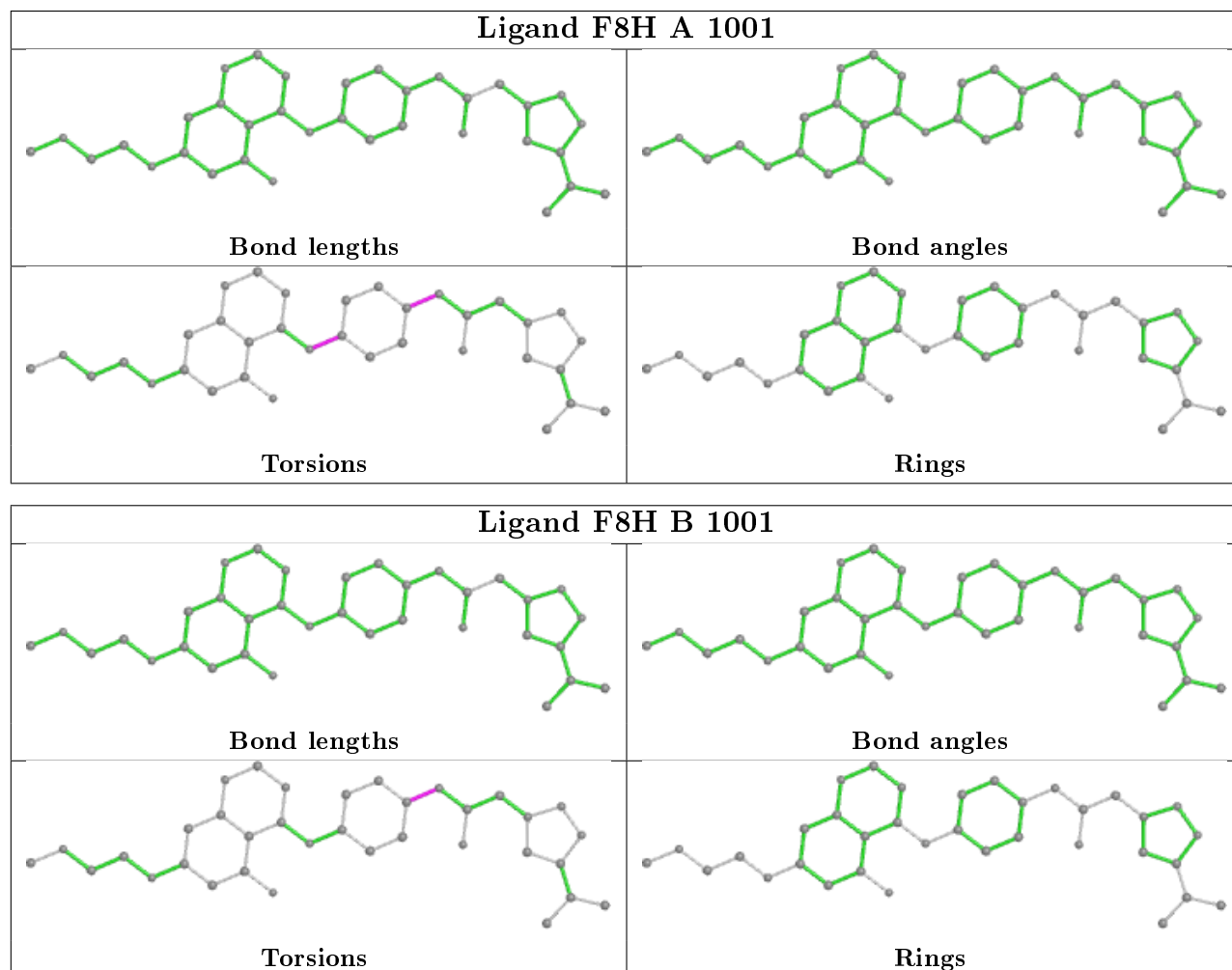
Mol	Chain	Res	Type	Atoms
2	B	1001	F8H	C8-C7-N3-C6
2	A	1001	F8H	C8-C7-N3-C6
2	B	1001	F8H	C12-C7-N3-C6
2	A	1001	F8H	C11-C10-N4-C13

There are no ring outliers.

No monomer is involved in short contacts.

The following is a two-dimensional graphical depiction of Mogul quality analysis of bond lengths, bond angles, torsion angles, and ring geometry for all instances of the Ligand of Interest. In addition, ligands with molecular weight  $> 250$  and outliers as shown on the validation Tables will also be included. For torsion angles, if less than 5% of the Mogul distribution of torsion angles is within 10 degrees of the torsion angle in question, then that torsion angle is considered an outlier. Any bond that is central to one or more torsion angles identified as an outlier by Mogul will be highlighted in the graph. For rings, the root-mean-square deviation (RMSD) between the ring

in question and similar rings identified by Mogul is calculated over all ring torsion angles. If the average RMSD is greater than 60 degrees and the minimal RMSD between the ring in question and any Mogul-identified rings is also greater than 60 degrees, then that ring is considered an outlier. The outliers are highlighted in purple. The color gray indicates Mogul did not find sufficient equivalents in the CSD to analyse the geometry.



## 5.7 Other polymers [\(i\)](#)

There are no such residues in this entry.

## 5.8 Polymer linkage issues [\(i\)](#)

There are no chain breaks in this entry.

## 6 Fit of model and data

### 6.1 Protein, DNA and RNA chains

In the following table, the column labelled ‘#RSRZ> 2’ contains the number (and percentage) of RSRZ outliers, followed by percent RSRZ outliers for the chain as percentile scores relative to all X-ray entries and entries of similar resolution. The OWAB column contains the minimum, median, 95<sup>th</sup> percentile and maximum values of the occupancy-weighted average B-factor per residue. The column labelled ‘Q< 0.9’ lists the number of (and percentage) of residues with an average occupancy less than 0.9.

Mol	Chain	Analysed	<RSRZ>	#RSRZ>2	OWAB(Å <sup>2</sup> )	Q<0.9
1	A	297/328 (90%)	0.55	25 (8%) <b>11</b> <b>10</b>	26, 41, 77, 108	0
1	B	288/328 (87%)	0.78	33 (11%) <b>4</b> <b>4</b>	30, 55, 94, 119	0
All	All	585/656 (89%)	0.66	58 (9%) <b>7</b> <b>6</b>	26, 46, 87, 119	0

All (58) RSRZ outliers are listed below:

Mol	Chain	Res	Type	RSRZ
1	B	692	TYR	6.7
1	B	577	PRO	6.5
1	B	613	LYS	6.2
1	B	578	TYR	4.9
1	B	579	ASP	4.6
1	A	613	LYS	4.5
1	B	845	VAL	4.5
1	A	808	ILE	4.3
1	B	842	PHE	4.2
1	B	665	PRO	4.2
1	A	828	ASN	3.9
1	B	629	ALA	3.8
1	A	760	TYR	3.7
1	A	842	PHE	3.7
1	B	693	LYS	3.7
1	B	649	ASN	3.7
1	B	614	SER	3.7
1	B	761	LYS	3.5
1	A	690	VAL	3.5
1	B	763	PHE	3.5
1	B	600	PHE	3.3
1	A	614	SER	3.3
1	B	590	SER	3.3
1	B	627	PRO	3.2

*Continued on next page...*

*Continued from previous page...*

Mol	Chain	Res	Type	RSRZ
1	A	662	HIS	3.2
1	B	828	ASN	3.1
1	B	615	ASP	3.0
1	A	798	ILE	2.9
1	A	653	ILE	2.9
1	B	630	HIS	2.9
1	B	664	GLY	2.8
1	A	759	LEU	2.8
1	A	615	ASP	2.7
1	B	632	THR	2.6
1	B	931	SER	2.5
1	B	631	SER	2.5
1	A	799	LEU	2.5
1	B	930	GLU	2.5
1	B	639	SER	2.4
1	A	858	PHE	2.4
1	A	857	ILE	2.4
1	B	628	SER	2.3
1	B	929	SER	2.3
1	B	787	ASN	2.3
1	A	616	ALA	2.3
1	B	843	ASN	2.2
1	A	872	GLY	2.2
1	A	617	ALA	2.2
1	A	793	LEU	2.1
1	A	590	SER	2.1
1	A	852	VAL	2.1
1	B	591	PHE	2.1
1	A	652	ASN	2.1
1	A	691	PRO	2.1
1	A	776	VAL	2.0
1	A	781	ALA	2.0
1	B	612	ILE	2.0
1	B	625	LEU	2.0

## 6.2 Non-standard residues in protein, DNA, RNA chains [i](#)

There are no non-standard protein/DNA/RNA residues in this entry.

### 6.3 Carbohydrates [i](#)

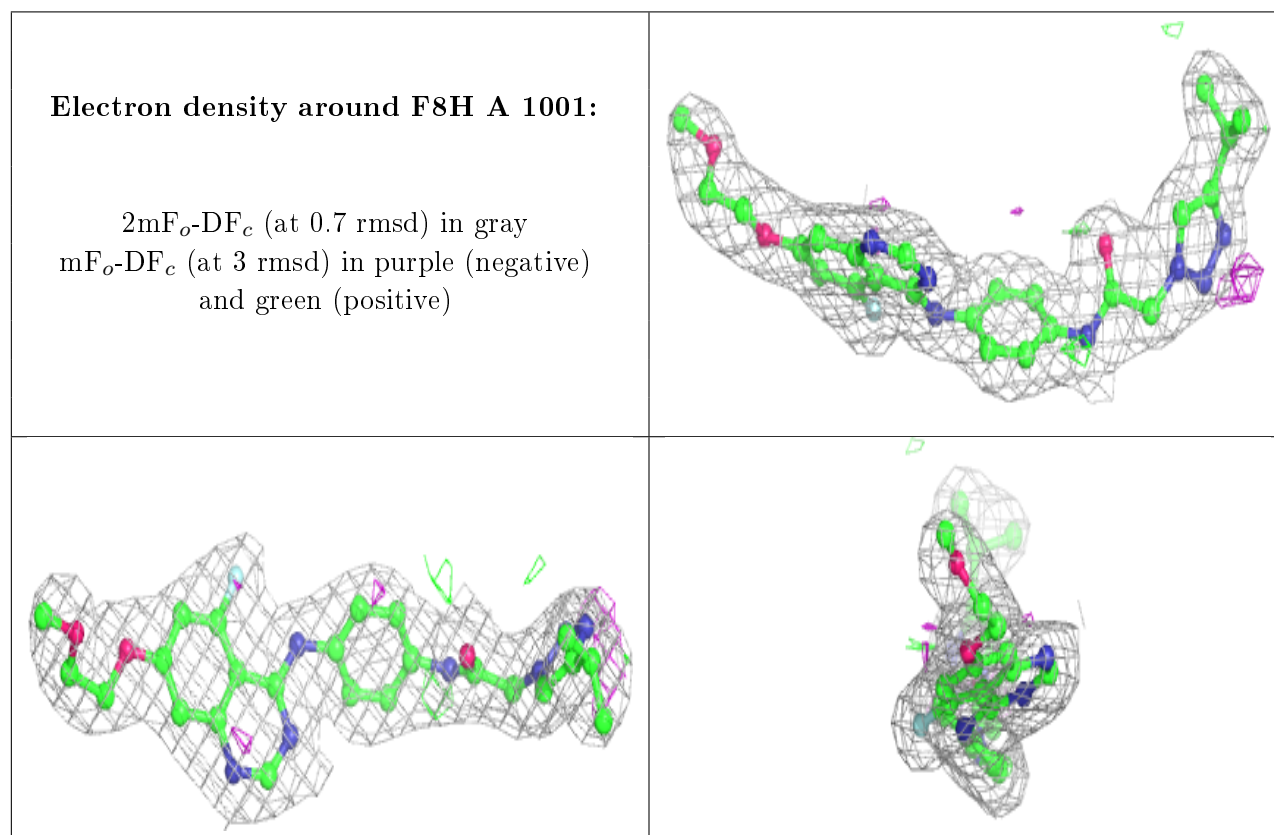
There are no carbohydrates in this entry.

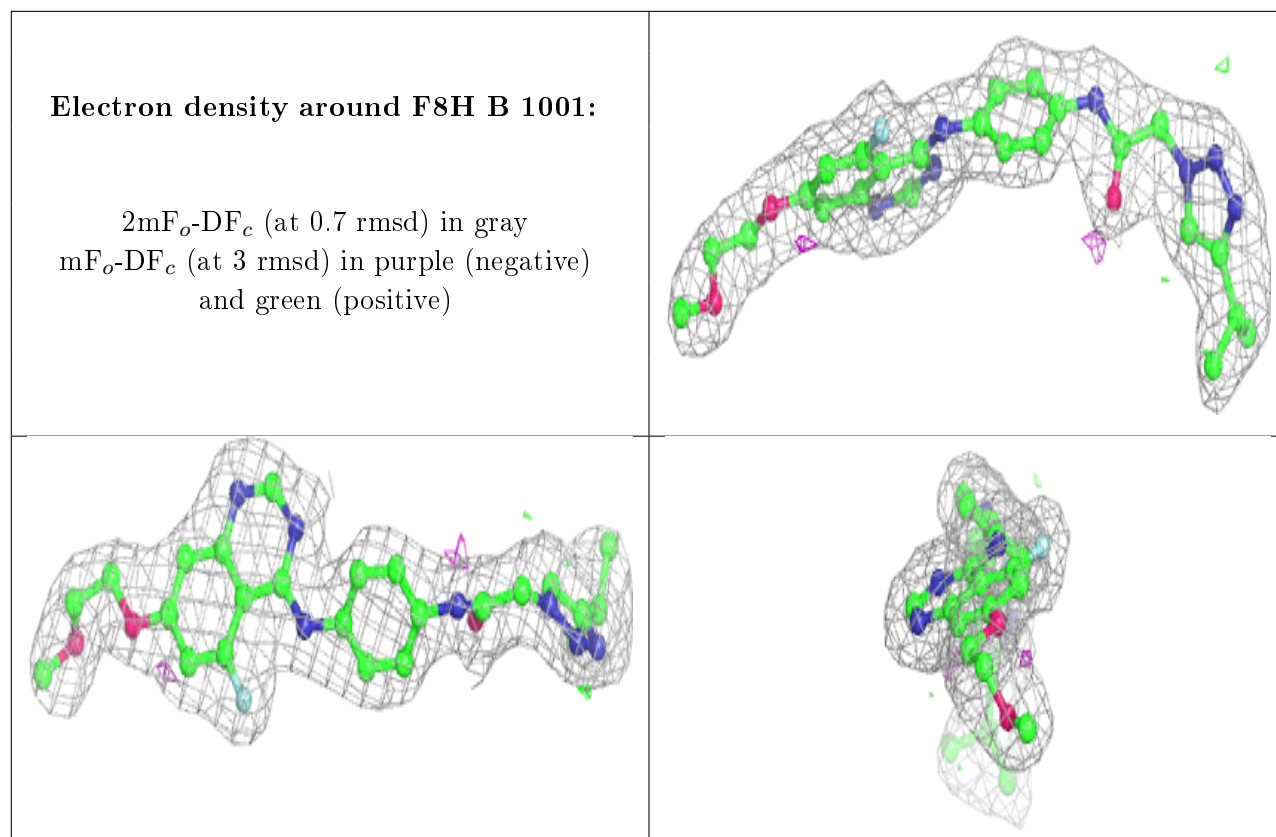
### 6.4 Ligands [i](#)

In the following table, the Atoms column lists the number of modelled atoms in the group and the number defined in the chemical component dictionary. The B-factors column lists the minimum, median, 95<sup>th</sup> percentile and maximum values of B factors of atoms in the group. The column labelled 'Q< 0.9' lists the number of atoms with occupancy less than 0.9.

Mol	Type	Chain	Res	Atoms	RSCC	RSR	B-factors( $\text{\AA}^2$ )	Q<0.9
2	F8H	A	1001	35/35	0.94	0.15	25,34,43,49	0
2	F8H	B	1001	35/35	0.95	0.12	35,40,54,55	0
3	CL	A	1002	1/1	0.98	0.21	30,30,30,30	0
3	CL	A	1003	1/1	0.99	0.18	36,36,36,36	0

The following is a graphical depiction of the model fit to experimental electron density of all instances of the Ligand of Interest. In addition, ligands with molecular weight > 250 and outliers as shown on the geometry validation Tables will also be included. Each fit is shown from different orientation to approximate a three-dimensional view.





## 6.5 Other polymers [i](#)

There are no such residues in this entry.