



Full wwPDB X-ray Structure Validation Report ⓘ

Mar 8, 2018 – 10:31 pm GMT

PDB ID : 5GTZ
Title : Crystal structure of EGFR 696-1022 T790M in complex with JTS-1-39
Authors : Yan, X.E.; Yun, C.H.
Deposited on : 2016-08-24
Resolution : 3.00 Å(reported)

This is a Full wwPDB X-ray Structure Validation Report for a publicly released PDB entry.

We welcome your comments at validation@mail.wwpdb.org

A user guide is available at

<https://www.wwpdb.org/validation/2017/XrayValidationReportHelp>

with specific help available everywhere you see the ⓘ symbol.

The following versions of software and data (see [references ⓘ](#)) were used in the production of this report:

MolProbity : 4.02b-467
Mogul : 1.7.3 (157068), CSD as539be (2018)
Xtriage (Phenix) : 1.13
EDS : trunk30967
Percentile statistics : 20171227.v01 (using entries in the PDB archive December 27th 2017)
Refmac : 5.8.0158
CCP4 : 7.0 (Gargrove)
Ideal geometry (proteins) : Engh & Huber (2001)
Ideal geometry (DNA, RNA) : Parkinson et al. (1996)
Validation Pipeline (wwPDB-VP) : trunk30967

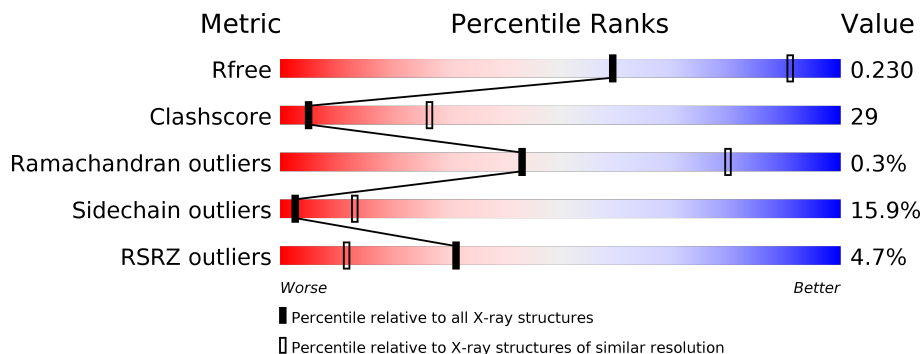
1 Overall quality at a glance

The following experimental techniques were used to determine the structure:

X-RAY DIFFRACTION

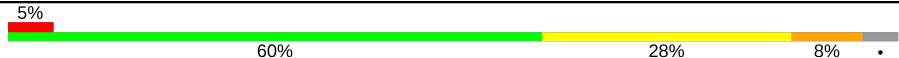
The reported resolution of this entry is 3.00 Å.

Percentile scores (ranging between 0-100) for global validation metrics of the entry are shown in the following graphic. The table shows the number of entries on which the scores are based.



Metric	Whole archive (#Entries)	Similar resolution (#Entries, resolution range(Å))
R_{free}	111664	1851 (3.00-3.00)
Clashscore	122126	2167 (3.00-3.00)
Ramachandran outliers	120053	2101 (3.00-3.00)
Sidechain outliers	120020	2104 (3.00-3.00)
RSRZ outliers	108989	1751 (3.00-3.00)

The table below summarises the geometric issues observed across the polymeric chains and their fit to the electron density. The red, orange, yellow and green segments on the lower bar indicate the fraction of residues that contain outliers for ≥ 3 , 2, 1 and 0 types of geometric quality criteria. A grey segment represents the fraction of residues that are not modelled. The numeric value for each fraction is indicated below the corresponding segment, with a dot representing fractions $\leq 5\%$. The upper red bar (where present) indicates the fraction of residues that have poor fit to the electron density. The numeric value is given above the bar.

Mol	Chain	Length	Quality of chain
1	A	331	

The following table lists non-polymeric compounds, carbohydrate monomers and non-standard residues in protein, DNA, RNA chains that are outliers for geometric or electron-density-fit criteria:

Mol	Type	Chain	Res	Chirality	Geometry	Clashes	Electron density
4	CL	A	1106	-	-	X	-
4	CL	A	1108	-	-	X	-

2 Entry composition i

There are 5 unique types of molecules in this entry. The entry contains 2648 atoms, of which 0 are hydrogens and 0 are deuteriums.

In the tables below, the ZeroOcc column contains the number of atoms modelled with zero occupancy, the AltConf column contains the number of residues with at least one atom in alternate conformation and the Trace column contains the number of residues modelled with at most 2 atoms.

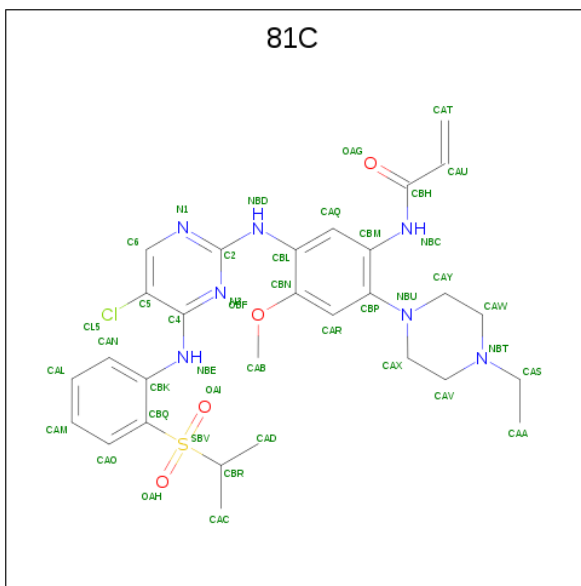
- Molecule 1 is a protein called Epidermal growth factor receptor.

Mol	Chain	Residues	Atoms					ZeroOcc	AltConf	Trace
			Total	C	N	O	S			
1	A	317	2535	1631	425	460	19	9	1	0

There are 5 discrepancies between the modelled and reference sequences:

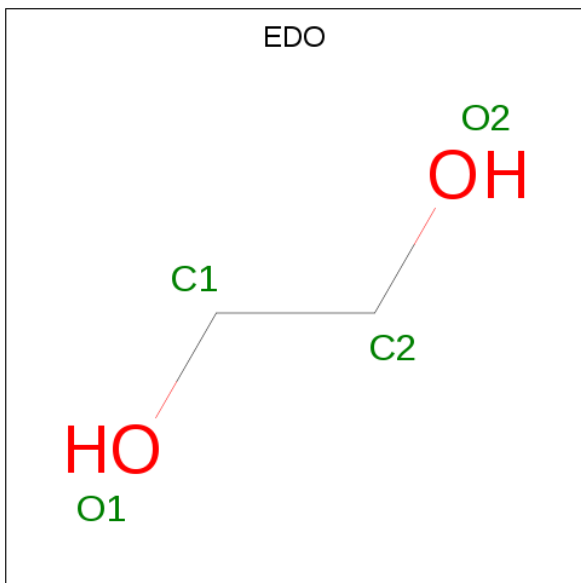
Chain	Residue	Modelled	Actual	Comment	Reference
A	692	GLY	-	expression tag	UNP P00533
A	693	ALA	-	expression tag	UNP P00533
A	694	MET	-	expression tag	UNP P00533
A	695	GLY	-	expression tag	UNP P00533
A	790	MET	THR	engineered mutation	UNP P00533

- Molecule 2 is N-[5-[[5-chloranyl-4-[(2-propan-2-ylsulfonylphenyl)amino]pyrimidin-2-yl]amino]-2-(4-ethylpiperazin-1-yl)-4-methoxy-phenyl]prop-2-enamide (three-letter code: 81C) (formula: $C_{29}H_{36}ClN_7O_4S$).



Mol	Chain	Residues	Atoms					ZeroOcc	AltConf	
			Total	C	Cl	N	O			S
2	A	1	42	29	1	7	4	1	0	0

- Molecule 3 is 1,2-ETHANEDIOL (three-letter code: EDO) (formula: C₂H₆O₂).



Mol	Chain	Residues	Atoms			ZeroOcc	AltConf
			Total	C	O		
3	A	1	4	2	2	0	0
3	A	1	4	2	2	0	0
3	A	1	4	2	2	0	0
3	A	1	4	2	2	0	0

- Molecule 4 is CHLORIDE ION (three-letter code: CL) (formula: Cl).

Mol	Chain	Residues	Atoms	ZeroOcc	AltConf
4	A	5	Total Cl 5 5	0	0

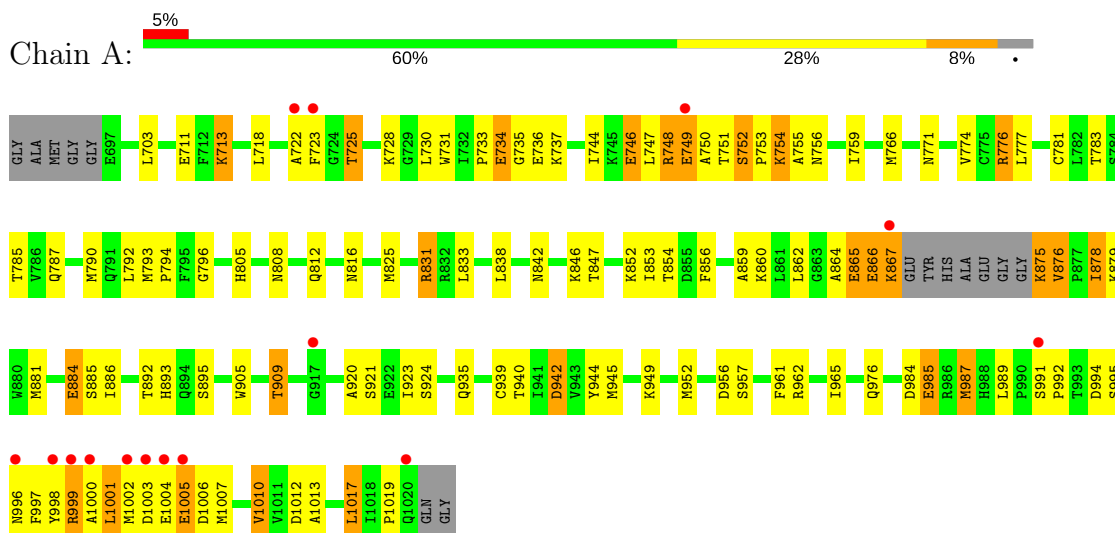
- Molecule 5 is water.

Mol	Chain	Residues	Atoms	ZeroOcc	AltConf
5	A	50	Total O 50 50	0	0

3 Residue-property plots [i](#)

These plots are drawn for all protein, RNA and DNA chains in the entry. The first graphic for a chain summarises the proportions of the various outlier classes displayed in the second graphic. The second graphic shows the sequence view annotated by issues in geometry and electron density. Residues are color-coded according to the number of geometric quality criteria for which they contain at least one outlier: green = 0, yellow = 1, orange = 2 and red = 3 or more. A red dot above a residue indicates a poor fit to the electron density ($RSRZ > 2$). Stretches of 2 or more consecutive residues without any outlier are shown as a green connector. Residues present in the sample, but not in the model, are shown in grey.

- Molecule 1: Epidermal growth factor receptor



4 Data and refinement statistics

Property	Value	Source
Space group	I 2 3	Depositor
Cell constants a, b, c, α , β , γ	146.18Å 146.18Å 146.18Å 90.00° 90.00° 90.00°	Depositor
Resolution (Å)	42.20 – 3.00 42.20 – 3.00	Depositor EDS
% Data completeness (in resolution range)	100.0 (42.20-3.00) 100.0 (42.20-3.00)	Depositor EDS
R_{merge}	(Not available)	Depositor
R_{sym}	(Not available)	Depositor
$\langle I/\sigma(I) \rangle$ ¹	2.14 (at 3.01Å)	Xtrriage
Refinement program	PHENIX (dev_2400)	Depositor
R, R_{free}	0.189 , 0.230 0.188 , 0.230	Depositor DCC
R_{free} test set	505 reflections (4.77%)	wwPDB-VP
Wilson B-factor (Å ²)	65.2	Xtrriage
Anisotropy	0.000	Xtrriage
Bulk solvent k_{sol} (e/Å ³), B_{sol} (Å ²)	0.32 , 48.8	EDS
L-test for twinning ²	$\langle L \rangle = 0.50$, $\langle L^2 \rangle = 0.33$	Xtrriage
Estimated twinning fraction	0.033 for -l,-k,-h	Xtrriage
F_o, F_c correlation	0.94	EDS
Total number of atoms	2648	wwPDB-VP
Average B, all atoms (Å ²)	61.0	wwPDB-VP

Xtrriage's analysis on translational NCS is as follows: *The largest off-origin peak in the Patterson function is 3.17% of the height of the origin peak. No significant pseudotranslation is detected.*

¹Intensities estimated from amplitudes.

²Theoretical values of $\langle |L| \rangle$, $\langle L^2 \rangle$ for acentric reflections are 0.5, 0.333 respectively for untwinned datasets, and 0.375, 0.2 for perfectly twinned datasets.

5 Model quality [i](#)

5.1 Standard geometry [i](#)

Bond lengths and bond angles in the following residue types are not validated in this section: 81C, EDO, CL

The Z score for a bond length (or angle) is the number of standard deviations the observed value is removed from the expected value. A bond length (or angle) with $|Z| > 5$ is considered an outlier worth inspection. RMSZ is the root-mean-square of all Z scores of the bond lengths (or angles).

Mol	Chain	Bond lengths		Bond angles	
		RMSZ	# Z >5	RMSZ	# Z >5
1	A	0.47	0/2592	0.60	0/3507

There are no bond length outliers.

There are no bond angle outliers.

There are no chirality outliers.

There are no planarity outliers.

5.2 Too-close contacts [i](#)

In the following table, the Non-H and H(model) columns list the number of non-hydrogen atoms and hydrogen atoms in the chain respectively. The H(added) column lists the number of hydrogen atoms added and optimized by MolProbity. The Clashes column lists the number of clashes within the asymmetric unit, whereas Symm-Clashes lists symmetry related clashes.

Mol	Chain	Non-H	H(model)	H(added)	Clashes	Symm-Clashes
1	A	2535	0	2571	148	0
2	A	42	0	0	2	0
3	A	16	0	24	0	0
4	A	5	0	0	5	0
5	A	50	0	0	2	0
All	All	2648	0	2595	149	0

The all-atom clashscore is defined as the number of clashes found per 1000 atoms (including hydrogen atoms). The all-atom clashscore for this structure is 29.

All (149) close contacts within the same asymmetric unit are listed below, sorted by their clash magnitude.

Atom-1	Atom-2	Interatomic distance (Å)	Clash overlap (Å)
1:A:1001:LEU:C	1:A:1001:LEU:HD12	1.61	1.22
1:A:754:LYS:HD3	1:A:754:LYS:C	1.42	1.21
1:A:999:ARG:CD	1:A:999:ARG:H	1.52	1.20
1:A:998:TYR:O	1:A:1001:LEU:HG	1.42	1.18
1:A:751:THR:HG22	1:A:756:ASN:HB2	1.24	1.17
1:A:1001:LEU:O	1:A:1001:LEU:HD12	1.43	1.14
1:A:1005:GLU:HA	1:A:1005:GLU:OE1	1.41	1.13
1:A:748:ARG:CG	1:A:748:ARG:HH11	1.61	1.12
1:A:831:ARG:HG2	1:A:831:ARG:HH11	0.96	1.09
1:A:999:ARG:H	1:A:999:ARG:HD3	0.95	1.09
1:A:865:GLU:HG3	1:A:865:GLU:O	1.48	1.07
1:A:748:ARG:HG3	1:A:748:ARG:NH1	1.52	1.03
1:A:754:LYS:O	1:A:754:LYS:HD3	1.56	1.02
1:A:999:ARG:HH21	1:A:999:ARG:HG2	1.15	1.01
1:A:999:ARG:N	1:A:999:ARG:HD3	1.75	0.99
1:A:831:ARG:HG2	1:A:831:ARG:NH1	1.64	0.98
1:A:999:ARG:NH2	1:A:999:ARG:HG2	1.74	0.96
1:A:754:LYS:C	1:A:754:LYS:CD	2.32	0.95
1:A:1007:MET:O	1:A:1010:VAL:HG22	1.66	0.95
1:A:734:GLU:HA	4:A:1108:CL:CL	2.03	0.95
1:A:751:THR:HG22	1:A:756:ASN:CB	1.97	0.94
1:A:1001:LEU:HD11	1:A:1002:MET:HE2	1.48	0.94
1:A:999:ARG:HH21	1:A:999:ARG:CG	1.80	0.94
1:A:842:ASN:O	1:A:854:THR:HG22	1.70	0.91
1:A:1001:LEU:C	1:A:1001:LEU:CD1	2.39	0.91
1:A:748:ARG:HG3	1:A:748:ARG:HH11	0.75	0.90
1:A:831:ARG:HH11	1:A:831:ARG:CG	1.81	0.89
1:A:999:ARG:N	1:A:999:ARG:CD	2.30	0.88
1:A:751:THR:HB	1:A:753:PRO:N	1.92	0.84
1:A:976:GLN:HE22	1:A:984:ASP:CG	1.81	0.84
1:A:733:PRO:HB2	1:A:736:GLU:HB2	1.60	0.83
1:A:940:THR:HG22	1:A:942:ASP:H	1.43	0.83
1:A:1007:MET:CE	1:A:1010:VAL:HG13	2.11	0.81
1:A:865:GLU:CG	1:A:865:GLU:O	2.30	0.80
1:A:723:PHE:CZ	1:A:749:GLU:OE2	2.35	0.79
1:A:751:THR:CG2	1:A:756:ASN:HB2	2.12	0.78
1:A:998:TYR:O	1:A:1001:LEU:CG	2.30	0.76
1:A:735:GLY:N	4:A:1108:CL:CL	2.54	0.76
1:A:1001:LEU:HD13	1:A:1002:MET:HG3	1.68	0.75
1:A:754:LYS:O	1:A:754:LYS:CD	2.30	0.75
1:A:1001:LEU:O	1:A:1001:LEU:CD1	2.30	0.75
1:A:1001:LEU:CD1	1:A:1002:MET:HE2	2.17	0.75

Continued on next page...

Continued from previous page...

Atom-1	Atom-2	Interatomic distance (Å)	Clash overlap (Å)
1:A:754:LYS:HD3	1:A:755:ALA:N	2.02	0.75
1:A:1005:GLU:CA	1:A:1005:GLU:OE1	2.30	0.74
1:A:999:ARG:HD2	1:A:1007:MET:HG3	1.70	0.73
1:A:733:PRO:HB2	1:A:736:GLU:CB	2.18	0.73
1:A:1007:MET:HE2	1:A:1010:VAL:HG13	1.72	0.71
1:A:860:LYS:HE3	1:A:866:GLU:HG3	1.72	0.71
1:A:1001:LEU:HD11	1:A:1002:MET:CE	2.21	0.70
1:A:751:THR:CG2	1:A:756:ASN:CB	2.70	0.70
1:A:878:ILE:HG21	1:A:920:ALA:HB1	1.74	0.69
1:A:905:TRP:O	1:A:909:THR:HG23	1.92	0.68
1:A:999:ARG:HA	1:A:1000:ALA:C	2.13	0.67
1:A:793:MET:HE1	1:A:852:LYS:HD2	1.79	0.65
1:A:812:GLN:O	1:A:816:ASN:ND2	2.32	0.63
1:A:940:THR:HG22	1:A:942:ASP:N	2.11	0.63
1:A:1001:LEU:CD1	1:A:1002:MET:HG3	2.29	0.63
1:A:831:ARG:NH1	1:A:831:ARG:CG	2.46	0.62
1:A:867:LYS:HZ3	1:A:867:LYS:HB2	1.65	0.61
1:A:766:MET:HB3	1:A:777:LEU:HB2	1.84	0.59
1:A:723:PHE:CE2	1:A:749:GLU:OE2	2.56	0.59
1:A:751:THR:HB	1:A:753:PRO:CA	2.32	0.58
1:A:781:CYS:HB3	1:A:787:GLN:HE21	1.69	0.58
1:A:1001:LEU:CD1	1:A:1002:MET:CG	2.82	0.58
1:A:867:LYS:NZ	1:A:867:LYS:HB2	2.19	0.58
1:A:754:LYS:O	1:A:754:LYS:CE	2.51	0.57
1:A:747:LEU:O	1:A:785:THR:HG21	2.04	0.57
1:A:853:ILE:CG2	1:A:854:THR:N	2.67	0.57
1:A:1004:GLU:HG3	1:A:1005:GLU:H	1.70	0.56
1:A:1003:ASP:O	1:A:1004:GLU:C	2.43	0.55
1:A:722:ALA:O	1:A:723:PHE:HB2	2.06	0.55
1:A:776[A]:ARG:HG3	4:A:1106:CL:CL	2.44	0.55
1:A:999:ARG:HB3	1:A:1003:ASP:HA	1.88	0.54
1:A:961:PHE:O	1:A:965:ILE:HG13	2.09	0.53
1:A:992:PRO:HG2	1:A:997:PHE:CD1	2.44	0.53
1:A:1007:MET:HE2	1:A:1010:VAL:CG1	2.38	0.52
1:A:853:ILE:HG22	1:A:854:THR:N	2.25	0.52
1:A:1001:LEU:HD13	1:A:1002:MET:CG	2.40	0.51
1:A:866:GLU:O	1:A:867:LYS:C	2.48	0.51
1:A:875:LYS:HG2	1:A:876:VAL:N	2.25	0.51
1:A:992:PRO:O	1:A:997:PHE:CD2	2.63	0.51
1:A:892:THR:H	1:A:895:SER:HB3	1.76	0.51
1:A:754:LYS:O	1:A:754:LYS:HE3	2.12	0.50

Continued on next page...

Continued from previous page...

Atom-1	Atom-2	Interatomic distance (Å)	Clash overlap (Å)
1:A:746:GLU:HB2	1:A:787:GLN:HG2	1.93	0.50
1:A:734:GLU:CA	4:A:1108:CL:CL	2.89	0.50
1:A:992:PRO:HB2	1:A:997:PHE:HB2	1.94	0.50
1:A:1004:GLU:CG	1:A:1005:GLU:H	2.23	0.50
1:A:859:ALA:O	1:A:860:LYS:HD3	2.11	0.50
1:A:866:GLU:OE2	1:A:866:GLU:O	2.30	0.50
1:A:995:SER:O	1:A:999:ARG:NE	2.43	0.50
1:A:718:LEU:HD21	1:A:728:LYS:HB2	1.94	0.50
1:A:1002:MET:O	1:A:1003:ASP:C	2.50	0.49
1:A:711:GLU:OE1	1:A:734:GLU:HB2	2.13	0.49
1:A:998:TYR:O	1:A:1001:LEU:O	2.30	0.49
1:A:812:GLN:HG3	1:A:816:ASN:HD21	1.77	0.48
1:A:725:THR:OG1	1:A:748:ARG:HD3	2.13	0.48
1:A:723:PHE:O	1:A:747:LEU:CD2	2.61	0.48
1:A:846:LYS:HG2	1:A:847:THR:HG23	1.95	0.48
1:A:999:ARG:HH21	1:A:999:ARG:CB	2.26	0.48
1:A:996:ASN:O	1:A:999:ARG:O	2.30	0.48
1:A:1002:MET:O	1:A:1004:GLU:N	2.47	0.48
1:A:776[B]:ARG:HG2	4:A:1106:CL:CL	2.50	0.48
1:A:997:PHE:O	1:A:997:PHE:CD1	2.67	0.48
1:A:838:LEU:HD12	1:A:838:LEU:HA	1.66	0.47
2:A:1101:81C:CAN	2:A:1101:81C:N3	2.74	0.47
1:A:748:ARG:CG	1:A:748:ARG:NH1	2.34	0.47
1:A:878:ILE:HG22	1:A:879:LYS:N	2.30	0.47
1:A:942:ASP:OD1	1:A:942:ASP:N	2.47	0.47
1:A:825:MET:CE	1:A:838:LEU:HD22	2.45	0.47
1:A:723:PHE:CE1	1:A:752:SER:OG	2.68	0.46
1:A:812:GLN:HG3	1:A:816:ASN:ND2	2.30	0.46
1:A:864:ALA:O	1:A:865:GLU:CG	2.64	0.45
1:A:884:GLU:HG2	1:A:885:SER:N	2.31	0.45
1:A:949:LYS:O	1:A:952:MET:HG2	2.17	0.45
1:A:776[A]:ARG:HD3	1:A:776[A]:ARG:HA	1.56	0.45
1:A:751:THR:CA	1:A:752:SER:C	2.86	0.44
1:A:753:PRO:CD	1:A:754:LYS:H	2.31	0.43
1:A:774:VAL:HG13	1:A:856:PHE:HZ	1.82	0.43
1:A:1001:LEU:HD12	1:A:1002:MET:N	2.27	0.43
1:A:756:ASN:O	1:A:759:ILE:HG22	2.19	0.43
1:A:1001:LEU:CD1	1:A:1002:MET:SD	3.07	0.43
1:A:751:THR:HA	1:A:752:SER:CB	2.48	0.43
1:A:892:THR:HG22	1:A:893:HIS:N	2.34	0.42
1:A:751:THR:CG2	1:A:753:PRO:HA	2.50	0.42

Continued on next page...

Continued from previous page...

Atom-1	Atom-2	Interatomic distance (Å)	Clash overlap (Å)
1:A:1012:ASP:OD2	1:A:1013:ALA:N	2.52	0.42
1:A:730:LEU:HD12	1:A:730:LEU:HA	1.83	0.42
1:A:935:GLN:HA	1:A:944:TYR:CE2	2.54	0.42
1:A:999:ARG:NH2	1:A:999:ARG:CG	2.47	0.42
1:A:1004:GLU:HG3	1:A:1005:GLU:N	2.35	0.42
1:A:751:THR:HA	1:A:752:SER:C	2.40	0.42
1:A:1002:MET:O	1:A:1004:GLU:HB2	2.20	0.42
1:A:713:LYS:HB3	1:A:713:LYS:HZ2	1.84	0.42
1:A:796:GLY:HA2	2:A:1101:81C:CAQ	2.50	0.42
1:A:892:THR:H	1:A:895:SER:CB	2.33	0.42
1:A:805:HIS:NE2	5:A:1202:HOH:O	2.37	0.41
1:A:1017:LEU:HD12	5:A:1239:HOH:O	2.20	0.41
1:A:711:GLU:HB3	1:A:731:TRP:CD1	2.55	0.41
1:A:860:LYS:HA	1:A:860:LYS:HD3	1.64	0.41
1:A:1000:ALA:O	1:A:1003:ASP:N	2.54	0.41
1:A:749:GLU:HB3	1:A:750:ALA:O	2.20	0.41
1:A:808:ASN:C	1:A:987:MET:HG2	2.41	0.41
1:A:881:MET:HE2	1:A:886:ILE:HG12	2.02	0.41
1:A:771:ASN:HB3	1:A:774:VAL:HG23	2.03	0.41
1:A:792:LEU:O	1:A:794:PRO:HD3	2.20	0.41
1:A:1001:LEU:HD12	1:A:1002:MET:CB	2.51	0.40
1:A:781:CYS:SG	1:A:783:THR:HG23	2.61	0.40
1:A:984:ASP:HB3	1:A:985:GLU:OE1	2.21	0.40
1:A:1002:MET:HE2	1:A:1002:MET:HB2	1.92	0.40
1:A:1007:MET:HE1	1:A:1010:VAL:HG13	1.99	0.40

There are no symmetry-related clashes.

5.3 Torsion angles [i](#)

5.3.1 Protein backbone [i](#)

In the following table, the Percentiles column shows the percent Ramachandran outliers of the chain as a percentile score with respect to all X-ray entries followed by that with respect to entries of similar resolution.

The Analysed column shows the number of residues for which the backbone conformation was analysed, and the total number of residues.

Mol	Chain	Analysed	Favoured	Allowed	Outliers	Percentiles
1	A	314/331 (95%)	300 (96%)	13 (4%)	1 (0%)	43 80

All (1) Ramachandran outliers are listed below:

Mol	Chain	Res	Type
1	A	1019	PRO

5.3.2 Protein sidechains [i](#)

In the following table, the Percentiles column shows the percent sidechain outliers of the chain as a percentile score with respect to all X-ray entries followed by that with respect to entries of similar resolution.

The Analysed column shows the number of residues for which the sidechain conformation was analysed, and the total number of residues.

Mol	Chain	Analysed	Rotameric	Outliers	Percentiles
1	A	277/288 (96%)	232 (84%)	45 (16%)	2 13

All (45) residues with a non-rotameric sidechain are listed below:

Mol	Chain	Res	Type
1	A	703	LEU
1	A	713	LYS
1	A	725	THR
1	A	734	GLU
1	A	737	LYS
1	A	744	ILE
1	A	746	GLU
1	A	748	ARG
1	A	749	GLU
1	A	752	SER
1	A	754	LYS
1	A	776[A]	ARG
1	A	776[B]	ARG
1	A	790	MET
1	A	831	ARG
1	A	833	LEU
1	A	862	LEU
1	A	865	GLU
1	A	866	GLU
1	A	867	LYS
1	A	875	LYS
1	A	876	VAL
1	A	878	ILE
1	A	884	GLU

Continued on next page...

Continued from previous page...

Mol	Chain	Res	Type
1	A	909	THR
1	A	921	SER
1	A	923	ILE
1	A	924	SER
1	A	939	CYS
1	A	942	ASP
1	A	945	MET
1	A	956	ASP
1	A	957	SER
1	A	962	ARG
1	A	985	GLU
1	A	987	MET
1	A	989	LEU
1	A	991	SER
1	A	994	ASP
1	A	999	ARG
1	A	1001	LEU
1	A	1005	GLU
1	A	1006	ASP
1	A	1010	VAL
1	A	1017	LEU

Some sidechains can be flipped to improve hydrogen bonding and reduce clashes. All (2) such sidechains are listed below:

Mol	Chain	Res	Type
1	A	816	ASN
1	A	976	GLN

5.3.3 RNA [i](#)

There are no RNA molecules in this entry.

5.4 Non-standard residues in protein, DNA, RNA chains [i](#)

There are no non-standard protein/DNA/RNA residues in this entry.

5.5 Carbohydrates [i](#)

There are no carbohydrates in this entry.

5.6 Ligand geometry

Of 10 ligands modelled in this entry, 5 are monoatomic - leaving 5 for Mogul analysis.

In the following table, the Counts columns list the number of bonds (or angles) for which Mogul statistics could be retrieved, the number of bonds (or angles) that are observed in the model and the number of bonds (or angles) that are defined in the Chemical Component Dictionary. The Link column lists molecule types, if any, to which the group is linked. The Z score for a bond length (or angle) is the number of standard deviations the observed value is removed from the expected value. A bond length (or angle) with $|Z| > 2$ is considered an outlier worth inspection. RMSZ is the root-mean-square of all Z scores of the bond lengths (or angles).

Mol	Type	Chain	Res	Link	Bond lengths			Bond angles		
					Counts	RMSZ	# Z > 2	Counts	RMSZ	# Z > 2
2	81C	A	1101	1	45,45,45	2.87	11 (24%)	60,64,64	3.09	19 (31%)
3	EDO	A	1102	-	3,3,3	0.92	0	2,2,2	0.24	0
3	EDO	A	1103	-	3,3,3	0.85	0	2,2,2	0.24	0
3	EDO	A	1104	-	3,3,3	0.46	0	2,2,2	0.21	0
3	EDO	A	1105	-	3,3,3	1.00	0	2,2,2	0.45	0

In the following table, the Chirals column lists the number of chiral outliers, the number of chiral centers analysed, the number of these observed in the model and the number defined in the Chemical Component Dictionary. Similar counts are reported in the Torsion and Rings columns. '-' means no outliers of that kind were identified.

Mol	Type	Chain	Res	Link	Chirals	Torsions	Rings
2	81C	A	1101	1	-	1/34/44/44	0/4/4/4
3	EDO	A	1102	-	-	0/1/1/1	0/0/0/0
3	EDO	A	1103	-	-	0/1/1/1	0/0/0/0
3	EDO	A	1104	-	-	0/1/1/1	0/0/0/0
3	EDO	A	1105	-	-	0/1/1/1	0/0/0/0

All (11) bond length outliers are listed below:

Mol	Chain	Res	Type	Atoms	Z	Observed(Å)	Ideal(Å)
2	A	1101	81C	CBM-NBC	-3.23	1.35	1.41
2	A	1101	81C	CBP-NBU	-2.76	1.35	1.41
2	A	1101	81C	CBK-NBE	-2.07	1.34	1.39
2	A	1101	81C	CAY-NBU	2.29	1.50	1.46
2	A	1101	81C	CAX-NBU	2.31	1.50	1.46
2	A	1101	81C	CAU-CBH	2.81	1.53	1.48
2	A	1101	81C	C6-N1	3.06	1.40	1.34
2	A	1101	81C	CAT-CAU	4.55	1.52	1.30
2	A	1101	81C	CBR-SBV	7.08	1.94	1.79
2	A	1101	81C	OAI-SBV	10.31	1.53	1.44

Continued on next page...

Continued from previous page...

Mol	Chain	Res	Type	Atoms	Z	Observed(Å)	Ideal(Å)
2	A	1101	81C	OAH-SBV	11.06	1.54	1.44

All (19) bond angle outliers are listed below:

Mol	Chain	Res	Type	Atoms	Z	Observed(°)	Ideal(°)
2	A	1101	81C	CAT-CAU-CBH	-12.66	110.23	122.42
2	A	1101	81C	OAH-SBV-OAI	-7.30	111.79	118.72
2	A	1101	81C	N1-C2-N3	-7.28	119.74	126.66
2	A	1101	81C	OAI-SBV-CBR	-6.94	103.13	107.94
2	A	1101	81C	CBQ-CBK-NBE	-5.45	116.70	121.63
2	A	1101	81C	C5-C6-N1	-4.49	118.63	122.77
2	A	1101	81C	CAB-OBF-CBN	-4.47	110.90	117.53
2	A	1101	81C	CAR-CBP-NBU	-4.08	116.97	122.65
2	A	1101	81C	CBK-NBE-C4	-3.43	121.36	129.53
2	A	1101	81C	OAG-CBH-CAU	-2.36	118.88	122.83
2	A	1101	81C	C6-C5-C4	-2.27	118.91	120.16
2	A	1101	81C	CBL-NBD-C2	-2.13	122.62	129.58
2	A	1101	81C	CAQ-CBL-NBD	2.77	126.41	120.98
2	A	1101	81C	C6-N1-C2	2.80	120.44	115.83
2	A	1101	81C	C2-N3-C4	2.93	122.72	117.03
2	A	1101	81C	OAG-CBH-NBC	3.39	126.91	122.95
2	A	1101	81C	NBE-C4-N3	3.75	124.64	119.22
2	A	1101	81C	CAY-NBU-CAX	4.17	120.51	111.54
2	A	1101	81C	CBQ-SBV-CBR	5.73	117.14	105.47

There are no chirality outliers.

All (1) torsion outliers are listed below:

Mol	Chain	Res	Type	Atoms
2	A	1101	81C	CAT-CAU-CBH-NBC

There are no ring outliers.

1 monomer is involved in 2 short contacts:

Mol	Chain	Res	Type	Clashes	Symm-Clashes
2	A	1101	81C	2	0

5.7 Other polymers

There are no such residues in this entry.

5.8 Polymer linkage issues

There are no chain breaks in this entry.

6 Fit of model and data [i](#)

6.1 Protein, DNA and RNA chains [i](#)

In the following table, the column labelled ‘#RSRZ > 2’ contains the number (and percentage) of RSRZ outliers, followed by percent RSRZ outliers for the chain as percentile scores relative to all X-ray entries and entries of similar resolution. The OWAB column contains the minimum, median, 95th percentile and maximum values of the occupancy-weighted average B-factor per residue. The column labelled ‘Q < 0.9’ lists the number of (and percentage) of residues with an average occupancy less than 0.9.

Mol	Chain	Analysed	<RSRZ>	#RSRZ>2	OWAB(Å ²)	Q<0.9
1	A	317/331 (95%)	-0.01	15 (4%) 31 12	31, 54, 115, 139	9 (2%)

All (15) RSRZ outliers are listed below:

Mol	Chain	Res	Type	RSRZ
1	A	1000	ALA	5.9
1	A	1002	MET	4.7
1	A	998	TYR	3.5
1	A	999	ARG	3.3
1	A	1020	GLN	3.2
1	A	996	ASN	2.9
1	A	723	PHE	2.6
1	A	1003	ASP	2.5
1	A	722	ALA	2.5
1	A	917	GLY	2.4
1	A	749	GLU	2.3
1	A	1005	GLU	2.3
1	A	867	LYS	2.2
1	A	1004	GLU	2.2
1	A	991	SER	2.0

6.2 Non-standard residues in protein, DNA, RNA chains [i](#)

There are no non-standard protein/DNA/RNA residues in this entry.

6.3 Carbohydrates [i](#)

There are no carbohydrates in this entry.

6.4 Ligands [i](#)

In the following table, the Atoms column lists the number of modelled atoms in the group and the number defined in the chemical component dictionary. The B-factors column lists the minimum, median, 95th percentile and maximum values of B factors of atoms in the group. The column labelled 'Q< 0.9' lists the number of atoms with occupancy less than 0.9.

Mol	Type	Chain	Res	Atoms	RSCC	RSR	B-factors(\AA^2)	Q<0.9
3	EDO	A	1104	4/4	0.76	0.34	48,53,54,57	0
4	CL	A	1110	1/1	0.81	0.19	81,81,81,81	0
3	EDO	A	1105	4/4	0.85	0.31	52,59,59,65	0
4	CL	A	1107	1/1	0.86	0.16	84,84,84,84	0
3	EDO	A	1103	4/4	0.88	0.23	60,64,68,75	0
4	CL	A	1106	1/1	0.89	0.23	79,79,79,79	0
4	CL	A	1108	1/1	0.89	0.22	91,91,91,91	0
3	EDO	A	1102	4/4	0.90	0.35	42,44,47,50	0
2	81C	A	1101	42/42	0.95	0.18	43,54,72,84	0
4	CL	A	1109	1/1	0.95	0.07	77,77,77,77	0

6.5 Other polymers [i](#)

There are no such residues in this entry.