



Full wwPDB EM Validation Report ⓘ

Nov 10, 2024 – 10:20 pm GMT

PDB ID : 9GUR
EMDB ID : EMD-51617
Title : 30S mRNA delivery complex TEC resolved (TEC only)
Authors : Rahil, H.; Weixlbaumer, A.; Webster, M.W.
Deposited on : 2024-09-20
Resolution : 4.20 Å (reported)

This is a Full wwPDB EM Validation Report for a publicly released PDB entry.

We welcome your comments at validation@mail.wwpdb.org

A user guide is available at

<https://www.wwpdb.org/validation/2017/EMValidationReportHelp>

with specific help available everywhere you see the ⓘ symbol.

The types of validation reports are described at

<http://www.wwpdb.org/validation/2017/FAQs#types>.

The following versions of software and data (see [references ⓘ](#)) were used in the production of this report:

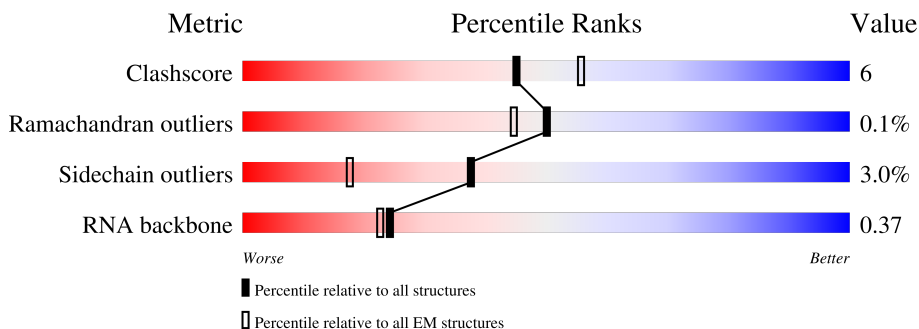
EMDB validation analysis : 0.0.1.dev113
MolProbity : 4.02b-467
Percentile statistics : 20231227.v01 (using entries in the PDB archive December 27th 2023)
MapQ : 1.9.13
Ideal geometry (proteins) : Engh & Huber (2001)
Ideal geometry (DNA, RNA) : Parkinson et al. (1996)
Validation Pipeline (wwPDB-VP) : 2.39

1 Overall quality at a glance

The following experimental techniques were used to determine the structure:
ELECTRON MICROSCOPY

The reported resolution of this entry is 4.20 Å.

Percentile scores (ranging between 0-100) for global validation metrics of the entry are shown in the following graphic. The table shows the number of entries on which the scores are based.





Metric	Whole archive (#Entries)	EM structures (#Entries)
Clashscore	210492	15764
Ramachandran outliers	207382	16835
Sidechain outliers	206894	16415
RNA backbone	6643	2191

The table below summarises the geometric issues observed across the polymeric chains and their fit to the map. The red, orange, yellow and green segments of the bar indicate the fraction of residues that contain outliers for ≥ 3 , 2, 1 and 0 types of geometric quality criteria respectively. A grey segment represents the fraction of residues that are not modelled. The numeric value for each fraction is indicated below the corresponding segment, with a dot representing fractions $\leq 5\%$. The upper red bar (where present) indicates the fraction of residues that have poor fit to the EM map (all-atom inclusion $< 40\%$). The numeric value is given above the bar.

Mol	Chain	Length	Quality of chain
1	1	229	 82% 17%
2	5	71	 72% 25%
3	6	30	 60% 33% 7%
4	7	30	 7% 57% 30% 10%
5	X	16	 19% 44% 38% 19%
6	2	230	 78% 17% 5%
7	3	1342	 83% 15%

Continued on next page...

Continued from previous page...

Mol	Chain	Length	Quality of chain
8	4	1359	 83% 15% ..
9	Z	113	 65% 19% .. 12%

2 Entry composition

There are 11 unique types of molecules in this entry. The entry contains 27128 atoms, of which 0 are hydrogens and 0 are deuteriums.

In the tables below, the AltConf column contains the number of residues with at least one atom in alternate conformation and the Trace column contains the number of residues modelled with at most 2 atoms.

- Molecule 1 is a protein called DNA-directed RNA polymerase subunit alpha.

Mol	Chain	Residues	Atoms					AltConf	Trace
			Total	C	N	O	S		
1	1	229	1776	1106	313	351	6	0	0

- Molecule 2 is a protein called DNA-directed RNA polymerase subunit omega.

Mol	Chain	Residues	Atoms					AltConf	Trace
			Total	C	N	O	S		
2	5	71	567	346	106	114	1	0	0

- Molecule 3 is a DNA chain called Non-Template DNA strand.

Mol	Chain	Residues	Atoms					AltConf	Trace
			Total	C	N	O	P		
3	6	28	567	269	100	170	28	0	0

- Molecule 4 is a DNA chain called Template DNA strand.

Mol	Chain	Residues	Atoms					AltConf	Trace
			Total	C	N	O	P		
4	7	29	596	284	109	174	29	0	0

- Molecule 5 is a RNA chain called mRNA.

Mol	Chain	Residues	Atoms					AltConf	Trace
			Total	C	N	O	P		
5	X	16	345	154	68	107	16	0	0

- Molecule 6 is a protein called DNA-directed RNA polymerase subunit alpha.

Mol	Chain	Residues	Atoms					AltConf	Trace
			Total	C	N	O	S		
6	2	219	1685	1051	295	333	6	0	0

- Molecule 7 is a protein called DNA-directed RNA polymerase subunit beta.

Mol	Chain	Residues	Atoms					AltConf	Trace
			Total	C	N	O	S		
7	3	1320	10415	6535	1815	2021	44	0	0

- Molecule 8 is a protein called DNA-directed RNA polymerase subunit beta'.

Mol	Chain	Residues	Atoms					AltConf	Trace
			Total	C	N	O	S		
8	4	1333	10376	6518	1851	1957	50	0	0

- Molecule 9 is a protein called Transcription termination/antitermination protein NusG.

Mol	Chain	Residues	Atoms					AltConf	Trace
			Total	C	N	O	S		
9	Z	99	798	510	140	142	6	0	0

- Molecule 10 is MAGNESIUM ION (three-letter code: MG) (formula: Mg).

Mol	Chain	Residues	Atoms		AltConf
			Total	Mg	
10	4	1	1	1	0

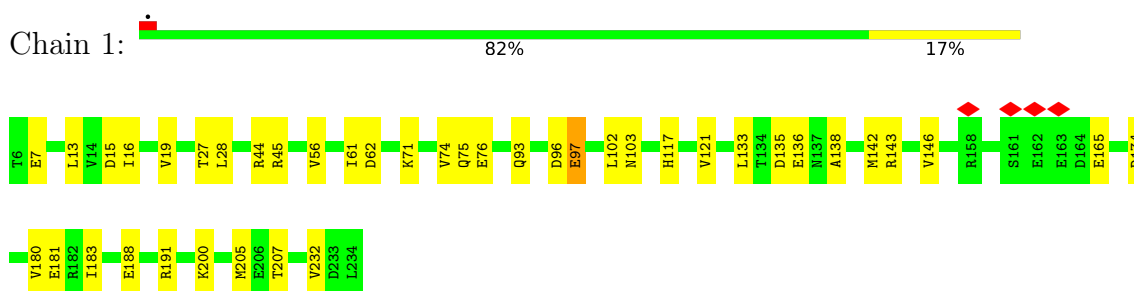
- Molecule 11 is ZINC ION (three-letter code: ZN) (formula: Zn).

Mol	Chain	Residues	Atoms		AltConf
			Total	Zn	
11	4	2	2	2	0

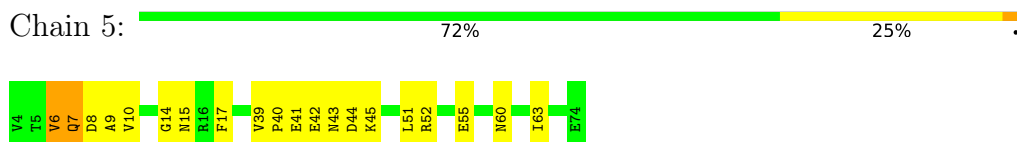
3 Residue-property plots [i](#)

These plots are drawn for all protein, RNA, DNA and oligosaccharide chains in the entry. The first graphic for a chain summarises the proportions of the various outlier classes displayed in the second graphic. The second graphic shows the sequence view annotated by issues in geometry and atom inclusion in map density. Residues are color-coded according to the number of geometric quality criteria for which they contain at least one outlier: green = 0, yellow = 1, orange = 2 and red = 3 or more. A red diamond above a residue indicates a poor fit to the EM map for this residue (all-atom inclusion < 40%). Stretches of 2 or more consecutive residues without any outlier are shown as a green connector. Residues present in the sample, but not in the model, are shown in grey.

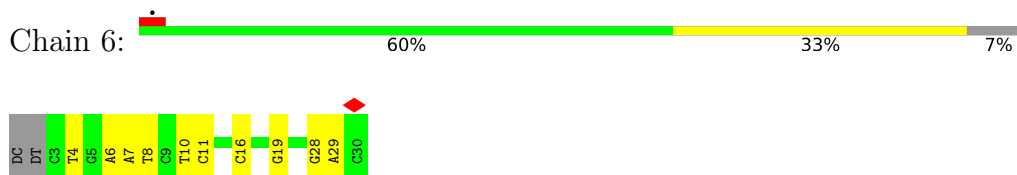
- Molecule 1: DNA-directed RNA polymerase subunit alpha



- Molecule 2: DNA-directed RNA polymerase subunit omega



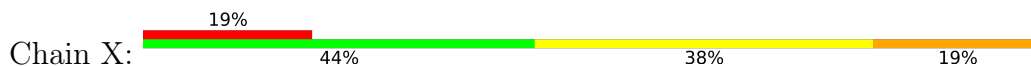
- Molecule 3: Non-Template DNA strand

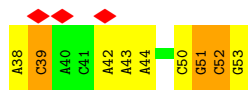


- Molecule 4: Template DNA strand

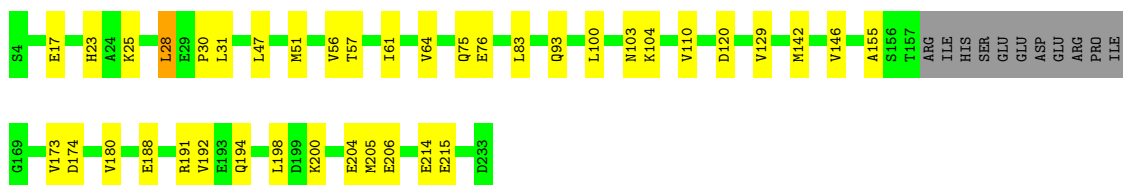
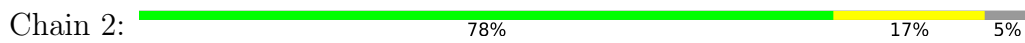


- Molecule 5: mRNA

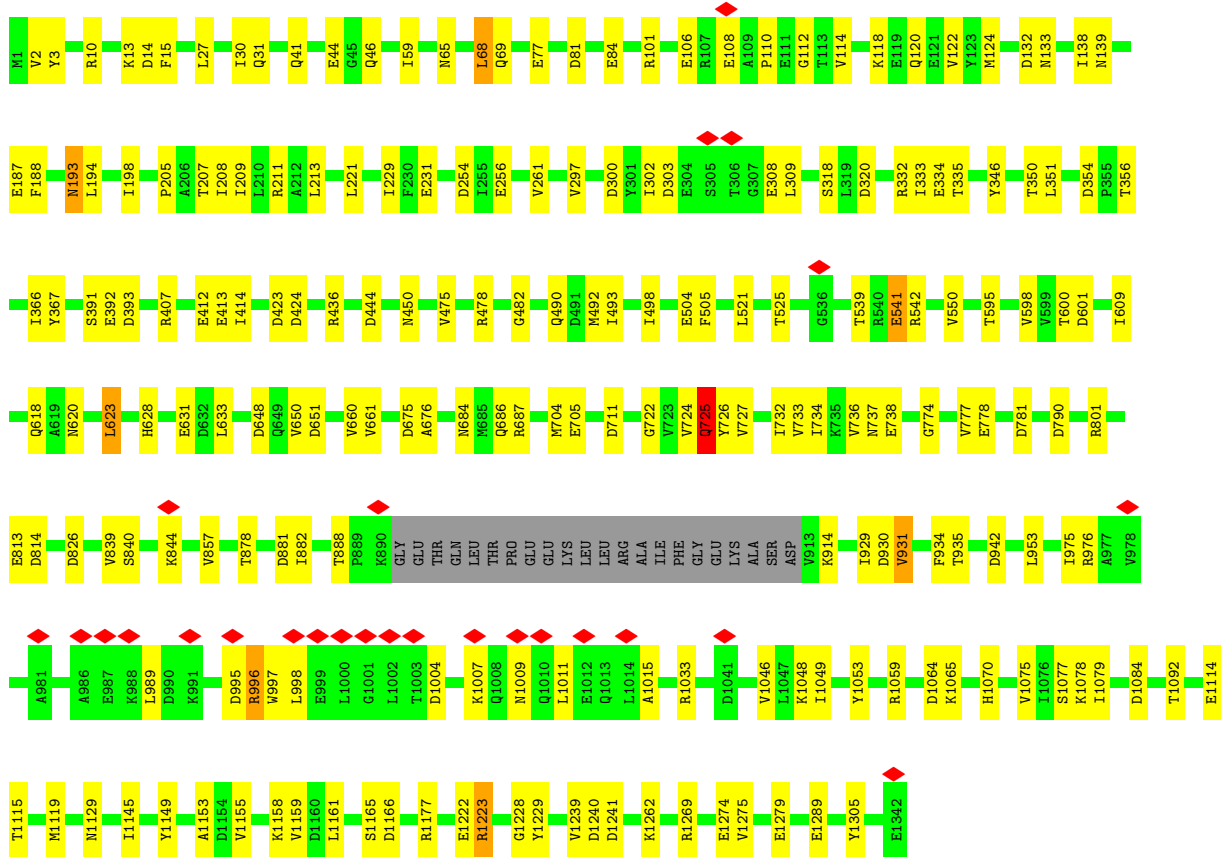
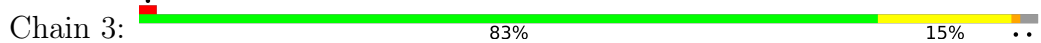




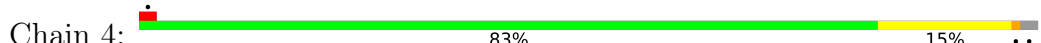
• Molecule 6: DNA-directed RNA polymerase subunit alpha

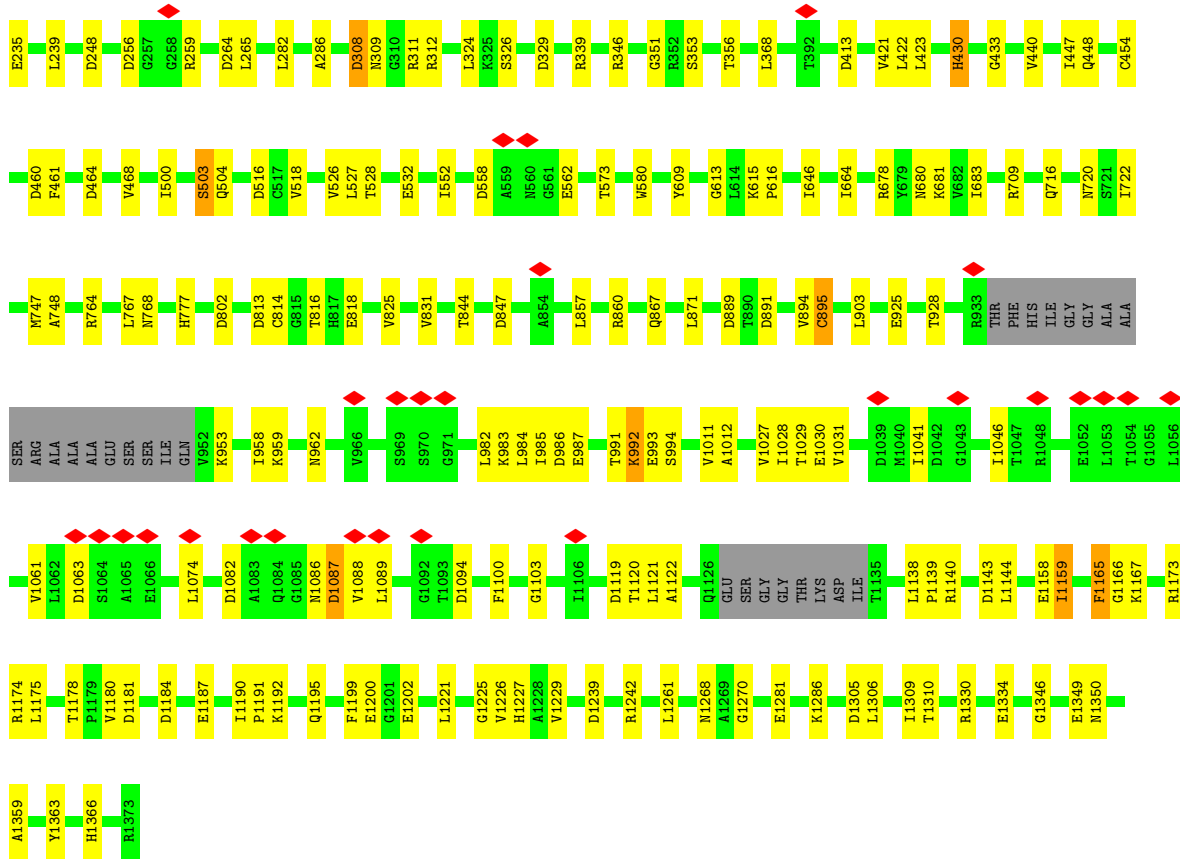


• Molecule 7: DNA-directed RNA polymerase subunit beta

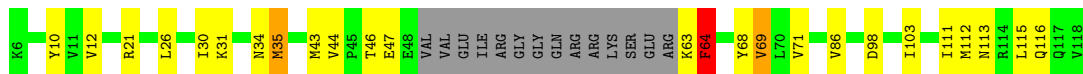
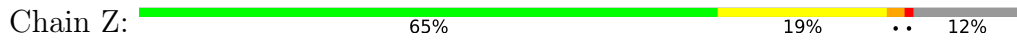


• Molecule 8: DNA-directed RNA polymerase subunit beta'





- Molecule 9: Transcription termination/antitermination protein NusG



4 Experimental information

Property	Value	Source
EM reconstruction method	SINGLE PARTICLE	Depositor
Imposed symmetry	POINT, Not provided	
Number of particles used	7285	Depositor
Resolution determination method	FSC 0.143 CUT-OFF	Depositor
CTF correction method	PHASE FLIPPING AND AMPLITUDE CORRECTION	Depositor
Microscope	TFS KRIOS	Depositor
Voltage (kV)	300	Depositor
Electron dose ($e^-/\text{\AA}^2$)	49.95	Depositor
Minimum defocus (nm)	800	Depositor
Maximum defocus (nm)	2000	Depositor
Magnification	Not provided	
Image detector	GATAN K2 QUANTUM (4k x 4k)	Depositor
Maximum map value	0.794	Depositor
Minimum map value	-0.262	Depositor
Average map value	0.001	Depositor
Map value standard deviation	0.027	Depositor
Recommended contour level	0.197	Depositor
Map size (\AA)	503.99997, 503.99997, 503.99997	wwPDB
Map dimensions	600, 600, 600	wwPDB
Map angles ($^\circ$)	90.0, 90.0, 90.0	wwPDB
Pixel spacing (\AA)	0.84, 0.84, 0.84	Depositor

5 Model quality [i](#)

5.1 Standard geometry [i](#)

Bond lengths and bond angles in the following residue types are not validated in this section: ZN, MG

The Z score for a bond length (or angle) is the number of standard deviations the observed value is removed from the expected value. A bond length (or angle) with $|Z| > 5$ is considered an outlier worth inspection. RMSZ is the root-mean-square of all Z scores of the bond lengths (or angles).

Mol	Chain	Bond lengths		Bond angles	
		RMSZ	# Z >5	RMSZ	# Z >5
1	1	0.25	0/1798	0.54	0/2436
2	5	0.24	0/569	0.53	0/765
3	6	0.52	0/633	0.85	3/973 (0.3%)
4	7	0.54	1/668 (0.1%)	1.05	5/1029 (0.5%)
5	X	0.32	0/386	0.88	0/600
6	2	0.25	0/1704	0.52	0/2308
7	3	0.26	0/10581	0.51	0/14275
8	4	0.25	0/10533	0.52	0/14219
9	Z	0.31	0/816	0.60	0/1098
All	All	0.28	1/27688 (0.0%)	0.56	8/37703 (0.0%)

Chiral center outliers are detected by calculating the chiral volume of a chiral center and verifying if the center is modelled as a planar moiety or with the opposite hand. A planarity outlier is detected by checking planarity of atoms in a peptide group, atoms in a mainchain group or atoms of a sidechain that are expected to be planar.

Mol	Chain	#Chirality outliers	#Planarity outliers
7	3	0	1
8	4	0	2
All	All	0	3

All (1) bond length outliers are listed below:

Mol	Chain	Res	Type	Atoms	Z	Observed(Å)	Ideal(Å)
4	7	24	DC	O3'-P	5.74	1.68	1.61

All (8) bond angle outliers are listed below:

Mol	Chain	Res	Type	Atoms	Z	Observed(°)	Ideal(°)
4	7	37	DG	N9-C1'-C2'	8.17	128.12	112.60

Continued on next page...

Continued from previous page...

Mol	Chain	Res	Type	Atoms	Z	Observed(°)	Ideal(°)
3	6	6	DA	N9-C1'-C2'	7.14	126.17	112.60
4	7	34	DT	N1-C1'-C2'	6.76	125.45	112.60
3	6	7	DA	N9-C1'-C2'	6.61	125.16	112.60
4	7	28	DA	N9-C1'-C2'	6.22	124.42	112.60
4	7	31	DG	P-O3'-C3'	5.59	126.41	119.70
4	7	34	DT	O4'-C1'-C2'	5.55	110.34	105.90
3	6	7	DA	O4'-C1'-C2'	5.31	110.14	105.90

There are no chirality outliers.

All (3) planarity outliers are listed below:

Mol	Chain	Res	Type	Group
7	3	725	GLN	Peptide
8	4	1165	PHE	Peptide
8	4	1166	GLY	Peptide

5.2 Too-close contacts [i](#)

In the following table, the Non-H and H(model) columns list the number of non-hydrogen atoms and hydrogen atoms in the chain respectively. The H(added) column lists the number of hydrogen atoms added and optimized by MolProbity. The Clashes column lists the number of clashes within the asymmetric unit, whereas Symm-Clashes lists symmetry-related clashes.

Mol	Chain	Non-H	H(model)	H(added)	Clashes	Symm-Clashes
1	1	1776	0	1800	27	0
2	5	567	0	575	12	0
3	6	567	0	315	6	0
4	7	596	0	328	9	0
5	X	345	0	177	4	0
6	2	1685	0	1713	22	0
7	3	10415	0	10432	124	0
8	4	10376	0	10594	118	0
9	Z	798	0	792	17	0
10	4	1	0	0	0	0
11	4	2	0	0	0	0
All	All	27128	0	26726	329	0

The all-atom clashscore is defined as the number of clashes found per 1000 atoms (including hydrogen atoms). The all-atom clashscore for this structure is 6.

All (329) close contacts within the same asymmetric unit are listed below, sorted by their clash magnitude.

Atom-1	Atom-2	Interatomic distance (Å)	Clash overlap (Å)
7:3:595:THR:OG1	7:3:600:THR:OG1	1.97	0.81
8:4:326:SER:N	8:4:329:ASP:OD2	2.16	0.79
5:X:38:A:O2'	5:X:39:C:O2	2.03	0.77
8:4:175:GLU:N	8:4:175:GLU:OE1	2.18	0.76
8:4:847:ASP:OD1	8:4:860:ARG:N	2.19	0.75
7:3:1158:LYS:NZ	7:3:1159:VAL:O	2.22	0.72
8:4:558:ASP:OD1	8:4:562:GLU:N	2.23	0.72
9:Z:112:MET:SD	9:Z:113:ASN:N	2.65	0.69
7:3:857:VAL:HG21	7:3:882:ILE:HD11	1.75	0.69
6:2:56:VAL:HG22	6:2:146:VAL:HG22	1.74	0.69
8:4:1349:GLU:N	8:4:1349:GLU:OE1	2.27	0.68
7:3:231:GLU:OE2	7:3:332:ARG:NE	2.26	0.68
7:3:412:GLU:N	7:3:412:GLU:OE1	2.27	0.67
7:3:490:GLN:N	7:3:490:GLN:OE1	2.27	0.67
7:3:138:ILE:HG22	7:3:139:ASN:H	1.60	0.67
7:3:778:GLU:N	7:3:781:ASP:OD2	2.25	0.67
8:4:987:GLU:N	8:4:987:GLU:OE1	2.28	0.66
7:3:930:ASP:OD1	7:3:931:VAL:N	2.29	0.66
7:3:334:GLU:OE1	7:3:334:GLU:N	2.28	0.66
8:4:111:THR:O	8:4:239:LEU:N	2.29	0.66
8:4:818:GLU:N	8:4:818:GLU:OE1	2.30	0.65
1:1:205:MET:SD	1:1:205:MET:N	2.70	0.64
1:1:117:HIS:NE2	1:1:121:VAL:O	2.30	0.64
8:4:528:THR:N	8:4:532:GLU:OE2	2.28	0.63
8:4:831:VAL:HG13	8:4:992:LYS:HB2	1.80	0.63
7:3:14:ASP:OD1	7:3:15:PHE:N	2.32	0.63
1:1:76:GLU:OE1	1:1:76:GLU:N	2.31	0.62
8:4:1239:ASP:OD1	8:4:1242:ARG:NH2	2.31	0.62
1:1:181:GLU:N	1:1:181:GLU:OE1	2.34	0.61
8:4:500:ILE:O	8:4:500:ILE:HG22	2.01	0.60
1:1:15:ASP:OD1	1:1:16:ILE:N	2.34	0.60
7:3:77:GLU:OE1	7:3:77:GLU:N	2.33	0.60
7:3:138:ILE:HG22	7:3:139:ASN:N	2.17	0.59
8:4:85:CYS:O	8:4:89:GLY:N	2.35	0.59
6:2:142:MET:SD	6:2:142:MET:N	2.76	0.58
7:3:413:GLU:OE1	7:3:414:ILE:N	2.36	0.58
7:3:478:ARG:O	7:3:482:GLY:N	2.35	0.58
8:4:125:GLY:O	8:4:129:ASP:N	2.37	0.58
2:5:15:ASN:OD1	2:5:17:PHE:N	2.36	0.58
7:3:660:VAL:HG13	7:3:661:VAL:HG13	1.86	0.58
8:4:92:VAL:O	8:4:92:VAL:HG13	2.04	0.57
7:3:1004:ASP:O	7:3:1009:ASN:ND2	2.36	0.57

Continued on next page...

Continued from previous page...

Atom-1	Atom-2	Interatomic distance (Å)	Clash overlap (Å)
8:4:1030:GLU:OE1	8:4:1031:VAL:HG13	2.04	0.57
7:3:724:VAL:O	7:3:774:GLY:N	2.33	0.57
7:3:207:THR:HG21	7:3:351:LEU:HD12	1.86	0.57
7:3:318:SER:OG	7:3:320:ASP:OD1	2.10	0.57
2:5:42:GLU:OE1	2:5:52:ARG:NH1	2.34	0.56
9:Z:31:LYS:O	9:Z:34:ASN:ND2	2.39	0.56
8:4:1063:ASP:OD1	8:4:1103:GLY:N	2.33	0.56
1:1:45:ARG:NH2	7:3:1084:ASP:OD1	2.38	0.56
1:1:93:GLN:OE1	1:1:93:GLN:N	2.39	0.56
4:7:31:DG:H2''	4:7:32:DA:O5'	2.06	0.55
7:3:839:VAL:HG12	7:3:1049:ILE:HD12	1.87	0.55
7:3:998:LEU:HD21	7:3:1015:ALA:CB	2.37	0.55
7:3:705:GLU:N	7:3:705:GLU:OE1	2.34	0.55
8:4:1086:ASN:ND2	8:4:1087:ASP:OD1	2.38	0.55
8:4:235:GLU:OE1	8:4:235:GLU:N	2.36	0.55
8:4:1027:VAL:HG12	8:4:1122:ALA:HB2	1.89	0.55
8:4:1028:ILE:HG22	8:4:1120:THR:HG22	1.89	0.55
7:3:205:PRO:O	7:3:208:ILE:HG22	2.08	0.55
8:4:1029:THR:N	8:4:1119:ASP:O	2.35	0.54
8:4:1346:GLY:O	8:4:1350:ASN:ND2	2.37	0.54
7:3:254:ASP:OD1	7:3:261:VAL:HG23	2.07	0.54
6:2:214:GLU:OE1	6:2:215:GLU:N	2.40	0.54
7:3:998:LEU:HD21	7:3:1015:ALA:HB2	1.90	0.54
7:3:1274:GLU:N	7:3:1274:GLU:OE1	2.39	0.54
8:4:1195:GLN:N	8:4:1195:GLN:OE1	2.41	0.53
9:Z:112:MET:O	9:Z:116:GLN:N	2.41	0.53
1:1:61:ILE:HG22	1:1:62:ASP:N	2.23	0.53
6:2:191:ARG:NH1	8:4:413:ASP:OD2	2.38	0.53
9:Z:26:LEU:HD22	9:Z:86:VAL:HG21	1.90	0.53
7:3:10:ARG:NH2	7:3:790:ASP:OD2	2.41	0.53
7:3:59:ILE:HD13	7:3:475:VAL:HG11	1.89	0.53
7:3:539:THR:OG1	7:3:542:ARG:NH2	2.41	0.53
7:3:391:SER:OG	7:3:393:ASP:OD1	2.16	0.53
6:2:173:VAL:HG22	6:2:174:ASP:H	1.74	0.53
8:4:1226:VAL:HG13	8:4:1227:HIS:N	2.24	0.52
7:3:132:ASP:OD1	7:3:133:ASN:N	2.41	0.52
7:3:631:GLU:OE1	7:3:631:GLU:N	2.38	0.52
4:7:36:DA:H2''	4:7:37:DG:H5''	1.91	0.52
7:3:10:ARG:NH1	7:3:790:ASP:OD2	2.40	0.52
4:7:32:DA:H4'	4:7:32:DA:OP1	2.10	0.52
7:3:953:LEU:C	7:3:953:LEU:HD23	2.30	0.52

Continued on next page...

Continued from previous page...

Atom-1	Atom-2	Interatomic distance (Å)	Clash overlap (Å)
8:4:1202:GLU:OE1	8:4:1202:GLU:N	2.42	0.52
9:Z:10:TYR:N	9:Z:71:VAL:O	2.42	0.52
8:4:1173:ARG:N	8:4:1190:ILE:O	2.41	0.52
7:3:1129:ASN:OD1	7:3:1177:ARG:NH2	2.41	0.51
8:4:503:SER:OG	8:4:504:GLN:N	2.40	0.51
7:3:541:GLU:OE1	7:3:541:GLU:N	2.37	0.51
8:4:1027:VAL:HG12	8:4:1122:ALA:CB	2.40	0.51
8:4:1173:ARG:O	8:4:1190:ILE:N	2.39	0.51
4:7:22:DT:H1'	4:7:23:DT:H71	1.91	0.51
7:3:13:LYS:NZ	7:3:1149:TYR:O	2.34	0.51
1:1:188:GLU:O	1:1:200:LYS:N	2.37	0.51
4:7:34:DT:H2''	4:7:35:DC:C2	2.45	0.51
7:3:46:GLN:OE1	7:3:46:GLN:N	2.41	0.51
7:3:478:ARG:NH2	7:3:492:MET:O	2.42	0.51
7:3:675:ASP:OD1	7:3:676:ALA:N	2.44	0.51
7:3:81:ASP:OD1	7:3:84:GLU:N	2.35	0.51
8:4:351:GLY:O	8:4:468:VAL:HG12	2.11	0.51
2:5:41:GLU:OE1	2:5:43:ASN:N	2.39	0.51
6:2:110:VAL:O	6:2:129:VAL:HG23	2.10	0.51
3:6:10:DT:H2''	3:6:11:DC:C5	2.46	0.50
7:3:550:VAL:HG13	8:4:777:HIS:ND1	2.26	0.50
7:3:1269:ARG:HA	8:4:346:ARG:HA	1.93	0.50
8:4:99:ARG:NH1	8:4:248:ASP:OD2	2.44	0.50
1:1:135:ASP:OD1	1:1:136:GLU:N	2.45	0.50
8:4:133:ARG:NE	8:4:134:ASP:OD1	2.41	0.50
8:4:747:MET:SD	8:4:748:ALA:N	2.81	0.50
8:4:925:GLU:O	8:4:928:THR:HG22	2.12	0.50
3:6:8:DT:H5''	3:6:8:DT:H6	1.76	0.50
6:2:75:GLN:NE2	6:2:76:GLU:OE1	2.39	0.50
8:4:1173:ARG:NH1	8:4:1192:LYS:O	2.45	0.50
7:3:1275:VAL:HG12	7:3:1279:GLU:OE2	2.11	0.50
7:3:110:PRO:O	7:3:112:GLY:N	2.42	0.49
7:3:297:VAL:HG23	7:3:333:ILE:HD11	1.93	0.49
7:3:303:ASP:N	7:3:308:GLU:O	2.33	0.49
1:1:61:ILE:HG22	1:1:62:ASP:H	1.78	0.49
7:3:193:ASN:OD1	7:3:193:ASN:N	2.39	0.49
7:3:737:ASN:OD1	7:3:738:GLU:N	2.45	0.49
7:3:976:ARG:CZ	7:3:989:LEU:HD23	2.43	0.49
7:3:724:VAL:HG22	7:3:734:ILE:CD1	2.42	0.49
6:2:28:LEU:N	6:2:28:LEU:HD22	2.28	0.48
8:4:1268:ASN:OD1	8:4:1270:GLY:N	2.31	0.48

Continued on next page...

Continued from previous page...

Atom-1	Atom-2	Interatomic distance (Å)	Clash overlap (Å)
8:4:1221:LEU:HD12	8:4:1225:GLY:HA3	1.94	0.48
6:2:93:GLN:NE2	6:2:120:ASP:OD1	2.38	0.48
7:3:423:ASP:OD1	7:3:424:ASP:N	2.45	0.48
8:4:1359:ALA:O	8:4:1363:TYR:N	2.32	0.48
6:2:57:THR:HA	6:2:173:VAL:HG12	1.95	0.48
8:4:15:GLU:OE1	8:4:15:GLU:N	2.46	0.48
2:5:39:VAL:HG13	2:5:40:PRO:HD2	1.96	0.48
3:6:19:DG:OP1	7:3:1262:LYS:N	2.47	0.48
7:3:478:ARG:NE	7:3:492:MET:O	2.47	0.48
7:3:724:VAL:HG22	7:3:734:ILE:HD12	1.96	0.48
7:3:1064:ASP:OD1	7:3:1065:LYS:N	2.46	0.48
8:4:526:VAL:C	8:4:527:LEU:HD12	2.34	0.48
1:1:102:LEU:HD23	1:1:103:ASN:N	2.28	0.48
1:1:7:GLU:N	1:1:7:GLU:OE1	2.46	0.48
9:Z:30:ILE:O	9:Z:34:ASN:N	2.43	0.48
8:4:1144:LEU:C	8:4:1144:LEU:HD23	2.34	0.47
1:1:45:ARG:NH1	7:3:1084:ASP:OD1	2.45	0.47
7:3:623:LEU:N	7:3:623:LEU:HD23	2.28	0.47
7:3:444:ASP:O	7:3:450:ASN:ND2	2.47	0.47
8:4:309:ASN:ND2	8:4:324:LEU:O	2.42	0.47
7:3:198:ILE:HD12	7:3:198:ILE:N	2.29	0.47
7:3:211:ARG:NE	7:3:354:ASP:OD2	2.45	0.47
7:3:1153:ALA:O	7:3:1155:VAL:N	2.46	0.47
8:4:422:LEU:C	8:4:423:LEU:HD22	2.34	0.47
7:3:44:GLU:OE1	7:3:46:GLN:NE2	2.43	0.47
9:Z:44:VAL:HG22	9:Z:69:VAL:HA	1.97	0.47
1:1:96:ASP:OD1	1:1:97:GLU:N	2.48	0.47
3:6:16:DC:OP1	8:4:339:ARG:NH2	2.44	0.47
2:5:10:VAL:O	2:5:14:GLY:N	2.44	0.47
8:4:308:ASP:OD2	8:4:311:ARG:NE	2.34	0.47
7:3:207:THR:HG21	7:3:351:LEU:CD1	2.44	0.47
6:2:173:VAL:HG22	6:2:174:ASP:N	2.29	0.47
8:4:1281:GLU:OE1	8:4:1281:GLU:N	2.41	0.47
7:3:521:LEU:O	7:3:525:THR:HG22	2.15	0.46
8:4:69:GLU:OE1	8:4:69:GLU:N	2.48	0.46
8:4:1089:LEU:HB2	8:4:1094:ASP:HA	1.96	0.46
2:5:8:ASP:OD1	2:5:9:ALA:N	2.48	0.46
8:4:516:ASP:CB	8:4:573:THR:HG21	2.45	0.46
2:5:6:VAL:HG23	2:5:7:GLN:H	1.80	0.46
8:4:460:ASP:OD1	8:4:464:ASP:OD2	2.33	0.46
9:Z:64:PHE:CD1	9:Z:64:PHE:N	2.83	0.46

Continued on next page...

Continued from previous page...

Atom-1	Atom-2	Interatomic distance (Å)	Clash overlap (Å)
6:2:23:HIS:HB3	6:2:206:GLU:HA	1.98	0.46
2:5:41:GLU:OE2	2:5:44:ASP:N	2.49	0.46
8:4:256:ASP:OD2	8:4:259:ARG:NE	2.40	0.46
8:4:825:VAL:O	8:4:825:VAL:HG13	2.16	0.46
2:5:60:ASN:HD21	2:5:63:ILE:HD13	1.81	0.45
7:3:392:GLU:OE1	7:3:392:GLU:N	2.45	0.45
8:4:552:ILE:HD11	8:4:580:TRP:CD1	2.51	0.45
9:Z:63:LYS:O	9:Z:64:PHE:C	2.55	0.45
4:7:22:DT:H1'	4:7:23:DT:C7	2.46	0.45
7:3:935:THR:HA	7:3:1048:LYS:HA	1.99	0.45
8:4:1138:LEU:HB3	8:4:1139:PRO:HD3	1.97	0.45
5:X:50:C:H2'	5:X:51:G:O4'	2.17	0.45
7:3:69:GLN:N	7:3:101:ARG:O	2.43	0.45
7:3:650:VAL:HG22	7:3:651:ASP:N	2.32	0.45
7:3:813:GLU:HG3	7:3:814:ASP:H	1.80	0.45
5:X:38:A:O2'	5:X:38:A:N3	2.46	0.45
8:4:1167:LYS:HB3	8:4:1174:ARG:HB2	1.99	0.45
4:7:32:DA:H2''	4:7:33:DT:O4'	2.15	0.45
7:3:618:GLN:OE1	7:3:620:ASN:ND2	2.50	0.45
7:3:801:ARG:NH1	7:3:1229:TYR:OH	2.46	0.45
8:4:265:LEU:H	8:4:265:LEU:HD22	1.81	0.45
1:1:135:ASP:HB3	1:1:138:ALA:HB2	1.99	0.45
1:1:180:VAL:HG12	1:1:207:THR:HG22	1.99	0.45
7:3:138:ILE:CG2	7:3:139:ASN:H	2.27	0.45
7:3:407:ARG:NH2	7:3:609:ILE:HD12	2.31	0.45
8:4:518:VAL:HG23	8:4:716:GLN:OE1	2.17	0.45
7:3:30:ILE:HG23	7:3:31:GLN:N	2.32	0.45
7:3:1070:HIS:NE2	7:3:1114:GLU:OE1	2.43	0.45
8:4:1180:VAL:HG12	8:4:1180:VAL:O	2.17	0.45
7:3:929:ILE:O	7:3:930:ASP:HB2	2.17	0.44
8:4:1175:LEU:HD13	8:4:1190:ILE:CD1	2.47	0.44
5:X:51:G:H2'	5:X:52:C:H5'	1.99	0.44
6:2:61:ILE:HG23	6:2:64:VAL:HB	1.98	0.44
8:4:813:ASP:OD1	8:4:814:CYS:N	2.50	0.44
1:1:44:ARG:HG3	1:1:183:ILE:HG21	1.99	0.44
1:1:174:ASP:OD2	7:3:1059:ARG:NH1	2.48	0.44
6:2:47:LEU:O	6:2:51:MET:HG2	2.16	0.44
7:3:1007:LYS:HE3	7:3:1011:LEU:HD11	1.99	0.44
8:4:59:ALA:O	8:4:63:GLY:N	2.50	0.44
7:3:187:GLU:O	7:3:194:LEU:HD12	2.17	0.44
8:4:992:LYS:O	8:4:992:LYS:HG2	2.17	0.44

Continued on next page...

Continued from previous page...

Atom-1	Atom-2	Interatomic distance (Å)	Clash overlap (Å)
9:Z:10:TYR:O	9:Z:71:VAL:N	2.49	0.44
9:Z:35:MET:SD	9:Z:35:MET:N	2.87	0.44
8:4:1082:ASP:OD2	8:4:1088:VAL:HG23	2.17	0.44
1:1:75:GLN:OE1	7:3:727:VAL:HG11	2.18	0.44
8:4:217:LEU:C	8:4:217:LEU:HD23	2.38	0.44
1:1:71:LYS:HB3	1:1:74:VAL:HG21	1.99	0.44
7:3:1119:MET:HB2	7:3:1228:GLY:HA2	2.00	0.44
8:4:264:ASP:N	8:4:264:ASP:OD1	2.51	0.44
8:4:857:LEU:HD21	8:4:871:LEU:HD21	2.00	0.44
8:4:891:ASP:OD1	8:4:1286:LYS:NZ	2.51	0.44
7:3:995:ASP:OD1	7:3:996:ARG:N	2.50	0.43
7:3:1075:VAL:HG22	8:4:461:PHE:O	2.17	0.43
7:3:1222:GLU:O	7:3:1223:ARG:HG2	2.18	0.43
8:4:127:LEU:O	8:4:220:ARG:NH2	2.38	0.43
8:4:903:LEU:H	8:4:903:LEU:HD22	1.83	0.43
8:4:1011:VAL:HG22	8:4:1012:ALA:N	2.33	0.43
7:3:598:VAL:HG13	7:3:628:HIS:CE1	2.53	0.43
7:3:1239:VAL:HG13	7:3:1240:ASP:N	2.32	0.43
8:4:147:ILE:HG13	8:4:177:ASP:HB3	1.99	0.43
8:4:1221:LEU:HA	8:4:1225:GLY:CA	2.48	0.43
4:7:33:DT:H2''	4:7:34:DT:H5''	2.00	0.43
8:4:664:ILE:HG22	8:4:678:ARG:HG2	2.00	0.43
8:4:1046:ILE:HG22	8:4:1061:VAL:HG22	2.00	0.43
1:1:180:VAL:HG12	1:1:207:THR:HB	2.00	0.43
1:1:27:THR:C	1:1:28:LEU:HD12	2.39	0.43
7:3:68:LEU:HA	7:3:101:ARG:O	2.18	0.43
8:4:126:LEU:HD23	8:4:223:LEU:HD22	2.00	0.43
7:3:888:THR:O	7:3:914:LYS:N	2.52	0.43
6:2:188:GLU:O	6:2:200:LYS:N	2.33	0.43
7:3:229:ILE:HD12	7:3:334:GLU:HG3	2.00	0.43
8:4:816:THR:OG1	8:4:818:GLU:OE1	2.30	0.43
8:4:1221:LEU:HA	8:4:1225:GLY:HA3	2.00	0.43
2:5:6:VAL:CG1	2:5:51:LEU:HD21	2.49	0.43
7:3:813:GLU:CG	7:3:814:ASP:H	2.31	0.43
8:4:1181:ASP:OD1	8:4:1181:ASP:N	2.51	0.43
3:6:4:DT:H6	3:6:4:DT:H2'	1.75	0.42
9:Z:98:ASP:N	9:Z:98:ASP:OD1	2.52	0.42
9:Z:111:ILE:O	9:Z:115:LEU:N	2.49	0.42
8:4:1140:ARG:O	8:4:1143:ASP:OD1	2.37	0.42
7:3:302:ILE:HA	7:3:309:LEU:HA	2.02	0.42
7:3:498:ILE:HD12	7:3:498:ILE:H	1.84	0.42

Continued on next page...

Continued from previous page...

Atom-1	Atom-2	Interatomic distance (Å)	Clash overlap (Å)
7:3:878:THR:N	7:3:881:ASP:OD2	2.38	0.42
8:4:768:ASN:OD1	8:4:768:ASN:C	2.57	0.42
7:3:2:VAL:HG22	7:3:3:TYR:N	2.34	0.42
7:3:975:ILE:HG21	7:3:997:TRP:CE3	2.54	0.42
8:4:421:VAL:HG22	8:4:422:LEU:N	2.34	0.42
1:1:133:LEU:N	1:1:133:LEU:HD12	2.35	0.42
1:1:180:VAL:HG12	1:1:207:THR:CG2	2.49	0.42
8:4:368:LEU:HD23	8:4:440:VAL:O	2.20	0.42
8:4:615:LYS:HB3	8:4:616:PRO:HD3	2.02	0.42
8:4:894:VAL:HG12	8:4:895:CYS:N	2.34	0.42
8:4:1028:ILE:HG22	8:4:1120:THR:CG2	2.48	0.42
7:3:539:THR:HB	7:3:541:GLU:OE1	2.20	0.42
7:3:724:VAL:HG13	7:3:732:ILE:HD11	2.02	0.42
9:Z:103:ILE:HD12	9:Z:103:ILE:H	1.84	0.42
7:3:106:GLU:HA	7:3:114:VAL:CG2	2.50	0.42
7:3:1145:ILE:HG22	7:3:1161:LEU:HD11	2.01	0.42
8:4:160:LEU:N	8:4:160:LEU:HD23	2.34	0.42
8:4:282:LEU:O	8:4:286:ALA:N	2.53	0.42
8:4:959:LYS:N	8:4:983:LYS:O	2.53	0.42
8:4:1305:ASP:OD1	8:4:1306:LEU:N	2.52	0.42
7:3:1077:SER:O	7:3:1078:LYS:HB2	2.20	0.42
8:4:982:LEU:O	8:4:994:SER:HA	2.20	0.41
9:Z:12:VAL:O	9:Z:69:VAL:N	2.50	0.41
7:3:122:VAL:HG21	7:3:493:ILE:HD11	2.02	0.41
8:4:646:ILE:HD11	8:4:764:ARG:HD2	2.01	0.41
8:4:1143:ASP:OD1	8:4:1144:LEU:N	2.53	0.41
1:1:56:VAL:HG22	1:1:146:VAL:HG22	2.02	0.41
2:5:6:VAL:HG13	2:5:51:LEU:HD21	2.01	0.41
6:2:100:LEU:HD12	6:2:100:LEU:N	2.35	0.41
7:3:27:LEU:HD23	7:3:711:ASP:OD2	2.21	0.41
7:3:366:ILE:HG23	7:3:367:TYR:N	2.35	0.41
7:3:725:GLN:O	7:3:726:TYR:HB2	2.19	0.41
7:3:633:LEU:HD12	7:3:633:LEU:O	2.20	0.41
8:4:26:SER:OG	8:4:28:ASP:OD1	2.29	0.41
8:4:958:ILE:HD13	8:4:984:LEU:HG	2.02	0.41
8:4:985:ILE:N	8:4:985:ILE:HD12	2.35	0.41
7:3:209:ILE:O	7:3:213:LEU:N	2.45	0.41
7:3:930:ASP:HB3	7:3:1053:TYR:H	1.86	0.41
7:3:934:PHE:O	7:3:1048:LYS:HA	2.21	0.41
8:4:356:THR:HG23	8:4:448:GLN:HA	2.01	0.41
8:4:680:ASN:OD1	8:4:681:LYS:N	2.53	0.41

Continued on next page...

Continued from previous page...

Atom-1	Atom-2	Interatomic distance (Å)	Clash overlap (Å)
6:2:204:GLU:OE1	6:2:205:MET:N	2.53	0.41
7:3:101:ARG:HA	7:3:118:LYS:HA	2.03	0.41
7:3:1079:ILE:O	7:3:1079:ILE:HG23	2.21	0.41
8:4:992:LYS:O	8:4:993:GLU:CG	2.68	0.41
8:4:1159:ILE:HD12	8:4:1159:ILE:N	2.35	0.41
8:4:1225:GLY:O	8:4:1229:VAL:HG12	2.21	0.41
9:Z:103:ILE:HD12	9:Z:103:ILE:N	2.36	0.41
4:7:18:DG:N3	4:7:18:DG:C2'	2.84	0.41
7:3:346:TYR:OH	7:3:436:ARG:NH1	2.54	0.41
7:3:722:GLY:O	7:3:777:VAL:HG22	2.19	0.41
8:4:353:SER:HB3	8:4:447:ILE:HD12	2.01	0.41
6:2:104:LYS:HG2	6:2:110:VAL:HG22	2.01	0.41
6:2:155:ALA:N	6:2:174:ASP:OD1	2.54	0.41
6:2:192:VAL:HG13	6:2:198:LEU:HD12	2.03	0.41
7:3:840:SER:O	7:3:1046:VAL:HA	2.21	0.41
8:4:1100:PHE:CD1	8:4:1200:GLU:HB3	2.56	0.41
8:4:1309:ILE:HG13	8:4:1310:THR:N	2.36	0.41
9:Z:46:THR:HG22	9:Z:47:GLU:N	2.36	0.41
3:6:28:DG:H2''	3:6:29:DA:O5'	2.21	0.41
7:3:138:ILE:CG2	7:3:139:ASN:N	2.83	0.41
7:3:207:THR:HG23	7:3:350:THR:CG2	2.51	0.41
8:4:609:TYR:O	8:4:613:GLY:N	2.45	0.41
8:4:985:ILE:HA	8:4:991:THR:HA	2.03	0.41
6:2:180:VAL:HG13	6:2:206:GLU:O	2.21	0.40
7:3:354:ASP:OD1	7:3:356:THR:N	2.54	0.40
8:4:720:ASN:OD1	8:4:722:ILE:N	2.54	0.40
8:4:1041:ILE:HG12	8:4:1074:LEU:HD13	2.03	0.40
8:4:1173:ARG:NH1	8:4:1191:PRO:O	2.54	0.40
2:5:51:LEU:C	2:5:51:LEU:HD23	2.41	0.40
7:3:208:ILE:HG23	7:3:209:ILE:N	2.35	0.40
7:3:726:TYR:CB	7:3:733:VAL:HG12	2.51	0.40
1:1:180:VAL:CG1	1:1:207:THR:HG22	2.52	0.40
6:2:30:PRO:C	6:2:31:LEU:HD22	2.42	0.40
7:3:600:THR:HG22	7:3:601:ASP:N	2.36	0.40
8:4:680:ASN:O	8:4:683:ILE:HG12	2.21	0.40
8:4:1178:THR:HG23	8:4:1184:ASP:HB3	2.03	0.40
7:3:684:ASN:O	7:3:687:ARG:HG2	2.22	0.40
7:3:1165:SER:O	7:3:1166:ASP:HB2	2.22	0.40
8:4:430:HIS:O	8:4:433:GLY:N	2.47	0.40
8:4:1158:GLU:O	8:4:1159:ILE:HB	2.21	0.40
8:4:1165:PHE:CE1	8:4:1199:PHE:O	2.75	0.40

There are no symmetry-related clashes.

5.3 Torsion angles [i](#)

5.3.1 Protein backbone [i](#)

In the following table, the Percentiles column shows the percent Ramachandran outliers of the chain as a percentile score with respect to all PDB entries followed by that with respect to all EM entries.

The Analysed column shows the number of residues for which the backbone conformation was analysed, and the total number of residues.

Mol	Chain	Analysed	Favoured	Allowed	Outliers	Percentiles	
1	1	227/229 (99%)	216 (95%)	11 (5%)	0	100	100
2	5	69/71 (97%)	61 (88%)	7 (10%)	1 (1%)	9	40
6	2	215/230 (94%)	200 (93%)	15 (7%)	0	100	100
7	3	1316/1342 (98%)	1231 (94%)	84 (6%)	1 (0%)	48	82
8	4	1327/1359 (98%)	1254 (94%)	72 (5%)	1 (0%)	48	82
9	Z	95/113 (84%)	91 (96%)	3 (3%)	1 (1%)	12	46
All	All	3249/3344 (97%)	3053 (94%)	192 (6%)	4 (0%)	50	82

All (4) Ramachandran outliers are listed below:

Mol	Chain	Res	Type
8	4	1159	ILE
9	Z	64	PHE
7	3	1223	ARG
2	5	7	GLN

5.3.2 Protein sidechains [i](#)

In the following table, the Percentiles column shows the percent sidechain outliers of the chain as a percentile score with respect to all PDB entries followed by that with respect to all EM entries.

The Analysed column shows the number of residues for which the sidechain conformation was analysed, and the total number of residues.

Mol	Chain	Analysed	Rotameric	Outliers	Percentiles	
1	1	197/197 (100%)	189 (96%)	8 (4%)	26	49

Continued on next page...

Continued from previous page...

Mol	Chain	Analysed	Rotameric	Outliers	Percentiles	
2	5	62/62 (100%)	59 (95%)	3 (5%)	21	45
6	2	187/198 (94%)	181 (97%)	6 (3%)	34	55
7	3	1139/1157 (98%)	1107 (97%)	32 (3%)	38	59
8	4	1118/1135 (98%)	1088 (97%)	30 (3%)	40	60
9	Z	87/99 (88%)	81 (93%)	6 (7%)	13	35
All	All	2790/2848 (98%)	2705 (97%)	85 (3%)	37	57

All (85) residues with a non-rotameric sidechain are listed below:

Mol	Chain	Res	Type
1	1	13	LEU
1	1	19	VAL
1	1	97	GLU
1	1	142	MET
1	1	143	ARG
1	1	165	GLU
1	1	191	ARG
1	1	232	VAL
2	5	6	VAL
2	5	45	LYS
2	5	55	GLU
6	2	17	GLU
6	2	25	LYS
6	2	28	LEU
6	2	83	LEU
6	2	103	ASN
6	2	194	GLN
7	3	41	GLN
7	3	65	ASN
7	3	68	LEU
7	3	108	GLU
7	3	120	GLN
7	3	124	MET
7	3	188	PHE
7	3	193	ASN
7	3	221	LEU
7	3	256	GLU
7	3	300	ASP
7	3	335	THR
7	3	504	GLU

Continued on next page...

Continued from previous page...

Mol	Chain	Res	Type
7	3	505	PHE
7	3	541	GLU
7	3	623	LEU
7	3	648	ASP
7	3	686	GLN
7	3	704	MET
7	3	725	GLN
7	3	736	VAL
7	3	826	ASP
7	3	844	LYS
7	3	931	VAL
7	3	942	ASP
7	3	996	ARG
7	3	1033	ARG
7	3	1092	THR
7	3	1115	THR
7	3	1241	ASP
7	3	1289	GLU
7	3	1305	TYR
8	4	54	ASP
8	4	72	CYS
8	4	96	LYS
8	4	99	ARG
8	4	130	MET
8	4	165	TYR
8	4	209	ASN
8	4	308	ASP
8	4	312	ARG
8	4	430	HIS
8	4	454	CYS
8	4	503	SER
8	4	709	ARG
8	4	767	LEU
8	4	802	ASP
8	4	844	THR
8	4	867	GLN
8	4	889	ASP
8	4	895	CYS
8	4	953	LYS
8	4	962	ASN
8	4	986	ASP
8	4	992	LYS

Continued on next page...

Continued from previous page...

Mol	Chain	Res	Type
8	4	1087	ASP
8	4	1121	LEU
8	4	1187	GLU
8	4	1261	LEU
8	4	1330	ARG
8	4	1334	GLU
8	4	1366	HIS
9	Z	21	ARG
9	Z	35	MET
9	Z	43	MET
9	Z	64	PHE
9	Z	68	TYR
9	Z	69	VAL

Sometimes sidechains can be flipped to improve hydrogen bonding and reduce clashes. All (5) such sidechains are listed below:

Mol	Chain	Res	Type
2	5	61	ASN
7	3	65	ASN
7	3	235	ASN
7	3	1313	HIS
8	4	488	ASN

5.3.3 RNA [i](#)

Mol	Chain	Analysed	Backbone Outliers	Pucker Outliers
5	X	15/16 (93%)	7 (46%)	0

All (7) RNA backbone outliers are listed below:

Mol	Chain	Res	Type
5	X	39	C
5	X	42	A
5	X	43	A
5	X	44	A
5	X	51	G
5	X	52	C
5	X	53	G

There are no RNA pucker outliers to report.

5.4 Non-standard residues in protein, DNA, RNA chains [i](#)

There are no non-standard protein/DNA/RNA residues in this entry.

5.5 Carbohydrates [i](#)

There are no oligosaccharides in this entry.

5.6 Ligand geometry [i](#)

Of 3 ligands modelled in this entry, 3 are monoatomic - leaving 0 for Mogul analysis.

There are no bond length outliers.

There are no bond angle outliers.

There are no chirality outliers.

There are no torsion outliers.

There are no ring outliers.

No monomer is involved in short contacts.

5.7 Other polymers [i](#)

There are no such residues in this entry.

5.8 Polymer linkage issues [i](#)

There are no chain breaks in this entry.

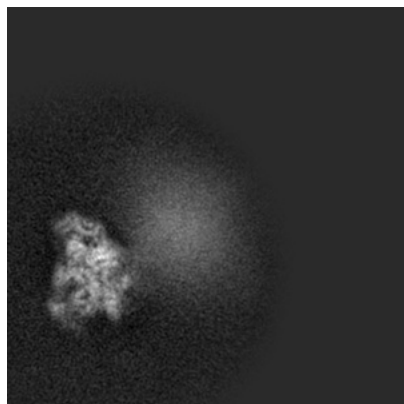
6 Map visualisation [i](#)

This section contains visualisations of the EMDB entry EMD-51617. These allow visual inspection of the internal detail of the map and identification of artifacts.

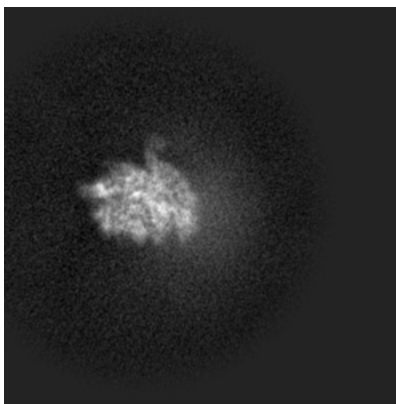
Images derived from a raw map, generated by summing the deposited half-maps, are presented below the corresponding image components of the primary map to allow further visual inspection and comparison with those of the primary map.

6.1 Orthogonal projections [i](#)

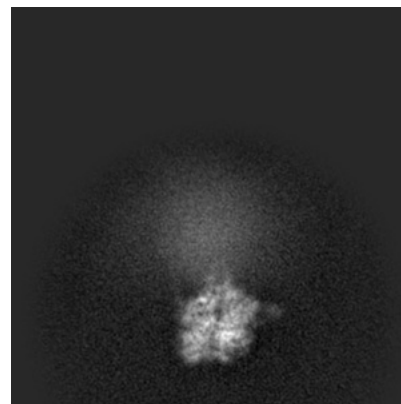
6.1.1 Primary map



X

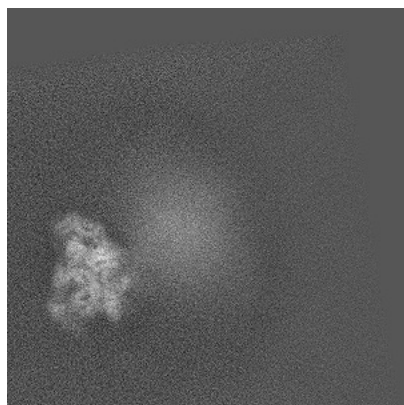


Y

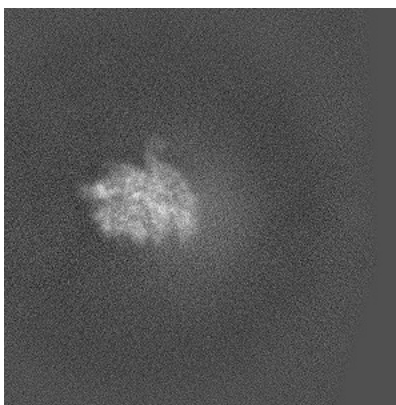


Z

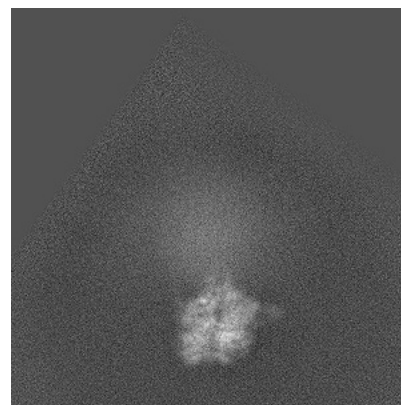
6.1.2 Raw map



X



Y

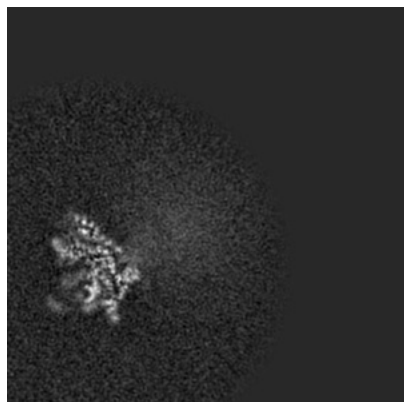


Z

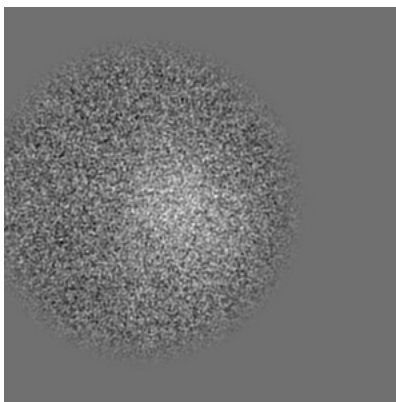
The images above show the map projected in three orthogonal directions.

6.2 Central slices [i](#)

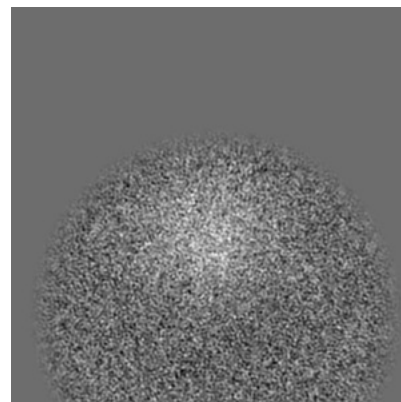
6.2.1 Primary map



X Index: 300

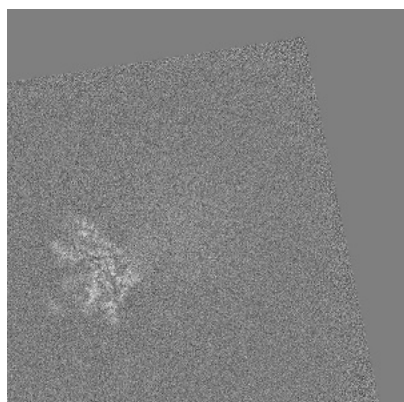


Y Index: 300

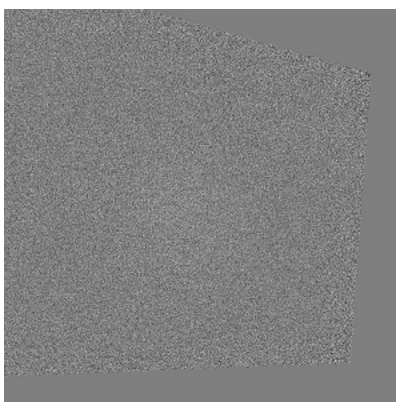


Z Index: 300

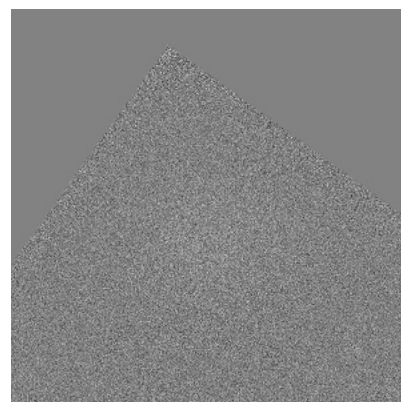
6.2.2 Raw map



X Index: 300



Y Index: 300

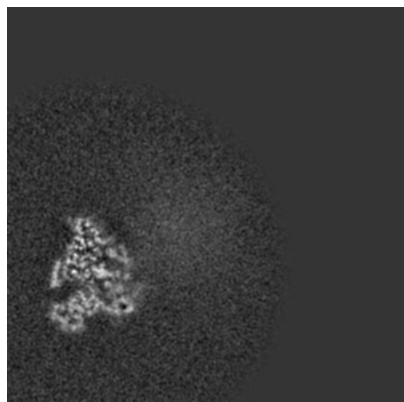


Z Index: 300

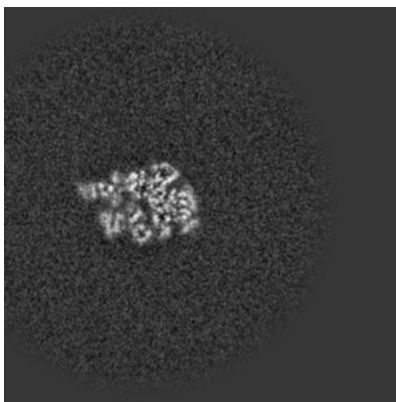
The images above show central slices of the map in three orthogonal directions.

6.3 Largest variance slices [i](#)

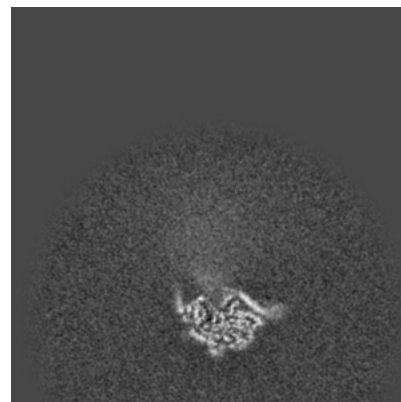
6.3.1 Primary map



X Index: 321

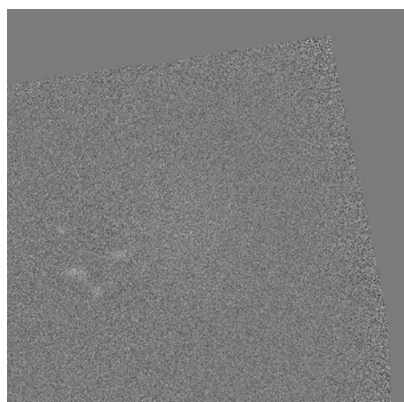


Y Index: 105

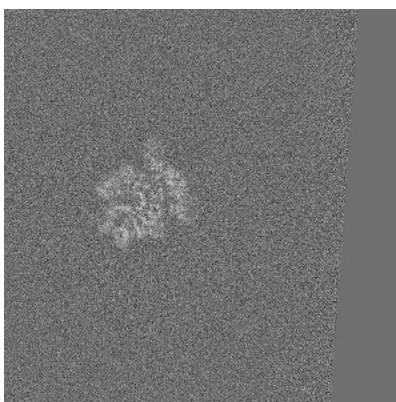


Z Index: 226

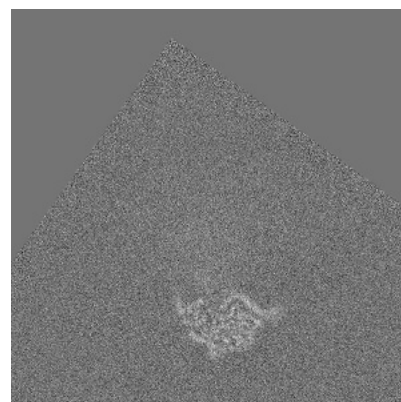
6.3.2 Raw map



X Index: 247



Y Index: 133

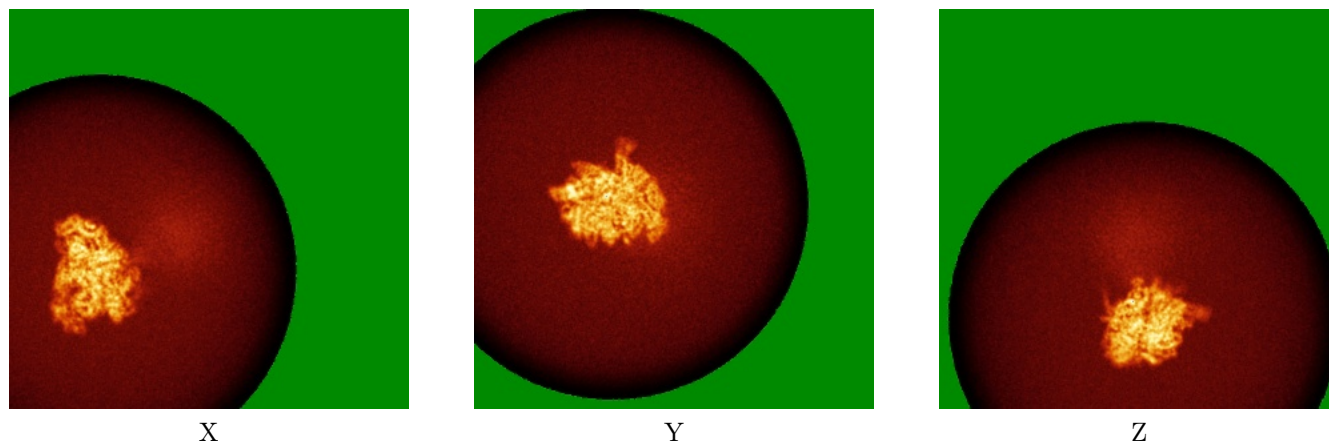


Z Index: 227

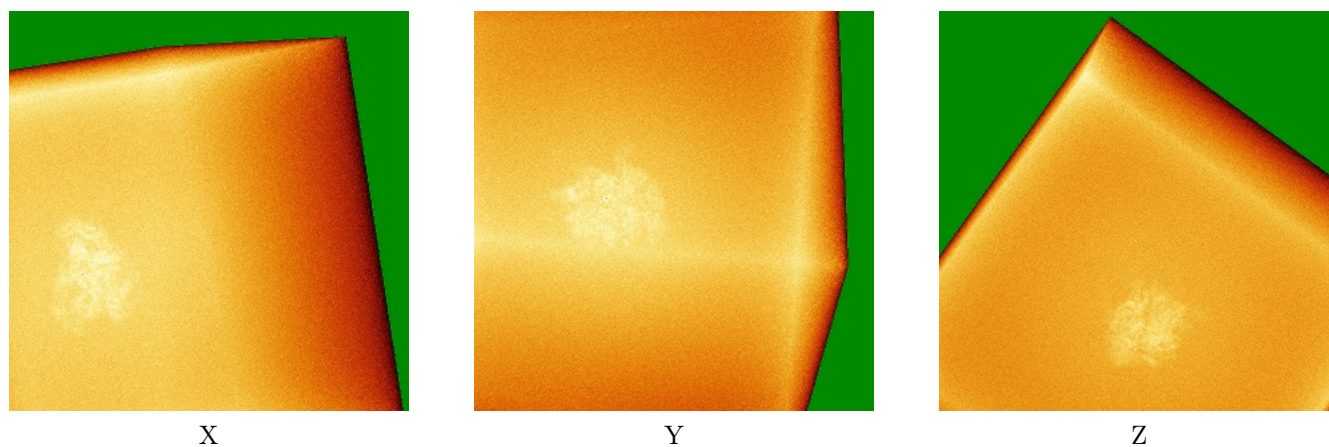
The images above show the largest variance slices of the map in three orthogonal directions.

6.4 Orthogonal standard-deviation projections (False-color) [i](#)

6.4.1 Primary map



6.4.2 Raw map



The images above show the map standard deviation projections with false color in three orthogonal directions. Minimum values are shown in green, max in blue, and dark to light orange shades represent small to large values respectively.

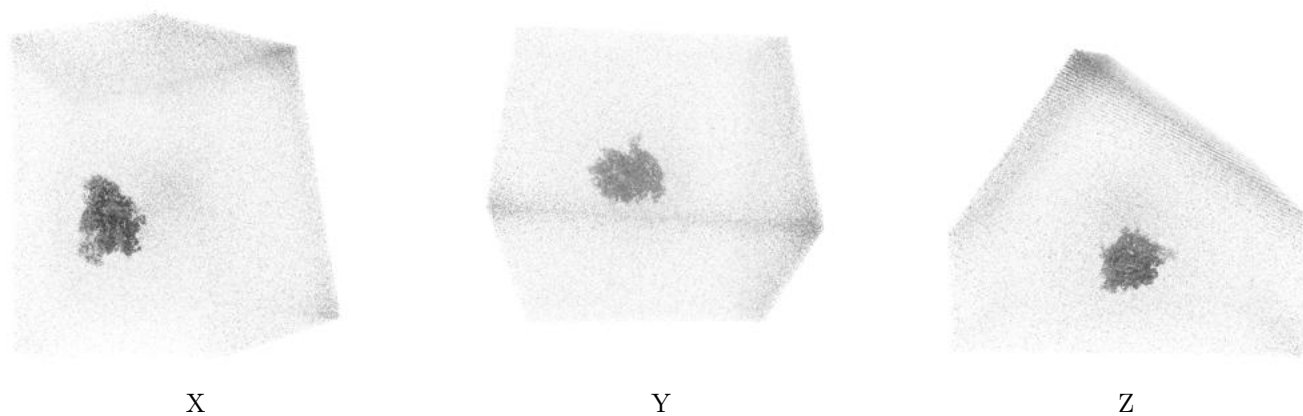
6.5 Orthogonal surface views [i](#)

6.5.1 Primary map



The images above show the 3D surface view of the map at the recommended contour level 0.197. These images, in conjunction with the slice images, may facilitate assessment of whether an appropriate contour level has been provided.

6.5.2 Raw map



These images show the 3D surface of the raw map. The raw map's contour level was selected so that its surface encloses the same volume as the primary map does at its recommended contour level.

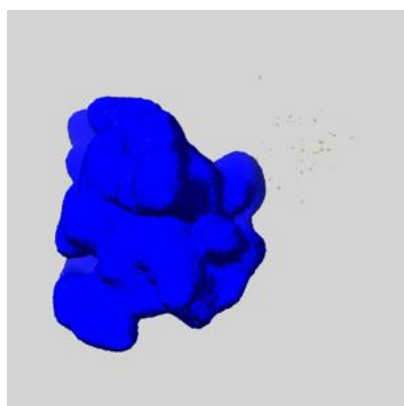
6.6 Mask visualisation [i](#)

This section shows the 3D surface view of the primary map at 50% transparency overlaid with the specified mask at 0% transparency

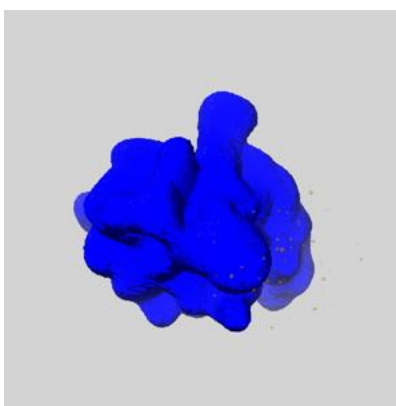
A mask typically either:

- Encompasses the whole structure
- Separates out a domain, a functional unit, a monomer or an area of interest from a larger structure

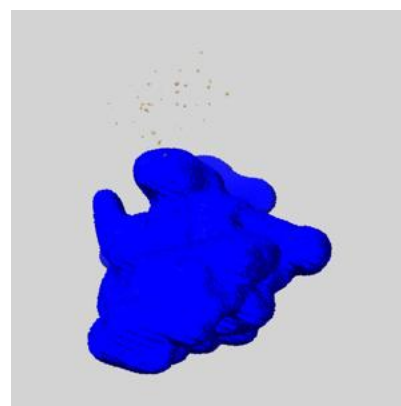
6.6.1 emd_51617_msk_1.map [i](#)



X



Y

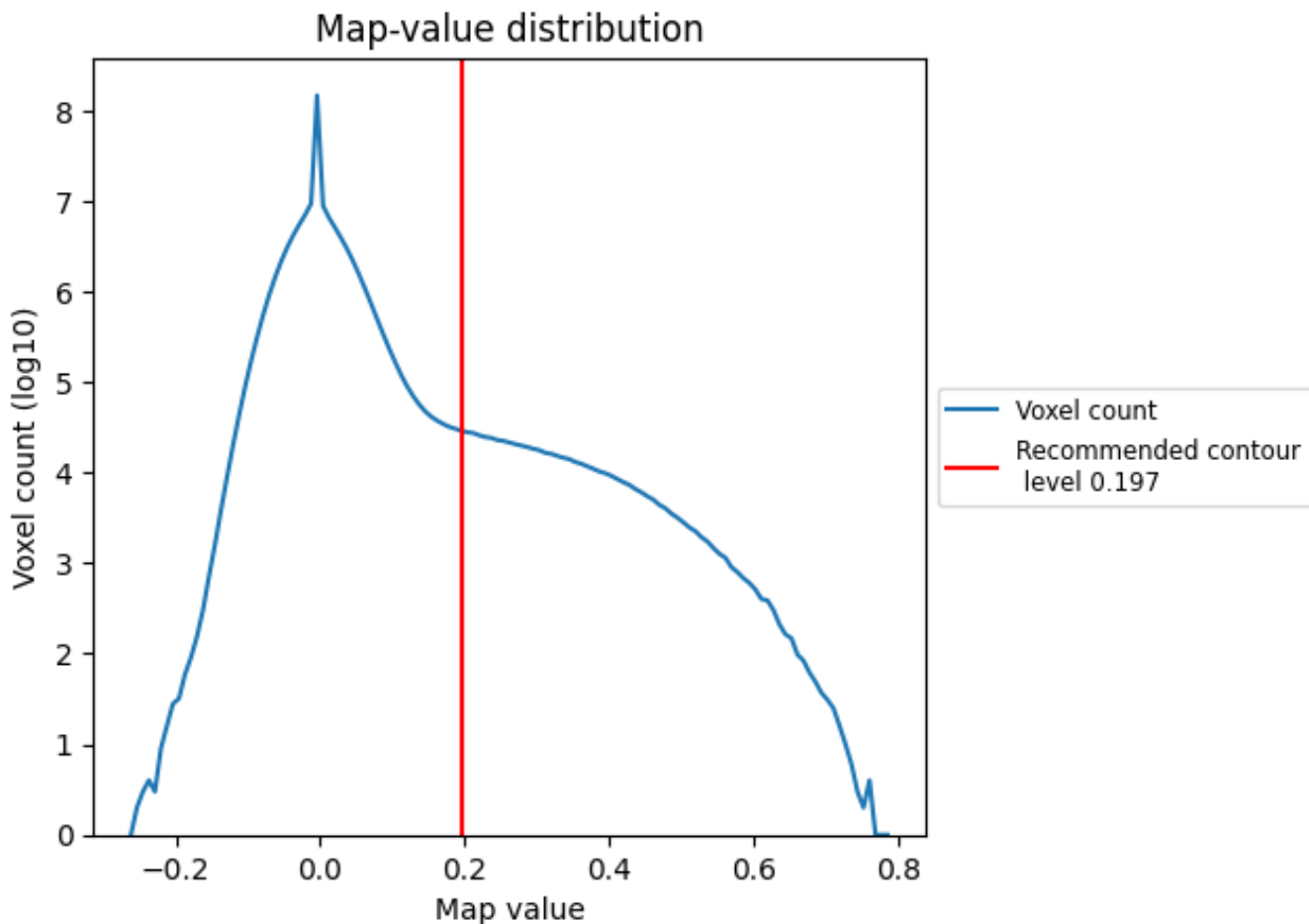


Z

7 Map analysis [i](#)

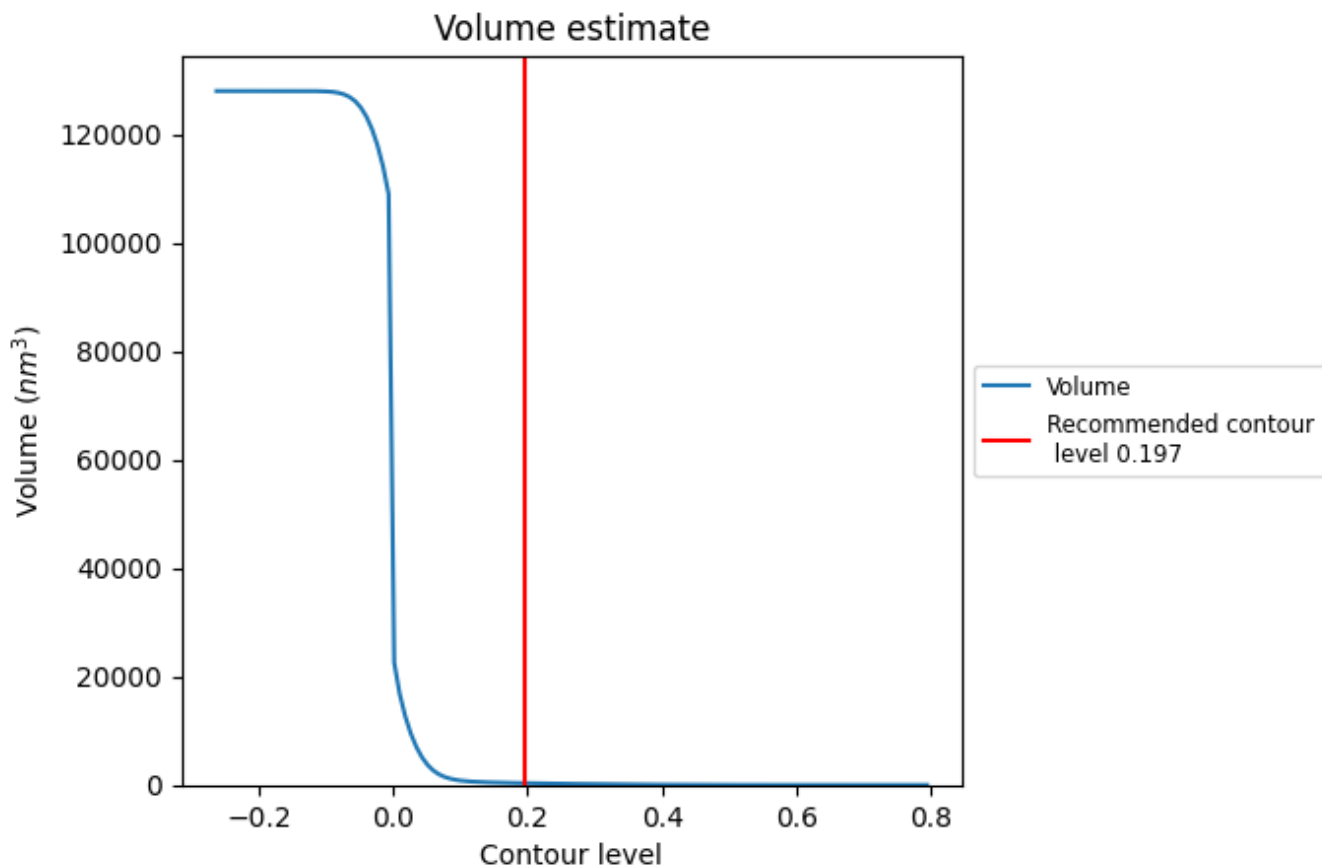
This section contains the results of statistical analysis of the map.

7.1 Map-value distribution [i](#)



The map-value distribution is plotted in 128 intervals along the x-axis. The y-axis is logarithmic. A spike in this graph at zero usually indicates that the volume has been masked.

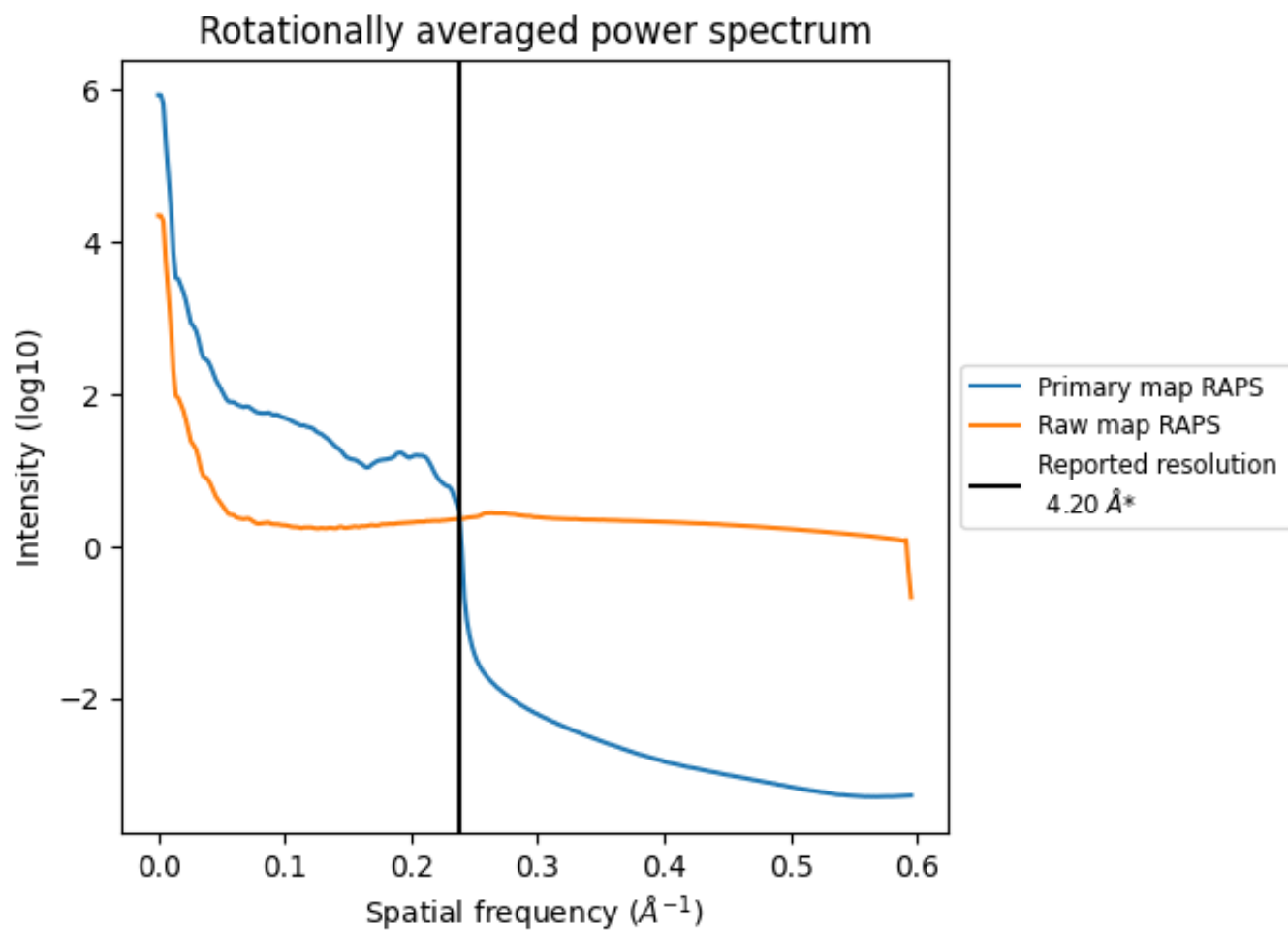
7.2 Volume estimate [i](#)



The volume at the recommended contour level is 328 nm^3 ; this corresponds to an approximate mass of 296 kDa.

The volume estimate graph shows how the enclosed volume varies with the contour level. The recommended contour level is shown as a vertical line and the intersection between the line and the curve gives the volume of the enclosed surface at the given level.

7.3 Rotationally averaged power spectrum [i](#)

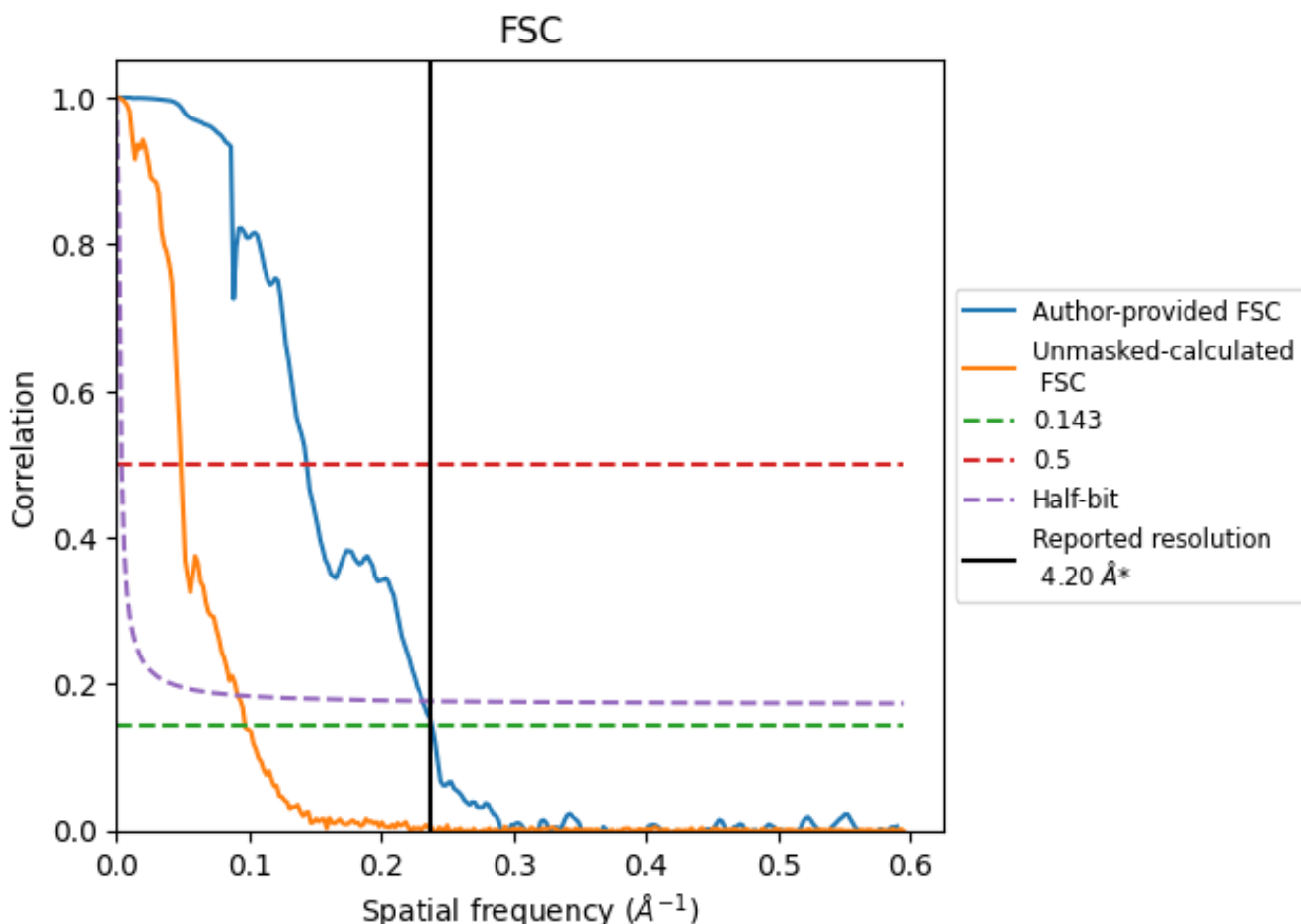


*Reported resolution corresponds to spatial frequency of 0.238 Å⁻¹

8 Fourier-Shell correlation [i](#)

Fourier-Shell Correlation (FSC) is the most commonly used method to estimate the resolution of single-particle and subtomogram-averaged maps. The shape of the curve depends on the imposed symmetry, mask and whether or not the two 3D reconstructions used were processed from a common reference. The reported resolution is shown as a black line. A curve is displayed for the half-bit criterion in addition to lines showing the 0.143 gold standard cut-off and 0.5 cut-off.

8.1 FSC [i](#)



*Reported resolution corresponds to spatial frequency of 0.238 Å⁻¹

8.2 Resolution estimates [i](#)

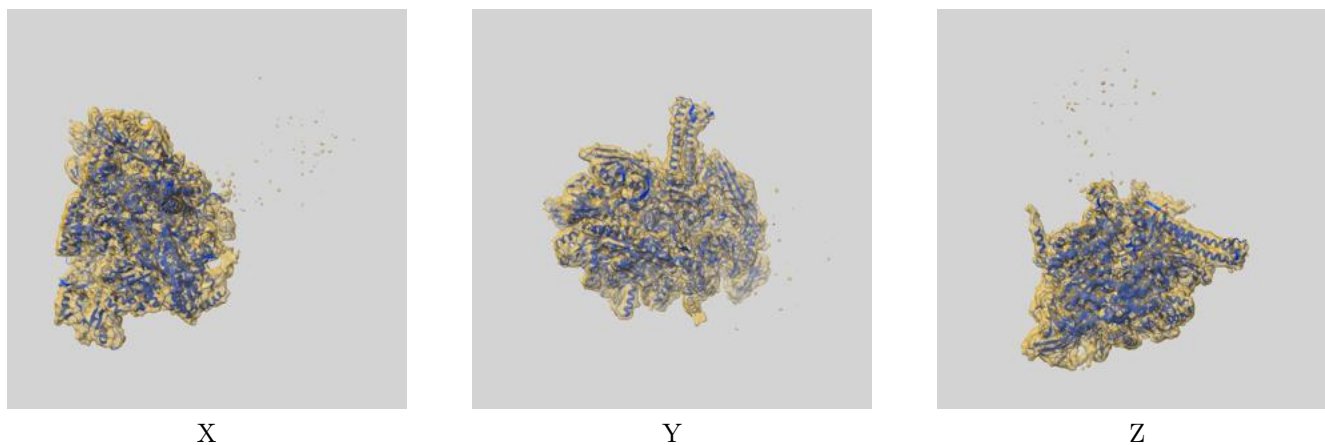
Resolution estimate (Å)	Estimation criterion (FSC cut-off)		
	0.143	0.5	Half-bit
Reported by author	4.20	-	-
Author-provided FSC curve	4.19	6.96	4.33
Unmasked-calculated*	10.30	20.62	10.96

*Resolution estimate based on FSC curve calculated by comparison of deposited half-maps. The value from deposited half-maps intersecting FSC 0.143 CUT-OFF 10.30 differs from the reported value 4.2 by more than 10 %

9 Map-model fit [i](#)

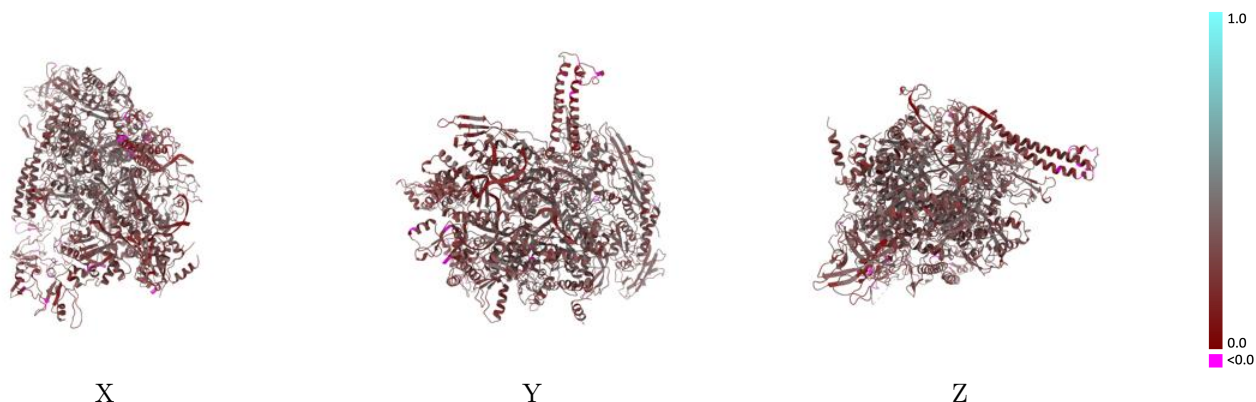
This section contains information regarding the fit between EMDB map EMD-51617 and PDB model 9GUR. Per-residue inclusion information can be found in section [3](#) on page [6](#).

9.1 Map-model overlay [i](#)



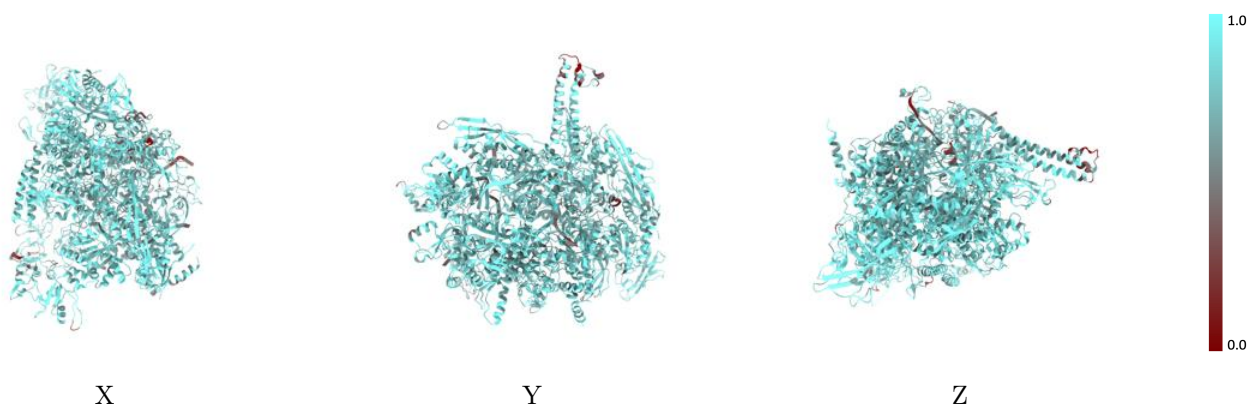
The images above show the 3D surface view of the map at the recommended contour level 0.197 at 50% transparency in yellow overlaid with a ribbon representation of the model coloured in blue. These images allow for the visual assessment of the quality of fit between the atomic model and the map.

9.2 Q-score mapped to coordinate model [\(i\)](#)



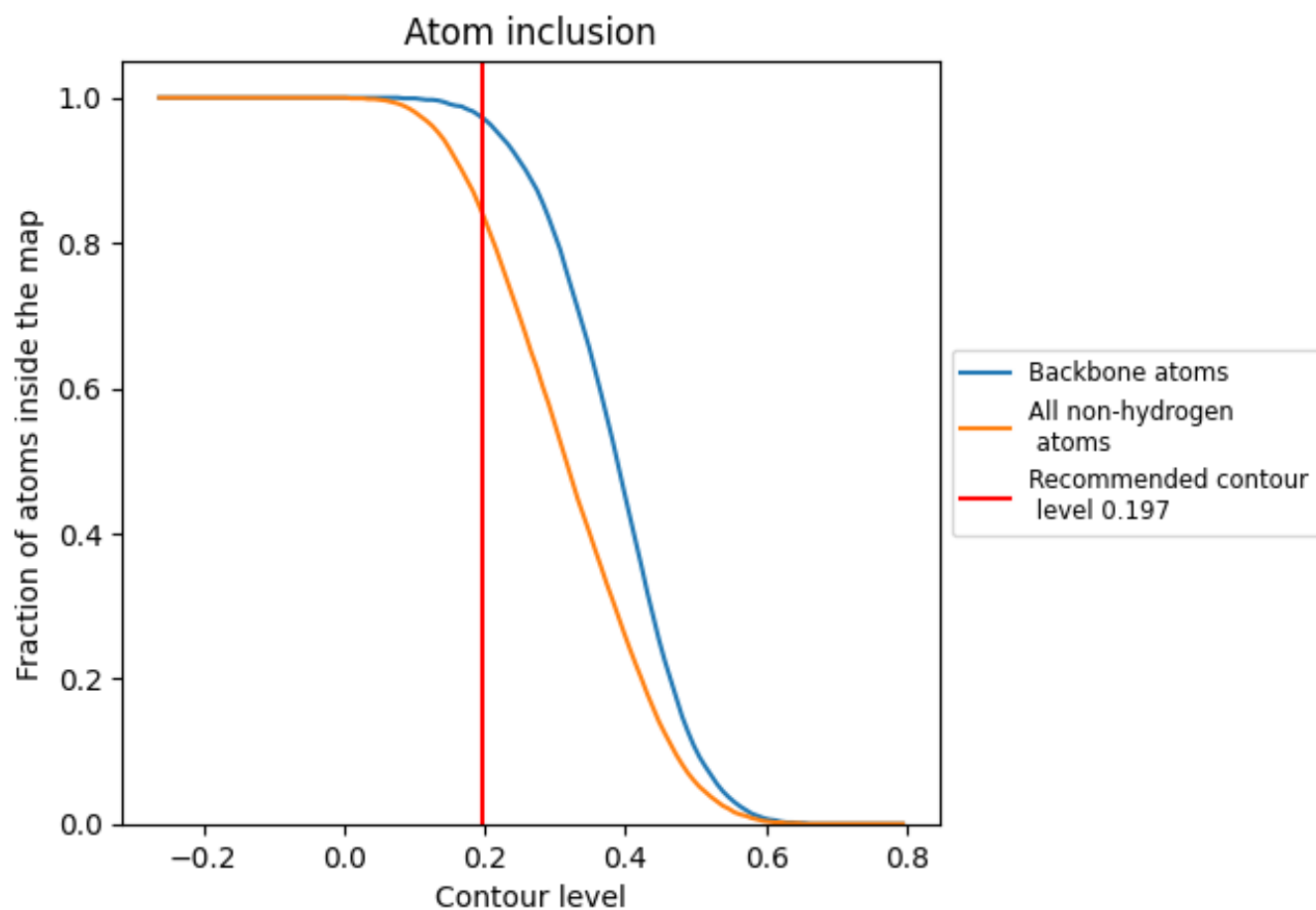
The images above show the model with each residue coloured according its Q-score. This shows their resolvability in the map with higher Q-score values reflecting better resolvability. Please note: Q-score is calculating the resolvability of atoms, and thus high values are only expected at resolutions at which atoms can be resolved. Low Q-score values may therefore be expected for many entries.

9.3 Atom inclusion mapped to coordinate model [\(i\)](#)



The images above show the model with each residue coloured according to its atom inclusion. This shows to what extent they are inside the map at the recommended contour level (0.197).





















9.4 Atom inclusion [i](#)



At the recommended contour level, 97% of all backbone atoms, 84% of all non-hydrogen atoms, are inside the map.

9.5 Map-model fit summary

The table lists the average atom inclusion at the recommended contour level (0.197) and Q-score for the entire model and for each chain.

Chain	Atom inclusion	Q-score
All	 0.8400	 0.3010
1	 0.8580	 0.3310
2	 0.8750	 0.3070
3	 0.8410	 0.3070
4	 0.8350	 0.3050
5	 0.8460	 0.3090
6	 0.8700	 0.2410
7	 0.7200	 0.1240
X	 0.7100	 0.2490
Z	 0.8940	 0.2750

