



wwPDB EM Validation Summary Report ⓘ

Dec 4, 2024 – 05:40 am GMT

PDB ID : 9GUS
EMDB ID : EMD-51618
Title : 30S mRNA delivery complex TEC resolved (30S only)
Authors : Rahil, H.; Weixlbaumer, A.; Webster, M.W.
Deposited on : 2024-09-20
Resolution : 3.50 Å (reported)

This is a wwPDB EM Validation Summary Report for a publicly released PDB entry.

We welcome your comments at validation@mail.wwpdb.org

A user guide is available at

<https://www.wwpdb.org/validation/2017/EMValidationReportHelp>

with specific help available everywhere you see the ⓘ symbol.

The types of validation reports are described at

<http://www.wwpdb.org/validation/2017/FAQs#types>.

The following versions of software and data (see [references ⓘ](#)) were used in the production of this report:

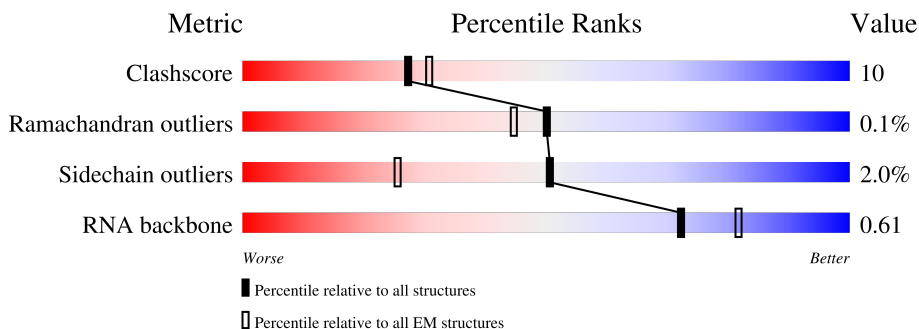
EMDB validation analysis : 0.0.1.dev113
Mogul : 1.8.4, CSD as541be (2020)
MolProbity : 4.02b-467
Percentile statistics : 20231227.v01 (using entries in the PDB archive December 27th 2023)
MapQ : 1.9.13
Ideal geometry (proteins) : Engh & Huber (2001)
Ideal geometry (DNA, RNA) : Parkinson et al. (1996)
Validation Pipeline (wwPDB-VP) : 2.40

1 Overall quality at a glance

The following experimental techniques were used to determine the structure:
ELECTRON MICROSCOPY

The reported resolution of this entry is 3.50 Å.

Percentile scores (ranging between 0-100) for global validation metrics of the entry are shown in the following graphic. The table shows the number of entries on which the scores are based.



Metric	Whole archive (#Entries)	EM structures (#Entries)
Clashscore	210492	15764
Ramachandran outliers	207382	16835
Sidechain outliers	206894	16415
RNA backbone	6643	2191

The table below summarises the geometric issues observed across the polymeric chains and their fit to the map. The red, orange, yellow and green segments of the bar indicate the fraction of residues that contain outliers for ≥ 3 , 2, 1 and 0 types of geometric quality criteria respectively. A grey segment represents the fraction of residues that are not modelled. The numeric value for each fraction is indicated below the corresponding segment, with a dot representing fractions $\leq 5\%$. The upper red bar (where present) indicates the fraction of residues that have poor fit to the EM map (all-atom inclusion $< 40\%$). The numeric value is given above the bar.

Mol	Chain	Length	Quality of chain
1	A	1541	47% (green), 46% (yellow), 7% (orange)
2	B	557	24% (green), 6% (yellow), 69% (grey)
3	C	241	78% (green), 15% (yellow), 6% (grey)
4	D	233	77% (green), 13% (yellow), 9% (grey)
5	E	206	84% (green), 15% (yellow)
6	F	156	83% (green), 17% (yellow)
7	G	131	61% (green), 18% (yellow), 21% (grey)

Continued on next page...

Continued from previous page...

Mol	Chain	Length	Quality of chain
8	H	156	76% 21% ..
9	I	130	90% 8% ..
10	J	130	73% 25% ..
11	K	103	75% 22% ..
12	L	129	64% 27% 9%
13	M	124	77% 20% ..
14	N	118	75% 21% ..
15	O	101	86% 13% .
16	P	89	90% 8% ..
17	Q	82	85% 15%
18	R	84	76% 19% 5%
19	S	75	65% 24% 11%
20	T	92	71% 20% 10%
21	U	87	85% 14% .
22	V	71	72% 25% ..
23	W	77	23% 64% 13%
24	X	53	11% 11% 11% 66%

2 Entry composition [i](#)

There are 25 unique types of molecules in this entry. The entry contains 55373 atoms, of which 0 are hydrogens and 0 are deuteriums.

In the tables below, the AltConf column contains the number of residues with at least one atom in alternate conformation and the Trace column contains the number of residues modelled with at most 2 atoms.

- Molecule 1 is a RNA chain called 16S ribosomal RNA.

Mol	Chain	Residues	Atoms					AltConf	Trace
			Total	C	N	O	P		
1	A	1539	33023	14736	6046	10702	1539	0	0

- Molecule 2 is a protein called 30S ribosomal protein S1.

Mol	Chain	Residues	Atoms					AltConf	Trace
			Total	C	N	O	S		
2	B	174	1100	674	197	228	1	0	0

- Molecule 3 is a protein called 30S ribosomal protein S2.

Mol	Chain	Residues	Atoms					AltConf	Trace
			Total	C	N	O	S		
3	C	226	1764	1116	316	324	8	0	0

- Molecule 4 is a protein called Small ribosomal subunit protein uS3.

Mol	Chain	Residues	Atoms					AltConf	Trace
			Total	C	N	O	S		
4	D	211	1653	1046	310	293	4	0	0

- Molecule 5 is a protein called Small ribosomal subunit protein uS4.

Mol	Chain	Residues	Atoms					AltConf	Trace
			Total	C	N	O	S		
5	E	205	1643	1026	315	298	4	0	0

- Molecule 6 is a protein called 30S ribosomal protein S5.

Mol	Chain	Residues	Atoms					AltConf	Trace
			Total	C	N	O	S		
6	F	156	1152	717	217	212	6	0	0

- Molecule 7 is a protein called Small ribosomal subunit protein bS6.

Mol	Chain	Residues	Atoms					AltConf	Trace
			Total	C	N	O	S		
7	G	104	848	536	153	152	7	0	0

- Molecule 8 is a protein called 30S ribosomal protein S7.

Mol	Chain	Residues	Atoms					AltConf	Trace
			Total	C	N	O	S		
8	H	153	1203	750	231	218	4	0	0

- Molecule 9 is a protein called 30S ribosomal protein S8.

Mol	Chain	Residues	Atoms					AltConf	Trace
			Total	C	N	O	S		
9	I	129	979	616	173	184	6	0	0

- Molecule 10 is a protein called 30S ribosomal protein S9.

Mol	Chain	Residues	Atoms					AltConf	Trace
			Total	C	N	O	S		
10	J	128	1031	639	207	182	3	0	0

- Molecule 11 is a protein called 30S ribosomal protein S10.

Mol	Chain	Residues	Atoms					AltConf	Trace
			Total	C	N	O	S		
11	K	101	808	504	155	148	1	0	0

- Molecule 12 is a protein called 30S ribosomal protein S11.

Mol	Chain	Residues	Atoms					AltConf	Trace
			Total	C	N	O	S		
12	L	117	877	540	174	160	3	0	0

- Molecule 13 is a protein called 30S ribosomal protein S12.

Mol	Chain	Residues	Atoms					AltConf	Trace
			Total	C	N	O	S		
13	M	122	951	588	195	163	5	0	0

- Molecule 14 is a protein called 30S ribosomal protein S13.

Mol	Chain	Residues	Atoms					AltConf	Trace
14	N	115	Total	C	N	O	S	0	0
			891	552	179	157	3		

- Molecule 15 is a protein called 30S ribosomal protein S14.

Mol	Chain	Residues	Atoms					AltConf	Trace
15	O	100	Total	C	N	O	S	0	0
			805	499	164	139	3		

- Molecule 16 is a protein called Small ribosomal subunit protein uS15.

Mol	Chain	Residues	Atoms					AltConf	Trace
16	P	88	Total	C	N	O	S	0	0
			714	439	144	130	1		

- Molecule 17 is a protein called 30S ribosomal protein S16.

Mol	Chain	Residues	Atoms					AltConf	Trace
17	Q	82	Total	C	N	O	S	0	0
			649	406	128	114	1		

- Molecule 18 is a protein called 30S ribosomal protein S17.

Mol	Chain	Residues	Atoms					AltConf	Trace
18	R	80	Total	C	N	O	S	0	0
			648	411	121	113	3		

- Molecule 19 is a protein called 30S ribosomal protein S18.

Mol	Chain	Residues	Atoms					AltConf	Trace
19	S	67	Total	C	N	O	S	0	0
			554	350	104	99	1		

- Molecule 20 is a protein called 30S ribosomal protein S19.

Mol	Chain	Residues	Atoms					AltConf	Trace
20	T	83	Total	C	N	O	S	0	0
			663	424	126	111	2		

- Molecule 21 is a protein called 30S ribosomal protein S20.

Mol	Chain	Residues	Atoms					AltConf	Trace
21	U	86	Total	C	N	O	S	0	0
			670	414	138	115	3		

- Molecule 22 is a protein called 30S ribosomal protein S21.

Mol	Chain	Residues	Atoms					AltConf	Trace
22	V	70	Total	C	N	O	S	0	0
			590	366	125	98	1		

- Molecule 23 is a RNA chain called tRNA(fmet) P-site.

Mol	Chain	Residues	Atoms					AltConf	Trace	
23	W	77	Total	C	N	O	P	S	0	0
			1645	734	297	536	77	1		

- Molecule 24 is a RNA chain called mRNA.

Mol	Chain	Residues	Atoms					AltConf	Trace
24	X	18	Total	C	N	O	P	0	0
			387	173	70	126	18		

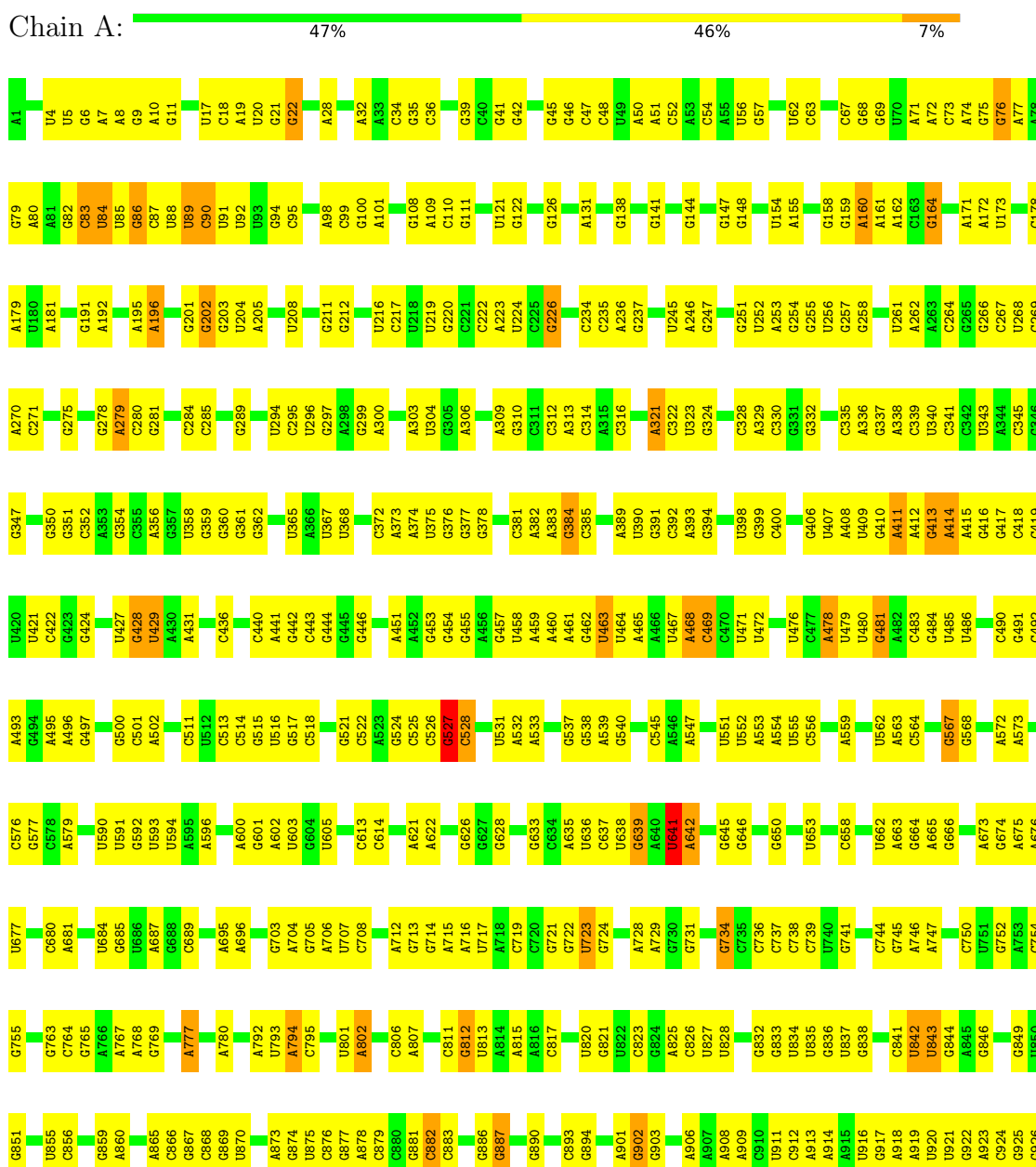
- Molecule 25 is MAGNESIUM ION (three-letter code: MG) (formula: Mg).

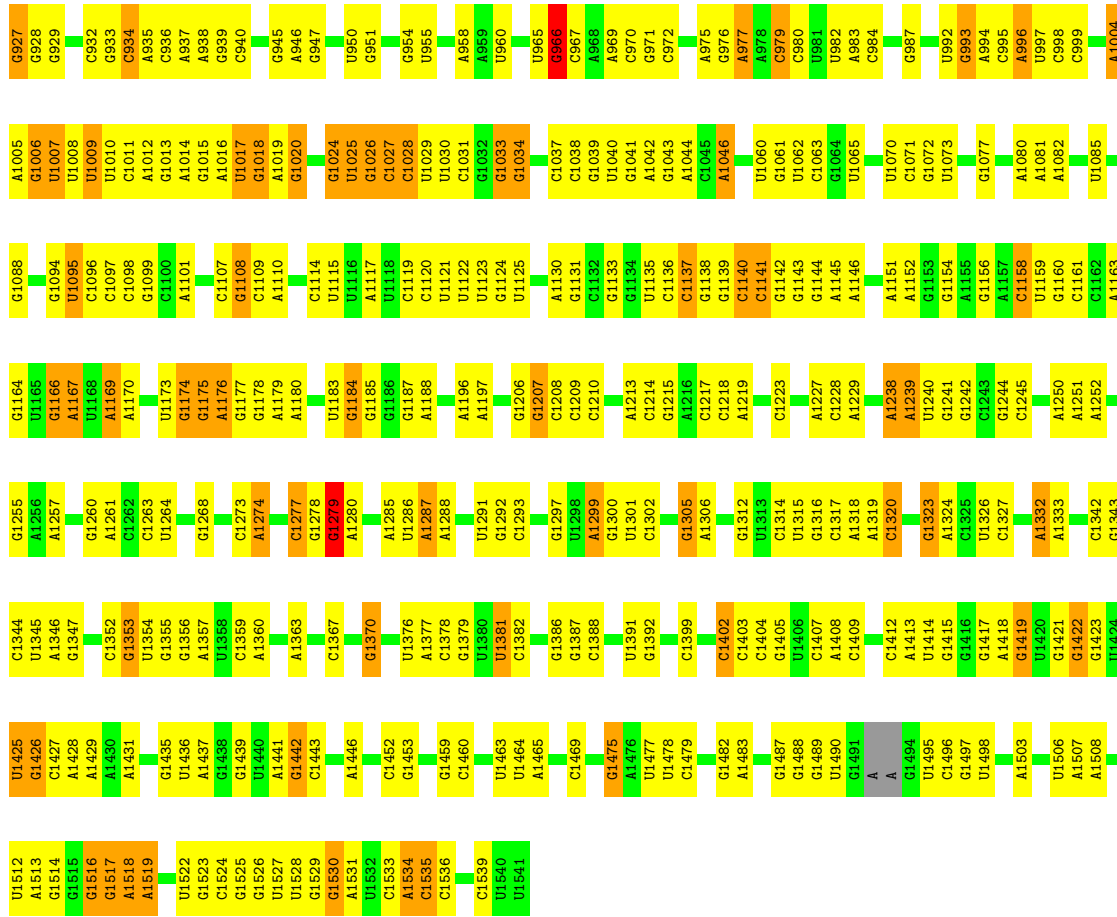
Mol	Chain	Residues	Atoms		AltConf
25	A	124	Total	Mg	0
			124	124	
25	M	1	Total	Mg	0
			1	1	

3 Residue-property plots

These plots are drawn for all protein, RNA, DNA and oligosaccharide chains in the entry. The first graphic for a chain summarises the proportions of the various outlier classes displayed in the second graphic. The second graphic shows the sequence view annotated by issues in geometry and atom inclusion in map density. Residues are color-coded according to the number of geometric quality criteria for which they contain at least one outlier: green = 0, yellow = 1, orange = 2 and red = 3 or more. A red diamond above a residue indicates a poor fit to the EM map for this residue (all-atom inclusion < 40%). Stretches of 2 or more consecutive residues without any outlier are shown as a green connector. Residues present in the sample, but not in the model, are shown in grey.

- Molecule 1: 16S ribosomal RNA





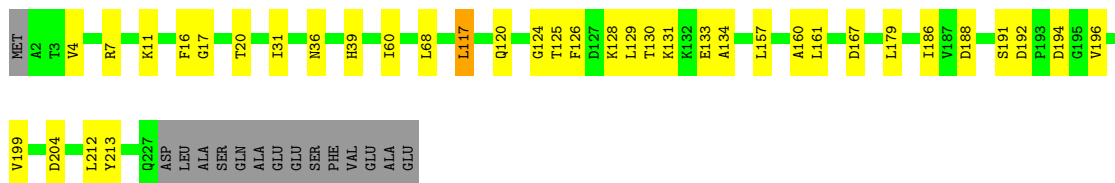
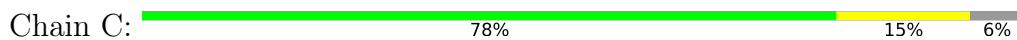
• Molecule 2: 30S ribosomal protein S1



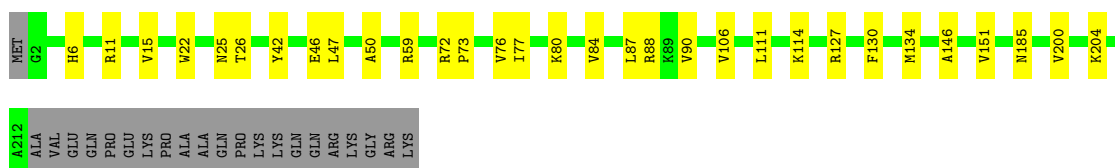
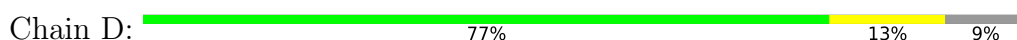
H1	V122	ASP	GLY	ILE	GLY	ASP
S4	A129	MET	ARG	SER	GLU	ALA
Q7	R142	TRP	VAL	GLY	ALA	LYS
T18	V166	LYS	ASN	LEU	VAL	ALA
A30	S169	ARG	THR	LEU	ARG	THR
L37	R170	VAL	ASP	LYS	THR	LYS
W38	R171	HIS	THR	ALA	LYS	ALA
D39	I174	PRO	ASP	ASN	CYS	ASP
A40	I174	GLU	VAL	PHE	PHE	VAL
G41	I174	ILE	VAL	TRP	VAL	VAL
L42	I174	ASN	ILE	GLN	GLU	ILE
R43	I174	GLY	ASN	PHE	ALA	ALA
S46	I174	ASN	VAL	ALA	VAL	VAL
A50	I174	THR	GLU	THR	LEU	ALA
F53	I174	ILE	GLY	HIS	GLN	SER
K54	I174	ARG	THR	VAL	ASN	GLU
N55	I174	LEU	THR	GLY	VAL	ARG
G58	I174	LEU	THR	VAL	ARG	GLU
E61	I174	PHE	THR	GLY	ARG	VAL
Q63	I174	ASP	THR	GLY	ASP	GLU
D66	I174	LEU	THR	ILE	LEU	VAL
D69	I174	LEU	THR	ILE	LEU	VAL
V70	I174	LEU	THR	ILE	LEU	VAL
A71	I174	LEU	THR	ILE	LEU	VAL
L72	I174	LEU	THR	ILE	LEU	VAL
D73	I174	LEU	THR	ILE	LEU	VAL
A74	I174	LEU	THR	ILE	LEU	VAL
E76	I174	LEU	THR	ILE	LEU	VAL
F79	I174	LEU	THR	ILE	LEU	VAL
T82	I174	LEU	THR	ILE	LEU	VAL
L83	I174	LEU	THR	ILE	LEU	VAL
L84	I174	LEU	THR	ILE	LEU	VAL
S85	I174	LEU	THR	ILE	LEU	VAL
R86	I174	LEU	THR	ILE	LEU	VAL
A89	I174	LEU	THR	ILE	LEU	VAL
K90	I174	LEU	THR	ILE	LEU	VAL
A101	I174	LEU	THR	ILE	LEU	VAL
A105	I174	LEU	THR	ILE	LEU	VAL
I112	I174	LEU	THR	ILE	LEU	VAL
		THR	THR	THR	THR	ALA

LYS ASP GLU ALA ASP GLU LYS ASP ALA ALA ILE THR VAL ASN LYS GLN GLU ASP ALA ASN PHE SER ASN ALA MET ALA ALA PHE PHE LYS ALA ALA LYS GLY GLU

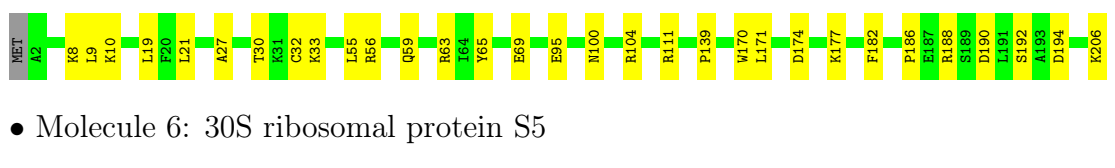
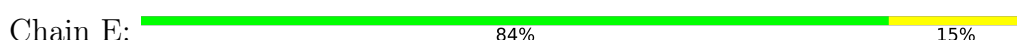
- Molecule 3: 30S ribosomal protein S2



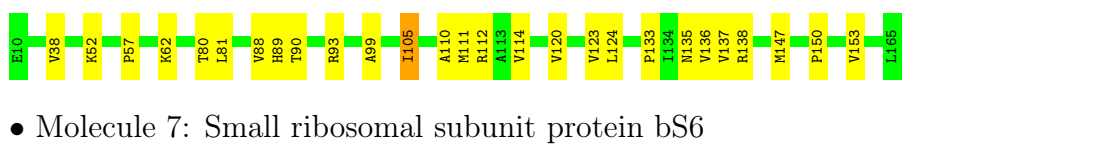
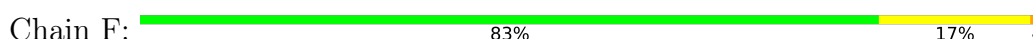
- Molecule 4: Small ribosomal subunit protein uS3



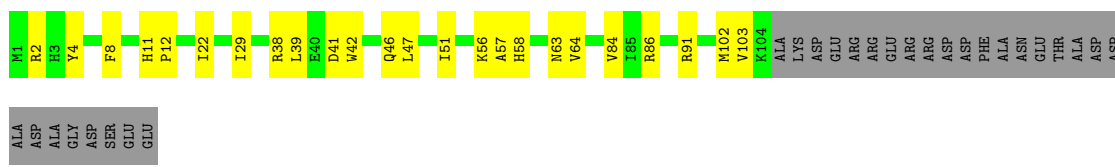
- Molecule 5: Small ribosomal subunit protein uS4



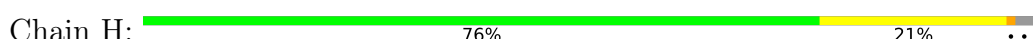
- Molecule 6: 30S ribosomal protein S5

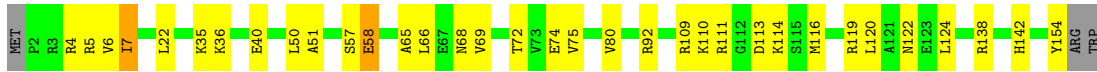


- Molecule 7: Small ribosomal subunit protein bS6



- Molecule 8: 30S ribosomal protein S7





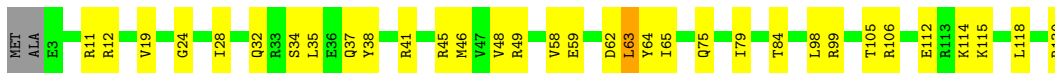
- Molecule 9: 30S ribosomal protein S8

Chain I: 90% 8% ..



- Molecule 10: 30S ribosomal protein S9

Chain J: 73% 25% ..



- Molecule 11: 30S ribosomal protein S10

Chain K: 75% 22% ..



- Molecule 12: 30S ribosomal protein S11

Chain L: 64% 27% 9%



- Molecule 13: 30S ribosomal protein S12

Chain M: 77% 20% ..



- Molecule 14: 30S ribosomal protein S13

Chain N: 75% 21% ..




- Molecule 15: 30S ribosomal protein S14

Chain O:  86% 13%




- Molecule 16: Small ribosomal subunit protein uS15

Chain P:  90% 8%



- Molecule 17: 30S ribosomal protein S16

Chain Q:  85% 15%



- Molecule 18: 30S ribosomal protein S17

Chain R:  76% 19% 5%



- Molecule 19: 30S ribosomal protein S18

Chain S:  65% 24% 11%




- Molecule 20: 30S ribosomal protein S19

Chain T:  71% 20% 10%

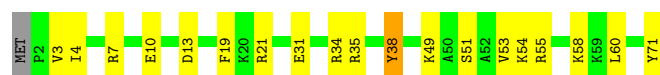


- Molecule 21: 30S ribosomal protein S20

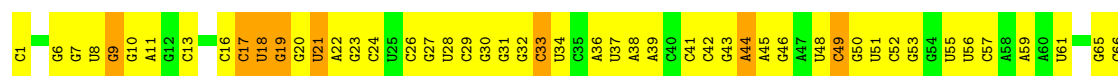
Chain U:  85% 14%



- Molecule 22: 30S ribosomal protein S21



● Molecule 23: tRNA(fmet) P-site



● Molecule 24: mRNA



4 Experimental information

Property	Value	Source
EM reconstruction method	SINGLE PARTICLE	Depositor
Imposed symmetry	POINT, Not provided	
Number of particles used	7285	Depositor
Resolution determination method	FSC 0.143 CUT-OFF	Depositor
CTF correction method	PHASE FLIPPING AND AMPLITUDE CORRECTION	Depositor
Microscope	FEI TITAN KRIOS	Depositor
Voltage (kV)	300	Depositor
Electron dose ($e^-/\text{\AA}^2$)	49.95	Depositor
Minimum defocus (nm)	800	Depositor
Maximum defocus (nm)	2000	Depositor
Magnification	Not provided	
Image detector	GATAN K2 QUANTUM (4k x 4k)	Depositor
Maximum map value	4.336	Depositor
Minimum map value	-1.468	Depositor
Average map value	0.002	Depositor
Map value standard deviation	0.141	Depositor
Recommended contour level	0.159	Depositor
Map size (\AA)	503.99997, 503.99997, 503.99997	wwPDB
Map dimensions	600, 600, 600	wwPDB
Map angles ($^\circ$)	90.0, 90.0, 90.0	wwPDB
Pixel spacing (\AA)	0.84, 0.84, 0.84	Depositor

5 Model quality [i](#)

5.1 Standard geometry [i](#)

Bond lengths and bond angles in the following residue types are not validated in this section: D2T, MG, OMC, 5MU, UR3, PSU, G7M, 2MG, MA6, H2U, 5MC, 4OC, 4SU

The Z score for a bond length (or angle) is the number of standard deviations the observed value is removed from the expected value. A bond length (or angle) with $|Z| > 5$ is considered an outlier worth inspection. RMSZ is the root-mean-square of all Z scores of the bond lengths (or angles).

Mol	Chain	Bond lengths		Bond angles	
		RMSZ	# Z >5	RMSZ	# Z >5
1	A	0.45	0/36692	0.84	14/57230 (0.0%)
2	B	0.29	0/1105	0.52	1/1505 (0.1%)
3	C	0.30	0/1795	0.50	0/2418
4	D	0.32	0/1680	0.53	0/2263
5	E	0.29	0/1665	0.52	0/2227
6	F	0.30	0/1165	0.52	0/1568
7	G	0.32	0/867	0.54	0/1171
8	H	0.28	0/1219	0.55	0/1635
9	I	0.28	0/989	0.49	0/1326
10	J	0.32	0/1043	0.58	0/1387
11	K	0.30	0/818	0.59	0/1105
12	L	0.27	0/893	0.53	0/1205
13	M	0.30	0/954	0.57	0/1279
14	N	0.27	0/900	0.57	0/1204
15	O	0.31	0/817	0.55	0/1088
16	P	0.27	0/722	0.53	0/964
17	Q	0.29	0/659	0.56	0/884
18	R	0.27	0/657	0.52	0/881
19	S	0.30	0/563	0.54	0/754
20	T	0.32	0/680	0.51	0/915
21	U	0.30	0/676	0.47	0/895
22	V	0.28	0/598	0.59	0/792
23	W	0.37	1/1725 (0.1%)	0.83	0/2687
24	X	0.39	0/433	0.98	3/673 (0.4%)
All	All	0.40	1/59315 (0.0%)	0.76	18/88056 (0.0%)

All (1) bond length outliers are listed below:

Mol	Chain	Res	Type	Atoms	Z	Observed(Å)	Ideal(Å)
23	W	1	C	OP3-P	-10.49	1.48	1.61

The worst 5 of 18 bond angle outliers are listed below:

Mol	Chain	Res	Type	Atoms	Z	Observed(°)	Ideal(°)
1	A	882	C	N3-C2-O2	-8.07	116.25	121.90
2	B	43	LYS	CD-CE-NZ	-6.69	96.32	111.70
1	A	812	G	O4'-C1'-N9	6.57	113.45	108.20
1	A	1158	C	C2-N1-C1'	5.92	125.31	118.80
1	A	979	C	C2-N1-C1'	5.85	125.23	118.80

There are no chirality outliers.

There are no planarity outliers.

5.2 Too-close contacts [i](#)

In the following table, the Non-H and H(model) columns list the number of non-hydrogen atoms and hydrogen atoms in the chain respectively. The H(added) column lists the number of hydrogen atoms added and optimized by MolProbity. The Clashes column lists the number of clashes within the asymmetric unit, whereas Symm-Clashes lists symmetry-related clashes.

Mol	Chain	Non-H	H(model)	H(added)	Clashes	Symm-Clashes
1	A	33023	0	16643	575	0
2	B	1100	0	880	26	0
3	C	1764	0	1788	22	0
4	D	1653	0	1727	17	0
5	E	1643	0	1707	24	0
6	F	1152	0	1194	15	0
7	G	848	0	846	12	0
8	H	1203	0	1254	22	0
9	I	979	0	1031	8	0
10	J	1031	0	1076	20	0
11	K	808	0	845	12	0
12	L	877	0	887	26	0
13	M	951	0	1012	19	0
14	N	891	0	952	16	0
15	O	805	0	844	10	0
16	P	714	0	734	8	0
17	Q	649	0	666	8	0
18	R	648	0	691	12	0
19	S	554	0	573	12	0
20	T	663	0	688	15	0
21	U	670	0	719	10	0
22	V	590	0	629	13	0
23	W	1645	0	841	51	0

Continued on next page...

Continued from previous page...

Mol	Chain	Non-H	H(model)	H(added)	Clashes	Symm-Clashes
24	X	387	0	193	10	0
25	A	124	0	0	0	0
25	M	1	0	0	0	0
All	All	55373	0	38420	885	0

The all-atom clashscore is defined as the number of clashes found per 1000 atoms (including hydrogen atoms). The all-atom clashscore for this structure is 10.

The worst 5 of 885 close contacts within the same asymmetric unit are listed below, sorted by their clash magnitude.

Atom-1	Atom-2	Interatomic distance (Å)	Clash overlap (Å)
1:A:1425:U:H3	1:A:1475:G:H1	1.02	0.99
23:W:51:U:H3	23:W:65:G:H1	0.93	0.93
1:A:664:G:H22	1:A:741:G:H1	1.21	0.87
1:A:1422:G:H1	1:A:1478:U:H3	1.21	0.87
1:A:713:G:H2'	1:A:714:G:C8	2.13	0.82

There are no symmetry-related clashes.

5.3 Torsion angles [i](#)

5.3.1 Protein backbone [i](#)

In the following table, the Percentiles column shows the percent Ramachandran outliers of the chain as a percentile score with respect to all PDB entries followed by that with respect to all EM entries.

The Analysed column shows the number of residues for which the backbone conformation was analysed, and the total number of residues.

Mol	Chain	Analysed	Favoured	Allowed	Outliers	Percentiles	
2	B	172/557 (31%)	162 (94%)	10 (6%)	0	100	100
3	C	224/241 (93%)	211 (94%)	13 (6%)	0	100	100
4	D	209/233 (90%)	202 (97%)	6 (3%)	1 (0%)	25	59
5	E	203/206 (98%)	202 (100%)	1 (0%)	0	100	100
6	F	154/156 (99%)	146 (95%)	8 (5%)	0	100	100
7	G	102/131 (78%)	95 (93%)	7 (7%)	0	100	100
8	H	151/156 (97%)	146 (97%)	5 (3%)	0	100	100

Continued on next page...

Continued from previous page...

Mol	Chain	Analysed	Favoured	Allowed	Outliers	Percentiles	
9	I	127/130 (98%)	125 (98%)	2 (2%)	0	100	100
10	J	126/130 (97%)	120 (95%)	6 (5%)	0	100	100
11	K	99/103 (96%)	97 (98%)	2 (2%)	0	100	100
12	L	115/129 (89%)	107 (93%)	8 (7%)	0	100	100
13	M	119/124 (96%)	113 (95%)	5 (4%)	1 (1%)	16	51
14	N	113/118 (96%)	111 (98%)	2 (2%)	0	100	100
15	O	98/101 (97%)	97 (99%)	1 (1%)	0	100	100
16	P	86/89 (97%)	85 (99%)	1 (1%)	0	100	100
17	Q	80/82 (98%)	78 (98%)	2 (2%)	0	100	100
18	R	78/84 (93%)	72 (92%)	6 (8%)	0	100	100
19	S	65/75 (87%)	62 (95%)	3 (5%)	0	100	100
20	T	81/92 (88%)	81 (100%)	0	0	100	100
21	U	84/87 (97%)	84 (100%)	0	0	100	100
22	V	68/71 (96%)	67 (98%)	1 (2%)	0	100	100
All	All	2554/3095 (82%)	2463 (96%)	89 (4%)	2 (0%)	50	79

All (2) Ramachandran outliers are listed below:

Mol	Chain	Res	Type
4	D	80	LYS
13	M	88	LYS

5.3.2 Protein sidechains [i](#)

In the following table, the Percentiles column shows the percent sidechain outliers of the chain as a percentile score with respect to all PDB entries followed by that with respect to all EM entries.

The Analysed column shows the number of residues for which the sidechain conformation was analysed, and the total number of residues.

Mol	Chain	Analysed	Rotameric	Outliers	Percentiles	
2	B	75/461 (16%)	68 (91%)	7 (9%)	7	29
3	C	187/199 (94%)	184 (98%)	3 (2%)	58	76
4	D	172/190 (90%)	170 (99%)	2 (1%)	67	82
5	E	172/173 (99%)	172 (100%)	0	100	100

Continued on next page...

Continued from previous page...

Mol	Chain	Analysed	Rotameric	Outliers	Percentiles	
6	F	119/119 (100%)	117 (98%)	2 (2%)	56	75
7	G	91/112 (81%)	90 (99%)	1 (1%)	70	83
8	H	126/129 (98%)	118 (94%)	8 (6%)	15	42
9	I	104/105 (99%)	103 (99%)	1 (1%)	73	84
10	J	106/107 (99%)	102 (96%)	4 (4%)	28	57
11	K	88/90 (98%)	85 (97%)	3 (3%)	32	60
12	L	90/99 (91%)	90 (100%)	0	100	100
13	M	102/103 (99%)	101 (99%)	1 (1%)	73	84
14	N	93/96 (97%)	90 (97%)	3 (3%)	34	62
15	O	83/84 (99%)	83 (100%)	0	100	100
16	P	76/77 (99%)	74 (97%)	2 (3%)	41	66
17	Q	65/65 (100%)	65 (100%)	0	100	100
18	R	74/78 (95%)	72 (97%)	2 (3%)	40	65
19	S	58/65 (89%)	58 (100%)	0	100	100
20	T	72/79 (91%)	71 (99%)	1 (1%)	62	79
21	U	65/66 (98%)	65 (100%)	0	100	100
22	V	60/61 (98%)	58 (97%)	2 (3%)	33	61
All	All	2078/2558 (81%)	2036 (98%)	42 (2%)	50	72

5 of 42 residues with a non-rotameric sidechain are listed below:

Mol	Chain	Res	Type
11	K	18	ILE
16	P	18	ASP
11	K	36	VAL
14	N	11	ASP
18	R	25	ILE

Sometimes sidechains can be flipped to improve hydrogen bonding and reduce clashes. 5 of 25 such sidechains are listed below:

Mol	Chain	Res	Type
10	J	32	GLN
10	J	110	GLN
21	U	48	GLN
10	J	75	GLN

Continued on next page...

Continued from previous page...

Mol	Chain	Res	Type
12	L	81	ASN

5.3.3 RNA [i](#)

Mol	Chain	Analysed	Backbone Outliers	Pucker Outliers
1	A	1534/1541 (99%)	264 (17%)	5 (0%)
23	W	76/77 (98%)	17 (22%)	1 (1%)
24	X	17/53 (32%)	6 (35%)	1 (5%)
All	All	1627/1671 (97%)	287 (17%)	7 (0%)

5 of 287 RNA backbone outliers are listed below:

Mol	Chain	Res	Type
1	A	4	U
1	A	5	U
1	A	9	G
1	A	22	G
1	A	32	A

5 of 7 RNA pucker outliers are listed below:

Mol	Chain	Res	Type
1	A	1166	G
1	A	1214	C
24	X	11	U
23	W	48	U
1	A	843	U

5.4 Non-standard residues in protein, DNA, RNA chains [i](#)

17 non-standard protein/DNA/RNA residues are modelled in this entry.

In the following table, the Counts columns list the number of bonds (or angles) for which Mogul statistics could be retrieved, the number of bonds (or angles) that are observed in the model and the number of bonds (or angles) that are defined in the Chemical Component Dictionary. The Link column lists molecule types, if any, to which the group is linked. The Z score for a bond length (or angle) is the number of standard deviations the observed value is removed from the expected value. A bond length (or angle) with $|Z| > 2$ is considered an outlier worth inspection. RMSZ is the root-mean-square of all Z scores of the bond lengths (or angles).

Mol	Type	Chain	Res	Link	Bond lengths			Bond angles		
					Counts	RMSZ	# Z > 2	Counts	RMSZ	# Z > 2
1	PSU	A	516	1	18,21,22	1.05	2 (11%)	22,30,33	1.83	5 (22%)
1	MA6	A	1519	1	18,26,27	1.33	3 (16%)	19,38,41	4.18	2 (10%)
1	5MC	A	967	1	18,22,23	4.01	7 (38%)	26,32,35	1.04	2 (7%)
13	D2T	M	89	13	7,9,10	1.05	0	6,11,13	2.36	2 (33%)
23	H2U	W	21	23	18,21,22	3.00	5 (27%)	21,30,33	1.52	4 (19%)
1	5MC	A	1407	1	18,22,23	4.05	7 (38%)	26,32,35	0.96	1 (3%)
1	2MG	A	1207	1	18,26,27	2.38	7 (38%)	16,38,41	1.48	4 (25%)
1	MA6	A	1518	1	18,26,27	1.28	3 (16%)	19,38,41	3.80	2 (10%)
23	OMC	W	33	23	19,22,23	3.06	8 (42%)	26,31,34	0.77	0
1	2MG	A	966	1	18,26,27	2.34	7 (38%)	16,38,41	1.35	3 (18%)
23	4SU	W	8	23	18,21,22	4.21	8 (44%)	26,30,33	2.21	4 (15%)
1	2MG	A	1516	1	18,26,27	2.32	7 (38%)	16,38,41	1.47	4 (25%)
23	PSU	W	56	23	18,21,22	1.07	1 (5%)	22,30,33	1.73	4 (18%)
1	UR3	A	1498	1	19,22,23	2.74	7 (36%)	26,32,35	1.26	1 (3%)
1	G7M	A	527	1	20,26,27	2.47	7 (35%)	17,39,42	1.15	2 (11%)
1	4OC	A	1402	1	20,23,24	3.50	9 (45%)	26,32,35	0.86	0
23	5MU	W	55	23	19,22,23	1.40	5 (26%)	28,32,35	2.01	6 (21%)

In the following table, the Chirals column lists the number of chiral outliers, the number of chiral centers analysed, the number of these observed in the model and the number defined in the Chemical Component Dictionary. Similar counts are reported in the Torsion and Rings columns. '-' means no outliers of that kind were identified.

Mol	Type	Chain	Res	Link	Chirals	Torsions	Rings
1	PSU	A	516	1	-	0/7/25/26	0/2/2/2
1	MA6	A	1519	1	-	7/7/29/30	0/3/3/3
1	5MC	A	967	1	-	1/7/25/26	0/2/2/2
13	D2T	M	89	13	-	1/7/12/14	-
23	H2U	W	21	23	-	5/7/38/39	0/2/2/2
1	5MC	A	1407	1	-	0/7/25/26	0/2/2/2
1	2MG	A	1207	1	-	0/5/27/28	0/3/3/3
1	MA6	A	1518	1	-	3/7/29/30	0/3/3/3
23	OMC	W	33	23	-	1/9/27/28	0/2/2/2
1	2MG	A	966	1	-	2/5/27/28	0/3/3/3
23	4SU	W	8	23	-	0/7/25/26	0/2/2/2
1	2MG	A	1516	1	-	1/5/27/28	0/3/3/3
23	PSU	W	56	23	-	0/7/25/26	0/2/2/2
1	UR3	A	1498	1	-	0/7/25/26	0/2/2/2

Continued on next page...

Continued from previous page...

Mol	Type	Chain	Res	Link	Chirals	Torsions	Rings
1	G7M	A	527	1	-	3/3/25/26	0/3/3/3
1	4OC	A	1402	1	-	0/9/29/30	0/2/2/2
23	5MU	W	55	23	-	0/7/25/26	0/2/2/2

The worst 5 of 93 bond length outliers are listed below:

Mol	Chain	Res	Type	Atoms	Z	Observed(Å)	Ideal(Å)
1	A	1407	5MC	C6-C5	10.11	1.51	1.34
1	A	967	5MC	C6-C5	10.03	1.51	1.34
23	W	8	4SU	C4-N3	9.56	1.47	1.37
23	W	21	H2U	C2-N1	8.93	1.48	1.35
23	W	8	4SU	C2-N1	7.93	1.51	1.38

The worst 5 of 46 bond angle outliers are listed below:

Mol	Chain	Res	Type	Atoms	Z	Observed(°)	Ideal(°)
1	A	1519	MA6	N1-C6-N6	-17.14	99.02	117.06
1	A	1518	MA6	N1-C6-N6	-15.24	101.02	117.06
23	W	8	4SU	C4-N3-C2	-7.77	119.79	127.34
1	A	1518	MA6	N3-C2-N1	-5.93	119.41	128.68
23	W	8	4SU	C5-C4-N3	5.56	119.85	114.69

There are no chirality outliers.

5 of 24 torsion outliers are listed below:

Mol	Chain	Res	Type	Atoms
1	A	1518	MA6	C5-C6-N6-C9
1	A	1518	MA6	C5-C6-N6-C10
1	A	1519	MA6	O4'-C4'-C5'-O5'
1	A	1519	MA6	C3'-C4'-C5'-O5'
1	A	1519	MA6	C5-C6-N6-C10

There are no ring outliers.

9 monomers are involved in 13 short contacts:

Mol	Chain	Res	Type	Clashes	Symm-Clashes
1	A	1519	MA6	3	0
13	M	89	D2T	1	0
1	A	1207	2MG	2	0
1	A	1518	MA6	4	0
23	W	33	OMC	2	0

Continued on next page...

Continued from previous page...

Mol	Chain	Res	Type	Clashes	Symm-Clashes
1	A	966	2MG	1	0
1	A	1516	2MG	1	0
1	A	527	G7M	1	0
1	A	1402	4OC	1	0

5.5 Carbohydrates [i](#)

There are no oligosaccharides in this entry.

5.6 Ligand geometry [i](#)

Of 125 ligands modelled in this entry, 125 are monoatomic - leaving 0 for Mogul analysis.

There are no bond length outliers.

There are no bond angle outliers.

There are no chirality outliers.

There are no torsion outliers.

There are no ring outliers.

No monomer is involved in short contacts.

5.7 Other polymers [i](#)

There are no such residues in this entry.

5.8 Polymer linkage issues [i](#)

There are no chain breaks in this entry.

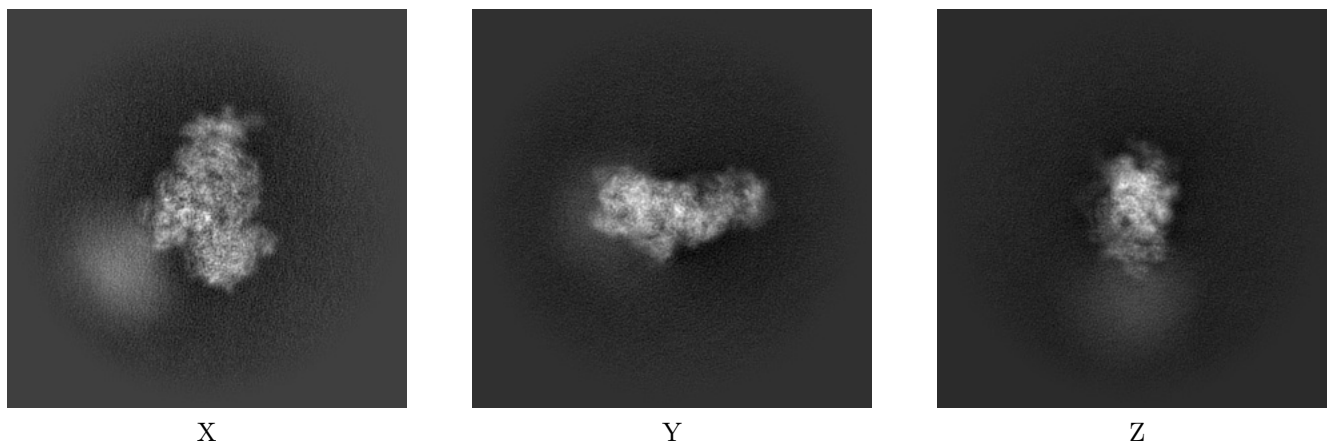
6 Map visualisation [i](#)

This section contains visualisations of the EMDB entry EMD-51618. These allow visual inspection of the internal detail of the map and identification of artifacts.

No raw map or half-maps were deposited for this entry and therefore no images, graphs, etc. pertaining to the raw map can be shown.

6.1 Orthogonal projections [i](#)

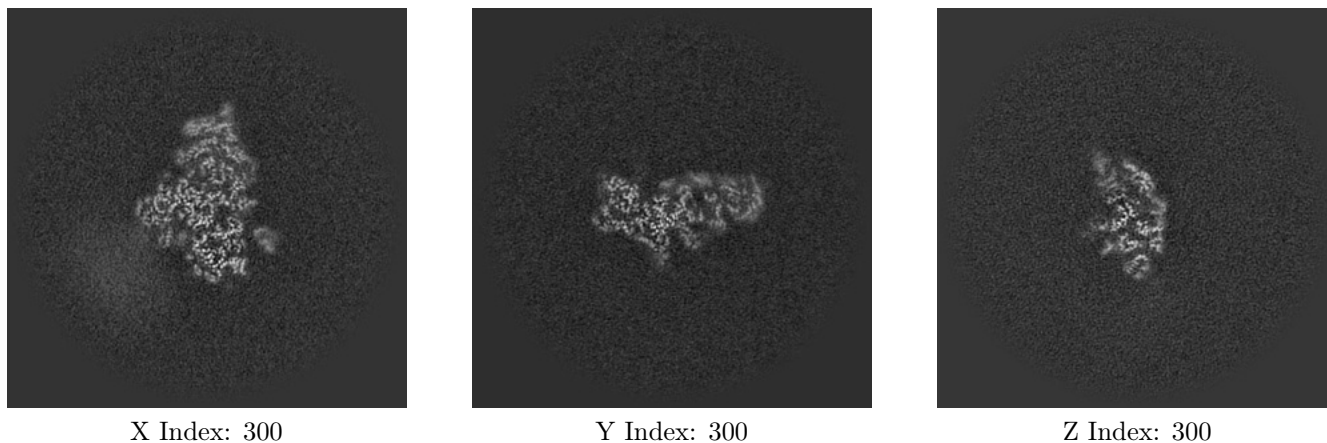
6.1.1 Primary map



The images above show the map projected in three orthogonal directions.

6.2 Central slices [i](#)

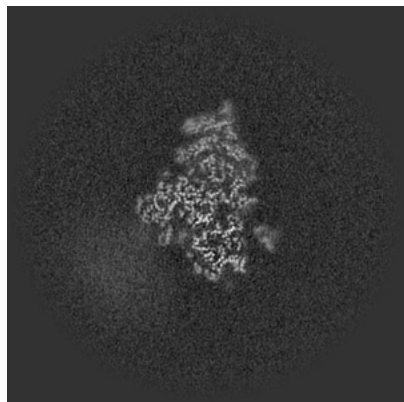
6.2.1 Primary map



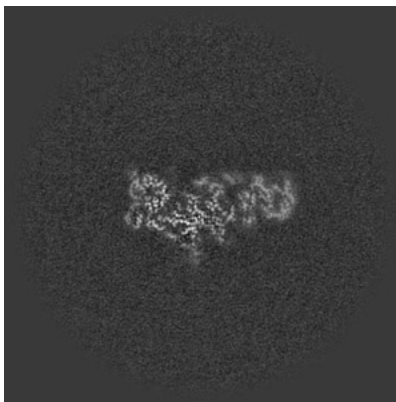
The images above show central slices of the map in three orthogonal directions.

6.3 Largest variance slices [i](#)

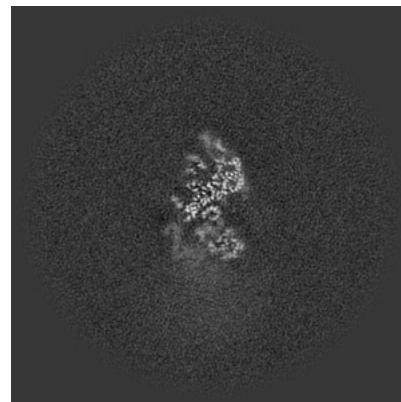
6.3.1 Primary map



X Index: 299



Y Index: 303

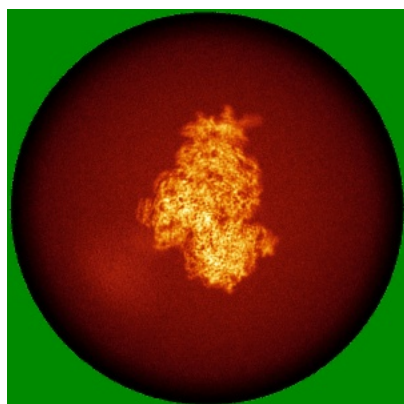


Z Index: 256

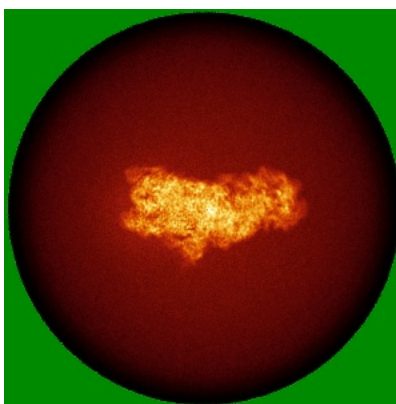
The images above show the largest variance slices of the map in three orthogonal directions.

6.4 Orthogonal standard-deviation projections (False-color) [i](#)

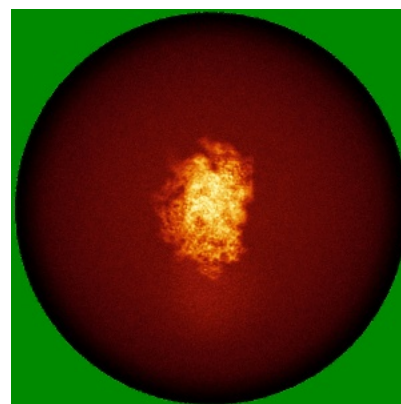
6.4.1 Primary map



X



Y

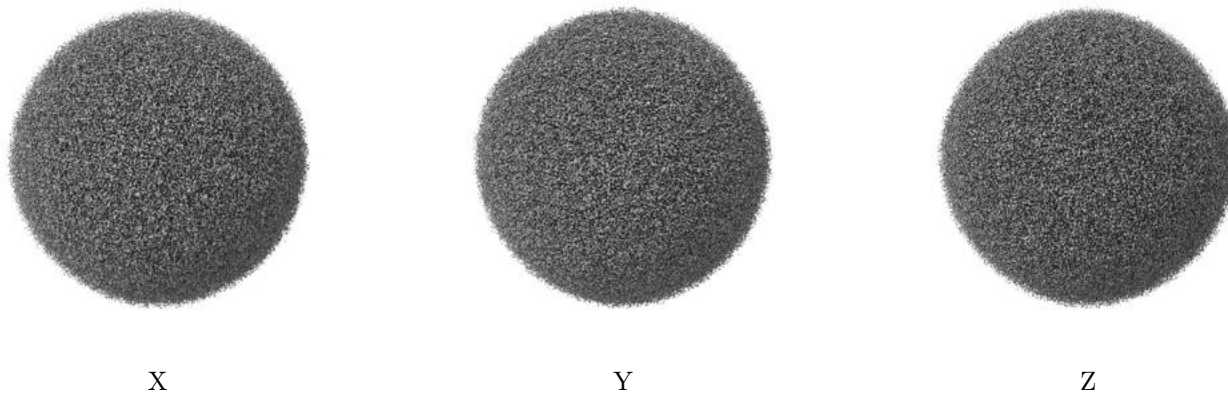


Z

The images above show the map standard deviation projections with false color in three orthogonal directions. Minimum values are shown in green, max in blue, and dark to light orange shades represent small to large values respectively.

6.5 Orthogonal surface views [i](#)

6.5.1 Primary map



The images above show the 3D surface view of the map at the recommended contour level 0.159. These images, in conjunction with the slice images, may facilitate assessment of whether an appropriate contour level has been provided.

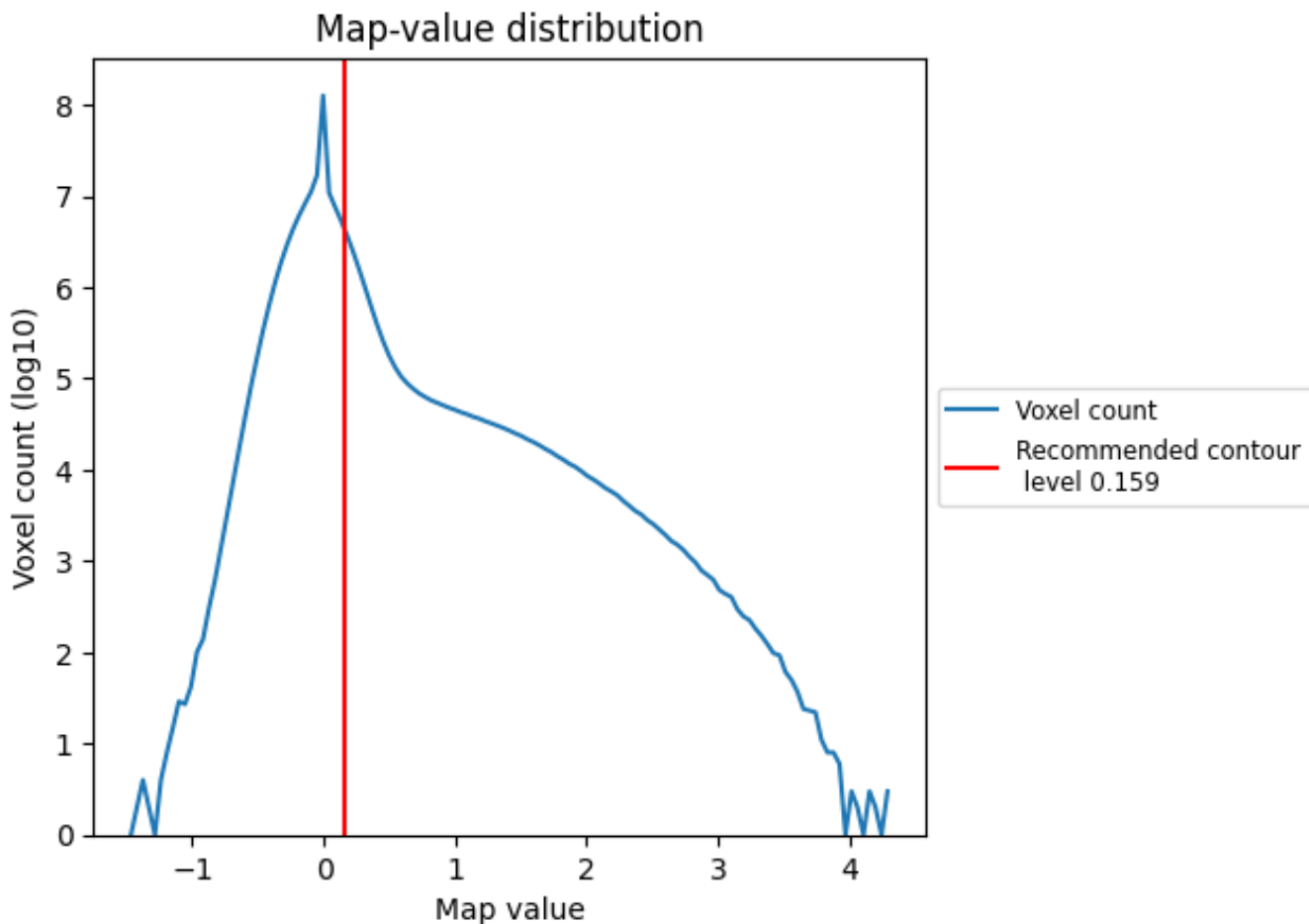
6.6 Mask visualisation [i](#)

This section was not generated. No masks/segmentation were deposited.

7 Map analysis [i](#)

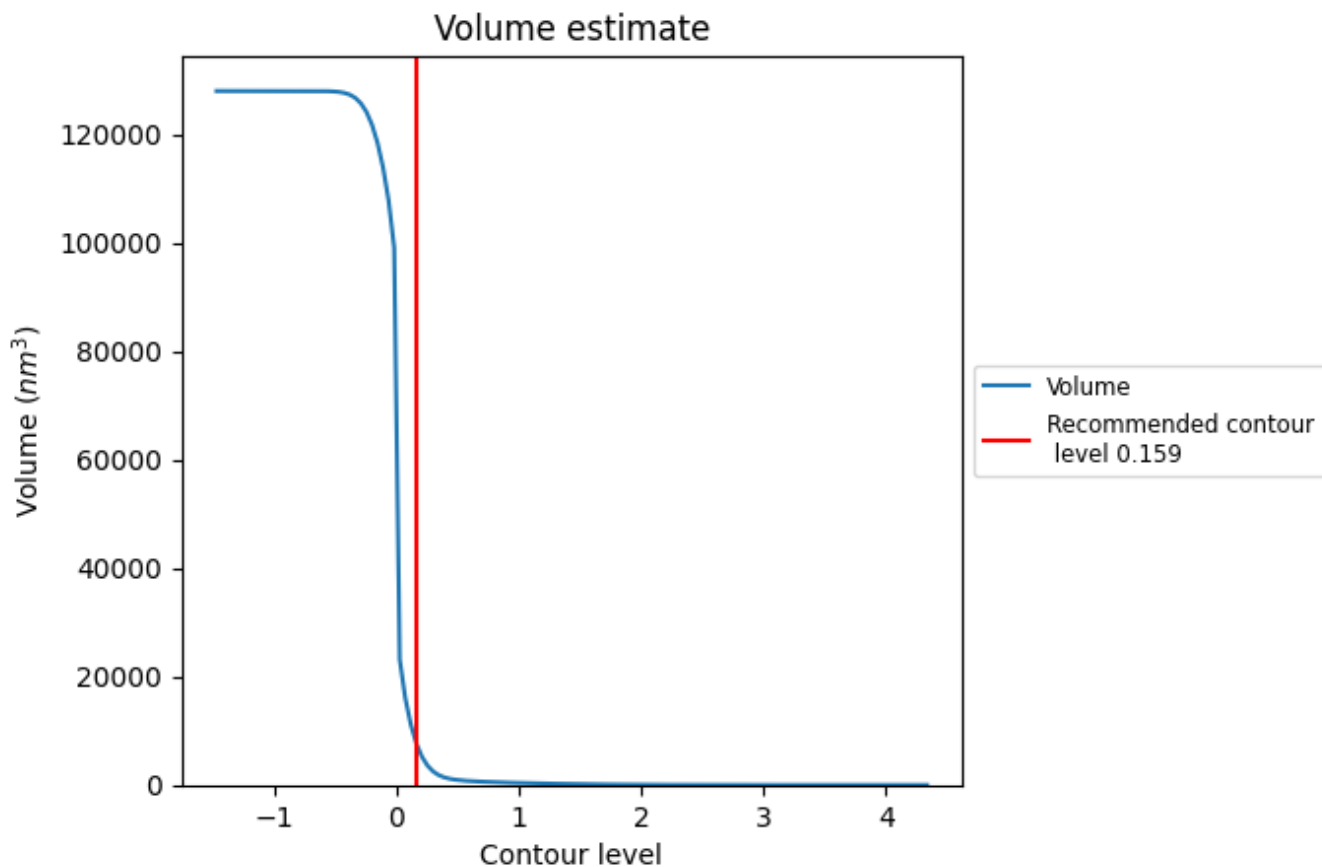
This section contains the results of statistical analysis of the map.

7.1 Map-value distribution [i](#)



The map-value distribution is plotted in 128 intervals along the x-axis. The y-axis is logarithmic. A spike in this graph at zero usually indicates that the volume has been masked.

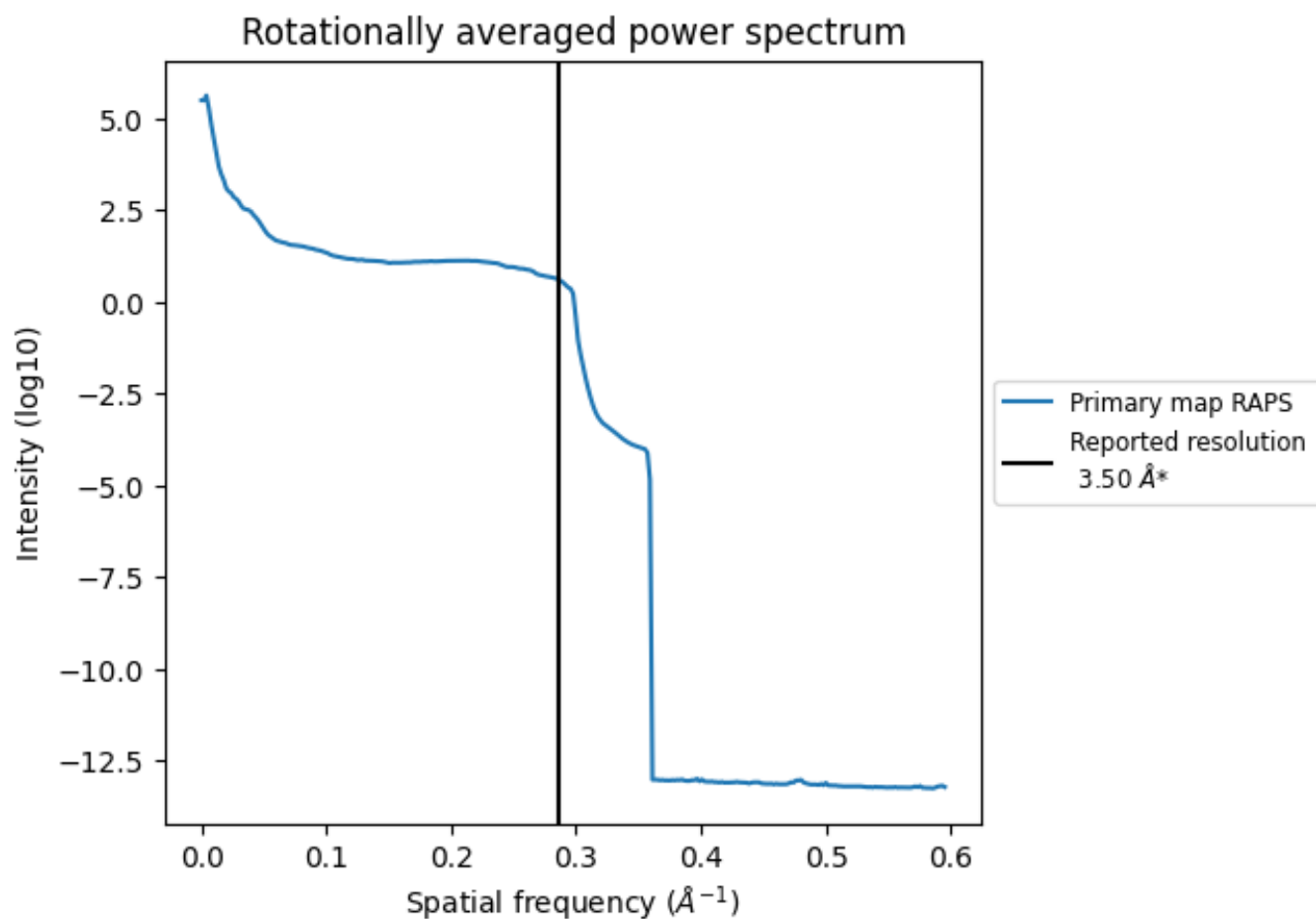
7.2 Volume estimate [i](#)



The volume at the recommended contour level is 8075 nm^3 ; this corresponds to an approximate mass of 7295 kDa.

The volume estimate graph shows how the enclosed volume varies with the contour level. The recommended contour level is shown as a vertical line and the intersection between the line and the curve gives the volume of the enclosed surface at the given level.

7.3 Rotationally averaged power spectrum [\(i\)](#)



*Reported resolution corresponds to spatial frequency of 0.286 Å⁻¹

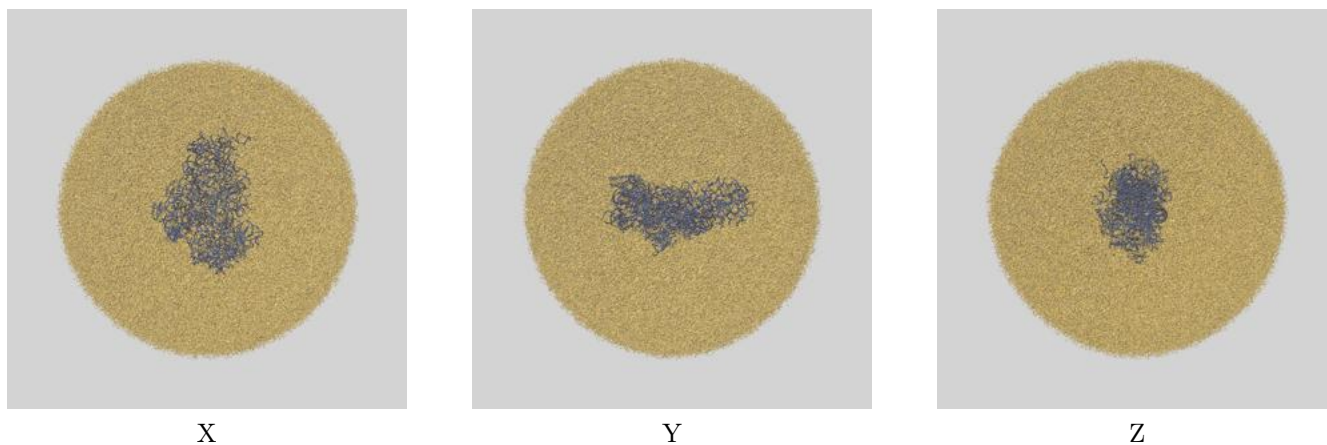
8 Fourier-Shell correlation

This section was not generated. No FSC curve or half-maps provided.

9 Map-model fit [i](#)

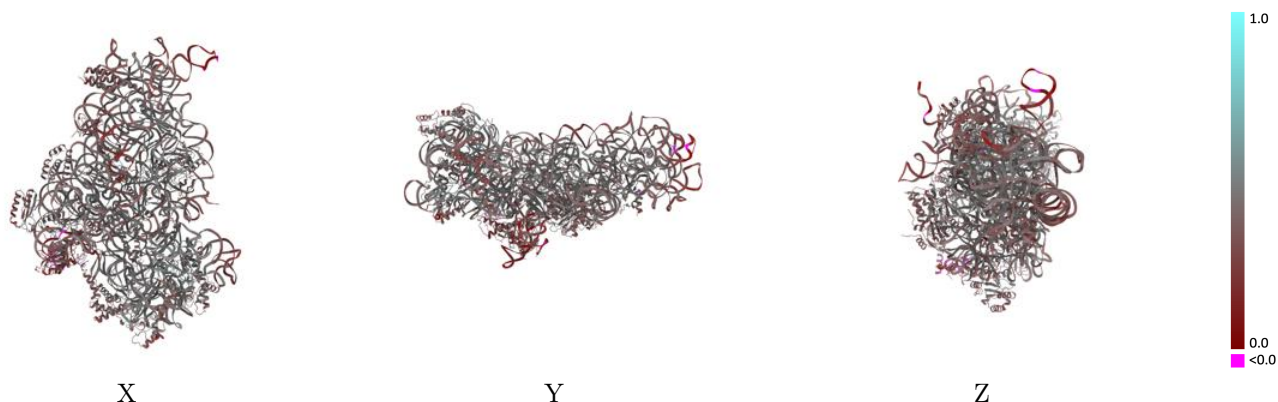
This section contains information regarding the fit between EMDB map EMD-51618 and PDB model 9GUS. Per-residue inclusion information can be found in section 3 on page 8.

9.1 Map-model overlay [i](#)



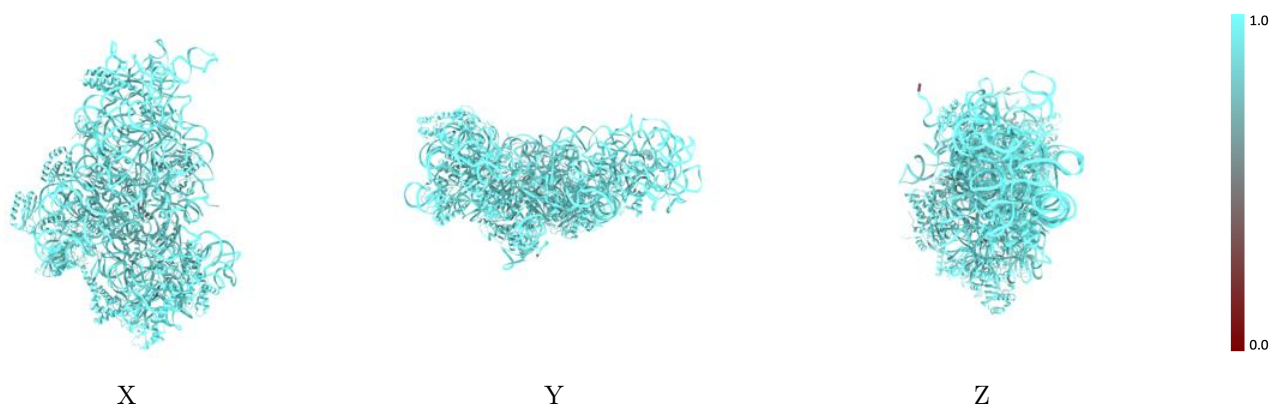
The images above show the 3D surface view of the map at the recommended contour level 0.159 at 50% transparency in yellow overlaid with a ribbon representation of the model coloured in blue. These images allow for the visual assessment of the quality of fit between the atomic model and the map.

9.2 Q-score mapped to coordinate model [i](#)



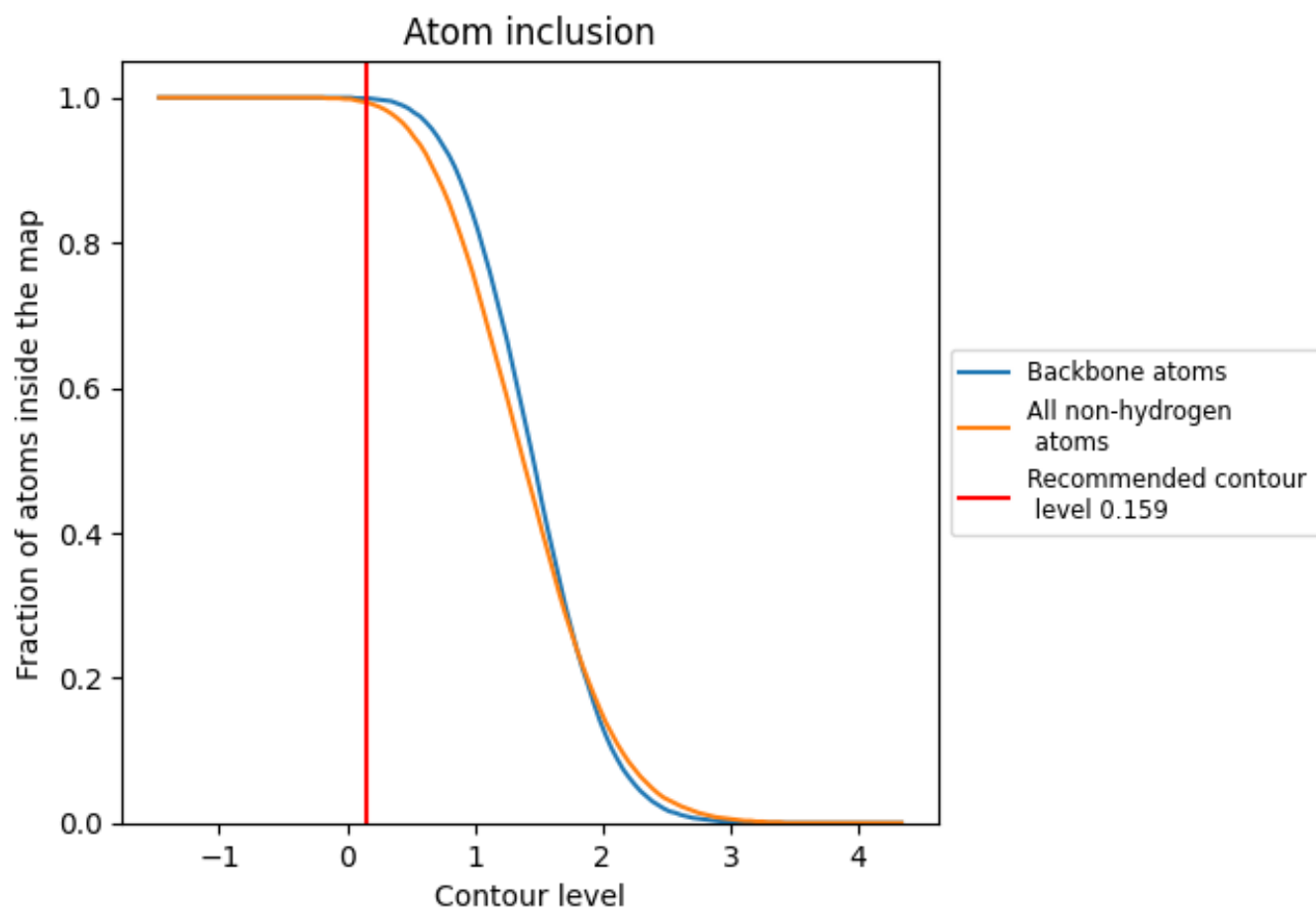
The images above show the model with each residue coloured according to its Q-score. This shows their resolvability in the map with higher Q-score values reflecting better resolvability. Please note: Q-score is calculating the resolvability of atoms, and thus high values are only expected at resolutions at which atoms can be resolved. Low Q-score values may therefore be expected for many entries.

9.3 Atom inclusion mapped to coordinate model [i](#)



The images above show the model with each residue coloured according to its atom inclusion. This shows to what extent they are inside the map at the recommended contour level (0.159).

























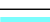



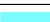





















9.4 Atom inclusion [i](#)



At the recommended contour level, 100% of all backbone atoms, 99% of all non-hydrogen atoms, are inside the map.

9.5 Map-model fit summary

The table lists the average atom inclusion at the recommended contour level (0.159) and Q-score for the entire model and for each chain.

Chain	Atom inclusion	Q-score
All	 0.9930	 0.4010
A	 1.0000	 0.4180
B	 0.9910	 0.2370
C	 0.9700	 0.3570
D	 0.9810	 0.4440
E	 0.9820	 0.3900
F	 0.9740	 0.4310
G	 0.9880	 0.3690
H	 0.9740	 0.3740
I	 0.9820	 0.4180
J	 0.9910	 0.4390
K	 0.9830	 0.4150
L	 0.9790	 0.3320
M	 0.9940	 0.4400
N	 0.9950	 0.3980
O	 0.9920	 0.4500
P	 0.9900	 0.3840
Q	 0.9890	 0.4350
R	 0.9920	 0.3850
S	 0.9790	 0.3810
T	 0.9920	 0.4480
U	 0.9910	 0.3810
V	 0.9660	 0.3260
W	 0.9820	 0.2320
X	 0.9790	 0.1360

