



Full wwPDB X-ray Structure Validation Report ⓘ

Aug 23, 2018 – 07:50 AM EDT

PDB ID : 6GVP
Title : TAILSPIKE PROTEIN MUTANT E372Q (DELTA N471/S472) OF E. COLI BACTERIOPHAGE HK620 IN COMPLEX WITH HEXASACCHARIDE
Authors : Roske, Y.; Gohlke, U.
Deposited on : 2018-06-21
Resolution : 1.71 Å(reported)

This is a Full wwPDB X-ray Structure Validation Report for a publicly released PDB entry.

We welcome your comments at validation@mail.wwpdb.org

A user guide is available at

<https://www.wwpdb.org/validation/2017/XrayValidationReportHelp>

with specific help available everywhere you see the ⓘ symbol.

The following versions of software and data (see [references ⓘ](#)) were used in the production of this report:

MolProbity : 4.02b-467
Mogul : 1.7.3 (157068), CSD as539be (2018)
Xtriage (Phenix) : 1.13
EDS : rb-20031172
Percentile statistics : 20171227.v01 (using entries in the PDB archive December 27th 2017)
Refmac : 5.8.0158
CCP4 : 7.0 (Gargrove)
Ideal geometry (proteins) : Engh & Huber (2001)
Ideal geometry (DNA, RNA) : Parkinson et al. (1996)
Validation Pipeline (wwPDB-VP) : rb-20031172

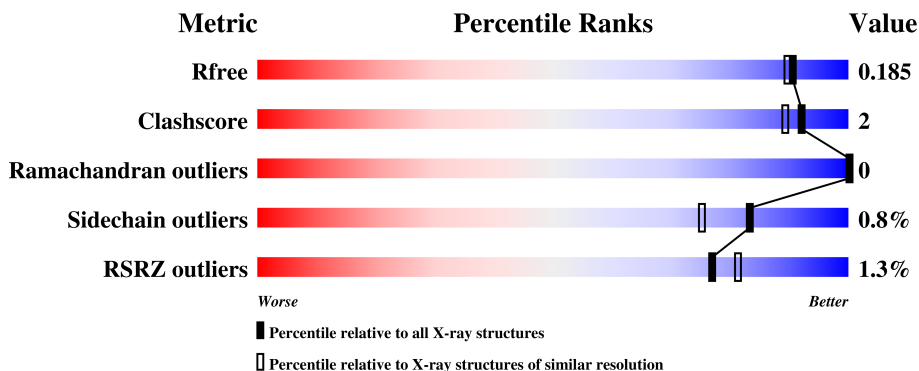
1 Overall quality at a glance

The following experimental techniques were used to determine the structure:

X-RAY DIFFRACTION

The reported resolution of this entry is 1.71 Å.

Percentile scores (ranging between 0-100) for global validation metrics of the entry are shown in the following graphic. The table shows the number of entries on which the scores are based.



Metric	Whole archive (#Entries)	Similar resolution (#Entries, resolution range(Å))
R_{free}	111664	4894 (1.74-1.70)
Clashscore	122126	5296 (1.74-1.70)
Ramachandran outliers	120053	5219 (1.74-1.70)
Sidechain outliers	120020	5219 (1.74-1.70)
RSRZ outliers	108989	4804 (1.74-1.70)

The table below summarises the geometric issues observed across the polymeric chains and their fit to the electron density. The red, orange, yellow and green segments on the lower bar indicate the fraction of residues that contain outliers for ≥ 3 , 2, 1 and 0 types of geometric quality criteria. A grey segment represents the fraction of residues that are not modelled. The numeric value for each fraction is indicated below the corresponding segment, with a dot representing fractions $\leq 5\%$. The upper red bar (where present) indicates the fraction of residues that have poor fit to the electron density. The numeric value is given above the bar.

Mol	Chain	Length	Quality of chain
1	A	598	 % 94% 5%

2 Entry composition [i](#)

There are 10 unique types of molecules in this entry. The entry contains 5447 atoms, of which 0 are hydrogens and 0 are deuteriums.

In the tables below, the ZeroOcc column contains the number of atoms modelled with zero occupancy, the AltConf column contains the number of residues with at least one atom in alternate conformation and the Trace column contains the number of residues modelled with at most 2 atoms.

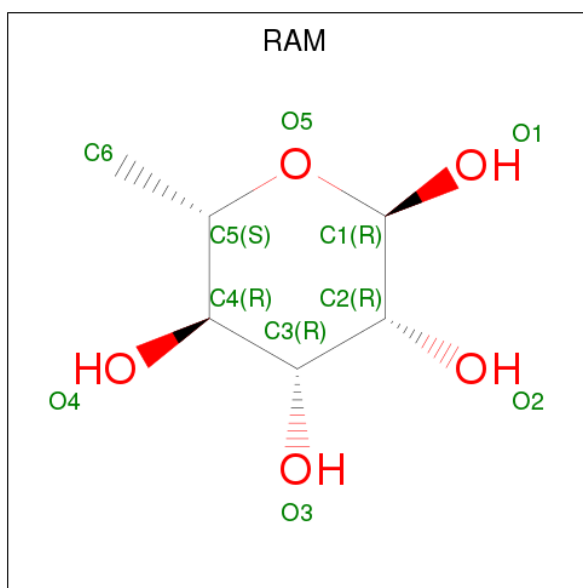
- Molecule 1 is a protein called Tail spike protein.

Mol	Chain	Residues	Atoms					ZeroOcc	AltConf	Trace
			Total	C	N	O	S			
1	A	594	4636	2899	801	912	24	0	16	0

There are 3 discrepancies between the modelled and reference sequences:

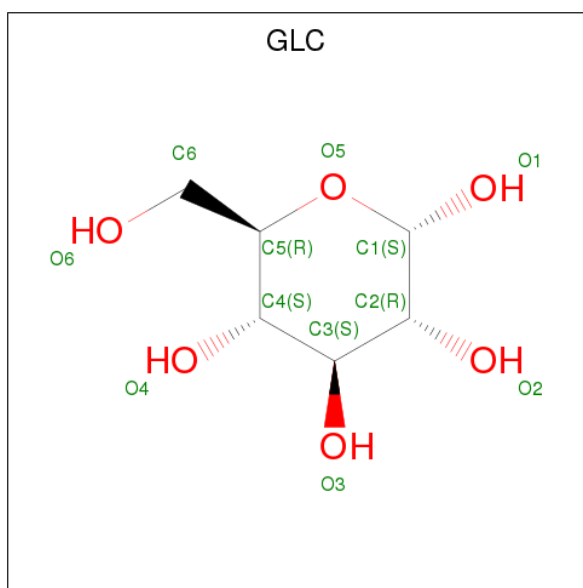
Chain	Residue	Modelled	Actual	Comment	Reference
A	372	GLN	GLU	engineered mutation	UNP Q9AYY6
A	?	-	ASN	deletion	UNP Q9AYY6
A	?	-	SER	deletion	UNP Q9AYY6

- Molecule 2 is ALPHA-L-RHAMNOSE (three-letter code: RAM) (formula: C₆H₁₂O₅).



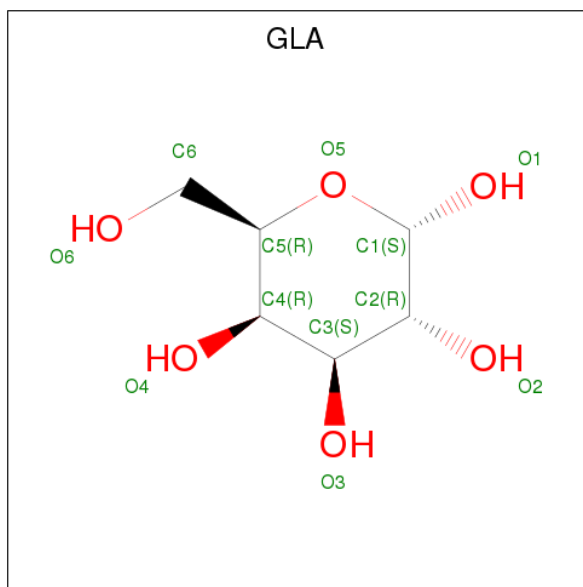
Mol	Chain	Residues	Atoms			ZeroOcc	AltConf
			Total	C	O		
2	A	1	10	6	4	0	0

- Molecule 3 is ALPHA-D-GLUCOSE (three-letter code: GLC) (formula: $C_6H_{12}O_6$).



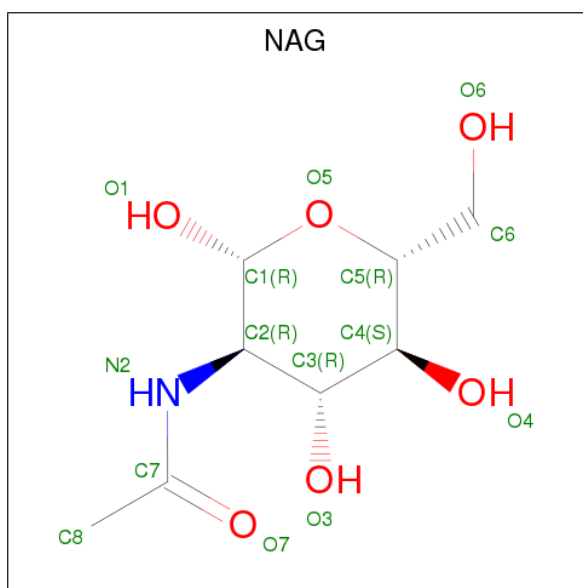
Mol	Chain	Residues	Atoms			ZeroOcc	AltConf
3	A	1	Total	C	O	0	0
			11	6	5		
3	A	1	Total	C	O	0	0
			11	6	5		

- Molecule 4 is ALPHA D-GALACTOSE (three-letter code: GLA) (formula: $C_6H_{12}O_6$).



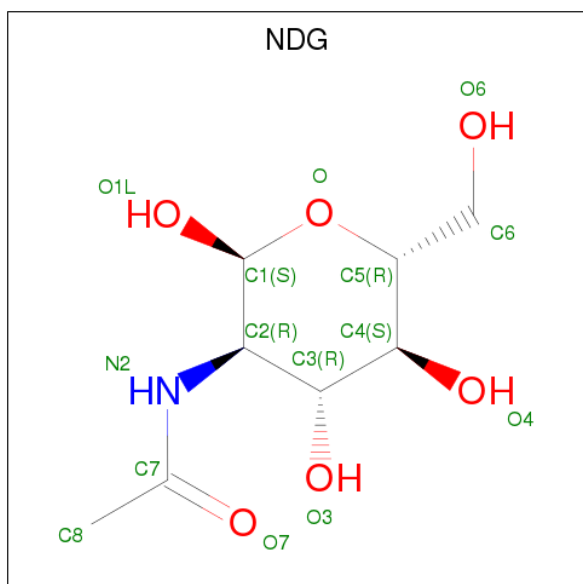
Mol	Chain	Residues	Atoms			ZeroOcc	AltConf
4	A	1	Total	C	O	0	0
			11	6	5		

- Molecule 5 is N-ACETYL-D-GLUCOSAMINE (three-letter code: NAG) (formula: $C_8H_{15}NO_6$).



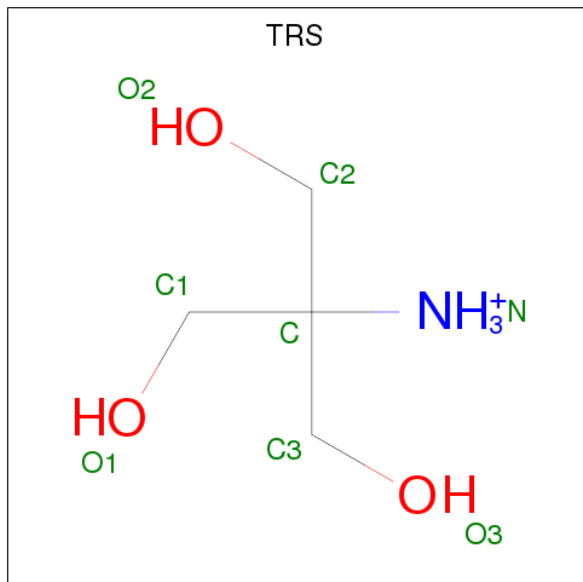
Mol	Chain	Residues	Atoms				ZeroOcc	AltConf
			Total	C	N	O		
5	A	1	14	8	1	5	0	0

- Molecule 6 is 2-(ACETYLAMINO)-2-DEOXY-A-D-GLUCOPYRANOSE (three-letter code: NDG) (formula: $C_8H_{15}NO_6$).



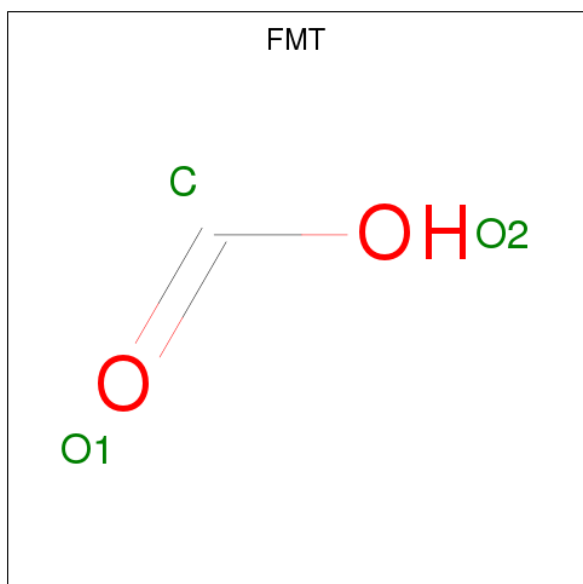
Mol	Chain	Residues	Atoms				ZeroOcc	AltConf
			Total	C	N	O		
6	A	1	15	8	1	6	0	0

- Molecule 7 is 2-AMINO-2-HYDROXYMETHYL-PROPANE-1,3-DIOL (three-letter code: TRS) (formula: $C_4H_{12}NO_3$).



Mol	Chain	Residues	Atoms				ZeroOcc	AltConf
			Total	C	N	O		
7	A	1	8	4	1	3	0	0

- Molecule 8 is FORMIC ACID (three-letter code: FMT) (formula: CH_2O_2).



Mol	Chain	Residues	Atoms			ZeroOcc	AltConf
			Total	C	O		
8	A	1	3	1	2	0	0

Continued on next page...

Continued from previous page...

Mol	Chain	Residues	Atoms			ZeroOcc	AltConf
8	A	1	Total	C	O	0	0
			3	1	2		
8	A	1	Total	C	O	0	0
			3	1	2		

- Molecule 9 is SODIUM ION (three-letter code: NA) (formula: Na).

Mol	Chain	Residues	Atoms		ZeroOcc	AltConf
9	A	3	Total	Na	0	0
			3	3		

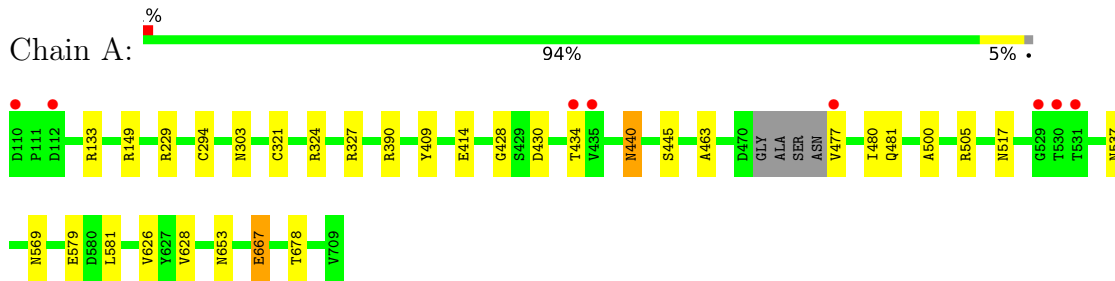
- Molecule 10 is water.

Mol	Chain	Residues	Atoms		ZeroOcc	AltConf
10	A	719	Total	O	0	0
			719	719		

3 Residue-property plots [i](#)

These plots are drawn for all protein, RNA and DNA chains in the entry. The first graphic for a chain summarises the proportions of the various outlier classes displayed in the second graphic. The second graphic shows the sequence view annotated by issues in geometry and electron density. Residues are color-coded according to the number of geometric quality criteria for which they contain at least one outlier: green = 0, yellow = 1, orange = 2 and red = 3 or more. A red dot above a residue indicates a poor fit to the electron density ($RSRZ > 2$). Stretches of 2 or more consecutive residues without any outlier are shown as a green connector. Residues present in the sample, but not in the model, are shown in grey.

- Molecule 1: Tail spike protein



4 Data and refinement statistics

Property	Value	Source
Space group	P 3 2 1	Depositor
Cell constants a, b, c, α , β , γ	74.12Å 74.12Å 175.12Å 90.00° 90.00° 120.00°	Depositor
Resolution (Å)	43.78 – 1.71 43.78 – 1.71	Depositor EDS
% Data completeness (in resolution range)	99.9 (43.78-1.71) 99.9 (43.78-1.71)	Depositor EDS
R_{merge}	(Not available)	Depositor
R_{sym}	(Not available)	Depositor
$\langle I/\sigma(I) \rangle$ ¹	2.90 (at 1.71Å)	Xtrriage
Refinement program	REFMAC 5.8.0189	Depositor
R, R_{free}	0.136 , 0.174 0.150 , 0.185	Depositor DCC
R_{free} test set	3057 reflections (5.00%)	wwPDB-VP
Wilson B-factor (Å ²)	14.0	Xtrriage
Anisotropy	0.542	Xtrriage
Bulk solvent k_{sol} (e/Å ³), B_{sol} (Å ²)	0.37 , 46.6	EDS
L-test for twinning ²	$\langle L \rangle = 0.46$, $\langle L^2 \rangle = 0.29$	Xtrriage
Estimated twinning fraction	0.043 for -h,-k,l	Xtrriage
F_o, F_c correlation	0.97	EDS
Total number of atoms	5447	wwPDB-VP
Average B, all atoms (Å ²)	18.0	wwPDB-VP

Xtrriage's analysis on translational NCS is as follows: *The largest off-origin peak in the Patterson function is 3.96% of the height of the origin peak. No significant pseudotranslation is detected.*

¹Intensities estimated from amplitudes.

²Theoretical values of $\langle |L| \rangle$, $\langle L^2 \rangle$ for acentric reflections are 0.5, 0.333 respectively for untwinned datasets, and 0.375, 0.2 for perfectly twinned datasets.

5 Model quality [i](#)

5.1 Standard geometry [i](#)

Bond lengths and bond angles in the following residue types are not validated in this section: RAM, NAG, GLA, FMT, GLC, NDG, NA, TRS

The Z score for a bond length (or angle) is the number of standard deviations the observed value is removed from the expected value. A bond length (or angle) with $|Z| > 5$ is considered an outlier worth inspection. RMSZ is the root-mean-square of all Z scores of the bond lengths (or angles).

Mol	Chain	Bond lengths		Bond angles	
		RMSZ	# Z >5	RMSZ	# Z >5
1	A	0.93	1/4743 (0.0%)	0.94	8/6461 (0.1%)

All (1) bond length outliers are listed below:

Mol	Chain	Res	Type	Atoms	Z	Observed(Å)	Ideal(Å)
1	A	667	GLU	CD-OE2	6.75	1.33	1.25

All (8) bond angle outliers are listed below:

Mol	Chain	Res	Type	Atoms	Z	Observed(°)	Ideal(°)
1	A	390	ARG	NE-CZ-NH1	8.28	124.44	120.30
1	A	229	ARG	NE-CZ-NH1	8.25	124.42	120.30
1	A	229	ARG	NE-CZ-NH2	-7.25	116.67	120.30
1	A	324	ARG	NE-CZ-NH2	-6.08	117.26	120.30
1	A	430	ASP	CB-CG-OD1	6.08	123.77	118.30
1	A	505	ARG	NE-CZ-NH1	5.92	123.26	120.30
1	A	327	ARG	NE-CZ-NH2	-5.66	117.47	120.30
1	A	133	ARG	NE-CZ-NH1	5.35	122.97	120.30

There are no chirality outliers.

There are no planarity outliers.

5.2 Too-close contacts [i](#)

In the following table, the Non-H and H(model) columns list the number of non-hydrogen atoms and hydrogen atoms in the chain respectively. The H(added) column lists the number of hydrogen atoms added and optimized by MolProbity. The Clashes column lists the number of clashes within the asymmetric unit, whereas Symm-Clashes lists symmetry related clashes.

Mol	Chain	Non-H	H(model)	H(added)	Clashes	Symm-Clashes
1	A	4636	0	4353	16	0
2	A	10	0	8	0	0
3	A	22	0	19	0	0
4	A	11	0	8	0	0
5	A	14	0	13	0	0
6	A	15	0	13	0	0
7	A	8	0	12	0	0
8	A	9	0	3	0	0
9	A	3	0	0	0	0
10	A	719	0	0	5	4
All	All	5447	0	4429	16	4

The all-atom clashscore is defined as the number of clashes found per 1000 atoms (including hydrogen atoms). The all-atom clashscore for this structure is 2.

All (16) close contacts within the same asymmetric unit are listed below, sorted by their clash magnitude.

Atom-1	Atom-2	Interatomic distance (Å)	Clash overlap (Å)
1:A:303[B]:ASN:OD1	10:A:1101:HOH:O	1.75	1.05
1:A:678[B]:THR:OG1	10:A:1102:HOH:O	2.07	0.59
1:A:626:VAL:HG12	1:A:628[A]:VAL:HG23	1.85	0.58
1:A:626:VAL:HG12	1:A:628[A]:VAL:CG2	2.34	0.57
1:A:409:TYR:HA	1:A:440:ASN:O	2.04	0.57
1:A:667:GLU:HG2	10:A:1336:HOH:O	2.05	0.56
1:A:414[B]:GLU:HG2	1:A:414[B]:GLU:O	2.06	0.56
1:A:414[A]:GLU:HG2	1:A:445[A]:SER:OG	2.07	0.53
1:A:653[B]:ASN:ND2	10:A:1112:HOH:O	2.43	0.51
1:A:579:GLU:HG2	1:A:581:LEU:HG	1.98	0.45
1:A:463:ALA:HA	1:A:500:ALA:O	2.16	0.45
1:A:440:ASN:HA	1:A:481:GLN:O	2.17	0.44
1:A:477:VAL:N	10:A:1120:HOH:O	2.51	0.43
1:A:294:CYS:O	1:A:321:CYS:HA	2.20	0.41
1:A:537:ASN:HA	1:A:569:ASN:O	2.19	0.41
1:A:428:GLY:HA2	1:A:480:ILE:HD11	2.04	0.40

All (4) symmetry-related close contacts are listed below. The label for Atom-2 includes the symmetry operator and encoded unit-cell translations to be applied.

Atom-1	Atom-2	Interatomic distance (Å)	Clash overlap (Å)
10:A:1192:HOH:O	10:A:1192:HOH:O[2_655]	1.80	0.40
10:A:1375:HOH:O	10:A:1664:HOH:O[2_655]	2.01	0.19

Continued on next page...

Continued from previous page...

Atom-1	Atom-2	Interatomic distance (Å)	Clash overlap (Å)
10:A:1104:HOH:O	10:A:1569:HOH:O[2_655]	2.04	0.16
10:A:1633:HOH:O	10:A:1748:HOH:O[3_665]	2.18	0.02

5.3 Torsion angles [i](#)

5.3.1 Protein backbone [i](#)

In the following table, the Percentiles column shows the percent Ramachandran outliers of the chain as a percentile score with respect to all X-ray entries followed by that with respect to entries of similar resolution.

The Analysed column shows the number of residues for which the backbone conformation was analysed, and the total number of residues.

Mol	Chain	Analysed	Favoured	Allowed	Outliers	Percentiles
1	A	606/598 (101%)	587 (97%)	19 (3%)	0	100 100

There are no Ramachandran outliers to report.

5.3.2 Protein sidechains [i](#)

In the following table, the Percentiles column shows the percent sidechain outliers of the chain as a percentile score with respect to all X-ray entries followed by that with respect to entries of similar resolution.

The Analysed column shows the number of residues for which the sidechain conformation was analysed, and the total number of residues.

Mol	Chain	Analysed	Rotameric	Outliers	Percentiles
1	A	504/490 (103%)	500 (99%)	4 (1%)	83 75

All (4) residues with a non-rotameric sidechain are listed below:

Mol	Chain	Res	Type
1	A	149	ARG
1	A	434	THR
1	A	440	ASN
1	A	517	ASN

Some sidechains can be flipped to improve hydrogen bonding and reduce clashes. There are no such sidechains identified.

5.3.3 RNA [i](#)

There are no RNA molecules in this entry.

5.4 Non-standard residues in protein, DNA, RNA chains [i](#)

There are no non-standard protein/DNA/RNA residues in this entry.

5.5 Carbohydrates [i](#)

There are no carbohydrates in this entry.

5.6 Ligand geometry [i](#)

Of 13 ligands modelled in this entry, 3 are monoatomic - leaving 10 for Mogul analysis.

In the following table, the Counts columns list the number of bonds (or angles) for which Mogul statistics could be retrieved, the number of bonds (or angles) that are observed in the model and the number of bonds (or angles) that are defined in the Chemical Component Dictionary. The Link column lists molecule types, if any, to which the group is linked. The Z score for a bond length (or angle) is the number of standard deviations the observed value is removed from the expected value. A bond length (or angle) with $|Z| > 2$ is considered an outlier worth inspection. RMSZ is the root-mean-square of all Z scores of the bond lengths (or angles).

Mol	Type	Chain	Res	Link	Bond lengths			Bond angles		
					Counts	RMSZ	# Z > 2	Counts	RMSZ	# Z > 2
2	RAM	A	1001	9,3	9,10,11	1.11	1 (11%)	13,14,16	1.34	2 (15%)
3	GLC	A	1002	2,4	11,11,12	1.05	0	15,15,17	1.75	5 (33%)
4	GLA	A	1003	3,5,6	11,11,12	1.00	0	15,15,17	1.16	1 (6%)
5	NAG	A	1004	4	14,14,15	0.76	0	17,19,21	1.29	2 (11%)
6	NDG	A	1005	3,4	15,15,15	1.37	3 (20%)	21,21,21	1.37	2 (9%)
3	GLC	A	1006	6	11,11,12	1.36	1 (9%)	15,15,17	1.23	3 (20%)
7	TRS	A	1007	-	7,7,7	0.47	0	9,9,9	1.24	1 (11%)
8	FMT	A	1008	-	0,2,2	0.00	-	0,1,1	0.00	-
8	FMT	A	1009	-	0,2,2	0.00	-	0,1,1	0.00	-
8	FMT	A	1010	-	0,2,2	0.00	-	0,1,1	0.00	-

In the following table, the Chirals column lists the number of chiral outliers, the number of chiral centers analysed, the number of these observed in the model and the number defined in the Chemical Component Dictionary. Similar counts are reported in the Torsion and Rings columns. '-' means no outliers of that kind were identified.

Mol	Type	Chain	Res	Link	Chirals	Torsions	Rings
2	RAM	A	1001	9,3	-	0/0/17/20	0/1/1/1
3	GLC	A	1002	2,4	-	0/2/19/22	0/1/1/1
4	GLA	A	1003	3,5,6	-	0/2/19/22	0/1/1/1
5	NAG	A	1004	4	-	0/6/23/26	0/1/1/1
6	NDG	A	1005	3,4	-	0/6/26/26	0/1/1/1
3	GLC	A	1006	6	-	0/2/19/22	0/1/1/1
7	TRS	A	1007	-	-	0/9/9/9	0/0/0/0
8	FMT	A	1008	-	-	0/0/0/0	0/0/0/0
8	FMT	A	1009	-	-	0/0/0/0	0/0/0/0
8	FMT	A	1010	-	-	0/0/0/0	0/0/0/0

All (5) bond length outliers are listed below:

Mol	Chain	Res	Type	Atoms	Z	Observed(Å)	Ideal(Å)
3	A	1006	GLC	O5-C1	-4.06	1.37	1.43
2	A	1001	RAM	O5-C1	-2.68	1.39	1.43
6	A	1005	NDG	O-C5	-2.29	1.38	1.44
6	A	1005	NDG	O3-C3	2.50	1.49	1.43
6	A	1005	NDG	C1-C2	2.86	1.56	1.52

All (16) bond angle outliers are listed below:

Mol	Chain	Res	Type	Atoms	Z	Observed(°)	Ideal(°)
6	A	1005	NDG	C1-C2-N2	-3.39	106.80	110.73
4	A	1003	GLA	O3-C3-C2	-3.31	103.88	110.04
3	A	1002	GLC	O3-C3-C2	-3.04	104.38	110.04
5	A	1004	NAG	O5-C1-C2	-3.01	107.36	111.52
2	A	1001	RAM	O2-C2-C1	-2.89	103.35	109.17
3	A	1002	GLC	O5-C1-C2	-2.54	106.83	110.78
3	A	1002	GLC	O5-C5-C4	-2.50	104.75	110.83
3	A	1006	GLC	C2-C3-C4	-2.21	107.02	110.87
3	A	1006	GLC	O3-C3-C2	-2.09	106.16	110.04
2	A	1001	RAM	O2-C2-C3	2.01	114.11	110.19
5	A	1004	NAG	O3-C3-C4	2.04	115.10	110.34
3	A	1002	GLC	O5-C5-C6	2.43	111.00	107.15
6	A	1005	NDG	C1-O-C5	2.52	118.53	113.69
3	A	1006	GLC	C1-O5-C5	2.53	115.67	112.19
7	A	1007	TRS	C3-C-N	2.69	113.44	107.73
3	A	1002	GLC	C1-O5-C5	3.43	116.91	112.19

There are no chirality outliers.

There are no torsion outliers.

There are no ring outliers.

No monomer is involved in short contacts.

5.7 Other polymers

There are no such residues in this entry.

5.8 Polymer linkage issues

There are no chain breaks in this entry.

6 Fit of model and data [i](#)

6.1 Protein, DNA and RNA chains [i](#)

In the following table, the column labelled ‘#RSRZ> 2’ contains the number (and percentage) of RSRZ outliers, followed by percent RSRZ outliers for the chain as percentile scores relative to all X-ray entries and entries of similar resolution. The OWAB column contains the minimum, median, 95th percentile and maximum values of the occupancy-weighted average B-factor per residue. The column labelled ‘Q< 0.9’ lists the number of (and percentage) of residues with an average occupancy less than 0.9.

Mol	Chain	Analysed	<RSRZ>	#RSRZ>2	OWAB(Å ²)	Q<0.9
1	A	594/598 (99%)	-0.46	8 (1%) 77 81	9, 15, 27, 59	0

All (8) RSRZ outliers are listed below:

Mol	Chain	Res	Type	RSRZ
1	A	529	GLY	4.8
1	A	530	THR	4.0
1	A	434	THR	3.6
1	A	477	VAL	3.1
1	A	112	ASP	2.8
1	A	110	ASP	2.7
1	A	531	THR	2.5
1	A	435	VAL	2.3

6.2 Non-standard residues in protein, DNA, RNA chains [i](#)

There are no non-standard protein/DNA/RNA residues in this entry.

6.3 Carbohydrates [i](#)

There are no carbohydrates in this entry.

6.4 Ligands [i](#)

In the following table, the Atoms column lists the number of modelled atoms in the group and the number defined in the chemical component dictionary. The B-factors column lists the minimum, median, 95th percentile and maximum values of B factors of atoms in the group. The column labelled ‘Q< 0.9’ lists the number of atoms with occupancy less than 0.9.

Mol	Type	Chain	Res	Atoms	RSCC	RSR	B-factors(\AA^2)	Q<0.9
8	FMT	A	1010	3/3	0.80	0.23	34,34,43,43	0
2	RAM	A	1001	10/11	0.94	0.07	17,18,20,22	0
6	NDG	A	1005	15/15	0.95	0.06	14,15,18,19	0
9	NA	A	1013	1/1	0.95	0.07	26,26,26,26	0
3	GLC	A	1002	11/12	0.96	0.07	16,19,20,22	0
5	NAG	A	1004	14/15	0.96	0.06	13,15,30,30	0
7	TRS	A	1007	8/8	0.96	0.08	14,16,18,19	0
4	GLA	A	1003	11/12	0.97	0.05	14,15,18,19	0
3	GLC	A	1006	11/12	0.97	0.06	17,20,22,31	0
9	NA	A	1012	1/1	0.98	0.14	26,26,26,26	0
8	FMT	A	1009	3/3	0.98	0.04	23,23,24,24	0
8	FMT	A	1008	3/3	0.98	0.05	17,17,19,19	0
9	NA	A	1011	1/1	0.99	0.16	20,20,20,20	0

6.5 Other polymers [i](#)

There are no such residues in this entry.