



# Full wwPDB X-ray Structure Validation Report ⓘ

Apr 18, 2024 – 10:19 AM EDT

PDB ID : 7H34  
Title : Group deposition for crystallographic fragment screening of Coxsackievirus A16 (G-10) 2A protease – Crystal structure of Coxsackievirus A16 (G-10) 2A protease in complex with Z1639162606 (A71EV2A-x0305)  
Authors : Lithgo, R.M.; Fairhead, M.; Koekemoer, L.; Balcomb, B.H.; Capkin, E.; Chandran, A.V.; Golding, M.; Godoy, A.S.; Aschenbrenner, J.C.; Marples, P.G.; Ni, X.; Thompson, W.; Tomlinson, C.W.E.; Wild, C.; Winokan, M.; Xavier, M.-A.E.; Fearon, D.; von Delft, F.  
Deposited on : 2024-04-04  
Resolution : 1.39 Å(reported)

This is a Full wwPDB X-ray Structure Validation Report for a publicly released PDB entry.

We welcome your comments at [validation@mail.wwpdb.org](mailto:validation@mail.wwpdb.org)

A user guide is available at

<https://www.wwpdb.org/validation/2017/XrayValidationReportHelp>

with specific help available everywhere you see the ⓘ symbol.

The types of validation reports are described at

<http://www.wwpdb.org/validation/2017/FAQs#types>.

---

The following versions of software and data (see [references ⓘ](#)) were used in the production of this report:

MolProbity : 4.02b-467  
Mogul : 1.8.5 (274361), CSD as541be (2020)  
Xtriage (Phenix) : 1.13  
EDS : 2.36.1  
Percentile statistics : 20191225.v01 (using entries in the PDB archive December 25th 2019)  
Refmac : 5.8.0158  
CCP4 : 7.0.044 (Gargrove)  
Ideal geometry (proteins) : Engh & Huber (2001)

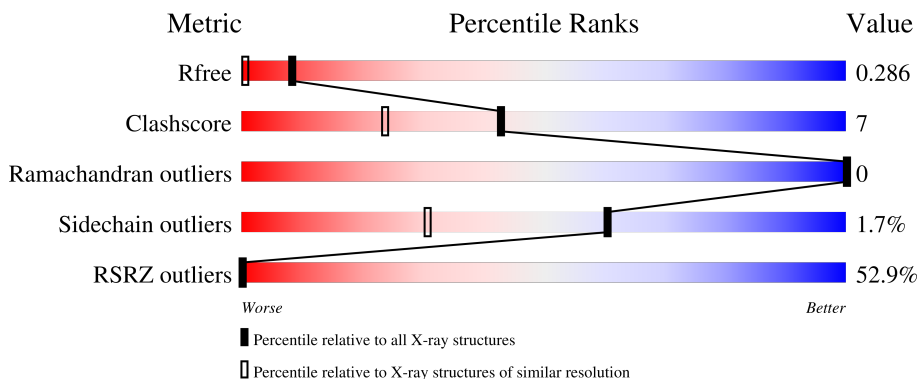
# 1 Overall quality at a glance

The following experimental techniques were used to determine the structure:

*X-RAY DIFFRACTION*

The reported resolution of this entry is 1.39 Å.

Percentile scores (ranging between 0-100) for global validation metrics of the entry are shown in the following graphic. The table shows the number of entries on which the scores are based.



Metric	Whole archive (#Entries)	Similar resolution (#Entries, resolution range(Å))
$R_{free}$	130704	1714 (1.40-1.40)
Clashscore	141614	1812 (1.40-1.40)
Ramachandran outliers	138981	1763 (1.40-1.40)
Sidechain outliers	138945	1762 (1.40-1.40)
RSRZ outliers	127900	1674 (1.40-1.40)

The table below summarises the geometric issues observed across the polymeric chains and their fit to the electron density. The red, orange, yellow and green segments of the lower bar indicate the fraction of residues that contain outliers for  $\geq 3$ , 2, 1 and 0 types of geometric quality criteria respectively. A grey segment represents the fraction of residues that are not modelled. The numeric value for each fraction is indicated below the corresponding segment, with a dot representing fractions  $\leq 5\%$ . The upper red bar (where present) indicates the fraction of residues that have poor fit to the electron density. The numeric value is given above the bar.

Mol	Chain	Length	Quality of chain
1	A	150	

The following table lists non-polymeric compounds, carbohydrate monomers and non-standard residues in protein, DNA, RNA chains that are outliers for geometric or electron-density-fit criteria:

Ideal geometry (DNA, RNA) : Parkinson et al. (1996)  
Validation Pipeline (wwPDB-VP) : 2.36.1

Mol	Type	Chain	Res	Chirality	Geometry	Clashes	Electron density
5	SO4	A	208	-	-	X	X

## 2 Entry composition [i](#)

There are 6 unique types of molecules in this entry. The entry contains 1370 atoms, of which 0 are hydrogens and 0 are deuteriums.

In the tables below, the ZeroOcc column contains the number of atoms modelled with zero occupancy, the AltConf column contains the number of residues with at least one atom in alternate conformation and the Trace column contains the number of residues modelled with at most 2 atoms.

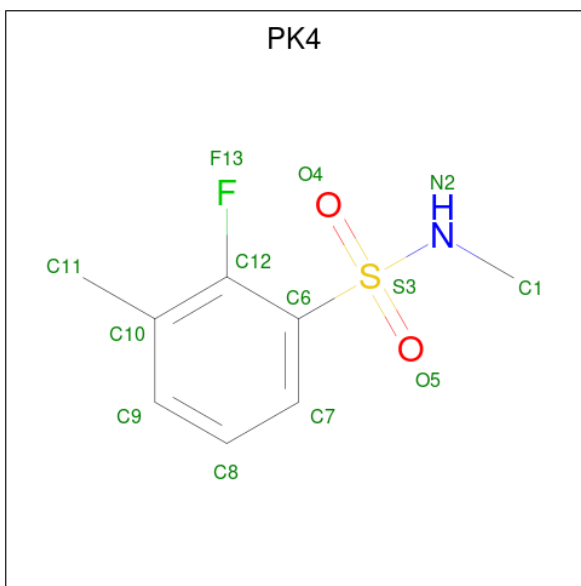
- Molecule 1 is a protein called Protease 2A.

Mol	Chain	Residues	Atoms					ZeroOcc	AltConf	Trace
			Total	C	N	O	S			
1	A	140	1097	683	195	212	7	0	2	0

There are 6 discrepancies between the modelled and reference sequences:

Chain	Residue	Modelled	Actual	Comment	Reference
A	1	GLN	-	expression tag	UNP Q65900
A	2	GLU	-	expression tag	UNP Q65900
A	3	GLN	-	expression tag	UNP Q65900
A	4	THR	-	expression tag	UNP Q65900
A	5	GLY	-	expression tag	UNP Q65900
A	6	GLY	-	expression tag	UNP Q65900

- Molecule 2 is 2-fluoro-N,3-dimethylbenzene-1-sulfonamide (three-letter code: PK4) (formula:  $C_8H_{10}FNO_2S$ ).

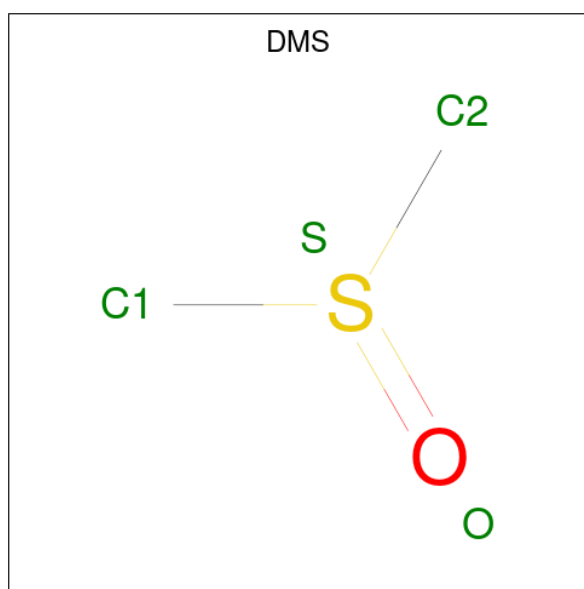


Mol	Chain	Residues	Atoms					ZeroOcc	AltConf	
			Total	C	F	N	O			S
2	A	1	13	8	1	1	2	1	0	0

- Molecule 3 is ZINC ION (three-letter code: ZN) (formula: Zn).

Mol	Chain	Residues	Atoms		ZeroOcc	AltConf
			Total	Zn		
3	A	1	1	1	0	0

- Molecule 4 is DIMETHYL SULFOXIDE (three-letter code: DMS) (formula: C<sub>2</sub>H<sub>6</sub>OS).



Mol	Chain	Residues	Atoms				ZeroOcc	AltConf
			Total	C	O	S		
4	A	1	4	2	1	1	0	0
4	A	1	4	2	1	1	0	0
4	A	1	4	2	1	1	0	0
4	A	1	4	2	1	1	0	0
4	A	1	4	2	1	1	0	0

- Molecule 5 is SULFATE ION (three-letter code: SO<sub>4</sub>) (formula: O<sub>4</sub>S).



Mol	Chain	Residues	Atoms			ZeroOcc	AltConf
5	A	1	Total	O	S	0	0
			5	4	1		

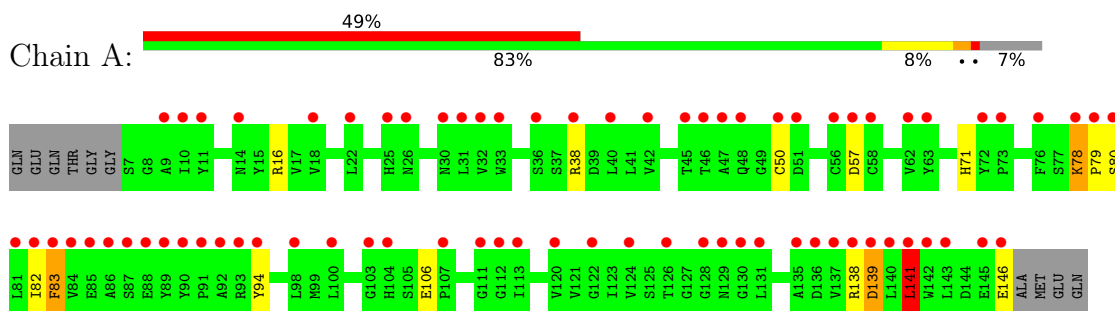
- Molecule 6 is water.

Mol	Chain	Residues	Atoms		ZeroOcc	AltConf
6	A	234	Total	O	0	0
			234	234		

### 3 Residue-property plots [i](#)

These plots are drawn for all protein, RNA, DNA and oligosaccharide chains in the entry. The first graphic for a chain summarises the proportions of the various outlier classes displayed in the second graphic. The second graphic shows the sequence view annotated by issues in geometry and electron density. Residues are color-coded according to the number of geometric quality criteria for which they contain at least one outlier: green = 0, yellow = 1, orange = 2 and red = 3 or more. A red dot above a residue indicates a poor fit to the electron density ( $RSRZ > 2$ ). Stretches of 2 or more consecutive residues without any outlier are shown as a green connector. Residues present in the sample, but not in the model, are shown in grey.

- Molecule 1: Protease 2A



## 4 Data and refinement statistics

Property	Value	Source
Space group	C 1 2 1	Depositor
Cell constants a, b, c, $\alpha$ , $\beta$ , $\gamma$	85.97Å 56.24Å 32.39Å 90.00° 95.04° 90.00°	Depositor
Resolution (Å)	47.01 – 1.39 47.01 – 1.39	Depositor EDS
% Data completeness (in resolution range)	98.7 (47.01-1.39) 98.8 (47.01-1.39)	Depositor EDS
$R_{merge}$	0.21	Depositor
$R_{sym}$	(Not available)	Depositor
$\langle I/\sigma(I) \rangle$ <sup>1</sup>	1.13 (at 1.39Å)	Xtrriage
Refinement program	REFMAC 5.8.0267, REFMAC5	Depositor
R, $R_{free}$	0.240 , 0.261 0.265 , 0.286	Depositor DCC
$R_{free}$ test set	1551 reflections (5.06%)	wwPDB-VP
Wilson B-factor (Å <sup>2</sup> )	15.5	Xtrriage
Anisotropy	0.057	Xtrriage
Bulk solvent $k_{sol}$ (e/Å <sup>3</sup> ), $B_{sol}$ (Å <sup>2</sup> )	0.24 , 34.7	EDS
L-test for twinning <sup>2</sup>	$\langle  L  \rangle = 0.49$ , $\langle L^2 \rangle = 0.33$	Xtrriage
Estimated twinning fraction	No twinning to report.	Xtrriage
$F_o, F_c$ correlation	0.90	EDS
Total number of atoms	1370	wwPDB-VP
Average B, all atoms (Å <sup>2</sup> )	21.0	wwPDB-VP

Xtrriage's analysis on translational NCS is as follows: *The analyses of the Patterson function reveals a significant off-origin peak that is 22.32 % of the origin peak, indicating pseudo-translational symmetry. The chance of finding a peak of this or larger height randomly in a structure without pseudo-translational symmetry is equal to 5.8361e-03. The detected translational NCS is most likely also responsible for the elevated intensity ratio.*

<sup>1</sup>Intensities estimated from amplitudes.

<sup>2</sup>Theoretical values of  $\langle |L| \rangle$ ,  $\langle L^2 \rangle$  for acentric reflections are 0.5, 0.333 respectively for untwinned datasets, and 0.375, 0.2 for perfectly twinned datasets.



## 5 Model quality [i](#)

### 5.1 Standard geometry [i](#)

Bond lengths and bond angles in the following residue types are not validated in this section: DMS, SO4, PK4, ZN

The Z score for a bond length (or angle) is the number of standard deviations the observed value is removed from the expected value. A bond length (or angle) with  $|Z| > 5$  is considered an outlier worth inspection. RMSZ is the root-mean-square of all Z scores of the bond lengths (or angles).

Mol	Chain	Bond lengths		Bond angles	
		RMSZ	# Z  >5	RMSZ	# Z  >5
1	A	0.90	2/1123 (0.2%)	1.11	8/1527 (0.5%)

Chiral center outliers are detected by calculating the chiral volume of a chiral center and verifying if the center is modelled as a planar moiety or with the opposite hand. A planarity outlier is detected by checking planarity of atoms in a peptide group, atoms in a mainchain group or atoms of a sidechain that are expected to be planar.

Mol	Chain	#Chirality outliers	#Planarity outliers
1	A	0	1

All (2) bond length outliers are listed below:

Mol	Chain	Res	Type	Atoms	Z	Observed(Å)	Ideal(Å)
1	A	139	ASP	C-O	-6.79	1.10	1.23
1	A	79	PRO	N-CD	-5.25	1.40	1.47

All (8) bond angle outliers are listed below:

Mol	Chain	Res	Type	Atoms	Z	Observed(°)	Ideal(°)
1	A	141	LEU	CB-CG-CD2	6.98	122.87	111.00
1	A	138	ARG	CD-NE-CZ	6.48	132.67	123.60
1	A	139	ASP	CB-CA-C	5.73	121.85	110.40
1	A	83	PHE	C-N-CA	5.65	135.82	121.70
1	A	16	ARG	NE-CZ-NH2	-5.34	117.63	120.30
1	A	79	PRO	O-C-N	5.24	131.09	122.70
1	A	78	LYS	CB-CG-CD	5.23	125.20	111.60
1	A	38	ARG	NE-CZ-NH1	-5.08	117.76	120.30

There are no chirality outliers.

All (1) planarity outliers are listed below:

Mol	Chain	Res	Type	Group
1	A	141	LEU	Mainchain

## 5.2 Too-close contacts [i](#)

In the following table, the Non-H and H(model) columns list the number of non-hydrogen atoms and hydrogen atoms in the chain respectively. The H(added) column lists the number of hydrogen atoms added and optimized by MolProbity. The Clashes column lists the number of clashes within the asymmetric unit, whereas Symm-Clashes lists symmetry-related clashes.

Mol	Chain	Non-H	H(model)	H(added)	Clashes	Symm-Clashes
1	A	1097	0	1030	12	1
2	A	13	0	0	0	0
3	A	1	0	0	0	0
4	A	20	0	30	3	0
5	A	5	0	0	0	5
6	A	234	0	0	9	1
All	All	1370	0	1060	15	6

The all-atom clashscore is defined as the number of clashes found per 1000 atoms (including hydrogen atoms). The all-atom clashscore for this structure is 7.

All (15) close contacts within the same asymmetric unit are listed below, sorted by their clash magnitude.

Atom-1	Atom-2	Interatomic distance (Å)	Clash overlap (Å)
4:A:203:DMS:H22	6:A:481:HOH:O	1.91	0.71
1:A:106:GLU:OE1	6:A:301:HOH:O	2.10	0.69
1:A:139:ASP:OD2	6:A:302:HOH:O	2.11	0.69
1:A:83:PHE:HB2	1:A:94:TYR:CE1	2.36	0.61
1:A:83:PHE:HB2	1:A:94:TYR:CZ	2.36	0.60
1:A:50:CYS:HB2	6:A:417:HOH:O	2.02	0.58
1:A:57[B]:ASP:OD1	1:A:78:LYS:HE2	2.09	0.53
1:A:80:SER:HB2	6:A:320:HOH:O	2.09	0.52
4:A:203:DMS:H23	6:A:411:HOH:O	2.13	0.48
1:A:82:ILE:O	1:A:94:TYR:HA	2.14	0.47
1:A:139:ASP:CG	6:A:305:HOH:O	2.52	0.47
1:A:82:ILE:HD12	1:A:82:ILE:HG23	1.55	0.44
4:A:203:DMS:C2	6:A:411:HOH:O	2.66	0.43
1:A:71:HIS:HE1	6:A:446:HOH:O	2.02	0.42
1:A:82:ILE:HG22	1:A:83:PHE:O	2.20	0.41

All (6) symmetry-related close contacts are listed below. The label for Atom-2 includes the sym-

metry operator and encoded unit-cell translations to be applied.

Atom-1	Atom-2	Interatomic distance (Å)	Clash overlap (Å)
5:A:208:SO4:O3	5:A:208:SO4:O4[2_556]	0.95	1.25
5:A:208:SO4:S	5:A:208:SO4:O3[2_556]	1.61	0.59
5:A:208:SO4:O3	5:A:208:SO4:O3[2_556]	1.84	0.36
5:A:208:SO4:S	5:A:208:SO4:S[2_556]	2.03	0.17
5:A:208:SO4:S	5:A:208:SO4:O4[2_556]	2.05	0.15
1:A:141:LEU:CD2	6:A:301:HOH:O[1_554]	2.12	0.08

## 5.3 Torsion angles [i](#)

### 5.3.1 Protein backbone [i](#)

In the following table, the Percentiles column shows the percent Ramachandran outliers of the chain as a percentile score with respect to all X-ray entries followed by that with respect to entries of similar resolution.

The Analysed column shows the number of residues for which the backbone conformation was analysed, and the total number of residues.

Mol	Chain	Analysed	Favoured	Allowed	Outliers	Percentiles
1	A	140/150 (93%)	138 (99%)	2 (1%)	0	<a href="#">100</a> <a href="#">100</a>

There are no Ramachandran outliers to report.

### 5.3.2 Protein sidechains [i](#)

In the following table, the Percentiles column shows the percent sidechain outliers of the chain as a percentile score with respect to all X-ray entries followed by that with respect to entries of similar resolution.

The Analysed column shows the number of residues for which the sidechain conformation was analysed, and the total number of residues.

Mol	Chain	Analysed	Rotameric	Outliers	Percentiles
1	A	119/124 (96%)	117 (98%)	2 (2%)	<a href="#">60</a> <a href="#">31</a>

All (2) residues with a non-rotameric sidechain are listed below:

Mol	Chain	Res	Type
1	A	141	LEU
1	A	146	GLU

Sometimes sidechains can be flipped to improve hydrogen bonding and reduce clashes. All (2) such sidechains are listed below:

Mol	Chain	Res	Type
1	A	48	GLN
1	A	71	HIS

### 5.3.3 RNA [i](#)

There are no RNA molecules in this entry.

## 5.4 Non-standard residues in protein, DNA, RNA chains [i](#)

There are no non-standard protein/DNA/RNA residues in this entry.

## 5.5 Carbohydrates [i](#)

There are no monosaccharides in this entry.

## 5.6 Ligand geometry [i](#)

Of 8 ligands modelled in this entry, 1 is monoatomic - leaving 7 for Mogul analysis.

In the following table, the Counts columns list the number of bonds (or angles) for which Mogul statistics could be retrieved, the number of bonds (or angles) that are observed in the model and the number of bonds (or angles) that are defined in the Chemical Component Dictionary. The Link column lists molecule types, if any, to which the group is linked. The Z score for a bond length (or angle) is the number of standard deviations the observed value is removed from the expected value. A bond length (or angle) with  $|Z| > 2$  is considered an outlier worth inspection. RMSZ is the root-mean-square of all Z scores of the bond lengths (or angles).

Mol	Type	Chain	Res	Link	Bond lengths			Bond angles		
					Counts	RMSZ	# $ Z  > 2$	Counts	RMSZ	# $ Z  > 2$
2	PK4	A	201	-	11,13,13	1.86	3 (27%)	13,19,19	2.60	5 (38%)
4	DMS	A	206	-	3,3,3	0.21	0	3,3,3	0.14	0
4	DMS	A	203	-	3,3,3	0.29	0	3,3,3	0.35	0
5	SO4	A	208	-	4,4,4	0.38	0	6,6,6	0.05	0
4	DMS	A	205	-	3,3,3	0.20	0	3,3,3	0.09	0
4	DMS	A	204	-	3,3,3	0.37	0	3,3,3	0.21	0
4	DMS	A	207	-	3,3,3	0.19	0	3,3,3	0.17	0

In the following table, the Chirals column lists the number of chiral outliers, the number of chiral centers analysed, the number of these observed in the model and the number defined in the

Chemical Component Dictionary. Similar counts are reported in the Torsion and Rings columns. '-' means no outliers of that kind were identified.

Mol	Type	Chain	Res	Link	Chirals	Torsions	Rings
2	PK4	A	201	-	-	2/9/9/9	0/1/1/1

All (3) bond length outliers are listed below:

Mol	Chain	Res	Type	Atoms	Z	Observed(Å)	Ideal(Å)
2	A	201	PK4	C6-S3	-3.24	1.72	1.77
2	A	201	PK4	C7-C6	-3.14	1.35	1.39
2	A	201	PK4	O4-S3	-2.64	1.40	1.43

All (5) bond angle outliers are listed below:

Mol	Chain	Res	Type	Atoms	Z	Observed(°)	Ideal(°)
2	A	201	PK4	O5-S3-C6	6.65	118.60	107.66
2	A	201	PK4	O5-S3-N2	-3.46	103.17	107.08
2	A	201	PK4	C6-S3-N2	-3.38	103.08	107.74
2	A	201	PK4	F13-C12-C6	-2.78	115.59	120.76
2	A	201	PK4	C7-C6-S3	2.26	120.49	117.42

There are no chirality outliers.

All (2) torsion outliers are listed below:

Mol	Chain	Res	Type	Atoms
2	A	201	PK4	C1-N2-S3-C6
2	A	201	PK4	C1-N2-S3-O5

There are no ring outliers.

2 monomers are involved in 8 short contacts:

Mol	Chain	Res	Type	Clashes	Symm-Clashes
4	A	203	DMS	3	0
5	A	208	SO4	0	5

## 5.7 Other polymers [i](#)

There are no such residues in this entry.

## 5.8 Polymer linkage issues

There are no chain breaks in this entry.

## 6 Fit of model and data

### 6.1 Protein, DNA and RNA chains

In the following table, the column labelled ‘#RSRZ > 2’ contains the number (and percentage) of RSRZ outliers, followed by percent RSRZ outliers for the chain as percentile scores relative to all X-ray entries and entries of similar resolution. The OWAB column contains the minimum, median, 95<sup>th</sup> percentile and maximum values of the occupancy-weighted average B-factor per residue. The column labelled ‘Q < 0.9’ lists the number of (and percentage) of residues with an average occupancy less than 0.9.

Mol	Chain	Analysed	<RSRZ>	#RSRZ>2	OWAB(Å <sup>2</sup> )	Q<0.9
1	A	140/150 (93%)	4.36	74 (52%) <b>0</b> <b>0</b>	10, 16, 28, 68	18 (12%)

All (74) RSRZ outliers are listed below:

Mol	Chain	Res	Type	RSRZ
1	A	82	ILE	27.7
1	A	142	TRP	27.1
1	A	141	LEU	25.3
1	A	137	VAL	24.9
1	A	140	LEU	24.7
1	A	143	LEU	24.5
1	A	81	LEU	24.1
1	A	83	PHE	24.0
1	A	135	ALA	17.3
1	A	79	PRO	16.3
1	A	80	SER	14.6
1	A	138	ARG	13.4
1	A	36[A]	SER	12.9
1	A	139	ASP	12.9
1	A	38	ARG	12.7
1	A	136	ASP	12.6
1	A	57[A]	ASP	12.2
1	A	78	LYS	12.1
1	A	50	CYS	11.5
1	A	94	TYR	8.5
1	A	89	TYR	6.4
1	A	146	GLU	5.9
1	A	128	GLY	5.4
1	A	46	THR	5.1
1	A	47	ALA	5.1
1	A	45	THR	4.7
1	A	129	ASN	4.6

*Continued on next page...*

*Continued from previous page...*

<b>Mol</b>	<b>Chain</b>	<b>Res</b>	<b>Type</b>	<b>RSRZ</b>
1	A	73	PRO	4.5
1	A	88	GLU	4.5
1	A	72	TYR	4.3
1	A	84	VAL	4.2
1	A	9	ALA	4.1
1	A	90	TYR	4.0
1	A	130	GLY	3.8
1	A	91	PRO	3.8
1	A	58	CYS	3.8
1	A	111	GLY	3.8
1	A	107	PRO	3.7
1	A	22	LEU	3.7
1	A	33	TRP	3.6
1	A	85	GLU	3.5
1	A	120	VAL	3.5
1	A	98	LEU	3.4
1	A	86	ALA	3.0
1	A	113	ILE	3.0
1	A	100	LEU	3.0
1	A	76	PHE	2.9
1	A	51	ASP	2.9
1	A	25	HIS	2.8
1	A	126	THR	2.8
1	A	92	ALA	2.8
1	A	145	GLU	2.7
1	A	18	VAL	2.5
1	A	104	HIS	2.5
1	A	30	ASN	2.5
1	A	48	GLN	2.5
1	A	10	ILE	2.5
1	A	14	ASN	2.4
1	A	124	VAL	2.4
1	A	103	GLY	2.4
1	A	11	TYR	2.4
1	A	56	CYS	2.3
1	A	32	VAL	2.3
1	A	42	VAL	2.3
1	A	93	ARG	2.3
1	A	87	SER	2.2
1	A	112	GLY	2.2
1	A	26	ASN	2.1
1	A	62	VAL	2.1

*Continued on next page...*



*Continued from previous page...*

Mol	Chain	Res	Type	RSRZ
1	A	63	TYR	2.1
1	A	40	LEU	2.1
1	A	122	GLY	2.0
1	A	31	LEU	2.0
1	A	131	LEU	2.0

## 6.2 Non-standard residues in protein, DNA, RNA chains [i](#)

There are no non-standard protein/DNA/RNA residues in this entry.

## 6.3 Carbohydrates [i](#)

There are no monosaccharides in this entry.

## 6.4 Ligands [i](#)

In the following table, the Atoms column lists the number of modelled atoms in the group and the number defined in the chemical component dictionary. The B-factors column lists the minimum, median, 95<sup>th</sup> percentile and maximum values of B factors of atoms in the group. The column labelled 'Q< 0.9' lists the number of atoms with occupancy less than 0.9.

Mol	Type	Chain	Res	Atoms	RSCC	RSR	B-factors(Å <sup>2</sup> )	Q<0.9
2	PK4	A	201	13/13	0.59	0.32	20,20,20,20	13
4	DMS	A	205	4/4	0.59	0.20	52,57,59,59	0
4	DMS	A	203	4/4	0.62	0.35	32,38,38,49	0
5	SO4	A	208	5/5	0.73	0.93	45,48,49,49	0
4	DMS	A	207	4/4	0.80	0.38	40,41,45,51	0
4	DMS	A	206	4/4	0.88	0.22	30,31,33,35	0
4	DMS	A	204	4/4	0.97	0.20	27,31,31,32	0
3	ZN	A	202	1/1	0.99	0.04	12,12,12,12	0

## 6.5 Other polymers [i](#)

There are no such residues in this entry.