



Full wwPDB X-ray Structure Validation Report ⓘ

Jun 11, 2024 – 06:10 PM EDT

PDB ID : 1H66
Title : CRYSTAL STRUCTURE OF HUMAN NAD[P]H-QUINONE OXIDOREDUCTASE CO WITH 2,5-diaziridinyl-3-hydroxyl-6-methyl-1,4-benzoquinone
Authors : Faig, M.; Bianchet, M.A.; Winski, S.; Ross, D.; Amzel, L.M.
Deposited on : 2001-06-06
Resolution : 2.00 Å(reported)

This is a Full wwPDB X-ray Structure Validation Report for a publicly released PDB entry.

We welcome your comments at validation@mail.wwpdb.org

A user guide is available at

<https://www.wwpdb.org/validation/2017/XrayValidationReportHelp>

with specific help available everywhere you see the ⓘ symbol.

The types of validation reports are described at

<http://www.wwpdb.org/validation/2017/FAQs#types>.

The following versions of software and data (see [references ⓘ](#)) were used in the production of this report:

MolProbity : 4.02b-467
Mogul : 2022.3.0, CSD as543be (2022)
Xtrriage (Phenix) : **NOT EXECUTED**
EDS : **NOT EXECUTED**
buster-report : 1.1.7 (2018)
Percentile statistics : 20191225.v01 (using entries in the PDB archive December 25th 2019)
Ideal geometry (proteins) : Engh & Huber (2001)
Ideal geometry (DNA, RNA) : Parkinson et al. (1996)
Validation Pipeline (wwPDB-VP) : 2.36.2

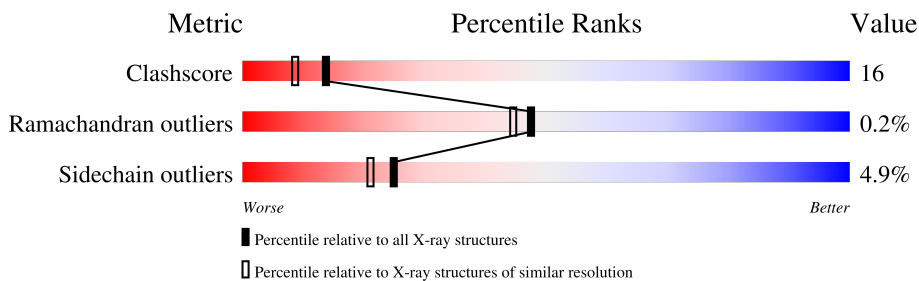
1 Overall quality at a glance

The following experimental techniques were used to determine the structure:

X-RAY DIFFRACTION

The reported resolution of this entry is 2.00 Å.

Percentile scores (ranging between 0-100) for global validation metrics of the entry are shown in the following graphic. The table shows the number of entries on which the scores are based.



Metric	Whole archive (#Entries)	Similar resolution (#Entries, resolution range(Å))
Clashscore	141614	9178 (2.00-2.00)
Ramachandran outliers	138981	9054 (2.00-2.00)
Sidechain outliers	138945	9053 (2.00-2.00)

The table below summarises the geometric issues observed across the polymeric chains and their fit to the electron density. The red, orange, yellow and green segments of the lower bar indicate the fraction of residues that contain outliers for ≥ 3 , 2, 1 and 0 types of geometric quality criteria respectively. A grey segment represents the fraction of residues that are not modelled. The numeric value for each fraction is indicated below the corresponding segment, with a dot representing fractions $\leq 5\%$.

Note EDS was not executed.

Mol	Chain	Length	Quality of chain
1	A	273	
1	B	273	
1	C	273	
1	D	273	

2 Entry composition

There are 4 unique types of molecules in this entry. The entry contains 9673 atoms, of which 0 are hydrogens and 0 are deuteriums.

In the tables below, the ZeroOcc column contains the number of atoms modelled with zero occupancy, the AltConf column contains the number of residues with at least one atom in alternate conformation and the Trace column contains the number of residues modelled with at most 2 atoms.

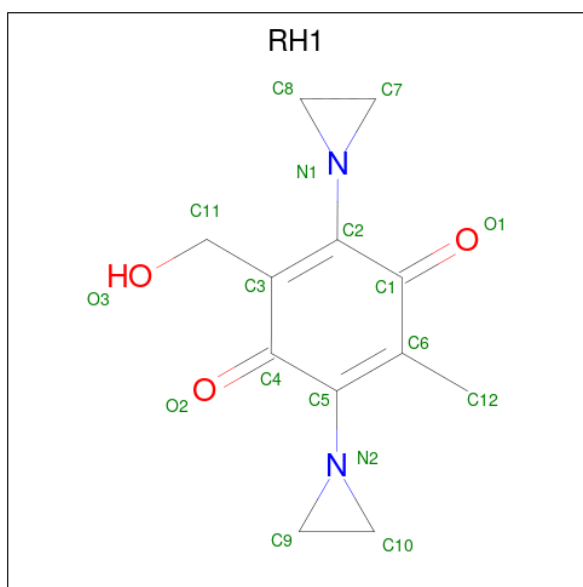
- Molecule 1 is a protein called NAD(P)H DEHYDROGENASE [QUINONE] 1.

Mol	Chain	Residues	Atoms					ZeroOcc	AltConf	Trace
			Total	C	N	O	S			
1	A	273	2173	1412	365	389	7	0	0	0
1	B	273	2173	1412	365	389	7	0	0	0
1	C	273	2173	1412	365	389	7	0	0	0
1	D	273	2173	1412	365	389	7	0	0	0

There are 4 discrepancies between the modelled and reference sequences:

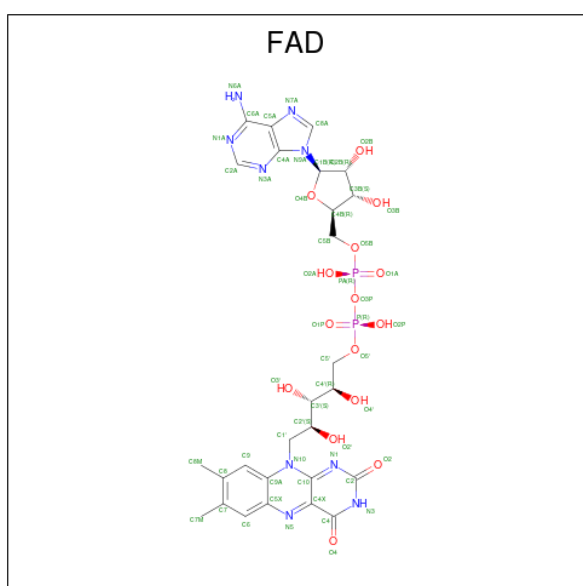
Chain	Residue	Modelled	Actual	Comment	Reference
A	1	ALA	VAL	conflict	UNP P15559
B	1	ALA	VAL	conflict	UNP P15559
C	1	ALA	VAL	conflict	UNP P15559
D	1	ALA	VAL	conflict	UNP P15559

- Molecule 2 is 2,5-DIAZIRIDIN-1-YL-3-(HYDROXYMETHYL)-6-METHYLCYCLOHEXA-2,5-DIENE-1,4-DIONE (three-letter code: RH1) (formula: C₁₂H₁₄N₂O₃).



Mol	Chain	Residues	Atoms			ZeroOcc	AltConf	
			Total	C	N			O
2	A	1	Total	C	N	O	0	0
			17	12	2	3		
2	B	1	Total	C	N	O	0	0
			17	12	2	3		
2	C	1	Total	C	N	O	0	0
			17	12	2	3		
2	D	1	Total	C	N	O	0	0
			17	12	2	3		

- Molecule 3 is FLAVIN-ADENINE DINUCLEOTIDE (three-letter code: FAD) (formula: $C_{27}H_{33}N_9O_{15}P_2$).



Mol	Chain	Residues	Atoms					ZeroOcc	AltConf
3	A	1	Total	C	N	O	P	0	0
			53	27	9	15	2		
3	B	1	Total	C	N	O	P	0	0
			53	27	9	15	2		
3	C	1	Total	C	N	O	P	0	0
			53	27	9	15	2		
3	D	1	Total	C	N	O	P	0	0
			53	27	9	15	2		

- Molecule 4 is water.

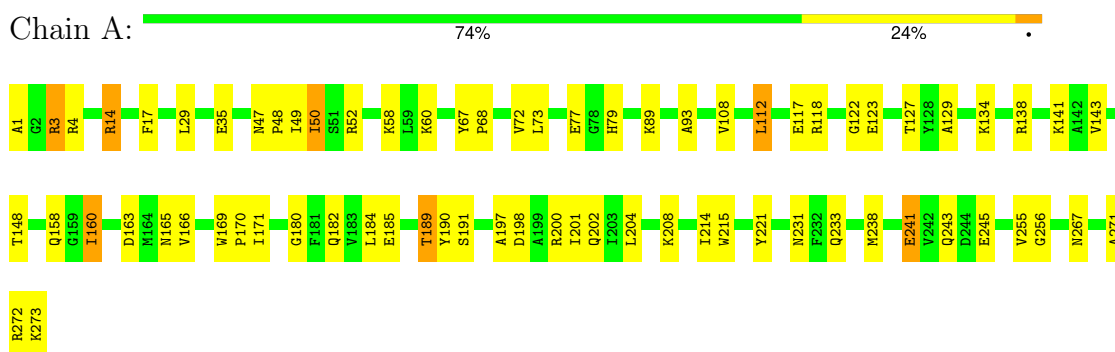
Mol	Chain	Residues	Atoms		ZeroOcc	AltConf
4	A	172	Total	O	0	0
			172	172		
4	B	199	Total	O	0	0
			199	199		
4	C	134	Total	O	0	0
			134	134		
4	D	196	Total	O	0	0
			196	196		

3 Residue-property plots [i](#)

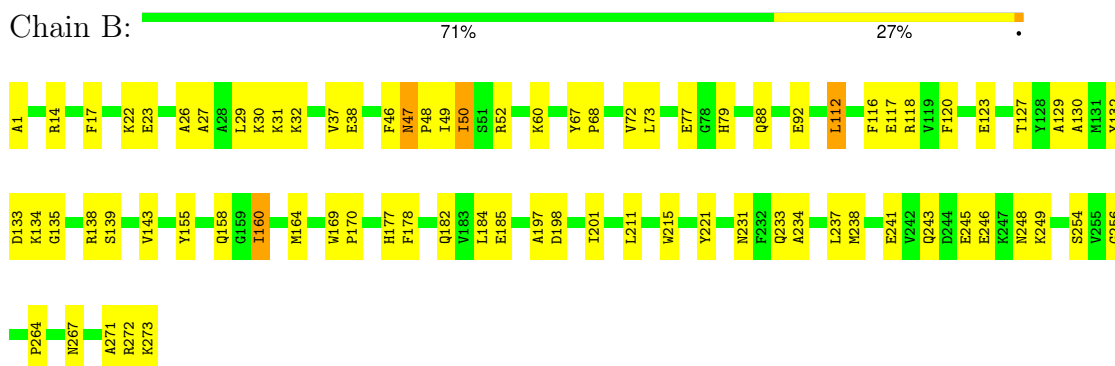
These plots are drawn for all protein, RNA, DNA and oligosaccharide chains in the entry. The first graphic for a chain summarises the proportions of the various outlier classes displayed in the second graphic. The second graphic shows the sequence view annotated by issues in geometry. Residues are color-coded according to the number of geometric quality criteria for which they contain at least one outlier: green = 0, yellow = 1, orange = 2 and red = 3 or more. Stretches of 2 or more consecutive residues without any outlier are shown as a green connector. Residues present in the sample, but not in the model, are shown in grey.

Note EDS was not executed.

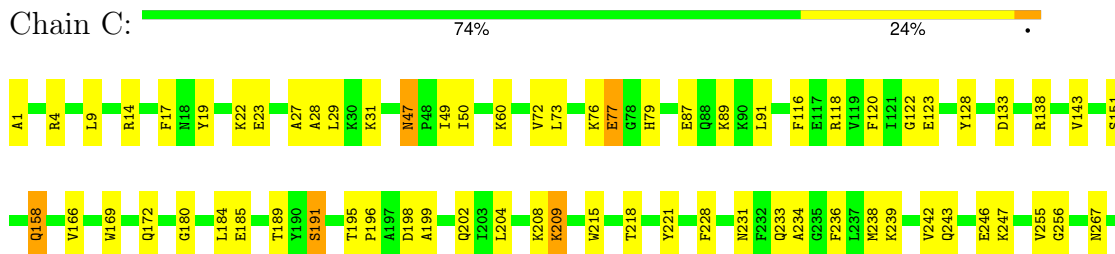
- Molecule 1: NAD(P)H DEHYDROGENASE [QUINONE] 1



- Molecule 1: NAD(P)H DEHYDROGENASE [QUINONE] 1



- Molecule 1: NAD(P)H DEHYDROGENASE [QUINONE] 1



K270
A271
R272
K273

● Molecule 1: NAD(P)H DEHYDROGENASE [QUINONE] 1

Chain D:  72% 24%

A1 G2 R3 R4 I7 R14 F17 A20 M21 K22 E23 A24 A25 L29 K32 I49 I50 S51 A52 K68 L59 K60 S71 G78 H79 Q88 L91 E92 R118 V119 F120 I121 G122 E123 Y132 R138 V143 G149 G150 S151 G152 M154

Y155 Q158 M164 M169 P170 H177 G180 F181 Q182 V183 L184 T189 R200 L204 K208 K209 I214 W215 D216 E217 Y221 P224 L227 F228 D229 L230 M231 F232 Q233 F236 L237 M238 K239 K240 E241 V242 Q243 D244 K247 N248 S254 V255 G256

P284 M287 A271 R272 K273

4 Data and refinement statistics

Xtrriage (Phenix) and EDS were not executed - this section is therefore incomplete.

Property	Value	Source
Space group	P 1	Depositor
Cell constants a, b, c, α , β , γ	56.19Å 57.08Å 97.32Å 77.05° 77.07° 87.22°	Depositor
Resolution (Å)	19.96 – 2.00	Depositor
% Data completeness (in resolution range)	95.1 (19.96-2.00)	Depositor
R_{merge}	0.09	Depositor
R_{sym}	(Not available)	Depositor
Refinement program	CNS 1.0	Depositor
R, R_{free}	0.256 , 0.199	Depositor
Estimated twinning fraction	No twinning to report.	Xtrriage
Total number of atoms	9673	wwPDB-VP
Average B, all atoms (Å ²)	22.0	wwPDB-VP

5 Model quality [i](#)

5.1 Standard geometry [i](#)

Bond lengths and bond angles in the following residue types are not validated in this section: RH1, FAD

The Z score for a bond length (or angle) is the number of standard deviations the observed value is removed from the expected value. A bond length (or angle) with $|Z| > 5$ is considered an outlier worth inspection. RMSZ is the root-mean-square of all Z scores of the bond lengths (or angles).

Mol	Chain	Bond lengths		Bond angles	
		RMSZ	# Z >5	RMSZ	# Z >5
1	A	0.41	0/2231	0.64	1/3012 (0.0%)
1	B	0.40	0/2231	0.65	1/3012 (0.0%)
1	C	0.41	0/2231	0.62	0/3012
1	D	0.41	0/2231	0.62	1/3012 (0.0%)
All	All	0.40	0/8924	0.63	3/12048 (0.0%)

There are no bond length outliers.

All (3) bond angle outliers are listed below:

Mol	Chain	Res	Type	Atoms	Z	Observed(°)	Ideal(°)
1	D	182	GLN	N-CA-C	-5.42	96.38	111.00
1	A	182	GLN	N-CA-C	-5.15	97.09	111.00
1	B	182	GLN	N-CA-C	-5.05	97.37	111.00

There are no chirality outliers.

There are no planarity outliers.

5.2 Too-close contacts [i](#)

In the following table, the Non-H and H(model) columns list the number of non-hydrogen atoms and hydrogen atoms in the chain respectively. The H(added) column lists the number of hydrogen atoms added and optimized by MolProbity. The Clashes column lists the number of clashes within the asymmetric unit, whereas Symm-Clashes lists symmetry-related clashes.

Mol	Chain	Non-H	H(model)	H(added)	Clashes	Symm-Clashes
1	A	2173	0	2175	74	0
1	B	2173	0	2175	69	0
1	C	2173	0	2175	84	0
1	D	2173	0	2175	64	0

Continued on next page...

Continued from previous page...

Mol	Chain	Non-H	H(model)	H(added)	Clashes	Symm-Clashes
2	A	17	0	14	0	0
2	B	17	0	14	1	0
2	C	17	0	14	1	0
2	D	17	0	14	1	0
3	A	53	0	31	4	0
3	B	53	0	31	2	0
3	C	53	0	31	3	0
3	D	53	0	31	4	0
4	A	172	0	0	8	0
4	B	199	0	0	7	0
4	C	134	0	0	4	0
4	D	196	0	0	9	0
All	All	9673	0	8880	283	0

The all-atom clashscore is defined as the number of clashes found per 1000 atoms (including hydrogen atoms). The all-atom clashscore for this structure is 16.

All (283) close contacts within the same asymmetric unit are listed below, sorted by their clash magnitude.

Atom-1	Atom-2	Interatomic distance (Å)	Clash overlap (Å)
1:D:3:ARG:HH11	1:D:3:ARG:HB3	0.93	1.07
1:C:221:TYR:HB2	1:C:273:LYS:HG3	1.41	1.02
1:D:3:ARG:HB3	1:D:3:ARG:NH1	1.75	1.00
1:A:148:THR:HG22	1:A:190:TYR:HA	1.45	0.97
1:B:135:GLY:O	1:B:138:ARG:HG3	1.68	0.94
1:D:3:ARG:HH11	1:D:3:ARG:CB	1.80	0.93
1:D:233:GLN:HE21	1:D:233:GLN:HA	1.35	0.92
1:D:17:PHE:HB2	3:D:1275:FAD:H52A	1.50	0.91
1:B:50:ILE:HD12	1:B:117:GLU:HB3	1.50	0.90
1:A:17:PHE:HB2	3:A:1275:FAD:H52A	1.53	0.90
1:C:14:ARG:HH11	1:C:14:ARG:HB2	1.40	0.87
1:C:17:PHE:HB2	3:C:1275:FAD:H52A	1.54	0.87
1:D:21:MET:CE	1:D:204:LEU:HD23	2.06	0.85
1:A:58:LYS:HE2	1:A:58:LYS:HA	1.58	0.85
1:D:21:MET:HE3	1:D:204:LEU:HD23	1.57	0.84
1:C:14:ARG:HB2	1:C:14:ARG:NH1	1.92	0.84
1:B:17:PHE:HB2	3:B:1275:FAD:H52A	1.59	0.83
1:B:127:THR:HG22	1:B:129:ALA:H	1.43	0.83
1:D:273:LYS:HE2	4:D:2190:HOH:O	1.79	0.83
1:A:68:PRO:O	1:A:72:VAL:HG23	1.81	0.79
1:A:50:ILE:HD12	1:A:117:GLU:HB3	1.63	0.79

Continued on next page...

Continued from previous page...

Atom-1	Atom-2	Interatomic distance (Å)	Clash overlap (Å)
1:A:127:THR:HG22	1:A:129:ALA:H	1.48	0.78
1:D:32:LYS:HE2	1:D:32:LYS:HA	1.65	0.78
1:C:221:TYR:CB	1:C:273:LYS:HG3	2.13	0.78
1:C:273:LYS:HD2	1:C:273:LYS:N	1.99	0.77
1:D:238:MET:HE3	1:D:243:GLN:HG2	1.65	0.76
1:A:271:ALA:O	1:A:272:ARG:HB3	1.85	0.75
1:C:273:LYS:HA	1:C:273:LYS:HZ2	1.52	0.75
1:A:221:TYR:HB2	1:A:273:LYS:HB3	1.68	0.75
1:A:148:THR:CG2	1:A:190:TYR:HA	2.17	0.74
1:A:221:TYR:CB	1:A:273:LYS:HB3	2.17	0.74
1:C:143:VAL:HG22	1:C:184:LEU:HB2	1.68	0.73
1:C:14:ARG:HH11	1:C:14:ARG:CB	2.01	0.73
1:D:17:PHE:HB2	3:D:1275:FAD:C5B	2.19	0.73
1:A:189:THR:HG22	4:A:2123:HOH:O	1.88	0.72
1:D:20:ALA:HA	1:D:23:GLU:OE2	1.90	0.72
1:B:231:ASN:HD22	1:B:233:GLN:HB3	1.55	0.71
1:B:50:ILE:HG12	1:B:67:TYR:CZ	2.26	0.71
1:B:160:ILE:HG13	1:D:236:PHE:HB3	1.72	0.71
1:A:108:VAL:HG13	1:A:112:LEU:HB3	1.73	0.71
1:C:221:TYR:HB2	1:C:273:LYS:CG	2.19	0.71
1:C:238:MET:HE3	1:C:243:GLN:HG2	1.72	0.70
1:A:3:ARG:CZ	1:A:3:ARG:HA	2.22	0.70
1:A:50:ILE:HG13	1:A:118:ARG:HG2	1.74	0.70
1:C:17:PHE:HB2	3:C:1275:FAD:C5B	2.20	0.70
1:A:17:PHE:HB2	3:A:1275:FAD:C5B	2.20	0.70
1:C:221:TYR:N	1:C:273:LYS:HE3	2.07	0.69
1:C:27:ALA:O	1:C:31:LYS:HG3	1.92	0.69
1:B:143:VAL:HG22	1:B:184:LEU:HB2	1.74	0.69
1:B:160:ILE:CG1	1:D:236:PHE:HB3	2.23	0.69
1:A:202:GLN:HG3	4:A:2133:HOH:O	1.91	0.69
1:B:241:GLU:O	1:B:245:GLU:HG3	1.92	0.68
1:B:231:ASN:ND2	1:B:234:ALA:H	1.91	0.68
1:C:204:LEU:O	1:C:208:LYS:HG3	1.93	0.68
1:B:221:TYR:CB	1:B:273:LYS:HB2	2.24	0.67
1:C:1:ALA:HA	1:C:215:TRP:NE1	2.10	0.67
1:C:271:ALA:O	1:C:272:ARG:HB3	1.94	0.67
1:D:271:ALA:O	1:D:272:ARG:HB2	1.95	0.67
1:A:134:LYS:HD2	4:A:2098:HOH:O	1.94	0.66
1:C:72:VAL:HG13	1:C:123:GLU:HG3	1.78	0.65
1:D:169:TRP:HB3	1:D:170:PRO:HD3	1.79	0.65
1:D:244:ASP:HA	1:D:247:LYS:HG3	1.79	0.65

Continued on next page...

Continued from previous page...

Atom-1	Atom-2	Interatomic distance (Å)	Clash overlap (Å)
1:B:246:GLU:OE2	1:B:249:LYS:HD2	1.96	0.65
1:D:264:PRO:HB2	1:D:273:LYS:HE3	1.79	0.65
1:C:221:TYR:HB2	1:C:273:LYS:HZ2	1.61	0.64
1:D:169:TRP:CZ2	1:D:256:GLY:HA3	2.33	0.64
1:C:28:ALA:HA	1:C:31:LYS:HD2	1.79	0.64
1:A:148:THR:HG23	1:A:191:SER:H	1.63	0.64
1:C:271:ALA:HA	1:C:273:LYS:HE2	1.79	0.64
1:C:272:ARG:C	1:C:273:LYS:HZ3	2.02	0.63
1:B:17:PHE:HB2	3:B:1275:FAD:C5B	2.27	0.63
1:A:108:VAL:CG1	1:A:112:LEU:HB3	2.28	0.63
1:D:58:LYS:NZ	1:D:58:LYS:HB3	2.12	0.62
1:D:122:GLY:O	1:D:123:GLU:HB2	2.00	0.62
1:A:273:LYS:OXT	1:A:273:LYS:HG3	2.00	0.61
1:C:238:MET:CE	1:C:243:GLN:HG2	2.30	0.61
1:B:238:MET:HE3	1:B:243:GLN:HG2	1.81	0.61
1:B:1:ALA:HA	1:B:215:TRP:NE1	2.15	0.61
1:A:122:GLY:O	1:A:123:GLU:HB3	1.99	0.61
1:A:138:ARG:HA	1:A:180:GLY:O	2.01	0.61
1:D:255:VAL:HG23	1:D:267:ASN:HD22	1.65	0.60
1:A:48:PRO:HG3	1:C:49:ILE:HD11	1.82	0.60
1:B:60:LYS:HE3	1:B:73:LEU:HD21	1.84	0.60
1:B:127:THR:HG22	1:B:129:ALA:N	2.14	0.60
1:C:221:TYR:CD1	1:C:273:LYS:HB3	2.37	0.59
1:A:60:LYS:HE2	1:A:73:LEU:HD22	1.84	0.59
1:C:50:ILE:HG22	1:C:118:ARG:HG2	1.82	0.59
1:D:233:GLN:HA	1:D:233:GLN:NE2	2.13	0.59
1:D:204:LEU:O	1:D:208:LYS:HG3	2.02	0.59
1:B:271:ALA:O	1:B:272:ARG:HB2	2.03	0.58
1:D:151:SER:H	1:D:154:MET:HE3	1.68	0.58
1:C:273:LYS:HA	1:C:273:LYS:NZ	2.18	0.58
1:C:122:GLY:O	1:C:123:GLU:HB2	2.04	0.58
1:A:241:GLU:O	1:A:245:GLU:HG3	2.04	0.58
1:B:238:MET:CE	1:B:243:GLN:HG2	2.34	0.58
1:D:52:ARG:HG2	4:D:2061:HOH:O	2.04	0.58
1:C:273:LYS:HD2	1:C:273:LYS:H	1.65	0.58
1:B:50:ILE:HG13	1:B:118:ARG:HG2	1.86	0.57
1:D:143:VAL:HG22	1:D:184:LEU:HB2	1.84	0.57
1:C:47:ASN:ND2	1:C:49:ILE:H	2.03	0.57
1:D:50:ILE:HG22	1:D:118:ARG:HG2	1.86	0.57
1:C:273:LYS:N	1:C:273:LYS:CD	2.68	0.57
1:B:169:TRP:HB3	1:B:170:PRO:HD3	1.87	0.56

Continued on next page...

Continued from previous page...

Atom-1	Atom-2	Interatomic distance (Å)	Clash overlap (Å)
1:D:200:ARG:NH1	3:D:1275:FAD:N3A	2.54	0.56
1:D:221:TYR:CB	1:D:273:LYS:HB2	2.34	0.56
1:C:271:ALA:CA	1:C:273:LYS:HE2	2.36	0.56
1:B:273:LYS:NZ	1:B:273:LYS:HB3	2.21	0.56
1:A:14:ARG:CD	1:A:14:ARG:H	2.18	0.55
1:A:148:THR:HG21	1:A:190:TYR:HD1	1.70	0.55
1:A:47:ASN:ND2	1:A:49:ILE:H	2.04	0.55
1:C:221:TYR:HB2	1:C:273:LYS:NZ	2.22	0.55
1:B:26:ALA:O	1:B:30:LYS:HG3	2.06	0.55
1:C:91:LEU:HD11	1:C:120:PHE:HE1	1.72	0.55
1:A:238:MET:HE1	1:A:243:GLN:HA	1.89	0.54
1:B:1:ALA:HA	1:B:215:TRP:CD1	2.41	0.54
1:C:169:TRP:CZ2	1:C:256:GLY:HA3	2.42	0.54
1:A:160:ILE:CG1	1:C:236:PHE:HB3	2.37	0.54
1:C:172:GLN:NE2	4:C:2096:HOH:O	2.39	0.54
1:B:130:ALA:HA	1:B:134:LYS:HE3	1.89	0.54
1:D:25:ALA:O	1:D:29:LEU:HD13	2.07	0.54
1:D:88:GLN:O	1:D:92:GLU:HG3	2.06	0.54
1:A:67:TYR:HB3	1:A:68:PRO:HD3	1.89	0.54
1:D:221:TYR:HB3	1:D:273:LYS:HB2	1.89	0.54
1:B:231:ASN:ND2	1:B:233:GLN:HB3	2.21	0.54
1:C:4:ARG:HG2	1:C:4:ARG:HH11	1.72	0.54
1:C:272:ARG:HG2	1:C:272:ARG:HH11	1.73	0.54
1:A:148:THR:OG1	3:A:1275:FAD:O2	2.27	0.53
1:A:233:GLN:HB3	4:A:2147:HOH:O	2.07	0.53
1:A:189:THR:HG23	4:A:2107:HOH:O	2.08	0.53
1:B:135:GLY:O	1:B:138:ARG:CG	2.51	0.53
1:B:237:LEU:HD21	1:D:153:SER:HB2	1.91	0.53
1:C:255:VAL:HG23	1:C:267:ASN:HD22	1.74	0.53
1:D:21:MET:HE2	1:D:204:LEU:HD23	1.89	0.53
1:C:138:ARG:HA	1:C:180:GLY:O	2.09	0.53
1:A:3:ARG:HB3	1:A:3:ARG:HH11	1.73	0.52
1:A:4:ARG:HD3	1:A:93:ALA:O	2.09	0.52
1:C:31:LYS:NZ	1:C:208:LYS:NZ	2.57	0.52
1:B:47:ASN:ND2	1:B:49:ILE:H	2.07	0.52
1:D:231:ASN:OD1	1:D:233:GLN:HB3	2.09	0.52
1:B:23:GLU:HA	1:B:23:GLU:OE1	2.10	0.52
1:A:4:ARG:HG2	1:A:35:GLU:OE1	2.10	0.52
1:D:23:GLU:HG2	4:D:2027:HOH:O	2.10	0.52
1:C:143:VAL:CG2	1:C:184:LEU:HD12	2.40	0.51
1:A:14:ARG:H	1:A:14:ARG:HD2	1.76	0.51

Continued on next page...

Continued from previous page...

Atom-1	Atom-2	Interatomic distance (Å)	Clash overlap (Å)
1:A:200:ARG:NH1	3:A:1275:FAD:H1B	2.26	0.51
1:B:155:TYR:HB3	1:B:164:MET:HB2	1.93	0.51
4:B:2008:HOH:O	1:D:52:ARG:HD3	2.11	0.51
1:B:67:TYR:HB3	1:B:68:PRO:HD3	1.93	0.51
1:D:214:ILE:HD12	1:D:217:GLU:OE2	2.11	0.51
1:D:1:ALA:HA	1:D:215:TRP:NE1	2.26	0.50
1:B:117:GLU:HG2	3:D:1275:FAD:HM73	1.93	0.50
1:C:246:GLU:HG3	4:C:2119:HOH:O	2.11	0.50
1:A:197:ALA:O	1:A:201:ILE:HG12	2.11	0.50
1:C:76:LYS:HE2	1:C:123:GLU:OE2	2.12	0.50
1:A:50:ILE:HG12	1:A:67:TYR:CZ	2.46	0.50
1:B:112:LEU:HD22	1:B:116:PHE:CE2	2.46	0.50
1:B:221:TYR:HB3	1:B:273:LYS:HD3	1.92	0.50
1:B:231:ASN:ND2	1:B:234:ALA:N	2.60	0.50
1:C:158:GLN:H	1:C:158:GLN:NE2	2.09	0.49
1:C:233:GLN:HA	1:C:233:GLN:HE21	1.77	0.49
1:C:233:GLN:HA	1:C:233:GLN:NE2	2.26	0.49
1:A:198:ASP:O	1:A:202:GLN:HG2	2.12	0.49
1:C:14:ARG:HG2	1:C:19:TYR:CE1	2.47	0.49
1:B:27:ALA:O	1:B:31:LYS:HG3	2.12	0.49
1:C:89:LYS:HG3	4:C:2056:HOH:O	2.12	0.49
1:B:77:GLU:OE1	1:B:79:HIS:HE1	1.95	0.49
1:B:185:GLU:HG3	4:B:2170:HOH:O	2.13	0.49
1:C:77:GLU:HB3	1:C:79:HIS:CD2	2.48	0.49
1:B:139:SER:HB2	4:B:2123:HOH:O	2.13	0.49
1:C:273:LYS:HZ2	1:C:273:LYS:CA	2.24	0.49
1:B:88:GLN:O	1:B:92:GLU:HG3	2.11	0.49
1:A:14:ARG:HD2	1:A:14:ARG:N	2.28	0.49
1:A:1:ALA:HA	1:A:215:TRP:NE1	2.29	0.48
1:A:255:VAL:HG23	1:A:267:ASN:HD22	1.79	0.48
1:B:133:ASP:OD2	1:B:134:LYS:HG3	2.13	0.48
1:D:78:GLY:HA2	4:D:2087:HOH:O	2.13	0.48
1:A:77:GLU:HB2	1:A:79:HIS:CE1	2.49	0.47
1:A:3:ARG:HA	1:A:3:ARG:NH1	2.29	0.47
1:C:31:LYS:HZ1	1:C:208:LYS:NZ	2.13	0.47
1:D:224:PRO:HD2	1:D:227:LEU:CD1	2.45	0.47
1:A:14:ARG:H	1:A:14:ARG:NE	2.13	0.47
1:A:169:TRP:CZ2	1:A:256:GLY:HA3	2.50	0.47
1:C:72:VAL:CG1	1:C:76:LYS:HE3	2.45	0.47
1:C:128:TYR:OH	2:C:1274:RH1:H112	2.15	0.47
1:B:169:TRP:CZ2	1:B:256:GLY:HA3	2.50	0.47

Continued on next page...

Continued from previous page...

Atom-1	Atom-2	Interatomic distance (Å)	Clash overlap (Å)
1:C:23:GLU:OE1	1:C:23:GLU:HA	2.14	0.47
1:C:185:GLU:OE2	1:C:270:LYS:HA	2.15	0.47
1:A:204:LEU:O	1:A:208:LYS:HG3	2.15	0.46
1:B:29:LEU:CD1	1:B:211:LEU:HB3	2.45	0.46
1:C:1:ALA:HA	1:C:215:TRP:CD1	2.50	0.46
1:C:196:PRO:HB2	1:C:198:ASP:OD1	2.16	0.46
1:D:240:LYS:HD2	4:D:2170:HOH:O	2.16	0.46
1:A:134:LYS:HE3	1:A:134:LYS:HB2	1.62	0.46
1:A:160:ILE:HG23	1:C:228:PHE:CG	2.51	0.46
1:A:50:ILE:CD1	1:A:117:GLU:HB3	2.41	0.45
1:C:271:ALA:O	1:C:272:ARG:CB	2.64	0.45
1:D:4:ARG:HG2	4:D:2009:HOH:O	2.16	0.45
1:A:141:LYS:HD3	1:A:184:LEU:HD21	1.98	0.45
1:D:248:ASN:HB3	4:D:2173:HOH:O	2.17	0.45
1:D:138:ARG:NH1	4:D:2123:HOH:O	2.39	0.45
1:A:160:ILE:H	1:A:160:ILE:HG13	1.57	0.45
1:C:185:GLU:OE2	1:C:271:ALA:N	2.41	0.45
1:C:239:LYS:HB2	1:C:242:VAL:HG23	1.98	0.45
1:B:132:TYR:HA	1:B:177:HIS:O	2.17	0.45
1:D:79:HIS:HD2	4:D:2089:HOH:O	1.98	0.45
1:D:132:TYR:O	1:D:180:GLY:HA2	2.16	0.45
1:A:160:ILE:HG13	1:C:236:PHE:HB3	1.99	0.45
1:A:231:ASN:OD1	1:A:233:GLN:HG3	2.17	0.45
1:A:163:ASP:OD2	1:A:165:ASN:HB2	2.17	0.44
1:C:231:ASN:OD1	1:C:233:GLN:HB3	2.17	0.44
1:D:58:LYS:NZ	1:D:58:LYS:CB	2.80	0.44
1:A:4:ARG:HG2	1:A:35:GLU:CD	2.37	0.44
1:B:29:LEU:HD11	1:B:211:LEU:HB3	1.99	0.44
1:A:3:ARG:HB3	1:A:3:ARG:NH1	2.33	0.44
1:A:60:LYS:HE2	1:A:73:LEU:CD2	2.47	0.44
1:B:68:PRO:O	1:B:72:VAL:HG23	2.16	0.44
1:D:52:ARG:HG2	1:D:52:ARG:H	1.58	0.44
1:B:47:ASN:HB3	1:B:118:ARG:NH2	2.33	0.44
1:A:273:LYS:HD3	4:A:2163:HOH:O	2.18	0.44
1:B:50:ILE:CD1	1:B:117:GLU:HB3	2.34	0.44
1:D:239:LYS:HB2	1:D:242:VAL:HG23	1.99	0.44
1:C:9:LEU:HD22	1:C:22:LYS:HD3	2.00	0.44
1:C:87:GLU:HG2	4:C:2055:HOH:O	2.18	0.44
1:C:158:GLN:NE2	1:C:158:GLN:N	2.66	0.43
1:D:254:SER:HB2	1:D:267:ASN:HD21	1.83	0.43
1:B:46:PHE:O	1:B:48:PRO:HD3	2.17	0.43

Continued on next page...

Continued from previous page...

Atom-1	Atom-2	Interatomic distance (Å)	Clash overlap (Å)
1:A:166:VAL:HG13	1:C:166:VAL:HG13	2.00	0.43
1:D:151:SER:H	1:D:154:MET:CE	2.31	0.43
1:A:214:ILE:HG23	1:A:215:TRP:N	2.34	0.43
1:B:267:ASN:HB2	1:B:273:LYS:HE3	2.00	0.43
1:C:72:VAL:HG12	1:C:76:LYS:HE3	2.00	0.43
1:B:221:TYR:CG	1:B:273:LYS:HB2	2.53	0.43
1:D:209:LYS:HE2	1:D:209:LYS:HB3	1.78	0.43
1:A:89:LYS:HD2	4:A:2079:HOH:O	2.17	0.43
1:C:151:SER:HA	1:C:191:SER:HB2	2.01	0.43
1:C:231:ASN:OD1	1:C:234:ALA:N	2.43	0.43
1:A:58:LYS:HA	1:A:58:LYS:CE	2.39	0.43
1:A:185:GLU:HG3	4:A:2139:HOH:O	2.19	0.43
1:B:197:ALA:O	1:B:201:ILE:HG12	2.18	0.43
1:D:7:ILE:HG21	1:D:22:LYS:HG2	2.00	0.42
1:C:4:ARG:HH11	1:C:4:ARG:CG	2.33	0.42
1:A:148:THR:HG21	1:A:190:TYR:CD1	2.52	0.42
1:B:48:PRO:HG3	1:D:49:ILE:HD11	2.02	0.42
1:B:221:TYR:HB2	1:B:273:LYS:HB2	2.00	0.42
1:C:195:THR:HG22	1:C:199:ALA:HB3	2.01	0.42
1:D:138:ARG:HA	1:D:180:GLY:O	2.19	0.42
1:B:116:PHE:O	1:B:120:PHE:HB2	2.20	0.42
1:B:273:LYS:CD	4:B:2191:HOH:O	2.67	0.42
1:A:14:ARG:CD	1:A:14:ARG:N	2.81	0.42
1:A:221:TYR:CD2	1:A:273:LYS:HG2	2.55	0.42
2:B:1274:RH1:H112	1:D:149:GLY:HA3	2.02	0.42
1:B:52:ARG:HG2	4:B:2049:HOH:O	2.20	0.41
1:C:209:LYS:HD2	1:C:209:LYS:C	2.40	0.41
1:D:71:SER:HB2	1:D:121:ILE:HD12	2.01	0.41
1:A:169:TRP:HB3	1:A:170:PRO:HD3	2.03	0.41
1:C:116:PHE:O	1:C:120:PHE:HB2	2.20	0.41
1:C:122:GLY:O	1:C:123:GLU:CB	2.67	0.41
1:C:238:MET:HE3	1:C:243:GLN:HA	2.02	0.41
1:D:158:GLN:HE21	1:D:158:GLN:HB2	1.67	0.41
1:A:171:ILE:HD12	1:A:171:ILE:N	2.34	0.41
1:C:60:LYS:HE3	1:C:73:LEU:HD22	2.02	0.41
1:C:221:TYR:HB2	1:C:273:LYS:CE	2.51	0.41
1:D:91:LEU:HD11	1:D:120:PHE:HE1	1.86	0.41
1:B:132:TYR:CD1	1:B:178:PHE:HA	2.56	0.41
1:A:143:VAL:HG22	1:A:184:LEU:HD12	2.02	0.41
1:B:267:ASN:CB	1:B:273:LYS:HE3	2.51	0.41
1:B:273:LYS:HB3	1:B:273:LYS:HZ2	1.86	0.41

Continued on next page...

Continued from previous page...

Atom-1	Atom-2	Interatomic distance (Å)	Clash overlap (Å)
2:D:1274:RH1:H102	2:D:1274:RH1:O2	2.21	0.41
1:B:273:LYS:NZ	4:B:2193:HOH:O	2.54	0.41
1:D:132:TYR:HA	1:D:177:HIS:O	2.21	0.40
1:D:155:TYR:HB3	1:D:164:MET:HB2	2.03	0.40
1:B:31:LYS:HG3	4:B:2023:HOH:O	2.20	0.40
1:B:221:TYR:HB3	1:B:273:LYS:HB2	2.02	0.40
1:B:264:PRO:HB2	1:B:273:LYS:CE	2.52	0.40
1:C:273:LYS:NZ	1:C:273:LYS:CA	2.83	0.40
1:D:229:ASP:O	1:D:236:PHE:HA	2.22	0.40
1:B:254:SER:HB2	1:B:267:ASN:ND2	2.35	0.40
1:C:31:LYS:HZ2	1:C:208:LYS:CE	2.35	0.40
1:A:52:ARG:H	1:A:52:ARG:HG2	1.75	0.40
1:B:37:VAL:HG12	1:B:38:GLU:N	2.37	0.40
1:B:52:ARG:HG2	1:B:52:ARG:H	1.64	0.40
1:C:17:PHE:CB	3:C:1275:FAD:H52A	2.39	0.40
1:C:243:GLN:O	1:C:247:LYS:HG3	2.21	0.40

There are no symmetry-related clashes.

5.3 Torsion angles [i](#)

5.3.1 Protein backbone [i](#)

In the following table, the Percentiles column shows the percent Ramachandran outliers of the chain as a percentile score with respect to all X-ray entries followed by that with respect to entries of similar resolution.

The Analysed column shows the number of residues for which the backbone conformation was analysed, and the total number of residues.

Mol	Chain	Analysed	Favoured	Allowed	Outliers	Percentiles	
1	A	271/273 (99%)	257 (95%)	14 (5%)	0	100	100
1	B	271/273 (99%)	258 (95%)	13 (5%)	0	100	100
1	C	271/273 (99%)	254 (94%)	16 (6%)	1 (0%)	34	30
1	D	271/273 (99%)	260 (96%)	10 (4%)	1 (0%)	34	30
All	All	1084/1092 (99%)	1029 (95%)	53 (5%)	2 (0%)	47	44

All (2) Ramachandran outliers are listed below:

Mol	Chain	Res	Type
1	D	272	ARG
1	C	271	ALA

5.3.2 Protein sidechains [i](#)

In the following table, the Percentiles column shows the percent sidechain outliers of the chain as a percentile score with respect to all X-ray entries followed by that with respect to entries of similar resolution.

The Analysed column shows the number of residues for which the sidechain conformation was analysed, and the total number of residues.

Mol	Chain	Analysed	Rotameric	Outliers	Percentiles	
1	A	226/226 (100%)	217 (96%)	9 (4%)	31	29
1	B	226/226 (100%)	215 (95%)	11 (5%)	25	21
1	C	226/226 (100%)	215 (95%)	11 (5%)	25	21
1	D	226/226 (100%)	213 (94%)	13 (6%)	20	15
All	All	904/904 (100%)	860 (95%)	44 (5%)	25	21

All (44) residues with a non-rotameric sidechain are listed below:

Mol	Chain	Res	Type
1	A	3	ARG
1	A	14	ARG
1	A	29	LEU
1	A	50	ILE
1	A	112	LEU
1	A	158	GLN
1	A	160	ILE
1	A	189	THR
1	A	241	GLU
1	B	14	ARG
1	B	22	LYS
1	B	32	LYS
1	B	47	ASN
1	B	50	ILE
1	B	112	LEU
1	B	123	GLU
1	B	158	GLN
1	B	160	ILE
1	B	198	ASP
1	B	248	ASN

Continued on next page...

Continued from previous page...

Mol	Chain	Res	Type
1	C	29	LEU
1	C	47	ASN
1	C	77	GLU
1	C	133	ASP
1	C	158	GLN
1	C	189	THR
1	C	191	SER
1	C	202	GLN
1	C	209	LYS
1	C	218	THR
1	C	273	LYS
1	D	3	ARG
1	D	14	ARG
1	D	22	LYS
1	D	32	LYS
1	D	52	ARG
1	D	58	LYS
1	D	60	LYS
1	D	158	GLN
1	D	189	THR
1	D	200	ARG
1	D	233	GLN
1	D	240	LYS
1	D	273	LYS

Sometimes sidechains can be flipped to improve hydrogen bonding and reduce clashes. All (29) such sidechains are listed below:

Mol	Chain	Res	Type
1	A	47	ASN
1	A	172	GLN
1	A	194	HIS
1	A	267	ASN
1	A	268	GLN
1	B	47	ASN
1	B	79	HIS
1	B	158	GLN
1	B	172	GLN
1	B	202	GLN
1	B	231	ASN
1	B	267	ASN
1	B	268	GLN
1	C	47	ASN

Continued on next page...

Continued from previous page...

Mol	Chain	Res	Type
1	C	64	ASN
1	C	158	GLN
1	C	172	GLN
1	C	182	GLN
1	C	233	GLN
1	C	267	ASN
1	C	268	GLN
1	D	45	ASN
1	D	47	ASN
1	D	79	HIS
1	D	158	GLN
1	D	172	GLN
1	D	233	GLN
1	D	267	ASN
1	D	268	GLN

5.3.3 RNA [i](#)

There are no RNA molecules in this entry.

5.4 Non-standard residues in protein, DNA, RNA chains [i](#)

There are no non-standard protein/DNA/RNA residues in this entry.

5.5 Carbohydrates [i](#)

There are no monosaccharides in this entry.

5.6 Ligand geometry [i](#)

8 ligands are modelled in this entry.

In the following table, the Counts columns list the number of bonds (or angles) for which Mogul statistics could be retrieved, the number of bonds (or angles) that are observed in the model and the number of bonds (or angles) that are defined in the Chemical Component Dictionary. The Link column lists molecule types, if any, to which the group is linked. The Z score for a bond length (or angle) is the number of standard deviations the observed value is removed from the expected value. A bond length (or angle) with $|Z| > 2$ is considered an outlier worth inspection. RMSZ is the root-mean-square of all Z scores of the bond lengths (or angles).

Mol	Type	Chain	Res	Link	Bond lengths			Bond angles		
					Counts	RMSZ	# Z > 2	Counts	RMSZ	# Z > 2
2	RH1	A	1274	-	18,19,19	0.98	1 (5%)	21,29,29	1.69	5 (23%)
2	RH1	C	1274	-	18,19,19	0.99	1 (5%)	21,29,29	1.66	5 (23%)
3	FAD	A	1275	-	54,58,58	2.84	19 (35%)	71,89,89	1.29	9 (12%)
3	FAD	B	1275	-	54,58,58	2.72	20 (37%)	71,89,89	1.26	8 (11%)
3	FAD	D	1275	-	54,58,58	2.70	19 (35%)	71,89,89	1.27	7 (9%)
2	RH1	B	1274	-	18,19,19	0.97	1 (5%)	21,29,29	1.74	5 (23%)
2	RH1	D	1274	-	18,19,19	0.98	1 (5%)	21,29,29	1.73	4 (19%)
3	FAD	C	1275	-	54,58,58	2.70	19 (35%)	71,89,89	1.32	10 (14%)

In the following table, the Chirals column lists the number of chiral outliers, the number of chiral centers analysed, the number of these observed in the model and the number defined in the Chemical Component Dictionary. Similar counts are reported in the Torsion and Rings columns. '-' means no outliers of that kind were identified.

Mol	Type	Chain	Res	Link	Chirals	Torsions	Rings
2	RH1	A	1274	-	-	6/6/38/38	0/3/3/3
2	RH1	C	1274	-	-	4/6/38/38	0/3/3/3
3	FAD	A	1275	-	-	4/30/50/50	0/6/6/6
3	FAD	B	1275	-	-	3/30/50/50	0/6/6/6
3	FAD	D	1275	-	-	3/30/50/50	0/6/6/6
2	RH1	B	1274	-	-	4/6/38/38	0/3/3/3
2	RH1	D	1274	-	-	4/6/38/38	0/3/3/3
3	FAD	C	1275	-	-	3/30/50/50	0/6/6/6

All (81) bond length outliers are listed below:

Mol	Chain	Res	Type	Atoms	Z	Observed(Å)	Ideal(Å)
3	A	1275	FAD	P-O3P	-13.47	1.45	1.59
3	D	1275	FAD	P-O3P	-12.97	1.45	1.59
3	B	1275	FAD	P-O3P	-12.72	1.45	1.59
3	C	1275	FAD	P-O3P	-11.35	1.47	1.59
3	C	1275	FAD	PA-O3P	6.94	1.67	1.59
3	A	1275	FAD	O4B-C1B	6.15	1.49	1.40
3	A	1275	FAD	PA-O3P	5.52	1.65	1.59
3	D	1275	FAD	O4B-C1B	5.35	1.47	1.40
3	C	1275	FAD	O4B-C1B	5.33	1.47	1.40
3	B	1275	FAD	PA-O3P	4.96	1.64	1.59
3	B	1275	FAD	O4B-C1B	4.86	1.47	1.40
3	C	1275	FAD	PA-O2A	-4.42	1.34	1.55

Continued on next page...

Continued from previous page...

Mol	Chain	Res	Type	Atoms	Z	Observed(Å)	Ideal(Å)
3	A	1275	FAD	PA-O2A	-4.41	1.34	1.55
3	D	1275	FAD	PA-O2A	-4.41	1.34	1.55
3	B	1275	FAD	PA-O2A	-4.38	1.35	1.55
3	A	1275	FAD	C9A-N10	4.14	1.48	1.41
3	B	1275	FAD	P-O2P	-4.01	1.36	1.55
3	D	1275	FAD	PA-O3P	3.98	1.63	1.59
3	A	1275	FAD	P-O2P	-3.97	1.37	1.55
3	D	1275	FAD	C9A-N10	3.91	1.47	1.41
3	C	1275	FAD	C9A-N10	3.87	1.47	1.41
3	C	1275	FAD	P-O2P	-3.76	1.37	1.55
3	D	1275	FAD	O5'-C5'	3.75	1.58	1.44
3	D	1275	FAD	P-O2P	-3.71	1.38	1.55
3	C	1275	FAD	C4X-N5	3.58	1.38	1.30
3	B	1275	FAD	C9A-N10	3.44	1.47	1.41
3	A	1275	FAD	O5'-C5'	3.43	1.57	1.44
3	D	1275	FAD	C4X-N5	3.39	1.38	1.30
3	B	1275	FAD	C4X-N5	3.38	1.38	1.30
3	B	1275	FAD	O5'-C5'	3.31	1.57	1.44
3	A	1275	FAD	C4X-N5	3.29	1.37	1.30
3	D	1275	FAD	C1'-C2'	3.25	1.57	1.52
3	C	1275	FAD	C8-C7	3.21	1.48	1.40
3	C	1275	FAD	C6-C5X	3.21	1.44	1.40
3	C	1275	FAD	O5'-C5'	3.20	1.56	1.44
3	B	1275	FAD	C8-C7	3.17	1.48	1.40
3	A	1275	FAD	C9A-C5X	3.16	1.46	1.41
3	C	1275	FAD	C9A-C5X	3.13	1.46	1.41
3	A	1275	FAD	C6-C5X	3.10	1.44	1.40
3	B	1275	FAD	C6-C5X	3.01	1.44	1.40
3	A	1275	FAD	C1'-C2'	2.97	1.56	1.52
3	D	1275	FAD	C6-C5X	2.94	1.44	1.40
3	C	1275	FAD	C2-N3	2.86	1.45	1.39
3	B	1275	FAD	C9A-C5X	2.85	1.45	1.41
3	B	1275	FAD	C2A-N1A	2.85	1.39	1.33
3	B	1275	FAD	C4A-N3A	2.84	1.39	1.35
3	A	1275	FAD	C8-C7	2.78	1.47	1.40
3	A	1275	FAD	PA-O5B	-2.77	1.48	1.59
3	C	1275	FAD	C4A-N3A	2.76	1.39	1.35
3	D	1275	FAD	C8-C7	2.75	1.47	1.40
3	B	1275	FAD	C2-N3	2.65	1.44	1.39
3	D	1275	FAD	C9A-C5X	2.64	1.45	1.41
3	C	1275	FAD	C10-N1	2.63	1.38	1.33
3	B	1275	FAD	C2A-N3A	2.60	1.36	1.32

Continued on next page...

Continued from previous page...

Mol	Chain	Res	Type	Atoms	Z	Observed(Å)	Ideal(Å)
3	D	1275	FAD	C2A-N3A	2.57	1.36	1.32
3	C	1275	FAD	C9-C9A	2.53	1.43	1.39
3	C	1275	FAD	PA-O5B	-2.50	1.49	1.59
3	A	1275	FAD	C4A-N3A	2.48	1.39	1.35
3	B	1275	FAD	C5B-C4B	2.47	1.59	1.51
3	D	1275	FAD	C5B-C4B	2.46	1.59	1.51
3	D	1275	FAD	C2-N3	2.44	1.44	1.39
3	A	1275	FAD	C10-N1	2.44	1.38	1.33
3	B	1275	FAD	C10-N1	2.44	1.38	1.33
3	C	1275	FAD	C1'-C2'	2.40	1.56	1.52
3	A	1275	FAD	C2A-N1A	2.40	1.38	1.33
3	A	1275	FAD	C9-C9A	2.38	1.43	1.39
3	B	1275	FAD	C1'-C2'	2.37	1.56	1.52
3	D	1275	FAD	C10-N1	2.36	1.38	1.33
3	D	1275	FAD	C4A-N3A	2.28	1.38	1.35
2	C	1274	RH1	C3-C4	2.27	1.52	1.46
3	A	1275	FAD	C5B-C4B	2.25	1.58	1.51
3	B	1275	FAD	C9-C9A	2.25	1.43	1.39
2	A	1274	RH1	C3-C4	2.24	1.52	1.46
3	B	1275	FAD	PA-O5B	-2.23	1.50	1.59
2	D	1274	RH1	C3-C4	2.20	1.52	1.46
3	C	1275	FAD	C5B-C4B	2.20	1.58	1.51
2	B	1274	RH1	C3-C4	2.19	1.52	1.46
3	C	1275	FAD	C2A-N1A	2.17	1.37	1.33
3	D	1275	FAD	C2A-N1A	2.14	1.37	1.33
3	D	1275	FAD	PA-O5B	-2.06	1.51	1.59
3	A	1275	FAD	C2A-N3A	2.01	1.35	1.32

All (53) bond angle outliers are listed below:

Mol	Chain	Res	Type	Atoms	Z	Observed(°)	Ideal(°)
2	A	1274	RH1	C2-C1-C6	4.42	121.62	117.00
2	B	1274	RH1	C2-C1-C6	4.42	121.62	117.00
2	C	1274	RH1	C2-C1-C6	4.32	121.52	117.00
2	D	1274	RH1	C2-C1-C6	4.27	121.46	117.00
2	D	1274	RH1	C4-C5-N2	4.09	123.17	116.41
3	C	1275	FAD	O4B-C1B-N9A	-3.88	103.59	108.75
3	D	1275	FAD	O4B-C1B-N9A	-3.61	103.96	108.75
3	B	1275	FAD	O4B-C1B-N9A	-3.47	104.14	108.75
3	D	1275	FAD	O2P-P-O3P	-3.33	98.27	107.27
2	C	1274	RH1	C4-C5-N2	3.30	121.87	116.41
2	A	1274	RH1	C1-C2-N1	3.26	121.80	116.41

Continued on next page...

Continued from previous page...

Mol	Chain	Res	Type	Atoms	Z	Observed(°)	Ideal(°)
3	B	1275	FAD	O5B-PA-O1A	-3.23	96.12	108.94
3	C	1275	FAD	O5B-PA-O1A	-3.20	96.25	108.94
2	B	1274	RH1	C4-C5-N2	3.11	121.55	116.41
2	B	1274	RH1	C1-C2-N1	3.07	121.49	116.41
3	D	1275	FAD	O5B-PA-O1A	-3.06	96.81	108.94
3	C	1275	FAD	O2P-P-O3P	-3.06	99.01	107.27
3	A	1275	FAD	O5B-PA-O1A	-3.02	96.96	108.94
3	A	1275	FAD	O4B-C1B-N9A	-3.02	104.74	108.75
3	B	1275	FAD	O2P-P-O3P	-2.99	99.19	107.27
3	A	1275	FAD	O2P-P-O3P	-2.98	99.21	107.27
3	A	1275	FAD	C4B-O4B-C1B	-2.84	107.32	109.92
2	A	1274	RH1	C4-C5-N2	2.79	121.03	116.41
2	D	1274	RH1	C1-C2-N1	2.76	120.98	116.41
2	C	1274	RH1	C1-C2-N1	2.70	120.88	116.41
2	B	1274	RH1	C5-C4-C3	2.62	120.17	117.19
3	A	1275	FAD	C5'-C4'-C3'	-2.62	107.28	112.22
2	B	1274	RH1	O3-C11-C3	2.47	118.64	110.85
2	A	1274	RH1	C5-C4-C3	2.47	120.00	117.19
2	C	1274	RH1	C5-C4-C3	2.38	119.90	117.19
2	D	1274	RH1	C5-C4-C3	2.33	119.84	117.19
3	A	1275	FAD	C5A-C6A-N1A	-2.29	114.77	120.23
3	C	1275	FAD	C5'-C4'-C3'	-2.28	107.91	112.22
3	D	1275	FAD	C5A-C6A-N6A	2.21	123.69	120.31
3	D	1275	FAD	C4-N3-C2	-2.21	121.71	125.64
3	D	1275	FAD	C5A-C6A-N1A	-2.20	114.99	120.23
3	C	1275	FAD	C4-N3-C2	-2.19	121.76	125.64
3	A	1275	FAD	C5A-C6A-N6A	2.18	123.62	120.31
3	C	1275	FAD	N3A-C2A-N1A	-2.16	125.74	128.67
3	C	1275	FAD	C4A-C5A-N7A	2.14	111.60	109.34
3	B	1275	FAD	C5A-C6A-N1A	-2.14	115.13	120.23
3	B	1275	FAD	C5'-C4'-C3'	-2.11	108.23	112.22
3	C	1275	FAD	C5A-C6A-N1A	-2.11	115.20	120.23
2	A	1274	RH1	O3-C11-C3	2.11	117.47	110.85
2	C	1274	RH1	O3-C11-C3	2.10	117.46	110.85
3	B	1275	FAD	C5A-C6A-N6A	2.09	123.50	120.31
3	B	1275	FAD	C4B-O4B-C1B	-2.09	108.01	109.92
3	D	1275	FAD	N3A-C2A-N1A	-2.09	125.84	128.67
3	B	1275	FAD	C4-N3-C2	-2.07	121.96	125.64
3	C	1275	FAD	O5B-C5B-C4B	-2.05	102.00	108.99
3	A	1275	FAD	N3A-C2A-N1A	-2.03	125.92	128.67
3	C	1275	FAD	C4B-O4B-C1B	-2.02	108.08	109.92
3	A	1275	FAD	C4A-C5A-N7A	2.02	111.47	109.34

There are no chirality outliers.

All (31) torsion outliers are listed below:

Mol	Chain	Res	Type	Atoms
2	A	1274	RH1	C1-C2-N1-C7
2	A	1274	RH1	C1-C2-N1-C8
2	A	1274	RH1	C4-C5-N2-C9
2	A	1274	RH1	C4-C5-N2-C10
2	A	1274	RH1	O3-C11-C3-C2
2	A	1274	RH1	O3-C11-C3-C4
2	B	1274	RH1	C1-C2-N1-C7
2	B	1274	RH1	C1-C2-N1-C8
2	B	1274	RH1	C4-C5-N2-C9
2	B	1274	RH1	C4-C5-N2-C10
2	C	1274	RH1	C1-C2-N1-C7
2	C	1274	RH1	C1-C2-N1-C8
2	C	1274	RH1	C4-C5-N2-C9
2	C	1274	RH1	C4-C5-N2-C10
2	D	1274	RH1	C1-C2-N1-C7
2	D	1274	RH1	C1-C2-N1-C8
2	D	1274	RH1	C4-C5-N2-C9
2	D	1274	RH1	C4-C5-N2-C10
3	A	1275	FAD	P-O3P-PA-O5B
3	A	1275	FAD	PA-O3P-P-O5'
3	B	1275	FAD	P-O3P-PA-O5B
3	C	1275	FAD	P-O3P-PA-O5B
3	D	1275	FAD	P-O3P-PA-O5B
3	B	1275	FAD	C4'-C5'-O5'-P
3	C	1275	FAD	C4'-C5'-O5'-P
3	D	1275	FAD	C4'-C5'-O5'-P
3	A	1275	FAD	C4'-C5'-O5'-P
3	B	1275	FAD	PA-O3P-P-O5'
3	C	1275	FAD	PA-O3P-P-O5'
3	D	1275	FAD	PA-O3P-P-O5'
3	A	1275	FAD	P-O3P-PA-O2A

There are no ring outliers.

7 monomers are involved in 16 short contacts:

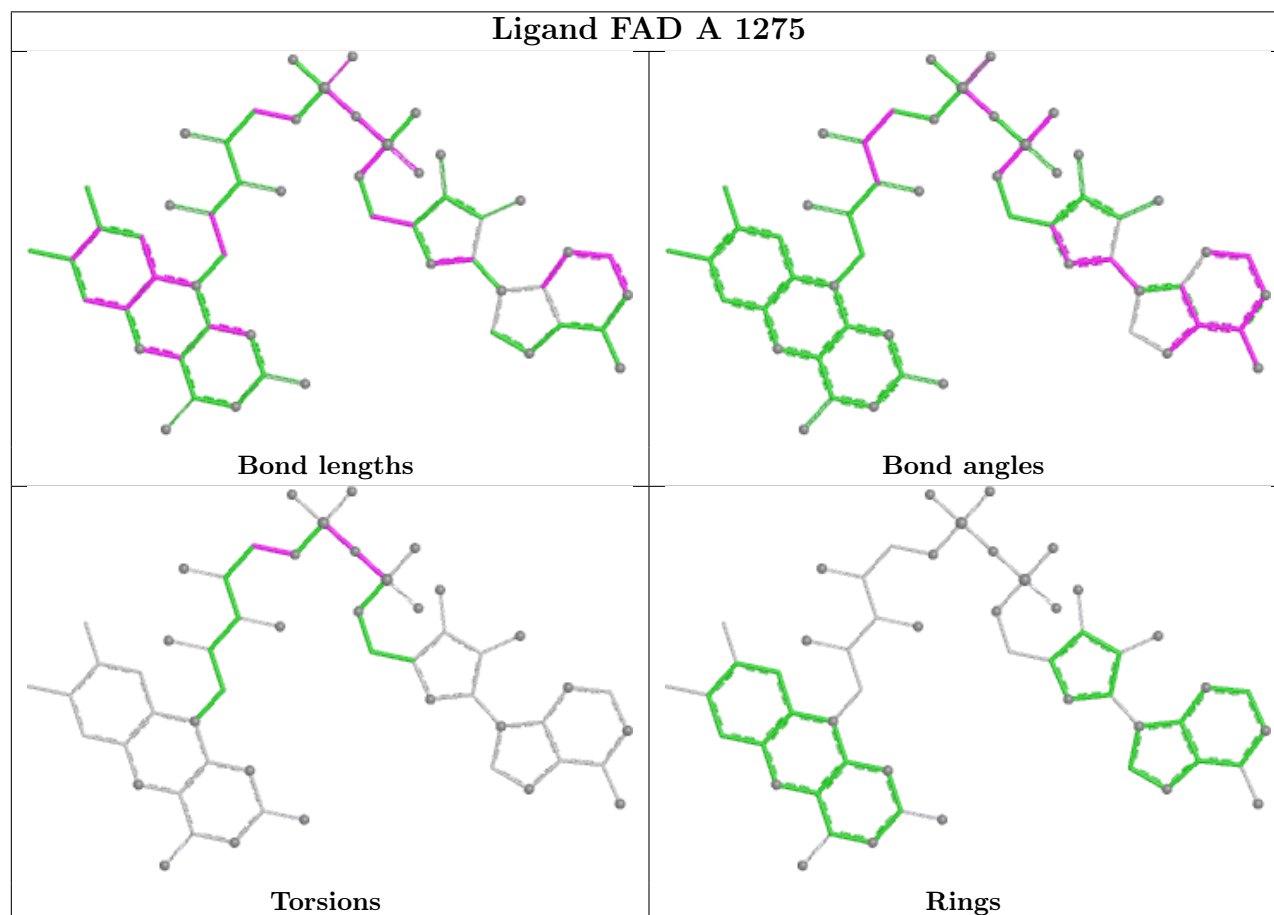
Mol	Chain	Res	Type	Clashes	Symm-Clashes
2	C	1274	RH1	1	0
3	A	1275	FAD	4	0
3	B	1275	FAD	2	0
3	D	1275	FAD	4	0

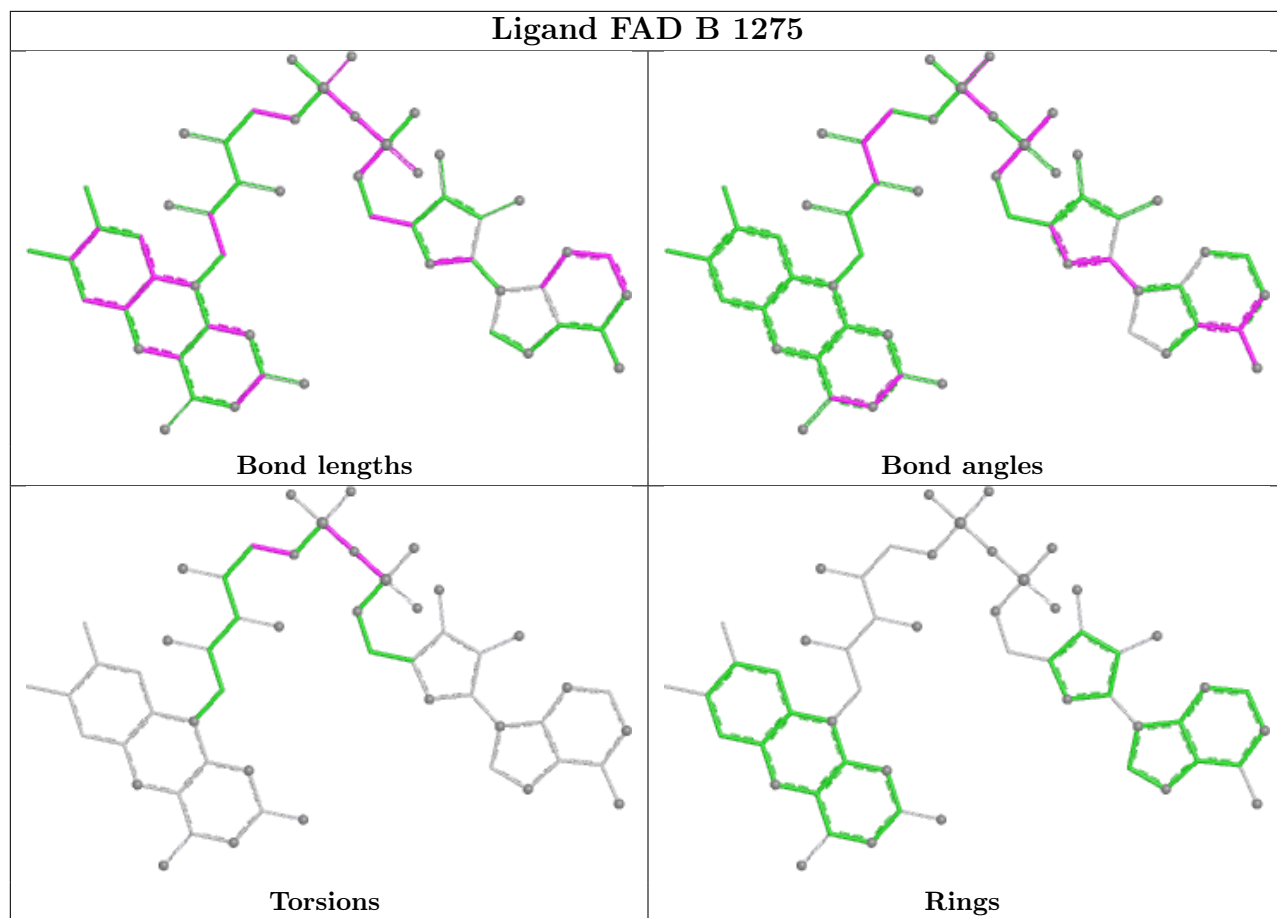
Continued on next page...

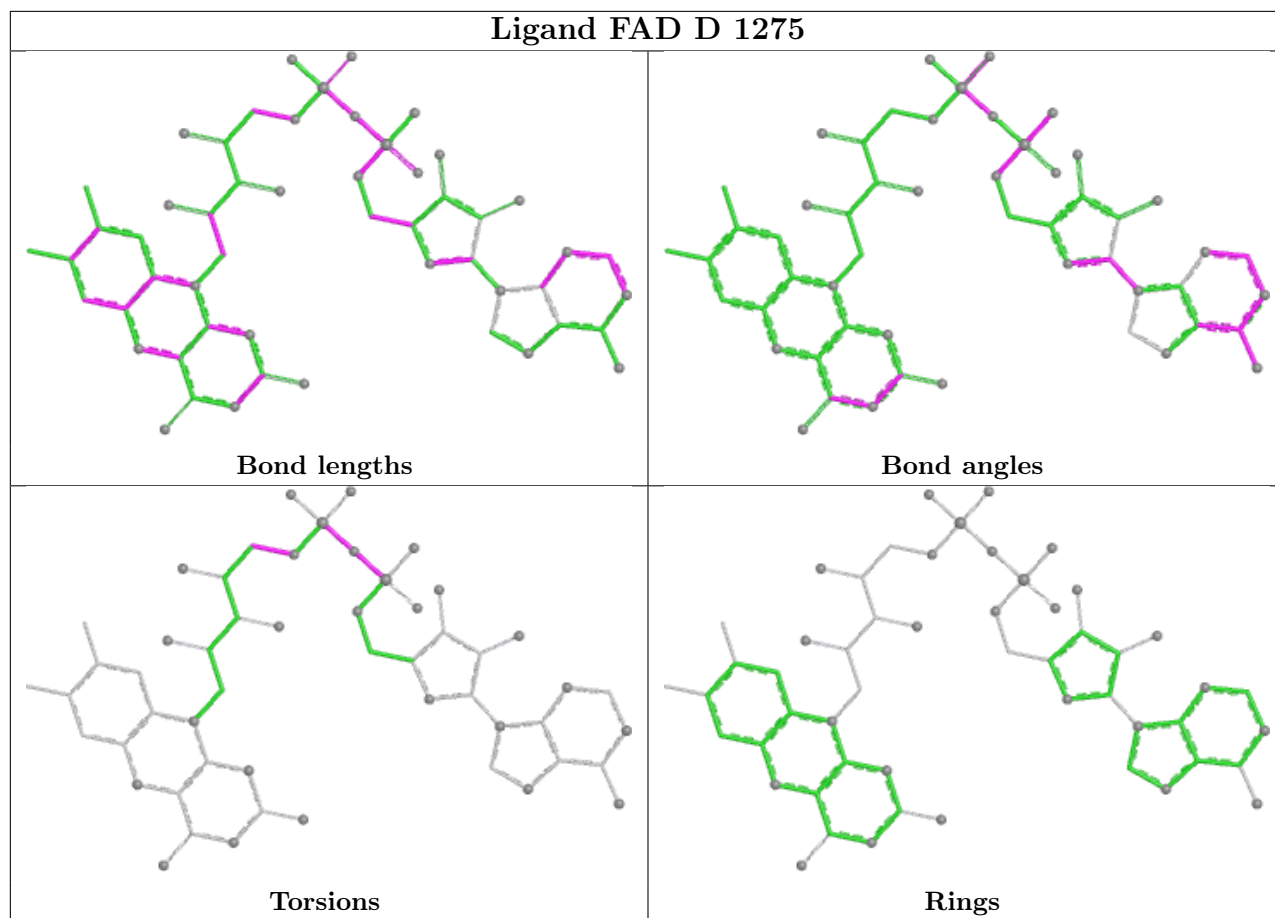
Continued from previous page...

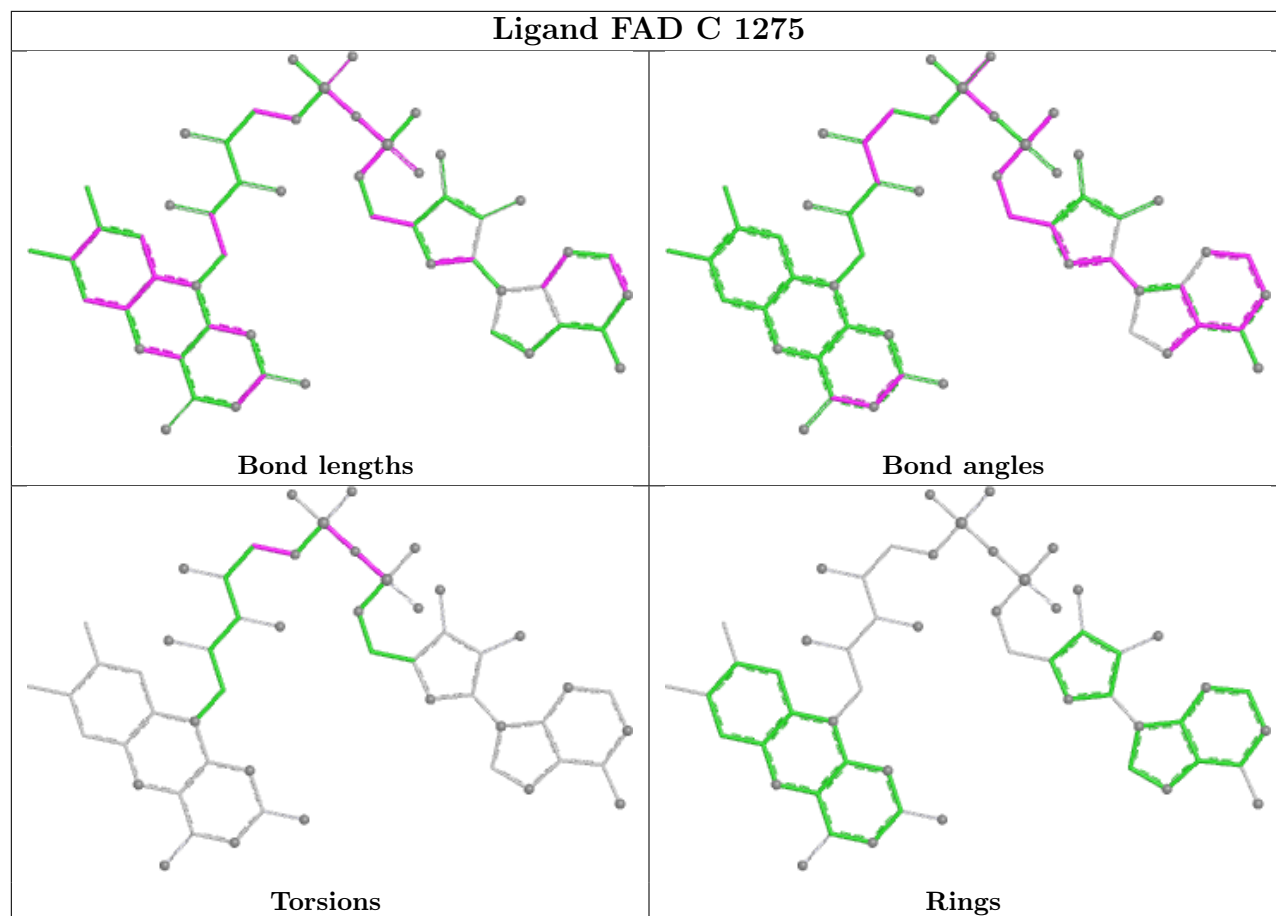
Mol	Chain	Res	Type	Clashes	Symm-Clashes
2	B	1274	RH1	1	0
2	D	1274	RH1	1	0
3	C	1275	FAD	3	0

The following is a two-dimensional graphical depiction of Mogul quality analysis of bond lengths, bond angles, torsion angles, and ring geometry for all instances of the Ligand of Interest. In addition, ligands with molecular weight > 250 and outliers as shown on the validation Tables will also be included. For torsion angles, if less than 5% of the Mogul distribution of torsion angles is within 10 degrees of the torsion angle in question, then that torsion angle is considered an outlier. Any bond that is central to one or more torsion angles identified as an outlier by Mogul will be highlighted in the graph. For rings, the root-mean-square deviation (RMSD) between the ring in question and similar rings identified by Mogul is calculated over all ring torsion angles. If the average RMSD is greater than 60 degrees and the minimal RMSD between the ring in question and any Mogul-identified rings is also greater than 60 degrees, then that ring is considered an outlier. The outliers are highlighted in purple. The color gray indicates Mogul did not find sufficient equivalents in the CSD to analyse the geometry.









5.7 Other polymers [i](#)

There are no such residues in this entry.

5.8 Polymer linkage issues [i](#)

There are no chain breaks in this entry.

6 Fit of model and data

6.1 Protein, DNA and RNA chains

EDS was not executed - this section is therefore empty.

6.2 Non-standard residues in protein, DNA, RNA chains

EDS was not executed - this section is therefore empty.

6.3 Carbohydrates

EDS was not executed - this section is therefore empty.

6.4 Ligands

EDS was not executed - this section is therefore empty.

6.5 Other polymers

EDS was not executed - this section is therefore empty.