



Full wwPDB X-ray Structure Validation Report ⓘ

Feb 21, 2018 – 08:02 pm GMT

PDB ID : 2HAI
Title : Crystal structure of HCV NS5B RNA polymerase in complex with novel class of dihydropyrone-containing inhibitor.
Authors : Li, H.; Love, R.L.
Deposited on : 2006-06-12
Resolution : 1.58 Å (reported)

This is a Full wwPDB X-ray Structure Validation Report for a publicly released PDB entry.

We welcome your comments at validation@mail.wwpdb.org

A user guide is available at

<https://www.wwpdb.org/validation/2017/XrayValidationReportHelp>

with specific help available everywhere you see the ⓘ symbol.

The following versions of software and data (see [references ⓘ](#)) were used in the production of this report:

MolProbity : 4.02b-467
Mogul : 1.7.3 (157068), CSD as539be (2018)
Xtrriage (Phenix) : **NOT EXECUTED**
EDS : **NOT EXECUTED**
Percentile statistics : 20171227.v01 (using entries in the PDB archive December 27th 2017)
Ideal geometry (proteins) : Engh & Huber (2001)
Ideal geometry (DNA, RNA) : Parkinson et al. (1996)
Validation Pipeline (wwPDB-VP) : trunk30686

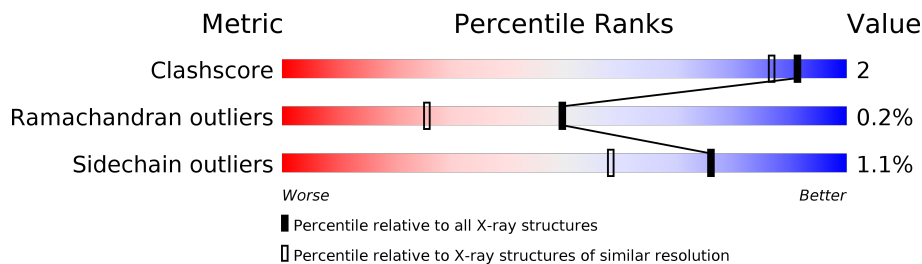
1 Overall quality at a glance

The following experimental techniques were used to determine the structure:

X-RAY DIFFRACTION

The reported resolution of this entry is 1.58 Å.

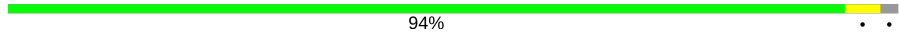
Percentile scores (ranging between 0-100) for global validation metrics of the entry are shown in the following graphic. The table shows the number of entries on which the scores are based.



Metric	Whole archive (#Entries)	Similar resolution (#Entries, resolution range(Å))
Clashscore	122078	4974 (1.60-1.56)
Ramachandran outliers	120005	4849 (1.60-1.56)
Sidechain outliers	119972	4846 (1.60-1.56)

The table below summarises the geometric issues observed across the polymeric chains and their fit to the electron density. The red, orange, yellow and green segments on the lower bar indicate the fraction of residues that contain outliers for ≥ 3 , 2, 1 and 0 types of geometric quality criteria. A grey segment represents the fraction of residues that are not modelled. The numeric value for each fraction is indicated below the corresponding segment, with a dot representing fractions $\leq 5\%$. The upper red bar (where present) indicates the fraction of residues that have poor fit to the electron density. The numeric value is given above the bar.

Note EDS was not executed.

Mol	Chain	Length	Quality of chain
1	A	576	 94%

2 Entry composition [i](#)

There are 3 unique types of molecules in this entry. The entry contains 4929 atoms, of which 0 are hydrogens and 0 are deuteriums.

In the tables below, the ZeroOcc column contains the number of atoms modelled with zero occupancy, the AltConf column contains the number of residues with at least one atom in alternate conformation and the Trace column contains the number of residues modelled with at most 2 atoms.

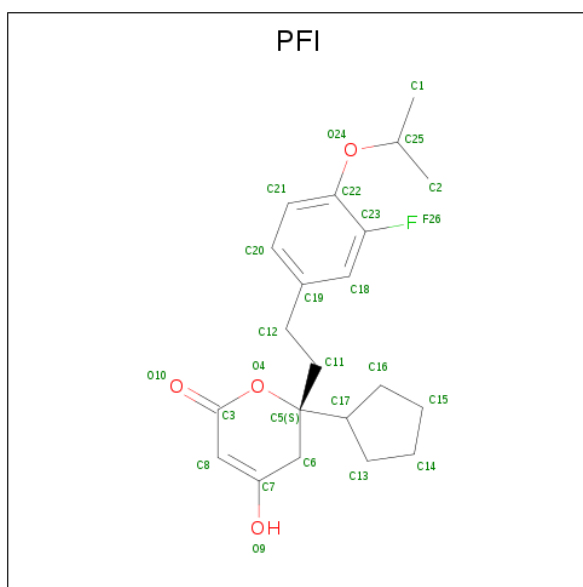
- Molecule 1 is a protein called HEPATITIS C VIRUS NS5B RNA POLYMERASE.

Mol	Chain	Residues	Atoms					ZeroOcc	AltConf	Trace
			Total	C	N	O	S			
1	A	562	4307	2716	747	811	33	0	1	0

There are 12 discrepancies between the modelled and reference sequences:

Chain	Residue	Modelled	Actual	Comment	Reference
A	47	GLN	LEU	ENGINEERED	UNP P26663
A	101	TYR	PHE	ENGINEERED	UNP P26663
A	114	ARG	LYS	ENGINEERED	UNP P26663
A	223	CSD	CYS	MODIFIED RESIDUE	UNP P26663
A	366	CME	CYS	MODIFIED RESIDUE	UNP P26663
A	544	GLN	ARG	CONFLICT	UNP P26663
A	571	HIS	-	EXPRESSION TAG	UNP P26663
A	572	HIS	-	EXPRESSION TAG	UNP P26663
A	573	HIS	-	EXPRESSION TAG	UNP P26663
A	574	HIS	-	EXPRESSION TAG	UNP P26663
A	575	HIS	-	EXPRESSION TAG	UNP P26663
A	576	HIS	-	EXPRESSION TAG	UNP P26663

- Molecule 2 is (6S)-6-CYCLOPENTYL-6-[2-(3-FLUORO-4-ISOPROPOXYPHENYL)ETHYL]-4-HYDROXY-5,6-DIHYDRO-2H-PYRAN-2-ONE (three-letter code: PFI) (formula: C₂₁H₂₇FO₄).



Mol	Chain	Residues	Atoms				ZeroOcc	AltConf
			Total	C	F	O		
2	A	1	26	21	1	4	0	0

- Molecule 3 is water.

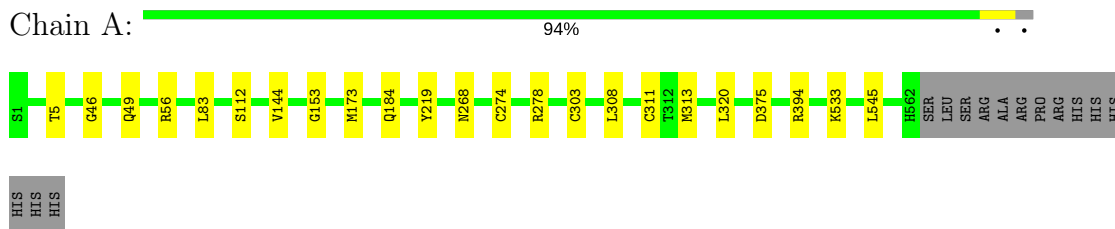
Mol	Chain	Residues	Atoms		ZeroOcc	AltConf
			Total	O		
3	A	596	596	596	0	0

3 Residue-property plots [i](#)

These plots are drawn for all protein, RNA and DNA chains in the entry. The first graphic for a chain summarises the proportions of the various outlier classes displayed in the second graphic. The second graphic shows the sequence view annotated by issues in geometry and electron density. Residues are color-coded according to the number of geometric quality criteria for which they contain at least one outlier: green = 0, yellow = 1, orange = 2 and red = 3 or more. A red dot above a residue indicates a poor fit to the electron density ($RSRZ > 2$). Stretches of 2 or more consecutive residues without any outlier are shown as a green connector. Residues present in the sample, but not in the model, are shown in grey.

Note EDS was not executed.

- Molecule 1: HEPATITIS C VIRUS NS5B RNA POLYMERASE



4 Data and refinement statistics

Xtriage (Phenix) and EDS were not executed - this section is therefore incomplete.

Property	Value	Source
Space group	P 41 21 2	Depositor
Cell constants a, b, c, α , β , γ	83.25Å 83.25Å 179.83Å 90.00° 90.00° 90.00°	Depositor
Resolution (Å)	22.00 – 1.58	Depositor
% Data completeness (in resolution range)	97.7 (22.00-1.58)	Depositor
R_{merge}	(Not available)	Depositor
R_{sym}	0.04	Depositor
Refinement program	REFMAC 5.2.0005	Depositor
R, R_{free}	0.215 , 0.236	Depositor
Estimated twinning fraction	No twinning to report.	Xtriage
Total number of atoms	4929	wwPDB-VP
Average B, all atoms (Å ²)	29.0	wwPDB-VP

5 Model quality [i](#)

5.1 Standard geometry [i](#)

Bond lengths and bond angles in the following residue types are not validated in this section: PFI, CSD, CME

The Z score for a bond length (or angle) is the number of standard deviations the observed value is removed from the expected value. A bond length (or angle) with $|Z| > 5$ is considered an outlier worth inspection. RMSZ is the root-mean-square of all Z scores of the bond lengths (or angles).

Mol	Chain	Bond lengths		Bond angles	
		RMSZ	# Z >5	RMSZ	# Z >5
1	A	0.37	0/4386	0.53	0/5967

There are no bond length outliers.

There are no bond angle outliers.

There are no chirality outliers.

There are no planarity outliers.

5.2 Too-close contacts [i](#)

In the following table, the Non-H and H(model) columns list the number of non-hydrogen atoms and hydrogen atoms in the chain respectively. The H(added) column lists the number of hydrogen atoms added and optimized by MolProbity. The Clashes column lists the number of clashes within the asymmetric unit, whereas Symm-Clashes lists symmetry related clashes.

Mol	Chain	Non-H	H(model)	H(added)	Clashes	Symm-Clashes
1	A	4307	0	4221	14	0
2	A	26	0	27	0	0
3	A	596	0	0	1	0
All	All	4929	0	4248	14	0

The all-atom clashscore is defined as the number of clashes found per 1000 atoms (including hydrogen atoms). The all-atom clashscore for this structure is 2.

All (14) close contacts within the same asymmetric unit are listed below, sorted by their clash magnitude.

Atom-1	Atom-2	Interatomic distance (Å)	Clash overlap (Å)
1:A:303[B]:CYS:SG	1:A:313:MET:CE	2.74	0.75

Continued on next page...

Continued from previous page...

Atom-1	Atom-2	Interatomic distance (Å)	Clash overlap (Å)
1:A:5:THR:HG23	1:A:278:ARG:HH12	1.55	0.71
1:A:46:GLY:HA2	1:A:49:GLN:HE21	1.69	0.57
1:A:303[B]:CYS:SG	1:A:313:MET:HE2	2.47	0.54
1:A:303[B]:CYS:SG	1:A:313:MET:HE1	2.49	0.53
1:A:303[B]:CYS:HG	1:A:311:CYS:CB	2.25	0.50
1:A:219:TYR:HB3	1:A:320:LEU:HD23	1.93	0.49
1:A:303[B]:CYS:HB3	1:A:311:CYS:SG	2.53	0.48
1:A:303[B]:CYS:SG	1:A:308:LEU:HD12	2.53	0.48
1:A:144:VAL:HB	1:A:394:ARG:HG2	1.97	0.46
1:A:268:ASN:HB3	1:A:274:CYS:SG	2.57	0.45
1:A:375:ASP:HB2	3:A:1048:HOH:O	2.17	0.44
1:A:83:LEU:HB2	1:A:173:MET:HA	2.00	0.44
1:A:303[B]:CYS:CB	1:A:311:CYS:SG	3.08	0.41

There are no symmetry-related clashes.

5.3 Torsion angles [i](#)

5.3.1 Protein backbone [i](#)

In the following table, the Percentiles column shows the percent Ramachandran outliers of the chain as a percentile score with respect to all X-ray entries followed by that with respect to entries of similar resolution.

The Analysed column shows the number of residues for which the backbone conformation was analysed, and the total number of residues.

Mol	Chain	Analysed	Favoured	Allowed	Outliers	Percentiles
1	A	559/576 (97%)	550 (98%)	8 (1%)	1 (0%)	49 25

All (1) Ramachandran outliers are listed below:

Mol	Chain	Res	Type
1	A	153	GLY

5.3.2 Protein sidechains [i](#)

In the following table, the Percentiles column shows the percent sidechain outliers of the chain as a percentile score with respect to all X-ray entries followed by that with respect to entries of similar resolution.

The Analysed column shows the number of residues for which the sidechain conformation was analysed, and the total number of residues.

Mol	Chain	Analysed	Rotameric	Outliers	Percentiles
1	A	456/489 (93%)	451 (99%)	5 (1%)	76 58

All (5) residues with a non-rotameric sidechain are listed below:

Mol	Chain	Res	Type
1	A	56	ARG
1	A	112	SER
1	A	184	GLN
1	A	533	LYS
1	A	545	LEU

Some sidechains can be flipped to improve hydrogen bonding and reduce clashes. All (5) such sidechains are listed below:

Mol	Chain	Res	Type
1	A	49	GLN
1	A	110	ASN
1	A	184	GLN
1	A	273	ASN
1	A	446	GLN

5.3.3 RNA ⓘ

There are no RNA molecules in this entry.

5.4 Non-standard residues in protein, DNA, RNA chains ⓘ

2 non-standard protein/DNA/RNA residues are modelled in this entry.

In the following table, the Counts columns list the number of bonds (or angles) for which Mogul statistics could be retrieved, the number of bonds (or angles) that are observed in the model and the number of bonds (or angles) that are defined in the Chemical Component Dictionary. The Link column lists molecule types, if any, to which the group is linked. The Z score for a bond length (or angle) is the number of standard deviations the observed value is removed from the expected value. A bond length (or angle) with $|Z| > 2$ is considered an outlier worth inspection. RMSZ is the root-mean-square of all Z scores of the bond lengths (or angles).

Mol	Type	Chain	Res	Link	Bond lengths			Bond angles		
					Counts	RMSZ	$\# Z > 2$	Counts	RMSZ	$\# Z > 2$
1	CSD	A	223	1	4,7,8	0.60	0	2,8,10	2.53	1 (50%)

Mol	Type	Chain	Res	Link	Bond lengths			Bond angles		
					Counts	RMSZ	# Z > 2	Counts	RMSZ	# Z > 2
1	CME	A	366	1	9,9,10	1.22	1 (11%)	6,9,11	2.12	2 (33%)

In the following table, the Chirals column lists the number of chiral outliers, the number of chiral centers analysed, the number of these observed in the model and the number defined in the Chemical Component Dictionary. Similar counts are reported in the Torsion and Rings columns. '-' means no outliers of that kind were identified.

Mol	Type	Chain	Res	Link	Chirals	Torsions	Rings
1	CSD	A	223	1	-	0/2/6/8	0/0/0/0
1	CME	A	366	1	-	0/5/8/10	0/0/0/0

All (1) bond length outliers are listed below:

Mol	Chain	Res	Type	Atoms	Z	Observed(Å)	Ideal(Å)
1	A	366	CME	OH-CZ	-2.59	1.28	1.42

All (3) bond angle outliers are listed below:

Mol	Chain	Res	Type	Atoms	Z	Observed(°)	Ideal(°)
1	A	366	CME	OH-CZ-CE	2.21	119.79	110.88
1	A	223	CSD	OD1-SG-CB	3.27	111.77	105.54
1	A	366	CME	CE-SD-SG	3.54	120.57	103.47

There are no chirality outliers.

There are no torsion outliers.

There are no ring outliers.

No monomer is involved in short contacts.

5.5 Carbohydrates [i](#)

There are no carbohydrates in this entry.

5.6 Ligand geometry [i](#)

1 ligand is modelled in this entry.

In the following table, the Counts columns list the number of bonds (or angles) for which Mogul statistics could be retrieved, the number of bonds (or angles) that are observed in the model and the number of bonds (or angles) that are defined in the Chemical Component Dictionary. The

Link column lists molecule types, if any, to which the group is linked. The Z score for a bond length (or angle) is the number of standard deviations the observed value is removed from the expected value. A bond length (or angle) with $|Z| > 2$ is considered an outlier worth inspection. RMSZ is the root-mean-square of all Z scores of the bond lengths (or angles).

Mol	Type	Chain	Res	Link	Bond lengths			Bond angles		
					Counts	RMSZ	# Z > 2	Counts	RMSZ	# Z > 2
2	PFI	A	601	-	27,28,28	1.25	2 (7%)	33,40,40	2.00	12 (36%)

In the following table, the Chirals column lists the number of chiral outliers, the number of chiral centers analysed, the number of these observed in the model and the number defined in the Chemical Component Dictionary. Similar counts are reported in the Torsion and Rings columns. '-' means no outliers of that kind were identified.

Mol	Type	Chain	Res	Link	Chirals	Torsions	Rings
2	PFI	A	601	-	-	0/16/37/37	0/3/3/3

All (2) bond length outliers are listed below:

Mol	Chain	Res	Type	Atoms	Z	Observed(Å)	Ideal(Å)
2	A	601	PFI	C11-C12	2.04	1.58	1.53
2	A	601	PFI	C8-C3	2.67	1.49	1.44

All (12) bond angle outliers are listed below:

Mol	Chain	Res	Type	Atoms	Z	Observed(°)	Ideal(°)
2	A	601	PFI	C6-C7-C8	-4.03	118.22	122.21
2	A	601	PFI	C18-C23-C22	-2.92	118.27	122.84
2	A	601	PFI	O10-C3-C8	-2.81	120.56	125.84
2	A	601	PFI	C15-C16-C17	-2.53	100.99	105.01
2	A	601	PFI	C14-C13-C17	-2.47	101.08	105.01
2	A	601	PFI	C16-C17-C13	-2.44	101.61	104.39
2	A	601	PFI	C21-C20-C19	-2.23	117.94	121.02
2	A	601	PFI	F26-C23-C18	2.19	122.79	118.58
2	A	601	PFI	O4-C3-O10	2.29	121.37	117.34
2	A	601	PFI	C13-C17-C5	2.54	116.21	112.14
2	A	601	PFI	O24-C22-C23	3.79	119.26	116.31
2	A	601	PFI	C19-C18-C23	5.47	122.62	119.32

There are no chirality outliers.

There are no torsion outliers.

There are no ring outliers.

No monomer is involved in short contacts.

5.7 Other polymers [i](#)

There are no such residues in this entry.

5.8 Polymer linkage issues [i](#)

There are no chain breaks in this entry.

6 Fit of model and data [i](#)

6.1 Protein, DNA and RNA chains [i](#)

EDS was not executed - this section is therefore empty.

6.2 Non-standard residues in protein, DNA, RNA chains [i](#)

EDS was not executed - this section is therefore empty.

6.3 Carbohydrates [i](#)

EDS was not executed - this section is therefore empty.

6.4 Ligands [i](#)

EDS was not executed - this section is therefore empty.

6.5 Other polymers [i](#)

EDS was not executed - this section is therefore empty.