



Full wwPDB X-ray Structure Validation Report ⓘ

Feb 21, 2018 – 05:38 pm GMT

PDB ID : 2HBC
Title : HIGH RESOLUTION X-RAY STRUCTURES OF MYOGLOBIN-AND
HEMOGLOBIN-ALKYL ISOCYANIDE COMPLEXES
Authors : Johnson, K.A.; Olson, J.S.; Phillips Jr., G.N.
Deposited on : 1994-08-31
Resolution : 2.10 Å(reported)

This is a Full wwPDB X-ray Structure Validation Report for a publicly released PDB entry.

We welcome your comments at validation@mail.wwpdb.org

A user guide is available at

<https://www.wwpdb.org/validation/2017/XrayValidationReportHelp>

with specific help available everywhere you see the ⓘ symbol.

The following versions of software and data (see [references ⓘ](#)) were used in the production of this report:

MolProbity : 4.02b-467
Mogul : 1.7.3 (157068), CSD as539be (2018)
Xtrriage (Phenix) : **NOT EXECUTED**
EDS : **NOT EXECUTED**
Percentile statistics : 20171227.v01 (using entries in the PDB archive December 27th 2017)
Ideal geometry (proteins) : Engh & Huber (2001)
Ideal geometry (DNA, RNA) : Parkinson et al. (1996)
Validation Pipeline (wwPDB-VP) : trunk30686

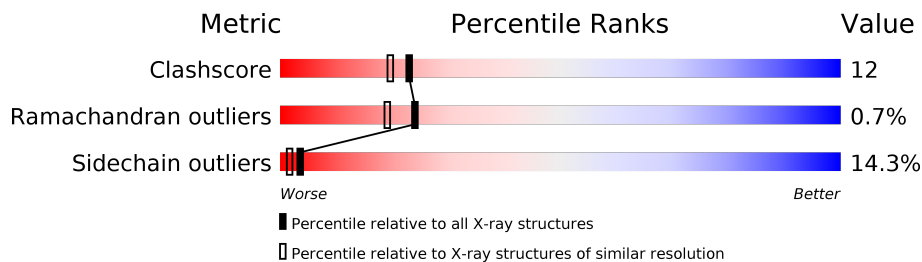
1 Overall quality at a glance

The following experimental techniques were used to determine the structure:

X-RAY DIFFRACTION

The reported resolution of this entry is 2.10 Å.

Percentile scores (ranging between 0-100) for global validation metrics of the entry are shown in the following graphic. The table shows the number of entries on which the scores are based.



Metric	Whole archive (#Entries)	Similar resolution (#Entries, resolution range(Å))
Clashscore	122078	5107 (2.10-2.10)
Ramachandran outliers	120005	5057 (2.10-2.10)
Sidechain outliers	119972	5058 (2.10-2.10)

The table below summarises the geometric issues observed across the polymeric chains and their fit to the electron density. The red, orange, yellow and green segments on the lower bar indicate the fraction of residues that contain outliers for ≥ 3 , 2, 1 and 0 types of geometric quality criteria. A grey segment represents the fraction of residues that are not modelled. The numeric value for each fraction is indicated below the corresponding segment, with a dot representing fractions $\leq 5\%$. The upper red bar (where present) indicates the fraction of residues that have poor fit to the electron density. The numeric value is given above the bar.

Note EDS was not executed.

Mol	Chain	Length	Quality of chain
1	A	141	
2	B	146	

The following table lists non-polymeric compounds, carbohydrate monomers and non-standard residues in protein, DNA, RNA chains that are outliers for geometric or electron-density-fit criteria:

Mol	Type	Chain	Res	Chirality	Geometry	Clashes	Electron density
4	ENC	B	148	-	-	X	-

2 Entry composition [i](#)

There are 5 unique types of molecules in this entry. The entry contains 2352 atoms, of which 0 are hydrogens and 0 are deuteriums.

In the tables below, the ZeroOcc column contains the number of atoms modelled with zero occupancy, the AltConf column contains the number of residues with at least one atom in alternate conformation and the Trace column contains the number of residues modelled with at most 2 atoms.

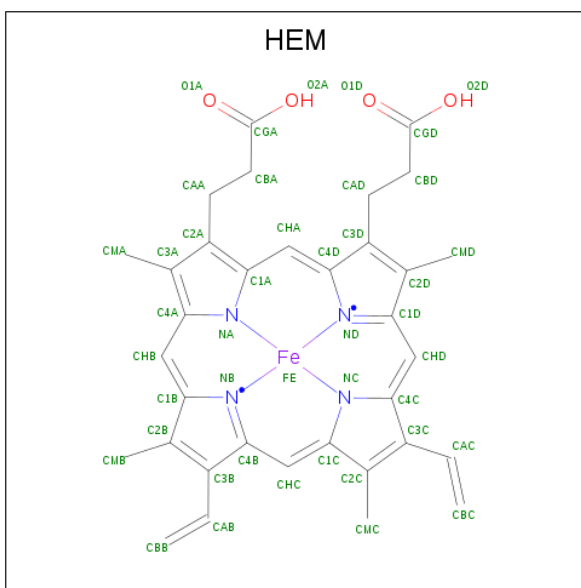
- Molecule 1 is a protein called HEMOGLOBIN A (ETHYL ISOCYANIDE) (ALPHA CHAIN).

Mol	Chain	Residues	Atoms					ZeroOcc	AltConf	Trace
			Total	C	N	O	S			
1	A	141	1069	685	187	194	3	0	0	0

- Molecule 2 is a protein called HEMOGLOBIN A (ETHYL ISOCYANIDE) (BETA CHAIN).

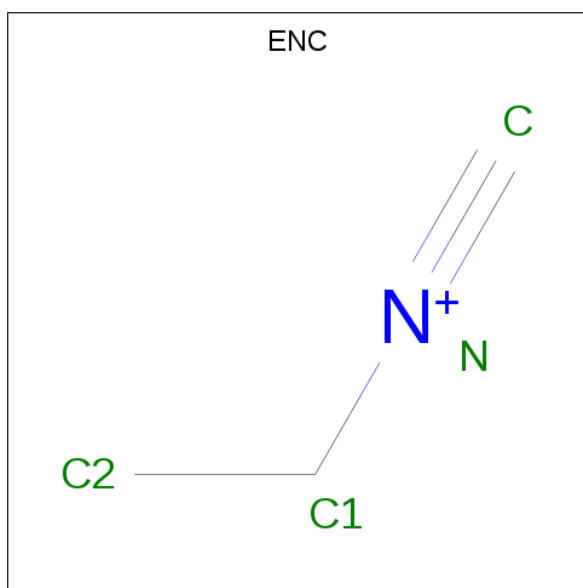
Mol	Chain	Residues	Atoms					ZeroOcc	AltConf	Trace
			Total	C	N	O	S			
2	B	146	1123	724	195	201	3	0	0	0

- Molecule 3 is PROTOPORPHYRIN IX CONTAINING FE (three-letter code: HEM) (formula: $C_{34}H_{32}FeN_4O_4$).



Mol	Chain	Residues	Atoms					ZeroOcc	AltConf
			Total	C	Fe	N	O		
3	A	1	43	34	1	4	4	0	0
3	B	1	43	34	1	4	4	0	0

- Molecule 4 is ETHYL ISOCYANIDE (three-letter code: ENC) (formula: C₃H₆N).



Mol	Chain	Residues	Atoms	ZeroOcc	AltConf
4	A	1	Total C N 4 3 1	0	0
4	B	1	Total C N 4 3 1	0	0

- Molecule 5 is water.

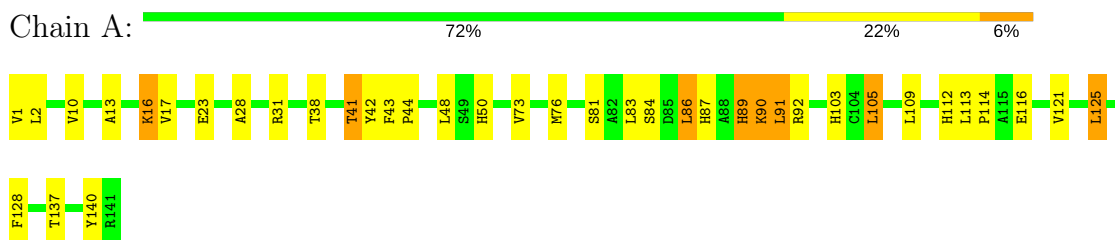
Mol	Chain	Residues	Atoms	ZeroOcc	AltConf
5	A	32	Total O 32 32	0	0
5	B	34	Total O 34 34	0	0

3 Residue-property plots [i](#)

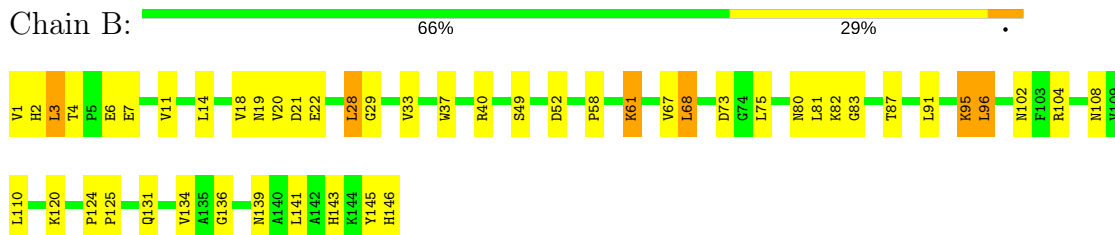
These plots are drawn for all protein, RNA and DNA chains in the entry. The first graphic for a chain summarises the proportions of the various outlier classes displayed in the second graphic. The second graphic shows the sequence view annotated by issues in geometry and electron density. Residues are color-coded according to the number of geometric quality criteria for which they contain at least one outlier: green = 0, yellow = 1, orange = 2 and red = 3 or more. A red dot above a residue indicates a poor fit to the electron density ($RSRZ > 2$). Stretches of 2 or more consecutive residues without any outlier are shown as a green connector. Residues present in the sample, but not in the model, are shown in grey.

Note EDS was not executed.

- Molecule 1: HEMOGLOBIN A (ETHYL ISOCYANIDE) (ALPHA CHAIN)



- Molecule 2: HEMOGLOBIN A (ETHYL ISOCYANIDE) (BETA CHAIN)



4 Data and refinement statistics

Xtrriage (Phenix) and EDS were not executed - this section is therefore incomplete.

Property	Value	Source
Space group	P 41 21 2	Depositor
Cell constants a, b, c, α , β , γ	54.05Å 54.05Å 193.80Å 90.00° 90.00° 90.00°	Depositor
Resolution (Å)	5.00 – 2.10	Depositor
% Data completeness (in resolution range)	(Not available) (5.00-2.10)	Depositor
R_{merge}	(Not available)	Depositor
R_{sym}	(Not available)	Depositor
Refinement program	X-PLOR	Depositor
R, R_{free}	0.177 , (Not available)	Depositor
Estimated twinning fraction	No twinning to report.	Xtrriage
Total number of atoms	2352	wwPDB-VP
Average B, all atoms (Å ²)	29.0	wwPDB-VP

5 Model quality [i](#)

5.1 Standard geometry [i](#)

Bond lengths and bond angles in the following residue types are not validated in this section: HEM, ENC

The Z score for a bond length (or angle) is the number of standard deviations the observed value is removed from the expected value. A bond length (or angle) with $|Z| > 5$ is considered an outlier worth inspection. RMSZ is the root-mean-square of all Z scores of the bond lengths (or angles).

Mol	Chain	Bond lengths		Bond angles	
		RMSZ	# Z >5	RMSZ	# Z >5
1	A	0.86	0/1097	0.79	0/1491
2	B	0.84	0/1153	0.80	1/1566 (0.1%)
All	All	0.85	0/2250	0.80	1/3057 (0.0%)

Chiral center outliers are detected by calculating the chiral volume of a chiral center and verifying if the center is modelled as a planar moiety or with the opposite hand. A planarity outlier is detected by checking planarity of atoms in a peptide group, atoms in a mainchain group or atoms of a sidechain that are expected to be planar.

Mol	Chain	#Chirality outliers	#Planarity outliers
2	B	0	1

There are no bond length outliers.

All (1) bond angle outliers are listed below:

Mol	Chain	Res	Type	Atoms	Z	Observed($^{\circ}$)	Ideal($^{\circ}$)
2	B	96	LEU	CA-CB-CG	5.30	127.49	115.30

There are no chirality outliers.

All (1) planarity outliers are listed below:

Mol	Chain	Res	Type	Group
2	B	145	TYR	Sidechain

5.2 Too-close contacts [i](#)

In the following table, the Non-H and H(model) columns list the number of non-hydrogen atoms and hydrogen atoms in the chain respectively. The H(added) column lists the number of hydrogen atoms added and optimized by MolProbity. The Clashes column lists the number of clashes within

the asymmetric unit, whereas Symm-Clashes lists symmetry related clashes.

Mol	Chain	Non-H	H(model)	H(added)	Clashes	Symm-Clashes
1	A	1069	0	1073	30	0
2	B	1123	0	1118	29	0
3	A	43	0	30	0	0
3	B	43	0	30	2	0
4	A	4	0	6	1	0
4	B	4	0	6	5	0
5	A	32	0	0	4	0
5	B	34	0	0	3	0
All	All	2352	0	2263	56	0

The all-atom clashscore is defined as the number of clashes found per 1000 atoms (including hydrogen atoms). The all-atom clashscore for this structure is 12.

All (56) close contacts within the same asymmetric unit are listed below, sorted by their clash magnitude.

Atom-1	Atom-2	Interatomic distance (Å)	Clash overlap (Å)
2:B:20:VAL:HG23	2:B:68:LEU:HD12	1.30	1.07
2:B:139:ASN:HB3	5:B:360:HOH:O	1.63	0.99
1:A:113:LEU:HB3	1:A:116:GLU:HG2	1.54	0.86
1:A:31:ARG:CZ	5:A:270:HOH:O	2.38	0.70
1:A:103:HIS:HD2	5:A:169:HOH:O	1.80	0.63
2:B:91:LEU:HA	2:B:95:LYS:HZ3	1.65	0.62
2:B:67:VAL:HG21	4:B:148:ENC:H22	1.82	0.62
1:A:121:VAL:HG12	1:A:125:LEU:HD22	1.82	0.61
2:B:80:ASN:HD21	2:B:83:GLY:HA3	1.64	0.60
1:A:86:LEU:CD2	1:A:90:LYS:HE3	2.32	0.60
1:A:31:ARG:NH2	5:A:270:HOH:O	2.33	0.60
1:A:81:SER:O	1:A:84:SER:HB2	2.02	0.59
1:A:31:ARG:NH1	2:B:124:PRO:HG3	2.19	0.58
1:A:1:VAL:HG12	1:A:2:LEU:N	2.18	0.57
2:B:28:LEU:HG	4:B:148:ENC:C2	2.34	0.57
2:B:37:TRP:HE1	2:B:102:ASN:HD21	1.52	0.57
1:A:73:VAL:HG23	1:A:76:MET:CE	2.34	0.57
2:B:141:LEU:HD12	3:B:147:HEM:HBB2	1.87	0.57
2:B:2:HIS:CE1	5:B:659:HOH:O	2.57	0.56
1:A:73:VAL:HG23	1:A:76:MET:HE2	1.87	0.56
1:A:86:LEU:HD23	1:A:90:LYS:HE3	1.88	0.55
2:B:58:PRO:O	2:B:61:LYS:HG3	2.09	0.52
2:B:141:LEU:HD12	3:B:147:HEM:CBB	2.39	0.52
2:B:28:LEU:HG	4:B:148:ENC:H23	1.93	0.51

Continued on next page...

Continued from previous page...

Atom-1	Atom-2	Interatomic distance (Å)	Clash overlap (Å)
1:A:1:VAL:O	1:A:2:LEU:HB2	2.09	0.51
1:A:16:LYS:N	1:A:16:LYS:HD3	2.26	0.50
2:B:108:ASN:ND2	2:B:131:GLN:HE22	2.09	0.50
1:A:103:HIS:HE1	2:B:131:GLN:OE1	1.93	0.50
2:B:67:VAL:HG21	4:B:148:ENC:C2	2.40	0.50
1:A:31:ARG:HH11	2:B:124:PRO:HG3	1.77	0.50
1:A:50:HIS:ND1	1:A:50:HIS:O	2.45	0.50
1:A:137:THR:O	1:A:140:TYR:HB2	2.13	0.47
1:A:112:HIS:C	1:A:114:PRO:HD3	2.34	0.47
2:B:143:HIS:O	2:B:146:HIS:HB2	2.15	0.47
2:B:28:LEU:HG	4:B:148:ENC:H21	1.97	0.47
2:B:4:THR:OG1	2:B:7:GLU:HG3	2.15	0.46
2:B:29:GLY:O	2:B:33:VAL:HG23	2.15	0.46
2:B:1:VAL:HG21	2:B:136:GLY:HA3	1.97	0.46
2:B:80:ASN:ND2	2:B:83:GLY:HA3	2.28	0.45
1:A:87:HIS:HA	1:A:91:LEU:HD12	1.97	0.45
1:A:31:ARG:NE	5:A:270:HOH:O	2.45	0.45
1:A:13:ALA:O	1:A:17:VAL:HG23	2.17	0.44
1:A:42:TYR:C	1:A:44:PRO:HD3	2.37	0.44
2:B:104:ARG:HG3	5:B:267:HOH:O	2.17	0.43
1:A:43:PHE:N	1:A:44:PRO:HD3	2.33	0.43
1:A:89:HIS:ND1	1:A:89:HIS:O	2.52	0.42
2:B:141:LEU:HA	2:B:141:LEU:HD23	1.90	0.42
2:B:7:GLU:O	2:B:11:VAL:HG23	2.19	0.42
2:B:19:ASN:ND2	2:B:22:GLU:HG3	2.36	0.41
2:B:75:LEU:HA	2:B:75:LEU:HD23	1.92	0.41
1:A:43:PHE:CZ	4:A:143:ENC:H12	2.55	0.41
1:A:83:LEU:HA	1:A:83:LEU:HD23	1.67	0.41
1:A:28:ALA:CB	1:A:105:LEU:HD13	2.51	0.41
1:A:31:ARG:HH11	1:A:31:ARG:HG3	1.85	0.41
1:A:10:VAL:HG21	1:A:128:PHE:HB2	2.03	0.41
2:B:124:PRO:N	2:B:125:PRO:CD	2.84	0.40

There are no symmetry-related clashes.

5.3 Torsion angles [i](#)

5.3.1 Protein backbone [i](#)

In the following table, the Percentiles column shows the percent Ramachandran outliers of the chain as a percentile score with respect to all X-ray entries followed by that with respect to entries

of similar resolution.

The Analysed column shows the number of residues for which the backbone conformation was analysed, and the total number of residues.

Mol	Chain	Analysed	Favoured	Allowed	Outliers	Percentiles	
1	A	139/141 (99%)	132 (95%)	6 (4%)	1 (1%)	24	19
2	B	144/146 (99%)	134 (93%)	9 (6%)	1 (1%)	24	19
All	All	283/287 (99%)	266 (94%)	15 (5%)	2 (1%)	24	19

All (2) Ramachandran outliers are listed below:

Mol	Chain	Res	Type
1	A	41	THR
2	B	3	LEU

5.3.2 Protein sidechains [i](#)

In the following table, the Percentiles column shows the percent sidechain outliers of the chain as a percentile score with respect to all X-ray entries followed by that with respect to entries of similar resolution.

The Analysed column shows the number of residues for which the sidechain conformation was analysed, and the total number of residues.

Mol	Chain	Analysed	Rotameric	Outliers	Percentiles	
1	A	113/113 (100%)	100 (88%)	13 (12%)	6	3
2	B	118/118 (100%)	98 (83%)	20 (17%)	2	1
All	All	231/231 (100%)	198 (86%)	33 (14%)	3	2

All (33) residues with a non-rotameric sidechain are listed below:

Mol	Chain	Res	Type
1	A	16	LYS
1	A	23	GLU
1	A	38	THR
1	A	41	THR
1	A	48	LEU
1	A	86	LEU
1	A	89	HIS
1	A	90	LYS
1	A	91	LEU
1	A	92	ARG

Continued on next page...

Continued from previous page...

Mol	Chain	Res	Type
1	A	105	LEU
1	A	109	LEU
1	A	125	LEU
2	B	3	LEU
2	B	6	GLU
2	B	14	LEU
2	B	18	VAL
2	B	21	ASP
2	B	28	LEU
2	B	40	ARG
2	B	49	SER
2	B	52	ASP
2	B	61	LYS
2	B	68	LEU
2	B	73	ASP
2	B	81	LEU
2	B	82	LYS
2	B	87	THR
2	B	95	LYS
2	B	96	LEU
2	B	110	LEU
2	B	120	LYS
2	B	134	VAL

Some sidechains can be flipped to improve hydrogen bonding and reduce clashes. All (6) such sidechains are listed below:

Mol	Chain	Res	Type
1	A	9	ASN
1	A	97	ASN
1	A	103	HIS
2	B	2	HIS
2	B	102	ASN
2	B	108	ASN

5.3.3 RNA [i](#)

There are no RNA molecules in this entry.

5.4 Non-standard residues in protein, DNA, RNA chains [i](#)

There are no non-standard protein/DNA/RNA residues in this entry.

5.5 Carbohydrates [i](#)

There are no carbohydrates in this entry.

5.6 Ligand geometry [i](#)

4 ligands are modelled in this entry.

In the following table, the Counts columns list the number of bonds (or angles) for which Mogul statistics could be retrieved, the number of bonds (or angles) that are observed in the model and the number of bonds (or angles) that are defined in the Chemical Component Dictionary. The Link column lists molecule types, if any, to which the group is linked. The Z score for a bond length (or angle) is the number of standard deviations the observed value is removed from the expected value. A bond length (or angle) with $|Z| > 2$ is considered an outlier worth inspection. RMSZ is the root-mean-square of all Z scores of the bond lengths (or angles).

Mol	Type	Chain	Res	Link	Bond lengths			Bond angles		
					Counts	RMSZ	# Z > 2	Counts	RMSZ	# Z > 2
3	HEM	A	142	1,4	27,50,50	2.53	12 (44%)	17,82,82	2.15	6 (35%)
4	ENC	A	143	3	2,3,3	2.48	1 (50%)	1,2,2	0.09	0
3	HEM	B	147	2,4	27,50,50	1.79	10 (37%)	17,82,82	1.42	2 (11%)
4	ENC	B	148	3	2,3,3	0.24	0	1,2,2	0.12	0

In the following table, the Chirals column lists the number of chiral outliers, the number of chiral centers analysed, the number of these observed in the model and the number defined in the Chemical Component Dictionary. Similar counts are reported in the Torsion and Rings columns. '2' means no outliers of that kind were identified.

Mol	Type	Chain	Res	Link	Chirals	Torsions	Rings
3	HEM	A	142	1,4	-	0/6/54/54	0/0/8/8
4	ENC	A	143	3	-	0/0/1/1	0/0/0/0
3	HEM	B	147	2,4	-	0/6/54/54	0/0/8/8
4	ENC	B	148	3	-	0/0/1/1	0/0/0/0

All (23) bond length outliers are listed below:

Mol	Chain	Res	Type	Atoms	Z	Observed(Å)	Ideal(Å)
3	A	142	HEM	C3B-C2B	-6.44	1.31	1.40
3	A	142	HEM	C3C-CAC	-5.21	1.37	1.47

Continued on next page...

Continued from previous page...

Mol	Chain	Res	Type	Atoms	Z	Observed(Å)	Ideal(Å)
3	A	142	HEM	C3C-C2C	-4.83	1.33	1.40
3	B	147	HEM	C3B-CAB	-3.72	1.40	1.47
4	A	143	ENC	C1-N	-3.51	1.27	1.47
3	A	142	HEM	C3B-CAB	-3.12	1.41	1.47
3	B	147	HEM	CMA-C3A	-2.63	1.46	1.51
3	B	147	HEM	C2A-C3A	-2.42	1.30	1.37
3	A	142	HEM	C3D-C2D	-2.36	1.30	1.37
3	B	147	HEM	C3B-C2B	-2.29	1.37	1.40
3	B	147	HEM	C3C-CAC	-2.23	1.43	1.47
3	B	147	HEM	CAA-C2A	-2.22	1.48	1.52
3	A	142	HEM	C4A-CHB	-2.07	1.34	1.40
3	B	147	HEM	C4A-CHB	-2.06	1.34	1.40
3	A	142	HEM	CBC-CAC	2.12	1.43	1.29
3	A	142	HEM	C1A-NA	2.36	1.41	1.36
3	B	147	HEM	C1A-NA	2.39	1.41	1.36
3	A	142	HEM	CMA-C3A	2.40	1.56	1.51
3	B	147	HEM	C1C-C2C	2.60	1.48	1.42
3	A	142	HEM	C4A-NA	2.66	1.41	1.36
3	B	147	HEM	C4A-NA	2.68	1.41	1.36
3	A	142	HEM	C1B-C2B	2.74	1.48	1.42
3	A	142	HEM	C1D-ND	3.09	1.42	1.36

All (8) bond angle outliers are listed below:

Mol	Chain	Res	Type	Atoms	Z	Observed(°)	Ideal(°)
3	B	147	HEM	CBA-CAA-C2A	-4.17	104.51	112.48
3	A	142	HEM	CMD-C2D-C1D	-3.50	123.09	128.46
3	A	142	HEM	C1D-C2D-C3D	-2.28	105.41	107.00
3	A	142	HEM	CAD-C3D-C2D	-2.27	122.52	129.00
3	B	147	HEM	C4A-C3A-C2A	2.19	108.52	107.00
3	A	142	HEM	C3B-C4B-NB	2.73	112.74	109.21
3	A	142	HEM	C4C-C3C-C2C	4.26	109.87	106.90
3	A	142	HEM	CMC-C2C-C3C	4.27	132.66	124.88

There are no chirality outliers.

There are no torsion outliers.

There are no ring outliers.

3 monomers are involved in 8 short contacts:

Mol	Chain	Res	Type	Clashes	Symm-Clashes
4	A	143	ENC	1	0

Continued on next page...

Continued from previous page...

Mol	Chain	Res	Type	Clashes	Symm-Clashes
3	B	147	HEM	2	0
4	B	148	ENC	5	0

5.7 Other polymers [i](#)

There are no such residues in this entry.

5.8 Polymer linkage issues [i](#)

There are no chain breaks in this entry.

6 Fit of model and data [i](#)

6.1 Protein, DNA and RNA chains [i](#)

EDS was not executed - this section is therefore empty.

6.2 Non-standard residues in protein, DNA, RNA chains [i](#)

EDS was not executed - this section is therefore empty.

6.3 Carbohydrates [i](#)

EDS was not executed - this section is therefore empty.

6.4 Ligands [i](#)

EDS was not executed - this section is therefore empty.

6.5 Other polymers [i](#)

EDS was not executed - this section is therefore empty.