



Full wwPDB X-ray Structure Validation Report ⓘ

Jun 15, 2020 – 10:22 pm BST

PDB ID : 1HG1
Title : X-ray structure of the complex between *Erwinia chrysanthemi* L-asparaginase and D-aspartate
Authors : Lubkowski, J.; Wlodawer, A.; Kolyani, K.A.
Deposited on : 2000-12-08
Resolution : 1.80 Å(reported)

This is a Full wwPDB X-ray Structure Validation Report for a publicly released PDB entry.

We welcome your comments at validation@mail.wwpdb.org

A user guide is available at

<https://www.wwpdb.org/validation/2017/XrayValidationReportHelp>

with specific help available everywhere you see the ⓘ symbol.

The following versions of software and data (see [references ⓘ](#)) were used in the production of this report:

MolProbity : 4.02b-467
Xtriage (Phenix) : 1.13
EDS : 2.11
Percentile statistics : 20191225.v01 (using entries in the PDB archive December 25th 2019)
Refmac : 5.8.0158
CCP4 : 7.0.044 (Gargrove)
Ideal geometry (proteins) : Engh & Huber (2001)
Ideal geometry (DNA, RNA) : Parkinson et al. (1996)
Validation Pipeline (wwPDB-VP) : 2.11

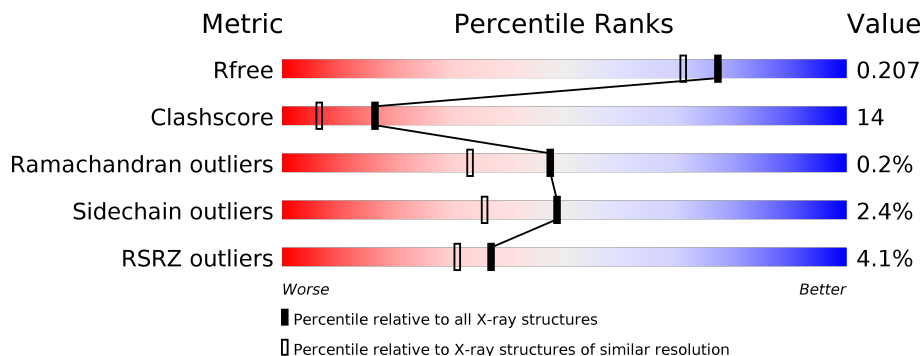
1 Overall quality at a glance

The following experimental techniques were used to determine the structure:

X-RAY DIFFRACTION

The reported resolution of this entry is 1.80 Å.

Percentile scores (ranging between 0-100) for global validation metrics of the entry are shown in the following graphic. The table shows the number of entries on which the scores are based.



Metric	Whole archive (#Entries)	Similar resolution (#Entries, resolution range(Å))
R_{free}	130704	5950 (1.80-1.80)
Clashscore	141614	6793 (1.80-1.80)
Ramachandran outliers	138981	6697 (1.80-1.80)
Sidechain outliers	138945	6696 (1.80-1.80)
RSRZ outliers	127900	5850 (1.80-1.80)

The table below summarises the geometric issues observed across the polymeric chains and their fit to the electron density. The red, orange, yellow and green segments on the lower bar indicate the fraction of residues that contain outliers for ≥ 3 , 2, 1 and 0 types of geometric quality criteria respectively. A grey segment represents the fraction of residues that are not modelled. The numeric value for each fraction is indicated below the corresponding segment, with a dot representing fractions $\leq 5\%$. The upper red bar (where present) indicates the fraction of residues that have poor fit to the electron density. The numeric value is given above the bar.

Mol	Chain	Length	Quality of chain
1	A	327	<p>6% 71% 22% • 6%</p>
1	B	327	<p>4% 73% 20% • 6%</p>
1	C	327	<p>4% 72% 21% • 6%</p>
1	D	327	<p>2% 74% 19% • 6%</p>

2 Entry composition [i](#)

There are 3 unique types of molecules in this entry. The entry contains 10492 atoms, of which 0 are hydrogens and 0 are deuteriums.

In the tables below, the ZeroOcc column contains the number of atoms modelled with zero occupancy, the AltConf column contains the number of residues with at least one atom in alternate conformation and the Trace column contains the number of residues modelled with at most 2 atoms.

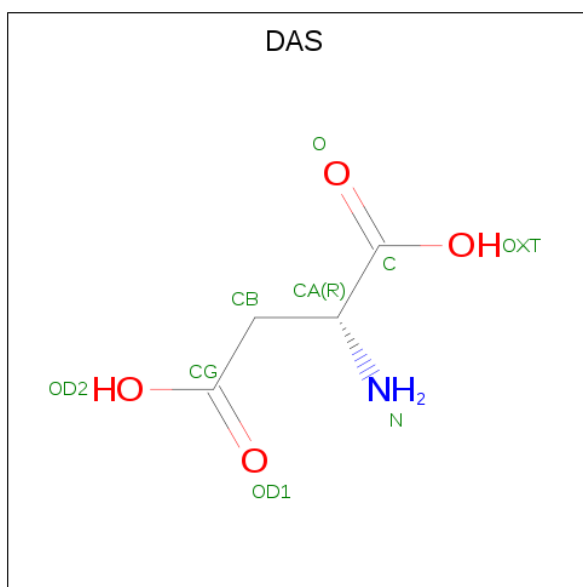
- Molecule 1 is a protein called L-ASPARAGINASE.

Mol	Chain	Residues	Atoms					ZeroOcc	AltConf	Trace
1	A	306	Total	C	N	O	S	0	2	0
			2346	1476	412	449	9			
1	B	307	Total	C	N	O	S	0	8	0
			2396	1507	419	458	12			
1	C	309	Total	C	N	O	S	0	2	0
			2364	1487	415	452	10			
1	D	309	Total	C	N	O	S	0	3	0
			2370	1487	419	455	9			

There are 16 discrepancies between the modelled and reference sequences:

Chain	Residue	Modelled	Actual	Comment	Reference
A	156	ILE	LEU	variant	UNP P06608
A	178	ARG	LYS	variant	UNP P06608
A	267	LEU	MET	variant	UNP P06608
A	274	MET	ILE	variant	UNP P06608
B	156	ILE	LEU	variant	UNP P06608
B	178	ARG	LYS	variant	UNP P06608
B	267	LEU	MET	variant	UNP P06608
B	274	MET	ILE	variant	UNP P06608
C	156	ILE	LEU	variant	UNP P06608
C	178	ARG	LYS	variant	UNP P06608
C	267	LEU	MET	variant	UNP P06608
C	274	MET	ILE	variant	UNP P06608
D	156	ILE	LEU	variant	UNP P06608
D	178	ARG	LYS	variant	UNP P06608
D	267	LEU	MET	variant	UNP P06608
D	274	MET	ILE	variant	UNP P06608

- Molecule 2 is D-ASPARTIC ACID (three-letter code: DAS) (formula: C₄H₇NO₄).



Mol	Chain	Residues	Atoms				ZeroOcc	AltConf
2	A	1	Total	C	N	O	0	0
			9	4	1	4		
2	B	1	Total	C	N	O	0	0
			9	4	1	4		
2	C	1	Total	C	N	O	0	0
			9	4	1	4		
2	D	1	Total	C	N	O	0	0
			9	4	1	4		

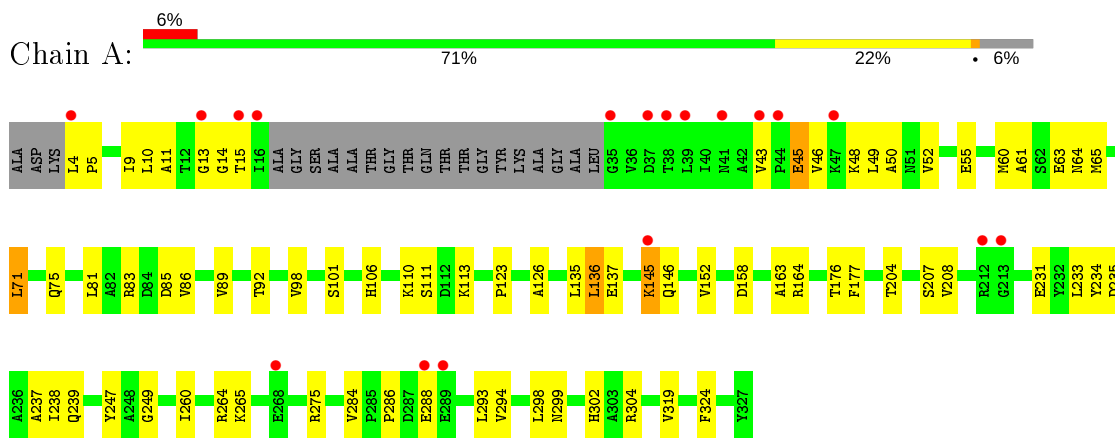
- Molecule 3 is water.

Mol	Chain	Residues	Atoms		ZeroOcc	AltConf
3	A	219	Total	O	0	3
			219	219		
3	B	255	Total	O	0	4
			255	255		
3	C	240	Total	O	0	6
			240	240		
3	D	266	Total	O	0	2
			266	266		

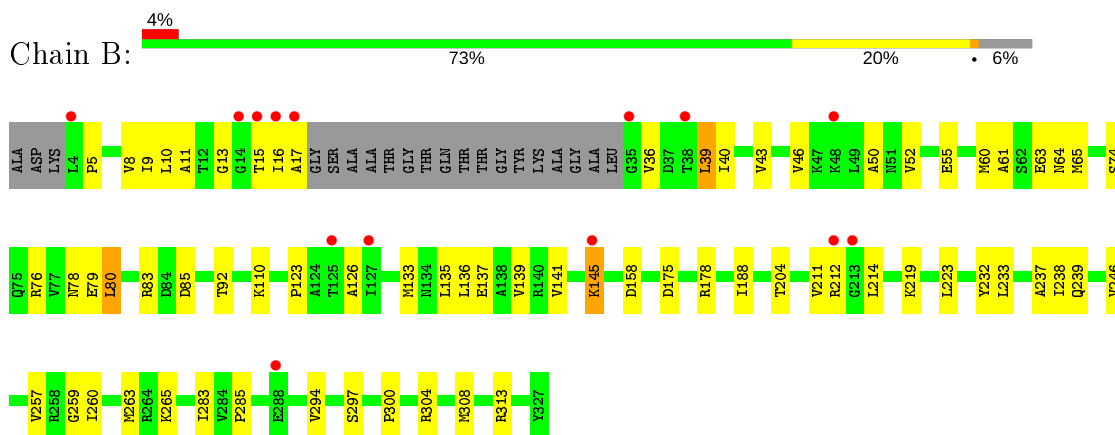
3 Residue-property plots i

These plots are drawn for all protein, RNA and DNA chains in the entry. The first graphic for a chain summarises the proportions of the various outlier classes displayed in the second graphic. The second graphic shows the sequence view annotated by issues in geometry and electron density. Residues are color-coded according to the number of geometric quality criteria for which they contain at least one outlier: green = 0, yellow = 1, orange = 2 and red = 3 or more. A red dot above a residue indicates a poor fit to the electron density ($RSRZ > 2$). Stretches of 2 or more consecutive residues without any outlier are shown as a green connector. Residues present in the sample, but not in the model, are shown in grey.

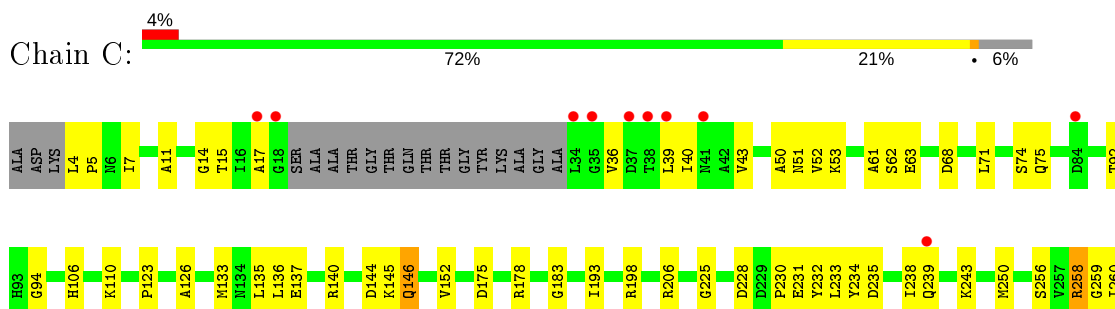
- Molecule 1: L-ASPARAGINASE



- Molecule 1: L-ASPARAGINASE

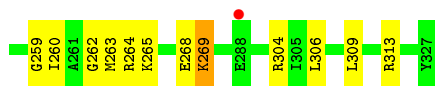
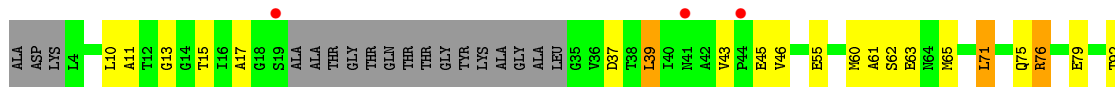
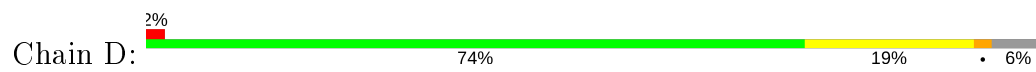


- Molecule 1: L-ASPARAGINASE





• Molecule 1: L-ASPARAGINASE



4 Data and refinement statistics

Property	Value	Source
Space group	C 1 2 1	Depositor
Cell constants a, b, c, α , β , γ	105.84Å 90.42Å 126.89Å 90.00° 91.80° 90.00°	Depositor
Resolution (Å)	20.00 – 1.80 19.97 – 1.80	Depositor EDS
% Data completeness (in resolution range)	85.5 (20.00-1.80) 85.2 (19.97-1.80)	Depositor EDS
R_{merge}	(Not available)	Depositor
R_{sym}	0.08	Depositor
$\langle I/\sigma(I) \rangle$ ¹	2.22 (at 1.80Å)	Xtrriage
Refinement program	CNS 1.0	Depositor
R, R_{free}	0.179 , 0.204 0.183 , 0.207	Depositor DCC
R_{free} test set	1989 reflections (1.99%)	wwPDB-VP
Wilson B-factor (Å ²)	13.5	Xtrriage
Anisotropy	0.453	Xtrriage
Bulk solvent k_{sol} (e/Å ³), B_{sol} (Å ²)	0.38 , 54.4	EDS
L-test for twinning ²	$\langle L \rangle = 0.49$, $\langle L^2 \rangle = 0.32$	Xtrriage
Estimated twinning fraction	0.023 for -h,-k,l	Xtrriage
F_o, F_c correlation	0.95	EDS
Total number of atoms	10492	wwPDB-VP
Average B, all atoms (Å ²)	19.0	wwPDB-VP

Xtrriage's analysis on translational NCS is as follows: *The largest off-origin peak in the Patterson function is 4.11% of the height of the origin peak. No significant pseudotranslation is detected.*

¹ Intensities estimated from amplitudes.

² Theoretical values of $\langle |L| \rangle$, $\langle L^2 \rangle$ for acentric reflections are 0.5, 0.333 respectively for untwinned datasets, and 0.375, 0.2 for perfectly twinned datasets.

5 Model quality [i](#)

5.1 Standard geometry [i](#)

Bond lengths and bond angles in the following residue types are not validated in this section: DAS

The Z score for a bond length (or angle) is the number of standard deviations the observed value is removed from the expected value. A bond length (or angle) with $|Z| > 5$ is considered an outlier worth inspection. RMSZ is the root-mean-square of all Z scores of the bond lengths (or angles).

Mol	Chain	Bond lengths		Bond angles	
		RMSZ	# Z >5	RMSZ	# Z >5
1	A	0.29	0/2380	0.60	0/3225
1	B	0.31	0/2430	0.63	0/3290
1	C	0.29	0/2398	0.60	0/3248
1	D	0.31	0/2404	0.63	0/3256
All	All	0.30	0/9612	0.62	0/13019

There are no bond length outliers.

There are no bond angle outliers.

There are no chirality outliers.

There are no planarity outliers.

5.2 Too-close contacts [i](#)

In the following table, the Non-H and H(model) columns list the number of non-hydrogen atoms and hydrogen atoms in the chain respectively. The H(added) column lists the number of hydrogen atoms added and optimized by MolProbity. The Clashes column lists the number of clashes within the asymmetric unit, whereas Symm-Clashes lists symmetry related clashes.

Mol	Chain	Non-H	H(model)	H(added)	Clashes	Symm-Clashes
1	A	2346	0	2391	73	0
1	B	2396	0	2440	69	0
1	C	2364	0	2410	63	0
1	D	2370	0	2410	72	0
2	A	9	0	5	3	0
2	B	9	0	5	3	0
2	C	9	0	5	3	0
2	D	9	0	5	0	0
3	A	219	0	0	20	0

Continued on next page...

Continued from previous page...

Mol	Chain	Non-H	H(model)	H(added)	Clashes	Symm-Clashes
3	B	255	0	0	22	0
3	C	240	0	0	21	0
3	D	266	0	0	21	0
All	All	10492	0	9671	275	0

The all-atom clashscore is defined as the number of clashes found per 1000 atoms (including hydrogen atoms). The all-atom clashscore for this structure is 14.

All (275) close contacts within the same asymmetric unit are listed below, sorted by their clash magnitude.

Atom-1	Atom-2	Interatomic distance (Å)	Clash overlap (Å)
1:D:43:VAL:HG11	1:D:135:LEU:HD23	1.43	1.00
1:C:230:PRO:HG2	1:C:233:LEU:HD23	1.42	0.98
1:B:43:VAL:HG11	1:B:135:LEU:HD23	1.48	0.93
1:B:63:GLU:HB2	3:D:2203:HOH:O	1.71	0.90
1:A:45:GLU:HB2	1:A:136:LEU:HD21	1.54	0.89
1:C:231:GLU:HG2	3:C:2183:HOH:O	1.77	0.83
1:C:225:GLY:HA3	3:C:2185:HOH:O	1.76	0.83
1:D:309:LEU:HD12	3:D:2240:HOH:O	1.76	0.83
1:B:137:GLU:HB3	1:B:188:ILE:HD12	1.60	0.82
1:C:313:ARG:HD3	3:C:2230:HOH:O	1.83	0.79
1:D:10:LEU:HD12	1:D:55:GLU:HB3	1.64	0.78
1:C:123:PRO:HG2	1:C:126:ALA:HB2	1.66	0.78
1:B:257:VAL:HA	3:B:2190:HOH:O	1.83	0.78
1:A:294:VAL:HG12	3:A:2174[B]:HOH:O	1.86	0.75
1:D:235:ASP:O	1:D:239:GLN:HG2	1.88	0.73
1:B:145:LYS:HD3	1:B:145:LYS:H	1.52	0.72
1:A:101:SER:HB2	3:A:2039[B]:HOH:O	1.91	0.71
1:A:10:LEU:HD23	1:A:55:GLU:HB3	1.73	0.71
1:D:306:LEU:HA	3:D:2240:HOH:O	1.92	0.70
1:D:123:PRO:HG2	1:D:126:ALA:HB2	1.72	0.70
1:D:17:ALA:HB3	1:D:39:LEU:HD23	1.73	0.70
1:D:265:LYS:HD2	3:D:2191:HOH:O	1.91	0.70
1:D:210:ASP:HB3	3:D:2242:HOH:O	1.91	0.70
1:C:250:MET:HG3	3:C:2185:HOH:O	1.91	0.69
1:B:17:ALA:HB2	3:B:2003:HOH:O	1.92	0.69
1:B:260[B]:ILE:HD12	3:B:2190:HOH:O	1.92	0.69
1:A:298[A]:LEU:HD12	1:A:302:HIS:HB3	1.76	0.68
1:A:43:VAL:HG21	1:A:136:LEU:HD23	1.74	0.68
1:B:15:THR:OG1	2:B:350:DAS:HB2	1.93	0.67
1:B:238:ILE:CD1	1:B:265:LYS:HG2	2.25	0.66

Continued on next page...

Continued from previous page...

Atom-1	Atom-2	Interatomic distance (Å)	Clash overlap (Å)
1:B:17:ALA:HB3	3:B:2002:HOH:O	1.94	0.66
1:D:145:LYS:HE2	1:D:145:LYS:H	1.61	0.66
1:A:164:ARG:CZ	1:A:298[B]:LEU:CD2	2.74	0.66
1:A:43:VAL:CG2	1:A:136:LEU:HD23	2.27	0.65
1:A:81:LEU:HA	3:A:2035:HOH:O	1.95	0.65
1:B:10:LEU:HD23	1:B:55:GLU:HB3	1.78	0.65
1:B:39:LEU:HG	3:B:2003:HOH:O	1.95	0.65
1:A:145:LYS:HE2	1:A:146:GLN:HG2	1.77	0.64
1:B:145:LYS:HD3	1:B:145:LYS:N	2.12	0.64
1:C:15:THR:OG1	2:C:350:DAS:HB2	1.97	0.64
1:A:164:ARG:CZ	1:A:298[B]:LEU:HD23	2.28	0.63
1:B:46:VAL:HG22	1:B:136[A]:LEU:HD23	1.79	0.63
1:C:43:VAL:HG11	1:C:135:LEU:HD23	1.80	0.62
1:D:60:MET:CG	1:D:65:MET:HE2	2.30	0.62
1:B:16:ILE:HG23	3:B:2003:HOH:O	1.99	0.62
1:D:145:LYS:CE	1:D:145:LYS:H	2.13	0.62
1:A:123:PRO:HG2	1:A:126:ALA:HB2	1.81	0.62
1:B:137:GLU:HB3	1:B:188:ILE:CD1	2.30	0.62
1:C:4:LEU:HB3	1:C:50:ALA:HA	1.81	0.62
1:C:146:GLN:HG3	3:C:2100:HOH:O	1.99	0.61
1:C:259:GLY:O	1:C:263:MET:HG3	1.99	0.61
1:C:74:SER:HB3	3:C:2029:HOH:O	2.01	0.61
1:A:43:VAL:O	1:A:43:VAL:HG13	2.00	0.61
1:D:269:LYS:HA	1:D:269:LYS:HE3	1.83	0.61
1:A:260:ILE:O	1:A:264:ARG:HG2	2.00	0.61
1:B:133[B]:MET:HE2	1:B:137:GLU:HG3	1.82	0.61
1:C:11:ALA:HA	1:C:92:THR:OG1	2.02	0.60
1:B:233:LEU:HD12	3:B:2168:HOH:O	2.01	0.60
1:B:60[B]:MET:HG2	3:B:2012[B]:HOH:O	2.02	0.60
1:C:256:SER:HB2	3:C:2189:HOH:O	2.00	0.60
1:D:112:ASP:HB2	3:D:2108:HOH:O	2.01	0.60
1:A:64:ASN:HA	3:C:2189:HOH:O	2.02	0.59
1:A:13:GLY:HA2	3:A:2013:HOH:O	2.00	0.59
1:C:75:GLN:HG3	3:C:2029:HOH:O	2.02	0.58
1:B:60[B]:MET:HE2	1:B:64:ASN:HB3	1.84	0.58
1:A:83:ARG:HB3	1:A:85:ASP:OD1	2.03	0.58
1:C:287:ASP:HA	3:C:2208[B]:HOH:O	2.03	0.58
1:B:223:LEU:HB3	3:B:2166[B]:HOH:O	2.02	0.57
1:B:43:VAL:HG13	1:B:43:VAL:O	2.05	0.57
1:D:43:VAL:HG13	1:D:43:VAL:O	2.05	0.57
1:B:13:GLY:HA2	3:B:2014:HOH:O	2.04	0.57

Continued on next page...

Continued from previous page...

Atom-1	Atom-2	Interatomic distance (Å)	Clash overlap (Å)
1:C:68:ASP:HA	3:C:2167:HOH:O	2.04	0.57
1:A:43:VAL:HG11	1:A:135:LEU:HD23	1.87	0.57
1:B:15:THR:HG22	1:B:123:PRO:HA	1.87	0.57
1:D:39:LEU:CD2	1:D:135:LEU:HD22	2.34	0.57
1:C:250:MET:N	3:C:2185:HOH:O	2.35	0.57
1:C:304:ARG:O	1:C:308:MET:HG3	2.05	0.56
1:D:256:SER:N	3:D:2203:HOH:O	2.38	0.56
1:C:230:PRO:HB2	1:C:232:TYR:CD2	2.40	0.56
1:C:310:ALA:HB2	3:C:2219:HOH:O	2.06	0.56
1:A:106:HIS:HA	1:A:152:VAL:HG23	1.87	0.56
1:C:71:LEU:HD23	3:C:2167:HOH:O	2.06	0.56
1:C:133[B]:MET:HE2	1:C:137:GLU:HG3	1.88	0.56
1:C:178:ARG:HD3	3:C:2122:HOH:O	2.06	0.56
1:D:250:MET:HE1	3:D:2203:HOH:O	2.05	0.55
1:D:260:ILE:O	1:D:264:ARG:HG2	2.06	0.55
1:A:145:LYS:HD3	1:A:145:LYS:N	2.22	0.55
1:A:98:VAL:HA	3:A:2039[B]:HOH:O	2.07	0.55
1:D:39:LEU:HD22	1:D:135:LEU:HD22	1.87	0.55
1:A:60:MET:CG	1:A:65:MET:HE2	2.37	0.55
1:D:185:LEU:HG	3:D:2158:HOH:O	2.06	0.54
1:A:15:THR:OG1	2:A:350:DAS:HB2	2.07	0.54
1:D:264:ARG:O	1:D:268:GLU:HG3	2.07	0.54
1:C:61:ALA:HB1	1:C:63:GLU:OE1	2.06	0.54
1:B:238:ILE:HD13	1:B:265:LYS:HG2	1.90	0.54
1:D:55:GLU:OE2	1:D:76:ARG:HD3	2.07	0.54
1:A:163:ALA:O	1:A:302:HIS:HE1	1.91	0.53
1:D:106:HIS:HA	1:D:152:VAL:HG23	1.90	0.53
1:D:60:MET:SD	1:D:65:MET:HE2	2.48	0.53
1:A:233:LEU:HD12	3:A:2144:HOH:O	2.08	0.53
1:A:264:ARG:HG3	1:A:264:ARG:HH11	1.73	0.53
1:C:305:ILE:HD13	1:C:308:MET:HE2	1.88	0.53
1:B:145:LYS:H	1:B:145:LYS:CD	2.20	0.53
1:B:133[B]:MET:HE3	1:B:136[B]:LEU:HB3	1.90	0.53
1:D:76:ARG:NH2	1:D:79:GLU:OE2	2.41	0.53
1:A:48:LYS:HE2	3:A:2007:HOH:O	2.07	0.53
1:A:298[B]:LEU:HD12	1:A:324:PHE:CE2	2.44	0.53
1:D:262:GLY:HA2	3:D:2191:HOH:O	2.08	0.53
1:C:306:LEU:HG	3:C:2219:HOH:O	2.08	0.52
1:C:144:ASP:OD1	1:C:146:GLN:HB2	2.10	0.52
1:A:237:ALA:HA	1:C:232:TYR:OH	2.10	0.52
1:D:43:VAL:CG2	1:D:136:LEU:HD23	2.40	0.52

Continued on next page...

Continued from previous page...

Atom-1	Atom-2	Interatomic distance (Å)	Clash overlap (Å)
1:D:134:ASN:ND2	1:D:157:ASN:H	2.08	0.52
1:A:11:ALA:HA	1:A:92:THR:OG1	2.09	0.51
1:B:123:PRO:HG2	1:B:126:ALA:HB2	1.92	0.51
1:A:286:PRO:HA	1:A:294:VAL:HG11	1.91	0.51
1:C:230:PRO:HG2	1:C:233:LEU:CD2	2.28	0.51
1:A:61:ALA:HB1	1:A:63:GLU:OE1	2.10	0.51
1:B:211:VAL:HG12	1:B:214:LEU:HD12	1.92	0.51
1:C:39:LEU:HD11	1:C:135:LEU:CD2	2.40	0.51
1:D:250:MET:CE	3:D:2203:HOH:O	2.59	0.51
1:B:78:ASN:ND2	3:B:2028:HOH:O	2.43	0.51
1:A:284:VAL:HG12	3:A:2174[B]:HOH:O	2.10	0.50
1:C:235:ASP:O	1:C:239:GLN:HG3	2.11	0.50
1:C:264:ARG:O	1:C:268:GLU:HG3	2.11	0.50
1:D:13:GLY:HA3	3:D:2003:HOH:O	2.11	0.50
1:B:232:TYR:OH	1:D:221:ASP:OD2	2.19	0.50
1:A:319:VAL:HG12	3:A:2204:HOH:O	2.10	0.50
1:A:81:LEU:HD12	3:A:2035:HOH:O	2.11	0.50
1:A:231:GLU:HG2	3:A:2154:HOH:O	2.12	0.50
1:B:259:GLY:O	1:B:263:MET:HG3	2.12	0.50
1:B:36:VAL:O	1:B:40:ILE:HG13	2.12	0.50
1:A:50:ALA:HB3	3:A:2006:HOH:O	2.10	0.49
1:A:5:PRO:O	1:A:50:ALA:HB1	2.12	0.49
1:C:17:ALA:HB3	3:C:2004:HOH:O	2.11	0.49
1:B:10:LEU:CD2	1:B:55:GLU:HB3	2.42	0.49
1:C:110:LYS:HD3	3:C:2059:HOH:O	2.12	0.49
1:A:208[A]:VAL:HG12	1:A:208[A]:VAL:O	2.13	0.49
1:B:300:PRO:HB3	3:B:2228:HOH:O	2.12	0.49
1:B:46:VAL:HG13	1:B:139:VAL:HG11	1.93	0.49
1:D:145:LYS:H	1:D:145:LYS:CD	2.26	0.49
1:A:265:LYS:HD2	3:A:2154:HOH:O	2.12	0.49
1:B:74[B]:SER:OG	3:B:2028:HOH:O	2.20	0.49
1:A:106:HIS:HA	1:A:152:VAL:CG2	2.43	0.48
1:D:313:ARG:NH1	3:D:2242:HOH:O	2.45	0.48
1:D:11:ALA:HA	1:D:92:THR:OG1	2.12	0.48
1:B:17:ALA:HB1	3:B:2004:HOH:O	2.13	0.48
1:C:43:VAL:O	1:C:43:VAL:HG13	2.13	0.48
1:D:206:ARG:HH11	1:D:206:ARG:HG3	1.78	0.48
1:A:145:LYS:HD3	1:A:145:LYS:H	1.78	0.48
1:B:141:VAL:CG2	1:B:188:ILE:HD11	2.42	0.48
1:B:8:VAL:HG11	1:B:80:LEU:HD21	1.95	0.48
1:B:237:ALA:HA	1:D:232:TYR:OH	2.14	0.48

Continued on next page...

Continued from previous page...

Atom-1	Atom-2	Interatomic distance (Å)	Clash overlap (Å)
1:C:140:ARG:HG2	1:C:193:ILE:HD11	1.96	0.48
1:B:46:VAL:CG1	1:B:139:VAL:HG21	2.44	0.48
1:B:5:PRO:O	1:B:50:ALA:HB1	2.14	0.48
1:D:144:ASP:OD1	1:D:146:GLN:HB3	2.14	0.48
1:D:15:THR:HG22	3:D:2005:HOH:O	2.13	0.47
1:C:258:ARG:HG2	3:C:2179:HOH:O	2.13	0.47
1:B:60[B]:MET:HE2	1:B:64:ASN:CB	2.44	0.47
1:A:145:LYS:CE	1:A:146:GLN:HG2	2.42	0.47
1:B:61:ALA:HB1	1:B:63:GLU:OE1	2.15	0.47
1:B:246:VAL:HG11	3:B:2228:HOH:O	2.15	0.47
2:A:350:DAS:OD2	2:A:350:DAS:C	2.62	0.46
1:A:4:LEU:HB3	1:A:50:ALA:HA	1.96	0.46
1:B:83:ARG:HB3	1:B:85:ASP:OD1	2.15	0.46
1:D:313:ARG:HD3	3:D:2171:HOH:O	2.15	0.46
3:B:2139:HOH:O	1:C:198:ARG:HD2	2.14	0.46
1:D:110:LYS:HE2	1:D:207:SER:O	2.15	0.46
1:A:299:ASN:OD1	1:A:302:HIS:HD2	1.98	0.46
1:D:134:ASN:HD21	1:D:157:ASN:H	1.64	0.46
1:D:256:SER:HB3	3:D:2203:HOH:O	2.15	0.46
2:C:350:DAS:OD2	2:C:350:DAS:C	2.63	0.46
1:B:11:ALA:HA	1:B:92:THR:OG1	2.15	0.46
1:C:133[B]:MET:HE3	1:C:136:LEU:HB3	1.98	0.46
1:A:71:LEU:O	1:A:75:GLN:HG3	2.15	0.46
2:B:350:DAS:C	2:B:350:DAS:OD2	2.64	0.46
1:C:256:SER:O	1:C:260:ILE:HG12	2.16	0.46
1:D:234:TYR:O	1:D:238:ILE:HG13	2.16	0.46
1:C:14:GLY:HA2	2:C:350:DAS:CG	2.46	0.46
1:B:46:VAL:HG12	1:B:52:VAL:HG21	1.97	0.45
1:C:5:PRO:O	1:C:50:ALA:HB1	2.16	0.45
1:B:15:THR:CG2	1:B:123:PRO:HA	2.46	0.45
1:A:264:ARG:NH1	1:A:264:ARG:HG3	2.32	0.45
1:B:60[B]:MET:HE1	3:B:2020:HOH:O	2.15	0.45
1:D:43:VAL:O	1:D:46:VAL:HG22	2.17	0.45
1:A:43:VAL:O	1:A:46:VAL:HG22	2.16	0.45
1:B:16:ILE:HG22	3:B:2001:HOH:O	2.16	0.45
1:C:39:LEU:HD13	1:C:39:LEU:C	2.36	0.45
1:D:10:LEU:HD21	1:D:76:ARG:HG2	1.98	0.45
1:D:37:ASP:HB2	3:D:2006:HOH:O	2.17	0.45
1:D:46:VAL:HG12	1:D:136:LEU:HD22	1.98	0.45
1:D:313:ARG:CZ	3:D:2245:HOH:O	2.64	0.45
1:A:60:MET:HB3	3:A:2014:HOH:O	2.17	0.45

Continued on next page...

Continued from previous page...

Atom-1	Atom-2	Interatomic distance (Å)	Clash overlap (Å)
1:B:46:VAL:HG13	1:B:139:VAL:HG21	1.98	0.45
1:D:61:ALA:HB1	1:D:63:GLU:OE1	2.17	0.45
1:D:230:PRO:HB2	1:D:232:TYR:CD2	2.51	0.44
1:D:219:LYS:HD3	3:D:2176:HOH:O	2.18	0.44
1:D:60:MET:HG2	1:D:65:MET:HE2	1.98	0.44
1:B:313:ARG:HH11	1:B:313:ARG:HG2	1.83	0.44
1:C:39:LEU:HD11	1:C:135:LEU:HD22	1.98	0.44
1:D:43:VAL:HG21	1:D:136:LEU:HD23	1.99	0.44
1:C:7:ILE:O	1:C:52:VAL:HA	2.18	0.44
1:D:145:LYS:HD3	1:D:145:LYS:N	2.33	0.44
1:D:264:ARG:HG3	1:D:264:ARG:HH11	1.82	0.44
1:D:45:GLU:HB2	1:D:136:LEU:HD21	2.00	0.44
1:B:285:PRO:O	1:B:294:VAL:HG11	2.19	0.43
1:A:234:TYR:O	1:A:238:ILE:HG13	2.19	0.43
1:B:175:ASP:OD2	1:B:178:ARG:NH2	2.51	0.43
1:C:232:TYR:CE1	1:C:233:LEU:HD22	2.53	0.43
1:C:243:LYS:HB3	1:C:311:LEU:HD13	1.99	0.43
1:A:86:VAL:HG12	3:A:2035:HOH:O	2.17	0.43
1:D:39:LEU:HD11	1:D:92:THR:HG21	2.01	0.43
1:D:39:LEU:HD22	1:D:135:LEU:CD2	2.47	0.43
1:A:110:LYS:HE3	1:A:207:SER:O	2.19	0.43
1:D:62:SER:HB3	1:D:94:GLY:HA3	2.01	0.43
1:A:176:THR:HG23	1:A:177:PHE:CD1	2.54	0.43
1:A:49:LEU:HD11	1:A:136:LEU:HD13	2.00	0.42
1:C:53:LYS:HG2	3:C:2012:HOH:O	2.19	0.42
1:B:219:LYS:HE2	1:B:219:LYS:HB3	1.86	0.42
1:B:65:MET:HE1	3:B:2012[B]:HOH:O	2.19	0.42
1:B:76:ARG:CZ	1:B:80:LEU:HD13	2.49	0.42
1:C:140:ARG:NH1	3:C:2085:HOH:O	2.47	0.42
1:C:106:HIS:HA	1:C:152:VAL:HG23	2.00	0.42
1:D:145:LYS:CD	1:D:145:LYS:N	2.82	0.42
1:A:60:MET:SD	1:A:65:MET:HE2	2.60	0.42
1:B:76:ARG:NH1	1:B:79:GLU:OE2	2.52	0.42
1:D:210:ASP:HA	3:D:2168:HOH:O	2.18	0.42
1:A:137:GLU:OE2	1:A:158:ASP:OD1	2.38	0.42
1:D:137:GLU:OE2	1:D:158:ASP:OD1	2.37	0.42
1:A:284:VAL:CG1	3:A:2174[B]:HOH:O	2.68	0.42
1:D:106:HIS:HA	1:D:152:VAL:CG2	2.49	0.42
1:A:81:LEU:HG	1:A:113:LYS:HB2	2.02	0.42
1:B:304:ARG:O	1:B:308[A]:MET:HG3	2.20	0.42
1:C:39:LEU:HD21	1:C:135:LEU:HD22	2.02	0.42

Continued on next page...

Continued from previous page...

Atom-1	Atom-2	Interatomic distance (Å)	Clash overlap (Å)
1:A:304:ARG:NH2	1:C:228:ASP:HB2	2.35	0.42
1:A:110:LYS:HE2	3:A:2130:HOH:O	2.18	0.42
1:B:211:VAL:CG1	1:B:214:LEU:HD12	2.50	0.42
1:C:234:TYR:O	1:C:238:ILE:HG13	2.20	0.42
1:A:275:ARG:NH1	3:A:2174[B]:HOH:O	2.52	0.41
1:B:212:ARG:NH2	3:B:2155:HOH:O	2.52	0.41
1:A:81:LEU:HD23	1:A:111:SER:HB3	2.01	0.41
1:B:283:ILE:HD13	1:B:297:SER:HB3	2.01	0.41
1:C:39:LEU:CD1	1:C:135:LEU:CD2	2.98	0.41
1:A:239:GLN:HB3	3:A:2156:HOH:O	2.19	0.41
1:B:15:THR:HG1	2:B:350:DAS:HB2	1.82	0.41
1:B:246:VAL:CG1	3:B:2228:HOH:O	2.67	0.41
1:C:264:ARG:HH11	1:C:264:ARG:HG3	1.84	0.41
1:D:259:GLY:O	1:D:263:MET:HG3	2.19	0.41
1:D:246:VAL:HG21	1:D:304:ARG:HA	2.02	0.41
1:A:145:LYS:H	1:A:145:LYS:CD	2.33	0.41
1:A:14:GLY:N	3:A:2015:HOH:O	2.54	0.41
1:A:163:ALA:O	1:A:302:HIS:CE1	2.72	0.41
1:A:49:LEU:HD11	1:A:136:LEU:CD1	2.50	0.41
1:B:137:GLU:OE2	1:B:158:ASP:OD1	2.38	0.41
1:C:36:VAL:O	1:C:40:ILE:HG13	2.19	0.41
1:A:14:GLY:HA2	2:A:350:DAS:CG	2.51	0.41
1:A:81:LEU:HD11	1:A:89:VAL:HG23	2.02	0.41
1:B:9:ILE:HD12	1:B:52:VAL:HG11	2.03	0.41
1:D:140:ARG:NH1	3:D:2099:HOH:O	2.54	0.41
1:D:71:LEU:HD21	1:D:211:VAL:HB	2.02	0.41
1:D:71:LEU:O	1:D:75:GLN:HG3	2.21	0.41
1:A:247:TYR:CZ	1:A:249:GLY:HA2	2.56	0.40
1:A:9:ILE:HD12	1:A:52:VAL:HG11	2.03	0.40
1:B:46:VAL:CG2	1:B:136[A]:LEU:HD23	2.49	0.40
1:C:175:ASP:OD2	1:C:178:ARG:NH2	2.55	0.40
3:B:2116:HOH:O	1:C:183:GLY:HA2	2.21	0.40
1:A:233:LEU:HD22	1:C:233:LEU:HD12	2.03	0.40
1:D:222:ILE:HG12	1:D:246:VAL:HB	2.03	0.40
1:D:222:ILE:HA	1:D:246:VAL:O	2.22	0.40
1:C:322:GLU:HA	1:C:322:GLU:OE1	2.22	0.40
1:D:39:LEU:O	1:D:43:VAL:HG12	2.21	0.40
1:A:15:THR:HG22	1:A:123:PRO:HA	2.02	0.40
1:C:145:LYS:HD3	1:C:145:LYS:HA	1.96	0.40
1:C:62:SER:HB3	1:C:94:GLY:HA3	2.03	0.40

There are no symmetry-related clashes.

5.3 Torsion angles [i](#)

5.3.1 Protein backbone [i](#)

In the following table, the Percentiles column shows the percent Ramachandran outliers of the chain as a percentile score with respect to all X-ray entries followed by that with respect to entries of similar resolution.

The Analysed column shows the number of residues for which the backbone conformation was analysed, and the total number of residues.

Mol	Chain	Analysed	Favoured	Allowed	Outliers	Percentiles	
1	A	304/327 (93%)	296 (97%)	7 (2%)	1 (0%)	41	27
1	B	311/327 (95%)	306 (98%)	4 (1%)	1 (0%)	41	27
1	C	307/327 (94%)	301 (98%)	6 (2%)	0	100	100
1	D	308/327 (94%)	301 (98%)	6 (2%)	1 (0%)	41	27
All	All	1230/1308 (94%)	1204 (98%)	23 (2%)	3 (0%)	47	33

All (3) Ramachandran outliers are listed below:

Mol	Chain	Res	Type
1	A	204	THR
1	D	204	THR
1	B	204	THR

5.3.2 Protein sidechains [i](#)

In the following table, the Percentiles column shows the percent sidechain outliers of the chain as a percentile score with respect to all X-ray entries followed by that with respect to entries of similar resolution.

The Analysed column shows the number of residues for which the sidechain conformation was analysed, and the total number of residues.

Mol	Chain	Analysed	Rotameric	Outliers	Percentiles	
1	A	255/264 (97%)	248 (97%)	7 (3%)	44	31
1	B	261/264 (99%)	256 (98%)	5 (2%)	57	46
1	C	256/264 (97%)	250 (98%)	6 (2%)	50	37
1	D	257/264 (97%)	251 (98%)	6 (2%)	50	37
All	All	1029/1056 (97%)	1005 (98%)	24 (2%)	49	37

All (24) residues with a non-rotameric sidechain are listed below:

Mol	Chain	Res	Type
1	A	45	GLU
1	A	71	LEU
1	A	136	LEU
1	A	145	LYS
1	A	235	ASP
1	A	288	GLU
1	A	293	LEU
1	B	39	LEU
1	B	80	LEU
1	B	110	LYS
1	B	145	LYS
1	B	239	GLN
1	C	51	ASN
1	C	146	GLN
1	C	206	ARG
1	C	258	ARG
1	C	288	GLU
1	C	322	GLU
1	D	39	LEU
1	D	71	LEU
1	D	76	ARG
1	D	136	LEU
1	D	185	LEU
1	D	269	LYS

Some sidechains can be flipped to improve hydrogen bonding and reduce clashes. All (10) such sidechains are listed below:

Mol	Chain	Res	Type
1	A	227	GLN
1	A	302	HIS
1	B	146	GLN
1	C	41	ASN
1	C	227	GLN
1	C	239	GLN
1	D	6	ASN
1	D	51	ASN
1	D	134	ASN
1	D	146	GLN

5.3.3 RNA [i](#)

There are no RNA molecules in this entry.

5.4 Non-standard residues in protein, DNA, RNA chains [i](#)

There are no non-standard protein/DNA/RNA residues in this entry.

5.5 Carbohydrates [i](#)

There are no carbohydrates in this entry.

5.6 Ligand geometry [i](#)

4 ligands are modelled in this entry.

There are no bond length outliers.

There are no bond angle outliers.

There are no chirality outliers.

There are no torsion outliers.

There are no ring outliers.

No monomer is involved in short contacts.

5.7 Other polymers [i](#)

There are no such residues in this entry.

5.8 Polymer linkage issues [i](#)

There are no chain breaks in this entry.

6 Fit of model and data

6.1 Protein, DNA and RNA chains

In the following table, the column labelled ‘#RSRZ> 2’ contains the number (and percentage) of RSRZ outliers, followed by percent RSRZ outliers for the chain as percentile scores relative to all X-ray entries and entries of similar resolution. The OWAB column contains the minimum, median, 95th percentile and maximum values of the occupancy-weighted average B-factor per residue. The column labelled ‘Q< 0.9’ lists the number of (and percentage) of residues with an average occupancy less than 0.9.

Mol	Chain	Analysed	<RSRZ>	#RSRZ>2	OWAB(Å ²)	Q<0.9
1	A	306/327 (93%)	0.07	18 (5%) 22 17	10, 19, 37, 43	1 (0%)
1	B	307/327 (93%)	-0.10	14 (4%) 32 26	8, 15, 33, 44	1 (0%)
1	C	309/327 (94%)	0.02	13 (4%) 36 30	9, 18, 35, 44	1 (0%)
1	D	309/327 (94%)	-0.26	5 (1%) 72 68	6, 14, 32, 44	1 (0%)
All	All	1231/1308 (94%)	-0.07	50 (4%) 37 31	6, 17, 35, 44	4 (0%)

All (50) RSRZ outliers are listed below:

Mol	Chain	Res	Type	RSRZ
1	B	17	ALA	6.5
1	C	18	GLY	5.7
1	D	19	SER	5.7
1	C	34	LEU	4.9
1	B	15	THR	4.7
1	B	16	ILE	4.1
1	B	125	THR	4.0
1	C	17	ALA	4.0
1	C	39	LEU	4.0
1	A	213	GLY	3.8
1	B	35	GLY	3.7
1	C	288	GLU	3.7
1	D	212	ARG	3.7
1	A	212	ARG	3.7
1	A	35	GLY	3.4
1	B	4	LEU	3.4
1	A	37	ASP	3.4
1	A	39	LEU	3.3
1	D	288	GLU	3.2
1	B	48	LYS	3.1
1	A	15	THR	3.0

Continued on next page...

Continued from previous page...

Mol	Chain	Res	Type	RSRZ
1	C	35	GLY	2.9
1	C	37	ASP	2.9
1	A	41	ASN	2.9
1	A	38	THR	2.8
1	B	38	THR	2.8
1	C	289	GLU	2.7
1	A	13	GLY	2.7
1	A	4	LEU	2.6
1	B	212	ARG	2.5
1	C	239	GLN	2.4
1	A	268	GLU	2.4
1	A	288	GLU	2.3
1	A	47	LYS	2.3
1	B	127	ILE	2.3
1	B	213	GLY	2.3
1	C	38	THR	2.3
1	B	145	LYS	2.2
1	B	288	GLU	2.2
1	C	268	GLU	2.2
1	B	14	GLY	2.1
1	C	41	ASN	2.1
1	C	84	ASP	2.1
1	A	16	ILE	2.1
1	A	145	LYS	2.1
1	D	41	ASN	2.1
1	A	43	VAL	2.1
1	A	44	PRO	2.1
1	D	44	PRO	2.0
1	A	289	GLU	2.0

6.2 Non-standard residues in protein, DNA, RNA chains [i](#)

There are no non-standard protein/DNA/RNA residues in this entry.

6.3 Carbohydrates [i](#)

There are no carbohydrates in this entry.

6.4 Ligands [i](#)

In the following table, the Atoms column lists the number of modelled atoms in the group and the number defined in the chemical component dictionary. The B-factors column lists the minimum, median, 95th percentile and maximum values of B factors of atoms in the group. The column labelled 'Q< 0.9' lists the number of atoms with occupancy less than 0.9.

Mol	Type	Chain	Res	Atoms	RSCC	RSR	B-factors(Å ²)	Q<0.9
2	DAS	A	350	9/9	0.78	0.16	23,24,29,30	0
2	DAS	C	350	9/9	0.83	0.15	22,23,27,27	0
2	DAS	B	350	9/9	0.85	0.15	16,17,23,25	0
2	DAS	D	350	9/9	0.94	0.09	13,14,18,21	0

6.5 Other polymers [i](#)

There are no such residues in this entry.