



# Full wwPDB X-ray Structure Validation Report ⓘ

Feb 18, 2024 – 08:34 PM EST

PDB ID : 4HI4  
Title : Crystal structure of the 5-coordinate ferric heme-binding PAS domain of Aer2 from *P. aeruginosa*  
Authors : Airola, M.V.; Crane, B.R.  
Deposited on : 2012-10-11  
Resolution : 2.30 Å (reported)

This is a Full wwPDB X-ray Structure Validation Report for a publicly released PDB entry.

We welcome your comments at [validation@mail.wwpdb.org](mailto:validation@mail.wwpdb.org)

A user guide is available at

<https://www.wwpdb.org/validation/2017/XrayValidationReportHelp>

with specific help available everywhere you see the ⓘ symbol.

The types of validation reports are described at

<http://www.wwpdb.org/validation/2017/FAQs#types>.

---

The following versions of software and data (see [references ⓘ](#)) were used in the production of this report:

MolProbity : 4.02b-467  
Mogul : 1.8.5 (274361), CSD as541be (2020)  
Xtriage (Phenix) : 1.13  
EDS : 2.36  
buster-report : 1.1.7 (2018)  
Percentile statistics : 20191225.v01 (using entries in the PDB archive December 25th 2019)  
Refmac : 5.8.0158  
CCP4 : 7.0.044 (Gargrove)  
Ideal geometry (proteins) : Engh & Huber (2001)  
Ideal geometry (DNA, RNA) : Parkinson et al. (1996)  
Validation Pipeline (wwPDB-VP) : 2.36

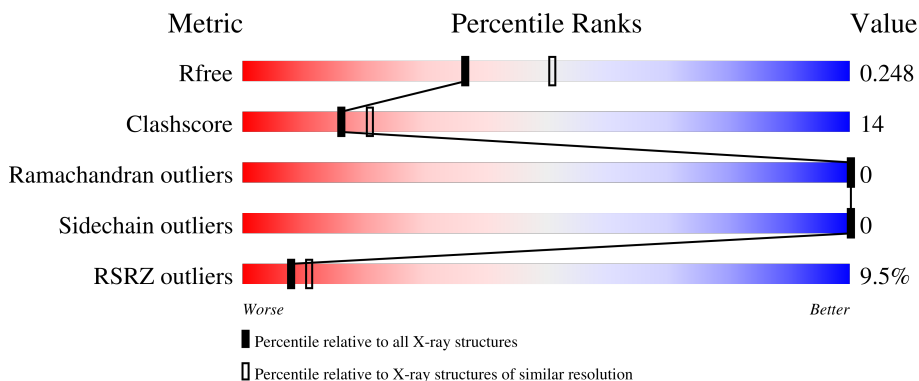
# 1 Overall quality at a glance

The following experimental techniques were used to determine the structure:

*X-RAY DIFFRACTION*


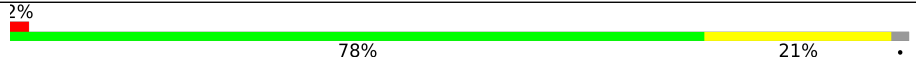
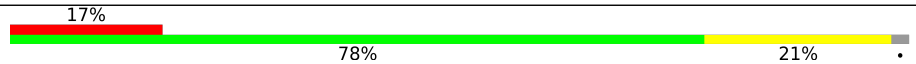

The reported resolution of this entry is 2.30 Å.

Percentile scores (ranging between 0-100) for global validation metrics of the entry are shown in the following graphic. The table shows the number of entries on which the scores are based.



Metric	Whole archive (#Entries)	Similar resolution (#Entries, resolution range(Å))
$R_{free}$	130704	5042 (2.30-2.30)
Clashscore	141614	5643 (2.30-2.30)
Ramachandran outliers	138981	5575 (2.30-2.30)
Sidechain outliers	138945	5575 (2.30-2.30)
RSRZ outliers	127900	4938 (2.30-2.30)

The table below summarises the geometric issues observed across the polymeric chains and their fit to the electron density. The red, orange, yellow and green segments of the lower bar indicate the fraction of residues that contain outliers for  $\geq 3$ , 2, 1 and 0 types of geometric quality criteria respectively. A grey segment represents the fraction of residues that are not modelled. The numeric value for each fraction is indicated below the corresponding segment, with a dot representing fractions  $\leq 5\%$ . The upper red bar (where present) indicates the fraction of residues that have poor fit to the electron density. The numeric value is given above the bar.

Mol	Chain	Length	Quality of chain
1	A	121	 2% 78% 21%
1	B	121	 2% 78% 21%
1	D	121	 17% 78% 21%
1	G	121	 16% 81% 17%

## 2 Entry composition

There are 5 unique types of molecules in this entry. The entry contains 4101 atoms, of which 152 are hydrogens and 0 are deuteriums.

In the tables below, the ZeroOcc column contains the number of atoms modelled with zero occupancy, the AltConf column contains the number of residues with at least one atom in alternate conformation and the Trace column contains the number of residues modelled with at most 2 atoms.

- Molecule 1 is a protein called Aerotaxis transducer Aer2.

Mol	Chain	Residues	Atoms					ZeroOcc	AltConf	Trace
			Total	C	N	O	S			
1	A	119	918	566	178	169	5	0	0	0
1	B	119	918	566	178	169	5	0	0	0
1	D	119	923	569	179	170	5	0	1	0
1	G	119	926	570	180	171	5	0	1	0

There are 28 discrepancies between the modelled and reference sequences:

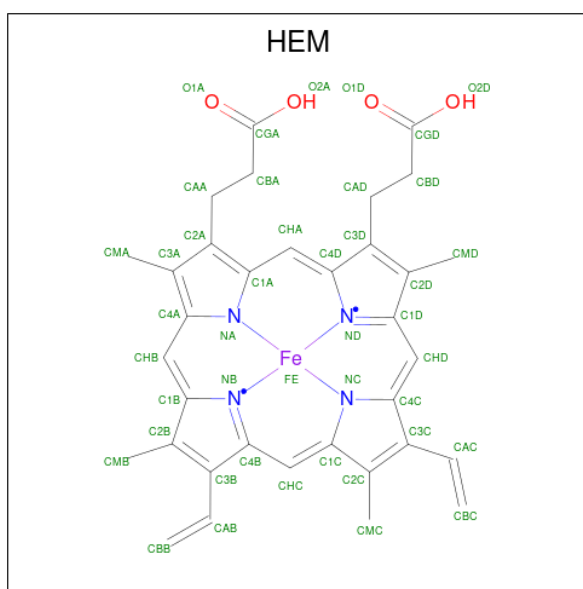
Chain	Residue	Modelled	Actual	Comment	Reference
A	169	GLY	-	expression tag	UNP Q9I6V6
A	170	SER	-	expression tag	UNP Q9I6V6
A	171	HIS	-	expression tag	UNP Q9I6V6
A	172	MET	-	expression tag	UNP Q9I6V6
A	173	ALA	-	expression tag	UNP Q9I6V6
A	176	ALA	LYS	engineered mutation	UNP Q9I6V6
A	275	ALA	GLU	engineered mutation	UNP Q9I6V6
B	169	GLY	-	expression tag	UNP Q9I6V6
B	170	SER	-	expression tag	UNP Q9I6V6
B	171	HIS	-	expression tag	UNP Q9I6V6
B	172	MET	-	expression tag	UNP Q9I6V6
B	173	ALA	-	expression tag	UNP Q9I6V6
B	176	ALA	LYS	engineered mutation	UNP Q9I6V6
B	275	ALA	GLU	engineered mutation	UNP Q9I6V6
D	169	GLY	-	expression tag	UNP Q9I6V6
D	170	SER	-	expression tag	UNP Q9I6V6
D	171	HIS	-	expression tag	UNP Q9I6V6
D	172	MET	-	expression tag	UNP Q9I6V6
D	173	ALA	-	expression tag	UNP Q9I6V6
D	176	ALA	LYS	engineered mutation	UNP Q9I6V6
D	275	ALA	GLU	engineered mutation	UNP Q9I6V6

*Continued on next page...*

Continued from previous page...

Chain	Residue	Modelled	Actual	Comment	Reference
G	169	GLY	-	expression tag	UNP Q9I6V6
G	170	SER	-	expression tag	UNP Q9I6V6
G	171	HIS	-	expression tag	UNP Q9I6V6
G	172	MET	-	expression tag	UNP Q9I6V6
G	173	ALA	-	expression tag	UNP Q9I6V6
G	176	ALA	LYS	engineered mutation	UNP Q9I6V6
G	275	ALA	GLU	engineered mutation	UNP Q9I6V6

- Molecule 2 is PROTOPORPHYRIN IX CONTAINING FE (three-letter code: HEM) (formula:  $C_{34}H_{32}FeN_4O_4$ ).



Mol	Chain	Residues	Atoms					ZeroOcc	AltConf	
2	A	1	Total	C	Fe	H	N	O	0	0
			73	34	1	30	4	4		
2	B	1	Total	C	Fe	H	N	O	0	0
			73	34	1	30	4	4		
2	D	1	Total	C	Fe	H	N	O	0	0
			73	34	1	30	4	4		
2	G	1	Total	C	Fe	H	N	O	0	0
			73	34	1	30	4	4		

- Molecule 3 is CHLORIDE ION (three-letter code: CL) (formula: Cl).

Mol	Chain	Residues	Atoms		ZeroOcc	AltConf
3	A	1	Total	Cl	0	0
			1	1		

- Molecule 4 is GLYCEROL (three-letter code: GOL) (formula: C<sub>3</sub>H<sub>8</sub>O<sub>3</sub>).



Mol	Chain	Residues	Atoms				ZeroOcc	AltConf
4	B	1	Total	C	H	O	0	0
			14	3	8	3		
4	D	1	Total	C	H	O	0	0
			14	3	8	3		
4	G	1	Total	C	H	O	0	0
			14	3	8	3		
4	G	1	Total	C	H	O	0	0
			14	3	8	3		

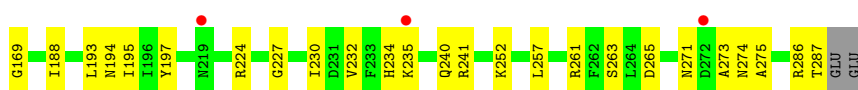
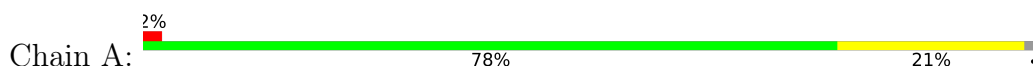
- Molecule 5 is water.

Mol	Chain	Residues	Atoms		ZeroOcc	AltConf
5	A	19	Total	O	0	0
			19	19		
5	B	21	Total	O	0	0
			21	21		
5	D	16	Total	O	0	0
			16	16		
5	G	11	Total	O	0	0
			11	11		

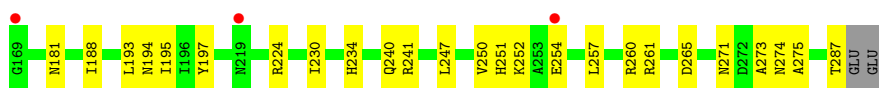
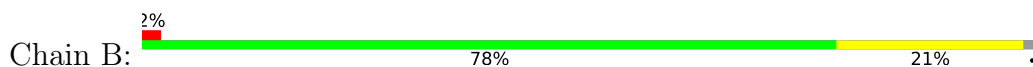
### 3 Residue-property plots i

These plots are drawn for all protein, RNA, DNA and oligosaccharide chains in the entry. The first graphic for a chain summarises the proportions of the various outlier classes displayed in the second graphic. The second graphic shows the sequence view annotated by issues in geometry and electron density. Residues are color-coded according to the number of geometric quality criteria for which they contain at least one outlier: green = 0, yellow = 1, orange = 2 and red = 3 or more. A red dot above a residue indicates a poor fit to the electron density ( $RSRZ > 2$ ). Stretches of 2 or more consecutive residues without any outlier are shown as a green connector. Residues present in the sample, but not in the model, are shown in grey.

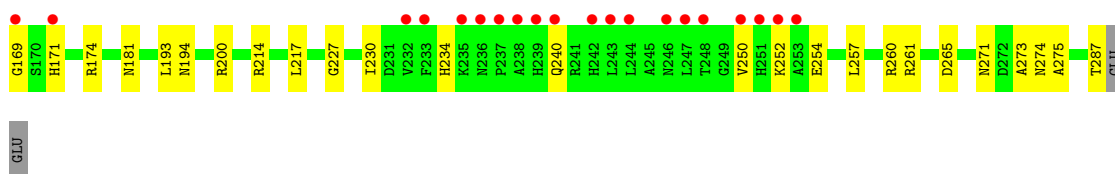
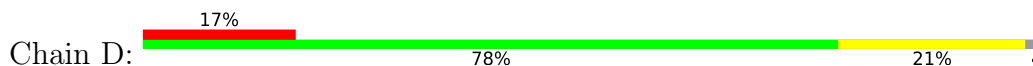
- Molecule 1: Aerotaxis transducer Aer2



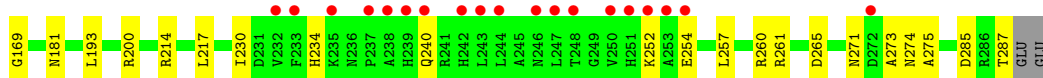
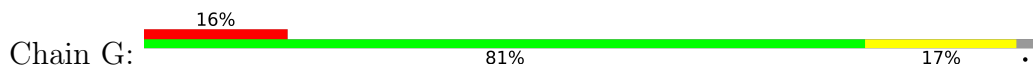
- Molecule 1: Aerotaxis transducer Aer2



- Molecule 1: Aerotaxis transducer Aer2



- Molecule 1: Aerotaxis transducer Aer2



## 4 Data and refinement statistics i

Property	Value	Source
Space group	P 21 21 21	Depositor
Cell constants a, b, c, $\alpha$ , $\beta$ , $\gamma$	67.36Å 67.44Å 117.87Å 90.00° 90.00° 90.00°	Depositor
Resolution (Å)	44.38 – 2.30 44.38 – 2.30	Depositor EDS
% Data completeness (in resolution range)	99.6 (44.38-2.30) 95.3 (44.38-2.30)	Depositor EDS
$R_{merge}$	0.07	Depositor
$R_{sym}$	(Not available)	Depositor
$\langle I/\sigma(I) \rangle$ <sup>1</sup>	6.44 (at 2.32Å)	Xtrriage
Refinement program	PHENIX 1.8_1069	Depositor
R, $R_{free}$	0.228 , 0.248 0.230 , 0.248	Depositor DCC
$R_{free}$ test set	1989 reflections (8.17%)	wwPDB-VP
Wilson B-factor (Å <sup>2</sup> )	26.8	Xtrriage
Anisotropy	0.429	Xtrriage
Bulk solvent $k_{sol}$ (e/Å <sup>3</sup> ), $B_{sol}$ (Å <sup>2</sup> )	0.33 , 3.7	EDS
L-test for twinning <sup>2</sup>	$\langle  L  \rangle = 0.50$ , $\langle L^2 \rangle = 0.33$	Xtrriage
Estimated twinning fraction	0.480 for k,h,-l	Xtrriage
$F_o, F_c$ correlation	0.91	EDS
Total number of atoms	4101	wwPDB-VP
Average B, all atoms (Å <sup>2</sup> )	22.0	wwPDB-VP

Xtrriage's analysis on translational NCS is as follows: *The largest off-origin peak in the Patterson function is 8.91% of the height of the origin peak. No significant pseudotranslation is detected.*

<sup>1</sup>Intensities estimated from amplitudes.

<sup>2</sup>Theoretical values of  $\langle |L| \rangle$ ,  $\langle L^2 \rangle$  for acentric reflections are 0.5, 0.333 respectively for untwinned datasets, and 0.375, 0.2 for perfectly twinned datasets.

## 5 Model quality [i](#)

### 5.1 Standard geometry [i](#)

Bond lengths and bond angles in the following residue types are not validated in this section: CL, GOL, HEM

The Z score for a bond length (or angle) is the number of standard deviations the observed value is removed from the expected value. A bond length (or angle) with  $|Z| > 5$  is considered an outlier worth inspection. RMSZ is the root-mean-square of all Z scores of the bond lengths (or angles).

Mol	Chain	Bond lengths		Bond angles	
		RMSZ	# Z  >5	RMSZ	# Z  >5
1	A	0.45	0/932	0.59	0/1260
1	B	0.44	0/932	0.58	0/1260
1	D	0.39	0/940	0.53	0/1271
1	G	0.39	0/940	0.53	0/1271
All	All	0.42	0/3744	0.56	0/5062

There are no bond length outliers.

There are no bond angle outliers.

There are no chirality outliers.

There are no planarity outliers.

### 5.2 Too-close contacts [i](#)

In the following table, the Non-H and H(model) columns list the number of non-hydrogen atoms and hydrogen atoms in the chain respectively. The H(added) column lists the number of hydrogen atoms added and optimized by MolProbity. The Clashes column lists the number of clashes within the asymmetric unit, whereas Symm-Clashes lists symmetry-related clashes.

Mol	Chain	Non-H	H(model)	H(added)	Clashes	Symm-Clashes
1	A	918	0	910	26	0
1	B	918	0	910	21	1
1	D	923	0	916	35	0
1	G	926	0	915	29	1
2	A	43	30	30	6	0
2	B	43	30	30	6	0
2	D	43	30	30	14	0
2	G	43	30	30	12	0
3	A	1	0	0	0	0

*Continued on next page...*



Continued from previous page...

Mol	Chain	Non-H	H(model)	H(added)	Clashes	Symm-Clashes
4	B	6	8	8	0	0
4	D	6	8	8	1	0
4	G	12	16	16	0	0
5	A	19	0	0	0	0
5	B	21	0	0	1	0
5	D	16	0	0	4	0
5	G	11	0	0	0	0
All	All	3949	152	3803	111	1

The all-atom clashscore is defined as the number of clashes found per 1000 atoms (including hydrogen atoms). The all-atom clashscore for this structure is 14.

All (111) close contacts within the same asymmetric unit are listed below, sorted by their clash magnitude.

Atom-1	Atom-2	Interatomic distance (Å)	Clash overlap (Å)
1:G:271:ASN:HD21	1:G:275:ALA:HB3	1.43	0.83
1:D:254:GLU:OE2	5:D:411:HOH:O	1.96	0.83
1:D:271:ASN:HD21	1:D:275:ALA:HB3	1.45	0.82
1:D:261:ARG:H	1:D:287:THR:HG23	1.44	0.81
1:G:261:ARG:H	1:G:287:THR:HG23	1.47	0.80
1:D:257:LEU:HD21	2:D:301:HEM:HMA2	1.67	0.77
1:G:257:LEU:HD21	2:G:301:HEM:HMA2	1.66	0.76
1:G:271:ASN:ND2	1:G:275:ALA:HB3	2.01	0.74
1:D:261:ARG:H	1:D:287:THR:CG2	2.00	0.74
1:A:169:GLY:HA3	1:D:194:ASN:OD1	1.88	0.73
1:A:235:LYS:CE	1:G:252:LYS:HD3	2.19	0.72
1:D:271:ASN:ND2	1:D:275:ALA:HB3	2.05	0.71
1:A:169:GLY:N	1:D:227:GLY:O	2.25	0.70
1:G:261:ARG:H	1:G:287:THR:CG2	2.04	0.69
2:D:301:HEM:HBC2	2:D:301:HEM:HMC1	1.75	0.68
2:A:301:HEM:HHC	2:A:301:HEM:HBB2	1.76	0.67
1:A:235:LYS:CD	1:G:252:LYS:HD3	2.26	0.65
1:B:254:GLU:OE2	1:B:261:ARG:NH1	2.30	0.65
1:D:214:ARG:HA	1:D:217:LEU:O	1.97	0.65
1:G:214:ARG:HA	1:G:217:LEU:O	1.98	0.64
2:G:301:HEM:HMC1	2:G:301:HEM:HBC2	1.79	0.64
1:D:171:HIS:NE2	4:D:302:GOL:H12	2.13	0.64
1:B:193:LEU:HD13	1:B:230:ILE:HD11	1.81	0.63
1:A:235:LYS:HD3	1:G:252:LYS:HD3	1.82	0.61
1:A:193:LEU:HD13	1:A:230:ILE:HD11	1.83	0.61
1:B:224:ARG:NH1	5:B:415:HOH:O	2.33	0.60

Continued on next page...

*Continued from previous page...*

Atom-1	Atom-2	Interatomic distance (Å)	Clash overlap (Å)
2:B:301:HEM:HHC	2:B:301:HEM:HBB2	1.84	0.59
1:G:181[A]:ASN:OD1	1:G:200:ARG:NE	2.36	0.59
1:D:181[A]:ASN:OD1	1:D:200:ARG:NE	2.36	0.59
1:D:261:ARG:HD2	5:D:411:HOH:O	2.03	0.59
1:D:261:ARG:NH1	5:D:411:HOH:O	1.99	0.58
1:A:194:ASN:OD1	1:D:169:GLY:HA3	2.03	0.58
1:G:193:LEU:HD13	1:G:230:ILE:HD11	1.86	0.58
1:G:260:ARG:HA	1:G:287:THR:HG21	1.86	0.58
1:G:240:GLN:HE21	2:G:301:HEM:CAD	2.17	0.57
1:D:260:ARG:HA	1:D:287:THR:HG21	1.86	0.56
1:A:224:ARG:NE	1:B:274:ASN:OD1	2.39	0.56
1:D:240:GLN:NE2	2:D:301:HEM:HAD2	2.21	0.56
1:G:193:LEU:HB3	1:G:230:ILE:HG12	1.89	0.55
1:B:261:ARG:H	1:B:287:THR:HG23	1.73	0.54
1:A:240:GLN:HE21	2:A:301:HEM:CHA	2.20	0.54
2:A:301:HEM:HHC	2:A:301:HEM:CBB	2.36	0.54
1:D:240:GLN:HE21	2:D:301:HEM:CAD	2.20	0.54
1:G:252:LYS:HE2	1:G:265:ASP:OD1	2.08	0.54
1:A:235:LYS:HE2	1:G:252:LYS:HD3	1.89	0.53
1:D:193:LEU:HB3	1:D:230:ILE:HG12	1.91	0.53
1:D:193:LEU:HD13	1:D:230:ILE:HD11	1.91	0.53
1:D:234:HIS:CE1	1:D:240:GLN:HG2	2.44	0.53
1:A:227:GLY:O	1:D:169:GLY:N	2.42	0.52
1:A:261:ARG:H	1:A:287:THR:HG23	1.74	0.52
2:B:301:HEM:HHC	2:B:301:HEM:CBB	2.40	0.50
2:D:301:HEM:CMD	2:D:301:HEM:CBD	2.90	0.50
1:A:232:VAL:O	1:G:254:GLU:OE1	2.30	0.49
1:B:240:GLN:HE21	2:B:301:HEM:CHA	2.25	0.49
1:D:257:LEU:CD2	2:D:301:HEM:HMA2	2.40	0.49
1:A:195:ILE:HD11	2:A:301:HEM:CBB	2.43	0.49
2:A:301:HEM:HBB2	2:A:301:HEM:CHC	2.40	0.49
1:G:181[A]:ASN:OD1	1:G:200:ARG:CZ	2.61	0.49
1:B:250:VAL:HG11	1:D:181[A]:ASN:HB2	1.94	0.48
1:B:195:ILE:HD11	2:B:301:HEM:CBB	2.44	0.48
1:A:252:LYS:HE2	1:A:265:ASP:OD1	2.13	0.48
1:G:234:HIS:CE1	1:G:240:GLN:HG2	2.49	0.48
1:D:273:ALA:O	1:D:274:ASN:HB2	2.13	0.47
2:D:301:HEM:CMD	2:D:301:HEM:HBD2	2.44	0.47
1:A:188:ILE:HB	1:A:197:TYR:HB2	1.97	0.47
1:B:181:ASN:HB2	1:D:250:VAL:HG11	1.97	0.47
1:D:240:GLN:HG3	2:D:301:HEM:C2D	2.50	0.47

*Continued on next page...*

*Continued from previous page...*

Atom-1	Atom-2	Interatomic distance (Å)	Clash overlap (Å)
1:G:273:ALA:O	1:G:274:ASN:HB2	2.14	0.46
1:D:257:LEU:HD21	2:D:301:HEM:CMA	2.43	0.46
1:A:271:ASN:HD21	1:A:275:ALA:HB3	1.80	0.46
2:G:301:HEM:HMD1	2:G:301:HEM:HBD1	1.98	0.46
1:B:271:ASN:HD21	1:B:275:ALA:HB3	1.80	0.46
1:B:193:LEU:HB3	1:B:230:ILE:HG12	1.96	0.46
1:G:240:GLN:HG3	2:G:301:HEM:C2D	2.50	0.45
1:B:188:ILE:HB	1:B:197:TYR:HB2	1.98	0.45
1:D:252:LYS:HG2	1:D:265:ASP:OD1	2.16	0.45
1:A:193:LEU:HB3	1:A:230:ILE:HG12	1.98	0.45
1:A:235:LYS:HD3	1:G:252:LYS:CD	2.45	0.45
1:A:257:LEU:HD21	2:A:301:HEM:HMA3	1.99	0.45
1:G:240:GLN:CG	2:G:301:HEM:C2D	2.99	0.45
1:G:252:LYS:HG2	1:G:265:ASP:OD1	2.16	0.45
2:G:301:HEM:CMD	2:G:301:HEM:CBD	2.95	0.44
1:B:273:ALA:O	1:B:274:ASN:HB2	2.17	0.44
1:B:252:LYS:NZ	1:B:265:ASP:OD1	2.39	0.44
2:G:301:HEM:HBD1	2:G:301:HEM:CMD	2.48	0.44
1:A:193:LEU:CD1	1:A:241:ARG:HG2	2.47	0.43
1:G:240:GLN:NE2	2:G:301:HEM:CAD	2.81	0.43
1:D:181[A]:ASN:OD1	1:D:200:ARG:CZ	2.66	0.43
1:B:257:LEU:HD21	2:B:301:HEM:HMA2	2.00	0.43
1:D:240:GLN:CG	2:D:301:HEM:C2D	3.01	0.43
1:B:250:VAL:HG11	1:D:181[B]:ASN:HB3	1.99	0.43
1:A:273:ALA:O	1:A:274:ASN:HB2	2.19	0.43
1:A:261:ARG:NH2	1:A:286:ARG:HB3	2.34	0.42
1:A:263:SER:HG	1:A:286:ARG:HE	1.62	0.42
1:B:247:LEU:HD21	1:B:251:HIS:HB2	2.02	0.42
1:B:260:ARG:HA	1:B:287:THR:HG21	2.02	0.42
2:D:301:HEM:HBD1	2:D:301:HEM:HMD1	2.02	0.42
1:D:240:GLN:NE2	2:D:301:HEM:C3D	2.80	0.42
1:D:240:GLN:NE2	2:D:301:HEM:CAD	2.81	0.42
1:B:271:ASN:ND2	1:B:275:ALA:HB3	2.35	0.42
2:B:301:HEM:HBB2	2:B:301:HEM:CHC	2.47	0.41
1:D:230:ILE:HG21	2:D:301:HEM:HMC2	2.01	0.41
1:A:234:HIS:CE1	1:A:240:GLN:HG2	2.55	0.41
1:A:271:ASN:ND2	1:A:275:ALA:HB3	2.36	0.41
1:G:230:ILE:HG21	2:G:301:HEM:HMC2	2.01	0.41
1:B:193:LEU:CD1	1:B:241:ARG:HG2	2.51	0.41
1:G:240:GLN:NE2	2:G:301:HEM:HAD2	2.36	0.41
1:G:260:ARG:NH1	1:G:285:ASP:OD1	2.54	0.41

*Continued on next page...*

Continued from previous page...

Atom-1	Atom-2	Interatomic distance (Å)	Clash overlap (Å)
1:B:234:HIS:CE1	1:B:240:GLN:HG2	2.56	0.40
1:D:174:ARG:NH2	5:D:412:HOH:O	2.54	0.40
1:G:257:LEU:CD2	2:G:301:HEM:HMA2	2.44	0.40

All (1) symmetry-related close contacts are listed below. The label for Atom-2 includes the symmetry operator and encoded unit-cell translations to be applied.

Atom-1	Atom-2	Interatomic distance (Å)	Clash overlap (Å)
1:B:194:ASN:OD1	1:G:169:GLY:N[3_555]	2.12	0.08

## 5.3 Torsion angles [i](#)

### 5.3.1 Protein backbone [i](#)

In the following table, the Percentiles column shows the percent Ramachandran outliers of the chain as a percentile score with respect to all X-ray entries followed by that with respect to entries of similar resolution.

The Analysed column shows the number of residues for which the backbone conformation was analysed, and the total number of residues.

Mol	Chain	Analysed	Favoured	Allowed	Outliers	Percentiles	
1	A	117/121 (97%)	116 (99%)	1 (1%)	0	100	100
1	B	117/121 (97%)	116 (99%)	1 (1%)	0	100	100
1	D	118/121 (98%)	117 (99%)	1 (1%)	0	100	100
1	G	118/121 (98%)	117 (99%)	1 (1%)	0	100	100
All	All	470/484 (97%)	466 (99%)	4 (1%)	0	100	100

There are no Ramachandran outliers to report.

### 5.3.2 Protein sidechains [i](#)

In the following table, the Percentiles column shows the percent sidechain outliers of the chain as a percentile score with respect to all X-ray entries followed by that with respect to entries of similar resolution.

The Analysed column shows the number of residues for which the sidechain conformation was analysed, and the total number of residues.

Mol	Chain	Analysed	Rotameric	Outliers	Percentiles	
1	A	96/98 (98%)	96 (100%)	0	100	100
1	B	96/98 (98%)	96 (100%)	0	100	100
1	D	97/98 (99%)	97 (100%)	0	100	100
1	G	97/98 (99%)	97 (100%)	0	100	100
All	All	386/392 (98%)	386 (100%)	0	100	100

There are no protein residues with a non-rotameric sidechain to report.

Sometimes sidechains can be flipped to improve hydrogen bonding and reduce clashes. There are no such sidechains identified.

### 5.3.3 RNA [i](#)

There are no RNA molecules in this entry.

## 5.4 Non-standard residues in protein, DNA, RNA chains [i](#)

There are no non-standard protein/DNA/RNA residues in this entry.

## 5.5 Carbohydrates [i](#)

There are no monosaccharides in this entry.

## 5.6 Ligand geometry [i](#)

Of 9 ligands modelled in this entry, 1 is monoatomic - leaving 8 for Mogul analysis.

In the following table, the Counts columns list the number of bonds (or angles) for which Mogul statistics could be retrieved, the number of bonds (or angles) that are observed in the model and the number of bonds (or angles) that are defined in the Chemical Component Dictionary. The Link column lists molecule types, if any, to which the group is linked. The Z score for a bond length (or angle) is the number of standard deviations the observed value is removed from the expected value. A bond length (or angle) with  $|Z| > 2$  is considered an outlier worth inspection. RMSZ is the root-mean-square of all Z scores of the bond lengths (or angles).

Mol	Type	Chain	Res	Link	Bond lengths			Bond angles		
					Counts	RMSZ	$\# Z  > 2$	Counts	RMSZ	$\# Z  > 2$
4	GOL	G	302	-	5,5,5	0.39	0	5,5,5	0.41	0
2	HEM	A	301	1	41,50,50	2.49	15 (36%)	45,82,82	2.77	13 (28%)
2	HEM	D	301	1	41,50,50	2.56	16 (39%)	45,82,82	2.80	17 (37%)

Mol	Type	Chain	Res	Link	Bond lengths			Bond angles		
					Counts	RMSZ	# Z  > 2	Counts	RMSZ	# Z  > 2
4	GOL	D	302	-	5,5,5	0.35	0	5,5,5	0.42	0
4	GOL	G	303	-	5,5,5	0.34	0	5,5,5	0.30	0
2	HEM	B	301	1	41,50,50	2.50	15 (36%)	45,82,82	2.80	13 (28%)
4	GOL	B	302	-	5,5,5	0.36	0	5,5,5	0.54	0
2	HEM	G	301	1	41,50,50	2.57	16 (39%)	45,82,82	2.77	16 (35%)

In the following table, the Chirals column lists the number of chiral outliers, the number of chiral centers analysed, the number of these observed in the model and the number defined in the Chemical Component Dictionary. Similar counts are reported in the Torsion and Rings columns. '-' means no outliers of that kind were identified.

Mol	Type	Chain	Res	Link	Chirals	Torsions	Rings
4	GOL	G	302	-	-	4/4/4/4	-
2	HEM	A	301	1	-	1/12/54/54	-
2	HEM	D	301	1	-	5/12/54/54	-
4	GOL	D	302	-	-	2/4/4/4	-
4	GOL	G	303	-	-	2/4/4/4	-
2	HEM	B	301	1	-	1/12/54/54	-
4	GOL	B	302	-	-	4/4/4/4	-
2	HEM	G	301	1	-	4/12/54/54	-

All (62) bond length outliers are listed below:

Mol	Chain	Res	Type	Atoms	Z	Observed(Å)	Ideal(Å)
2	D	301	HEM	FE-NB	8.02	2.36	1.96
2	G	301	HEM	FE-NB	7.97	2.36	1.96
2	A	301	HEM	FE-NB	7.42	2.33	1.96
2	B	301	HEM	FE-NB	7.40	2.33	1.96
2	D	301	HEM	CMC-C2C	-5.59	1.38	1.51
2	G	301	HEM	CMC-C2C	-5.53	1.38	1.51
2	B	301	HEM	CMC-C2C	-5.32	1.38	1.51
2	A	301	HEM	CMC-C2C	-5.23	1.39	1.51
2	D	301	HEM	C4D-ND	-5.21	1.31	1.40
2	G	301	HEM	C4D-ND	-5.19	1.31	1.40
2	A	301	HEM	C4D-ND	-5.17	1.31	1.40
2	B	301	HEM	C4D-ND	-5.14	1.31	1.40
2	A	301	HEM	C3B-C2B	4.64	1.46	1.37
2	B	301	HEM	C3B-C2B	4.58	1.46	1.37
2	B	301	HEM	CMD-C2D	-4.49	1.41	1.50
2	A	301	HEM	CMD-C2D	-4.43	1.41	1.50

*Continued on next page...*

*Continued from previous page...*

Mol	Chain	Res	Type	Atoms	Z	Observed(Å)	Ideal(Å)
2	G	301	HEM	CMD-C2D	-4.28	1.41	1.50
2	G	301	HEM	C3B-C2B	4.20	1.45	1.37
2	D	301	HEM	C3B-C2B	4.20	1.45	1.37
2	D	301	HEM	CMD-C2D	-4.20	1.41	1.50
2	A	301	HEM	FE-ND	3.54	2.14	1.96
2	B	301	HEM	FE-ND	3.53	2.14	1.96
2	G	301	HEM	CMB-C2B	-3.46	1.43	1.50
2	G	301	HEM	FE-ND	3.40	2.13	1.96
2	D	301	HEM	FE-ND	3.40	2.13	1.96
2	D	301	HEM	CMB-C2B	-3.37	1.43	1.50
2	D	301	HEM	C1D-ND	-3.29	1.32	1.38
2	G	301	HEM	C1D-ND	-3.29	1.32	1.38
2	A	301	HEM	CMB-C2B	-3.20	1.44	1.50
2	B	301	HEM	CMB-C2B	-3.06	1.44	1.50
2	B	301	HEM	C1D-ND	-3.00	1.32	1.38
2	G	301	HEM	CAD-C3D	-3.00	1.43	1.51
2	B	301	HEM	CAD-C3D	-2.92	1.43	1.51
2	D	301	HEM	CAD-C3D	-2.88	1.43	1.51
2	A	301	HEM	C1D-ND	-2.86	1.32	1.38
2	G	301	HEM	C1A-NA	2.86	1.42	1.36
2	A	301	HEM	CAD-C3D	-2.85	1.43	1.51
2	D	301	HEM	CHA-C4D	2.83	1.42	1.35
2	D	301	HEM	C1A-NA	2.82	1.42	1.36
2	G	301	HEM	CHA-C4D	2.75	1.42	1.35
2	D	301	HEM	C3D-C2D	2.67	1.42	1.36
2	B	301	HEM	C1B-NB	-2.61	1.35	1.40
2	A	301	HEM	C3D-C2D	2.59	1.42	1.36
2	B	301	HEM	C3D-C2D	2.55	1.42	1.36
2	A	301	HEM	C1B-NB	-2.53	1.35	1.40
2	B	301	HEM	C1A-NA	2.51	1.41	1.36
2	G	301	HEM	C3D-C2D	2.50	1.42	1.36
2	B	301	HEM	CAB-C3B	-2.45	1.40	1.47
2	A	301	HEM	CAB-C3B	-2.40	1.40	1.47
2	A	301	HEM	C1A-NA	2.40	1.41	1.36
2	B	301	HEM	CHA-C4D	2.39	1.41	1.35
2	A	301	HEM	CHA-C4D	2.32	1.40	1.35
2	D	301	HEM	CAB-C3B	-2.28	1.41	1.47
2	G	301	HEM	CAB-C3B	-2.25	1.41	1.47
2	G	301	HEM	C1B-NB	-2.24	1.36	1.40
2	G	301	HEM	C1D-C2D	-2.18	1.40	1.44
2	D	301	HEM	C1B-NB	-2.11	1.36	1.40
2	D	301	HEM	C1D-C2D	-2.11	1.40	1.44

*Continued on next page...*

*Continued from previous page...*

Mol	Chain	Res	Type	Atoms	Z	Observed(Å)	Ideal(Å)
2	B	301	HEM	CHB-C1B	2.10	1.40	1.35
2	G	301	HEM	CHB-C1B	2.08	1.40	1.35
2	D	301	HEM	CHB-C1B	2.06	1.40	1.35
2	A	301	HEM	CHB-C1B	2.06	1.40	1.35

All (59) bond angle outliers are listed below:

Mol	Chain	Res	Type	Atoms	Z	Observed(°)	Ideal(°)
2	B	301	HEM	C1B-NB-C4B	9.73	115.12	105.07
2	A	301	HEM	C1B-NB-C4B	9.73	115.12	105.07
2	D	301	HEM	C4D-ND-C1D	9.49	114.87	105.07
2	G	301	HEM	C4D-ND-C1D	9.27	114.65	105.07
2	B	301	HEM	C4D-ND-C1D	8.53	113.88	105.07
2	A	301	HEM	C4D-ND-C1D	8.42	113.77	105.07
2	G	301	HEM	C1B-NB-C4B	7.57	112.90	105.07
2	D	301	HEM	C1B-NB-C4B	7.46	112.78	105.07
2	B	301	HEM	CHC-C4B-NB	6.12	131.08	124.43
2	A	301	HEM	CHC-C4B-NB	5.90	130.84	124.43
2	A	301	HEM	C4B-CHC-C1C	5.02	129.19	122.56
2	B	301	HEM	C4B-CHC-C1C	4.85	128.96	122.56
2	G	301	HEM	CHD-C1D-ND	4.72	129.56	124.43
2	D	301	HEM	CHD-C1D-ND	4.69	129.53	124.43
2	G	301	HEM	C3D-C4D-ND	-4.49	105.17	110.17
2	D	301	HEM	C3D-C4D-ND	-4.48	105.18	110.17
2	G	301	HEM	C4B-CHC-C1C	4.29	128.22	122.56
2	D	301	HEM	C4C-CHD-C1D	4.25	128.16	122.56
2	G	301	HEM	C4C-CHD-C1D	4.20	128.10	122.56
2	D	301	HEM	CHC-C4B-NB	4.18	128.97	124.43
2	D	301	HEM	C4B-CHC-C1C	4.18	128.07	122.56
2	B	301	HEM	C4C-CHD-C1D	4.16	128.05	122.56
2	A	301	HEM	C4C-CHD-C1D	4.05	127.90	122.56
2	G	301	HEM	CHC-C4B-NB	4.03	128.81	124.43
2	B	301	HEM	C3D-C4D-ND	-3.77	105.97	110.17
2	A	301	HEM	C3D-C4D-ND	-3.70	106.04	110.17
2	D	301	HEM	C3C-C4C-NC	-3.45	104.43	110.94
2	G	301	HEM	CBD-CAD-C3D	-3.39	103.21	112.63
2	B	301	HEM	C3C-C4C-NC	-3.38	104.56	110.94
2	G	301	HEM	C3C-C4C-NC	-3.37	104.58	110.94
2	D	301	HEM	CMA-C3A-C4A	-3.29	123.41	128.46
2	A	301	HEM	C3C-C4C-NC	-3.19	104.93	110.94
2	B	301	HEM	CHD-C1D-ND	3.14	127.84	124.43
2	G	301	HEM	CMA-C3A-C4A	-3.12	123.67	128.46

*Continued on next page...*



Continued from previous page...

Mol	Chain	Res	Type	Atoms	Z	Observed(°)	Ideal(°)
2	A	301	HEM	CHD-C1D-ND	3.02	127.72	124.43
2	D	301	HEM	CBA-CAA-C2A	2.88	117.53	112.62
2	B	301	HEM	CBD-CAD-C3D	-2.88	104.64	112.63
2	B	301	HEM	C2D-C1D-ND	-2.86	106.46	109.88
2	G	301	HEM	C4A-C3A-C2A	2.80	108.94	107.00
2	D	301	HEM	C4A-C3A-C2A	2.79	108.94	107.00
2	A	301	HEM	C2D-C1D-ND	-2.78	106.55	109.88
2	D	301	HEM	C2D-C1D-ND	-2.76	106.57	109.88
2	B	301	HEM	C2B-C1B-NB	-2.73	106.60	109.84
2	A	301	HEM	C2B-C1B-NB	-2.73	106.60	109.84
2	A	301	HEM	CBD-CAD-C3D	-2.67	105.21	112.63
2	G	301	HEM	C2D-C1D-ND	-2.65	106.71	109.88
2	A	301	HEM	CBA-CAA-C2A	-2.42	108.49	112.62
2	D	301	HEM	CMD-C2D-C3D	2.42	132.68	126.12
2	D	301	HEM	CMD-C2D-C1D	-2.40	121.39	125.04
2	B	301	HEM	CHB-C1B-NB	2.39	127.33	124.38
2	D	301	HEM	CBD-CAD-C3D	-2.35	106.09	112.63
2	D	301	HEM	CMB-C2B-C1B	2.32	128.58	125.04
2	A	301	HEM	CHB-C1B-NB	2.27	127.19	124.38
2	B	301	HEM	C2C-C3C-C4C	2.25	108.47	106.90
2	G	301	HEM	CMD-C2D-C3D	2.24	132.20	126.12
2	D	301	HEM	O2D-CGD-CBD	2.20	121.10	114.03
2	G	301	HEM	CMB-C2B-C1B	2.14	128.30	125.04
2	G	301	HEM	CMD-C2D-C1D	-2.07	121.89	125.04
2	G	301	HEM	O2D-CGD-CBD	2.02	120.50	114.03

There are no chirality outliers.

All (23) torsion outliers are listed below:

Mol	Chain	Res	Type	Atoms
2	D	301	HEM	C2D-C3D-CAD-CBD
2	G	301	HEM	C2D-C3D-CAD-CBD
2	G	301	HEM	C4D-C3D-CAD-CBD
4	B	302	GOL	O1-C1-C2-C3
4	B	302	GOL	C1-C2-C3-O3
4	D	302	GOL	O1-C1-C2-C3
4	G	303	GOL	O1-C1-C2-C3
2	D	301	HEM	C4D-C3D-CAD-CBD
2	B	301	HEM	C2A-CAA-CBA-CGA
4	B	302	GOL	O2-C2-C3-O3
4	D	302	GOL	O1-C1-C2-O2
4	G	303	GOL	O1-C1-C2-O2

Continued on next page...

*Continued from previous page...*

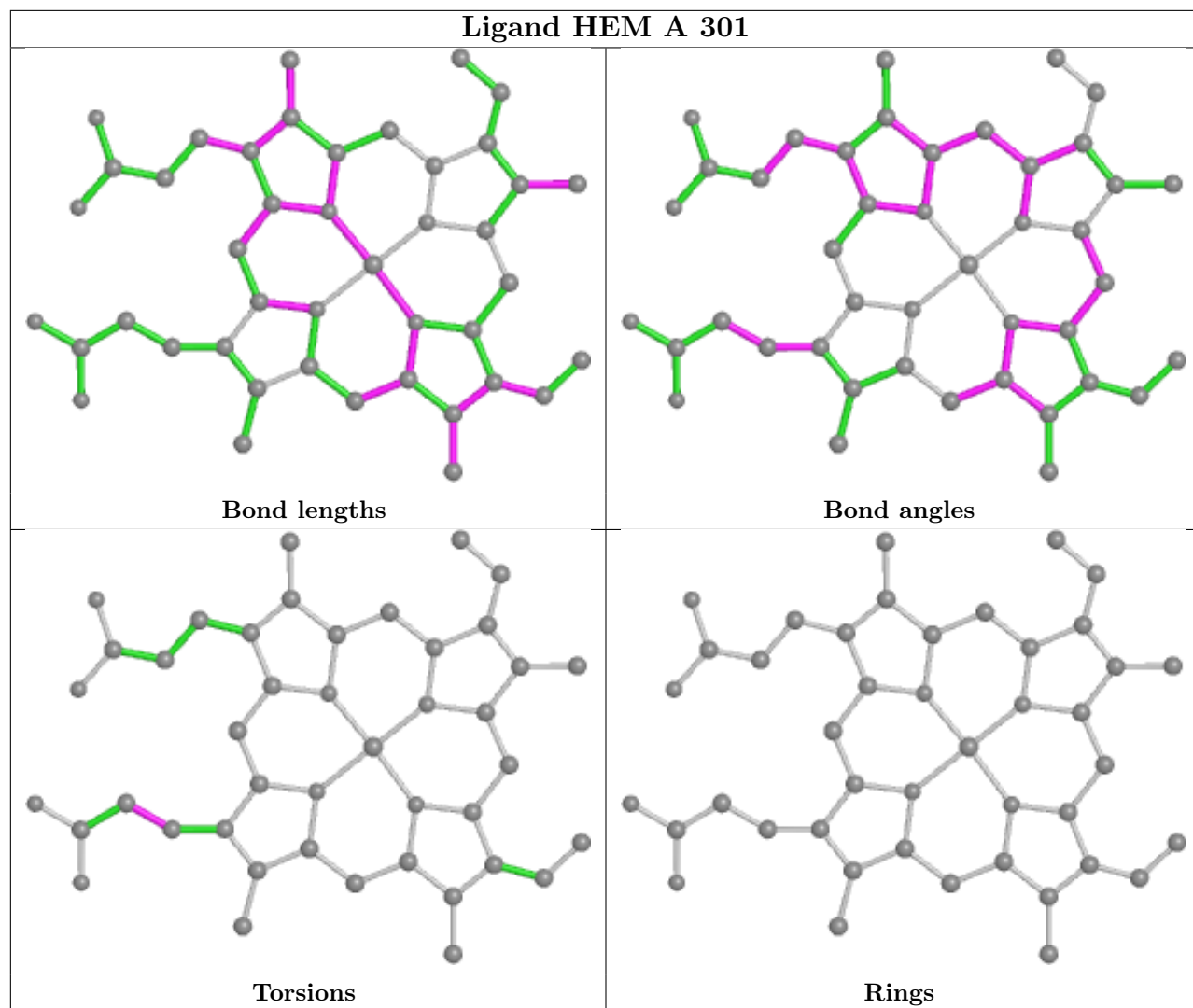
Mol	Chain	Res	Type	Atoms
4	G	302	GOL	C1-C2-C3-O3
2	A	301	HEM	C2A-CAA-CBA-CGA
4	B	302	GOL	O1-C1-C2-O2
4	G	302	GOL	O2-C2-C3-O3
4	G	302	GOL	O1-C1-C2-O2
4	G	302	GOL	O1-C1-C2-C3
2	D	301	HEM	C3D-CAD-CBD-CGD
2	G	301	HEM	CAD-CBD-CGD-O1D
2	D	301	HEM	CAD-CBD-CGD-O1D
2	G	301	HEM	CAD-CBD-CGD-O2D
2	D	301	HEM	CAD-CBD-CGD-O2D

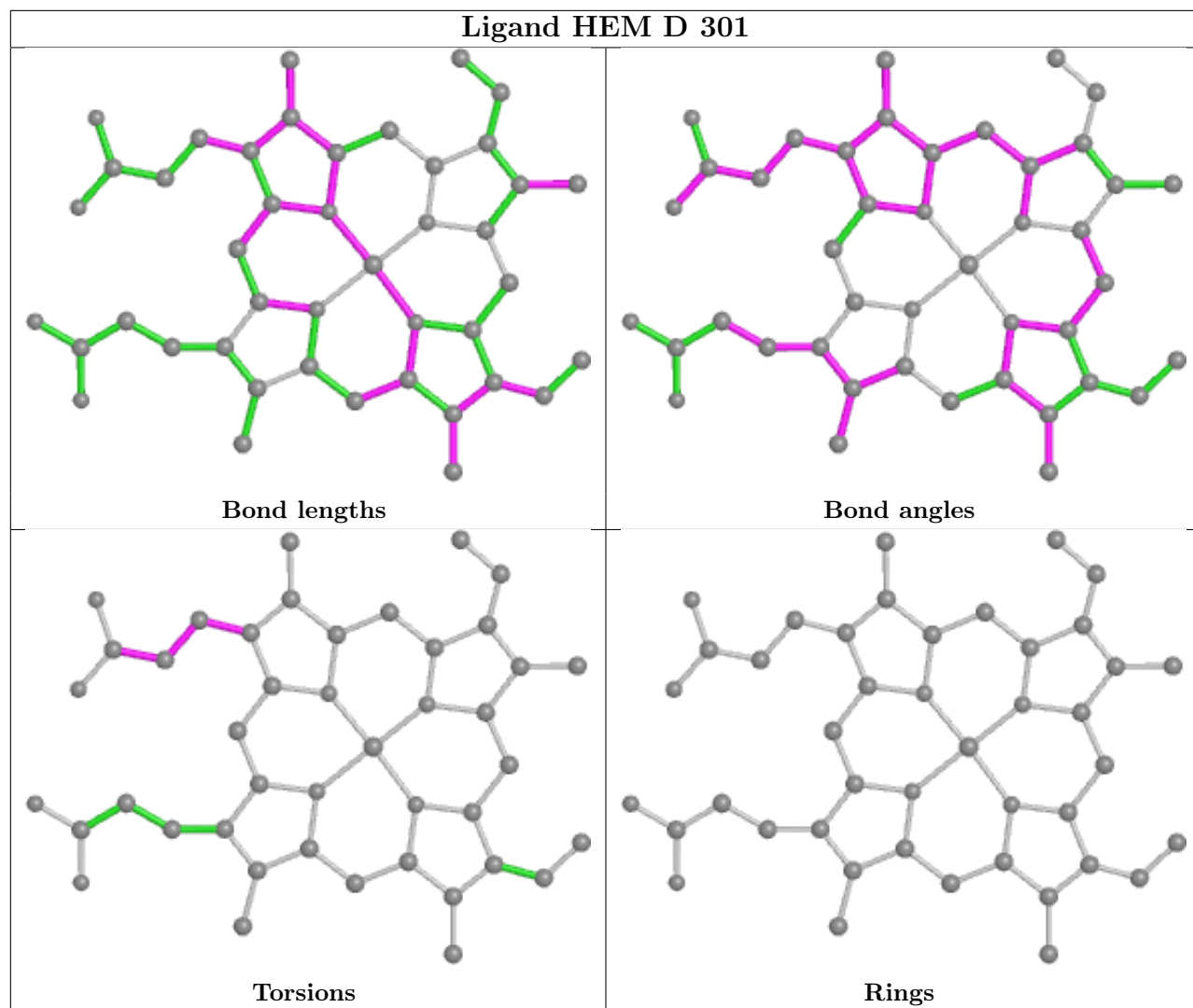
There are no ring outliers.

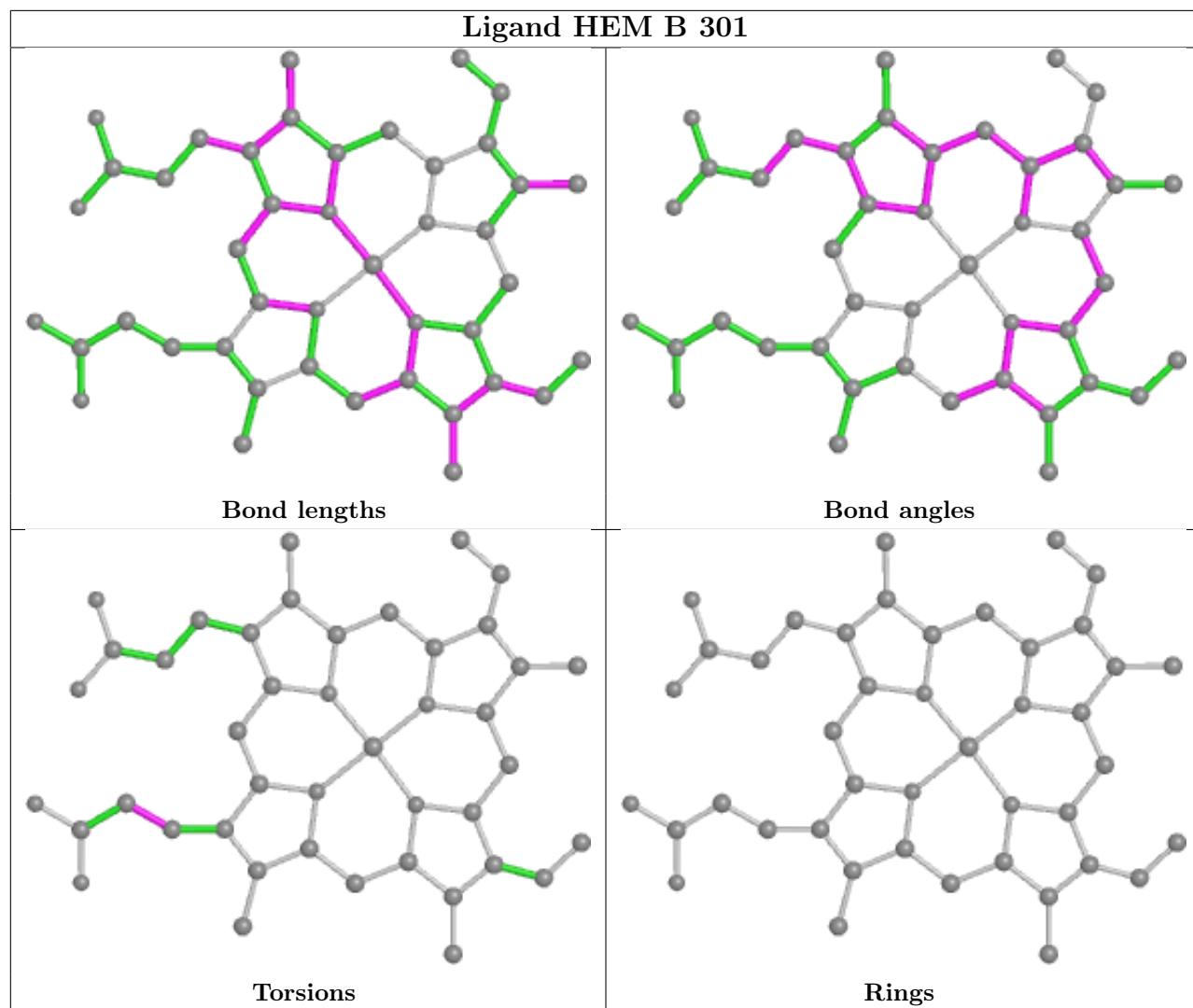
5 monomers are involved in 39 short contacts:

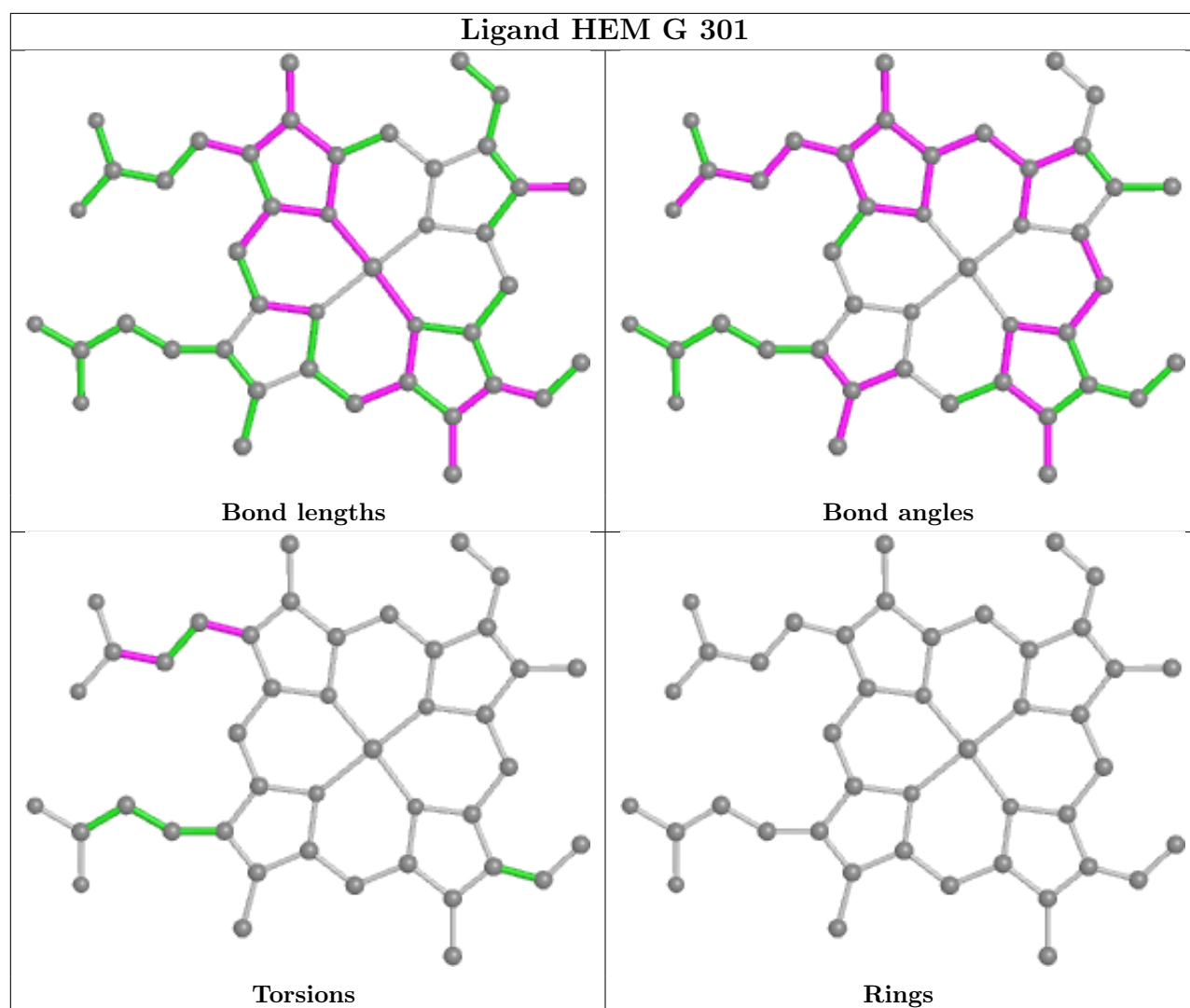
Mol	Chain	Res	Type	Clashes	Symm-Clashes
2	A	301	HEM	6	0
2	D	301	HEM	14	0
4	D	302	GOL	1	0
2	B	301	HEM	6	0
2	G	301	HEM	12	0

The following is a two-dimensional graphical depiction of Mogul quality analysis of bond lengths, bond angles, torsion angles, and ring geometry for all instances of the Ligand of Interest. In addition, ligands with molecular weight > 250 and outliers as shown on the validation Tables will also be included. For torsion angles, if less than 5% of the Mogul distribution of torsion angles is within 10 degrees of the torsion angle in question, then that torsion angle is considered an outlier. Any bond that is central to one or more torsion angles identified as an outlier by Mogul will be highlighted in the graph. For rings, the root-mean-square deviation (RMSD) between the ring in question and similar rings identified by Mogul is calculated over all ring torsion angles. If the average RMSD is greater than 60 degrees and the minimal RMSD between the ring in question and any Mogul-identified rings is also greater than 60 degrees, then that ring is considered an outlier. The outliers are highlighted in purple. The color gray indicates Mogul did not find sufficient equivalents in the CSD to analyse the geometry.









## 5.7 Other polymers [i](#)

There are no such residues in this entry.

## 5.8 Polymer linkage issues [i](#)

There are no chain breaks in this entry.

## 6 Fit of model and data

### 6.1 Protein, DNA and RNA chains

In the following table, the column labelled ‘#RSRZ > 2’ contains the number (and percentage) of RSRZ outliers, followed by percent RSRZ outliers for the chain as percentile scores relative to all X-ray entries and entries of similar resolution. The OWAB column contains the minimum, median, 95<sup>th</sup> percentile and maximum values of the occupancy-weighted average B-factor per residue. The column labelled ‘Q < 0.9’ lists the number of (and percentage) of residues with an average occupancy less than 0.9.

Mol	Chain	Analysed	<RSRZ>	#RSRZ>2	OWAB(Å <sup>2</sup> )	Q<0.9
1	A	119/121 (98%)	-0.13	3 (2%) 57 64	2, 13, 31, 44	0
1	B	119/121 (98%)	-0.13	3 (2%) 57 64	2, 13, 30, 45	0
1	D	119/121 (98%)	0.71	20 (16%) 1 2	6, 25, 50, 56	0
1	G	119/121 (98%)	0.72	19 (15%) 1 2	6, 25, 50, 59	0
All	All	476/484 (98%)	0.29	45 (9%) 8 11	2, 17, 45, 59	0

All (45) RSRZ outliers are listed below:

Mol	Chain	Res	Type	RSRZ
1	G	239	HIS	10.2
1	G	240	GLN	6.6
1	D	244	LEU	6.5
1	D	239	HIS	6.1
1	G	244	LEU	6.1
1	D	253	ALA	5.3
1	D	252	LYS	5.3
1	D	243	LEU	5.2
1	D	242	HIS	4.8
1	G	242	HIS	4.4
1	G	248	THR	4.3
1	G	243	LEU	4.2
1	G	238	ALA	4.1
1	D	240	GLN	4.1
1	D	238	ALA	4.0
1	G	250	VAL	3.7
1	G	246	ASN	3.7
1	G	233	PHE	3.7
1	D	233	PHE	3.7
1	D	250	VAL	3.6
1	G	247	LEU	3.3

*Continued on next page...*

*Continued from previous page...*

Mol	Chain	Res	Type	RSRZ
1	D	248	THR	3.3
1	D	169	GLY	3.2
1	A	272	ASP	3.2
1	G	252	LYS	3.1
1	G	253	ALA	3.0
1	D	246	ASN	2.9
1	G	232	VAL	2.7
1	G	235	LYS	2.5
1	D	237	PRO	2.5
1	B	219	ASN	2.5
1	D	232	VAL	2.4
1	D	236	ASN	2.3
1	D	251	HIS	2.3
1	D	235	LYS	2.3
1	B	169	GLY	2.2
1	D	247	LEU	2.2
1	G	237	PRO	2.2
1	G	272	ASP	2.2
1	B	254	GLU	2.1
1	A	235	LYS	2.1
1	A	219	ASN	2.1
1	G	254	GLU	2.0
1	G	251	HIS	2.0
1	D	171	HIS	2.0

## 6.2 Non-standard residues in protein, DNA, RNA chains [i](#)

There are no non-standard protein/DNA/RNA residues in this entry.

## 6.3 Carbohydrates [i](#)

There are no monosaccharides in this entry.

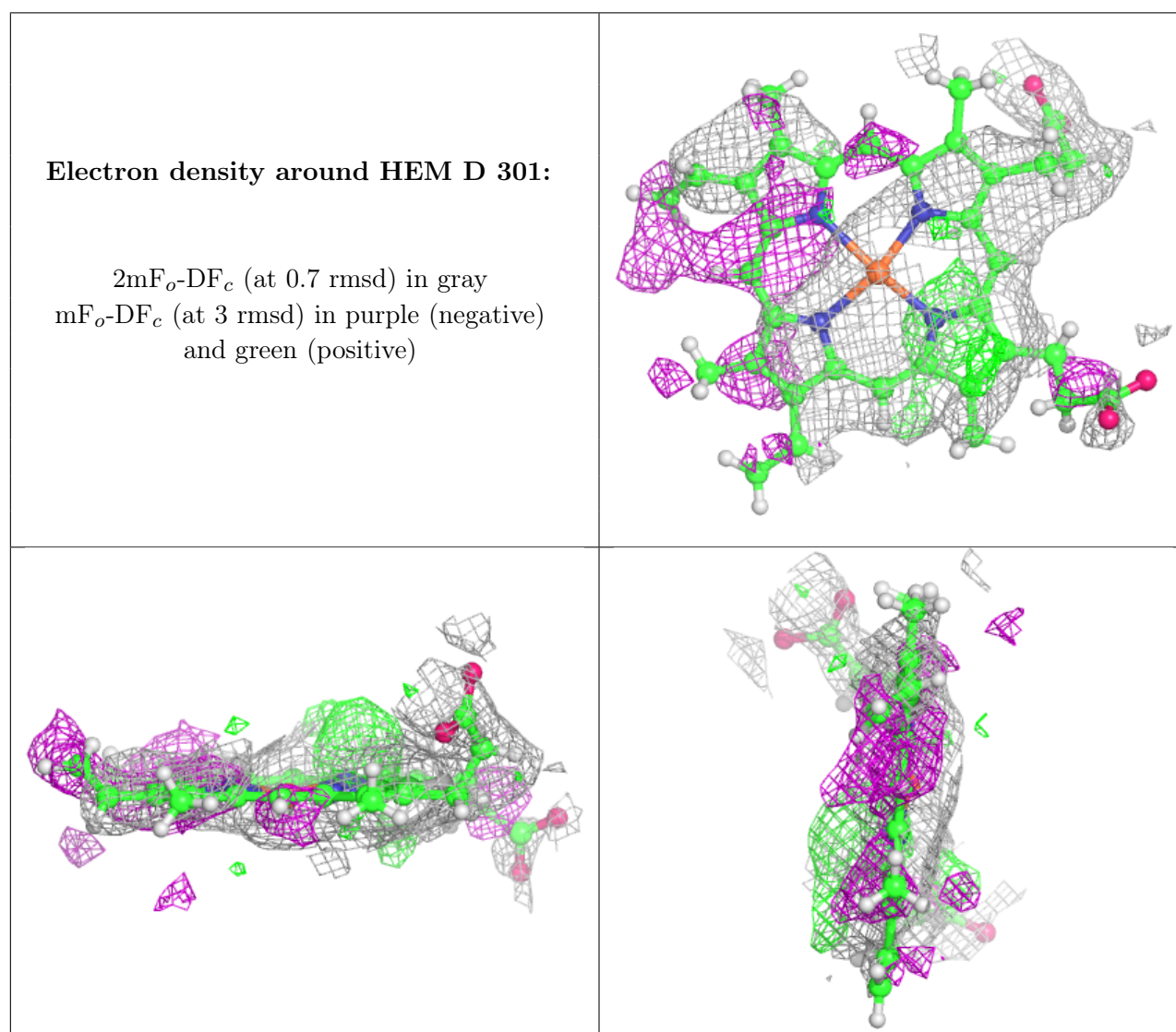
## 6.4 Ligands [i](#)

In the following table, the Atoms column lists the number of modelled atoms in the group and the number defined in the chemical component dictionary. The B-factors column lists the minimum, median, 95<sup>th</sup> percentile and maximum values of B factors of atoms in the group. The column labelled 'Q< 0.9' lists the number of atoms with occupancy less than 0.9.



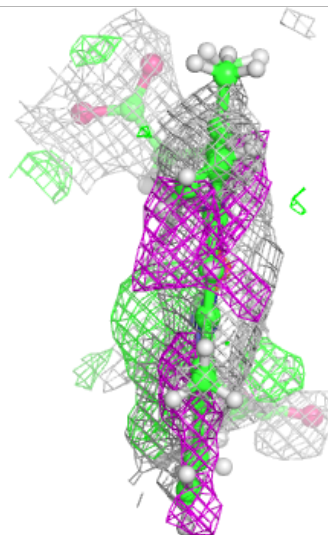
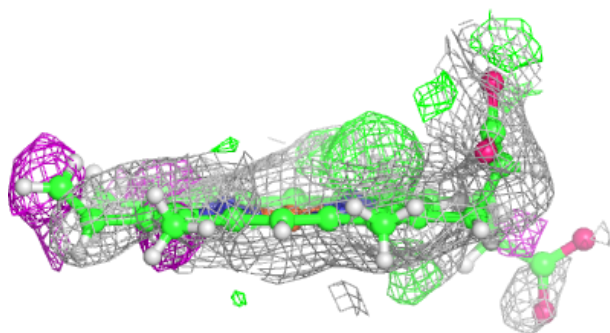
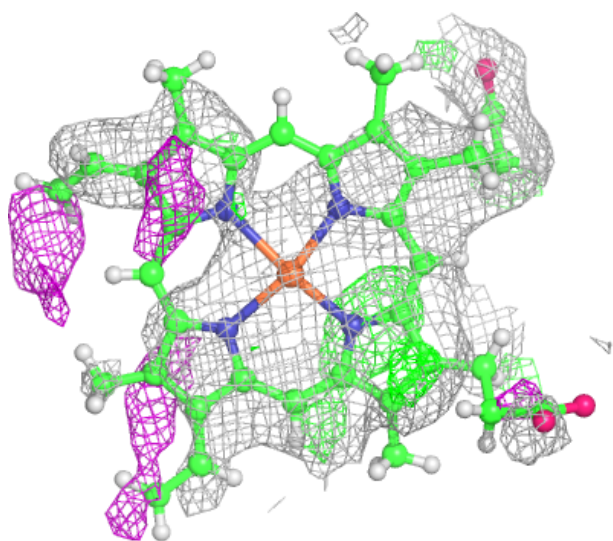
Mol	Type	Chain	Res	Atoms	RSCC	RSR	B-factors( $\text{\AA}^2$ )	Q<0.9
2	HEM	D	301	43/43	0.72	0.40	27,46,61,71	0
2	HEM	G	301	43/43	0.73	0.34	27,45,61,73	0
4	GOL	G	302	6/6	0.77	0.28	26,38,46,49	0
4	GOL	D	302	6/6	0.80	0.28	38,52,65,69	0
4	GOL	B	302	6/6	0.86	0.23	26,36,43,44	0
2	HEM	B	301	43/43	0.90	0.25	7,19,37,45	0
2	HEM	A	301	43/43	0.90	0.24	7,17,37,46	0
4	GOL	G	303	6/6	0.90	0.18	33,46,55,55	0
3	CL	A	302	1/1	0.94	0.08	54,54,54,54	0

The following is a graphical depiction of the model fit to experimental electron density of all instances of the Ligand of Interest. In addition, ligands with molecular weight > 250 and outliers as shown on the geometry validation Tables will also be included. Each fit is shown from different orientation to approximate a three-dimensional view.



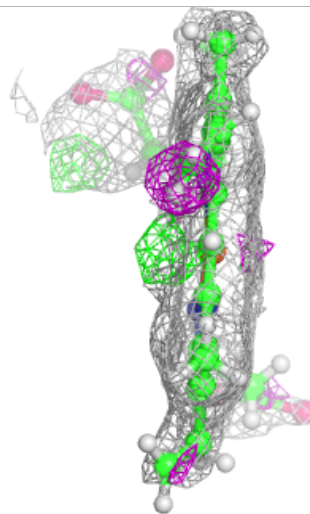
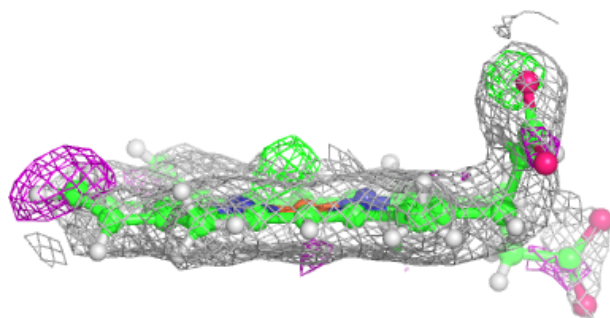
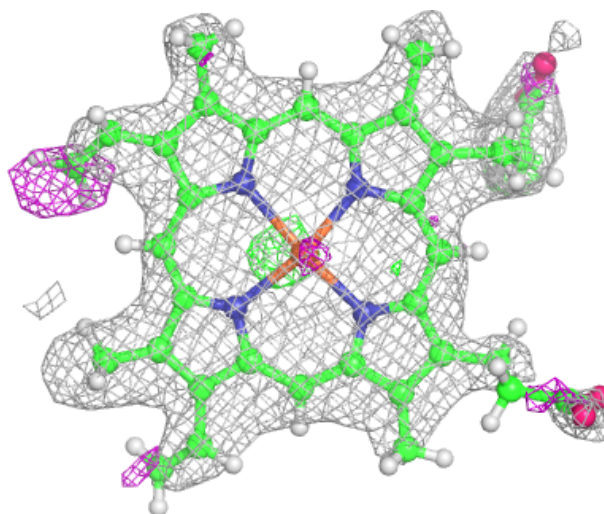
**Electron density around HEM G 301:**

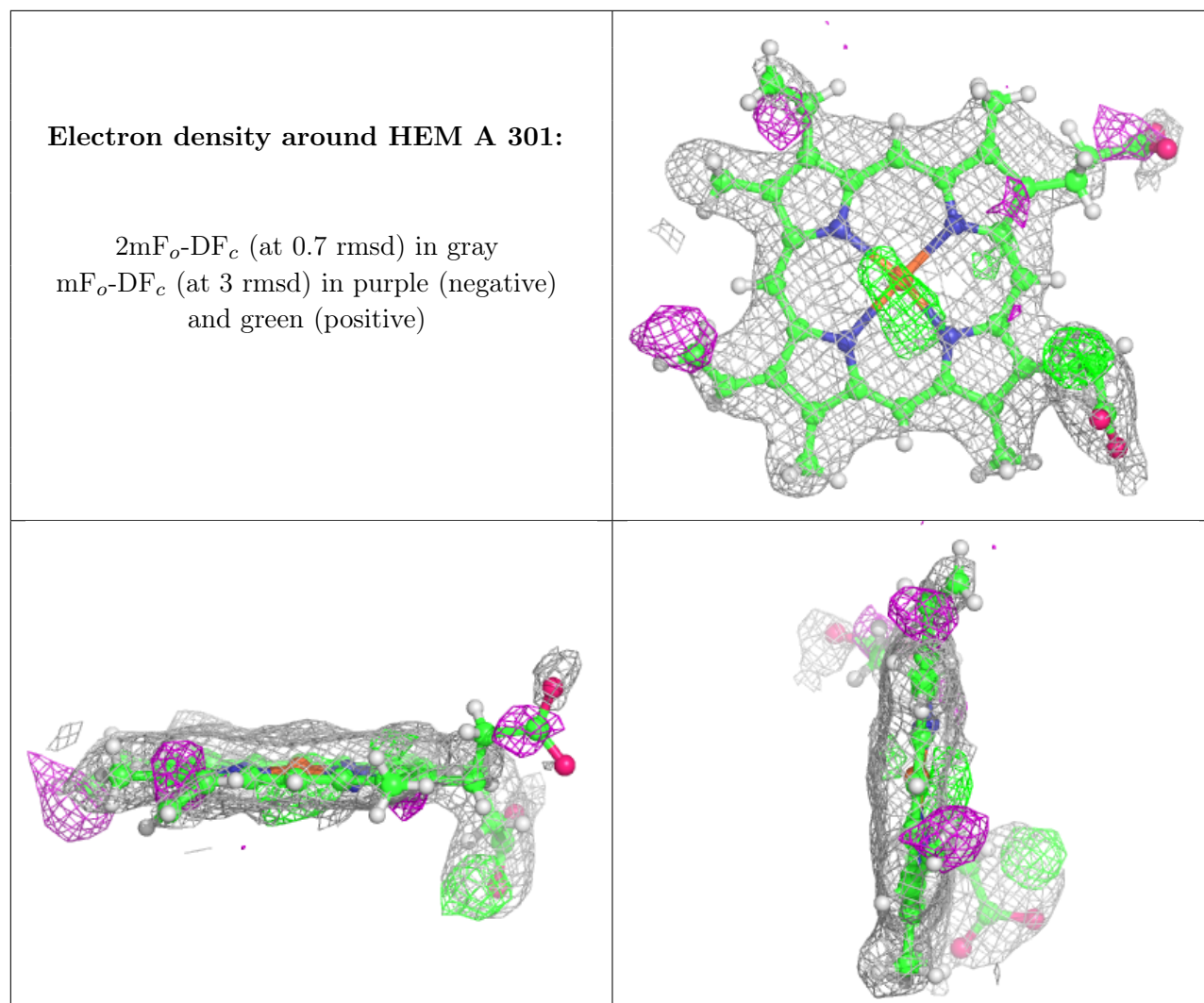
$2mF_o-DF_c$  (at 0.7 rmsd) in gray  
 $mF_o-DF_c$  (at 3 rmsd) in purple (negative)  
and green (positive)



**Electron density around HEM B 301:**

$2mF_o-DF_c$  (at 0.7 rmsd) in gray  
 $mF_o-DF_c$  (at 3 rmsd) in purple (negative)  
and green (positive)





## 6.5 Other polymers [i](#)

There are no such residues in this entry.