



# Full wwPDB X-ray Structure Validation Report ⓘ

Dec 10, 2023 – 09:12 am GMT

PDB ID : 1HJX  
Title : Ligand-induced signalling and conformational change of the 39 kD glycoprotein from human articular chondrocytes  
Authors : Houston, D.R.; Recklies, A.D.; Krupa, J.C.; Van Aalten, D.M.F.  
Deposited on : 2003-02-28  
Resolution : 1.85 Å(reported)

This is a Full wwPDB X-ray Structure Validation Report for a publicly released PDB entry.

We welcome your comments at [validation@mail.wwpdb.org](mailto:validation@mail.wwpdb.org)

A user guide is available at

<https://www.wwpdb.org/validation/2017/XrayValidationReportHelp>

with specific help available everywhere you see the ⓘ symbol.

The types of validation reports are described at

<http://www.wwpdb.org/validation/2017/FAQs#types>.

---

The following versions of software and data (see [references ⓘ](#)) were used in the production of this report:

MolProbity : 4.02b-467  
Mogul : 1.8.4, CSD as541be (2020)  
Xtriage (Phenix) : 1.13  
EDS : 2.36  
Percentile statistics : 20191225.v01 (using entries in the PDB archive December 25th 2019)  
Refmac : 5.8.0158  
CCP4 : 7.0.044 (Gargrove)  
Ideal geometry (proteins) : Engh & Huber (2001)  
Ideal geometry (DNA, RNA) : Parkinson et al. (1996)  
Validation Pipeline (wwPDB-VP) : 2.36

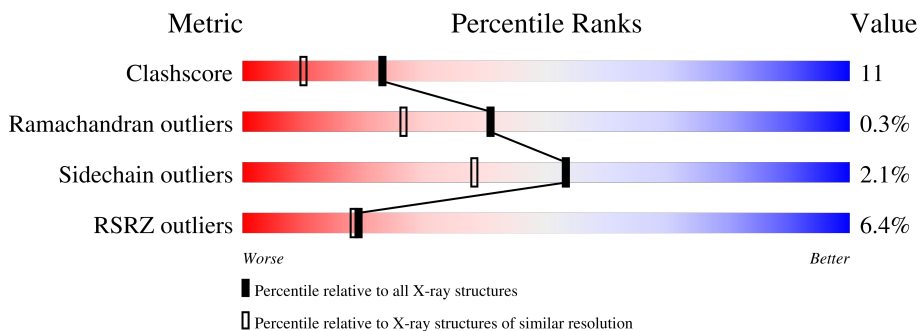
# 1 Overall quality at a glance

The following experimental techniques were used to determine the structure:

*X-RAY DIFFRACTION*

The reported resolution of this entry is 1.85 Å.

Percentile scores (ranging between 0-100) for global validation metrics of the entry are shown in the following graphic. The table shows the number of entries on which the scores are based.




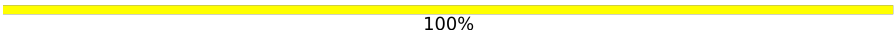
Metric	Whole archive (#Entries)	Similar resolution (#Entries, resolution range(Å))
Clashscore	141614	2625 (1.86-1.86)
Ramachandran outliers	138981	2592 (1.86-1.86)
Sidechain outliers	138945	2592 (1.86-1.86)
RSRZ outliers	127900	2436 (1.86-1.86)

The table below summarises the geometric issues observed across the polymeric chains and their fit to the electron density. The red, orange, yellow and green segments of the lower bar indicate the fraction of residues that contain outliers for  $\geq 3$ , 2, 1 and 0 types of geometric quality criteria respectively. A grey segment represents the fraction of residues that are not modelled. The numeric value for each fraction is indicated below the corresponding segment, with a dot representing fractions  $\leq 5\%$ . The upper red bar (where present) indicates the fraction of residues that have poor fit to the electron density. The numeric value is given above the bar.

Mol	Chain	Length	Quality of chain
1	A	362	 4% 86% 13% .
1	B	362	 3% 88% 11% .
1	C	362	 7% 82% 16% ..
1	D	362	 12% 77% 22% ..
2	E	2	 50% 50%
2	F	2	 50% 50%

*Continued on next page...*

*Continued from previous page...*

Mol	Chain	Length	Quality of chain
2	G	2	 50% 50%
2	H	2	 100%

The following table lists non-polymeric compounds, carbohydrate monomers and non-standard residues in protein, DNA, RNA chains that are outliers for geometric or electron-density-fit criteria:

Mol	Type	Chain	Res	Chirality	Geometry	Clashes	Electron density
2	NAG	G	2	-	-	-	X
4	GOL	A	1388	-	-	X	-
4	GOL	A	1390	-	-	X	-
4	GOL	A	1391	-	-	X	-
4	GOL	B	1389	-	-	X	-
4	GOL	B	1390	-	-	X	-
4	GOL	C	1389	-	-	X	X
4	GOL	C	1390	-	-	X	-
4	GOL	C	1392	-	-	X	-
4	GOL	D	1387	-	-	X	-

## 2 Entry composition [i](#)

There are 5 unique types of molecules in this entry. The entry contains 13127 atoms, of which 0 are hydrogens and 0 are deuteriums.

In the tables below, the ZeroOcc column contains the number of atoms modelled with zero occupancy, the AltConf column contains the number of residues with at least one atom in alternate conformation and the Trace column contains the number of residues modelled with at most 2 atoms.

- Molecule 1 is a protein called CHITINASE-3 LIKE PROTEIN 1.

Mol	Chain	Residues	Atoms					ZeroOcc	AltConf	Trace
			Total	C	N	O	S			
1	A	362	2887	1842	498	536	11	20	8	1
1	B	362	2884	1843	499	531	11	10	6	1
1	C	359	2845	1817	492	525	11	14	2	1
1	D	360	2870	1833	497	529	11	31	6	1

There are 4 discrepancies between the modelled and reference sequences:

Chain	Residue	Modelled	Actual	Comment	Reference
A	311	ILE	THR	variant	UNP P36222
B	311	ILE	THR	variant	UNP P36222
C	311	ILE	THR	variant	UNP P36222
D	311	ILE	THR	variant	UNP P36222

- Molecule 2 is an oligosaccharide called 2-acetamido-2-deoxy-beta-D-glucopyranose-(1-4)-2-acetamido-2-deoxy-beta-D-glucopyranose.



Mol	Chain	Residues	Atoms				ZeroOcc	AltConf	Trace
			Total	C	N	O			
2	E	2	28	16	2	10	0	0	0
2	F	2	28	16	2	10	0	0	0
2	G	2	28	16	2	10	0	0	0

*Continued on next page...*

Continued from previous page...

Mol	Chain	Residues	Atoms				ZeroOcc	AltConf	Trace
			Total	C	N	O			
2	H	2	28	16	2	10	0	0	0

- Molecule 3 is SULFATE ION (three-letter code: SO4) (formula: O<sub>4</sub>S).



Mol	Chain	Residues	Atoms			ZeroOcc	AltConf
			Total	O	S		
3	A	1	5	4	1	0	0
3	B	1	5	4	1	0	0
3	B	1	5	4	1	0	0
3	B	1	5	4	1	0	0
3	B	1	5	4	1	0	0
3	C	1	5	4	1	0	0
3	C	1	5	4	1	0	0
3	C	1	5	4	1	0	0

- Molecule 4 is GLYCEROL (three-letter code: GOL) (formula: C<sub>3</sub>H<sub>8</sub>O<sub>3</sub>).



Mol	Chain	Residues	Atoms	ZeroOcc	AltConf
4	A	1	Total C O 6 3 3	0	0
4	A	1	Total C O 6 3 3	0	0
4	A	1	Total C O 6 3 3	0	0
4	A	1	Total C O 6 3 3	0	0
4	A	1	Total C O 6 3 3	0	0
4	A	1	Total C O 6 3 3	0	0
4	B	1	Total C O 6 3 3	0	0
4	B	1	Total C O 6 3 3	0	0
4	C	1	Total C O 6 3 3	0	0
4	C	1	Total C O 6 3 3	0	0
4	C	1	Total C O 6 3 3	0	0
4	C	1	Total C O 6 3 3	0	0
4	C	1	Total C O 6 3 3	0	0
4	D	1	Total C O 6 3 3	0	0

*Continued on next page...*

*Continued from previous page...*

Mol	Chain	Residues	Atoms			ZeroOcc	AltConf
4	D	1	Total	C	O	0	0
			6	3	3		
4	D	1	Total	C	O	0	0
			6	3	3		

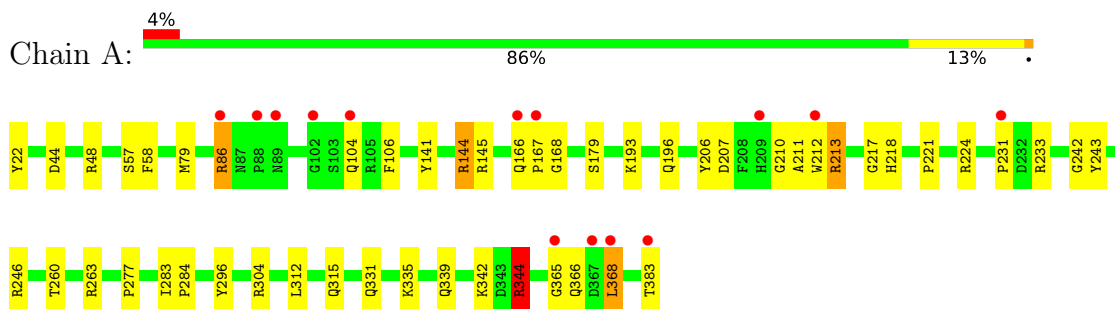
- Molecule 5 is water.

Mol	Chain	Residues	Atoms		ZeroOcc	AltConf
5	A	417	Total	O	0	0
			417	417		
5	B	448	Total	O	0	0
			448	448		
5	C	299	Total	O	0	0
			299	299		
5	D	229	Total	O	0	0
			229	229		

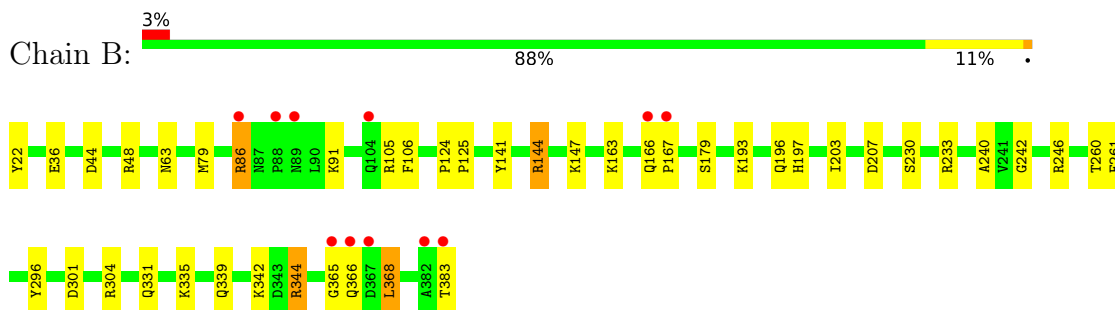
### 3 Residue-property plots [i](#)

These plots are drawn for all protein, RNA, DNA and oligosaccharide chains in the entry. The first graphic for a chain summarises the proportions of the various outlier classes displayed in the second graphic. The second graphic shows the sequence view annotated by issues in geometry and electron density. Residues are color-coded according to the number of geometric quality criteria for which they contain at least one outlier: green = 0, yellow = 1, orange = 2 and red = 3 or more. A red dot above a residue indicates a poor fit to the electron density ( $RSRZ > 2$ ). Stretches of 2 or more consecutive residues without any outlier are shown as a green connector. Residues present in the sample, but not in the model, are shown in grey.

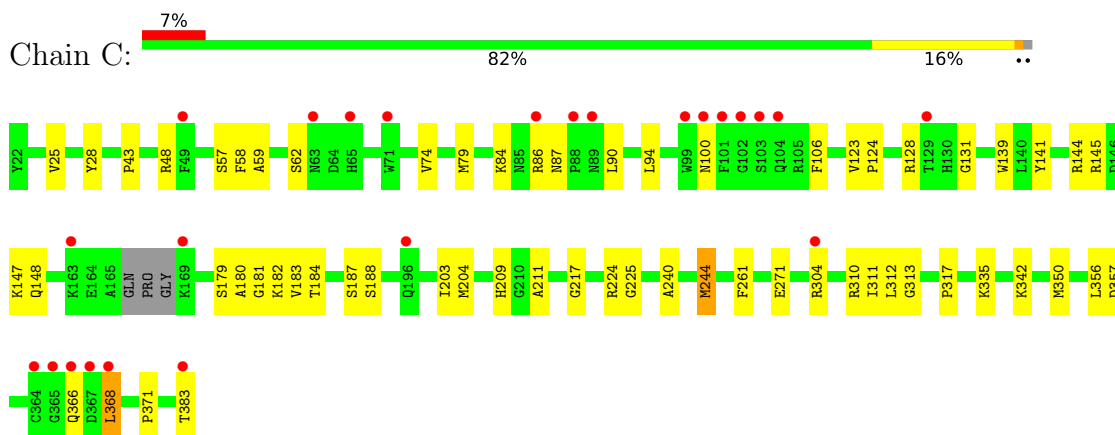
- Molecule 1: CHITINASE-3 LIKE PROTEIN 1



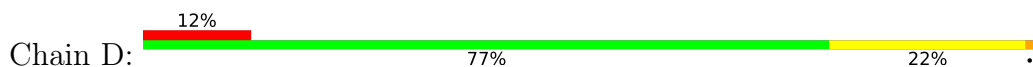
- Molecule 1: CHITINASE-3 LIKE PROTEIN 1



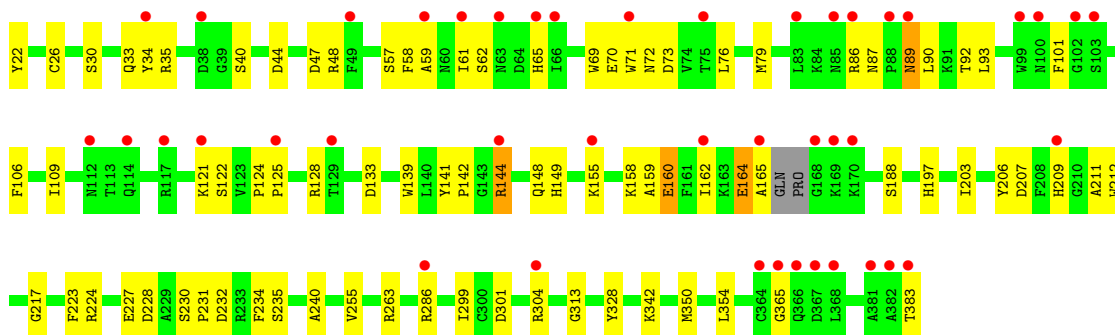
- Molecule 1: CHITINASE-3 LIKE PROTEIN 1



- Molecule 1: CHITINASE-3 LIKE PROTEIN 1







- Molecule 2: 2-acetamido-2-deoxy-beta-D-glucopyranose-(1-4)-2-acetamido-2-deoxy-beta-D-glucopyranose

Chain E: 50%

MAG1  
MAG2

- Molecule 2: 2-acetamido-2-deoxy-beta-D-glucopyranose-(1-4)-2-acetamido-2-deoxy-beta-D-glucopyranose

Chain F: 50%

MAG1  
MAG2

- Molecule 2: 2-acetamido-2-deoxy-beta-D-glucopyranose-(1-4)-2-acetamido-2-deoxy-beta-D-glucopyranose

Chain G: 50%

MAG1  
MAG2

- Molecule 2: 2-acetamido-2-deoxy-beta-D-glucopyranose-(1-4)-2-acetamido-2-deoxy-beta-D-glucopyranose

Chain H: 100%

MAG1  
MAG2

## 4 Data and refinement statistics

Property	Value	Source
Space group	P 21 21 21	Depositor
Cell constants a, b, c, $\alpha$ , $\beta$ , $\gamma$	109.56Å 122.05Å 136.10Å 90.00° 90.00° 90.00°	Depositor
Resolution (Å)	14.98 – 1.85 15.00 – 1.85	Depositor EDS
% Data completeness (in resolution range)	98.8 (14.98-1.85) 99.0 (15.00-1.85)	Depositor EDS
$R_{merge}$	0.08	Depositor
$R_{sym}$	(Not available)	Depositor
$\langle I/\sigma(I) \rangle$ <sup>1</sup>	3.94 (at 1.86Å)	Xtrriage
Refinement program	CNS 1.0	Depositor
R, $R_{free}$	0.197 , 0.225 0.190 , (Not available)	Depositor DCC
$R_{free}$ test set	728 reflections (0.47%)	wwPDB-VP
Wilson B-factor (Å <sup>2</sup> )	24.3	Xtrriage
Anisotropy	0.542	Xtrriage
Bulk solvent $k_{sol}$ (e/Å <sup>3</sup> ), $B_{sol}$ (Å <sup>2</sup> )	0.38 , 68.0	EDS
L-test for twinning <sup>2</sup>	$\langle  L  \rangle = 0.50$ , $\langle L^2 \rangle = 0.33$	Xtrriage
Estimated twinning fraction	No twinning to report.	Xtrriage
$F_o, F_c$ correlation	0.96	EDS
Total number of atoms	13127	wwPDB-VP
Average B, all atoms (Å <sup>2</sup> )	33.0	wwPDB-VP

Xtrriage's analysis on translational NCS is as follows: *The largest off-origin peak in the Patterson function is 17.57% of the height of the origin peak. No significant pseudotranslation is detected.*

<sup>1</sup>Intensities estimated from amplitudes.

<sup>2</sup>Theoretical values of  $\langle |L| \rangle$ ,  $\langle L^2 \rangle$  for acentric reflections are 0.5, 0.333 respectively for untwinned datasets, and 0.375, 0.2 for perfectly twinned datasets.

## 5 Model quality [i](#)

### 5.1 Standard geometry [i](#)

Bond lengths and bond angles in the following residue types are not validated in this section: NAG, SO4, GOL

The Z score for a bond length (or angle) is the number of standard deviations the observed value is removed from the expected value. A bond length (or angle) with  $|Z| > 5$  is considered an outlier worth inspection. RMSZ is the root-mean-square of all Z scores of the bond lengths (or angles).

Mol	Chain	Bond lengths		Bond angles	
		RMSZ	# Z  >5	RMSZ	# Z  >5
1	A	0.65	0/2998	0.79	3/4061 (0.1%)
1	B	0.67	0/2984	0.78	1/4041 (0.0%)
1	C	0.55	0/2927	0.74	3/3963 (0.1%)
1	D	0.53	0/2969	0.69	0/4018
All	All	0.61	0/11878	0.75	7/16083 (0.0%)

Chiral center outliers are detected by calculating the chiral volume of a chiral center and verifying if the center is modelled as a planar moiety or with the opposite hand. A planarity outlier is detected by checking planarity of atoms in a peptide group, atoms in a mainchain group or atoms of a sidechain that are expected to be planar.

Mol	Chain	#Chirality outliers	#Planarity outliers
1	C	0	1

There are no bond length outliers.

All (7) bond angle outliers are listed below:

Mol	Chain	Res	Type	Atoms	Z	Observed( $^{\circ}$ )	Ideal( $^{\circ}$ )
1	A	344	ARG	NE-CZ-NH2	-8.10	116.25	120.30
1	B	344	ARG	NE-CZ-NH2	-7.65	116.47	120.30
1	C	310	ARG	NE-CZ-NH2	-5.56	117.52	120.30
1	A	168	GLY	N-CA-C	5.21	126.12	113.10
1	A	312	LEU	C-N-CA	-5.20	111.39	122.30
1	C	188	SER	N-CA-C	5.05	124.62	111.00
1	C	310	ARG	NE-CZ-NH1	5.04	122.82	120.30

There are no chirality outliers.

All (1) planarity outliers are listed below:

Mol	Chain	Res	Type	Group
1	C	28	TYR	Sidechain

## 5.2 Too-close contacts [i](#)

In the following table, the Non-H and H(model) columns list the number of non-hydrogen atoms and hydrogen atoms in the chain respectively. The H(added) column lists the number of hydrogen atoms added and optimized by MolProbity. The Clashes column lists the number of clashes within the asymmetric unit, whereas Symm-Clashes lists symmetry-related clashes.

Mol	Chain	Non-H	H(model)	H(added)	Clashes	Symm-Clashes
1	A	2887	0	2798	61	0
1	B	2884	0	2807	48	0
1	C	2845	0	2764	69	0
1	D	2870	0	2785	70	0
2	E	28	0	25	0	0
2	F	28	0	25	4	0
2	G	28	0	25	0	0
2	H	28	0	25	0	0
3	A	5	0	0	0	0
3	B	20	0	0	0	0
3	C	15	0	0	0	0
4	A	36	0	48	24	0
4	B	12	0	16	11	0
4	C	30	0	40	39	0
4	D	18	0	24	9	0
5	A	417	0	0	21	0
5	B	448	0	0	14	0
5	C	299	0	0	10	0
5	D	229	0	0	8	0
All	All	13127	0	11382	262	0

The all-atom clashscore is defined as the number of clashes found per 1000 atoms (including hydrogen atoms). The all-atom clashscore for this structure is 11.

All (262) close contacts within the same asymmetric unit are listed below, sorted by their clash magnitude.

Atom-1	Atom-2	Interatomic distance (Å)	Clash overlap (Å)
5:B:2409:HOH:O	4:C:1389:GOL:H31	1.50	1.09
1:C:48:ARG:HD2	1:C:86:ARG:HB3	1.47	0.93
1:A:315:GLN:NE2	1:D:313:GLY:H	1.66	0.93
1:A:315:GLN:HE21	1:D:313:GLY:H	0.96	0.93

*Continued on next page...*

*Continued from previous page...*

Atom-1	Atom-2	Interatomic distance (Å)	Clash overlap (Å)
1:C:183:VAL:H	4:C:1390:GOL:C1	1.85	0.89
1:A:166[A]:GLN:HG2	1:A:167:PRO:HD3	1.55	0.88
1:D:211:ALA:HB3	4:D:1387:GOL:H32	1.55	0.85
1:C:48:ARG:CD	1:C:86:ARG:HB3	2.07	0.84
1:B:44:ASP:H	1:B:79:MET:HE2	1.42	0.84
1:D:211:ALA:CB	4:D:1387:GOL:H32	2.08	0.83
4:A:1388:GOL:O3	1:D:228:ASP:HB3	1.77	0.82
1:C:147:LYS:HB3	4:C:1392:GOL:H2	1.60	0.82
1:D:148[A]:GLN:HG2	5:D:2064:HOH:O	1.81	0.81
1:A:210:GLY:O	1:A:231:PRO:HD2	1.81	0.81
1:C:148:GLN:HG2	4:C:1392:GOL:H11	1.61	0.80
1:A:315:GLN:HE21	1:D:313:GLY:N	1.78	0.80
1:A:366:GLN:HB3	1:A:368:LEU:HD23	1.62	0.80
1:C:148:GLN:HG2	4:C:1392:GOL:C1	2.10	0.80
1:A:213:ARG:HG3	1:A:213:ARG:HH11	1.47	0.80
1:D:159:ALA:HA	1:D:162:ILE:HD12	1.63	0.79
1:C:183:VAL:H	4:C:1390:GOL:H11	1.47	0.79
1:A:210:GLY:O	1:A:231:PRO:CD	2.32	0.78
1:A:231:PRO:HD2	5:A:2264:HOH:O	1.84	0.77
1:C:183:VAL:H	4:C:1390:GOL:H12	1.53	0.74
1:B:63:ASN:H	4:B:1390:GOL:H11	1.53	0.73
1:D:211:ALA:HB3	4:D:1387:GOL:C3	2.18	0.73
1:A:193:LYS:O	1:A:196[A]:GLN:HG2	1.89	0.73
1:A:335[A]:LYS:HE3	5:A:2186:HOH:O	1.89	0.72
1:A:335[B]:LYS:HE3	5:A:2368:HOH:O	1.89	0.72
1:A:246:ARG:NE	4:A:1388:GOL:O1	2.19	0.72
1:C:313:GLY:N	4:C:1389:GOL:O2	2.22	0.71
1:C:271:GLU:HG3	5:C:2195:HOH:O	1.89	0.71
1:D:212:TRP:CE3	1:D:231:PRO:HG3	2.26	0.71
1:C:183:VAL:HB	4:C:1390:GOL:H11	1.72	0.71
1:D:207[B]:ASP:OD2	1:D:263:ARG:NH2	2.24	0.71
4:C:1389:GOL:H11	5:C:2078:HOH:O	1.92	0.70
1:B:166:GLN:HB2	1:B:167:PRO:HD3	1.74	0.70
1:B:207:ASP:OD2	4:B:1389:GOL:H12	1.91	0.69
1:B:335[A]:LYS:HE2	5:B:2426:HOH:O	1.92	0.69
4:B:1390:GOL:H12	2:F:1:NAG:O6	1.93	0.69
1:A:331[B]:GLN:OE1	5:A:2363:HOH:O	2.10	0.69
1:C:209:HIS:NE2	4:C:1391:GOL:H11	2.09	0.68
1:D:61:ILE:HG21	1:D:109:ILE:HD13	1.76	0.68
1:A:233:ARG:NH2	4:A:1390:GOL:H31	2.09	0.67
1:C:183:VAL:CB	4:C:1390:GOL:H11	2.23	0.67

*Continued on next page...*

*Continued from previous page...*

Atom-1	Atom-2	Interatomic distance (Å)	Clash overlap (Å)
1:C:335:LYS:HD2	5:C:2259:HOH:O	1.95	0.67
1:B:163:LYS:HA	1:B:166:GLN:HG3	1.77	0.67
1:C:148:GLN:HG2	4:C:1392:GOL:O1	1.96	0.66
1:B:44:ASP:H	1:B:79:MET:CE	2.09	0.66
1:D:89:ASN:N	1:D:89:ASN:HD22	1.92	0.66
1:B:144:ARG:NH1	5:B:2201:HOH:O	2.29	0.65
1:C:144:ARG:HG2	1:C:187:SER:HB2	1.77	0.65
1:D:142:PRO:HB2	1:D:188:SER:HB2	1.79	0.64
1:B:331:GLN:O	1:B:335[A]:LYS:HG3	1.97	0.64
1:D:30:SER:O	1:D:33:GLN:HG2	1.98	0.64
1:A:104:GLN:HB2	5:A:2129:HOH:O	1.96	0.63
1:C:312:LEU:HB2	4:C:1389:GOL:H2	1.80	0.63
1:D:148[A]:GLN:HG3	1:D:149:HIS:N	2.11	0.63
1:D:203:ILE:HD11	1:D:240:ALA:HB1	1.79	0.63
1:B:44:ASP:HB3	1:B:79:MET:HE3	1.80	0.63
1:A:366:GLN:HB3	1:A:368:LEU:CD2	2.29	0.62
1:A:166[A]:GLN:CG	1:A:167:PRO:HD3	2.26	0.62
4:A:1391:GOL:H12	5:A:2416:HOH:O	1.98	0.62
1:B:144:ARG:HH21	1:B:144:ARG:HG3	1.65	0.62
1:C:144:ARG:CG	1:C:187:SER:HB2	2.30	0.62
1:A:315:GLN:NE2	5:A:2349:HOH:O	2.32	0.62
1:B:44:ASP:N	1:B:79:MET:HE2	2.13	0.61
1:D:158:LYS:O	1:D:162:ILE:HG13	2.02	0.60
1:D:206:TYR:O	4:D:1385:GOL:H11	2.02	0.59
1:C:366:GLN:HB3	1:C:368:LEU:HD23	1.84	0.59
1:A:243:TYR:HD1	4:A:1388:GOL:H12	1.67	0.59
1:C:366:GLN:HB3	1:C:368:LEU:CD2	2.32	0.58
1:C:87:ASN:ND2	1:C:90:LEU:HB2	2.19	0.58
1:C:311:ILE:HG23	4:C:1389:GOL:H12	1.84	0.58
1:D:148[B]:GLN:NE2	5:D:2067:HOH:O	2.35	0.58
4:A:1391:GOL:C1	5:A:2416:HOH:O	2.50	0.58
1:C:312:LEU:HB2	4:C:1389:GOL:C2	2.34	0.58
1:A:213:ARG:HG3	1:A:213:ARG:NH1	2.18	0.58
1:D:92:THR:C	1:D:93:LEU:HD12	2.24	0.58
1:A:221:PRO:HG3	4:A:1391:GOL:H2	1.86	0.58
1:C:100:ASN:ND2	5:C:2054:HOH:O	2.36	0.57
1:D:69:TRP:HB3	5:D:2005:HOH:O	2.04	0.57
1:A:242:GLY:C	4:A:1388:GOL:H31	2.25	0.57
1:B:63:ASN:H	4:B:1390:GOL:C1	2.18	0.57
1:D:158:LYS:HG3	1:D:162:ILE:HD11	1.87	0.56
1:D:155:LYS:HG3	1:D:197:HIS:NE2	2.21	0.56

*Continued on next page...*

*Continued from previous page...*

Atom-1	Atom-2	Interatomic distance (Å)	Clash overlap (Å)
1:C:180:ALA:H	4:C:1388:GOL:C1	2.18	0.56
1:B:261:PHE:CZ	4:B:1389:GOL:H2	2.41	0.56
1:A:44:ASP:CG	1:A:79:MET:HE1	2.27	0.56
1:C:141:TYR:CE1	1:C:179:SER:HB2	2.40	0.56
1:A:44:ASP:H	1:A:79:MET:HE2	1.71	0.55
1:B:44:ASP:CG	1:B:79:MET:HE1	2.27	0.55
1:D:235:SER:O	4:D:1386:GOL:H11	2.06	0.55
1:A:144:ARG:NH1	5:A:2177:HOH:O	2.39	0.55
1:C:144:ARG:O	4:C:1392:GOL:C3	2.54	0.55
1:C:183:VAL:N	4:C:1390:GOL:H11	2.20	0.55
1:D:209:HIS:HA	4:D:1387:GOL:O3	2.07	0.55
1:C:211:ALA:HB2	1:C:217:GLY:HA3	1.88	0.54
1:C:182:LYS:N	4:C:1390:GOL:H12	2.23	0.54
1:B:36:GLU:HG3	5:B:2031:HOH:O	2.08	0.54
1:D:89:ASN:N	1:D:89:ASN:ND2	2.56	0.54
1:A:243:TYR:HA	4:A:1388:GOL:H12	1.88	0.54
1:B:260:THR:O	1:B:296:TYR:HB2	2.07	0.54
1:B:342:LYS:NZ	1:B:383:THR:N	2.55	0.54
1:B:144:ARG:HH21	1:B:144:ARG:CG	2.21	0.53
1:B:335[B]:LYS:HD2	5:B:2404:HOH:O	2.08	0.53
1:A:233:ARG:CZ	4:A:1390:GOL:C3	2.86	0.53
1:D:87:ASN:ND2	1:D:90:LEU:HB2	2.23	0.53
1:C:204:MET:HE3	5:C:2133:HOH:O	2.08	0.53
1:D:211:ALA:HB2	1:D:217:GLY:HA3	1.91	0.52
1:A:144:ARG:NH1	1:A:144:ARG:HG2	2.23	0.52
1:A:246:ARG:HH21	4:A:1388:GOL:H32	1.74	0.52
4:A:1387:GOL:H32	5:A:2411:HOH:O	2.08	0.52
1:D:70:GLU:N	1:D:73:ASP:OD2	2.39	0.52
1:B:207:ASP:CG	4:B:1389:GOL:H12	2.30	0.52
1:D:141:TYR:OH	4:D:1385:GOL:H32	2.10	0.52
1:C:144:ARG:O	4:C:1392:GOL:H32	2.10	0.52
1:C:148:GLN:HE21	4:C:1392:GOL:H11	1.75	0.52
1:D:133:ASP:HB3	5:D:2056:HOH:O	2.09	0.52
1:D:122:SER:O	1:D:125:PRO:HG2	2.10	0.52
1:C:144:ARG:NH1	5:C:2097:HOH:O	2.43	0.51
1:D:71:TRP:CZ3	1:D:72:ASN:HB3	2.46	0.51
1:B:366:GLN:HB3	1:B:368:LEU:HD23	1.93	0.51
1:C:147:LYS:HB3	4:C:1392:GOL:C2	2.38	0.51
1:A:206:TYR:O	4:A:1386:GOL:H32	2.11	0.51
1:B:86:ARG:HH11	1:B:86:ARG:HG2	1.74	0.51
4:D:1386:GOL:O1	5:D:2228:HOH:O	2.19	0.51

*Continued on next page...*

*Continued from previous page...*

Atom-1	Atom-2	Interatomic distance (Å)	Clash overlap (Å)
1:A:48:ARG:CD	1:A:86:ARG:HB3	2.40	0.51
1:C:183:VAL:N	4:C:1390:GOL:C1	2.67	0.51
1:D:342:LYS:NZ	1:D:383:THR:N	2.59	0.50
4:B:1390:GOL:H12	2:F:1:NAG:C6	2.41	0.50
1:D:149:HIS:HD2	5:D:2068:HOH:O	1.95	0.50
1:C:124:PRO:O	1:C:128:ARG:HG2	2.12	0.50
1:A:233:ARG:CZ	4:A:1390:GOL:H31	2.42	0.50
1:C:311:ILE:CG2	4:C:1389:GOL:H12	2.42	0.50
1:C:312:LEU:HB2	4:C:1389:GOL:C3	2.42	0.50
1:D:48:ARG:CD	1:D:86:ARG:HB3	2.42	0.50
1:D:255:VAL:HG12	1:D:350:MET:HB2	1.94	0.49
1:B:301[A]:ASP:OD1	1:B:304:ARG:NH1	2.45	0.49
1:B:193:LYS:HA	1:B:196:GLN:HE21	1.76	0.49
1:C:312:LEU:N	4:C:1389:GOL:H2	2.28	0.48
1:B:48:ARG:NH1	5:B:2058:HOH:O	2.44	0.48
1:B:44:ASP:CG	1:B:79:MET:CE	2.82	0.48
1:B:230:SER:HA	5:B:2301:HOH:O	2.13	0.48
1:C:357:ASP:OD1	1:C:371:PRO:HD2	2.13	0.48
1:B:342:LYS:HZ1	1:B:383:THR:N	2.10	0.48
1:C:312:LEU:HB2	4:C:1389:GOL:H32	1.94	0.48
1:C:203:ILE:HD11	1:C:240:ALA:HB1	1.95	0.47
1:B:48:ARG:NE	5:B:2057:HOH:O	2.47	0.47
1:C:183:VAL:CG2	4:C:1390:GOL:H11	2.44	0.47
1:D:35:ARG:O	1:D:40:SER:HB2	2.14	0.47
4:A:1389:GOL:H11	5:A:2414:HOH:O	2.13	0.47
1:C:184:THR:H	4:C:1390:GOL:C3	2.27	0.47
1:D:86:ARG:HG2	1:D:86:ARG:HH11	1.79	0.47
1:A:144:ARG:HG3	5:A:2176:HOH:O	2.14	0.47
1:D:33:GLN:HG3	1:D:34:TYR:N	2.30	0.47
1:D:124:PRO:O	1:D:128:ARG:HG2	2.15	0.47
1:A:207:ASP:HB3	5:A:2282:HOH:O	2.15	0.47
1:D:211:ALA:H	4:D:1387:GOL:H32	1.80	0.46
4:B:1390:GOL:H32	2:F:1:NAG:H62	1.97	0.46
1:A:260:THR:O	1:A:296:TYR:HB2	2.15	0.46
1:B:44:ASP:CB	1:B:79:MET:HE3	2.45	0.46
1:A:166[A]:GLN:CG	1:A:167:PRO:CD	2.93	0.46
1:A:44:ASP:N	1:A:79:MET:HE2	2.30	0.46
1:D:224:ARG:O	1:D:224:ARG:HG2	2.15	0.46
1:B:233:ARG:HB2	5:B:2288:HOH:O	2.15	0.46
1:A:144:ARG:HG2	1:A:144:ARG:HH11	1.80	0.46
1:C:180:ALA:H	4:C:1388:GOL:H12	1.81	0.46

*Continued on next page...*



*Continued from previous page...*

Atom-1	Atom-2	Interatomic distance (Å)	Clash overlap (Å)
1:C:183:VAL:N	4:C:1390:GOL:H12	2.26	0.46
4:C:1389:GOL:C1	5:C:2291:HOH:O	2.64	0.46
4:B:1390:GOL:H32	2:F:2:NAG:HN2	1.80	0.46
1:D:62:SER:O	1:D:65[A]:HIS:ND1	2.49	0.46
1:D:223:PHE:HB2	1:D:313:GLY:O	2.16	0.46
1:B:86:ARG:HG2	1:B:86:ARG:NH1	2.31	0.45
1:B:366:GLN:HB3	1:B:368:LEU:CD2	2.45	0.45
1:D:232:ASP:OD1	1:D:234:PHE:N	2.49	0.45
1:A:342:LYS:NZ	1:A:383:THR:N	2.63	0.45
1:B:22:TYR:CZ	1:B:342:LYS:HG2	2.51	0.45
1:D:124:PRO:N	1:D:125:PRO:HD2	2.31	0.45
4:A:1388:GOL:H11	5:A:2412:HOH:O	2.15	0.45
1:D:144:ARG:HG2	5:D:2063:HOH:O	2.15	0.45
4:A:1388:GOL:C1	5:A:2412:HOH:O	2.64	0.45
1:C:342:LYS:NZ	1:C:383:THR:N	2.65	0.45
1:A:243:TYR:HD1	4:A:1388:GOL:C1	2.29	0.45
1:C:183:VAL:HG23	4:C:1390:GOL:H11	1.99	0.45
1:A:233:ARG:CZ	4:A:1390:GOL:H32	2.47	0.45
1:B:203:ILE:HD11	1:B:240:ALA:HB1	1.99	0.45
1:C:74:VAL:HG23	5:C:2037:HOH:O	2.17	0.45
1:C:368:LEU:HA	5:C:2278:HOH:O	2.17	0.45
1:A:211:ALA:HB2	1:A:217:GLY:HA3	1.99	0.44
1:D:164:GLU:O	1:D:165:ALA:HB2	2.18	0.44
1:B:207:ASP:OD2	4:B:1389:GOL:H31	2.17	0.44
1:D:57:SER:HA	1:D:58:PHE:HA	1.71	0.44
1:A:207:ASP:OD1	1:A:263:ARG:NH1	2.50	0.44
1:C:304:ARG:HH11	1:C:304:ARG:HG3	1.82	0.44
1:D:69:TRP:N	1:D:73:ASP:OD2	2.40	0.44
1:C:43:PRO:HB2	1:C:79:MET:HB2	2.00	0.44
1:D:26:CYS:HB3	1:D:354:LEU:HG	1.99	0.44
4:C:1389:GOL:H2	5:C:2246:HOH:O	2.17	0.44
1:D:71:TRP:CE3	1:D:72:ASN:HB3	2.53	0.44
1:A:213:ARG:HD2	1:A:213:ARG:C	2.38	0.44
1:A:344:ARG:HD2	5:A:2375:HOH:O	2.16	0.44
1:B:335[A]:LYS:HD2	5:B:2405:HOH:O	2.17	0.44
1:D:301:ASP:HA	1:D:304[A]:ARG:NH1	2.33	0.44
1:A:141:TYR:CE1	1:A:179:SER:HB2	2.54	0.43
1:D:61:ILE:CG2	1:D:109:ILE:HD13	2.46	0.43
1:A:277:PRO:HB3	1:C:144:ARG:HD3	1.99	0.43
4:A:1388:GOL:O3	1:D:227[A]:GLU:OE2	2.17	0.43
1:D:232:ASP:OD1	1:D:232:ASP:C	2.57	0.43

*Continued on next page...*

*Continued from previous page...*

Atom-1	Atom-2	Interatomic distance (Å)	Clash overlap (Å)
1:D:301:ASP:HA	1:D:304[B]:ARG:NH1	2.33	0.43
1:B:261:PHE:CE2	4:B:1389:GOL:H2	2.54	0.43
1:C:139:TRP:O	1:C:141:TYR:HA	2.19	0.43
4:A:1388:GOL:O2	1:D:227[A]:GLU:OE2	2.35	0.43
1:C:184:THR:H	4:C:1390:GOL:H31	1.83	0.43
1:D:299:ILE:HD13	1:D:328:TYR:CB	2.49	0.43
1:A:144:ARG:HH11	1:A:144:ARG:CG	2.30	0.42
1:B:242:GLY:O	1:B:246[B]:ARG:HG3	2.19	0.42
1:C:203:ILE:HD12	1:C:244:MET:HG3	2.00	0.42
1:C:209:HIS:CE1	4:C:1391:GOL:H11	2.54	0.42
1:A:212:TRP:CZ2	1:A:231:PRO:HA	2.54	0.42
1:C:123:VAL:HB	1:C:124:PRO:HD3	2.01	0.42
1:A:57:SER:HA	1:A:58:PHE:HA	1.69	0.42
1:C:57:SER:HB3	1:C:58:PHE:CD1	2.54	0.42
1:D:342:LYS:HZ2	1:D:383:THR:N	2.17	0.42
1:A:144:ARG:NH2	5:A:2173:HOH:O	2.52	0.42
1:C:144:ARG:HG3	1:C:187:SER:HB2	2.02	0.42
1:D:121:LYS:HA	1:D:160:GLU:OE1	2.20	0.42
1:B:144:ARG:CG	1:B:144:ARG:NH2	2.81	0.42
1:C:181:GLY:HA3	4:C:1390:GOL:H32	2.02	0.42
1:B:147:LYS:NZ	5:B:2207:HOH:O	2.34	0.42
1:C:25:VAL:O	1:C:350:MET:HA	2.20	0.42
1:C:59:ALA:HB2	1:C:94:LEU:HD21	2.02	0.42
1:A:233:ARG:NH2	4:A:1390:GOL:C3	2.80	0.41
1:C:148:GLN:CG	4:C:1392:GOL:O1	2.67	0.41
1:A:224:ARG:NH2	4:A:1390:GOL:O1	2.53	0.41
1:D:22:TYR:CZ	1:D:342:LYS:HG2	2.55	0.41
1:C:366:GLN:O	1:C:368:LEU:HD23	2.19	0.41
1:D:47:ASP:OD1	1:D:47:ASP:C	2.59	0.41
1:B:105:ARG:HD2	5:B:2147:HOH:O	2.20	0.41
1:A:218:HIS:O	4:A:1391:GOL:O1	2.39	0.41
1:B:124:PRO:HD2	1:B:125:PRO:HD2	2.03	0.41
1:B:141:TYR:CE1	1:B:179:SER:HB2	2.55	0.41
1:C:84:LYS:NZ	1:C:131:GLY:O	2.49	0.41
1:C:261:PHE:HB3	1:C:356:LEU:HD13	2.02	0.41
1:B:197:HIS:HD2	5:B:2215:HOH:O	2.03	0.41
1:A:335[B]:LYS:HE2	5:A:2402:HOH:O	2.21	0.41
1:D:59:ALA:HA	5:D:2022:HOH:O	2.20	0.41
1:D:44:ASP:H	1:D:79:MET:HE2	1.85	0.40
1:D:61:ILE:HD12	1:D:101:PHE:CZ	2.57	0.40
1:B:91:LYS:HD2	5:B:2128:HOH:O	2.22	0.40

*Continued on next page...*

Continued from previous page...

Atom-1	Atom-2	Interatomic distance (Å)	Clash overlap (Å)
1:D:139:TRP:O	1:D:141:TYR:HA	2.22	0.40
1:A:210:GLY:O	1:A:231:PRO:CG	2.69	0.40
1:C:225:GLY:HA2	1:C:313:GLY:HA3	2.03	0.40
1:A:22:TYR:CZ	1:A:342:LYS:HG2	2.56	0.40
1:A:283:ILE:HA	1:A:284:PRO:HD3	1.98	0.40
1:D:230:SER:HA	1:D:231:PRO:HD3	1.95	0.40

There are no symmetry-related clashes.

## 5.3 Torsion angles [i](#)

### 5.3.1 Protein backbone [i](#)

In the following table, the Percentiles column shows the percent Ramachandran outliers of the chain as a percentile score with respect to all X-ray entries followed by that with respect to entries of similar resolution.

The Analysed column shows the number of residues for which the backbone conformation was analysed, and the total number of residues.

Mol	Chain	Analysed	Favoured	Allowed	Outliers	Percentiles	
1	A	368/362 (102%)	358 (97%)	8 (2%)	2 (0%)	29	15
1	B	366/362 (101%)	358 (98%)	7 (2%)	1 (0%)	41	26
1	C	357/362 (99%)	347 (97%)	10 (3%)	0	100	100
1	D	362/362 (100%)	352 (97%)	9 (2%)	1 (0%)	41	26
All	All	1453/1448 (100%)	1415 (97%)	34 (2%)	4 (0%)	41	26

All (4) Ramachandran outliers are listed below:

Mol	Chain	Res	Type
1	A	365	GLY
1	D	365	GLY
1	A	145	ARG
1	B	365	GLY

### 5.3.2 Protein sidechains [i](#)

In the following table, the Percentiles column shows the percent sidechain outliers of the chain as a percentile score with respect to all X-ray entries followed by that with respect to entries of similar

resolution.

The Analysed column shows the number of residues for which the sidechain conformation was analysed, and the total number of residues.

Mol	Chain	Analysed	Rotameric	Outliers	Percentiles	
1	A	309/302 (102%)	303 (98%)	6 (2%)	57	43
1	B	307/302 (102%)	302 (98%)	5 (2%)	62	49
1	C	301/302 (100%)	294 (98%)	7 (2%)	50	34
1	D	305/302 (101%)	298 (98%)	7 (2%)	50	34
All	All	1222/1208 (101%)	1197 (98%)	25 (2%)	53	40

All (25) residues with a non-rotameric sidechain are listed below:

Mol	Chain	Res	Type
1	A	86	ARG
1	A	106	PHE
1	A	144	ARG
1	A	213	ARG
1	A	344	ARG
1	A	368	LEU
1	B	86	ARG
1	B	106	PHE
1	B	144	ARG
1	B	344	ARG
1	B	368	LEU
1	C	62	SER
1	C	106	PHE
1	C	145	ARG
1	C	224	ARG
1	C	244	MET
1	C	317	PRO
1	C	368	LEU
1	D	76	LEU
1	D	89	ASN
1	D	106	PHE
1	D	144	ARG
1	D	160	GLU
1	D	164	GLU
1	D	286	ARG

Sometimes sidechains can be flipped to improve hydrogen bonding and reduce clashes. All (19) such sidechains are listed below:

Mol	Chain	Res	Type
1	A	85	ASN
1	A	89	ASN
1	A	130	HIS
1	A	148	GLN
1	A	197	HIS
1	A	315	GLN
1	B	85	ASN
1	B	89	ASN
1	B	196	GLN
1	B	197	HIS
1	C	85	ASN
1	C	87	ASN
1	C	148	GLN
1	D	63	ASN
1	D	85	ASN
1	D	89	ASN
1	D	130	HIS
1	D	171	GLN
1	D	345	GLN

### 5.3.3 RNA [i](#)

There are no RNA molecules in this entry.

## 5.4 Non-standard residues in protein, DNA, RNA chains [i](#)

There are no non-standard protein/DNA/RNA residues in this entry.

## 5.5 Carbohydrates [i](#)

8 monosaccharides are modelled in this entry.

In the following table, the Counts columns list the number of bonds (or angles) for which Mogul statistics could be retrieved, the number of bonds (or angles) that are observed in the model and the number of bonds (or angles) that are defined in the Chemical Component Dictionary. The Link column lists molecule types, if any, to which the group is linked. The Z score for a bond length (or angle) is the number of standard deviations the observed value is removed from the expected value. A bond length (or angle) with  $|Z| > 2$  is considered an outlier worth inspection. RMSZ is the root-mean-square of all Z scores of the bond lengths (or angles).

Mol	Type	Chain	Res	Link	Bond lengths			Bond angles		
					Counts	RMSZ	$\# Z  > 2$	Counts	RMSZ	$\# Z  > 2$
2	NAG	E	1	2,1	14,14,15	0.65	0	17,19,21	1.00	1 (5%)

Mol	Type	Chain	Res	Link	Bond lengths			Bond angles		
					Counts	RMSZ	# Z  > 2	Counts	RMSZ	# Z  > 2
2	NAG	E	2	2	14,14,15	0.62	0	17,19,21	0.64	0
2	NAG	F	1	2,1	14,14,15	0.79	1 (7%)	17,19,21	0.86	0
2	NAG	F	2	2	14,14,15	0.58	0	17,19,21	0.66	0
2	NAG	G	1	2,1	14,14,15	0.47	0	17,19,21	0.87	1 (5%)
2	NAG	G	2	2	14,14,15	0.51	0	17,19,21	0.63	0
2	NAG	H	1	2,1	14,14,15	0.58	0	17,19,21	0.67	1 (5%)
2	NAG	H	2	2	14,14,15	0.54	0	17,19,21	0.71	1 (5%)

In the following table, the Chirals column lists the number of chiral outliers, the number of chiral centers analysed, the number of these observed in the model and the number defined in the Chemical Component Dictionary. Similar counts are reported in the Torsion and Rings columns. '-' means no outliers of that kind were identified.

Mol	Type	Chain	Res	Link	Chirals	Torsions	Rings
2	NAG	E	1	2,1	-	2/6/23/26	0/1/1/1
2	NAG	E	2	2	-	0/6/23/26	0/1/1/1
2	NAG	F	1	2,1	-	2/6/23/26	0/1/1/1
2	NAG	F	2	2	-	2/6/23/26	0/1/1/1
2	NAG	G	1	2,1	-	4/6/23/26	0/1/1/1
2	NAG	G	2	2	-	4/6/23/26	0/1/1/1
2	NAG	H	1	2,1	-	4/6/23/26	0/1/1/1
2	NAG	H	2	2	-	2/6/23/26	0/1/1/1

All (1) bond length outliers are listed below:

Mol	Chain	Res	Type	Atoms	Z	Observed(Å)	Ideal(Å)
2	F	1	NAG	C1-C2	2.29	1.55	1.52

All (4) bond angle outliers are listed below:

Mol	Chain	Res	Type	Atoms	Z	Observed(°)	Ideal(°)
2	G	1	NAG	C2-N2-C7	-2.69	119.07	122.90
2	E	1	NAG	C2-N2-C7	-2.24	119.71	122.90
2	H	2	NAG	C2-N2-C7	-2.15	119.84	122.90
2	H	1	NAG	C2-N2-C7	-2.11	119.90	122.90

There are no chirality outliers.

All (20) torsion outliers are listed below:

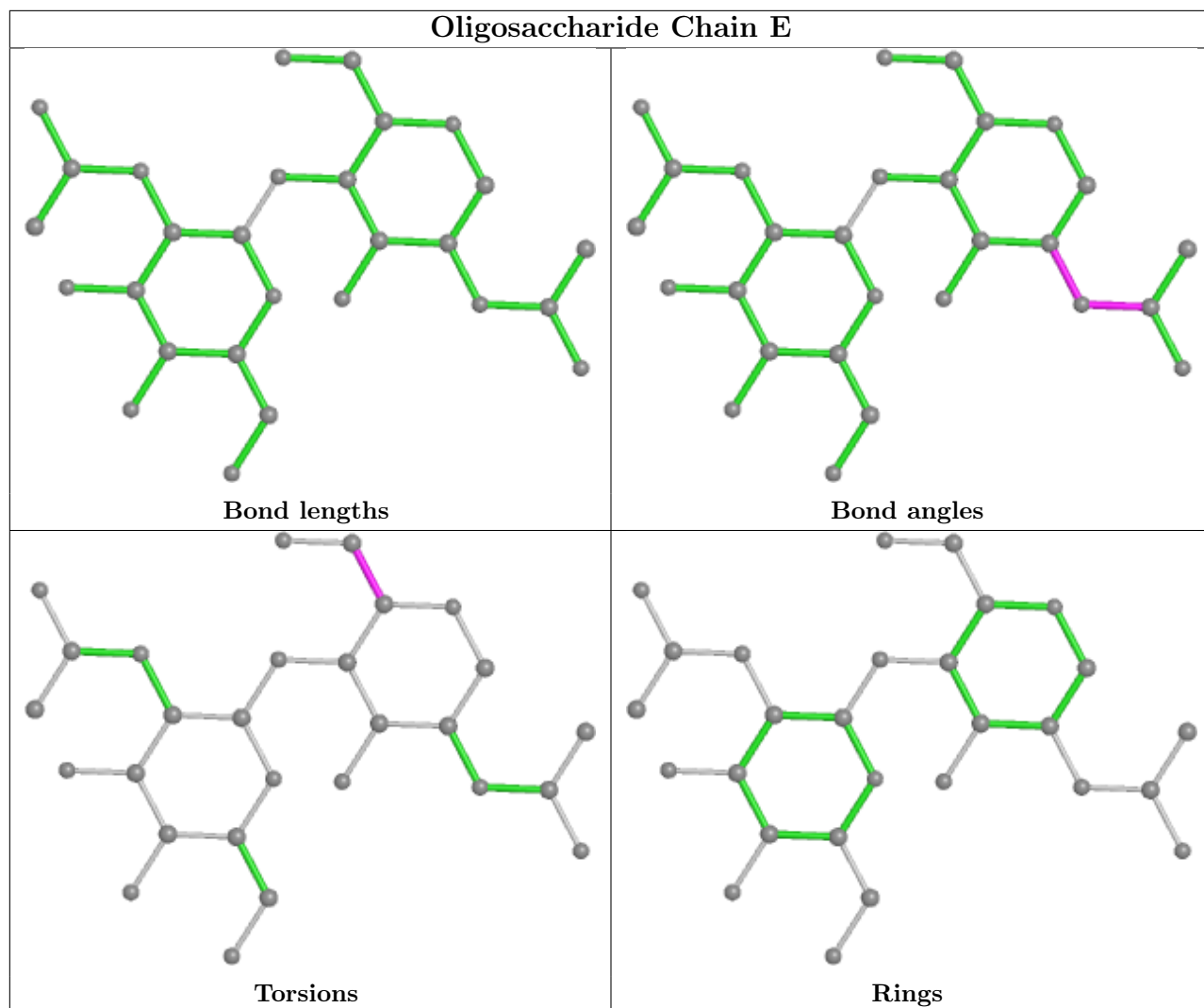
Mol	Chain	Res	Type	Atoms
2	G	2	NAG	C8-C7-N2-C2
2	G	2	NAG	O7-C7-N2-C2
2	H	1	NAG	C8-C7-N2-C2
2	H	1	NAG	O7-C7-N2-C2
2	H	2	NAG	C8-C7-N2-C2
2	H	2	NAG	O7-C7-N2-C2
2	G	2	NAG	O5-C5-C6-O6
2	E	1	NAG	O5-C5-C6-O6
2	E	1	NAG	C4-C5-C6-O6
2	G	2	NAG	C4-C5-C6-O6
2	F	1	NAG	O5-C5-C6-O6
2	G	1	NAG	C4-C5-C6-O6
2	F	1	NAG	C4-C5-C6-O6
2	H	1	NAG	O5-C5-C6-O6
2	H	1	NAG	C4-C5-C6-O6
2	G	1	NAG	O5-C5-C6-O6
2	G	1	NAG	C8-C7-N2-C2
2	F	2	NAG	C4-C5-C6-O6
2	G	1	NAG	O7-C7-N2-C2
2	F	2	NAG	O5-C5-C6-O6

There are no ring outliers.

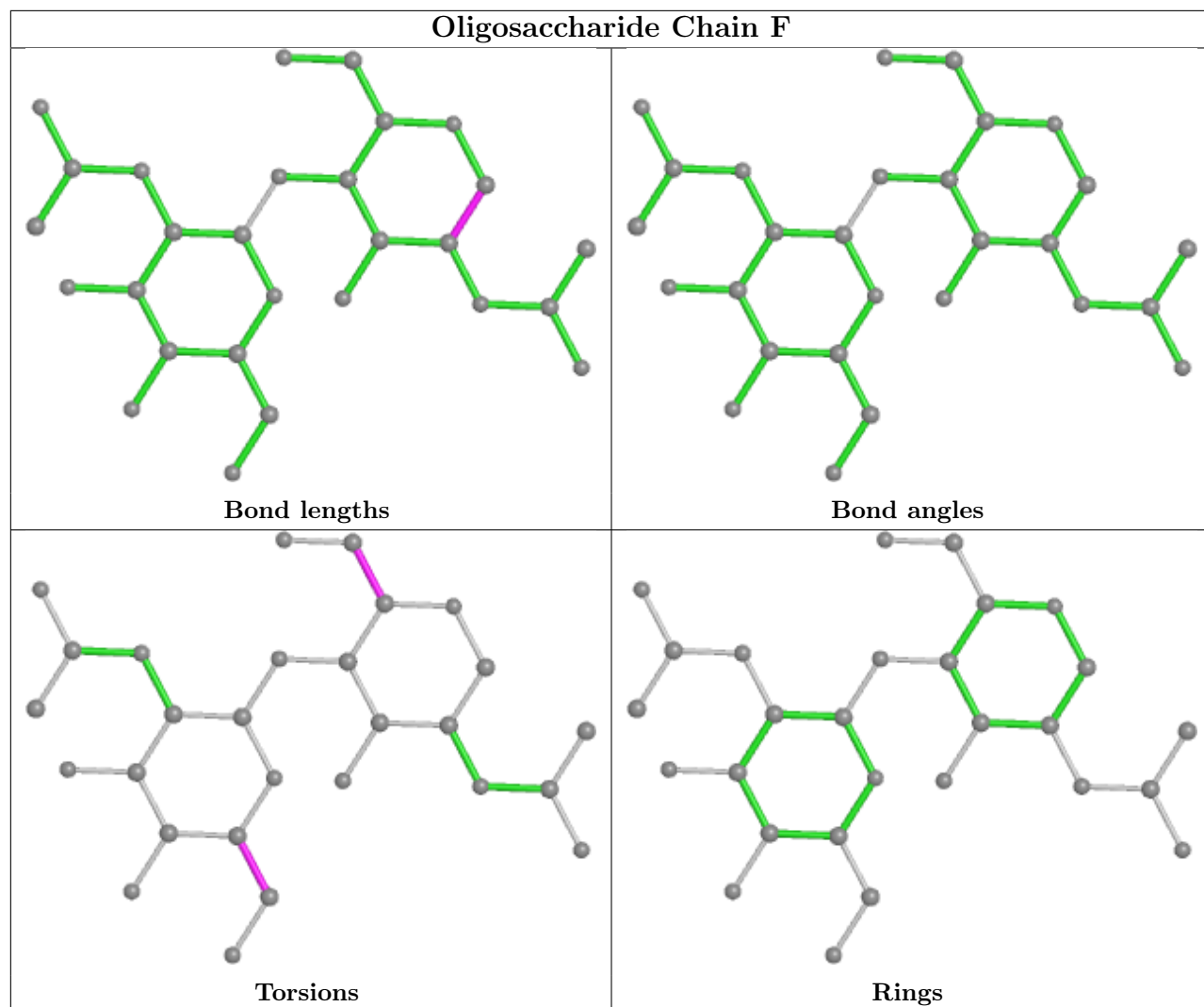
2 monomers are involved in 4 short contacts:

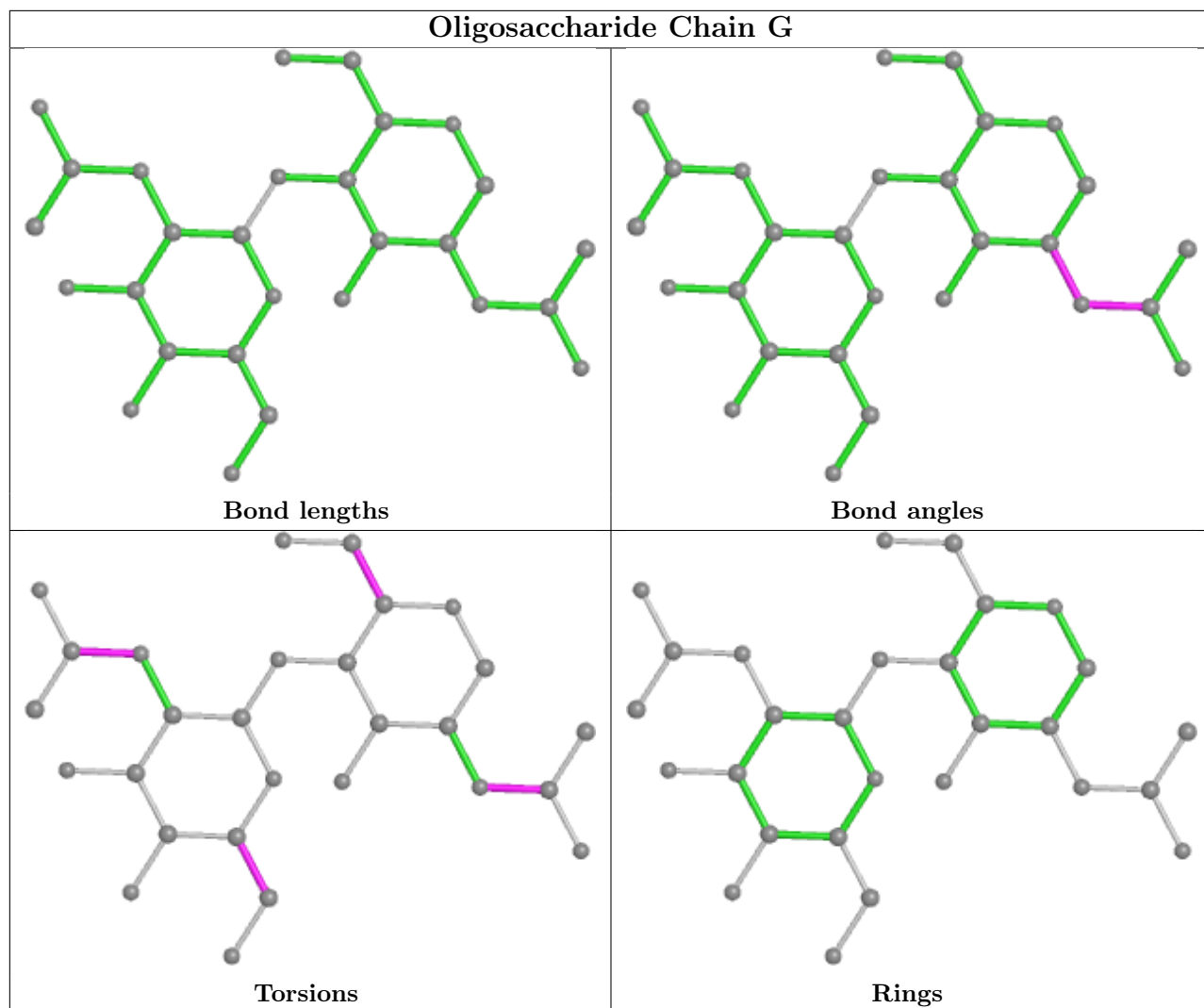
Mol	Chain	Res	Type	Clashes	Symm-Clashes
2	F	2	NAG	1	0
2	F	1	NAG	3	0

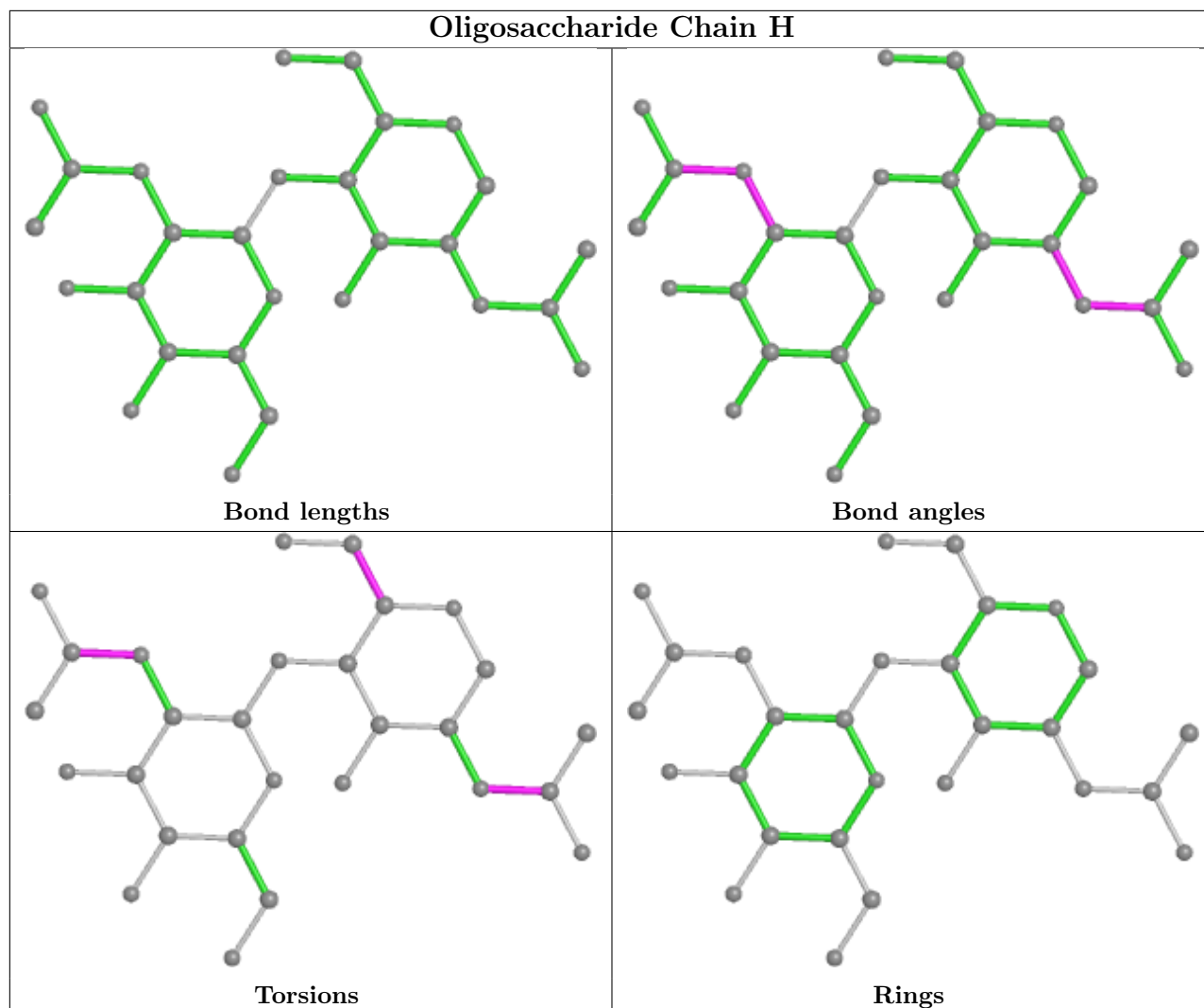
The following is a two-dimensional graphical depiction of Mogul quality analysis of bond lengths, bond angles, torsion angles, and ring geometry for oligosaccharide.











## 5.6 Ligand geometry [i](#)

24 ligands are modelled in this entry.

In the following table, the Counts columns list the number of bonds (or angles) for which Mogul statistics could be retrieved, the number of bonds (or angles) that are observed in the model and the number of bonds (or angles) that are defined in the Chemical Component Dictionary. The Link column lists molecule types, if any, to which the group is linked. The Z score for a bond length (or angle) is the number of standard deviations the observed value is removed from the expected value. A bond length (or angle) with  $|Z| > 2$  is considered an outlier worth inspection. RMSZ is the root-mean-square of all Z scores of the bond lengths (or angles).

Mol	Type	Chain	Res	Link	Bond lengths			Bond angles		
					Counts	RMSZ	$\# Z  > 2$	Counts	RMSZ	$\# Z  > 2$
4	GOL	A	1387	-	5,5,5	0.43	0	5,5,5	0.19	0
3	SO4	C	1386	-	4,4,4	0.18	0	6,6,6	0.24	0
3	SO4	C	1385	-	4,4,4	0.18	0	6,6,6	0.25	0
4	GOL	C	1392	-	5,5,5	0.27	0	5,5,5	0.47	0

Mol	Type	Chain	Res	Link	Bond lengths			Bond angles		
					Counts	RMSZ	# Z  > 2	Counts	RMSZ	# Z  > 2
3	SO4	A	1385	-	4,4,4	0.25	0	6,6,6	0.17	0
4	GOL	B	1390	-	5,5,5	0.28	0	5,5,5	0.28	0
4	GOL	A	1390	-	5,5,5	0.32	0	5,5,5	0.33	0
4	GOL	A	1391	-	5,5,5	0.35	0	5,5,5	0.41	0
4	GOL	A	1386	-	5,5,5	0.26	0	5,5,5	0.27	0
4	GOL	A	1389	-	5,5,5	0.40	0	5,5,5	0.50	0
4	GOL	D	1385	-	5,5,5	0.48	0	5,5,5	0.20	0
3	SO4	B	1387	-	4,4,4	0.30	0	6,6,6	0.21	0
4	GOL	D	1386	-	5,5,5	0.34	0	5,5,5	0.36	0
3	SO4	B	1388	-	4,4,4	0.22	0	6,6,6	0.34	0
4	GOL	B	1389	-	5,5,5	0.42	0	5,5,5	0.25	0
4	GOL	C	1391	-	5,5,5	0.41	0	5,5,5	0.19	0
3	SO4	B	1386	-	4,4,4	0.32	0	6,6,6	0.49	0
3	SO4	C	1387	-	4,4,4	0.36	0	6,6,6	0.11	0
4	GOL	C	1388	-	5,5,5	0.36	0	5,5,5	0.56	0
4	GOL	D	1387	-	5,5,5	0.33	0	5,5,5	0.34	0
4	GOL	C	1390	-	5,5,5	0.21	0	5,5,5	0.35	0
4	GOL	C	1389	-	5,5,5	0.45	0	5,5,5	0.38	0
4	GOL	A	1388	-	5,5,5	0.21	0	5,5,5	0.52	0
3	SO4	B	1385	-	4,4,4	0.31	0	6,6,6	0.24	0

In the following table, the Chirals column lists the number of chiral outliers, the number of chiral centers analysed, the number of these observed in the model and the number defined in the Chemical Component Dictionary. Similar counts are reported in the Torsion and Rings columns. '-' means no outliers of that kind were identified.

Mol	Type	Chain	Res	Link	Chirals	Torsions	Rings
4	GOL	B	1390	-	-	0/4/4/4	-
4	GOL	A	1387	-	-	0/4/4/4	-
4	GOL	A	1390	-	-	0/4/4/4	-
4	GOL	A	1391	-	-	0/4/4/4	-
4	GOL	A	1386	-	-	0/4/4/4	-
4	GOL	A	1389	-	-	0/4/4/4	-
4	GOL	C	1388	-	-	0/4/4/4	-
4	GOL	C	1392	-	-	0/4/4/4	-
4	GOL	D	1387	-	-	0/4/4/4	-
4	GOL	D	1386	-	-	0/4/4/4	-
4	GOL	C	1390	-	-	0/4/4/4	-
4	GOL	C	1389	-	-	0/4/4/4	-
4	GOL	A	1388	-	-	0/4/4/4	-
4	GOL	D	1385	-	-	0/4/4/4	-
4	GOL	B	1389	-	-	0/4/4/4	-
4	GOL	C	1391	-	-	0/4/4/4	-

There are no bond length outliers.

There are no bond angle outliers.

There are no chirality outliers.

There are no torsion outliers.

There are no ring outliers.

16 monomers are involved in 83 short contacts:

Mol	Chain	Res	Type	Clashes	Symm-Clashes
4	A	1387	GOL	1	0
4	C	1392	GOL	9	0
4	B	1390	GOL	6	0
4	A	1390	GOL	6	0
4	A	1391	GOL	4	0
4	A	1386	GOL	1	0
4	A	1389	GOL	1	0
4	D	1385	GOL	2	0
4	D	1386	GOL	2	0
4	B	1389	GOL	5	0
4	C	1391	GOL	2	0
4	C	1388	GOL	2	0
4	D	1387	GOL	5	0
4	C	1390	GOL	14	0
4	C	1389	GOL	12	0
4	A	1388	GOL	11	0

## 5.7 Other polymers [i](#)

There are no such residues in this entry.

## 5.8 Polymer linkage issues [i](#)

There are no chain breaks in this entry.

## 6 Fit of model and data [i](#)

### 6.1 Protein, DNA and RNA chains [i](#)

In the following table, the column labelled ‘#RSRZ > 2’ contains the number (and percentage) of RSRZ outliers, followed by percent RSRZ outliers for the chain as percentile scores relative to all X-ray entries and entries of similar resolution. The OWAB column contains the minimum, median, 95<sup>th</sup> percentile and maximum values of the occupancy-weighted average B-factor per residue. The column labelled ‘Q < 0.9’ lists the number of (and percentage) of residues with an average occupancy less than 0.9.

Mol	Chain	Analysed	<RSRZ>	#RSRZ>2	OWAB(Å <sup>2</sup> )	Q<0.9
1	A	362/362 (100%)	-0.18	14 (3%) 39 38	14, 23, 45, 57	4 (1%)
1	B	362/362 (100%)	-0.24	11 (3%) 50 48	13, 24, 41, 64	2 (0%)
1	C	359/362 (99%)	0.11	24 (6%) 17 17	17, 33, 54, 70	3 (0%)
1	D	360/362 (99%)	0.51	43 (11%) 4 4	16, 37, 63, 76	7 (1%)
All	All	1443/1448 (99%)	0.05	92 (6%) 19 18	13, 28, 56, 76	16 (1%)

All (92) RSRZ outliers are listed below:

Mol	Chain	Res	Type	RSRZ
1	D	168	GLY	7.4
1	C	365	GLY	6.1
1	C	383	THR	5.6
1	D	365	GLY	5.5
1	C	104	GLN	5.1
1	D	165	ALA	4.9
1	D	63	ASN	4.9
1	C	99	TRP	4.7
1	D	71	TRP	4.6
1	D	65[A]	HIS	4.6
1	D	89	ASN	4.4
1	C	367	ASP	4.3
1	C	89	ASN	4.2
1	C	86	ARG	4.2
1	D	169	LYS	4.1
1	D	88	PRO	4.1
1	D	170	LYS	4.0
1	D	129	THR	4.0
1	A	365	GLY	3.9
1	D	144	ARG	3.9
1	D	99	TRP	3.8

*Continued on next page...*

*Continued from previous page...*

<b>Mol</b>	<b>Chain</b>	<b>Res</b>	<b>Type</b>	<b>RSRZ</b>
1	D	368	LEU	3.7
1	B	366	GLN	3.7
1	B	365	GLY	3.7
1	C	103	SER	3.7
1	A	166[A]	GLN	3.5
1	B	166	GLN	3.5
1	D	367	ASP	3.4
1	B	383	THR	3.3
1	C	102	GLY	3.3
1	C	368	LEU	3.3
1	D	86	ARG	3.2
1	A	104	GLN	3.2
1	A	167	PRO	3.2
1	A	209	HIS	3.1
1	D	382	ALA	3.0
1	D	66	ILE	3.0
1	C	366	GLN	3.0
1	D	304[A]	ARG	3.0
1	A	86	ARG	3.0
1	D	366	GLN	2.9
1	D	112	ASN	2.9
1	D	103	SER	2.8
1	C	169	LYS	2.8
1	A	368	LEU	2.8
1	C	364	CYS	2.8
1	B	382	ALA	2.7
1	C	88	PRO	2.7
1	C	129	THR	2.7
1	B	367	ASP	2.7
1	C	65	HIS	2.7
1	D	59	ALA	2.7
1	B	104	GLN	2.7
1	D	75	THR	2.7
1	A	367	ASP	2.6
1	C	49	PHE	2.6
1	D	209	HIS	2.6
1	D	114	GLN	2.6
1	A	383	THR	2.6
1	D	61	ILE	2.5
1	A	212	TRP	2.5
1	A	102	GLY	2.5
1	D	383	THR	2.5

*Continued on next page...*

*Continued from previous page...*

Mol	Chain	Res	Type	RSRZ
1	C	100	ASN	2.4
1	D	83	LEU	2.4
1	A	88	PRO	2.4
1	D	125	PRO	2.4
1	C	63	ASN	2.4
1	A	231	PRO	2.4
1	C	196	GLN	2.4
1	D	100	ASN	2.3
1	D	102	GLY	2.3
1	D	121	LYS	2.3
1	D	49	PHE	2.3
1	D	85	ASN	2.3
1	B	86	ARG	2.3
1	C	71	TRP	2.3
1	B	89	ASN	2.2
1	C	163	LYS	2.2
1	A	89	ASN	2.2
1	C	304	ARG	2.2
1	B	88	PRO	2.2
1	B	167	PRO	2.2
1	D	381	ALA	2.1
1	D	162	ILE	2.1
1	D	286	ARG	2.1
1	C	101	PHE	2.1
1	D	117	ARG	2.1
1	D	155	LYS	2.1
1	D	364	CYS	2.1
1	D	34	TYR	2.1
1	D	38	ASP	2.0

## 6.2 Non-standard residues in protein, DNA, RNA chains [i](#)

There are no non-standard protein/DNA/RNA residues in this entry.

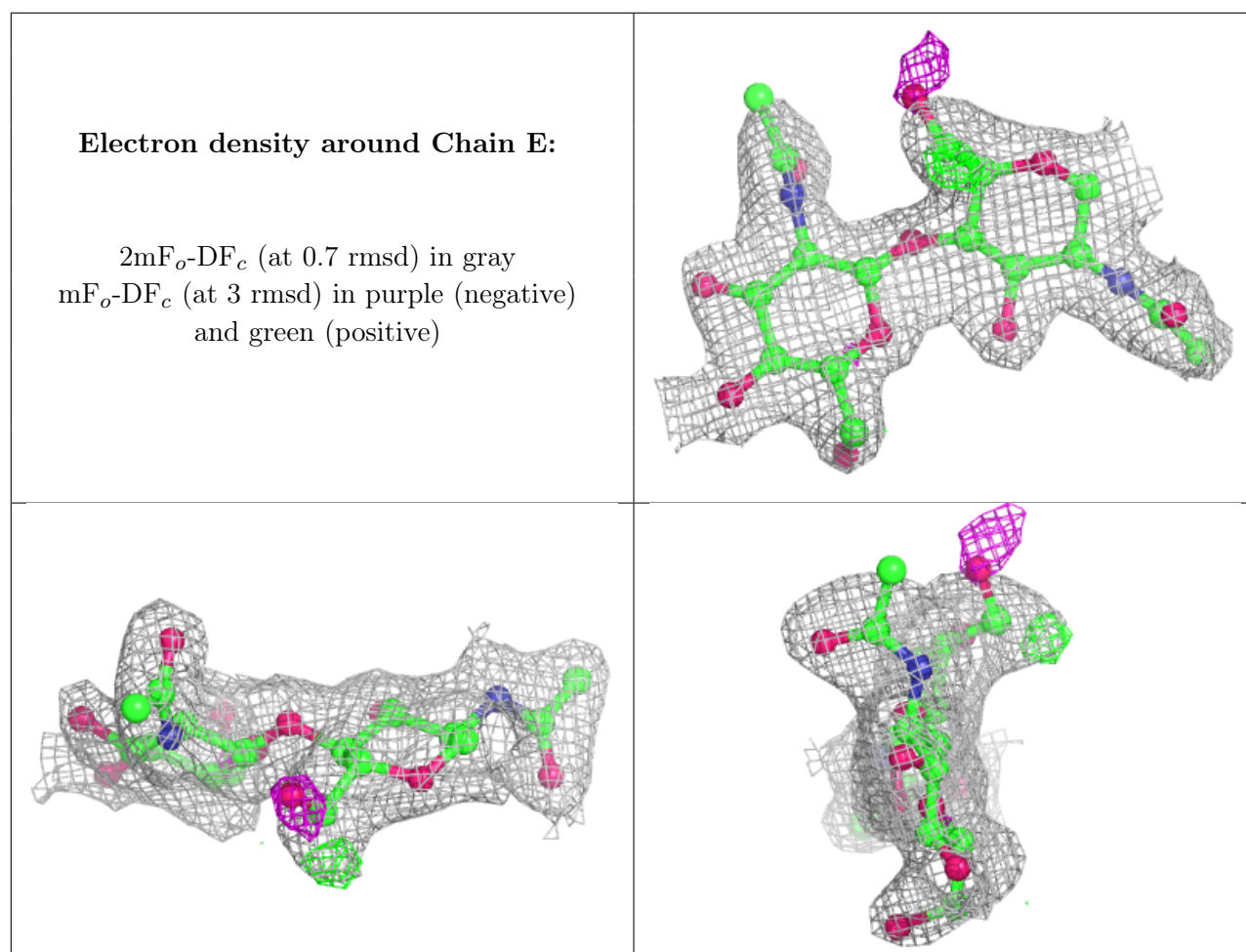
## 6.3 Carbohydrates [i](#)

In the following table, the Atoms column lists the number of modelled atoms in the group and the number defined in the chemical component dictionary. The B-factors column lists the minimum, median, 95<sup>th</sup> percentile and maximum values of B factors of atoms in the group. The column labelled 'Q< 0.9' lists the number of atoms with occupancy less than 0.9.



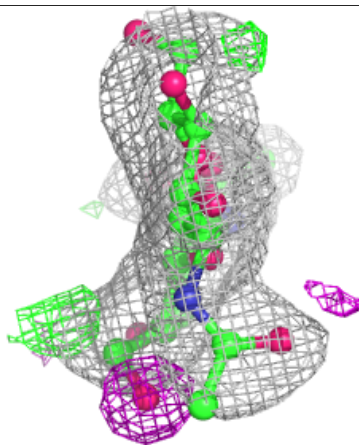
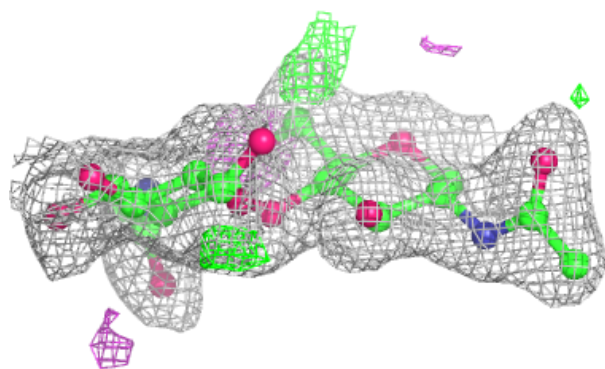
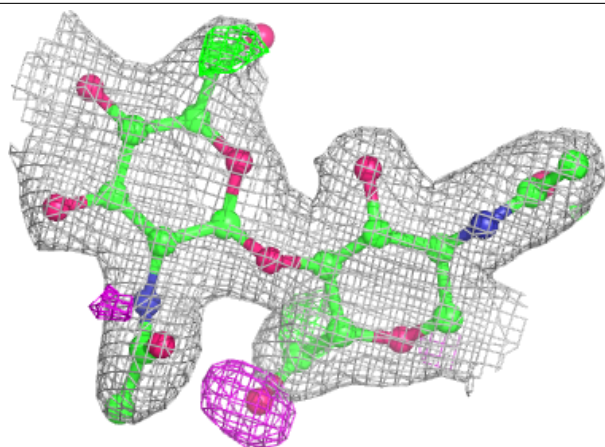
Mol	Type	Chain	Res	Atoms	RSCC	RSR	B-factors( $\text{\AA}^2$ )	Q<0.9
2	NAG	H	2	14/15	0.78	0.39	75,76,77,79	0
2	NAG	H	1	14/15	0.79	0.21	65,67,71,73	0
2	NAG	G	2	14/15	0.80	0.43	68,71,72,73	0
2	NAG	G	1	14/15	0.83	0.20	54,56,62,65	0
2	NAG	E	2	14/15	0.84	0.35	56,59,60,61	0
2	NAG	F	2	14/15	0.84	0.24	46,48,55,59	0
2	NAG	F	1	14/15	0.90	0.11	29,34,42,50	0
2	NAG	E	1	14/15	0.90	0.13	36,44,52,53	0

The following is a graphical depiction of the model fit to experimental electron density for oligosaccharide. Each fit is shown from different orientation to approximate a three-dimensional view.



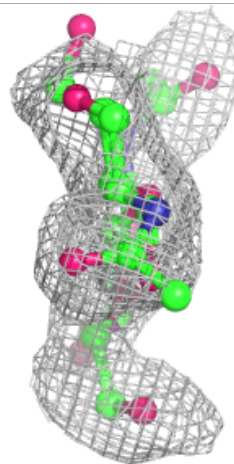
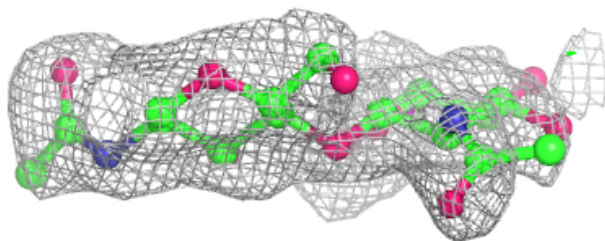
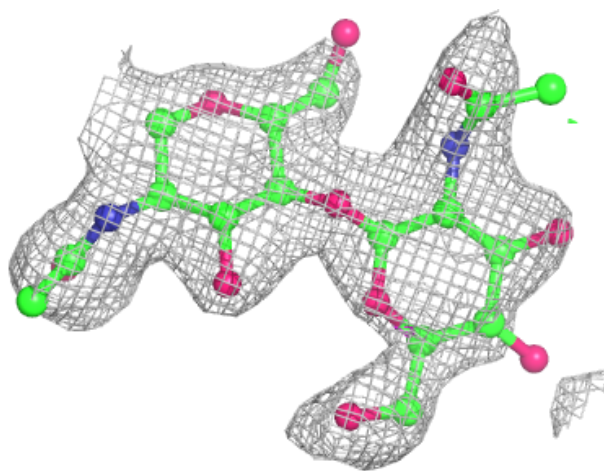
**Electron density around Chain F:**

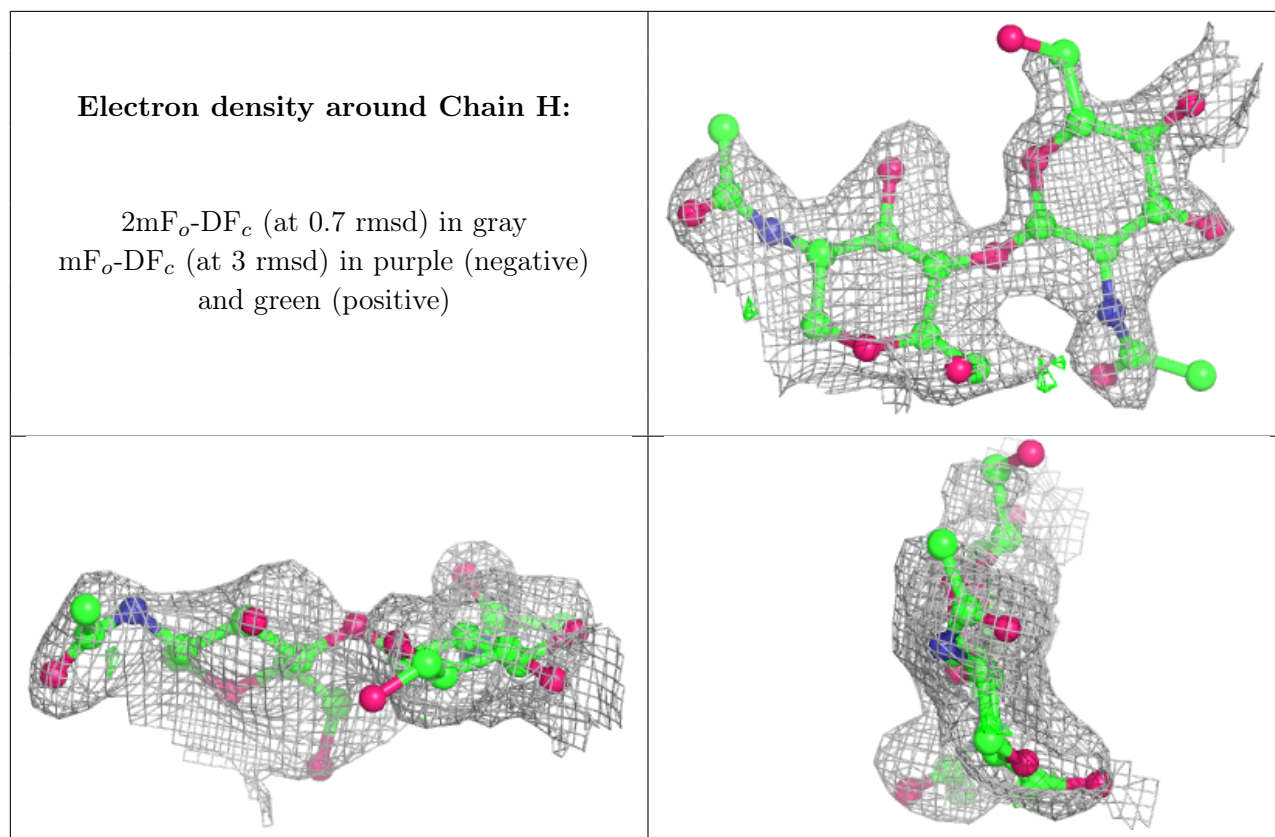
$2mF_o-DF_c$  (at 0.7 rmsd) in gray  
 $mF_o-DF_c$  (at 3 rmsd) in purple (negative)  
and green (positive)



**Electron density around Chain G:**

$2mF_o-DF_c$  (at 0.7 rmsd) in gray  
 $mF_o-DF_c$  (at 3 rmsd) in purple (negative)  
and green (positive)





## 6.4 Ligands [i](#)

In the following table, the Atoms column lists the number of modelled atoms in the group and the number defined in the chemical component dictionary. The B-factors column lists the minimum, median, 95<sup>th</sup> percentile and maximum values of B factors of atoms in the group. The column labelled 'Q< 0.9' lists the number of atoms with occupancy less than 0.9.

Mol	Type	Chain	Res	Atoms	RSCC	RSR	B-factors( $\text{\AA}^2$ )	Q<0.9
4	GOL	B	1390	6/6	0.65	0.31	67,69,69,71	0
4	GOL	C	1392	6/6	0.71	0.38	70,70,71,71	0
4	GOL	C	1389	6/6	0.72	0.55	38,55,60,66	0
4	GOL	A	1390	6/6	0.73	0.35	59,63,65,65	0
4	GOL	D	1387	6/6	0.75	0.34	61,62,63,66	0
4	GOL	D	1386	6/6	0.77	0.21	50,51,51,54	0
4	GOL	B	1389	6/6	0.80	0.16	54,55,55,56	0
4	GOL	A	1387	6/6	0.80	0.24	62,64,64,65	0
4	GOL	C	1390	6/6	0.82	0.29	60,62,62,62	0
4	GOL	A	1388	6/6	0.82	0.37	52,54,56,61	0
4	GOL	C	1388	6/6	0.84	0.18	39,49,52,56	0
4	GOL	A	1389	6/6	0.84	0.21	35,41,42,46	0
4	GOL	C	1391	6/6	0.85	0.20	64,65,65,66	0
4	GOL	A	1386	6/6	0.86	0.20	23,41,43,46	0

*Continued on next page...*

*Continued from previous page...*

Mol	Type	Chain	Res	Atoms	RSCC	RSR	B-factors( $\text{\AA}^2$ )	Q<0.9
3	SO4	B	1386	5/5	0.88	0.15	48,51,52,53	0
4	GOL	D	1385	6/6	0.89	0.23	36,45,46,46	0
4	GOL	A	1391	6/6	0.89	0.23	35,42,45,46	0
3	SO4	B	1387	5/5	0.89	0.21	75,75,76,76	0
3	SO4	A	1385	5/5	0.91	0.17	70,71,72,73	0
3	SO4	B	1385	5/5	0.91	0.19	63,64,65,65	0
3	SO4	C	1387	5/5	0.95	0.32	76,77,77,78	0
3	SO4	C	1385	5/5	0.96	0.09	55,57,58,58	0
3	SO4	C	1386	5/5	0.97	0.10	53,53,54,56	0
3	SO4	B	1388	5/5	0.97	0.11	48,48,50,50	0

## 6.5 Other polymers [i](#)

There are no such residues in this entry.