



Full wwPDB X-ray Structure Validation Report ⓘ

Oct 24, 2024 – 10:17 AM EDT

PDB ID : 7HKN
Title : Group deposition for crystallographic fragment screening of the NS5 RNA-dependent RNA polymerase from Dengue virus serotype 2 – Crystal structure of the NS5 RNA-dependent RNA polymerase from Dengue virus serotype 2 in complex with Z952016136 (DNV2_NS5A-x0323)
Authors : Saini, M.; Chopra, A.; Aschenbrenner, J.C.; Marples, P.G.; Balcomb, B.H.; Fearon, D.; von Delft, F.; Ruiz, F.X.; Arnold, E.
Deposited on : 2024-10-15
Resolution : 2.43 Å(reported)

This is a Full wwPDB X-ray Structure Validation Report for a publicly released PDB entry.

We welcome your comments at validation@mail.wwpdb.org

A user guide is available at

<https://www.wwpdb.org/validation/2017/XrayValidationReportHelp>

with specific help available everywhere you see the ⓘ symbol.

The types of validation reports are described at

<http://www.wwpdb.org/validation/2017/FAQs#types>.

The following versions of software and data (see [references ⓘ](#)) were used in the production of this report:

MolProbity : 4.02b-467
Mogul : 2022.3.0, CSD as543be (2022)
Xtriage (Phenix) : 1.20.1
EDS : 3.0
buster-report : 1.1.7 (2018)
Percentile statistics : 20231227.v01 (using entries in the PDB archive December 27th 2023)
CCP4 : 9.0.003 (Gargrove)
Density-Fitness : 1.0.11
Ideal geometry (proteins) : Engh & Huber (2001)

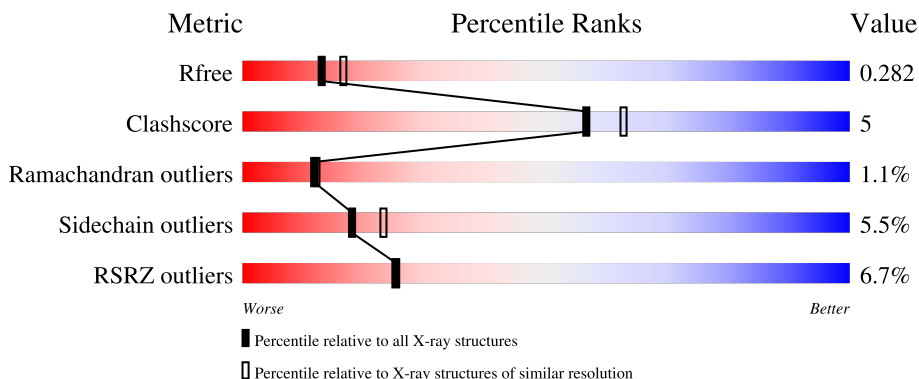
1 Overall quality at a glance

The following experimental techniques were used to determine the structure:

X-RAY DIFFRACTION

The reported resolution of this entry is 2.43 Å.

Percentile scores (ranging between 0-100) for global validation metrics of the entry are shown in the following graphic. The table shows the number of entries on which the scores are based.



Metric	Whole archive (#Entries)	Similar resolution (#Entries, resolution range(Å))
R_{free}	164625	2124 (2.46-2.42)
Clashscore	180529	2259 (2.46-2.42)
Ramachandran outliers	177936	2244 (2.46-2.42)
Sidechain outliers	177891	2244 (2.46-2.42)
RSRZ outliers	164620	2124 (2.46-2.42)

The table below summarises the geometric issues observed across the polymeric chains and their fit to the electron density. The red, orange, yellow and green segments of the lower bar indicate the fraction of residues that contain outliers for ≥ 3 , 2, 1 and 0 types of geometric quality criteria respectively. A grey segment represents the fraction of residues that are not modelled. The numeric value for each fraction is indicated below the corresponding segment, with a dot representing fractions $\leq 5\%$. The upper red bar (where present) indicates the fraction of residues that have poor fit to the electron density. The numeric value is given above the bar.

Mol	Chain	Length	Quality of chain
1	A	637	

The following table lists non-polymeric compounds, carbohydrate monomers and non-standard residues in protein, DNA, RNA chains that are outliers for geometric or electron-density-fit criteria:

Ideal geometry (DNA, RNA) : Parkinson et al. (1996)
Validation Pipeline (wwPDB-VP) : 2.39

Mol	Type	Chain	Res	Chirality	Geometry	Clashes	Electron density
5	PEG	A	1009	-	-	-	X
6	PO4	A	1008	-	-	X	-

2 Entry composition i

There are 8 unique types of molecules in this entry. The entry contains 5353 atoms, of which 0 are hydrogens and 0 are deuteriums.

In the tables below, the ZeroOcc column contains the number of atoms modelled with zero occupancy, the AltConf column contains the number of residues with at least one atom in alternate conformation and the Trace column contains the number of residues modelled with at most 2 atoms.

- Molecule 1 is a protein called Genome polyprotein.

Mol	Chain	Residues	Atoms					ZeroOcc	AltConf	Trace
			Total	C	N	O	S			
1	A	582	4822	3036	865	887	34	0	8	0

There are 2 discrepancies between the modelled and reference sequences:

Chain	Residue	Modelled	Actual	Comment	Reference
A	264	GLY	-	expression tag	UNP Q91H74
A	265	PRO	-	expression tag	UNP Q91H74

- Molecule 2 is ZINC ION (three-letter code: ZN) (formula: Zn).

Mol	Chain	Residues	Atoms		ZeroOcc	AltConf
			Total	Zn		
2	A	2	2	2	0	0

- Molecule 3 is 2-(N-MORPHOLINO)-ETHANESULFONIC ACID (three-letter code: MES) (formula: C₆H₁₃NO₄S).



Mol	Chain	Residues	Atoms					ZeroOcc	AltConf
			Total	C	N	O	S		
3	A	1	24	12	2	8	2	0	1

- Molecule 4 is DIMETHYL SULFOXIDE (three-letter code: DMS) (formula: C₂H₆OS).



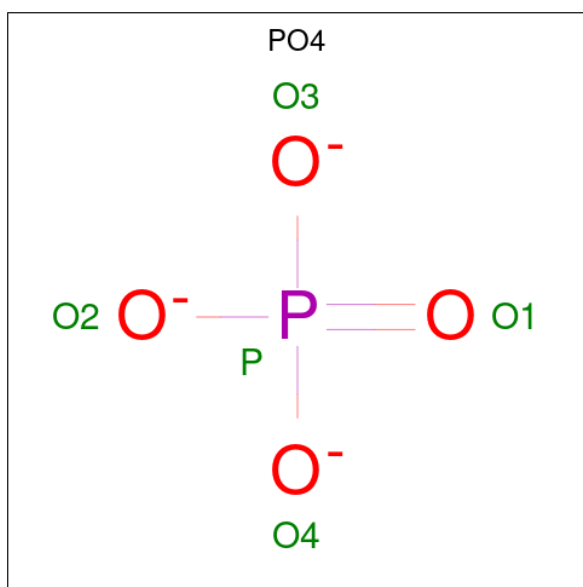
Mol	Chain	Residues	Atoms				ZeroOcc	AltConf
			Total	C	O	S		
4	A	1	4	2	1	1	0	0
4	A	1	4	2	1	1	0	0
4	A	1	4	2	1	1	0	0

- Molecule 5 is DI(HYDROXYETHYL)ETHER (three-letter code: PEG) (formula: C₄H₁₀O₃).



Mol	Chain	Residues	Atoms			ZeroOcc	AltConf
5	A	1	Total	C	O	0	0
			7	4	3		
5	A	1	Total	C	O	0	0
			7	4	3		
5	A	1	Total	C	O	0	0
			7	4	3		

- Molecule 6 is PHOSPHATE ION (three-letter code: PO4) (formula: O₄P).



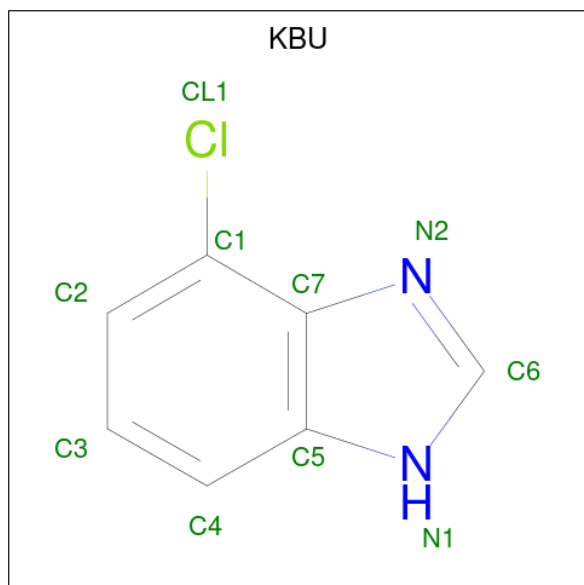
Mol	Chain	Residues	Atoms			ZeroOcc	AltConf
6	A	1	Total	O	P	0	0
			5	4	1		

Continued on next page...

Continued from previous page...

Mol	Chain	Residues	Atoms			ZeroOcc	AltConf
			Total	O	P		
6	A	1	5	4	1	0	0

- Molecule 7 is 4-chloro-1H-benzimidazole (three-letter code: KBU) (formula: C₇H₅ClN₂) (labeled as "Ligand of Interest" by depositor).



Mol	Chain	Residues	Atoms				ZeroOcc	AltConf
			Total	C	Cl	N		
7	A	1	10	7	1	2	0	0

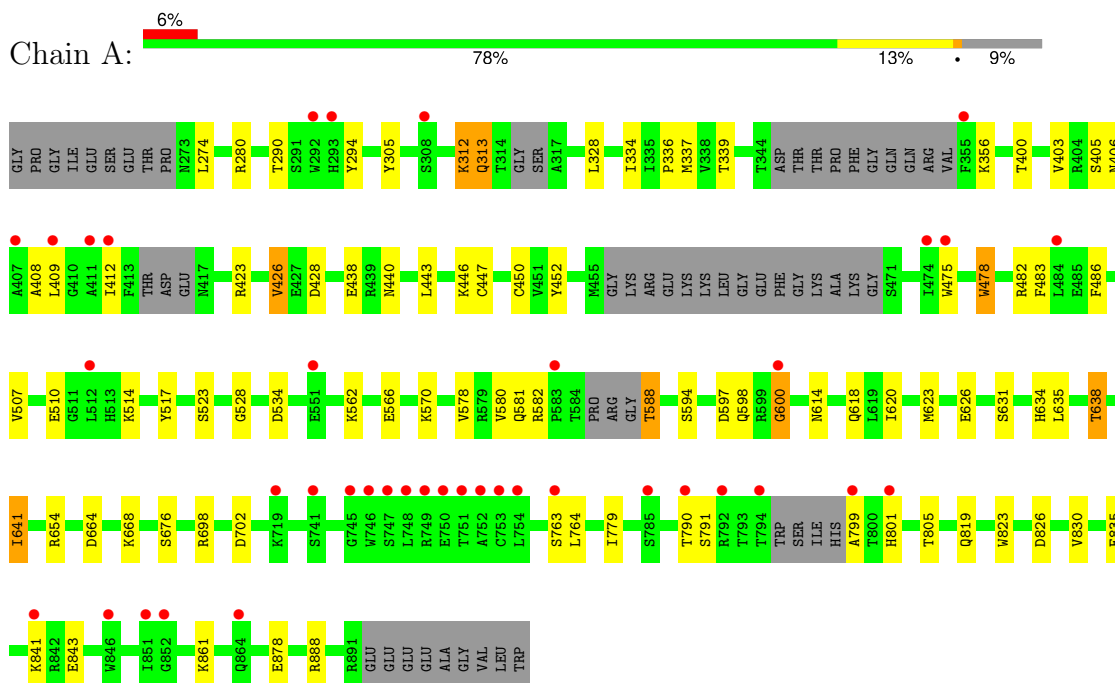
- Molecule 8 is water.

Mol	Chain	Residues	Atoms		ZeroOcc	AltConf
			Total	O		
8	A	452	452	452	0	0

3 Residue-property plots [i](#)

These plots are drawn for all protein, RNA, DNA and oligosaccharide chains in the entry. The first graphic for a chain summarises the proportions of the various outlier classes displayed in the second graphic. The second graphic shows the sequence view annotated by issues in geometry and electron density. Residues are color-coded according to the number of geometric quality criteria for which they contain at least one outlier: green = 0, yellow = 1, orange = 2 and red = 3 or more. A red dot above a residue indicates a poor fit to the electron density ($RSRZ > 2$). Stretches of 2 or more consecutive residues without any outlier are shown as a green connector. Residues present in the sample, but not in the model, are shown in grey.

- Molecule 1: Genome polyprotein



4 Data and refinement statistics

Property	Value	Source
Space group	I 2 2 2	Depositor
Cell constants a, b, c, α , β , γ	82.53Å 117.36Å 148.89Å 90.00° 90.00° 90.00°	Depositor
Resolution (Å)	46.13 – 2.43 46.13 – 2.43	Depositor EDS
% Data completeness (in resolution range)	99.6 (46.13-2.43) 99.7 (46.13-2.43)	Depositor EDS
R_{merge}	0.38	Depositor
R_{sym}	(Not available)	Depositor
$\langle I/\sigma(I) \rangle$ ¹	1.13 (at 2.42Å)	Xtrriage
Refinement program	REFMAC 5.8.0267, REFMAC5	Depositor
R, R_{free}	0.199 , 0.281 0.219 , 0.282	Depositor DCC
R_{free} test set	1408 reflections (5.12%)	wwPDB-VP
Wilson B-factor (Å ²)	48.2	Xtrriage
Anisotropy	0.172	Xtrriage
Bulk solvent k_{sol} (e/Å ³), B_{sol} (Å ²)	0.36 , 85.8	EDS
L-test for twinning ²	$\langle L \rangle = 0.50$, $\langle L^2 \rangle = 0.33$	Xtrriage
Estimated twinning fraction	No twinning to report.	Xtrriage
F_o, F_c correlation	0.93	EDS
Total number of atoms	5353	wwPDB-VP
Average B, all atoms (Å ²)	71.0	wwPDB-VP

Xtrriage's analysis on translational NCS is as follows: *The largest off-origin peak in the Patterson function is 5.01% of the height of the origin peak. No significant pseudotranslation is detected.*

¹Intensities estimated from amplitudes.

²Theoretical values of $\langle |L| \rangle$, $\langle L^2 \rangle$ for acentric reflections are 0.5, 0.333 respectively for untwinned datasets, and 0.375, 0.2 for perfectly twinned datasets.

5 Model quality [i](#)

5.1 Standard geometry [i](#)

Bond lengths and bond angles in the following residue types are not validated in this section: MES, PEG, KBU, ZN, PO4, DMS

The Z score for a bond length (or angle) is the number of standard deviations the observed value is removed from the expected value. A bond length (or angle) with $|Z| > 5$ is considered an outlier worth inspection. RMSZ is the root-mean-square of all Z scores of the bond lengths (or angles).

Mol	Chain	Bond lengths		Bond angles	
		RMSZ	# Z >5	RMSZ	# Z >5
1	A	0.69	0/4929	0.82	0/6645

There are no bond length outliers.

There are no bond angle outliers.

There are no chirality outliers.

There are no planarity outliers.

5.2 Too-close contacts [i](#)

In the following table, the Non-H and H(model) columns list the number of non-hydrogen atoms and hydrogen atoms in the chain respectively. The H(added) column lists the number of hydrogen atoms added and optimized by MolProbity. The Clashes column lists the number of clashes within the asymmetric unit, whereas Symm-Clashes lists symmetry-related clashes.

Mol	Chain	Non-H	H(model)	H(added)	Clashes	Symm-Clashes
1	A	4822	0	4720	42	0
2	A	2	0	0	0	0
3	A	24	0	26	0	0
4	A	12	0	18	1	0
5	A	21	0	30	1	0
6	A	10	0	0	3	0
7	A	10	0	0	0	0
8	A	452	0	0	13	0
All	All	5353	0	4794	44	0

The all-atom clashscore is defined as the number of clashes found per 1000 atoms (including hydrogen atoms). The all-atom clashscore for this structure is 5.

All (44) close contacts within the same asymmetric unit are listed below, sorted by their clash

magnitude.

Atom-1	Atom-2	Interatomic distance (Å)	Clash overlap (Å)
5:A:1009:PEG:H21	8:A:1405:HOH:O	1.87	0.74
4:A:1004:DMS:H11	8:A:1344:HOH:O	1.87	0.73
1:A:664:ASP:OD1	6:A:1008:PO4:P	2.49	0.71
1:A:790:THR:HG21	8:A:1471:HOH:O	1.99	0.63
1:A:534:ASP:OD1	6:A:1008:PO4:O4	2.17	0.62
1:A:447:CYS:SG	1:A:450:CYS:HB2	2.44	0.58
1:A:664:ASP:OD1	6:A:1008:PO4:O4	2.22	0.58
1:A:801[B]:HIS:H	1:A:801[B]:HIS:CD2	2.25	0.54
1:A:440:ASN:HA	1:A:443:LEU:HD12	1.90	0.53
1:A:638:THR:O	1:A:641:ILE:HG22	2.09	0.53
1:A:826:ASP:OD1	1:A:826:ASP:C	2.46	0.52
1:A:528:GLY:O	1:A:668:LYS:HE3	2.10	0.52
1:A:819:GLN:HG2	8:A:1312:HOH:O	2.09	0.52
1:A:475:TRP:CE3	1:A:600:GLY:HA3	2.45	0.51
1:A:562:LYS:O	1:A:566:GLU:HG3	2.12	0.50
1:A:570:LYS:HG3	8:A:1160:HOH:O	2.12	0.49
1:A:507:VAL:O	1:A:510:GLU:HB2	2.12	0.49
1:A:334:ILE:O	1:A:336:PRO:HD3	2.14	0.48
1:A:483:PHE:O	1:A:486:PHE:HB3	2.15	0.47
1:A:409:LEU:HD22	8:A:1541:HOH:O	2.15	0.46
1:A:614:ASN:O	1:A:618:GLN:HG2	2.15	0.46
1:A:312:LYS:O	1:A:313:GLN:CG	2.64	0.46
1:A:830:VAL:HG13	1:A:835:GLU:HB2	1.98	0.45
1:A:888:ARG:NH1	8:A:1106:HOH:O	2.39	0.45
1:A:582:ARG:O	1:A:588:THR:HA	2.17	0.45
1:A:620:ILE:O	1:A:623:MET:HB2	2.16	0.45
1:A:312:LYS:O	1:A:313:GLN:HG3	2.17	0.44
1:A:336:PRO:HA	1:A:339:THR:OG1	2.18	0.43
1:A:510:GLU:O	1:A:514:LYS:HG3	2.18	0.43
1:A:400:THR:HG23	1:A:426:VAL:HG11	2.00	0.43
1:A:452:TYR:O	1:A:578:VAL:HA	2.16	0.43
1:A:843:GLU:OE2	8:A:1101:HOH:O	2.20	0.43
1:A:294:TYR:CZ	1:A:305:TYR:HD2	2.37	0.43
1:A:626:GLU:OE2	1:A:654:ARG:NE	2.52	0.43
1:A:517:TYR:HB3	1:A:823:TRP:CE2	2.54	0.42
1:A:799:ALA:HA	8:A:1289:HOH:O	2.19	0.42
1:A:400:THR:O	1:A:403:VAL:HG22	2.20	0.42
1:A:702:ASP:HA	8:A:1250:HOH:O	2.20	0.42
1:A:412:ILE:HG12	1:A:478:TRP:HA	2.02	0.42
1:A:337:MET:HG2	8:A:1285:HOH:O	2.20	0.41
1:A:698:ARG:HB2	8:A:1415:HOH:O	2.19	0.41

Continued on next page...

Continued from previous page...

Atom-1	Atom-2	Interatomic distance (Å)	Clash overlap (Å)
1:A:280:ARG:NH1	8:A:1133:HOH:O	2.54	0.41
1:A:328:LEU:HD13	1:A:779:ILE:HA	2.03	0.41
1:A:597:ASP:O	1:A:598:GLN:HB2	2.21	0.41

There are no symmetry-related clashes.

5.3 Torsion angles [i](#)

5.3.1 Protein backbone [i](#)

In the following table, the Percentiles column shows the percent Ramachandran outliers of the chain as a percentile score with respect to all X-ray entries followed by that with respect to entries of similar resolution.

The Analysed column shows the number of residues for which the backbone conformation was analysed, and the total number of residues.

Mol	Chain	Analysed	Favoured	Allowed	Outliers	Percentiles
1	A	576/637 (90%)	516 (90%)	54 (9%)	6 (1%)	13 13

All (6) Ramachandran outliers are listed below:

Mol	Chain	Res	Type
1	A	406	ASN
1	A	405	SER
1	A	408	ALA
1	A	313	GLN
1	A	312	LYS
1	A	600	GLY

5.3.2 Protein sidechains [i](#)

In the following table, the Percentiles column shows the percent sidechain outliers of the chain as a percentile score with respect to all X-ray entries followed by that with respect to entries of similar resolution.

The Analysed column shows the number of residues for which the sidechain conformation was analysed, and the total number of residues.

Mol	Chain	Analysed	Rotameric	Outliers	Percentiles
1	A	518/554 (94%)	489 (94%)	29 (6%)	17 22

All (29) residues with a non-rotameric sidechain are listed below:

Mol	Chain	Res	Type
1	A	274	LEU
1	A	290	THR
1	A	356	LYS
1	A	423	ARG
1	A	426	VAL
1	A	428	ASP
1	A	438	GLU
1	A	446	LYS
1	A	478	TRP
1	A	482	ARG
1	A	523	SER
1	A	580	VAL
1	A	581	GLN
1	A	588	THR
1	A	594	SER
1	A	631	SER
1	A	634	HIS
1	A	635	LEU
1	A	638	THR
1	A	641	ILE
1	A	676	SER
1	A	763[A]	SER
1	A	763[B]	SER
1	A	764	LEU
1	A	791	SER
1	A	805	THR
1	A	841	LYS
1	A	861	LYS
1	A	878	GLU

Sometimes sidechains can be flipped to improve hydrogen bonding and reduce clashes. All (3) such sidechains are listed below:

Mol	Chain	Res	Type
1	A	298	HIS
1	A	693	GLN
1	A	868	ASN

5.3.3 RNA [i](#)

There are no RNA molecules in this entry.

5.4 Non-standard residues in protein, DNA, RNA chains [i](#)

There are no non-standard protein/DNA/RNA residues in this entry.

5.5 Carbohydrates [i](#)

There are no oligosaccharides in this entry.

5.6 Ligand geometry [i](#)

Of 13 ligands modelled in this entry, 2 are monoatomic - leaving 11 for Mogul analysis.

In the following table, the Counts columns list the number of bonds (or angles) for which Mogul statistics could be retrieved, the number of bonds (or angles) that are observed in the model and the number of bonds (or angles) that are defined in the Chemical Component Dictionary. The Link column lists molecule types, if any, to which the group is linked. The Z score for a bond length (or angle) is the number of standard deviations the observed value is removed from the expected value. A bond length (or angle) with $|Z| > 2$ is considered an outlier worth inspection. RMSZ is the root-mean-square of all Z scores of the bond lengths (or angles).

Mol	Type	Chain	Res	Link	Bond lengths			Bond angles		
					Counts	RMSZ	# Z > 2	Counts	RMSZ	# Z > 2
7	KBU	A	1012	-	9,11,11	1.05	1 (11%)	9,15,15	0.60	0
4	DMS	A	1004	-	3,3,3	0.21	0	3,3,3	0.19	0
6	PO4	A	1008	-	4,4,4	0.69	0	6,6,6	0.58	0
6	PO4	A	1010	-	4,4,4	0.67	0	6,6,6	0.50	0
5	PEG	A	1009	-	6,6,6	0.13	0	5,5,5	0.07	0
3	MES	A	1003[A]	-	12,12,12	0.72	0	15,16,16	0.34	0
5	PEG	A	1011	-	6,6,6	0.23	0	5,5,5	0.16	0
3	MES	A	1003[B]	-	12,12,12	0.73	0	15,16,16	0.37	0
4	DMS	A	1006	-	3,3,3	0.18	0	3,3,3	0.27	0
5	PEG	A	1007	-	6,6,6	0.22	0	5,5,5	0.18	0
4	DMS	A	1005	-	3,3,3	0.29	0	3,3,3	0.07	0

In the following table, the Chirals column lists the number of chiral outliers, the number of chiral centers analysed, the number of these observed in the model and the number defined in the Chemical Component Dictionary. Similar counts are reported in the Torsion and Rings columns. '2' means no outliers of that kind were identified.

Mol	Type	Chain	Res	Link	Chirals	Torsions	Rings
7	KBU	A	1012	-	-	-	0/2/2/2
5	PEG	A	1009	-	-	3/4/4/4	-
3	MES	A	1003[A]	-	-	3/6/14/14	0/1/1/1
5	PEG	A	1011	-	-	2/4/4/4	-
3	MES	A	1003[B]	-	-	5/6/14/14	0/1/1/1
5	PEG	A	1007	-	-	2/4/4/4	-

All (1) bond length outliers are listed below:

Mol	Chain	Res	Type	Atoms	Z	Observed(Å)	Ideal(Å)
7	A	1012	KBU	C1-C7	-2.25	1.39	1.42

There are no bond angle outliers.

There are no chirality outliers.

All (15) torsion outliers are listed below:

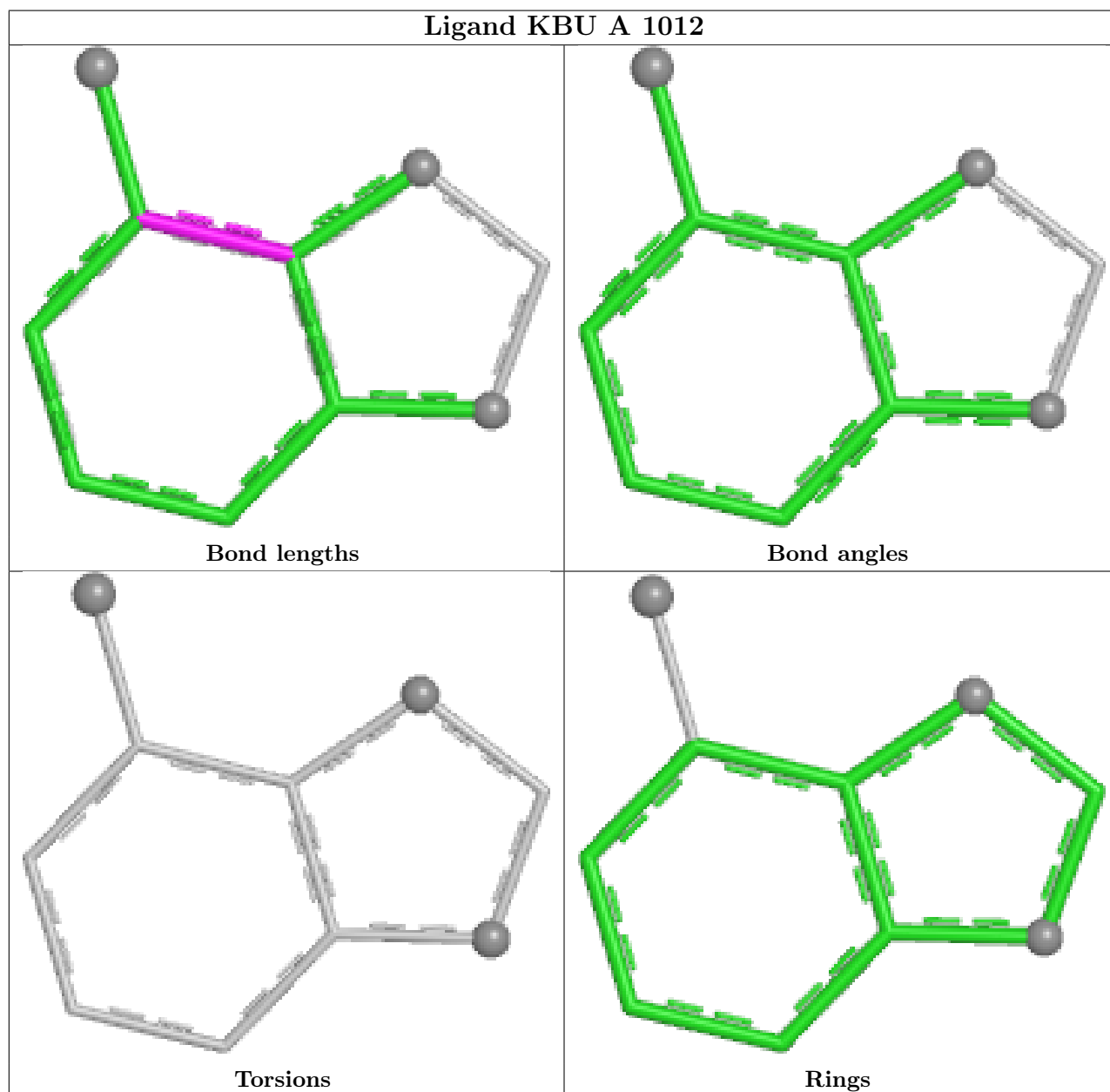
Mol	Chain	Res	Type	Atoms
3	A	1003[A]	MES	C7-C8-S-O1S
3	A	1003[A]	MES	C7-C8-S-O3S
3	A	1003[B]	MES	C8-C7-N4-C3
5	A	1009	PEG	O2-C3-C4-O4
5	A	1011	PEG	O2-C3-C4-O4
5	A	1007	PEG	O2-C3-C4-O4
3	A	1003[B]	MES	C8-C7-N4-C5
3	A	1003[B]	MES	C7-C8-S-O3S
3	A	1003[A]	MES	C7-C8-S-O2S
3	A	1003[B]	MES	C7-C8-S-O1S
3	A	1003[B]	MES	C7-C8-S-O2S
5	A	1011	PEG	C4-C3-O2-C2
5	A	1009	PEG	C4-C3-O2-C2
5	A	1009	PEG	O1-C1-C2-O2
5	A	1007	PEG	O1-C1-C2-O2

There are no ring outliers.

3 monomers are involved in 5 short contacts:

Mol	Chain	Res	Type	Clashes	Symm-Clashes
4	A	1004	DMS	1	0
6	A	1008	PO4	3	0
5	A	1009	PEG	1	0

The following is a two-dimensional graphical depiction of Mogul quality analysis of bond lengths, bond angles, torsion angles, and ring geometry for all instances of the Ligand of Interest. In addition, ligands with molecular weight > 250 and outliers as shown on the validation Tables will also be included. For torsion angles, if less than 5% of the Mogul distribution of torsion angles is within 10 degrees of the torsion angle in question, then that torsion angle is considered an outlier. Any bond that is central to one or more torsion angles identified as an outlier by Mogul will be highlighted in the graph. For rings, the root-mean-square deviation (RMSD) between the ring in question and similar rings identified by Mogul is calculated over all ring torsion angles. If the average RMSD is greater than 60 degrees and the minimal RMSD between the ring in question and any Mogul-identified rings is also greater than 60 degrees, then that ring is considered an outlier. The outliers are highlighted in purple. The color gray indicates Mogul did not find sufficient equivalents in the CSD to analyse the geometry.



5.7 Other polymers [i](#)

There are no such residues in this entry.

5.8 Polymer linkage issues [i](#)

There are no chain breaks in this entry.

6 Fit of model and data [i](#)

6.1 Protein, DNA and RNA chains [i](#)

In the following table, the column labelled ‘#RSRZ > 2’ contains the number (and percentage) of RSRZ outliers, followed by percent RSRZ outliers for the chain as percentile scores relative to all X-ray entries and entries of similar resolution. The OWAB column contains the minimum, median, 95th percentile and maximum values of the occupancy-weighted average B-factor per residue. The column labelled ‘Q < 0.9’ lists the number of (and percentage) of residues with an average occupancy less than 0.9.

Mol	Chain	Analysed	<RSRZ>	#RSRZ>2	OWAB(Å ²)	Q<0.9
1	A	582/637 (91%)	0.43	39 (6%) 25 25	10, 58, 140, 182	27 (4%)

All (39) RSRZ outliers are listed below:

Mol	Chain	Res	Type	RSRZ
1	A	801[A]	HIS	12.7
1	A	512[A]	LEU	11.4
1	A	748	LEU	11.3
1	A	746	TRP	11.2
1	A	752	ALA	10.9
1	A	747	SER	10.8
1	A	751	THR	10.7
1	A	763[A]	SER	10.1
1	A	551[A]	GLU	9.9
1	A	851	ILE	9.7
1	A	753	CYS	9.5
1	A	754	LEU	9.4
1	A	749	ARG	9.3
1	A	741[A]	SER	9.2
1	A	864[A]	GLN	8.6
1	A	852	GLY	8.4
1	A	841	LYS	8.1
1	A	750	GLU	7.8
1	A	790	THR	7.0
1	A	792	ARG	6.4
1	A	785[A]	SER	5.9
1	A	799	ALA	5.3
1	A	745	GLY	5.1
1	A	355	PHE	3.3
1	A	794	THR	2.8
1	A	846	TRP	2.7
1	A	719[A]	LYS	2.6

Continued on next page...

Continued from previous page...

Mol	Chain	Res	Type	RSRZ
1	A	600	GLY	2.5
1	A	411	ALA	2.3
1	A	292	TRP	2.3
1	A	474	ILE	2.3
1	A	407	ALA	2.3
1	A	412	ILE	2.3
1	A	475	TRP	2.2
1	A	409	LEU	2.1
1	A	308	SER	2.1
1	A	293	HIS	2.1
1	A	484	LEU	2.1
1	A	583	PRO	2.1

6.2 Non-standard residues in protein, DNA, RNA chains [i](#)

There are no non-standard protein/DNA/RNA residues in this entry.

6.3 Carbohydrates [i](#)

There are no monosaccharides in this entry.

6.4 Ligands [i](#)

In the following table, the Atoms column lists the number of modelled atoms in the group and the number defined in the chemical component dictionary. The B-factors column lists the minimum, median, 95th percentile and maximum values of B factors of atoms in the group. The column labelled 'Q< 0.9' lists the number of atoms with occupancy less than 0.9.

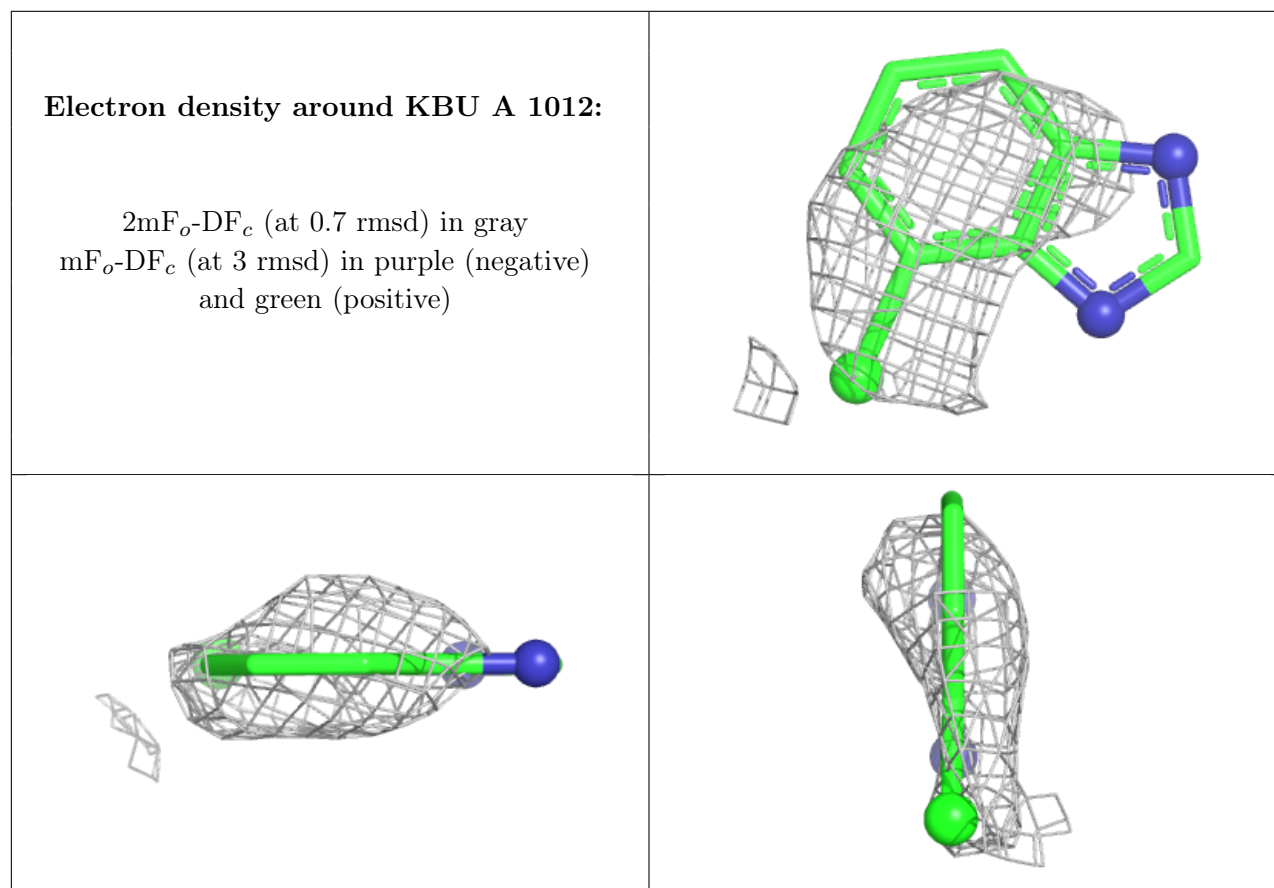
Mol	Type	Chain	Res	Atoms	RSCC	RSR	B-factors(Å ²)	Q<0.9
5	PEG	A	1007	7/7	0.60	0.21	105,129,145,145	0
5	PEG	A	1009	7/7	0.62	0.64	242,249,255,255	7
6	PO4	A	1010	5/5	0.67	0.11	115,121,131,131	0
4	DMS	A	1005	4/4	0.84	0.24	119,121,128,137	0
7	KBU	A	1012	10/10	0.85	0.17	138,140,142,142	10
5	PEG	A	1011	7/7	0.90	0.12	77,88,96,98	0
6	PO4	A	1008	5/5	0.90	0.10	74,83,100,101	0
3	MES	A	1003[B]	12/12	0.93	0.27	44,52,58,58	12
3	MES	A	1003[A]	12/12	0.93	0.27	765,791,810,812	12
4	DMS	A	1006	4/4	0.95	0.10	62,69,72,78	0
4	DMS	A	1004	4/4	0.96	0.24	75,77,82,83	0

Continued on next page...

Continued from previous page...

Mol	Type	Chain	Res	Atoms	RSCC	RSR	B-factors(\AA^2)	Q<0.9
2	ZN	A	1002	1/1	0.99	0.04	83,83,83,83	0
2	ZN	A	1001	1/1	1.00	0.04	35,35,35,35	0

The following is a graphical depiction of the model fit to experimental electron density of all instances of the Ligand of Interest. In addition, ligands with molecular weight > 250 and outliers as shown on the geometry validation Tables will also be included. Each fit is shown from different orientation to approximate a three-dimensional view.



6.5 Other polymers [i](#)

There are no such residues in this entry.