



Full wwPDB X-ray Structure Validation Report ⓘ

Oct 24, 2024 – 11:00 AM EDT

PDB ID : 7HKU
Title : Group deposition for crystallographic fragment screening of the NS5 RNA-dependent RNA polymerase from Dengue virus serotype 2 – Crystal structure of the NS5 RNA-dependent RNA polymerase from Dengue virus serotype 2 in complex with Z291279160 (DENV2_NS5A-x0741)
Authors : Saini, M.; Chopra, A.; Aschenbrenner, J.C.; Marples, P.G.; Balcomb, B.H.; Fearon, D.; von Delft, F.; Ruiz, F.X.; Arnold, E.
Deposited on : 2024-10-15
Resolution : 1.74 Å(reported)

This is a Full wwPDB X-ray Structure Validation Report for a publicly released PDB entry.

We welcome your comments at validation@mail.wwpdb.org

A user guide is available at

<https://www.wwpdb.org/validation/2017/XrayValidationReportHelp>

with specific help available everywhere you see the ⓘ symbol.

The types of validation reports are described at

<http://www.wwpdb.org/validation/2017/FAQs#types>.

The following versions of software and data (see [references ⓘ](#)) were used in the production of this report:

MolProbity : 4.02b-467
Mogul : 2022.3.0, CSD as543be (2022)
Xtriage (Phenix) : 1.20.1
EDS : 3.0
buster-report : 1.1.7 (2018)
Percentile statistics : 20231227.v01 (using entries in the PDB archive December 27th 2023)
CCP4 : 9.0.003 (Gargrove)
Density-Fitness : 1.0.11
Ideal geometry (proteins) : Engh & Huber (2001)

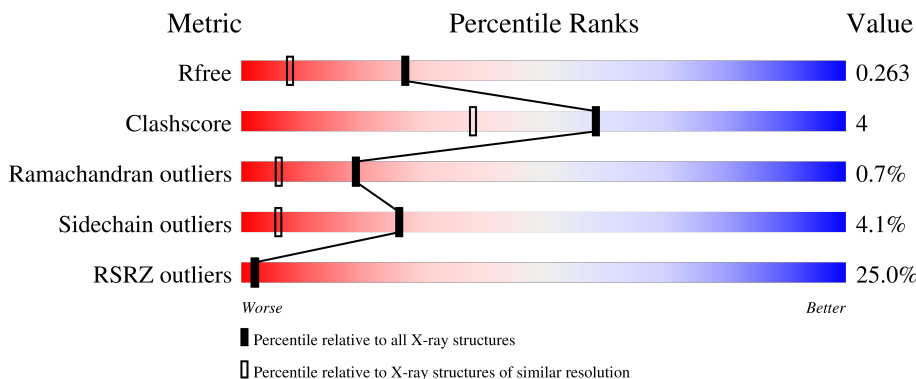
1 Overall quality at a glance

The following experimental techniques were used to determine the structure:

X-RAY DIFFRACTION

The reported resolution of this entry is 1.74 Å.

Percentile scores (ranging between 0-100) for global validation metrics of the entry are shown in the following graphic. The table shows the number of entries on which the scores are based.



Metric	Whole archive (#Entries)	Similar resolution (#Entries, resolution range(Å))
R_{free}	164625	1043 (1.74-1.74)
Clashscore	180529	1119 (1.74-1.74)
Ramachandran outliers	177936	1112 (1.74-1.74)
Sidechain outliers	177891	1112 (1.74-1.74)
RSRZ outliers	164620	1043 (1.74-1.74)

The table below summarises the geometric issues observed across the polymeric chains and their fit to the electron density. The red, orange, yellow and green segments of the lower bar indicate the fraction of residues that contain outliers for ≥ 3 , 2, 1 and 0 types of geometric quality criteria respectively. A grey segment represents the fraction of residues that are not modelled. The numeric value for each fraction is indicated below the corresponding segment, with a dot representing fractions $\leq 5\%$.

Mol	Chain	Length	Quality of chain
1	A	637	

The following table lists non-polymeric compounds, carbohydrate monomers and non-standard residues in protein, DNA, RNA chains that are outliers for geometric or electron-density-fit criteria:

Ideal geometry (DNA, RNA) : Parkinson et al. (1996)
 Validation Pipeline (wwPDB-VP) : 2.39

Mol	Type	Chain	Res	Chirality	Geometry	Clashes	Electron density
6	PO4	A	1008	-	X	X	-

2 Entry composition [i](#)

There are 9 unique types of molecules in this entry. The entry contains 5292 atoms, of which 0 are hydrogens and 0 are deuteriums.

In the tables below, the ZeroOcc column contains the number of atoms modelled with zero occupancy, the AltConf column contains the number of residues with at least one atom in alternate conformation and the Trace column contains the number of residues modelled with at most 2 atoms.

- Molecule 1 is a protein called Genome polyprotein.

Mol	Chain	Residues	Atoms					ZeroOcc	AltConf	Trace
			Total	C	N	O	S			
1	A	576	4781	3007	859	881	34	0	8	0

There are 2 discrepancies between the modelled and reference sequences:

Chain	Residue	Modelled	Actual	Comment	Reference
A	264	GLY	-	expression tag	UNP Q91H74
A	265	PRO	-	expression tag	UNP Q91H74

- Molecule 2 is ZINC ION (three-letter code: ZN) (formula: Zn).

Mol	Chain	Residues	Atoms		ZeroOcc	AltConf
2	A	2	Total	Zn	0	0
			2	2		

- Molecule 3 is 2-(N-MORPHOLINO)-ETHANESULFONIC ACID (three-letter code: MES) (formula: C₆H₁₃NO₄S).

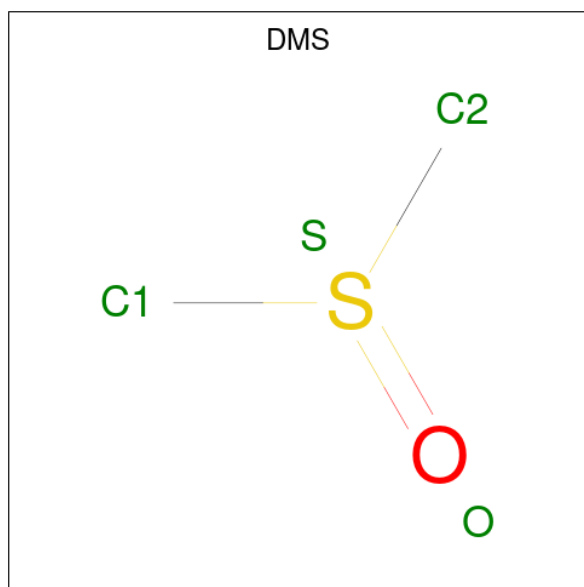


Mol	Chain	Residues	Atoms					ZeroOcc	AltConf
			Total	C	N	O	S		
3	A	1	24	12	2	8	2	0	1

- Molecule 4 is CHLORIDE ION (three-letter code: CL) (formula: Cl).

Mol	Chain	Residues	Atoms		ZeroOcc	AltConf
			Total	Cl		
4	A	1	1	1	0	0

- Molecule 5 is DIMETHYL SULFOXIDE (three-letter code: DMS) (formula: C₂H₆OS).



Mol	Chain	Residues	Atoms				ZeroOcc	AltConf
			Total	C	O	S		
5	A	1	4	2	1	1	0	0
5	A	1	4	2	1	1	0	0
5	A	1	4	2	1	1	0	0

- Molecule 6 is PHOSPHATE ION (three-letter code: PO4) (formula: O₄P).



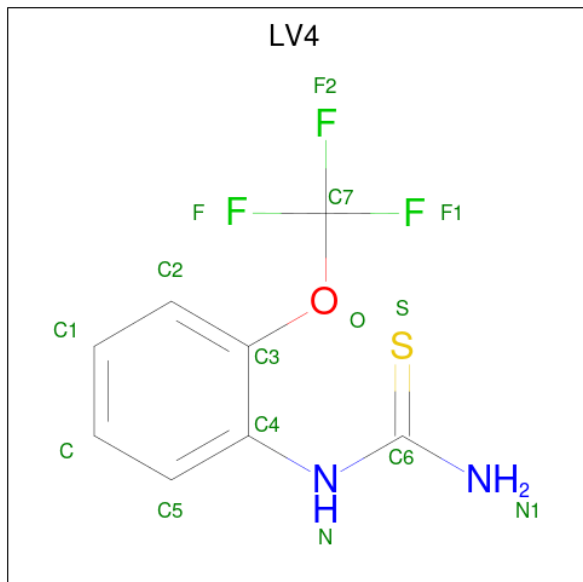
Mol	Chain	Residues	Atoms	ZeroOcc	AltConf
6	A	1	Total O P 5 4 1	0	0
6	A	1	Total O P 5 4 1	0	0

- Molecule 7 is DI(HYDROXYETHYL)ETHER (three-letter code: PEG) (formula: C₄H₁₀O₃).



Mol	Chain	Residues	Atoms	ZeroOcc	AltConf
7	A	1	Total C O 7 4 3	0	0
7	A	1	Total C O 7 4 3	0	0

- Molecule 8 is 1-[2-(trifluoromethoxy)phenyl]thiourea (three-letter code: LV4) (formula: $C_8H_7F_3N_2OS$) (labeled as "Ligand of Interest" by depositor).



Mol	Chain	Residues	Atoms					ZeroOcc	AltConf	
			Total	C	F	N	O			S
8	A	1	15	8	3	2	1	1	0	0

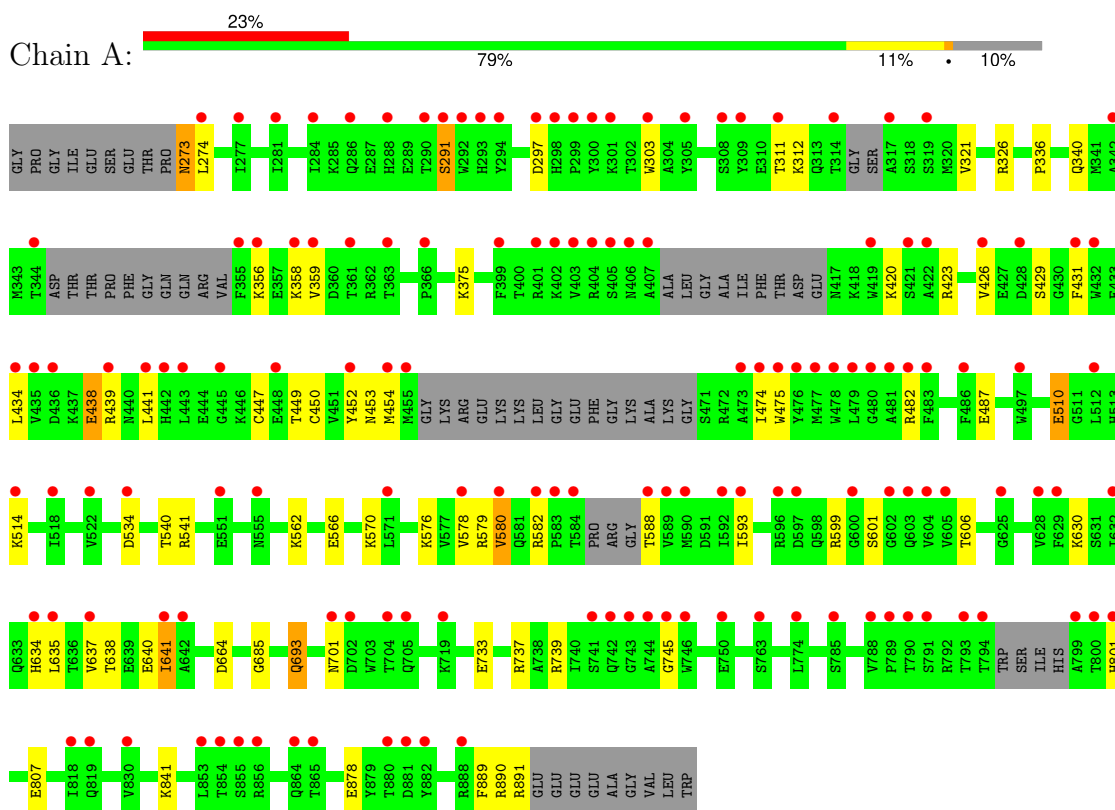
- Molecule 9 is water.

Mol	Chain	Residues	Atoms		ZeroOcc	AltConf
9	A	433	Total	O	0	0
			433	433		

3 Residue-property plots [i](#)

These plots are drawn for all protein, RNA, DNA and oligosaccharide chains in the entry. The first graphic for a chain summarises the proportions of the various outlier classes displayed in the second graphic. The second graphic shows the sequence view annotated by issues in geometry. Residues are color-coded according to the number of geometric quality criteria for which they contain at least one outlier: green = 0, yellow = 1, orange = 2 and red = 3 or more. Stretches of 2 or more consecutive residues without any outlier are shown as a green connector. Residues present in the sample, but not in the model, are shown in grey.

- Molecule 1: Genome polyprotein



4 Data and refinement statistics

Property	Value	Source
Space group	I 2 2 2	Depositor
Cell constants a, b, c, α , β , γ	82.38Å 115.69Å 147.25Å 90.00° 90.00° 90.00°	Depositor
Resolution (Å)	73.74 – 1.74 73.74 – 1.74	Depositor EDS
% Data completeness (in resolution range)	92.3 (73.74-1.74) 92.3 (73.74-1.74)	Depositor EDS
R_{merge}	0.14	Depositor
R_{sym}	(Not available)	Depositor
$\langle I/\sigma(I) \rangle$ ¹	0.95 (at 1.74Å)	Xtrriage
Refinement program	REFMAC 5.8.0267, REFMAC5	Depositor
R, R_{free}	0.200 , 0.244 0.233 , 0.263	Depositor DCC
R_{free} test set	3710 reflections (5.16%)	wwPDB-VP
Wilson B-factor (Å ²)	31.7	Xtrriage
Anisotropy	0.458	Xtrriage
Bulk solvent k_{sol} (e/Å ³), B_{sol} (Å ²)	0.36 , 72.8	EDS
L-test for twinning ²	$\langle L \rangle = 0.50$, $\langle L^2 \rangle = 0.33$	Xtrriage
Estimated twinning fraction	No twinning to report.	Xtrriage
F_o, F_c correlation	0.93	EDS
Total number of atoms	5292	wwPDB-VP
Average B, all atoms (Å ²)	59.0	wwPDB-VP

Xtrriage's analysis on translational NCS is as follows: *The largest off-origin peak in the Patterson function is 5.93% of the height of the origin peak. No significant pseudotranslation is detected.*

¹Intensities estimated from amplitudes.

²Theoretical values of $\langle |L| \rangle$, $\langle L^2 \rangle$ for acentric reflections are 0.5, 0.333 respectively for untwinned datasets, and 0.375, 0.2 for perfectly twinned datasets.

5 Model quality [i](#)

5.1 Standard geometry [i](#)

Bond lengths and bond angles in the following residue types are not validated in this section: MES, PEG, PO4, ZN, DMS, LV4, CL

The Z score for a bond length (or angle) is the number of standard deviations the observed value is removed from the expected value. A bond length (or angle) with $|Z| > 5$ is considered an outlier worth inspection. RMSZ is the root-mean-square of all Z scores of the bond lengths (or angles).

Mol	Chain	Bond lengths		Bond angles	
		RMSZ	# $ Z > 5$	RMSZ	# $ Z > 5$
1	A	0.76	1/4887 (0.0%)	0.87	1/6588 (0.0%)

Chiral center outliers are detected by calculating the chiral volume of a chiral center and verifying if the center is modelled as a planar moiety or with the opposite hand. A planarity outlier is detected by checking planarity of atoms in a peptide group, atoms in a mainchain group or atoms of a sidechain that are expected to be planar.

Mol	Chain	#Chirality outliers	#Planarity outliers
1	A	0	1

All (1) bond length outliers are listed below:

Mol	Chain	Res	Type	Atoms	Z	Observed(Å)	Ideal(Å)
1	A	510	GLU	CD-OE2	8.34	1.34	1.25

All (1) bond angle outliers are listed below:

Mol	Chain	Res	Type	Atoms	Z	Observed(°)	Ideal(°)
1	A	739	ARG	NE-CZ-NH1	5.08	122.84	120.30

There are no chirality outliers.

All (1) planarity outliers are listed below:

Mol	Chain	Res	Type	Group
1	A	273	ASN	Peptide

5.2 Too-close contacts

In the following table, the Non-H and H(model) columns list the number of non-hydrogen atoms and hydrogen atoms in the chain respectively. The H(added) column lists the number of hydrogen atoms added and optimized by MolProbity. The Clashes column lists the number of clashes within the asymmetric unit, whereas Symm-Clashes lists symmetry-related clashes.

Mol	Chain	Non-H	H(model)	H(added)	Clashes	Symm-Clashes
1	A	4781	0	4676	37	0
2	A	2	0	0	0	0
3	A	24	0	26	0	0
4	A	1	0	0	0	0
5	A	12	0	18	3	0
6	A	10	0	0	4	0
7	A	14	0	20	1	0
8	A	15	0	0	0	0
9	A	433	0	0	12	2
All	All	5292	0	4740	41	2

The all-atom clashscore is defined as the number of clashes found per 1000 atoms (including hydrogen atoms). The all-atom clashscore for this structure is 4.

All (41) close contacts within the same asymmetric unit are listed below, sorted by their clash magnitude.

Atom-1	Atom-2	Interatomic distance (Å)	Clash overlap (Å)
1:A:534:ASP:OD1	6:A:1008:PO4:O4	1.95	0.84
1:A:510:GLU:O	1:A:514:LYS:HG3	1.87	0.74
1:A:664:ASP:OD1	6:A:1008:PO4:O4	2.06	0.74
5:A:1005:DMS:C1	9:A:1247:HOH:O	2.47	0.62
1:A:336:PRO:O	1:A:340:GLN:HG2	2.00	0.61
1:A:534:ASP:OD1	6:A:1008:PO4:P	2.60	0.60
1:A:807:GLU:HG3	9:A:1200:HOH:O	2.03	0.58
1:A:664:ASP:OD1	6:A:1008:PO4:P	2.61	0.58
1:A:889:PHE:O	1:A:891:ARG:N	2.37	0.57
5:A:1005:DMS:H11	9:A:1247:HOH:O	2.04	0.57
1:A:454:MET:HB3	1:A:580:VAL:HG13	1.87	0.56
1:A:303:TRP:CE3	1:A:593:ILE:HD12	2.42	0.55
1:A:701:ASN:ND2	9:A:1102:HOH:O	2.22	0.54
1:A:801[B]:HIS:H	1:A:801[B]:HIS:CD2	2.26	0.54
1:A:745:GLY:N	9:A:1114:HOH:O	2.41	0.53
1:A:638:THR:O	1:A:641:ILE:HG22	2.09	0.52
1:A:841:LYS:HE2	9:A:1379:HOH:O	2.13	0.49
1:A:431:PHE:O	1:A:434:LEU:HB2	2.13	0.47

Continued on next page...

Continued from previous page...

Atom-1	Atom-2	Interatomic distance (Å)	Clash overlap (Å)
1:A:733:GLU:O	1:A:737:ARG:HG3	2.14	0.47
1:A:452:TYR:O	1:A:578:VAL:HA	2.15	0.47
1:A:439:ARG:NH1	1:A:487:GLU:OE1	2.49	0.45
1:A:562:LYS:HE3	1:A:566:GLU:OE2	2.15	0.45
1:A:570:LYS:HG3	9:A:1217:HOH:O	2.16	0.45
1:A:453:ASN:ND2	1:A:579:ARG:HD2	2.31	0.45
1:A:303:TRP:CD2	1:A:593:ILE:HD12	2.52	0.44
1:A:841:LYS:CE	9:A:1379:HOH:O	2.65	0.44
1:A:438:GLU:O	1:A:441:LEU:HB2	2.18	0.44
1:A:321:VAL:HG11	1:A:326:ARG:CZ	2.48	0.43
1:A:541:ARG:HD2	1:A:685:GLY:O	2.18	0.43
1:A:447:CYS:SG	1:A:450:CYS:HB2	2.59	0.42
1:A:438:GLU:HG2	9:A:1437:HOH:O	2.18	0.42
1:A:582:ARG:O	1:A:588:THR:HA	2.20	0.41
1:A:693:GLN:HG3	9:A:1312:HOH:O	2.21	0.41
1:A:599:ARG:HG2	1:A:606:THR:HG23	2.02	0.41
1:A:635:LEU:HD23	1:A:640:GLU:HG2	2.03	0.41
5:A:1005:DMS:H13	9:A:1247:HOH:O	2.17	0.41
1:A:878:GLU:OE1	9:A:1101:HOH:O	2.21	0.41
1:A:475:TRP:HZ3	1:A:576:LYS:HD3	1.86	0.41
7:A:1009:PEG:H41	7:A:1009:PEG:H22	1.44	0.40
1:A:438:GLU:HG3	1:A:449:THR:OG1	2.22	0.40
1:A:358:LYS:HG2	1:A:540:THR:HG21	2.03	0.40

All (2) symmetry-related close contacts are listed below. The label for Atom-2 includes the symmetry operator and encoded unit-cell translations to be applied.

Atom-1	Atom-2	Interatomic distance (Å)	Clash overlap (Å)
9:A:1329:HOH:O	9:A:1441:HOH:O[2_545]	1.80	0.40
9:A:1124:HOH:O	9:A:1124:HOH:O[2_445]	1.98	0.22

5.3 Torsion angles [i](#)

5.3.1 Protein backbone [i](#)

In the following table, the Percentiles column shows the percent Ramachandran outliers of the chain as a percentile score with respect to all X-ray entries followed by that with respect to entries of similar resolution.

The Analysed column shows the number of residues for which the backbone conformation was

analysed, and the total number of residues.

Mol	Chain	Analysed	Favoured	Allowed	Outliers	Percentiles
1	A	570/637 (90%)	541 (95%)	25 (4%)	4 (1%)	19 6

All (4) Ramachandran outliers are listed below:

Mol	Chain	Res	Type
1	A	291	SER
1	A	420	LYS
1	A	890	ARG
1	A	312	LYS

5.3.2 Protein sidechains [i](#)

In the following table, the Percentiles column shows the percent sidechain outliers of the chain as a percentile score with respect to all X-ray entries followed by that with respect to entries of similar resolution.

The Analysed column shows the number of residues for which the sidechain conformation was analysed, and the total number of residues.

Mol	Chain	Analysed	Rotameric	Outliers	Percentiles
1	A	515/554 (93%)	494 (96%)	21 (4%)	26 6

All (21) residues with a non-rotameric sidechain are listed below:

Mol	Chain	Res	Type
1	A	273	ASN
1	A	274	LEU
1	A	291	SER
1	A	297	ASP
1	A	311	THR
1	A	356	LYS
1	A	359	VAL
1	A	375	LYS
1	A	423	ARG
1	A	426	VAL
1	A	429	SER
1	A	438	GLU
1	A	474	ILE
1	A	482	ARG
1	A	580	VAL
1	A	601	SER

Continued on next page...

Continued from previous page...

Mol	Chain	Res	Type
1	A	630	LYS
1	A	634	HIS
1	A	637	VAL
1	A	641	ILE
1	A	693	GLN

Sometimes sidechains can be flipped to improve hydrogen bonding and reduce clashes. All (3) such sidechains are listed below:

Mol	Chain	Res	Type
1	A	417	ASN
1	A	693	GLN
1	A	862	ASN

5.3.3 RNA [i](#)

There are no RNA molecules in this entry.

5.4 Non-standard residues in protein, DNA, RNA chains [i](#)

There are no non-standard protein/DNA/RNA residues in this entry.

5.5 Carbohydrates [i](#)

There are no oligosaccharides in this entry.

5.6 Ligand geometry [i](#)

Of 13 ligands modelled in this entry, 3 are monoatomic - leaving 10 for Mogul analysis.

In the following table, the Counts columns list the number of bonds (or angles) for which Mogul statistics could be retrieved, the number of bonds (or angles) that are observed in the model and the number of bonds (or angles) that are defined in the Chemical Component Dictionary. The Link column lists molecule types, if any, to which the group is linked. The Z score for a bond length (or angle) is the number of standard deviations the observed value is removed from the expected value. A bond length (or angle) with $|Z| > 2$ is considered an outlier worth inspection. RMSZ is the root-mean-square of all Z scores of the bond lengths (or angles).

Mol	Type	Chain	Res	Link	Bond lengths			Bond angles		
					Counts	RMSZ	$\# Z > 2$	Counts	RMSZ	$\# Z > 2$
6	PO4	A	1010	-	4,4,4	1.25	1 (25%)	6,6,6	0.33	0

Mol	Type	Chain	Res	Link	Bond lengths			Bond angles		
					Counts	RMSZ	# Z > 2	Counts	RMSZ	# Z > 2
5	DMS	A	1005	-	3,3,3	0.52	0	3,3,3	0.40	0
6	PO4	A	1008	-	4,4,4	3.86	4 (100%)	6,6,6	0.80	0
7	PEG	A	1009	-	6,6,6	0.13	0	5,5,5	0.07	0
3	MES	A	1003[A]	-	12,12,12	0.78	0	15,16,16	0.47	0
7	PEG	A	1011	-	6,6,6	0.14	0	5,5,5	0.09	0
5	DMS	A	1006	-	3,3,3	0.20	0	3,3,3	0.04	0
5	DMS	A	1007	-	3,3,3	0.14	0	3,3,3	0.37	0
8	LV4	A	1012	-	15,15,15	0.24	0	20,21,21	0.35	0
3	MES	A	1003[B]	-	12,12,12	0.85	0	15,16,16	0.65	0

In the following table, the Chirals column lists the number of chiral outliers, the number of chiral centers analysed, the number of these observed in the model and the number defined in the Chemical Component Dictionary. Similar counts are reported in the Torsion and Rings columns. '2' means no outliers of that kind were identified.

Mol	Type	Chain	Res	Link	Chirals	Torsions	Rings
7	PEG	A	1009	-	-	3/4/4/4	-
3	MES	A	1003[A]	-	-	3/6/14/14	0/1/1/1
7	PEG	A	1011	-	-	2/4/4/4	-
8	LV4	A	1012	-	-	0/9/9/9	0/1/1/1
3	MES	A	1003[B]	-	-	2/6/14/14	0/1/1/1

All (5) bond length outliers are listed below:

Mol	Chain	Res	Type	Atoms	Z	Observed(Å)	Ideal(Å)
6	A	1008	PO4	P-O1	6.33	1.65	1.50
6	A	1008	PO4	P-O2	2.79	1.62	1.54
6	A	1008	PO4	P-O4	-2.71	1.46	1.54
6	A	1010	PO4	P-O1	2.46	1.56	1.50
6	A	1008	PO4	P-O3	2.09	1.60	1.54

There are no bond angle outliers.

There are no chirality outliers.

All (10) torsion outliers are listed below:

Mol	Chain	Res	Type	Atoms
3	A	1003[A]	MES	C7-C8-S-O1S
3	A	1003[A]	MES	C7-C8-S-O3S
3	A	1003[B]	MES	C8-C7-N4-C3
7	A	1009	PEG	C4-C3-O2-C2

Continued on next page...

Continued from previous page...

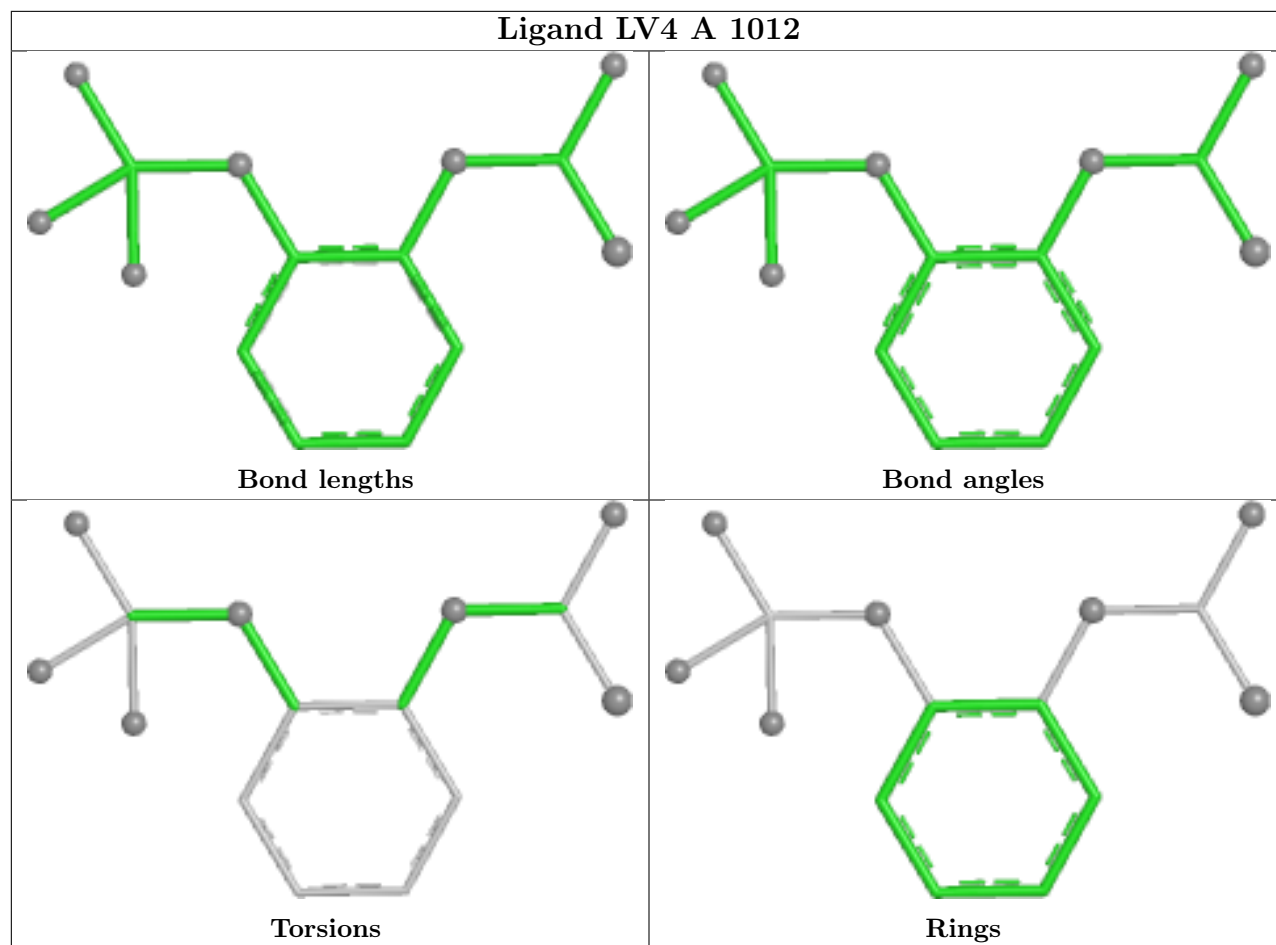
Mol	Chain	Res	Type	Atoms
7	A	1011	PEG	O2-C3-C4-O4
3	A	1003[A]	MES	C7-C8-S-O2S
7	A	1011	PEG	C4-C3-O2-C2
7	A	1009	PEG	C1-C2-O2-C3
7	A	1009	PEG	O2-C3-C4-O4
3	A	1003[B]	MES	C8-C7-N4-C5

There are no ring outliers.

3 monomers are involved in 8 short contacts:

Mol	Chain	Res	Type	Clashes	Symm-Clashes
5	A	1005	DMS	3	0
6	A	1008	PO4	4	0
7	A	1009	PEG	1	0

The following is a two-dimensional graphical depiction of Mogul quality analysis of bond lengths, bond angles, torsion angles, and ring geometry for all instances of the Ligand of Interest. In addition, ligands with molecular weight > 250 and outliers as shown on the validation Tables will also be included. For torsion angles, if less than 5% of the Mogul distribution of torsion angles is within 10 degrees of the torsion angle in question, then that torsion angle is considered an outlier. Any bond that is central to one or more torsion angles identified as an outlier by Mogul will be highlighted in the graph. For rings, the root-mean-square deviation (RMSD) between the ring in question and similar rings identified by Mogul is calculated over all ring torsion angles. If the average RMSD is greater than 60 degrees and the minimal RMSD between the ring in question and any Mogul-identified rings is also greater than 60 degrees, then that ring is considered an outlier. The outliers are highlighted in purple. The color gray indicates Mogul did not find sufficient equivalents in the CSD to analyse the geometry.



5.7 Other polymers [i](#)

There are no such residues in this entry.

5.8 Polymer linkage issues [i](#)

There are no chain breaks in this entry.

6 Fit of model and data

6.1 Protein, DNA and RNA chains

Warning: The R factor obtained from EDS is 0.2528, which does not match the depositor's R factor of 0.19979. Please interpret the results in this section carefully.

In the following table, the column labelled '#RSRZ > 2' contains the number (and percentage) of RSRZ outliers, followed by percent RSRZ outliers for the chain as percentile scores relative to all X-ray entries and entries of similar resolution. The OWAB column contains the minimum, median, 95th percentile and maximum values of the occupancy-weighted average B-factor per residue. The column labelled 'Q < 0.9' lists the number of (and percentage) of residues with an average occupancy less than 0.9.

Mol	Chain	Analysed	<RSRZ>	#RSRZ > 2	OWAB(Å ²)	Q < 0.9
1	A	576/637 (90%)	1.97	144 (25%) 2 2	8, 44, 120, 171	36 (6%)

All (144) RSRZ outliers are listed below:

Mol	Chain	Res	Type	RSRZ
1	A	486	PHE	34.0
1	A	399	PHE	32.2
1	A	604	VAL	32.1
1	A	479	LEU	29.9
1	A	403	VAL	29.4
1	A	407	ALA	22.3
1	A	482	ARG	22.3
1	A	402	LYS	21.2
1	A	603	GLN	18.4
1	A	512[A]	LEU	14.7
1	A	830	VAL	14.4
1	A	719[A]	LYS	14.2
1	A	853	LEU	13.7
1	A	801[A]	HIS	13.5
1	A	788	VAL	13.1
1	A	774	LEU	13.1
1	A	818	ILE	12.9
1	A	518	ILE	12.5
1	A	522	VAL	12.1
1	A	789	PRO	10.6
1	A	704	THR	10.4
1	A	790	THR	10.1
1	A	854	THR	9.5
1	A	741[A]	SER	9.5

Continued on next page...

Continued from previous page...

Mol	Chain	Res	Type	RSRZ
1	A	514	LYS	9.5
1	A	855	SER	9.4
1	A	856	ARG	9.3
1	A	551[A]	GLU	8.9
1	A	763[A]	SER	8.9
1	A	864[A]	GLN	8.5
1	A	705	GLN	8.2
1	A	702	ASP	8.1
1	A	819	GLN	7.9
1	A	785[A]	SER	7.8
1	A	888	ARG	7.4
1	A	799	ALA	7.4
1	A	589	VAL	6.4
1	A	355	PHE	5.3
1	A	474	ILE	4.9
1	A	600	GLY	4.9
1	A	475	TRP	4.7
1	A	419	TRP	4.7
1	A	359	VAL	4.4
1	A	431	PHE	4.4
1	A	292	TRP	4.4
1	A	750	GLU	4.3
1	A	794	THR	4.2
1	A	406	ASN	4.1
1	A	742	GLN	4.1
1	A	293	HIS	4.0
1	A	478	TRP	4.0
1	A	452	TYR	3.9
1	A	605	VAL	3.8
1	A	363	THR	3.8
1	A	584	THR	3.7
1	A	473	ALA	3.6
1	A	637	VAL	3.5
1	A	480	GLY	3.4
1	A	880	THR	3.4
1	A	791	SER	3.3
1	A	317	ALA	3.3
1	A	580	VAL	3.2
1	A	602	GLY	3.2
1	A	286	GLN	3.2
1	A	593	ILE	3.1
1	A	481	ALA	3.1

Continued on next page...

Continued from previous page...

Mol	Chain	Res	Type	RSRZ
1	A	476	TYR	3.1
1	A	745	GLY	3.1
1	A	477	MET	3.1
1	A	746	TRP	3.1
1	A	281	ILE	3.0
1	A	309	TYR	3.0
1	A	298	HIS	2.9
1	A	436	ASP	2.9
1	A	291	SER	2.9
1	A	435	VAL	2.9
1	A	314	THR	2.8
1	A	344	THR	2.8
1	A	588	THR	2.8
1	A	426	VAL	2.7
1	A	294	TYR	2.7
1	A	300	TYR	2.7
1	A	305	TYR	2.7
1	A	571	LEU	2.7
1	A	288	HIS	2.7
1	A	434	LEU	2.7
1	A	635	LEU	2.7
1	A	592	ILE	2.7
1	A	303	TRP	2.7
1	A	443	LEU	2.6
1	A	483	PHE	2.6
1	A	319	SER	2.6
1	A	301	LYS	2.6
1	A	356	LYS	2.6
1	A	793	THR	2.6
1	A	358	LYS	2.5
1	A	583	PRO	2.5
1	A	342	ALA	2.5
1	A	641	ILE	2.5
1	A	455	MET	2.5
1	A	421	SER	2.5
1	A	882	TYR	2.5
1	A	582	ARG	2.5
1	A	534	ASP	2.5
1	A	448	GLU	2.5
1	A	454	MET	2.5
1	A	596	ARG	2.4
1	A	422	ALA	2.4

Continued on next page...

Continued from previous page...

Mol	Chain	Res	Type	RSRZ
1	A	308	SER	2.4
1	A	439	ARG	2.4
1	A	290	THR	2.4
1	A	800	THR	2.4
1	A	744	ALA	2.4
1	A	274	LEU	2.4
1	A	642	ALA	2.4
1	A	401	ARG	2.3
1	A	432	TRP	2.3
1	A	629	PHE	2.3
1	A	299	PRO	2.3
1	A	311	THR	2.3
1	A	361	THR	2.3
1	A	881	ASP	2.2
1	A	625	GLY	2.2
1	A	865	THR	2.2
1	A	297	ASP	2.2
1	A	597	ASP	2.2
1	A	555	ASN	2.2
1	A	578	VAL	2.2
1	A	634	HIS	2.2
1	A	284	ILE	2.1
1	A	632	ILE	2.1
1	A	497	TRP	2.1
1	A	441	LEU	2.1
1	A	743	GLY	2.1
1	A	428	ASP	2.1
1	A	404	ARG	2.1
1	A	445	GLY	2.1
1	A	366	PRO	2.1
1	A	628	VAL	2.1
1	A	701	ASN	2.0
1	A	442	HIS	2.0
1	A	590	MET	2.0
1	A	405	SER	2.0
1	A	277	ILE	2.0

6.2 Non-standard residues in protein, DNA, RNA chains

There are no non-standard protein/DNA/RNA residues in this entry.

6.3 Carbohydrates [i](#)

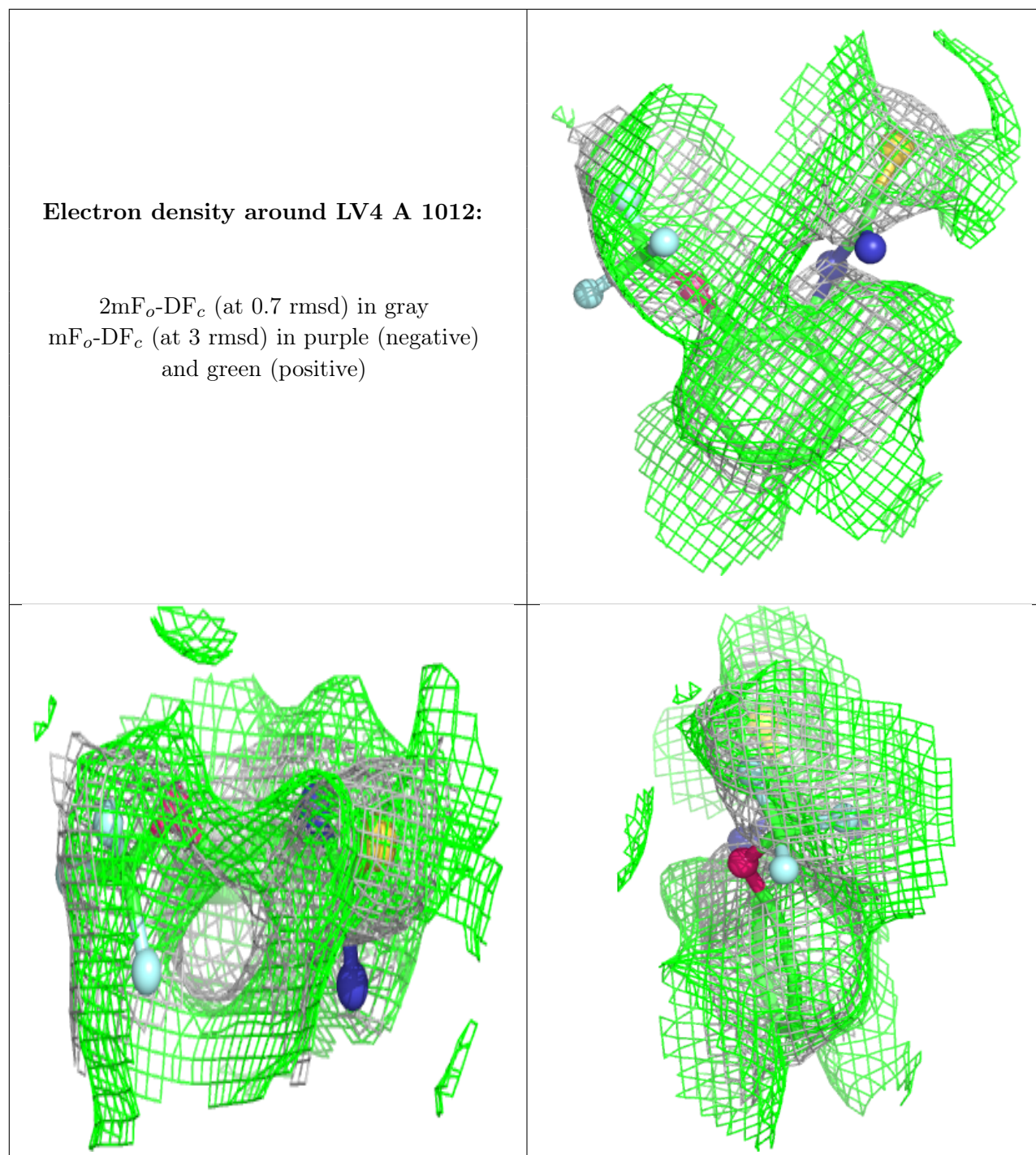
There are no monosaccharides in this entry.

6.4 Ligands [i](#)

In the following table, the Atoms column lists the number of modelled atoms in the group and the number defined in the chemical component dictionary. The B-factors column lists the minimum, median, 95th percentile and maximum values of B factors of atoms in the group. The column labelled 'Q< 0.9' lists the number of atoms with occupancy less than 0.9.

Mol	Type	Chain	Res	Atoms	RSCC	RSR	B-factors(Å ²)	Q<0.9
7	PEG	A	1009	7/7	0.46	0.69	164,176,183,183	7
8	LV4	A	1012	15/15	0.71	0.58	32,39,42,42	15
6	PO4	A	1010	5/5	0.77	0.14	91,93,109,129	0
6	PO4	A	1008	5/5	0.83	0.11	36,40,51,67	0
7	PEG	A	1011	7/7	0.90	0.39	62,63,65,65	7
5	DMS	A	1006	4/4	0.92	0.15	81,95,96,98	0
5	DMS	A	1007	4/4	0.95	0.11	57,63,63,67	0
3	MES	A	1003[B]	12/12	0.95	0.23	30,35,38,39	12
3	MES	A	1003[A]	12/12	0.95	0.23	844,866,902,903	12
5	DMS	A	1005	4/4	0.96	0.10	52,52,53,53	0
2	ZN	A	1002	1/1	0.99	0.05	60,60,60,60	0
4	CL	A	1004	1/1	0.99	0.04	44,44,44,44	0
2	ZN	A	1001	1/1	1.00	0.02	28,28,28,28	0

The following is a graphical depiction of the model fit to experimental electron density of all instances of the Ligand of Interest. In addition, ligands with molecular weight > 250 and outliers as shown on the geometry validation Tables will also be included. Each fit is shown from different orientation to approximate a three-dimensional view.



6.5 Other polymers [i](#)

There are no such residues in this entry.