



Full wwPDB X-ray Structure Validation Report ⓘ

Aug 9, 2020 – 11:34 PM BST

PDB ID : 3HMG
Title : REFINEMENT OF THE INFLUENZA VIRUS HEMAGGLUTININ BY SIMULATED ANNEALING
Authors : Weis, W.I.; Bruenger, A.T.; Skehel, J.J.; Wiley, D.C.
Deposited on : 1989-09-11
Resolution : 2.90 Å(reported)

This is a Full wwPDB X-ray Structure Validation Report for a publicly released PDB entry.

We welcome your comments at validation@mail.wwpdb.org

A user guide is available at

<https://www.wwpdb.org/validation/2017/XrayValidationReportHelp>

with specific help available everywhere you see the ⓘ symbol.

The following versions of software and data (see [references ⓘ](#)) were used in the production of this report:

MolProbity : 4.02b-467
Mogul : 1.8.5 (274361), CSD as541be (2020)
Xtriage (Phenix) : 1.13
EDS : 2.13.1
Percentile statistics : 20191225.v01 (using entries in the PDB archive December 25th 2019)
Refmac : 5.8.0158
CCP4 : 7.0.044 (Gargrove)
Ideal geometry (proteins) : Engh & Huber (2001)
Ideal geometry (DNA, RNA) : Parkinson et al. (1996)
Validation Pipeline (wwPDB-VP) : 2.13.1

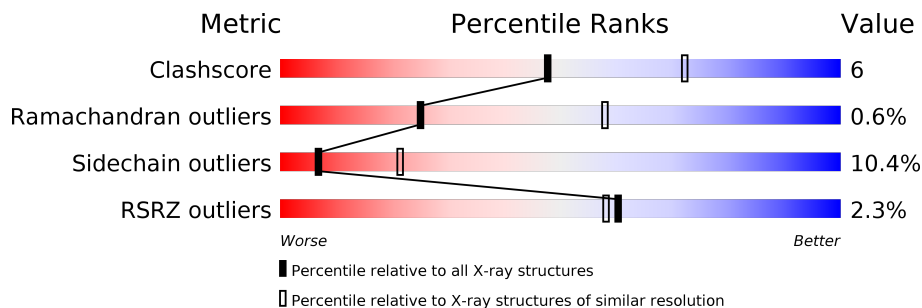
1 Overall quality at a glance i

The following experimental techniques were used to determine the structure:

X-RAY DIFFRACTION

The reported resolution of this entry is 2.90 Å.

Percentile scores (ranging between 0-100) for global validation metrics of the entry are shown in the following graphic. The table shows the number of entries on which the scores are based.



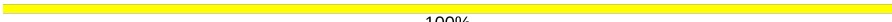
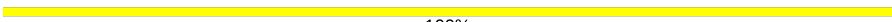
Metric	Whole archive (#Entries)	Similar resolution (#Entries, resolution range(Å))
Clashscore	141614	2172 (2.90-2.90)
Ramachandran outliers	138981	2115 (2.90-2.90)
Sidechain outliers	138945	2117 (2.90-2.90)
RSRZ outliers	127900	1906 (2.90-2.90)

The table below summarises the geometric issues observed across the polymeric chains and their fit to the electron density. The red, orange, yellow and green segments on the lower bar indicate the fraction of residues that contain outliers for ≥ 3 , 2, 1 and 0 types of geometric quality criteria respectively. A grey segment represents the fraction of residues that are not modelled. The numeric value for each fraction is indicated below the corresponding segment, with a dot representing fractions $\leq 5\%$. The upper red bar (where present) indicates the fraction of residues that have poor fit to the electron density. The numeric value is given above the bar.

Mol	Chain	Length	Quality of chain
1	A	328	<p>3% 73% 22% 5% . .</p>
1	C	328	<p>3% 71% 23% 5% .</p>
1	E	328	<p>3% 73% 22% 5% .</p>
2	B	175	<p>% 75% 21% 5%</p>
2	D	175	<p>% 74% 22% .</p>
2	F	175	<p>2% 71% 23% 6%</p>
3	G	3	<p>100%</p>

Continued on next page...

Continued from previous page...

Mol	Chain	Length	Quality of chain
3	H	3	 100%
3	I	3	 100%

2 Entry composition [i](#)

There are 5 unique types of molecules in this entry. The entry contains 12180 atoms, of which 0 are hydrogens and 0 are deuteriums.

In the tables below, the ZeroOcc column contains the number of atoms modelled with zero occupancy, the AltConf column contains the number of residues with at least one atom in alternate conformation and the Trace column contains the number of residues modelled with at most 2 atoms.

- Molecule 1 is a protein called HEMAGGLUTININ.

Mol	Chain	Residues	Atoms					ZeroOcc	AltConf	Trace
			Total	C	N	O	S			
1	A	328	2533	1580	446	494	13	0	0	0
1	C	328	2533	1580	446	494	13	0	0	0
1	E	328	2533	1580	446	494	13	0	0	0

There are 3 discrepancies between the modelled and reference sequences:

Chain	Residue	Modelled	Actual	Comment	Reference
A	226	GLN	LEU	conflict	UNP P03437
C	226	GLN	LEU	conflict	UNP P03437
E	226	GLN	LEU	conflict	UNP P03437

- Molecule 2 is a protein called HEMAGGLUTININ.

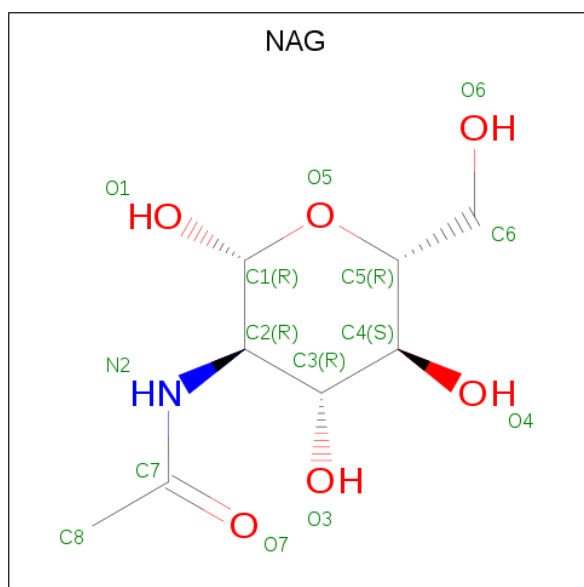
Mol	Chain	Residues	Atoms					ZeroOcc	AltConf	Trace
			Total	C	N	O	S			
2	B	175	1421	882	250	283	6	0	0	0
2	D	175	1421	882	250	283	6	0	0	0
2	F	175	1421	882	250	283	6	0	0	0

- Molecule 3 is an oligosaccharide called beta-D-mannopyranose-(1-4)-2-acetamido-2-deoxy-beta-D-glucopyranose-(1-4)-2-acetamido-2-deoxy-beta-D-glucopyranose.



Mol	Chain	Residues	Atoms				ZeroOcc	AltConf	Trace
3	G	3	Total	C	N	O	0	0	0
			39	22	2	15			
3	H	3	Total	C	N	O	0	0	0
			39	22	2	15			
3	I	3	Total	C	N	O	0	0	0
			39	22	2	15			

- Molecule 4 is 2-acetamido-2-deoxy-beta-D-glucopyranose (three-letter code: NAG) (formula: $C_8H_{15}NO_6$).



Mol	Chain	Residues	Atoms				ZeroOcc	AltConf
4	A	1	Total	C	N	O	0	0
			14	8	1	5		
4	A	1	Total	C	N	O	0	0
			14	8	1	5		
4	A	1	Total	C	N	O	0	0
			14	8	1	5		
4	B	1	Total	C	N	O	0	0
			14	8	1	5		
4	C	1	Total	C	N	O	0	0
			14	8	1	5		
4	C	1	Total	C	N	O	0	0
			14	8	1	5		
4	C	1	Total	C	N	O	0	0
			14	8	1	5		
4	D	1	Total	C	N	O	0	0
			14	8	1	5		

Continued on next page...

Continued from previous page...

Mol	Chain	Residues	Atoms				ZeroOcc	AltConf
4	E	1	Total	C	N	O	0	0
			14	8	1	5		
4	E	1	Total	C	N	O	0	0
			14	8	1	5		
4	E	1	Total	C	N	O	0	0
			14	8	1	5		
4	F	1	Total	C	N	O	0	0
			14	8	1	5		

- Molecule 5 is water.

Mol	Chain	Residues	Atoms		ZeroOcc	AltConf
5	A	6	Total	O	0	0
			6	6		
5	B	5	Total	O	0	0
			5	5		
5	C	6	Total	O	0	0
			6	6		
5	D	5	Total	O	0	0
			5	5		
5	E	6	Total	O	0	0
			6	6		
5	F	5	Total	O	0	0
			5	5		

3 Residue-property plots [i](#)

These plots are drawn for all protein, RNA, DNA and oligosaccharide chains in the entry. The first graphic for a chain summarises the proportions of the various outlier classes displayed in the second graphic. The second graphic shows the sequence view annotated by issues in geometry and electron density. Residues are color-coded according to the number of geometric quality criteria for which they contain at least one outlier: green = 0, yellow = 1, orange = 2 and red = 3 or more. A red dot above a residue indicates a poor fit to the electron density ($RSRZ > 2$). Stretches of 2 or more consecutive residues without any outlier are shown as a green connector. Residues present in the sample, but not in the model, are shown in grey.

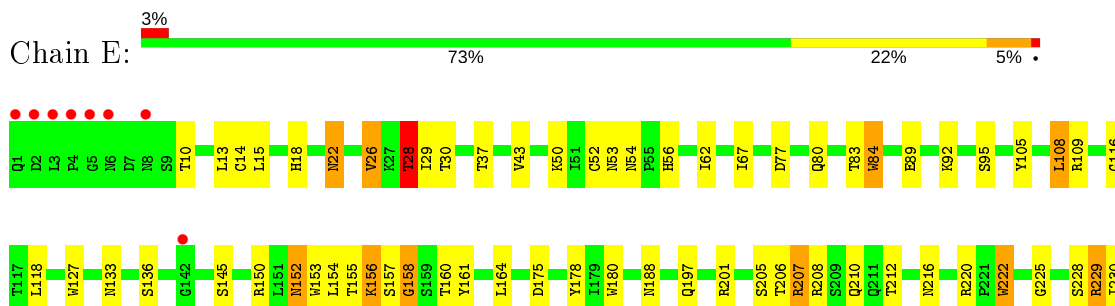
- Molecule 1: HEMAGGLUTININ



- Molecule 1: HEMAGGLUTININ

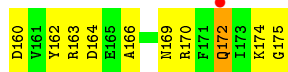
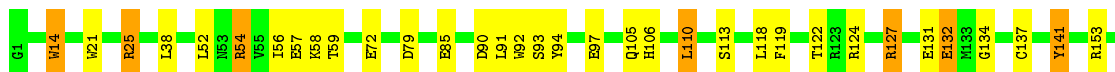
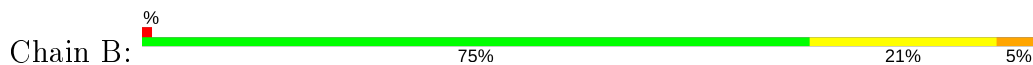


- Molecule 1: HEMAGGLUTININ

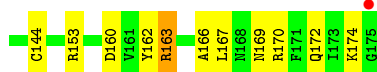
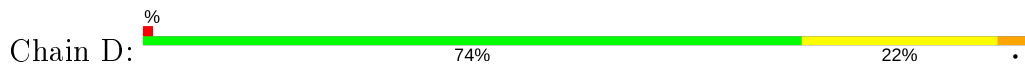




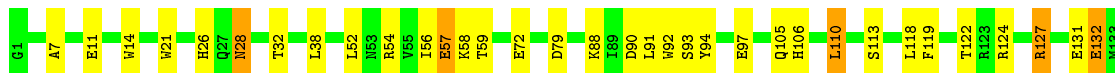
● Molecule 2: HEMAGGLUTININ



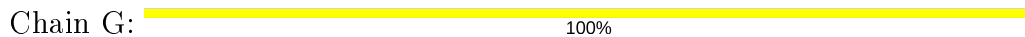
● Molecule 2: HEMAGGLUTININ



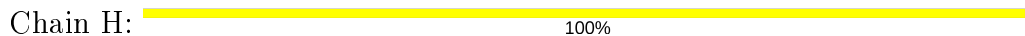
● Molecule 2: HEMAGGLUTININ



● Molecule 3: beta-D-mannopyranose-(1-4)-2-acetamido-2-deoxy-beta-D-glucopyranose-(1-4)-2-acetamido-2-deoxy-beta-D-glucopyranose



● Molecule 3: beta-D-mannopyranose-(1-4)-2-acetamido-2-deoxy-beta-D-glucopyranose-(1-4)-2-acetamido-2-deoxy-beta-D-glucopyranose



- Molecule 3: beta-D-mannopyranose-(1-4)-2-acetamido-2-deoxy-beta-D-glucopyranose-(1-4)-2-acetamido-2-deoxy-beta-D-glucopyranose

Chain I:

100%

MAG1
MAG2
B0LA3

4 Data and refinement statistics i

Property	Value	Source
Space group	P 41	Depositor
Cell constants a, b, c, α , β , γ	162.80Å 162.80Å 177.30Å 90.00° 90.00° 90.00°	Depositor
Resolution (Å)	(Not available) – 2.90 7.00 – 2.90	Depositor EDS
% Data completeness (in resolution range)	(Not available) ((Not available)-2.90) 78.9 (7.00-2.90)	Depositor EDS
R_{merge}	(Not available)	Depositor
R_{sym}	(Not available)	Depositor
$\langle I/\sigma(I) \rangle$	-	Xtrriage
Refinement program	X-PLOR	Depositor
R, R_{free}	0.238 , (Not available) 0.225 , (Not available)	Depositor DCC
R_{free} test set	No test flags present.	wwPDB-VP
Wilson B-factor (Å ²)	35.5	Xtrriage
Anisotropy	0.061	Xtrriage
Bulk solvent k_{sol} (e/Å ³), B_{sol} (Å ²)	0.27 , 48.2	EDS
L-test for twinning ¹	$\langle L \rangle = 0.43$, $\langle L^2 \rangle = 0.25$	Xtrriage
Estimated twinning fraction	0.054 for h,-k,-l	Xtrriage
F_o, F_c correlation	0.87	EDS
Total number of atoms	12180	wwPDB-VP
Average B, all atoms (Å ²)	25.0	wwPDB-VP

Xtrriage's analysis on translational NCS is as follows: *The largest off-origin peak in the Patterson function is 3.00% of the height of the origin peak. No significant pseudotranslation is detected.*

¹Theoretical values of $\langle |L| \rangle$, $\langle L^2 \rangle$ for acentric reflections are 0.5, 0.333 respectively for untwinned datasets, and 0.375, 0.2 for perfectly twinned datasets.

5 Model quality i

5.1 Standard geometry i

Bond lengths and bond angles in the following residue types are not validated in this section: BMA, NAG

The Z score for a bond length (or angle) is the number of standard deviations the observed value is removed from the expected value. A bond length (or angle) with $|Z| > 5$ is considered an outlier worth inspection. RMSZ is the root-mean-square of all Z scores of the bond lengths (or angles).

Mol	Chain	Bond lengths		Bond angles	
		RMSZ	# Z >5	RMSZ	# Z >5
1	A	0.90	1/2590 (0.0%)	1.48	37/3528 (1.0%)
1	C	0.90	0/2590	1.51	37/3528 (1.0%)
1	E	0.90	1/2590 (0.0%)	1.51	39/3528 (1.1%)
2	B	1.00	1/1445 (0.1%)	1.54	22/1939 (1.1%)
2	D	1.00	0/1445	1.53	23/1939 (1.2%)
2	F	0.99	0/1445	1.55	26/1939 (1.3%)
All	All	0.94	3/12105 (0.0%)	1.52	184/16401 (1.1%)

All (3) bond length outliers are listed below:

Mol	Chain	Res	Type	Atoms	Z	Observed(Å)	Ideal(Å)
1	A	234	TRP	CG-CD2	-5.36	1.34	1.43
1	E	234	TRP	CG-CD2	-5.35	1.34	1.43
2	B	85	GLU	CD-OE1	-5.30	1.19	1.25

All (184) bond angle outliers are listed below:

Mol	Chain	Res	Type	Atoms	Z	Observed(°)	Ideal(°)
2	D	153	ARG	NE-CZ-NH1	-11.57	114.52	120.30
1	C	161	TYR	CB-CG-CD2	-10.19	114.89	121.00
2	F	14	TRP	CD1-CG-CD2	9.75	114.10	106.30
2	D	170	ARG	NE-CZ-NH1	-9.66	115.47	120.30
1	E	207	ARG	NE-CZ-NH1	-9.32	115.64	120.30
2	B	92	TRP	CD1-CG-CD2	9.31	113.75	106.30
2	F	170	ARG	NE-CZ-NH1	-9.02	115.79	120.30
2	B	14	TRP	CD1-CG-CD2	9.01	113.51	106.30
1	A	321	ARG	NE-CZ-NH1	-9.00	115.80	120.30
1	E	180	TRP	CD1-CG-CD2	8.94	113.45	106.30
2	B	153	ARG	NE-CZ-NH1	-8.85	115.87	120.30
2	D	92	TRP	CD1-CG-CD2	8.83	113.37	106.30

Continued on next page...

Continued from previous page...

Mol	Chain	Res	Type	Atoms	Z	Observed(°)	Ideal(°)
1	C	180	TRP	CD1-CG-CD2	8.80	113.34	106.30
2	B	170	ARG	NE-CZ-NH1	-8.65	115.97	120.30
1	C	127	TRP	CD1-CG-CD2	8.54	113.13	106.30
2	D	14	TRP	CD1-CG-CD2	8.49	113.09	106.30
2	F	153	ARG	NE-CZ-NH1	-8.46	116.07	120.30
1	A	207	ARG	NE-CZ-NH1	-8.41	116.09	120.30
2	B	90	ASP	CB-CG-OD1	8.38	125.84	118.30
1	C	269	ARG	NE-CZ-NH1	-8.30	116.15	120.30
2	F	92	TRP	CD1-CG-CD2	8.25	112.90	106.30
1	E	222	TRP	CD1-CG-CD2	8.21	112.87	106.30
2	F	124	ARG	NE-CZ-NH1	-8.21	116.20	120.30
2	D	170	ARG	NE-CZ-NH2	8.21	124.40	120.30
1	E	28	THR	CA-CB-CG2	8.17	123.84	112.40
2	F	90	ASP	CB-CG-OD1	8.17	125.65	118.30
1	C	180	TRP	CE2-CD2-CG	-8.16	100.77	107.30
1	A	127	TRP	CD1-CG-CD2	8.10	112.78	106.30
1	E	127	TRP	CD1-CG-CD2	8.10	112.78	106.30
1	C	321	ARG	NE-CZ-NH1	-8.04	116.28	120.30
2	D	14	TRP	CE2-CD2-CG	-7.89	100.98	107.30
1	E	321	ARG	NE-CZ-NH1	-7.87	116.36	120.30
1	E	229	ARG	NE-CZ-NH1	-7.81	116.39	120.30
2	F	14	TRP	CE2-CD2-CG	-7.81	101.05	107.30
2	F	170	ARG	NE-CZ-NH2	7.77	124.18	120.30
1	A	180	TRP	CD1-CG-CD2	7.71	112.47	106.30
1	A	28	THR	CA-CB-CG2	7.69	123.16	112.40
2	B	14	TRP	CE2-CD2-CG	-7.64	101.19	107.30
1	C	222	TRP	CD1-CG-CD2	7.61	112.39	106.30
1	A	222	TRP	CD1-CG-CD2	7.60	112.38	106.30
1	A	201	ARG	NE-CZ-NH1	-7.60	116.50	120.30
2	B	92	TRP	CE2-CD2-CG	-7.58	101.24	107.30
1	E	180	TRP	CE2-CD2-CG	-7.56	101.25	107.30
1	C	84	TRP	CD1-CG-CD2	7.50	112.30	106.30
1	E	222	TRP	CE2-CD2-CG	-7.46	101.33	107.30
1	A	321	ARG	NE-CZ-NH2	7.43	124.02	120.30
2	F	141	TYR	CB-CG-CD2	-7.40	116.56	121.00
1	C	28	THR	CA-CB-CG2	7.40	122.76	112.40
1	E	153	TRP	CD1-CG-CD2	7.39	112.21	106.30
2	D	92	TRP	CE2-CD2-CG	-7.37	101.40	107.30
1	C	255	ARG	NE-CZ-NH1	-7.36	116.62	120.30
1	A	84	TRP	CD1-CG-CD2	7.34	112.17	106.30
1	C	26	VAL	CA-CB-CG2	-7.32	99.92	110.90
1	E	84	TRP	CD1-CG-CD2	7.31	112.14	106.30

Continued on next page...

Continued from previous page...

Mol	Chain	Res	Type	Atoms	Z	Observed(°)	Ideal(°)
1	C	229	ARG	NE-CZ-NH1	-7.30	116.65	120.30
2	B	124	ARG	NE-CZ-NH1	-7.26	116.67	120.30
1	A	105	TYR	CB-CG-CD2	-7.24	116.66	121.00
1	C	207	ARG	NE-CZ-NH1	-7.21	116.70	120.30
2	D	90	ASP	CB-CG-OD1	7.21	124.79	118.30
1	C	84	TRP	CE2-CD2-CG	-7.18	101.56	107.30
1	A	178	TYR	CB-CG-CD2	-7.18	116.69	121.00
1	C	321	ARG	NE-CZ-NH2	7.17	123.89	120.30
1	C	153	TRP	CD1-CG-CD2	7.13	112.01	106.30
1	C	127	TRP	CE2-CD2-CG	-7.13	101.60	107.30
1	C	178	TYR	CB-CG-CD2	-7.11	116.73	121.00
1	E	84	TRP	CE2-CD2-CG	-7.11	101.61	107.30
1	E	105	TYR	CB-CG-CD2	-7.05	116.77	121.00
1	E	178	TYR	CB-CG-CD2	-7.04	116.77	121.00
2	D	21	TRP	CD1-CG-CD2	7.04	111.93	106.30
1	A	84	TRP	CE2-CD2-CG	-7.03	101.68	107.30
1	E	269	ARG	NE-CZ-NH1	-7.01	116.79	120.30
1	C	161	TYR	CB-CG-CD1	7.01	125.21	121.00
2	F	92	TRP	CE2-CD2-CG	-7.00	101.70	107.30
1	C	201	ARG	NE-CZ-NH1	-6.99	116.80	120.30
1	A	26	VAL	CA-CB-CG2	-6.96	100.46	110.90
2	B	170	ARG	NE-CZ-NH2	6.94	123.77	120.30
1	A	127	TRP	CE2-CD2-CG	-6.92	101.76	107.30
1	A	153	TRP	CD1-CG-CD2	6.90	111.82	106.30
1	A	180	TRP	CE2-CD2-CG	-6.78	101.87	107.30
1	C	222	TRP	CE2-CD2-CG	-6.71	101.93	107.30
1	E	127	TRP	CE2-CD2-CG	-6.68	101.96	107.30
1	E	234	TRP	CD1-CG-CD2	6.65	111.62	106.30
2	D	124	ARG	NE-CZ-NH1	-6.65	116.98	120.30
1	A	222	TRP	CE2-CD2-CG	-6.63	101.99	107.30
1	E	255	ARG	NE-CZ-NH2	6.61	123.60	120.30
1	C	234	TRP	CD1-CG-CD2	6.59	111.58	106.30
2	B	141	TYR	CB-CG-CD2	-6.52	117.09	121.00
1	E	208	ARG	NE-CZ-NH2	6.52	123.56	120.30
1	E	180	TRP	CG-CD2-CE3	6.41	139.67	133.90
2	B	21	TRP	CD1-CG-CD2	6.40	111.42	106.30
1	C	105	TYR	CB-CG-CD2	-6.39	117.17	121.00
1	E	26	VAL	CA-CB-CG2	-6.37	101.34	110.90
2	D	92	TRP	CG-CD1-NE1	-6.32	103.78	110.10
1	E	229	ARG	NE-CZ-NH2	6.32	123.46	120.30
1	A	153	TRP	CE2-CD2-CG	-6.28	102.28	107.30
2	F	21	TRP	CD1-CG-CD2	6.26	111.31	106.30

Continued on next page...

Continued from previous page...

Mol	Chain	Res	Type	Atoms	Z	Observed(°)	Ideal(°)
2	F	14	TRP	CG-CD1-NE1	-6.24	103.86	110.10
2	B	21	TRP	CE2-CD2-CG	-6.22	102.33	107.30
2	F	28	ASN	OD1-CG-ND2	-6.21	107.61	121.90
1	A	234	TRP	CD1-CG-CD2	6.21	111.27	106.30
1	A	208	ARG	NE-CZ-NH2	6.17	123.39	120.30
2	D	21	TRP	CE2-CD2-CG	-6.15	102.38	107.30
2	F	28	ASN	CB-CG-ND2	6.12	131.39	116.70
1	C	208	ARG	NE-CZ-NH1	-6.12	117.24	120.30
1	E	201	ARG	NE-CZ-NH1	-6.08	117.26	120.30
1	C	127	TRP	CG-CD1-NE1	-6.05	104.05	110.10
1	A	234	TRP	CE2-CD2-CG	-6.04	102.47	107.30
2	B	14	TRP	CG-CD1-NE1	-6.02	104.08	110.10
1	E	180	TRP	CB-CG-CD1	-5.94	119.28	127.00
2	B	172	GLN	CB-CG-CD	5.94	127.04	111.60
1	E	28	THR	CA-CB-OG1	-5.92	96.56	109.00
1	A	208	ARG	NE-CZ-NH1	-5.92	117.34	120.30
1	C	234	TRP	CE2-CD2-CG	-5.87	102.60	107.30
1	C	197	GLN	CA-CB-CG	-5.85	100.53	113.40
1	E	234	TRP	CE2-CD2-CG	-5.83	102.64	107.30
2	B	92	TRP	CG-CD1-NE1	-5.81	104.29	110.10
2	B	132	GLU	CA-CB-CG	-5.80	100.64	113.40
2	D	132	GLU	CA-CB-CG	-5.80	100.65	113.40
1	C	153	TRP	CE2-CD2-CG	-5.77	102.69	107.30
1	E	255	ARG	NE-CZ-NH1	-5.75	117.42	120.30
1	E	127	TRP	CG-CD1-NE1	-5.75	104.35	110.10
2	F	132	GLU	CA-CB-CG	-5.74	100.76	113.40
2	F	21	TRP	CE2-CD2-CG	-5.72	102.72	107.30
1	A	269	ARG	NE-CZ-NH1	-5.71	117.44	120.30
2	D	153	ARG	NE-CZ-NH2	5.71	123.16	120.30
1	C	208	ARG	NE-CZ-NH2	5.70	123.15	120.30
1	E	180	TRP	CG-CD1-NE1	-5.68	104.42	110.10
1	A	197	GLN	CA-CB-CG	-5.67	100.92	113.40
1	E	208	ARG	NE-CZ-NH1	-5.67	117.47	120.30
2	F	92	TRP	CG-CD1-NE1	-5.67	104.43	110.10
1	E	321	ARG	NE-CZ-NH2	5.66	123.13	120.30
2	D	94	TYR	CB-CG-CD1	-5.65	117.61	121.00
1	A	28	THR	CA-CB-OG1	-5.65	97.14	109.00
1	A	180	TRP	CG-CD1-NE1	-5.64	104.46	110.10
1	E	153	TRP	CE2-CD2-CG	-5.60	102.82	107.30
1	A	127	TRP	CG-CD1-NE1	-5.58	104.52	110.10
1	C	180	TRP	CG-CD2-CE3	5.55	138.90	133.90
1	C	180	TRP	CG-CD1-NE1	-5.55	104.55	110.10

Continued on next page...

Continued from previous page...

Mol	Chain	Res	Type	Atoms	Z	Observed(°)	Ideal(°)
1	C	229	ARG	NE-CZ-NH2	5.52	123.06	120.30
2	D	14	TRP	CG-CD1-NE1	-5.52	104.58	110.10
1	E	197	GLN	CA-CB-CG	-5.52	101.26	113.40
2	D	79	ASP	CA-CB-CG	5.51	125.52	113.40
1	A	180	TRP	CB-CG-CD1	-5.49	119.86	127.00
1	E	153	TRP	CG-CD1-NE1	-5.47	104.63	110.10
1	A	261	ARG	NE-CZ-NH2	5.46	123.03	120.30
2	F	162	TYR	CB-CG-CD2	-5.43	117.74	121.00
1	A	180	TRP	CG-CD2-CE3	5.41	138.77	133.90
1	E	271	ASP	CB-CG-OD2	5.41	123.17	118.30
1	C	180	TRP	CB-CG-CD1	-5.40	119.98	127.00
2	F	94	TYR	CB-CG-CD1	-5.40	117.76	121.00
1	A	255	ARG	NE-CZ-NH1	-5.38	117.61	120.30
2	F	14	TRP	CG-CD2-CE3	5.37	138.74	133.90
2	F	79	ASP	CA-CB-CG	5.36	125.18	113.40
2	B	79	ASP	CA-CB-CG	5.33	125.14	113.40
1	A	26	VAL	N-CA-CB	-5.32	99.79	111.50
2	F	52	LEU	CB-CG-CD2	-5.31	101.98	111.00
2	F	110	LEU	CA-CB-CG	5.31	127.50	115.30
2	D	141	TYR	CB-CG-CD2	-5.28	117.83	121.00
2	D	162	TYR	CB-CG-CD2	-5.28	117.83	121.00
1	E	271	ASP	CB-CG-OD1	-5.26	113.56	118.30
2	B	54	ARG	NE-CZ-NH2	5.25	122.93	120.30
1	A	261	ARG	NE-CZ-NH1	-5.24	117.68	120.30
1	C	84	TRP	CG-CD1-NE1	-5.20	104.90	110.10
2	F	145	ASP	CB-CG-OD1	5.20	122.98	118.30
1	E	22	ASN	CA-C-N	5.19	126.59	116.20
1	A	271	ASP	CB-CG-OD2	5.19	122.97	118.30
1	C	153	TRP	CG-CD1-NE1	-5.19	104.91	110.10
1	A	229	ARG	NE-CZ-NH1	-5.18	117.71	120.30
2	B	14	TRP	CG-CD2-CE3	5.18	138.56	133.90
2	B	52	LEU	CB-CG-CD2	-5.18	102.19	111.00
1	E	26	VAL	N-CA-CB	-5.16	100.16	111.50
2	F	127	ARG	CG-CD-NE	-5.15	100.98	111.80
2	F	57	GLU	OE1-CD-OE2	-5.14	117.13	123.30
1	C	22	ASN	CA-C-N	5.13	126.46	116.20
2	D	79	ASP	CB-CG-OD1	5.10	122.89	118.30
2	B	94	TYR	CB-CG-CD1	-5.09	117.94	121.00
1	C	28	THR	CA-CB-OG1	-5.09	98.31	109.00
2	D	54	ARG	NE-CZ-NH2	5.09	122.84	120.30
2	B	110	LEU	CB-CG-CD1	-5.08	102.36	111.00
1	A	325	GLU	CA-CB-CG	5.08	124.58	113.40

Continued on next page...

Continued from previous page...

Mol	Chain	Res	Type	Atoms	Z	Observed($^{\circ}$)	Ideal($^{\circ}$)
1	E	84	TRP	CG-CD1-NE1	-5.08	105.02	110.10
1	A	22	ASN	CA-C-N	5.06	126.32	116.20
2	D	52	LEU	CB-CG-CD2	-5.04	102.43	111.00
2	D	110	LEU	CA-CB-CG	5.02	126.85	115.30

There are no chirality outliers.

There are no planarity outliers.

5.2 Too-close contacts [i](#)

In the following table, the Non-H and H(model) columns list the number of non-hydrogen atoms and hydrogen atoms in the chain respectively. The H(added) column lists the number of hydrogen atoms added and optimized by MolProbity. The Clashes column lists the number of clashes within the asymmetric unit, whereas Symm-Clashes lists symmetry related clashes.

Mol	Chain	Non-H	H(model)	H(added)	Clashes	Symm-Clashes
1	A	2533	0	2470	38	0
1	C	2533	0	2470	44	0
1	E	2533	0	2470	36	0
2	B	1421	0	1345	22	0
2	D	1421	0	1345	18	0
2	F	1421	0	1345	25	0
3	G	39	0	34	0	0
3	H	39	0	34	0	0
3	I	39	0	34	0	0
4	A	42	0	39	0	0
4	B	14	0	13	0	0
4	C	42	0	39	0	0
4	D	14	0	13	0	0
4	E	42	0	39	0	0
4	F	14	0	13	0	0
5	A	6	0	0	0	0
5	B	5	0	0	0	0
5	C	6	0	0	0	0
5	D	5	0	0	0	0
5	E	6	0	0	0	0
5	F	5	0	0	0	0
All	All	12180	0	11703	145	0

The all-atom clashscore is defined as the number of clashes found per 1000 atoms (including hydrogen atoms). The all-atom clashscore for this structure is 6.

All (145) close contacts within the same asymmetric unit are listed below, sorted by their clash magnitude.

Atom-1	Atom-2	Interatomic distance (Å)	Clash overlap (Å)
1:E:324:PRO:HG2	1:E:327:GLN:HA	1.63	0.81
1:A:53:ASN:OD1	1:A:276:THR:HA	1.93	0.68
1:E:53:ASN:OD1	1:E:276:THR:HA	1.95	0.67
1:C:77:ASP:O	1:C:80:GLN:HG3	1.94	0.67
1:C:53:ASN:OD1	1:C:276:THR:HA	1.94	0.66
1:C:216:ASN:HB3	1:E:212:THR:HG21	1.78	0.65
1:E:77:ASP:O	1:E:80:GLN:HG3	1.96	0.65
1:A:160:THR:HA	1:A:196:VAL:HG21	1.80	0.63
1:E:67:ILE:HD12	1:E:108:LEU:HD13	1.80	0.63
1:A:1:GLN:N	2:F:175:GLY:HA3	2.13	0.63
2:B:132:GLU:HG2	2:B:134:GLY:H	1.64	0.62
1:A:77:ASP:O	1:A:80:GLN:HG3	1.98	0.62
2:F:132:GLU:HG2	2:F:134:GLY:H	1.65	0.61
1:C:161:TYR:HB3	1:C:197:GLN:NE2	2.16	0.60
1:C:67:ILE:HD12	1:C:108:LEU:HD13	1.84	0.60
2:D:28:ASN:HB2	2:D:144:CYS:O	2.02	0.60
2:B:175:GLY:HA3	1:C:1:GLN:N	2.17	0.59
2:D:132:GLU:HG2	2:D:134:GLY:H	1.67	0.59
1:A:67:ILE:HD12	1:A:108:LEU:HD13	1.85	0.59
1:A:222:TRP:CZ2	1:A:225:GLY:HA2	2.38	0.58
1:C:50:LYS:HD2	1:C:273:PRO:HG2	1.85	0.58
1:E:15:LEU:HD22	2:F:119:PHE:HA	1.86	0.58
1:E:50:LYS:HD2	1:E:273:PRO:HG2	1.86	0.57
1:C:222:TRP:CZ2	1:C:225:GLY:HA2	2.39	0.57
1:E:222:TRP:CZ2	1:E:225:GLY:HA2	2.40	0.57
1:E:222:TRP:CE2	1:E:225:GLY:HA2	2.40	0.56
1:C:222:TRP:CE2	1:C:225:GLY:HA2	2.41	0.56
1:A:222:TRP:CE2	1:A:225:GLY:HA2	2.41	0.55
1:A:50:LYS:HD2	1:A:273:PRO:HG2	1.87	0.55
1:A:15:LEU:HD22	2:B:119:PHE:HA	1.89	0.55
2:B:141:TYR:O	2:B:166:ALA:HA	2.06	0.55
1:E:10:THR:HG22	2:F:141:TYR:HA	1.89	0.55
1:A:10:THR:HG22	2:B:141:TYR:HA	1.88	0.54
2:B:127:ARG:NH2	2:F:131:GLU:OE1	2.40	0.54
1:A:216:ASN:HB3	1:C:212:THR:HG21	1.89	0.54
1:C:161:TYR:HB3	1:C:197:GLN:HE22	1.72	0.53
1:E:28:THR:HG23	2:F:105:GLN:OE1	2.08	0.53
2:D:141:TYR:O	2:D:166:ALA:HA	2.09	0.53
1:A:212:THR:HG21	1:E:216:ASN:HB3	1.90	0.53
1:C:15:LEU:HD22	2:D:119:PHE:HA	1.90	0.52

Continued on next page...

Continued from previous page...

Atom-1	Atom-2	Interatomic distance (Å)	Clash overlap (Å)
1:E:56:HIS:ND1	1:E:264:LYS:NZ	2.57	0.52
2:F:141:TYR:O	2:F:166:ALA:HA	2.10	0.51
1:C:54:ASN:O	1:C:278:ILE:HA	2.11	0.51
1:C:10:THR:HG22	2:D:141:TYR:HA	1.93	0.51
1:C:56:HIS:ND1	1:C:264:LYS:NZ	2.59	0.50
1:C:207:ARG:HG2	1:C:241:ASP:OD1	2.11	0.50
1:C:28:THR:HG23	2:D:105:GLN:OE1	2.12	0.50
1:E:207:ARG:HG2	1:E:241:ASP:OD1	2.10	0.50
1:C:220:ARG:HD3	1:C:229:ARG:HG2	1.94	0.50
1:A:207:ARG:HG2	1:A:241:ASP:OD1	2.11	0.50
1:A:56:HIS:ND1	1:A:264:LYS:NZ	2.59	0.50
1:A:54:ASN:O	1:A:278:ILE:HA	2.12	0.50
1:E:220:ARG:HD3	1:E:229:ARG:HG2	1.94	0.49
2:B:131:GLU:OE1	2:D:127:ARG:NH2	2.45	0.49
1:E:156:LYS:HD3	1:E:158:GLY:O	2.13	0.49
1:C:309:VAL:HG22	2:D:93:SER:HA	1.94	0.49
2:D:87:THR:HG21	2:F:88:LYS:HD2	1.95	0.49
1:A:309:VAL:HG22	2:B:93:SER:HA	1.94	0.48
2:F:58:LYS:HE2	2:F:59:THR:O	2.12	0.48
2:B:14:TRP:CZ2	2:B:25:ARG:HD3	2.49	0.48
1:C:133:ASN:H	1:C:152:ASN:ND2	2.12	0.48
1:E:54:ASN:O	1:E:278:ILE:HA	2.13	0.48
2:D:58:LYS:HE2	2:D:59:THR:O	2.14	0.48
1:A:220:ARG:HD3	1:A:229:ARG:HG2	1.96	0.48
2:B:58:LYS:HE2	2:B:59:THR:O	2.13	0.47
1:C:136:SER:C	1:C:145:SER:HB2	2.34	0.47
1:A:136:SER:C	1:A:145:SER:HB2	2.34	0.47
1:A:52:CYS:HB3	1:A:277:CYS:O	2.14	0.47
1:C:325:GLU:HB2	2:D:12:ASN:ND2	2.29	0.47
1:E:206:THR:HA	1:E:242:VAL:O	2.14	0.47
1:E:136:SER:C	1:E:145:SER:HB2	2.35	0.47
1:E:52:CYS:HB3	1:E:277:CYS:O	2.15	0.47
1:C:206:THR:HA	1:C:242:VAL:O	2.15	0.47
1:C:52:CYS:HB3	1:C:277:CYS:O	2.13	0.47
1:C:15:LEU:HD11	2:D:122:THR:HG21	1.97	0.47
1:A:1:GLN:H2	2:F:175:GLY:HA3	1.77	0.46
1:E:309:VAL:HG22	2:F:93:SER:HA	1.96	0.46
1:A:133:ASN:H	1:A:152:ASN:ND2	2.13	0.46
1:A:1:GLN:H1	2:F:175:GLY:HA3	1.78	0.46
1:A:206:THR:HA	1:A:242:VAL:O	2.15	0.45
1:A:15:LEU:HD11	2:B:122:THR:HG21	1.98	0.45

Continued on next page...

Continued from previous page...

Atom-1	Atom-2	Interatomic distance (Å)	Clash overlap (Å)
1:C:321:ARG:HG3	1:C:321:ARG:HH21	1.82	0.45
1:A:28:THR:HG22	1:A:30:THR:H	1.82	0.45
2:F:172:GLN:OE1	2:F:174:LYS:HB3	2.17	0.45
1:E:311:GLN:NE2	2:F:97:GLU:HB2	2.32	0.45
1:A:321:ARG:HG3	1:A:321:ARG:HH21	1.82	0.45
1:E:133:ASN:H	1:E:152:ASN:HD21	1.65	0.45
1:E:15:LEU:HD11	2:F:122:THR:HG21	1.98	0.45
1:A:133:ASN:H	1:A:152:ASN:HD21	1.64	0.45
1:A:28:THR:HG23	2:B:105:GLN:OE1	2.17	0.44
2:B:54:ARG:O	2:B:57:GLU:HB2	2.18	0.44
1:C:43:VAL:HG23	1:C:314:LEU:HB2	1.99	0.44
1:E:321:ARG:HH21	1:E:321:ARG:HG3	1.82	0.44
1:E:89:GLU:OE2	1:E:109:ARG:NH2	2.49	0.44
1:C:133:ASN:H	1:C:152:ASN:HD21	1.63	0.44
1:E:133:ASN:H	1:E:152:ASN:ND2	2.14	0.44
2:B:91:LEU:HD13	2:F:91:LEU:HD13	1.99	0.44
1:A:301:THR:HB	1:A:305:CYS:SG	2.57	0.44
2:B:175:GLY:HA3	1:C:1:GLN:H1	1.82	0.44
1:A:84:TRP:CE2	1:A:116:GLY:HA2	2.53	0.43
1:A:90:ARG:HG3	1:A:92:LYS:HE2	1.99	0.43
1:C:311:GLN:NE2	2:D:97:GLU:HB2	2.34	0.43
2:F:54:ARG:O	2:F:57:GLU:HB2	2.18	0.43
2:D:54:ARG:O	2:D:57:GLU:HB2	2.17	0.43
2:B:175:GLY:HA3	1:C:1:GLN:H2	1.82	0.43
1:C:161:TYR:CE1	1:C:164:LEU:HD22	2.53	0.43
1:C:186:SER:OG	1:C:227:SER:HB2	2.17	0.43
1:C:59:LEU:HD23	1:C:87:PHE:CD1	2.53	0.43
1:E:43:VAL:HG23	1:E:314:LEU:HB2	2.00	0.43
1:A:89:GLU:OE2	1:A:109:ARG:NH2	2.51	0.43
1:C:14:CYS:HA	2:D:137:CYS:HA	2.01	0.43
1:E:14:CYS:HA	2:F:137:CYS:HA	2.01	0.43
1:A:59:LEU:HD23	1:A:87:PHE:CD1	2.54	0.43
1:A:264:LYS:HD2	1:A:302:TYR:OH	2.18	0.43
1:C:216:ASN:HB2	1:C:220:ARG:HH12	1.84	0.42
1:C:90:ARG:HG3	1:C:92:LYS:HE2	2.00	0.42
2:D:106:HIS:CE1	2:D:110:LEU:HD12	2.53	0.42
2:D:163:ARG:O	2:D:167:LEU:HB2	2.19	0.42
1:E:230:ILE:HD13	1:E:230:ILE:HG21	1.84	0.42
2:B:164:ASP:OD1	2:F:173:ILE:HA	2.19	0.42
1:E:216:ASN:HB2	1:E:220:ARG:HH12	1.84	0.42
1:C:28:THR:HG22	1:C:30:THR:H	1.84	0.42

Continued on next page...

Continued from previous page...

Atom-1	Atom-2	Interatomic distance (Å)	Clash overlap (Å)
2:F:26:HIS:O	2:F:32:THR:HA	2.20	0.42
2:B:106:HIS:CE1	2:B:110:LEU:HD12	2.55	0.42
1:E:264:LYS:HD2	1:E:302:TYR:OH	2.20	0.42
1:A:14:CYS:HA	2:B:137:CYS:HA	2.02	0.42
1:E:175:ASP:OD2	1:E:239:PRO:HD3	2.20	0.42
1:C:84:TRP:CE2	1:C:116:GLY:HA2	2.55	0.42
1:C:161:TYR:HD1	1:C:162:PRO:O	2.02	0.41
2:F:163:ARG:O	2:F:167:LEU:HB2	2.20	0.41
1:C:184:HIS:ND1	1:C:216:ASN:N	2.67	0.41
2:F:106:HIS:CE1	2:F:110:LEU:HD12	2.55	0.41
2:B:14:TRP:CH2	2:B:25:ARG:HD3	2.56	0.41
1:E:84:TRP:CE2	1:E:116:GLY:HA2	2.56	0.41
1:A:311:GLN:NE2	2:B:97:GLU:HB2	2.36	0.41
1:A:202:VAL:O	1:A:212:THR:HA	2.21	0.41
2:B:110:LEU:O	2:B:113:SER:HB3	2.21	0.41
1:C:301:THR:HB	1:C:305:CYS:SG	2.60	0.41
1:A:109:ARG:HH21	1:A:109:ARG:HD2	1.64	0.40
1:C:161:TYR:HE1	1:C:164:LEU:HD22	1.87	0.40
2:D:91:LEU:HD13	2:F:91:LEU:HD13	2.02	0.40
1:C:295:GLN:O	1:C:308:TYR:HA	2.22	0.40
1:E:323:VAL:HG21	2:F:7:ALA:HB2	2.03	0.40
1:E:28:THR:HG22	1:E:30:THR:H	1.85	0.40
2:F:110:LEU:O	2:F:113:SER:HB3	2.21	0.40

There are no symmetry-related clashes.

5.3 Torsion angles [i](#)

5.3.1 Protein backbone [i](#)

In the following table, the Percentiles column shows the percent Ramachandran outliers of the chain as a percentile score with respect to all X-ray entries followed by that with respect to entries of similar resolution.

The Analysed column shows the number of residues for which the backbone conformation was analysed, and the total number of residues.

Mol	Chain	Analysed	Favoured	Allowed	Outliers	Percentiles
1	A	326/328 (99%)	312 (96%)	11 (3%)	3 (1%)	17 48
1	C	326/328 (99%)	315 (97%)	8 (2%)	3 (1%)	17 48

Continued on next page...

Continued from previous page...

Mol	Chain	Analysed	Favoured	Allowed	Outliers	Percentiles	
1	E	326/328 (99%)	313 (96%)	10 (3%)	3 (1%)	17	48
2	B	173/175 (99%)	163 (94%)	10 (6%)	0	100	100
2	D	173/175 (99%)	163 (94%)	10 (6%)	0	100	100
2	F	173/175 (99%)	163 (94%)	10 (6%)	0	100	100
All	All	1497/1509 (99%)	1429 (96%)	59 (4%)	9 (1%)	25	58

All (9) Ramachandran outliers are listed below:

Mol	Chain	Res	Type
1	C	327	GLN
1	A	62	ILE
1	C	62	ILE
1	E	62	ILE
1	E	158	GLY
1	A	327	GLN
1	A	22	ASN
1	C	22	ASN
1	E	22	ASN

5.3.2 Protein sidechains [i](#)

In the following table, the Percentiles column shows the percent sidechain outliers of the chain as a percentile score with respect to all X-ray entries followed by that with respect to entries of similar resolution.

The Analysed column shows the number of residues for which the sidechain conformation was analysed, and the total number of residues.

Mol	Chain	Analysed	Rotameric	Outliers	Percentiles	
1	A	289/289 (100%)	260 (90%)	29 (10%)	7	23
1	C	289/289 (100%)	254 (88%)	35 (12%)	5	15
1	E	289/289 (100%)	255 (88%)	34 (12%)	5	16
2	B	149/149 (100%)	137 (92%)	12 (8%)	11	33
2	D	149/149 (100%)	135 (91%)	14 (9%)	8	26
2	F	149/149 (100%)	136 (91%)	13 (9%)	10	30
All	All	1314/1314 (100%)	1177 (90%)	137 (10%)	7	21

All (137) residues with a non-rotameric sidechain are listed below:

Mol	Chain	Res	Type
1	A	13	LEU
1	A	18	HIS
1	A	26	VAL
1	A	28	THR
1	A	29	ILE
1	A	37	THR
1	A	83	THR
1	A	92	LYS
1	A	95	SER
1	A	108	LEU
1	A	118	LEU
1	A	150	ARG
1	A	152	ASN
1	A	154	LEU
1	A	155	THR
1	A	164	LEU
1	A	188	ASN
1	A	205	SER
1	A	210	GLN
1	A	228	SER
1	A	242	VAL
1	A	251	LEU
1	A	264	LYS
1	A	278	ILE
1	A	283	THR
1	A	299	LYS
1	A	309	VAL
1	A	321	ARG
1	A	328	THR
2	B	25	ARG
2	B	38	LEU
2	B	56	ILE
2	B	72	GLU
2	B	118	LEU
2	B	127	ARG
2	B	160	ASP
2	B	162	TYR
2	B	163	ARG
2	B	169	ASN
2	B	172	GLN
2	B	174	LYS
1	C	13	LEU
1	C	18	HIS

Continued on next page...

Continued from previous page...

Mol	Chain	Res	Type
1	C	25	LEU
1	C	26	VAL
1	C	28	THR
1	C	29	ILE
1	C	37	THR
1	C	83	THR
1	C	92	LYS
1	C	95	SER
1	C	108	LEU
1	C	118	LEU
1	C	150	ARG
1	C	152	ASN
1	C	154	LEU
1	C	155	THR
1	C	156	LYS
1	C	160	THR
1	C	164	LEU
1	C	188	ASN
1	C	189	GLN
1	C	205	SER
1	C	210	GLN
1	C	228	SER
1	C	242	VAL
1	C	251	LEU
1	C	264	LYS
1	C	265	SER
1	C	278	ILE
1	C	283	THR
1	C	299	LYS
1	C	309	VAL
1	C	321	ARG
1	C	324	PRO
1	C	327	GLN
2	D	11	GLU
2	D	28	ASN
2	D	29	SER
2	D	38	LEU
2	D	56	ILE
2	D	72	GLU
2	D	77	ILE
2	D	118	LEU
2	D	127	ARG

Continued on next page...

Continued from previous page...

Mol	Chain	Res	Type
2	D	160	ASP
2	D	163	ARG
2	D	169	ASN
2	D	172	GLN
2	D	174	LYS
1	E	13	LEU
1	E	18	HIS
1	E	26	VAL
1	E	28	THR
1	E	29	ILE
1	E	37	THR
1	E	83	THR
1	E	92	LYS
1	E	95	SER
1	E	108	LEU
1	E	118	LEU
1	E	150	ARG
1	E	152	ASN
1	E	154	LEU
1	E	155	THR
1	E	156	LYS
1	E	157	SER
1	E	160	THR
1	E	161	TYR
1	E	164	LEU
1	E	188	ASN
1	E	205	SER
1	E	210	GLN
1	E	228	SER
1	E	242	VAL
1	E	251	LEU
1	E	264	LYS
1	E	278	ILE
1	E	283	THR
1	E	299	LYS
1	E	309	VAL
1	E	321	ARG
1	E	324	PRO
1	E	325	GLU
2	F	11	GLU
2	F	28	ASN
2	F	38	LEU

Continued on next page...

Continued from previous page...

Mol	Chain	Res	Type
2	F	56	ILE
2	F	72	GLU
2	F	118	LEU
2	F	127	ARG
2	F	160	ASP
2	F	162	TYR
2	F	163	ARG
2	F	169	ASN
2	F	172	GLN
2	F	174	LYS

Some sidechains can be flipped to improve hydrogen bonding and reduce clashes. All (14) such sidechains are listed below:

Mol	Chain	Res	Type
1	A	132	GLN
1	A	152	ASN
1	A	171	ASN
2	B	27	GLN
1	C	132	GLN
1	C	152	ASN
1	C	171	ASN
1	C	197	GLN
1	C	327	GLN
2	D	12	ASN
1	E	132	GLN
1	E	152	ASN
1	E	171	ASN
1	E	197	GLN

5.3.3 RNA [i](#)

There are no RNA molecules in this entry.

5.4 Non-standard residues in protein, DNA, RNA chains [i](#)

There are no non-standard protein/DNA/RNA residues in this entry.

5.5 Carbohydrates [i](#)

9 monosaccharides are modelled in this entry.

In the following table, the Counts columns list the number of bonds (or angles) for which Mogul statistics could be retrieved, the number of bonds (or angles) that are observed in the model and the number of bonds (or angles) that are defined in the Chemical Component Dictionary. The Link column lists molecule types, if any, to which the group is linked. The Z score for a bond length (or angle) is the number of standard deviations the observed value is removed from the expected value. A bond length (or angle) with $|Z| > 2$ is considered an outlier worth inspection. RMSZ is the root-mean-square of all Z scores of the bond lengths (or angles).

Mol	Type	Chain	Res	Link	Bond lengths			Bond angles		
					Counts	RMSZ	# Z > 2	Counts	RMSZ	# Z > 2
3	NAG	G	1	1,3	14,14,15	0.56	0	17,19,21	1.11	1 (5%)
3	NAG	G	2	3	14,14,15	0.46	0	17,19,21	1.14	2 (11%)
3	BMA	G	3	3	11,11,12	0.58	0	15,15,17	0.92	1 (6%)
3	NAG	H	1	1,3	14,14,15	0.64	0	17,19,21	1.17	1 (5%)
3	NAG	H	2	3	14,14,15	0.39	0	17,19,21	1.17	2 (11%)
3	BMA	H	3	3	11,11,12	0.90	0	15,15,17	1.66	1 (6%)
3	NAG	I	1	1,3	14,14,15	0.72	0	17,19,21	1.11	3 (17%)
3	NAG	I	2	3	14,14,15	0.42	0	17,19,21	1.11	1 (5%)
3	BMA	I	3	3	11,11,12	1.24	1 (9%)	15,15,17	1.65	5 (33%)

In the following table, the Chirals column lists the number of chiral outliers, the number of chiral centers analysed, the number of these observed in the model and the number defined in the Chemical Component Dictionary. Similar counts are reported in the Torsion and Rings columns. '-' means no outliers of that kind were identified.

Mol	Type	Chain	Res	Link	Chirals	Torsions	Rings
3	NAG	G	1	1,3	-	0/6/23/26	0/1/1/1
3	NAG	G	2	3	-	0/6/23/26	0/1/1/1
3	BMA	G	3	3	-	0/2/19/22	0/1/1/1
3	NAG	H	1	1,3	-	0/6/23/26	0/1/1/1
3	NAG	H	2	3	-	0/6/23/26	0/1/1/1
3	BMA	H	3	3	-	0/2/19/22	0/1/1/1
3	NAG	I	1	1,3	-	0/6/23/26	0/1/1/1
3	NAG	I	2	3	-	0/6/23/26	0/1/1/1
3	BMA	I	3	3	-	0/2/19/22	0/1/1/1

All (1) bond length outliers are listed below:

Mol	Chain	Res	Type	Atoms	Z	Observed(Å)	Ideal(Å)
3	I	3	BMA	C4-C3	2.88	1.59	1.52

All (17) bond angle outliers are listed below:

Mol	Chain	Res	Type	Atoms	Z	Observed(°)	Ideal(°)
3	H	3	BMA	C1-O5-C5	5.31	119.38	112.19
3	I	3	BMA	O5-C1-C2	2.98	115.36	110.77
3	I	2	NAG	C4-C3-C2	-2.97	106.67	111.02
3	G	2	NAG	C4-C3-C2	-2.88	106.80	111.02
3	H	2	NAG	C4-C3-C2	-2.83	106.87	111.02
3	I	3	BMA	O5-C5-C6	2.80	111.59	107.20
3	I	3	BMA	O5-C5-C4	-2.73	104.19	110.83
3	I	3	BMA	O2-C2-C1	2.58	114.43	109.15
3	G	1	NAG	C6-C5-C4	-2.56	107.01	113.00
3	H	1	NAG	C6-C5-C4	-2.54	107.05	113.00
3	I	3	BMA	C6-C5-C4	2.50	118.87	113.00
3	I	1	NAG	C2-N2-C7	2.46	126.41	122.90
3	I	1	NAG	C6-C5-C4	-2.16	107.93	113.00
3	H	2	NAG	C1-O5-C5	2.11	115.05	112.19
3	I	1	NAG	C1-O5-C5	2.06	114.99	112.19
3	G	3	BMA	O2-C2-C1	2.04	113.32	109.15
3	G	2	NAG	C1-O5-C5	2.01	114.92	112.19

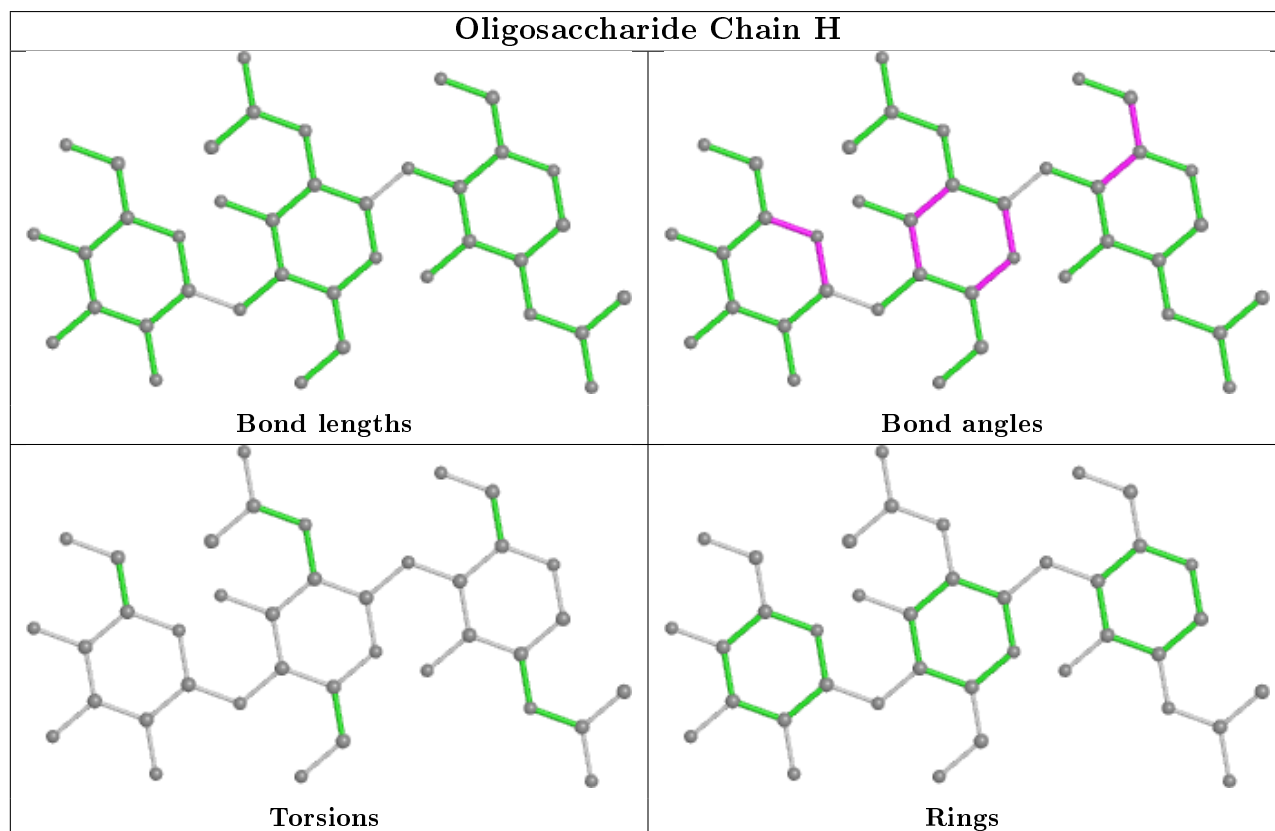
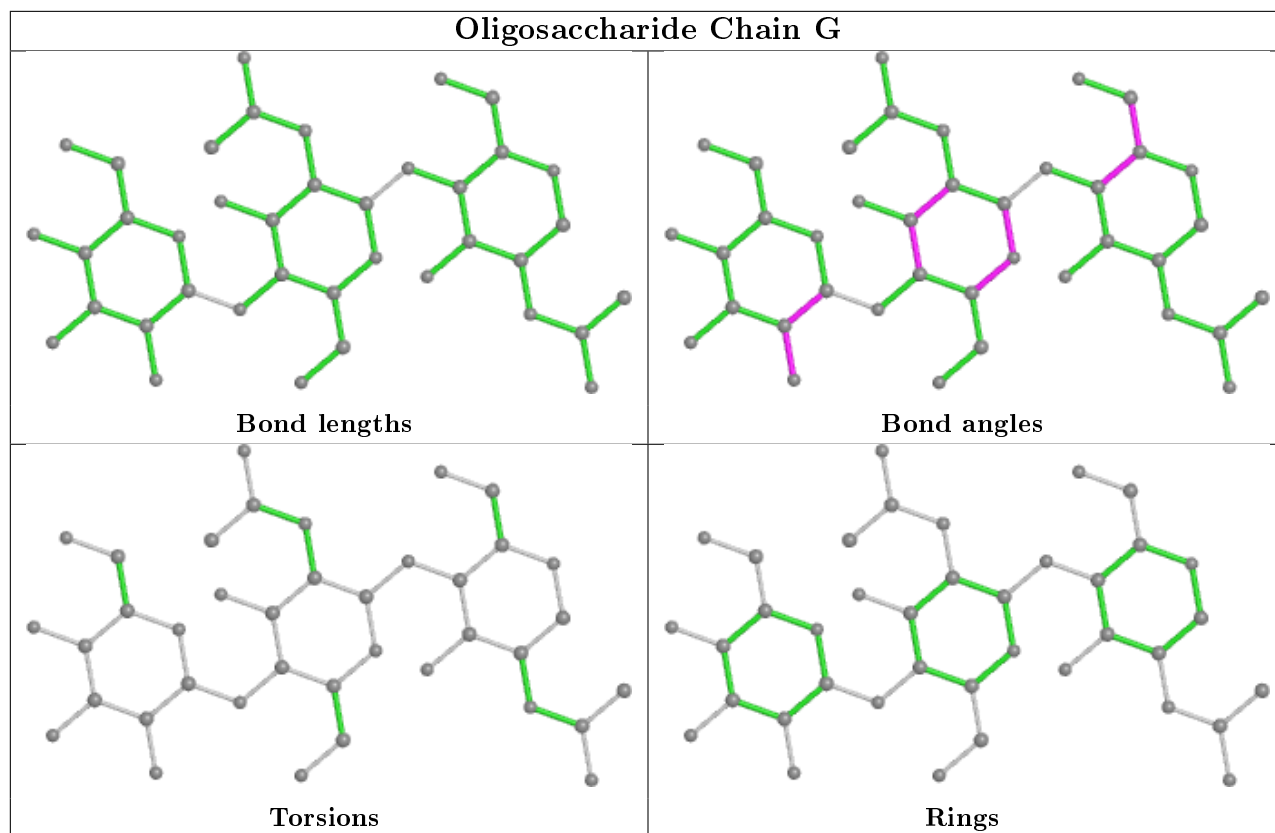
There are no chirality outliers.

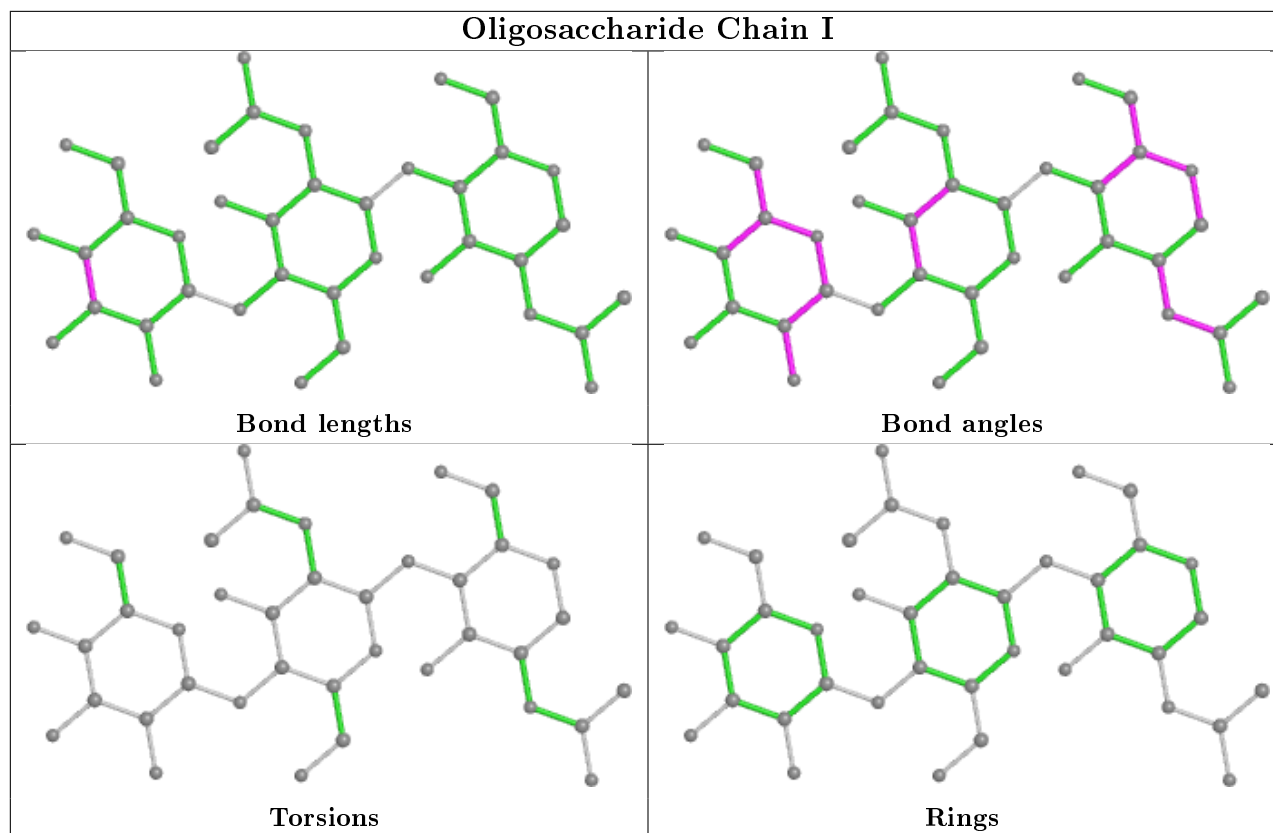
There are no torsion outliers.

There are no ring outliers.

No monomer is involved in short contacts.

The following is a two-dimensional graphical depiction of Mogul quality analysis of bond lengths, bond angles, torsion angles, and ring geometry for oligosaccharide.





5.6 Ligand geometry [i](#)

12 ligands are modelled in this entry.

In the following table, the Counts columns list the number of bonds (or angles) for which Mogul statistics could be retrieved, the number of bonds (or angles) that are observed in the model and the number of bonds (or angles) that are defined in the Chemical Component Dictionary. The Link column lists molecule types, if any, to which the group is linked. The Z score for a bond length (or angle) is the number of standard deviations the observed value is removed from the expected value. A bond length (or angle) with $|Z| > 2$ is considered an outlier worth inspection. RMSZ is the root-mean-square of all Z scores of the bond lengths (or angles).

Mol	Type	Chain	Res	Link	Bond lengths			Bond angles		
					Counts	RMSZ	$\# Z > 2$	Counts	RMSZ	$\# Z > 2$
4	NAG	A	348	1	14,14,15	0.71	0	17,19,21	1.29	2 (11%)
4	NAG	A	329	1	14,14,15	0.91	1 (7%)	17,19,21	0.91	1 (5%)
4	NAG	C	348	1	14,14,15	0.75	0	17,19,21	1.13	1 (5%)
4	NAG	D	401	2	14,14,15	0.44	0	17,19,21	0.90	0
4	NAG	E	334	1	14,14,15	0.87	0	17,19,21	1.39	3 (17%)
4	NAG	C	334	1	14,14,15	0.92	0	17,19,21	1.42	3 (17%)
4	NAG	E	348	1	14,14,15	0.82	0	17,19,21	1.16	1 (5%)
4	NAG	E	329	1	14,14,15	0.79	0	17,19,21	0.95	1 (5%)

Mol	Type	Chain	Res	Link	Bond lengths			Bond angles		
					Counts	RMSZ	# Z > 2	Counts	RMSZ	# Z > 2
4	NAG	C	329	1	14,14,15	0.76	1 (7%)	17,19,21	0.93	1 (5%)
4	NAG	A	334	1	14,14,15	0.93	0	17,19,21	1.44	3 (17%)
4	NAG	B	401	2	14,14,15	0.63	0	17,19,21	0.96	0
4	NAG	F	401	2	14,14,15	0.51	0	17,19,21	0.99	0

In the following table, the Chirals column lists the number of chiral outliers, the number of chiral centers analysed, the number of these observed in the model and the number defined in the Chemical Component Dictionary. Similar counts are reported in the Torsion and Rings columns. '-' means no outliers of that kind were identified.

Mol	Type	Chain	Res	Link	Chirals	Torsions	Rings
4	NAG	A	348	1	-	0/6/23/26	0/1/1/1
4	NAG	A	329	1	-	0/6/23/26	0/1/1/1
4	NAG	C	348	1	-	2/6/23/26	0/1/1/1
4	NAG	D	401	2	-	0/6/23/26	0/1/1/1
4	NAG	E	334	1	-	0/6/23/26	0/1/1/1
4	NAG	C	334	1	-	0/6/23/26	0/1/1/1
4	NAG	E	348	1	-	0/6/23/26	0/1/1/1
4	NAG	E	329	1	-	0/6/23/26	0/1/1/1
4	NAG	C	329	1	-	0/6/23/26	0/1/1/1
4	NAG	A	334	1	-	0/6/23/26	0/1/1/1
4	NAG	B	401	2	-	0/6/23/26	0/1/1/1
4	NAG	F	401	2	-	0/6/23/26	0/1/1/1

All (2) bond length outliers are listed below:

Mol	Chain	Res	Type	Atoms	Z	Observed(Å)	Ideal(Å)
4	A	329	NAG	C4-C5	2.30	1.57	1.53
4	C	329	NAG	C4-C5	2.14	1.57	1.53

All (16) bond angle outliers are listed below:

Mol	Chain	Res	Type	Atoms	Z	Observed(°)	Ideal(°)
4	A	348	NAG	C1-O5-C5	3.46	116.88	112.19
4	E	329	NAG	C1-O5-C5	3.11	116.41	112.19
4	A	334	NAG	C1-O5-C5	2.92	116.14	112.19
4	A	329	NAG	C1-O5-C5	2.89	116.11	112.19
4	E	348	NAG	C1-O5-C5	2.85	116.06	112.19
4	C	329	NAG	C1-O5-C5	2.81	116.00	112.19
4	E	334	NAG	C1-O5-C5	2.64	115.77	112.19
4	C	334	NAG	C1-O5-C5	2.57	115.68	112.19

Continued on next page...

Continued from previous page...

Mol	Chain	Res	Type	Atoms	Z	Observed(°)	Ideal(°)
4	C	348	NAG	C1-O5-C5	2.54	115.64	112.19
4	E	334	NAG	C1-C2-N2	2.44	114.66	110.49
4	A	334	NAG	C2-N2-C7	-2.42	119.45	122.90
4	A	348	NAG	C8-C7-N2	2.26	119.92	116.10
4	A	334	NAG	C1-C2-N2	2.25	114.34	110.49
4	E	334	NAG	C8-C7-N2	2.23	119.88	116.10
4	C	334	NAG	C8-C7-N2	2.20	119.83	116.10
4	C	334	NAG	C1-C2-N2	2.15	114.16	110.49

There are no chirality outliers.

All (2) torsion outliers are listed below:

Mol	Chain	Res	Type	Atoms
4	C	348	NAG	C4-C5-C6-O6
4	C	348	NAG	O5-C5-C6-O6

There are no ring outliers.

No monomer is involved in short contacts.

5.7 Other polymers [i](#)

There are no such residues in this entry.

5.8 Polymer linkage issues [i](#)

There are no chain breaks in this entry.

6 Fit of model and data

6.1 Protein, DNA and RNA chains

In the following table, the column labelled ‘#RSRZ> 2’ contains the number (and percentage) of RSRZ outliers, followed by percent RSRZ outliers for the chain as percentile scores relative to all X-ray entries and entries of similar resolution. The OWAB column contains the minimum, median, 95th percentile and maximum values of the occupancy-weighted average B-factor per residue. The column labelled ‘Q< 0.9’ lists the number of (and percentage) of residues with an average occupancy less than 0.9.

Mol	Chain	Analysed	<RSRZ>	#RSRZ>2	OWAB(Å ²)	Q<0.9
1	A	328/328 (100%)	-0.61	11 (3%) 45 40	5, 23, 53, 141	0
1	C	328/328 (100%)	-0.56	9 (2%) 54 50	5, 24, 48, 145	0
1	E	328/328 (100%)	-0.69	9 (2%) 54 50	4, 23, 50, 143	0
2	B	175/175 (100%)	-0.80	1 (0%) 89 89	3, 18, 48, 97	0
2	D	175/175 (100%)	-0.79	2 (1%) 80 80	3, 18, 47, 98	0
2	F	175/175 (100%)	-0.80	3 (1%) 70 69	3, 18, 48, 98	0
All	All	1509/1509 (100%)	-0.68	35 (2%) 60 58	3, 22, 51, 145	0

All (35) RSRZ outliers are listed below:

Mol	Chain	Res	Type	RSRZ
1	C	6	ASN	8.9
1	E	2	ASP	8.6
1	A	2	ASP	8.5
1	A	4	PRO	8.4
1	C	5	GLY	7.7
1	C	4	PRO	7.3
1	A	8	ASN	6.8
2	D	175	GLY	6.8
1	E	4	PRO	6.4
1	A	5	GLY	6.2
1	A	6	ASN	5.9
1	E	3	LEU	5.7
1	E	6	ASN	5.3
1	A	3	LEU	5.2
1	E	5	GLY	4.9
1	C	8	ASN	4.9
1	C	7	ASP	4.8
2	F	175	GLY	4.7
1	C	1	GLN	4.6

Continued on next page...

Continued from previous page...

Mol	Chain	Res	Type	RSRZ
1	A	328	THR	4.4
1	C	2	ASP	4.3
1	C	328	THR	4.3
1	C	3	LEU	4.3
1	E	8	ASN	4.0
1	A	1	GLN	3.2
1	A	327	GLN	3.2
1	A	326	LYS	3.2
2	F	174	LYS	3.1
1	A	7	ASP	2.8
1	E	1	GLN	2.8
2	D	58	LYS	2.3
1	E	327	GLN	2.3
2	F	173	ILE	2.3
1	E	142	GLY	2.2
2	B	172	GLN	2.0

6.2 Non-standard residues in protein, DNA, RNA chains [i](#)

There are no non-standard protein/DNA/RNA residues in this entry.

6.3 Carbohydrates [i](#)

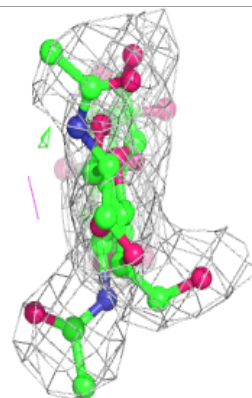
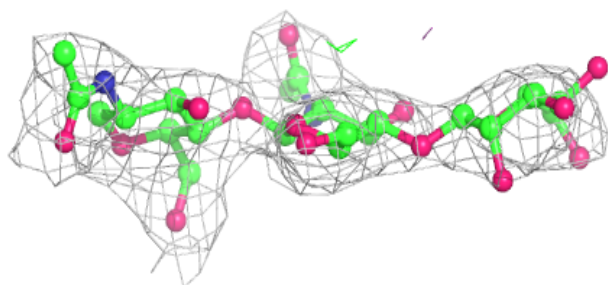
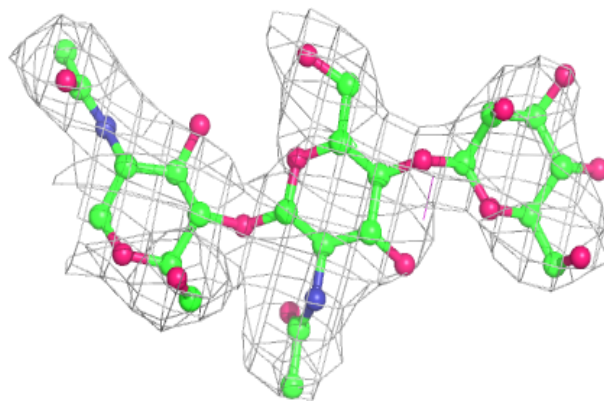
In the following table, the Atoms column lists the number of modelled atoms in the group and the number defined in the chemical component dictionary. The B-factors column lists the minimum, median, 95th percentile and maximum values of B factors of atoms in the group. The column labelled 'Q< 0.9' lists the number of atoms with occupancy less than 0.9.

Mol	Type	Chain	Res	Atoms	RSCC	RSR	B-factors(Å ²)	Q<0.9
3	BMA	I	3	11/12	0.78	0.27	61,63,64,64	0
3	BMA	H	3	11/12	0.83	0.29	61,63,66,66	0
3	NAG	H	1	14/15	0.86	0.22	42,45,48,48	0
3	BMA	G	3	11/12	0.88	0.28	59,61,62,62	0
3	NAG	H	2	14/15	0.89	0.19	51,54,57,58	0
3	NAG	I	2	14/15	0.89	0.21	51,55,56,59	0
3	NAG	G	2	14/15	0.90	0.19	52,54,56,58	0
3	NAG	I	1	14/15	0.93	0.19	41,44,46,48	0
3	NAG	G	1	14/15	0.93	0.15	43,46,47,49	0

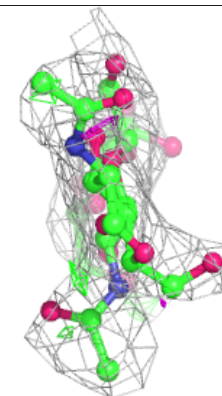
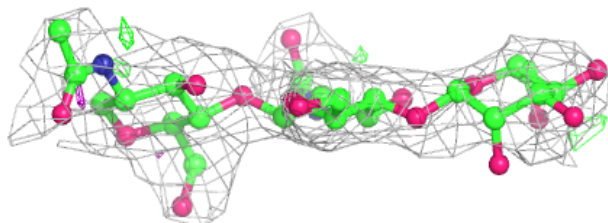
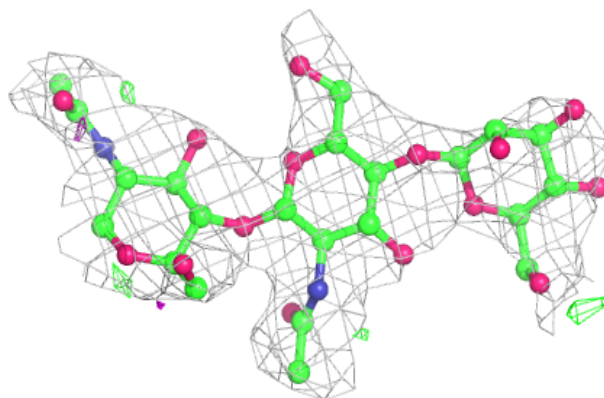
The following is a graphical depiction of the model fit to experimental electron density for oligosaccharide. Each fit is shown from different orientation to approximate a three-dimensional view.

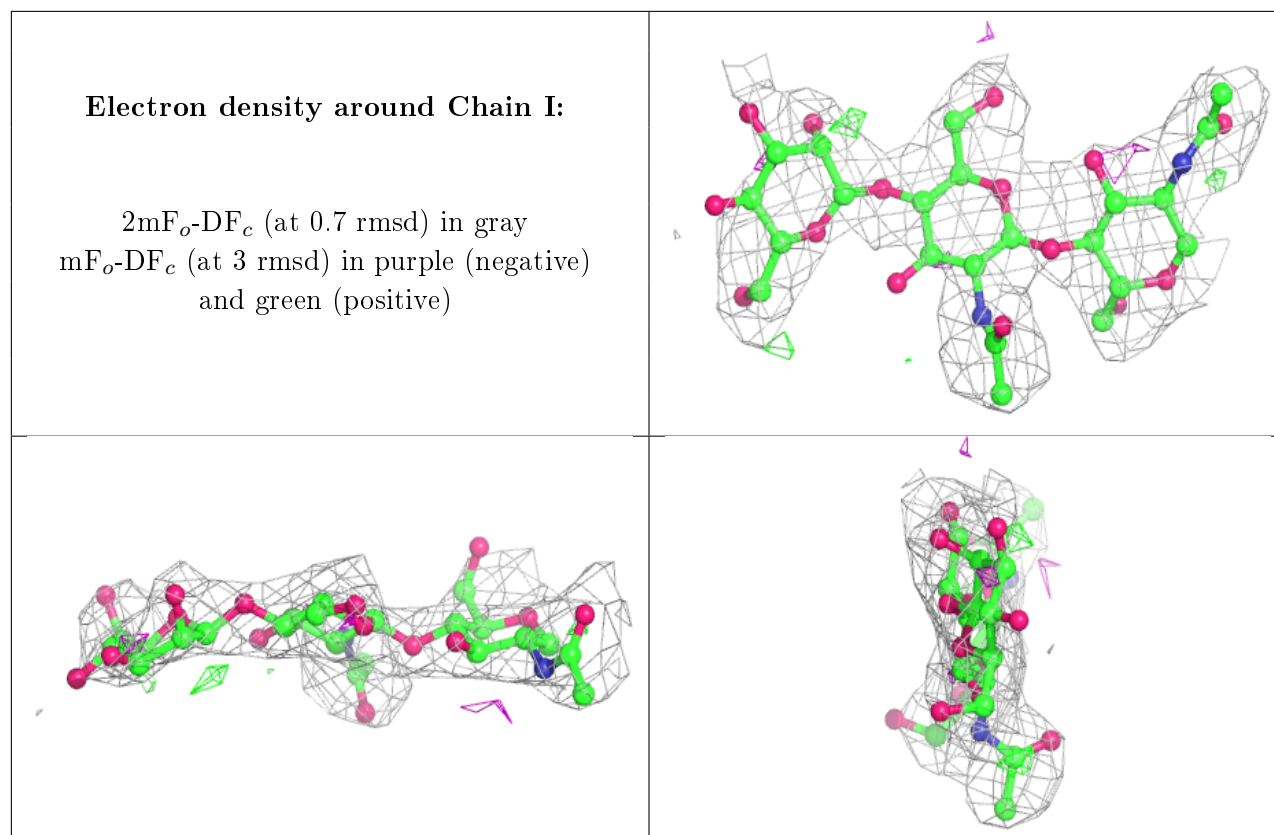
Electron density around Chain G:

$2mF_o-DF_c$ (at 0.7 rmsd) in gray
 mF_o-DF_c (at 3 rmsd) in purple (negative)
and green (positive)

**Electron density around Chain H:**

$2mF_o-DF_c$ (at 0.7 rmsd) in gray
 mF_o-DF_c (at 3 rmsd) in purple (negative)
and green (positive)





6.4 Ligands [\(i\)](#)

In the following table, the Atoms column lists the number of modelled atoms in the group and the number defined in the chemical component dictionary. The B-factors column lists the minimum, median, 95th percentile and maximum values of B factors of atoms in the group. The column labelled 'Q< 0.9' lists the number of atoms with occupancy less than 0.9.

Mol	Type	Chain	Res	Atoms	RSCC	RSR	B-factors(Å ²)	Q<0.9
4	NAG	F	401	14/15	0.85	0.25	49,52,54,55	0
4	NAG	D	401	14/15	0.86	0.27	50,53,55,56	0
4	NAG	A	334	14/15	0.86	0.20	35,39,41,41	0
4	NAG	B	401	14/15	0.86	0.25	50,54,55,56	0
4	NAG	E	348	14/15	0.88	0.21	34,38,40,42	0
4	NAG	C	348	14/15	0.89	0.26	35,39,41,43	0
4	NAG	A	348	14/15	0.89	0.20	34,38,40,41	0
4	NAG	E	329	14/15	0.90	0.21	38,42,43,45	0
4	NAG	A	329	14/15	0.90	0.22	38,42,43,44	0
4	NAG	C	329	14/15	0.90	0.20	38,42,43,44	0
4	NAG	C	334	14/15	0.91	0.18	36,39,42,42	0
4	NAG	E	334	14/15	0.93	0.19	36,39,41,41	0

6.5 Other polymers [i](#)

There are no such residues in this entry.