



Full wwPDB X-ray Structure Validation Report ⓘ

May 13, 2020 – 10:47 pm BST

PDB ID : 4HMA
Title : Crystal structure of an MMP twin carboxylate based inhibitor LC20 in complex with the MMP-9 catalytic domain
Authors : Stura, E.A.; Antoni, C.; Vera, L.; Nuti, E.; Carafa, L.; Cassar-Lajeunesse, E.; Dive, V.; Rossello, A.
Deposited on : 2012-10-18
Resolution : 1.94 Å(reported)

This is a Full wwPDB X-ray Structure Validation Report for a publicly released PDB entry.

We welcome your comments at validation@mail.wwpdb.org

A user guide is available at

<https://www.wwpdb.org/validation/2017/XrayValidationReportHelp>

with specific help available everywhere you see the ⓘ symbol.

The following versions of software and data (see [references ⓘ](#)) were used in the production of this report:

MolProbity : 4.02b-467
Mogul : 1.8.5 (274361), CSD as541be (2020)
Xtriage (Phenix) : 1.13
EDS : 2.11
buster-report : 1.1.7 (2018)
Percentile statistics : 20191225.v01 (using entries in the PDB archive December 25th 2019)
Refmac : 5.8.0158
CCP4 : 7.0.044 (Gargrove)
Ideal geometry (proteins) : Engh & Huber (2001)
Ideal geometry (DNA, RNA) : Parkinson et al. (1996)
Validation Pipeline (wwPDB-VP) : 2.11

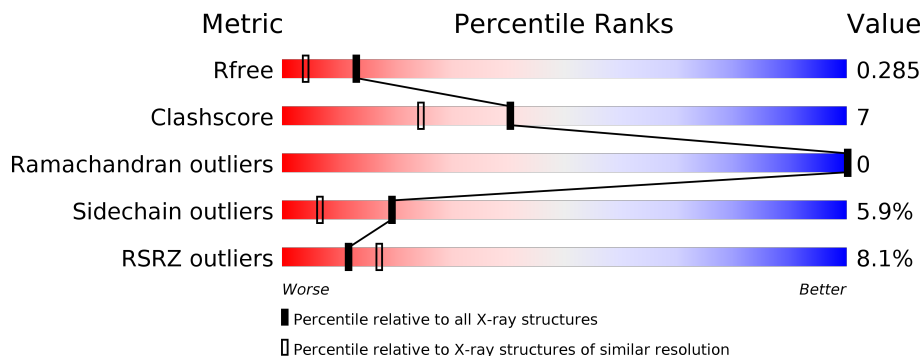
1 Overall quality at a glance

The following experimental techniques were used to determine the structure:

X-RAY DIFFRACTION

The reported resolution of this entry is 1.94 Å.

Percentile scores (ranging between 0-100) for global validation metrics of the entry are shown in the following graphic. The table shows the number of entries on which the scores are based.



Metric	Whole archive (#Entries)	Similar resolution (#Entries, resolution range(Å))
R_{free}	130704	4310 (1.96-1.92)
Clashscore	141614	1023 (1.94-1.94)
Ramachandran outliers	138981	1007 (1.94-1.94)
Sidechain outliers	138945	1007 (1.94-1.94)
RSRZ outliers	127900	4250 (1.96-1.92)

The table below summarises the geometric issues observed across the polymeric chains and their fit to the electron density. The red, orange, yellow and green segments on the lower bar indicate the fraction of residues that contain outliers for ≥ 3 , 2, 1 and 0 types of geometric quality criteria respectively. A grey segment represents the fraction of residues that are not modelled. The numeric value for each fraction is indicated below the corresponding segment, with a dot representing fractions $\leq 5\%$. The upper red bar (where present) indicates the fraction of residues that have poor fit to the electron density. The numeric value is given above the bar.

Mol	Chain	Length	Quality of chain
1	A	160	
1	B	160	

The following table lists non-polymeric compounds, carbohydrate monomers and non-standard residues in protein, DNA, RNA chains that are outliers for geometric or electron-density-fit criteria:

Mol	Type	Chain	Res	Chirality	Geometry	Clashes	Electron density
7	PEG	A	313	-	-	-	X

2 Entry composition i

There are 9 unique types of molecules in this entry. The entry contains 3141 atoms, of which 0 are hydrogens and 0 are deuteriums.

In the tables below, the ZeroOcc column contains the number of atoms modelled with zero occupancy, the AltConf column contains the number of residues with at least one atom in alternate conformation and the Trace column contains the number of residues modelled with at most 2 atoms.

- Molecule 1 is a protein called Matrix metalloproteinase-9.

Mol	Chain	Residues	Atoms					ZeroOcc	AltConf	Trace
			Total	C	N	O	S			
1	A	160	1313	845	224	242	2	0	5	0
1	B	160	1293	834	219	238	2	0	2	0

There are 2 discrepancies between the modelled and reference sequences:

Chain	Residue	Modelled	Actual	Comment	Reference
A	227	GLN	GLU	ENGINEERED MUTATION	UNP P14780
B	227	GLN	GLU	ENGINEERED MUTATION	UNP P14780

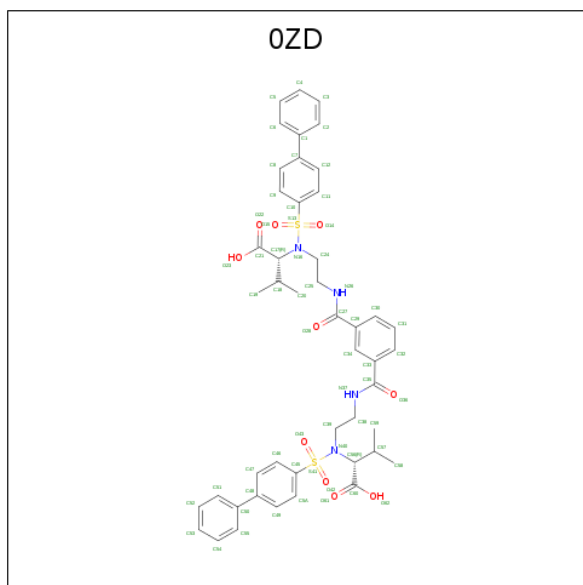
- Molecule 2 is ZINC ION (three-letter code: ZN) (formula: Zn).

Mol	Chain	Residues	Atoms		ZeroOcc	AltConf
2	B	2	Total	Zn	0	0
			2	2		
2	A	2	Total	Zn	0	0
			2	2		

- Molecule 3 is CALCIUM ION (three-letter code: CA) (formula: Ca).

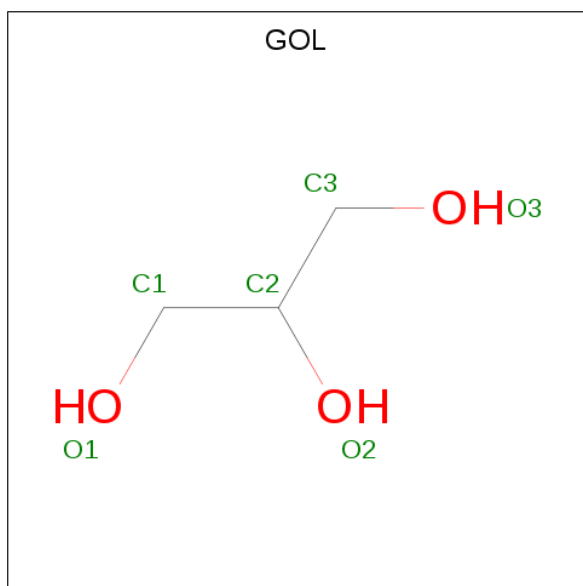
Mol	Chain	Residues	Atoms		ZeroOcc	AltConf
3	B	3	Total	Ca	0	0
			3	3		
3	A	3	Total	Ca	0	0
			3	3		

- Molecule 4 is N,N'-bis(2-[(biphenyl-4ylsulfonyl)](2R)-1-hydroxy-3-methyl-1-oxobutan-2-yl]-amino)ethyl)benzene-1,3-dicarboxamide (three-letter code: 0ZD) (formula: C₄₆H₅₀N₄O₁₀S₂).



Mol	Chain	Residues	Atoms					ZeroOcc	AltConf
			Total	C	N	O	S		
4	A	1	62	46	4	10	2	0	0

- Molecule 5 is GLYCEROL (three-letter code: GOL) (formula: C₃H₈O₃).



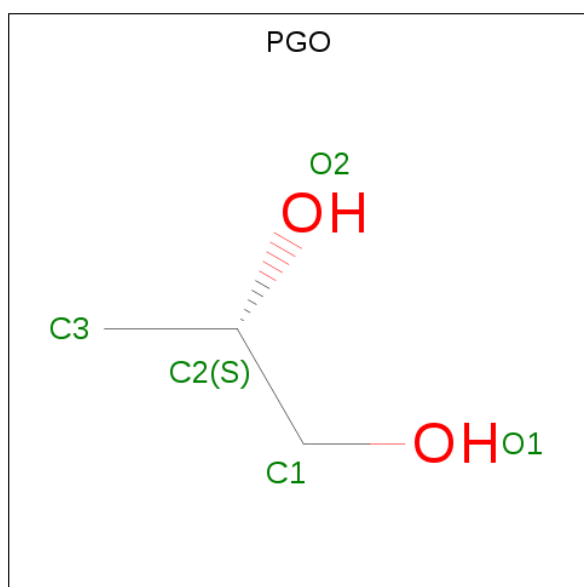
Mol	Chain	Residues	Atoms			ZeroOcc	AltConf
			Total	C	O		
5	A	1	6	3	3	0	0
5	A	1	6	3	3	0	0
5	A	1	6	3	3	0	0

Continued on next page...

Continued from previous page...

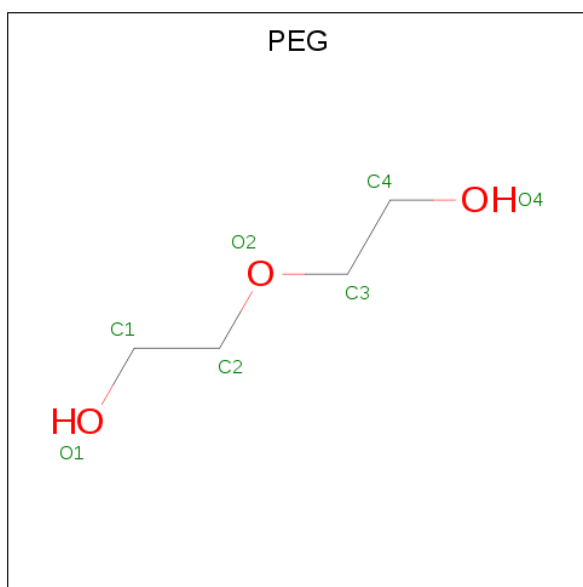
Mol	Chain	Residues	Atoms			ZeroOcc	AltConf
5	B	1	Total	C	O	0	0
			6	3	3		
5	B	1	Total	C	O	0	0
			6	3	3		

- Molecule 6 is S-1,2-PROPANEDIOL (three-letter code: PGO) (formula: C₃H₈O₂).



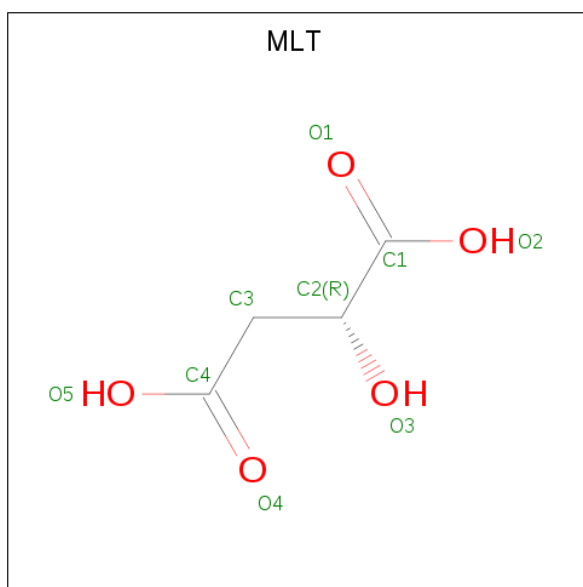
Mol	Chain	Residues	Atoms			ZeroOcc	AltConf
6	A	1	Total	C	O	0	0
			5	3	2		
6	A	1	Total	C	O	0	0
			5	3	2		
6	A	1	Total	C	O	0	0
			5	3	2		
6	B	1	Total	C	O	0	0
			5	3	2		
6	B	1	Total	C	O	0	0
			5	3	2		
6	B	1	Total	C	O	0	0
			5	3	2		

- Molecule 7 is DI(HYDROXYETHYL)ETHER (three-letter code: PEG) (formula: C₄H₁₀O₃).



Mol	Chain	Residues	Atoms	ZeroOcc	AltConf
7	A	1	Total C O 7 4 3	0	0
7	A	1	Total C O 7 4 3	0	0
7	A	1	Total C O 7 4 3	0	0
7	A	1	Total C O 7 4 3	0	0
7	A	1	Total C O 7 4 3	0	0
7	B	1	Total C O 7 4 3	0	0
7	B	1	Total C O 7 4 3	0	0

- Molecule 8 is D-MALATE (three-letter code: MLT) (formula: C₄H₆O₅).



Mol	Chain	Residues	Atoms	ZeroOcc	AltConf
8	B	1	Total C O 9 4 5	0	0

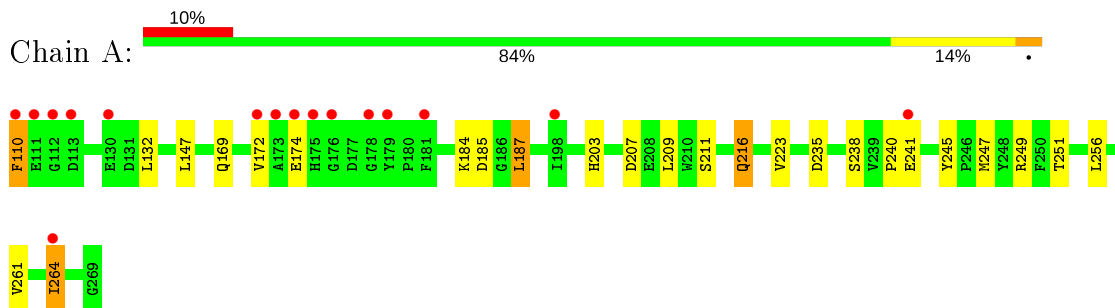
- Molecule 9 is water.

Mol	Chain	Residues	Atoms	ZeroOcc	AltConf
9	A	195	Total O 195 195	0	0
9	B	150	Total O 150 150	0	0

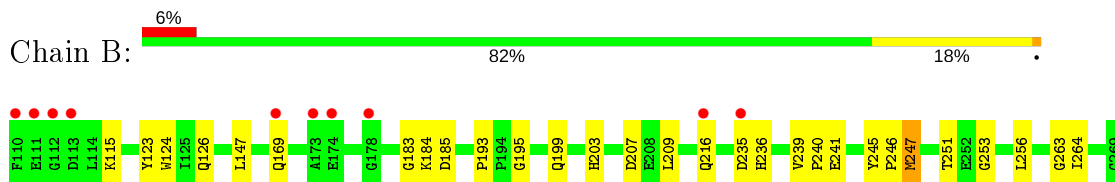
3 Residue-property plots [i](#)

These plots are drawn for all protein, RNA and DNA chains in the entry. The first graphic for a chain summarises the proportions of the various outlier classes displayed in the second graphic. The second graphic shows the sequence view annotated by issues in geometry and electron density. Residues are color-coded according to the number of geometric quality criteria for which they contain at least one outlier: green = 0, yellow = 1, orange = 2 and red = 3 or more. A red dot above a residue indicates a poor fit to the electron density ($RSRZ > 2$). Stretches of 2 or more consecutive residues without any outlier are shown as a green connector. Residues present in the sample, but not in the model, are shown in grey.

- Molecule 1: Matrix metalloproteinase-9



- Molecule 1: Matrix metalloproteinase-9



4 Data and refinement statistics

Property	Value	Source
Space group	P 21 21 2	Depositor
Cell constants a, b, c, α , β , γ	73.87Å 98.24Å 47.44Å 90.00° 90.00° 90.00°	Depositor
Resolution (Å)	42.72 – 1.94 42.72 – 1.94	Depositor EDS
% Data completeness (in resolution range)	100.0 (42.72-1.94) 99.4 (42.72-1.94)	Depositor EDS
R_{merge}	0.17	Depositor
R_{sym}	0.15	Depositor
$\langle I/\sigma(I) \rangle$ ¹	1.32 (at 1.94Å)	Xtrriage
Refinement program	REFMAC 5.5.0109	Depositor
R, R_{free}	0.211 , 0.283 0.214 , 0.285	Depositor DCC
R_{free} test set	1301 reflections (5.00%)	wwPDB-VP
Wilson B-factor (Å ²)	27.4	Xtrriage
Anisotropy	0.034	Xtrriage
Bulk solvent k_{sol} (e/Å ³), B_{sol} (Å ²)	0.38 , 60.2	EDS
L-test for twinning ²	$\langle L \rangle = 0.48$, $\langle L^2 \rangle = 0.31$	Xtrriage
Estimated twinning fraction	No twinning to report.	Xtrriage
F_o, F_c correlation	0.96	EDS
Total number of atoms	3141	wwPDB-VP
Average B, all atoms (Å ²)	32.0	wwPDB-VP

Xtrriage's analysis on translational NCS is as follows: *The analyses of the Patterson function reveals a significant off-origin peak that is 57.70 % of the origin peak, indicating pseudo-translational symmetry. The chance of finding a peak of this or larger height randomly in a structure without pseudo-translational symmetry is equal to 2.2773e-05. The detected translational NCS is most likely also responsible for the elevated intensity ratio.*

¹Intensities estimated from amplitudes.

²Theoretical values of $\langle |L| \rangle$, $\langle L^2 \rangle$ for acentric reflections are 0.5, 0.333 respectively for untwinned datasets, and 0.375, 0.2 for perfectly twinned datasets.

5 Model quality [i](#)

5.1 Standard geometry [i](#)

Bond lengths and bond angles in the following residue types are not validated in this section: GOL, ZN, PGO, CA, MLT, 0ZD, PEG

The Z score for a bond length (or angle) is the number of standard deviations the observed value is removed from the expected value. A bond length (or angle) with $|Z| > 5$ is considered an outlier worth inspection. RMSZ is the root-mean-square of all Z scores of the bond lengths (or angles).

Mol	Chain	Bond lengths		Bond angles	
		RMSZ	# $ Z > 5$	RMSZ	# $ Z > 5$
1	A	0.99	0/1359	0.89	1/1846 (0.1%)
1	B	1.03	1/1340 (0.1%)	0.86	1/1825 (0.1%)
All	All	1.01	1/2699 (0.0%)	0.88	2/3671 (0.1%)

All (1) bond length outliers are listed below:

Mol	Chain	Res	Type	Atoms	Z	Observed(Å)	Ideal(Å)
1	B	123	TYR	CD2-CE2	5.13	1.47	1.39

All (2) bond angle outliers are listed below:

Mol	Chain	Res	Type	Atoms	Z	Observed(°)	Ideal(°)
1	B	147	LEU	CA-CB-CG	5.88	128.84	115.30
1	A	147	LEU	CB-CG-CD1	-5.16	102.22	111.00

There are no chirality outliers.

There are no planarity outliers.

5.2 Too-close contacts [i](#)

In the following table, the Non-H and H(model) columns list the number of non-hydrogen atoms and hydrogen atoms in the chain respectively. The H(added) column lists the number of hydrogen atoms added and optimized by MolProbity. The Clashes column lists the number of clashes within the asymmetric unit, whereas Symm-Clashes lists symmetry related clashes.

Mol	Chain	Non-H	H(model)	H(added)	Clashes	Symm-Clashes
1	A	1313	0	1206	18	0
1	B	1293	0	1185	18	0
2	A	2	0	0	0	0

Continued on next page...

Continued from previous page...

Mol	Chain	Non-H	H(model)	H(added)	Clashes	Symm-Clashes
2	B	2	0	0	0	0
3	A	3	0	0	0	0
3	B	3	0	0	0	0
4	A	62	0	48	3	0
5	A	18	0	24	0	0
5	B	12	0	16	1	0
6	A	15	0	24	2	0
6	B	15	0	24	2	0
7	A	35	0	50	0	0
7	B	14	0	20	2	0
8	B	9	0	4	3	0
9	A	195	0	0	5	0
9	B	150	0	0	2	0
All	All	3141	0	2601	39	0

The all-atom clashscore is defined as the number of clashes found per 1000 atoms (including hydrogen atoms). The all-atom clashscore for this structure is 7.

All (39) close contacts within the same asymmetric unit are listed below, sorted by their clash magnitude.

Atom-1	Atom-2	Interatomic distance (Å)	Clash overlap (Å)
1:A:216[A]:GLN:H	1:A:216[A]:GLN:CD	1.74	0.88
4:A:306:0ZD:H32	4:A:306:0ZD:H40	1.65	0.77
1:A:241:GLU:HG3	9:A:539:HOH:O	1.88	0.73
1:B:241[B]:GLU:O	8:B:506:MLT:H31	1.90	0.72
1:A:172:VAL:HG21	9:A:529:HOH:O	1.93	0.68
1:A:216[B]:GLN:NE2	9:A:490:HOH:O	2.26	0.68
1:B:241[A]:GLU:O	8:B:506:MLT:H31	1.96	0.66
1:A:251:THR:HB	9:A:558:HOH:O	1.95	0.66
1:A:207:ASP:OD2	6:A:311:PGO:H31	1.97	0.63
1:B:240:PRO:HA	1:B:245:TYR:CD1	2.36	0.59
1:B:169:GLN:HG2	1:B:203:HIS:CD2	2.38	0.58
1:A:187:LEU:HD13	1:B:247:MET:SD	2.44	0.58
1:A:110:PHE:N	1:A:110:PHE:CD2	2.73	0.56
1:A:235:ASP:HB3	9:A:432:HOH:O	2.07	0.54
1:B:195:GLY:C	1:B:199:GLN:HB2	2.30	0.52
1:A:110:PHE:HD2	1:A:110:PHE:N	2.08	0.52
5:B:508:GOL:C1	9:B:743:HOH:O	2.58	0.51
6:B:510:PGO:H31	9:B:739:HOH:O	2.13	0.49
1:B:263:GLY:HA2	7:B:513:PEG:H21	1.94	0.49
1:B:236:HIS:CD2	1:B:246:PRO:HB3	2.49	0.47

Continued on next page...

Continued from previous page...

Atom-1	Atom-2	Interatomic distance (Å)	Clash overlap (Å)
1:B:240:PRO:HA	1:B:245:TYR:CG	2.50	0.46
1:A:238[A]:SER:O	1:A:238[A]:SER:OG	2.32	0.46
1:B:251:THR:HG21	8:B:506:MLT:H2	1.96	0.46
1:A:169:GLN:HG3	1:A:203:HIS:CD2	2.51	0.46
4:A:306:0ZD:H32	4:A:306:0ZD:C19	2.34	0.46
1:A:261:VAL:HA	1:A:264:ILE:HD11	1.97	0.46
1:A:223:VAL:HG22	4:A:306:0ZD:H50	1.97	0.46
1:B:124:TRP:CH2	1:B:126:GLN:HG3	2.52	0.45
1:B:184:LYS:O	1:B:185:ASP:HB2	2.18	0.43
1:A:240:PRO:HA	1:A:245:TYR:CD1	2.54	0.43
1:B:183:GLY:HA2	1:B:207:ASP:OD1	2.19	0.42
1:B:263:GLY:CA	7:B:513:PEG:H21	2.49	0.42
1:B:253:GLY:HA3	6:B:509:PGO:H2	2.01	0.42
1:A:184:LYS:O	1:A:185:ASP:HB2	2.20	0.42
1:B:264:ILE:HD12	1:B:264:ILE:HA	1.85	0.42
1:A:235:ASP:OD2	6:A:310:PGO:H2	2.20	0.41
1:B:239:VAL:HG12	1:B:241[B]:GLU:HG2	2.03	0.41
1:A:132:LEU:HD21	1:A:211:SER:HA	2.02	0.41
1:B:193:PRO:O	1:B:199:GLN:HB3	2.21	0.40

There are no symmetry-related clashes.

5.3 Torsion angles [i](#)

5.3.1 Protein backbone [i](#)

In the following table, the Percentiles column shows the percent Ramachandran outliers of the chain as a percentile score with respect to all X-ray entries followed by that with respect to entries of similar resolution.

The Analysed column shows the number of residues for which the backbone conformation was analysed, and the total number of residues.

Mol	Chain	Analysed	Favoured	Allowed	Outliers	Percentiles	
1	A	162/160 (101%)	155 (96%)	7 (4%)	0	100	100
1	B	160/160 (100%)	152 (95%)	8 (5%)	0	100	100
All	All	322/320 (101%)	307 (95%)	15 (5%)	0	100	100

There are no Ramachandran outliers to report.

5.3.2 Protein sidechains [i](#)

In the following table, the Percentiles column shows the percent sidechain outliers of the chain as a percentile score with respect to all X-ray entries followed by that with respect to entries of similar resolution.

The Analysed column shows the number of residues for which the sidechain conformation was analysed, and the total number of residues.

Mol	Chain	Analysed	Rotameric	Outliers	Percentiles	
1	A	132/128 (103%)	122 (92%)	10 (8%)	13	3
1	B	130/128 (102%)	123 (95%)	7 (5%)	22	8
All	All	262/256 (102%)	245 (94%)	17 (6%)	19	5

All (17) residues with a non-rotameric sidechain are listed below:

Mol	Chain	Res	Type
1	A	110	PHE
1	A	174	GLU
1	A	187	LEU
1	A	209	LEU
1	A	216[A]	GLN
1	A	216[B]	GLN
1	A	247	MET
1	A	249	ARG
1	A	256	LEU
1	A	264	ILE
1	B	115	LYS
1	B	209	LEU
1	B	216[A]	GLN
1	B	216[B]	GLN
1	B	235	ASP
1	B	247	MET
1	B	256	LEU

Some sidechains can be flipped to improve hydrogen bonding and reduce clashes. There are no such sidechains identified.

5.3.3 RNA [i](#)

There are no RNA molecules in this entry.

5.4 Non-standard residues in protein, DNA, RNA chains [i](#)

There are no non-standard protein/DNA/RNA residues in this entry.

5.5 Carbohydrates [i](#)

There are no carbohydrates in this entry.

5.6 Ligand geometry [i](#)

Of 30 ligands modelled in this entry, 10 are monoatomic - leaving 20 for Mogul analysis.

In the following table, the Counts columns list the number of bonds (or angles) for which Mogul statistics could be retrieved, the number of bonds (or angles) that are observed in the model and the number of bonds (or angles) that are defined in the Chemical Component Dictionary. The Link column lists molecule types, if any, to which the group is linked. The Z score for a bond length (or angle) is the number of standard deviations the observed value is removed from the expected value. A bond length (or angle) with $|Z| > 2$ is considered an outlier worth inspection. RMSZ is the root-mean-square of all Z scores of the bond lengths (or angles).

Mol	Type	Chain	Res	Link	Bond lengths			Bond angles		
					Counts	RMSZ	# $ Z > 2$	Counts	RMSZ	# $ Z > 2$
7	PEG	A	313	-	6,6,6	0.59	0	5,5,5	0.51	0
6	PGO	A	312	-	3,4,4	0.44	0	1,4,4	0.17	0
6	PGO	B	510	-	3,4,4	0.25	0	1,4,4	0.11	0
5	GOL	B	508	-	5,5,5	0.31	0	5,5,5	0.50	0
4	0ZD	A	306	2	58,66,66	1.90	5 (8%)	80,94,94	2.68	38 (47%)
7	PEG	B	513	-	6,6,6	0.61	0	5,5,5	0.75	0
6	PGO	B	509	-	3,4,4	0.22	0	1,4,4	0.21	0
7	PEG	A	317	-	6,6,6	0.50	0	5,5,5	0.37	0
5	GOL	A	308	-	5,5,5	0.35	0	5,5,5	0.86	0
7	PEG	A	314	-	6,6,6	0.53	0	5,5,5	0.55	0
8	MLT	B	506	-	2,8,8	0.52	0	3,10,10	2.25	1 (33%)
6	PGO	A	310	-	3,4,4	0.49	0	1,4,4	0.20	0
7	PEG	B	512	-	6,6,6	0.64	0	5,5,5	0.38	0
5	GOL	A	307	-	5,5,5	0.54	0	5,5,5	0.57	0
7	PEG	A	315	-	6,6,6	0.66	0	5,5,5	0.36	0
5	GOL	A	309	-	5,5,5	0.39	0	5,5,5	0.79	0
6	PGO	B	511	-	3,4,4	0.54	0	1,4,4	0.21	0
6	PGO	A	311	-	3,4,4	0.41	0	1,4,4	0.58	0
7	PEG	A	316	-	6,6,6	0.60	0	5,5,5	0.30	0
5	GOL	B	507	-	5,5,5	0.47	0	5,5,5	0.72	0

In the following table, the Chirals column lists the number of chiral outliers, the number of chiral

centers analysed, the number of these observed in the model and the number defined in the Chemical Component Dictionary. Similar counts are reported in the Torsion and Rings columns. '-' means no outliers of that kind were identified.

Mol	Type	Chain	Res	Link	Chirals	Torsions	Rings
7	PEG	A	313	-	-	3/4/4/4	-
6	PGO	A	312	-	-	1/2/2/2	-
6	PGO	B	510	-	-	2/2/2/2	-
5	GOL	B	508	-	-	2/4/4/4	-
4	0ZD	A	306	2	-	7/68/76/76	0/5/5/5
7	PEG	B	513	-	-	4/4/4/4	-
6	PGO	B	509	-	-	2/2/2/2	-
7	PEG	A	317	-	-	2/4/4/4	-
5	GOL	A	308	-	-	3/4/4/4	-
7	PEG	A	314	-	-	2/4/4/4	-
8	MLT	B	506	-	-	0/2/8/8	-
6	PGO	A	310	-	-	2/2/2/2	-
7	PEG	B	512	-	-	1/4/4/4	-
5	GOL	A	307	-	-	2/4/4/4	-
7	PEG	A	315	-	-	4/4/4/4	-
5	GOL	A	309	-	-	2/4/4/4	-
6	PGO	B	511	-	-	2/2/2/2	-
6	PGO	A	311	-	-	2/2/2/2	-
7	PEG	A	316	-	-	2/4/4/4	-
5	GOL	B	507	-	-	3/4/4/4	-

All (5) bond length outliers are listed below:

Mol	Chain	Res	Type	Atoms	Z	Observed(Å)	Ideal(Å)
4	A	306	0ZD	C45-S41	-9.04	1.63	1.76
4	A	306	0ZD	C10-S13	-7.26	1.66	1.76
4	A	306	0ZD	S13-N16	-4.09	1.57	1.63
4	A	306	0ZD	S41-N40	-3.14	1.58	1.63
4	A	306	0ZD	O42-S41	2.39	1.46	1.43

All (39) bond angle outliers are listed below:

Mol	Chain	Res	Type	Atoms	Z	Observed(°)	Ideal(°)
4	A	306	0ZD	O15-S13-O14	-9.28	104.48	119.52
4	A	306	0ZD	O14-S13-N16	5.41	116.83	106.97

Continued on next page...

Continued from previous page...

Mol	Chain	Res	Type	Atoms	Z	Observed(°)	Ideal(°)
4	A	306	0ZD	C8-C9-C10	5.16	124.79	119.45
4	A	306	0ZD	C57-C56-N40	5.03	121.59	112.99
4	A	306	0ZD	O28-C27-C29	-4.91	112.17	120.94
4	A	306	0ZD	C29-C34-C33	-4.66	115.01	120.44
4	A	306	0ZD	C29-C27-N26	4.27	126.26	117.09
4	A	306	0ZD	C38-N37-C35	-4.24	112.41	122.08
4	A	306	0ZD	C19-C18-C17	4.02	116.13	110.72
4	A	306	0ZD	C59-C57-C56	3.97	116.06	110.72
4	A	306	0ZD	C25-N26-C27	-3.91	113.17	122.08
4	A	306	0ZD	C20-C18-C17	3.78	115.82	110.72
4	A	306	0ZD	C3-C2-C1	-3.59	116.05	120.56
4	A	306	0ZD	C30-C29-C34	3.54	123.42	119.24
4	A	306	0ZD	C32-C33-C34	3.50	123.38	119.24
8	B	506	MLT	O3-C2-C3	3.46	116.09	108.50
4	A	306	0ZD	O36-C35-C33	-3.43	114.82	120.94
4	A	306	0ZD	O42-S41-O43	-3.41	114.00	119.52
4	A	306	0ZD	C11-C10-C9	-3.37	115.74	120.44
4	A	306	0ZD	O43-S41-C45	3.24	112.15	108.05
4	A	306	0ZD	C17-N16-S13	3.23	124.89	118.30
4	A	306	0ZD	C46-C45-S41	3.22	123.15	119.76
4	A	306	0ZD	C5-C6-C1	3.20	124.59	120.56
4	A	306	0ZD	C18-C17-N16	2.97	118.08	112.99
4	A	306	0ZD	C19-C18-C20	2.93	118.77	110.59
4	A	306	0ZD	C24-C25-N26	-2.87	106.11	111.60
4	A	306	0ZD	C38-C39-N40	2.78	117.15	112.46
4	A	306	0ZD	O42-S41-N40	-2.73	101.98	106.97
4	A	306	0ZD	O43-S41-N40	2.67	111.84	106.97
4	A	306	0ZD	C30-C31-C32	-2.66	116.48	120.25
4	A	306	0ZD	O42-S41-C45	2.63	111.37	108.05
4	A	306	0ZD	C33-C35-N37	2.60	122.68	117.09
4	A	306	0ZD	C47-C46-C45	2.44	121.97	119.45
4	A	306	0ZD	C9-C8-C7	-2.36	117.74	121.13
4	A	306	0ZD	C9-C10-S13	2.35	122.23	119.76
4	A	306	0ZD	C4-C5-C6	-2.25	116.75	120.19
4	A	306	0ZD	C12-C11-C10	2.22	121.75	119.45
4	A	306	0ZD	C11-C10-S13	2.15	122.02	119.76
4	A	306	0ZD	C4-C3-C2	2.08	123.36	120.19

There are no chirality outliers.

All (48) torsion outliers are listed below:

Mol	Chain	Res	Type	Atoms
4	A	306	0ZD	C29-C27-N26-C25
5	A	308	GOL	C1-C2-C3-O3
6	A	310	PGO	O1-C1-C2-C3
6	A	310	PGO	O1-C1-C2-O2
6	B	509	PGO	O1-C1-C2-C3
6	B	509	PGO	O1-C1-C2-O2
6	B	510	PGO	O1-C1-C2-O2
6	B	511	PGO	O1-C1-C2-C3
6	B	511	PGO	O1-C1-C2-O2
6	A	311	PGO	O1-C1-C2-C3
6	A	311	PGO	O1-C1-C2-O2
5	B	507	GOL	C1-C2-C3-O3
4	A	306	0ZD	O28-C27-N26-C25
5	A	307	GOL	O1-C1-C2-O2
7	A	314	PEG	O2-C3-C4-O4
7	A	313	PEG	O1-C1-C2-O2
7	A	315	PEG	O1-C1-C2-O2
7	A	316	PEG	O2-C3-C4-O4
7	A	317	PEG	O1-C1-C2-O2
5	B	508	GOL	O1-C1-C2-C3
5	A	309	GOL	C1-C2-C3-O3
5	A	307	GOL	O1-C1-C2-C3
5	B	507	GOL	O1-C1-C2-C3
5	B	507	GOL	O2-C2-C3-O3
4	A	306	0ZD	N16-C17-C18-C19
5	B	508	GOL	O1-C1-C2-O2
5	A	308	GOL	O2-C2-C3-O3
7	A	316	PEG	O1-C1-C2-O2
7	A	313	PEG	O2-C3-C4-O4
4	A	306	0ZD	N37-C38-C39-N40
7	B	513	PEG	C1-C2-O2-C3
7	A	314	PEG	C1-C2-O2-C3
6	A	312	PGO	O1-C1-C2-C3
6	B	510	PGO	O1-C1-C2-C3
7	A	317	PEG	C1-C2-O2-C3
7	A	315	PEG	C1-C2-O2-C3
5	A	308	GOL	O1-C1-C2-C3
7	A	315	PEG	C4-C3-O2-C2
4	A	306	0ZD	C25-C24-N16-S13
4	A	306	0ZD	C24-N16-S13-O14
4	A	306	0ZD	N40-C56-C57-C59
7	B	513	PEG	C4-C3-O2-C2
7	B	513	PEG	O1-C1-C2-O2

Continued on next page...

Continued from previous page...

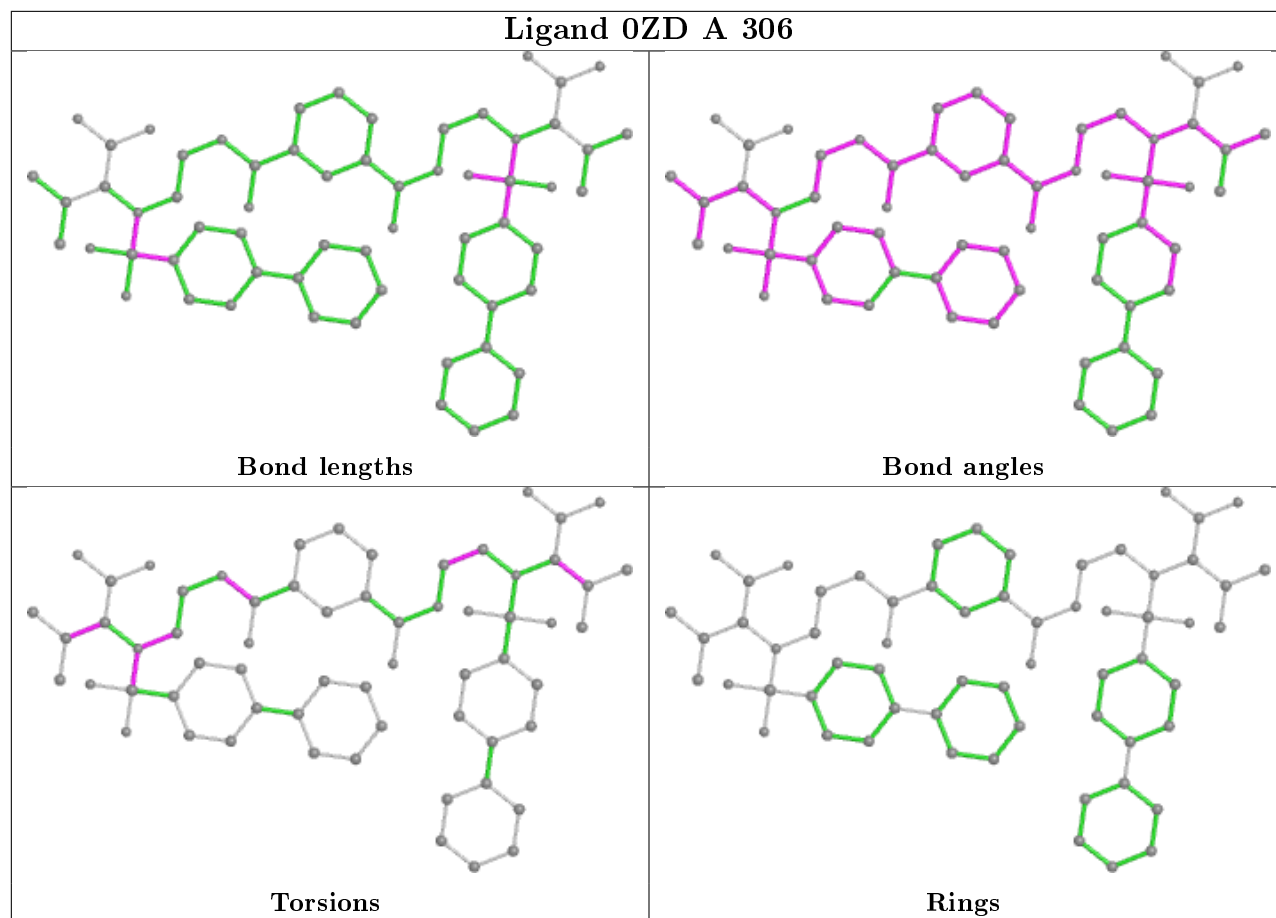
Mol	Chain	Res	Type	Atoms
5	A	309	GOL	O2-C2-C3-O3
7	A	315	PEG	O2-C3-C4-O4
7	A	313	PEG	C1-C2-O2-C3
7	B	512	PEG	O1-C1-C2-O2
7	B	513	PEG	O2-C3-C4-O4

There are no ring outliers.

8 monomers are involved in 13 short contacts:

Mol	Chain	Res	Type	Clashes	Symm-Clashes
6	B	510	PGO	1	0
5	B	508	GOL	1	0
4	A	306	0ZD	3	0
7	B	513	PEG	2	0
6	B	509	PGO	1	0
8	B	506	MLT	3	0
6	A	310	PGO	1	0
6	A	311	PGO	1	0

The following is a two-dimensional graphical depiction of Mogul quality analysis of bond lengths, bond angles, torsion angles, and ring geometry for all instances of the Ligand of Interest. In addition, ligands with molecular weight > 250 and outliers as shown on the validation Tables will also be included. For torsion angles, if less than 5% of the Mogul distribution of torsion angles is within 10 degrees of the torsion angle in question, then that torsion angle is considered an outlier. Any bond that is central to one or more torsion angles identified as an outlier by Mogul will be highlighted in the graph. For rings, the root-mean-square deviation (RMSD) between the ring in question and similar rings identified by Mogul is calculated over all ring torsion angles. If the average RMSD is greater than 60 degrees and the minimal RMSD between the ring in question and any Mogul-identified rings is also greater than 60 degrees, then that ring is considered an outlier. The outliers are highlighted in purple. The color gray indicates Mogul did not find sufficient equivalents in the CSD to analyse the geometry.



5.7 Other polymers [i](#)

There are no such residues in this entry.

5.8 Polymer linkage issues [i](#)

There are no chain breaks in this entry.

6 Fit of model and data

6.1 Protein, DNA and RNA chains

In the following table, the column labelled ‘#RSRZ> 2’ contains the number (and percentage) of RSRZ outliers, followed by percent RSRZ outliers for the chain as percentile scores relative to all X-ray entries and entries of similar resolution. The OWAB column contains the minimum, median, 95th percentile and maximum values of the occupancy-weighted average B-factor per residue. The column labelled ‘Q< 0.9’ lists the number of (and percentage) of residues with an average occupancy less than 0.9.

Mol	Chain	Analysed	<RSRZ>	#RSRZ>2	OWAB(Å ²)	Q<0.9
1	A	160/160 (100%)	0.62	16 (10%) 7 10	17, 29, 49, 74	0
1	B	160/160 (100%)	0.42	10 (6%) 20 26	17, 26, 44, 70	0
All	All	320/320 (100%)	0.52	26 (8%) 12 17	17, 27, 47, 74	0

All (26) RSRZ outliers are listed below:

Mol	Chain	Res	Type	RSRZ
1	B	111	GLU	8.2
1	A	110	PHE	8.0
1	A	112	GLY	7.1
1	B	110	PHE	6.0
1	A	176	GLY	4.5
1	A	174	GLU	4.4
1	B	112	GLY	4.1
1	A	178	GLY	3.7
1	A	179	TYR	3.6
1	A	113	ASP	3.6
1	A	198	ILE	3.1
1	A	111	GLU	2.9
1	A	130	GLU	2.8
1	B	178	GLY	2.7
1	A	241	GLU	2.7
1	A	172	VAL	2.7
1	A	264	ILE	2.6
1	B	216[A]	GLN	2.5
1	B	113	ASP	2.5
1	B	173	ALA	2.4
1	B	174	GLU	2.3
1	A	173	ALA	2.2
1	B	235	ASP	2.2
1	A	181	PHE	2.1

Continued on next page...

Continued from previous page...

Mol	Chain	Res	Type	RSRZ
1	B	169	GLN	2.1
1	A	175	HIS	2.0

6.2 Non-standard residues in protein, DNA, RNA chains [i](#)

There are no non-standard protein/DNA/RNA residues in this entry.

6.3 Carbohydrates [i](#)

There are no carbohydrates in this entry.

6.4 Ligands [i](#)

In the following table, the Atoms column lists the number of modelled atoms in the group and the number defined in the chemical component dictionary. The B-factors column lists the minimum, median, 95th percentile and maximum values of B factors of atoms in the group. The column labelled 'Q<0.9' lists the number of atoms with occupancy less than 0.9.

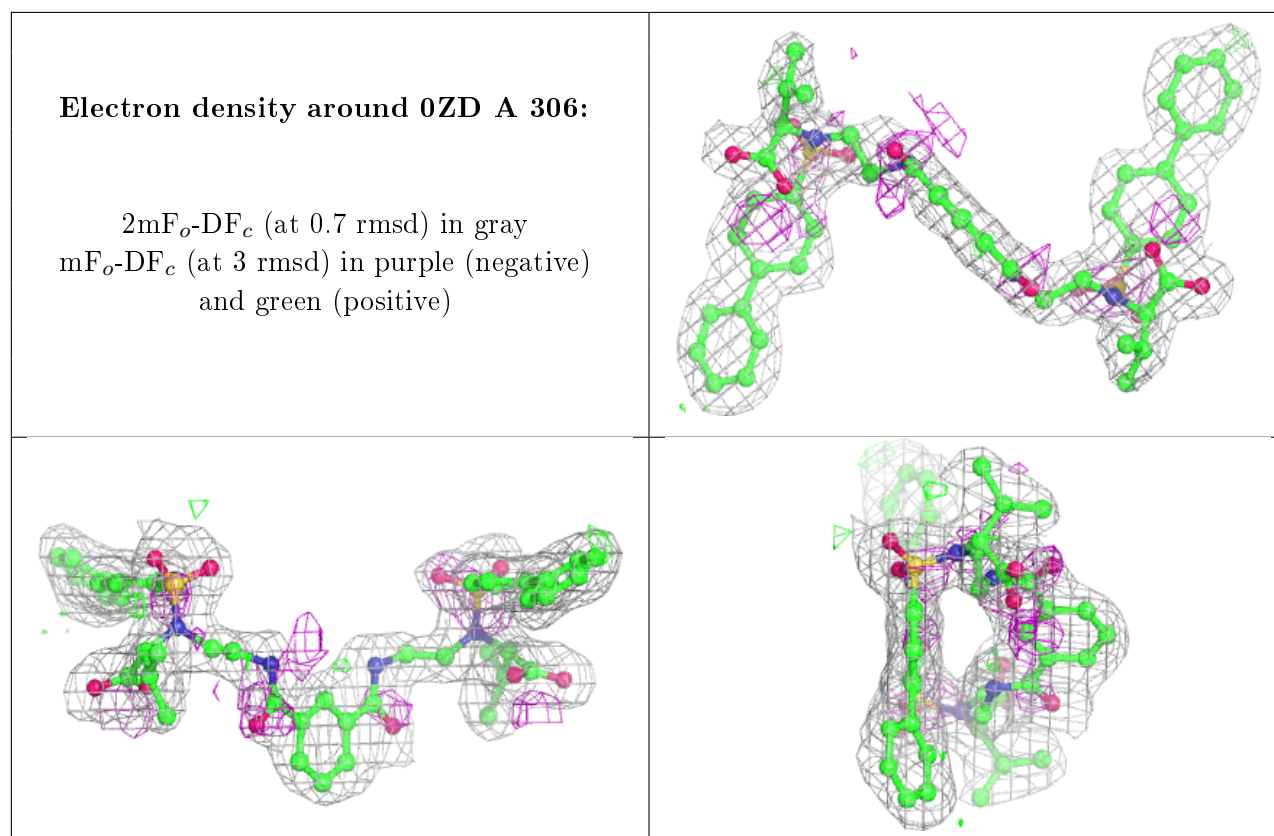
Mol	Type	Chain	Res	Atoms	RSCC	RSR	B-factors(Å ²)	Q<0.9
7	PEG	A	313	7/7	0.38	0.43	56,60,61,63	0
6	PGO	B	509	5/5	0.50	0.38	55,60,61,61	0
7	PEG	A	317	7/7	0.51	0.22	63,65,66,67	0
5	GOL	B	508	6/6	0.53	0.23	58,58,59,60	0
5	GOL	A	309	6/6	0.56	0.21	61,66,67,67	0
7	PEG	A	315	7/7	0.58	0.24	56,59,61,62	0
7	PEG	A	316	7/7	0.65	0.27	63,65,66,67	0
7	PEG	B	512	7/7	0.67	0.22	58,59,60,61	0
6	PGO	B	510	5/5	0.67	0.22	44,45,48,51	0
6	PGO	A	312	5/5	0.68	0.28	73,73,75,76	0
6	PGO	B	511	5/5	0.69	0.20	49,49,50,50	0
6	PGO	A	310	5/5	0.69	0.20	42,43,43,43	0
6	PGO	A	311	5/5	0.71	0.19	50,53,54,54	0
5	GOL	B	507	6/6	0.71	0.25	49,50,51,51	0
8	MLT	B	506	9/9	0.71	0.24	45,50,58,58	0
7	PEG	B	513	7/7	0.75	0.19	44,49,53,55	0
7	PEG	A	314	7/7	0.75	0.20	46,53,56,56	0
5	GOL	A	308	6/6	0.79	0.22	40,46,49,50	0
5	GOL	A	307	6/6	0.83	0.34	38,48,51,52	0
4	OZD	A	306	62/62	0.94	0.12	16,24,30,34	0
3	CA	B	505	1/1	0.96	0.15	55,55,55,55	0

Continued on next page...

Continued from previous page...

Mol	Type	Chain	Res	Atoms	RSCC	RSR	B-factors(\AA^2)	Q<0.9
3	CA	A	305	1/1	0.96	0.17	55,55,55,55	0
3	CA	B	504	1/1	0.98	0.06	29,29,29,29	0
2	ZN	B	502	1/1	0.98	0.05	31,31,31,31	0
3	CA	B	503	1/1	0.99	0.03	29,29,29,29	0
3	CA	A	303	1/1	0.99	0.04	30,30,30,30	0
3	CA	A	304	1/1	0.99	0.04	34,34,34,34	0
2	ZN	B	501	1/1	1.00	0.11	21,21,21,21	0
2	ZN	A	301	1/1	1.00	0.07	22,22,22,22	0
2	ZN	A	302	1/1	1.00	0.05	32,32,32,32	0

The following is a graphical depiction of the model fit to experimental electron density of all instances of the Ligand of Interest. In addition, ligands with molecular weight > 250 and outliers as shown on the geometry validation Tables will also be included. Each fit is shown from different orientation to approximate a three-dimensional view.



6.5 Other polymers [i](#)

There are no such residues in this entry.