



Full wwPDB X-ray Structure Validation Report ⓘ

Aug 3, 2023 – 03:24 AM EDT

PDB ID : 1HN2
Title : CRYSTAL STRUCTURE OF BOVINE OBP COMPLEXED WITH AMINOANTHRACENE
Authors : Vincent, F.; Spinelli, S.; Tegoni, M.; Cambillau, C.
Deposited on : 2000-12-05
Resolution : 1.80 Å(reported)

This is a Full wwPDB X-ray Structure Validation Report for a publicly released PDB entry.

We welcome your comments at validation@mail.wwpdb.org

A user guide is available at

<https://www.wwpdb.org/validation/2017/XrayValidationReportHelp>

with specific help available everywhere you see the ⓘ symbol.

The types of validation reports are described at

<http://www.wwpdb.org/validation/2017/FAQs#types>.

The following versions of software and data (see [references ⓘ](#)) were used in the production of this report:

MolProbity : 4.02b-467
Mogul : 1.8.5 (274361), CSD as541be (2020)
Xtriage (Phenix) : 1.13
EDS : 2.34
Percentile statistics : 20191225.v01 (using entries in the PDB archive December 25th 2019)
Refmac : 5.8.0158
CCP4 : 7.0.044 (Gargrove)
Ideal geometry (proteins) : Engh & Huber (2001)
Ideal geometry (DNA, RNA) : Parkinson et al. (1996)
Validation Pipeline (wwPDB-VP) : 2.34

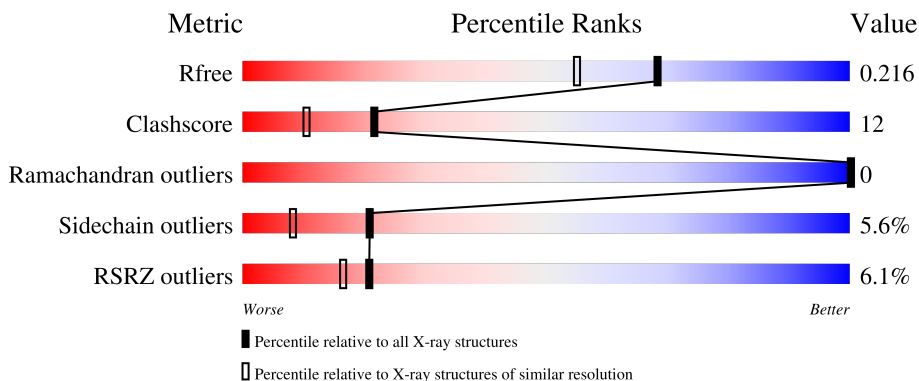
1 Overall quality at a glance

The following experimental techniques were used to determine the structure:

X-RAY DIFFRACTION

The reported resolution of this entry is 1.80 Å.

Percentile scores (ranging between 0-100) for global validation metrics of the entry are shown in the following graphic. The table shows the number of entries on which the scores are based.



Metric	Whole archive (#Entries)	Similar resolution (#Entries, resolution range(Å))
R_{free}	130704	5950 (1.80-1.80)
Clashscore	141614	6793 (1.80-1.80)
Ramachandran outliers	138981	6697 (1.80-1.80)
Sidechain outliers	138945	6696 (1.80-1.80)
RSRZ outliers	127900	5850 (1.80-1.80)

The table below summarises the geometric issues observed across the polymeric chains and their fit to the electron density. The red, orange, yellow and green segments of the lower bar indicate the fraction of residues that contain outliers for ≥ 3 , 2, 1 and 0 types of geometric quality criteria respectively. A grey segment represents the fraction of residues that are not modelled. The numeric value for each fraction is indicated below the corresponding segment, with a dot representing fractions $\leq 5\%$. The upper red bar (where present) indicates the fraction of residues that have poor fit to the electron density. The numeric value is given above the bar.

Mol	Chain	Length	Quality of chain
1	A	159	
1	B	159	

The following table lists non-polymeric compounds, carbohydrate monomers and non-standard residues in protein, DNA, RNA chains that are outliers for geometric or electron-density-fit criteria:

Mol	Type	Chain	Res	Chirality	Geometry	Clashes	Electron density
3	3OL	B	3003[B]	X	X	-	-
3	3OL	B	3003[C]	-	X	-	-

2 Entry composition [i](#)

There are 4 unique types of molecules in this entry. The entry contains 2761 atoms, of which 0 are hydrogens and 0 are deuteriums.

In the tables below, the ZeroOcc column contains the number of atoms modelled with zero occupancy, the AltConf column contains the number of residues with at least one atom in alternate conformation and the Trace column contains the number of residues modelled with at most 2 atoms.

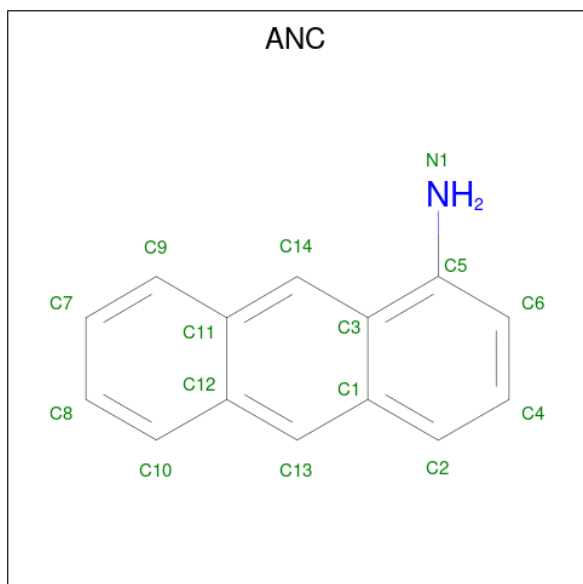
- Molecule 1 is a protein called ODORANT-BINDING PROTEIN.

Mol	Chain	Residues	Atoms				ZeroOcc	AltConf	Trace
			Total	C	N	O			
1	A	159	1306	824	222	260	2	0	0
1	B	155	1286	815	218	253	0	1	0

There are 2 discrepancies between the modelled and reference sequences:

Chain	Residue	Modelled	Actual	Comment	Reference
A	1154	ASN	ASP	conflict	UNP P07435
B	2154	ASN	ASP	conflict	UNP P07435

- Molecule 2 is ANTHRACEN-1-YLAMINE (three-letter code: ANC) (formula: C₁₄H₁₁N).



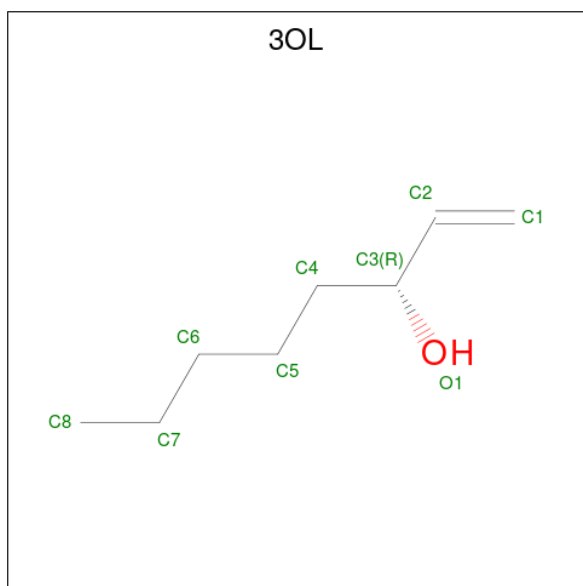
Mol	Chain	Residues	Atoms			ZeroOcc	AltConf
			Total	C	N		
2	A	1	15	14	1	0	0

Continued on next page...

Continued from previous page...

Mol	Chain	Residues	Atoms			ZeroOcc	AltConf
2	B	1	Total	C	N	0	1
			15	14	1		

- Molecule 3 is (3R)-oct-1-en-3-ol (three-letter code: 3OL) (formula: C₈H₁₆O).



Mol	Chain	Residues	Atoms			ZeroOcc	AltConf
3	B	1	Total	C	O	0	1
			18	16	2		

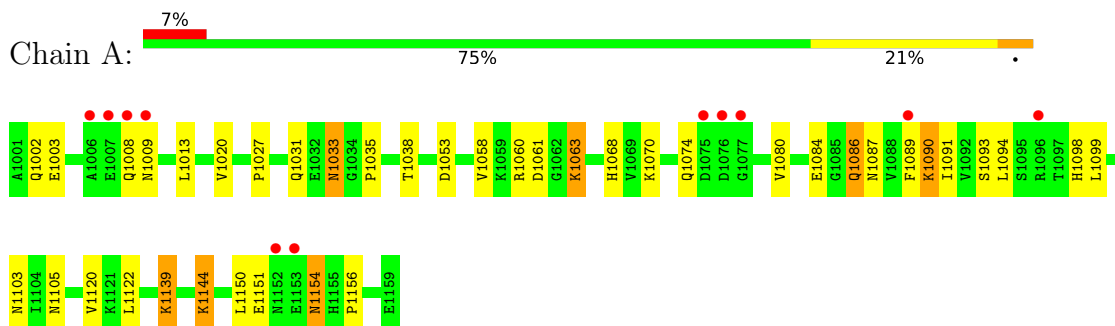
- Molecule 4 is water.

Mol	Chain	Residues	Atoms		ZeroOcc	AltConf
4	A	51	Total	O	0	0
			51	51		
4	B	69	Total	O	0	1
			70	70		

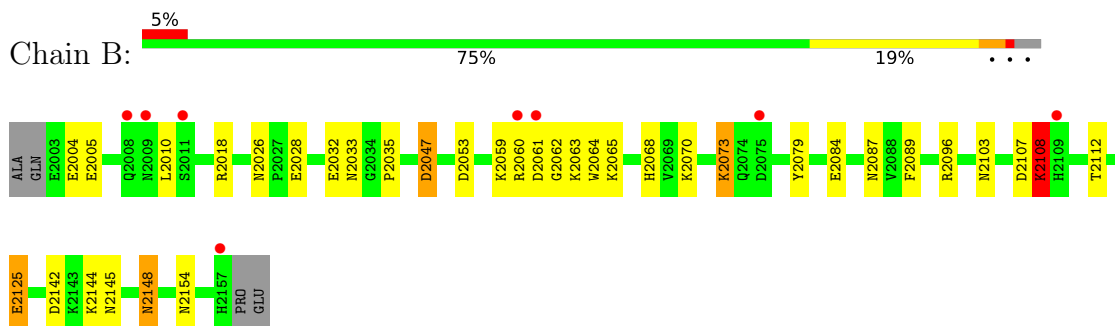
3 Residue-property plots [i](#)

These plots are drawn for all protein, RNA, DNA and oligosaccharide chains in the entry. The first graphic for a chain summarises the proportions of the various outlier classes displayed in the second graphic. The second graphic shows the sequence view annotated by issues in geometry and electron density. Residues are color-coded according to the number of geometric quality criteria for which they contain at least one outlier: green = 0, yellow = 1, orange = 2 and red = 3 or more. A red dot above a residue indicates a poor fit to the electron density ($RSRZ > 2$). Stretches of 2 or more consecutive residues without any outlier are shown as a green connector. Residues present in the sample, but not in the model, are shown in grey.

- Molecule 1: ODORANT-BINDING PROTEIN



- Molecule 1: ODORANT-BINDING PROTEIN



4 Data and refinement statistics

Property	Value	Source
Space group	P 1 21 1	Depositor
Cell constants a, b, c, α , β , γ	55.59Å 65.09Å 42.25Å 90.00° 98.29° 90.00°	Depositor
Resolution (Å)	9.95 – 1.80 14.15 – 1.80	Depositor EDS
% Data completeness (in resolution range)	92.3 (9.95-1.80) 92.3 (14.15-1.80)	Depositor EDS
R_{merge}	(Not available)	Depositor
R_{sym}	5.20	Depositor
$\langle I/\sigma(I) \rangle$ ¹	2.28 (at 1.80Å)	Xtrriage
Refinement program	CNS	Depositor
R, R_{free}	0.202 , 0.223 0.197 , 0.216	Depositor DCC
R_{free} test set	1233 reflections (4.83%)	wwPDB-VP
Wilson B-factor (Å ²)	26.1	Xtrriage
Anisotropy	0.351	Xtrriage
Bulk solvent k_{sol} (e/Å ³), B_{sol} (Å ²)	0.38 , 75.4	EDS
L-test for twinning ²	$\langle L \rangle = 0.50$, $\langle L^2 \rangle = 0.33$	Xtrriage
Estimated twinning fraction	No twinning to report.	Xtrriage
F_o, F_c correlation	0.95	EDS
Total number of atoms	2761	wwPDB-VP
Average B, all atoms (Å ²)	34.0	wwPDB-VP

Xtrriage's analysis on translational NCS is as follows: *The largest off-origin peak in the Patterson function is 6.22% of the height of the origin peak. No significant pseudotranslation is detected.*

¹Intensities estimated from amplitudes.

²Theoretical values of $\langle |L| \rangle$, $\langle L^2 \rangle$ for acentric reflections are 0.5, 0.333 respectively for untwinned datasets, and 0.375, 0.2 for perfectly twinned datasets.

5 Model quality [i](#)

5.1 Standard geometry [i](#)

Bond lengths and bond angles in the following residue types are not validated in this section: 3OL, ANC

The Z score for a bond length (or angle) is the number of standard deviations the observed value is removed from the expected value. A bond length (or angle) with $|Z| > 5$ is considered an outlier worth inspection. RMSZ is the root-mean-square of all Z scores of the bond lengths (or angles).

Mol	Chain	Bond lengths		Bond angles	
		RMSZ	# $ Z > 5$	RMSZ	# $ Z > 5$
1	A	0.51	4/1336 (0.3%)	0.64	2/1806 (0.1%)
1	B	0.59	2/1316 (0.2%)	0.72	3/1779 (0.2%)
All	All	0.55	6/2652 (0.2%)	0.68	5/3585 (0.1%)

All (6) bond length outliers are listed below:

Mol	Chain	Res	Type	Atoms	Z	Observed(Å)	Ideal(Å)
1	B	2108	LYS	CB-CG	-9.58	1.26	1.52
1	B	2108	LYS	CG-CD	-7.25	1.27	1.52
1	A	1139	LYS	CB-CG	-5.68	1.37	1.52
1	A	1063	LYS	CG-CD	-5.61	1.33	1.52
1	A	1070	LYS	CG-CD	-5.20	1.34	1.52
1	A	1144	LYS	CG-CD	-5.12	1.35	1.52

All (5) bond angle outliers are listed below:

Mol	Chain	Res	Type	Atoms	Z	Observed(°)	Ideal(°)
1	A	1139	LYS	CA-CB-CG	-6.11	99.96	113.40
1	A	1070	LYS	CB-CA-C	-6.07	98.26	110.40
1	B	2070	LYS	CD-CE-NZ	-5.60	98.83	111.70
1	B	2073	LYS	CD-CE-NZ	-5.58	98.87	111.70
1	B	2108	LYS	CA-CB-CG	-5.45	101.40	113.40

There are no chirality outliers.

There are no planarity outliers.

5.2 Too-close contacts

In the following table, the Non-H and H(model) columns list the number of non-hydrogen atoms and hydrogen atoms in the chain respectively. The H(added) column lists the number of hydrogen atoms added and optimized by MolProbity. The Clashes column lists the number of clashes within the asymmetric unit, whereas Symm-Clashes lists symmetry-related clashes.

Mol	Chain	Non-H	H(model)	H(added)	Clashes	Symm-Clashes
1	A	1306	0	1239	32	0
1	B	1286	0	1221	30	0
2	A	15	0	11	2	0
2	B	15	0	11	2	0
3	B	18	0	31	2	0
4	A	51	0	0	1	0
4	B	70	0	0	1	0
All	All	2761	0	2513	61	0

The all-atom clashscore is defined as the number of clashes found per 1000 atoms (including hydrogen atoms). The all-atom clashscore for this structure is 12.

All (61) close contacts within the same asymmetric unit are listed below, sorted by their clash magnitude.

Atom-1	Atom-2	Interatomic distance (Å)	Clash overlap (Å)
1:A:1089:PHE:HB3	1:A:1103:ASN:HD22	1.23	0.99
1:B:2089[B]:PHE:HB3	1:B:2103:ASN:HD22	1.46	0.79
1:B:2089[A]:PHE:HD2	2:B:3002[A]:ANC:H14C	1.51	0.76
1:A:1089:PHE:HB3	1:A:1103:ASN:ND2	2.04	0.71
1:B:2089[A]:PHE:CD2	2:B:3002[A]:ANC:H14C	2.27	0.70
1:A:1151:GLU:O	1:A:1151:GLU:HG3	1.92	0.68
1:B:2087:ASN:HB3	1:B:2103:ASN:HD21	1.57	0.68
1:B:2087:ASN:CB	3:B:3003[C]:3OL:H12	2.26	0.66
1:A:1013:LEU:HD12	1:A:1013:LEU:N	2.12	0.65
1:B:2053:ASP:OD2	1:B:2068:HIS:HE1	1.81	0.63
1:B:2107:ASP:HB2	1:B:2108:LYS:HE2	1.81	0.62
1:A:1087:ASN:ND2	1:A:1105:ASN:HD22	1.98	0.60
1:A:1087:ASN:HD21	1:A:1105:ASN:HD22	1.50	0.60
1:A:1074:GLN:NE2	1:A:1080:VAL:HG23	2.16	0.59
1:A:1002:GLN:HG3	1:A:1003:GLU:N	2.16	0.58
1:B:2060:ARG:HH21	1:B:2065:LYS:HE3	1.69	0.58
1:A:1035:PRO:HB2	1:A:1084:GLU:HG3	1.85	0.58
1:A:1087:ASN:HB3	1:A:1103:ASN:HD21	1.70	0.57
1:B:2089[B]:PHE:HB3	1:B:2103:ASN:ND2	2.19	0.57
1:B:2112:THR:HG22	4:B:52:HOH:O	2.05	0.57

Continued on next page...

Continued from previous page...

Atom-1	Atom-2	Interatomic distance (Å)	Clash overlap (Å)
1:A:1038:THR:HG22	1:A:1058:VAL:CG1	2.35	0.56
1:A:1154:ASN:HB3	4:A:38:HOH:O	2.04	0.56
1:B:2144:LYS:HD2	1:B:2145:ASN:ND2	2.21	0.56
1:A:1060:ARG:HH22	1:A:1084:GLU:CD	2.09	0.56
1:B:2026:ASN:OD1	1:B:2028:GLU:HG2	2.07	0.55
1:B:2059:LYS:HZ3	1:B:2062:GLY:HA2	1.73	0.54
1:A:1027:PRO:O	1:A:1031:GLN:HG3	2.08	0.53
1:B:2073:LYS:HB2	1:B:2079:TYR:CE2	2.43	0.53
1:B:2096:ARG:NH2	1:B:2125:GLU:OE2	2.41	0.53
1:A:1035:PRO:HB3	1:A:1060:ARG:NH2	2.24	0.53
1:B:2010:LEU:HB3	1:B:2047:ASP:OD2	2.10	0.52
1:B:2059:LYS:NZ	1:B:2062:GLY:HA2	2.25	0.51
1:A:1020:VAL:HG21	1:A:1120:VAL:HG13	1.92	0.51
1:B:2060:ARG:HH11	1:B:2060:ARG:HG3	1.77	0.49
1:A:1156:PRO:HG3	1:B:2064:TRP:CZ3	2.48	0.49
1:B:2053:ASP:OD2	1:B:2068:HIS:CE1	2.65	0.49
1:B:2035:PRO:HB2	1:B:2084:GLU:HG3	1.95	0.48
1:B:2047:ASP:OD2	1:B:2047:ASP:N	2.46	0.48
1:A:1033:ASN:HD21	1:A:1061:ASP:H	1.61	0.48
1:A:1038:THR:HG22	1:A:1058:VAL:HG11	1.95	0.48
1:B:2142:ASP:OD1	1:B:2144:LYS:HG3	2.14	0.48
1:B:2148:ASN:HD22	1:B:2148:ASN:C	2.18	0.46
1:A:1013:LEU:N	1:A:1013:LEU:CD1	2.78	0.46
1:B:2018:ARG:HH12	1:B:2154:ASN:ND2	2.12	0.46
3:B:3003[C]:3OL:H41	3:B:3003[C]:3OL:H11	1.57	0.46
1:B:2010:LEU:HD23	1:B:2047:ASP:OD2	2.17	0.45
1:A:1091:ILE:HG23	1:A:1099:LEU:CD1	2.47	0.45
1:A:1139:LYS:HD3	1:A:1139:LYS:HA	1.72	0.44
1:A:1013:LEU:HD12	1:A:1013:LEU:H	1.79	0.44
1:A:1122:LEU:N	1:A:1122:LEU:HD12	2.33	0.44
1:A:1086:GLN:HE21	1:A:1086:GLN:HB3	1.51	0.43
1:A:1094:LEU:HD13	1:A:1099:LEU:HD13	2.02	0.42
1:A:1053:ASP:OD2	1:A:1068:HIS:HE1	2.02	0.42
1:A:1156:PRO:HG3	1:B:2064:TRP:CE3	2.54	0.42
1:B:2032:GLU:O	1:B:2033:ASN:HB2	2.20	0.42
1:A:1090:LYS:HD3	1:A:1091:ILE:N	2.35	0.41
1:A:1093:SER:OG	1:A:1098:HIS:HE1	2.02	0.41
1:A:1103:ASN:HB2	2:A:3001:ANC:C9	2.51	0.41
1:B:2060:ARG:HD2	1:B:2061:ASP:OD2	2.21	0.41
1:A:1038:THR:HG21	2:A:3001:ANC:HC2	2.02	0.41
1:B:2060:ARG:HD2	1:B:2061:ASP:CG	2.42	0.40

There are no symmetry-related clashes.

5.3 Torsion angles [i](#)

5.3.1 Protein backbone [i](#)

In the following table, the Percentiles column shows the percent Ramachandran outliers of the chain as a percentile score with respect to all X-ray entries followed by that with respect to entries of similar resolution.

The Analysed column shows the number of residues for which the backbone conformation was analysed, and the total number of residues.

Mol	Chain	Analysed	Favoured	Allowed	Outliers	Percentiles	
1	A	157/159 (99%)	152 (97%)	5 (3%)	0	100	100
1	B	154/159 (97%)	152 (99%)	2 (1%)	0	100	100
All	All	311/318 (98%)	304 (98%)	7 (2%)	0	100	100

There are no Ramachandran outliers to report.

5.3.2 Protein sidechains [i](#)

In the following table, the Percentiles column shows the percent sidechain outliers of the chain as a percentile score with respect to all X-ray entries followed by that with respect to entries of similar resolution.

The Analysed column shows the number of residues for which the sidechain conformation was analysed, and the total number of residues.

Mol	Chain	Analysed	Rotameric	Outliers	Percentiles	
1	A	144/145 (99%)	135 (94%)	9 (6%)	18	6
1	B	142/145 (98%)	135 (95%)	7 (5%)	25	11
All	All	286/290 (99%)	270 (94%)	16 (6%)	21	8

All (16) residues with a non-rotameric sidechain are listed below:

Mol	Chain	Res	Type
1	A	1008	GLN
1	A	1009	ASN
1	A	1033	ASN
1	A	1063	LYS
1	A	1086	GLN

Continued on next page...

Continued from previous page...

Mol	Chain	Res	Type
1	A	1090	LYS
1	A	1144	LYS
1	A	1150	LEU
1	A	1154	ASN
1	B	2004	GLU
1	B	2005	GLU
1	B	2047	ASP
1	B	2063	LYS
1	B	2108	LYS
1	B	2125	GLU
1	B	2148	ASN

Sometimes sidechains can be flipped to improve hydrogen bonding and reduce clashes. All (16) such sidechains are listed below:

Mol	Chain	Res	Type
1	A	1008	GLN
1	A	1009	ASN
1	A	1031	GLN
1	A	1033	ASN
1	A	1068	HIS
1	A	1074	GLN
1	A	1086	GLN
1	A	1087	ASN
1	A	1098	HIS
1	A	1103	ASN
1	A	1154	ASN
1	B	2068	HIS
1	B	2103	ASN
1	B	2145	ASN
1	B	2148	ASN
1	B	2154	ASN

5.3.3 RNA [i](#)

There are no RNA molecules in this entry.

5.4 Non-standard residues in protein, DNA, RNA chains [i](#)

There are no non-standard protein/DNA/RNA residues in this entry.

5.5 Carbohydrates [i](#)

There are no monosaccharides in this entry.

5.6 Ligand geometry [i](#)

4 ligands are modelled in this entry.

In the following table, the Counts columns list the number of bonds (or angles) for which Mogul statistics could be retrieved, the number of bonds (or angles) that are observed in the model and the number of bonds (or angles) that are defined in the Chemical Component Dictionary. The Link column lists molecule types, if any, to which the group is linked. The Z score for a bond length (or angle) is the number of standard deviations the observed value is removed from the expected value. A bond length (or angle) with $|Z| > 2$ is considered an outlier worth inspection. RMSZ is the root-mean-square of all Z scores of the bond lengths (or angles).

Mol	Type	Chain	Res	Link	Bond lengths			Bond angles		
					Counts	RMSZ	# Z > 2	Counts	RMSZ	# Z > 2
2	ANC	B	3002[A]	-	17,17,17	3.33	7 (41%)	23,24,24	3.36	7 (30%)
3	3OL	B	3003[C]	-	8,8,8	2.62	3 (37%)	8,8,8	3.17	4 (50%)
2	ANC	A	3001	-	17,17,17	3.30	7 (41%)	23,24,24	3.49	7 (30%)
3	3OL	B	3003[B]	-	8,8,8	1.55	2 (25%)	8,8,8	3.27	5 (62%)

In the following table, the Chirals column lists the number of chiral outliers, the number of chiral centers analysed, the number of these observed in the model and the number defined in the Chemical Component Dictionary. Similar counts are reported in the Torsion and Rings columns. '-' means no outliers of that kind were identified.

Mol	Type	Chain	Res	Link	Chirals	Torsions	Rings
3	3OL	B	3003[C]	-	-	4/7/7/7	-
2	ANC	A	3001	-	-	-	0/3/3/3
2	ANC	B	3002[A]	-	-	-	0/3/3/3
3	3OL	B	3003[B]	-	1/1/1/2	3/7/7/7	-

All (19) bond length outliers are listed below:

Mol	Chain	Res	Type	Atoms	Z	Observed(Å)	Ideal(Å)
2	A	3001	ANC	C14-C11	7.32	1.53	1.39
2	B	3002[A]	ANC	C14-C11	7.02	1.52	1.39
2	B	3002[A]	ANC	C13-C12	6.67	1.52	1.39
2	A	3001	ANC	C13-C12	6.24	1.51	1.39
2	A	3001	ANC	C8-C7	6.03	1.54	1.38
2	B	3002[A]	ANC	C8-C7	5.92	1.53	1.38

Continued on next page...

Continued from previous page...

Mol	Chain	Res	Type	Atoms	Z	Observed(Å)	Ideal(Å)
3	B	3003[C]	3OL	C1-C2	5.19	1.56	1.29
2	B	3002[A]	ANC	C5-N1	4.29	1.51	1.38
2	A	3001	ANC	C5-N1	4.26	1.51	1.38
2	B	3002[A]	ANC	C4-C2	4.11	1.46	1.36
2	A	3001	ANC	C4-C2	3.85	1.45	1.36
3	B	3003[C]	3OL	C4-C3	3.82	1.61	1.52
3	B	3003[B]	3OL	C1-C2	3.62	1.48	1.29
3	B	3003[C]	3OL	C3-C2	3.51	1.59	1.50
2	B	3002[A]	ANC	C4-C6	3.24	1.45	1.38
2	A	3001	ANC	C4-C6	3.04	1.45	1.38
2	B	3002[A]	ANC	C8-C10	2.21	1.41	1.36
2	A	3001	ANC	C7-C9	2.08	1.41	1.36
3	B	3003[B]	3OL	C3-C2	-2.01	1.45	1.50

All (23) bond angle outliers are listed below:

Mol	Chain	Res	Type	Atoms	Z	Observed(°)	Ideal(°)
2	B	3002[A]	ANC	C14-C3-C5	-11.19	114.00	123.08
2	A	3001	ANC	C14-C3-C5	-11.08	114.09	123.08
2	A	3001	ANC	C3-C14-C11	-7.11	113.54	122.01
3	B	3003[C]	3OL	O1-C3-C4	6.88	123.21	109.22
2	B	3002[A]	ANC	C3-C14-C11	-6.15	114.68	122.01
2	A	3001	ANC	C14-C3-C1	6.12	125.91	118.94
3	B	3003[B]	3OL	C4-C3-C2	6.12	122.22	111.57
2	B	3002[A]	ANC	C14-C3-C1	5.85	125.60	118.94
2	B	3002[A]	ANC	C12-C13-C1	-4.52	115.38	121.92
2	A	3001	ANC	C12-C13-C1	-4.52	115.39	121.92
3	B	3003[B]	3OL	O1-C3-C4	4.34	118.04	109.22
3	B	3003[B]	3OL	O1-C3-C2	3.91	119.69	109.23
3	B	3003[C]	3OL	O1-C3-C2	3.51	118.61	109.23
2	A	3001	ANC	C10-C12-C13	-3.23	116.70	122.00
2	A	3001	ANC	C13-C1-C3	3.09	122.56	119.26
2	A	3001	ANC	C2-C1-C13	-3.03	117.03	122.00
2	B	3002[A]	ANC	C10-C12-C13	-2.90	117.25	122.00
3	B	3003[B]	3OL	C3-C2-C1	-2.89	107.44	126.15
2	B	3002[A]	ANC	C13-C1-C3	2.83	122.29	119.26
2	B	3002[A]	ANC	C2-C1-C13	-2.71	117.56	122.00
3	B	3003[C]	3OL	C5-C4-C3	2.67	120.48	115.12
3	B	3003[C]	3OL	C3-C2-C1	-2.66	108.94	126.15
3	B	3003[B]	3OL	C5-C4-C3	2.26	119.67	115.12

All (1) chirality outliers are listed below:

Mol	Chain	Res	Type	Atom
3	B	3003[B]	3OL	C3

All (7) torsion outliers are listed below:

Mol	Chain	Res	Type	Atoms
3	B	3003[B]	3OL	C1-C2-C3-O1
3	B	3003[B]	3OL	O1-C3-C4-C5
3	B	3003[C]	3OL	C1-C2-C3-O1
3	B	3003[C]	3OL	C2-C3-C4-C5
3	B	3003[C]	3OL	O1-C3-C4-C5
3	B	3003[B]	3OL	C1-C2-C3-C4
3	B	3003[C]	3OL	C1-C2-C3-C4

There are no ring outliers.

3 monomers are involved in 6 short contacts:

Mol	Chain	Res	Type	Clashes	Symm-Clashes
2	B	3002[A]	ANC	2	0
3	B	3003[C]	3OL	2	0
2	A	3001	ANC	2	0

5.7 Other polymers [i](#)

There are no such residues in this entry.

5.8 Polymer linkage issues [i](#)

There are no chain breaks in this entry.

6 Fit of model and data [i](#)

6.1 Protein, DNA and RNA chains [i](#)

In the following table, the column labelled ‘#RSRZ > 2’ contains the number (and percentage) of RSRZ outliers, followed by percent RSRZ outliers for the chain as percentile scores relative to all X-ray entries and entries of similar resolution. The OWAB column contains the minimum, median, 95th percentile and maximum values of the occupancy-weighted average B-factor per residue. The column labelled ‘Q < 0.9’ lists the number of (and percentage) of residues with an average occupancy less than 0.9.

Mol	Chain	Analysed	<RSRZ>	#RSRZ>2	OWAB(Å ²)	Q<0.9
1	A	159/159 (100%)	0.42	11 (6%) 16 13	19, 34, 59, 68	16 (10%)
1	B	155/159 (97%)	0.14	8 (5%) 27 22	17, 28, 51, 63	19 (12%)
All	All	314/318 (98%)	0.28	19 (6%) 21 16	17, 32, 59, 68	35 (11%)

All (19) RSRZ outliers are listed below:

Mol	Chain	Res	Type	RSRZ
1	A	1152	ASN	5.7
1	A	1006	ALA	5.6
1	A	1007	GLU	5.4
1	A	1077	GLY	5.0
1	A	1008	GLN	4.9
1	B	2157	HIS	4.6
1	B	2075	ASP	3.3
1	A	1153	GLU	3.3
1	A	1009	ASN	2.9
1	B	2008	GLN	2.7
1	B	2009	ASN	2.7
1	B	2011	SER	2.6
1	B	2060	ARG	2.6
1	A	1076	ASP	2.6
1	A	1096	ARG	2.5
1	B	2109	HIS	2.3
1	A	1075	ASP	2.3
1	B	2061	ASP	2.1
1	A	1089	PHE	2.1

6.2 Non-standard residues in protein, DNA, RNA chains [i](#)

There are no non-standard protein/DNA/RNA residues in this entry.

6.3 Carbohydrates [i](#)

There are no monosaccharides in this entry.

6.4 Ligands [i](#)

In the following table, the Atoms column lists the number of modelled atoms in the group and the number defined in the chemical component dictionary. The B-factors column lists the minimum, median, 95th percentile and maximum values of B factors of atoms in the group. The column labelled 'Q< 0.9' lists the number of atoms with occupancy less than 0.9.

Mol	Type	Chain	Res	Atoms	RSCC	RSR	B-factors(Å ²)	Q<0.9
2	ANC	B	3002[A]	15/15	0.82	0.20	45,47,49,49	15
3	3OL	B	3003[B]	9/9	0.85	0.18	49,50,51,51	9
3	3OL	B	3003[C]	9/9	0.85	0.18	50,51,52,52	9
2	ANC	A	3001	15/15	0.89	0.15	44,48,52,53	0

6.5 Other polymers [i](#)

There are no such residues in this entry.