



Full wwPDB X-ray Structure Validation Report ⓘ

Oct 6, 2024 – 10:20 AM EDT

PDB ID : 2HT5
Title : N8 Neuraminidase
Authors : Russell, R.J.; Haire, L.F.; Stevens, D.J.; Collins, P.J.; Lin, Y.P.; Blackburn, G.M.; Hay, A.J.; Gamblin, S.J.; Skehel, J.J.
Deposited on : 2006-07-25
Resolution : 2.40 Å(reported)

This is a Full wwPDB X-ray Structure Validation Report for a publicly released PDB entry.

We welcome your comments at validation@mail.wwpdb.org

A user guide is available at

<https://www.wwpdb.org/validation/2017/XrayValidationReportHelp>

with specific help available everywhere you see the ⓘ symbol.

The types of validation reports are described at

<http://www.wwpdb.org/validation/2017/FAQs#types>.

The following versions of software and data (see [references ⓘ](#)) were used in the production of this report:

MolProbity : 4.02b-467
Mogul : 2022.3.0, CSD as543be (2022)
Xtrriage (Phenix) : 1.20.1
EDS : 3.0
Percentile statistics : 20231227.v01 (using entries in the PDB archive December 27th 2023)
CCP4 : 9.0.003 (Gargrove)
Density-Fitness : 1.0.11
Ideal geometry (proteins) : Engh & Huber (2001)
Ideal geometry (DNA, RNA) : Parkinson et al. (1996)
Validation Pipeline (wwPDB-VP) : 2.39

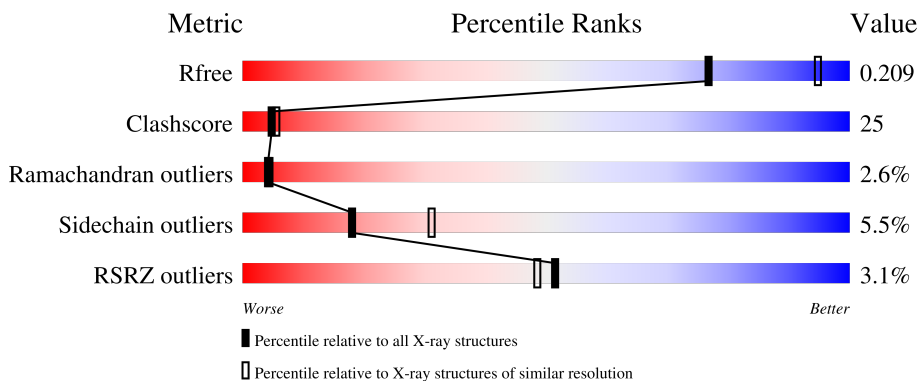
1 Overall quality at a glance

The following experimental techniques were used to determine the structure:

X-RAY DIFFRACTION

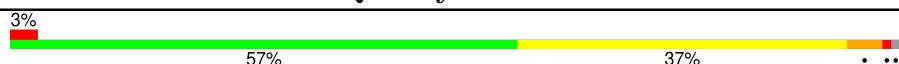
The reported resolution of this entry is 2.40 Å.

Percentile scores (ranging between 0-100) for global validation metrics of the entry are shown in the following graphic. The table shows the number of entries on which the scores are based.



Metric	Whole archive (#Entries)	Similar resolution (#Entries, resolution range(Å))
R_{free}	164625	4642 (2.40-2.40)
Clashscore	180529	5218 (2.40-2.40)
Ramachandran outliers	177936	5158 (2.40-2.40)
Sidechain outliers	177891	5159 (2.40-2.40)
RSRZ outliers	164620	4642 (2.40-2.40)

The table below summarises the geometric issues observed across the polymeric chains and their fit to the electron density. The red, orange, yellow and green segments of the lower bar indicate the fraction of residues that contain outliers for ≥ 3 , 2, 1 and 0 types of geometric quality criteria respectively. A grey segment represents the fraction of residues that are not modelled. The numeric value for each fraction is indicated below the corresponding segment, with a dot representing fractions $\leq 5\%$. The upper red bar (where present) indicates the fraction of residues that have poor fit to the electron density. The numeric value is given above the bar.

Mol	Chain	Length	Quality of chain
1	A	390	

2 Entry composition [i](#)

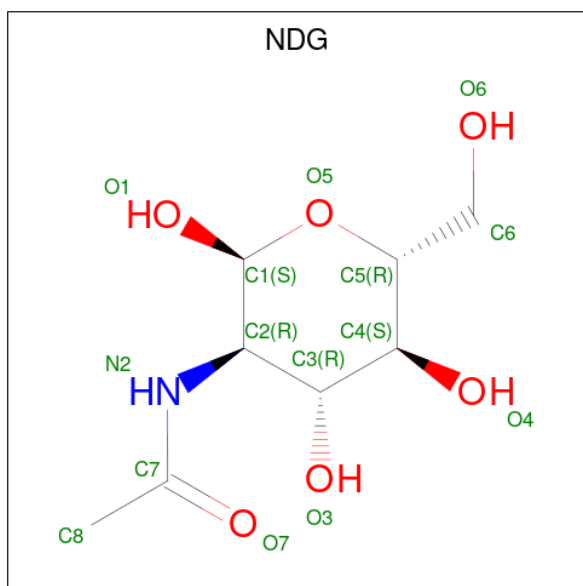
There are 4 unique types of molecules in this entry. The entry contains 3169 atoms, of which 0 are hydrogens and 0 are deuteriums.

In the tables below, the ZeroOcc column contains the number of atoms modelled with zero occupancy, the AltConf column contains the number of residues with at least one atom in alternate conformation and the Trace column contains the number of residues modelled with at most 2 atoms.

- Molecule 1 is a protein called Neuraminidase.

Mol	Chain	Residues	Atoms					ZeroOcc	AltConf	Trace
			Total	C	N	O	S			
1	A	387	2998	1878	524	572	24	0	0	0

- Molecule 2 is 2-acetamido-2-deoxy- α -D-glucopyranose (three-letter code: NDG) (formula: C₈H₁₅NO₆).



Mol	Chain	Residues	Atoms				ZeroOcc	AltConf
			Total	C	N	O		
2	A	1	15	8	1	6	0	0

- Molecule 3 is CALCIUM ION (three-letter code: CA) (formula: Ca).

Mol	Chain	Residues	Atoms		ZeroOcc	AltConf
3	A	1	Total	Ca	0	0
			1	1		

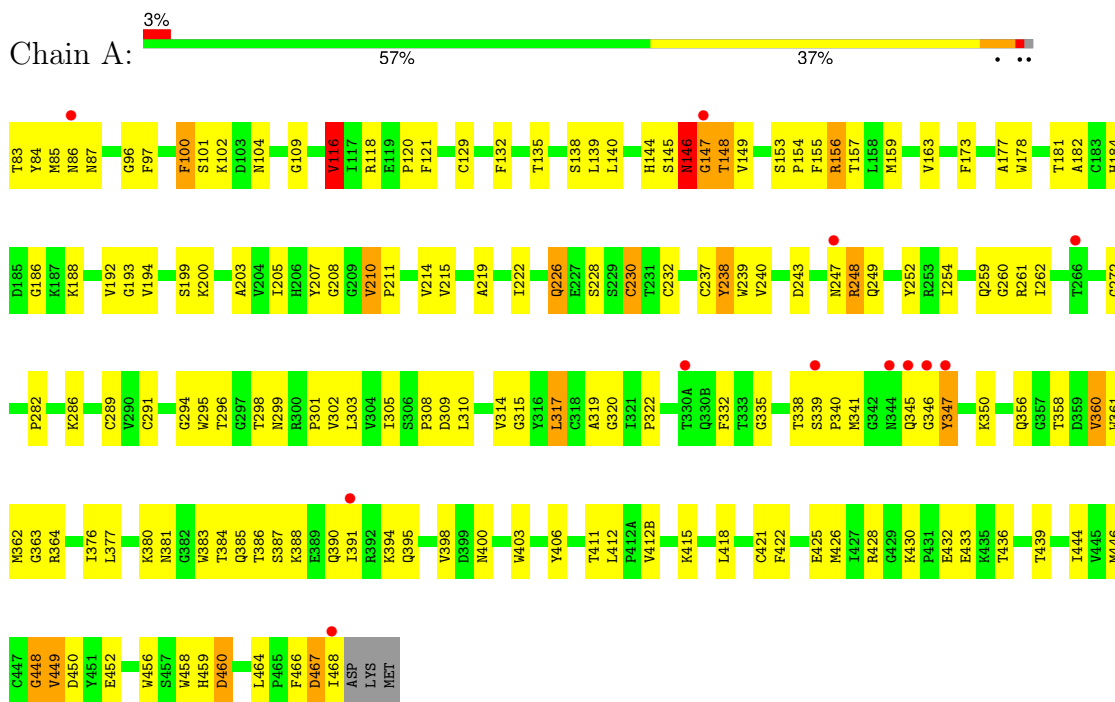
- Molecule 4 is water.

Mol	Chain	Residues	Atoms		ZeroOcc	AltConf
4	A	155	Total 155	O 155	0	0

3 Residue-property plots

These plots are drawn for all protein, RNA, DNA and oligosaccharide chains in the entry. The first graphic for a chain summarises the proportions of the various outlier classes displayed in the second graphic. The second graphic shows the sequence view annotated by issues in geometry and electron density. Residues are color-coded according to the number of geometric quality criteria for which they contain at least one outlier: green = 0, yellow = 1, orange = 2 and red = 3 or more. A red dot above a residue indicates a poor fit to the electron density ($RSRZ > 2$). Stretches of 2 or more consecutive residues without any outlier are shown as a green connector. Residues present in the sample, but not in the model, are shown in grey.

- Molecule 1: Neuraminidase



4 Data and refinement statistics i

Property	Value	Source
Space group	I 4	Depositor
Cell constants a, b, c, α , β , γ	90.52Å 90.52Å 108.87Å 90.00° 90.00° 90.00°	Depositor
Resolution (Å)	30.00 – 2.40 30.00 – 2.41	Depositor EDS
% Data completeness (in resolution range)	(Not available) (30.00-2.40) 94.2 (30.00-2.41)	Depositor EDS
R_{merge}	(Not available)	Depositor
R_{sym}	0.10	Depositor
$\langle I/\sigma(I) \rangle$ ¹	2.31 (at 2.41Å)	Xtrriage
Refinement program	CNS 1.1	Depositor
R, R_{free}	0.217 , 0.261 0.215 , 0.209	Depositor DCC
R_{free} test set	814 reflections (5.03%)	wwPDB-VP
Wilson B-factor (Å ²)	29.9	Xtrriage
Anisotropy	1.132	Xtrriage
Bulk solvent k_{sol} (e/Å ³), B_{sol} (Å ²)	0.38 , 49.3	EDS
L-test for twinning ²	$\langle L \rangle = 0.50$, $\langle L^2 \rangle = 0.34$	Xtrriage
Estimated twinning fraction	0.045 for -h,k,-l	Xtrriage
F_o, F_c correlation	0.92	EDS
Total number of atoms	3169	wwPDB-VP
Average B, all atoms (Å ²)	32.0	wwPDB-VP

Xtrriage's analysis on translational NCS is as follows: *The largest off-origin peak in the Patterson function is 6.96% of the height of the origin peak. No significant pseudotranslation is detected.*

¹Intensities estimated from amplitudes.

²Theoretical values of $\langle |L| \rangle$, $\langle L^2 \rangle$ for acentric reflections are 0.5, 0.333 respectively for untwinned datasets, and 0.375, 0.2 for perfectly twinned datasets.

5 Model quality [i](#)

5.1 Standard geometry [i](#)

Bond lengths and bond angles in the following residue types are not validated in this section: CA, NDG

The Z score for a bond length (or angle) is the number of standard deviations the observed value is removed from the expected value. A bond length (or angle) with $|Z| > 5$ is considered an outlier worth inspection. RMSZ is the root-mean-square of all Z scores of the bond lengths (or angles).

Mol	Chain	Bond lengths		Bond angles	
		RMSZ	# Z >5	RMSZ	# Z >5
1	A	0.37	0/3073	0.69	2/4171 (0.0%)

There are no bond length outliers.

All (2) bond angle outliers are listed below:

Mol	Chain	Res	Type	Atoms	Z	Observed(°)	Ideal(°)
1	A	116	VAL	N-CA-C	-5.11	97.20	111.00
1	A	226	GLN	N-CA-C	5.07	124.68	111.00

There are no chirality outliers.

There are no planarity outliers.

5.2 Too-close contacts [i](#)

In the following table, the Non-H and H(model) columns list the number of non-hydrogen atoms and hydrogen atoms in the chain respectively. The H(added) column lists the number of hydrogen atoms added and optimized by MolProbity. The Clashes column lists the number of clashes within the asymmetric unit, whereas Symm-Clashes lists symmetry-related clashes.

Mol	Chain	Non-H	H(model)	H(added)	Clashes	Symm-Clashes
1	A	2998	0	2861	146	0
2	A	15	0	12	2	0
3	A	1	0	0	0	0
4	A	155	0	0	21	0
All	All	3169	0	2873	147	0

The all-atom clashscore is defined as the number of clashes found per 1000 atoms (including hydrogen atoms). The all-atom clashscore for this structure is 25.

All (147) close contacts within the same asymmetric unit are listed below, sorted by their clash magnitude.

Atom-1	Atom-2	Interatomic distance (Å)	Clash overlap (Å)
1:A:85:MET:HE2	1:A:87:ASN:HD21	1.29	0.95
1:A:358:THR:HG22	1:A:381:ASN:HA	1.47	0.92
1:A:360:VAL:HG13	1:A:383:TRP:HB2	1.50	0.92
1:A:403:TRP:CH2	1:A:432:GLU:HG2	2.09	0.87
1:A:184:HIS:HD2	1:A:186:GLY:H	1.20	0.87
1:A:464:LEU:HG	4:A:1114:HOH:O	1.76	0.85
1:A:184:HIS:CD2	1:A:186:GLY:H	1.99	0.81
1:A:296:THR:HG22	4:A:1015:HOH:O	1.79	0.81
1:A:146:ASN:HD21	2:A:472:NDG:C1	1.96	0.77
2:A:472:NDG:H2	4:A:1050:HOH:O	1.86	0.76
1:A:298:THR:HG22	1:A:345:GLN:HB2	1.69	0.75
1:A:386:THR:HG22	4:A:1035:HOH:O	1.86	0.74
1:A:448:GLY:O	1:A:449:VAL:HB	1.86	0.74
1:A:426:MET:CE	1:A:459:HIS:HA	2.18	0.74
1:A:226:GLN:HE21	1:A:240:VAL:H	1.34	0.73
1:A:85:MET:CE	1:A:87:ASN:HD21	2.03	0.71
1:A:380:LYS:HB2	1:A:391:ILE:HD11	1.73	0.70
1:A:376:ILE:HG13	4:A:1125:HOH:O	1.92	0.70
1:A:282:PRO:HG2	1:A:418:LEU:HD13	1.74	0.69
1:A:249:GLN:HE21	1:A:295:TRP:HZ3	1.42	0.68
1:A:181:THR:HG22	1:A:192:VAL:HB	1.76	0.67
1:A:228:SER:HB3	1:A:350:LYS:HE2	1.77	0.66
1:A:96:GLY:O	1:A:448:GLY:O	2.14	0.66
1:A:135:THR:HB	4:A:1031:HOH:O	1.95	0.66
1:A:450:ASP:HB3	4:A:1043:HOH:O	1.95	0.65
1:A:466:PHE:C	1:A:468:ILE:H	2.01	0.64
1:A:308:PRO:HG2	4:A:1124:HOH:O	1.97	0.64
1:A:412(B):VAL:HG13	1:A:415:LYS:O	1.98	0.63
1:A:467:ASP:O	1:A:468:ILE:HB	1.99	0.63
1:A:338:THR:HG22	1:A:339:SER:N	2.13	0.62
1:A:184:HIS:HD2	1:A:186:GLY:N	1.96	0.62
1:A:261:ARG:HD2	4:A:1027:HOH:O	2.00	0.60
1:A:360:VAL:CG1	1:A:383:TRP:HE3	2.14	0.60
1:A:135:THR:O	1:A:156:ARG:HA	2.01	0.60
1:A:466:PHE:C	1:A:468:ILE:N	2.55	0.60
1:A:116:VAL:CG1	1:A:138:SER:HB2	2.32	0.60
1:A:430:LYS:HB2	1:A:439:THR:OG1	2.02	0.60
1:A:97:PHE:H	1:A:395:GLN:HE22	1.48	0.59
1:A:254:ILE:HD13	1:A:305:ILE:HG12	1.85	0.59
1:A:228:SER:HB3	1:A:350:LYS:CE	2.35	0.57

Continued on next page...

Continued from previous page...

Atom-1	Atom-2	Interatomic distance (Å)	Clash overlap (Å)
1:A:362:MET:N	4:A:1125:HOH:O	2.38	0.56
1:A:412:LEU:HG	1:A:421:CYS:SG	2.46	0.56
1:A:426:MET:HE2	1:A:459:HIS:HA	1.86	0.56
1:A:385:GLN:C	1:A:387:SER:H	2.07	0.56
1:A:146:ASN:O	1:A:148:THR:N	2.38	0.56
1:A:129:CYS:C	1:A:163:VAL:HG23	2.26	0.56
1:A:466:PHE:O	1:A:468:ILE:N	2.39	0.55
1:A:248:ARG:HB2	4:A:1118:HOH:O	2.06	0.55
1:A:320:GLY:HA2	1:A:335:GLY:HA3	1.89	0.55
1:A:394:LYS:NZ	4:A:1060:HOH:O	2.40	0.55
1:A:188:LYS:HD3	1:A:208:GLY:HA3	1.87	0.55
1:A:129:CYS:O	1:A:163:VAL:HG23	2.07	0.54
1:A:249:GLN:NE2	1:A:272:GLY:H	2.05	0.54
1:A:360:VAL:CG1	1:A:383:TRP:HB2	2.31	0.54
1:A:289:CYS:HB2	1:A:303:LEU:HD23	1.90	0.54
1:A:116:VAL:HG11	1:A:138:SER:HB2	1.90	0.53
1:A:86:ASN:HB2	4:A:1061:HOH:O	2.08	0.53
1:A:339:SER:HB3	1:A:340:PRO:HD2	1.89	0.53
1:A:452:GLU:HB2	4:A:1101:HOH:O	2.08	0.53
1:A:289:CYS:HB2	1:A:303:LEU:CD2	2.38	0.53
1:A:102:LYS:NZ	1:A:104:ASN:ND2	2.57	0.53
1:A:214:VAL:CG1	1:A:215:VAL:N	2.71	0.53
1:A:294:GLY:HA3	4:A:998:HOH:O	2.08	0.53
1:A:205:ILE:HD12	1:A:205:ILE:N	2.24	0.52
1:A:428:ARG:HG3	1:A:460:ASP:OD1	2.09	0.52
1:A:153:SER:HB2	1:A:154:PRO:HD2	1.92	0.52
1:A:215:VAL:CG2	1:A:262:ILE:HD11	2.39	0.52
1:A:360:VAL:HG12	1:A:383:TRP:HE3	1.75	0.51
1:A:298:THR:CG2	1:A:345:GLN:HB2	2.37	0.51
1:A:376:ILE:CG1	4:A:1125:HOH:O	2.56	0.51
1:A:291:CYS:HB2	1:A:301:PRO:HG2	1.92	0.51
1:A:426:MET:HE1	1:A:459:HIS:HA	1.91	0.51
1:A:214:VAL:HG12	1:A:215:VAL:N	2.26	0.50
1:A:155:PHE:O	1:A:157:THR:HG23	2.12	0.50
1:A:226:GLN:NE2	1:A:239:TRP:HB2	2.27	0.50
1:A:226:GLN:HE22	1:A:239:TRP:HA	1.77	0.50
1:A:100:PHE:C	1:A:100:PHE:CD1	2.86	0.49
1:A:207:TYR:CE1	1:A:259:GLN:HA	2.47	0.49
1:A:207:TYR:CZ	1:A:259:GLN:HA	2.47	0.49
1:A:358:THR:HG23	1:A:384:THR:OG1	2.11	0.49
1:A:144:HIS:C	1:A:146:ASN:H	2.15	0.49

Continued on next page...

Continued from previous page...

Atom-1	Atom-2	Interatomic distance (Å)	Clash overlap (Å)
1:A:194:VAL:HA	1:A:203:ALA:HA	1.95	0.49
1:A:398:VAL:HG21	1:A:426:MET:HE3	1.94	0.49
1:A:215:VAL:HG22	1:A:262:ILE:CD1	2.43	0.48
1:A:232:CYS:HA	1:A:237:CYS:HA	1.95	0.48
1:A:100:PHE:C	1:A:100:PHE:HD1	2.16	0.48
1:A:247:ASN:HB2	1:A:248:ARG:H	1.42	0.48
1:A:97:PHE:N	1:A:395:GLN:HE22	2.12	0.48
1:A:138:SER:C	1:A:139:LEU:HD23	2.34	0.48
1:A:210:VAL:HG22	1:A:211:PRO:HD2	1.96	0.48
1:A:226:GLN:NE2	1:A:240:VAL:H	2.08	0.48
1:A:177:ALA:HB2	1:A:193:GLY:CA	2.44	0.47
1:A:247:ASN:O	1:A:248:ARG:O	2.32	0.47
1:A:83:THR:HG22	1:A:84:TYR:N	2.29	0.47
1:A:215:VAL:HG22	1:A:262:ILE:HD11	1.95	0.47
1:A:145:SER:O	1:A:147:GLY:N	2.49	0.46
1:A:406:TYR:HB2	1:A:425:GLU:OE1	2.16	0.46
1:A:436:THR:HG21	1:A:464:LEU:HD13	1.97	0.46
1:A:207:TYR:HB2	1:A:260:GLY:HA3	1.97	0.46
1:A:317:LEU:HD21	1:A:360:VAL:HG11	1.96	0.46
1:A:403:TRP:CZ3	1:A:432:GLU:HG2	2.48	0.46
1:A:226:GLN:NE2	1:A:239:TRP:HA	2.31	0.46
1:A:85:MET:HE2	1:A:87:ASN:ND2	2.12	0.46
1:A:421:CYS:HB3	1:A:446:MET:O	2.17	0.45
1:A:205:ILE:HD11	1:A:215:VAL:HG23	1.97	0.45
1:A:346:GLY:O	1:A:347:TYR:O	2.34	0.45
1:A:182:ALA:C	1:A:230:CYS:SG	2.95	0.45
1:A:199:SER:C	1:A:200:LYS:HG3	2.37	0.45
1:A:199:SER:O	1:A:200:LYS:HG3	2.16	0.45
1:A:380:LYS:CB	1:A:391:ILE:HD11	2.43	0.45
1:A:149:VAL:HG23	4:A:1087:HOH:O	2.16	0.44
1:A:444:ILE:HG21	1:A:458:TRP:O	2.17	0.44
1:A:238:TYR:N	1:A:238:TYR:CD1	2.84	0.44
1:A:138:SER:O	1:A:139:LEU:HD23	2.18	0.44
1:A:121:PHE:CG	1:A:228:SER:HA	2.53	0.44
1:A:444:ILE:O	1:A:444:ILE:HG13	2.17	0.44
1:A:101:SER:OG	1:A:163:VAL:HG12	2.18	0.44
1:A:146:ASN:C	1:A:148:THR:H	2.21	0.44
1:A:299:ASN:HB3	1:A:332:PHE:HZ	1.83	0.44
1:A:433:GLU:CD	1:A:464:LEU:HD12	2.38	0.44
1:A:219:ALA:HB3	1:A:243:ASP:CG	2.39	0.43
1:A:309:ASP:OD1	1:A:309:ASP:C	2.56	0.43

Continued on next page...

Continued from previous page...

Atom-1	Atom-2	Interatomic distance (Å)	Clash overlap (Å)
1:A:102:LYS:HZ2	1:A:104:ASN:ND2	2.17	0.43
1:A:339:SER:CB	1:A:340:PRO:HD2	2.49	0.43
1:A:109:GLY:HA3	1:A:140:LEU:HD12	2.00	0.43
1:A:468:ILE:HG12	4:A:1005:HOH:O	2.19	0.42
1:A:249:GLN:NE2	1:A:272:GLY:N	2.67	0.42
1:A:363:GLY:O	1:A:364:ARG:HB3	2.19	0.42
1:A:261:ARG:NH1	4:A:1121:HOH:O	2.52	0.42
1:A:249:GLN:HE21	1:A:272:GLY:H	1.66	0.42
1:A:356:GLN:HG3	1:A:361:TRP:CD1	2.55	0.41
1:A:100:PHE:HD1	1:A:100:PHE:O	2.03	0.41
1:A:177:ALA:HB2	1:A:193:GLY:HA3	2.03	0.41
1:A:322:PRO:HD3	1:A:332:PHE:CG	2.55	0.41
1:A:188:LYS:HD3	1:A:208:GLY:CA	2.51	0.41
1:A:302:VAL:O	1:A:314:VAL:HA	2.20	0.41
1:A:390:GLN:HB3	4:A:1104:HOH:O	2.19	0.41
1:A:159:MET:HG2	1:A:173:PHE:HA	2.03	0.41
1:A:422:PHE:CZ	1:A:446:MET:HG3	2.56	0.41
1:A:145:SER:C	1:A:147:GLY:H	2.24	0.41
1:A:286:LYS:HD2	4:A:1149:HOH:O	2.20	0.41
1:A:120:PRO:HA	1:A:132:PHE:O	2.21	0.41
1:A:156:ARG:HG2	1:A:178:TRP:HA	2.03	0.40
1:A:299:ASN:HB3	1:A:332:PHE:CZ	2.57	0.40
1:A:332:PHE:CE1	1:A:341:MET:HB2	2.56	0.40
1:A:385:GLN:C	1:A:387:SER:N	2.72	0.40
1:A:301:PRO:HA	1:A:315:GLY:O	2.22	0.40

There are no symmetry-related clashes.

5.3 Torsion angles [i](#)

5.3.1 Protein backbone [i](#)

In the following table, the Percentiles column shows the percent Ramachandran outliers of the chain as a percentile score with respect to all X-ray entries followed by that with respect to entries of similar resolution.

The Analysed column shows the number of residues for which the backbone conformation was analysed, and the total number of residues.

Mol	Chain	Analysed	Favoured	Allowed	Outliers	Percentiles
1	A	385/390 (99%)	343 (89%)	32 (8%)	10 (3%)	4 4

All (10) Ramachandran outliers are listed below:

Mol	Chain	Res	Type
1	A	248	ARG
1	A	347	TYR
1	A	448	GLY
1	A	146	ASN
1	A	147	GLY
1	A	449	VAL
1	A	319	ALA
1	A	460	ASP
1	A	467	ASP
1	A	222	ILE

5.3.2 Protein sidechains [i](#)

In the following table, the Percentiles column shows the percent sidechain outliers of the chain as a percentile score with respect to all X-ray entries followed by that with respect to entries of similar resolution.

The Analysed column shows the number of residues for which the sidechain conformation was analysed, and the total number of residues.

Mol	Chain	Analysed	Rotameric	Outliers	Percentiles
1	A	329/332 (99%)	311 (94%)	18 (6%)	18 31

All (18) residues with a non-rotameric sidechain are listed below:

Mol	Chain	Res	Type
1	A	100	PHE
1	A	116	VAL
1	A	118	ARG
1	A	146	ASN
1	A	148	THR
1	A	156	ARG
1	A	210	VAL
1	A	230	CYS
1	A	238	TYR
1	A	252	TYR
1	A	310	LEU
1	A	317	LEU
1	A	360	VAL
1	A	377	LEU
1	A	388	LYS

Continued on next page...

Continued from previous page...

Mol	Chain	Res	Type
1	A	400	ASN
1	A	411	THR
1	A	456	TRP

Sometimes sidechains can be flipped to improve hydrogen bonding and reduce clashes. All (9) such sidechains are listed below:

Mol	Chain	Res	Type
1	A	87	ASN
1	A	104	ASN
1	A	144	HIS
1	A	146	ASN
1	A	184	HIS
1	A	226	GLN
1	A	249	GLN
1	A	395	GLN
1	A	400	ASN

5.3.3 RNA [i](#)

There are no RNA molecules in this entry.

5.4 Non-standard residues in protein, DNA, RNA chains [i](#)

There are no non-standard protein/DNA/RNA residues in this entry.

5.5 Carbohydrates [i](#)

There are no oligosaccharides in this entry.

5.6 Ligand geometry [i](#)

Of 2 ligands modelled in this entry, 1 is monoatomic - leaving 1 for Mogul analysis.

In the following table, the Counts columns list the number of bonds (or angles) for which Mogul statistics could be retrieved, the number of bonds (or angles) that are observed in the model and the number of bonds (or angles) that are defined in the Chemical Component Dictionary. The Link column lists molecule types, if any, to which the group is linked. The Z score for a bond length (or angle) is the number of standard deviations the observed value is removed from the expected value. A bond length (or angle) with $|Z| > 2$ is considered an outlier worth inspection. RMSZ is the root-mean-square of all Z scores of the bond lengths (or angles).

Mol	Type	Chain	Res	Link	Bond lengths			Bond angles		
					Counts	RMSZ	# Z > 2	Counts	RMSZ	# Z > 2
2	NDG	A	472	-	15,15,15	0.69	0	21,21,21	0.71	0

In the following table, the Chirals column lists the number of chiral outliers, the number of chiral centers analysed, the number of these observed in the model and the number defined in the Chemical Component Dictionary. Similar counts are reported in the Torsion and Rings columns. '-' means no outliers of that kind were identified.

Mol	Type	Chain	Res	Link	Chirals	Torsions	Rings
2	NDG	A	472	-	-	2/6/26/26	0/1/1/1

There are no bond length outliers.

There are no bond angle outliers.

There are no chirality outliers.

All (2) torsion outliers are listed below:

Mol	Chain	Res	Type	Atoms
2	A	472	NDG	C4-C5-C6-O6
2	A	472	NDG	O5-C5-C6-O6

There are no ring outliers.

1 monomer is involved in 2 short contacts:

Mol	Chain	Res	Type	Clashes	Symm-Clashes
2	A	472	NDG	2	0

5.7 Other polymers [i](#)

There are no such residues in this entry.

5.8 Polymer linkage issues [i](#)

There are no chain breaks in this entry.

6 Fit of model and data [i](#)

6.1 Protein, DNA and RNA chains [i](#)

In the following table, the column labelled ‘#RSRZ> 2’ contains the number (and percentage) of RSRZ outliers, followed by percent RSRZ outliers for the chain as percentile scores relative to all X-ray entries and entries of similar resolution. The OWAB column contains the minimum, median, 95th percentile and maximum values of the occupancy-weighted average B-factor per residue. The column labelled ‘Q< 0.9’ lists the number of (and percentage) of residues with an average occupancy less than 0.9.

Mol	Chain	Analysed	<RSRZ>	#RSRZ>2	OWAB(Å ²)	Q<0.9
1	A	387/390 (99%)	0.25	12 (3%) 51 48	19, 31, 46, 55	0

All (12) RSRZ outliers are listed below:

Mol	Chain	Res	Type	RSRZ
1	A	330(A)	THR	2.8
1	A	344	ASN	2.7
1	A	391	ILE	2.7
1	A	86	ASN	2.6
1	A	468	ILE	2.4
1	A	346	GLY	2.4
1	A	347	TYR	2.4
1	A	339	SER	2.4
1	A	345	GLN	2.3
1	A	147	GLY	2.3
1	A	247	ASN	2.3
1	A	266	THR	2.1

6.2 Non-standard residues in protein, DNA, RNA chains [i](#)

There are no non-standard protein/DNA/RNA residues in this entry.

6.3 Carbohydrates [i](#)

There are no monosaccharides in this entry.

6.4 Ligands [i](#)

In the following table, the Atoms column lists the number of modelled atoms in the group and the number defined in the chemical component dictionary. The B-factors column lists the minimum,

median, 95th percentile and maximum values of B factors of atoms in the group. The column labelled 'Q< 0.9' lists the number of atoms with occupancy less than 0.9.

Mol	Type	Chain	Res	Atoms	RSCC	RSR	B-factors(Å ²)	Q<0.9
2	NDG	A	472	15/15	0.30	0.23	79,81,83,83	0
3	CA	A	995	1/1	0.93	0.06	49,49,49,49	0

6.5 Other polymers [\(i\)](#)

There are no such residues in this entry.