



Full wwPDB X-ray Structure Validation Report ⓘ

Nov 22, 2018 – 08:09 AM EST

PDB ID : 6HU0
Title : Crystal structure of Schistosoma mansoni HDAC8 complexed with a benzohydroxamate inhibitor 9
Authors : Shaik, T.B.; Marek, M.; Romier, C.
Deposited on : 2018-10-05
Resolution : 1.75 Å(reported)

This is a Full wwPDB X-ray Structure Validation Report for a publicly released PDB entry.

We welcome your comments at validation@mail.wwpdb.org

A user guide is available at

<https://www.wwpdb.org/validation/2017/XrayValidationReportHelp>

with specific help available everywhere you see the ⓘ symbol.

The following versions of software and data (see [references ⓘ](#)) were used in the production of this report:

MolProbity : 4.02b-467
Mogul : 1.7.3 (157068), CSD as539be (2018)
Xtriage (Phenix) : 1.13
EDS : rb-20031633
Percentile statistics : 20171227.v01 (using entries in the PDB archive December 27th 2017)
Refmac : 5.8.0158
CCP4 : 7.0 (Gargrove)
Ideal geometry (proteins) : Engh & Huber (2001)
Ideal geometry (DNA, RNA) : Parkinson et al. (1996)
Validation Pipeline (wwPDB-VP) : rb-20031633

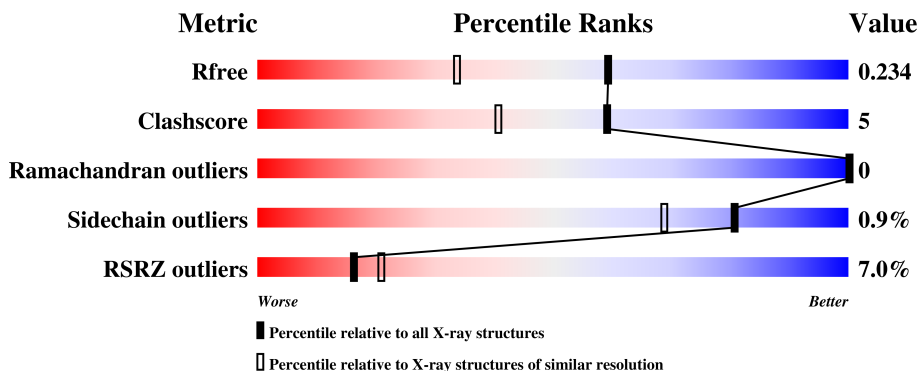
1 Overall quality at a glance

The following experimental techniques were used to determine the structure:

X-RAY DIFFRACTION

The reported resolution of this entry is 1.75 Å.

Percentile scores (ranging between 0-100) for global validation metrics of the entry are shown in the following graphic. The table shows the number of entries on which the scores are based.



Metric	Whole archive (#Entries)	Similar resolution (#Entries, resolution range(Å))
R_{free}	111664	3053 (1.76-1.72)
Clashscore	122126	3201 (1.76-1.72)
Ramachandran outliers	120053	3169 (1.76-1.72)
Sidechain outliers	120020	3169 (1.76-1.72)
RSRZ outliers	108989	2999 (1.76-1.72)

The table below summarises the geometric issues observed across the polymeric chains and their fit to the electron density. The red, orange, yellow and green segments on the lower bar indicate the fraction of residues that contain outliers for ≥ 3 , 2, 1 and 0 types of geometric quality criteria. A grey segment represents the fraction of residues that are not modelled. The numeric value for each fraction is indicated below the corresponding segment, with a dot representing fractions $\leq 5\%$. The upper red bar (where present) indicates the fraction of residues that have poor fit to the electron density. The numeric value is given above the bar.

Mol	Chain	Length	Quality of chain
1	A	447	 7% 81% 5% 13%
1	B	447	 7% 84% 8% 8%
1	C	447	 5% 80% 11% 9%
1	D	447	 6% 80% 6% 14%

The following table lists non-polymeric compounds, carbohydrate monomers and non-standard

residues in protein, DNA, RNA chains that are outliers for geometric or electron-density-fit criteria:

Mol	Type	Chain	Res	Chirality	Geometry	Clashes	Electron density
5	DMF	B	507	-	-	X	-
5	DMF	B	512	-	-	X	-
5	DMF	C	506	-	-	X	-
5	DMF	C	507	-	-	X	-
6	GOL	C	526	-	-	-	X
6	GOL	D	512	-	-	-	X

2 Entry composition i

There are 7 unique types of molecules in this entry. The entry contains 14728 atoms, of which 0 are hydrogens and 0 are deuteriums.

In the tables below, the ZeroOcc column contains the number of atoms modelled with zero occupancy, the AltConf column contains the number of residues with at least one atom in alternate conformation and the Trace column contains the number of residues modelled with at most 2 atoms.

- Molecule 1 is a protein called Histone deacetylase.

Mol	Chain	Residues	Atoms					ZeroOcc	AltConf	Trace
			Total	C	N	O	S			
1	A	387	3100	1999	519	566	16	0	3	0
1	B	411	3295	2123	550	606	16	0	2	0
1	C	406	3247	2094	544	594	15	0	2	0
1	D	386	3084	1987	516	565	16	0	4	0

There are 28 discrepancies between the modelled and reference sequences:

Chain	Residue	Modelled	Actual	Comment	Reference
A	0	HIS	-	expression tag	UNP A5H660
A	441	GLY	-	expression tag	UNP A5H660
A	442	SER	-	expression tag	UNP A5H660
A	443	LEU	-	expression tag	UNP A5H660
A	444	VAL	-	expression tag	UNP A5H660
A	445	PRO	-	expression tag	UNP A5H660
A	446	ARG	-	expression tag	UNP A5H660
B	0	HIS	-	expression tag	UNP A5H660
B	441	GLY	-	expression tag	UNP A5H660
B	442	SER	-	expression tag	UNP A5H660
B	443	LEU	-	expression tag	UNP A5H660
B	444	VAL	-	expression tag	UNP A5H660
B	445	PRO	-	expression tag	UNP A5H660
B	446	ARG	-	expression tag	UNP A5H660
C	0	HIS	-	expression tag	UNP A5H660
C	441	GLY	-	expression tag	UNP A5H660
C	442	SER	-	expression tag	UNP A5H660
C	443	LEU	-	expression tag	UNP A5H660
C	444	VAL	-	expression tag	UNP A5H660
C	445	PRO	-	expression tag	UNP A5H660
C	446	ARG	-	expression tag	UNP A5H660

Continued on next page...

Continued from previous page...

Chain	Residue	Modelled	Actual	Comment	Reference
D	0	HIS	-	expression tag	UNP A5H660
D	441	GLY	-	expression tag	UNP A5H660
D	442	SER	-	expression tag	UNP A5H660
D	443	LEU	-	expression tag	UNP A5H660
D	444	VAL	-	expression tag	UNP A5H660
D	445	PRO	-	expression tag	UNP A5H660
D	446	ARG	-	expression tag	UNP A5H660

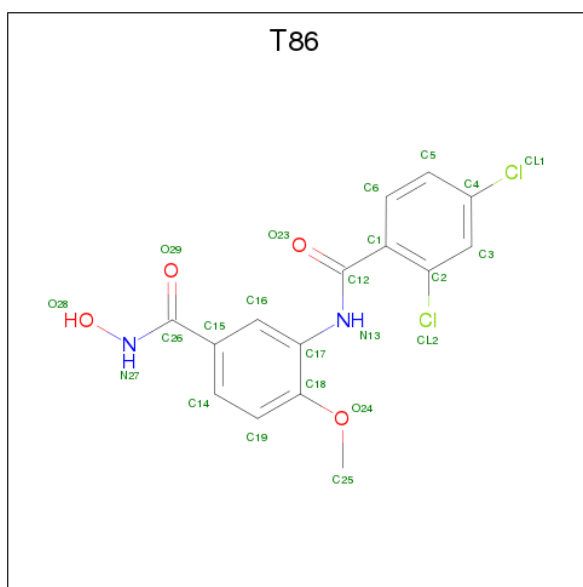
- Molecule 2 is ZINC ION (three-letter code: ZN) (formula: Zn).

Mol	Chain	Residues	Atoms	ZeroOcc	AltConf
2	B	1	Total Zn 1 1	0	0
2	A	1	Total Zn 1 1	0	0
2	D	1	Total Zn 1 1	0	0
2	C	1	Total Zn 1 1	0	0

- Molecule 3 is POTASSIUM ION (three-letter code: K) (formula: K).

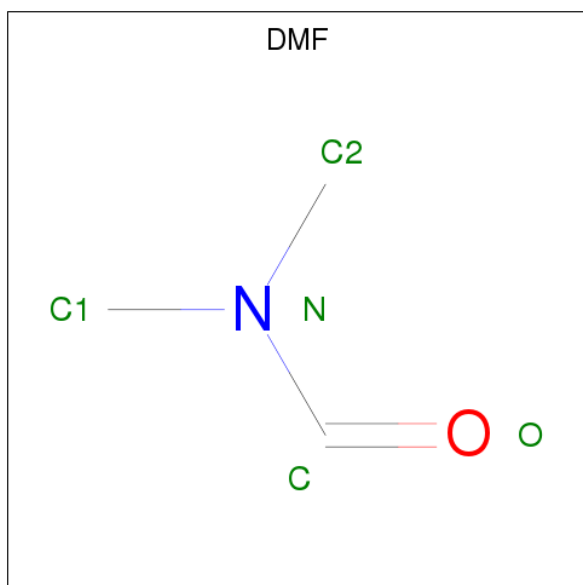
Mol	Chain	Residues	Atoms	ZeroOcc	AltConf
3	B	2	Total K 2 2	0	0
3	A	2	Total K 2 2	0	0
3	D	2	Total K 2 2	0	0
3	C	2	Total K 2 2	0	0

- Molecule 4 is 3-[(2,4-dichlorophenyl)carbonylamino]-4-methoxy- {N}-oxidanyl-benzamide (three-letter code: T86) (formula: C₁₅H₁₂Cl₂N₂O₄).



Mol	Chain	Residues	Atoms				ZeroOcc	AltConf	
			Total	C	Cl	N			O
4	A	1	Total	C	Cl	N	O	0	0
			23	15	2	2	4		
4	B	1	Total	C	Cl	N	O	0	0
			23	15	2	2	4		
4	C	1	Total	C	Cl	N	O	0	0
			23	15	2	2	4		
4	D	1	Total	C	Cl	N	O	0	0
			23	15	2	2	4		

- Molecule 5 is DIMETHYLFORMAMIDE (three-letter code: DMF) (formula: C_3H_7NO).



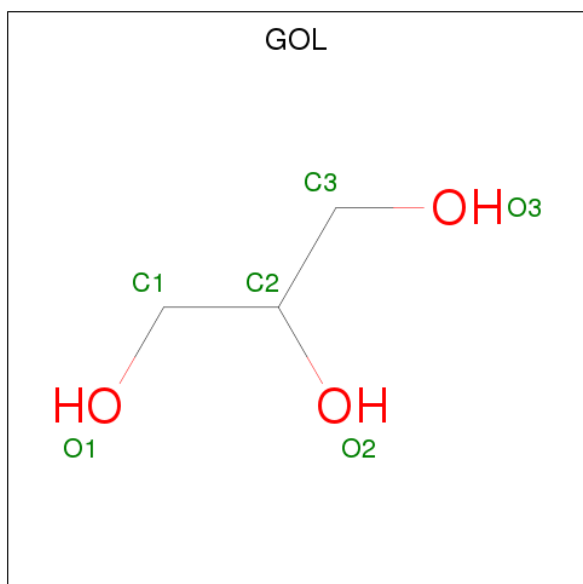
Mol	Chain	Residues	Atoms				ZeroOcc	AltConf
5	A	1	Total	C	N	O	0	0
			5	3	1	1		
5	A	1	Total	C	N	O	0	0
			5	3	1	1		
5	A	1	Total	C	N	O	0	0
			5	3	1	1		
5	B	1	Total	C	N	O	0	0
			5	3	1	1		
5	B	1	Total	C	N	O	0	0
			5	3	1	1		
5	B	1	Total	C	N	O	0	0
			5	3	1	1		
5	B	1	Total	C	N	O	0	0
			5	3	1	1		
5	B	1	Total	C	N	O	0	0
			5	3	1	1		
5	B	1	Total	C	N	O	0	0
			5	3	1	1		
5	B	1	Total	C	N	O	0	0
			5	3	1	1		
5	B	1	Total	C	N	O	0	0
			5	3	1	1		
5	C	1	Total	C	N	O	0	0
			5	3	1	1		
5	C	1	Total	C	N	O	0	0
			5	3	1	1		
5	C	1	Total	C	N	O	0	0
			5	3	1	1		
5	C	1	Total	C	N	O	0	0
			5	3	1	1		
5	C	1	Total	C	N	O	0	0
			5	3	1	1		
5	C	1	Total	C	N	O	0	0
			5	3	1	1		
5	C	1	Total	C	N	O	0	0
			5	3	1	1		
5	C	1	Total	C	N	O	0	0
			5	3	1	1		
5	C	1	Total	C	N	O	0	0
			5	3	1	1		

Continued on next page...

Continued from previous page...

Mol	Chain	Residues	Atoms				ZeroOcc	AltConf
5	C	1	Total	C	N	O	0	0
			5	3	1	1		
5	D	1	Total	C	N	O	0	0
			5	3	1	1		
5	D	1	Total	C	N	O	0	0
			5	3	1	1		
5	D	1	Total	C	N	O	0	0
			5	3	1	1		
5	D	1	Total	C	N	O	0	0
			5	3	1	1		

- Molecule 6 is GLYCEROL (three-letter code: GOL) (formula: C₃H₈O₃).



Mol	Chain	Residues	Atoms			ZeroOcc	AltConf
6	A	1	Total	C	O	0	0
			6	3	3		
6	A	1	Total	C	O	0	0
			6	3	3		
6	A	1	Total	C	O	0	0
			6	3	3		
6	A	1	Total	C	O	0	0
			6	3	3		
6	A	1	Total	C	O	0	0
			6	3	3		

Continued on next page...

Continued from previous page...

Mol	Chain	Residues	Atoms			ZeroOcc	AltConf
6	A	1	Total 6	C 3	O 3	0	0
6	A	1	Total 6	C 3	O 3	0	0
6	A	1	Total 6	C 3	O 3	0	0
6	B	1	Total 6	C 3	O 3	0	0
6	B	1	Total 6	C 3	O 3	0	0
6	B	1	Total 6	C 3	O 3	0	0
6	B	1	Total 6	C 3	O 3	0	0
6	B	1	Total 6	C 3	O 3	0	0
6	B	1	Total 6	C 3	O 3	0	0
6	C	1	Total 6	C 3	O 3	0	0
6	C	1	Total 6	C 3	O 3	0	0
6	C	1	Total 6	C 3	O 3	0	0
6	C	1	Total 6	C 3	O 3	0	0
6	C	1	Total 6	C 3	O 3	0	0
6	C	1	Total 6	C 3	O 3	0	0
6	C	1	Total 6	C 3	O 3	0	0
6	C	1	Total 6	C 3	O 3	0	0
6	C	1	Total 6	C 3	O 3	0	0
6	C	1	Total 6	C 3	O 3	0	0
6	C	1	Total 6	C 3	O 3	0	0
6	D	1	Total 6	C 3	O 3	0	0
6	D	1	Total 6	C 3	O 3	0	0
6	D	1	Total 6	C 3	O 3	0	0

Continued on next page...

Continued from previous page...

Mol	Chain	Residues	Atoms			ZeroOcc	AltConf
			Total	C	O		
6	D	1	6	3	3	0	0

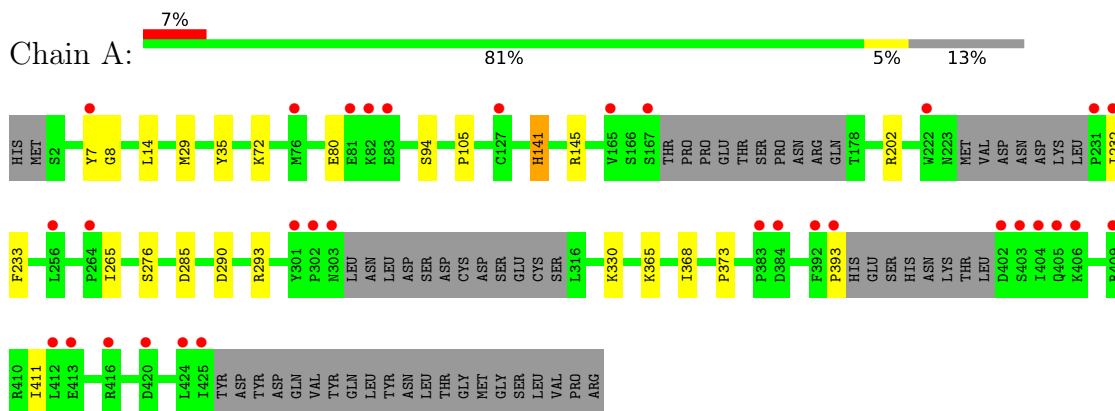
- Molecule 7 is water.

Mol	Chain	Residues	Atoms		ZeroOcc	AltConf
7	A	360	Total 360	O 360	0	0
7	B	425	Total 425	O 425	0	0
7	C	425	Total 425	O 425	0	0
7	D	386	Total 386	O 386	0	0

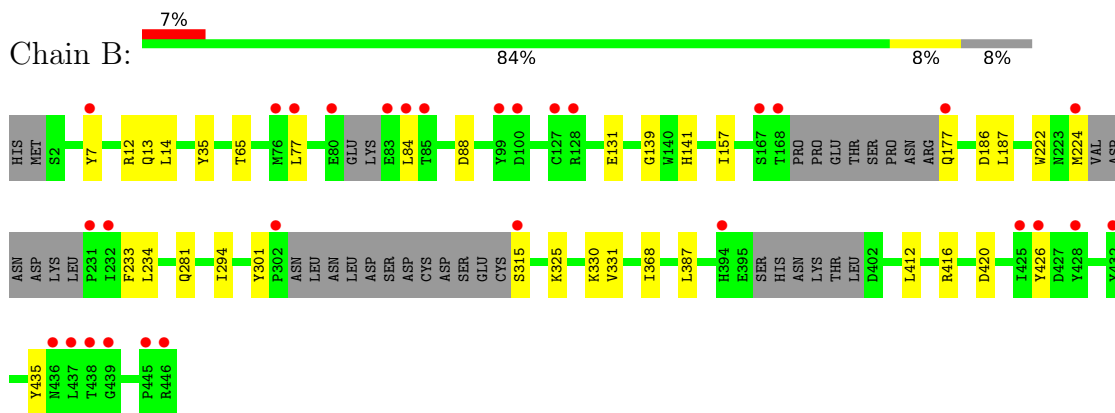
3 Residue-property plots [i](#)

These plots are drawn for all protein, RNA and DNA chains in the entry. The first graphic for a chain summarises the proportions of the various outlier classes displayed in the second graphic. The second graphic shows the sequence view annotated by issues in geometry and electron density. Residues are color-coded according to the number of geometric quality criteria for which they contain at least one outlier: green = 0, yellow = 1, orange = 2 and red = 3 or more. A red dot above a residue indicates a poor fit to the electron density ($RSRZ > 2$). Stretches of 2 or more consecutive residues without any outlier are shown as a green connector. Residues present in the sample, but not in the model, are shown in grey.

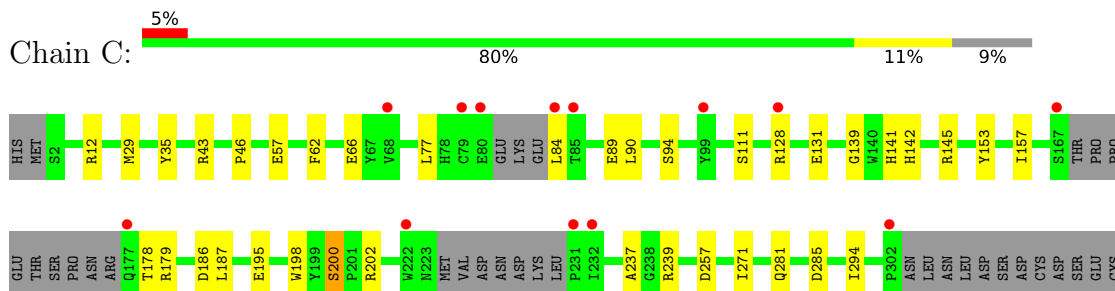
- Molecule 1: Histone deacetylase

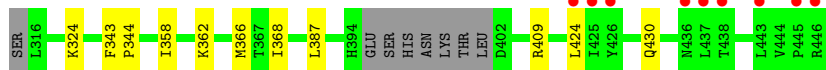


- Molecule 1: Histone deacetylase

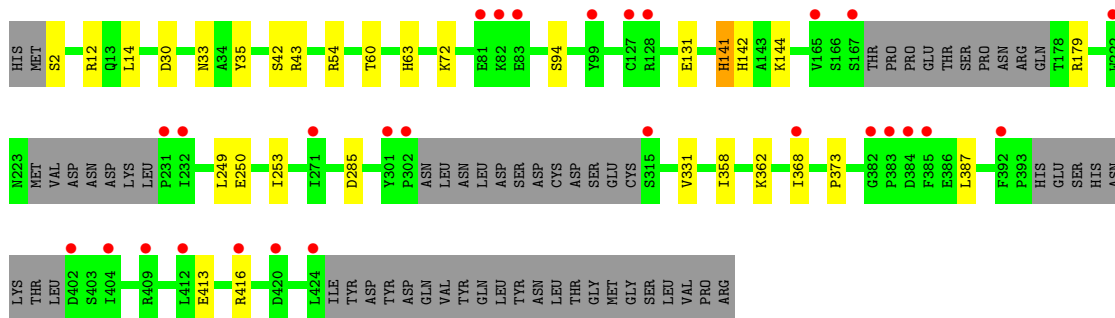
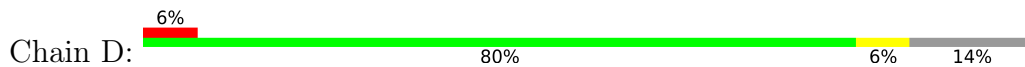


- Molecule 1: Histone deacetylase





● Molecule 1: Histone deacetylase



4 Data and refinement statistics

Property	Value	Source
Space group	P 1	Depositor
Cell constants a, b, c, α , β , γ	70.69Å 70.73Å 98.12Å 75.51° 78.08° 85.55°	Depositor
Resolution (Å)	47.99 – 1.75 47.99 – 1.75	Depositor EDS
% Data completeness (in resolution range)	95.8 (47.99-1.75) 95.8 (47.99-1.75)	Depositor EDS
R_{merge}	0.13	Depositor
R_{sym}	(Not available)	Depositor
$\langle I/\sigma(I) \rangle$ ¹	1.66 (at 1.75Å)	Xtrriage
Refinement program	PHENIX (1.10.1_2155: ???)	Depositor
R, R_{free}	0.189 , 0.226 0.196 , 0.234	Depositor DCC
R_{free} test set	8758 reflections (5.00%)	wwPDB-VP
Wilson B-factor (Å ²)	15.5	Xtrriage
Anisotropy	0.218	Xtrriage
Bulk solvent k_{sol} (e/Å ³), B_{sol} (Å ²)	0.35 , 54.9	EDS
L-test for twinning ²	$\langle L \rangle = 0.49$, $\langle L^2 \rangle = 0.32$	Xtrriage
Estimated twinning fraction	0.066 for -k,-h,-l	Xtrriage
F_o, F_c correlation	0.94	EDS
Total number of atoms	14728	wwPDB-VP
Average B, all atoms (Å ²)	20.0	wwPDB-VP

Xtrriage's analysis on translational NCS is as follows: *The largest off-origin peak in the Patterson function is 4.72% of the height of the origin peak. No significant pseudotranslation is detected.*

¹Intensities estimated from amplitudes.

²Theoretical values of $\langle |L| \rangle$, $\langle L^2 \rangle$ for acentric reflections are 0.5, 0.333 respectively for untwinned datasets, and 0.375, 0.2 for perfectly twinned datasets.

5 Model quality [i](#)

5.1 Standard geometry [i](#)

Bond lengths and bond angles in the following residue types are not validated in this section: GOL, ZN, K, DMF, T86

The Z score for a bond length (or angle) is the number of standard deviations the observed value is removed from the expected value. A bond length (or angle) with $|Z| > 5$ is considered an outlier worth inspection. RMSZ is the root-mean-square of all Z scores of the bond lengths (or angles).

Mol	Chain	Bond lengths		Bond angles	
		RMSZ	# Z >5	RMSZ	# Z >5
1	A	0.37	0/3193	0.52	0/4341
1	B	0.39	0/3390	0.53	0/4609
1	C	0.40	0/3344	0.54	0/4548
1	D	0.38	0/3182	0.52	0/4325
All	All	0.38	0/13109	0.53	0/17823

There are no bond length outliers.

There are no bond angle outliers.

There are no chirality outliers.

There are no planarity outliers.

5.2 Too-close contacts [i](#)

In the following table, the Non-H and H(model) columns list the number of non-hydrogen atoms and hydrogen atoms in the chain respectively. The H(added) column lists the number of hydrogen atoms added and optimized by MolProbity. The Clashes column lists the number of clashes within the asymmetric unit, whereas Symm-Clashes lists symmetry related clashes.

Mol	Chain	Non-H	H(model)	H(added)	Clashes	Symm-Clashes
1	A	3100	0	3007	20	0
1	B	3295	0	3182	36	0
1	C	3247	0	3146	43	0
1	D	3084	0	2997	25	0
2	A	1	0	0	0	0
2	B	1	0	0	0	0
2	C	1	0	0	0	0
2	D	1	0	0	0	0
3	A	2	0	0	0	0

Continued on next page...

Continued from previous page...

Mol	Chain	Non-H	H(model)	H(added)	Clashes	Symm-Clashes
3	B	2	0	0	0	0
3	C	2	0	0	0	0
3	D	2	0	0	0	0
4	A	23	0	0	0	0
4	B	23	0	0	0	0
4	C	23	0	0	1	0
4	D	23	0	0	1	0
5	A	15	0	21	2	0
5	B	40	0	56	12	0
5	C	60	0	82	20	0
5	D	25	0	35	4	0
6	A	48	0	64	7	0
6	B	30	0	40	3	0
6	C	60	0	78	8	0
6	D	24	0	32	1	0
7	A	360	0	0	5	1
7	B	425	0	0	6	1
7	C	425	0	0	10	1
7	D	386	0	0	6	1
All	All	14728	0	12740	131	2

The all-atom clashscore is defined as the number of clashes found per 1000 atoms (including hydrogen atoms). The all-atom clashscore for this structure is 5.

All (131) close contacts within the same asymmetric unit are listed below, sorted by their clash magnitude.

Atom-1	Atom-2	Interatomic distance (Å)	Clash overlap (Å)
5:C:506:DMF:H12	1:D:43:ARG:H	1.21	1.05
1:C:131:GLU:HB3	6:C:518:GOL:H2	1.51	0.89
1:A:94:SER:HA	6:A:510:GOL:H31	1.57	0.85
1:C:145:ARG:HE	5:C:508:DMF:H21	1.52	0.74
1:D:179:ARG:NH2	7:D:601:HOH:O	2.21	0.73
1:B:234:LEU:HB2	6:B:513:GOL:H31	1.71	0.72
1:A:365:LYS:NZ	7:A:602:HOH:O	2.22	0.71
1:D:144:LYS:NZ	7:D:603:HOH:O	2.23	0.70
1:C:366:MET:SD	6:C:521:GOL:H2	2.31	0.70
1:C:12:ARG:HH21	6:C:517:GOL:H12	1.57	0.69
1:B:35:TYR:CE1	1:B:368:ILE:HG23	2.29	0.68
1:C:409:ARG:HG2	6:C:522:GOL:H32	1.76	0.68
1:C:35:TYR:CE1	1:C:368:ILE:HG23	2.28	0.67
1:A:105:PRO:HB2	1:B:224:MET:HG2	1.75	0.67

Continued on next page...

Continued from previous page...

Atom-1	Atom-2	Interatomic distance (Å)	Clash overlap (Å)
1:A:72:LYS:NZ	7:A:605:HOH:O	2.28	0.66
1:C:237:ALA:HB2	5:C:516:DMF:H11	1.76	0.66
1:C:29:MET:HB3	5:C:505:DMF:H11	1.77	0.66
1:B:88:ASP:OD2	7:B:601:HOH:O	2.13	0.66
1:D:35:TYR:CE1	1:D:368:ILE:HG23	2.32	0.65
1:B:177:GLN:N	7:B:609:HOH:O	2.30	0.64
5:C:506:DMF:H12	1:D:43:ARG:N	2.04	0.64
1:C:179:ARG:NH1	7:C:609:HOH:O	2.28	0.64
1:B:14:LEU:HD12	6:B:514:GOL:H31	1.81	0.62
1:C:90:LEU:O	5:C:506:DMF:H22	1.99	0.62
1:C:43:ARG:HG3	5:C:507:DMF:H13	1.80	0.62
1:B:416:ARG:NH1	1:B:420:ASP:OD1	2.32	0.61
1:C:271:ILE:HD13	1:C:430:GLN:HG2	1.81	0.61
1:C:46:PRO:HB2	5:C:515:DMF:H21	1.83	0.61
1:C:66:GLU:OE2	7:C:602:HOH:O	2.17	0.60
1:D:358:ILE:HG23	1:D:362:LYS:HE3	1.84	0.60
1:D:12:ARG:NH2	1:D:30:ASP:OD1	2.33	0.59
1:A:232:ILE:HG12	1:A:233:PHE:H	1.68	0.59
1:D:14:LEU:HD12	6:D:510:GOL:H31	1.85	0.59
1:A:202:ARG:NH1	7:A:612:HOH:O	2.36	0.58
1:C:187:LEU:HD21	1:C:294:ILE:HD12	1.87	0.57
1:A:14:LEU:HD12	6:A:512:GOL:H31	1.86	0.57
1:A:232:ILE:HG12	1:A:233:PHE:N	2.20	0.57
1:D:33:ASN:HB2	5:D:509:DMF:HC	1.87	0.56
1:C:57:GLU:OE1	7:C:603:HOH:O	2.18	0.56
6:A:513:GOL:H12	1:B:222:TRP:HB2	1.88	0.56
5:C:505:DMF:H12	5:C:507:DMF:HC	1.88	0.56
6:A:510:GOL:O1	6:A:510:GOL:O3	2.16	0.55
5:D:506:DMF:HC	7:D:606:HOH:O	2.07	0.54
1:C:368:ILE:HG21	1:C:387:LEU:HD22	1.89	0.54
1:D:250:GLU:HG2	7:D:841:HOH:O	2.07	0.54
1:A:265:ILE:HD12	1:A:411:ILE:HG21	1.89	0.54
1:B:13:GLN:OE1	5:B:511:DMF:H22	2.08	0.54
5:C:507:DMF:H23	7:C:732:HOH:O	2.08	0.53
1:D:54:ARG:NE	7:D:609:HOH:O	2.28	0.53
1:C:62:PHE:O	5:C:508:DMF:H22	2.08	0.53
1:B:368:ILE:HG21	1:B:387:LEU:HD22	1.91	0.52
1:A:145:ARG:NH2	7:A:615:HOH:O	2.37	0.52
1:A:35:TYR:CD1	1:A:368:ILE:HG23	2.45	0.52
1:C:409:ARG:HH21	5:C:513:DMF:H12	1.75	0.52
1:B:131:GLU:HB3	5:B:507:DMF:H22	1.92	0.51

Continued on next page...

Continued from previous page...

Atom-1	Atom-2	Interatomic distance (Å)	Clash overlap (Å)
1:B:325:LYS:NZ	5:B:512:DMF:H13	2.26	0.50
1:C:12:ARG:NH2	6:C:517:GOL:H12	2.26	0.50
1:B:301:TYR:CE2	6:B:517:GOL:H2	2.46	0.50
1:C:186:ASP:HB2	1:C:281:GLN:OE1	2.12	0.50
1:D:331:VAL:O	5:D:507:DMF:H12	2.11	0.50
5:C:508:DMF:H23	7:C:871:HOH:O	2.12	0.49
1:A:330:LYS:HA	6:A:511:GOL:H2	1.95	0.49
1:C:368:ILE:CG2	1:C:387:LEU:HD22	2.43	0.49
1:D:413:GLU:HG3	1:D:416:ARG:NH2	2.28	0.49
1:A:202:ARG:NE	7:A:620:HOH:O	2.44	0.48
1:C:368:ILE:HG21	1:C:387:LEU:CD2	2.43	0.48
1:C:195:GLU:HG3	6:C:523:GOL:H32	1.96	0.48
1:B:65:THR:HB	7:B:703:HOH:O	2.13	0.48
1:B:325:LYS:HZ3	5:B:512:DMF:H22	1.79	0.48
5:C:506:DMF:H23	1:D:42[B]:SER:HA	1.95	0.47
1:A:290:ASP:O	1:A:293:ARG:HD3	2.14	0.47
1:A:35:TYR:CZ	1:A:373:PRO:HD3	2.49	0.47
1:B:139:GLY:HA2	1:B:157:ILE:HD11	1.95	0.47
1:B:368:ILE:HG21	1:B:387:LEU:CD2	2.45	0.47
1:D:94:SER:HA	5:D:508:DMF:C1	2.44	0.47
1:B:315:SER:N	7:B:629:HOH:O	2.48	0.46
1:D:368:ILE:HG21	1:D:387:LEU:HD22	1.98	0.46
1:D:141:HIS:CD2	1:D:141:HIS:H	2.34	0.46
1:D:35:TYR:CZ	1:D:373:PRO:HD3	2.51	0.46
1:B:35:TYR:CD1	1:B:368:ILE:HG23	2.50	0.46
5:C:511:DMF:H11	7:C:760:HOH:O	2.16	0.46
1:C:358:ILE:HG23	1:C:362:LYS:HD2	1.98	0.46
1:A:7[B]:TYR:CD2	5:A:506:DMF:H23	2.50	0.45
1:C:84:LEU:CD2	1:C:89:GLU:HG2	2.46	0.45
5:C:506:DMF:H23	1:D:42[A]:SER:HA	1.97	0.45
1:C:35:TYR:CD1	1:C:368:ILE:HG23	2.51	0.45
1:B:330:LYS:HD3	5:B:507:DMF:HC	1.98	0.45
1:B:330:LYS:HA	5:B:507:DMF:HC	1.99	0.45
1:A:7[B]:TYR:CG	1:A:8:GLY:N	2.86	0.44
5:C:505:DMF:C1	5:C:507:DMF:HC	2.46	0.44
1:B:331:VAL:O	5:B:507:DMF:H12	2.17	0.44
1:B:12:ARG:HE	5:B:511:DMF:H21	1.82	0.44
1:B:186:ASP:HB2	1:B:281:GLN:OE1	2.16	0.44
1:B:368:ILE:CG2	1:B:387:LEU:HD22	2.47	0.44
1:A:94:SER:O	6:A:510:GOL:H11	2.17	0.44
1:C:179:ARG:NH2	1:C:424:LEU:HD21	2.33	0.44

Continued on next page...

Continued from previous page...

Atom-1	Atom-2	Interatomic distance (Å)	Clash overlap (Å)
1:C:362:LYS:HE3	7:C:755:HOH:O	2.18	0.43
1:C:343:PHE:HB2	1:C:344:PRO:HD3	1.99	0.43
1:B:412:LEU:HD11	1:B:435:TYR:CZ	2.53	0.43
1:B:187:LEU:HD21	1:B:294:ILE:HD12	1.99	0.43
1:C:128:ARG:NH1	7:C:641:HOH:O	2.52	0.43
1:C:12:ARG:HH21	6:C:517:GOL:C1	2.28	0.43
1:C:324:LYS:HG2	5:C:511:DMF:O	2.19	0.43
1:D:2:SER:N	1:D:131:GLU:OE2	2.51	0.43
1:B:330:LYS:CD	5:B:507:DMF:HC	2.49	0.42
1:B:416:ARG:HD3	1:B:426:TYR:CZ	2.54	0.42
1:C:200[B]:SER:OG	7:C:601:HOH:O	2.07	0.42
1:D:14:LEU:HD23	1:D:14:LEU:HA	1.92	0.42
5:B:512:DMF:HC	7:B:713:HOH:O	2.20	0.42
1:D:60:THR:HA	1:D:63:HIS:O	2.20	0.42
1:B:325:LYS:HZ3	5:B:512:DMF:H13	1.84	0.42
1:C:178:THR:HB	1:C:202:ARG:HH21	1.85	0.42
1:C:257:ASP:HB3	6:C:520:GOL:H2	2.02	0.42
1:C:94:SER:HA	5:C:506:DMF:H13	2.00	0.42
1:C:111:SER:OG	1:C:153:TYR:HB2	2.20	0.41
1:D:249:LEU:HD13	1:D:253:ILE:HD13	2.02	0.41
6:A:513:GOL:H12	1:B:222:TRP:CB	2.50	0.41
1:B:77:LEU:HD13	1:B:84:LEU:HG	2.02	0.41
1:C:139:GLY:HA2	1:C:157:ILE:HD11	2.03	0.41
1:B:315:SER:N	7:B:644:HOH:O	2.54	0.41
1:D:72:LYS:NZ	7:D:613:HOH:O	2.37	0.41
1:A:29:MET:HB3	5:A:506:DMF:H21	2.02	0.41
1:B:325:LYS:HG3	5:B:512:DMF:H22	2.03	0.41
1:C:198:TRP:HE1	5:C:516:DMF:C	2.33	0.41
1:B:7[B]:TYR:OH	1:B:12:ARG:HD2	2.20	0.41
1:C:239:ARG:NH1	7:C:645:HOH:O	2.54	0.41
1:D:142:HIS:NE2	4:D:504:T86:N27	2.68	0.41
1:C:142:HIS:NE2	4:C:504:T86:N27	2.69	0.40
1:C:77:LEU:HD13	1:C:84:LEU:HD12	2.02	0.40
1:A:141:HIS:CD2	1:A:141:HIS:H	2.39	0.40
1:B:416:ARG:HD3	1:B:426:TYR:CE2	2.57	0.40

All (2) symmetry-related close contacts are listed below. The label for Atom-2 includes the symmetry operator and encoded unit-cell translations to be applied.

Atom-1	Atom-2	Interatomic distance (Å)	Clash overlap (Å)
7:A:622:HOH:O	7:D:759:HOH:O[1_556]	2.13	0.07

Continued on next page...

Continued from previous page...

Atom-1	Atom-2	Interatomic distance (Å)	Clash overlap (Å)
7:B:812:HOH:O	7:C:992:HOH:O[1_655]	2.16	0.04

5.3 Torsion angles [i](#)

5.3.1 Protein backbone [i](#)

In the following table, the Percentiles column shows the percent Ramachandran outliers of the chain as a percentile score with respect to all X-ray entries followed by that with respect to entries of similar resolution.

The Analysed column shows the number of residues for which the backbone conformation was analysed, and the total number of residues.

Mol	Chain	Analysed	Favoured	Allowed	Outliers	Percentiles	
1	A	380/447 (85%)	376 (99%)	4 (1%)	0	100	100
1	B	401/447 (90%)	396 (99%)	5 (1%)	0	100	100
1	C	396/447 (89%)	390 (98%)	6 (2%)	0	100	100
1	D	380/447 (85%)	374 (98%)	6 (2%)	0	100	100
All	All	1557/1788 (87%)	1536 (99%)	21 (1%)	0	100	100

There are no Ramachandran outliers to report.

5.3.2 Protein sidechains [i](#)

In the following table, the Percentiles column shows the percent sidechain outliers of the chain as a percentile score with respect to all X-ray entries followed by that with respect to entries of similar resolution.

The Analysed column shows the number of residues for which the sidechain conformation was analysed, and the total number of residues.

Mol	Chain	Analysed	Rotameric	Outliers	Percentiles	
1	A	337/392 (86%)	332 (98%)	5 (2%)	67	50
1	B	358/392 (91%)	356 (99%)	2 (1%)	87	80
1	C	353/392 (90%)	349 (99%)	4 (1%)	76	61
1	D	337/392 (86%)	335 (99%)	2 (1%)	87	80
All	All	1385/1568 (88%)	1372 (99%)	13 (1%)	81	69

All (13) residues with a non-rotameric sidechain are listed below:

Mol	Chain	Res	Type
1	A	80	GLU
1	A	141	HIS
1	A	276	SER
1	A	285	ASP
1	A	393	PRO
1	B	141	HIS
1	B	233	PHE
1	C	141	HIS
1	C	200[A]	SER
1	C	200[B]	SER
1	C	285	ASP
1	D	141	HIS
1	D	285	ASP

Some sidechains can be flipped to improve hydrogen bonding and reduce clashes. There are no such sidechains identified.

5.3.3 RNA [i](#)

There are no RNA molecules in this entry.

5.4 Non-standard residues in protein, DNA, RNA chains [i](#)

There are no non-standard protein/DNA/RNA residues in this entry.

5.5 Carbohydrates [i](#)

There are no carbohydrates in this entry.

5.6 Ligand geometry [i](#)

Of 71 ligands modelled in this entry, 12 are monoatomic - leaving 59 for Mogul analysis.

In the following table, the Counts columns list the number of bonds (or angles) for which Mogul statistics could be retrieved, the number of bonds (or angles) that are observed in the model and the number of bonds (or angles) that are defined in the Chemical Component Dictionary. The Link column lists molecule types, if any, to which the group is linked. The Z score for a bond length (or angle) is the number of standard deviations the observed value is removed from the expected value. A bond length (or angle) with $|Z| > 2$ is considered an outlier worth inspection. RMSZ is the root-mean-square of all Z scores of the bond lengths (or angles).

Mol	Type	Chain	Res	Link	Bond lengths			Bond angles		
					Counts	RMSZ	# Z > 2	Counts	RMSZ	# Z > 2
4	T86	A	504	2	24,24,24	4.26	4 (16%)	33,33,33	2.22	6 (18%)
5	DMF	A	505	-	4,4,4	0.33	0	4,4,4	0.33	0
5	DMF	A	506	-	4,4,4	0.28	0	4,4,4	0.43	0
5	DMF	A	507	-	4,4,4	0.30	0	4,4,4	0.44	0
6	GOL	A	508	-	5,5,5	0.36	0	5,5,5	0.36	0
6	GOL	A	509	-	5,5,5	0.35	0	5,5,5	0.35	0
6	GOL	A	510	-	5,5,5	0.37	0	5,5,5	0.42	0
6	GOL	A	511	-	5,5,5	0.33	0	5,5,5	0.41	0
6	GOL	A	512	-	5,5,5	0.44	0	5,5,5	0.43	0
6	GOL	A	513	-	5,5,5	0.35	0	5,5,5	0.39	0
6	GOL	A	514	-	5,5,5	0.33	0	5,5,5	0.48	0
6	GOL	A	515	-	5,5,5	0.31	0	5,5,5	0.33	0
4	T86	B	504	2	24,24,24	4.42	4 (16%)	33,33,33	2.29	7 (21%)
5	DMF	B	505	-	4,4,4	0.23	0	4,4,4	0.47	0
5	DMF	B	506	-	4,4,4	0.34	0	4,4,4	0.46	0
5	DMF	B	507	-	4,4,4	0.28	0	4,4,4	0.39	0
5	DMF	B	508	-	4,4,4	0.39	0	4,4,4	0.55	0
5	DMF	B	509	6	4,4,4	0.34	0	4,4,4	0.32	0
5	DMF	B	510	-	4,4,4	0.33	0	4,4,4	0.39	0
5	DMF	B	511	-	4,4,4	0.28	0	4,4,4	0.34	0
5	DMF	B	512	-	4,4,4	0.27	0	4,4,4	0.43	0
6	GOL	B	513	-	5,5,5	0.30	0	5,5,5	0.38	0
6	GOL	B	514	-	5,5,5	0.40	0	5,5,5	0.40	0
6	GOL	B	515	-	5,5,5	0.35	0	5,5,5	0.42	0
6	GOL	B	516	-	5,5,5	0.44	0	5,5,5	0.15	0
6	GOL	B	517	-	5,5,5	0.46	0	5,5,5	0.58	0
4	T86	C	504	2	24,24,24	4.09	4 (16%)	33,33,33	2.39	7 (21%)
5	DMF	C	505	-	4,4,4	0.29	0	4,4,4	0.67	0
5	DMF	C	506	-	4,4,4	0.14	0	4,4,4	0.31	0
5	DMF	C	507	-	4,4,4	0.25	0	4,4,4	0.77	0
5	DMF	C	508	6	4,4,4	0.37	0	4,4,4	0.17	0
5	DMF	C	509	-	4,4,4	0.30	0	4,4,4	0.65	0
5	DMF	C	510	-	4,4,4	0.29	0	4,4,4	0.46	0
5	DMF	C	511	-	4,4,4	0.25	0	4,4,4	0.58	0
5	DMF	C	512	-	4,4,4	0.32	0	4,4,4	0.26	0
5	DMF	C	513	-	4,4,4	0.31	0	4,4,4	0.42	0
5	DMF	C	514	-	4,4,4	0.32	0	4,4,4	0.32	0
5	DMF	C	515	-	4,4,4	0.26	0	4,4,4	0.21	0
5	DMF	C	516	-	4,4,4	0.36	0	4,4,4	0.28	0
6	GOL	C	517	-	5,5,5	0.34	0	5,5,5	0.33	0
6	GOL	C	518	-	5,5,5	0.32	0	5,5,5	0.31	0
6	GOL	C	519	-	5,5,5	0.30	0	5,5,5	0.33	0

Mol	Type	Chain	Res	Link	Bond lengths			Bond angles		
					Counts	RMSZ	# Z > 2	Counts	RMSZ	# Z > 2
6	GOL	C	520	-	5,5,5	0.35	0	5,5,5	0.41	0
6	GOL	C	521	-	5,5,5	0.39	0	5,5,5	0.69	0
6	GOL	C	522	-	5,5,5	0.33	0	5,5,5	0.25	0
6	GOL	C	523	-	5,5,5	0.32	0	5,5,5	0.48	0
6	GOL	C	524	-	5,5,5	0.36	0	5,5,5	0.36	0
6	GOL	C	525	5	5,5,5	0.31	0	5,5,5	0.40	0
6	GOL	C	526	5	5,5,5	0.27	0	5,5,5	0.68	0
4	T86	D	504	2	24,24,24	4.41	4 (16%)	33,33,33	2.20	6 (18%)
5	DMF	D	505	-	4,4,4	0.29	0	4,4,4	0.33	0
5	DMF	D	506	-	4,4,4	0.33	0	4,4,4	0.43	0
5	DMF	D	507	-	4,4,4	0.30	0	4,4,4	0.47	0
5	DMF	D	508	-	4,4,4	0.26	0	4,4,4	0.36	0
5	DMF	D	509	-	4,4,4	0.29	0	4,4,4	0.49	0
6	GOL	D	510	-	5,5,5	0.39	0	5,5,5	0.24	0
6	GOL	D	511	-	5,5,5	0.37	0	5,5,5	0.15	0
6	GOL	D	512	-	5,5,5	0.39	0	5,5,5	0.29	0
6	GOL	D	513	-	5,5,5	0.34	0	5,5,5	0.21	0

In the following table, the Chirals column lists the number of chiral outliers, the number of chiral centers analysed, the number of these observed in the model and the number defined in the Chemical Component Dictionary. Similar counts are reported in the Torsion and Rings columns. '-' means no outliers of that kind were identified.

Mol	Type	Chain	Res	Link	Chirals	Torsions	Rings
4	T86	A	504	2	-	0/16/16/16	0/2/2/2
5	DMF	A	505	-	-	0/2/2/2	0/0/0/0
5	DMF	A	506	-	-	0/2/2/2	0/0/0/0
5	DMF	A	507	-	-	0/2/2/2	0/0/0/0
6	GOL	A	508	-	-	0/4/4/4	0/0/0/0
6	GOL	A	509	-	-	0/4/4/4	0/0/0/0
6	GOL	A	510	-	-	0/4/4/4	0/0/0/0
6	GOL	A	511	-	-	0/4/4/4	0/0/0/0
6	GOL	A	512	-	-	0/4/4/4	0/0/0/0
6	GOL	A	513	-	-	0/4/4/4	0/0/0/0
6	GOL	A	514	-	-	0/4/4/4	0/0/0/0
6	GOL	A	515	-	-	0/4/4/4	0/0/0/0
4	T86	B	504	2	-	0/16/16/16	0/2/2/2
5	DMF	B	505	-	-	0/2/2/2	0/0/0/0
5	DMF	B	506	-	-	0/2/2/2	0/0/0/0
5	DMF	B	507	-	-	0/2/2/2	0/0/0/0
5	DMF	B	508	-	-	0/2/2/2	0/0/0/0
5	DMF	B	509	6	-	0/2/2/2	0/0/0/0

Continued on next page...

Continued from previous page...

Mol	Type	Chain	Res	Link	Chirals	Torsions	Rings
5	DMF	B	510	-	-	0/2/2/2	0/0/0/0
5	DMF	B	511	-	-	0/2/2/2	0/0/0/0
5	DMF	B	512	-	-	0/2/2/2	0/0/0/0
6	GOL	B	513	-	-	0/4/4/4	0/0/0/0
6	GOL	B	514	-	-	0/4/4/4	0/0/0/0
6	GOL	B	515	-	-	0/4/4/4	0/0/0/0
6	GOL	B	516	-	-	0/4/4/4	0/0/0/0
6	GOL	B	517	-	-	0/4/4/4	0/0/0/0
4	T86	C	504	2	-	0/16/16/16	0/2/2/2
5	DMF	C	505	-	-	0/2/2/2	0/0/0/0
5	DMF	C	506	-	-	0/2/2/2	0/0/0/0
5	DMF	C	507	-	-	0/2/2/2	0/0/0/0
5	DMF	C	508	6	-	0/2/2/2	0/0/0/0
5	DMF	C	509	-	-	0/2/2/2	0/0/0/0
5	DMF	C	510	-	-	0/2/2/2	0/0/0/0
5	DMF	C	511	-	-	0/2/2/2	0/0/0/0
5	DMF	C	512	-	-	0/2/2/2	0/0/0/0
5	DMF	C	513	-	-	0/2/2/2	0/0/0/0
5	DMF	C	514	-	-	0/2/2/2	0/0/0/0
5	DMF	C	515	-	-	0/2/2/2	0/0/0/0
5	DMF	C	516	-	-	0/2/2/2	0/0/0/0
6	GOL	C	517	-	-	0/4/4/4	0/0/0/0
6	GOL	C	518	-	-	0/4/4/4	0/0/0/0
6	GOL	C	519	-	-	0/4/4/4	0/0/0/0
6	GOL	C	520	-	-	0/4/4/4	0/0/0/0
6	GOL	C	521	-	-	0/4/4/4	0/0/0/0
6	GOL	C	522	-	-	0/4/4/4	0/0/0/0
6	GOL	C	523	-	-	0/4/4/4	0/0/0/0
6	GOL	C	524	-	-	0/4/4/4	0/0/0/0
6	GOL	C	525	5	-	0/4/4/4	0/0/0/0
6	GOL	C	526	5	-	0/4/4/4	0/0/0/0
4	T86	D	504	2	-	0/16/16/16	0/2/2/2
5	DMF	D	505	-	-	0/2/2/2	0/0/0/0
5	DMF	D	506	-	-	0/2/2/2	0/0/0/0
5	DMF	D	507	-	-	0/2/2/2	0/0/0/0
5	DMF	D	508	-	-	0/2/2/2	0/0/0/0
5	DMF	D	509	-	-	0/2/2/2	0/0/0/0
6	GOL	D	510	-	-	0/4/4/4	0/0/0/0
6	GOL	D	511	-	-	0/4/4/4	0/0/0/0
6	GOL	D	512	-	-	0/4/4/4	0/0/0/0
6	GOL	D	513	-	-	0/4/4/4	0/0/0/0

All (16) bond length outliers are listed below:

Mol	Chain	Res	Type	Atoms	Z	Observed(Å)	Ideal(Å)
4	B	504	T86	O28-N27	-11.04	1.20	1.39
4	C	504	T86	O28-N27	-10.95	1.20	1.39
4	D	504	T86	O28-N27	-10.55	1.21	1.39
4	A	504	T86	O28-N27	-10.08	1.22	1.39
4	C	504	T86	O24-C25	-4.17	1.30	1.42
4	A	504	T86	O24-C25	-4.17	1.30	1.42
4	B	504	T86	O24-C25	-4.10	1.30	1.42
4	D	504	T86	O24-C25	-4.01	1.30	1.42
4	C	504	T86	O23-C12	3.22	1.29	1.23
4	D	504	T86	O23-C12	3.92	1.31	1.23
4	A	504	T86	O23-C12	4.07	1.31	1.23
4	B	504	T86	O23-C12	4.47	1.32	1.23
4	C	504	T86	C26-N27	15.44	1.52	1.32
4	A	504	T86	C26-N27	16.94	1.54	1.32
4	B	504	T86	C26-N27	17.24	1.55	1.32
4	D	504	T86	C26-N27	17.56	1.55	1.32

All (26) bond angle outliers are listed below:

Mol	Chain	Res	Type	Atoms	Z	Observed(°)	Ideal(°)
4	C	504	T86	O23-C12-C1	-6.06	109.69	120.98
4	B	504	T86	O23-C12-C1	-4.71	112.21	120.98
4	A	504	T86	O23-C12-C1	-4.52	112.56	120.98
4	D	504	T86	O23-C12-C1	-3.59	114.29	120.98
4	A	504	T86	O29-C26-N27	-3.51	116.12	122.96
4	C	504	T86	O29-C26-N27	-3.42	116.30	122.96
4	B	504	T86	O29-C26-N27	-3.08	116.96	122.96
4	A	504	T86	C17-N13-C12	-2.92	118.92	127.00
4	C	504	T86	C17-N13-C12	-2.85	119.11	127.00
4	B	504	T86	C17-N13-C12	-2.58	119.84	127.00
4	B	504	T86	C16-C15-C26	-2.33	112.64	120.44
4	D	504	T86	C16-C15-C26	-2.25	112.89	120.44
4	D	504	T86	O29-C26-N27	-2.19	118.68	122.96
4	C	504	T86	C16-C15-C26	-2.12	113.35	120.44
4	C	504	T86	C15-C26-N27	2.04	119.70	116.31
4	A	504	T86	C15-C26-N27	2.19	119.95	116.31
4	B	504	T86	C18-C17-N13	2.40	121.03	116.69
4	D	504	T86	C18-C17-N13	2.52	121.24	116.69
4	C	504	T86	C2-C1-C12	2.60	126.98	122.69
4	A	504	T86	C2-C1-C12	2.73	127.19	122.69
4	B	504	T86	C2-C1-C12	3.23	128.02	122.69
4	D	504	T86	C2-C1-C12	3.52	128.49	122.69
4	A	504	T86	C25-O24-C18	9.32	131.35	117.53

Continued on next page...

Continued from previous page...

Mol	Chain	Res	Type	Atoms	Z	Observed(°)	Ideal(°)
4	B	504	T86	C25-O24-C18	9.60	131.78	117.53
4	D	504	T86	C25-O24-C18	9.67	131.88	117.53
4	C	504	T86	C25-O24-C18	9.91	132.24	117.53

There are no chirality outliers.

There are no torsion outliers.

There are no ring outliers.

32 monomers are involved in 59 short contacts:

Mol	Chain	Res	Type	Clashes	Symm-Clashes
5	A	506	DMF	2	0
6	A	510	GOL	3	0
6	A	511	GOL	1	0
6	A	512	GOL	1	0
6	A	513	GOL	2	0
5	B	507	DMF	5	0
5	B	511	DMF	2	0
5	B	512	DMF	5	0
6	B	513	GOL	1	0
6	B	514	GOL	1	0
6	B	517	GOL	1	0
4	C	504	T86	1	0
5	C	505	DMF	3	0
5	C	506	DMF	6	0
5	C	507	DMF	4	0
5	C	508	DMF	3	0
5	C	511	DMF	2	0
5	C	513	DMF	1	0
5	C	515	DMF	1	0
5	C	516	DMF	2	0
6	C	517	GOL	3	0
6	C	518	GOL	1	0
6	C	520	GOL	1	0
6	C	521	GOL	1	0
6	C	522	GOL	1	0
6	C	523	GOL	1	0
4	D	504	T86	1	0
5	D	506	DMF	1	0
5	D	507	DMF	1	0
5	D	508	DMF	1	0
5	D	509	DMF	1	0

Continued on next page...

Continued from previous page...

Mol	Chain	Res	Type	Clashes	Symm-Clashes
6	D	510	GOL	1	0

5.7 Other polymers [i](#)

There are no such residues in this entry.

5.8 Polymer linkage issues [i](#)

There are no chain breaks in this entry.

6 Fit of model and data [i](#)

6.1 Protein, DNA and RNA chains [i](#)

In the following table, the column labelled ‘#RSRZ > 2’ contains the number (and percentage) of RSRZ outliers, followed by percent RSRZ outliers for the chain as percentile scores relative to all X-ray entries and entries of similar resolution. The OWAB column contains the minimum, median, 95th percentile and maximum values of the occupancy-weighted average B-factor per residue. The column labelled ‘Q < 0.9’ lists the number of (and percentage) of residues with an average occupancy less than 0.9.

Mol	Chain	Analysed	<RSRZ>	#RSRZ>2	OWAB(Å ²)	Q<0.9
1	A	387/447 (86%)	0.73	32 (8%) 11 14	7, 16, 40, 68	0
1	B	411/447 (91%)	0.73	30 (7%) 15 19	7, 15, 36, 77	0
1	C	406/447 (90%)	0.66	22 (5%) 26 31	6, 13, 33, 58	0
1	D	386/447 (86%)	0.71	28 (7%) 15 19	7, 16, 37, 75	0
All	All	1590/1788 (88%)	0.71	112 (7%) 16 21	6, 15, 36, 77	0

All (112) RSRZ outliers are listed below:

Mol	Chain	Res	Type	RSRZ
1	A	425	ILE	9.9
1	B	224	MET	7.5
1	D	392	PHE	7.4
1	B	168	THR	6.7
1	B	425	ILE	6.5
1	B	83	GLU	5.7
1	C	84	LEU	5.0
1	D	81	GLU	5.0
1	A	392	PHE	5.0
1	B	177	GLN	4.6
1	D	231	PRO	4.6
1	C	425	ILE	4.4
1	A	404	ILE	4.4
1	A	232	ILE	4.2
1	B	437	LEU	4.2
1	B	315	SER	4.0
1	A	81	GLU	3.9
1	A	402	ASP	3.8
1	D	412	LEU	3.7
1	C	80	GLU	3.7
1	A	231	PRO	3.6

Continued on next page...

Continued from previous page...

Mol	Chain	Res	Type	RSRZ
1	D	165	VAL	3.6
1	B	426	TYR	3.6
1	A	424	LEU	3.6
1	A	165	VAL	3.5
1	A	409	ARG	3.5
1	A	83	GLU	3.5
1	D	409	ARG	3.5
1	D	383	PRO	3.4
1	B	80	GLU	3.4
1	A	412	LEU	3.3
1	C	232	ILE	3.3
1	D	385	PHE	3.3
1	B	99	TYR	3.3
1	A	403	SER	3.3
1	D	402	ASP	3.3
1	C	426	TYR	3.3
1	C	437	LEU	3.2
1	D	232	ILE	3.2
1	C	128	ARG	3.2
1	C	85	THR	3.1
1	D	83	GLU	3.1
1	C	167	SER	3.1
1	D	82	LYS	3.1
1	C	99	TYR	3.0
1	B	85	THR	3.0
1	A	127[A]	CYS	3.0
1	C	438	THR	2.9
1	B	231	PRO	2.9
1	D	127[A]	CYS	2.9
1	B	7[A]	TYR	2.9
1	A	222	TRP	2.9
1	A	406	LYS	2.9
1	A	420	ASP	2.8
1	A	393	PRO	2.8
1	B	438	THR	2.8
1	B	128	ARG	2.8
1	C	424	LEU	2.7
1	D	424	LEU	2.7
1	A	302	PRO	2.7
1	B	439	GLY	2.7
1	D	420	ASP	2.7
1	B	446	ARG	2.7

Continued on next page...

Continued from previous page...

Mol	Chain	Res	Type	RSRZ
1	A	405	GLN	2.7
1	D	416	ARG	2.7
1	A	303	ASN	2.7
1	B	84	LEU	2.7
1	A	7[A]	TYR	2.6
1	B	127	CYS	2.6
1	B	302	PRO	2.5
1	C	79	CYS	2.5
1	A	384	ASP	2.5
1	B	232	ILE	2.5
1	C	436	ASN	2.5
1	A	167	SER	2.5
1	C	445	PRO	2.4
1	C	177	GLN	2.4
1	D	128	ARG	2.4
1	D	384	ASP	2.4
1	C	446	ARG	2.4
1	D	222	TRP	2.4
1	A	416	ARG	2.3
1	D	404	ILE	2.3
1	A	76	MET	2.3
1	B	167	SER	2.3
1	B	445	PRO	2.2
1	B	428	TYR	2.2
1	A	264	PRO	2.2
1	A	383	PRO	2.2
1	B	394	HIS	2.2
1	D	271	ILE	2.2
1	D	382	GLY	2.2
1	C	302	PRO	2.1
1	A	256	LEU	2.1
1	B	100	ASP	2.1
1	C	222	TRP	2.1
1	D	99	TYR	2.1
1	A	413	GLU	2.1
1	C	443	LEU	2.1
1	A	82	LYS	2.1
1	D	368	ILE	2.1
1	A	301	TYR	2.1
1	D	302	PRO	2.1
1	D	167	SER	2.1
1	C	231	PRO	2.1

Continued on next page...

Continued from previous page...

Mol	Chain	Res	Type	RSRZ
1	B	436	ASN	2.1
1	B	76	MET	2.0
1	B	77	LEU	2.0
1	D	315	SER	2.0
1	B	432	TYR	2.0
1	D	301	TYR	2.0
1	C	68	VAL	2.0

6.2 Non-standard residues in protein, DNA, RNA chains [i](#)

There are no non-standard protein/DNA/RNA residues in this entry.

6.3 Carbohydrates [i](#)

There are no carbohydrates in this entry.

6.4 Ligands [i](#)

In the following table, the Atoms column lists the number of modelled atoms in the group and the number defined in the chemical component dictionary. The B-factors column lists the minimum, median, 95th percentile and maximum values of B factors of atoms in the group. The column labelled 'Q< 0.9' lists the number of atoms with occupancy less than 0.9.

Mol	Type	Chain	Res	Atoms	RSCC	RSR	B-factors(Å ²)	Q<0.9
5	DMF	C	512	5/5	0.35	0.33	37,44,55,63	0
6	GOL	C	526	6/6	0.47	0.40	50,56,57,60	0
6	GOL	C	517	6/6	0.49	0.31	44,49,51,61	0
6	GOL	D	512	6/6	0.53	0.56	48,53,57,61	0
5	DMF	B	509	5/5	0.56	0.35	51,60,62,65	0
6	GOL	D	513	6/6	0.56	0.28	63,65,65,65	0
5	DMF	A	505	5/5	0.56	0.25	56,60,61,62	0
5	DMF	B	510	5/5	0.59	0.36	48,49,59,60	0
6	GOL	C	524	6/6	0.61	0.34	47,54,55,59	0
5	DMF	D	507	5/5	0.61	0.26	29,35,43,45	0
6	GOL	A	514	6/6	0.63	0.27	37,50,59,62	0
6	GOL	A	513	6/6	0.63	0.28	56,60,66,68	0
6	GOL	C	523	6/6	0.65	0.24	44,48,54,62	0
6	GOL	C	525	6/6	0.67	0.32	39,48,54,66	0
6	GOL	A	515	6/6	0.68	0.27	43,45,46,47	0
5	DMF	A	506	5/5	0.69	0.32	40,46,51,52	0

Continued on next page...

Continued from previous page...

Mol	Type	Chain	Res	Atoms	RSCC	RSR	B-factors(\AA^2)	Q<0.9
5	DMF	C	511	5/5	0.71	0.28	40,50,57,57	0
6	GOL	A	509	6/6	0.72	0.19	48,51,56,56	0
5	DMF	B	512	5/5	0.72	0.32	34,45,52,58	0
5	DMF	C	508	5/5	0.73	0.21	10,35,43,53	0
6	GOL	C	521	6/6	0.74	0.25	29,38,39,50	0
6	GOL	B	516	6/6	0.74	0.25	44,49,49,57	0
5	DMF	D	505	5/5	0.74	0.21	43,44,46,46	0
5	DMF	B	508	5/5	0.76	0.19	30,41,43,44	0
5	DMF	C	513	5/5	0.76	0.21	44,48,51,52	0
5	DMF	B	505	5/5	0.77	0.21	22,34,40,44	0
6	GOL	C	522	6/6	0.77	0.21	38,45,54,57	0
5	DMF	D	508	5/5	0.78	0.22	27,31,35,43	0
5	DMF	B	507	5/5	0.78	0.26	23,36,36,41	0
5	DMF	C	505	5/5	0.78	0.25	33,37,38,51	0
5	DMF	C	515	5/5	0.79	0.20	33,35,36,36	0
5	DMF	C	510	5/5	0.80	0.20	64,65,67,70	0
6	GOL	C	518	6/6	0.80	0.28	26,32,37,41	0
6	GOL	A	512	6/6	0.80	0.15	25,31,32,36	0
6	GOL	B	515	6/6	0.80	0.19	21,31,34,47	0
5	DMF	C	516	5/5	0.80	0.25	32,37,40,51	0
5	DMF	C	506	5/5	0.80	0.16	16,30,39,50	0
5	DMF	C	514	5/5	0.81	0.24	29,36,41,51	0
6	GOL	A	511	6/6	0.81	0.18	32,38,43,45	0
5	DMF	D	509	5/5	0.81	0.20	36,39,47,50	0
5	DMF	C	507	5/5	0.81	0.24	22,25,40,54	0
6	GOL	C	520	6/6	0.81	0.19	36,42,47,49	0
5	DMF	B	511	5/5	0.82	0.20	47,49,54,55	0
4	T86	D	504	23/23	0.83	0.16	17,27,38,45	0
6	GOL	B	513	6/6	0.83	0.18	17,20,29,36	0
5	DMF	A	507	5/5	0.84	0.18	31,33,37,46	0
6	GOL	D	510	6/6	0.84	0.17	28,35,37,43	0
5	DMF	C	509	5/5	0.85	0.14	25,26,32,32	0
4	T86	A	504	23/23	0.86	0.14	19,27,39,41	0
6	GOL	A	510	6/6	0.86	0.13	26,32,40,46	0
5	DMF	D	506	5/5	0.86	0.18	24,26,39,44	0
5	DMF	B	506	5/5	0.87	0.14	29,38,42,47	0
4	T86	B	504	23/23	0.87	0.16	15,23,37,39	0
6	GOL	D	511	6/6	0.87	0.15	19,20,24,25	0
6	GOL	B	517	6/6	0.88	0.16	31,35,35,47	0
4	T86	C	504	23/23	0.88	0.16	15,24,32,35	0
6	GOL	B	514	6/6	0.88	0.16	24,27,30,31	0
6	GOL	C	519	6/6	0.89	0.12	14,18,23,27	0

Continued on next page...

Continued from previous page...

Mol	Type	Chain	Res	Atoms	RSCC	RSR	B-factors(\AA^2)	Q<0.9
6	GOL	A	508	6/6	0.90	0.15	15,20,25,26	0
2	ZN	A	501	1/1	0.99	0.05	23,23,23,23	0
2	ZN	C	501	1/1	0.99	0.04	23,23,23,23	0
3	K	D	502	1/1	0.99	0.11	11,11,11,11	0
3	K	D	503	1/1	0.99	0.08	11,11,11,11	0
2	ZN	D	501	1/1	0.99	0.06	22,22,22,22	0
3	K	C	503	1/1	0.99	0.10	12,12,12,12	0
3	K	C	502	1/1	1.00	0.12	10,10,10,10	0
3	K	A	503	1/1	1.00	0.09	13,13,13,13	0
2	ZN	B	501	1/1	1.00	0.06	22,22,22,22	0
3	K	B	503	1/1	1.00	0.10	14,14,14,14	0
3	K	A	502	1/1	1.00	0.09	10,10,10,10	0
3	K	B	502	1/1	1.00	0.11	10,10,10,10	0

6.5 Other polymers [i](#)

There are no such residues in this entry.